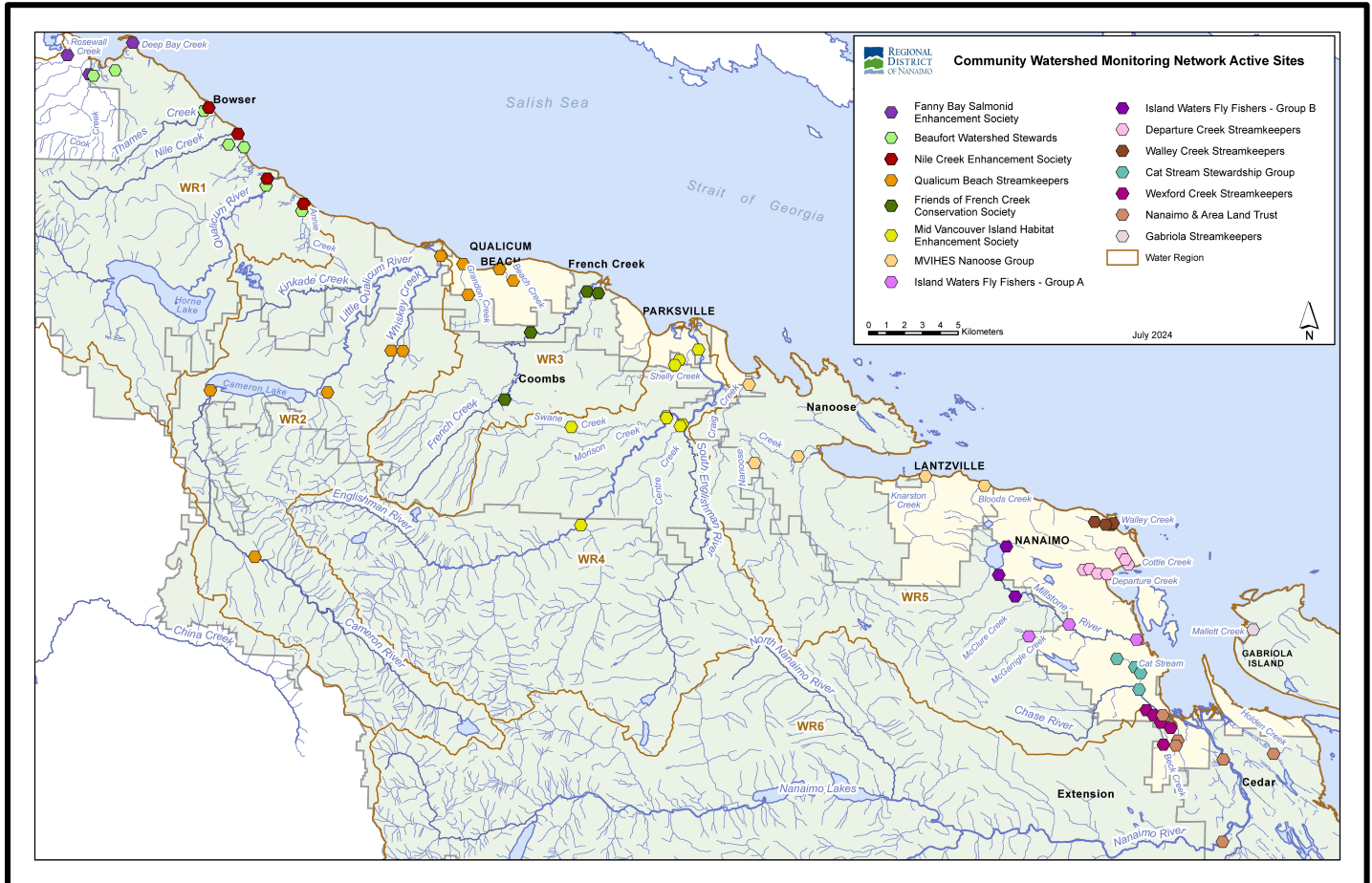


# Community Watershed Monitoring Network 2024 Results by Water Region



Included in Water Region (WR) 7 package:

1. CWMN WR7 sample sites
2. How to interpret a box plot
3. Box Plot Comparison – 2024 data to previous years: *displayed by parameter (Turbidity, Dissolved Oxygen, Temperature, Conductivity) & sample period (summer, fall)*
4. Gabriola Streamkeepers (GSK) map



Water Region 7  
sampled by:

**Gabriola Streamkeepers (GSK)**



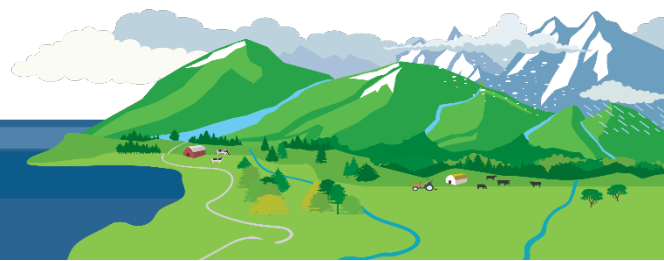
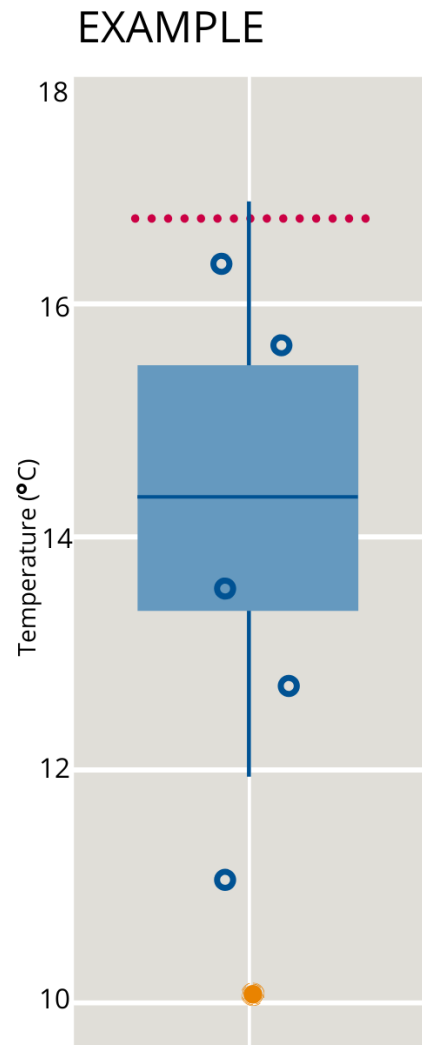
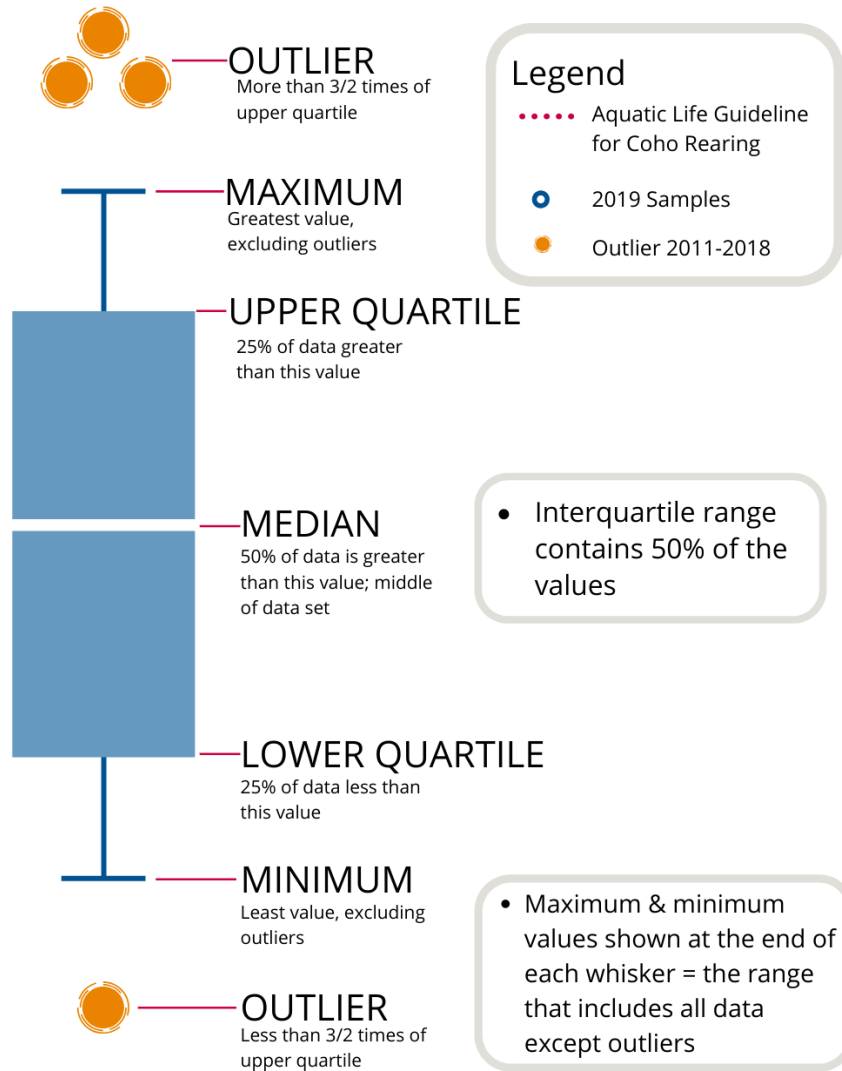
## **WR7 CWMN Sample Sites:**

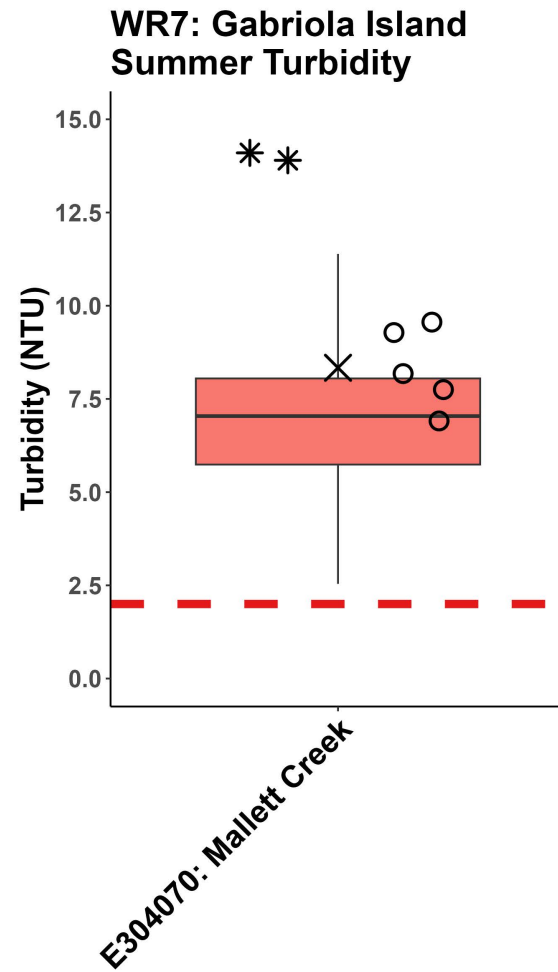
The table below shows the sites monitored by each of the streamkeeper organizations, as well as the number of years and which years a site was sampled. The number of years is important to keep in mind when interpreting the box plots as the plot for each site may contain a slightly different temporal range.

Group	EMS ID	Geographic Description	Years Sampled	Years Monitored
GSk	E304070	Mallett Creek 40m upstream from Taylor Bay Rd	9	2015 - present

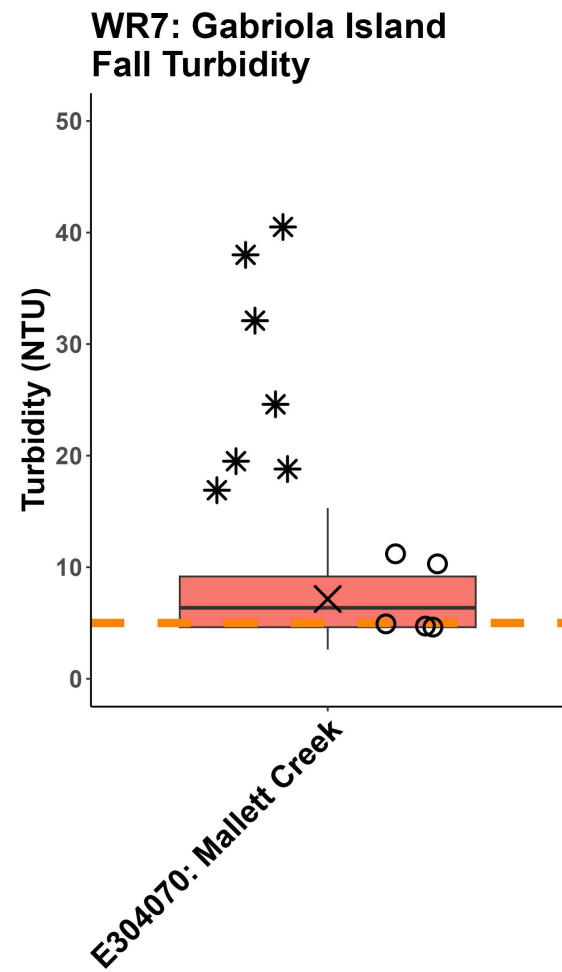


# How to Interpret a Box Plot:

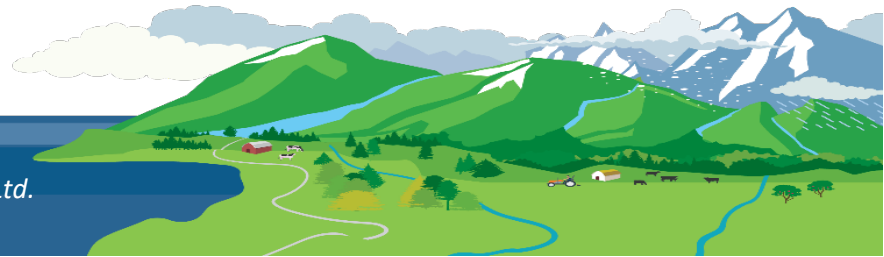




- \* Outlier 2015-2023
- 2024 Samples
- × 2024 30-Day Mean
- Jan-Sept Max (2 NTU)

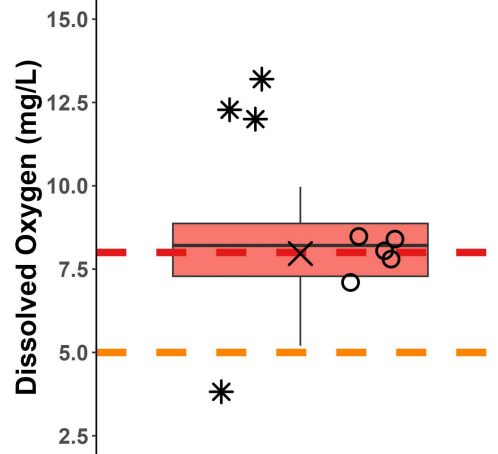


- \* Outlier 2015-2023
- 2024 Samples
- × 2024 30-Day Mean
- Oct-Dec Max (5 NTU)





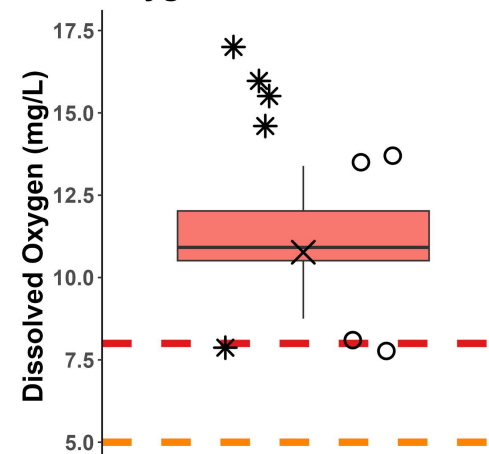
### WR7: Gabriola Island Summer Dissolved Oxygen



E304070: Mallett Creek

- \* Outlier 2015-2023
- 2024 Samples
- × 2024 30-Day Mean
- 30 Day Average (<8 mg/L)
- Instantaneous Minimum (<5 mg/L)

### WR7: Gabriola Island Fall Dissolved Oxygen

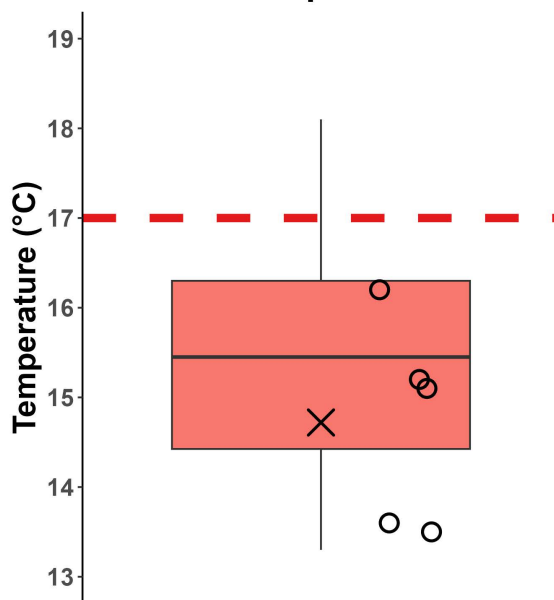


E304070: Mallett Creek

- \* Outlier 2015-2023
- 2024 Samples
- × 2024 30-Day Mean
- 30 Day Average (<8 mg/L)
- Instantaneous Minimum (<5 mg/L)



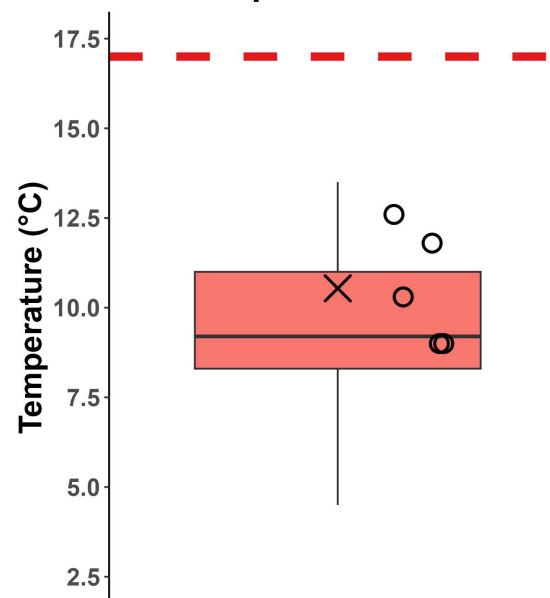
**WR7: Gabriola Island  
Summer Temperature**



**E304070: Mallett Creek**

- \* Outlier 2015-2023
- 2024 Samples
- × 2024 30-Day Mean
- Aquatic Life Guideline for Coho Rearing (17°C)

**WR7: Gabriola Island  
Fall Temperature**

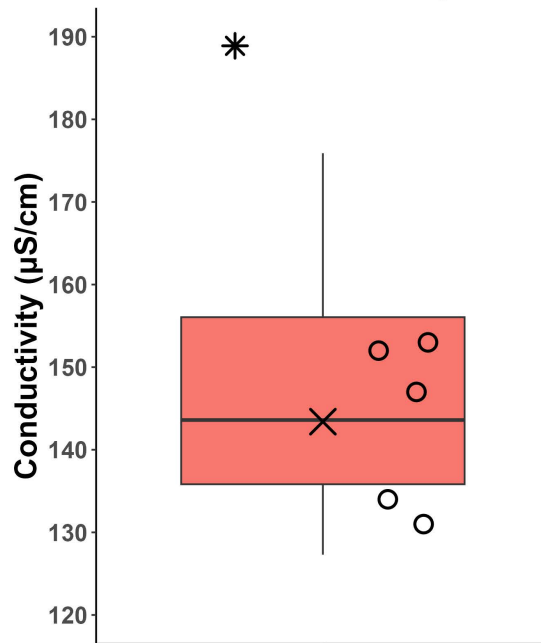


**E304070: Mallett Creek**

- \* Outlier 2015-2023
- 2024 Samples
- × 2024 30-Day Mean
- Aquatic Life Guideline for Coho Rearing (17°C)



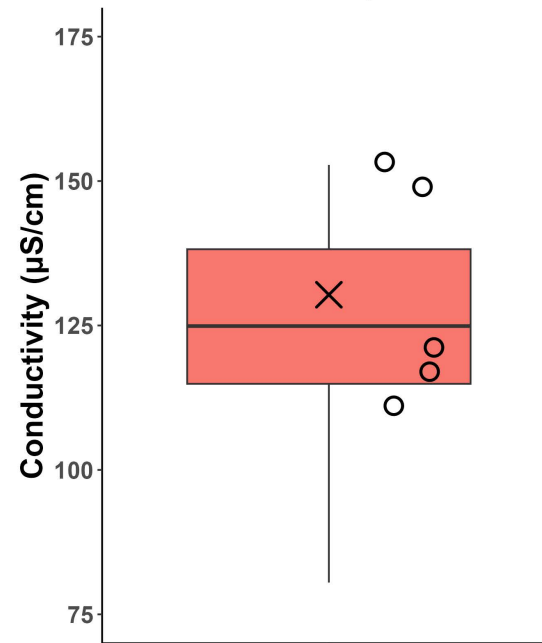
**WR7: Gabriola Island  
Summer Conductivity**



E304070: Mallett Creek

- \* Outlier 2015-2023
- 2024 Samples
- × 2024 30-Day Mean

**WR7: Gabriola Island  
Fall Conductivity**



E304070: Mallett Creek

- \* Outlier 2015-2023
- 2024 Samples
- × 2024 30-Day Mean





