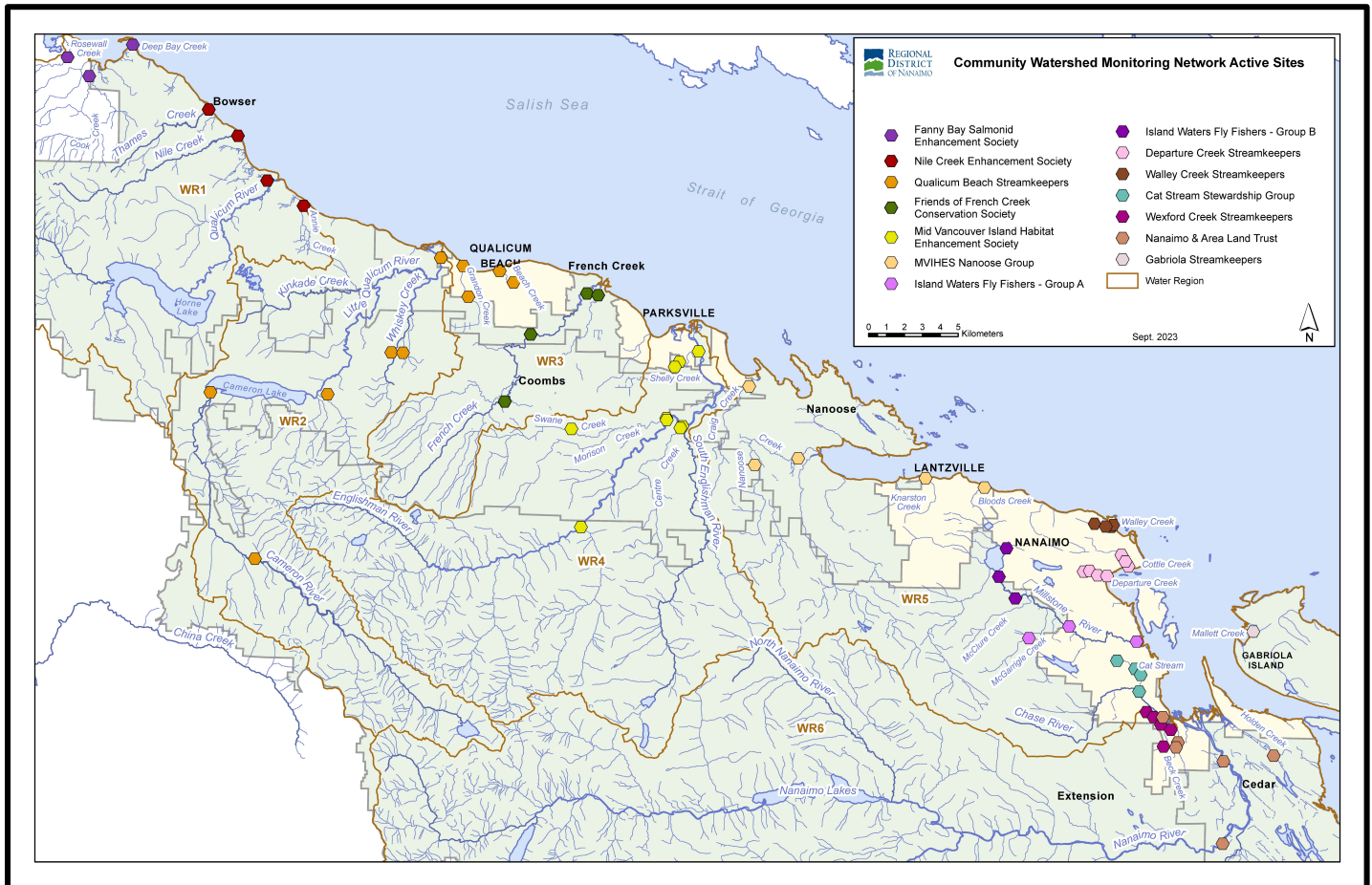


Community Watershed Monitoring Network 2023 Results by Water Region



Included in Water Region (WR) 7 package:

1. CWMN WR7 sample sites
2. How to interpret a box plot
3. Box Plot Comparison – 2023 data to previous years: *displayed by parameter (Turbidity, Dissolved Oxygen, Temperature, Conductivity) & sample period (summer, fall)*
4. Gabriola Streamkeepers (GSK) map



Water Region 7
sampled by:
Gabriola Streamkeepers (GSK)



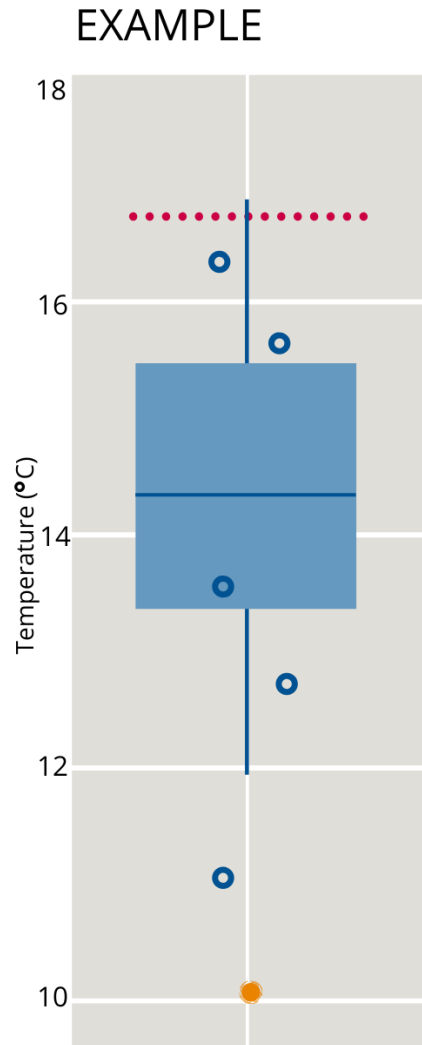
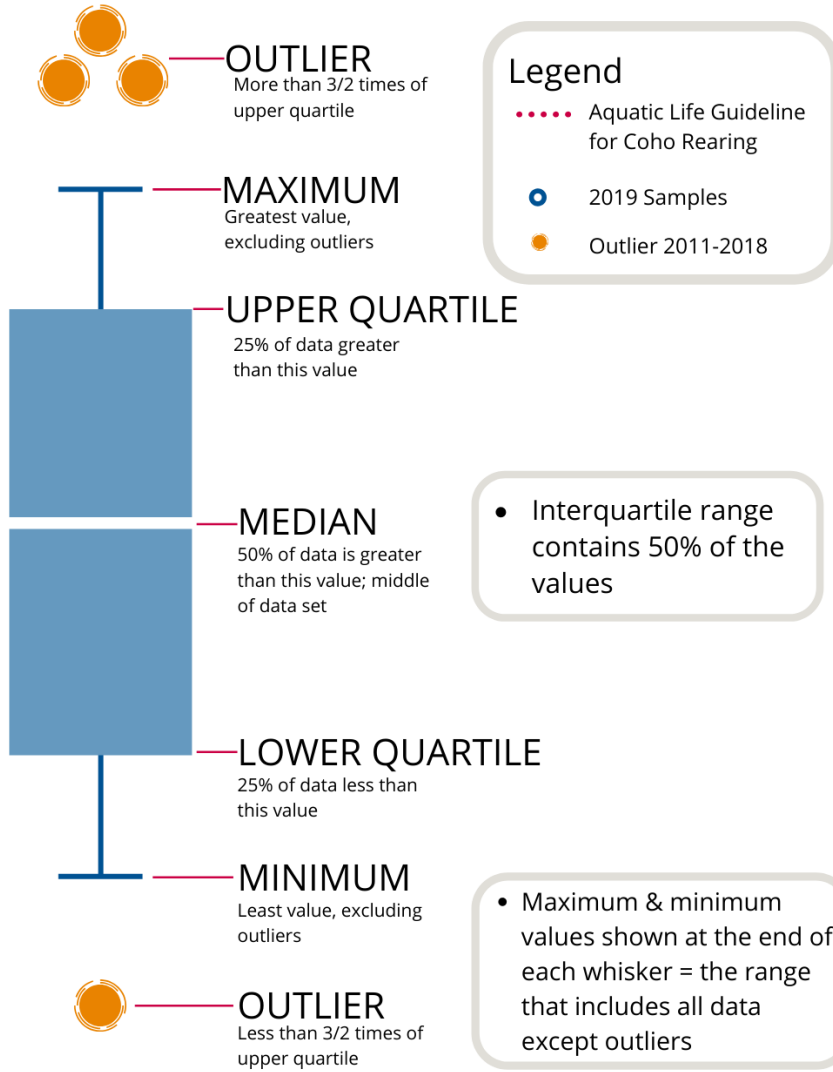
WR7 CWMN Sample Sites:

The table below shows the sites monitored by each of the streamkeeper organizations, as well as the number of years and which years a site was sampled. The number of years is important to keep in mind when interpreting the box plots as the plot for each site may contain a slightly different temporal range.

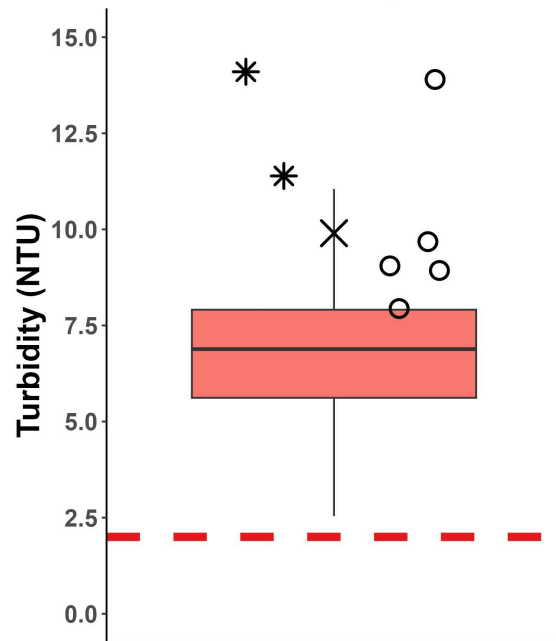
Group	EMS ID	Geographic Description	Years Sampled	Years Monitored
GSk	E304070	Mallett Creek 40m upstream from Taylor Bay Rd	9	2015 - present



How to Interpret a Box Plot:



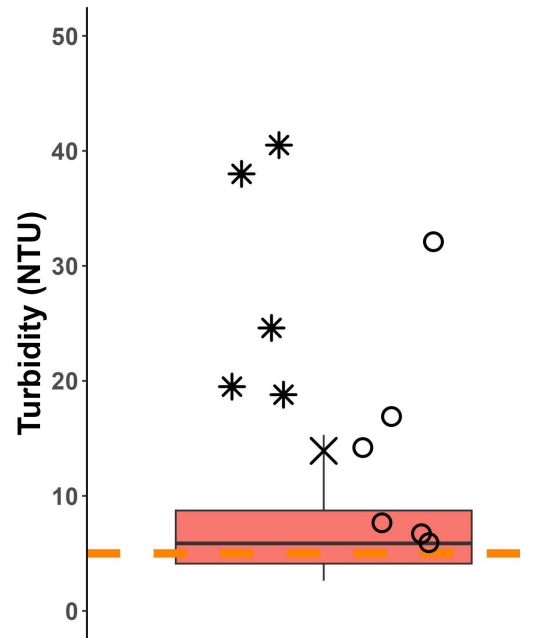
WR7: Gabriola Island Summer Turbidity



E304070: Mallett Creek

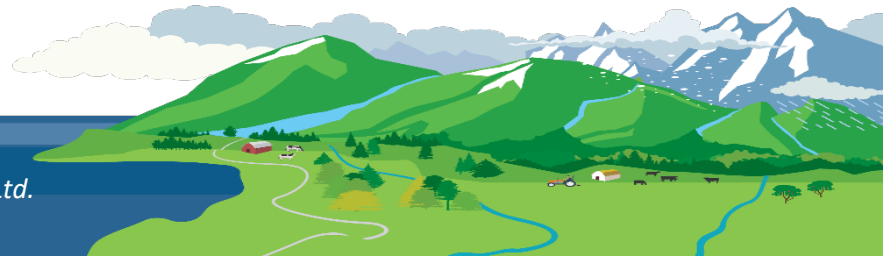
- * Outlier 2015-2022
- 2023 Samples
- X 2023 30-Day Mean
- Jan-Sept Max (2 NTU)

WR7: Gabriola Island Fall Turbidity

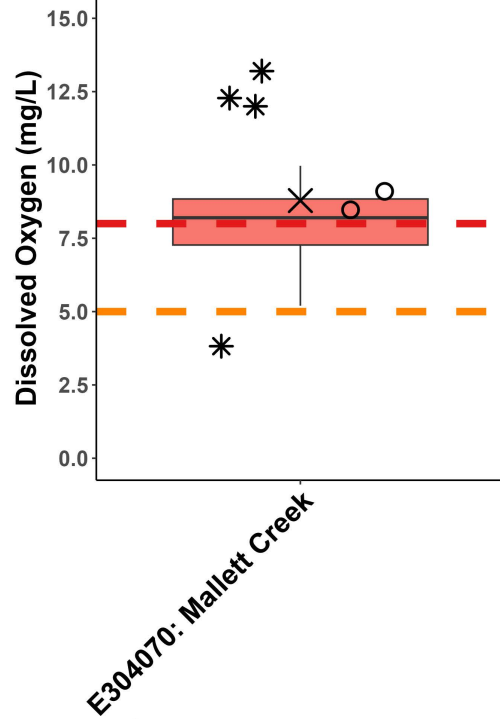


E304070: Mallett Creek

- * Outlier 2015-2022
- 2023 Samples
- X 2023 30-Day Mean
- Oct-Dec Max (5 NTU)



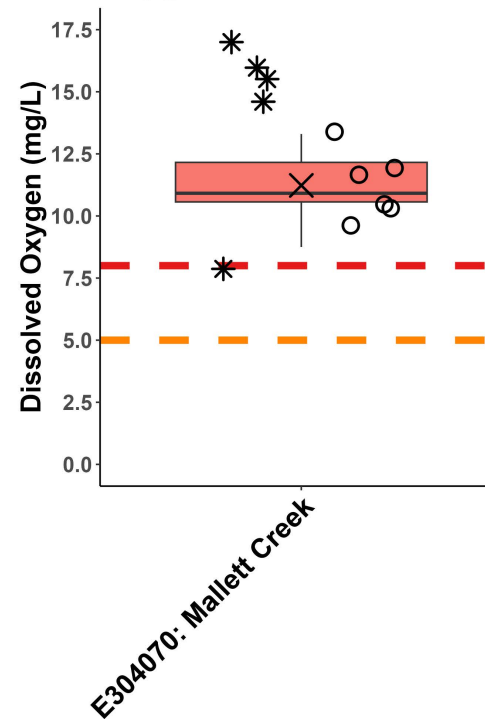
WR7: Gabriola Island Summer Dissolved Oxygen



E304070: Mallett Creek

- * Outlier 2015-2022
- 2023 Samples
- × 2023 30-Day Mean
- 30 Day Average (<8 mg/L)
- Instantaneous Minimum (<5 mg/L)

WR7: Gabriola Island Fall Dissolved Oxygen

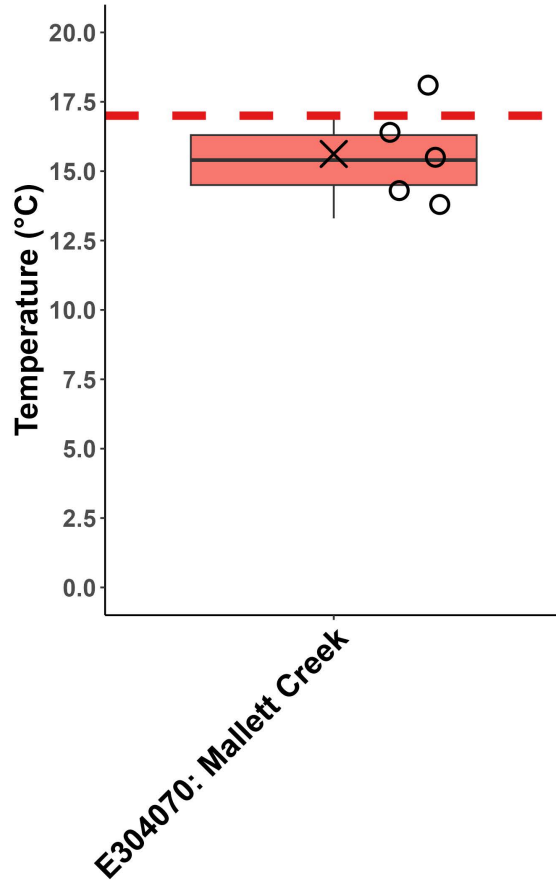


E304070: Mallett Creek

- * Outlier 2015-2022
- 2023 Samples
- × 2023 30-Day Mean
- 30 Day Average (<8 mg/L)
- Instantaneous Minimum (<5 mg/L)

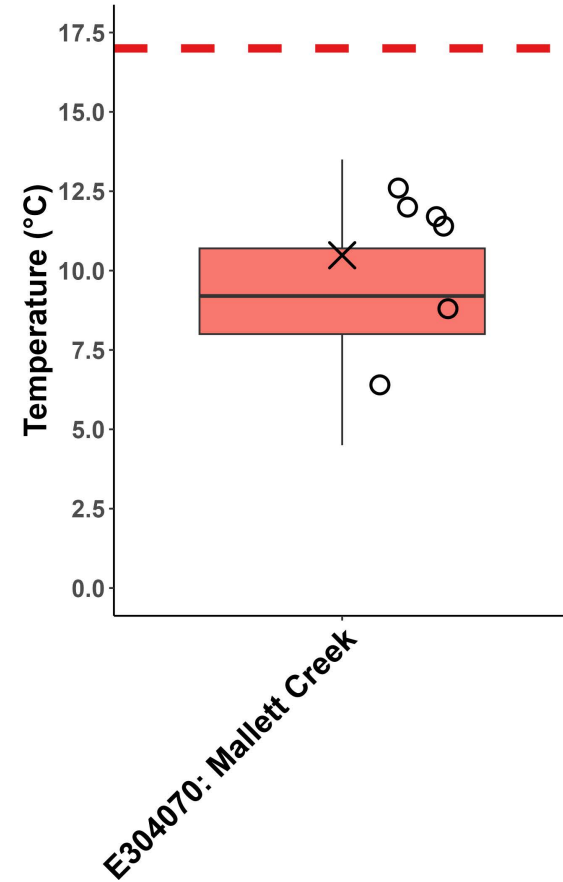


WR7: Gabriola Island Summer Temperature



- * Outlier 2015-2022
- 2023 Samples
- × 2023 30-Day Mean
- Aquatic Life Guideline for Coho Rearing (17°C)

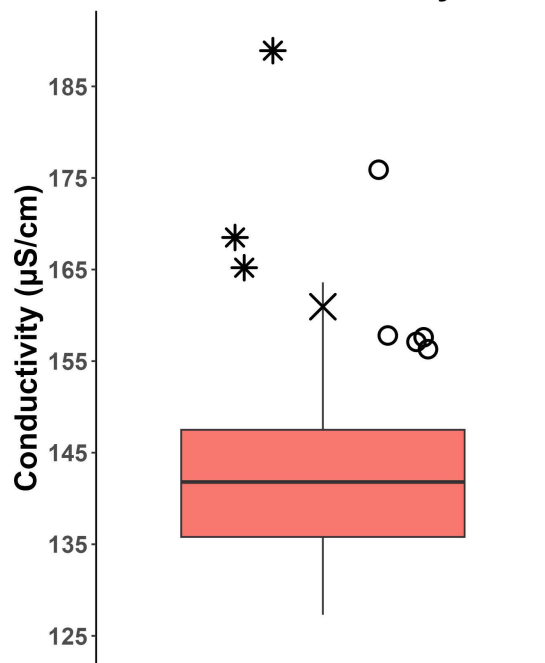
WR7: Gabriola Island Fall Temperature



- * Outlier 2015-2022
- 2023 Samples
- × 2023 30-Day Mean
- Aquatic Life Guideline for Coho Rearing (17°C)



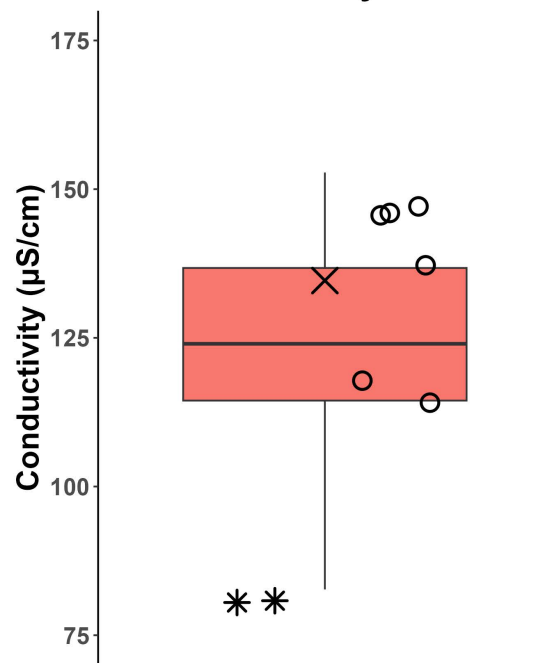
**WR7: Gabriola Island
Summer Conductivity**



E304070: Mallett Creek

- * Outlier 2015-2022
- 2023 Samples
- × 2023 30-Day Mean

**WR7: Gabriola Island
Fall Conductivity**



E304070: Mallett Creek

- * Outlier 2015-2022
- 2023 Samples
- × 2023 30-Day Mean





**Gabriola Streamkeepers
2023 Monitoring Sites**

REGIONAL DISTRICT OF NANAIMO

Status	Community Park
Active	Regional Park
Not Active	Provincial Park
Watercourse (approximate location)	2022 Air Photo

0 125 250 500 Meters

July 2023

N