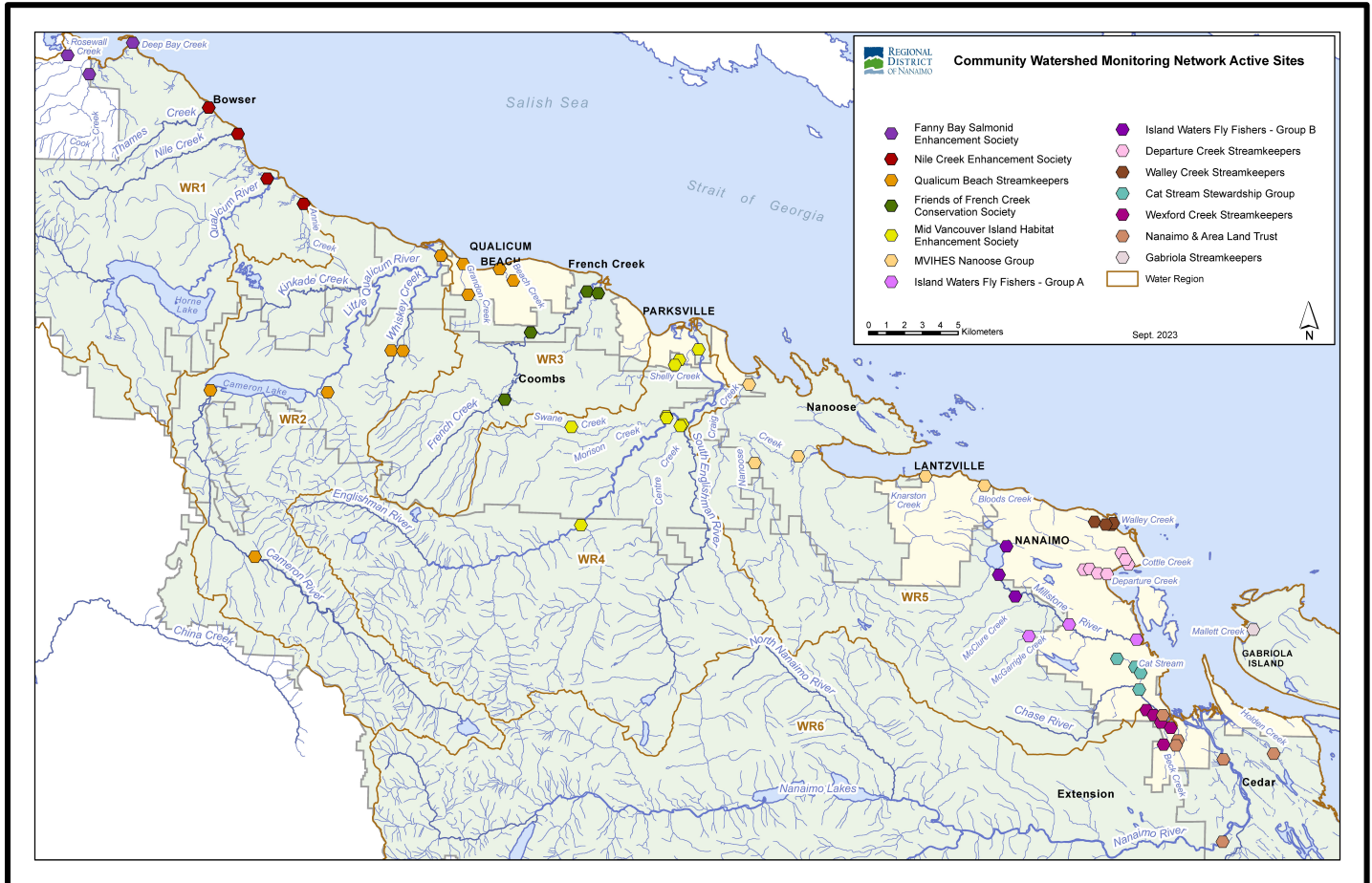
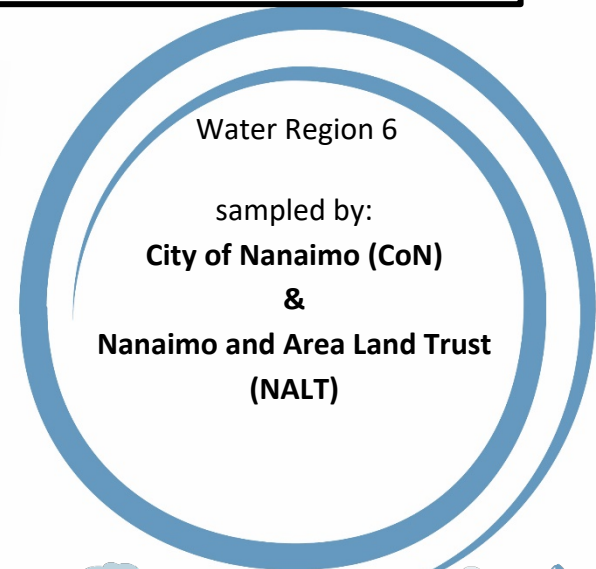


# Community Watershed Monitoring Network 2024 Results by Water Region



Included in Water Region (WR) 6 package:

1. CWMN WR6 sample sites
2. How to interpret a box plot
3. Box Plot Comparison – 2024 data to previous years: *displayed by parameter (Turbidity, Dissolved Oxygen, Temperature, Conductivity) & sample period (summer, fall)*
4. Wexford Creek Streamkeepers (WxCS) map
5. Nanaimo and Area Land Trust (NALT) map

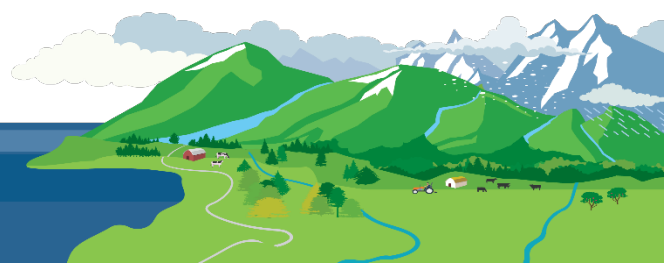


## WR6 CWMN Sample Sites:

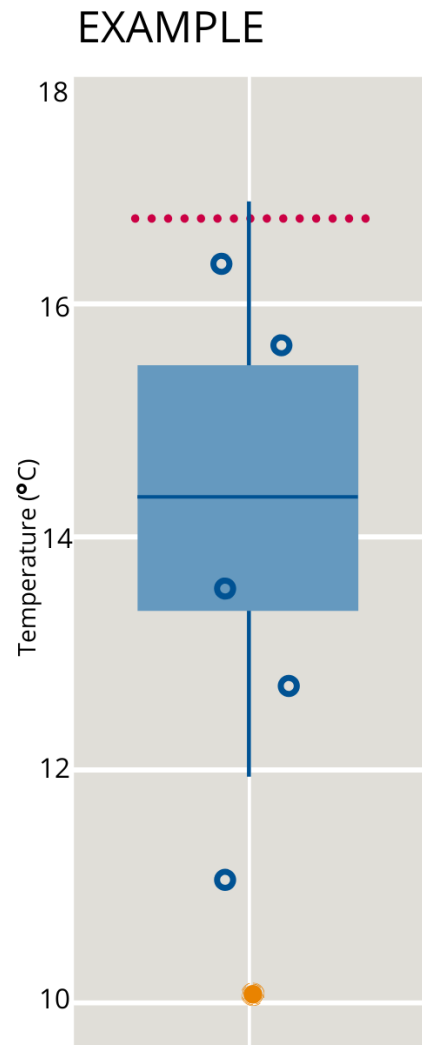
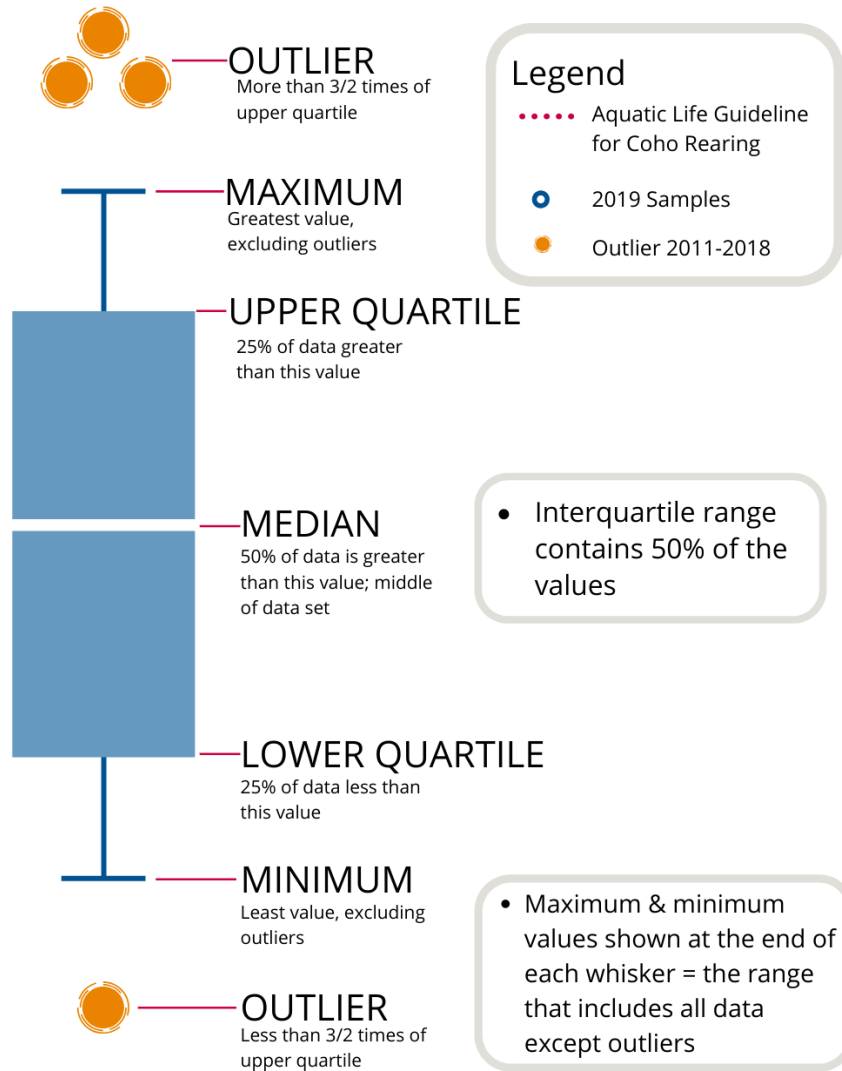
The table below shows the sites monitored by each of the streamkeeper organizations, as well as the number of years and which years a site was sampled. The number of years is important to keep in mind when interpreting the box plots as the plot for each site may contain a slightly different temporal range.

Group	EMS ID	Geographic Description	Years Sampled	Years Monitored
CoN	E318155	South Wexford Ck at Community Park (Glenford PI)	6	2019 - present
CoN	E318152	Wexford Ck just d/s Douglas Ave	6	2019 - present
CoN	E318172	Wexford Ck just u/s seniors complex	6	2019 - present
CoN	E318153	Wexford Ck just d/s Tenth St	6	2019 - present
CoN	E318154	Wexford Ck ~20m d/s confluence of N and main arm	6	2019 - present
NALT	E287699	Nanaimo River u/s Haslam Ck ~500m d/s hwy bridge	14	2011 - present
NALT	E215789	Nanaimo River at Cedar Rd bridge	11	2014 - present
NALT	E321395	Richards Creek 5m u/s Frames Rd	5	2020 - present
NALT	E290487	Beck Creek @ Cedar Rd	13	2012 - present
NALT	E310147	Holden Creek off East side of Lazo Lane	7.5	2017 – present*

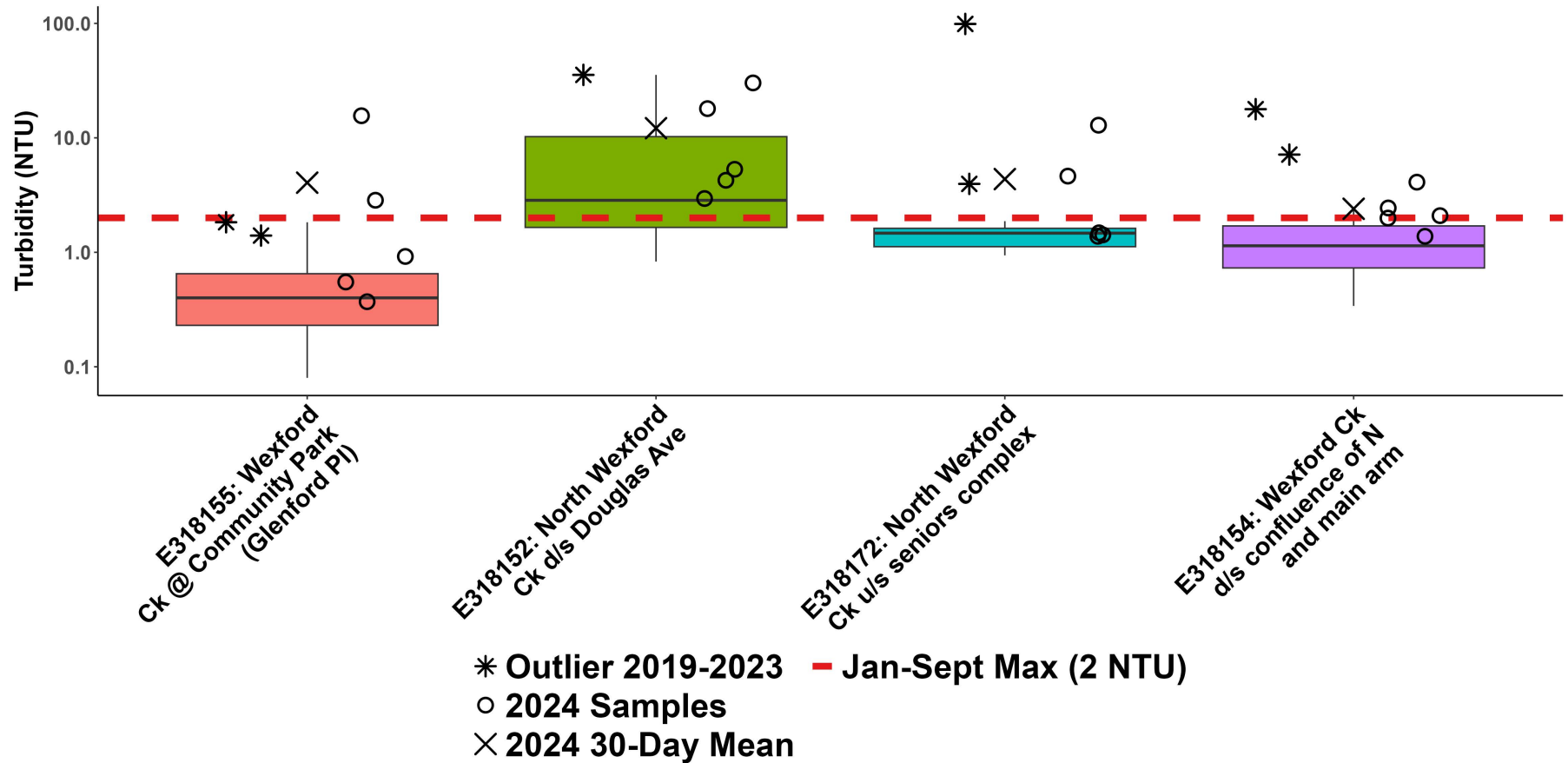
*\*Sampled in 2017 fall period only.*



# How to Interpret a Box Plot:

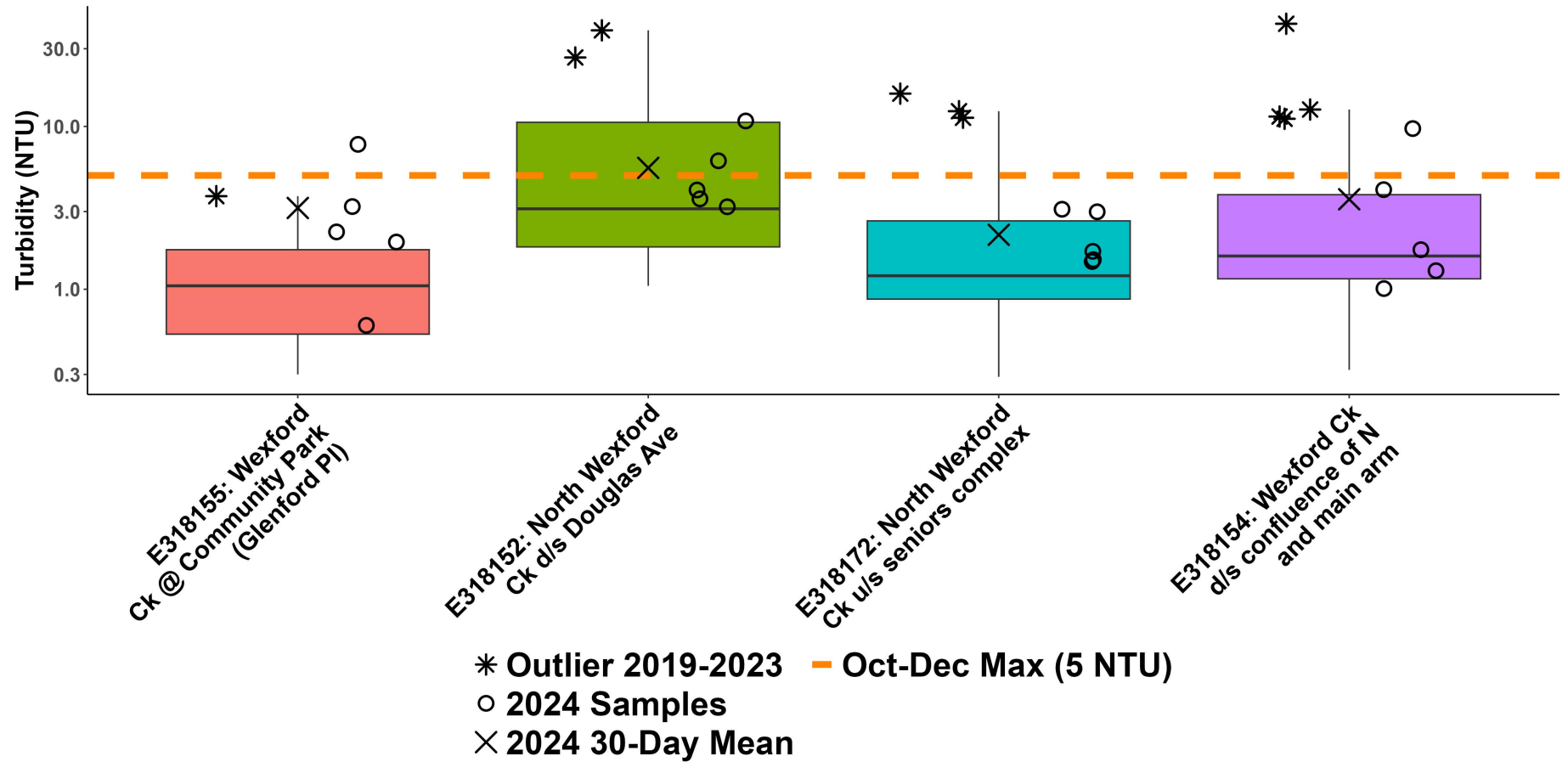


## WR6a: Nanaimo River Summer Turbidity

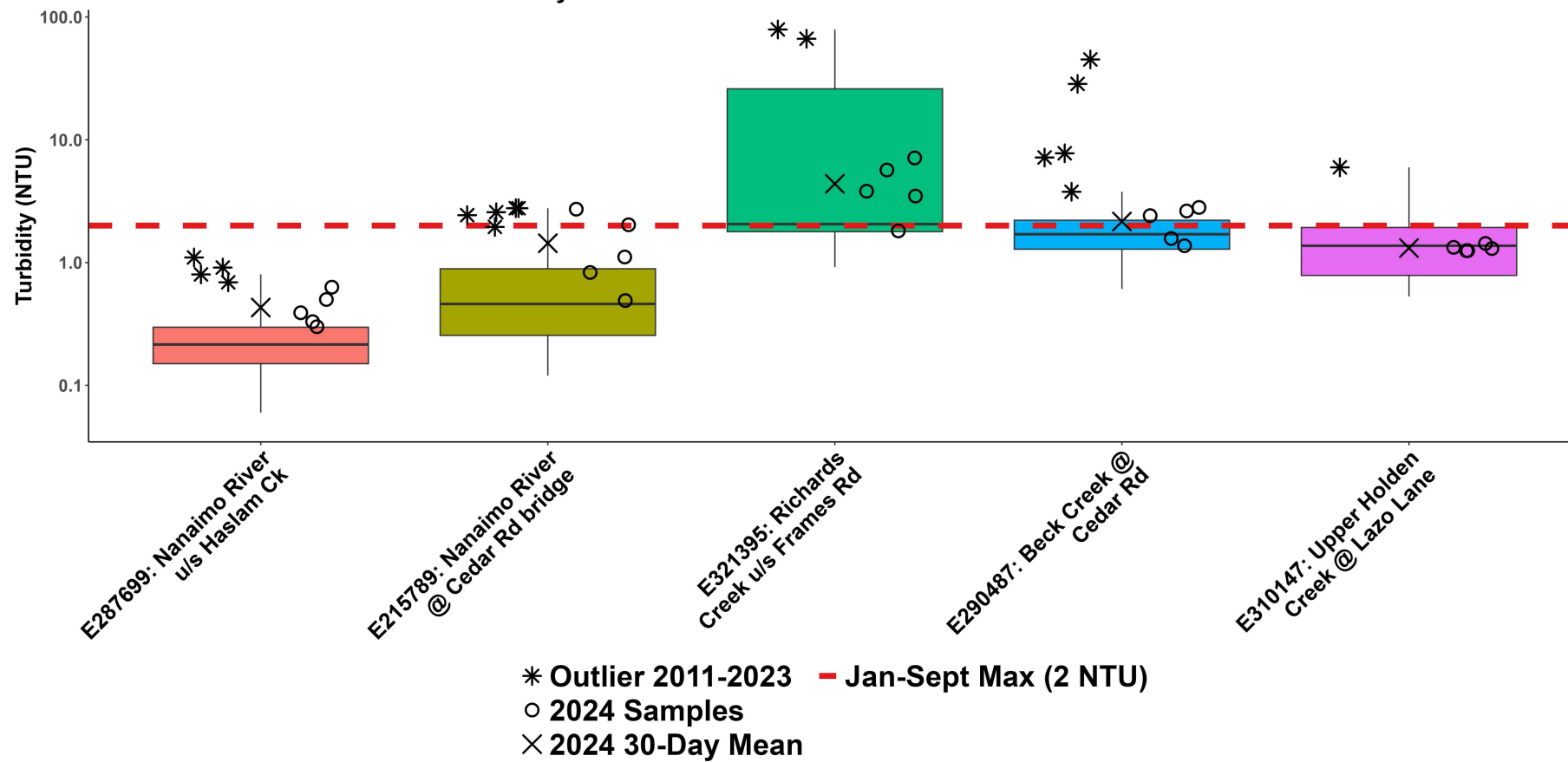




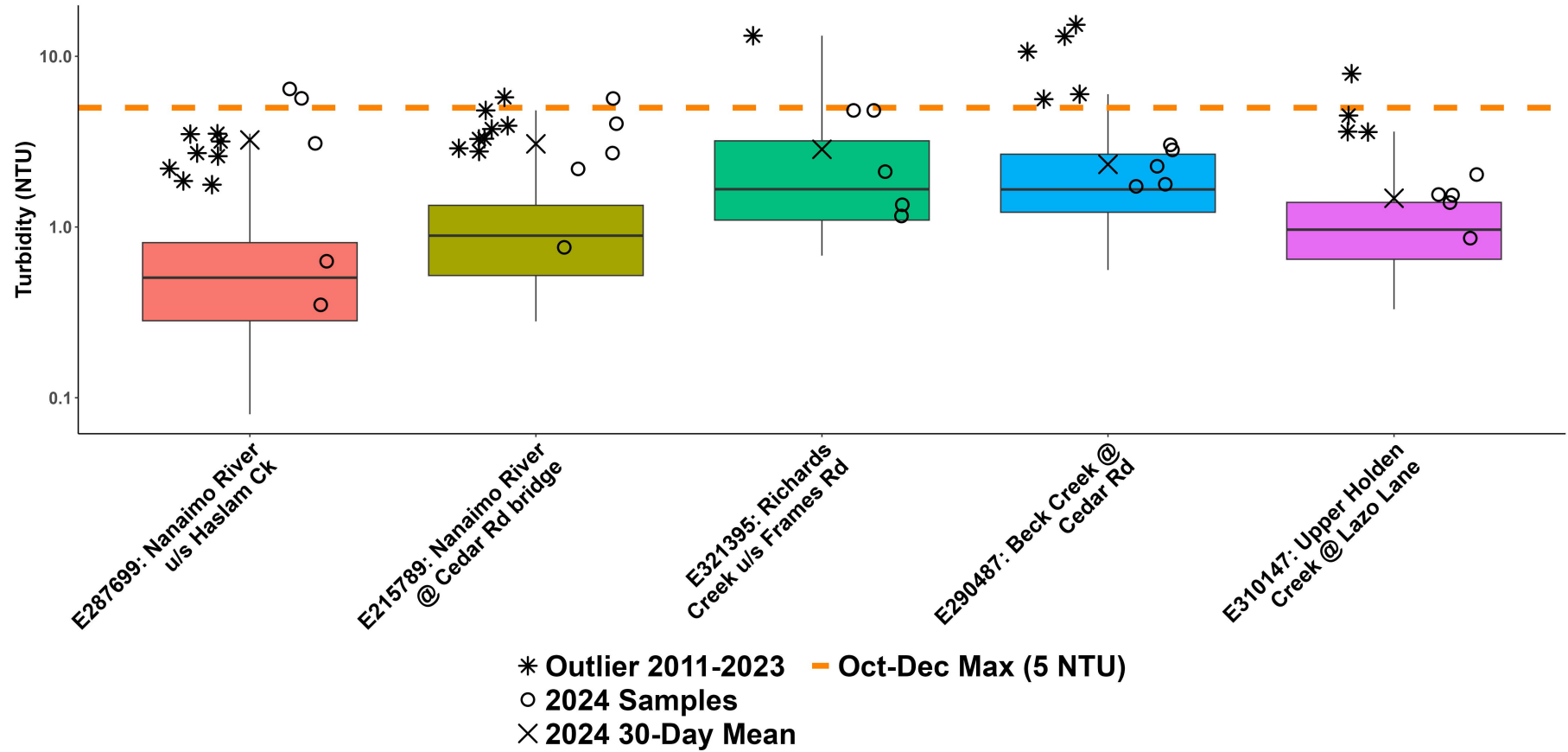
## WR6a: Nanaimo River Fall Turbidity

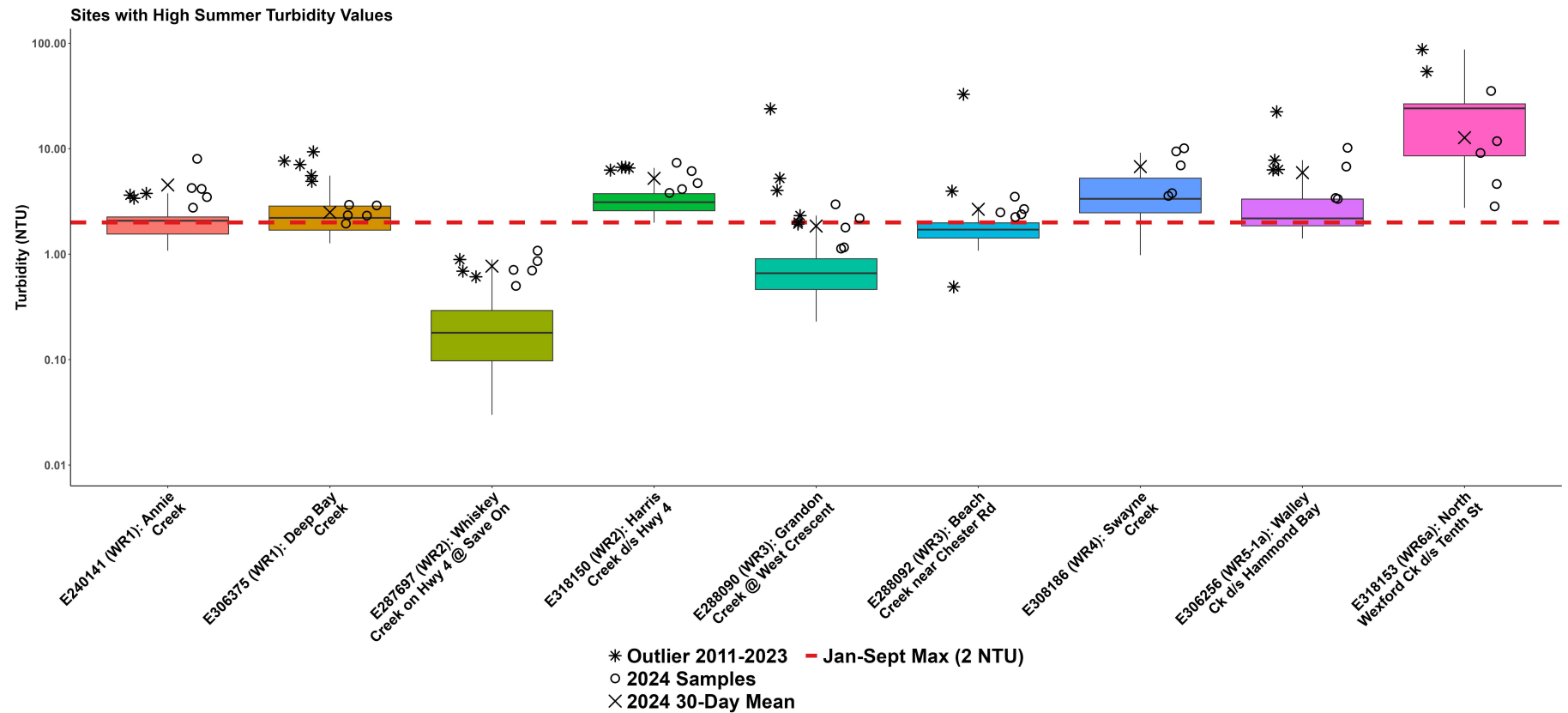


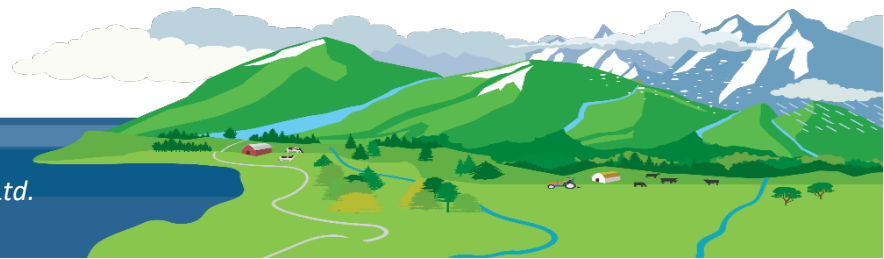
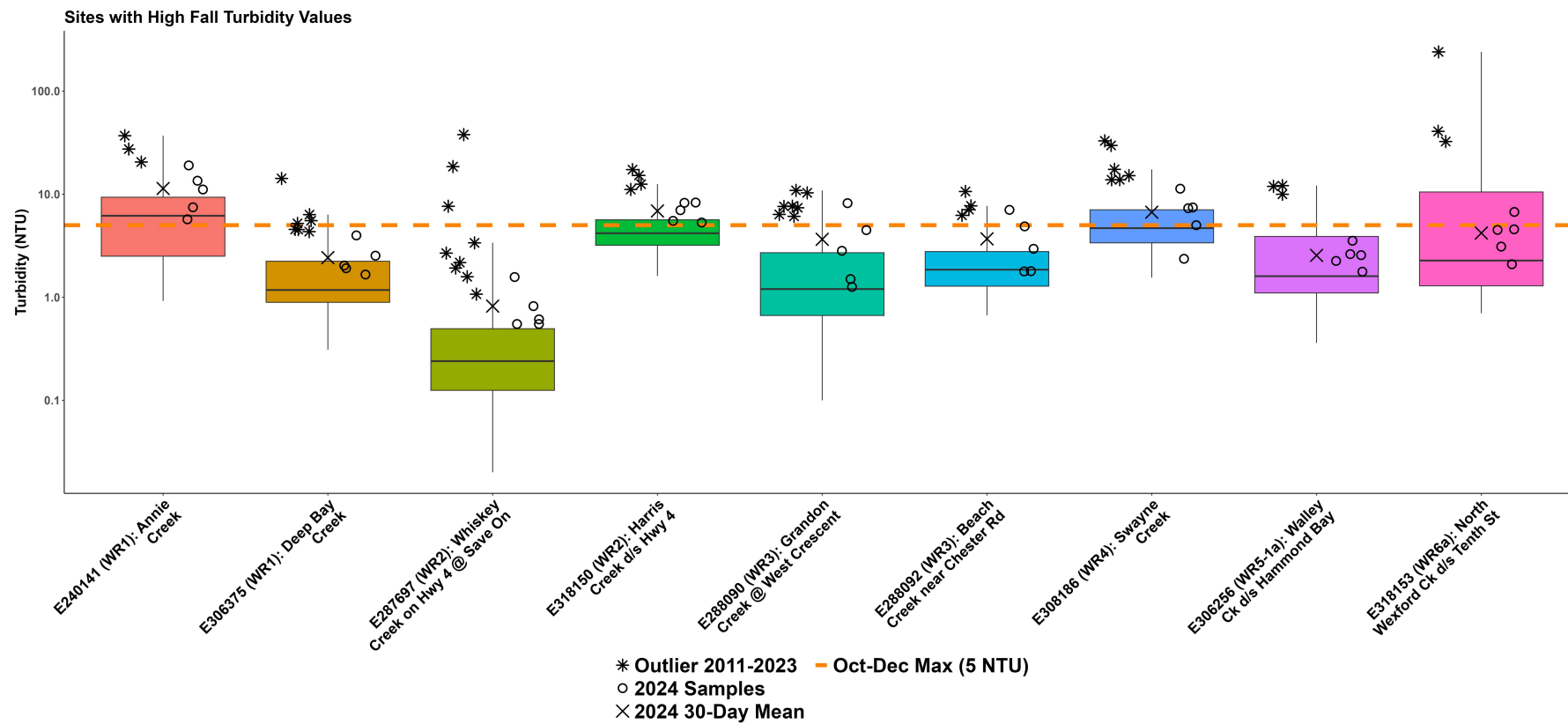
WR6b: Nanaimo River Summer Turbidity



## WR6b: Nanaimo River Fall Turbidity

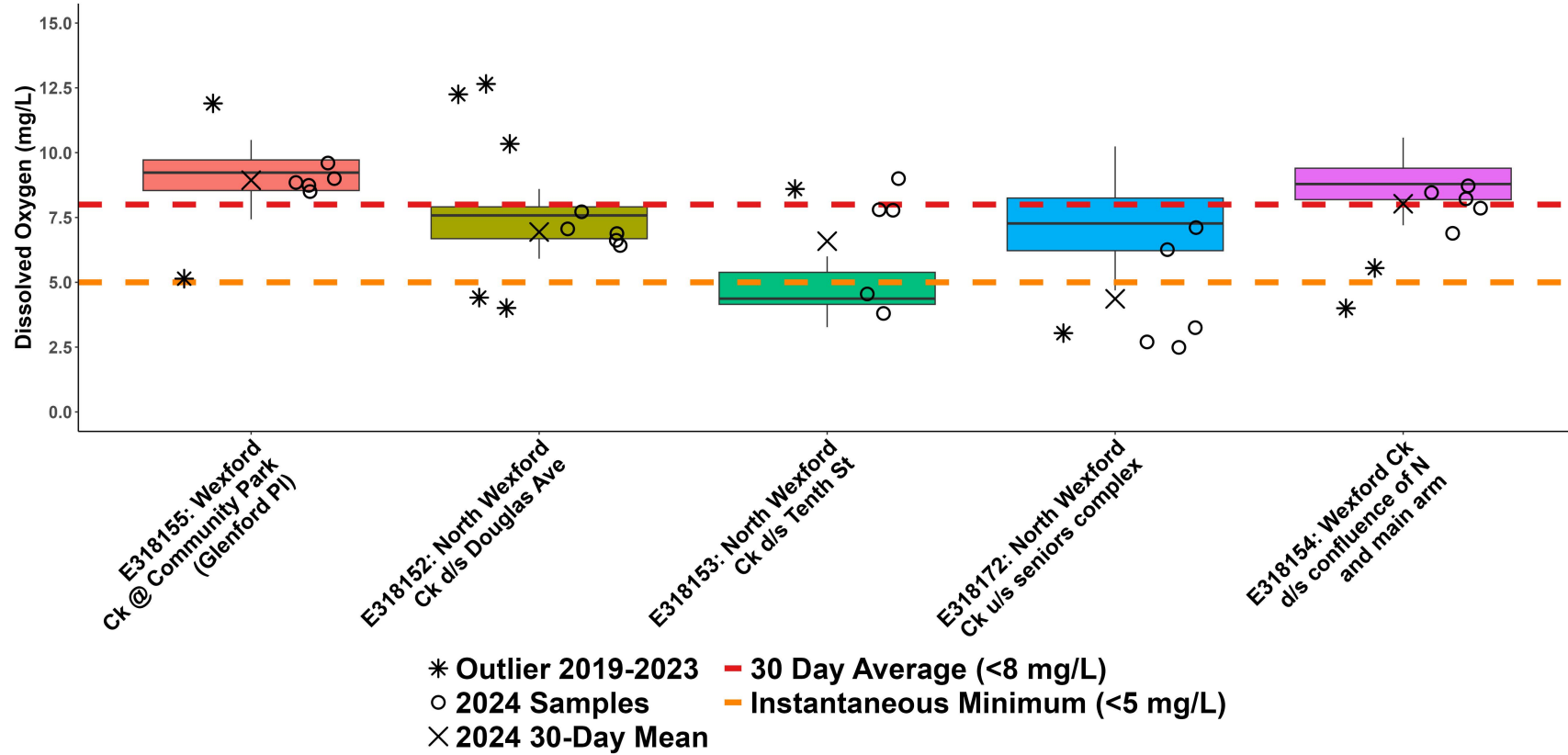




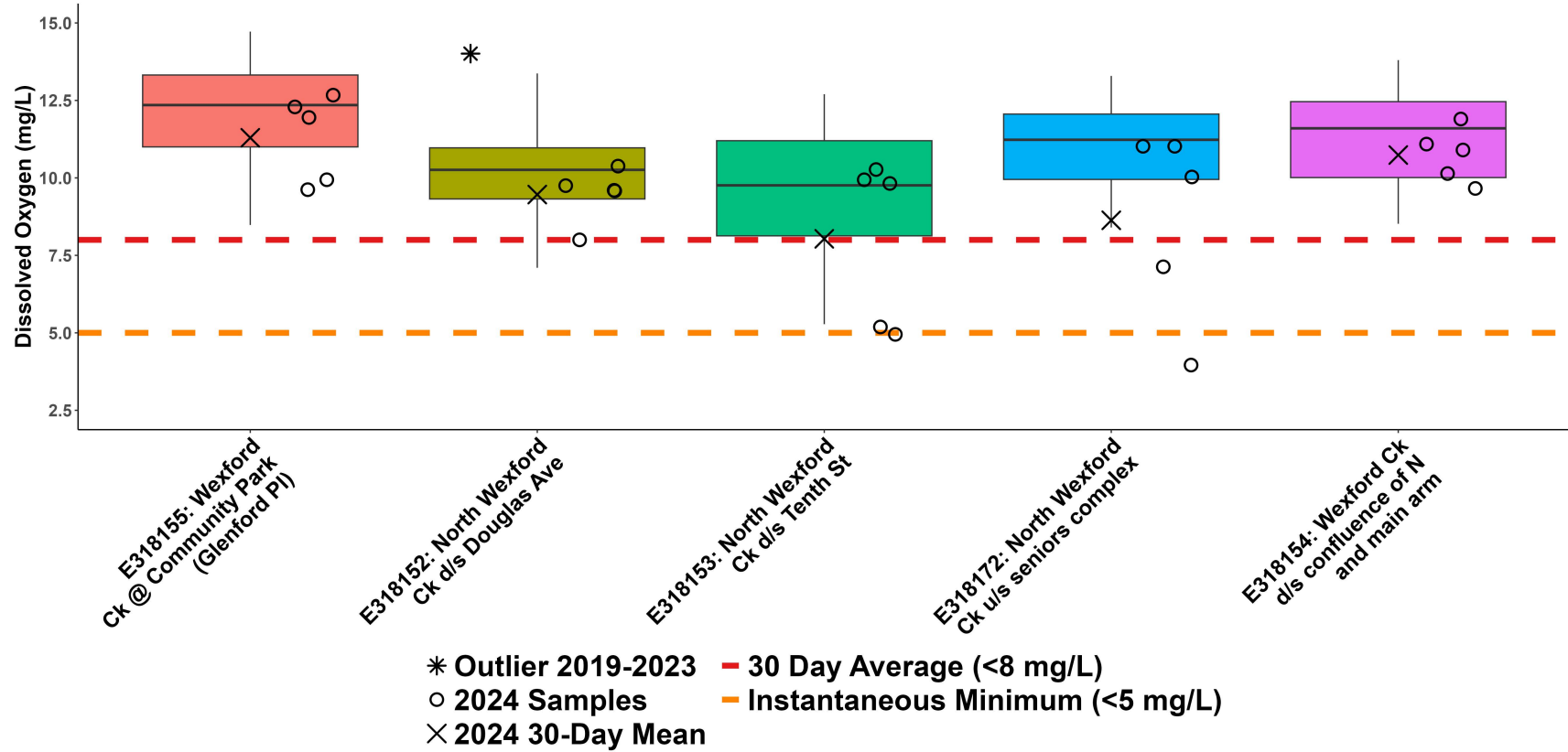




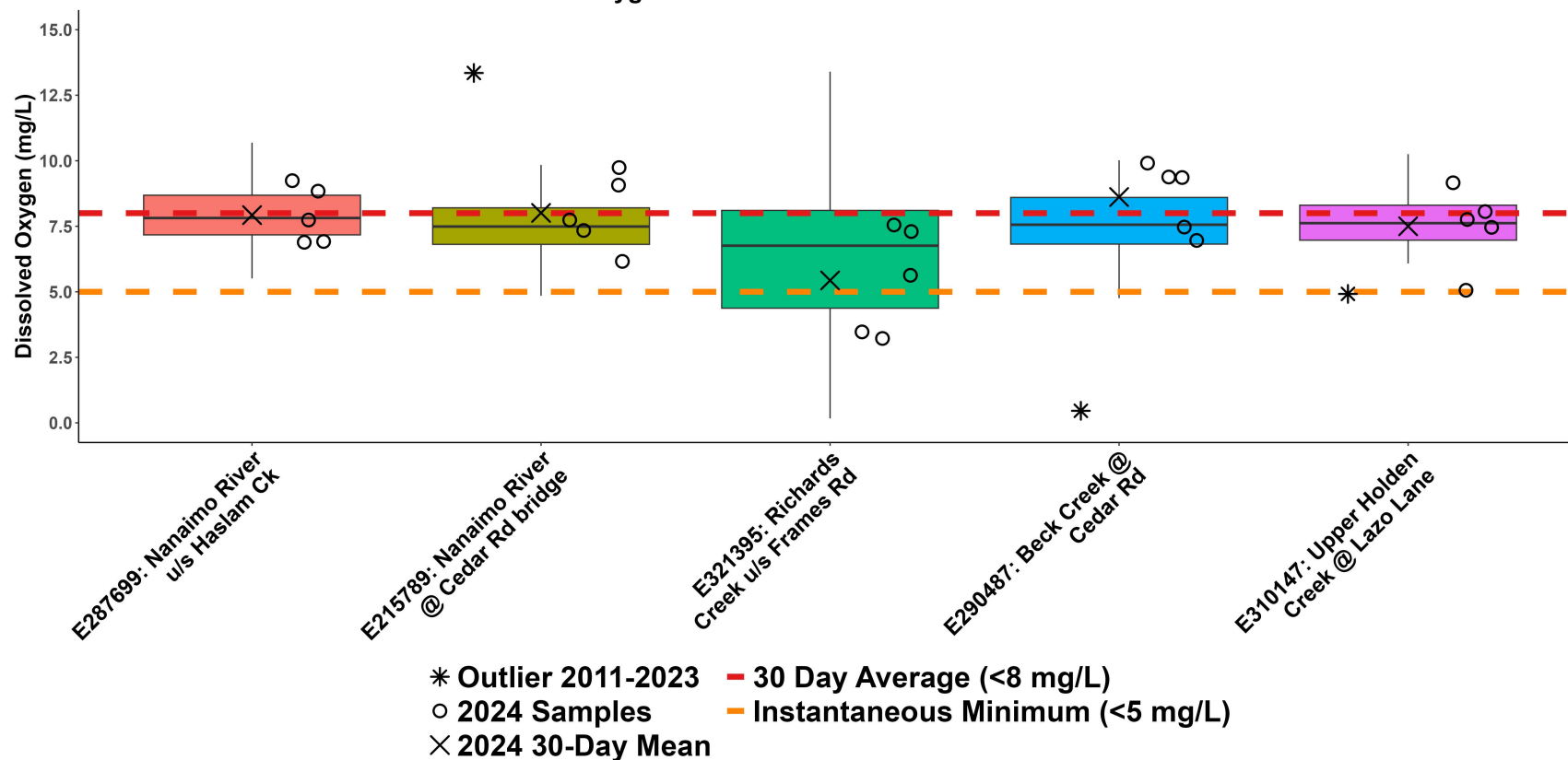
WR6a: Nanaimo River Summer Dissolved Oxygen



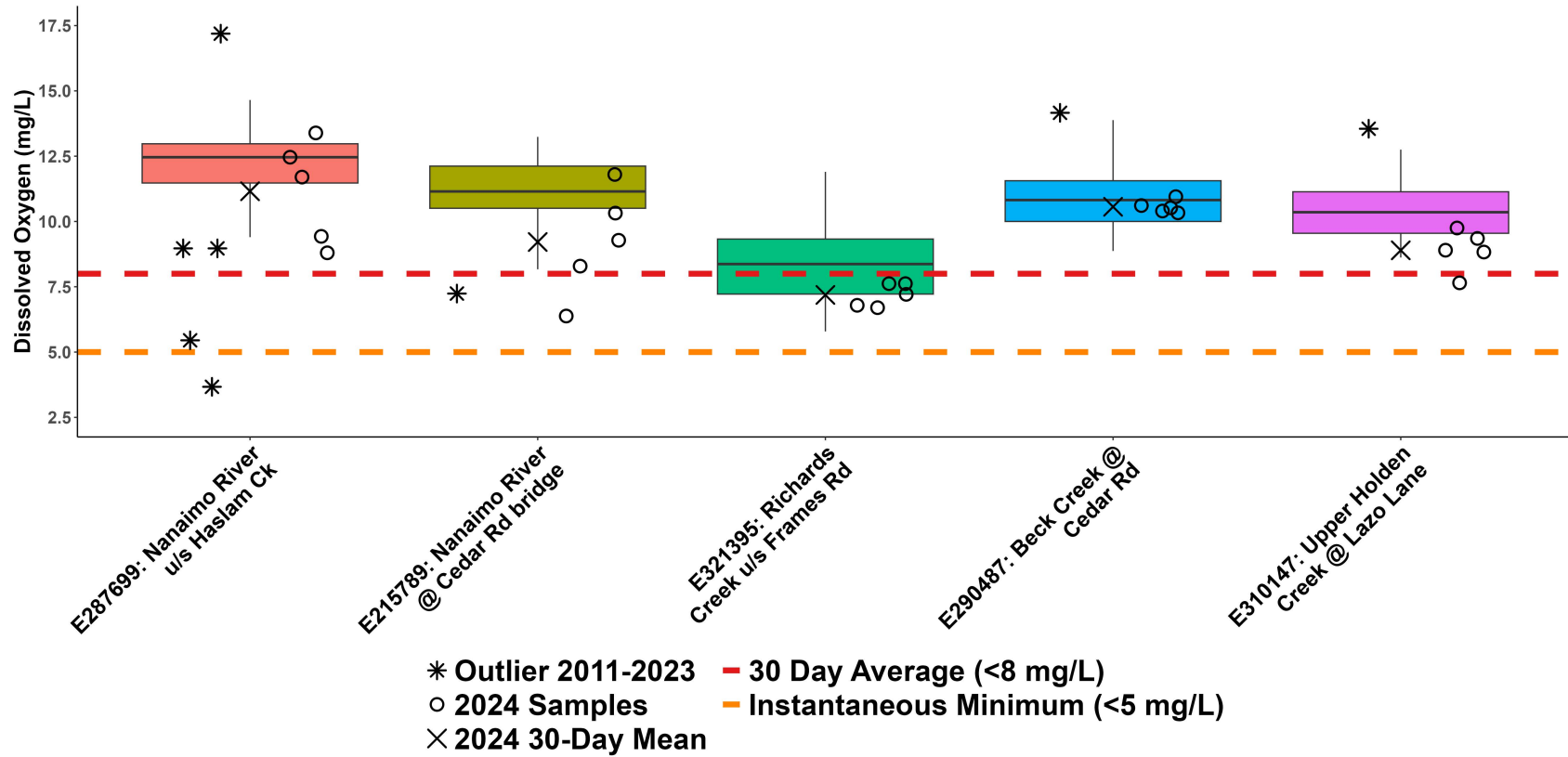
# WR6a: Nanaimo River Fall Dissolved Oxygen



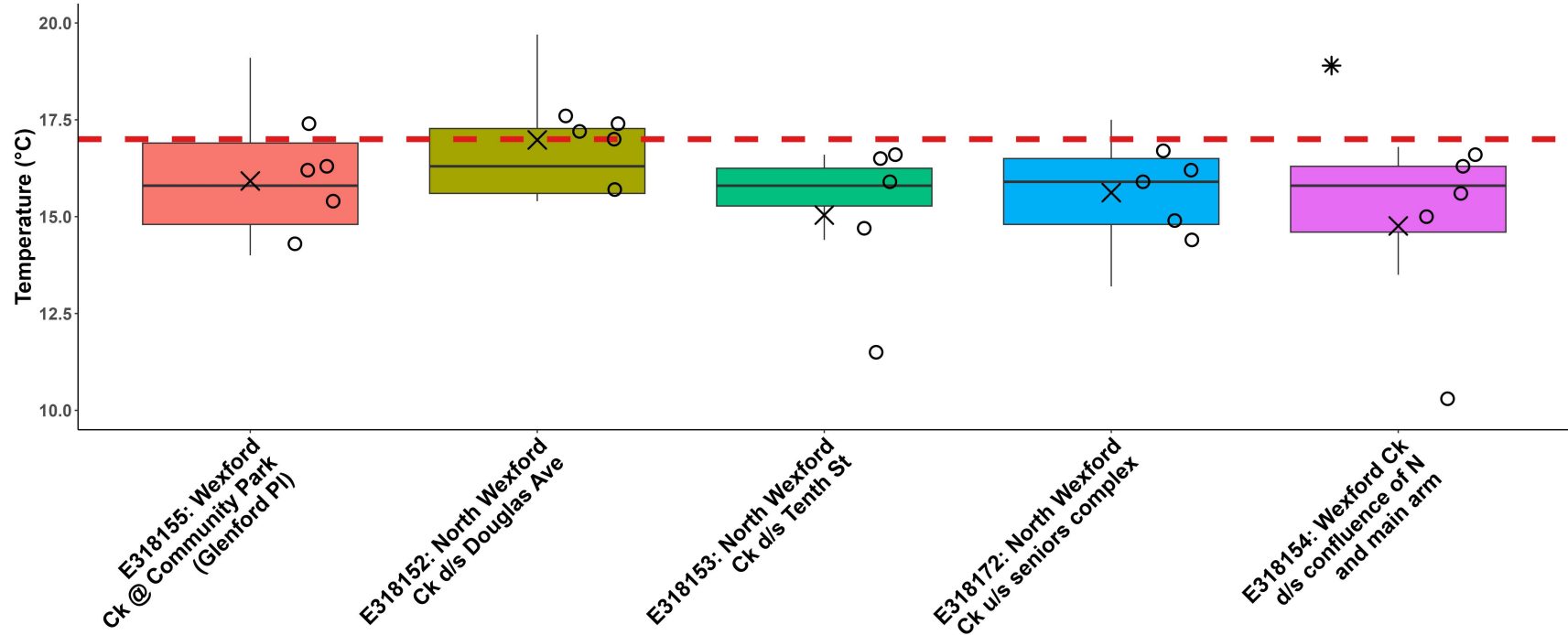
# WR6b: Nanaimo River Summer Dissolved Oxygen



WR6b: Nanaimo River Fall Dissolved Oxygen



# WR6a: Nanaimo River Summer Temperature

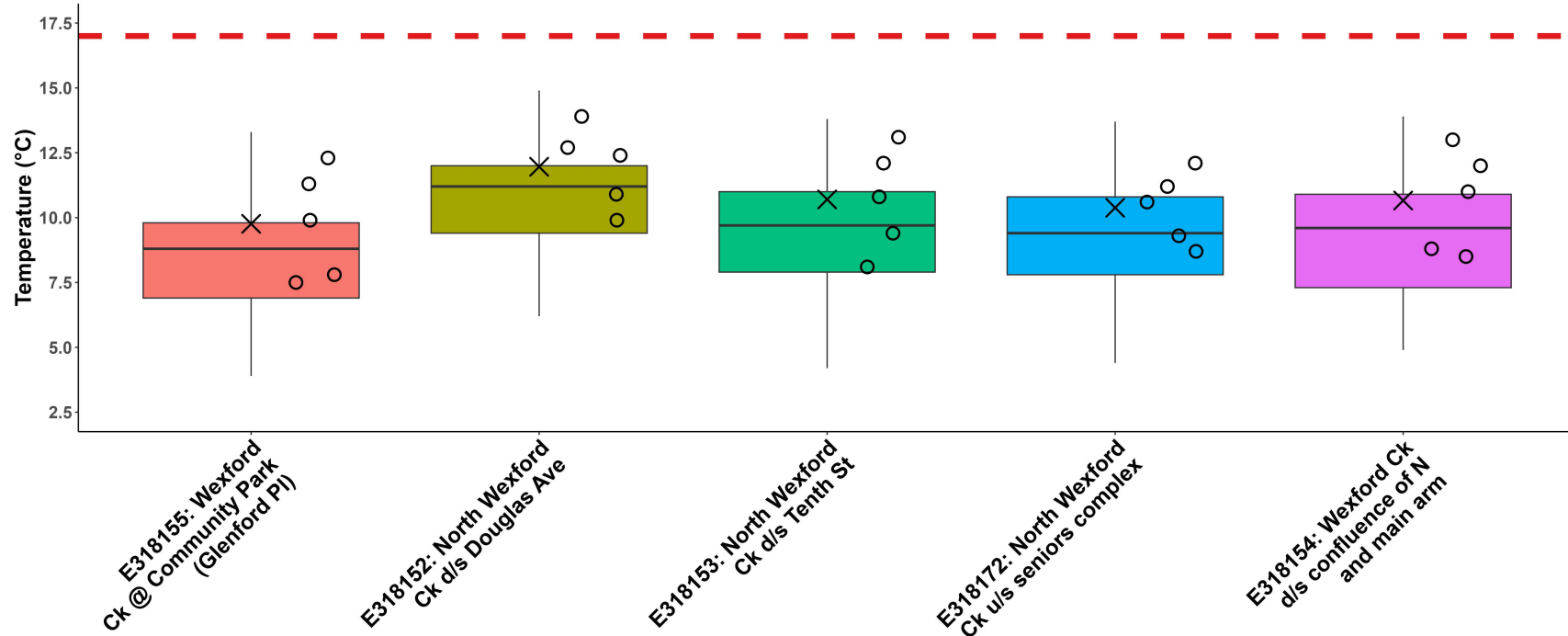


\* Outlier 2019-2023    - Aquatic Life Guideline for Coho Rearing (17°C)  
 ○ 2024 Samples  
 X 2024 30-Day Mean





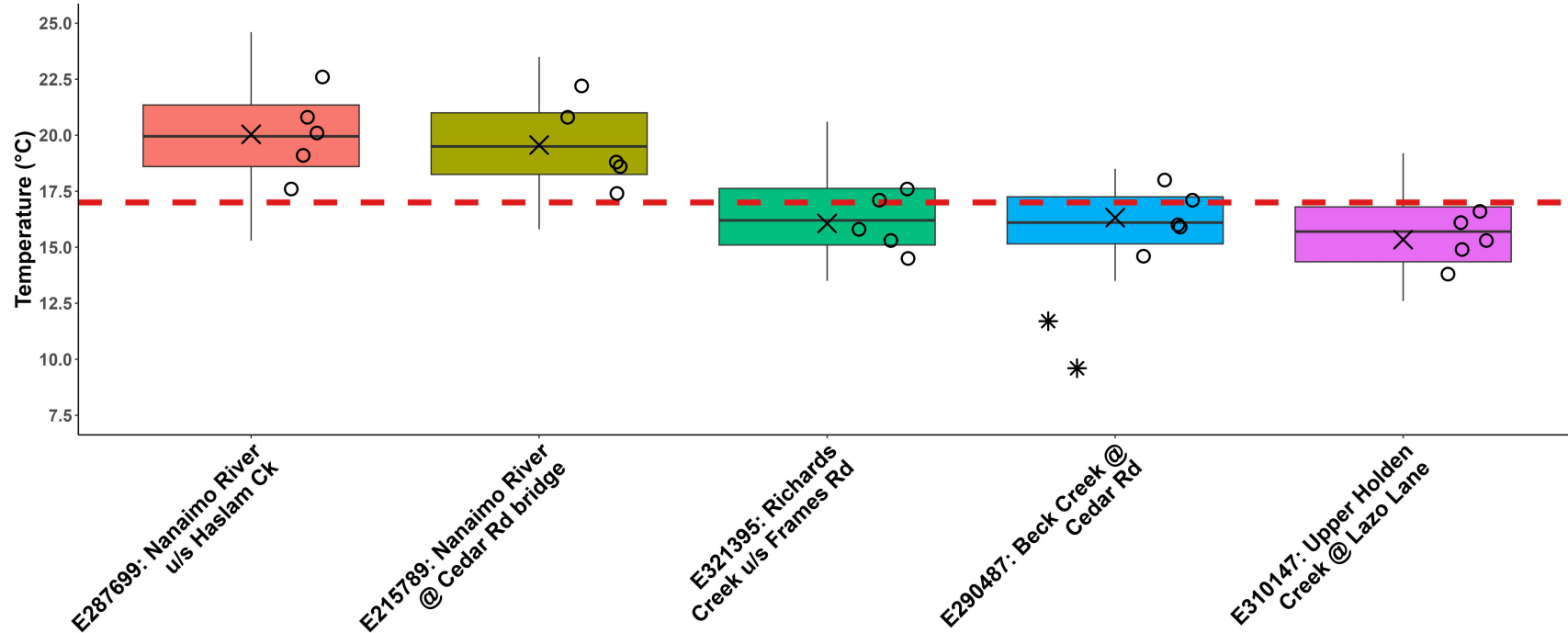
# WR6a: Nanaimo River Fall Temperature



\* Outlier 2019-2023 — Aquatic Life Guideline for Coho Rearing (17°C)  
 ○ 2024 Samples  
 × 2024 30-Day Mean



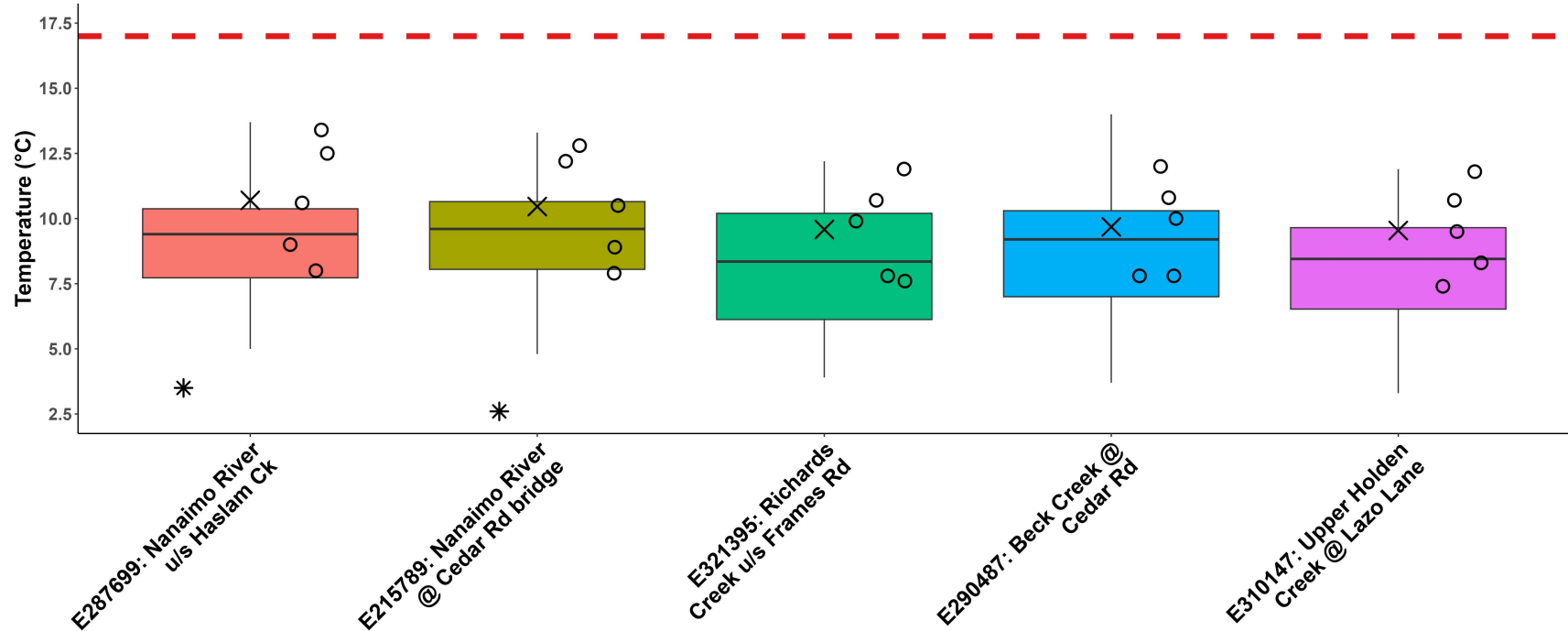
**WR6b: Nanaimo River Summer Temperature**



\* Outlier 2011-2023    - Aquatic Life Guideline for Coho Rearing (17°C)  
 o 2024 Samples  
 X 2024 30-Day Mean



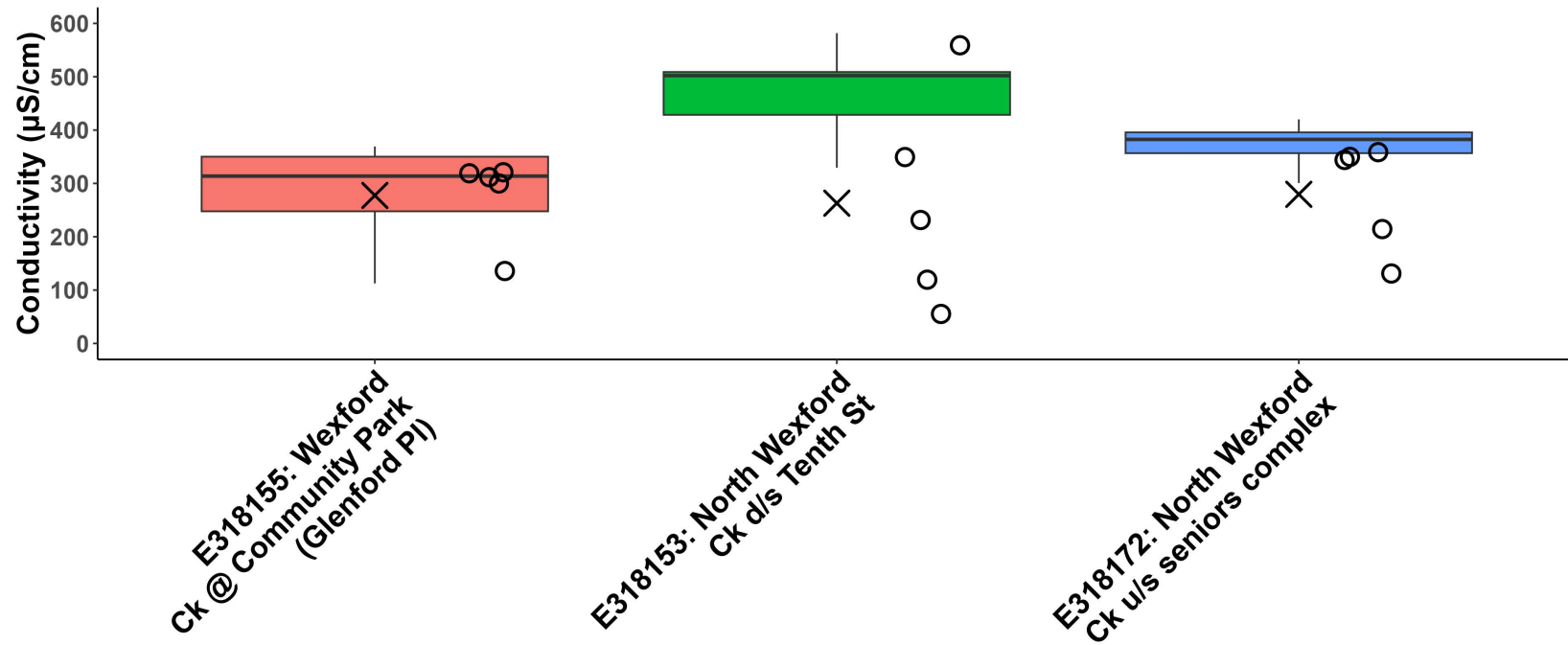
# WR6b: Nanaimo River Fall Temperature



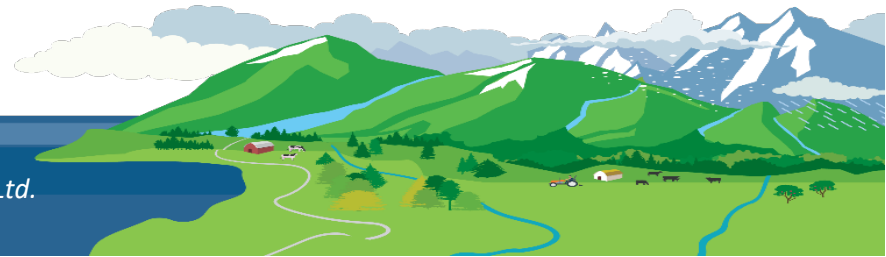
\* Outlier 2011-2023    - Aquatic Life Guideline for Coho Rearing (17°C)  
 ○ 2024 Samples  
 X 2024 30-Day Mean



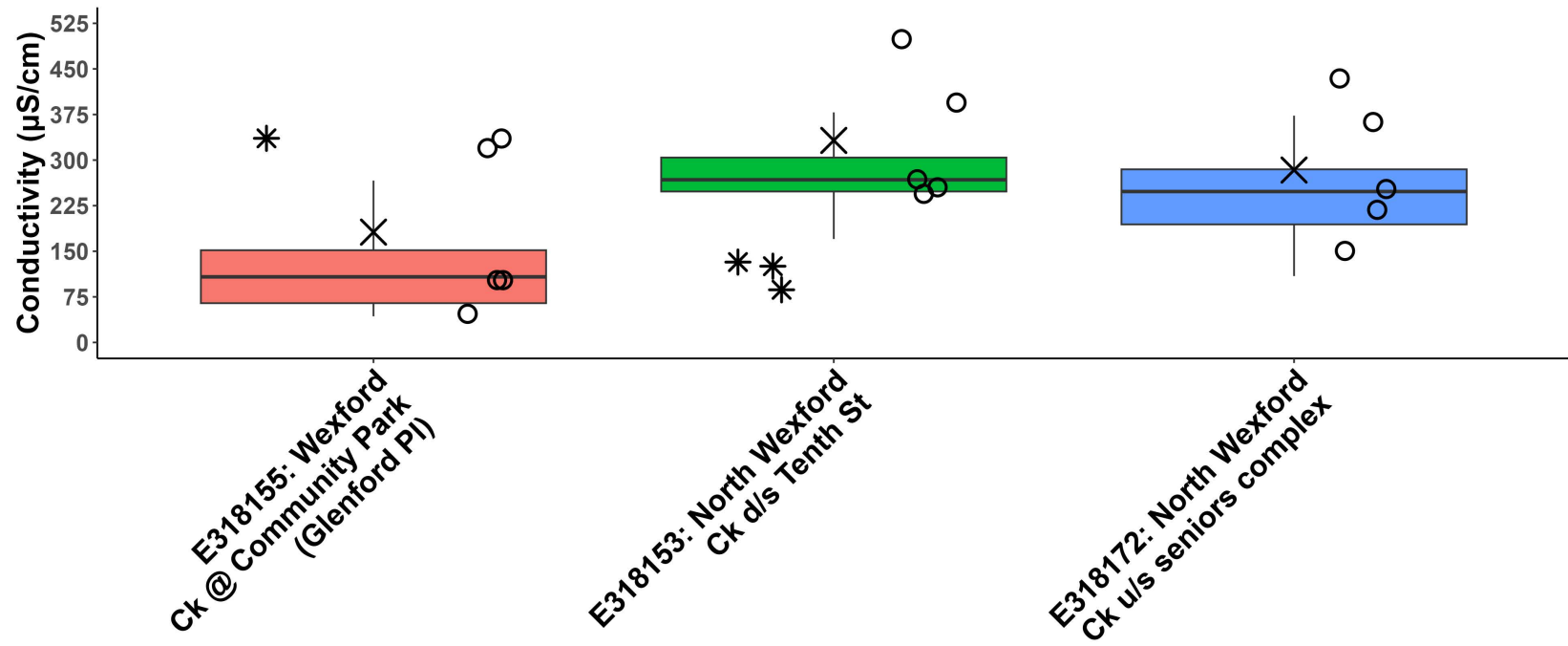
## WR6a: Nanaimo River Summer Conductivity



\* Outlier 2019-2023  
○ 2024 Samples  
× 2024 30-Day Mean



## WR6a: Nanaimo River Fall Conductivity

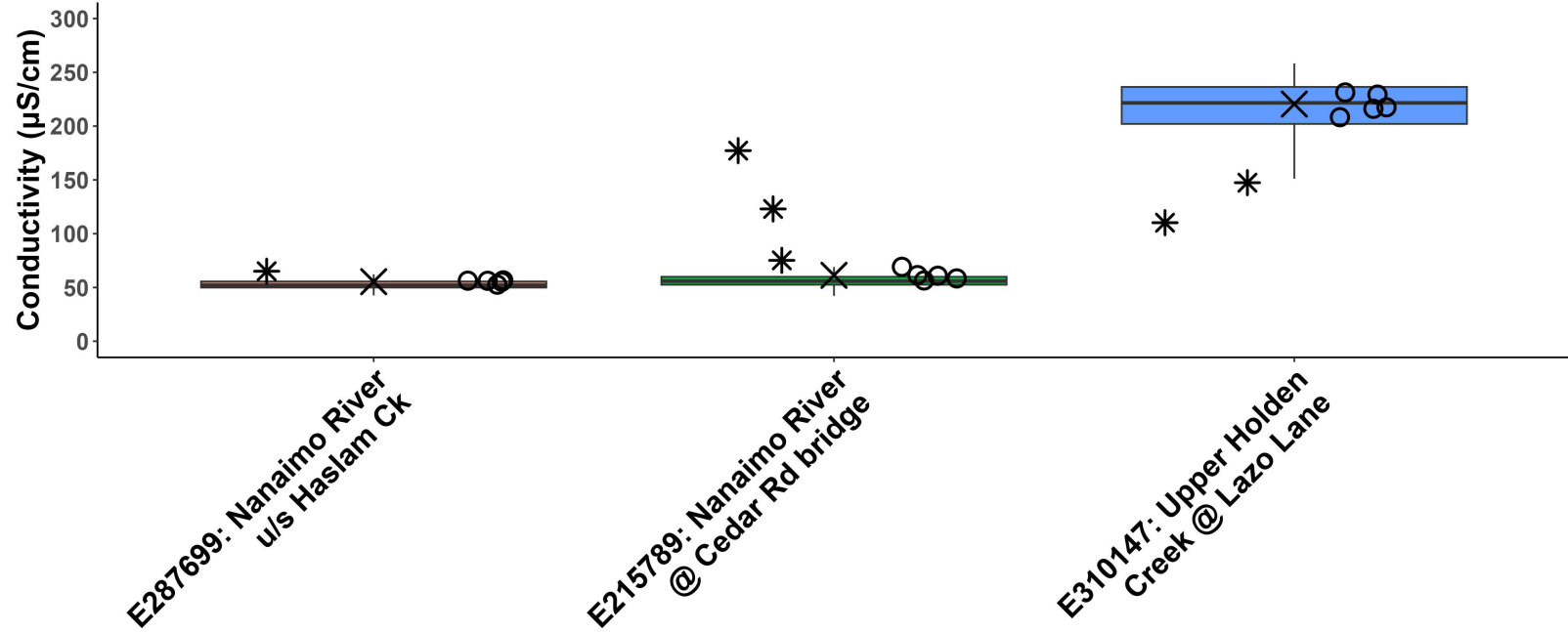


\* Outlier 2019-2023  
 ○ 2024 Samples  
 × 2024 30-Day Mean





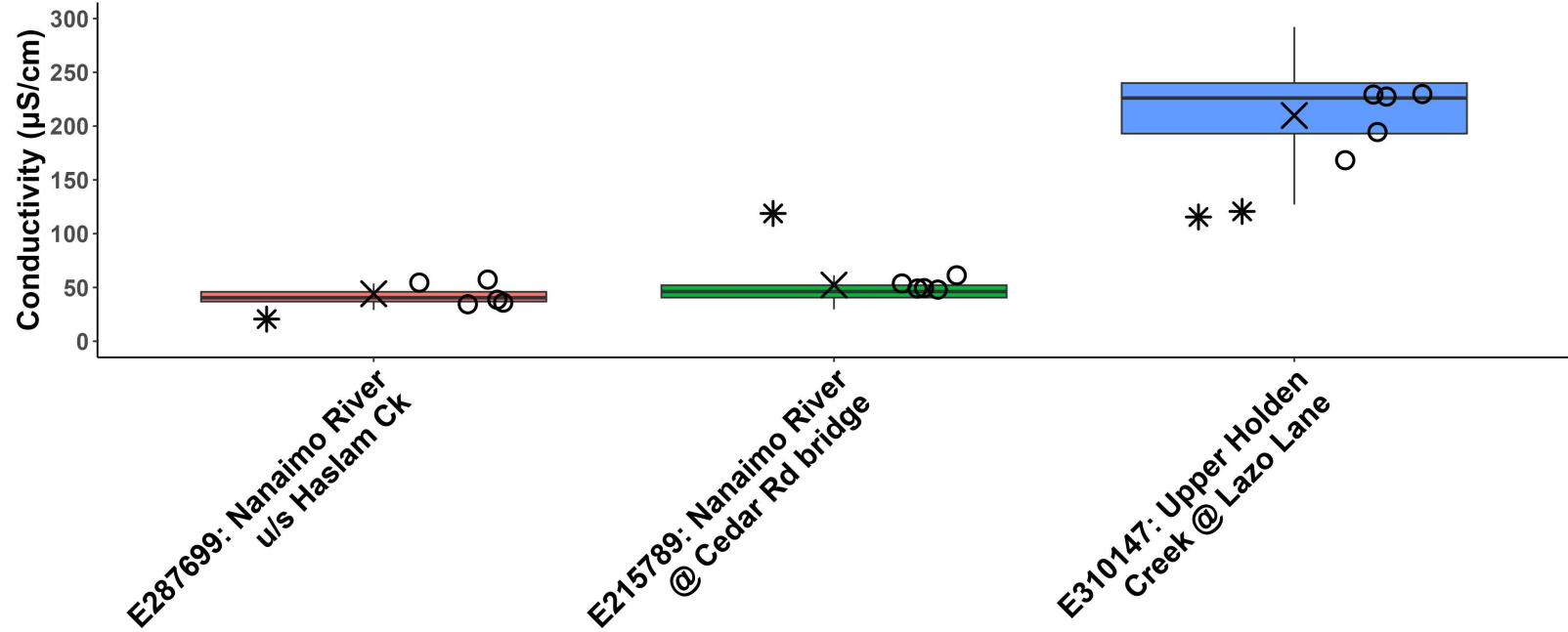
## WR6b: Nanaimo River Summer Conductivity



\* Outlier 2011-2023  
○ 2024 Samples  
× 2024 30-Day Mean

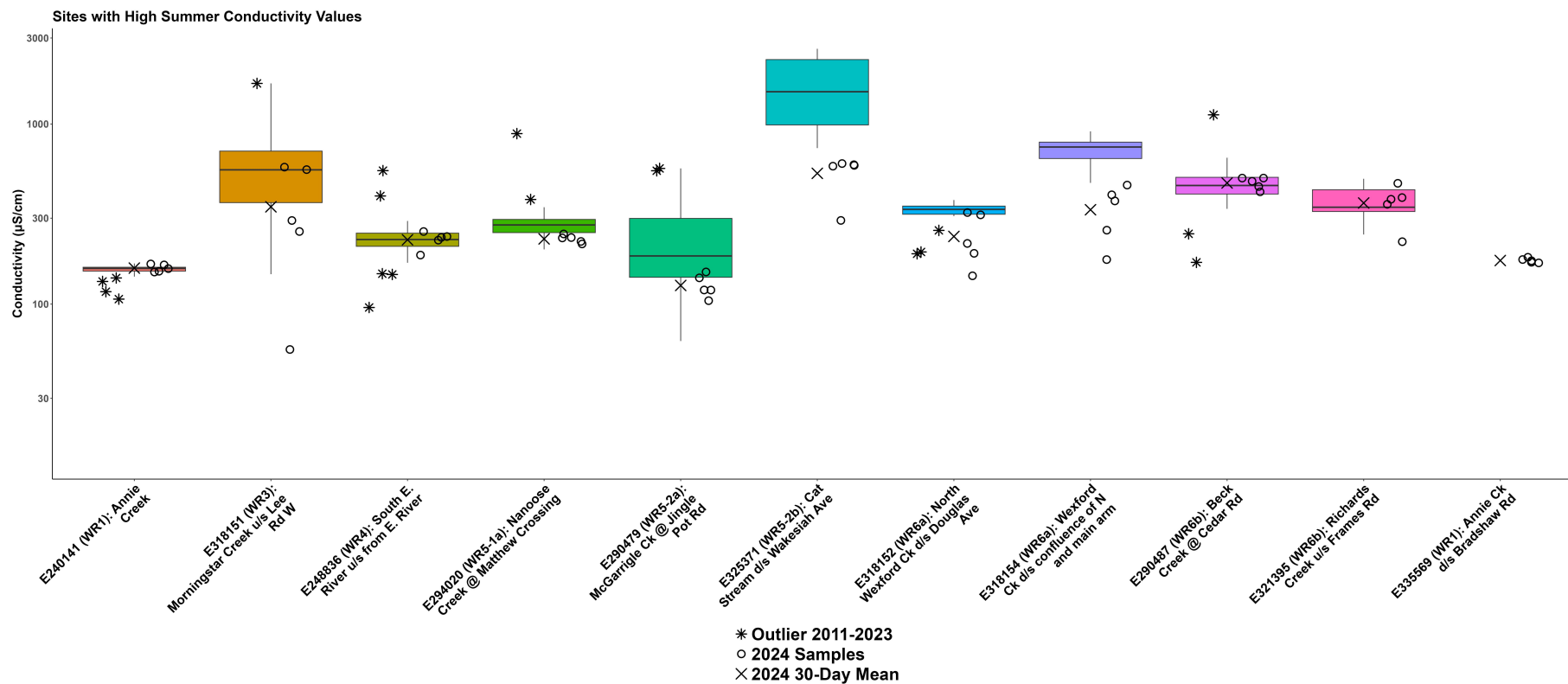


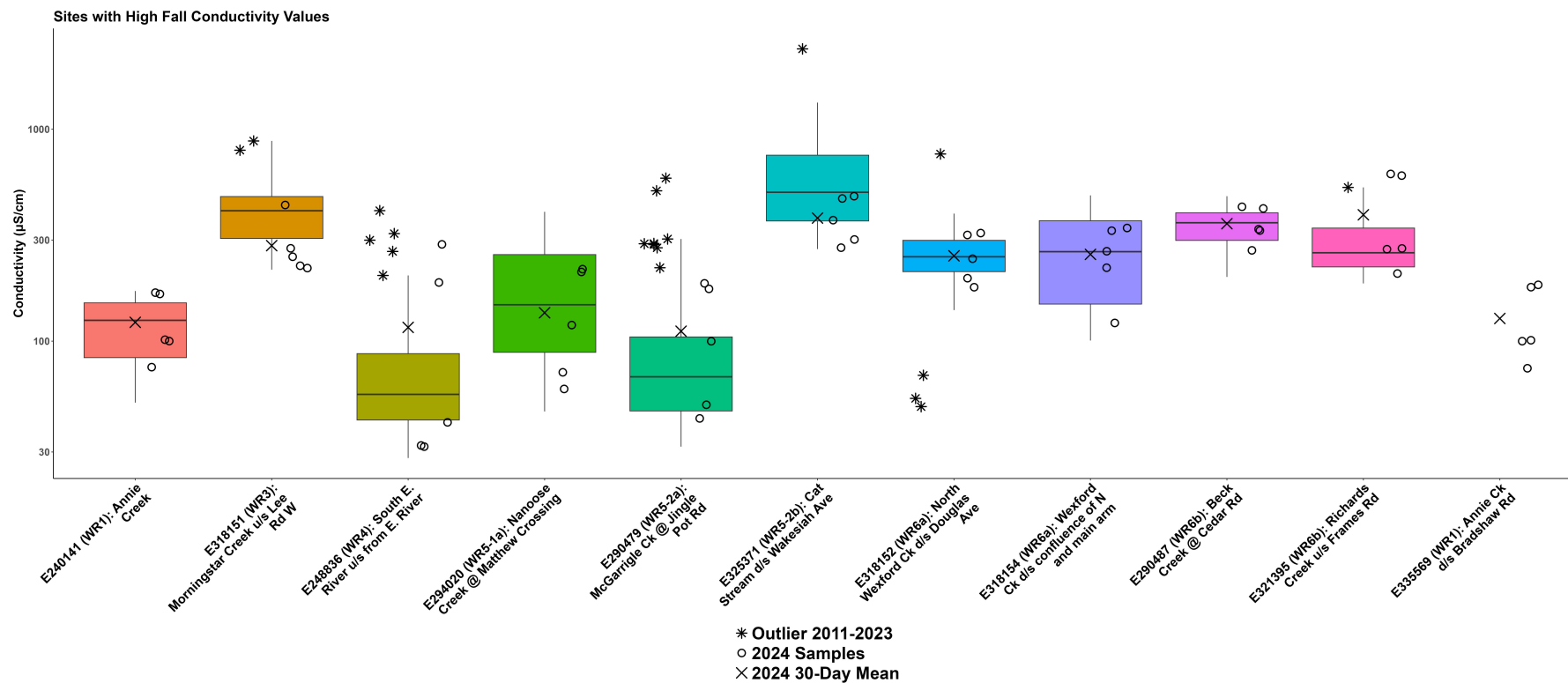
## WR6b: Nanaimo River Fall Conductivity



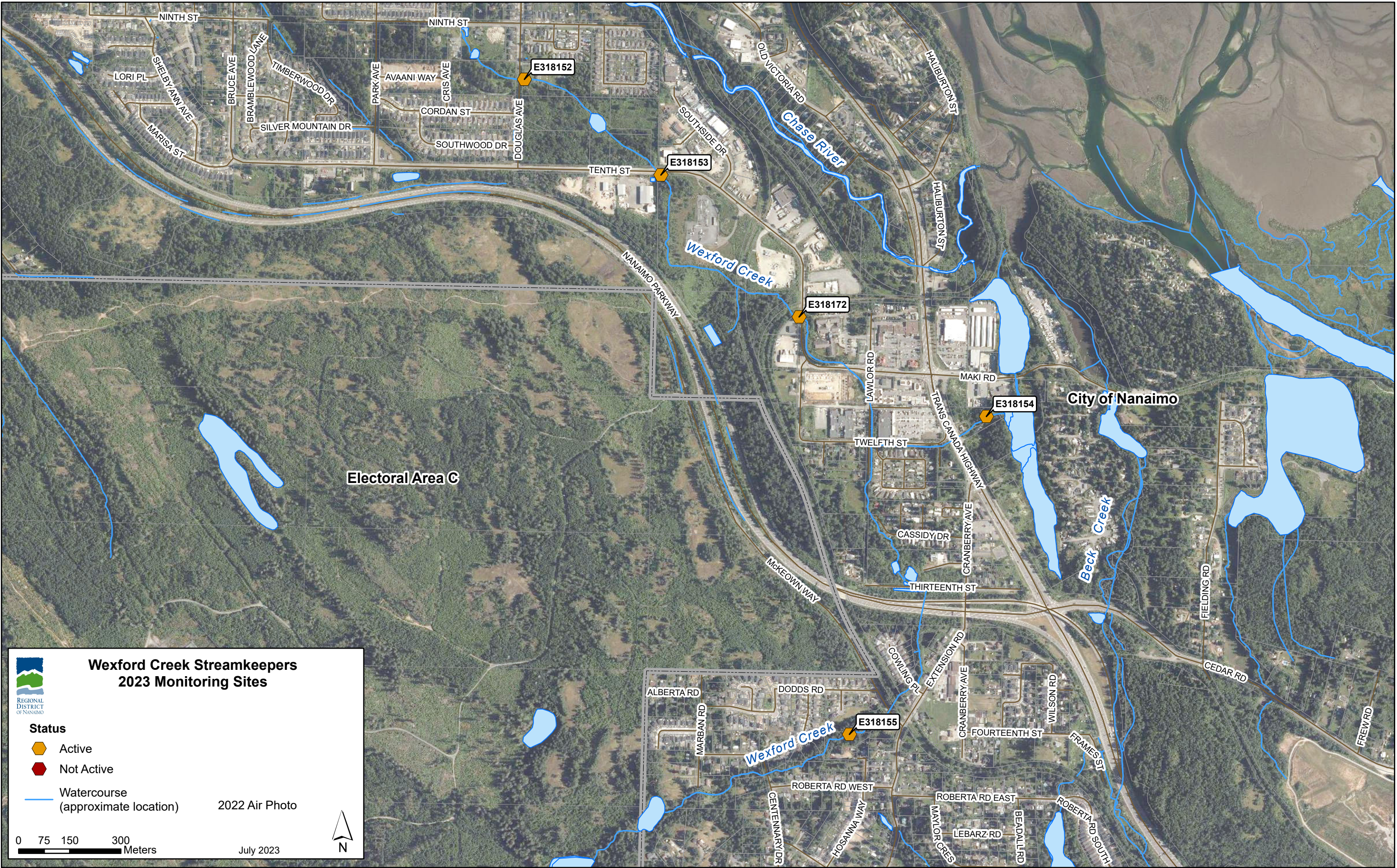
- \* Outlier 2011-2023
- 2024 Samples
- × 2024 30-Day Mean











# Wexford Creek Streamkeepers 2023 Monitoring Sites

## Status

- Active
- Not Active

Watercourse  
(approximate location)

2022 Air Photo

0 75 150 300  
Meters

July 2023





