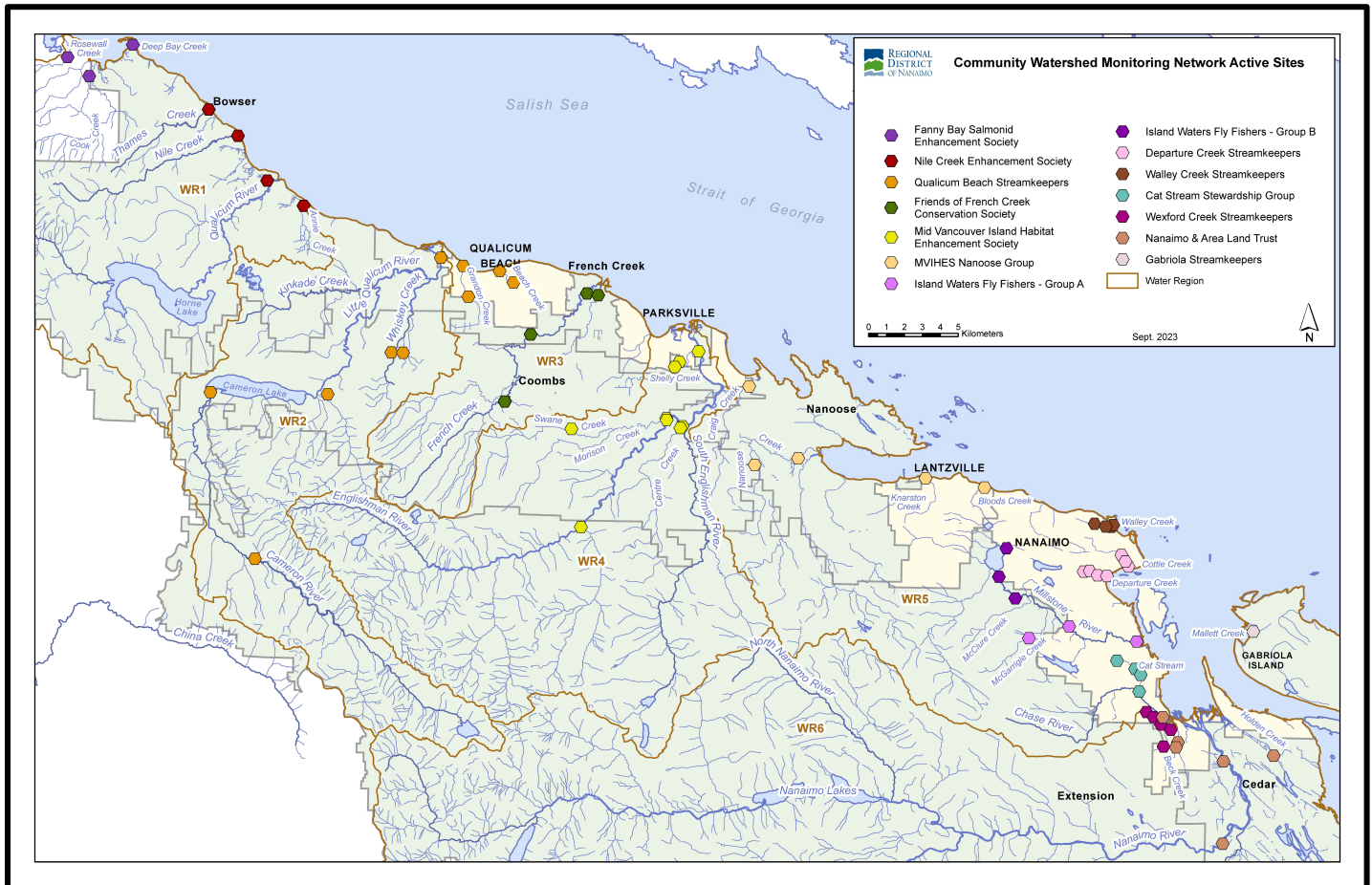


Community Watershed Monitoring Network 2023 Results by Water Region



Included in Water Region (WR) 6 package:

1. CWMN WR6 sample sites
2. How to interpret a box plot
3. Box Plot Comparison – 2023 data to previous years: *displayed by parameter (Turbidity, Dissolved Oxygen, Temperature, Conductivity) & sample period (summer, fall)*
4. Wexford Creek Streamkeepers (WxCS) map
5. Nanaimo and Area Land Trust (NALT) map



Water Region 6
sampled by:
Wexford Creek Streamkeepers (WxCS)
&
Nanaimo and Area Land Trust (NALT)

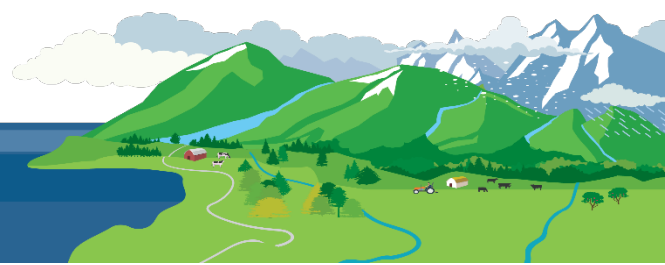


WR6 CWMN Sample Sites:

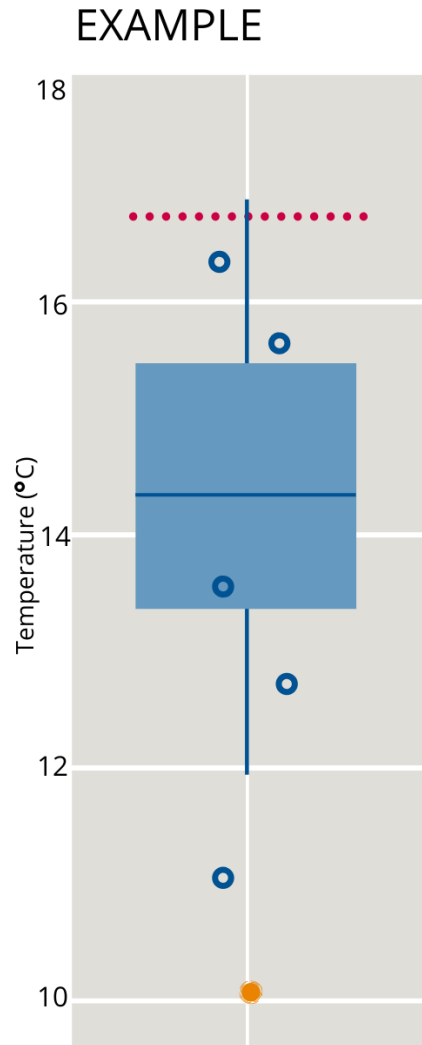
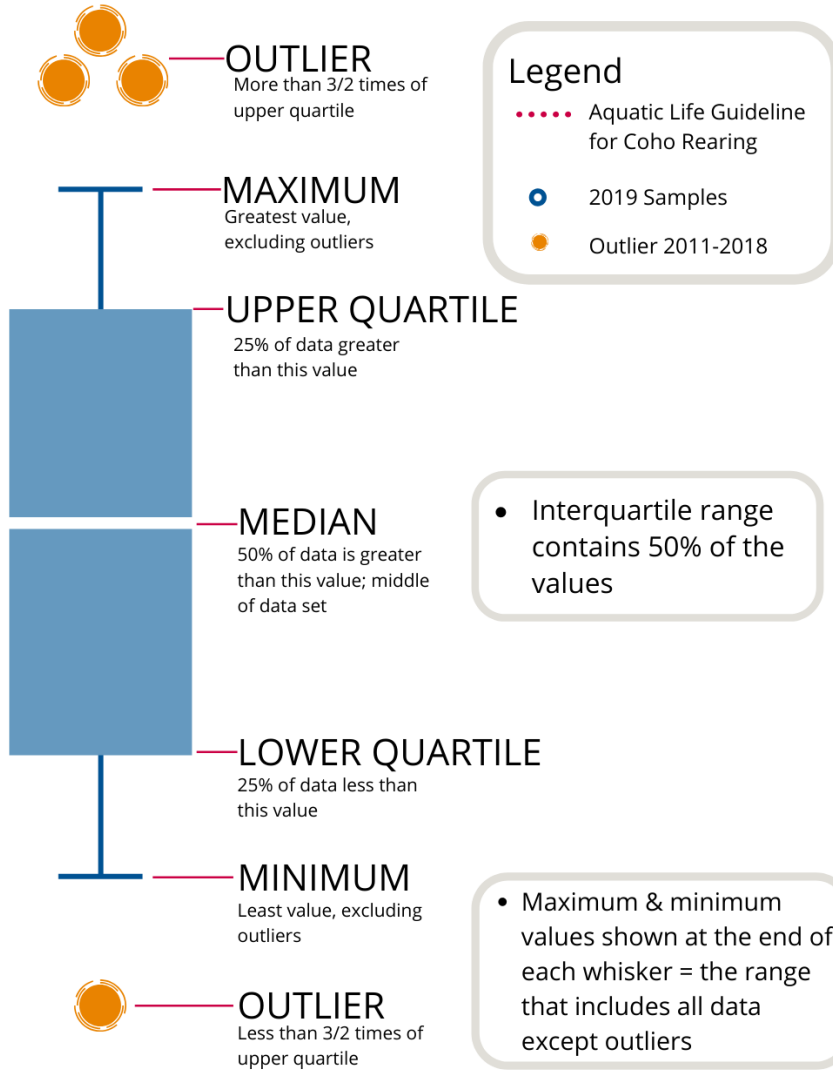
The table below shows the sites monitored by each of the streamkeeper organizations, as well as the number of years and which years a site was sampled. The number of years is important to keep in mind when interpreting the box plots as the plot for each site may contain a slightly different temporal range.

Group	EMS ID	Geographic Description	Years Sampled	Years Monitored
WxCS	E318155	South Wexford Ck at Community Park (Glenford Pl)	4	2019 - present
WxCS	E318152	Wexford Ck just d/s Douglas Ave	4	2019 - present
WxCS	E318172	Wexford Ck just u/s seniors complex	4	2019 - present
WxCS	E318153	Wexford Ck just d/s Tenth St	4	2019 - present
WxCS	E318154	Wexford Ck ~20m d/s confluence of N and main arm	4	2019 - present
NALT	E287699	Nanaimo River u/s Haslam Ck ~500m d/s hwy bridge	12	2011 - present
NALT	E215789	Nanaimo River at Cedar Rd bridge	9	2014 - present
NALT	E321395	Richards Creek 5m u/s Frames Rd	3	2020 - present
NALT	E290487	Beck Creek @ Cedar Rd	11	2012 - present
NALT	E310147	Holden Creek off East side of Lazo Lane	5.5	2017 – present*

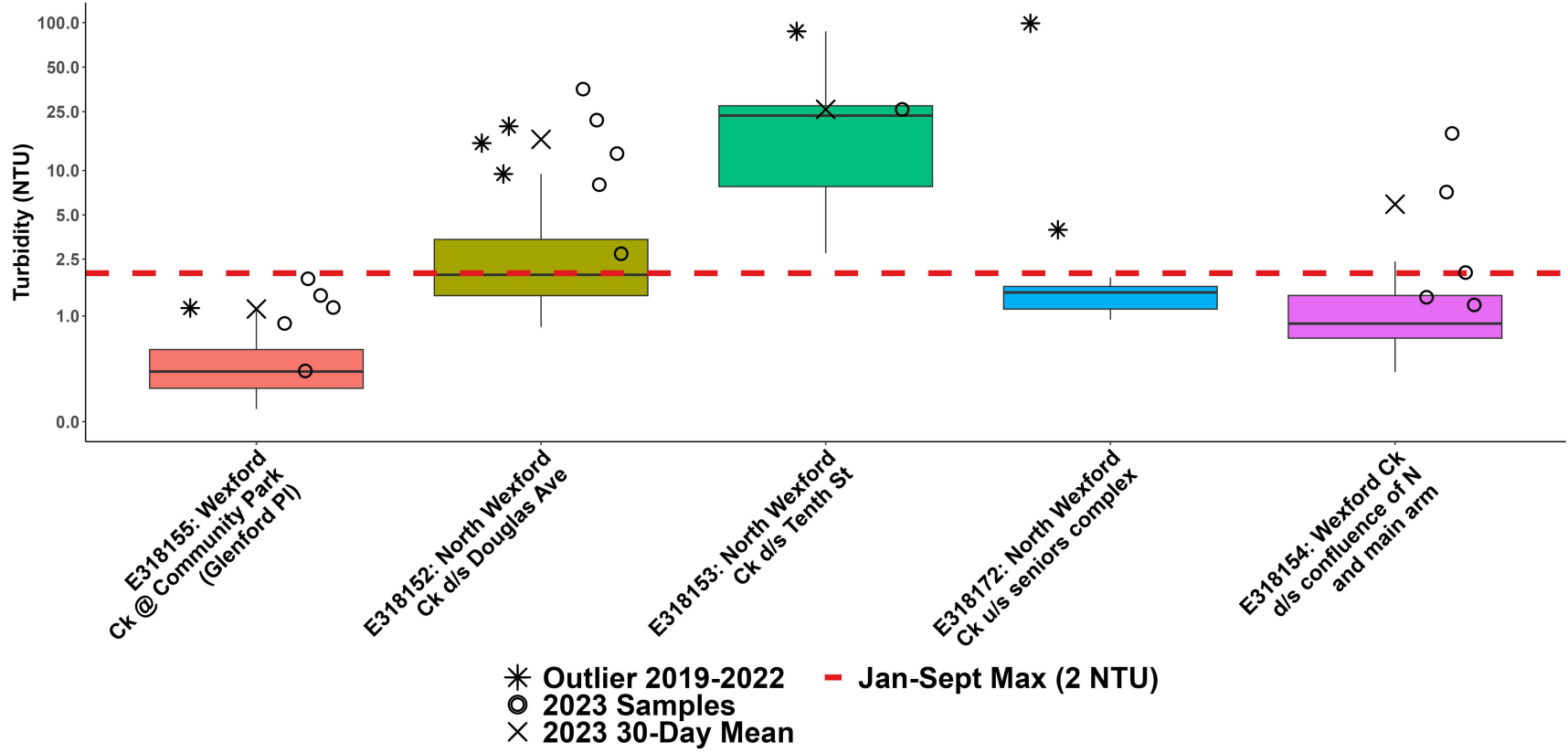
**In 2017, sampled in fall period only.*



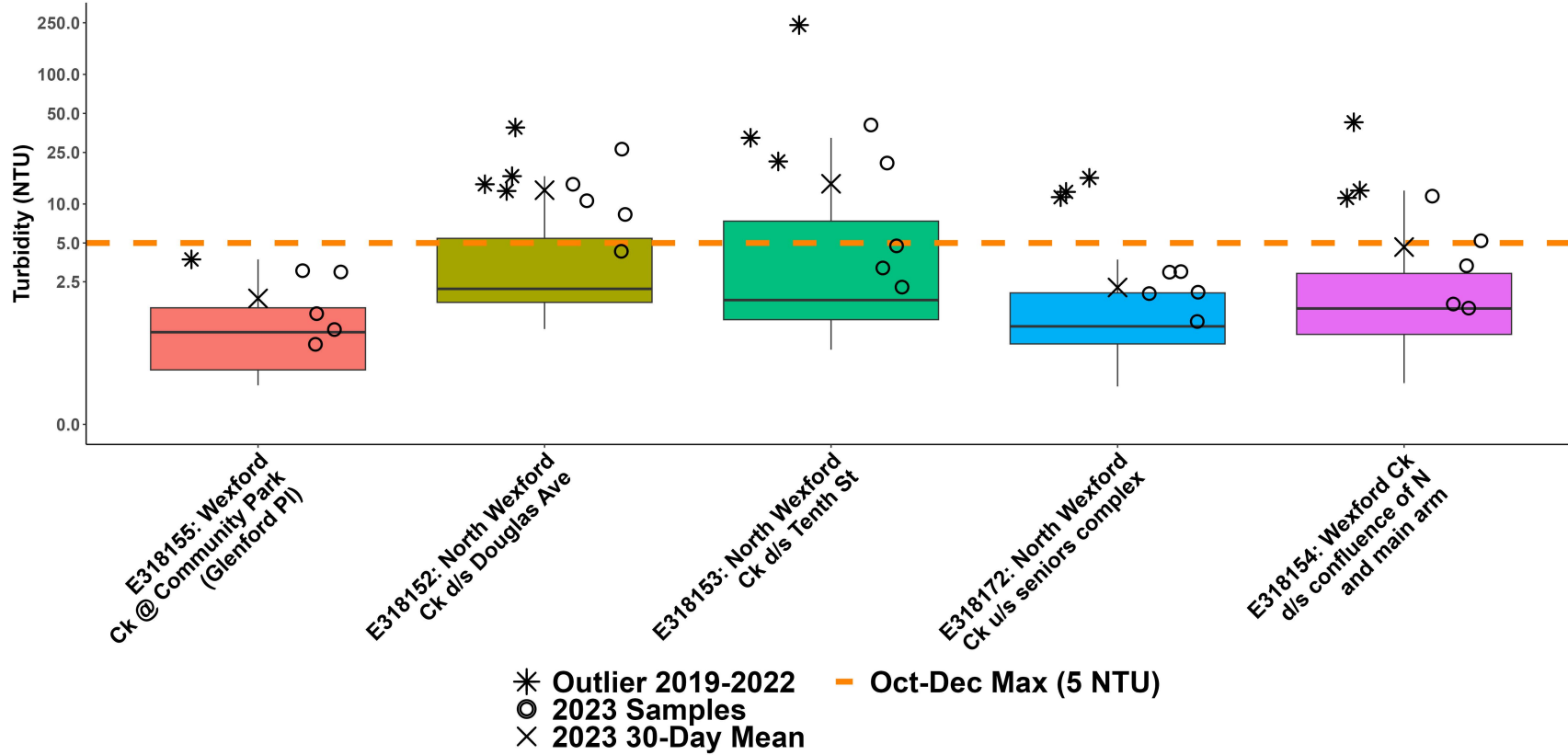
How to Interpret a Box Plot:



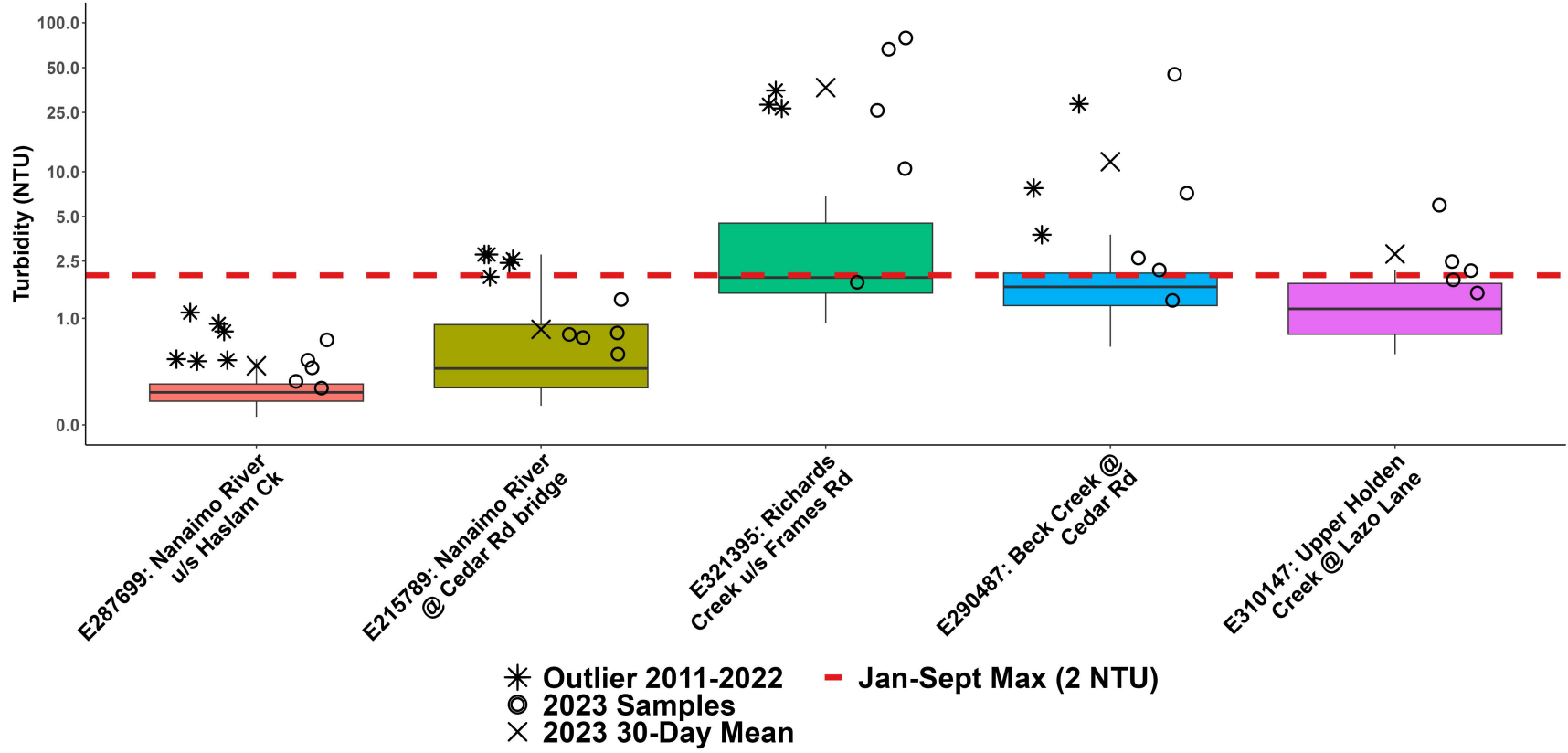
WR6a: Nanaimo River Summer Turbidity



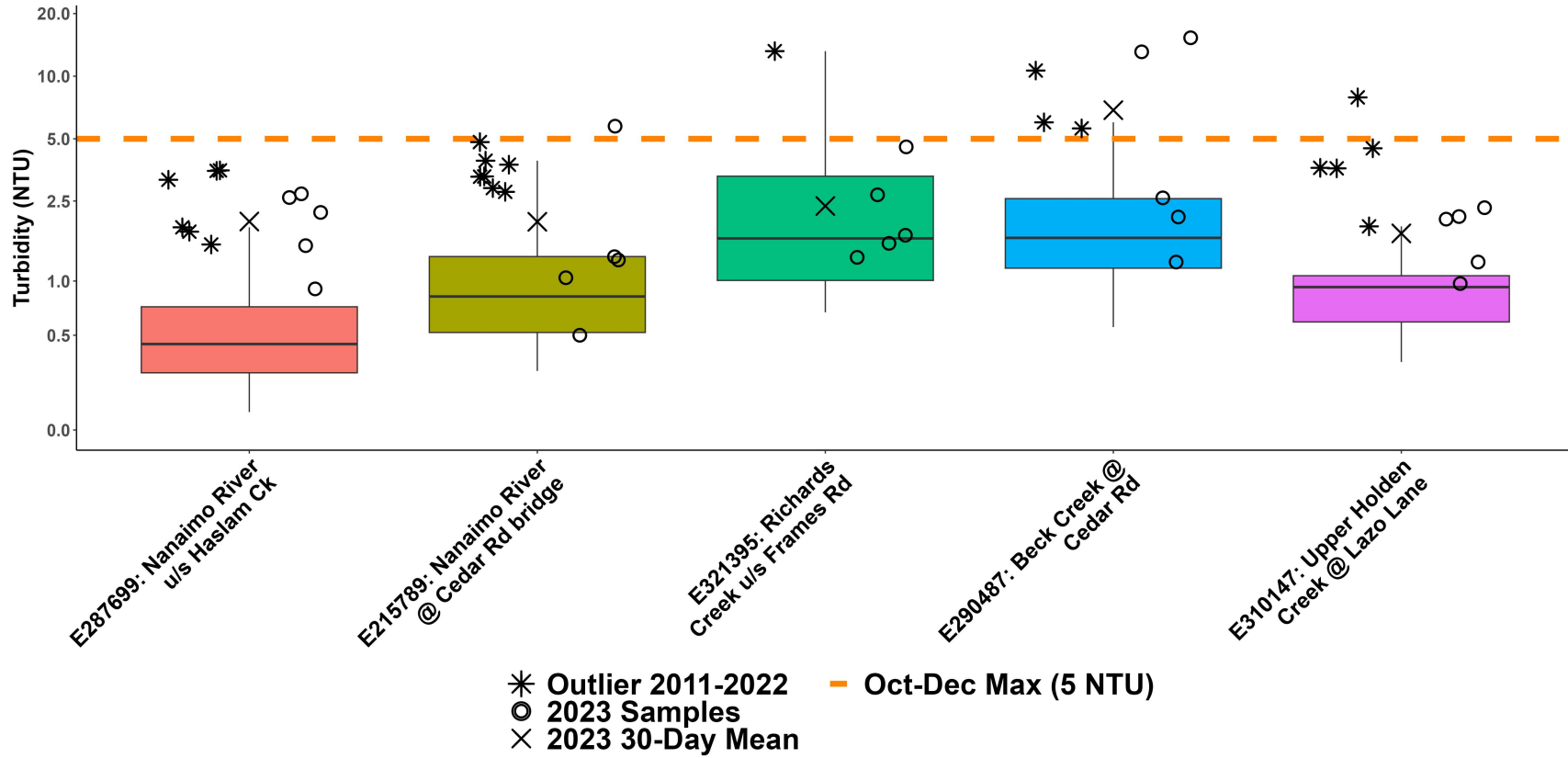
WR6a: Nanaimo River Fall Turbidity



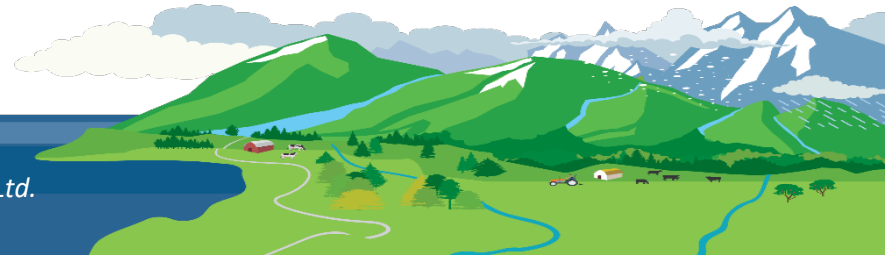
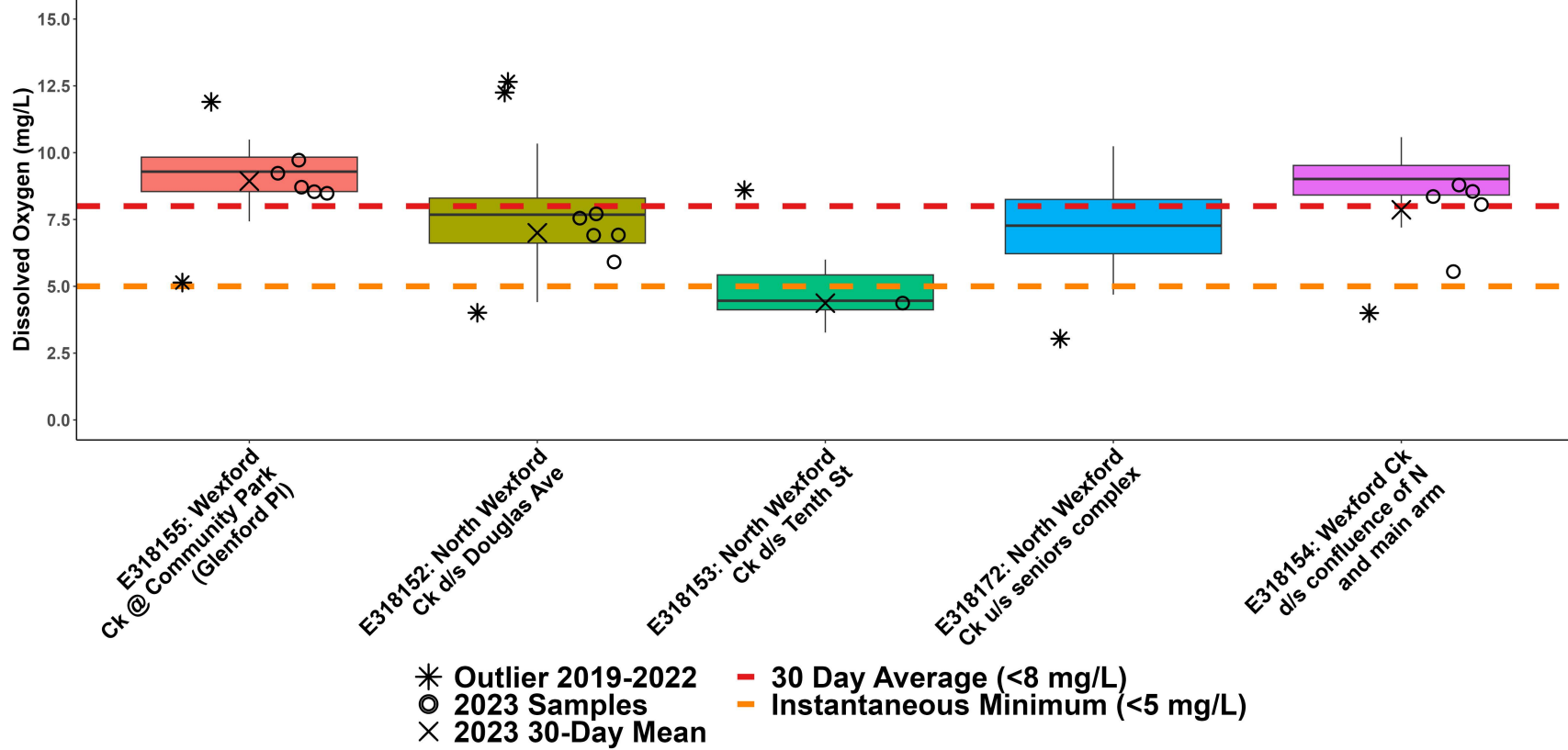
WR6b: Nanaimo River Summer Turbidity



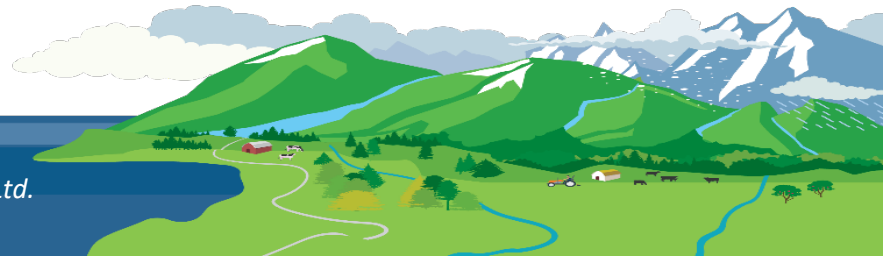
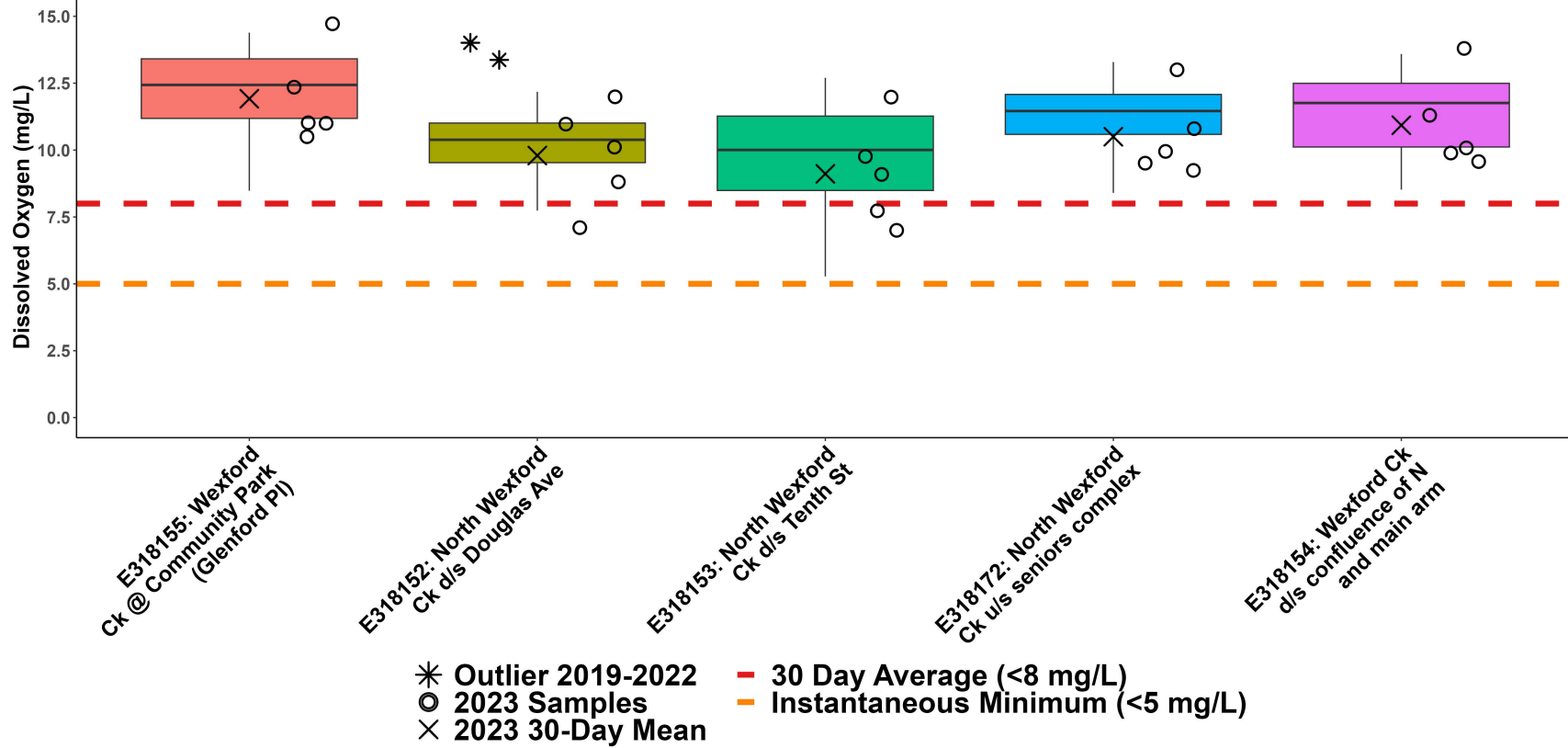
WR6b: Nanaimo River Fall Turbidity



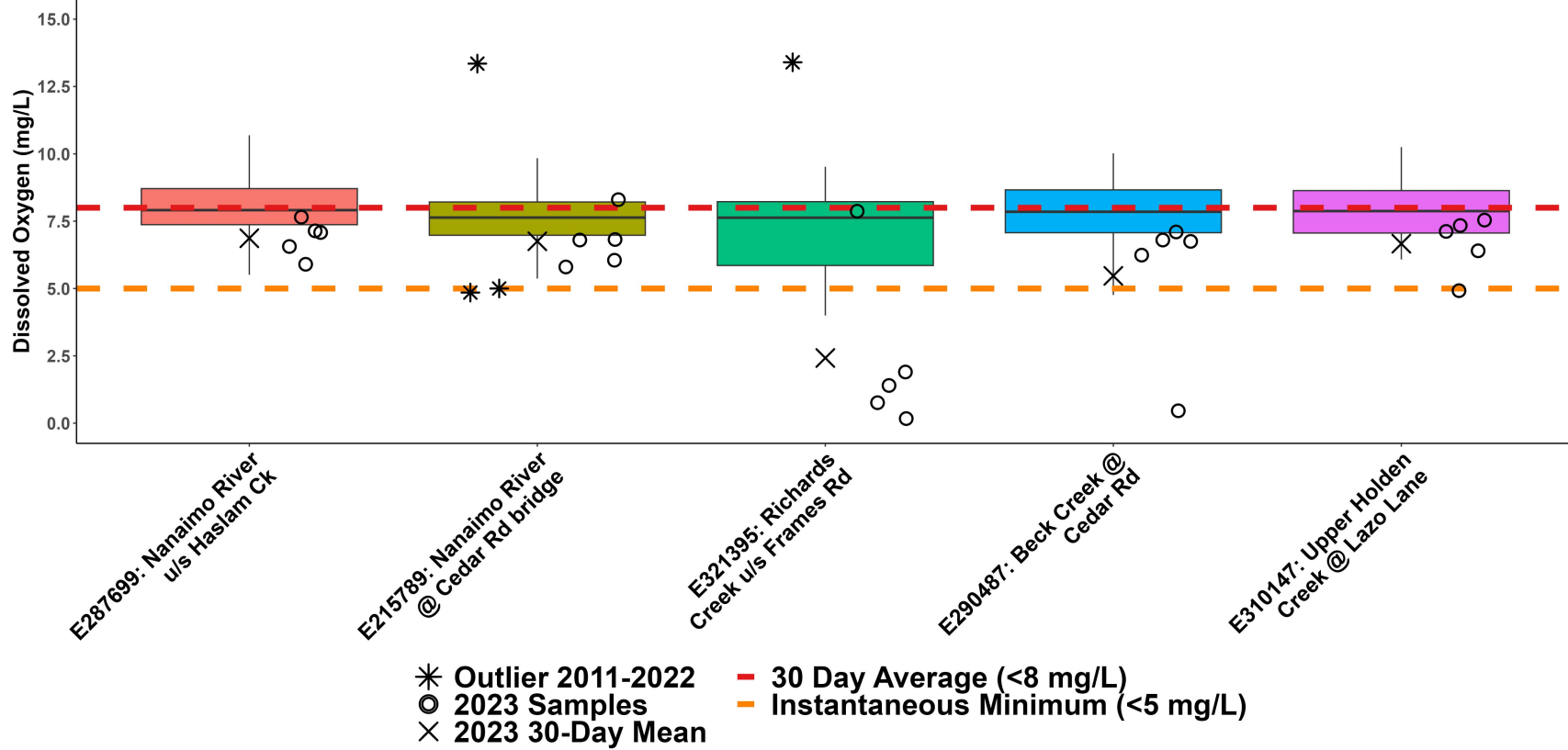
WR6a: Nanaimo River Summer Dissolved Oxygen



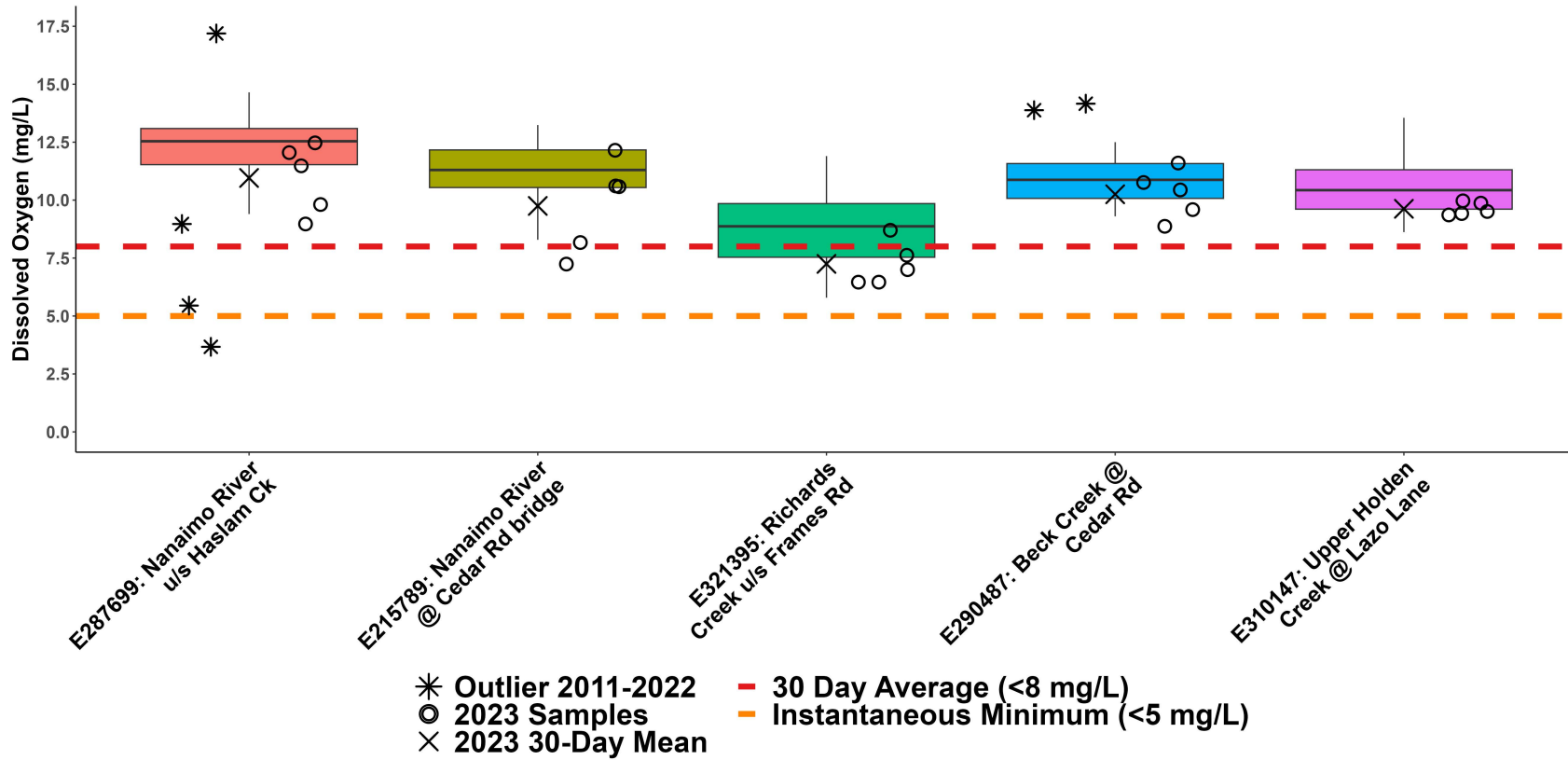
WR6a: Nanaimo River Fall Dissolved Oxygen



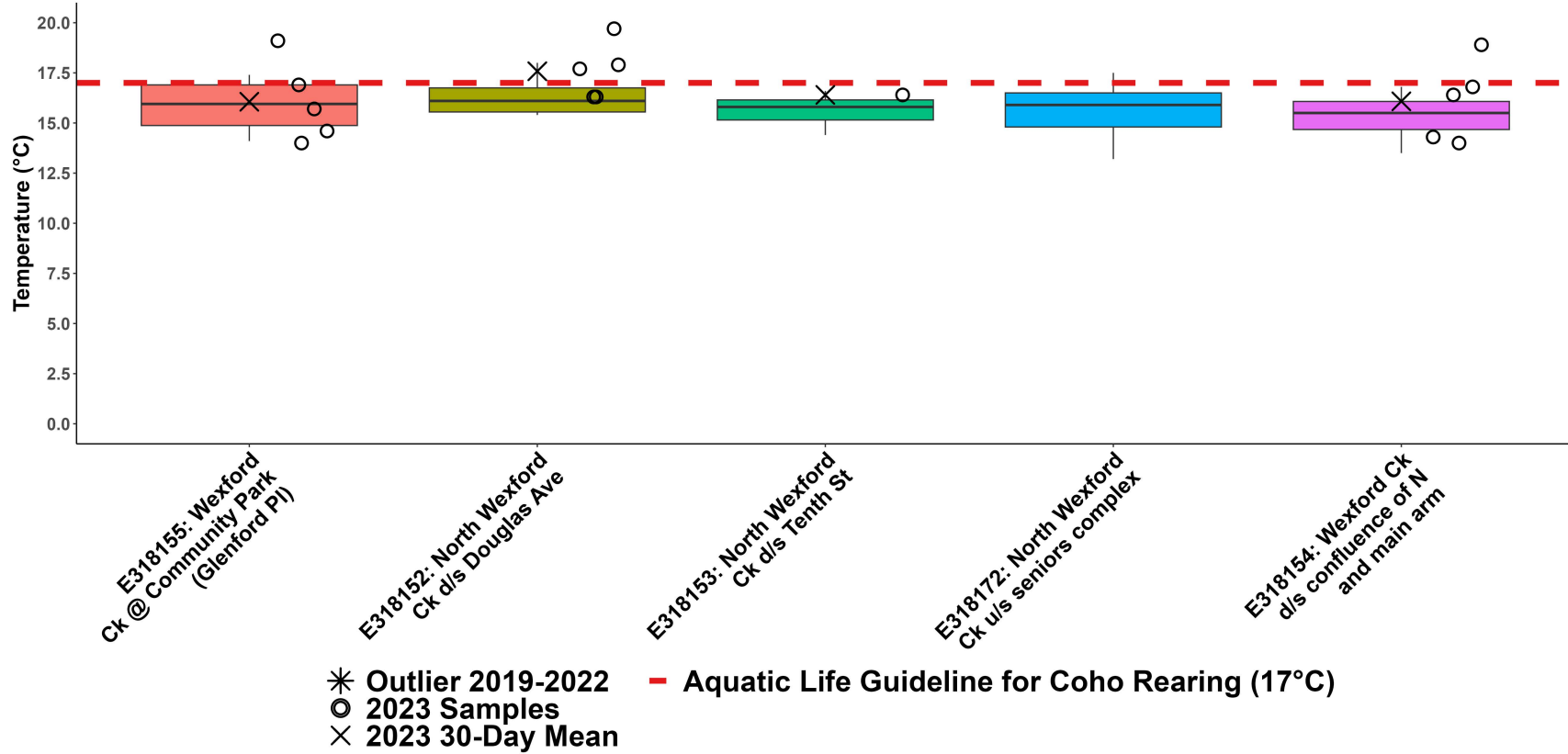
WR6b: Nanaimo River Summer Dissolved Oxygen



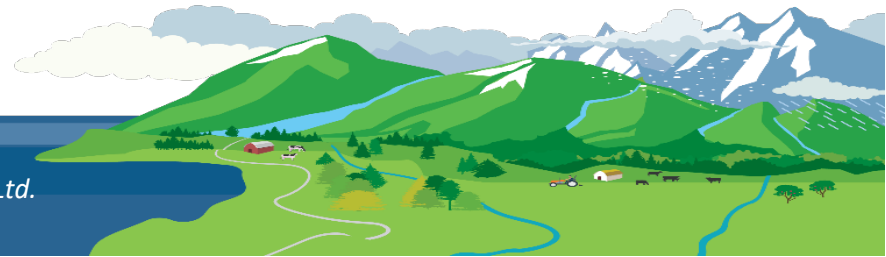
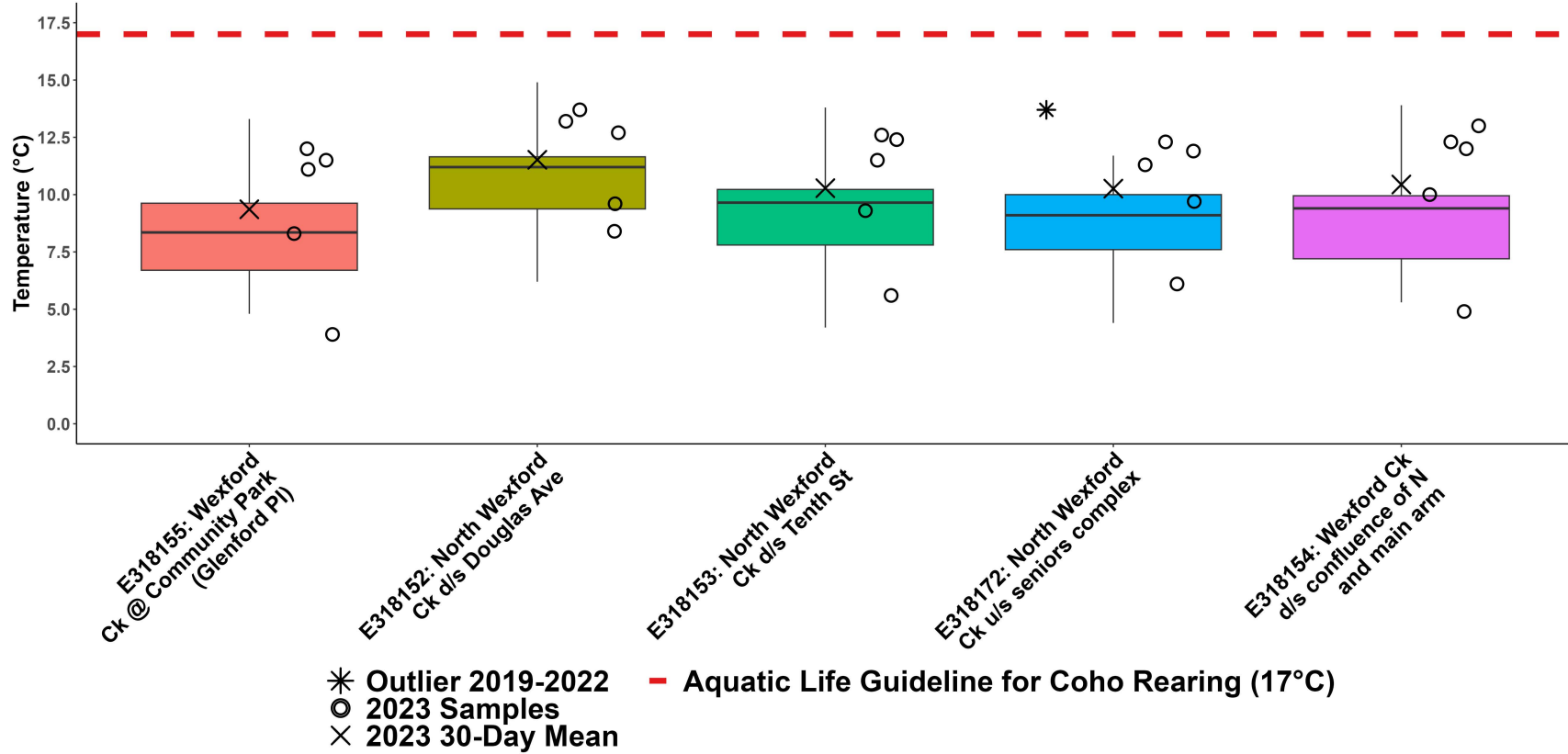
WR6b: Nanaimo River Fall Dissolved Oxygen



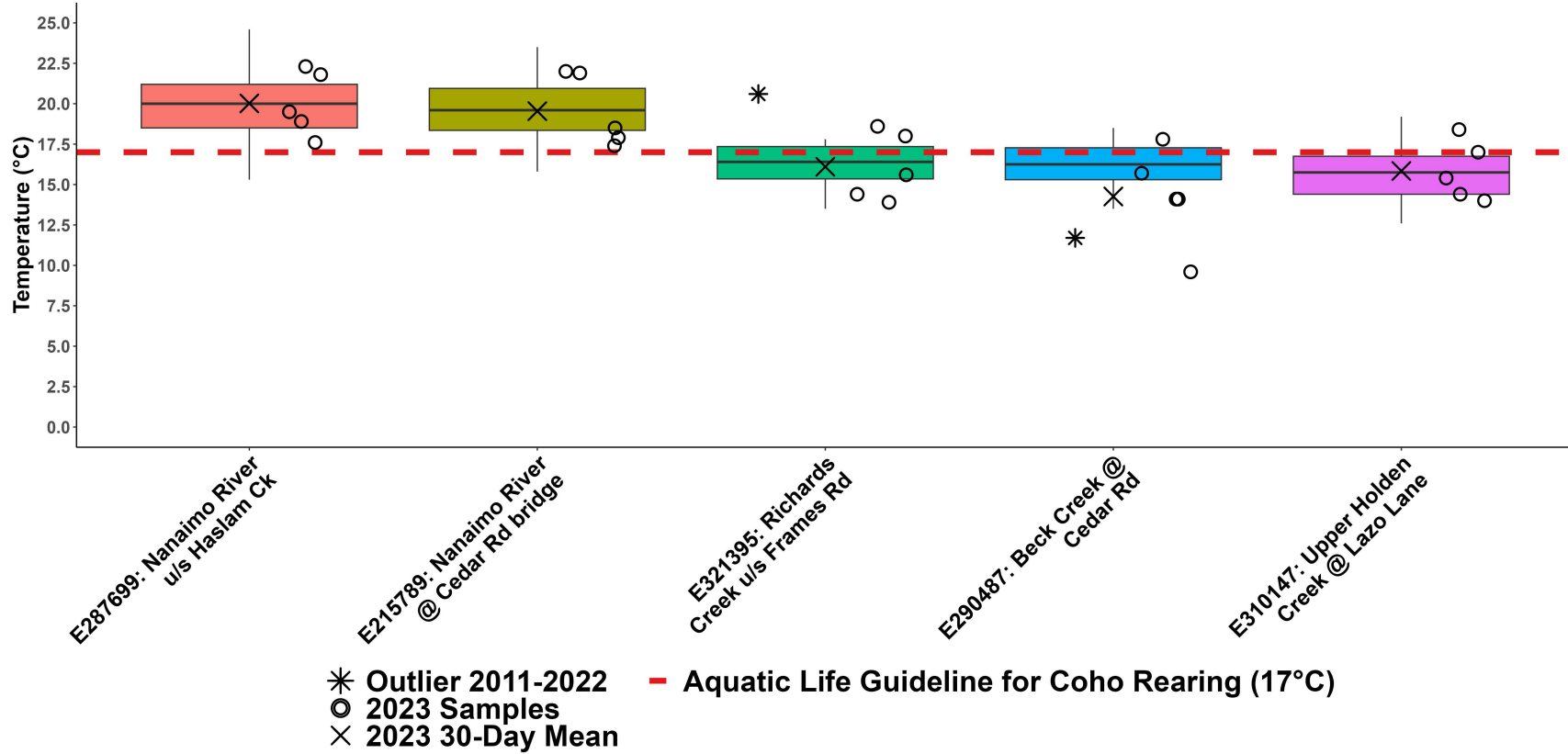
WR6a: Nanaimo River Summer Temperature



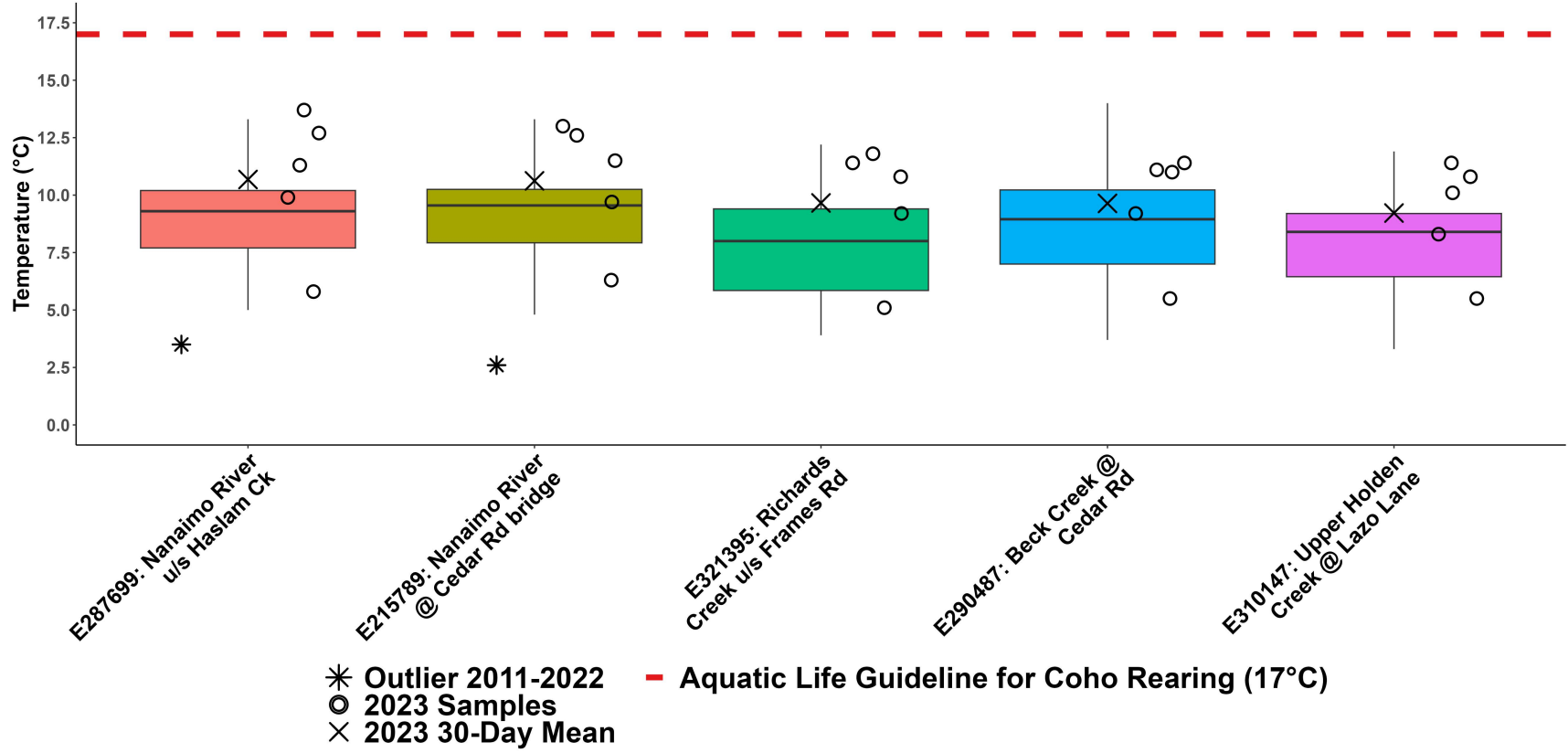
WR6a: Nanaimo River Fall Temperature



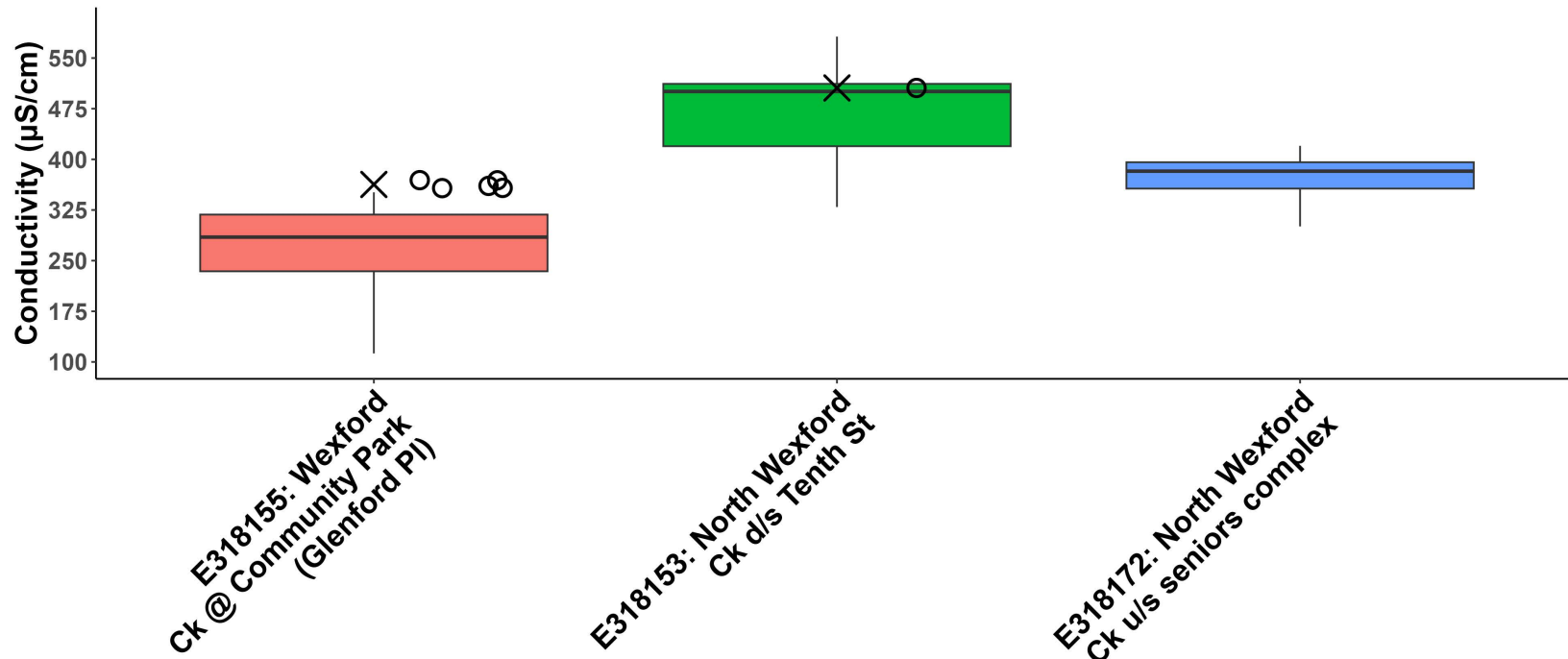
WR6b: Nanaimo River Summer Temperature



WR6b: Nanaimo River Fall Temperature



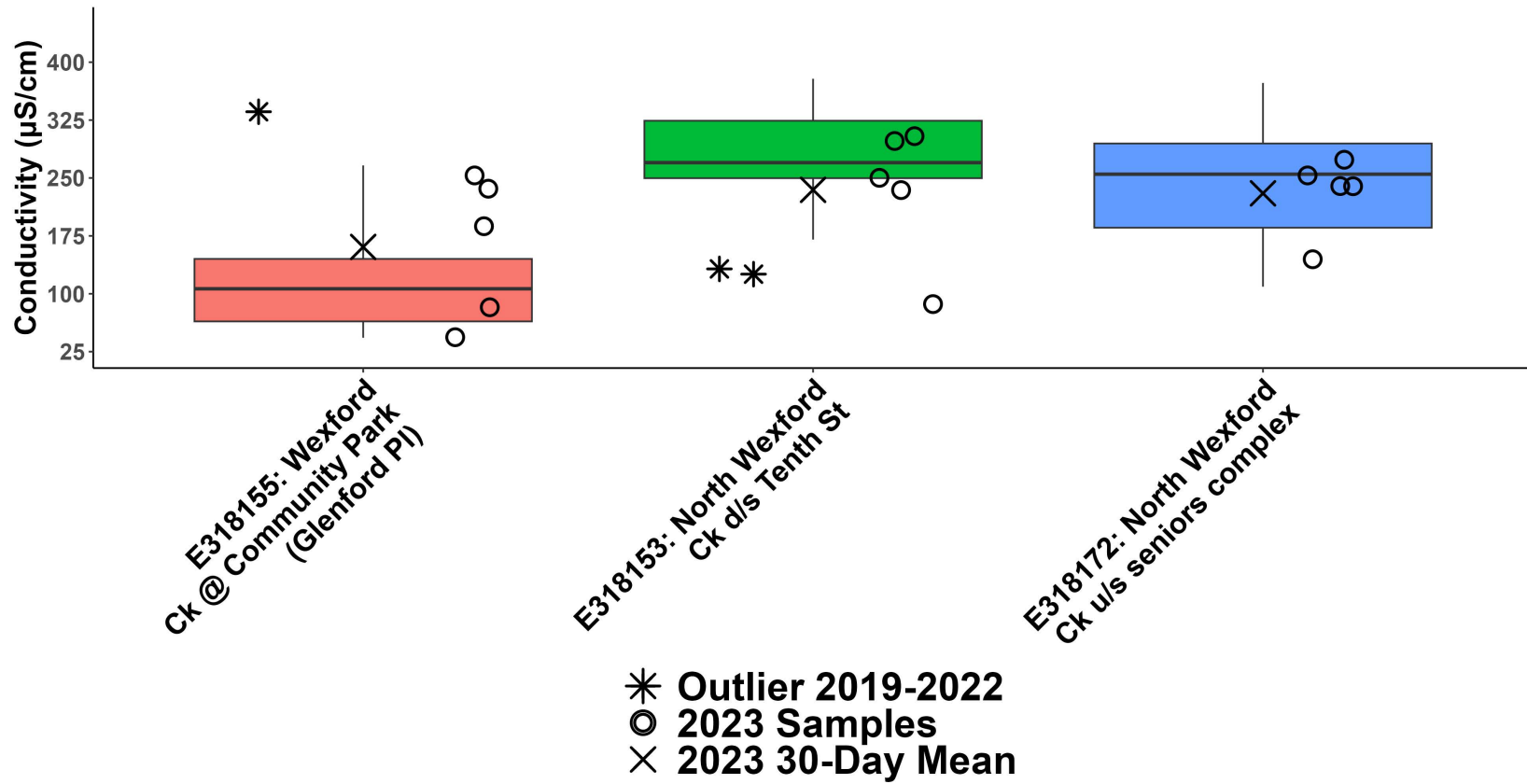
WR6a: Nanaimo River Summer Conductivity



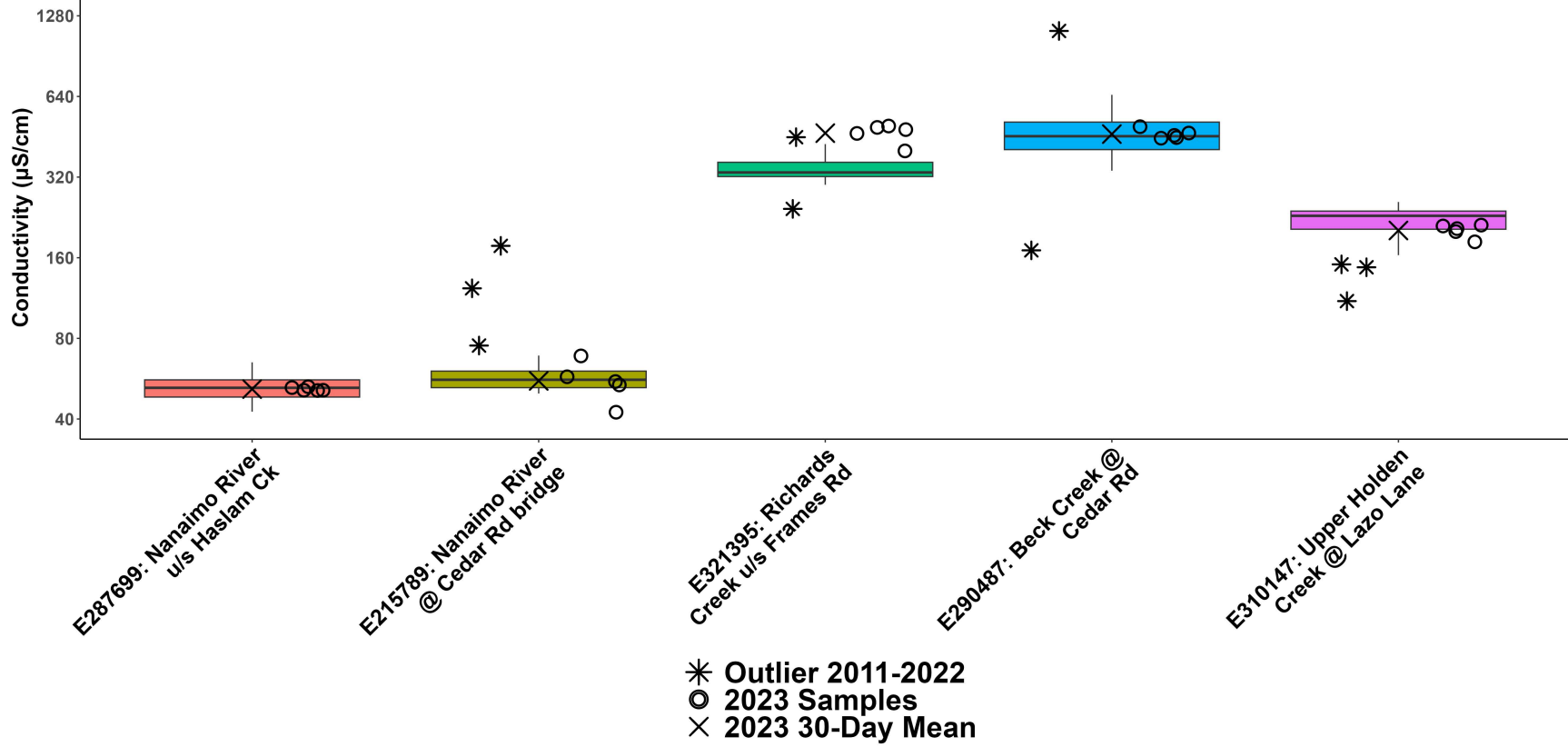
* Outlier 2019-2022
 ○ 2023 Samples
 × 2023 30-Day Mean



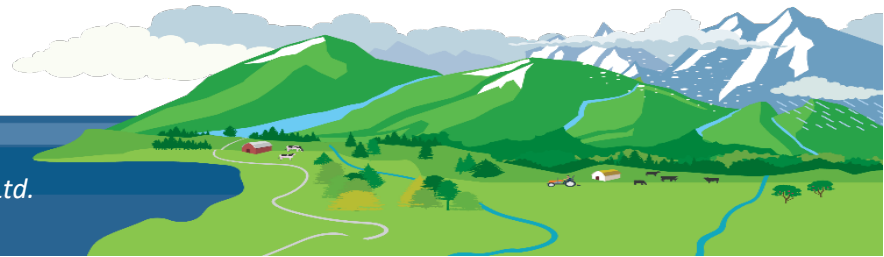
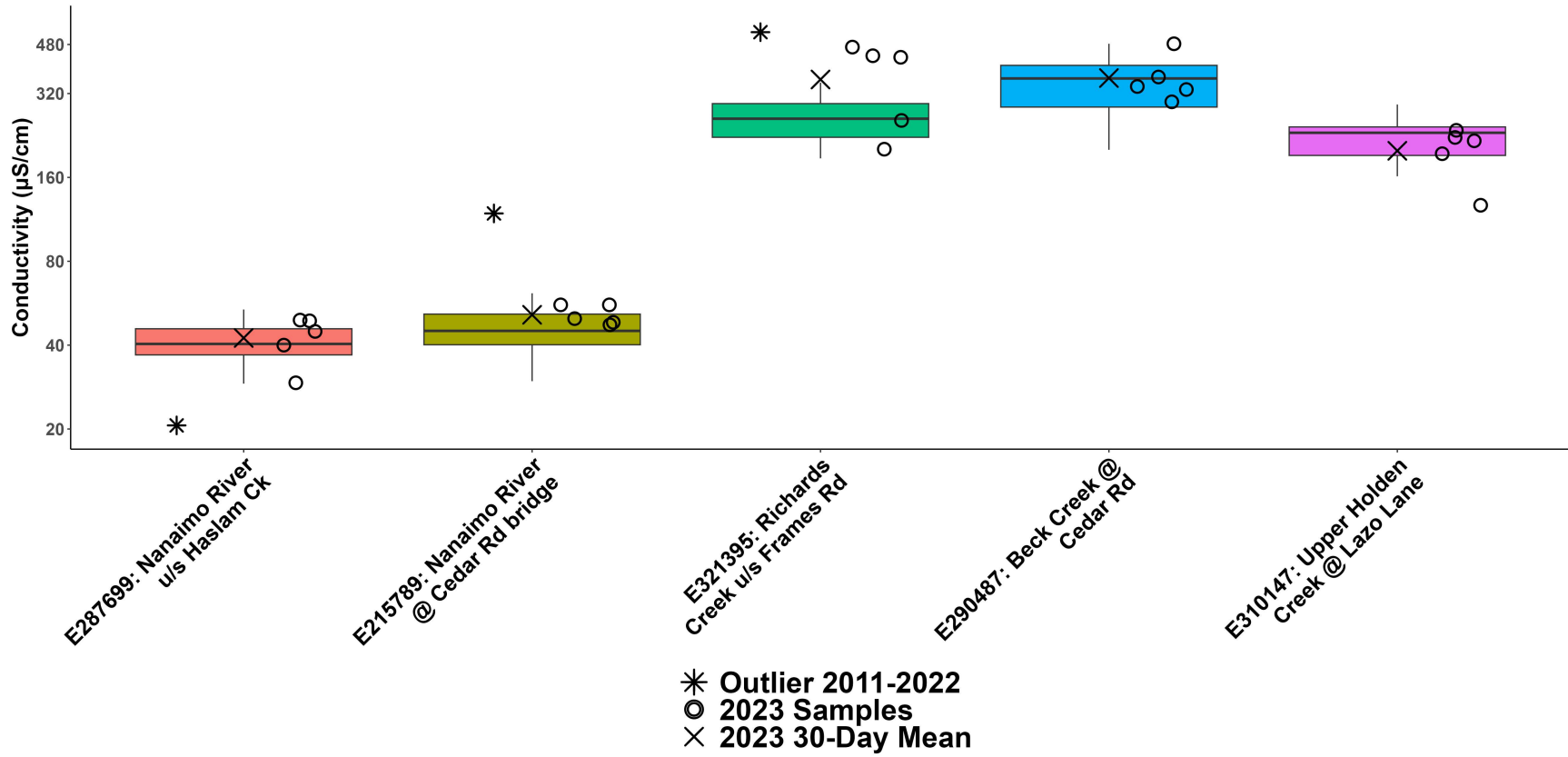
WR6a: Nanaimo River Fall Conductivity

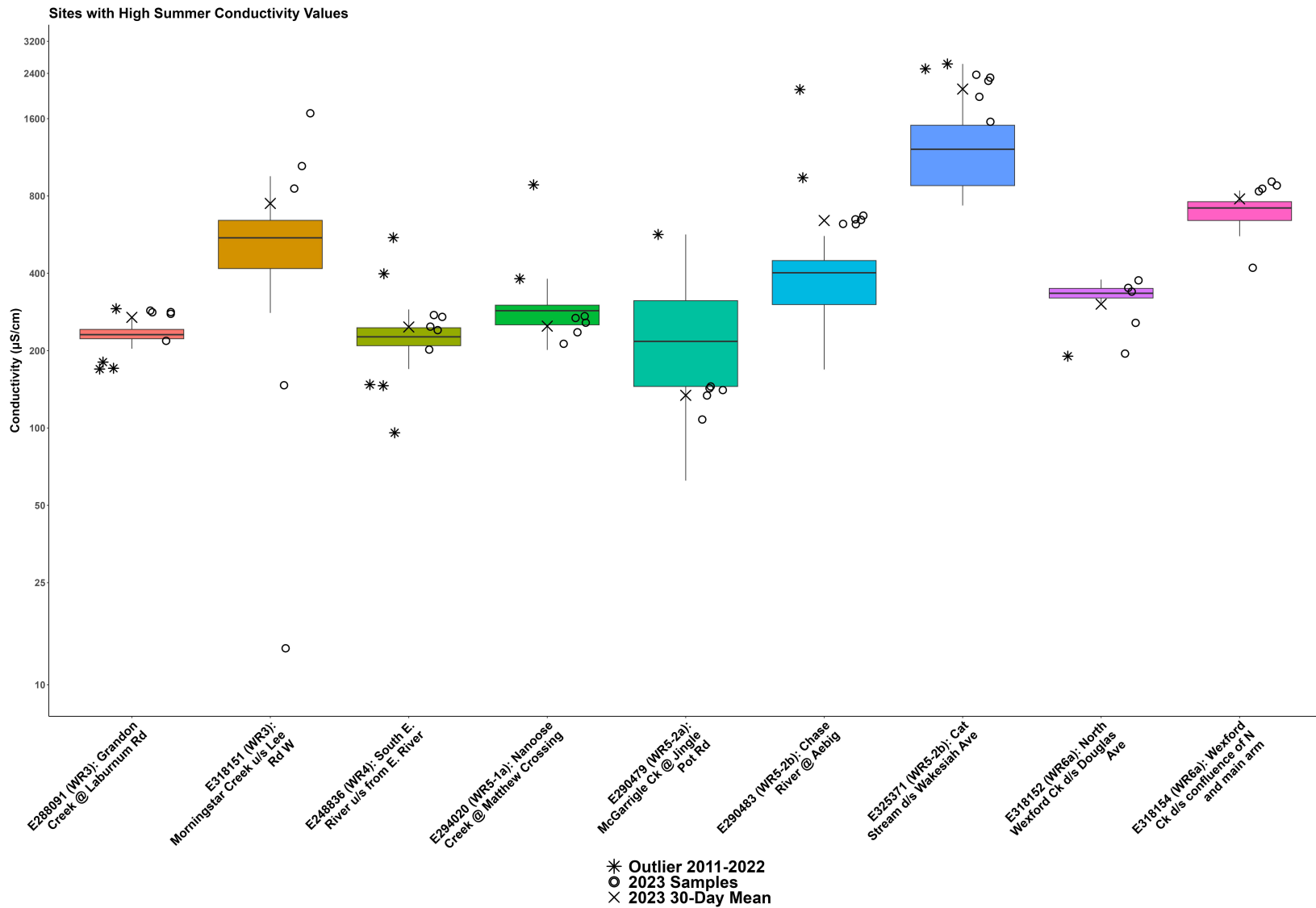


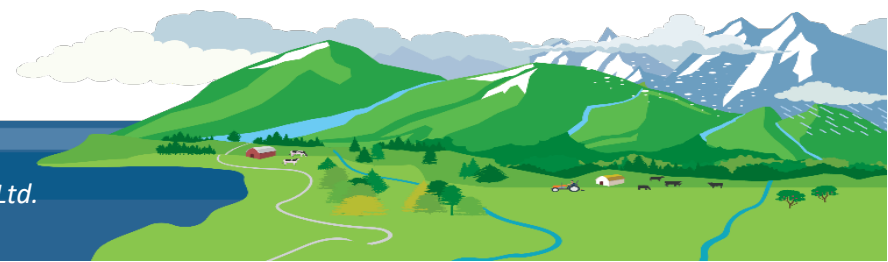
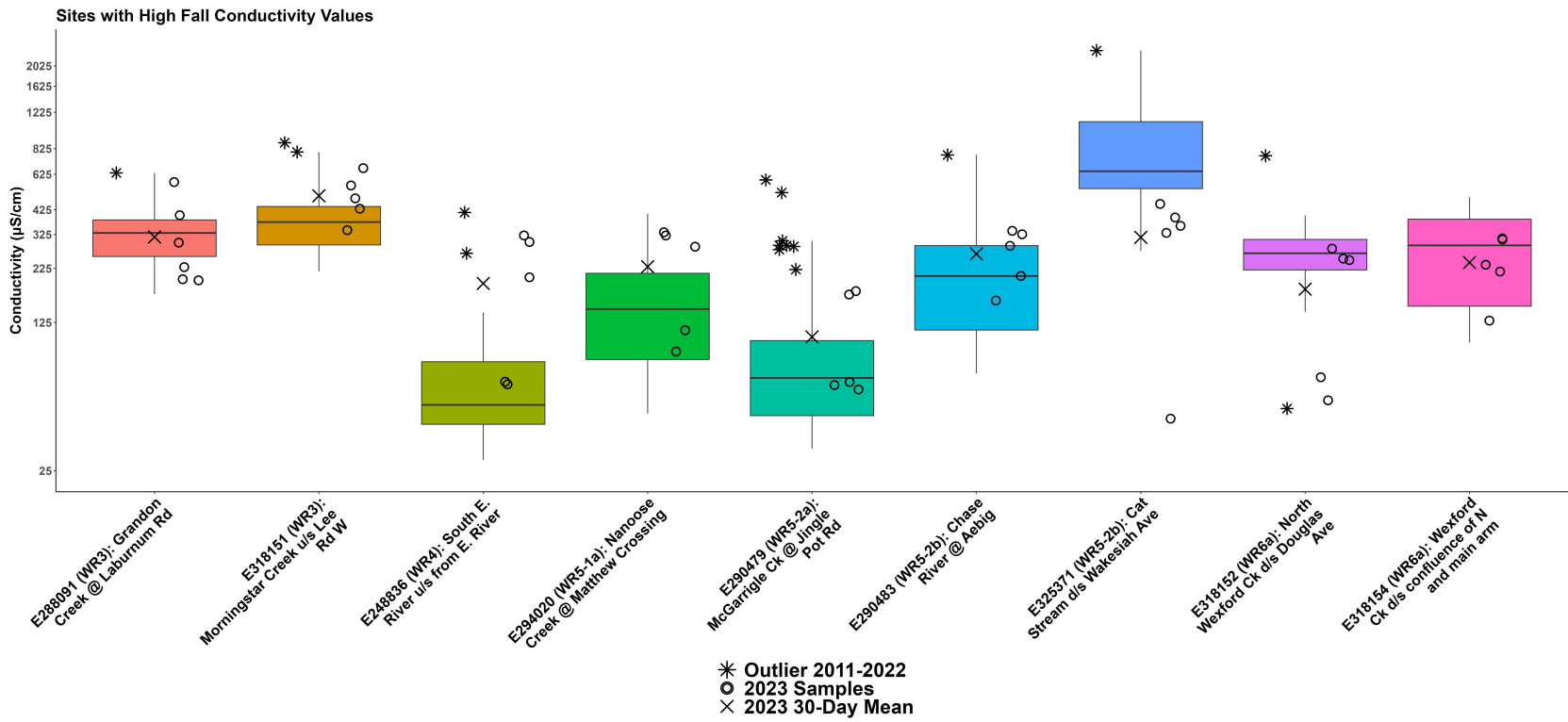
WR6b: Nanaimo River Summer Conductivity

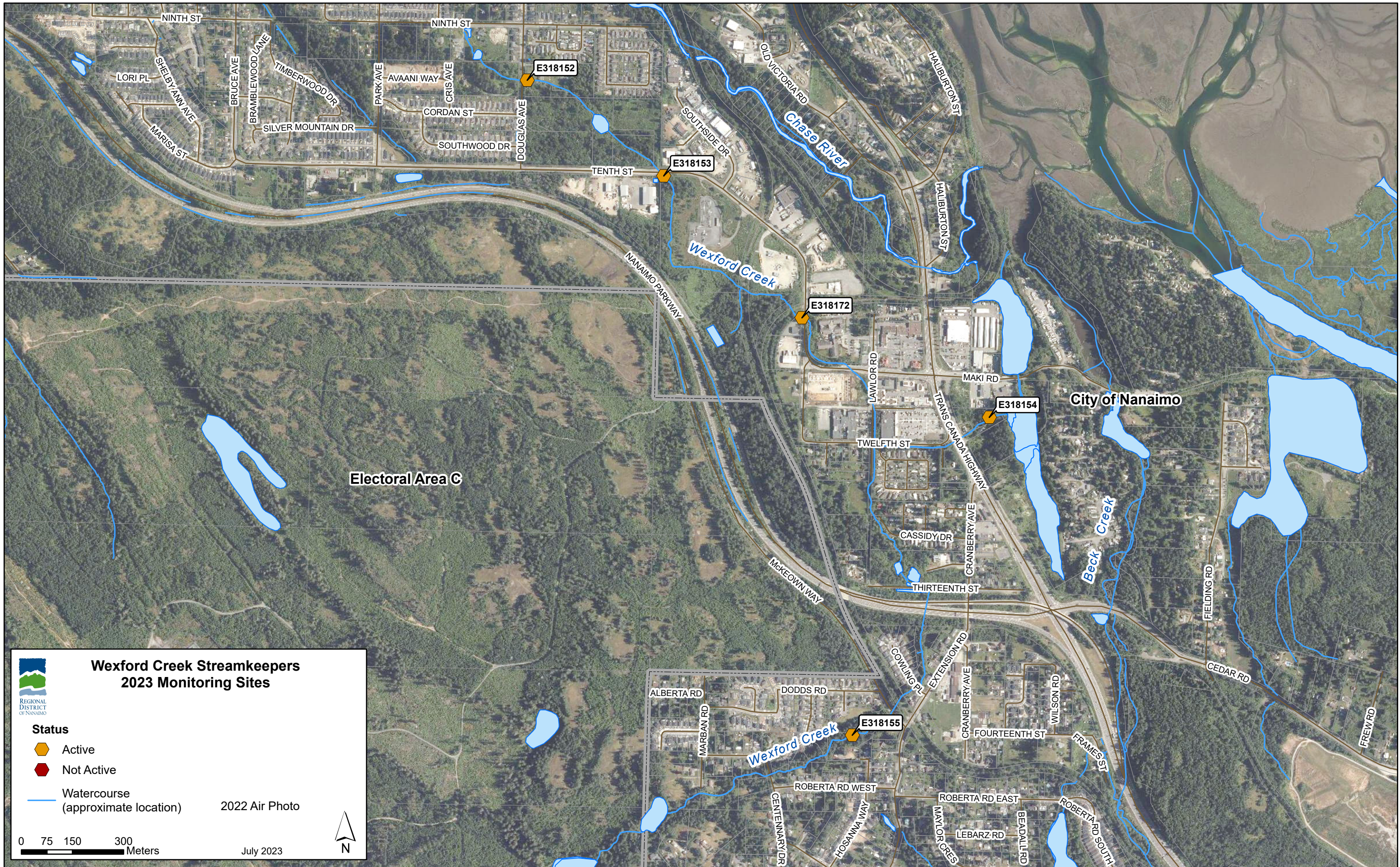


WR6b: Nanaimo River Fall Conductivity









**Wexford Creek Streamkeepers
2023 Monitoring Sites**

REGIONAL DISTRICT OF NANAIMO

Status

- Active
- Not Active

Watercourse
(approximate location)

2022 Air Photo

0 75 150 300
Meters

July 2023

N



**Nanaimo & Area Land Trust
2023 Monitoring Sites**

REGIONAL DISTRICT OF NANAIMO

Status	Community Park
Active	Regional Park
Not Active	Provincial Park
Watercourse (approximate location)	2022 Air Photo

0 300 600 1,200 Meters

July 2023

N