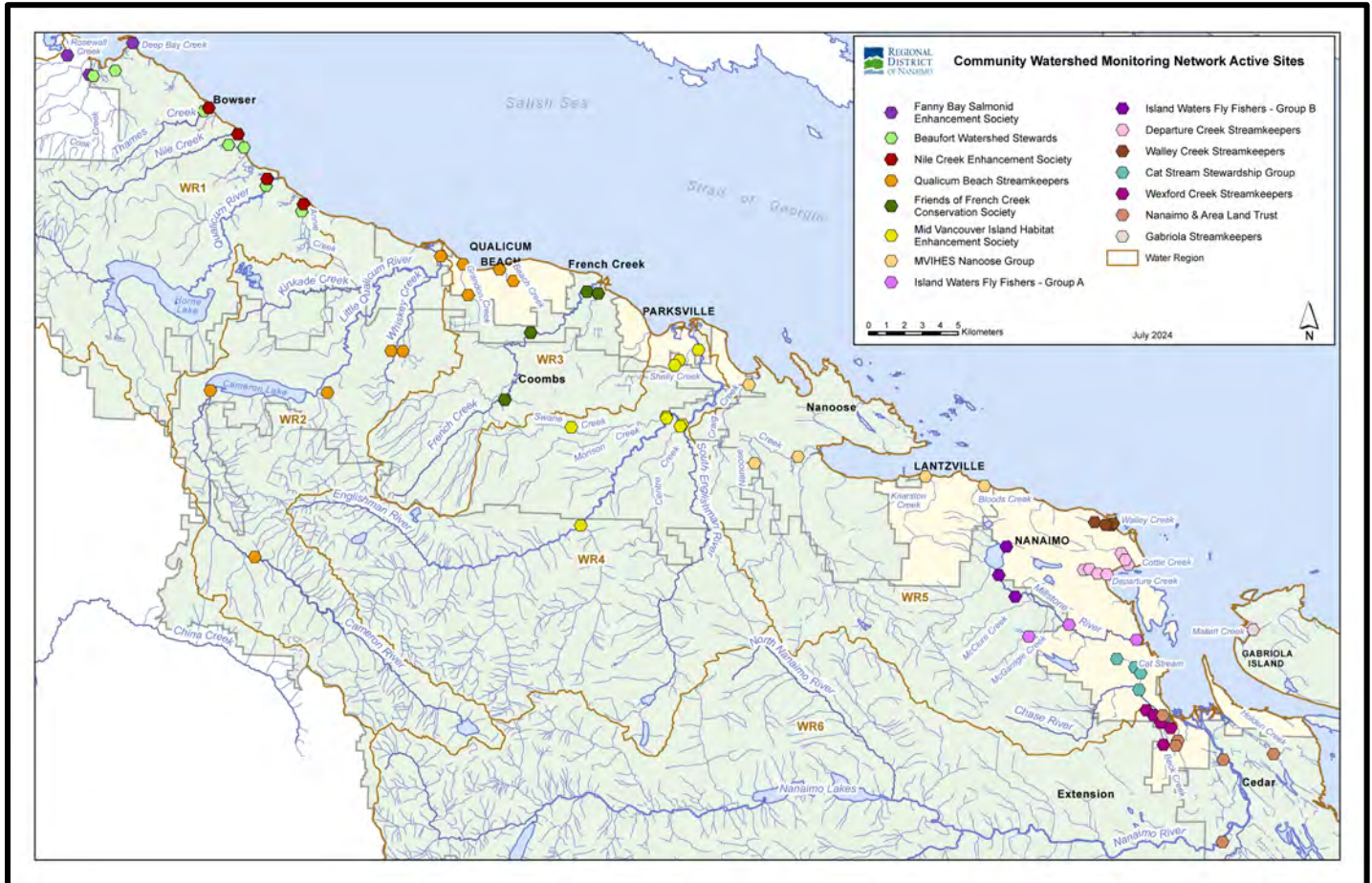


Community Watershed Monitoring Network 2024 Results by Water Region



Included in Water Region (WR) 5-1 package:

1. CWMN WR5 sample sites
2. How to interpret a box plot
3. Box Plot Comparison – 2024 data to previous years: *displayed by parameter (Turbidity, Dissolved Oxygen, Temperature, Conductivity) & sample period (summer, fall)*
4. Mid Vancouver Island Habitat Enhancement Society (MVIHES) group map
5. Walley Creek Streamkeepers (WCS) map
6. Departure Creek Streamkeepers (DCS) map



Water Region 5-1
sampled by:
**Mid Vancouver Island Habitat
Enhancement Society
(MVIHES)**
&
**Walley Creek Streamkeepers
(WCS)**
&
**Departure Creek Streamkeepers
(DCS)**



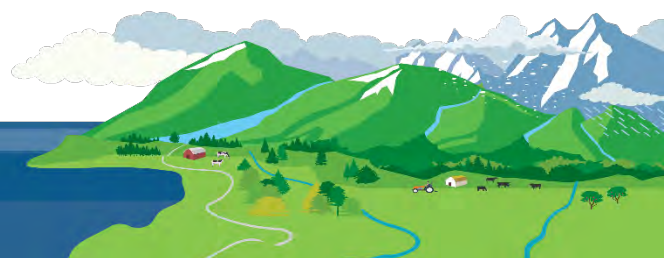
WR5-1 CWMN Sample Sites:

The table below shows the sites monitored by each of the streamkeeper organizations, as well as the number of years and which years a site was sampled. The number of years is important to keep in mind when interpreting the box plots as the plot for each site may contain a slightly different temporal range.

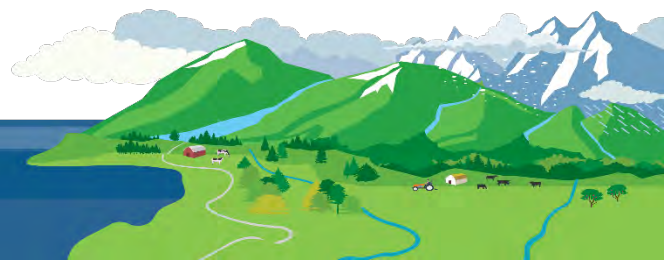
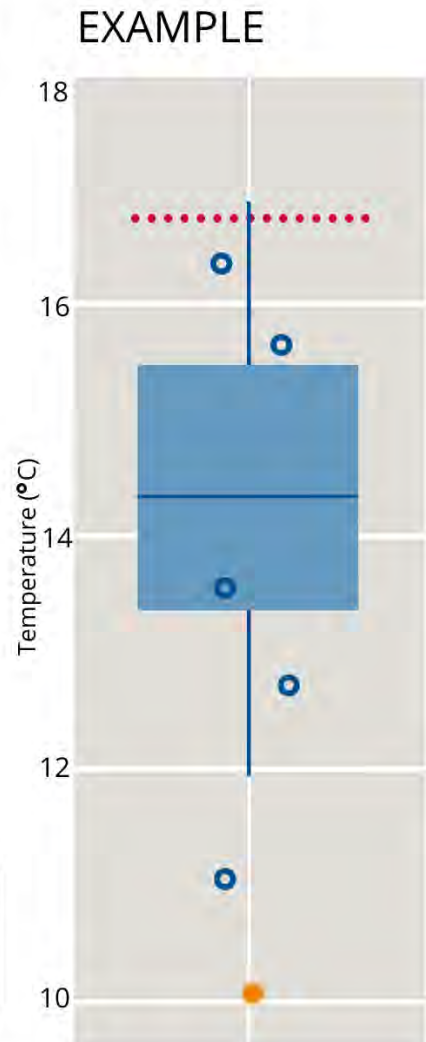
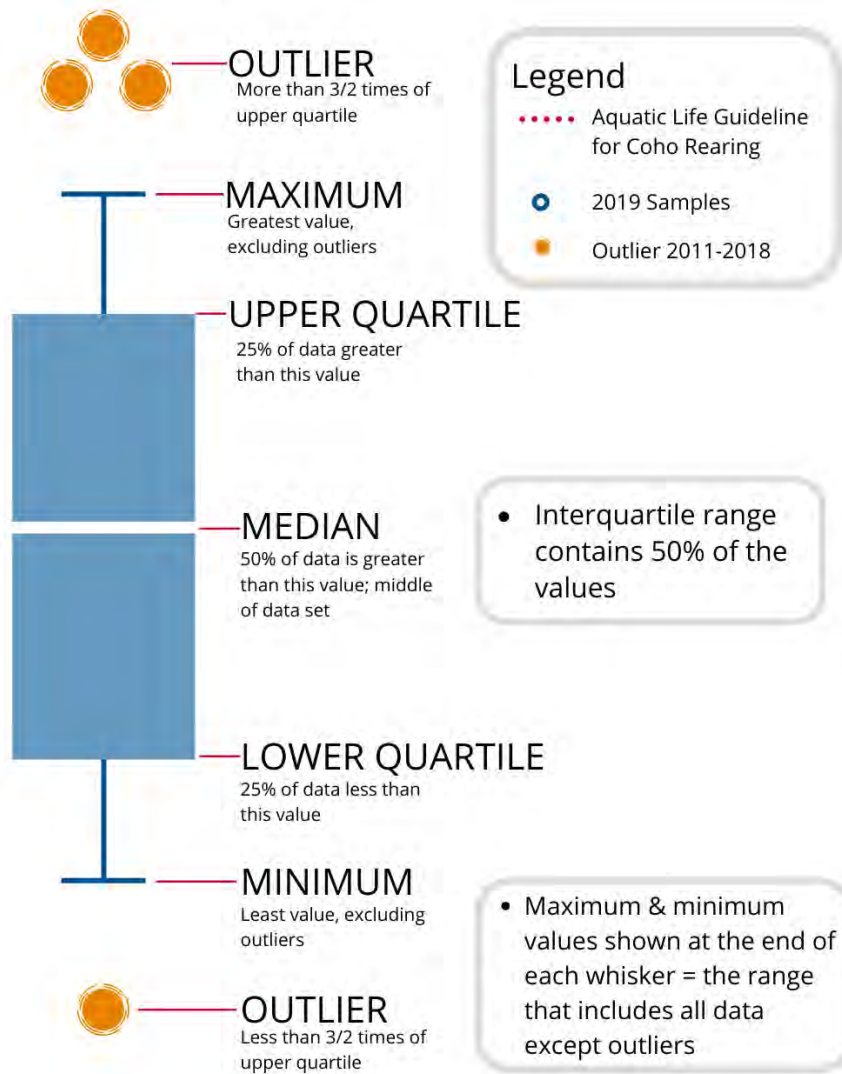
Group	EMS ID	Geographic Description	Years Sampled	Years Monitored
MVIHES	E294010	Bloods Creek just u/s Dickenson Rd	7.5	2017 – present*
MVIHES	E294013	Knarston Ck just u/s Lantzville Rd	7.5	2017 – present*
MVIHES	E294017	Craig Creek just u/s Northwest Bay Rd	3	2022 – present
MVIHES	E294019	Nanoose Creek @ Nanoose Campground	3	2022 – present
MVIHES	E294020	Nanoose Creek @ Matthew Crossing	3	2022 – present
DCS	E290469	Departure Ck @ Neyland Rd (Stn1)	13	2012 – present
DCS	E290470	Josephs Ck (Dept Ck <u>trib</u>) off Newton (<u>Stn 2</u>)	13	2012 – present
DCS	E290471	Departure Ck in Woodstream Park (Stn 3)	13	2012 – present
DCS	E290472	Departure Ck @ outlet (Stn 4)	13	2012 – present
DCS	E290473	Cottle Creek @ Nottingham	13	2012 – present
DCS	E309186	Cottle Creek d/s of Hammond Bay Road	8	2017 – present
DCS	E290475	Cottle Creek @ Stephenson Pt Rd	13	2012 – present
WCS	E306256	Walley Ck d/s Hammond Bay	9	2016 – present
WCS	E306257	Walley Ck @ Morningside Dr	9	2016 – present
WCS	E306434	Walley Creek 20m u/s beach	9	2016 – present
WCS	E318233	Walley Ck 100 m d/s McGuffie Rd	5	2019 – present [^]

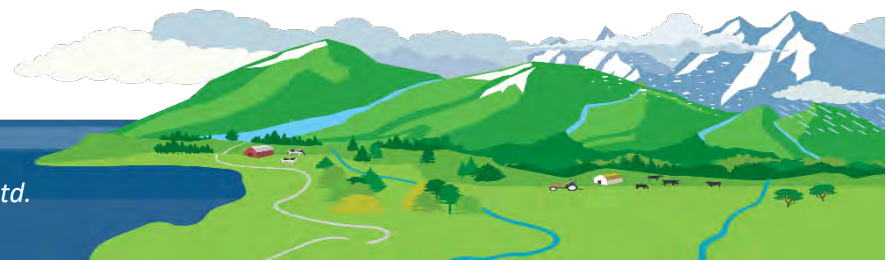
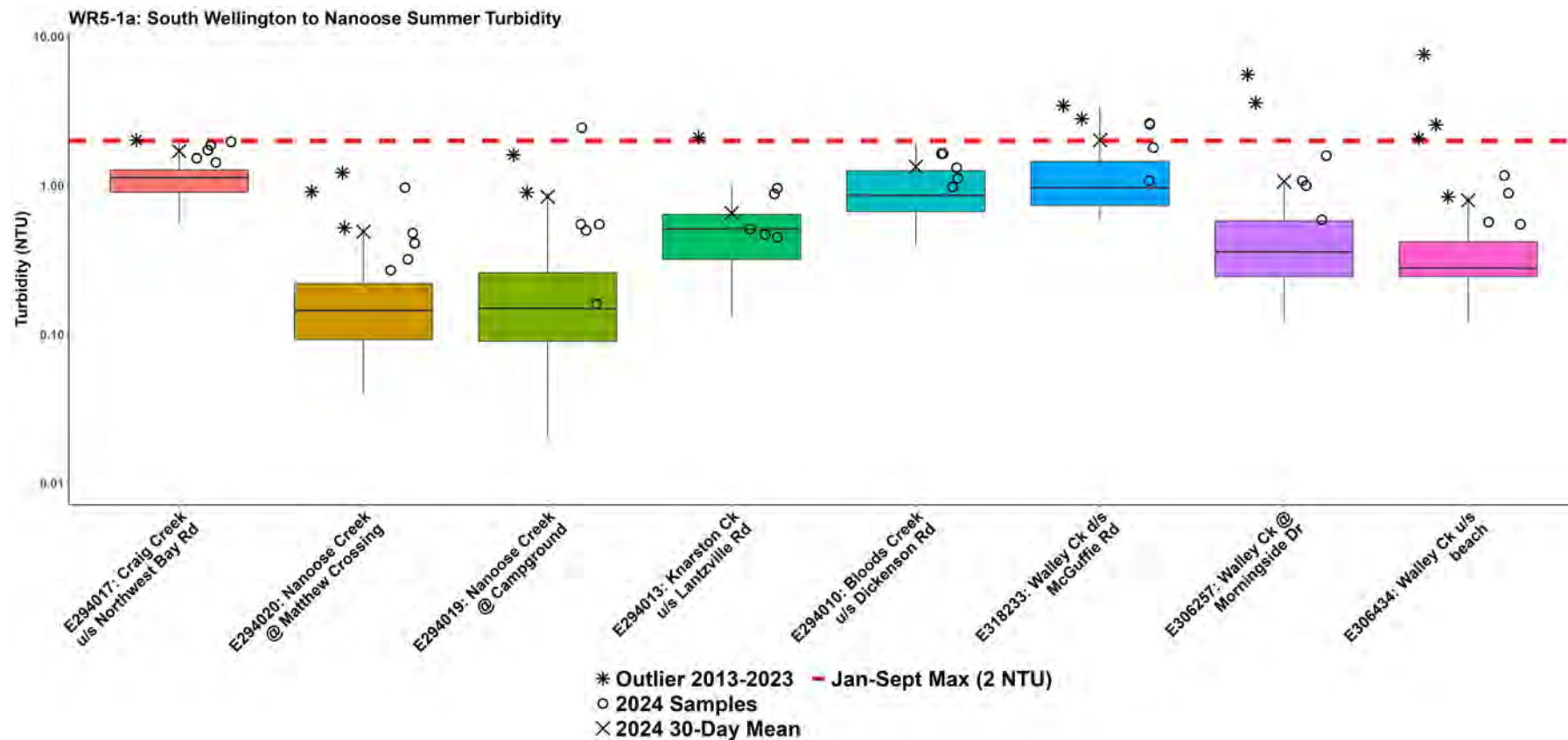
*Sampled in 2017 fall period only.

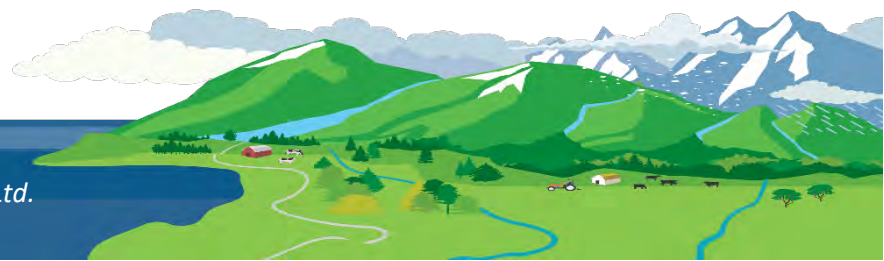
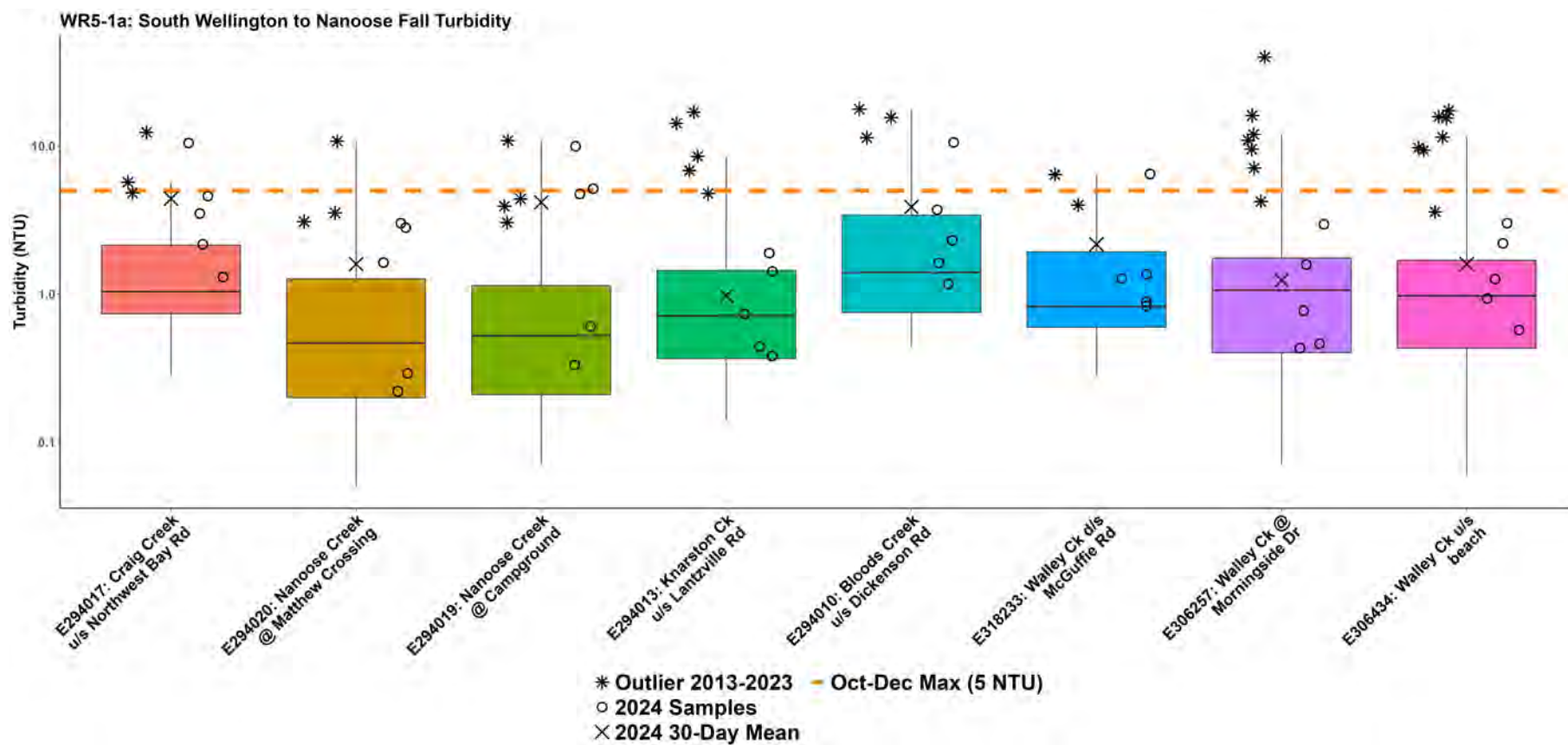
[^]The number of years sampled do not include 2020 due to construction work at the GNPCC.

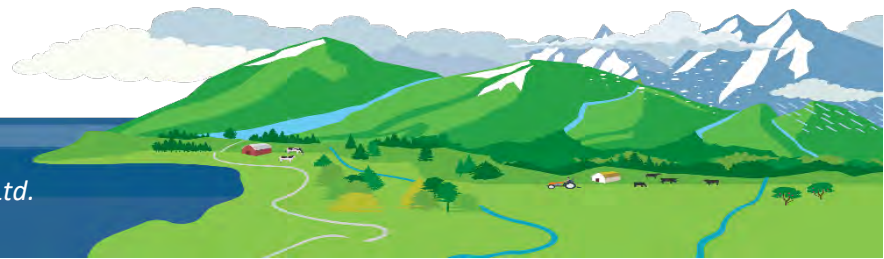
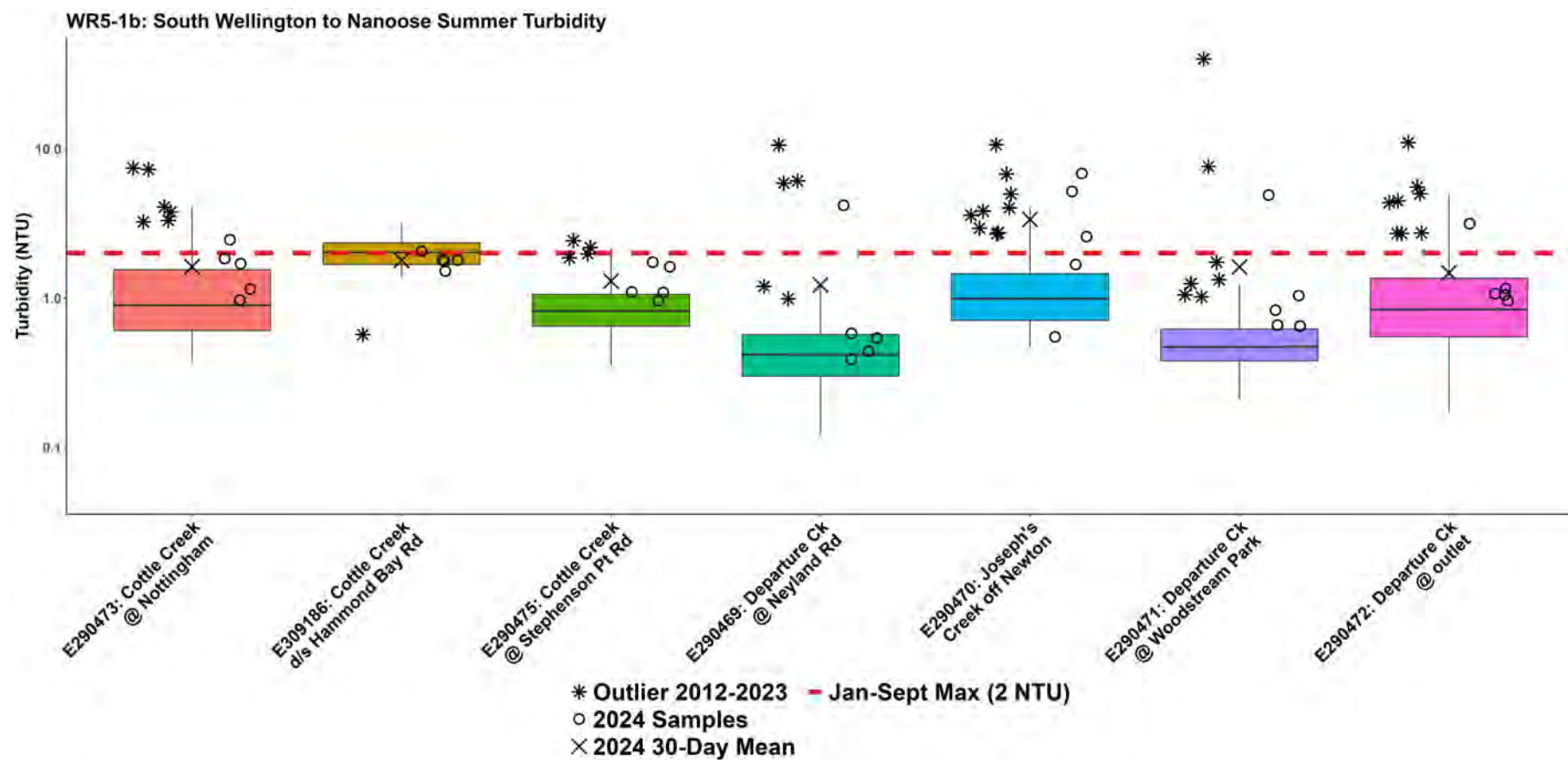


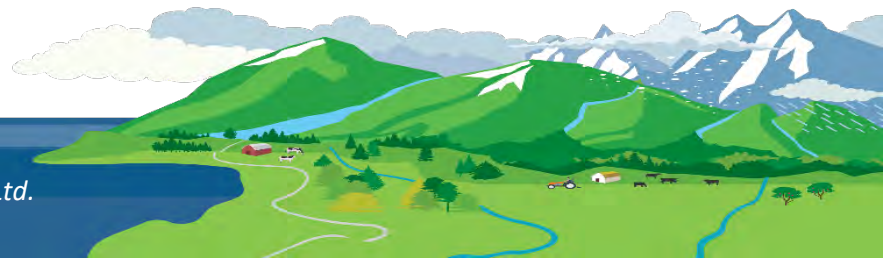
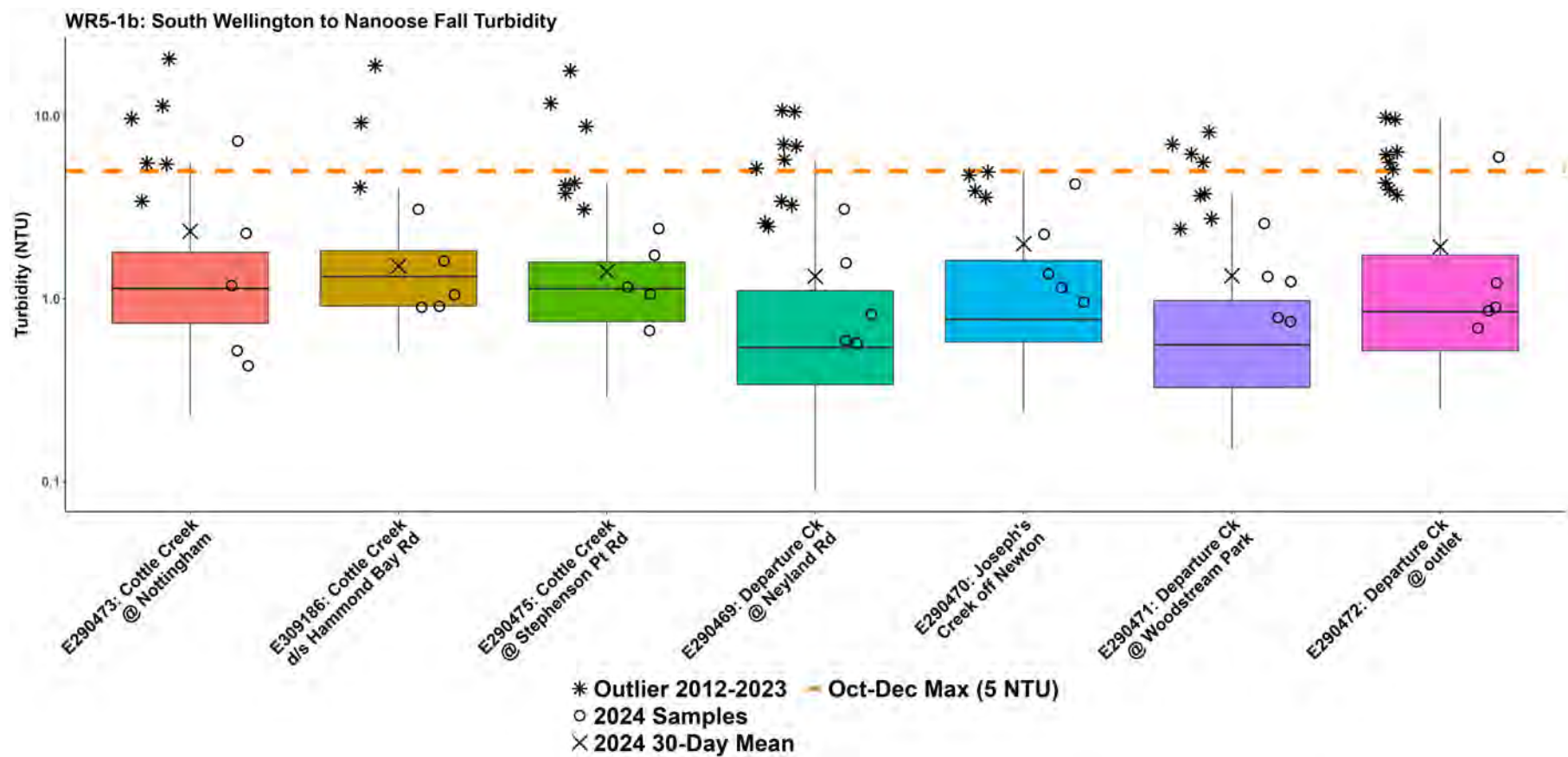
How to Interpret a Box Plot:

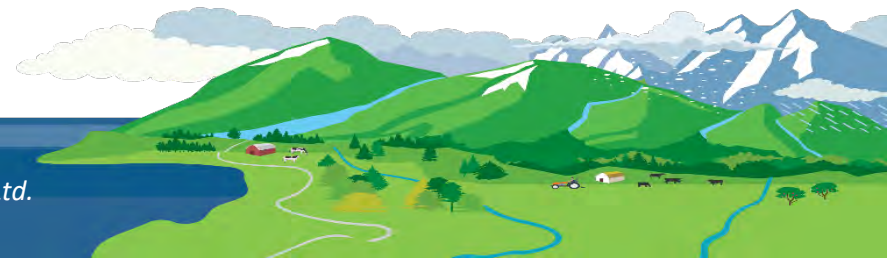
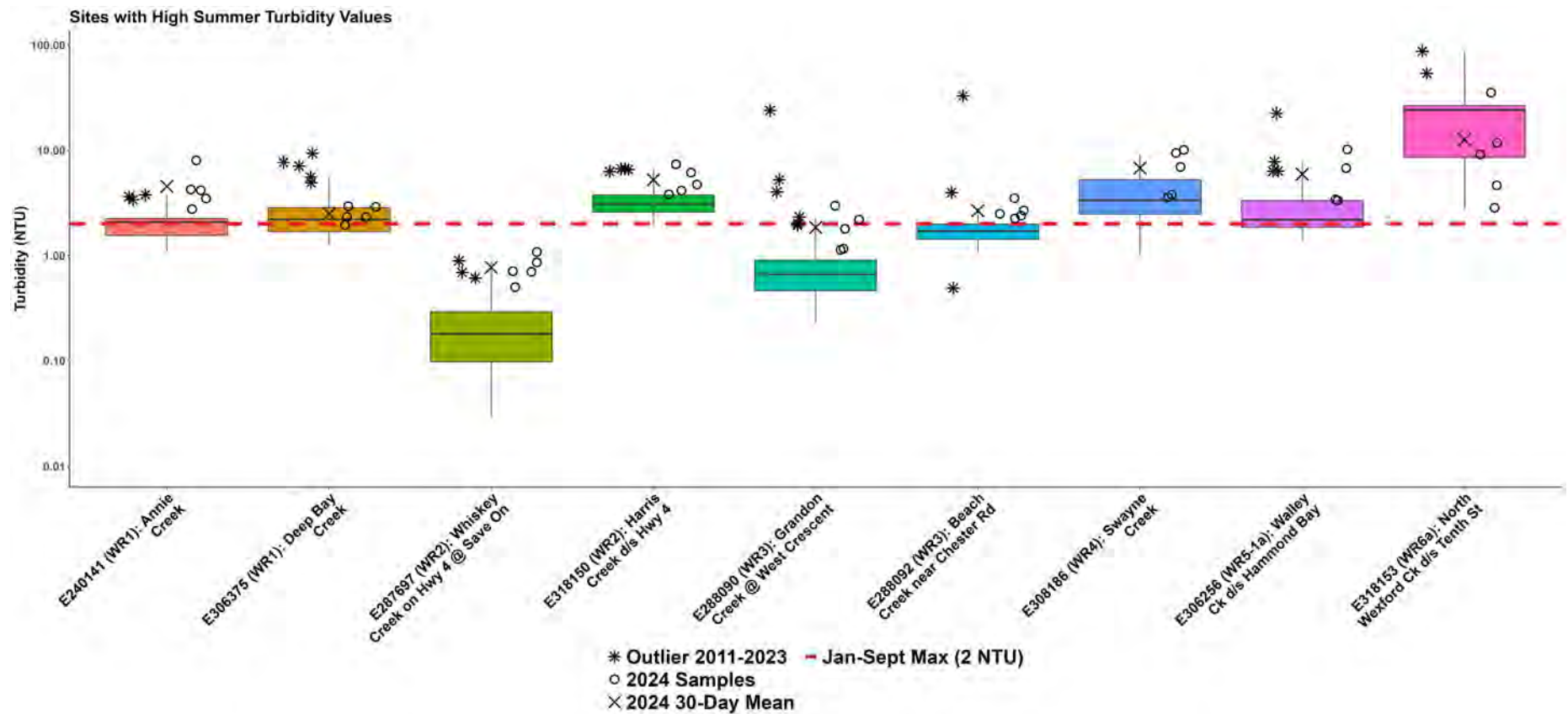


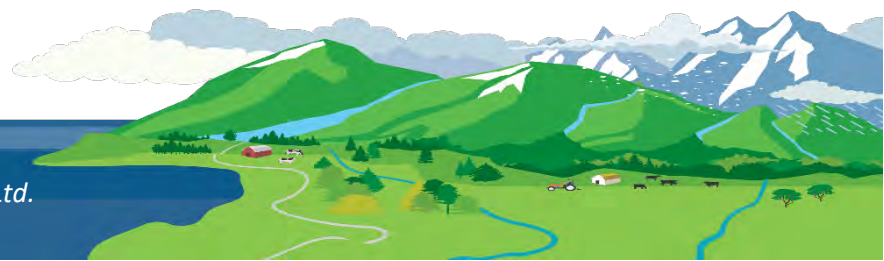
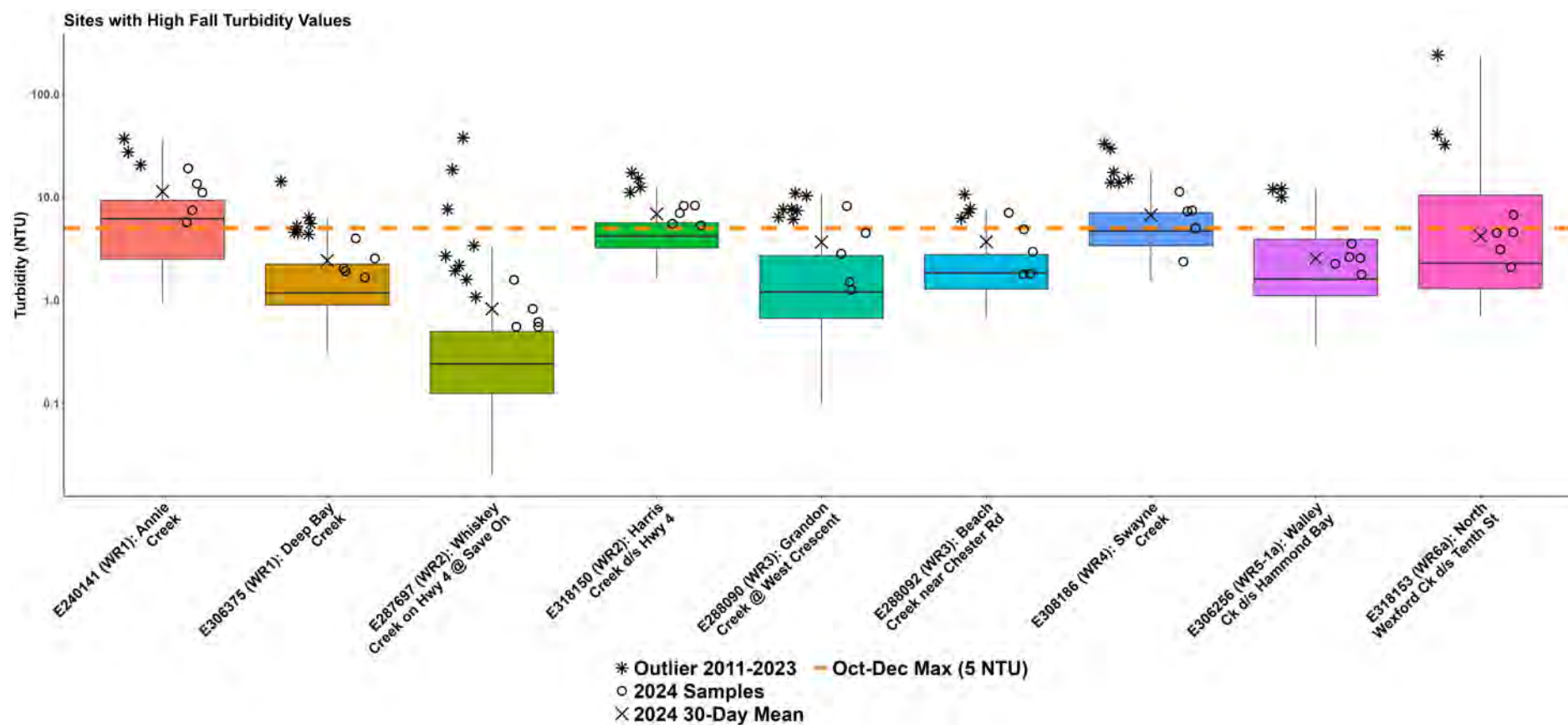


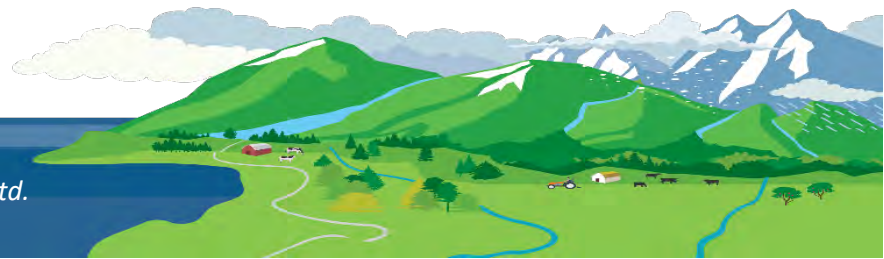
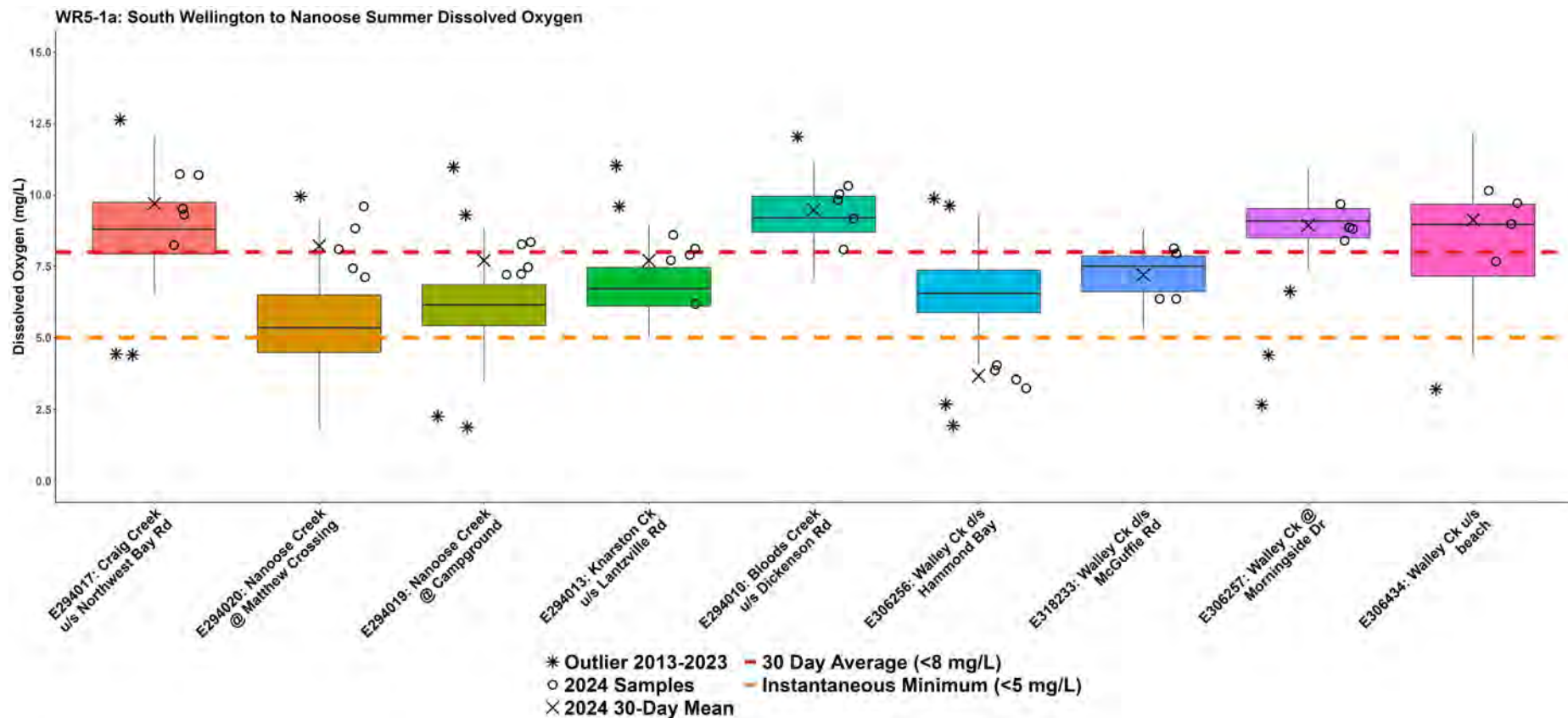


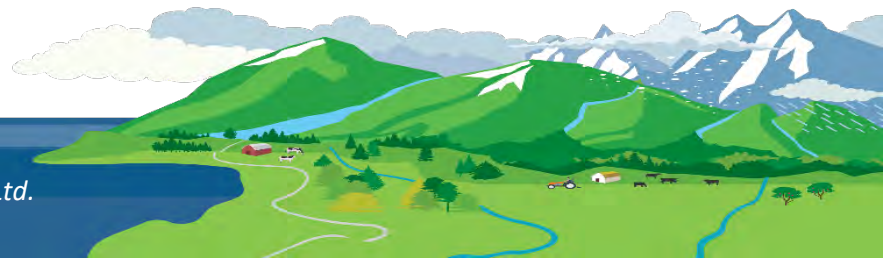
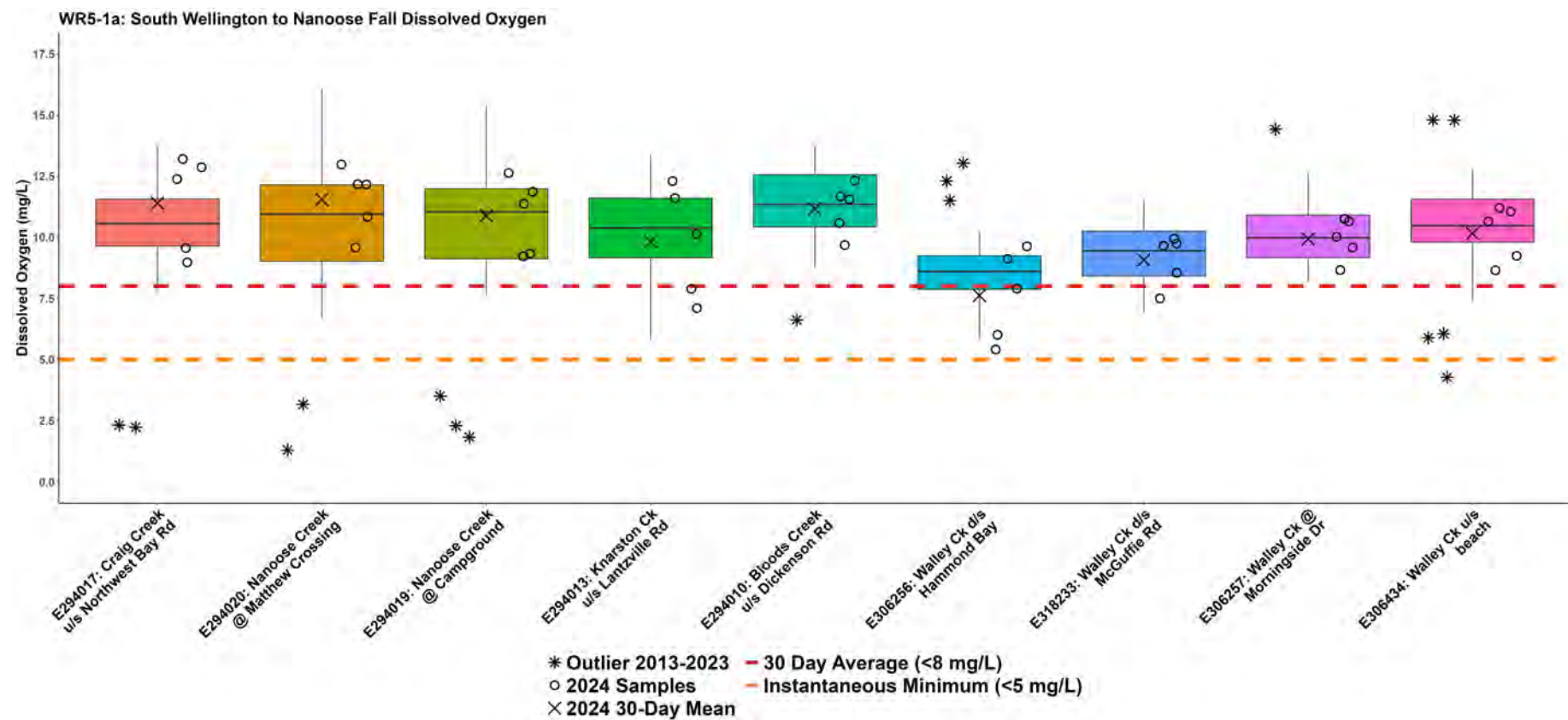




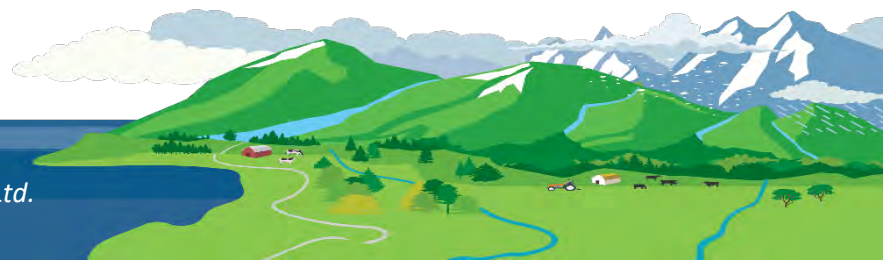
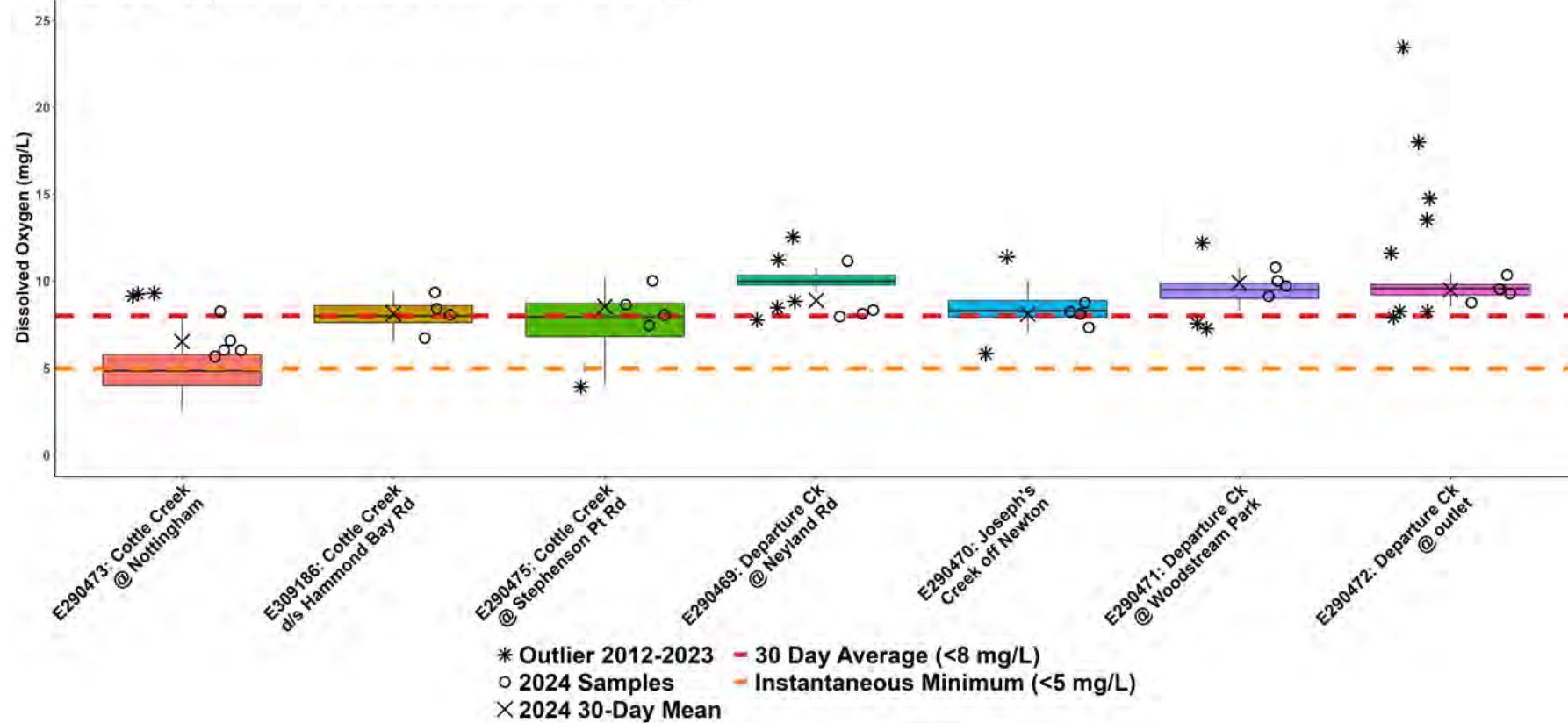


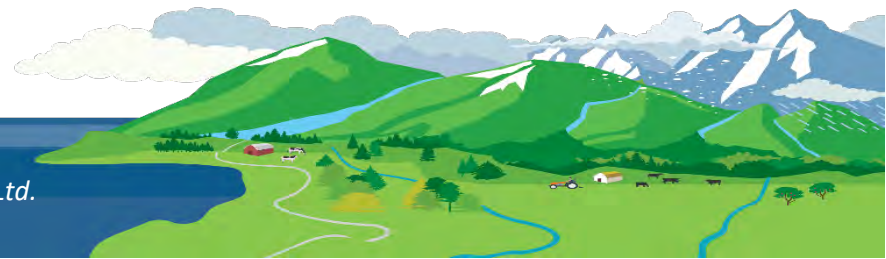
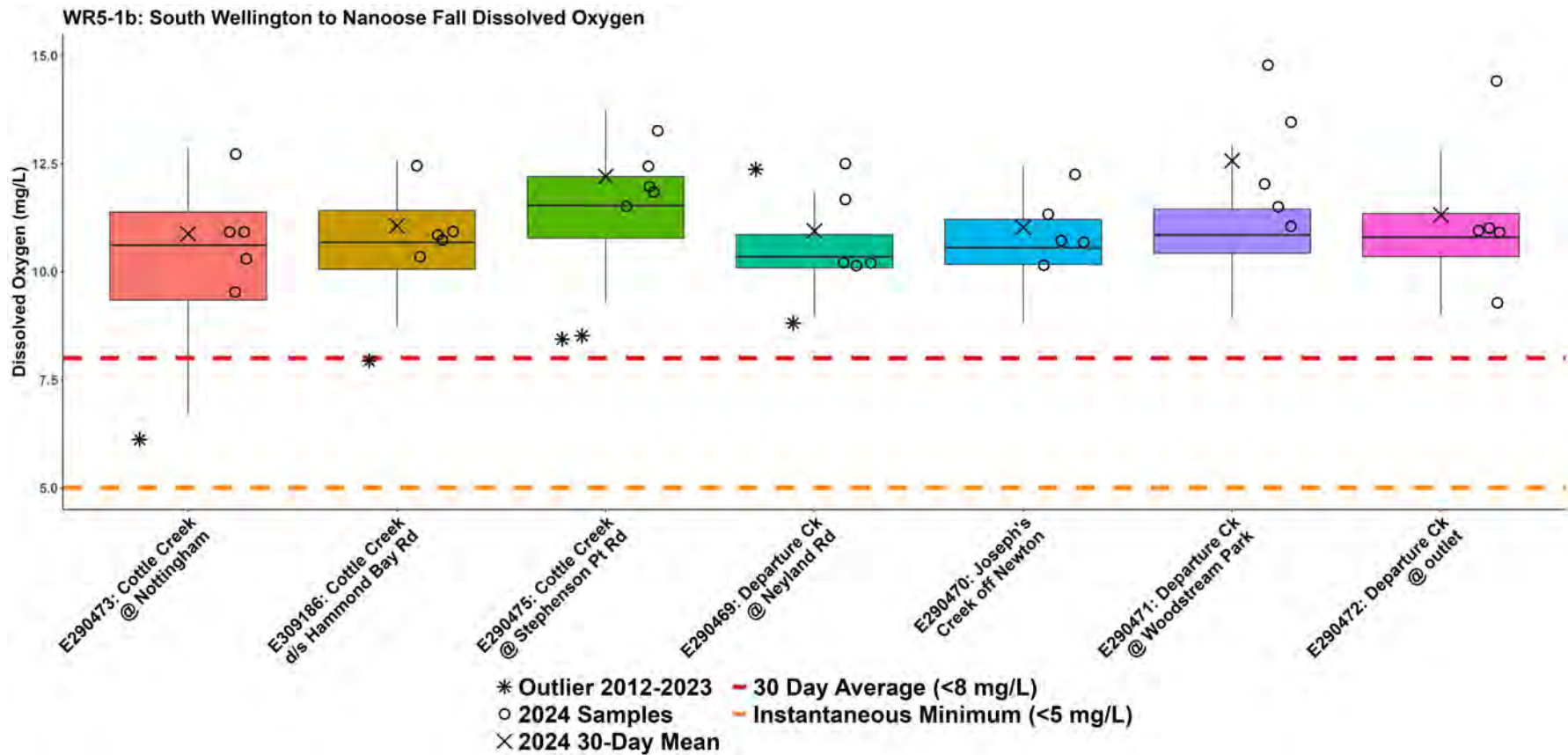


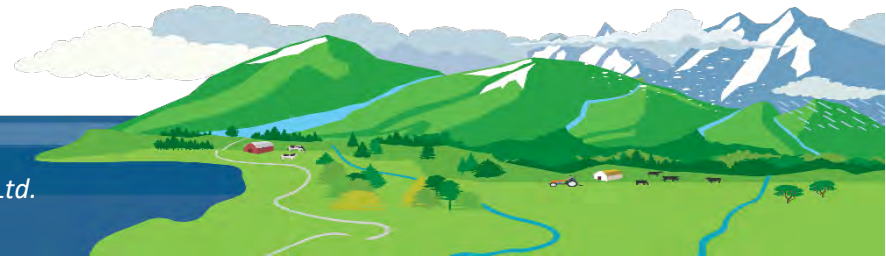
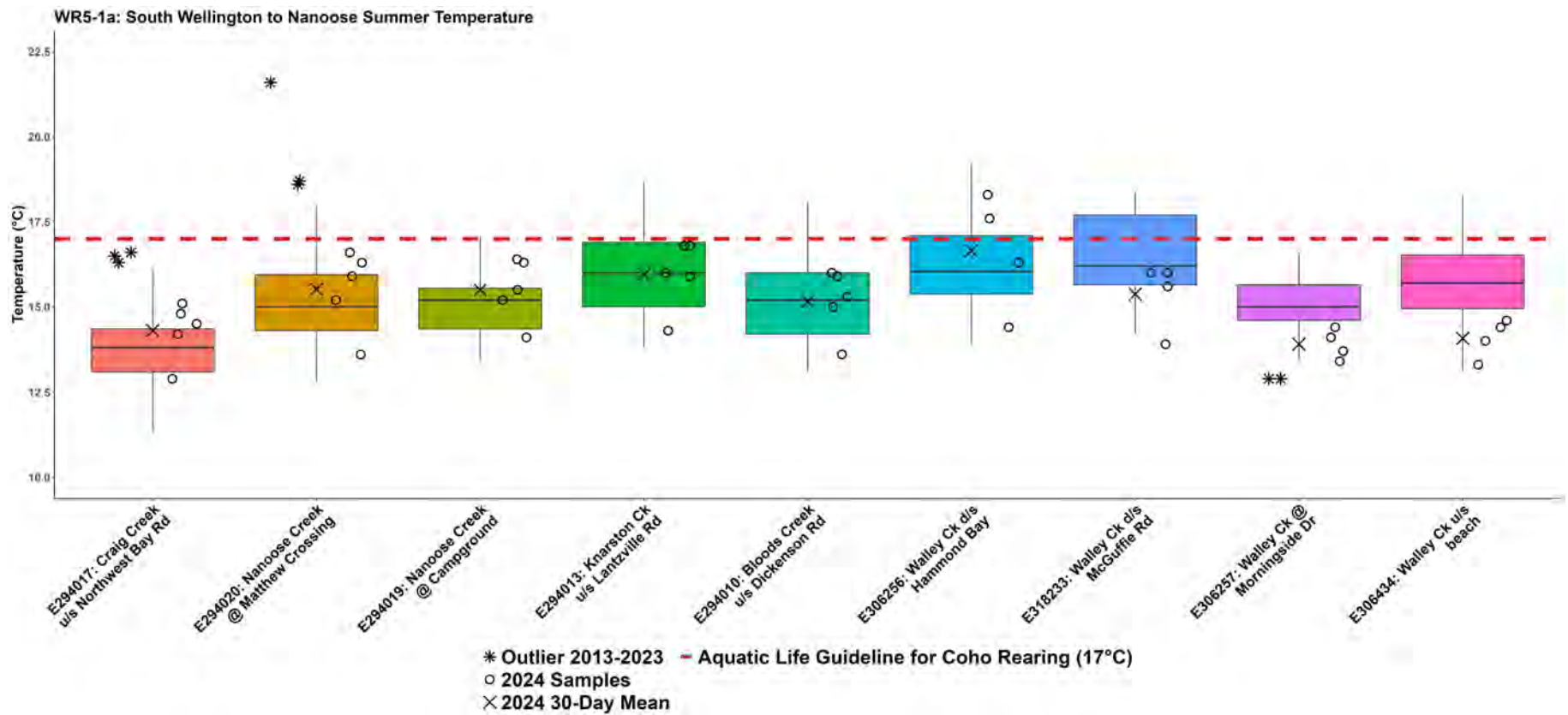


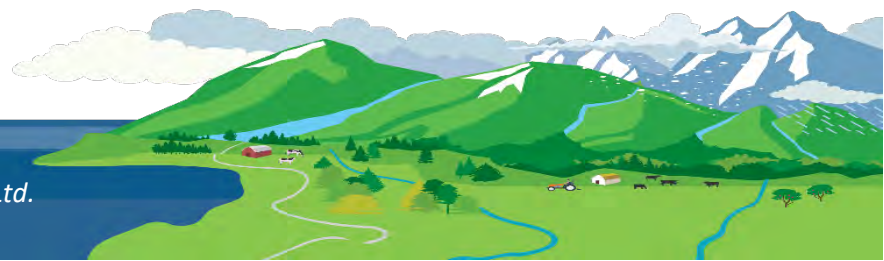
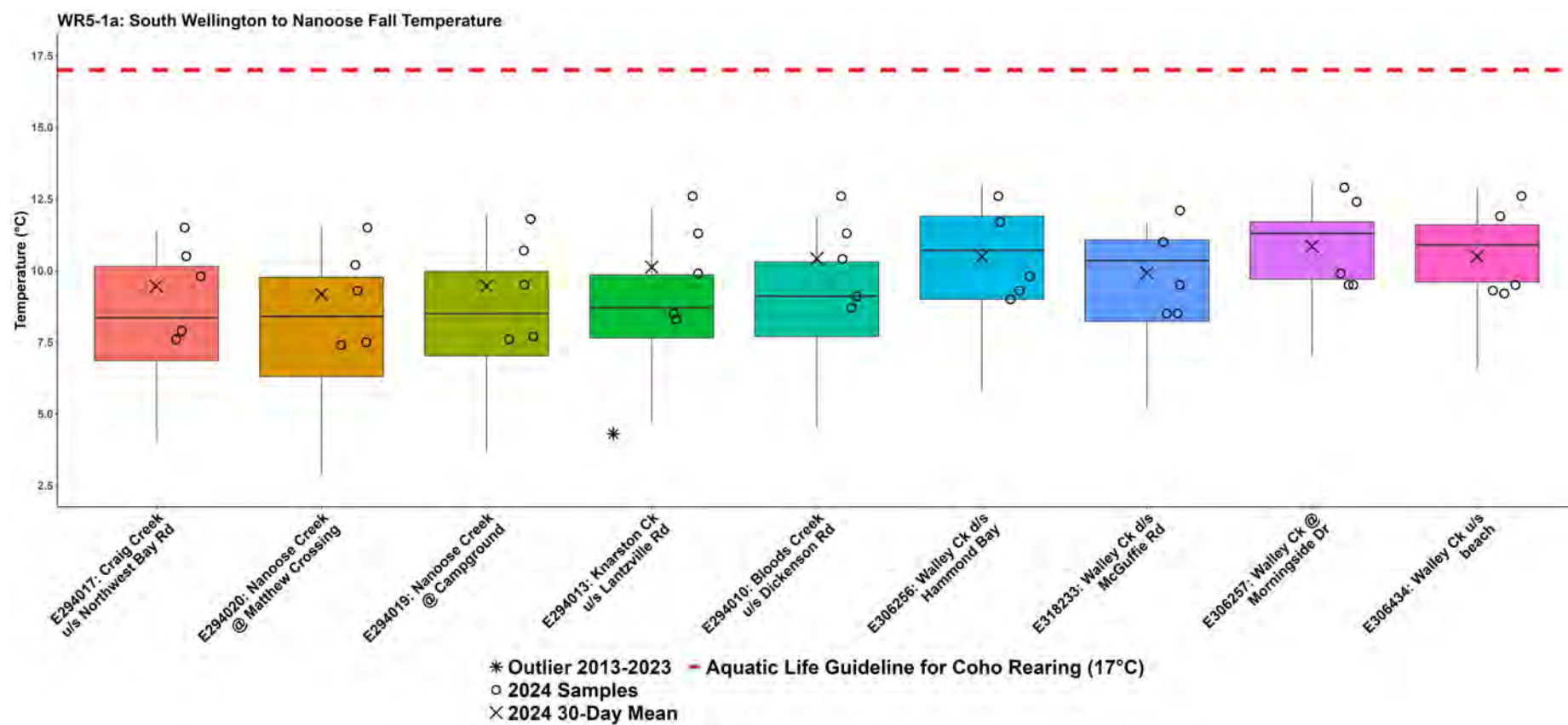


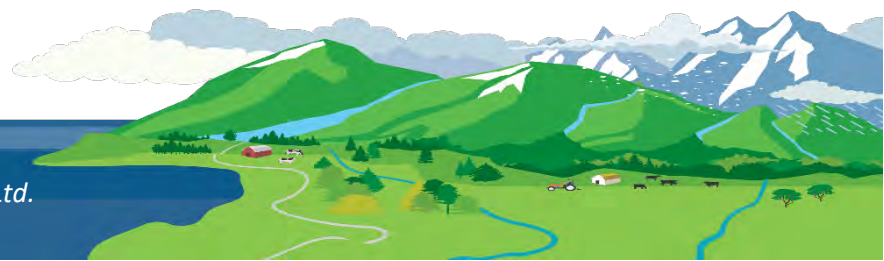
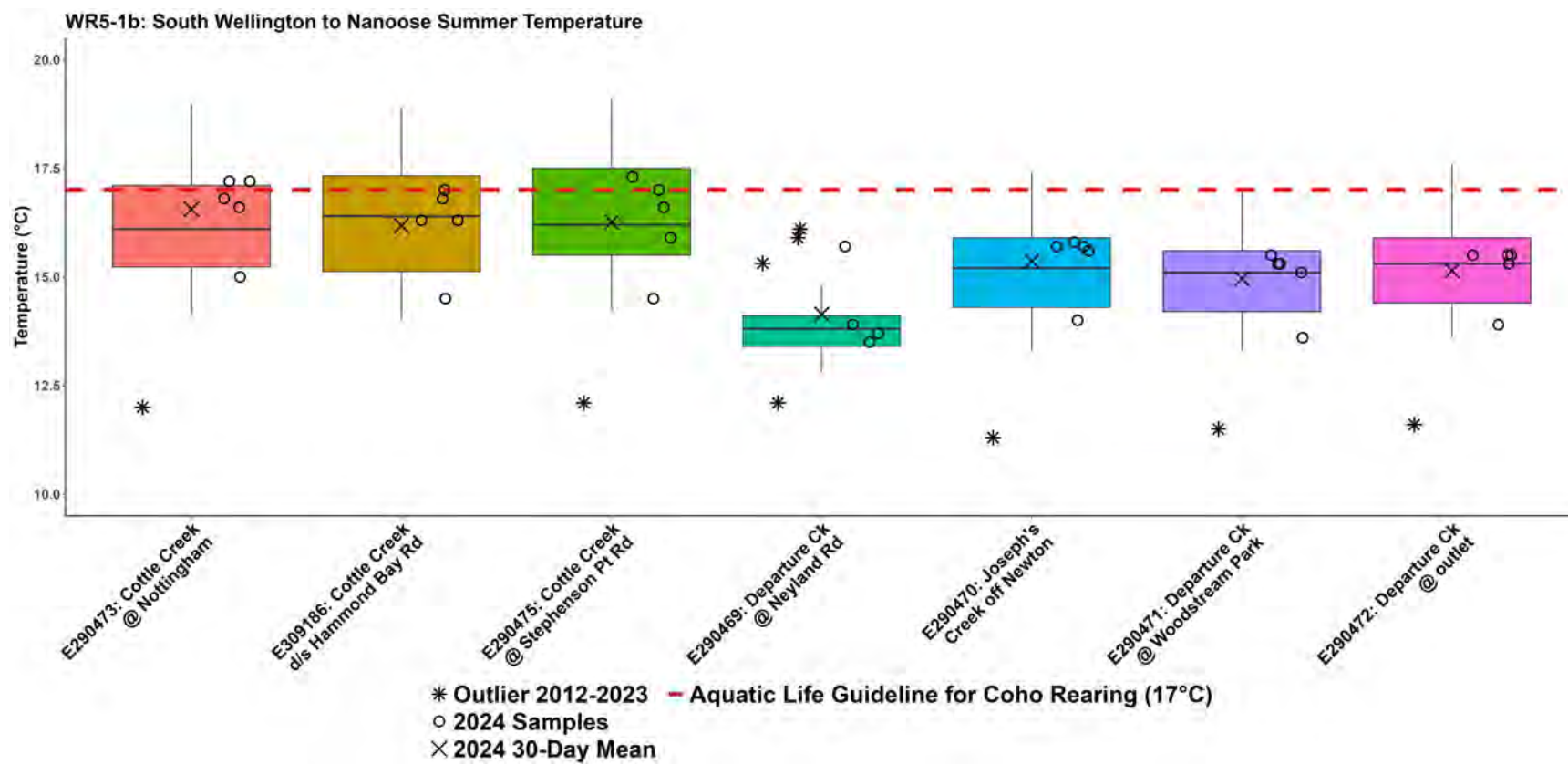
WR5-1b: South Wellington to Nanoose Summer Dissolved Oxygen

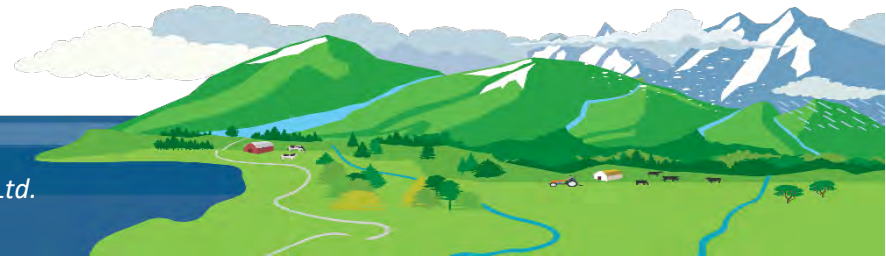
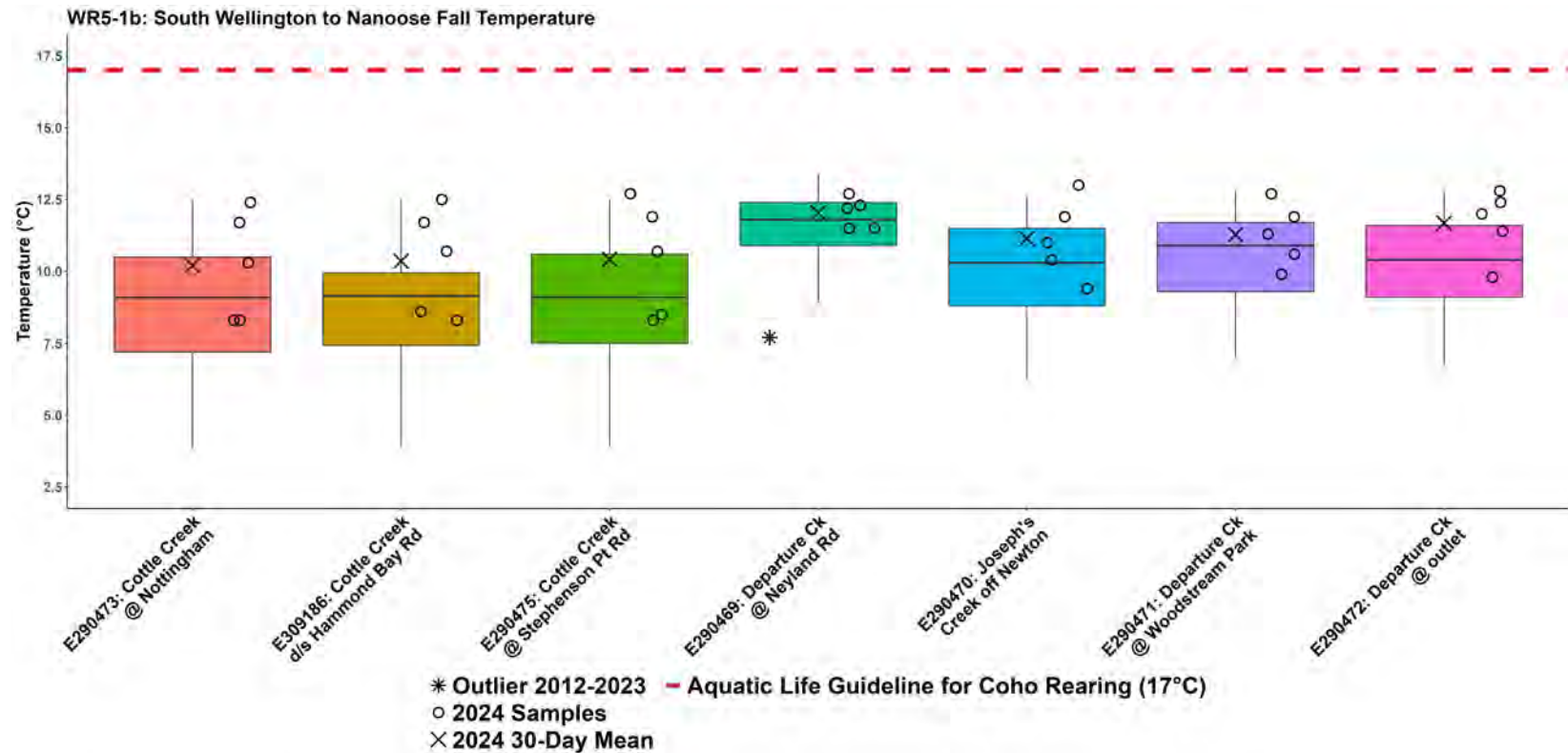


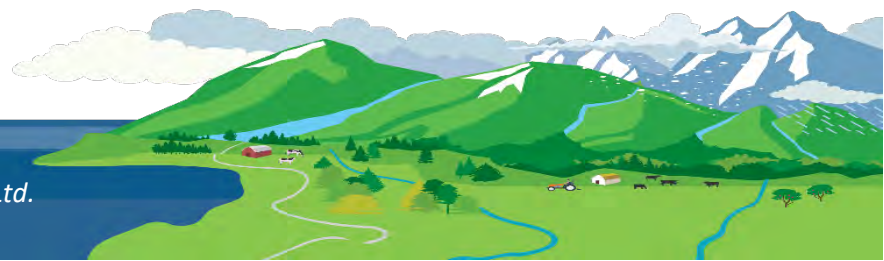
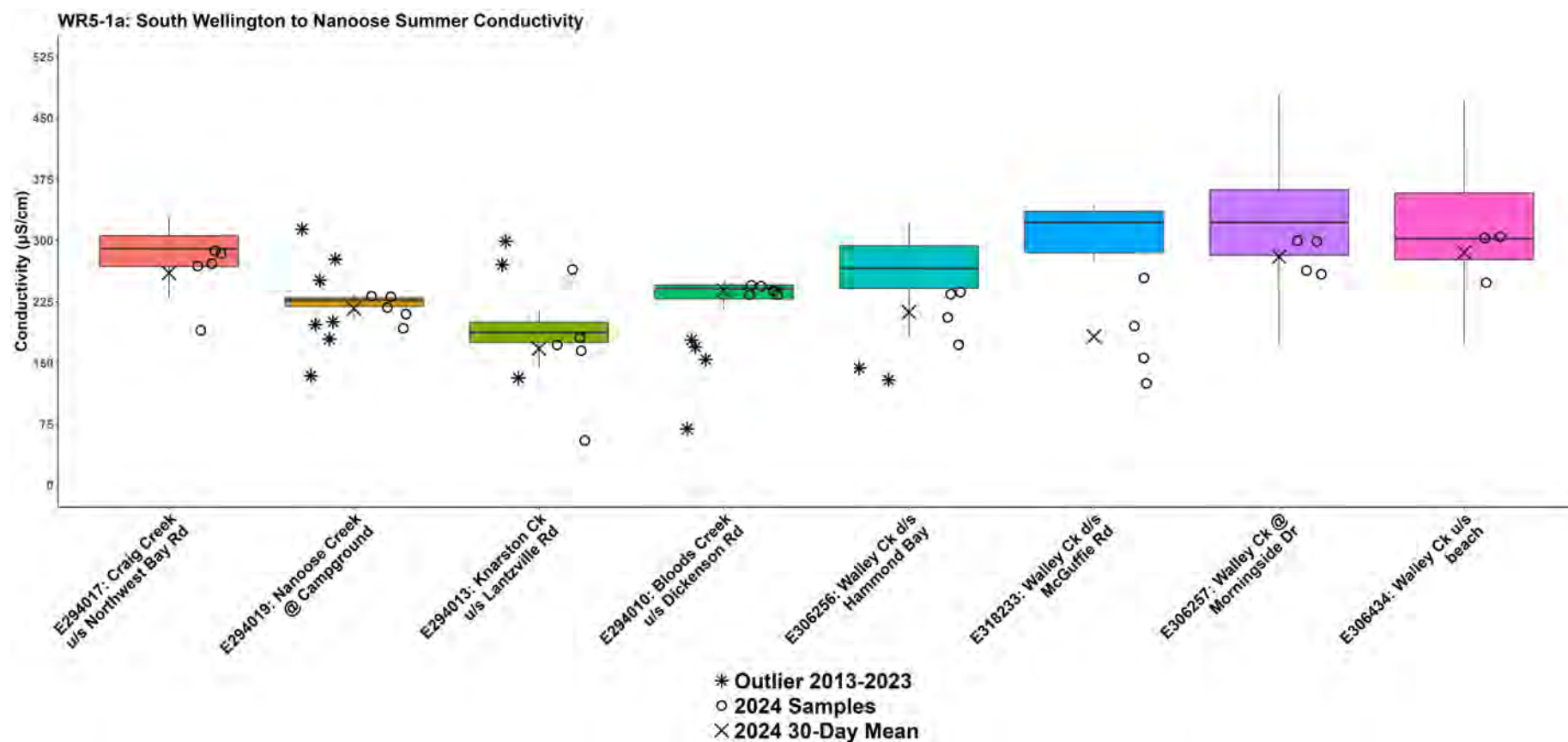


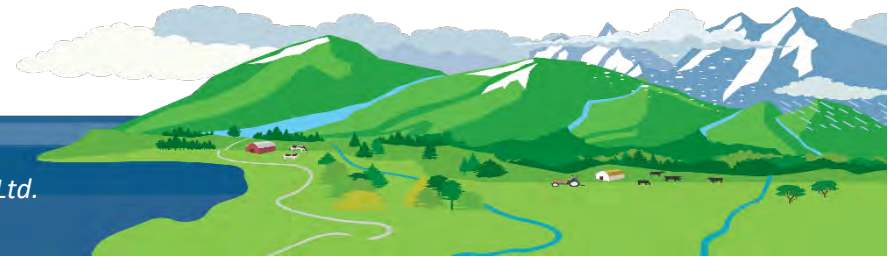
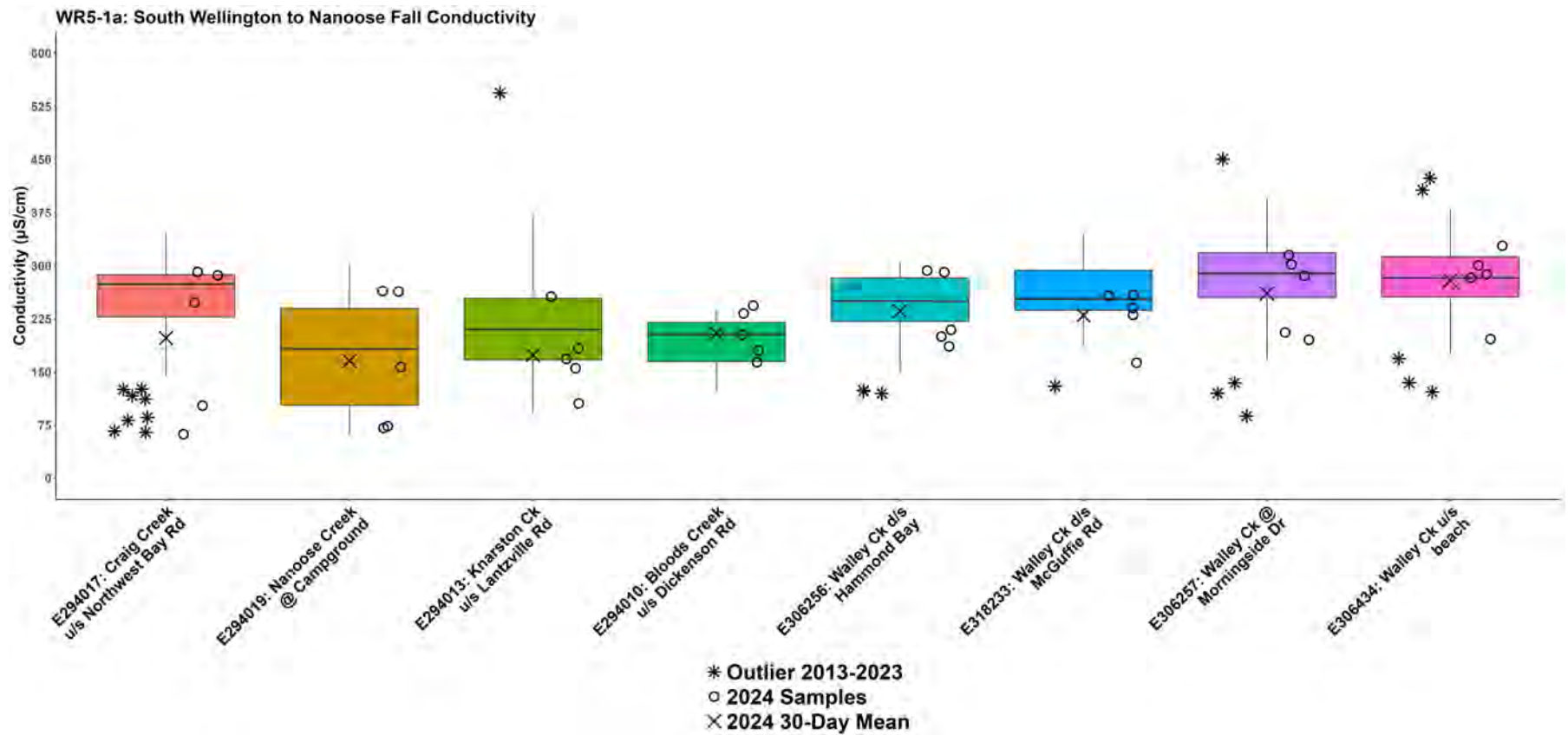




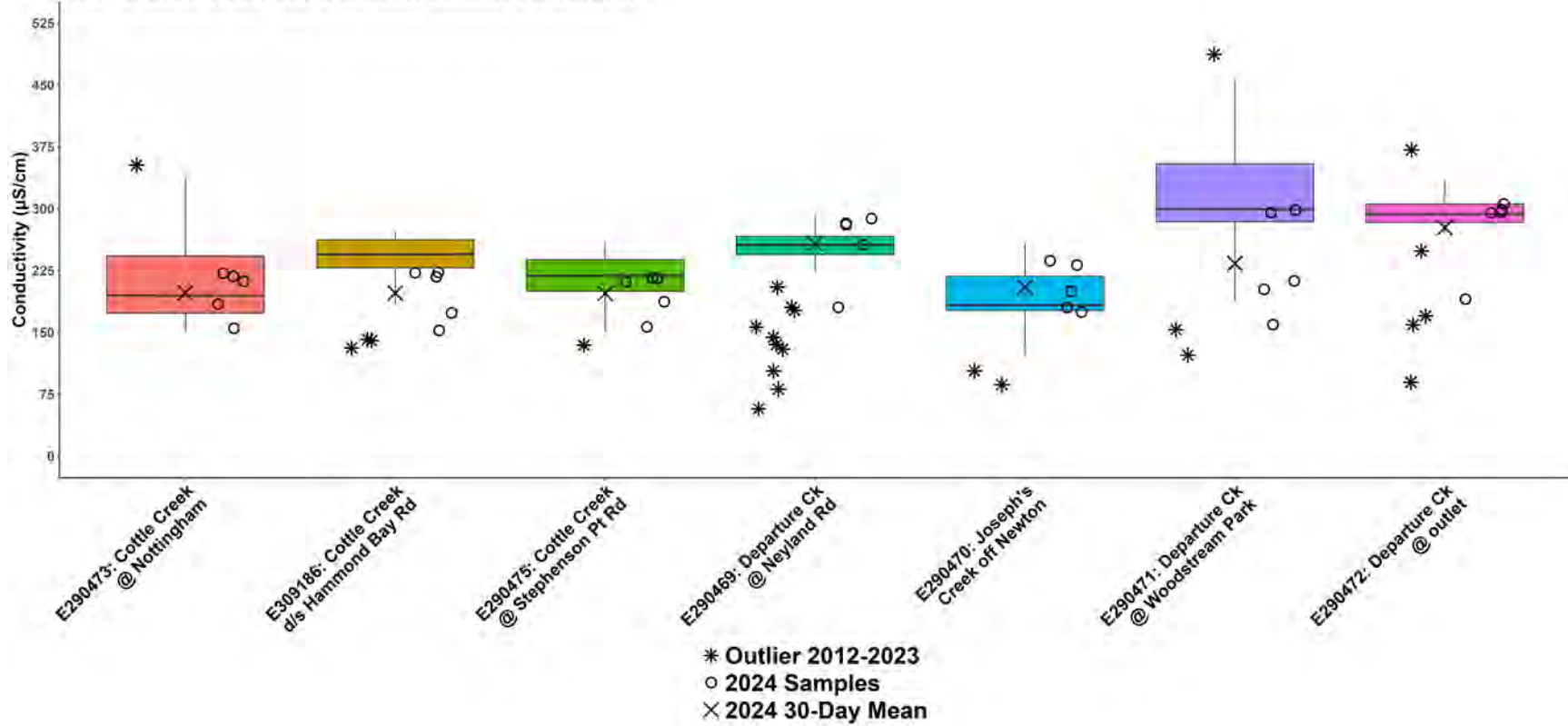








WR5-1b: South Wellington to Nanoose Summer Conductivity



WR5-1b: South Wellington to Nanoose Fall Conductivity

