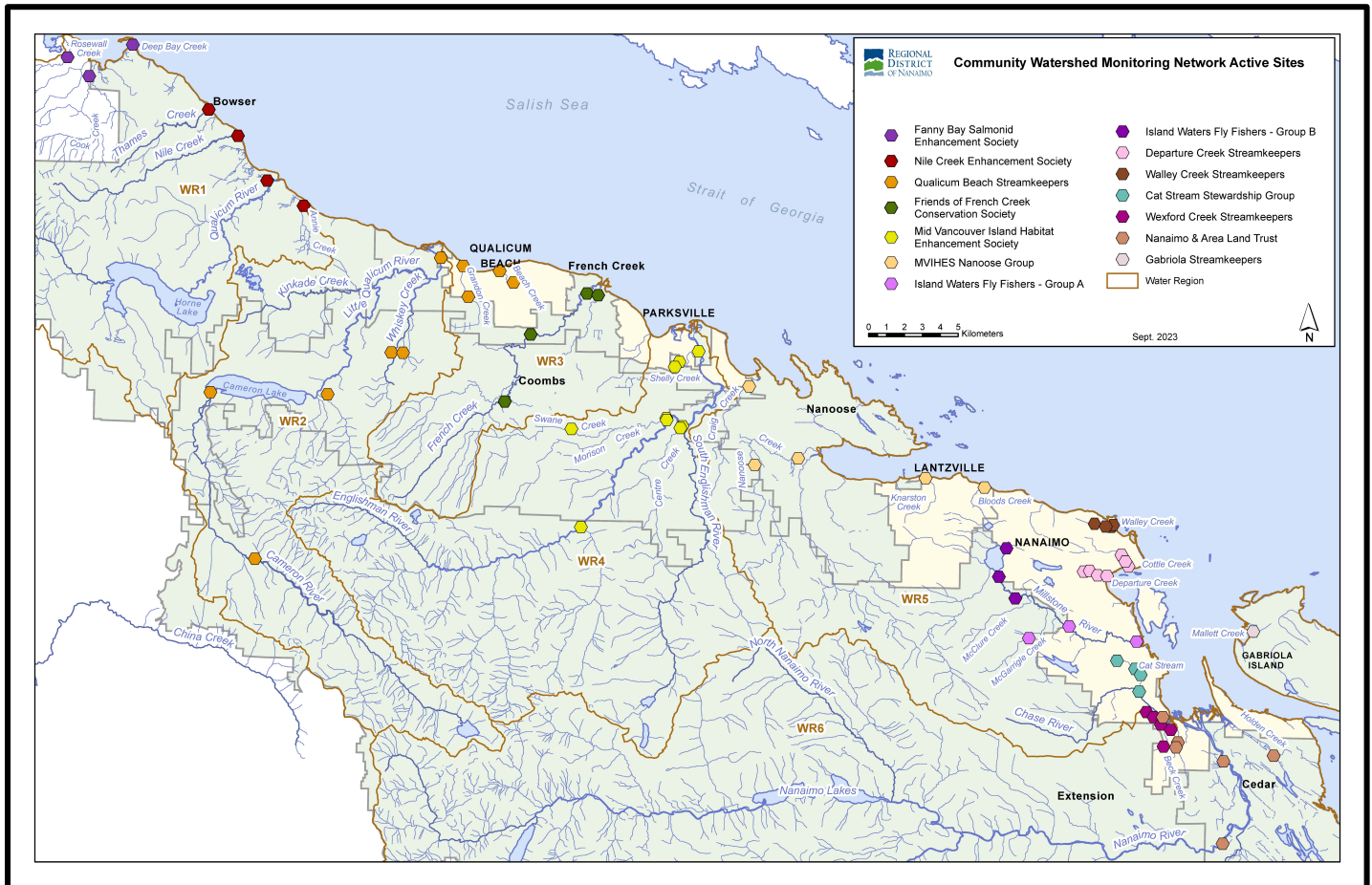


Community Watershed Monitoring Network 2023 Results by Water Region



Included in Water Region (WR) 5-1 package:

1. CWMN WR5 sample sites
2. How to interpret a box plot
3. Box Plot Comparison – 2023 data to previous years: *displayed by parameter (Turbidity, Dissolved Oxygen, Temperature, Conductivity) & sample period (summer, fall)*
4. Mid Vancouver Island Habitat Enhancement Society (MVIHES)
5. Walley Creek Streamkeepers (WCS) map
6. Departure Creek Streamkeepers (DCS)



Water Region 5-1
sampled by:
Mid Vancouver Island Habitat Enhancement Society (MVIHES)
&
Walley Creek Streamkeepers (WCS)
&
Departure Creek Streamkeepers (DCS)



WR5-1 CWMN Sample Sites:

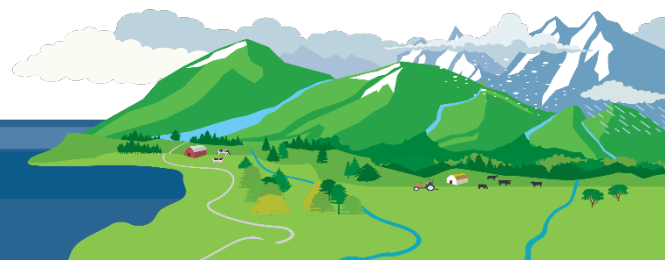
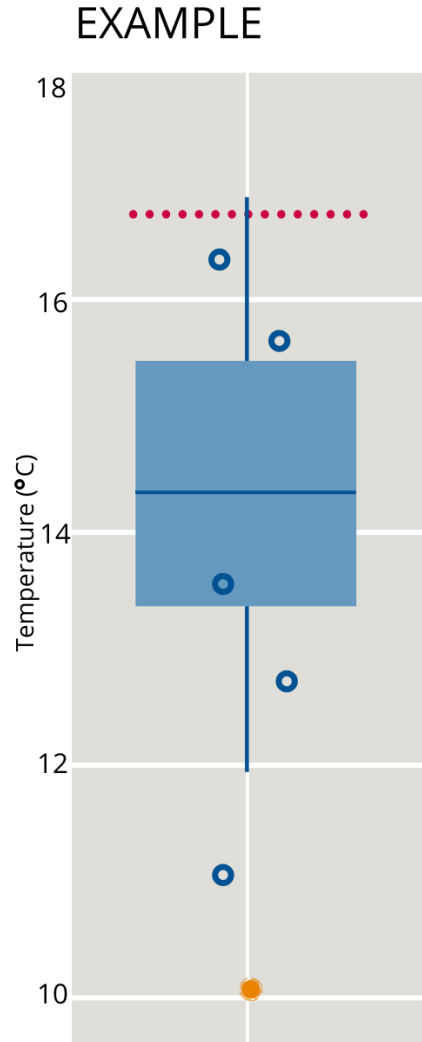
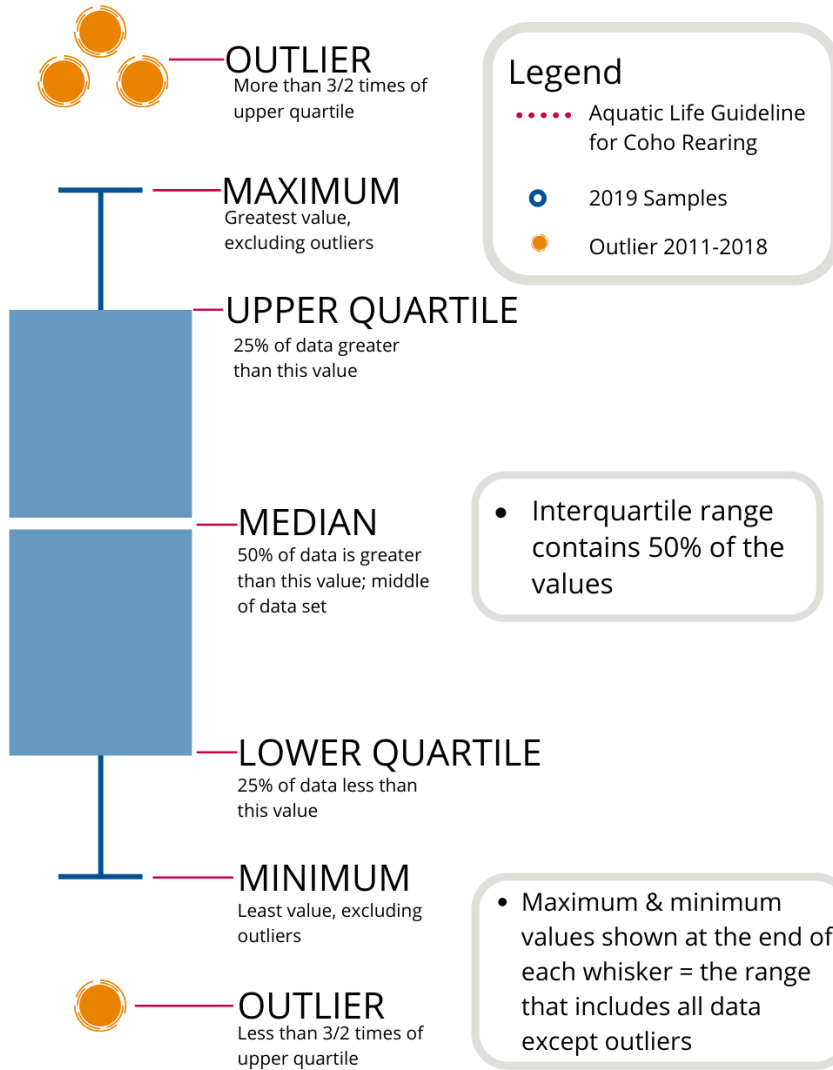
The table below shows the sites monitored by each of the streamkeeper organizations, as well as the number of years and which years a site was sampled. The number of years is important to keep in mind when interpreting the box plots as the plot for each site may contain a slightly different temporal range.

Group	EMS ID	Geographic Description	Years Sampled	Years Monitored
MVIHES	E294010	Bloods Creek just u/s Dickenson Rd	6.5	2017 – present*
MVIHES	E294013	Knarston Ck just u/s Lantzville Rd	6.5	2017 – present*
MVIHES	E294017	Craig Creek just u/s Northwest Bay Rd	2	2022 – present
MVIHES	E294019	Nanoose Creek @ Nanoose Campground	2	2022 – present
MVIHES	E294020	Nanoose Creek @ Matthew Crossing	2	2022 – present
DCS	E290469	Departure Ck @ Neyland Rd (Stn1)	12	2012 – present
DCS	E290470	Josephs Ck (Dept Ck trib) off Newton (Stn 2)	12	2012 – present
DCS	E290471	Departure Ck in Woodstream Park (Stn 3)	12	2012 – present
DCS	E290472	Departure Ck @ outlet (Stn 4)	12	2012 – present
DCS	E290473	Cottle Creek @ Nottingham	12	2012 – present
DCS	E309186	Cottle Creek d/s of Hammond Bay Road	7	2017 – present
DCS	E290475	Cottle Creek @ Stephenson Pt Rd	12	2012 – present
WCS	E306256	Walley Ck d/s Hammond Bay	8	2016 – present
WCS	E306257	Walley Ck @ Morningside Dr	8	2016 – present
WCS	E306434	Walley Creek 20m u/s beach	8	2016 – present
WCS	E318233	Walley Ck 100 m d/s McGuffie Rd	4	2019 – present^

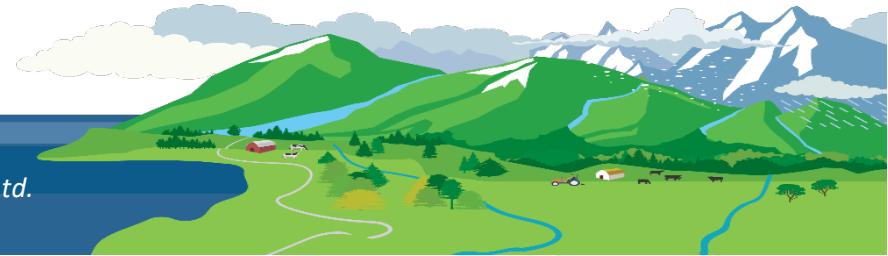
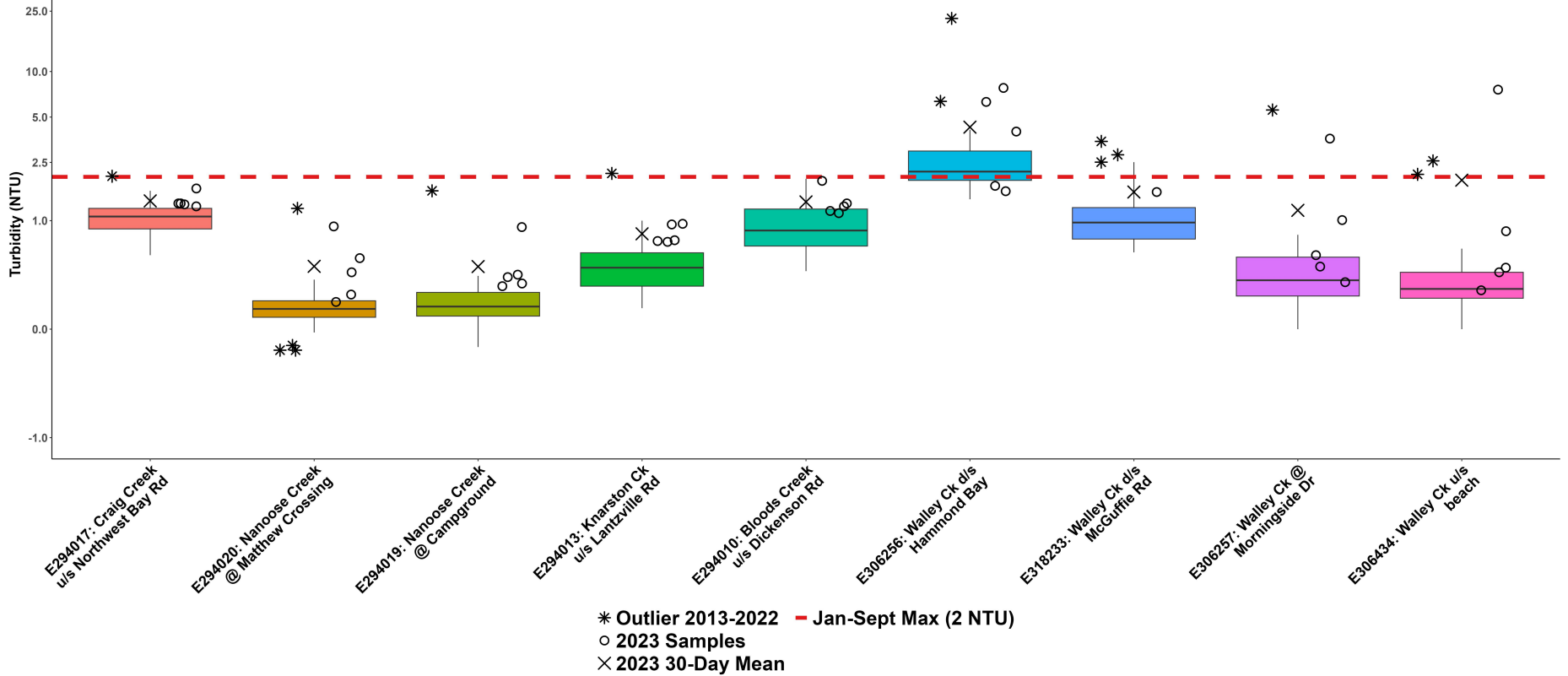
*Monitored in the fall of 2017. ^Could not monitor in 2020 due to blocked access.

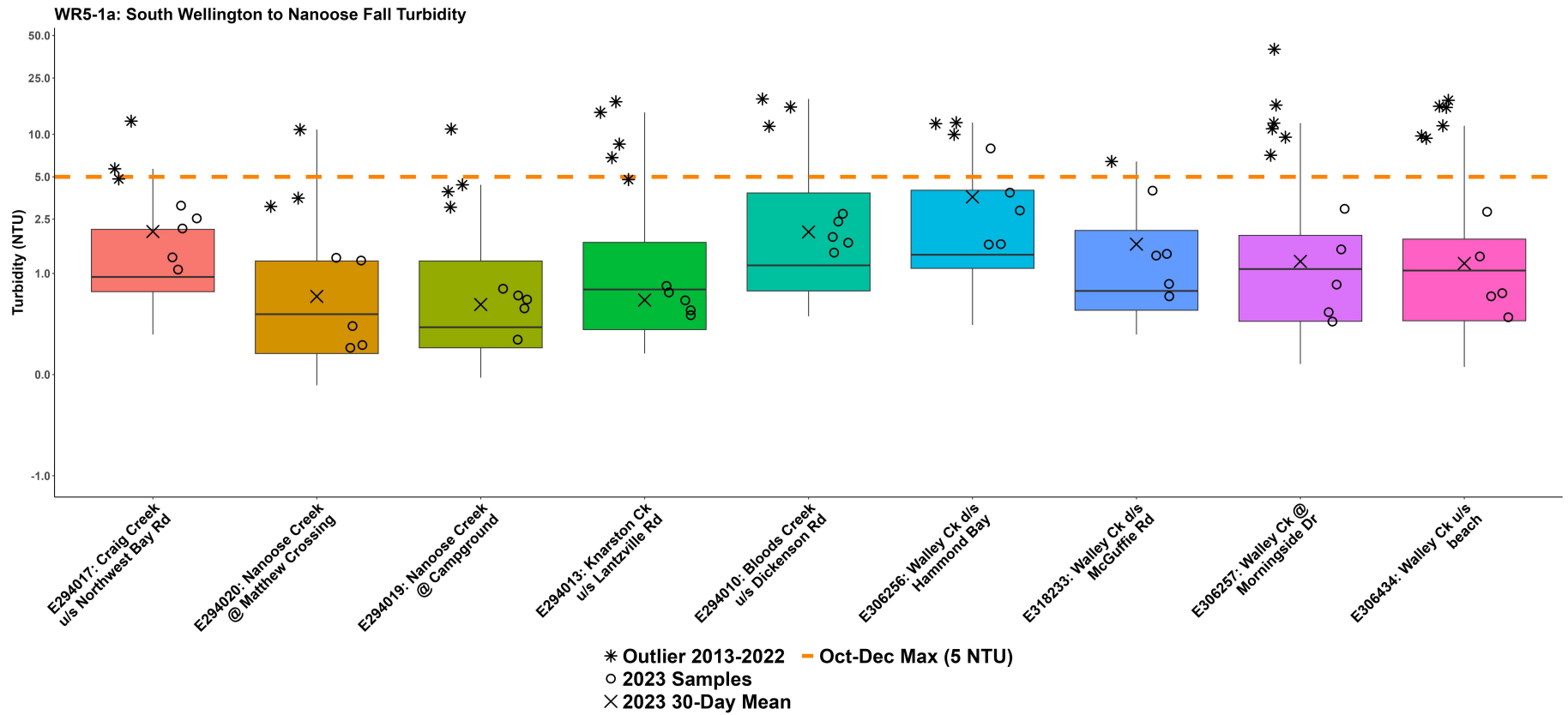


How to Interpret a Box Plot:

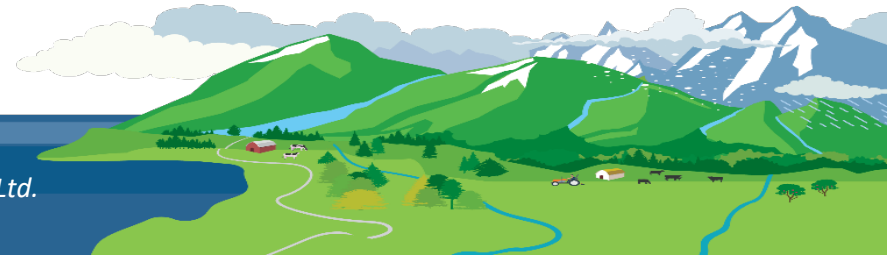
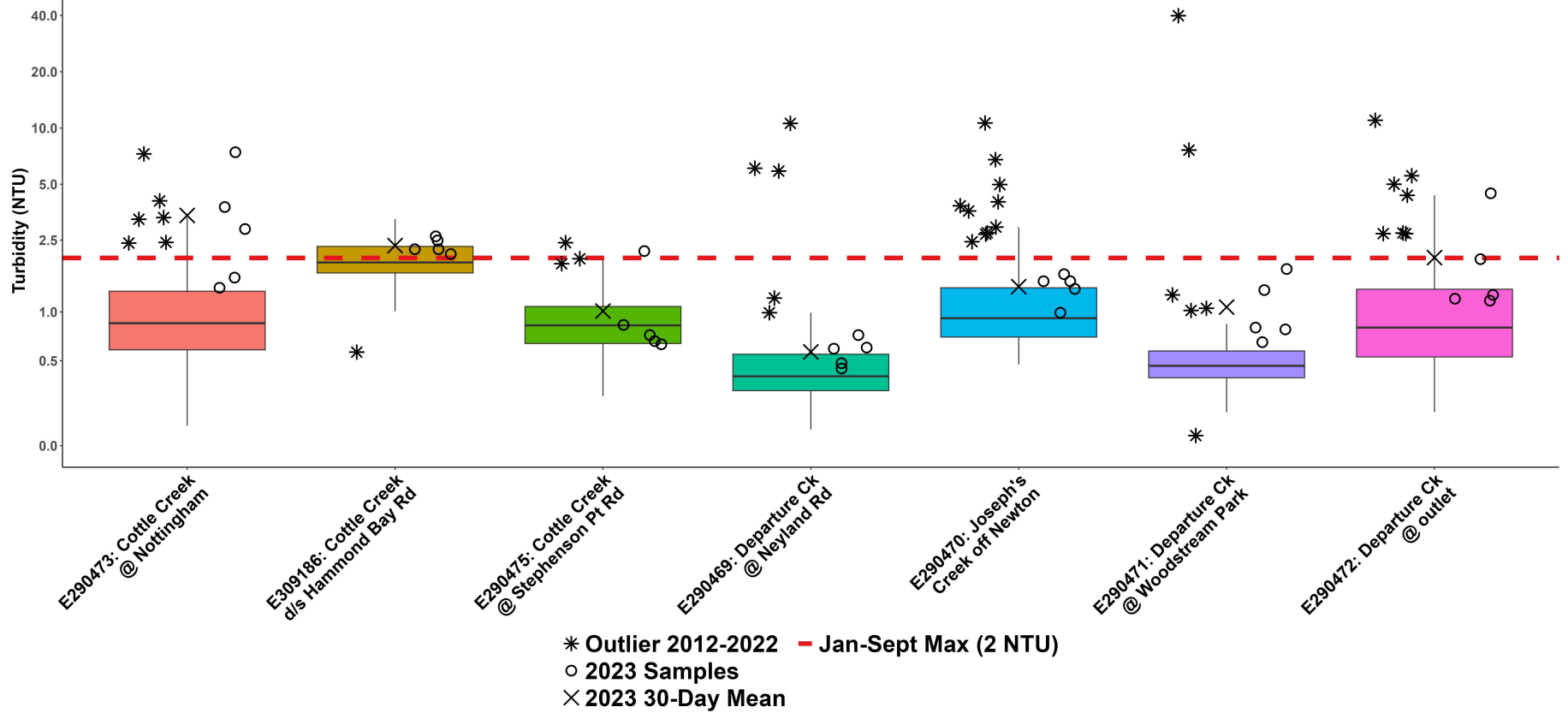


WR5-1a: South Wellington to Nanoose Summer Turbidity

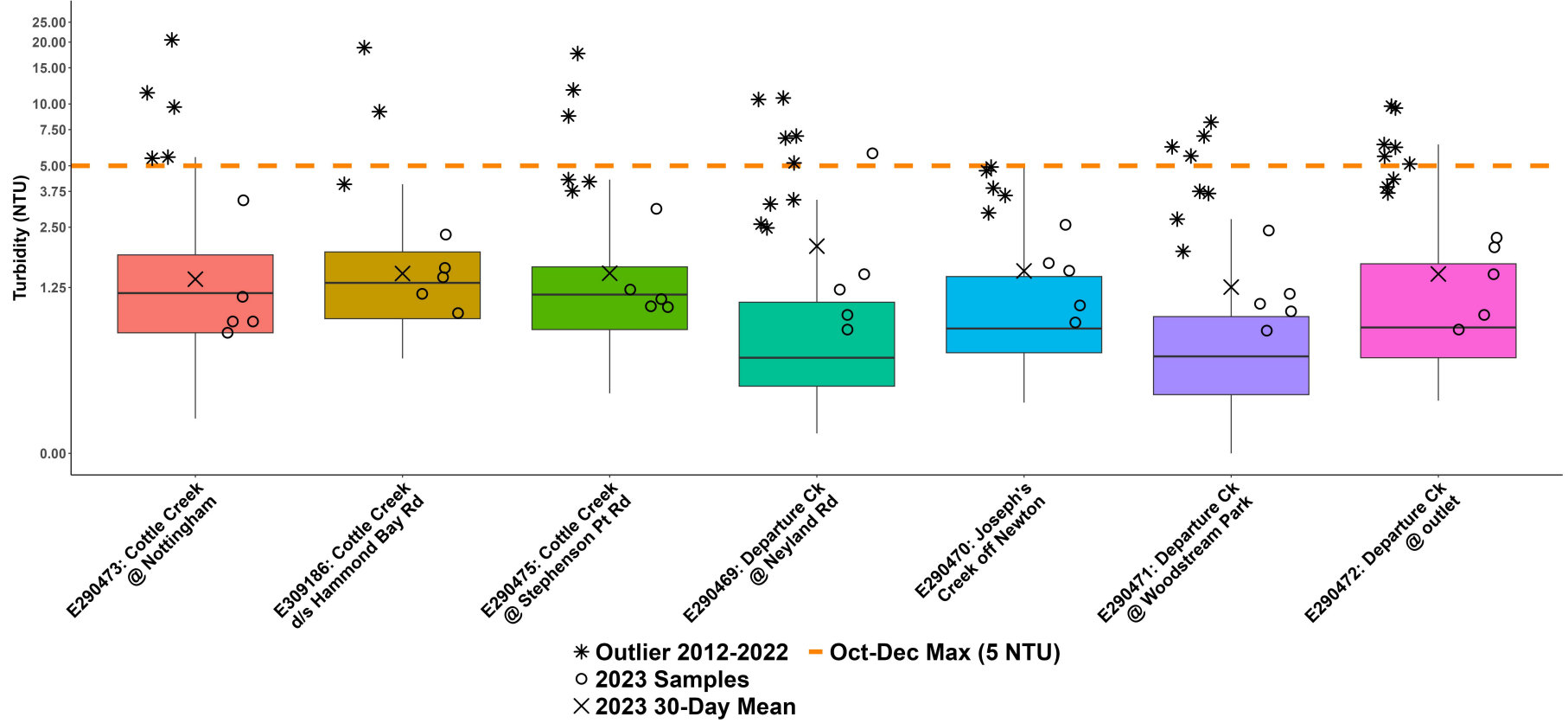




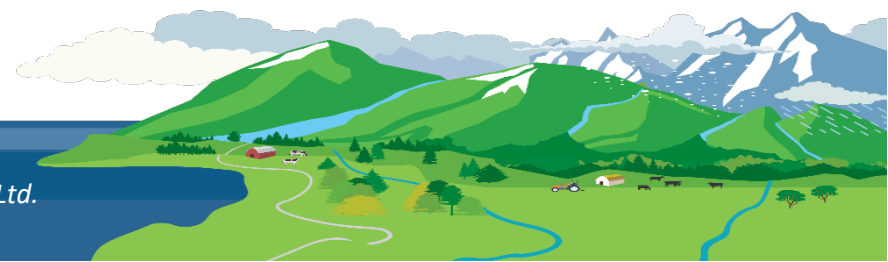
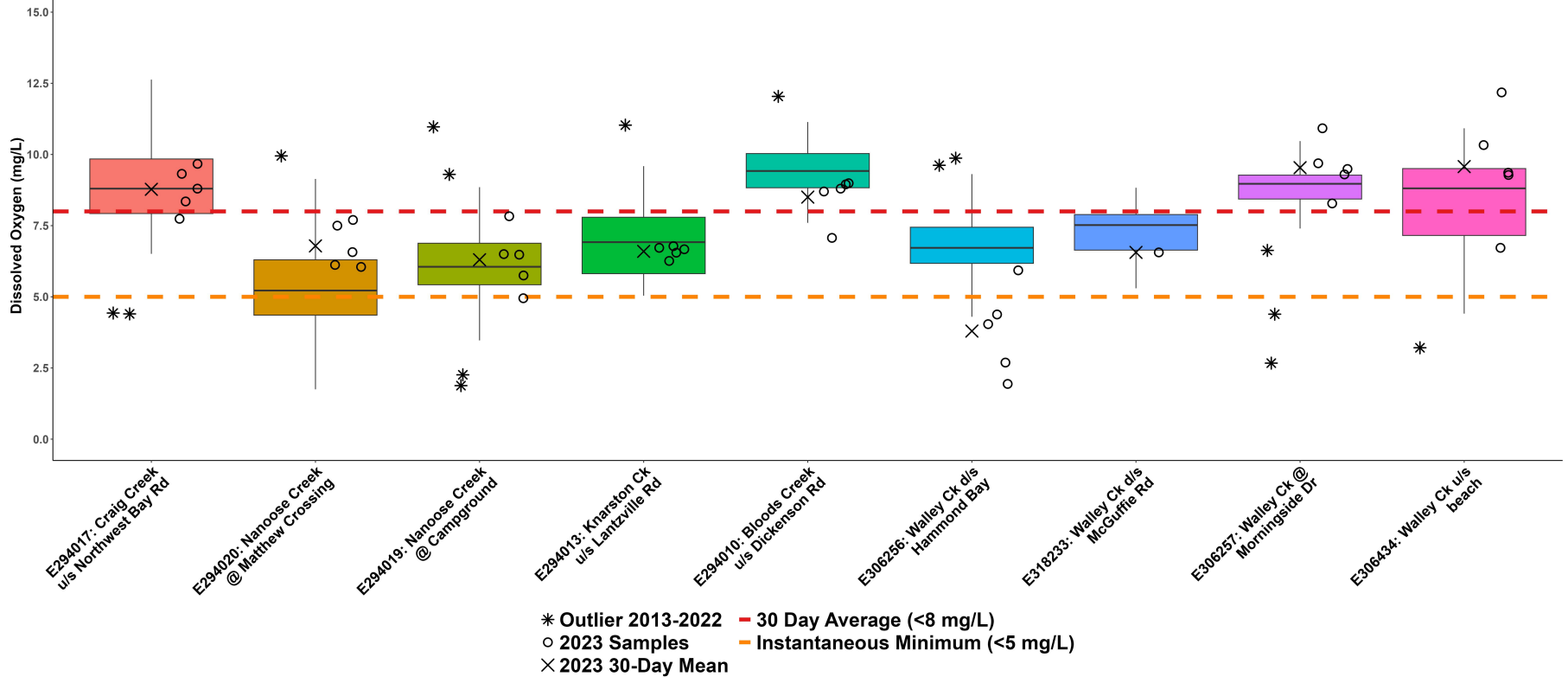
WR5-1b: South Wellington to Nanoose Summer Turbidity



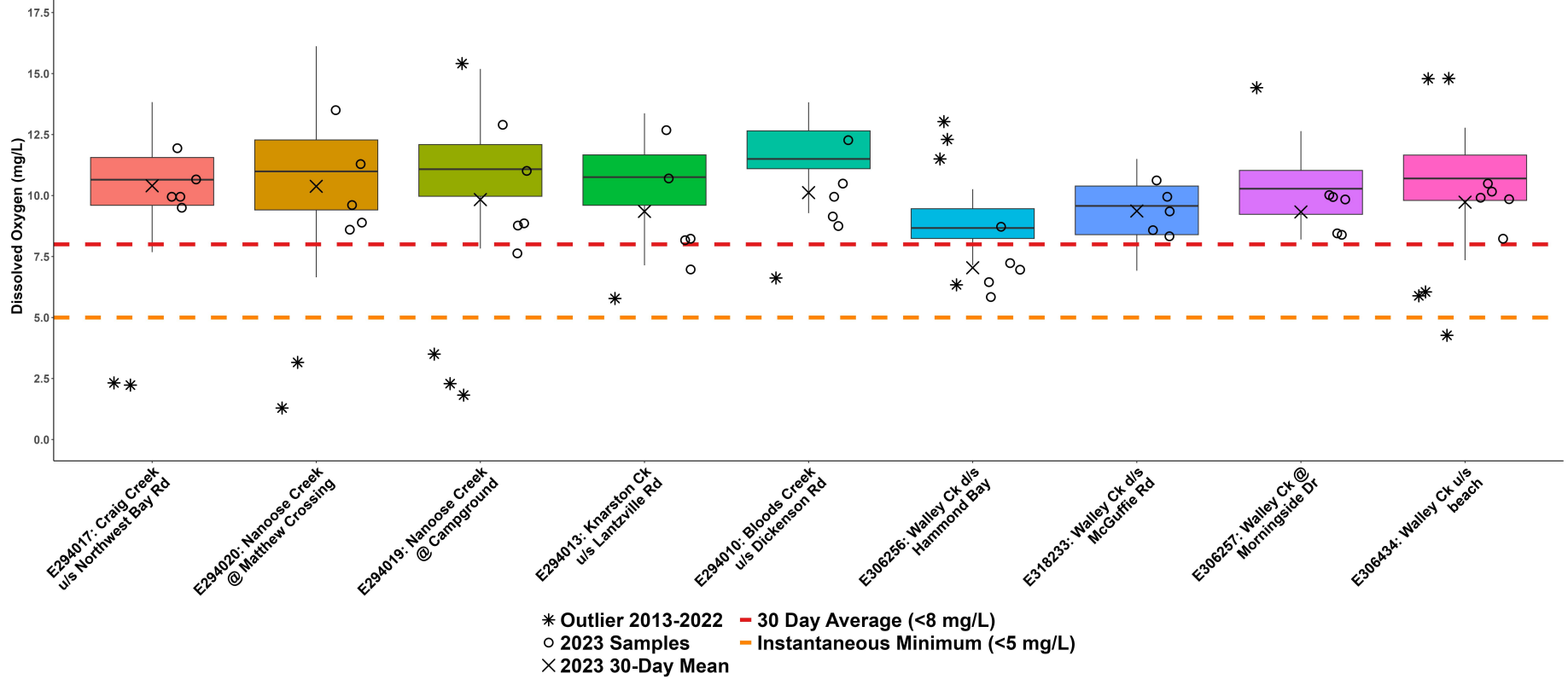
WR5-1b: South Wellington to Nanoose Fall Turbidity



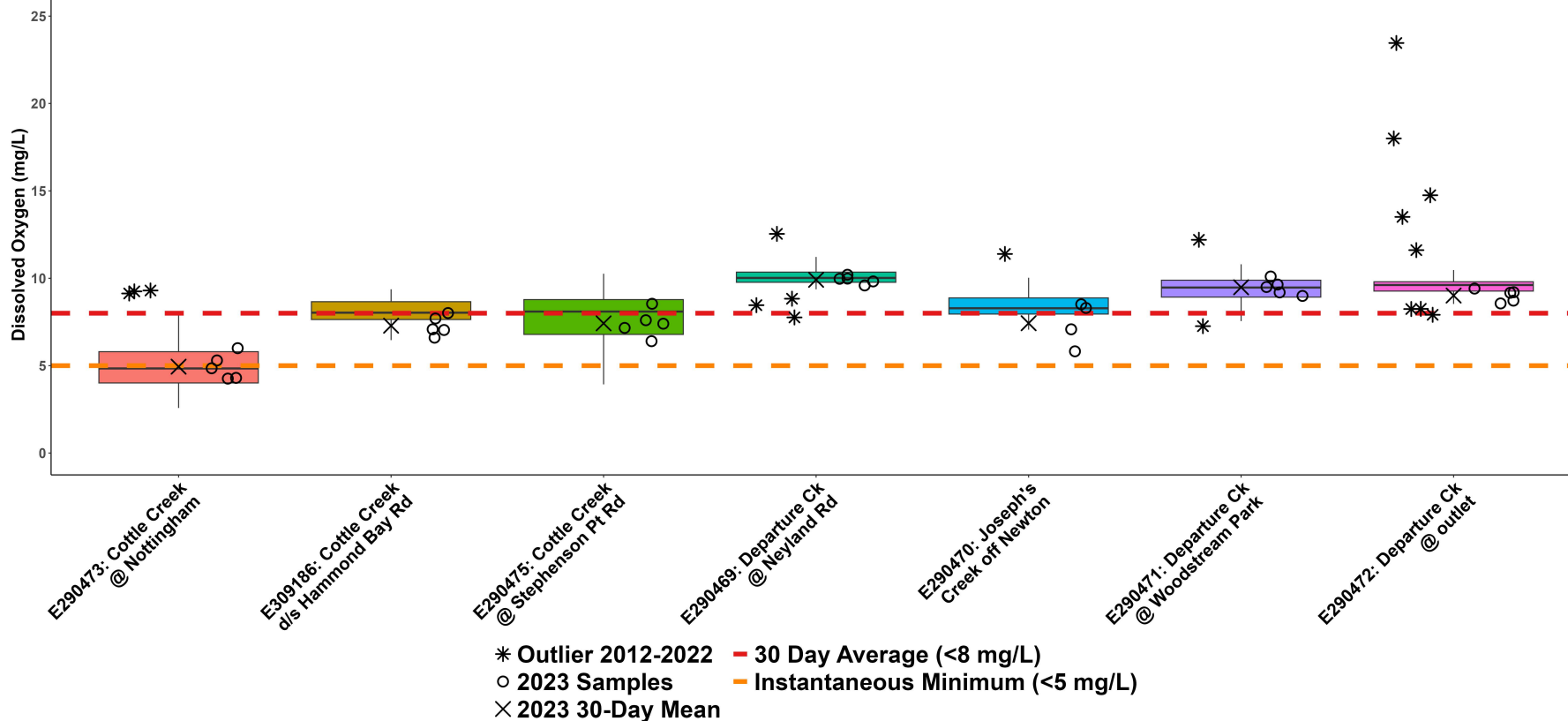
WR5-1a: South Wellington to Nanoose Summer Dissolved Oxygen



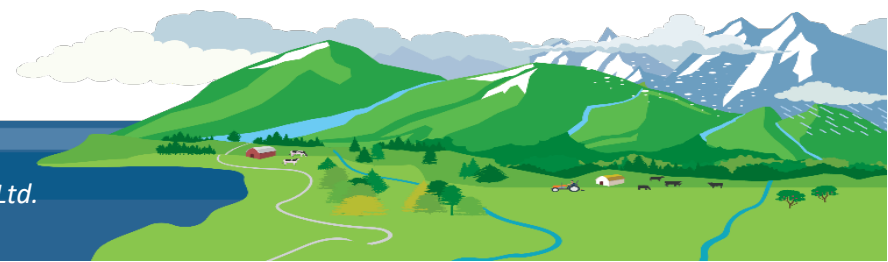
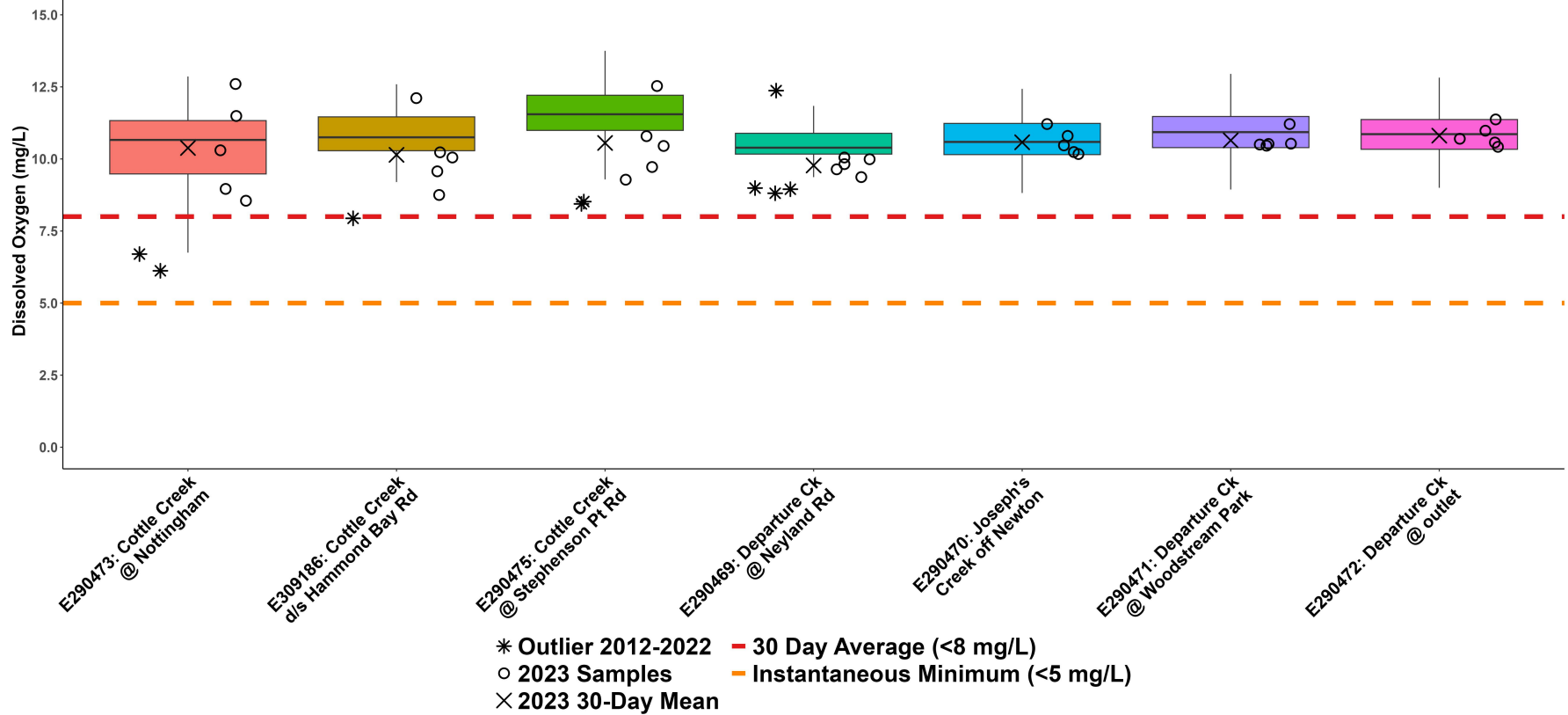
WR5-1a: South Wellington to Nanoose Fall Dissolved Oxygen



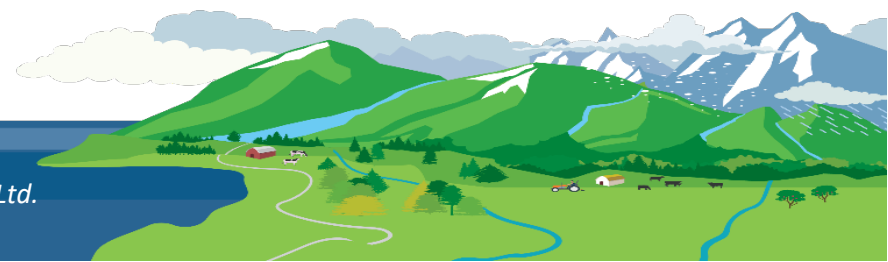
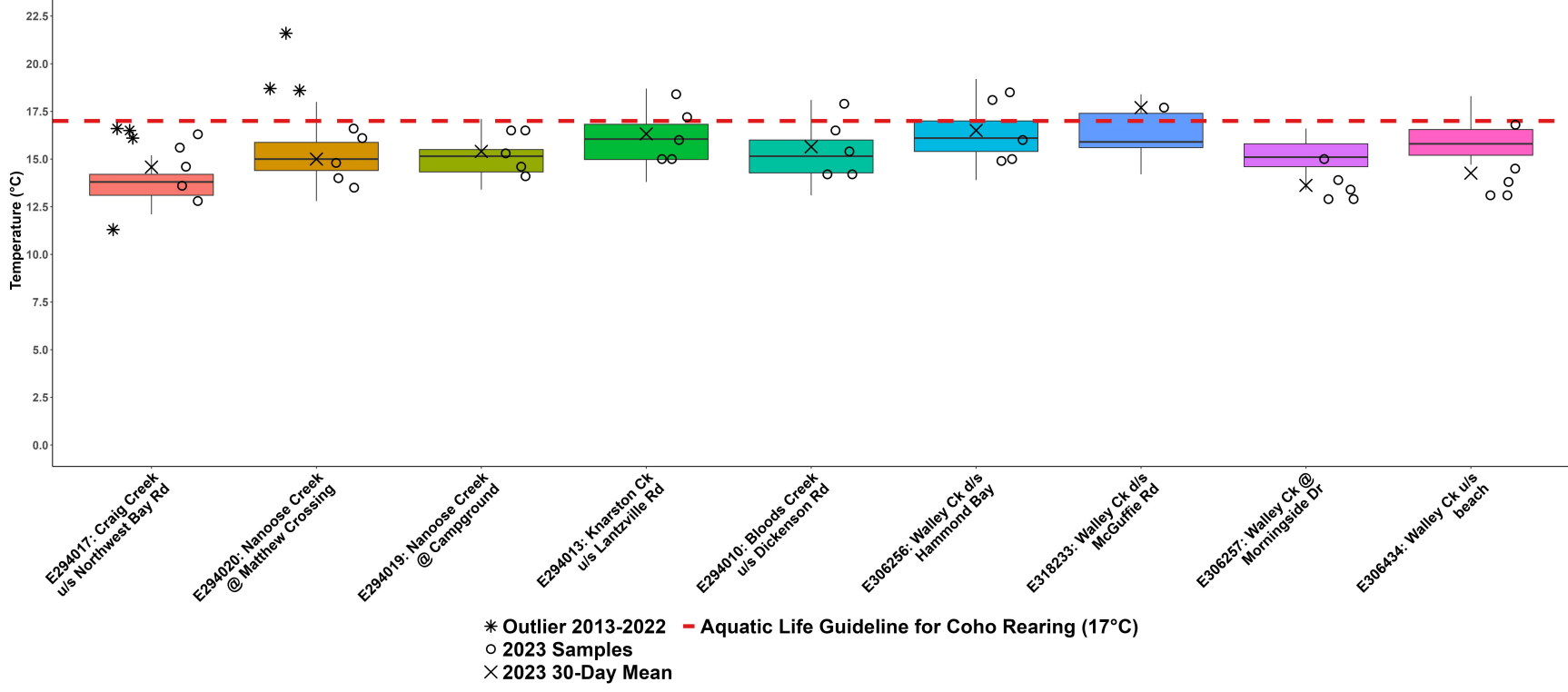
WR5-1b: South Wellington to Nanoose Summer Dissolved Oxygen



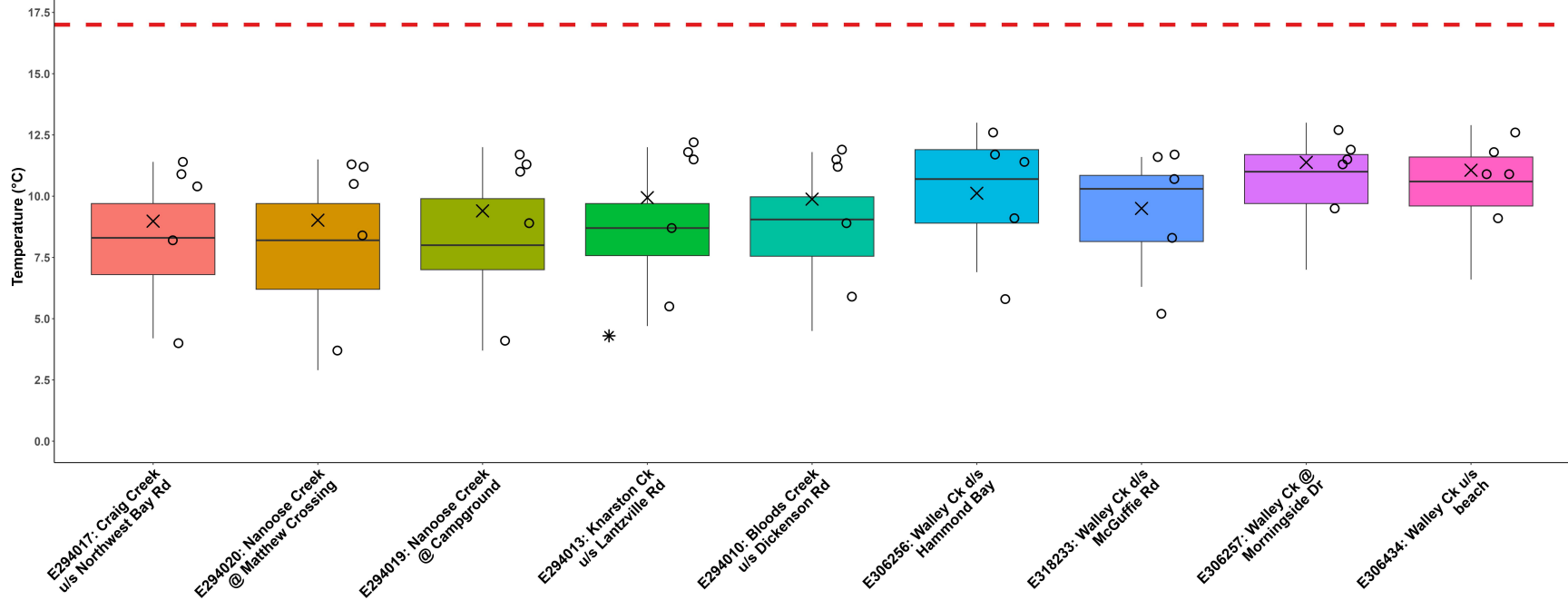
WR5-1b: South Wellington to Nanoose Fall Dissolved Oxygen



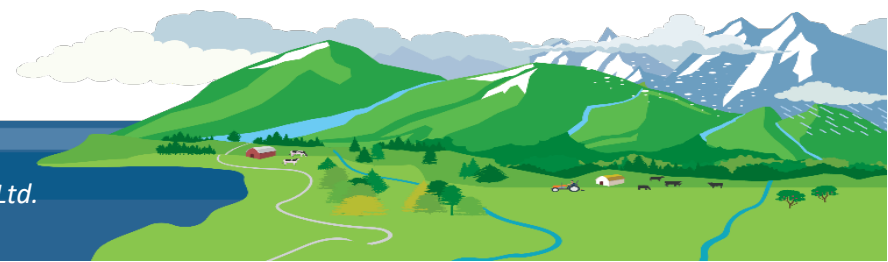
WR5-1a: South Wellington to Nanoose Summer Temperature



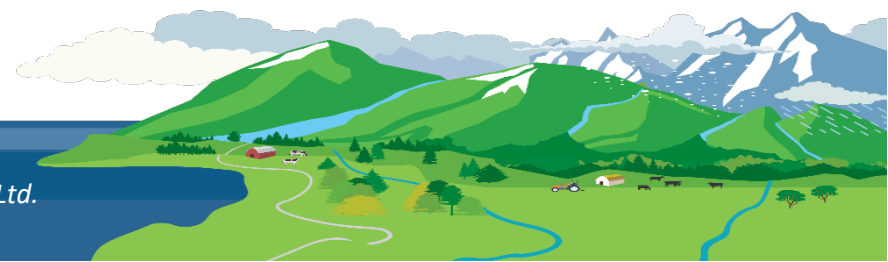
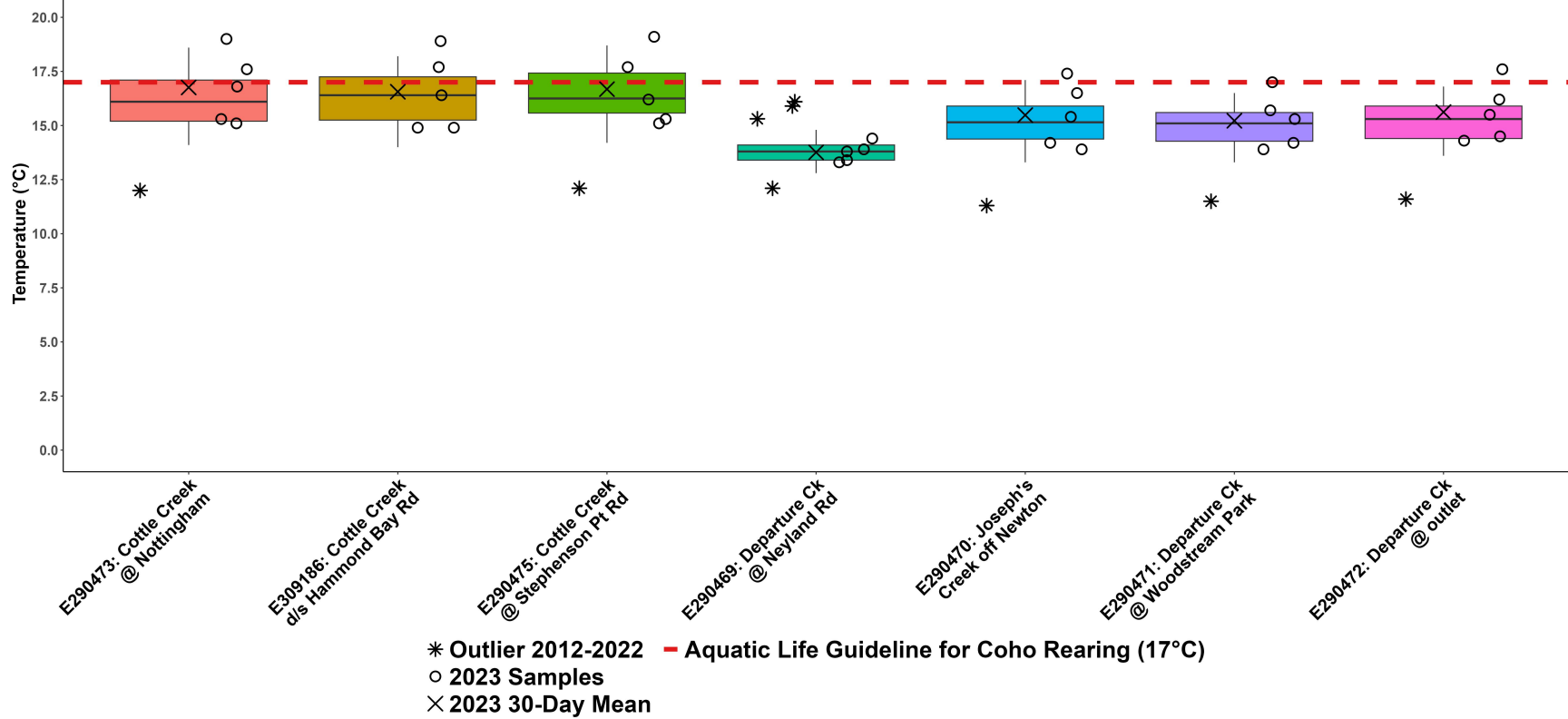
WR5-1a: South Wellington to Nanoose Fall Temperature



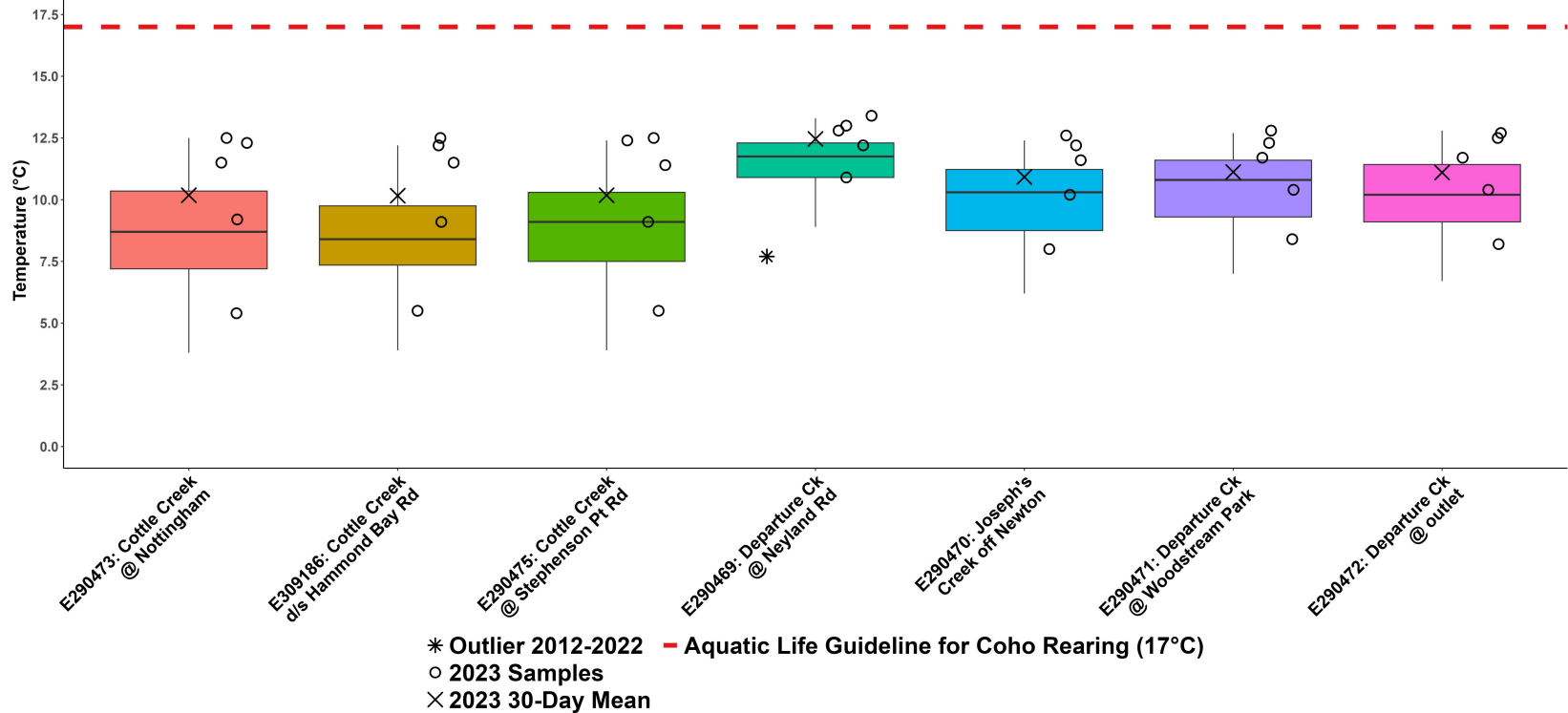
* Outlier 2013-2022 - Aquatic Life Guideline for Coho Rearing (17°C)
 ○ 2023 Samples
 × 2023 30-Day Mean



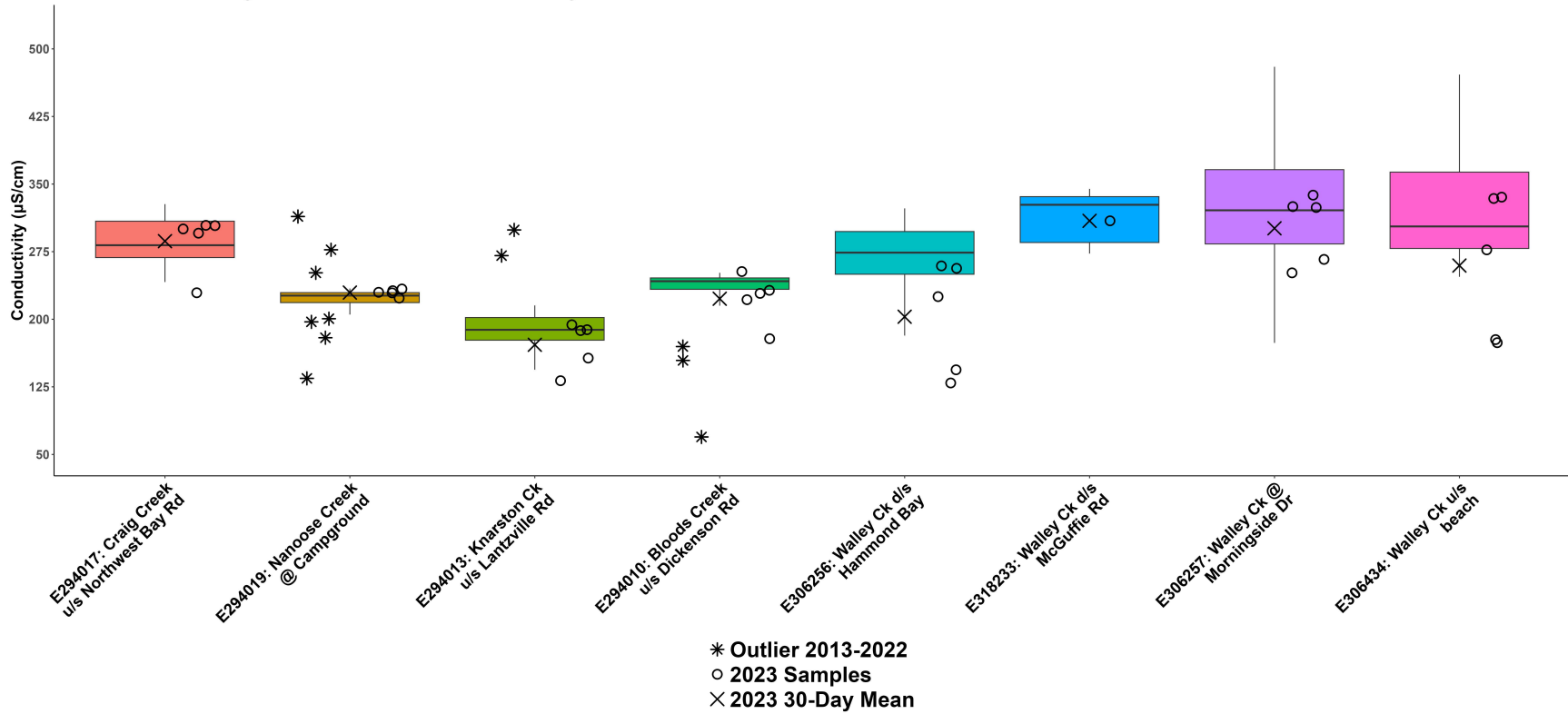
WR5-1b: South Wellington to Nanoose Summer Temperature



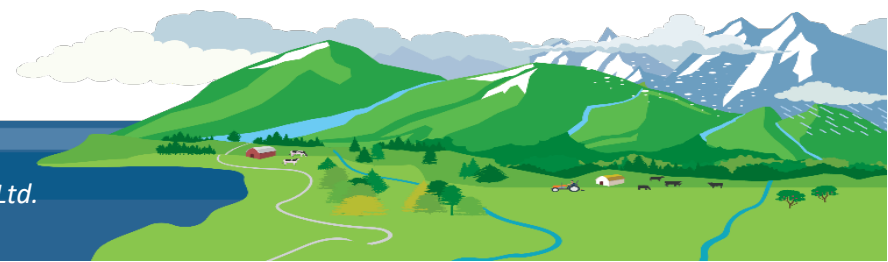
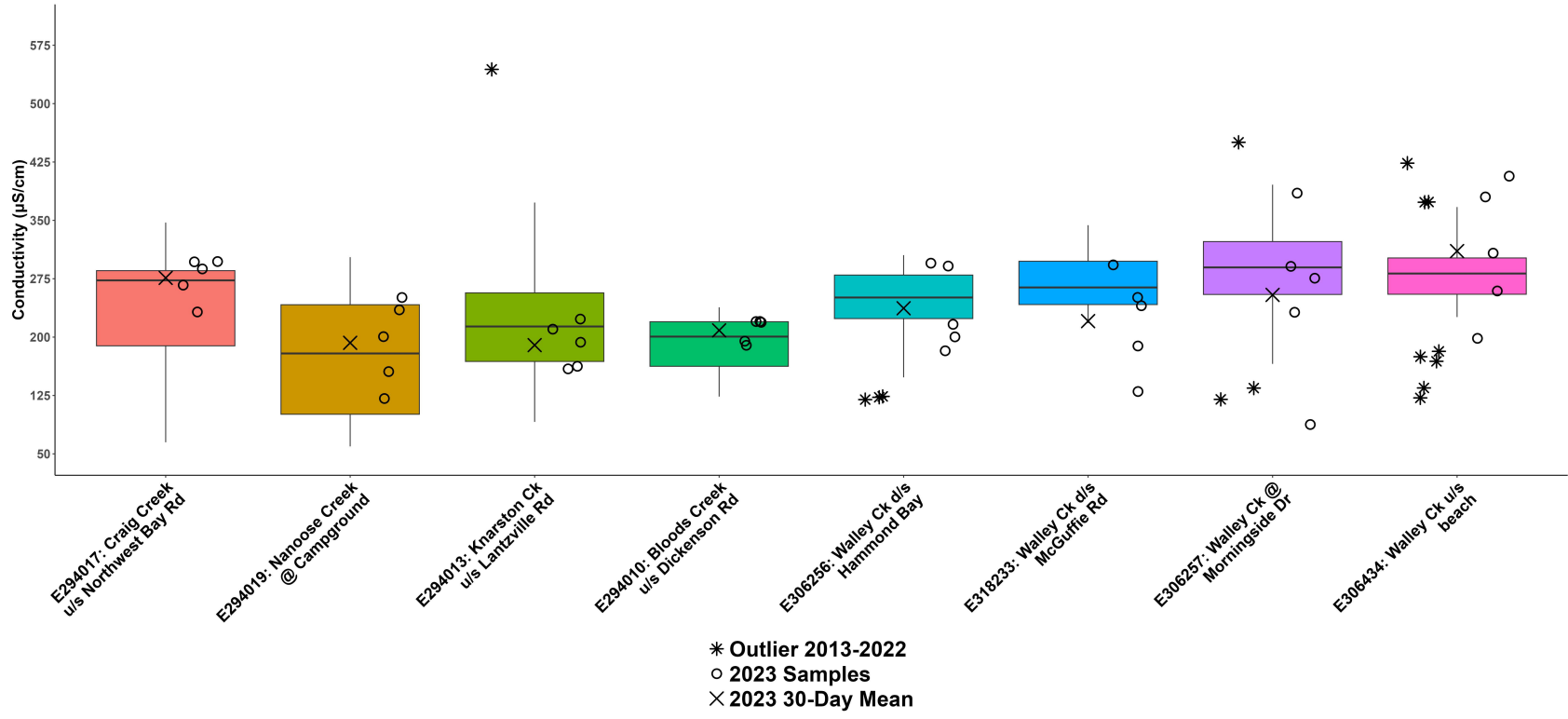
WR5-1b: South Wellington to Nanoose Fall Temperature



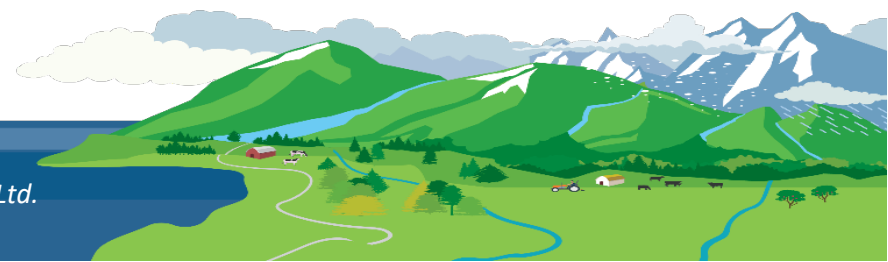
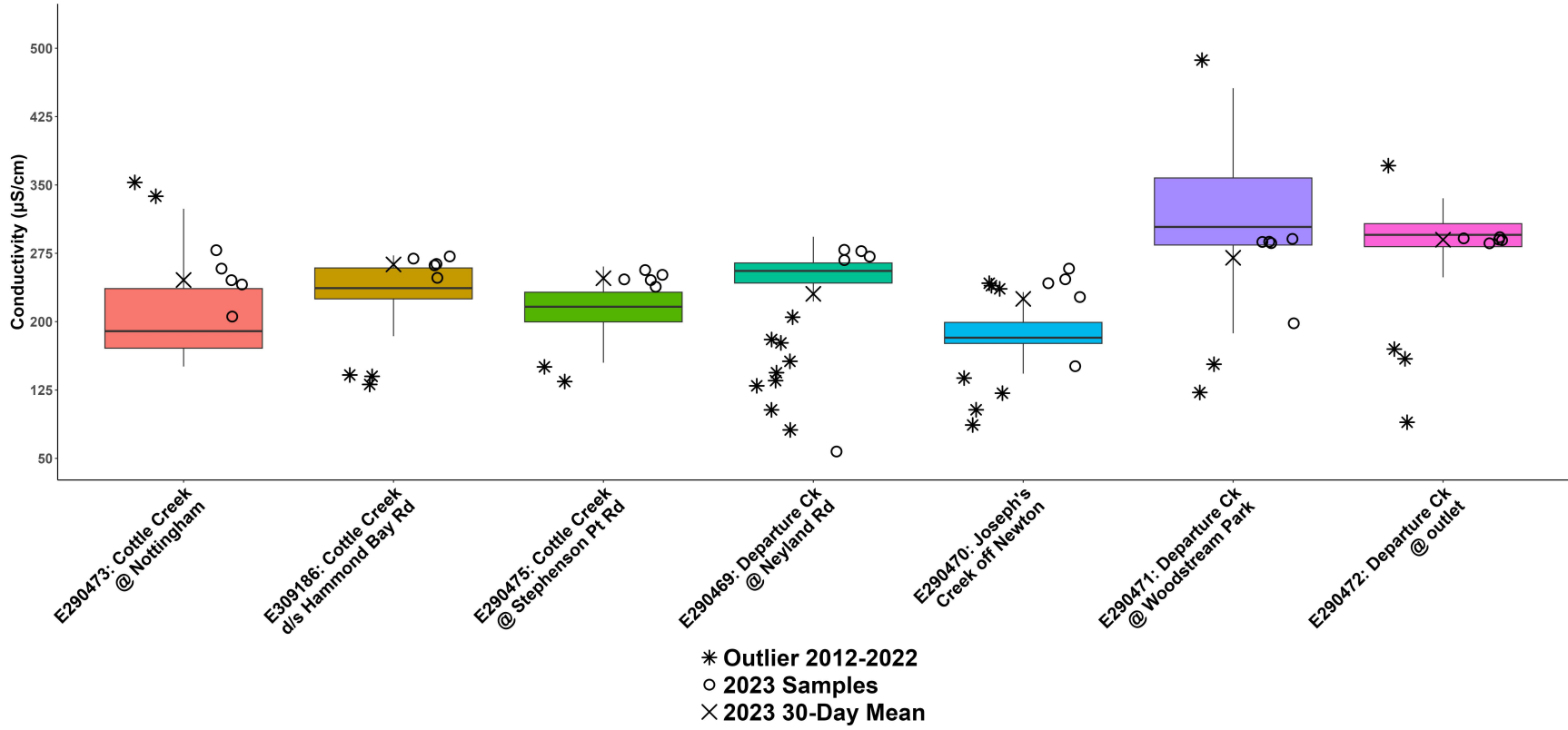
WR5-1a: South Wellington to Nanoose Summer Conductivity



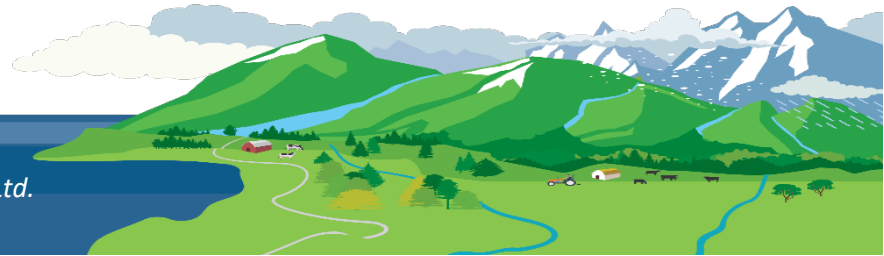
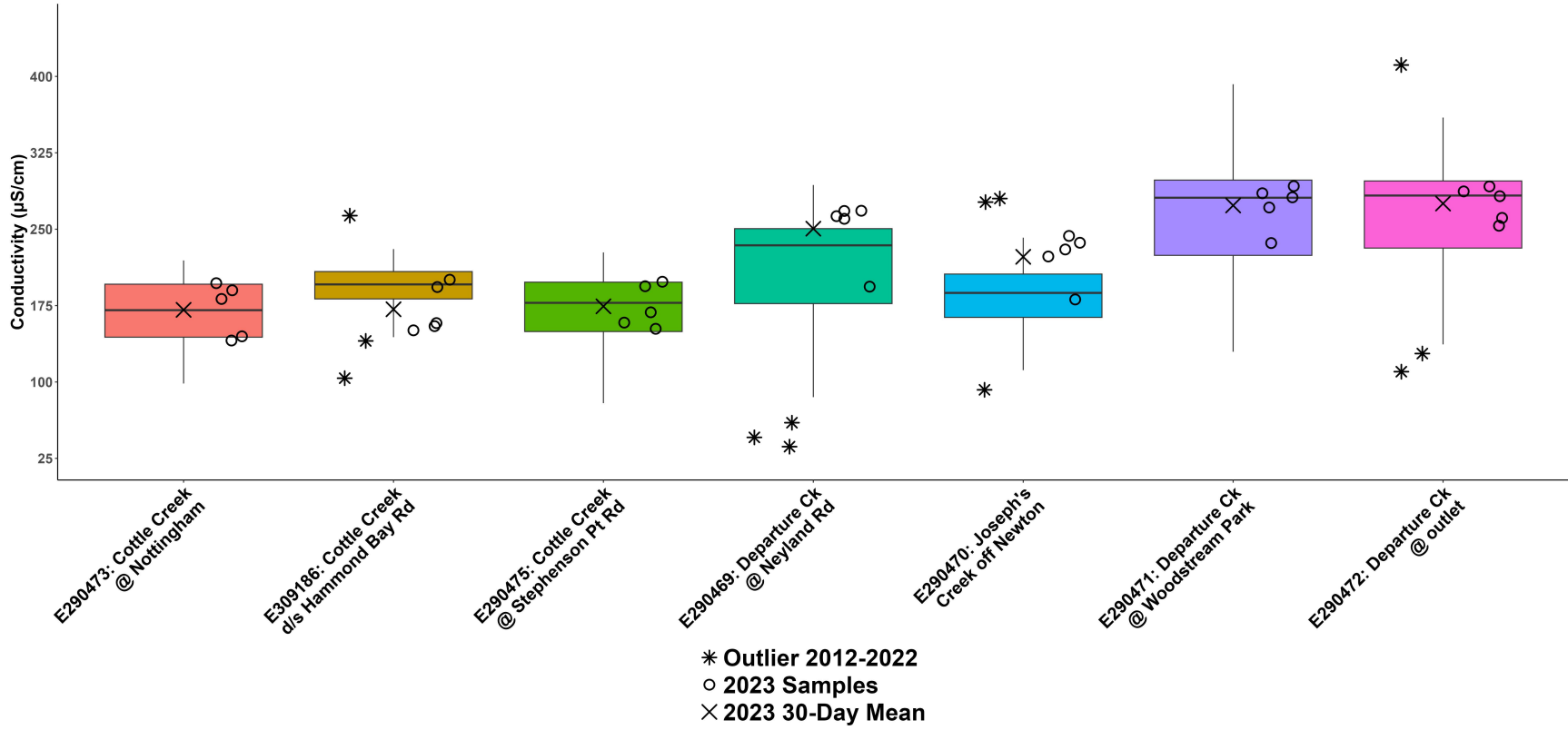
WR5-1a: South Wellington to Nanoose Fall Conductivity

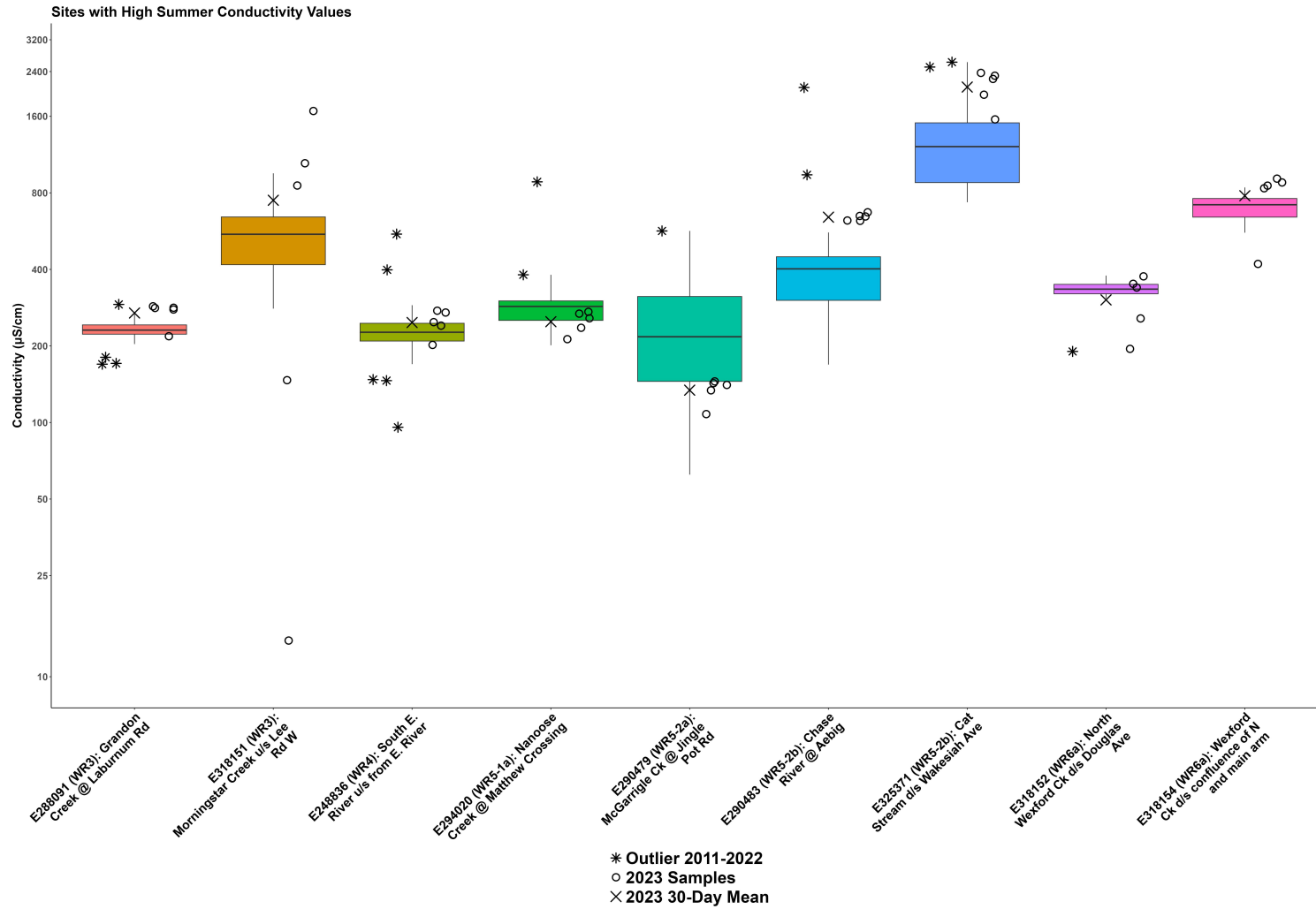


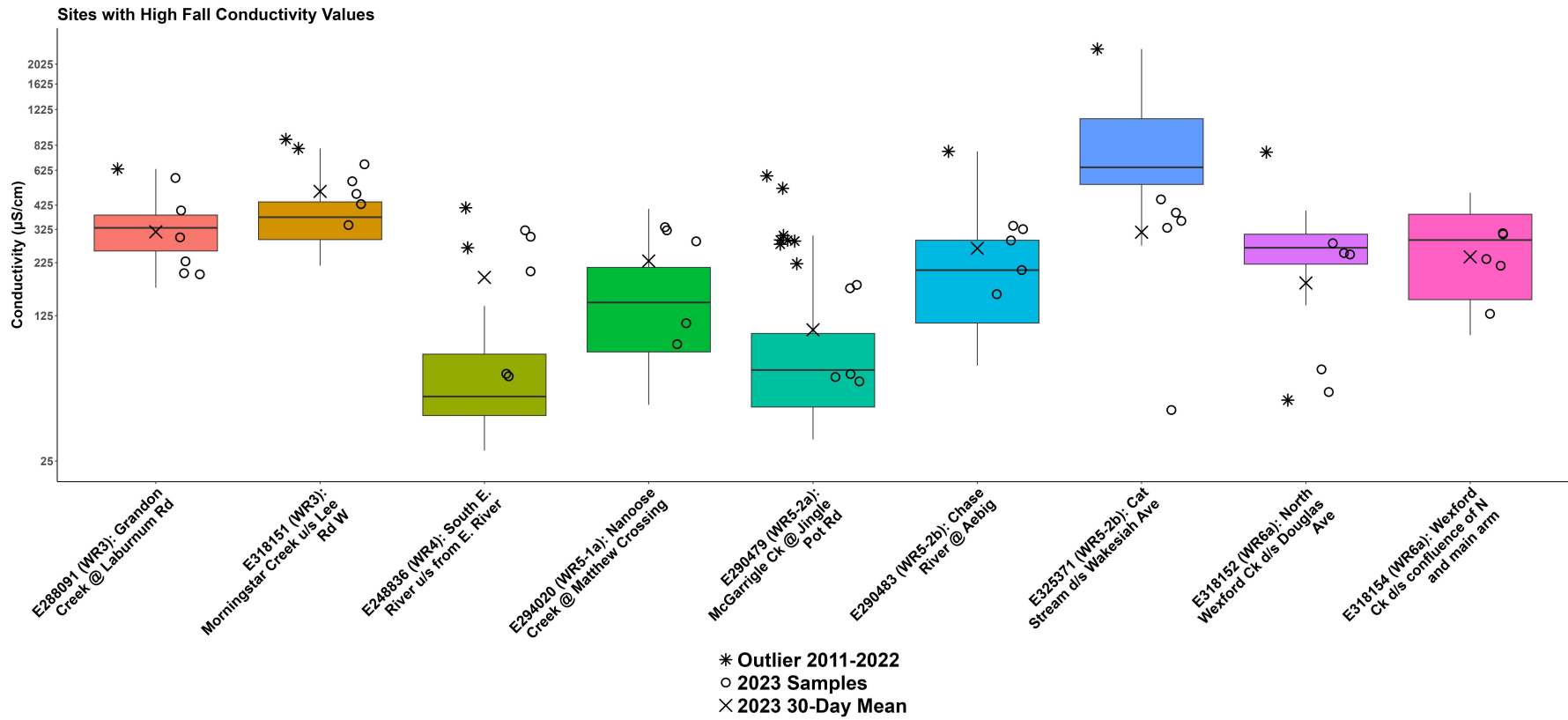
WR5-1b: South Wellington to Nanoose Summer Conductivity



WR5-1b: South Wellington to Nanoose Fall Conductivity









**MVIHES Nanoose Group
2023 Monitoring Sites**

REGIONAL DISTRICT OF NANAIMO

Status	Community Park
Active	Regional Park
Not Active	Provincial Park
Watercourse (approximate location)	2022 Air Photo

0 500 1,000 2,000 Meters

July 2023

N



**Walley Creek Streamkeepers
2023 Monitoring Sites**

REGIONAL DISTRICT OF NANAIMO

Status

- Active
- Not Active
- Watercourse (approximate location)

2022 Air Photo

0 100 200 400 Meters

July 2023

N



**Departure Creek Streamkeepers
2023 Monitoring Sites**

REGIONAL DISTRICT OF NANAIMO

Status

- Active
- Not Active
- Watercourse (approximate location)

2022 Air Photo

0 100 200 400 Meters

July 2023

N