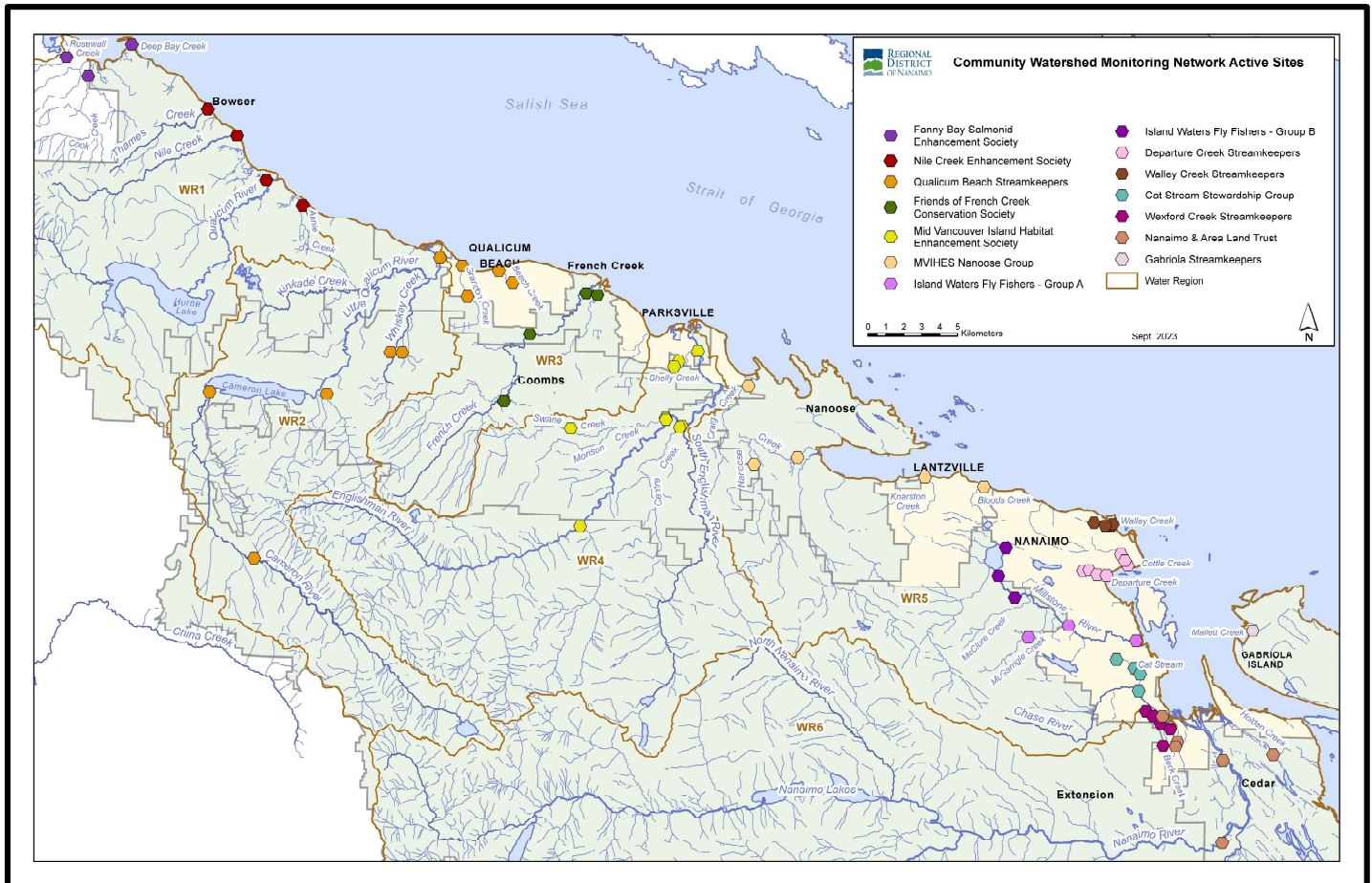


Community Watershed Monitoring Network 2023 Results by Water Region



Included in Water Region (WR) 4 package:

1. CWMN WR4 sample sites
2. How to interpret a box plot
3. Box Plot Comparison – 2023 data to previous years: *displayed by parameter (Turbidity, Dissolved Oxygen, Temperature, Conductivity) & sample period (summer, fall)*
4. Mid Vancouver Island Habitat Enhancement Society (MVIHES)



Water Region 4
sampled by:

Mid Vancouver Island Habitat Enhancement Society (MVIHES)



WR4 CWMN Sample Sites:

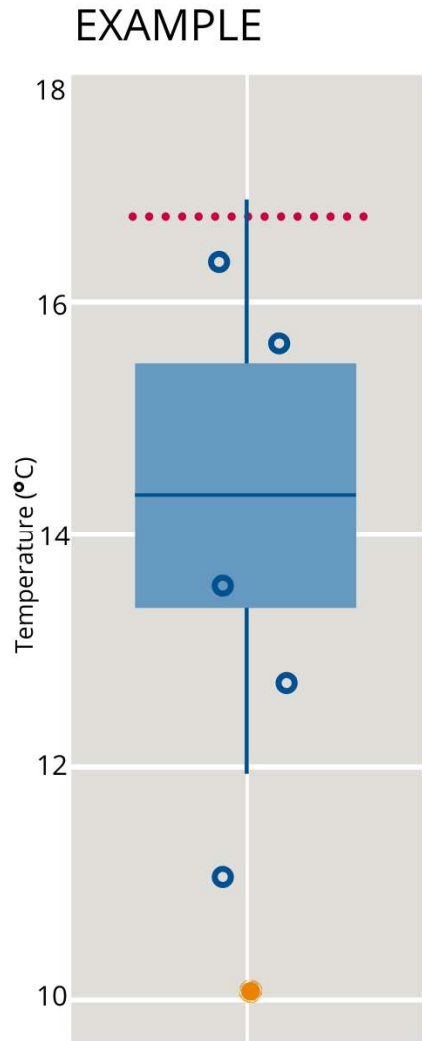
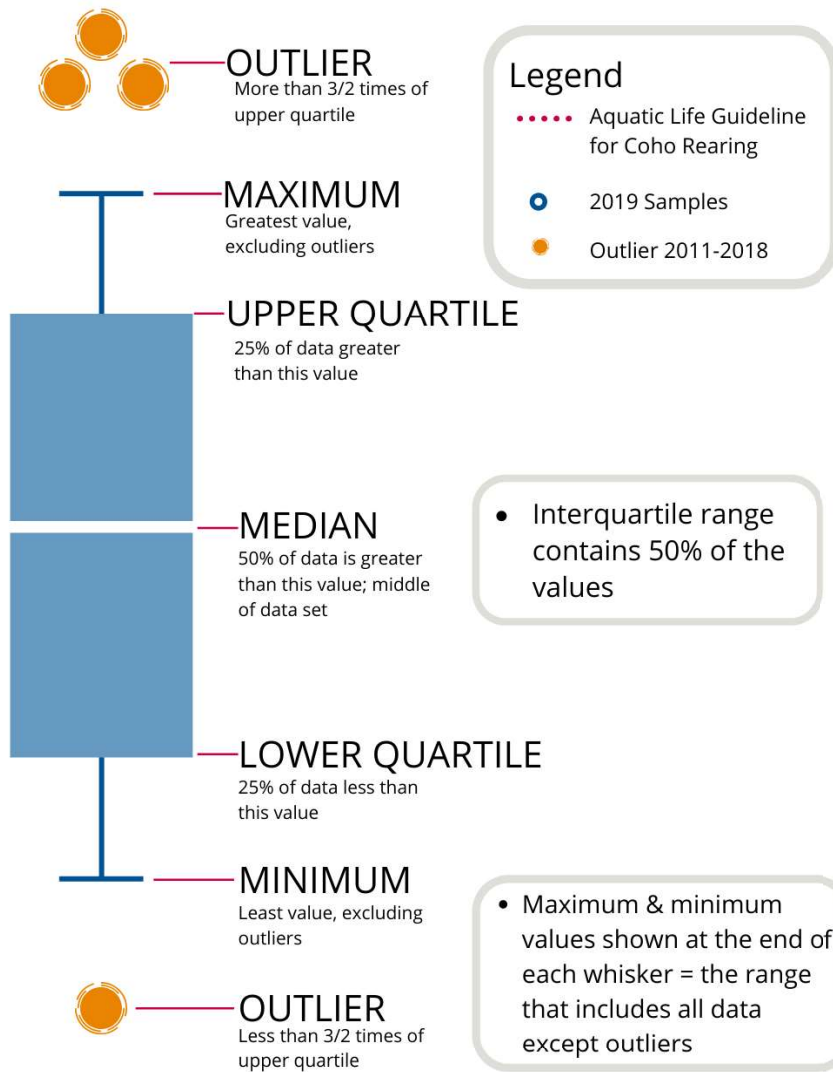
The table below shows the sites monitored by each of the streamkeeper organizations, as well as the number of years and which years a site was sampled. The number of years is important to keep in mind when interpreting the box plots as the plot for each site may contain a slightly different temporal range.

Group	EMS ID	Geographic Description	Years Sampled	Years Monitored
MVIHES	E299852	Centre Creek, just upstream of the confluence with S Englishman	10	2014 – present
MVIHES	E248836	South Englishman River u/s from Englishman River	13	2011 – present
MVIHES	E282969	Upper Englishman River u/s Centre Fork Creek	13	2011 – present
MVIHES	E248834	Englishman River u/s from Morison Creek	13	2011 – present
MVIHES	E308186	Swayne Creek d/s of Errington Road	10	2014 – present
MVIHES	E248835	Morison Creek u/s from Englishman River	13	2011 – present
MVIHES	E287131	Shelly Creek @ Hamilton Road	10	2014 – present
MVIHES	E290452	Shelly Creek at end of Blower Road	9.5	2014 – present*
MVIHES	0121580	Englishman River at Highway 19A	13	2011 – present

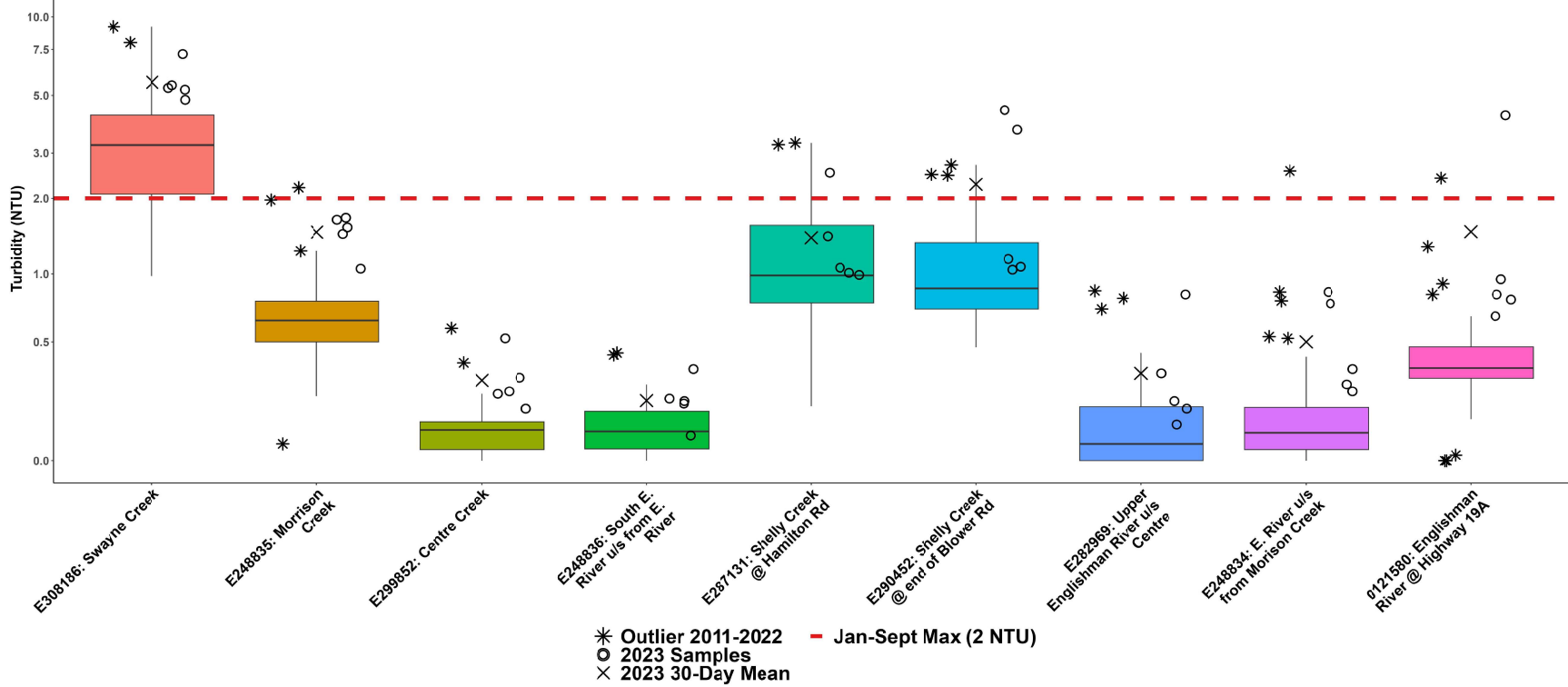
**Fall 2015 was not monitored to complete restoration work.*



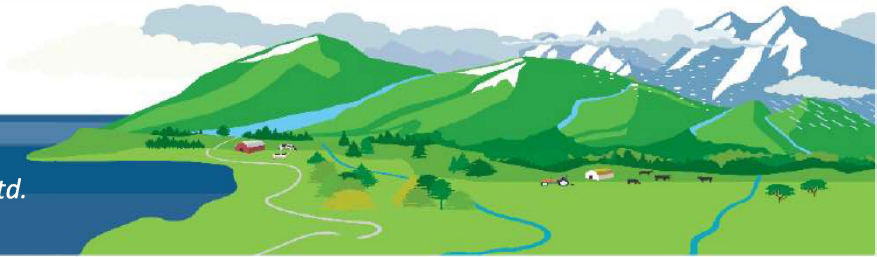
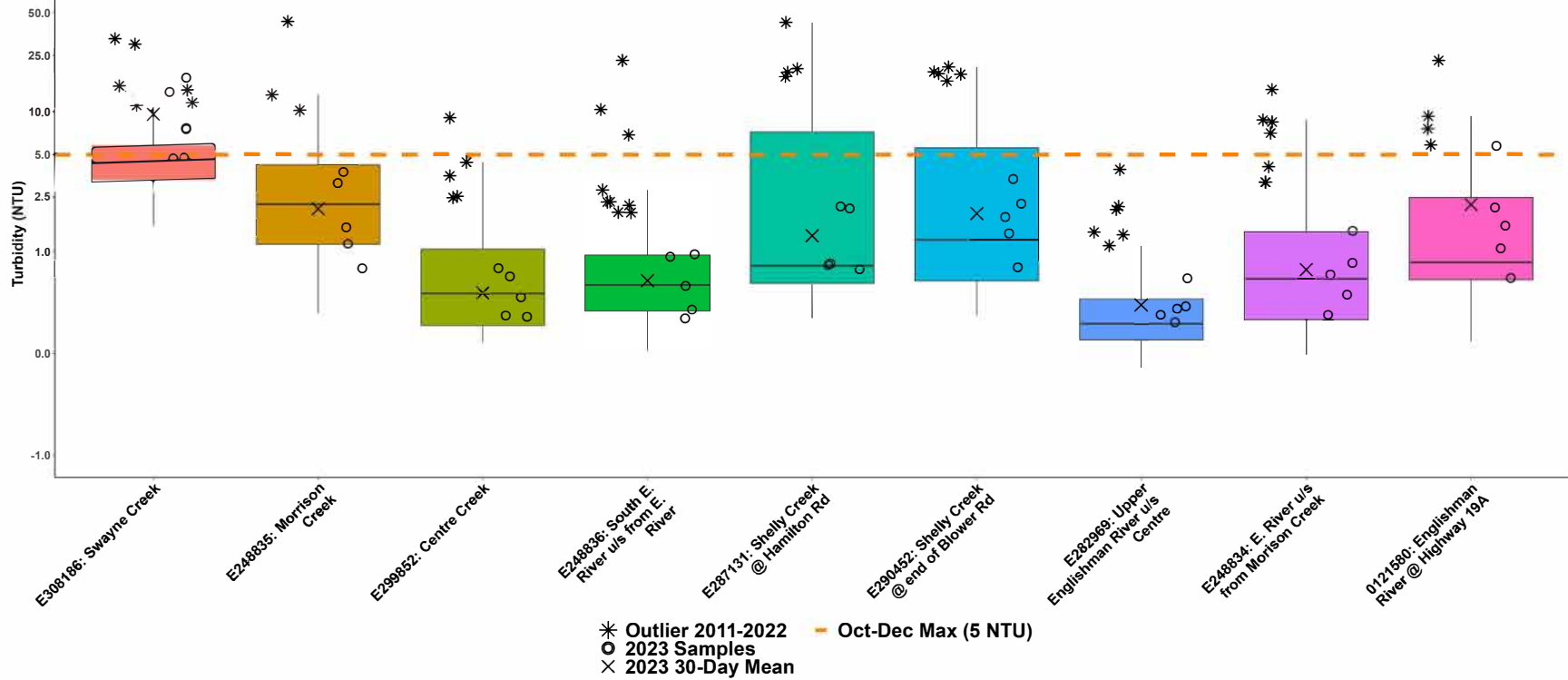
How to Interpret a Box Plot:



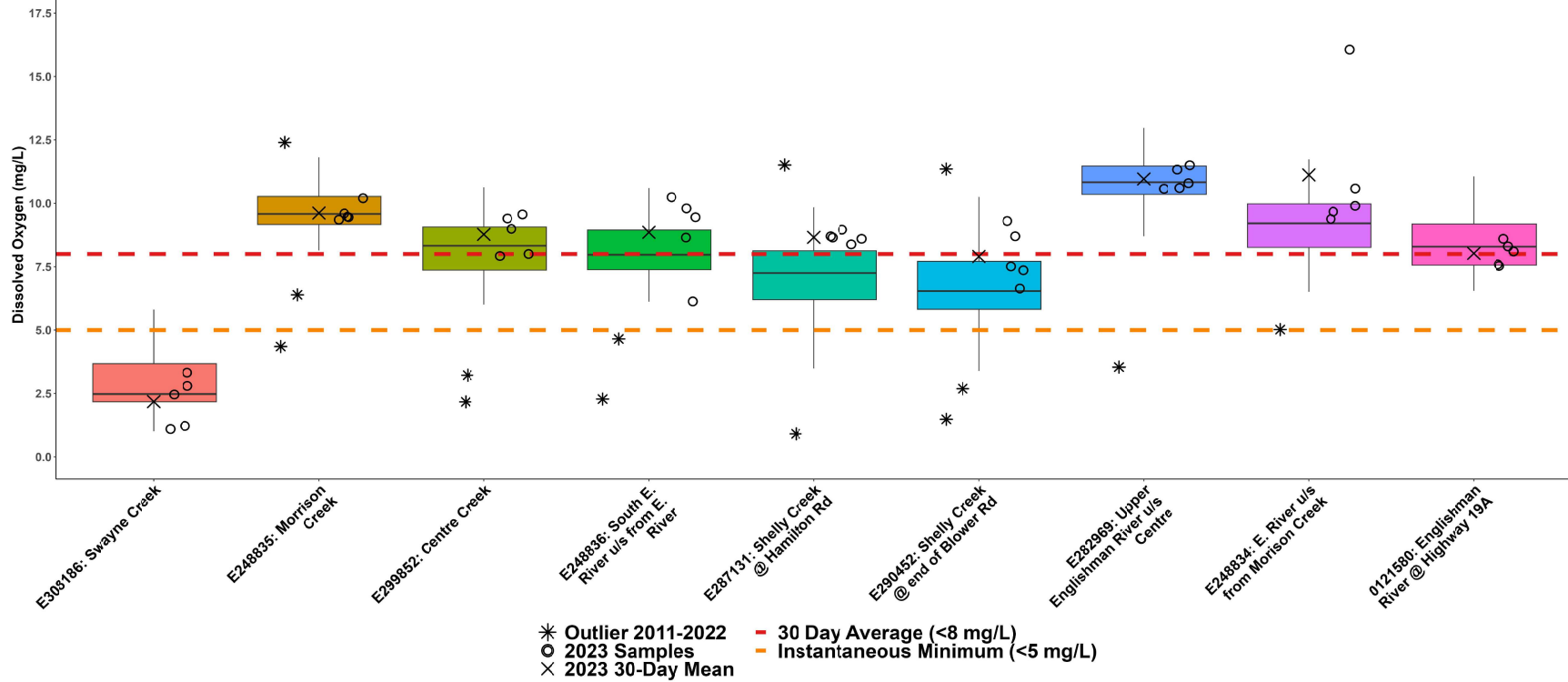
WR4: Englishman River Summer Turbidity



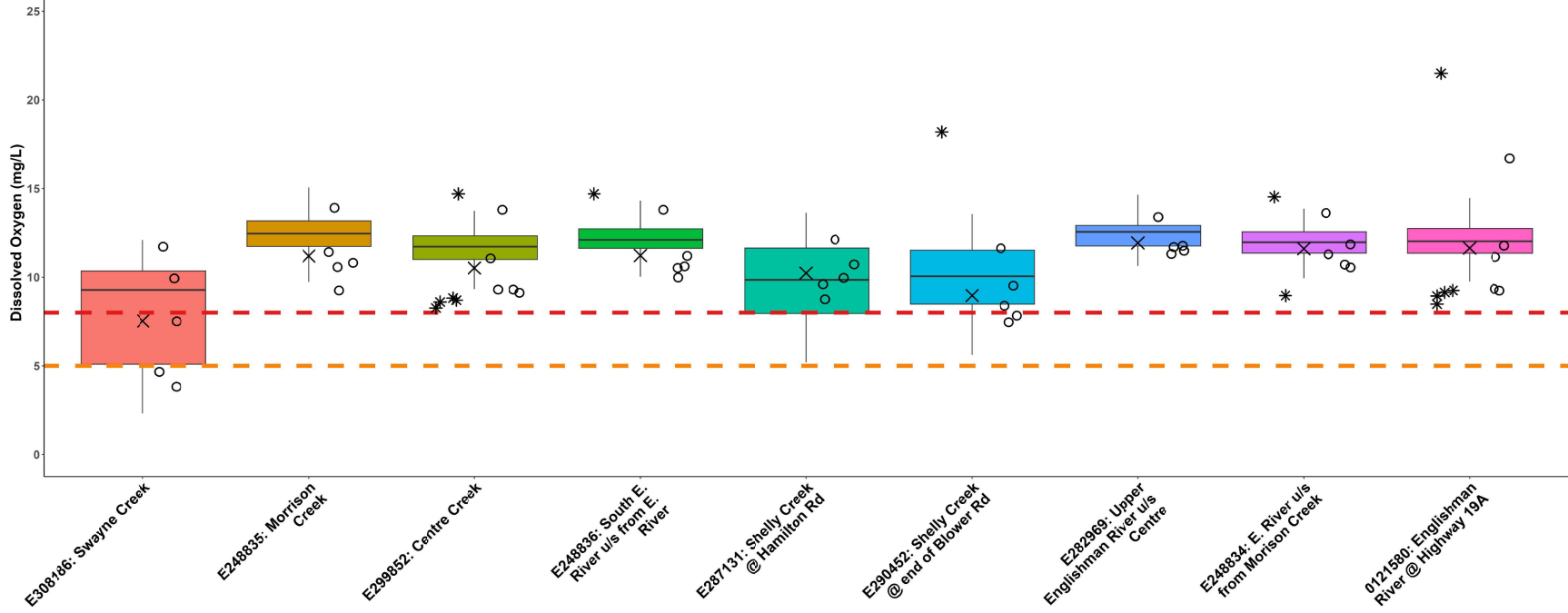
WR4: Englishman River Fall Turbidity



WR4: Englishman River Summer Dissolved Oxygen



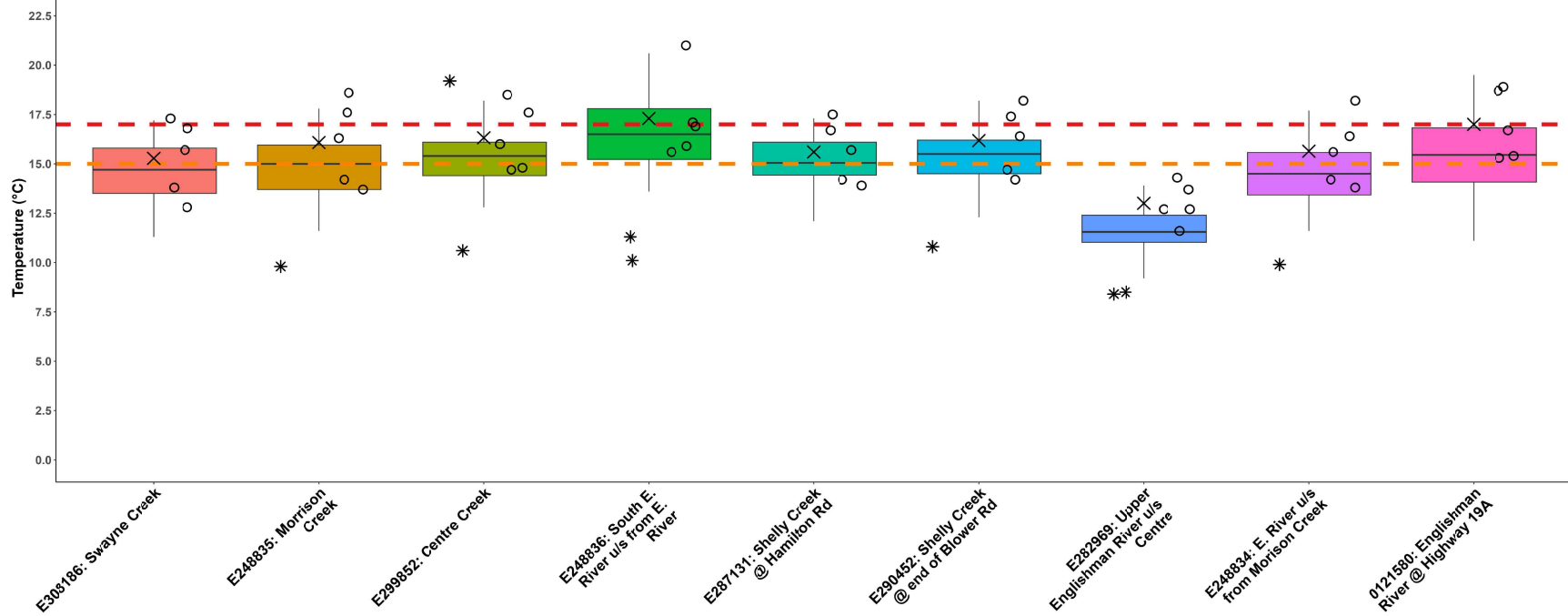
WR4: Englishman River Fall Dissolved Oxygen



* Outlier 2011-2022
 ○ 2023 Samples
 x 2023 30-Day Mean
 - - 30 Day Average (<8 mg/L)
 - - Instantaneous Minimum (<5 mg/L)



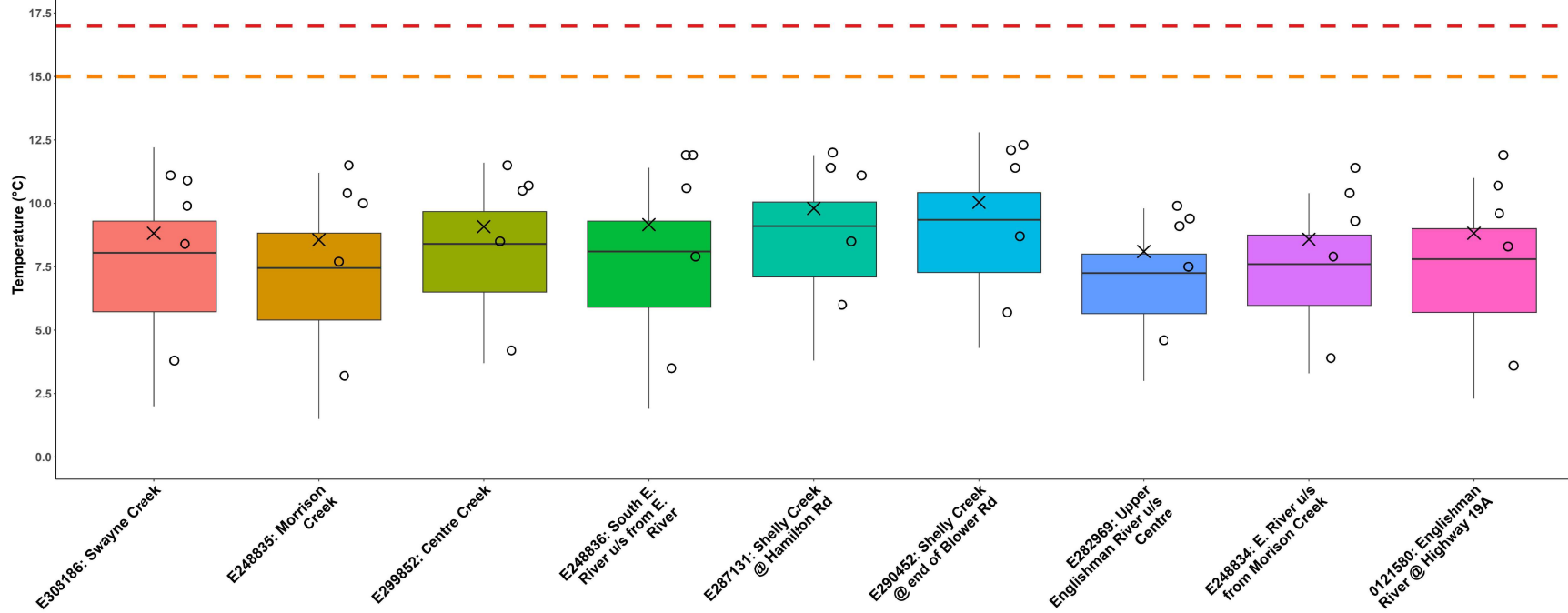
WR4: Englishman River Summer Temperature



* Outlier 2011-2022 - Aquatic Life Guideline for Coho Rearing (17°C)
 ○ 2023 Samples - Aesthetic Drinking Water Objective (15°C)
 × 2023 30-Day Mean



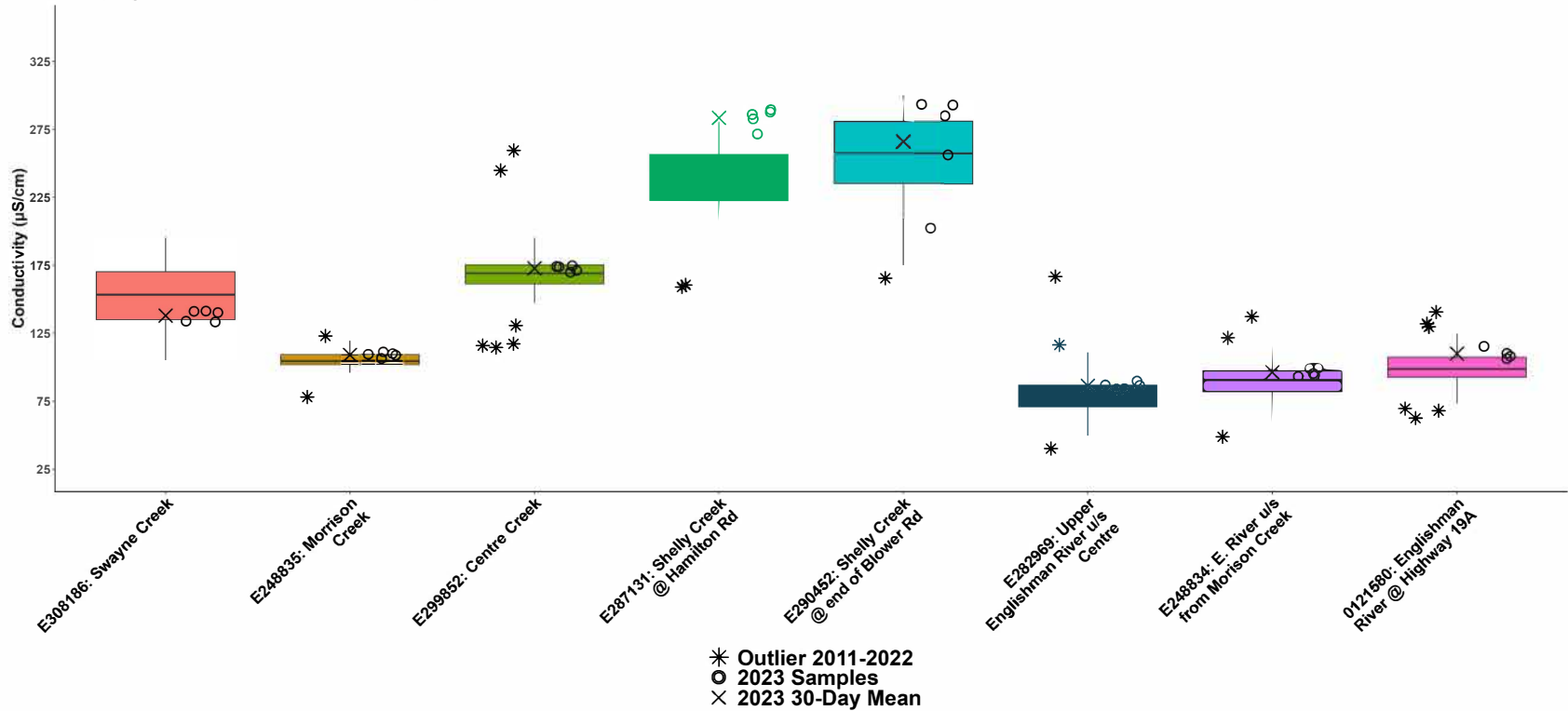
WR4: Englishman River Fall Temperature



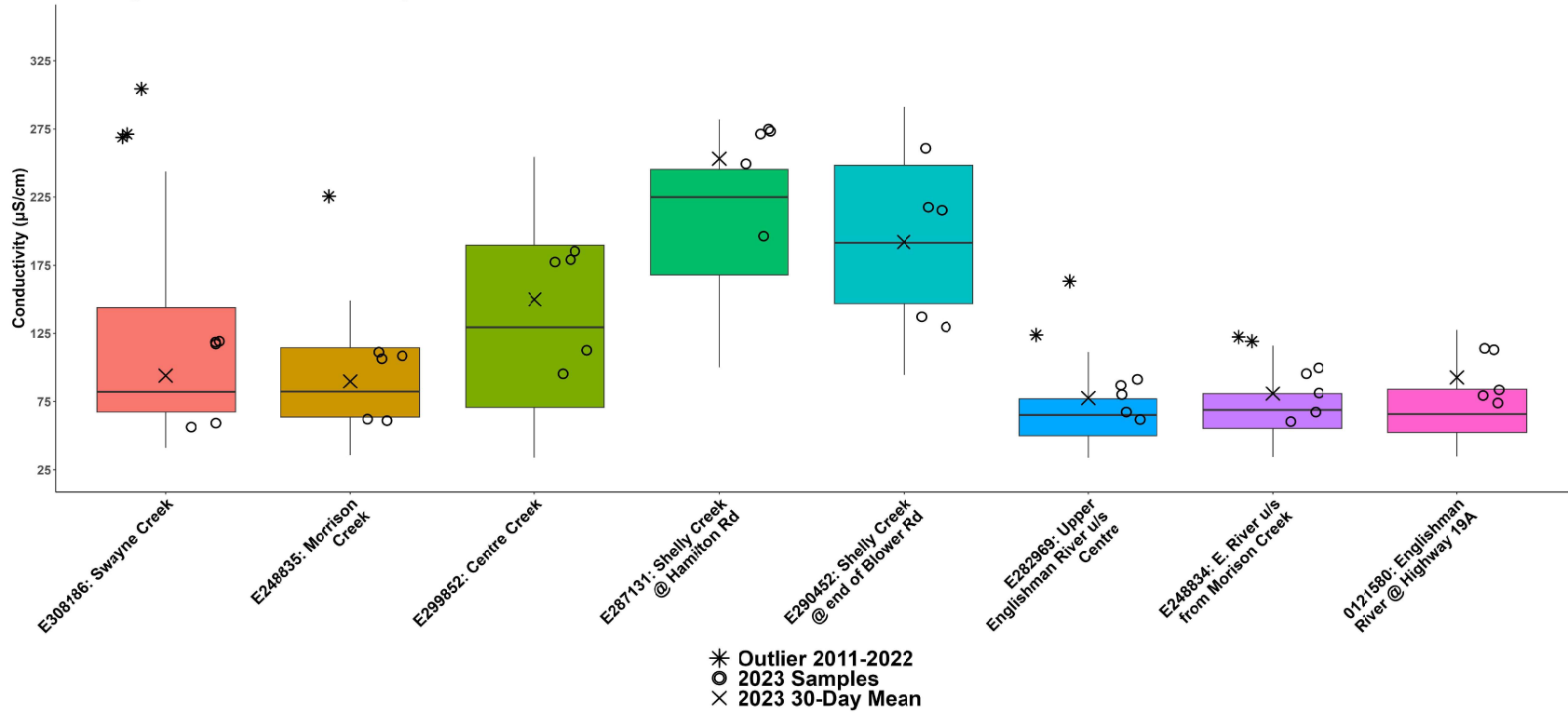
* Outlier 2011-2022
 ○ 2023 Samples
 X 2023 30-Day Mean
 - Aquatic Life Guideline for Coho Rearing (17°C)
 - Aesthetic Drinking Water Objective (15°C)

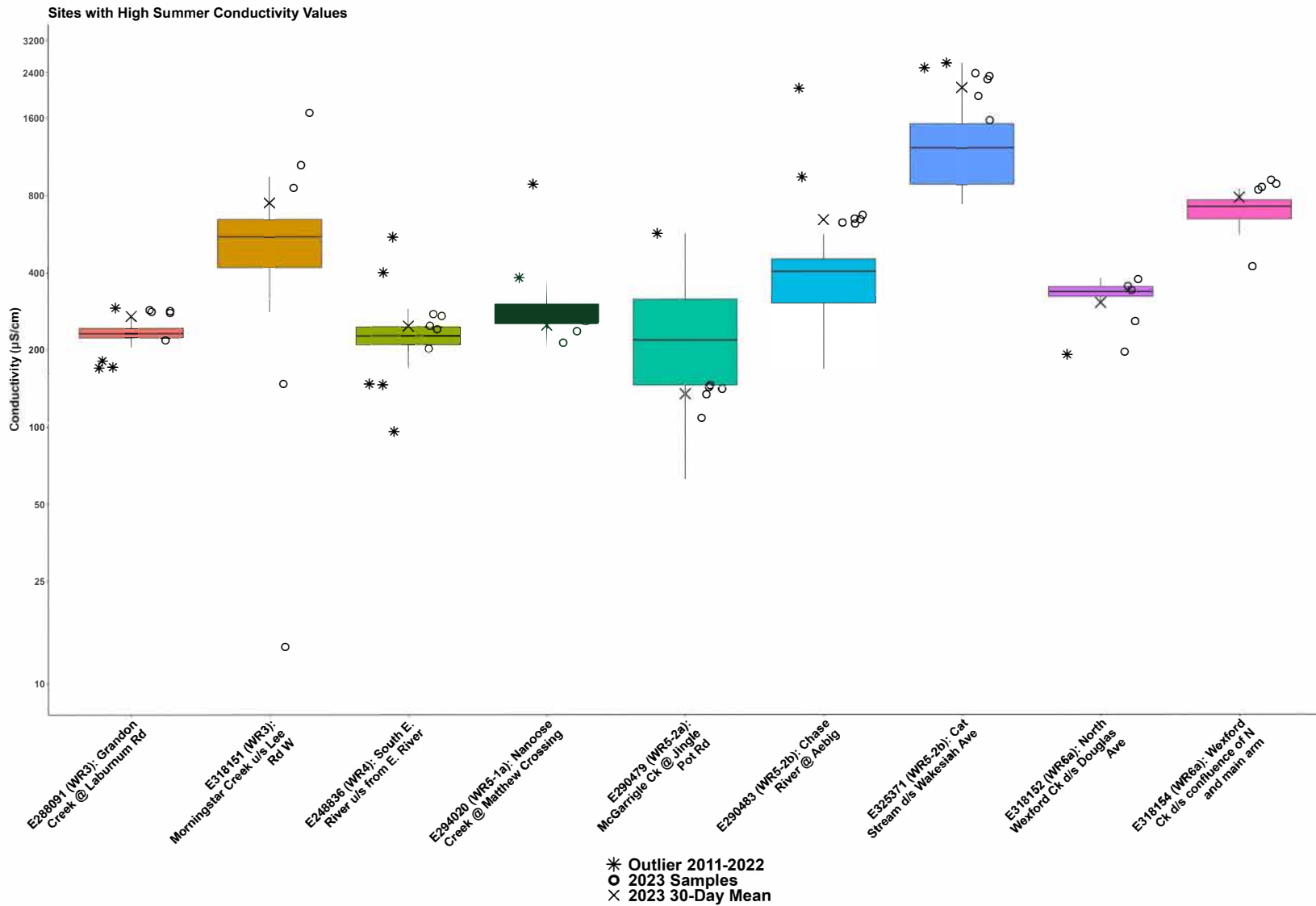


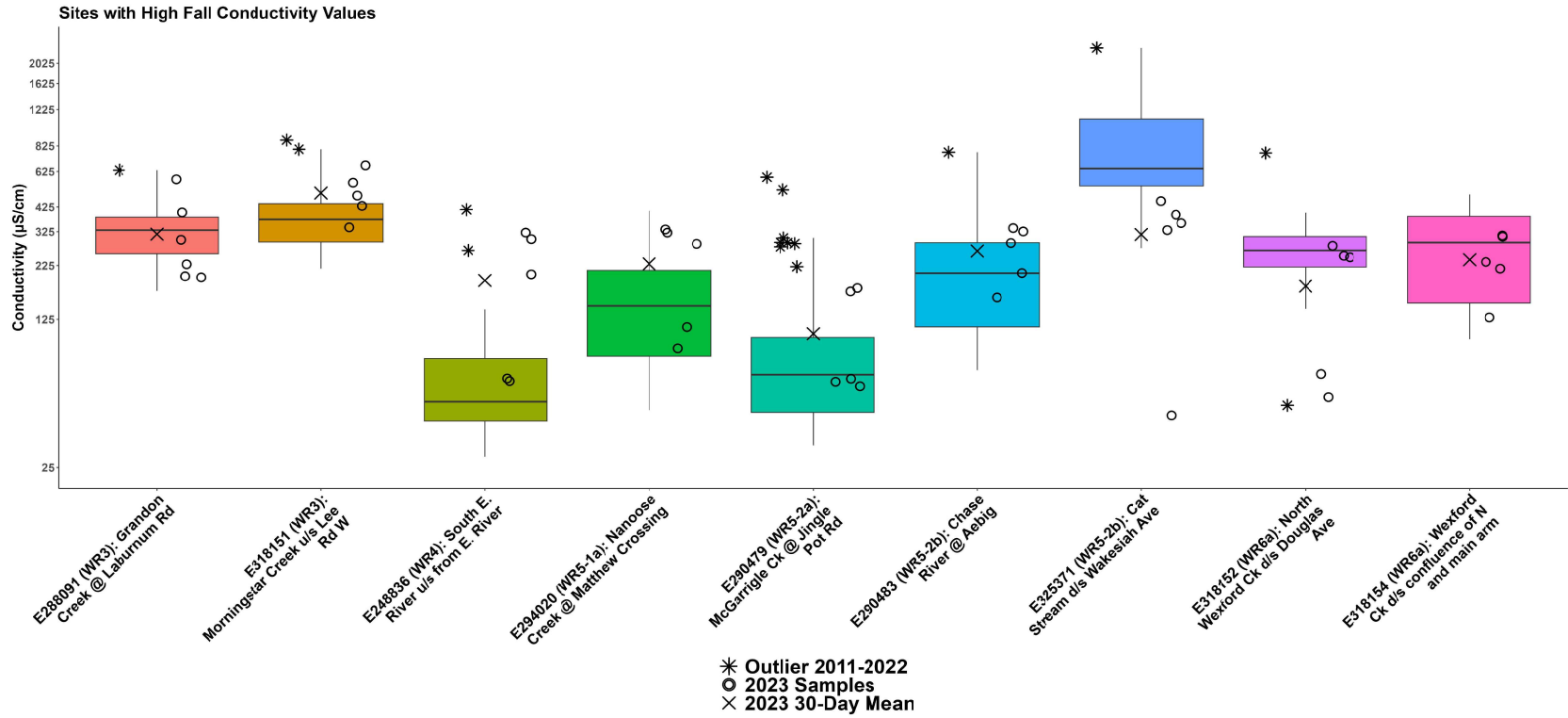
WR4: Englishman River Summer Conductivity

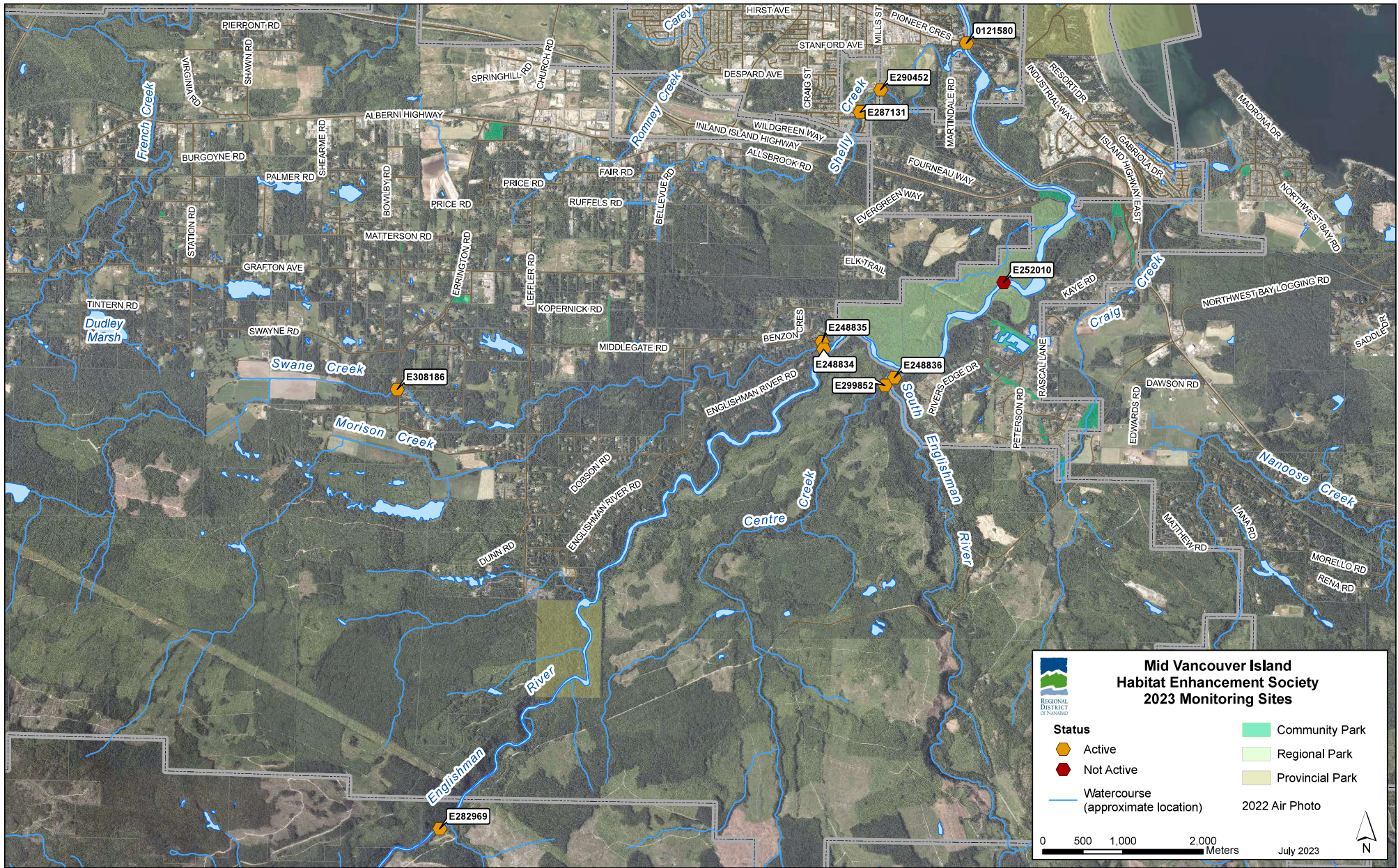


WR4: Englishman River Fall Conductivity









**Mid Vancouver Island
Habitat Enhancement Society
2023 Monitoring Sites**

REGIONAL DISTRICT OF VANCOUVER

Status

- Active
- Not Active
- Watercourse (approximate location)

Park Types

- Community Park
- Regional Park
- Provincial Park

2022 Air Photo

0 500 1,000 2,000 Meters

July 2023

N