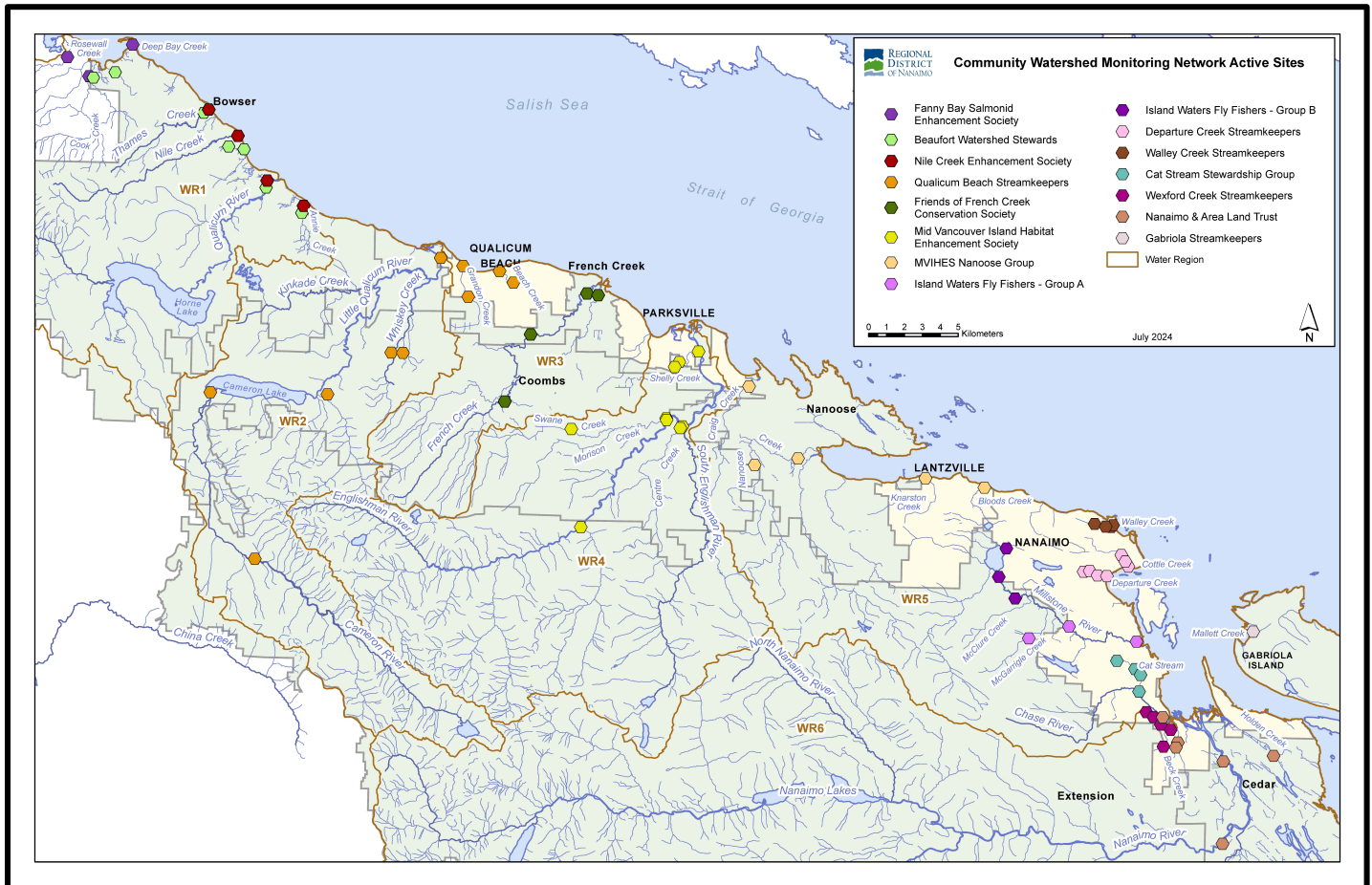


# Community Watershed Monitoring Network

## 2024 Results by Water Region



Included in Water Region (WR) 2 package:

1. CWMN WR2 sample sites
2. How to interpret a box plot
3. Box Plot Comparison – 2024 data to previous years: *displayed by parameter (Turbidity, Dissolved Oxygen, Temperature, Conductivity) & sample period (summer, fall)*
4. QBS CWMN map of sample sites



Water Region 2  
sampled by:

**Qualicum Beach Streamkeepers  
(QBS)**



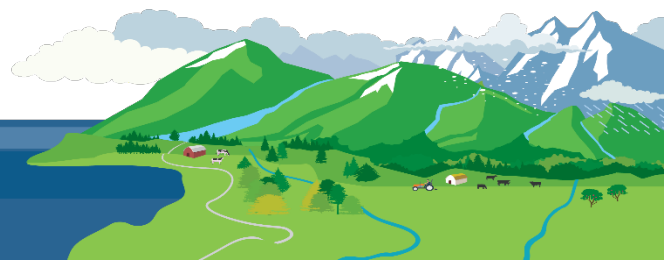
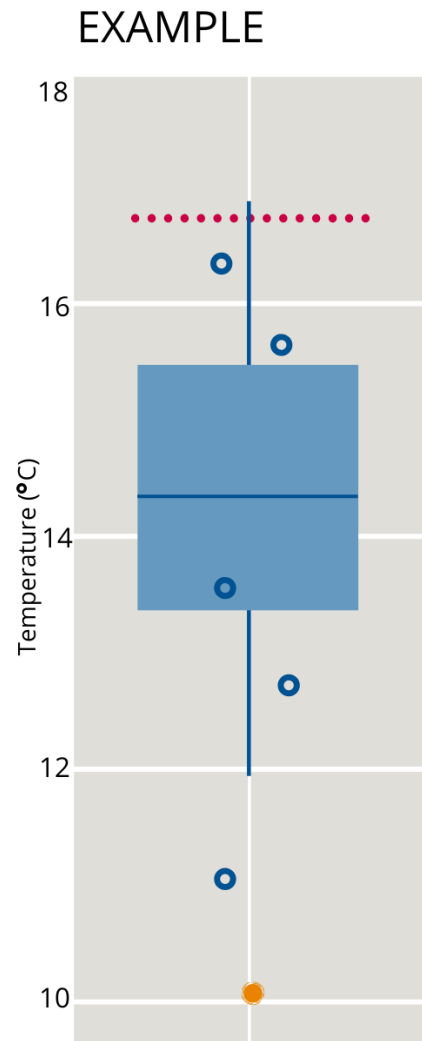
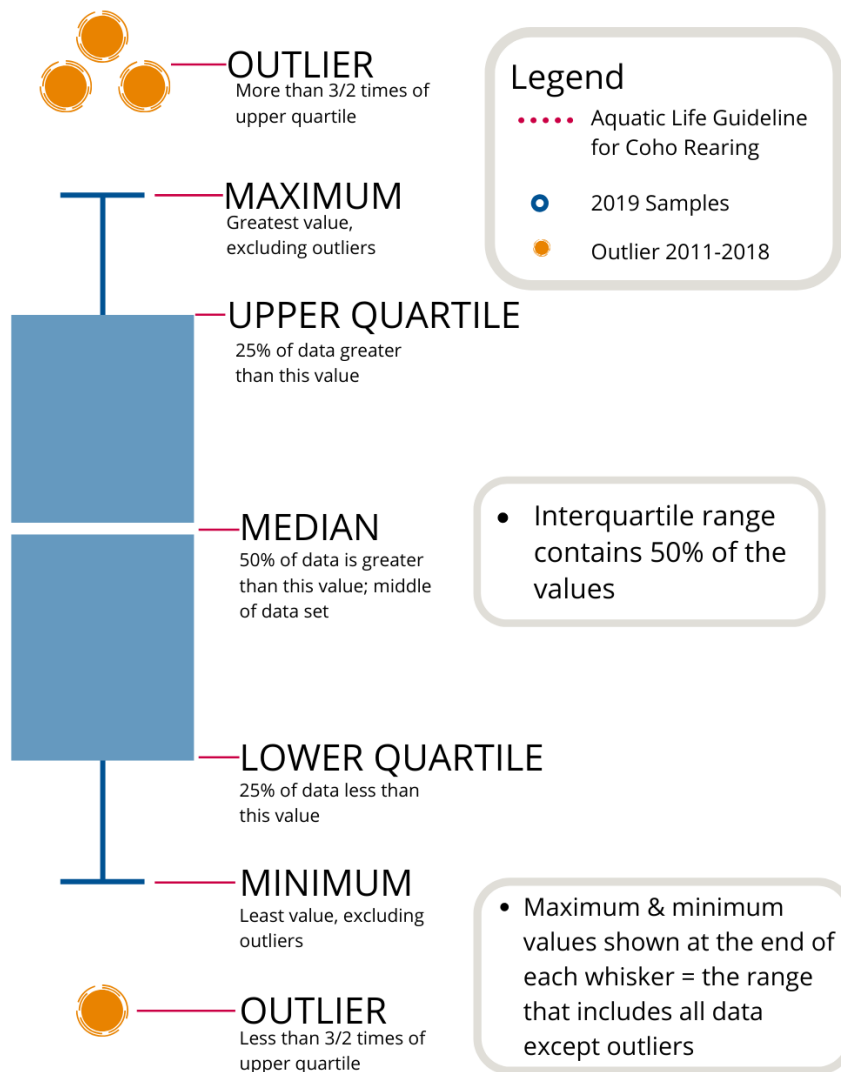
## **WR2 CWMN Sample Sites:**

The table below shows the sites monitored by each of the streamkeeper organizations, as well as the number of years and which years a site was sampled. The number of years is important to keep in mind when interpreting the box plots as the plot for each site may contain a slightly different temporal range.

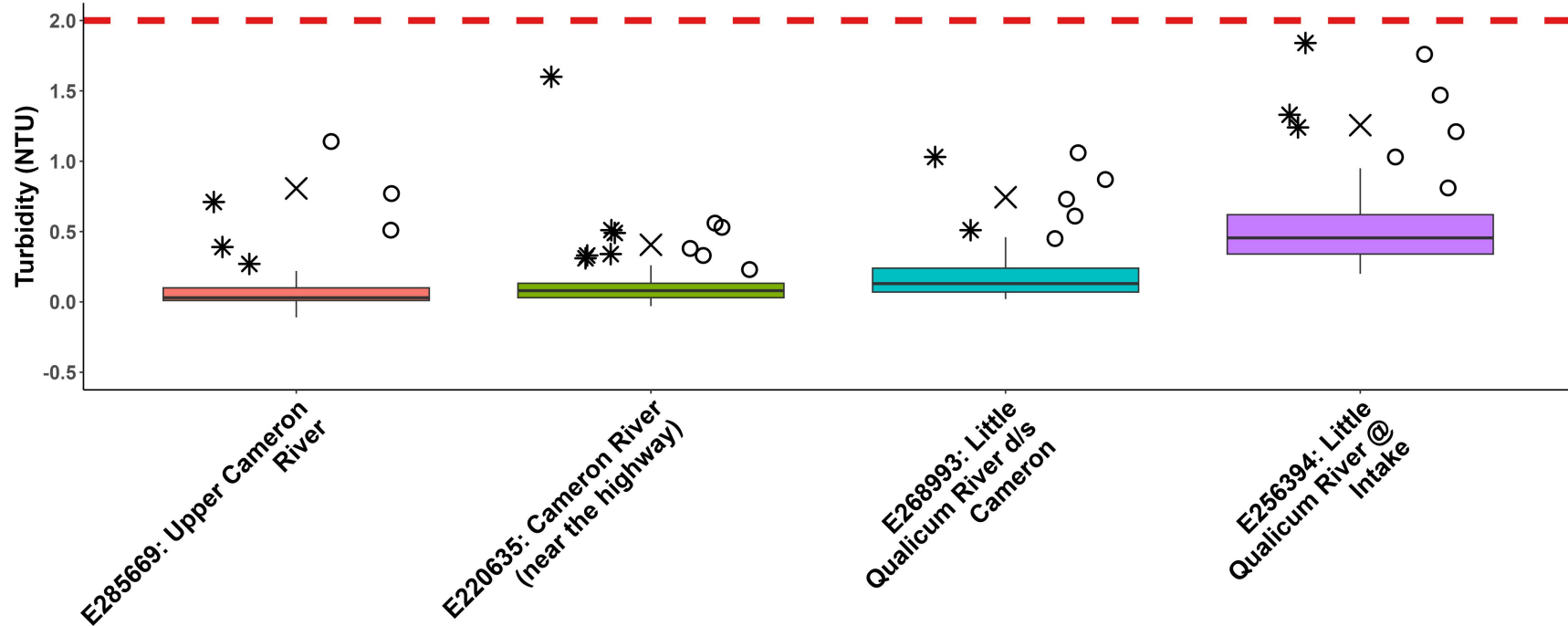
Group	EMS ID	Geographic Description	Years Sampled	Years Monitored
QBS	E285669	Upper Cameron River	13	2011 – present
QBS	E220635	Cameron River (near the highway, just u/s of Cathedral Grove)	13	2011 – present
QBS	E268993	Little Qualicum River 1.2 km d/s Cameron Lake	13	2011 – present
QBS	E287697	Whiskey Creek on Hwy 4, TB Ave Save on Gas	13	2011 – present
QBS	E256394	Little Qualicum River at Intake	13	2011 – present
QBS	E318150	Harris Creek on north/downstream side of Hwy 4	5	2019 – present



## How to Interpret a Box Plot:

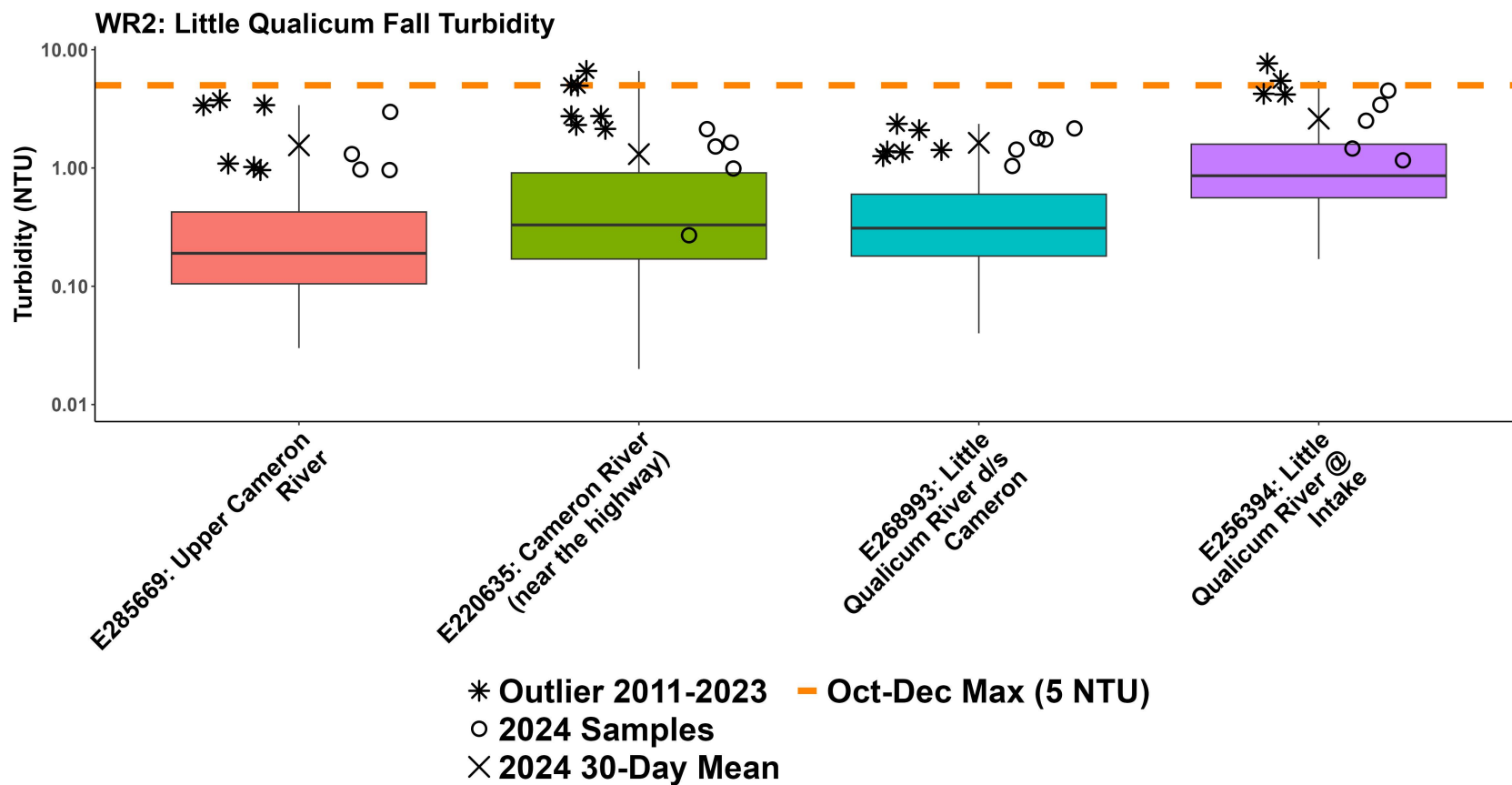


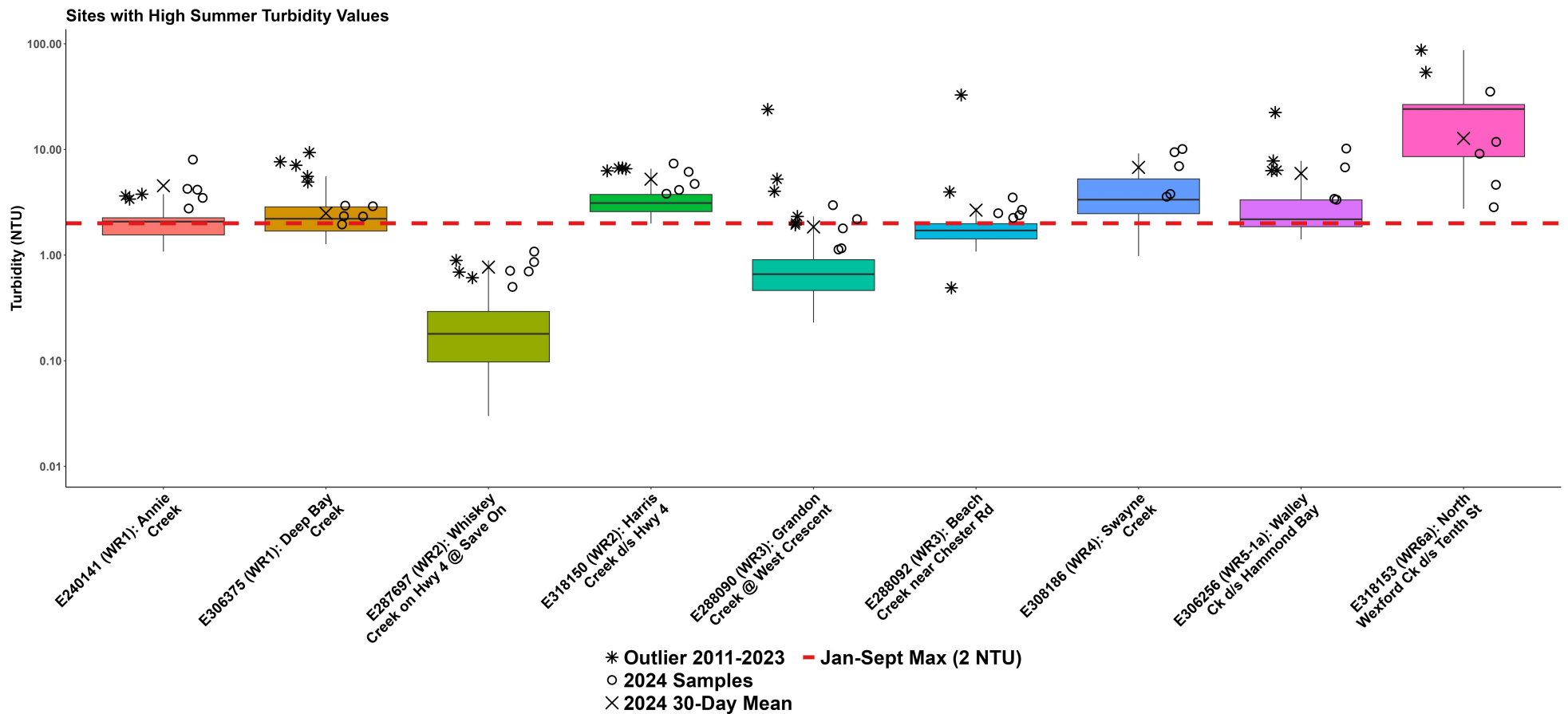
## WR2: Little Qualicum Summer Turbidity

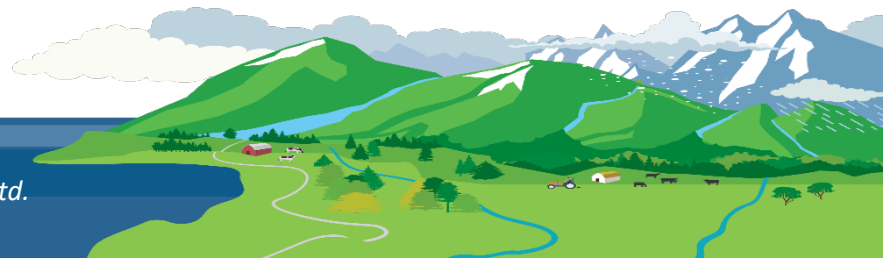
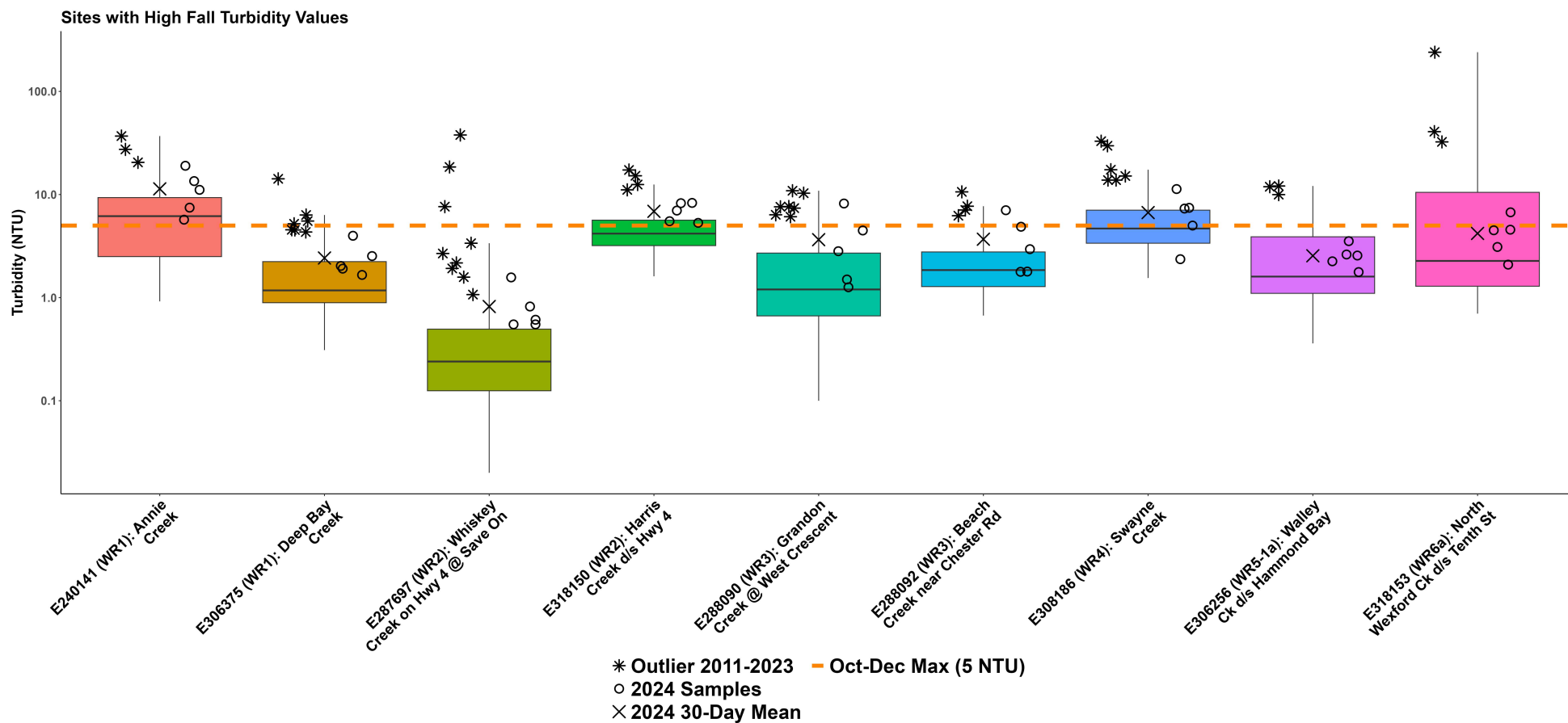


\* Outlier 2011-2023    — Jan-Sept Max (2 NTU)  
 o 2024 Samples  
 x 2024 30-Day Mean

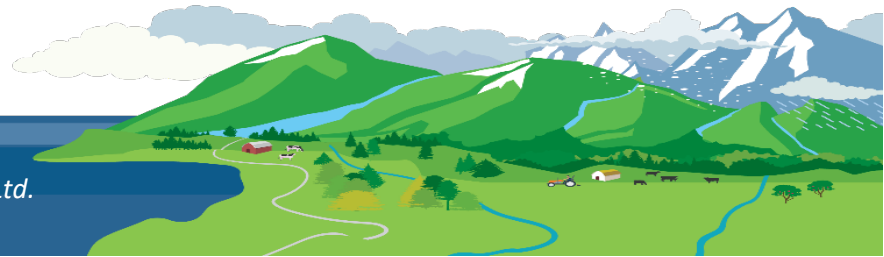
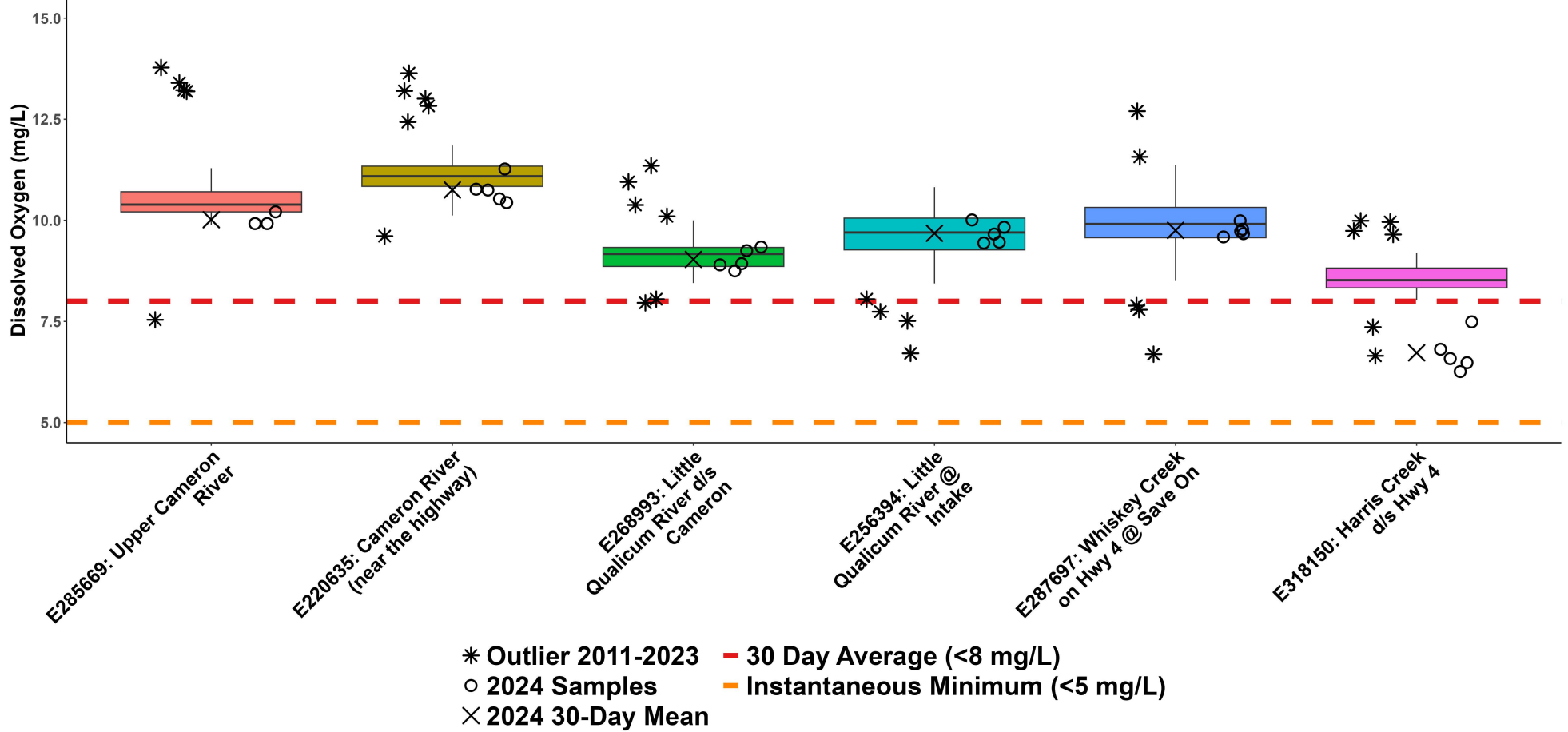




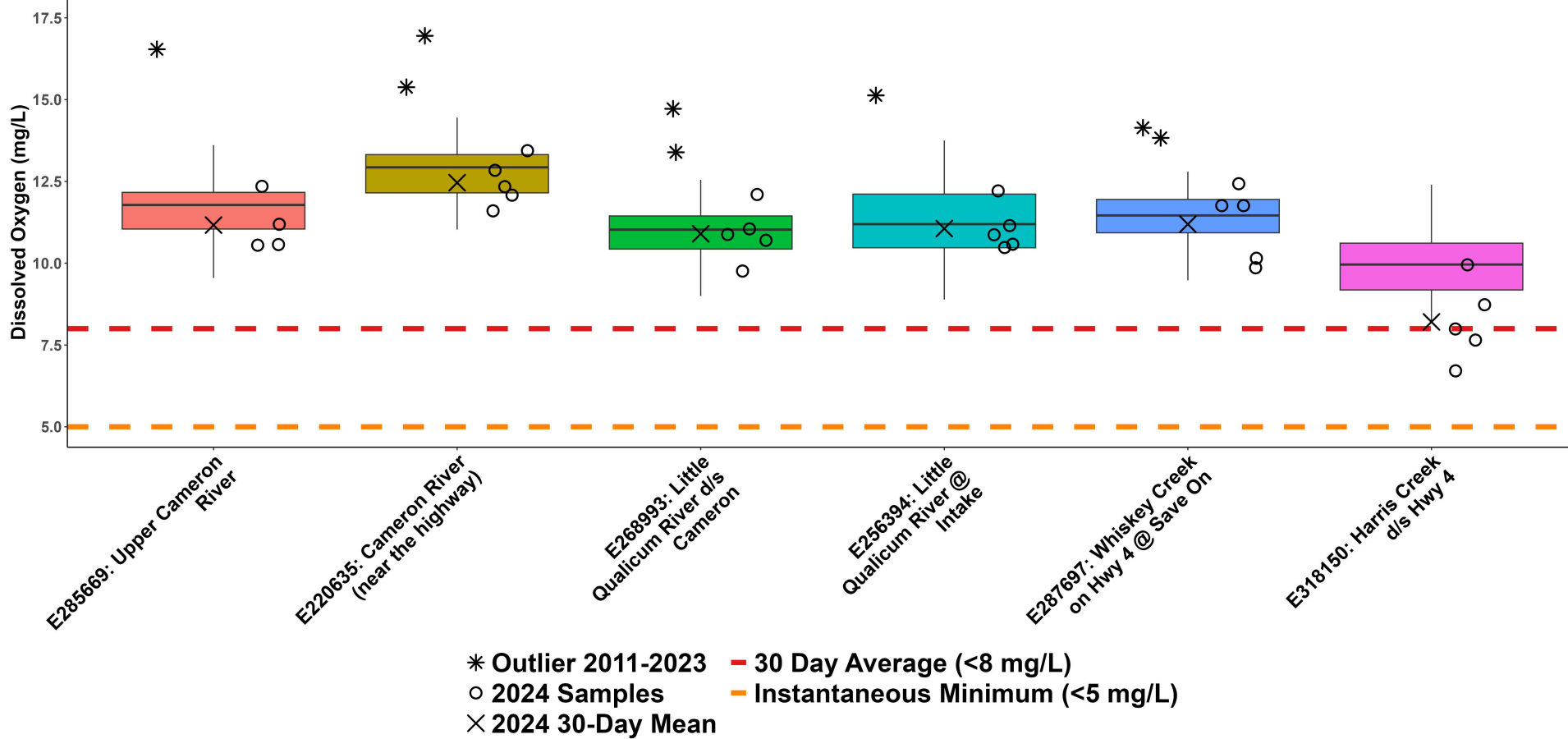




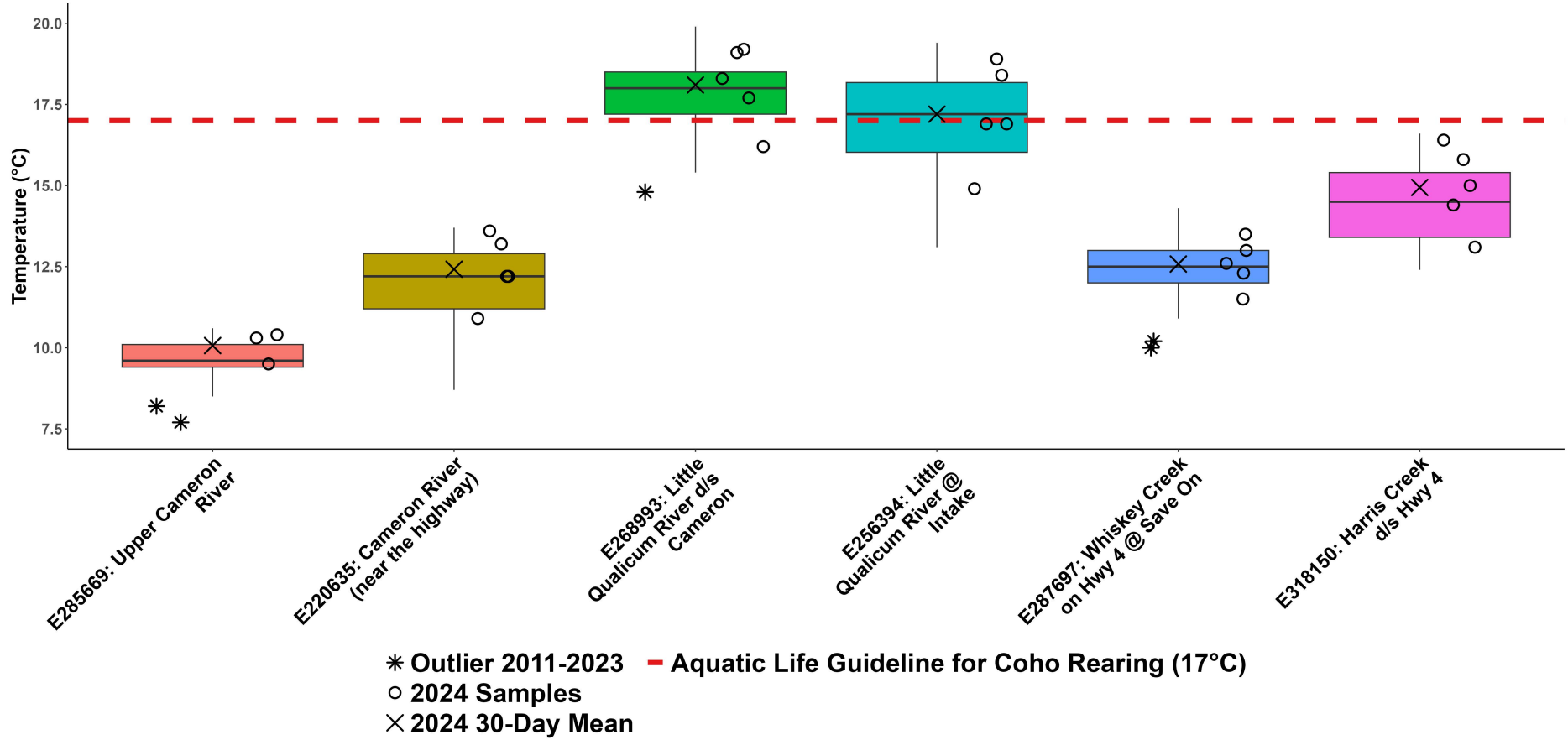
## WR2: Little Qualicum Summer Dissolved Oxygen

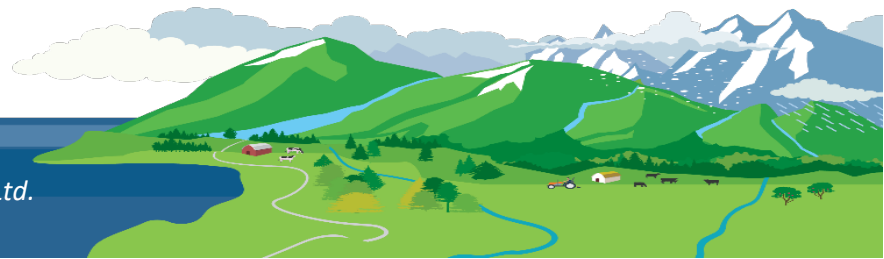
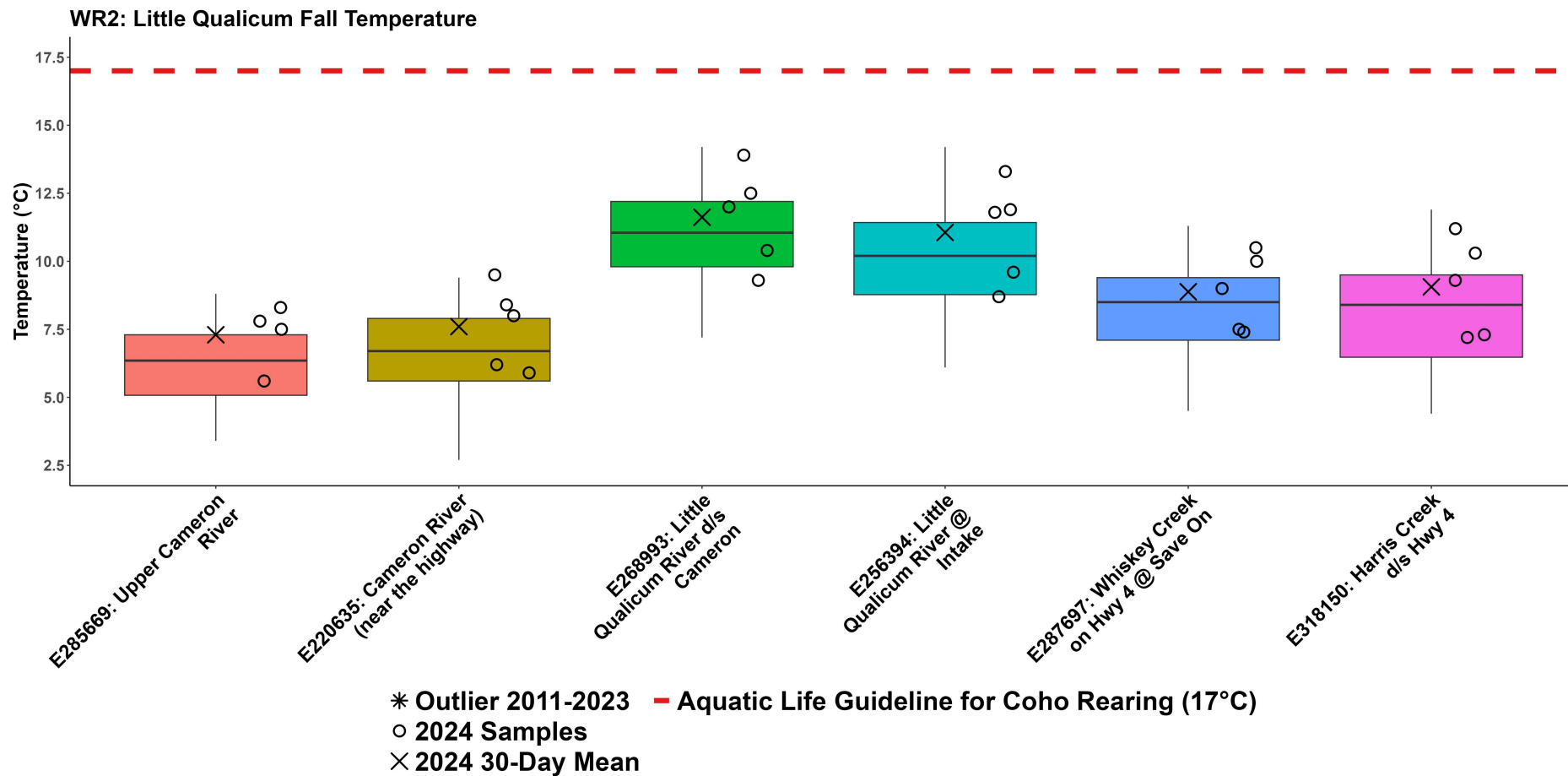


## WR2: Little Qualicum Fall Dissolved Oxygen

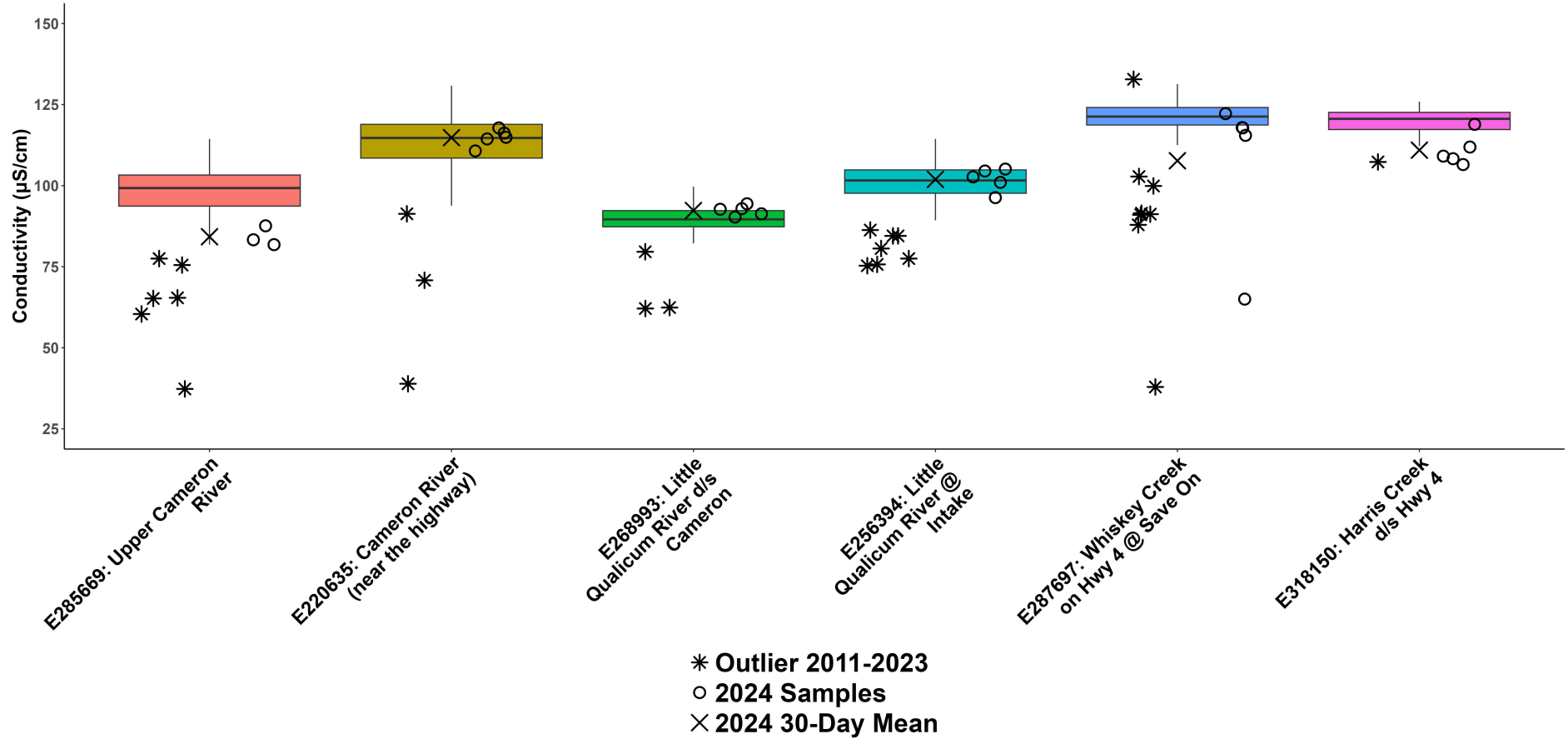


## WR2: Little Qualicum Summer Temperature





## WR2: Little Qualicum Summer Conductivity



## WR2: Little Qualicum Fall Conductivity

