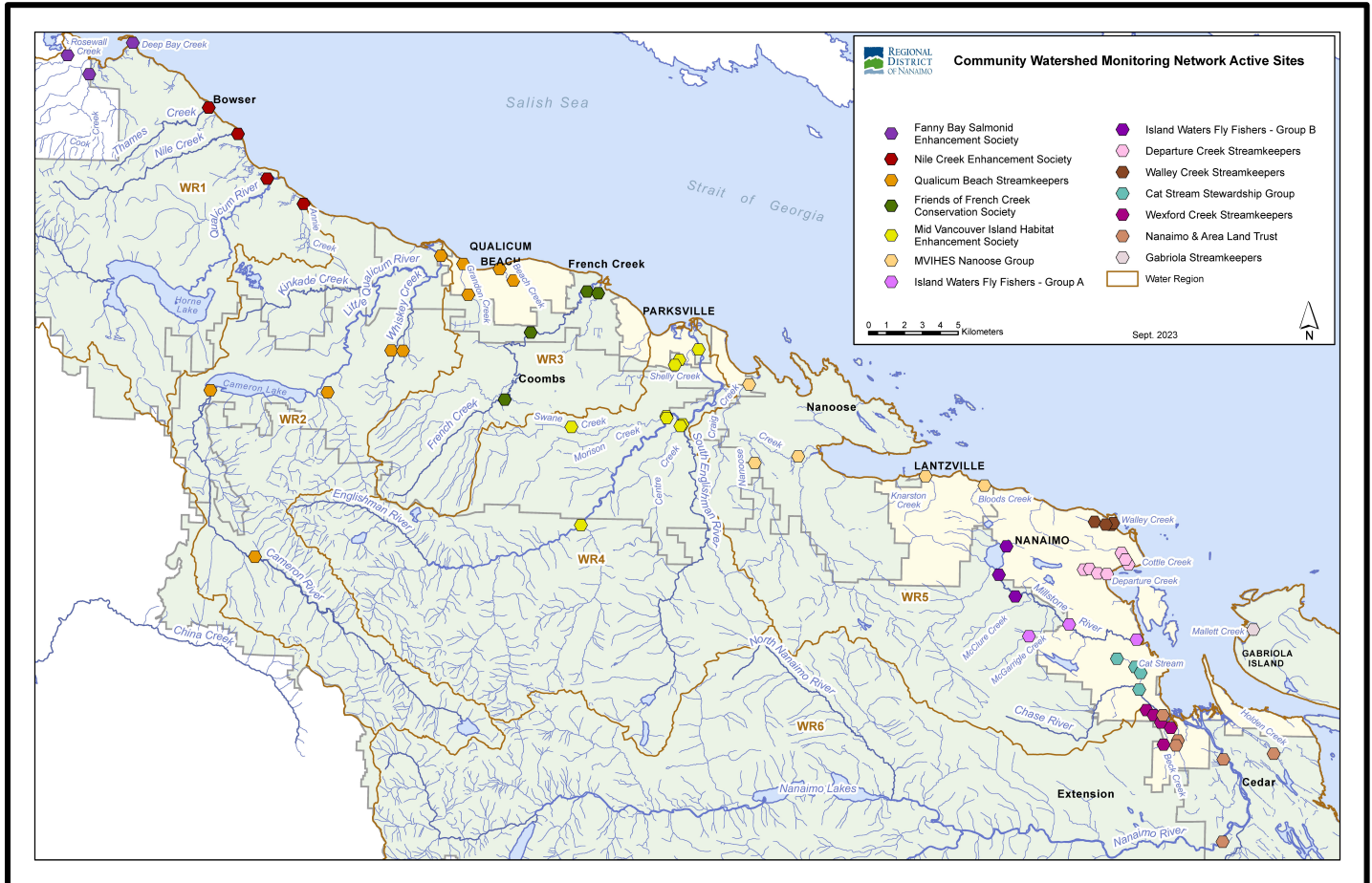


Community Watershed Monitoring Network 2023 Results by Water Region



Included in Water Region (WR) 2 package:

1. CWMN WR2 sample sites
2. How to interpret a box plot
3. Box Plot Comparison – 2023 data to previous years: *displayed by parameter (Turbidity, Dissolved Oxygen, Temperature, Conductivity) & sample period (summer, fall)*
4. QBS CWMN map of sample sites



Water Region 2
sampled by:

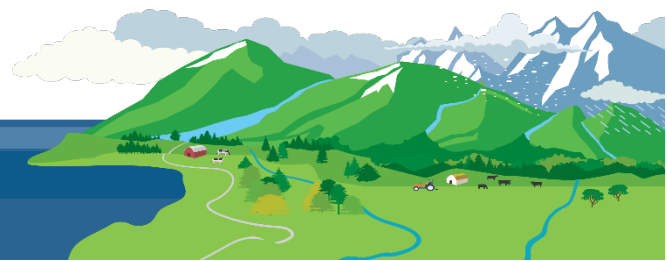
**Qualicum Beach Streamkeepers
(QBS)**



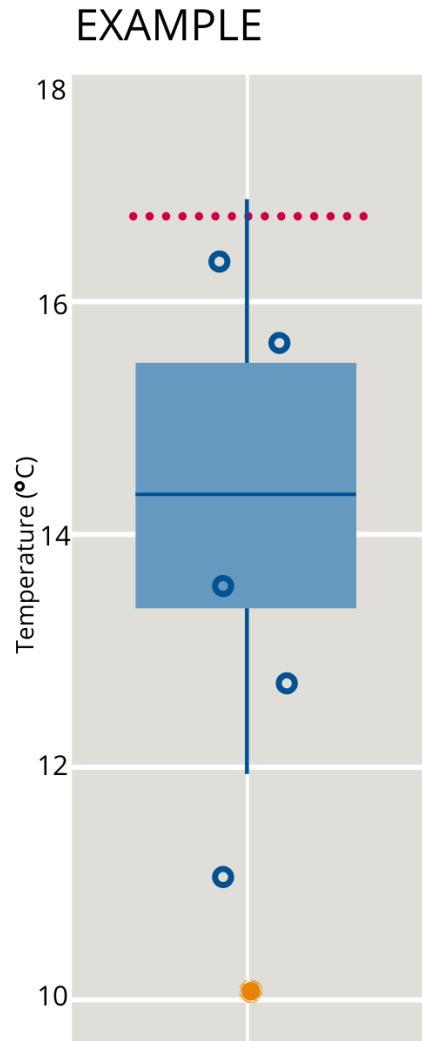
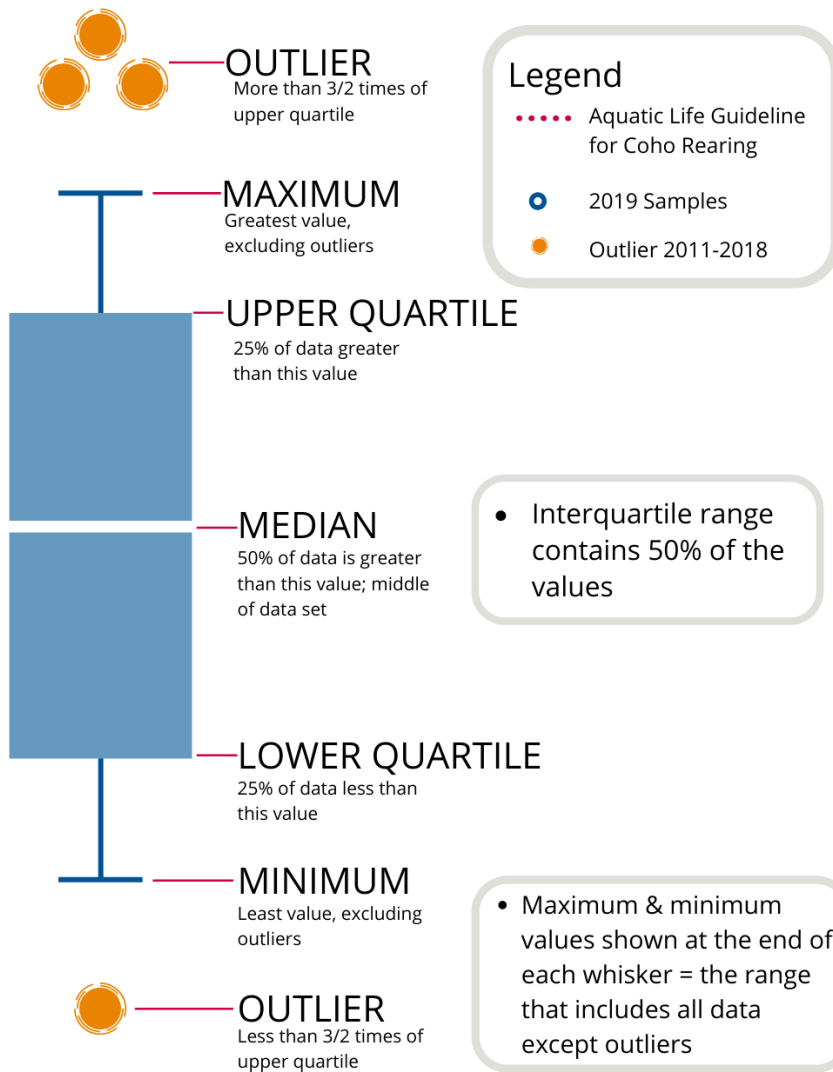
WR2 CWMN Sample Sites:

The table below shows the sites monitored by each of the streamkeeper organizations, as well as the number of years and which years a site was sampled. The number of years is important to keep in mind when interpreting the box plots as the plot for each site may contain a slightly different temporal range.

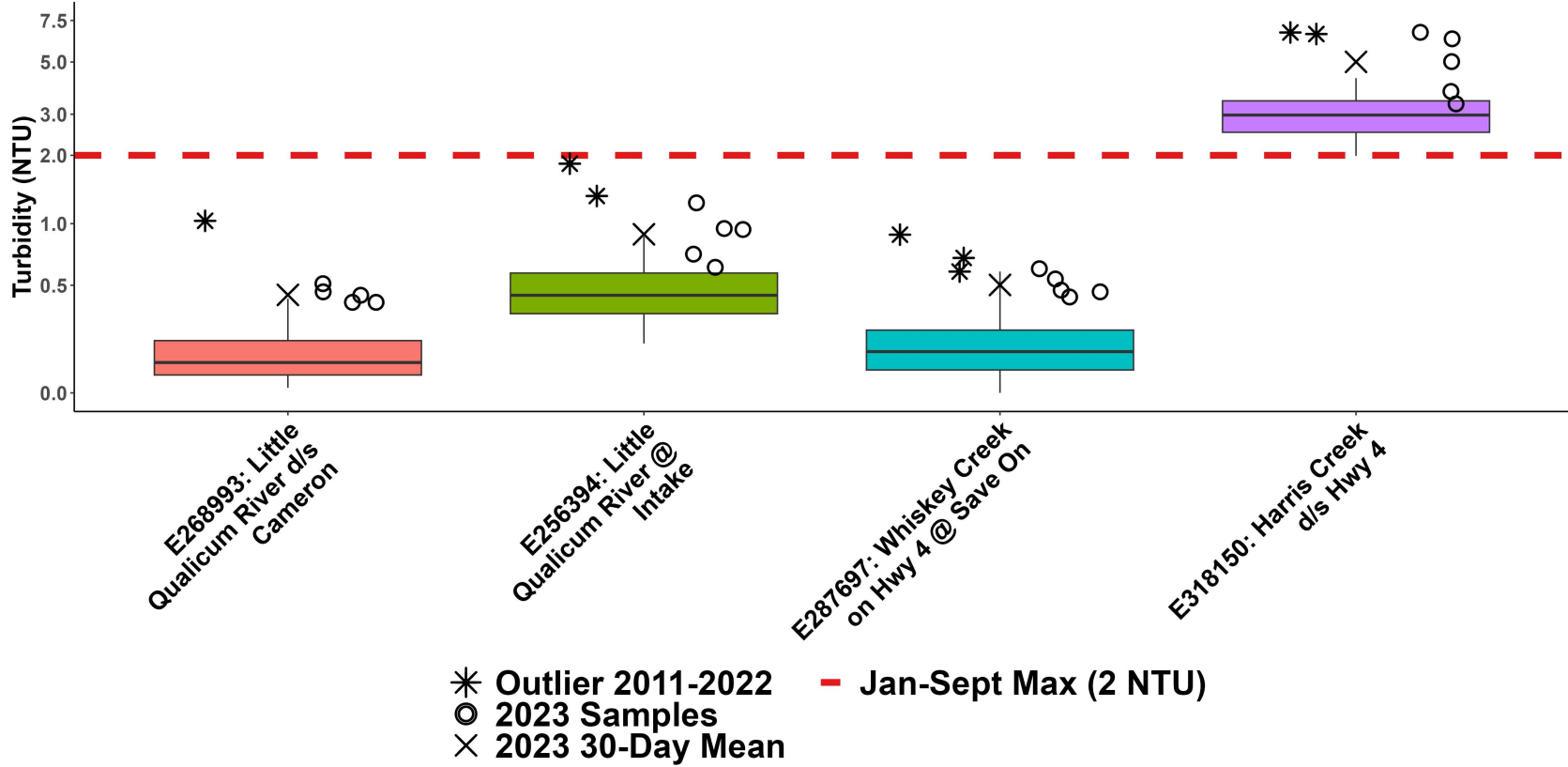
Group	EMS ID	Geographic Description	Years Sampled	Years Monitored
QBS	E268993	Little Qualicum River 1.2 km d/s Cameron Lake	12	2011 – present
QBS	E287697	Whiskey Creek on Hwy 4, TB Ave Save on Gas	12	2011 – present
QBS	E256394	Little Qualicum River at Intake	12	2011 – present
QBS	E318150	Harris Creek on north/downstream side of Hwy 4	4	2019 – present



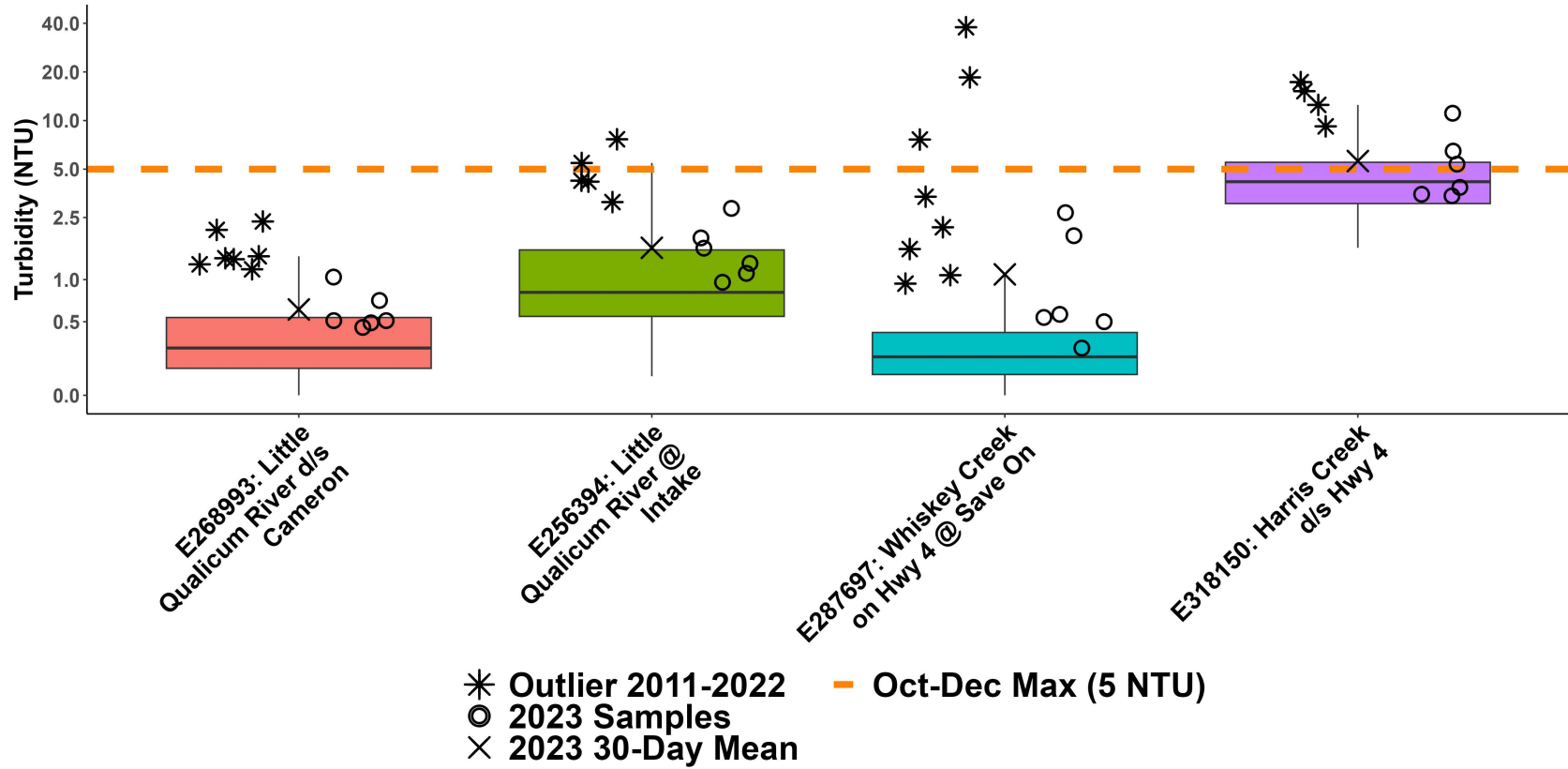
How to Interpret a Box Plot:



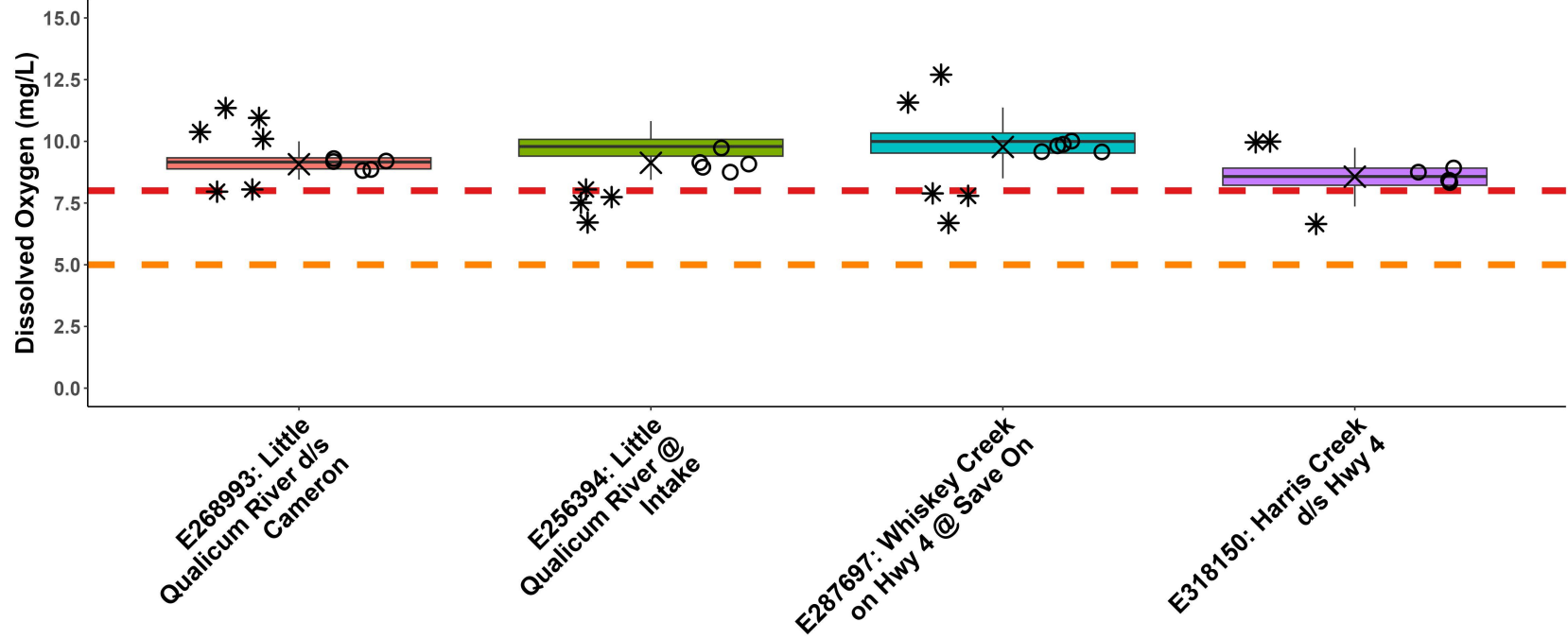
WR2: Little Qualicum Summer Turbidity



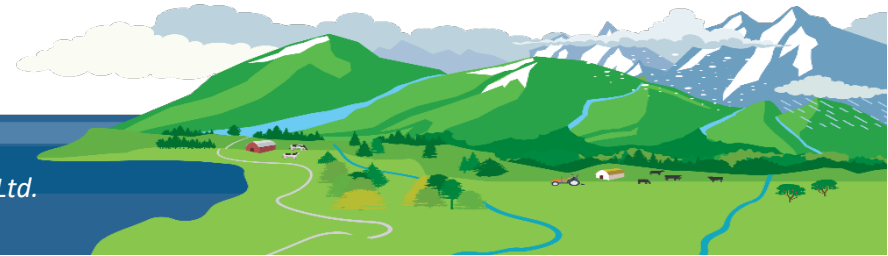
WR2: Little Qualicum Fall Turbidity



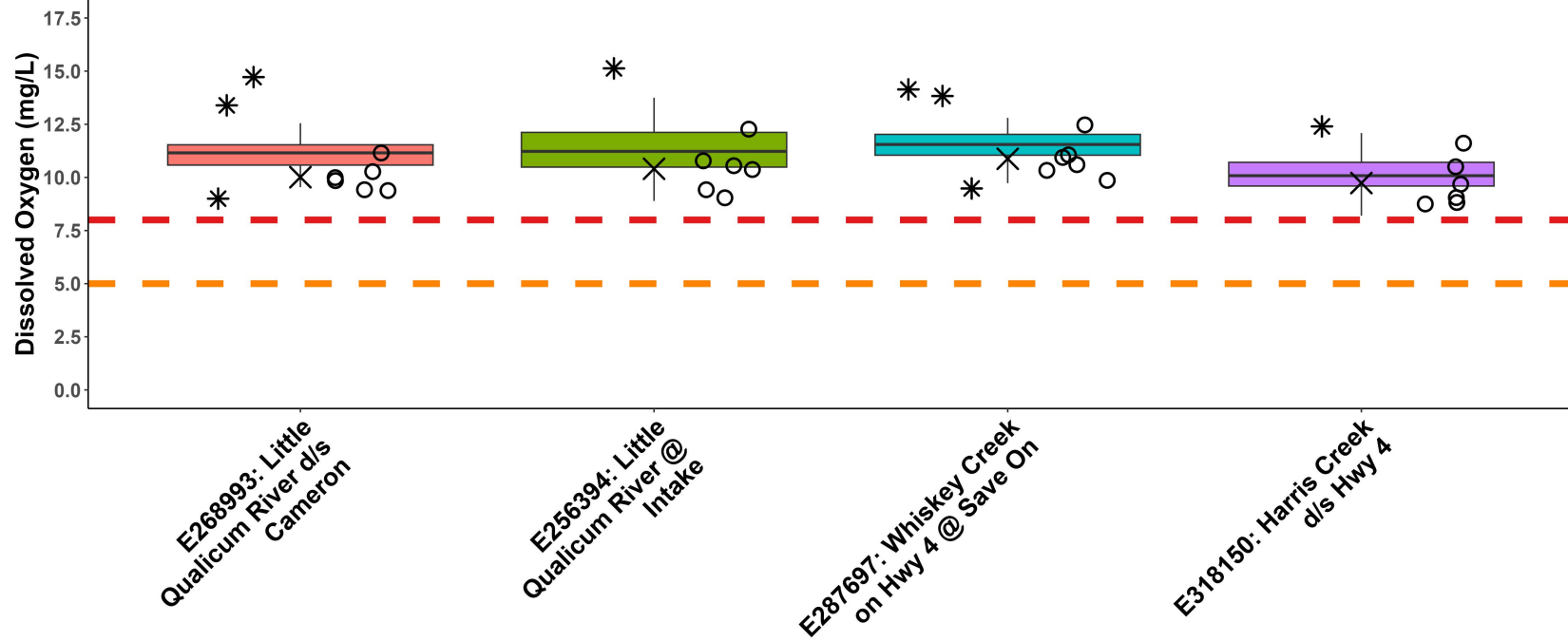
WR2: Little Qualicum Summer Dissolved Oxygen



- * Outlier 2011-2022
- 2023 Samples
- × 2023 30-Day Mean
- - 30 Day Average (<8 mg/L)
- - Instantaneous Minimum (<5 mg/L)



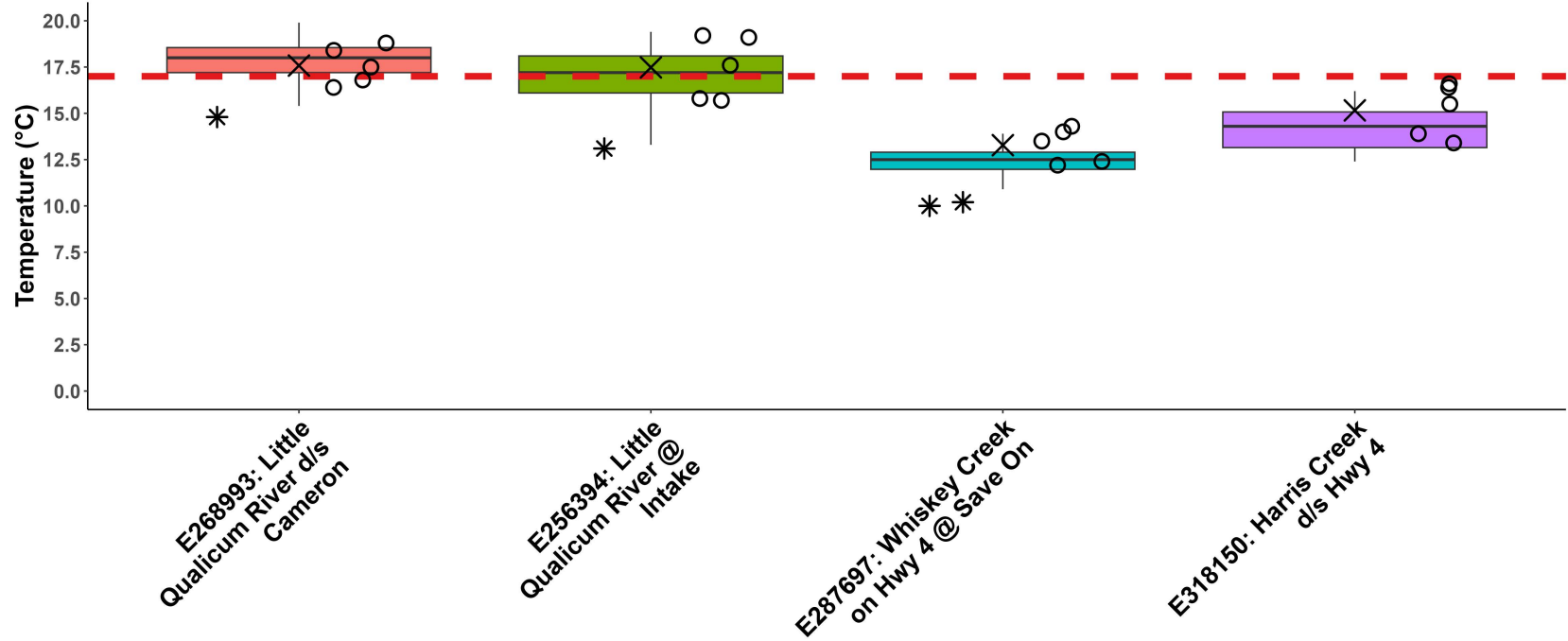
WR2: Little Qualicum Fall Dissolved Oxygen



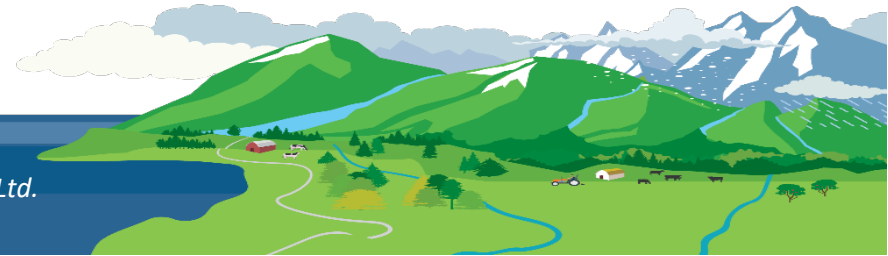
- * Outlier 2011-2022
- 2023 Samples
- × 2023 30-Day Mean
- - 30 Day Average (<8 mg/L)
- - Instantaneous Minimum (<5 mg/L)



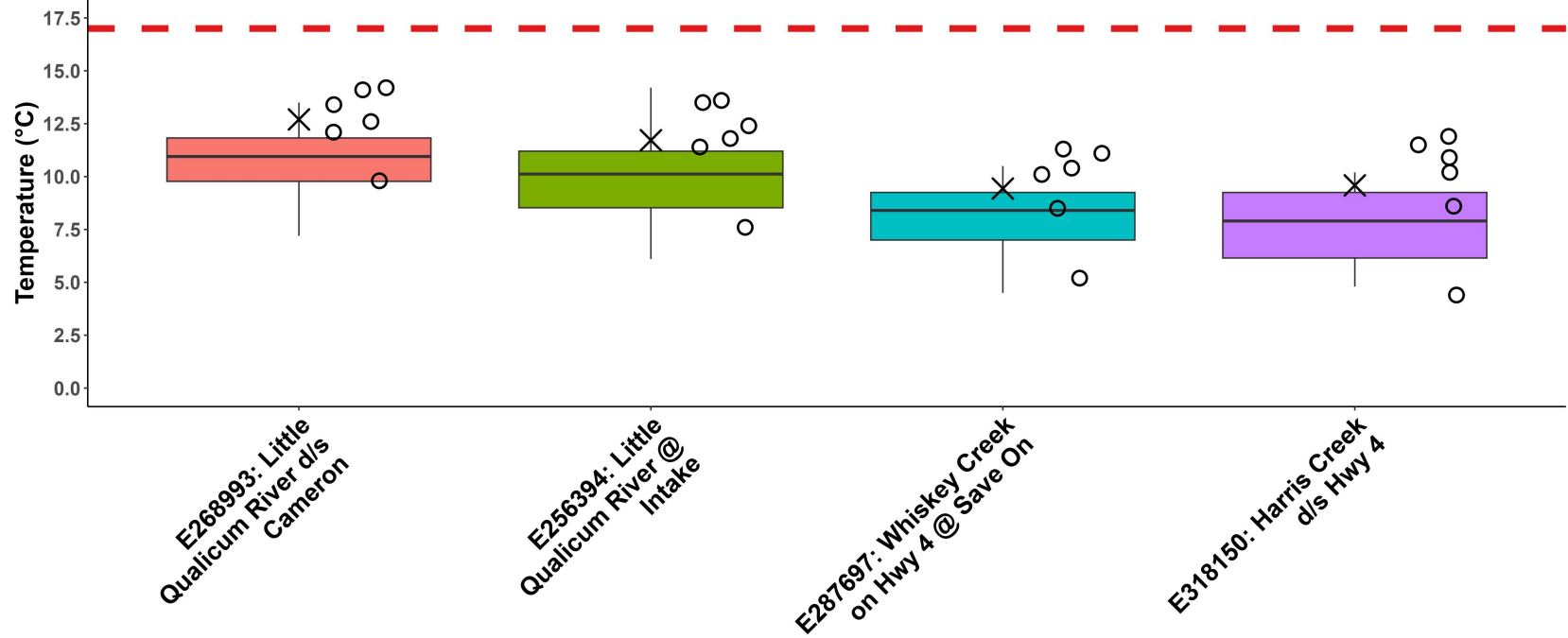
WR2: Little Qualicum Summer Temperature



* Outlier 2011-2022 - Aquatic Life Guideline for Coho Rearing (17°C)
 ○ 2023 Samples
 × 2023 30-Day Mean



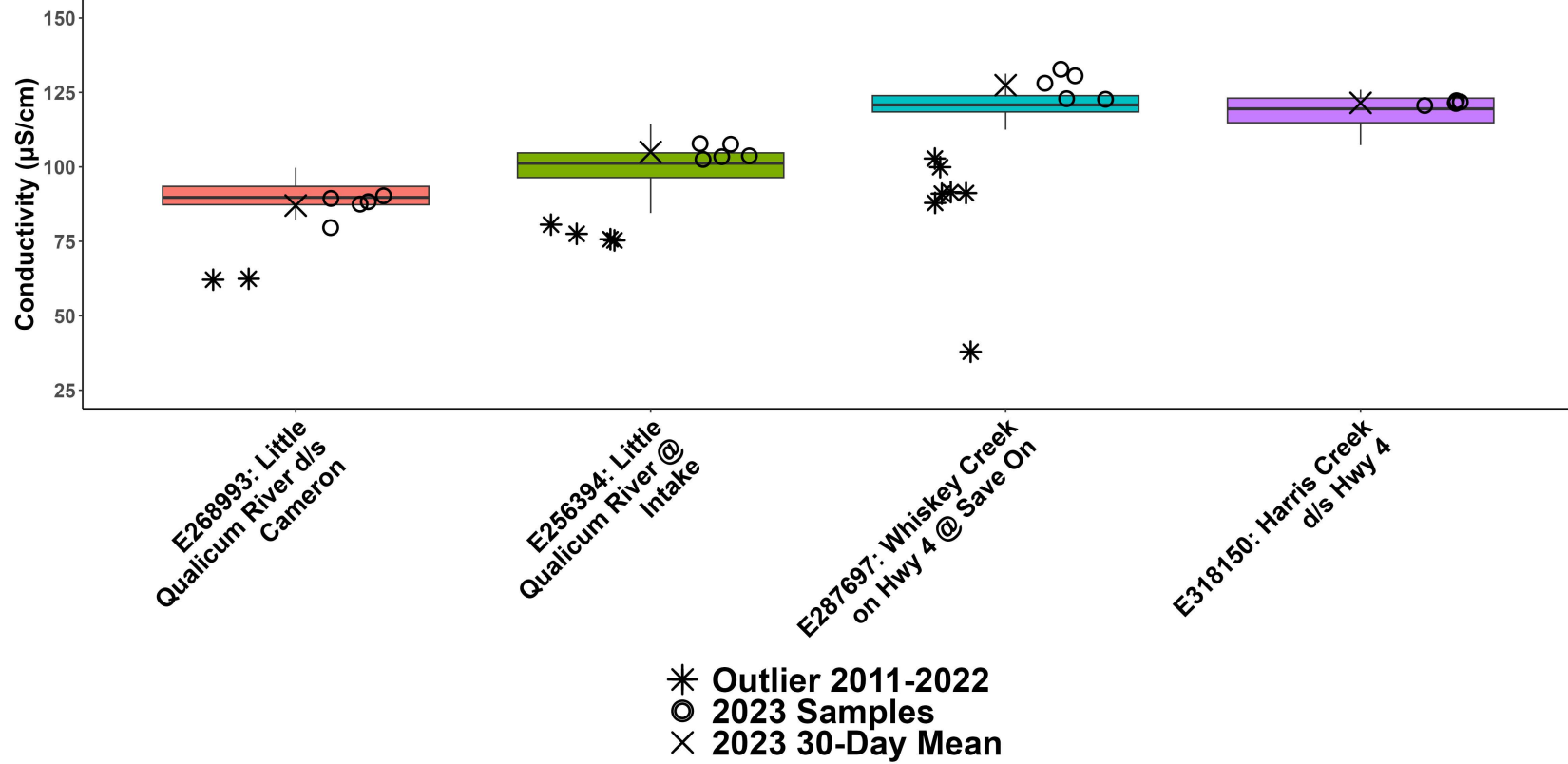
WR2: Little Qualicum Fall Temperature



* Outlier 2011-2022 - Aquatic Life Guideline for Coho Rearing (17°C)
 ○ 2023 Samples
 × 2023 30-Day Mean



WR2: Little Qualicum Summer Conductivity



WR2: Little Qualicum Fall Conductivity

