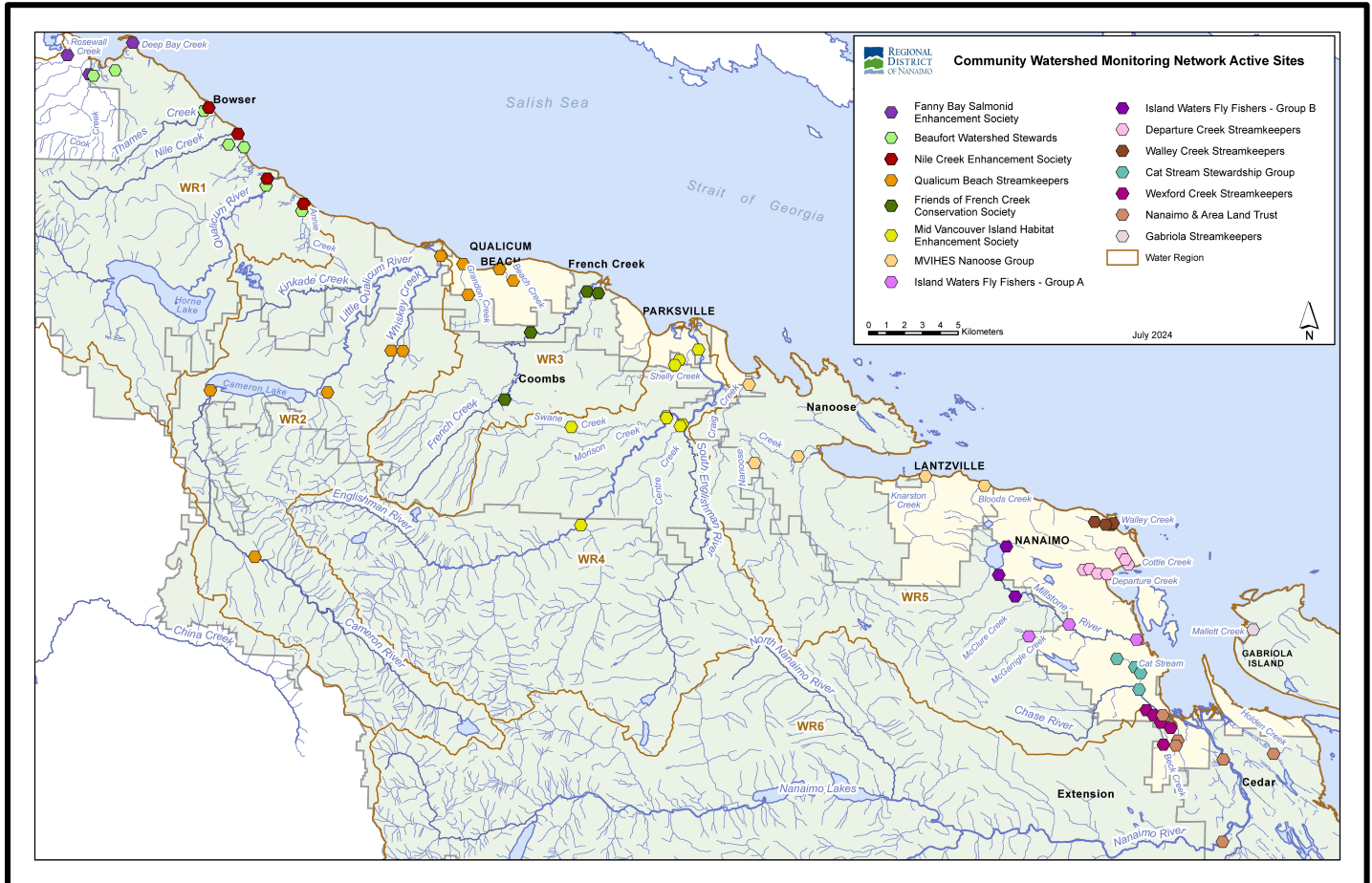


Community Watershed Monitoring Network 2024 Results by Water Region



Included in Water Region (WR) 1 package:

1. CWMN WR1 sample sites
2. How to interpret a box plot
3. Box Plot Comparison – 2024 data to previous years: *displayed by parameter (Turbidity, Dissolved Oxygen, Temperature, Conductivity) & sample period (summer, fall)*
4. FBSES CWMN map of sample sites
5. NCES CWMN map of sample sites



Water Region 1
sampled by:

**Fanny Bay Salmonid
Enhancement Society (FBSES)
&
Nile Creek Enhancement
Society (NCES)**



WR1 CWMN Sample Sites:

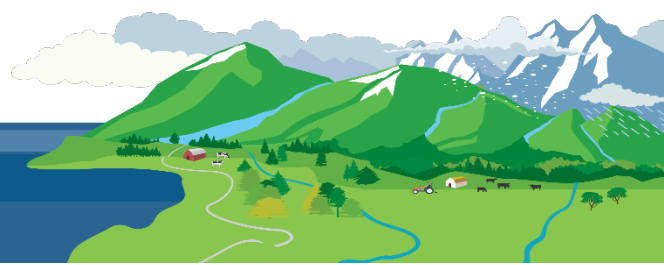
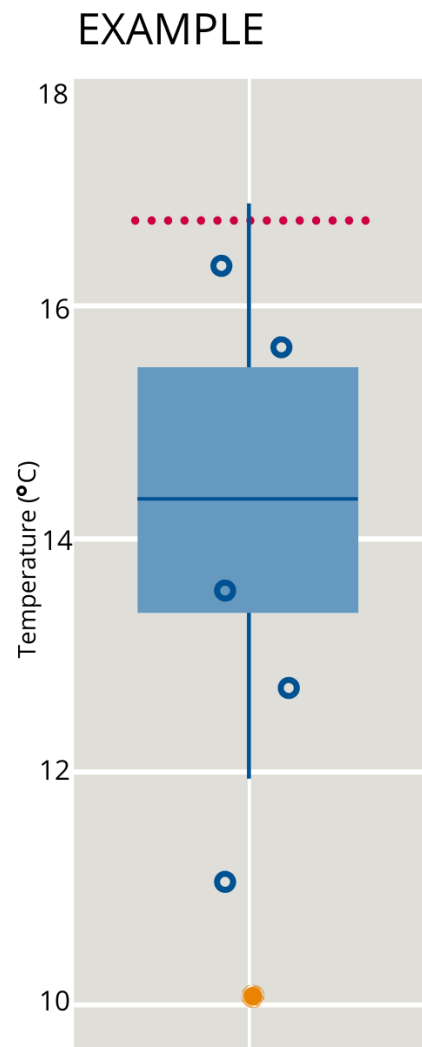
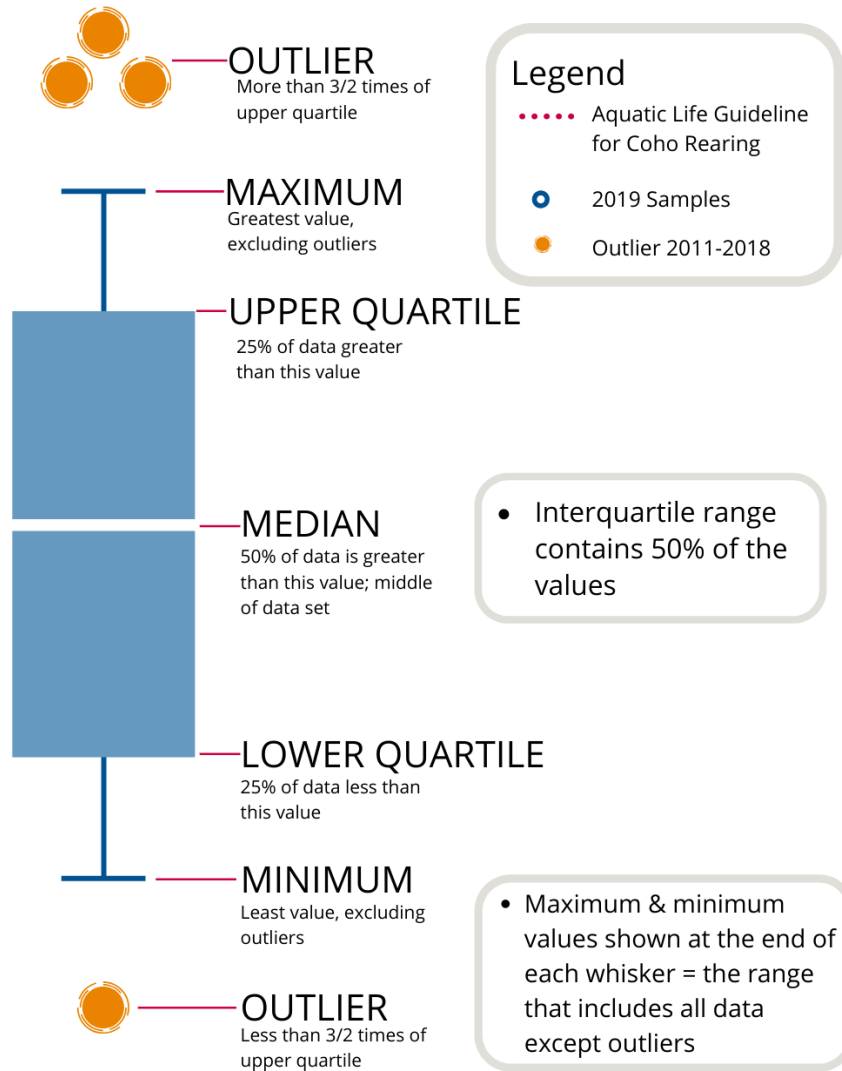
The table below shows the sites monitored by each of the streamkeeper organizations, as well as the number of years and which years a site was sampled. The number of years is important to keep in mind when interpreting the box plots as the plot for each site may contain a slightly different temporal range.

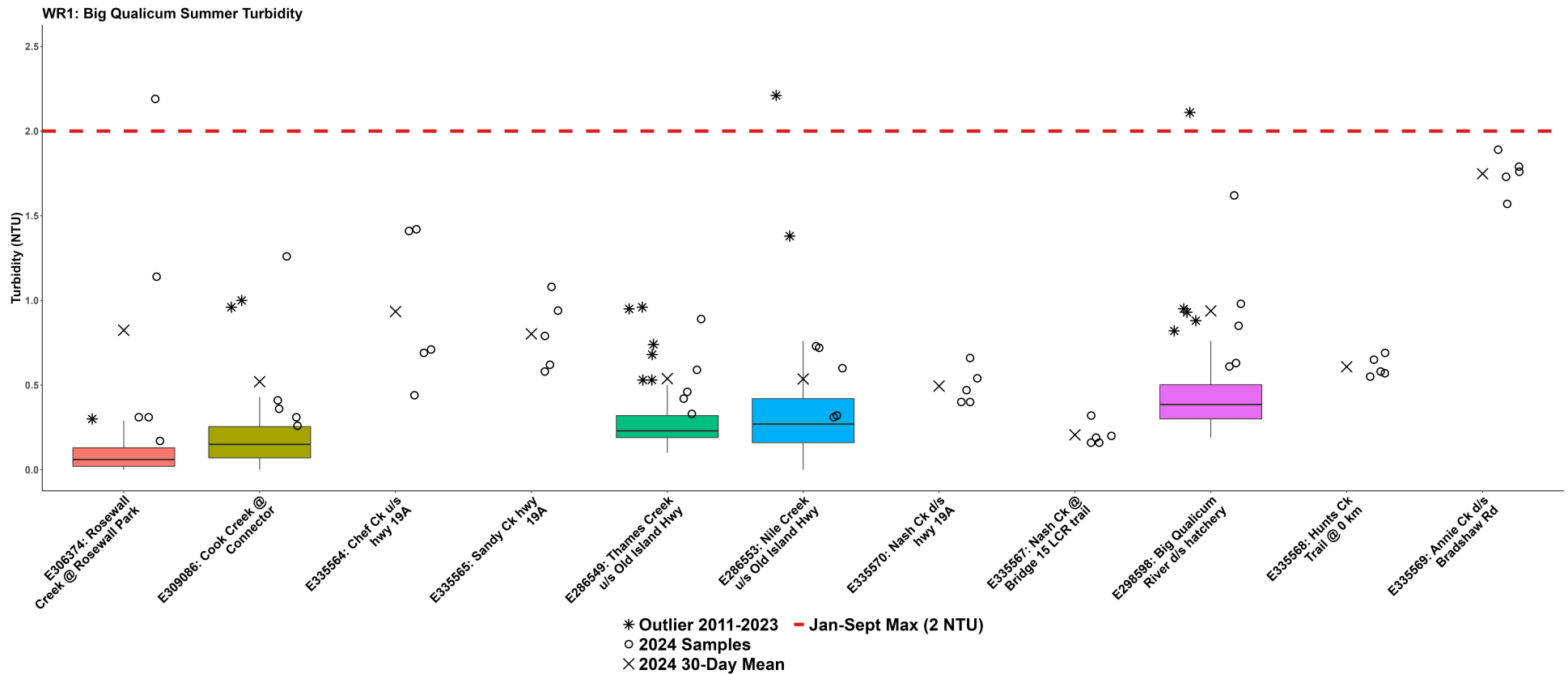
Group	EMS ID	Geographic Description	Years Sampled	Years Monitored
FBSES	E306374	Rosewall Creek @ Rosewall Creek Park	9	2016 – present
FBSES	E309086	Cook Creek at Old Island Hwy Connector	8	2017 – present
FBSES	E306375	Deep Bay Creek	9	2016 – present
NCES / FBSES	E286553	Nile Creek @ <u>Rosepark Rd</u> (50m u/s Old Island Hwy)	13	2011 – present [^]
NCES	E286549	Thames Creek 200m u/s Old Island Hwy	9	2011 – present [*]
NCES	E298598	Big Qualicum River about 700m d/s hatchery	9	2014 – present [~]
NCES	E240141	Annie Creek	9	2014 – present [~]

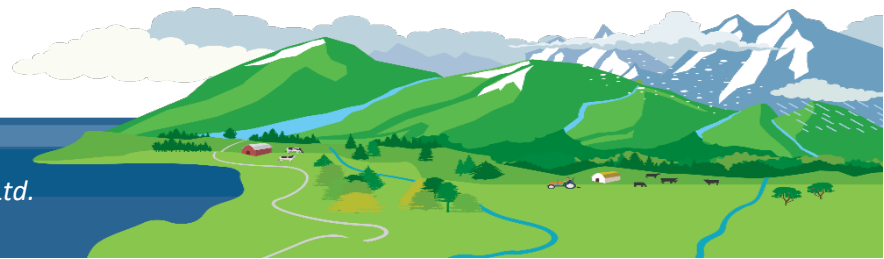
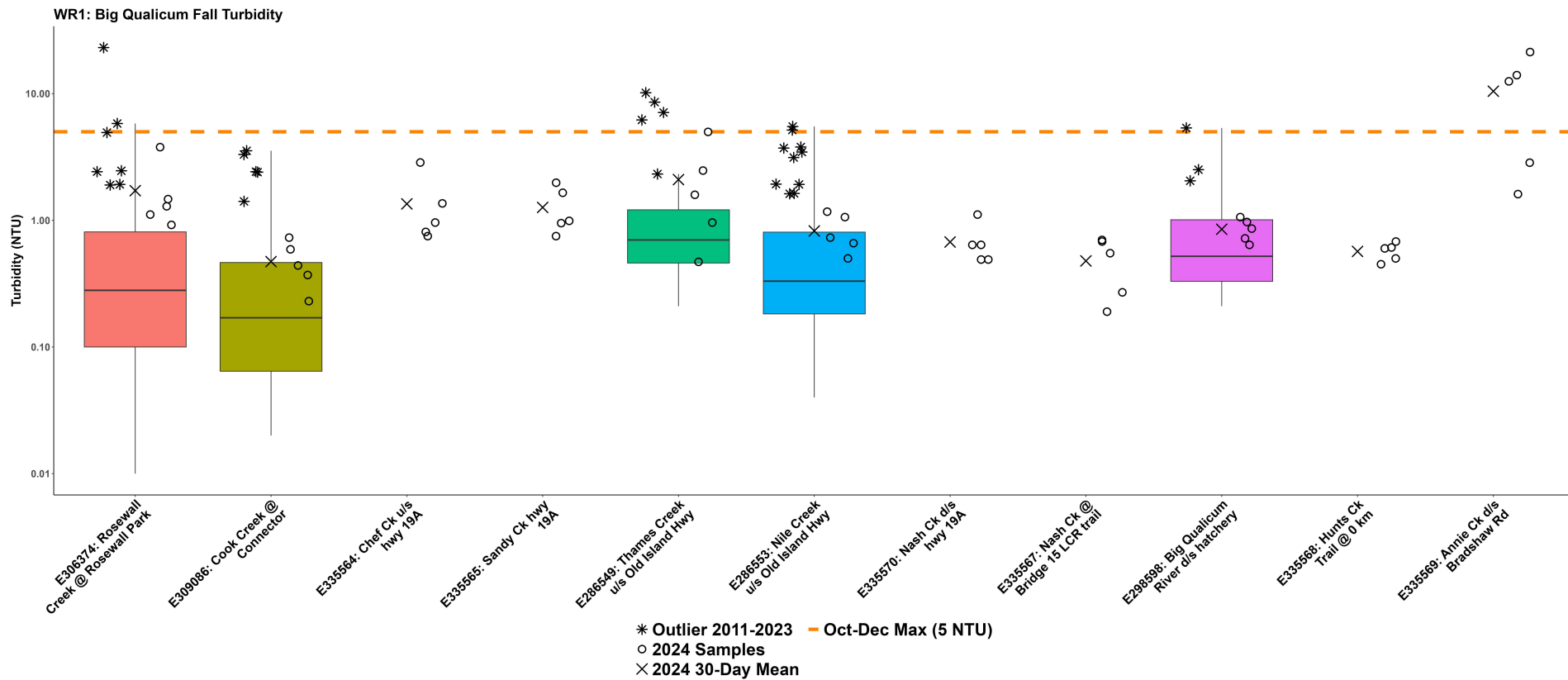
WR1 notes for the number of years sampled: [^]2016 not sampled; ^{*}2014, 2015 and 2019 not sampled; [~]2019 and 2022 not sampled.

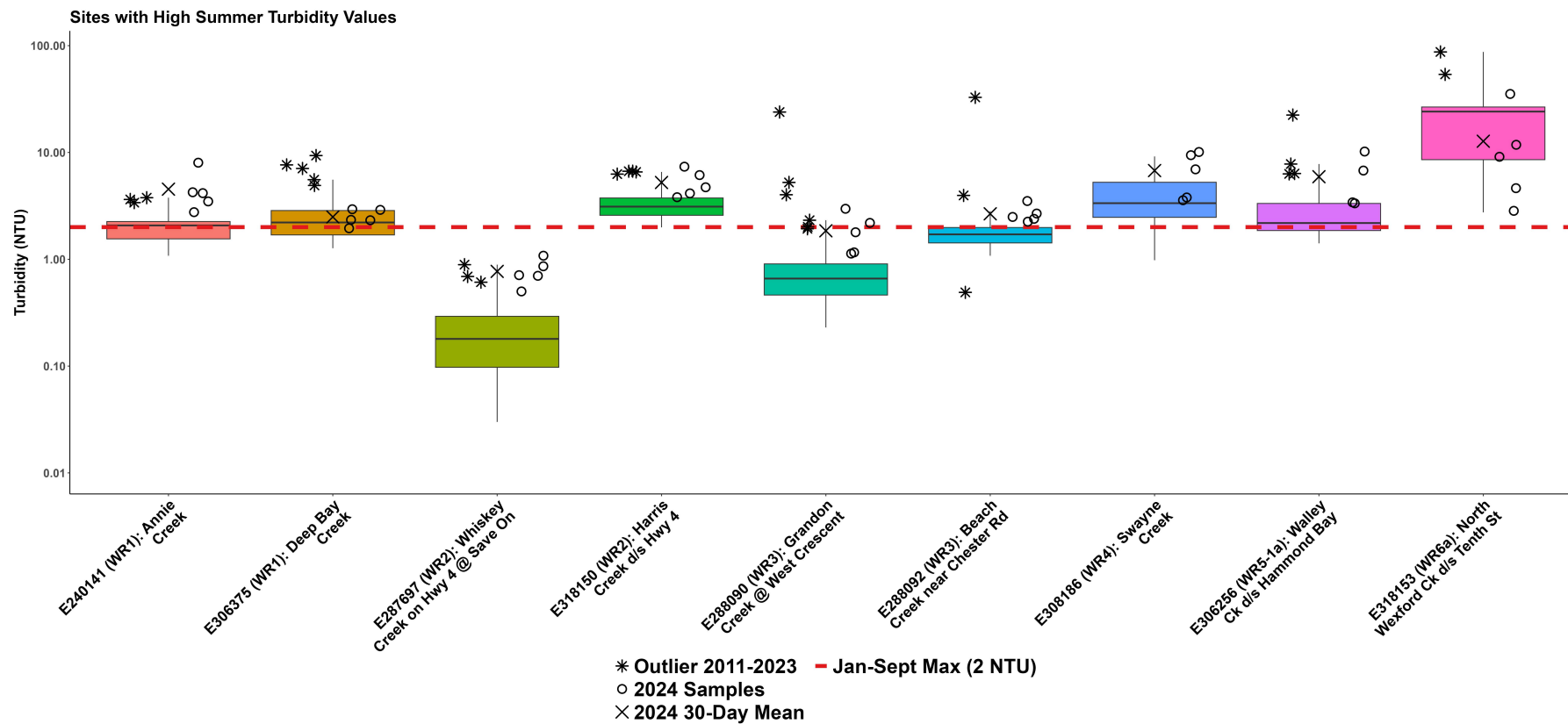


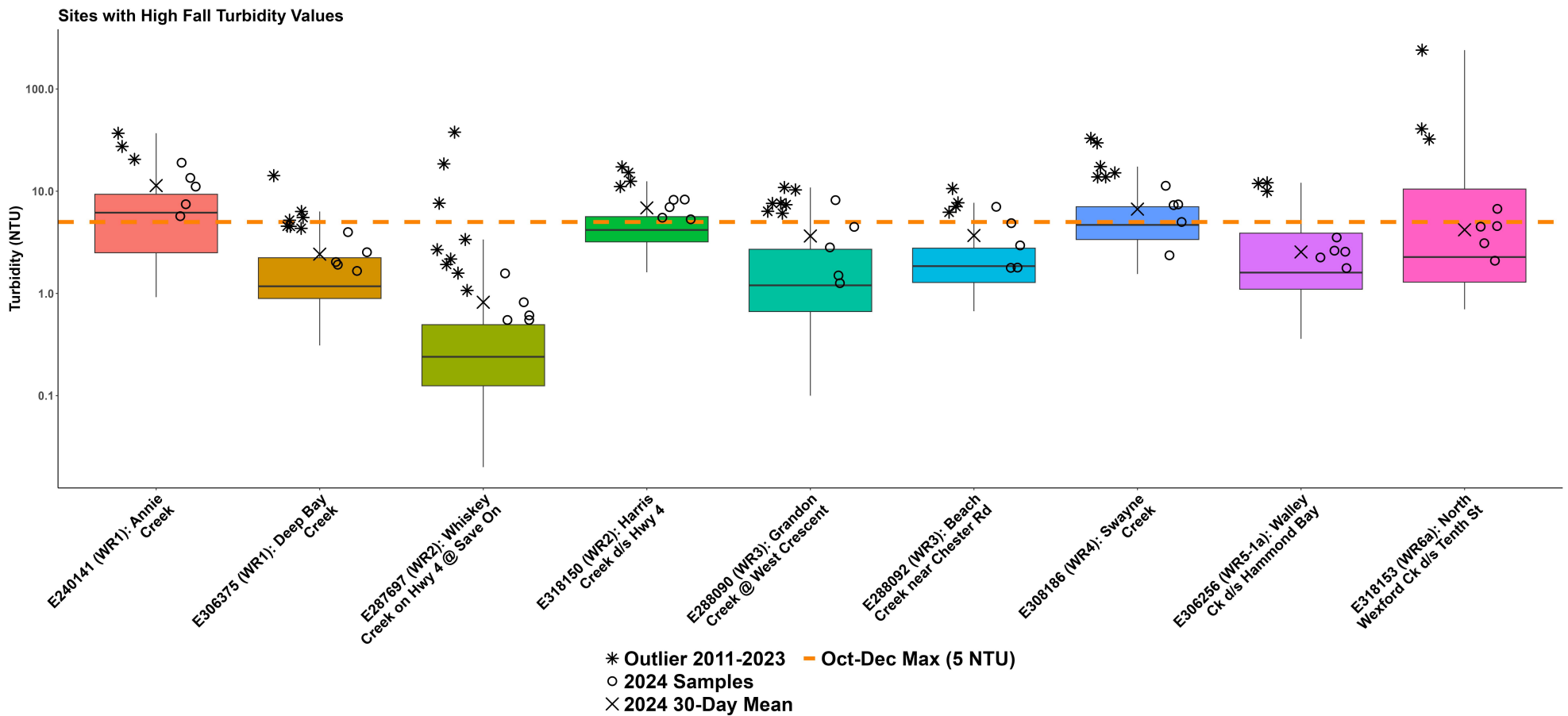
How to Interpret a Box Plot:

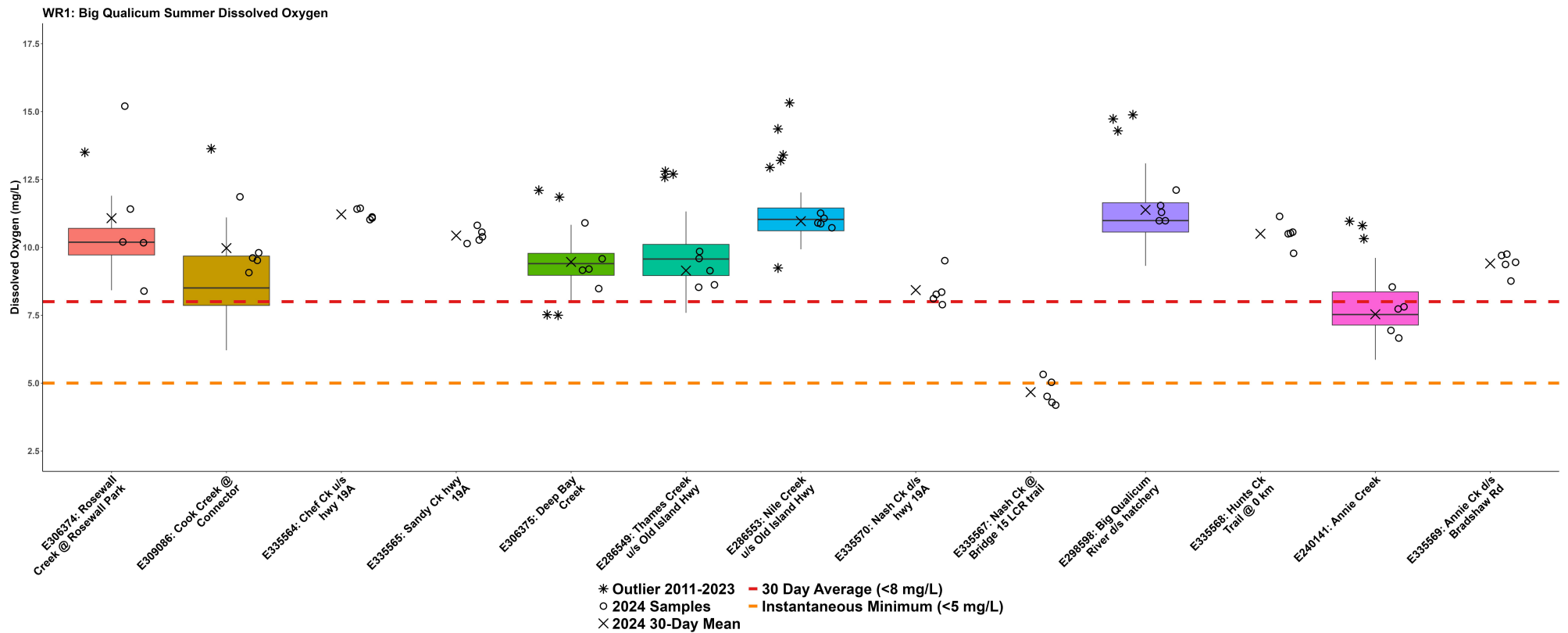


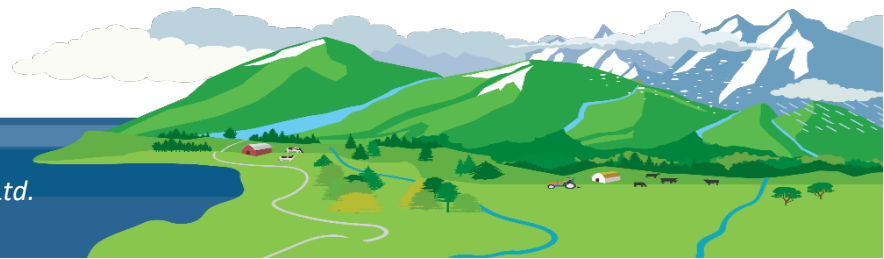
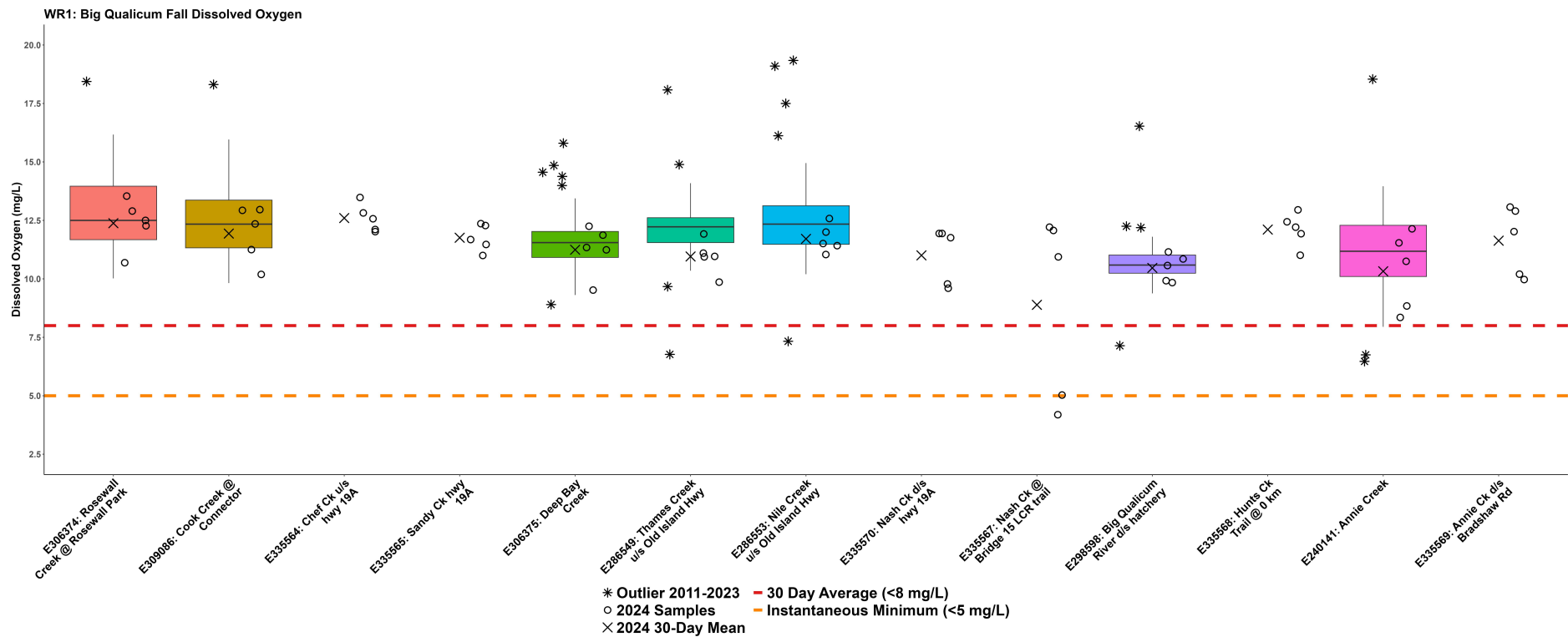


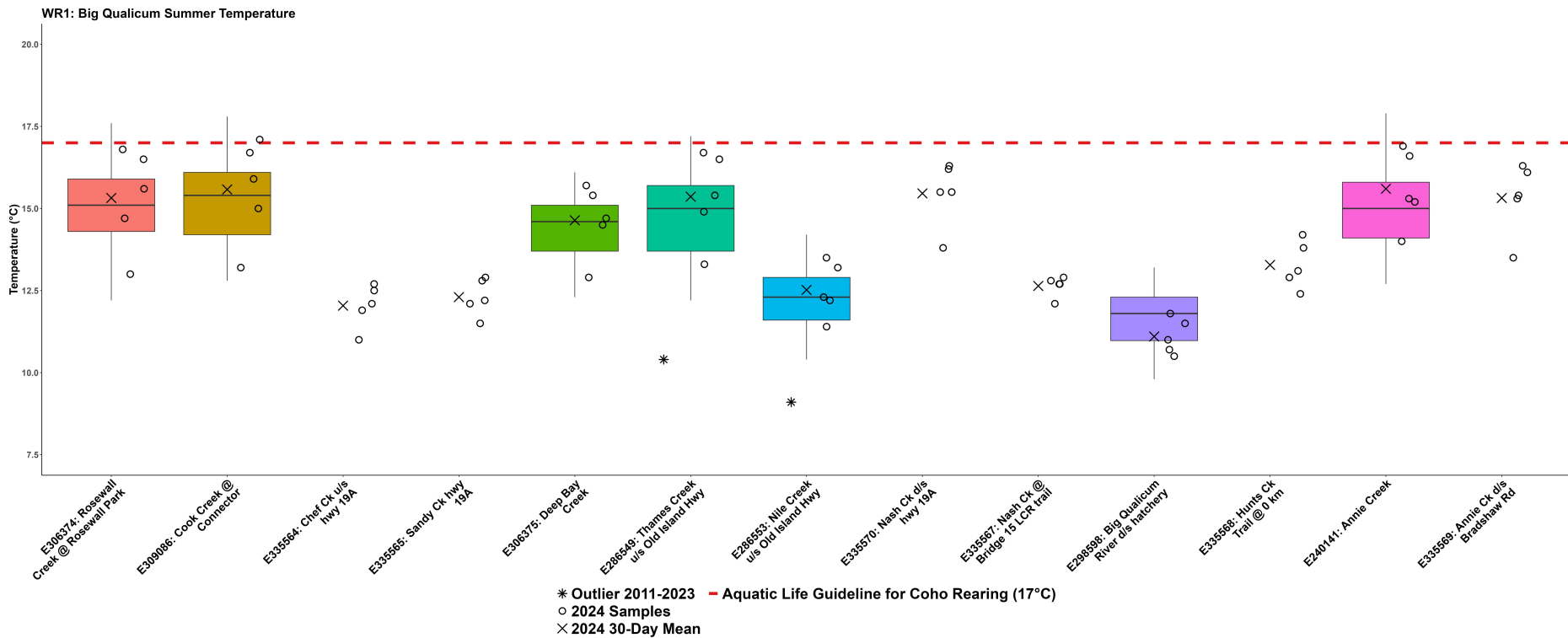


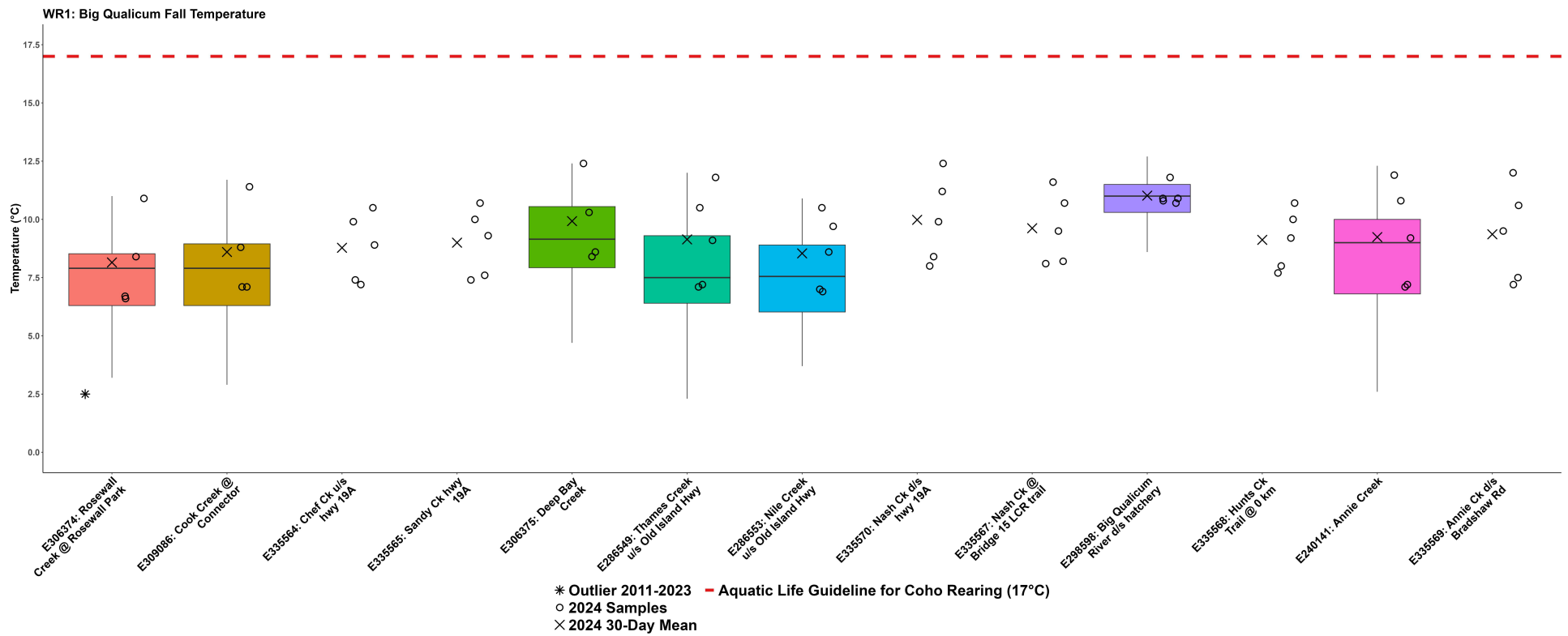


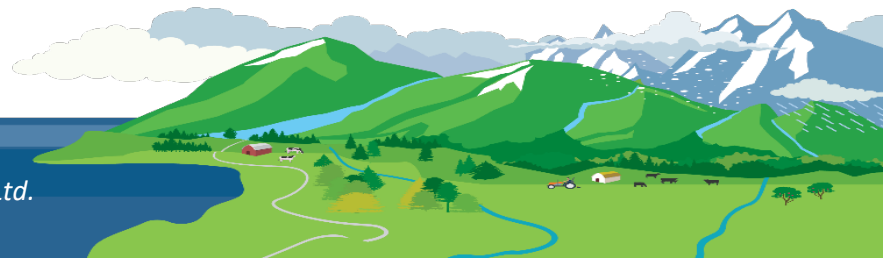
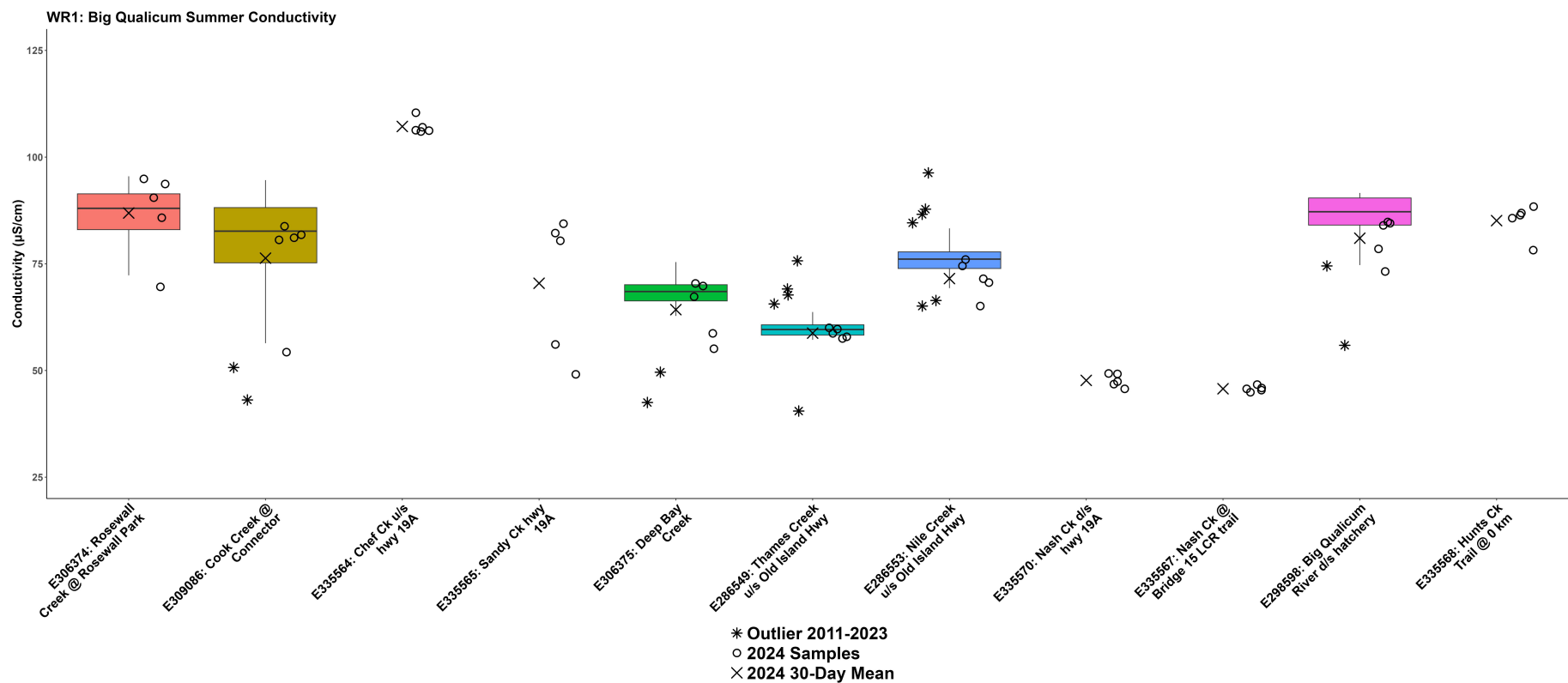


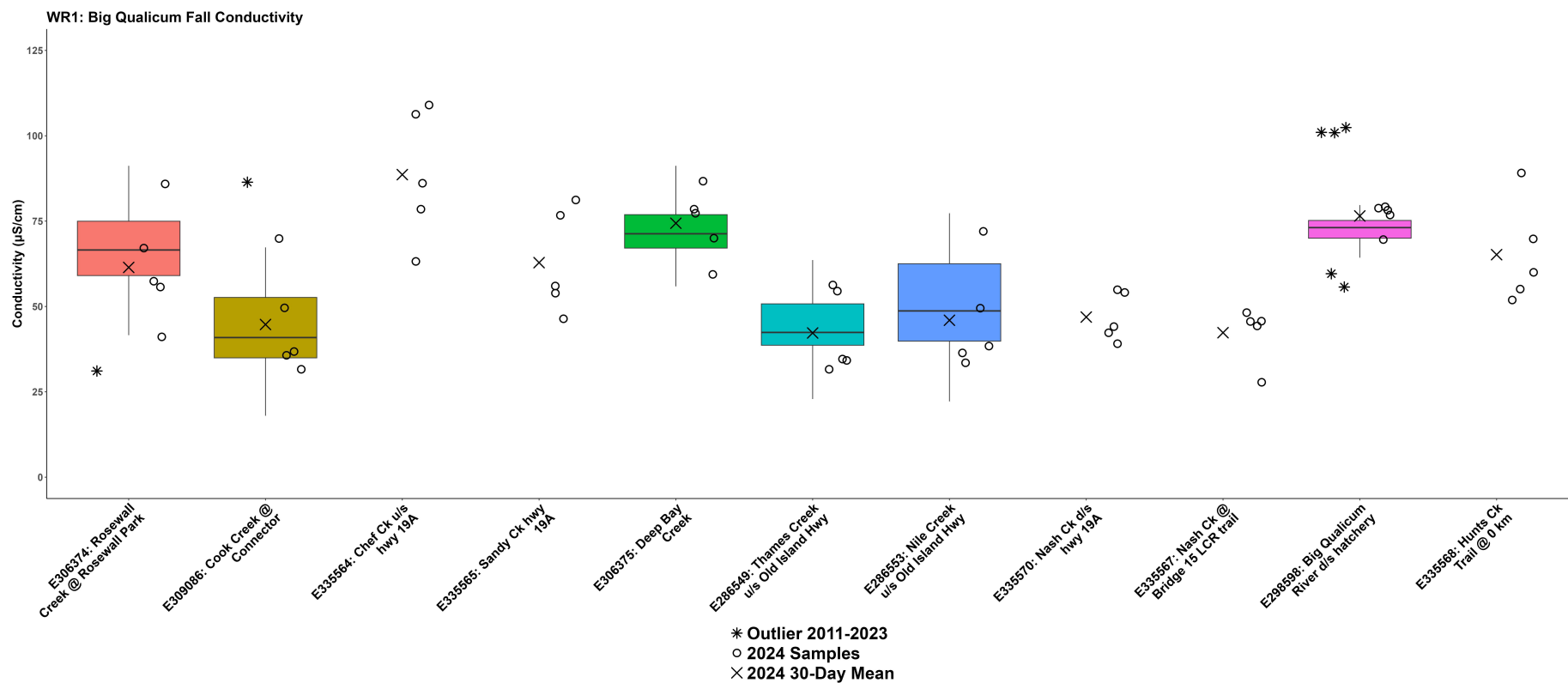


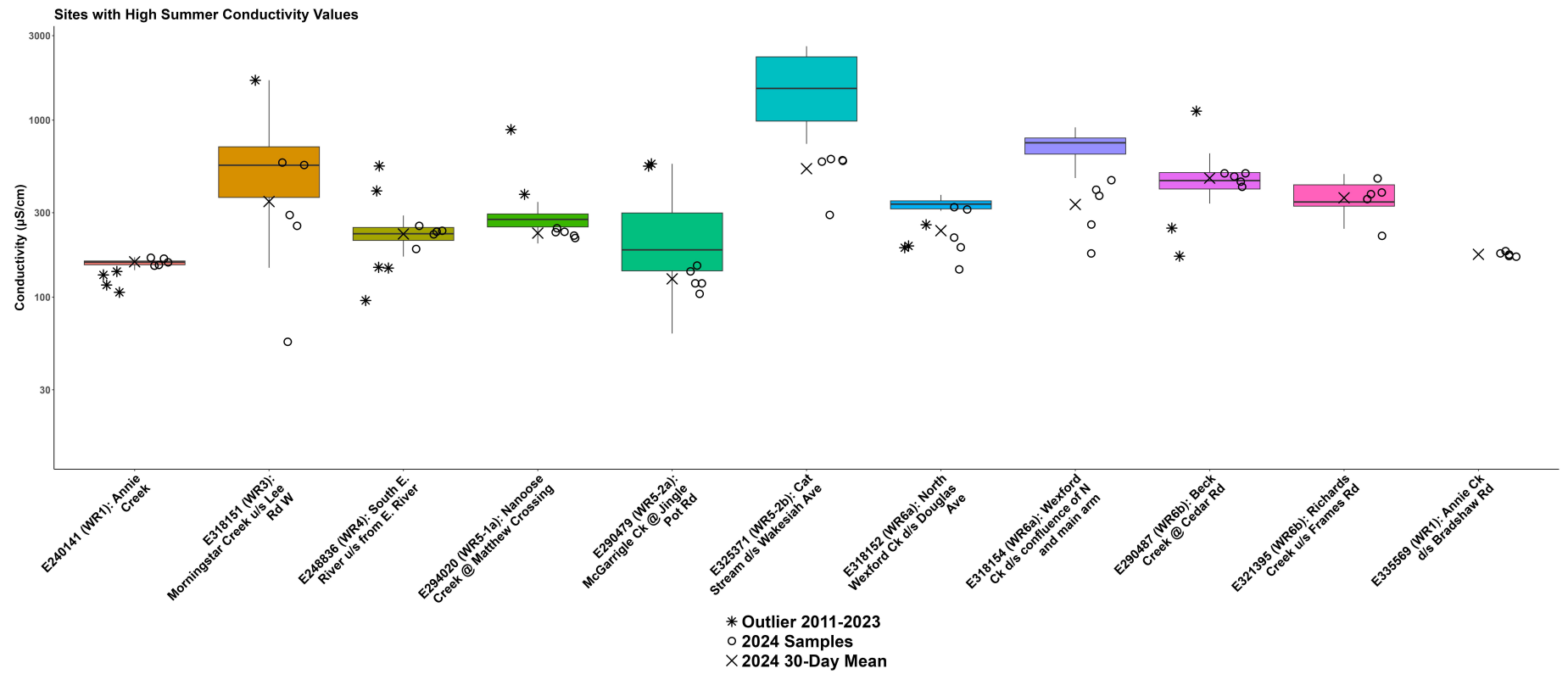


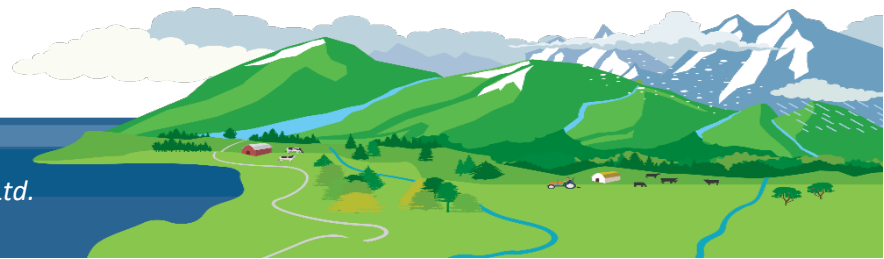
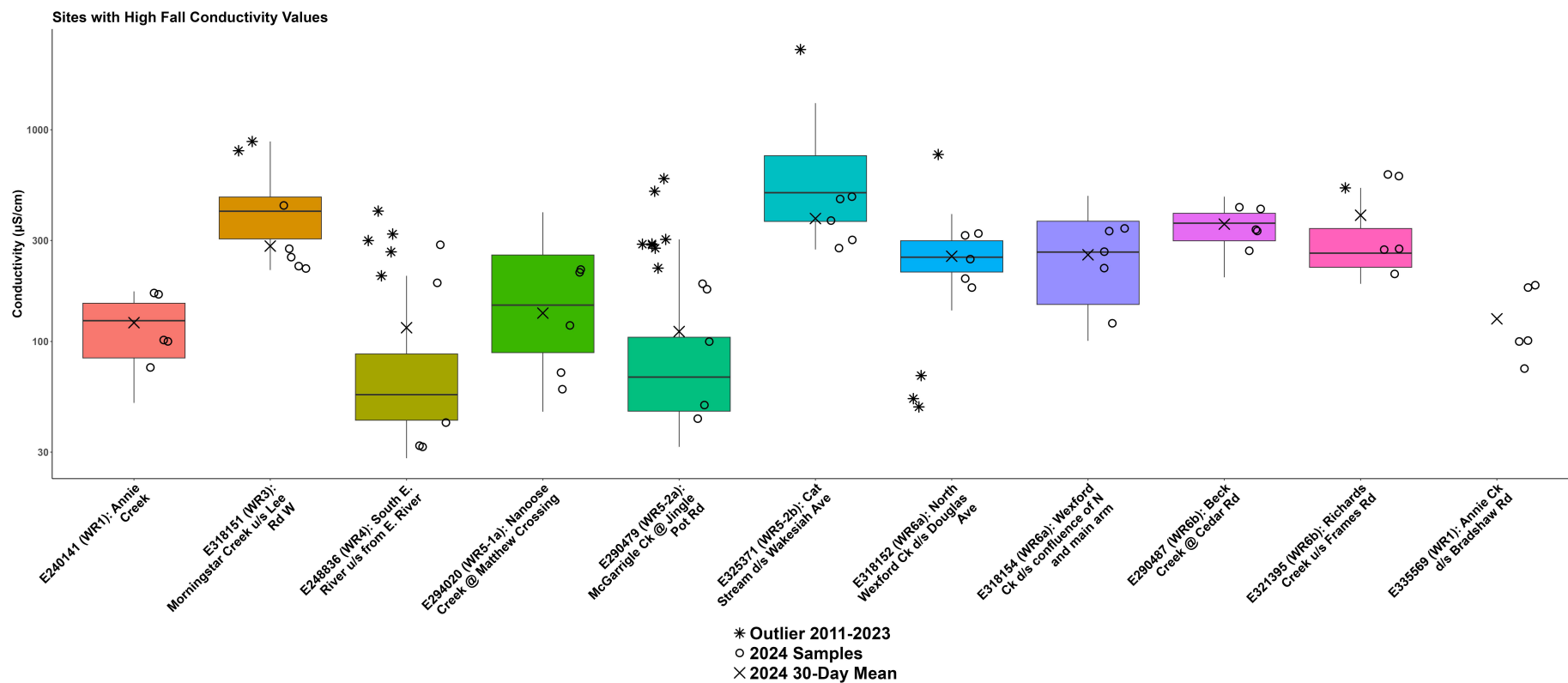


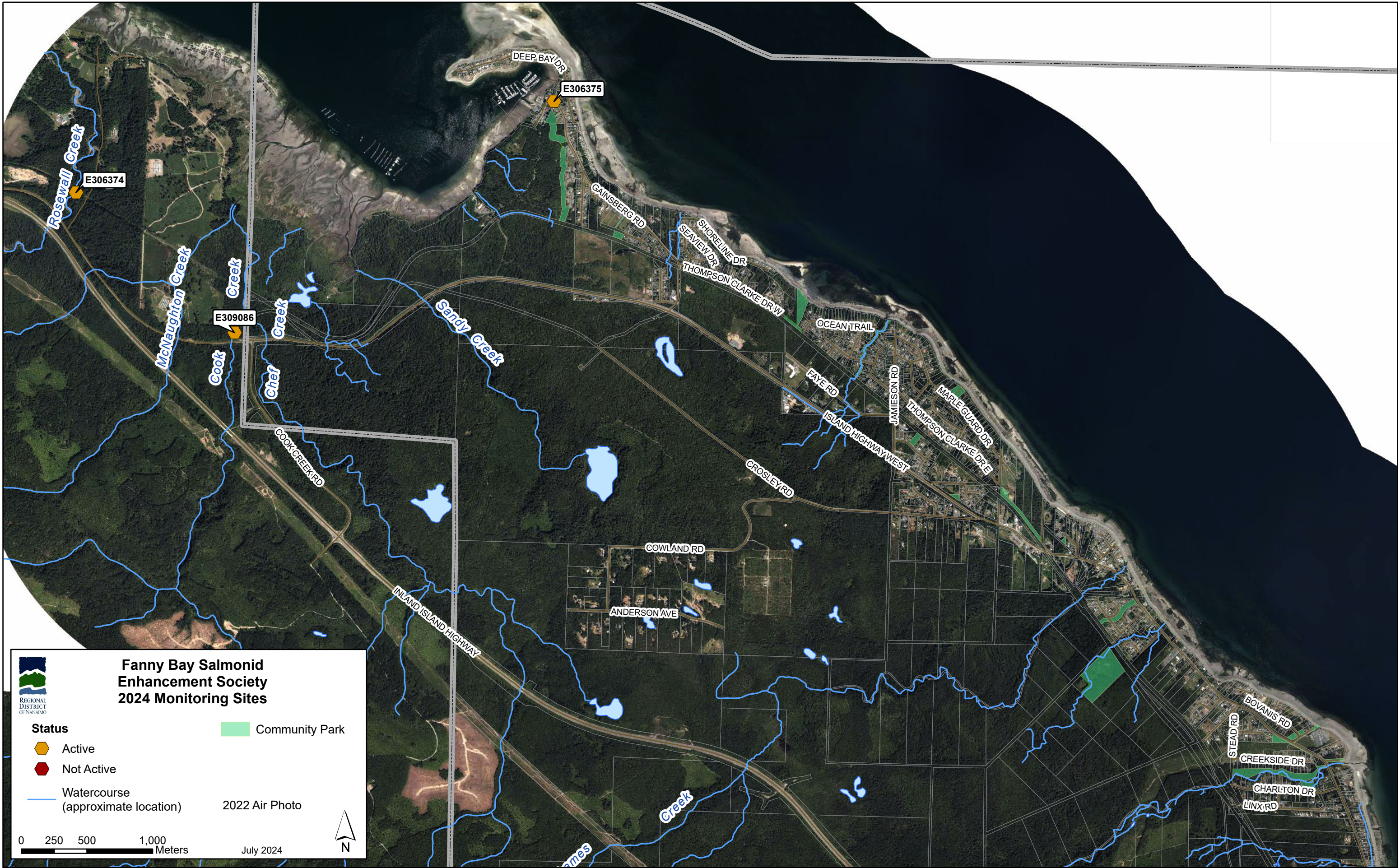




















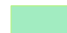
**Nile Creek Enhancement Society
2024 Monitoring Sites**

Status

 Active

 Not Active

 Watercourse
(approximate location)

 Community Park

2022 Air Photo

0


250

500

1,000

Meters

July 2024


N