

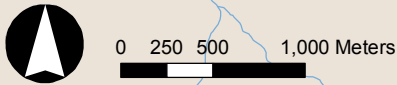
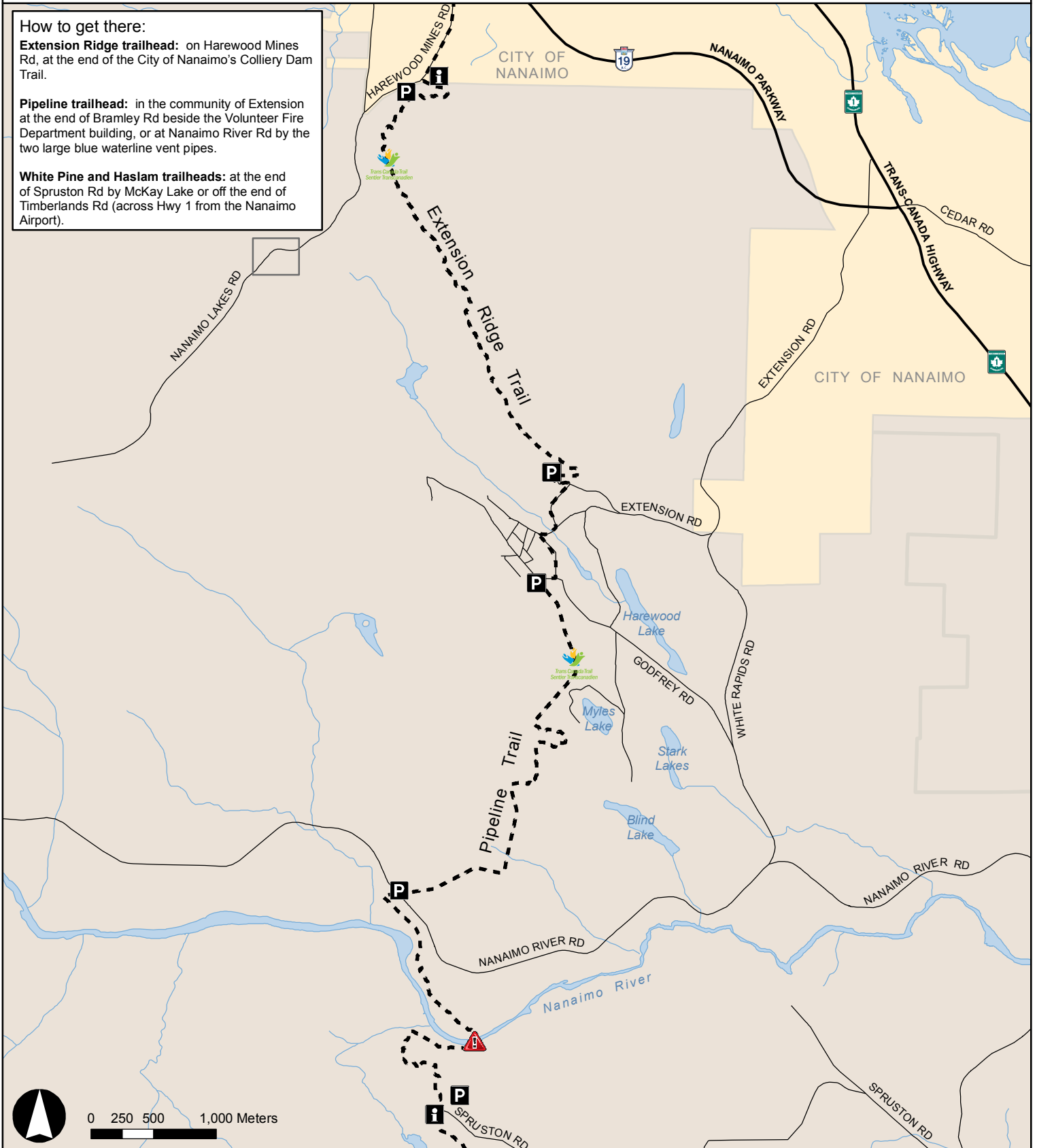
# TRANS CANADA TRAIL - NORTH MAP

**How to get there:**

**Extension Ridge trailhead:** on Harewood Mines Rd, at the end of the City of Nanaimo's Colliery Dam Trail.

**Pipeline trailhead:** in the community of Extension at the end of Bramley Rd beside the Volunteer Fire Department building, or at Nanaimo River Rd by the two large blue waterline vent pipes.

**White Pine and Haslam trailheads:** at the end of Spruston Rd by McKay Lake or off the end of Timberlands Rd (across Hwy 1 from the Nanaimo Airport).



- Kiosk
- No Bridge Crossing
- Private Property
- Parking
- Trans Canada Trail