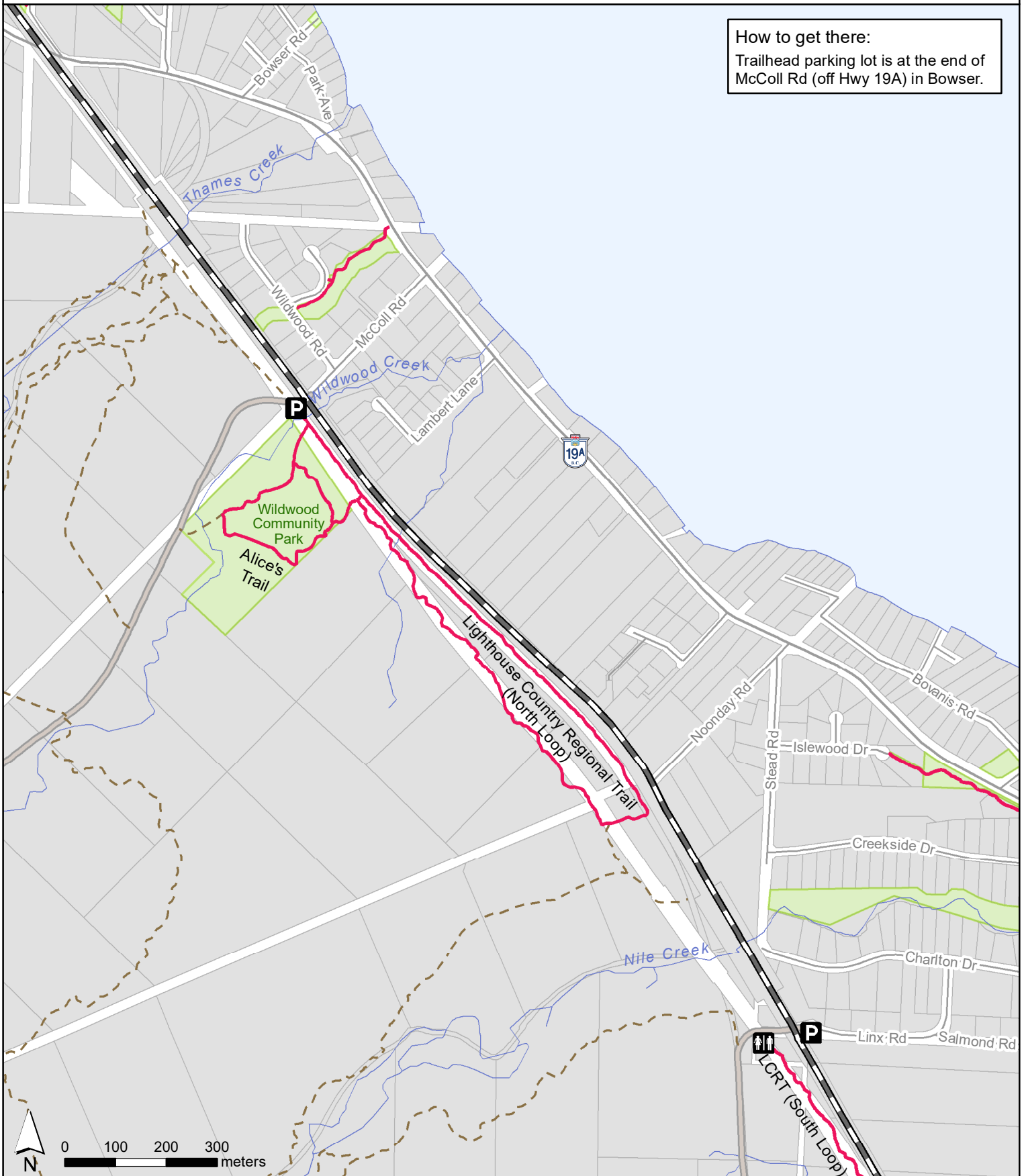


# LIGHTHOUSE COUNTRY REGIONAL TRAIL - NORTH LOOP

How to get there:  
 Trailhead parking lot is at the end of McColl Rd (off Hwy 19A) in Bowser.



- |                  |                        |             |                |
|------------------|------------------------|-------------|----------------|
| <b>P</b> Parking | RDN Recreational Trail | Gravel Road | Community Park |
| Vault Toilet     | Other Trail            | Railway     |                |