



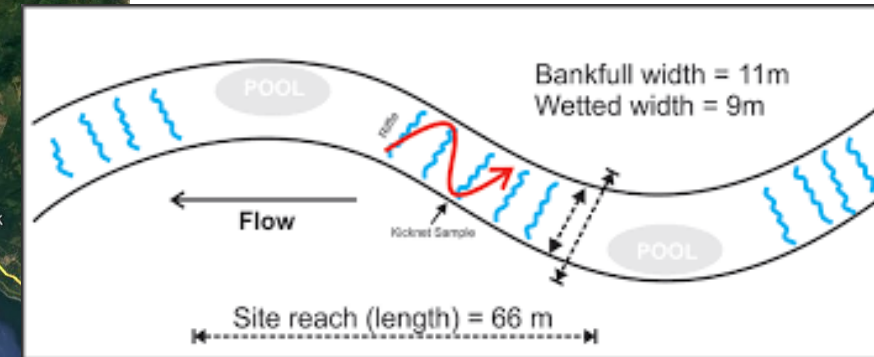
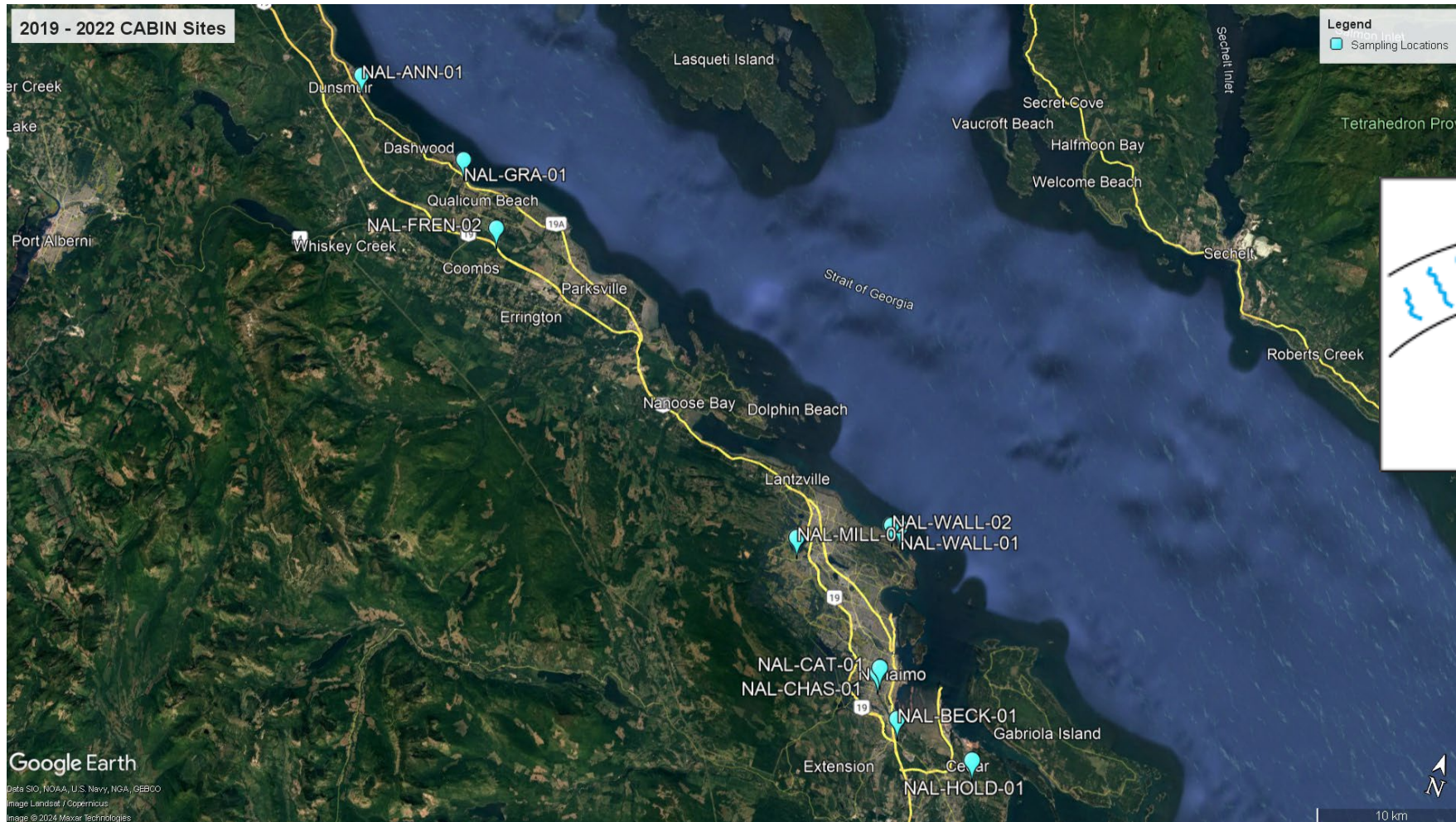
# 2019-2022 RDN Benthic Invertebrate analysis

Rosie Barlak

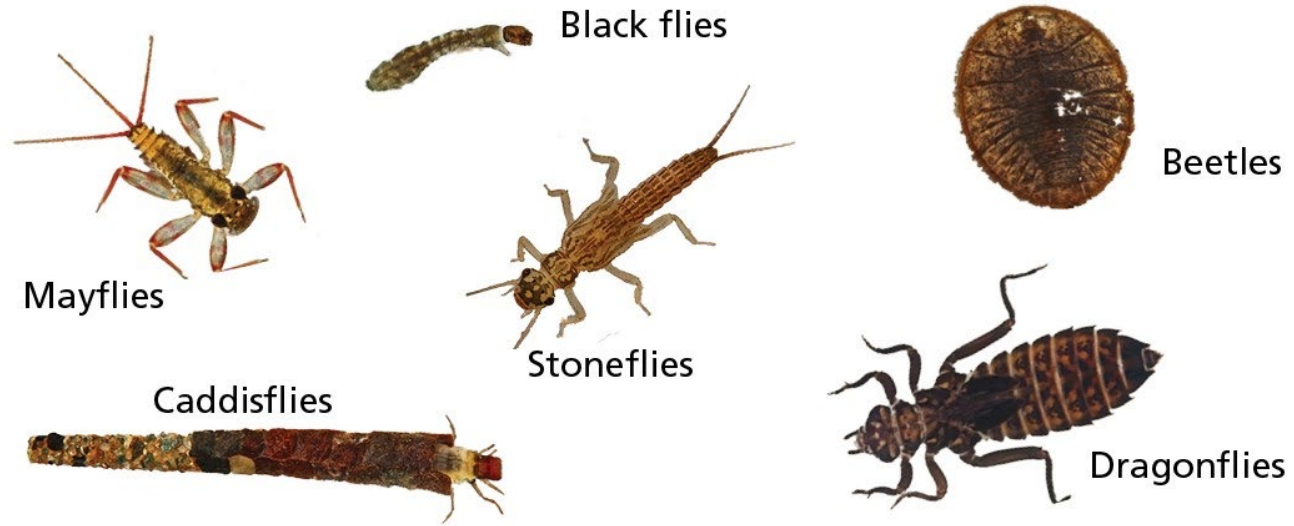
July 9, 2024

CWMN Results Session

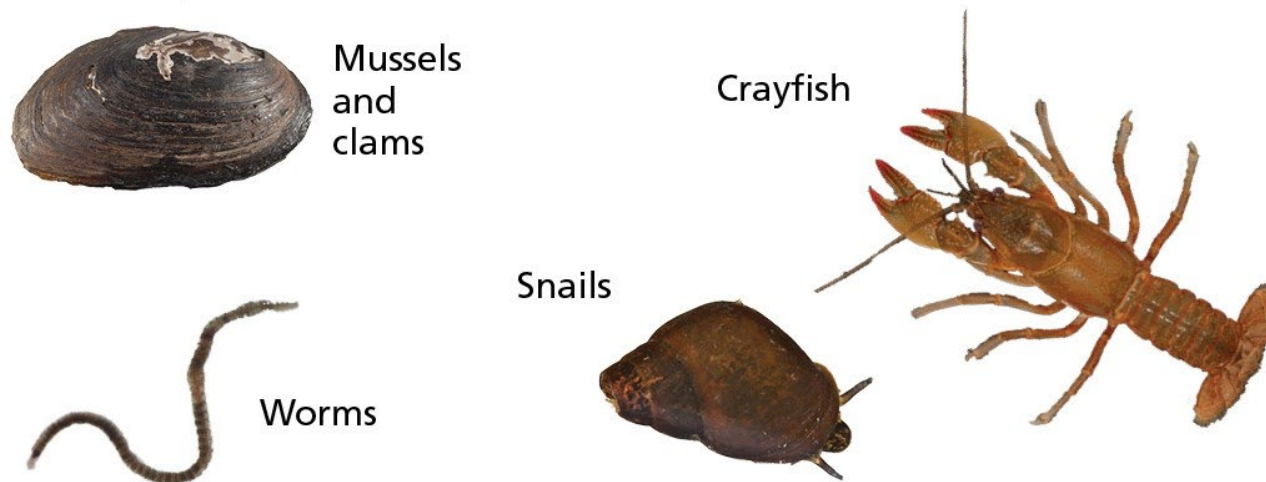
# Project Overview



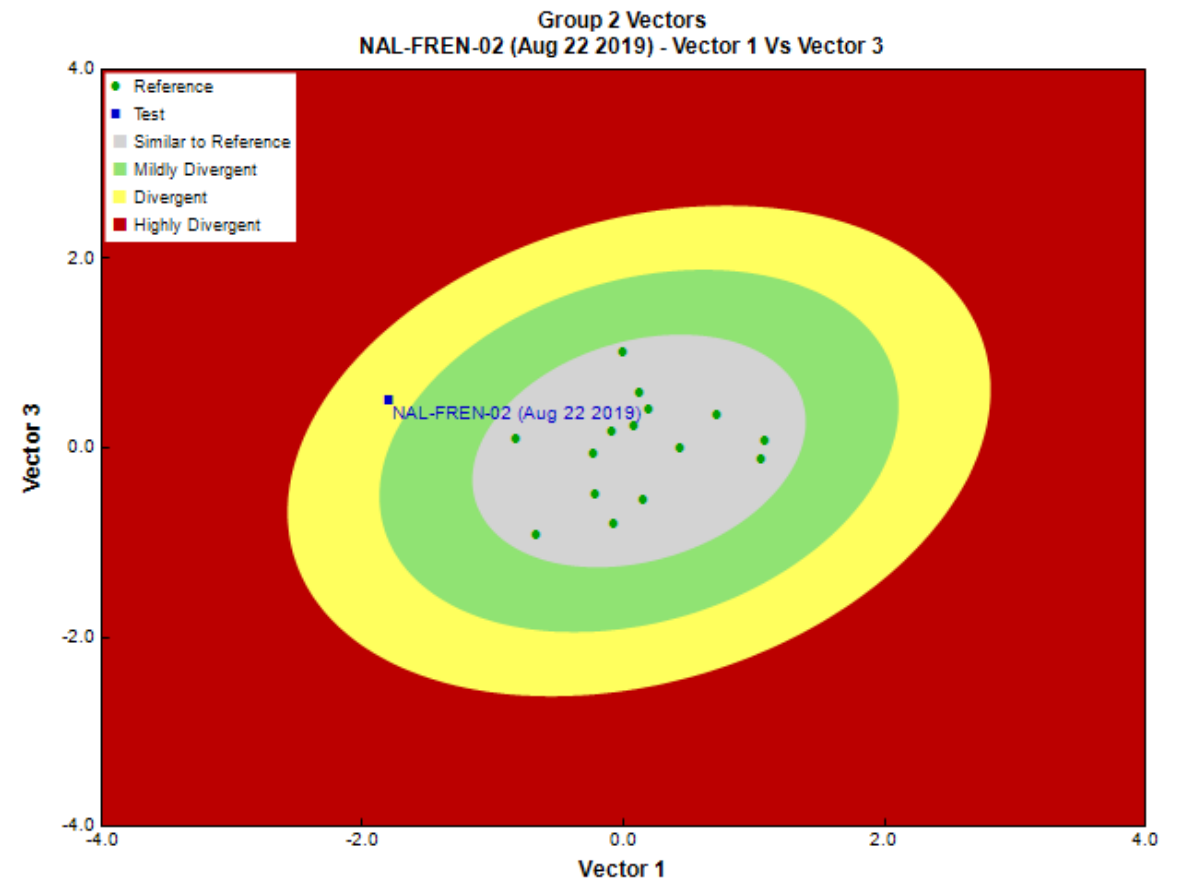
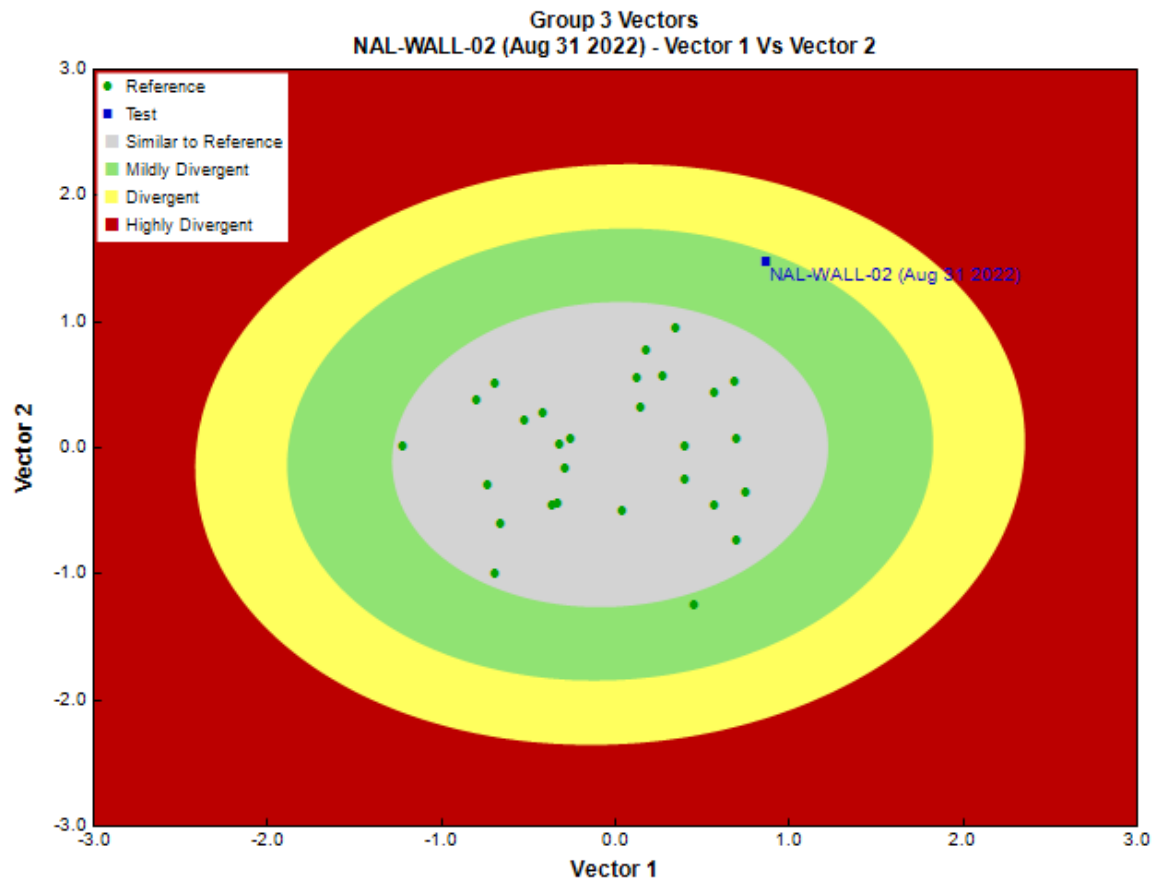
## Examples of insect macroinvertebrate larvae



## Examples of non-insect macroinvertebrates



# CABIN Model – Reference Condition Approach

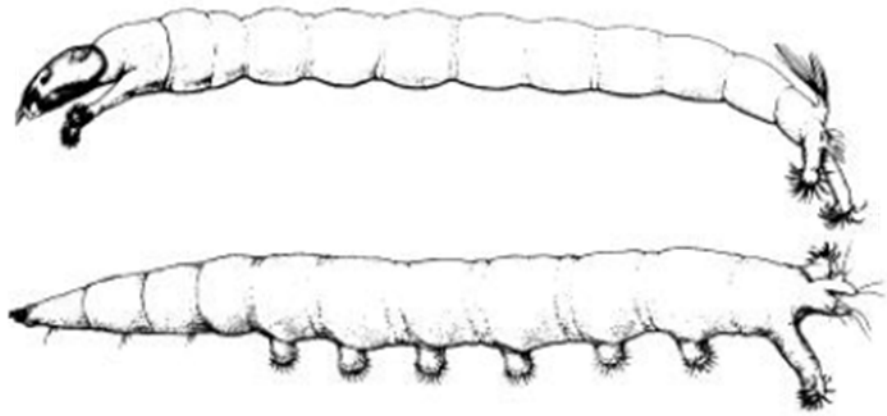


# Site Classification

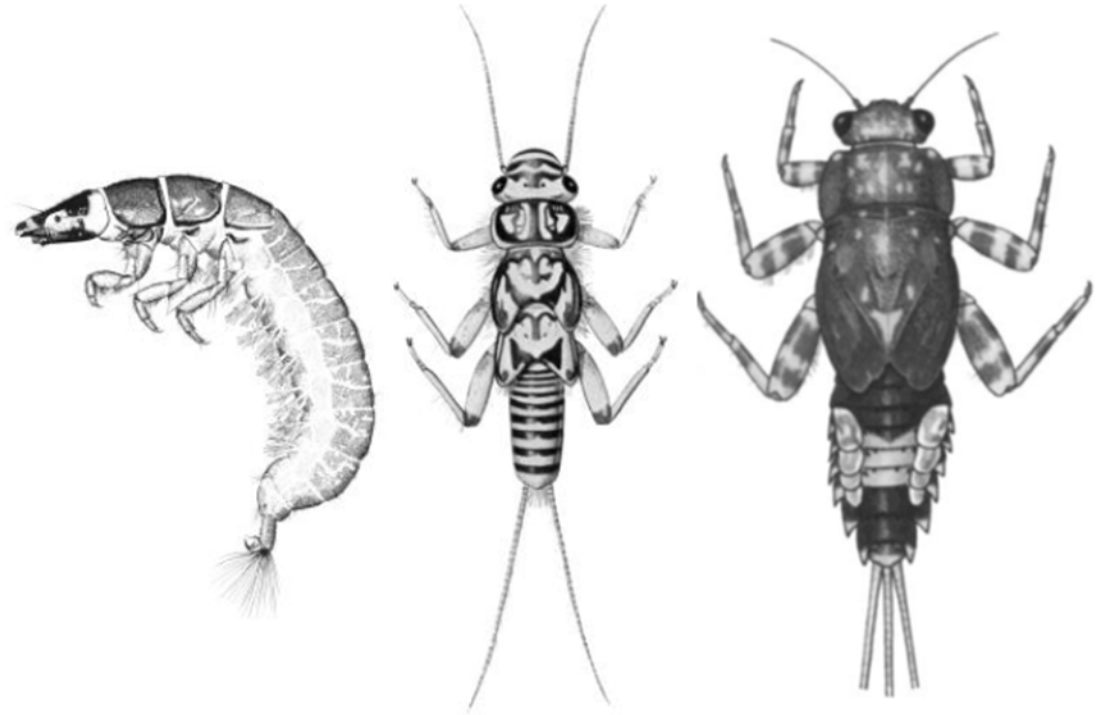
Site Code	Stream Name	CABIN Assessment
NAL-WALL-02	Walley Creek	<b>Mildly Divergent</b>
NAL-HOLD-01	Holden Creek	<b>Mildly Divergent</b>
NAL-CHAS-01	Chase River	<b>Mildly Divergent</b>
NAL-CAT-01	Cat Stream	<b>Mildly Divergent</b>
NAL-BECK-01	Beck Creek	<b>Mildly Divergent</b>
NAL-ANN-01	Annie Creek	<b>Mildly Divergent</b>
NAL-WALL-01	Walley Creek	<b>Divergent</b>
NAL-GRA-01	Grandon Creek	<b>Divergent</b>
NAL-FREN-02	French Creek	<b>Divergent</b>
NAL-MILL-01	Millstone River	<b>Highly Divergent</b>



## Diptera – True Flies

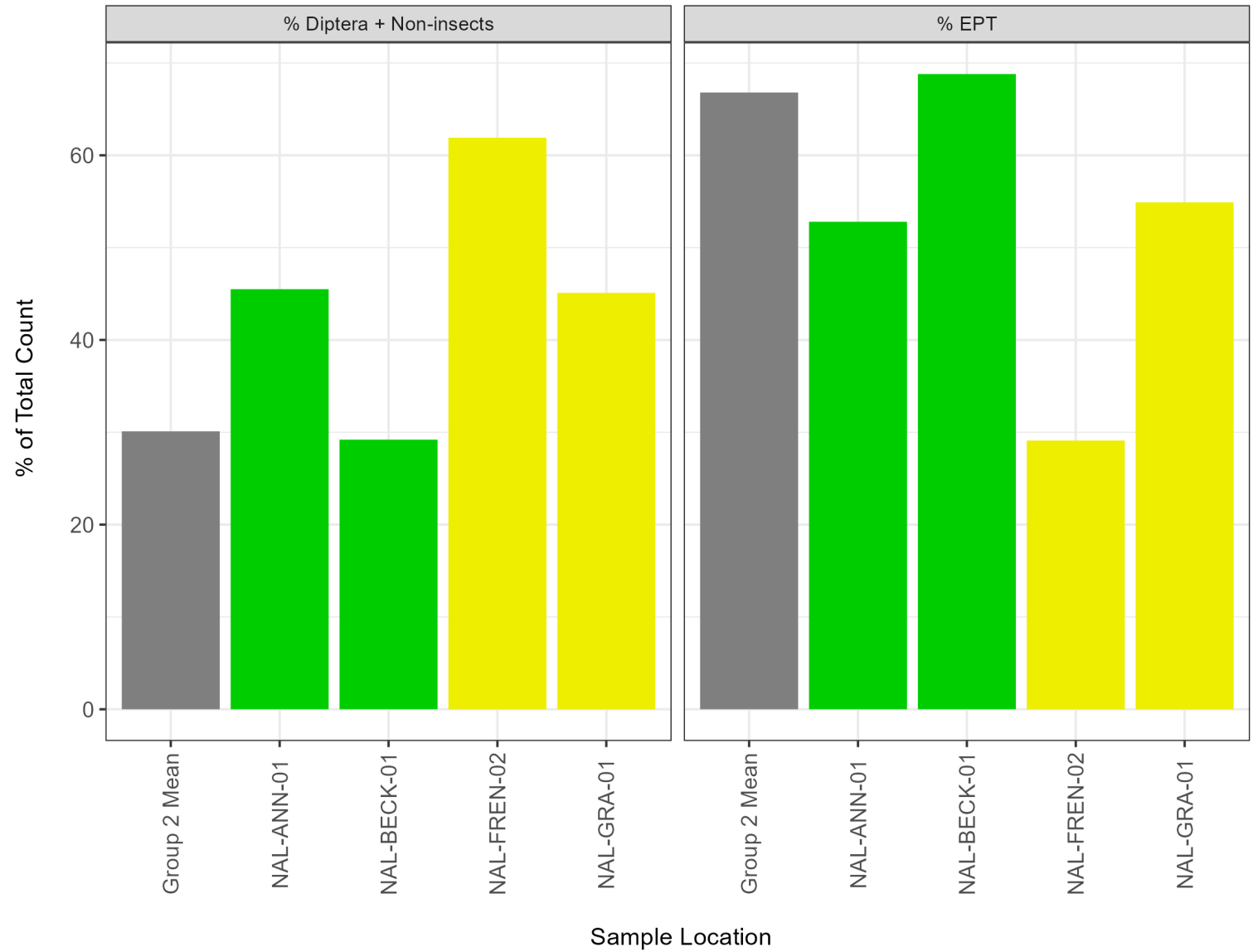


## Ephemeroptera, Plecoptera and Trichoptera (EPT)



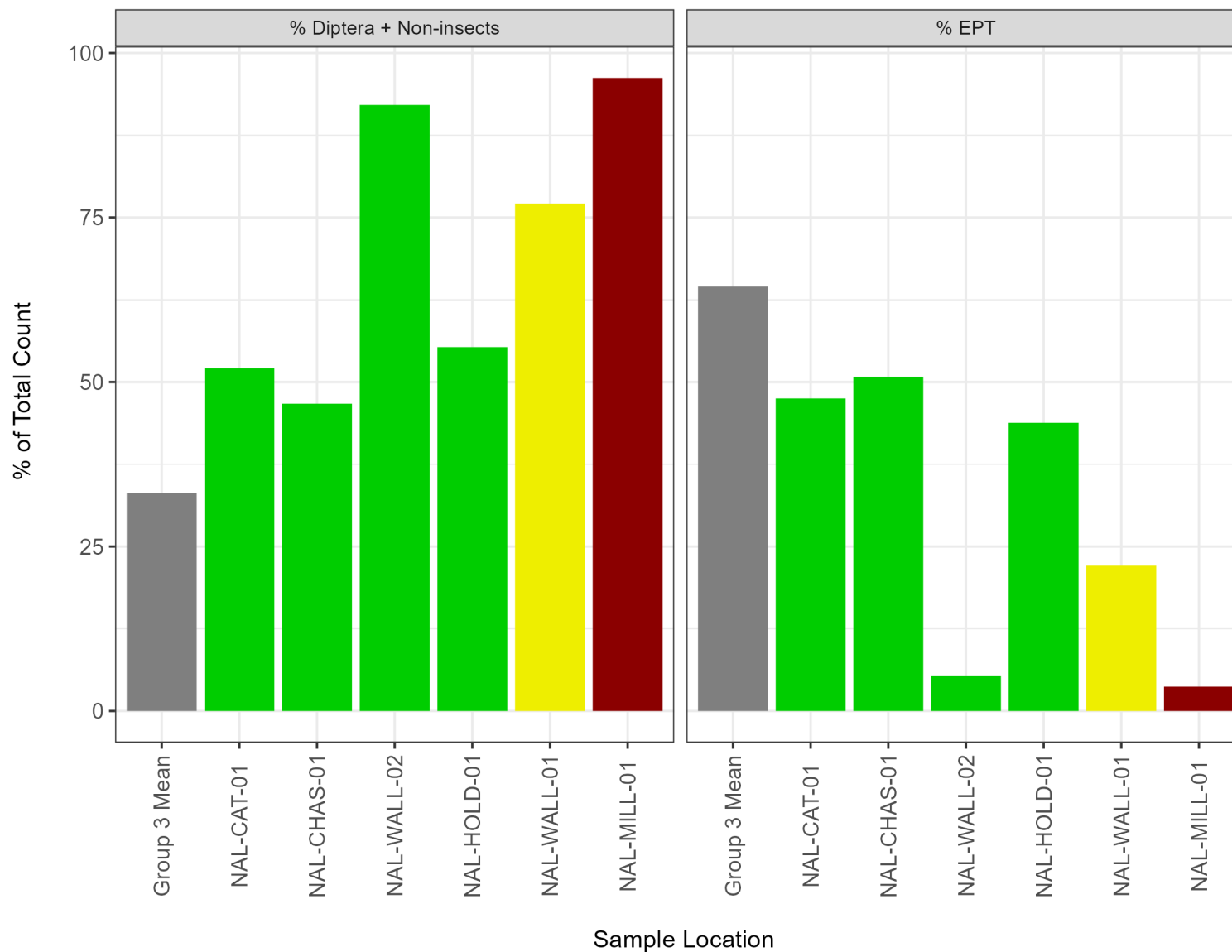
# Benthic Invertebrates - Group 2

## CABIN Benthic Invertebrate Summary - Group 2



# Benthic Invertebrates - Group 3

### CABIN Benthic Invertebrate Summary - Group 3







# Summary