

# EVACUATION ALERT

## *Wesley Ridge Wildfire*

Date: **Aug 2, 2025** & Time: **12:40 AM**

This Evacuation Alert is by **Regional District of Nanaimo** due to **Wesley Ridge Wildfire**.

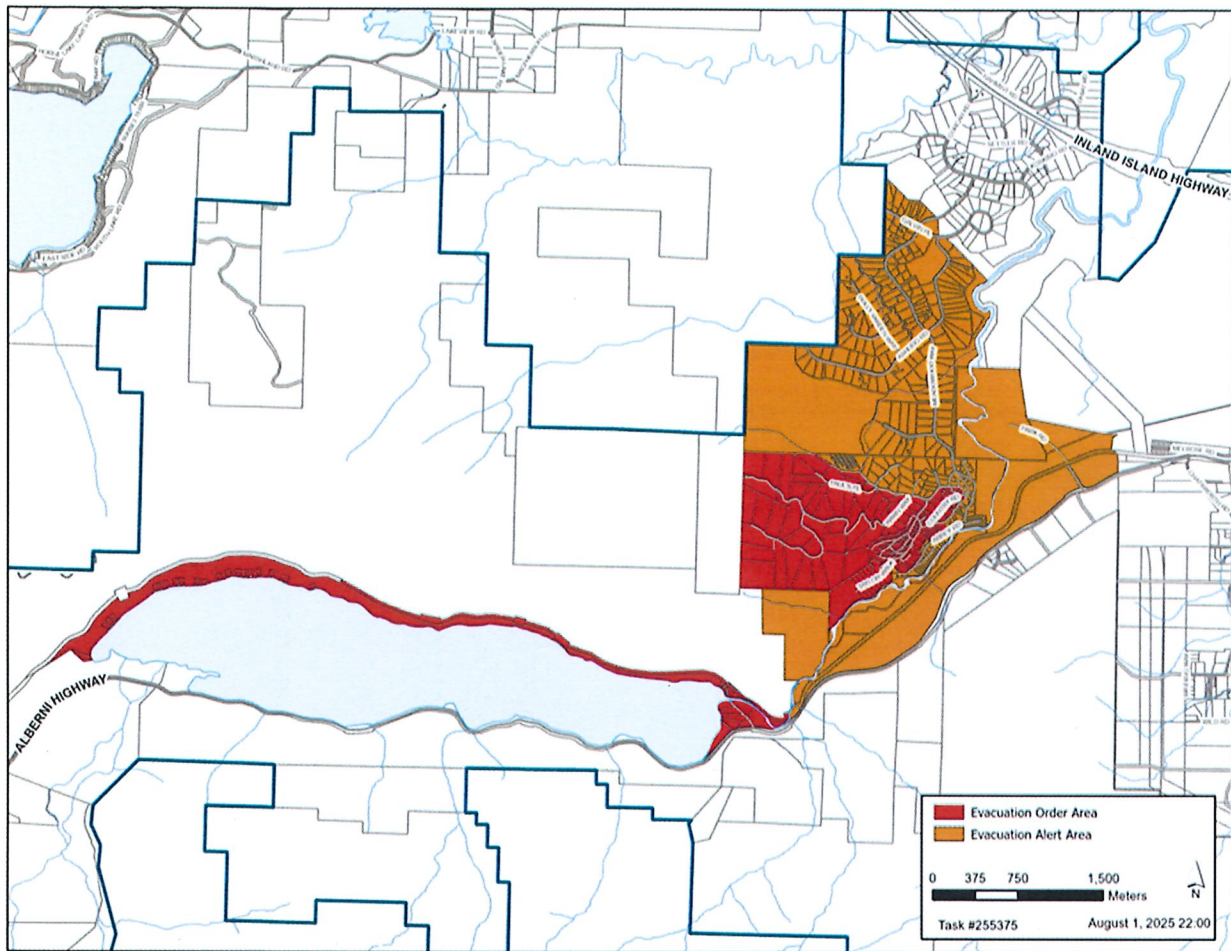
This Alert REPLACES the Alert Issued on August 1<sup>st</sup> at 21:30. Please be aware that a separate ORDER is also in place for this event.

Because of the potential threats to health, safety, and the welfare of persons, this **Evacuation Alert** is issued for the following areas:

### **Electoral Area F**

#### **Little Qualicum River Village Addresses Noted Below**

Road	From	To
ABBEY RD	1628	1830
ASHLING RD	1650	1990
CAMERON CRES	1745	1796
COUNTRY RD	1634	1640
DOLLY VARDEN WAY	1370	1485
EASY WAY	1635	1644
FARRAH'S WAY	1600	1625
GALVIN PL	1800	1897
LAURA'S LOOP	1601	1601
LEWIS LANE	1610	1637
MEADOWOOD WAY	1211	1760
PADY PL	1545	1592
PELIGREN PL	1675	1719
PIERCE WAY	1870	1926
SPIRIT WAY	1670	1736
WESLEY RIDGE PL	1720	1800
WYATT'S WAY	1645	1670



This evacuation alert is issued to prepare you to evacuate your premises or property should an evacuation order be made. Residents will be given as much advance notice as possible before evacuation is ordered; however, you may receive limited notice due to changing conditions.

Further information will be issued later today. You can also visit [www.rdn.bc.ca/current-alerts](http://www.rdn.bc.ca/current-alerts) or [www.EmergencyInfoBC.ca](http://www.EmergencyInfoBC.ca) for more information.

**Murray Walters / General Manager of  
Regional and Community Utilities  
Director, Emergency Operations Centre  
Regional District of Nanaimo**

## WHAT YOU SHOULD DO:

- Locate all family members and designate a meeting area outside the evacuation alert area, should an evacuation order be made while family members are separated.
- Pack essential items such as government-issued ID, medications, important documents (e.g., insurance, and mortgage / tenancy information), and immediate care needs for dependents.

- Prepare to evacuate disabled persons, children, and/or neighbours if assistance is needed.
- Prepare to take pets with you and move livestock to a safe area (if possible).
- Arrange transportation for all your household members. Fill the gas tanks of personal vehicles that will be used in the evacuation. If transportation assistance will be needed to evacuate, call **(250) 390-6538**.
- Review your home or tenant insurance policy to understand what coverage you may have for lodging and food in the event of being evacuated. Most basic insurance policies cover living expenses during an evacuation.
- Arrange accommodation for all members of the residence. If possible, plan to stay with family or friends as accommodations may be in short supply.
- If you will require government assistance to meet your basic needs if evacuated, like lodging and food, Emergency Support Services will be available. Create a profile at [ess.gov.bc.ca](https://ess.gov.bc.ca).

Wait for an evacuation order to be issued before evacuating. If you evacuate before being directed or authorized, you may not yet qualify for Emergency Support Services should you need it, as resources will be focused on those who have been ordered to evacuate.

- Monitor [www.rdn.bc.ca/current-alerts](https://www.rdn.bc.ca/current-alerts) for information on evacuation orders and the location of reception centre(s). If you can meet your own basic needs if evacuated, you do not need to go to a reception centre.