



AMENDED and UPDATED EVACUATION ALERT

Wesley Ridge Wildfire

Date: **Aug 1, 2025** & Time: **15:00 PM**

This Evacuation Alert is by **Regional District of Nanaimo** due to **Wesley Ridge Wildfire**.

Because of the potential threats to health, safety, and the welfare of persons, this **Evacuation Alert** is issued for the following areas:

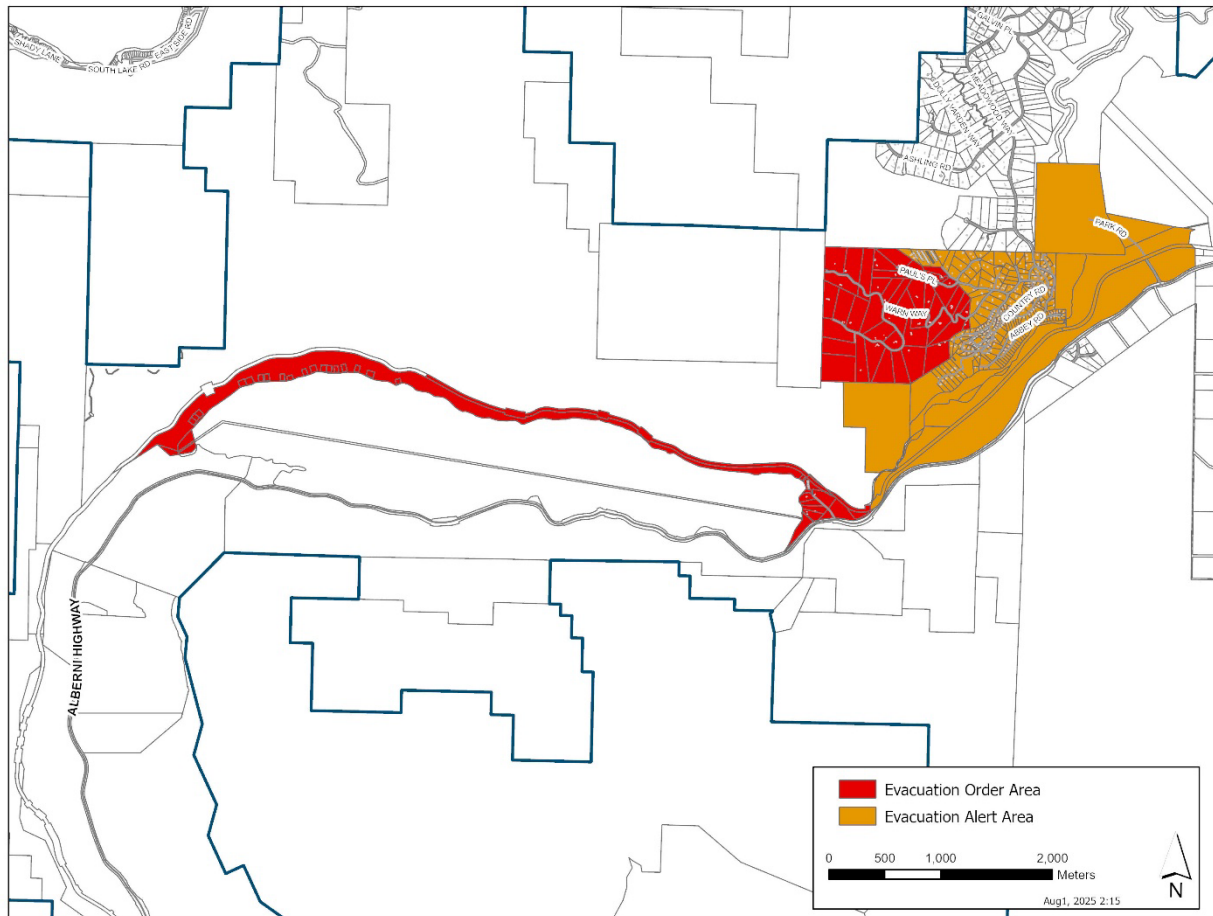
Electoral Area F

NEW Little Qualicum Falls Provincial Park

NEW Little Qualicum Falls Campground and Day Use Areas

Little Qualicum River Village addresses remaining on Alert noted below

1628 to 1830	ABBEY RD		1550 to 1601	LAURA'S LOOP
1745 to 1796	CAMERON CRES		1610 to 1637	LEWIS LANE
1778 to 1816	CANUCK CRES		1734 to 1874	MARTINI WAY
1634 to 1795	COUNTRY RD		1610 to 1851	MEADOWOOD WAY
1731 to 1747	DAR'S PL		1715 to 1735	MIAMA COURT
1767 to 1811	DUNWURKIN WAY		1545 to 1592	PADY PL
1635 to 1644	EASY WAY		1675 to 1719	PELIGREN PL
1600 - 1625	FARRAH'S WAY		1670 to 1748	SPIRIT WAY
1767 to 1790	JAY BELL TRAIL		1821 to 1883	TAYLOR WALK
1704 to 1723	KAREN'S COURT		1700 to 1718	WARN WAY
1675 and 1690	KYM'S CRES		1645 to 1670	WYATT'S WAY
1671 to 1696	LAILAH'S LOOP			



This evacuation alert is issued to prepare you to evacuate your premises or property should an evacuation order be made. Residents will be given as much advance notice as possible before evacuation is ordered; however, you may receive limited notice due to changing conditions.

Further information will be issued later today. You can also visit www.rdn.bc.ca/current-alerts or www.EmergencyInfoBC.ca for more information.

Douglas Holmes
Chief Administrative Officer
Director, Emergency Operations Centre
Regional District of Nanaimo

WHAT YOU SHOULD DO:

- Locate all family members and designate a meeting area outside the evacuation alert area, should an evacuation order be made while family members are separated.
- Pack essential items such as government-issued ID, medications, important documents (e.g., insurance, and mortgage / tenancy information), and immediate care needs for dependents.
- Prepare to evacuate disabled persons, children, and/or neighbours if assistance is needed.
- Prepare to take pets with you and move livestock to a safe area (if possible).
- Arrange transportation for all your household members. Fill the gas tanks of personal vehicles that will be used in the evacuation. If transportation assistance will be needed to evacuate, call **(250) 390-6538**.
- Review your home or tenant insurance policy to understand what coverage you may have for lodging and food in the event of being evacuated. Most basic insurance policies cover living expenses during an evacuation.
- Arrange accommodation for all members of the residence. If possible, plan to stay with family or friends as accommodations may be in short supply.
- If you will require government assistance to meet your basic needs if evacuated, like lodging and food, Emergency Support Services will be available. Create a profile at ess.gov.bc.ca.

Wait for an evacuation order to be issued before evacuating. If you evacuate before being directed or authorized, you may not yet qualify for Emergency Support Services should you need it, as resources will be focused on those who have been ordered to evacuate.

- Monitor [Homepage | RDN](#) for information on evacuation orders and the location of reception centre(s). If you can meet your own basic needs if evacuated, you do not need to go to a reception centre.