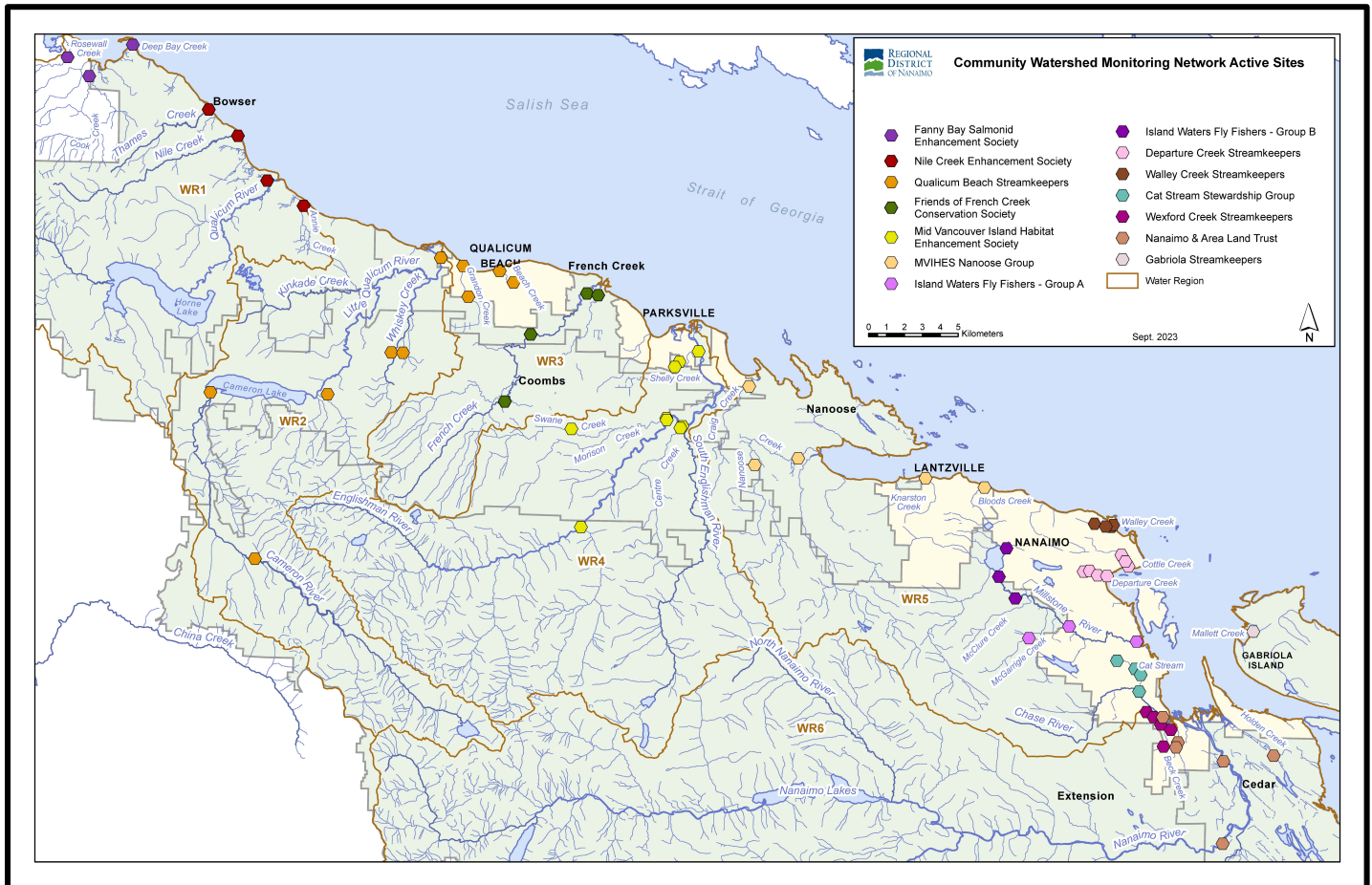


# Community Watershed Monitoring Network 2023 Results by Water Region



Included in Water Region (WR) 1 package:

1. CWMN WR1 sample sites
2. How to interpret a box plot
3. Box Plot Comparison – 2023 data to previous years: *displayed by parameter (Turbidity, Dissolved Oxygen, Temperature, Conductivity) & sample period (summer, fall)*
4. FBSES CWMN map of sample sites
5. NCES CWMN map of sample sites



Water Region 1  
sampled by:

**Fanny Bay Salmonid Enhancement Society (FBSES)**  
&  
**Nile Creek Enhancement Society (NCES)**

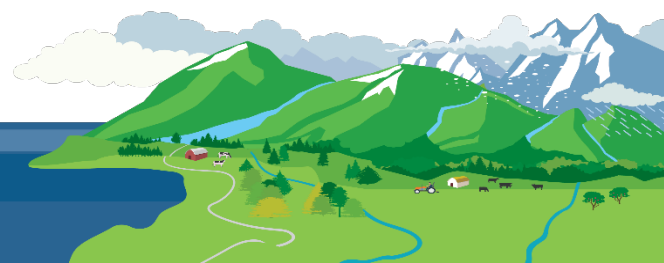


## WR1 CWMN Sample Sites:

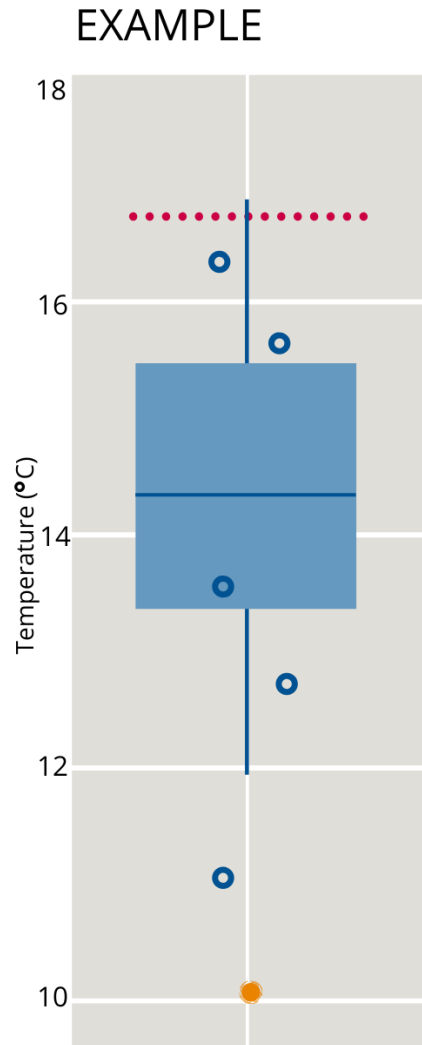
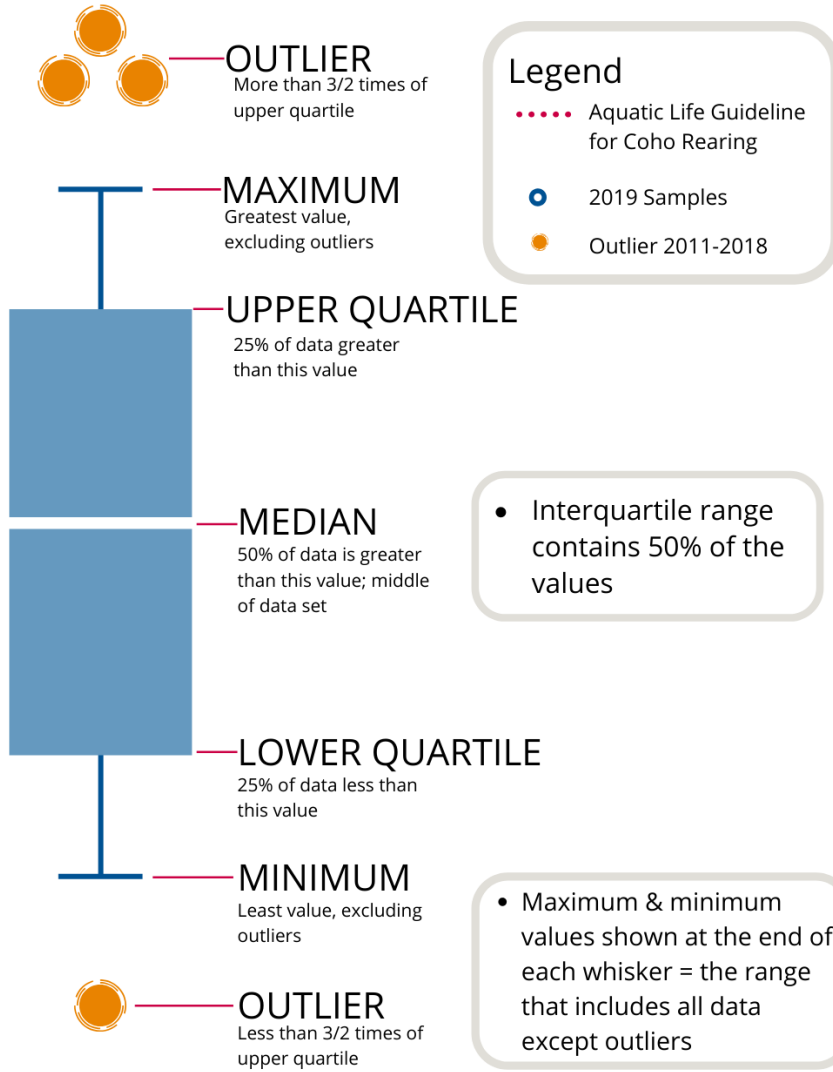
The table below shows the sites monitored by each of the streamkeeper organizations, as well as the number of years and which years a site was sampled. The number of years is important to keep in mind when interpreting the box plots as the plot for each site may contain a slightly different temporal range.

Group	EMS ID	Geographic Description	Years Sampled	Years Monitored
FBSES	E306374	Rosewall Creek @ Rosewall Creek Park	8	2016 – present
FBSES	E309086	Cook Creek at Old Island Hwy Connector	7	2017 – present
FBSES	E306375	Deep Bay Creek	8	2016 – present
NCES / FBSES	E286553	Nile Creek @ <u>Rosepark Rd</u> (50m u/s Old Island Hwy)	12	2011 – present <sup>^</sup>
NCES	E286549	Thames Creek 200m u/s Old Island Hwy	8	2011 – present <sup>*</sup>
NCES	E298598	Big Qualicum River about 700m d/s hatchery	8	2014 – present <sup>~</sup>
NCES	E240141	Annie Creek	8	2014 – present <sup>~</sup>

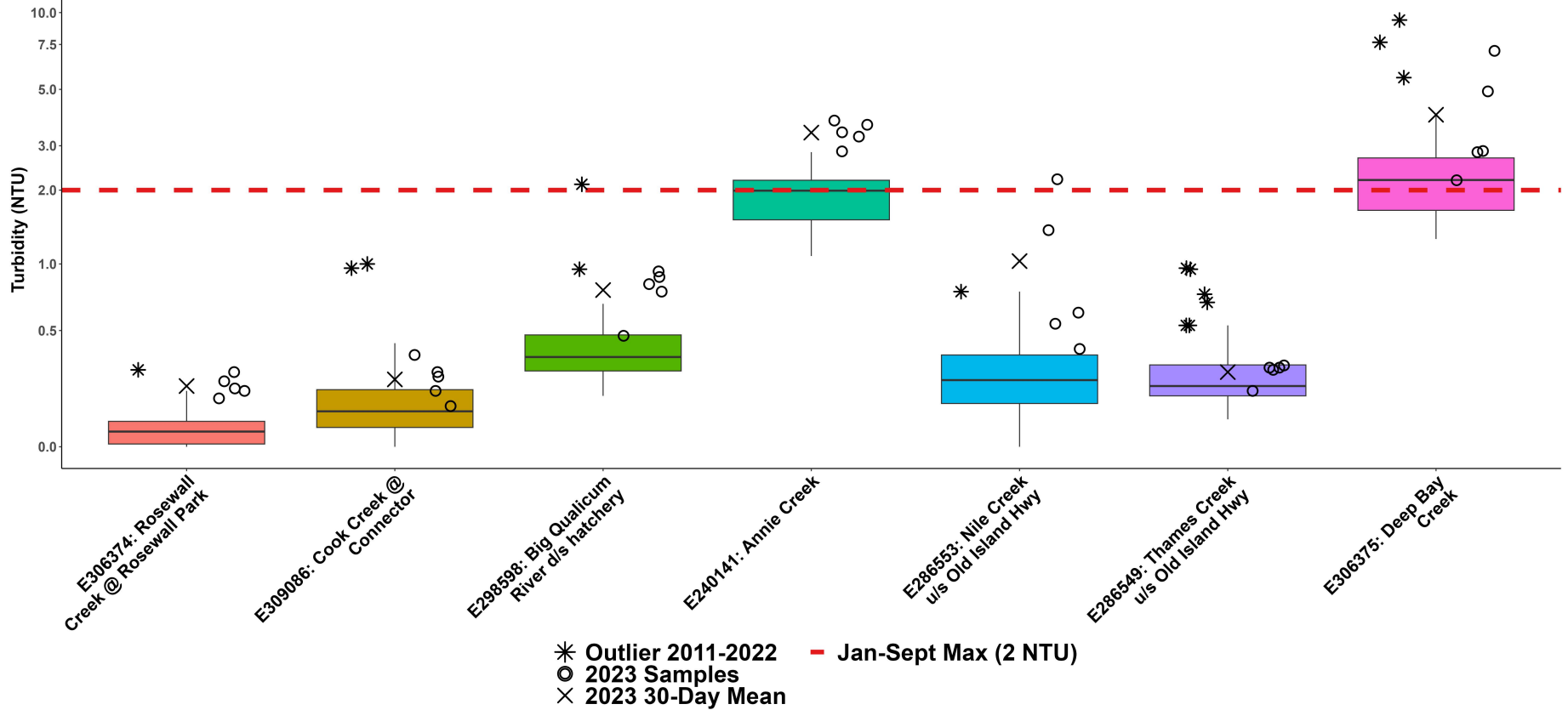
WR1 notes for the number of years sampled: <sup>^</sup>2016 not sampled; <sup>\*</sup>2014, 2015 and 2019 not sampled; <sup>~</sup>2019 and 2022 not sampled.



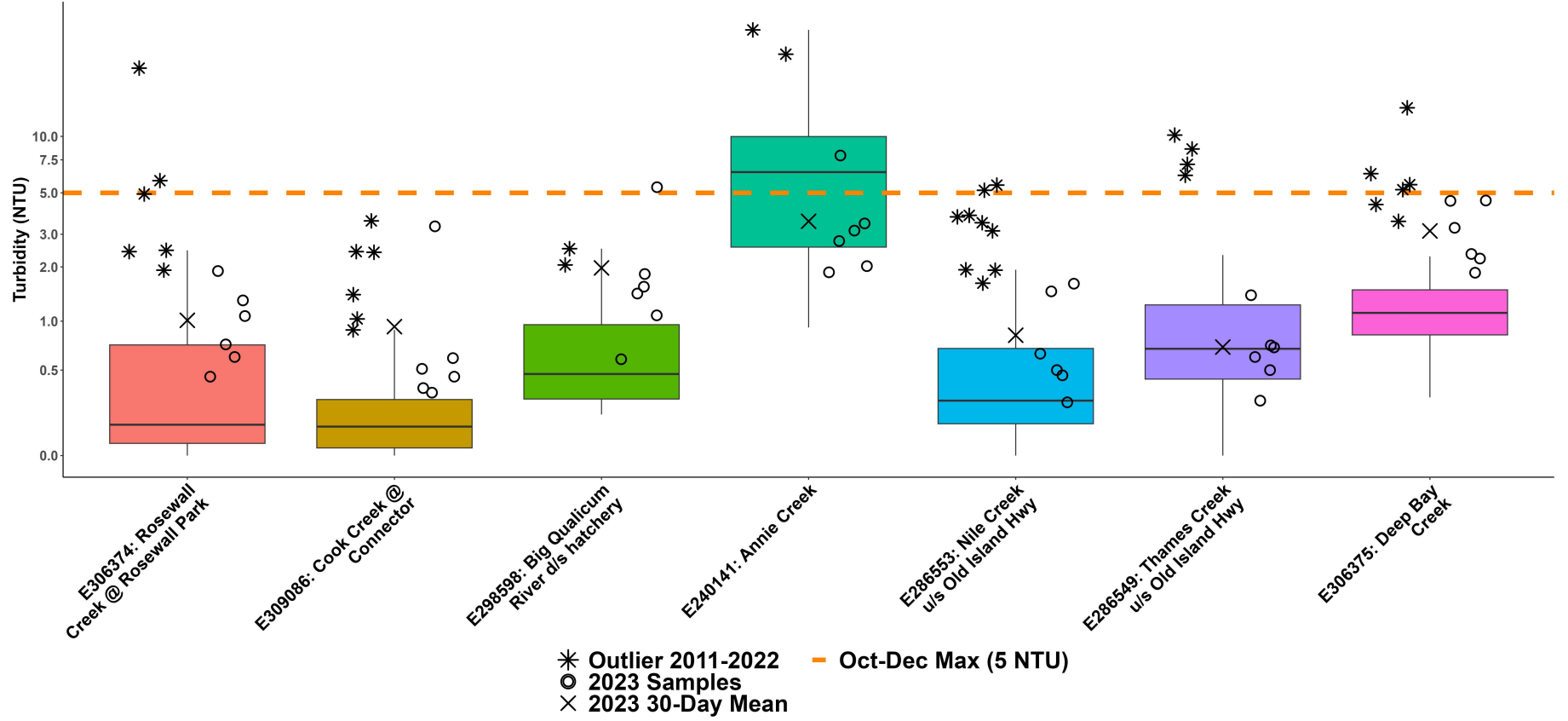
# How to Interpret a Box Plot:



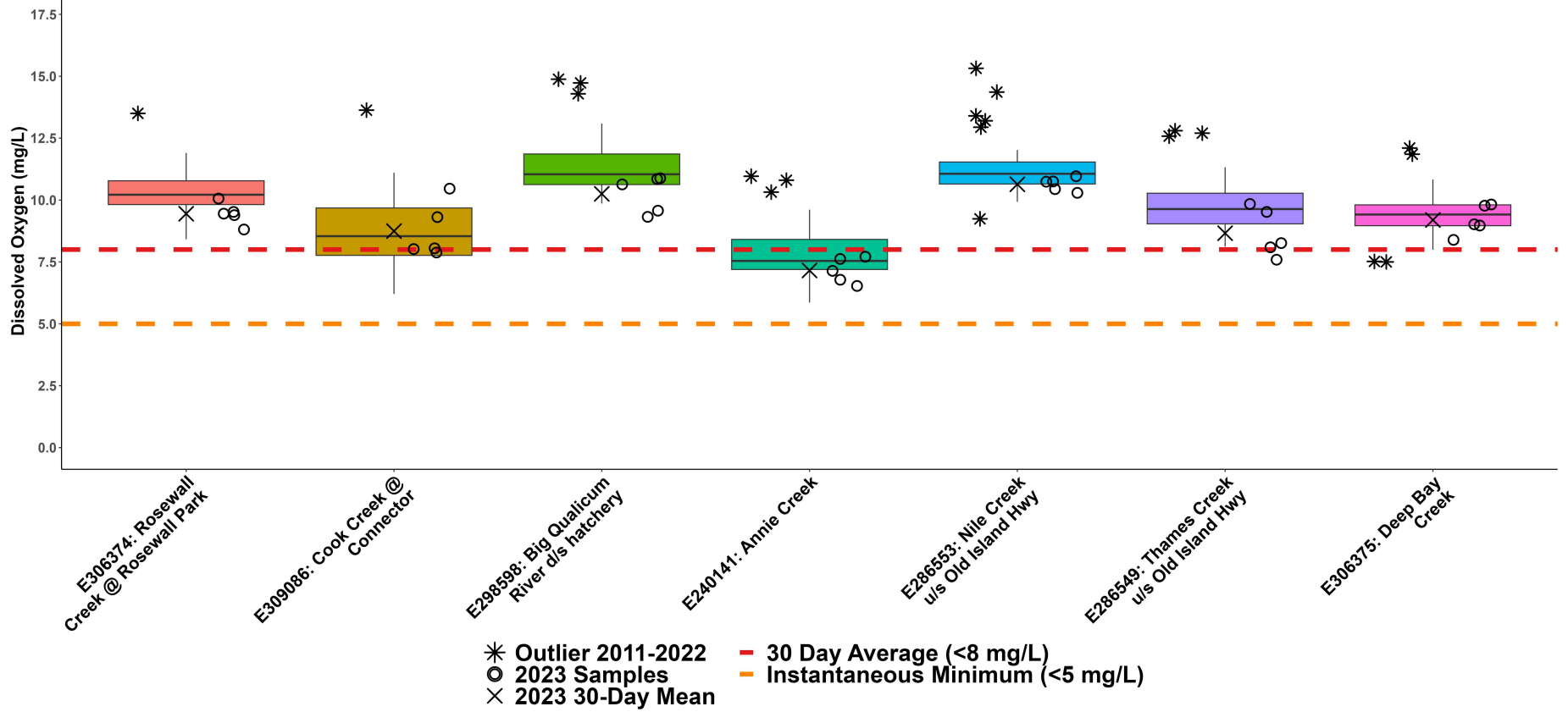
### WR1: Big Qualicum Summer Turbidity



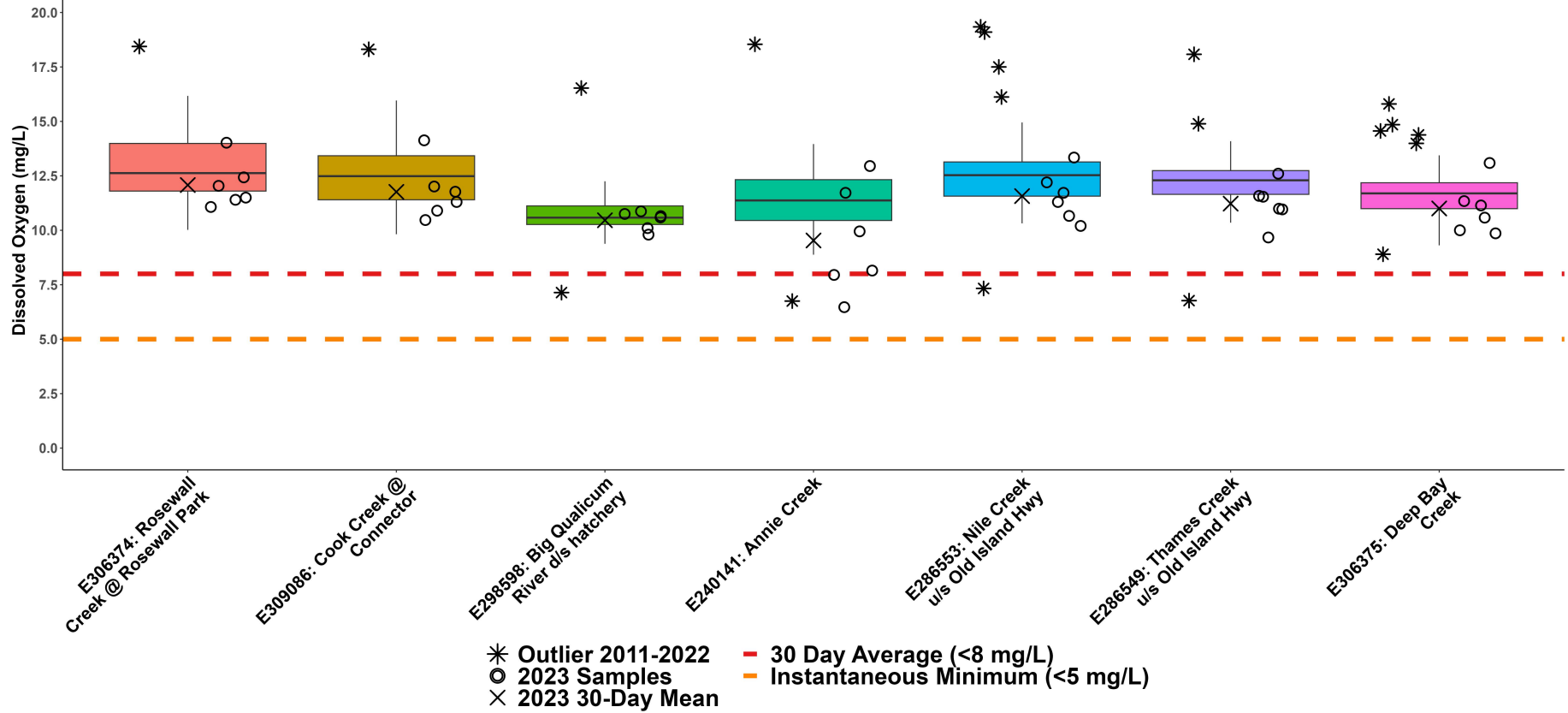
**WR1: Big Qualicum Fall Turbidity**



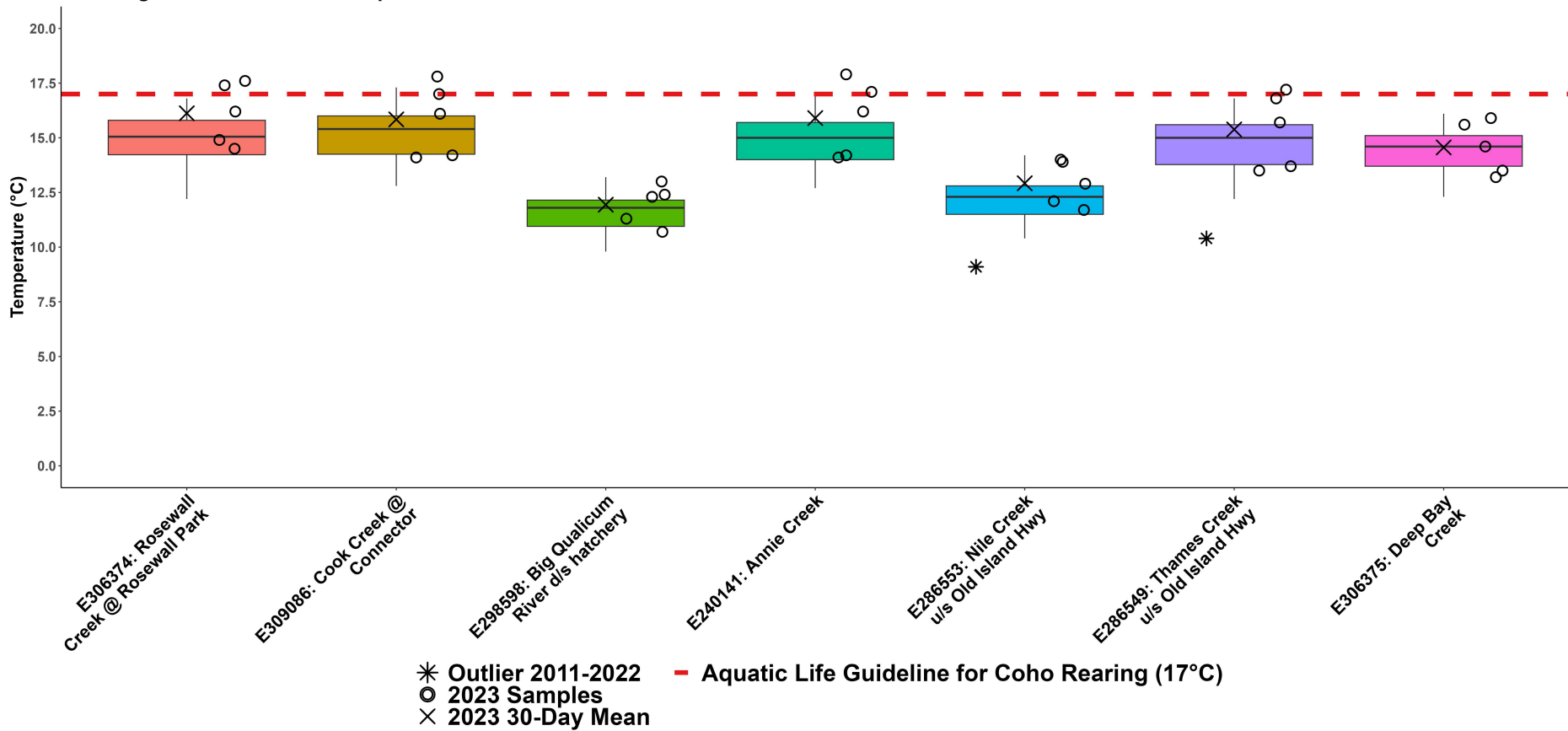
### WR1: Big Qualicum Summer Dissolved Oxygen



WR1: Big Qualicum Fall Dissolved Oxygen

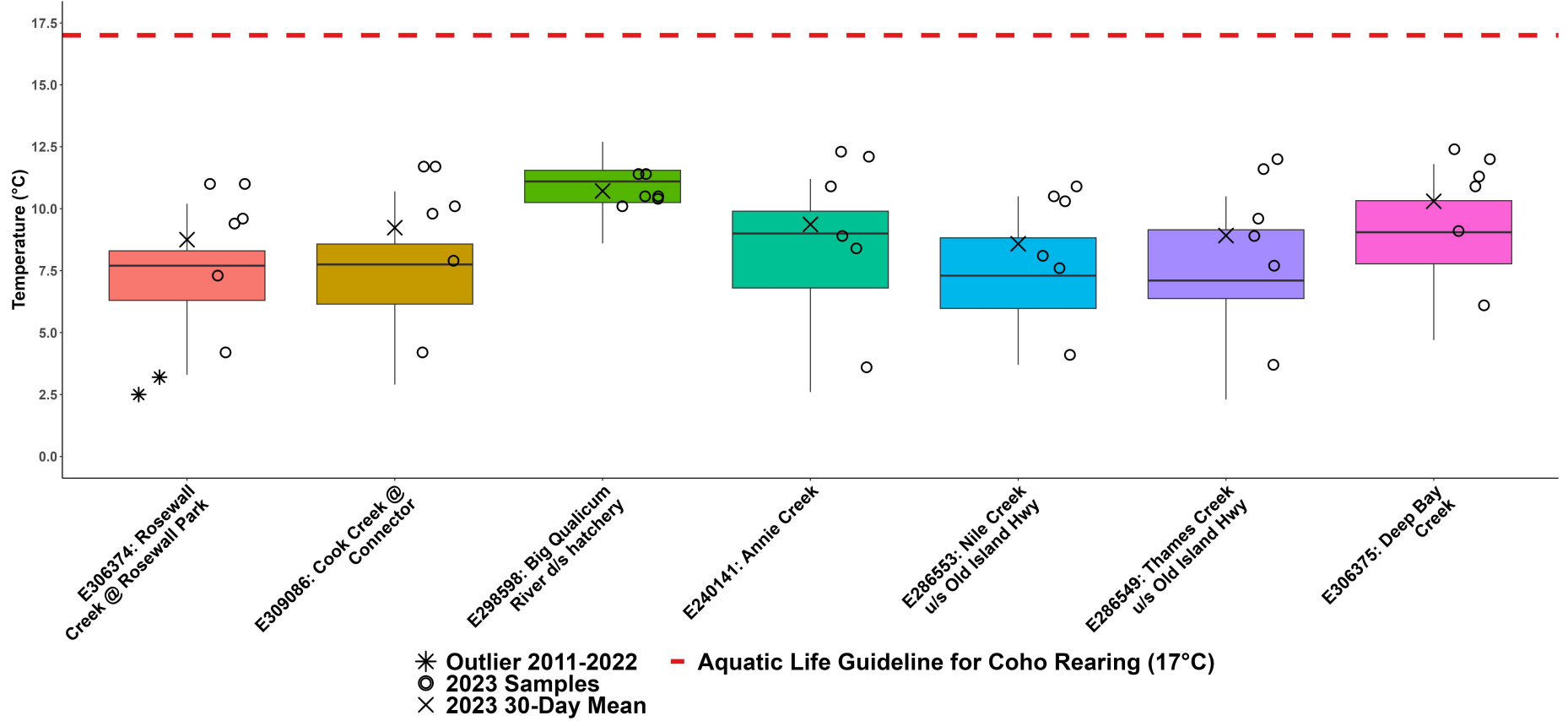


**WR1: Big Qualicum Summer Temperature**

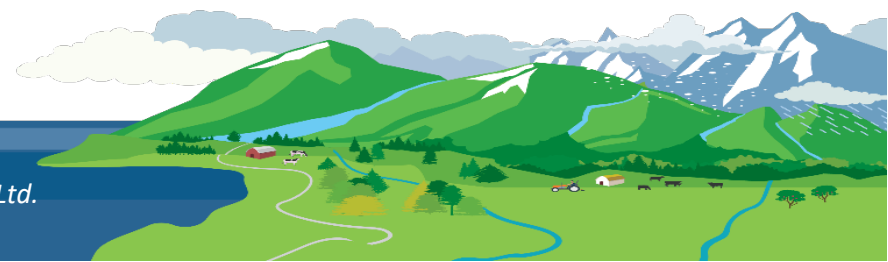
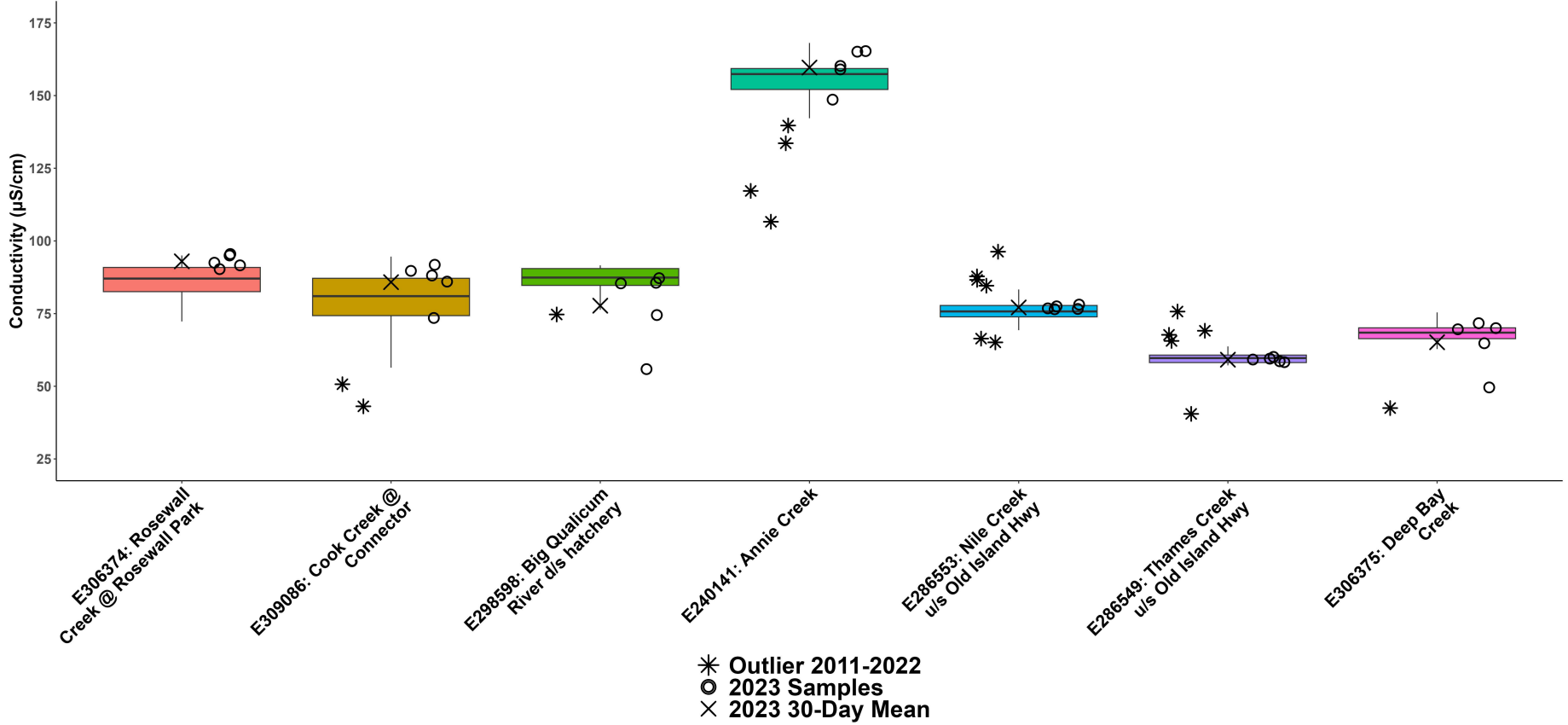




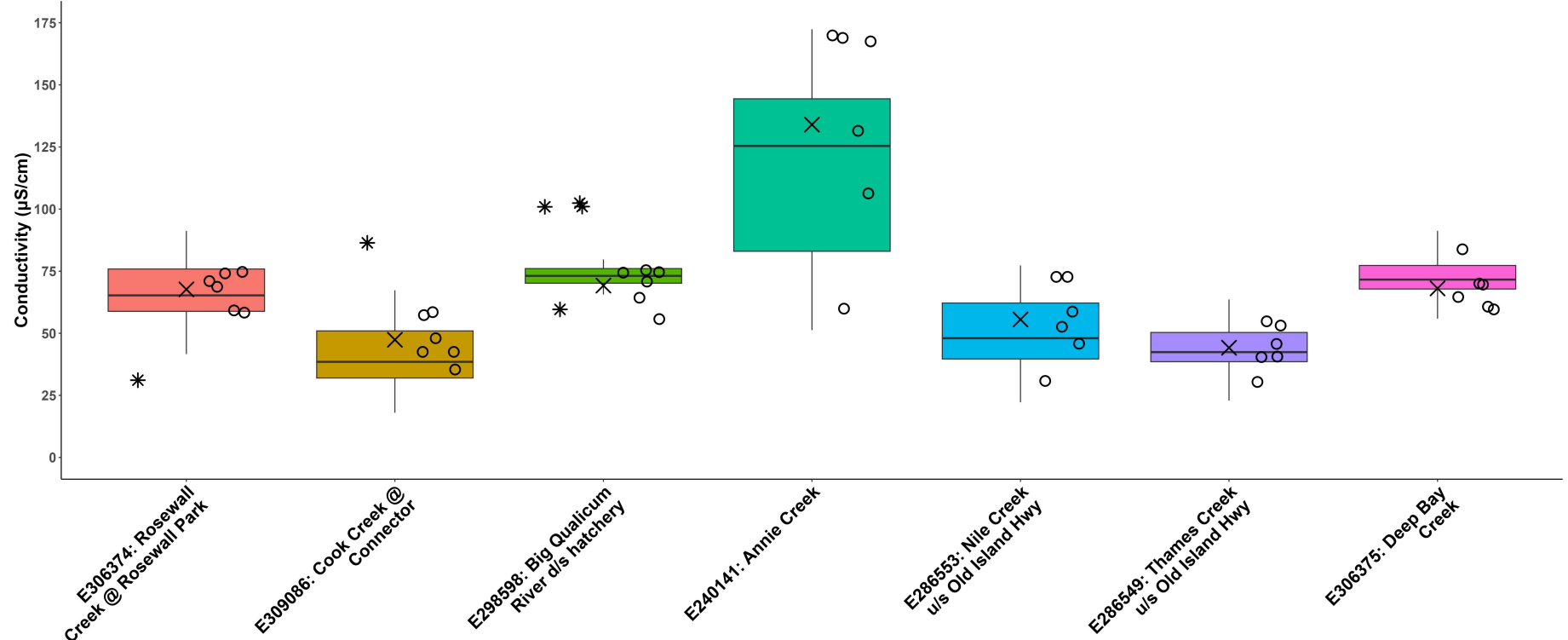
**WR1: Big Qualicum Fall Temperature**



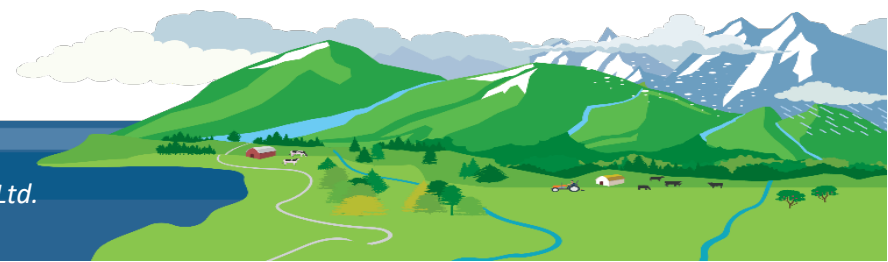
### WR1: Big Qualicum Summer Conductivity

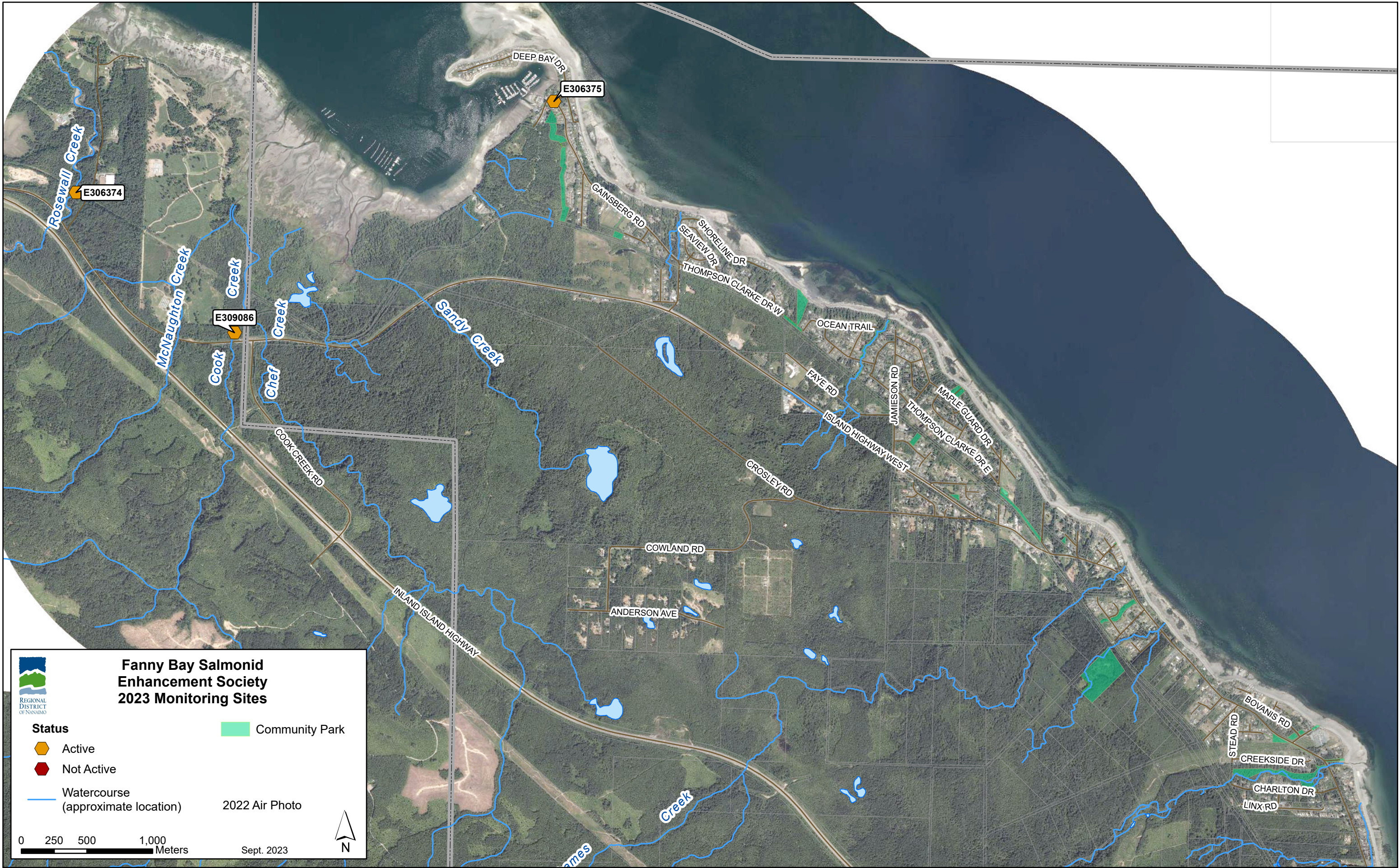


**WR1: Big Qualicum Fall Conductivity**



\* Outlier 2011-2022  
 ○ 2023 Samples  
 × 2023 30-Day Mean





**Fanny Bay Salmonid Enhancement Society  
2023 Monitoring Sites**

**Status**

- ⬡ Active
- ⬡ Not Active

— Watercourse (approximate location)

■ Community Park

2022 Air Photo

0 250 500 1,000 Meters

Sept. 2023

N



**Nile Creek Enhancement Society  
2023 Monitoring Sites**

REGIONAL DISTRICT OF NANAIMO

<b>Status</b>	Community Park
Active	Community Park
Not Active	
Watercourse (approximate location)	2022 Air Photo

0 250 500 1,000 Meters

Sept. 2023

N