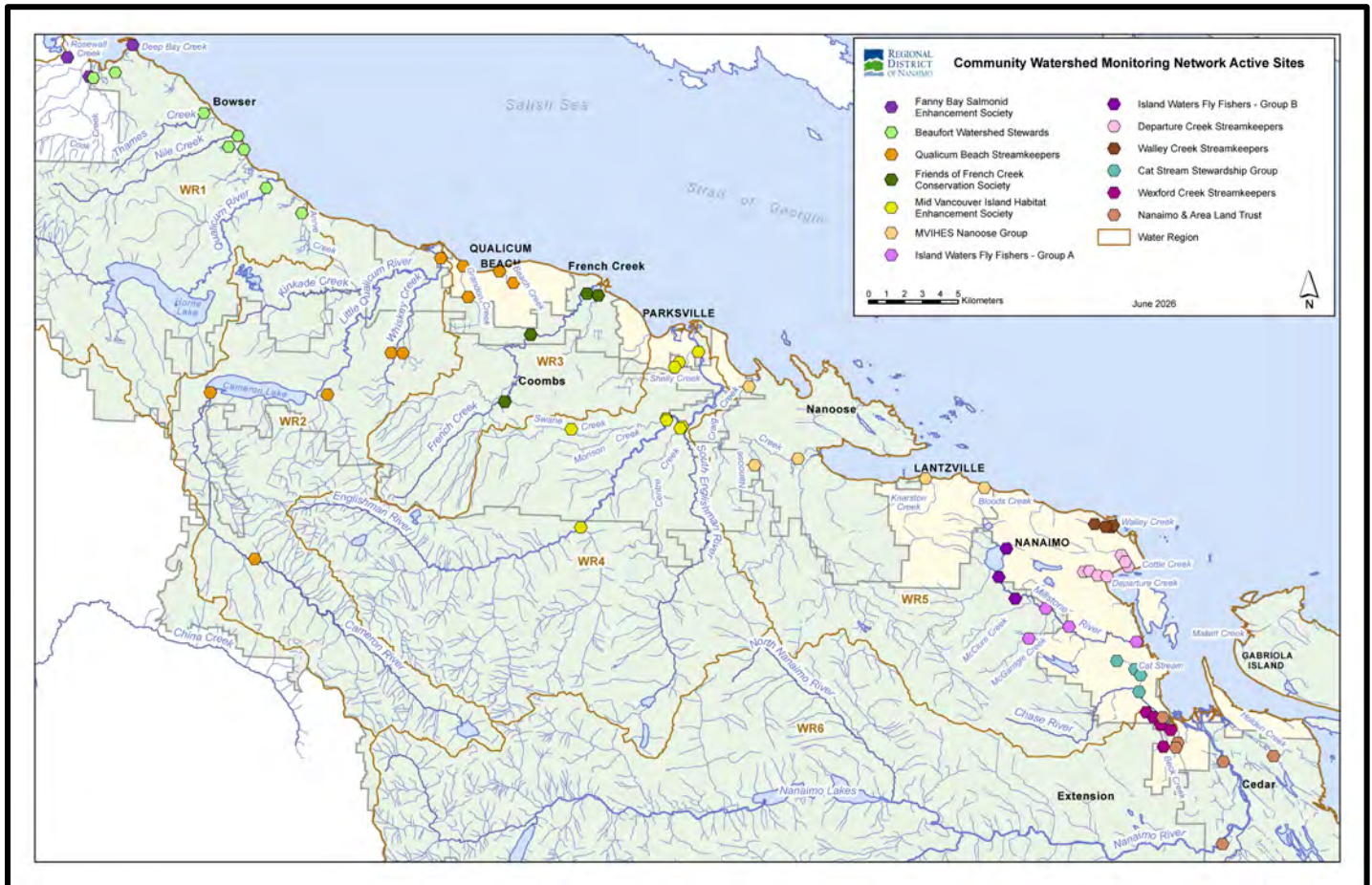


# Community Watershed Monitoring Network 2025 Results by Water Region



Included in Water Region (WR) 6 package:

1. CWMN WR6 sample sites
2. How to interpret a box plot
3. Box Plot Comparison – 2025 data to previous years: *displayed by parameter (Turbidity, Dissolved Oxygen, Temperature, Conductivity) & sample period (summer, fall)*
4. BC Conservation Foundation (BCCF) map
5. Nanaimo and Area Land Trust (NALT) map



Water Region 6  
sampled by:  
**BC Conservation Foundation (BCCF)**  
&  
**Nanaimo and Area Land Trust (NALT)**

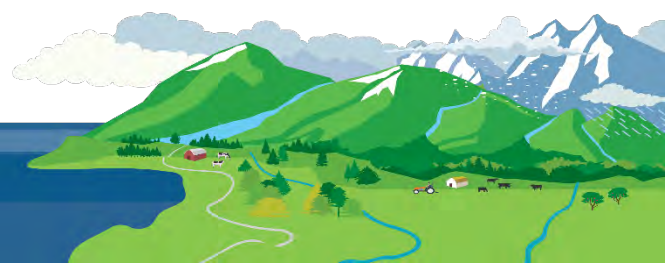


## WR6 CWMN Sample Sites:

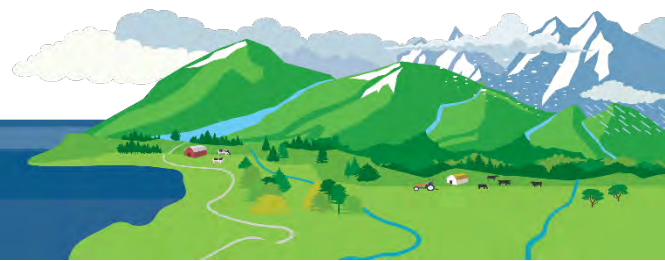
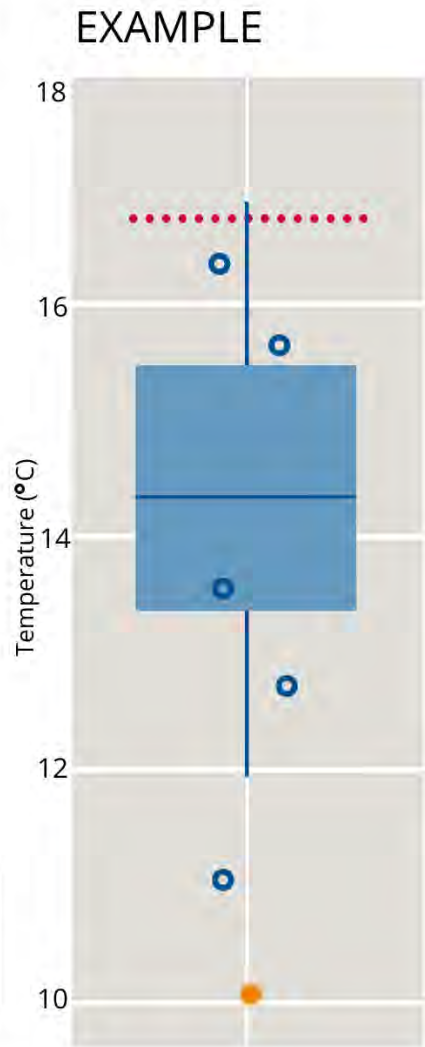
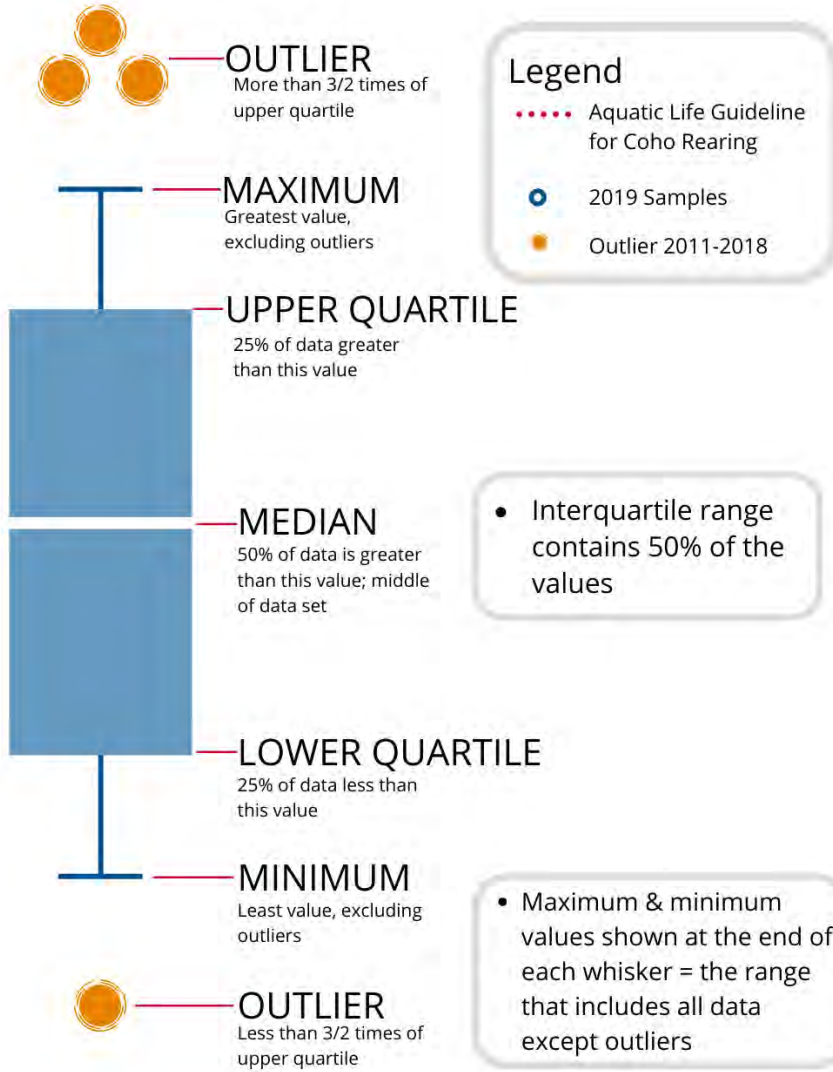
The table below shows the sites monitored by each of the streamkeeper organizations, as well as the number of years and which years a site was sampled. The number of years is important to keep in mind when interpreting the box plots as the plot for each site may contain a slightly different temporal range.

Group	EMS ID	Geographic Description	Total Years Sampled	Years Sampled
BCCF	E318155	Wexford Ck at Community Park (Glenford Pl)	7	2019 - present
BCCF	E318152	North Wexford Ck just d/s Douglas Ave	7	2019 - present
BCCF	E318172	North Wexford Ck just u/s seniors complex	7	2019 - present
BCCF	E318153	North Wexford Ck just d/s Tenth St	7	2019 - present
BCCF	E318154	Wexford Ck ~20m d/s confluence of N and main arm	7	2019 - present
NALT	E287699	Nanaimo River u/s Haslam Ck ~500m d/s hwy bridge	15	2011 - present
NALT	E215789	Nanaimo River at Cedar Rd bridge	12	2014 - present
NALT	E321395	Richards Creek 5m u/s Frames Rd	6	2020 - present
NALT	E290487	Beck Creek @ Cedar Rd	14	2012 - present
NALT	E310147	Holden Creek off East side of Lazo Lane	8.5	2017 - present*

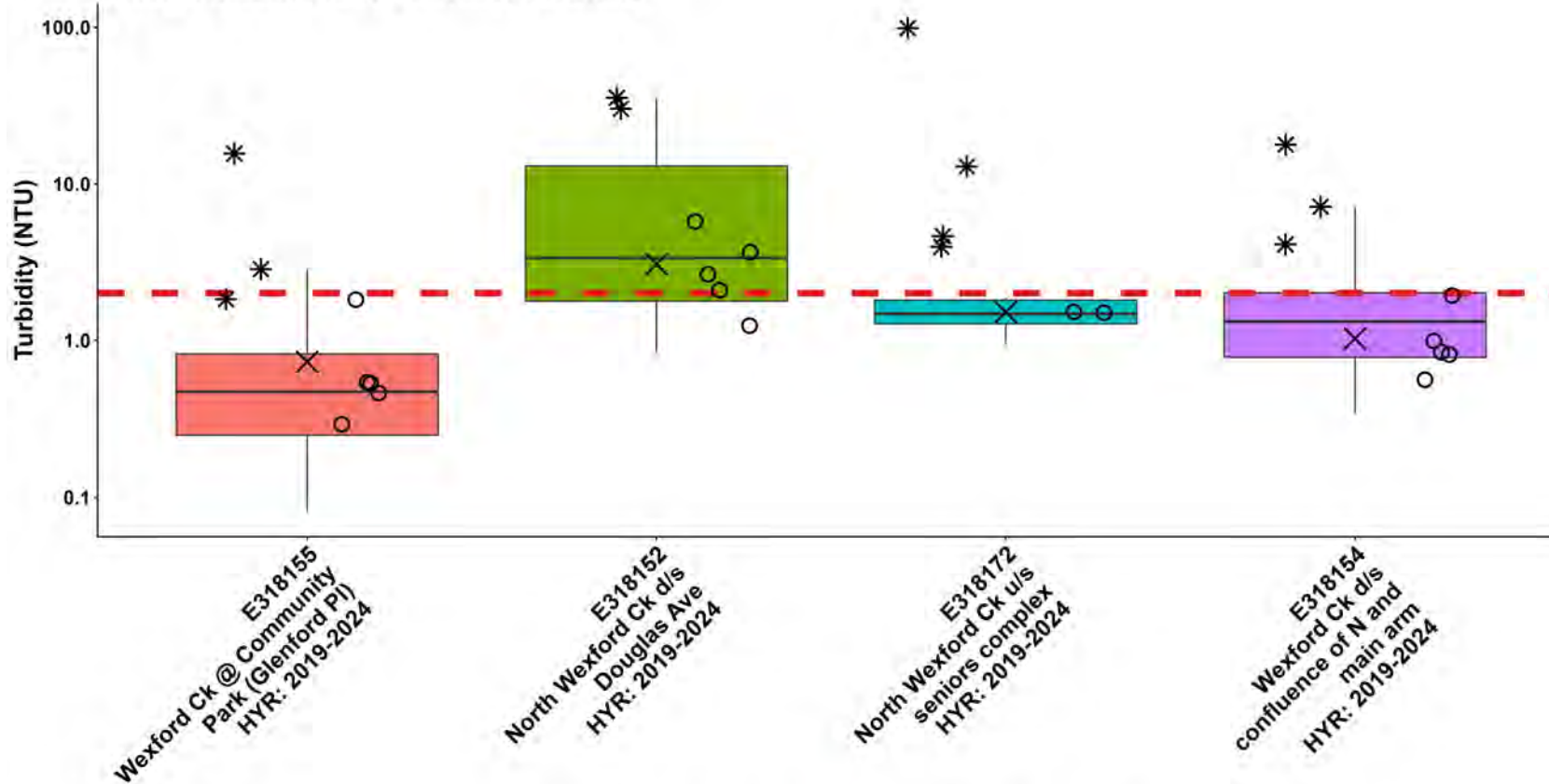
*WR 1 notes for number of years sampled: \*Summer 2017 not sampled*



# How to Interpret a Box Plot:



### WR6a: Nanaimo River Summer Turbidity

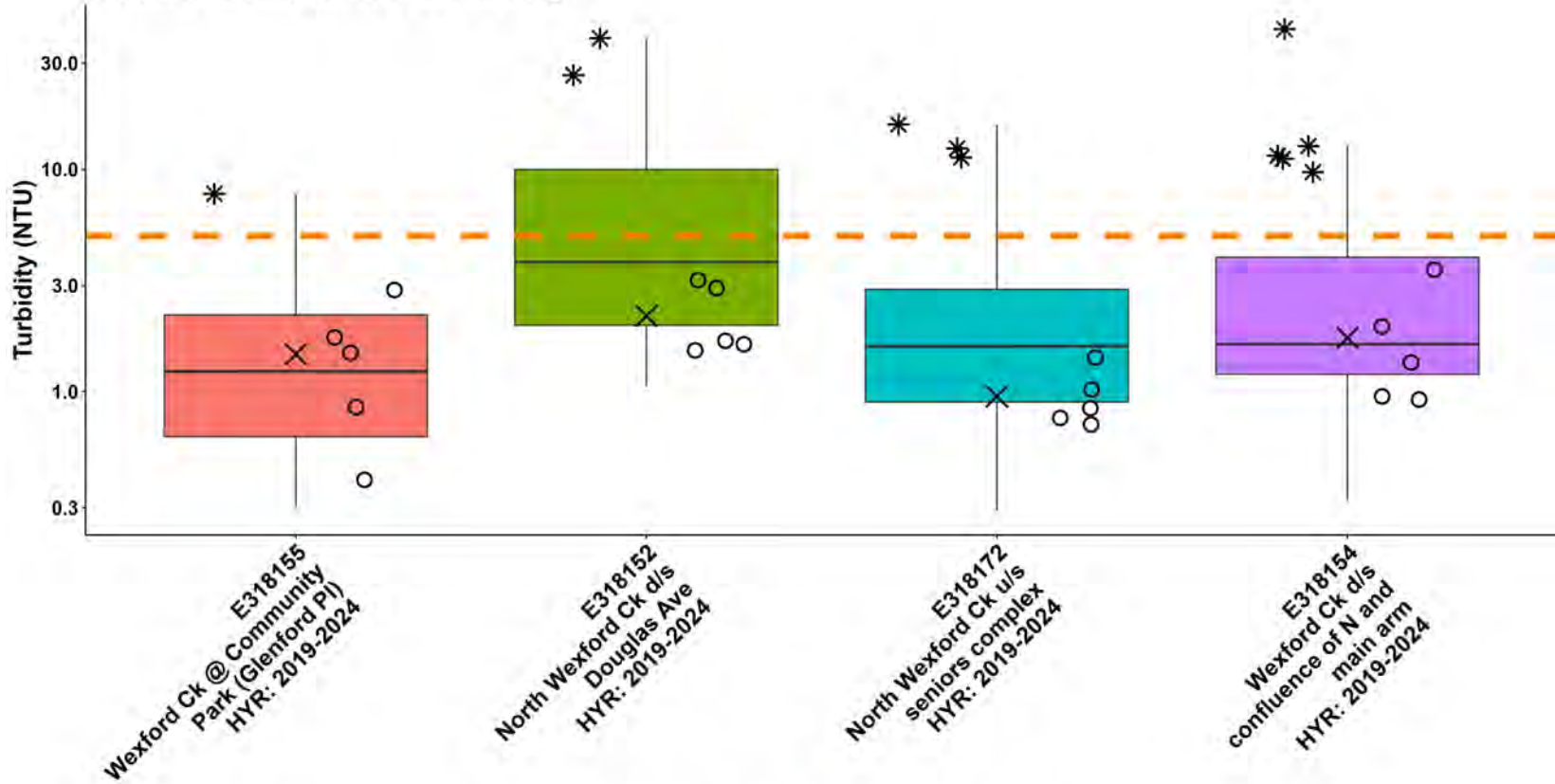


\* Historical Outlier    — Jan-Sept Max (2 NTU)  
 ○ 2025 Samples  
 X 2025 30-Day Mean

Note:  
 HYR: indicates the year range for which historical data were included for a sample location.

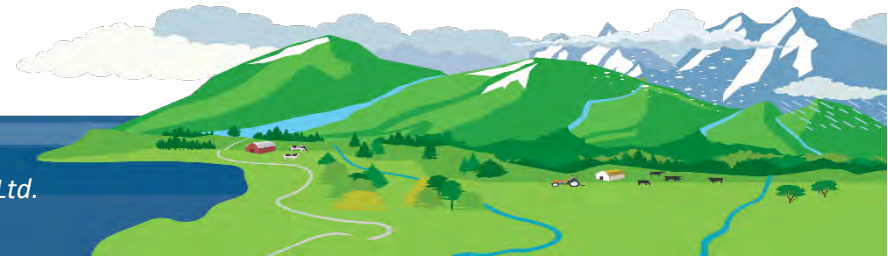


### WR6a: Nanaimo River Fall Turbidity

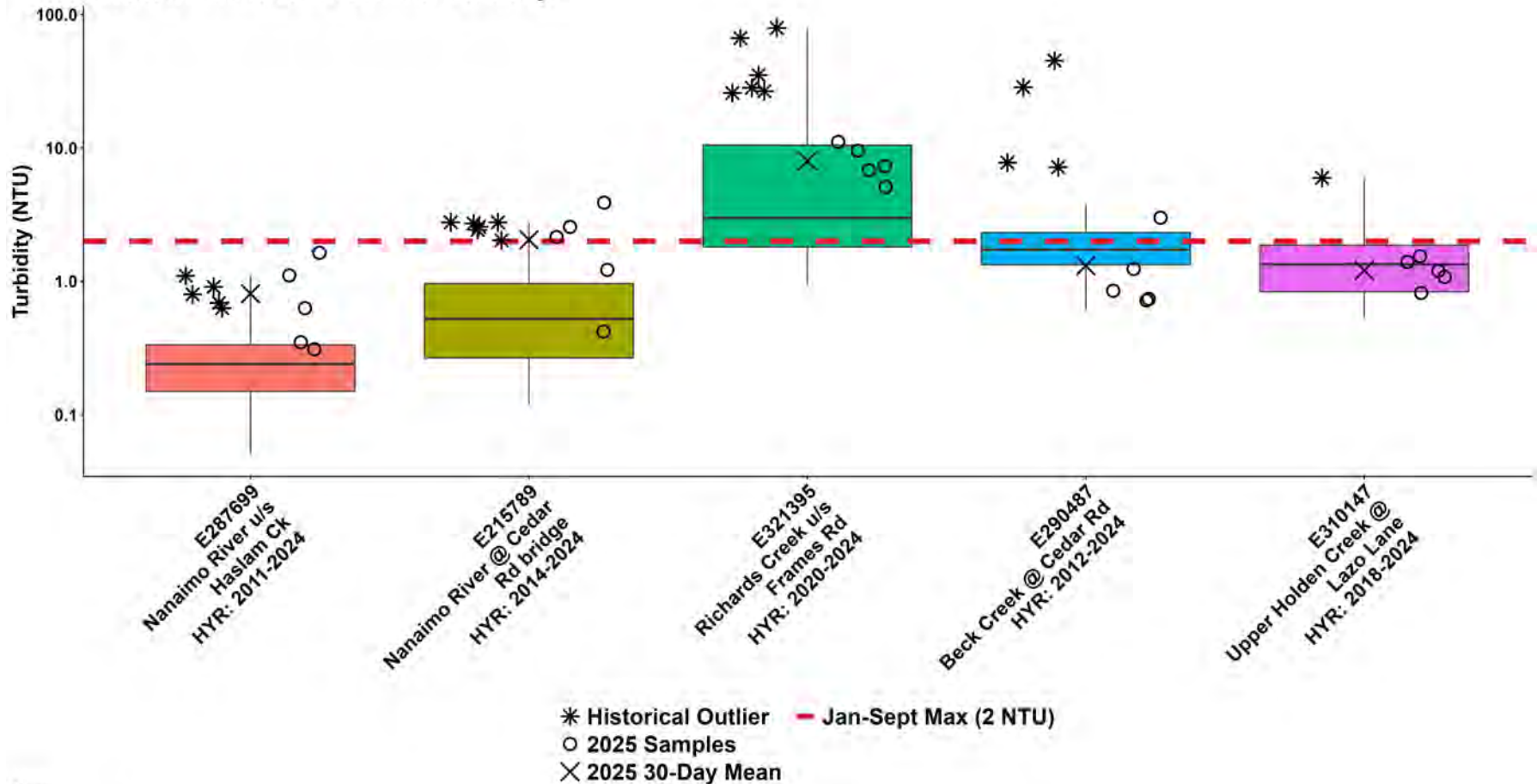


\* Historical Outlier    — Oct-Dec Max (5 NTU)  
 ○ 2025 Samples  
 X 2025 30-Day Mean

Note:  
 HYR: indicates the year range for which historical data were included for a sample location.



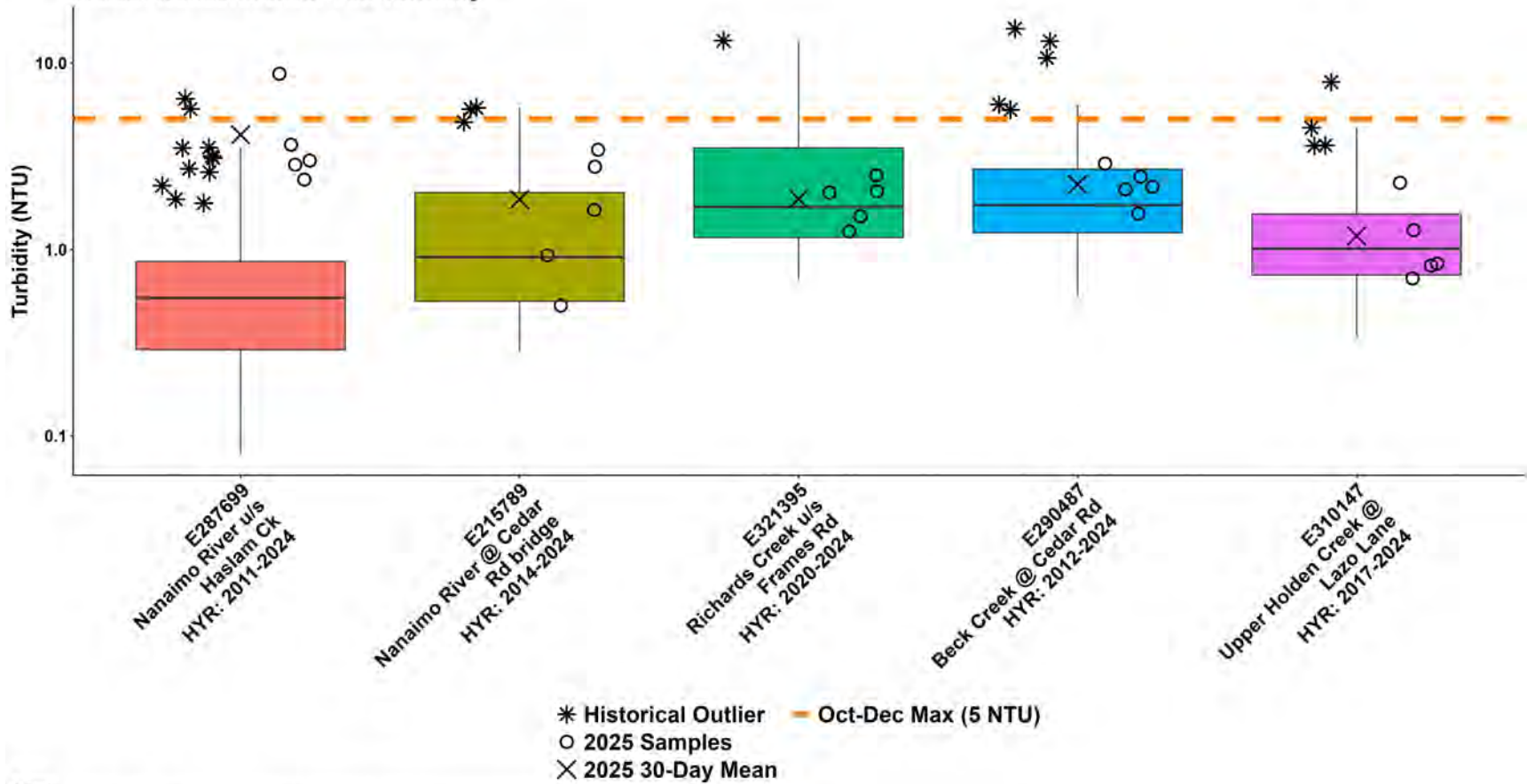
### WR6b: Nanaimo River Summer Turbidity



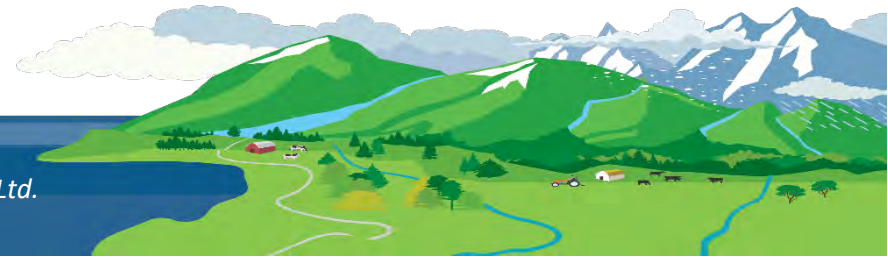
Note:  
HYR: indicates the year range for which historical data were included for a sample location.



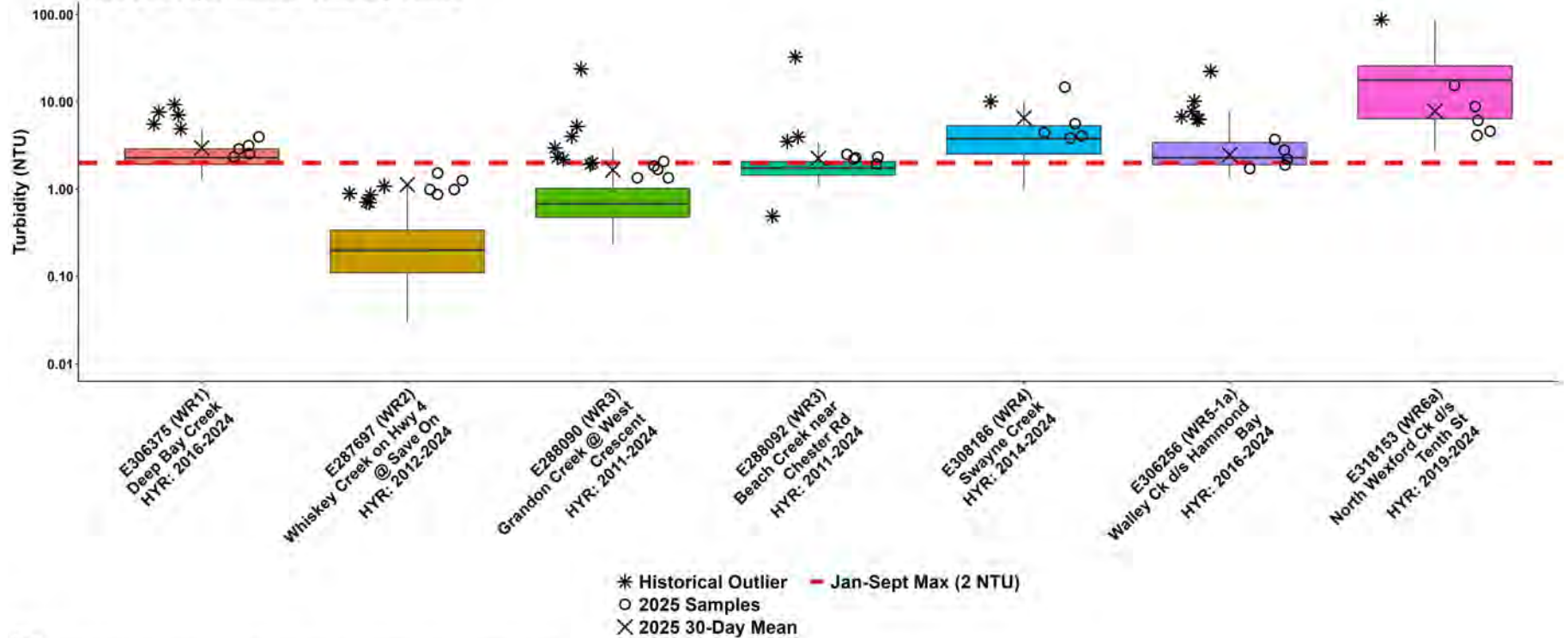
### WR6b: Nanaimo River Fall Turbidity



Note:  
 HYR: indicates the year range for which historical data were included for a sample location.

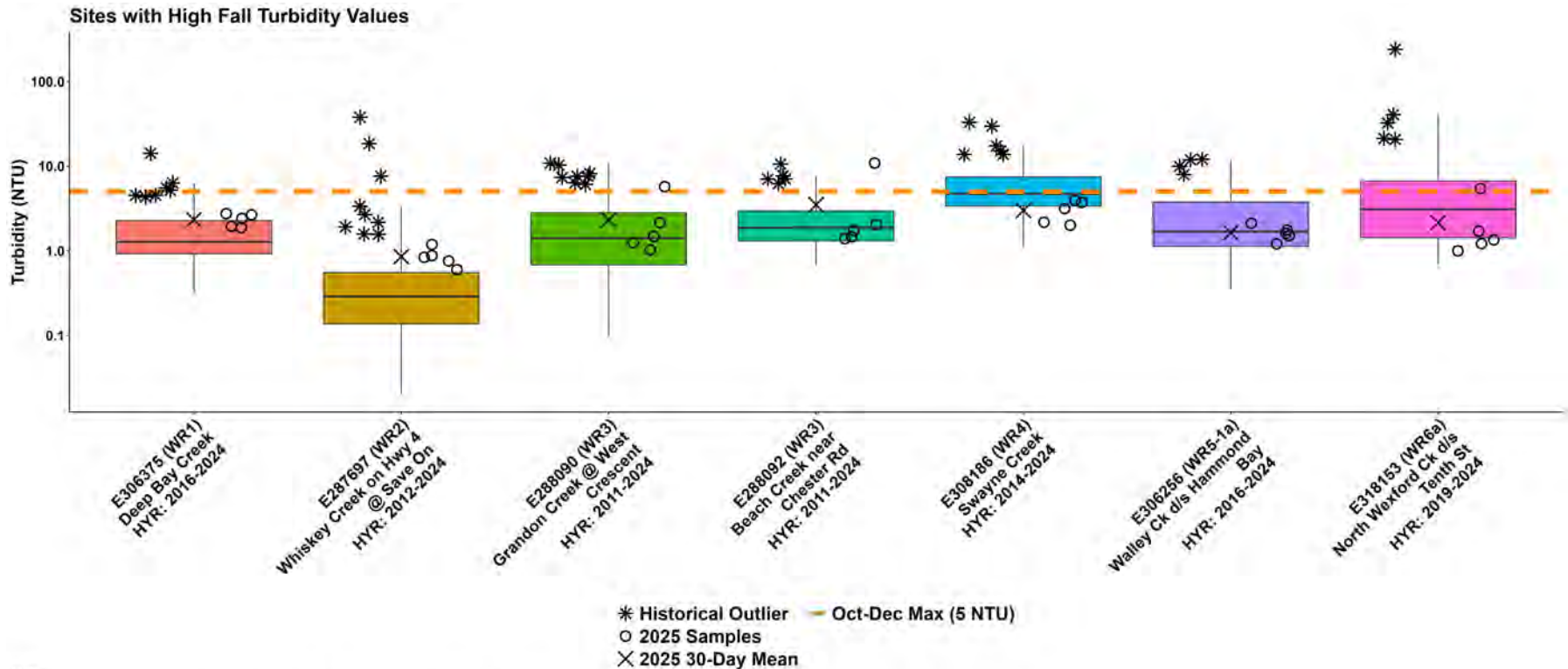


### Sites with High Summer Turbidity Values

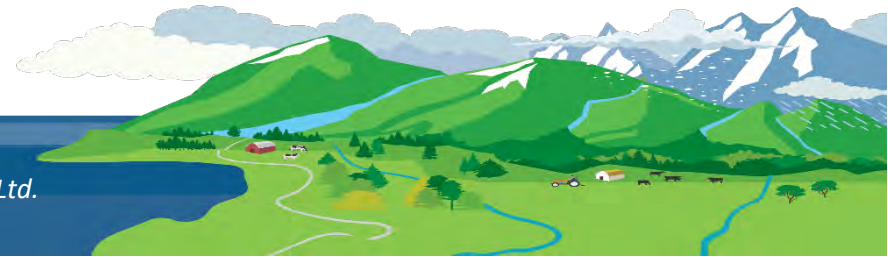


Note:  
HYR: indicates the year range for which historical data were included for a sample location

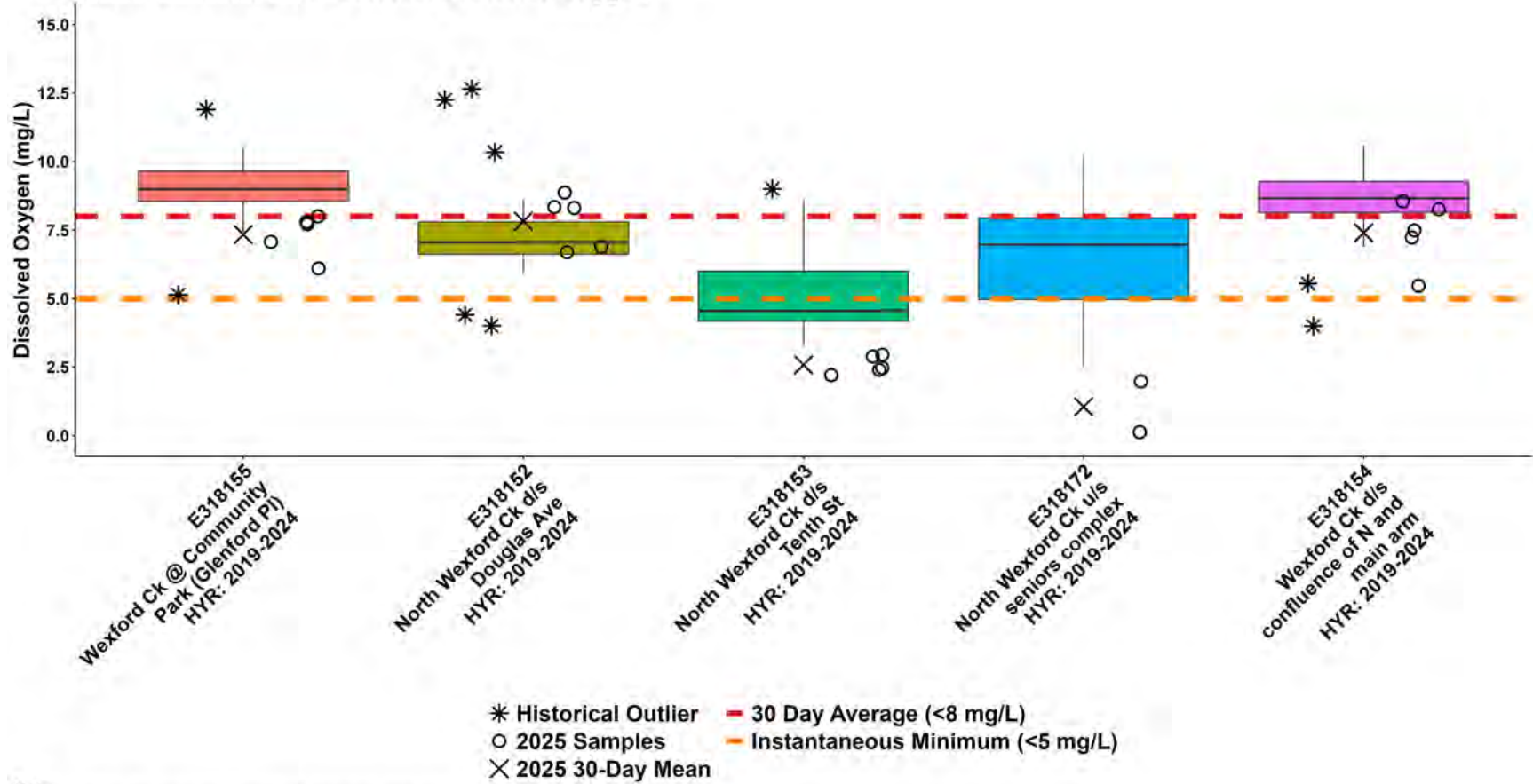




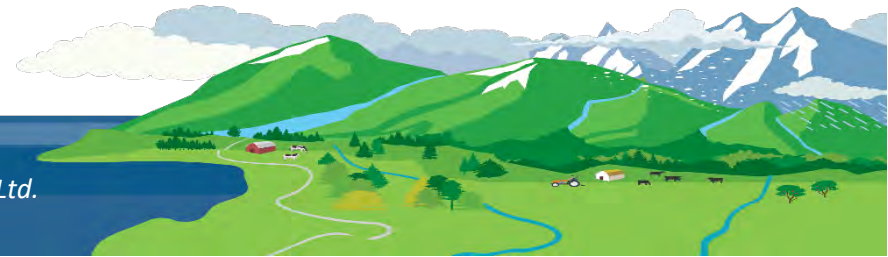
Note:  
HYR: indicates the year range for which historical data were included for a sample location.



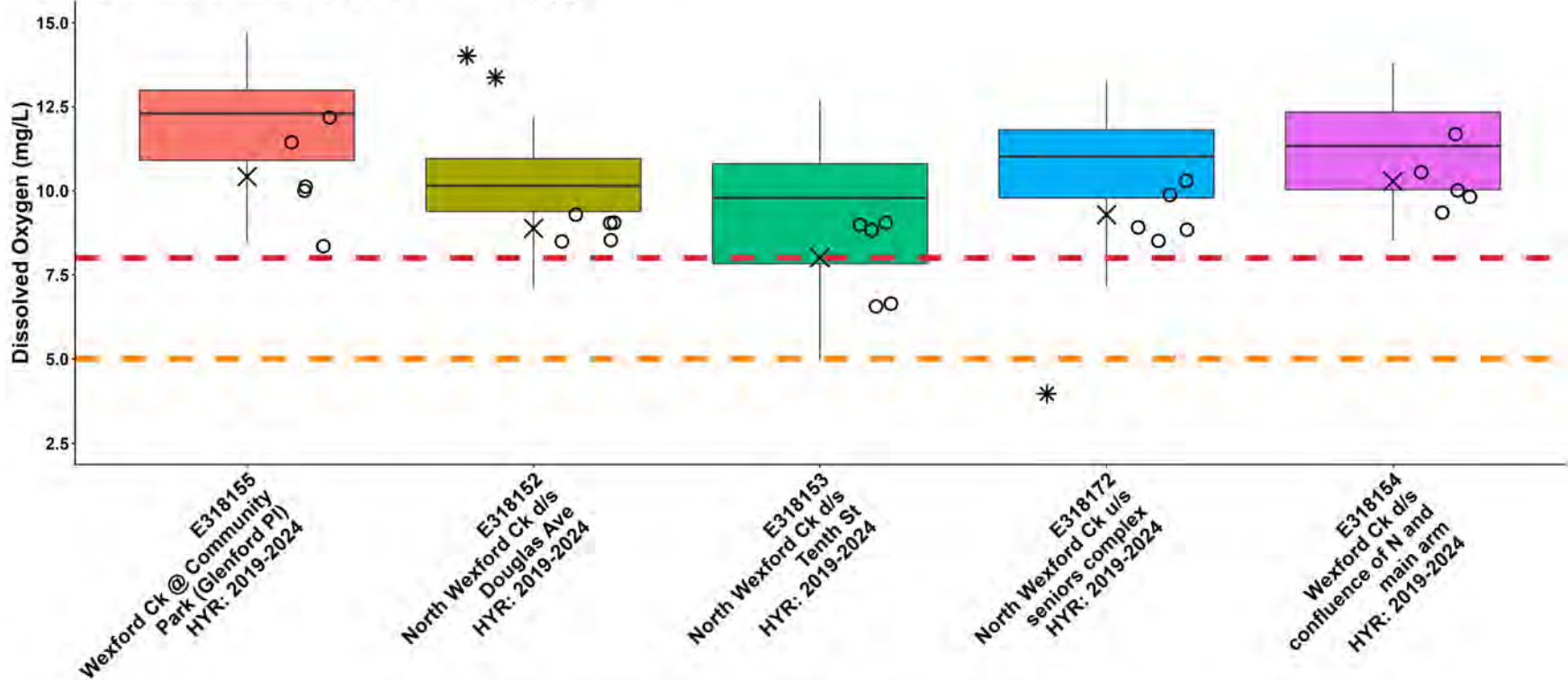
### WR6a: Nanaimo River Summer Dissolved Oxygen



Note:  
HYR: indicates the year range for which historical data were included for a sample location.

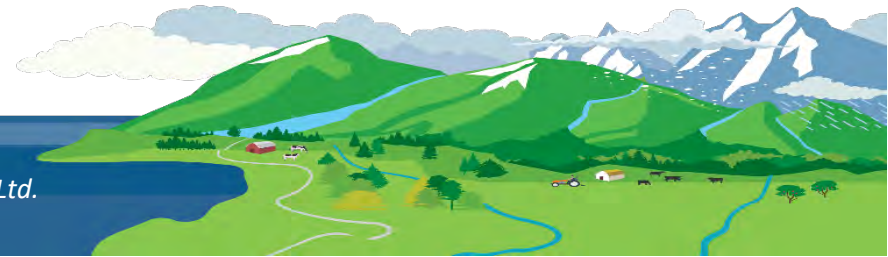


### WR6a: Nanaimo River Fall Dissolved Oxygen

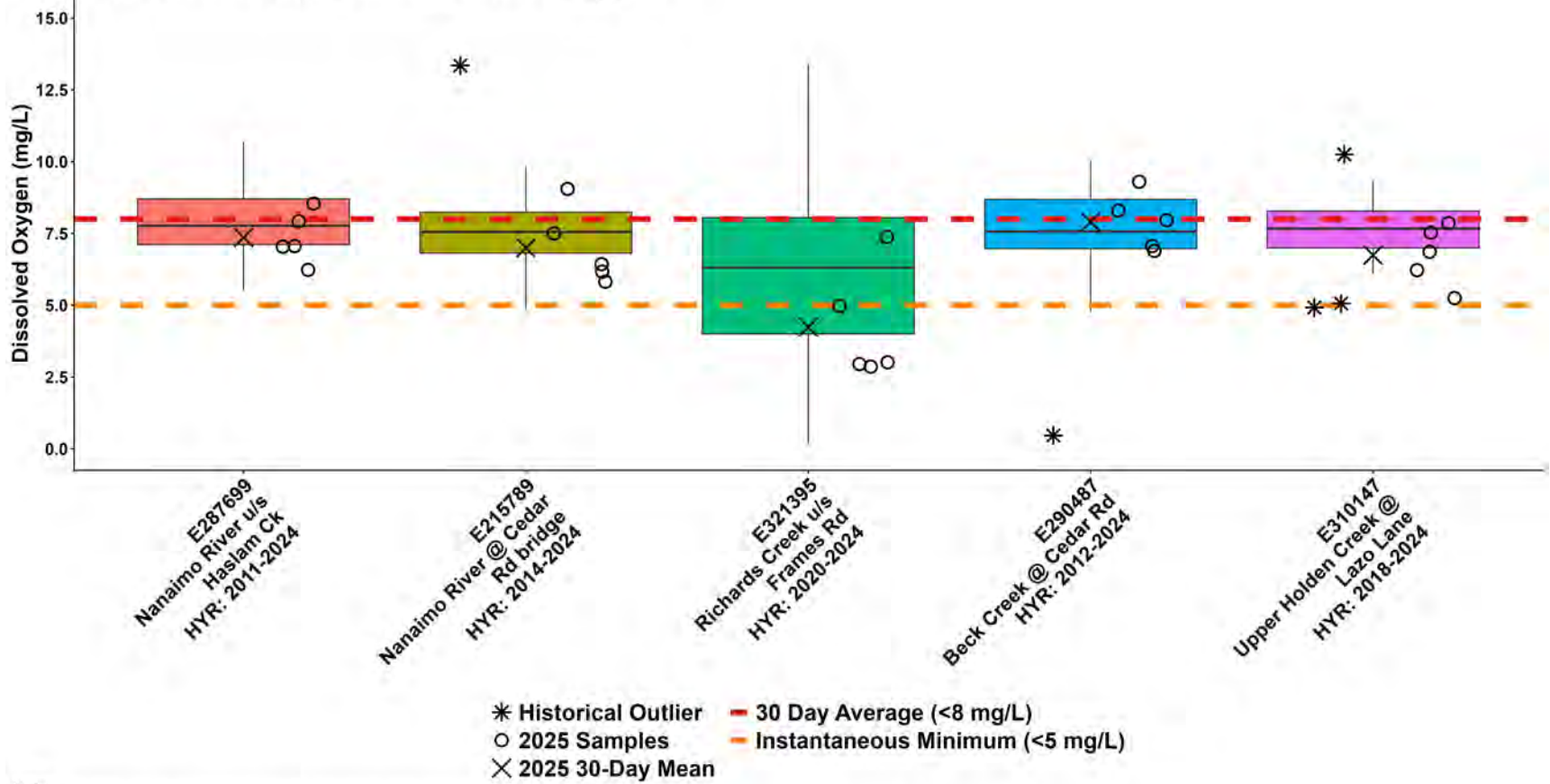


\* Historical Outlier    - 30 Day Average (<8 mg/L)  
 ○ 2025 Samples        - Instantaneous Minimum (<5 mg/L)  
 × 2025 30-Day Mean

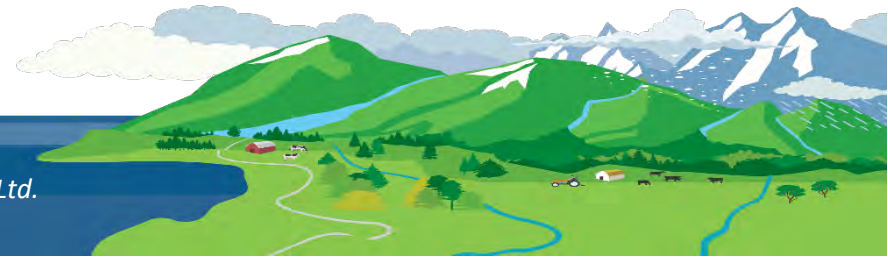
Note:  
HYR: indicates the year range for which historical data were included for a sample location.



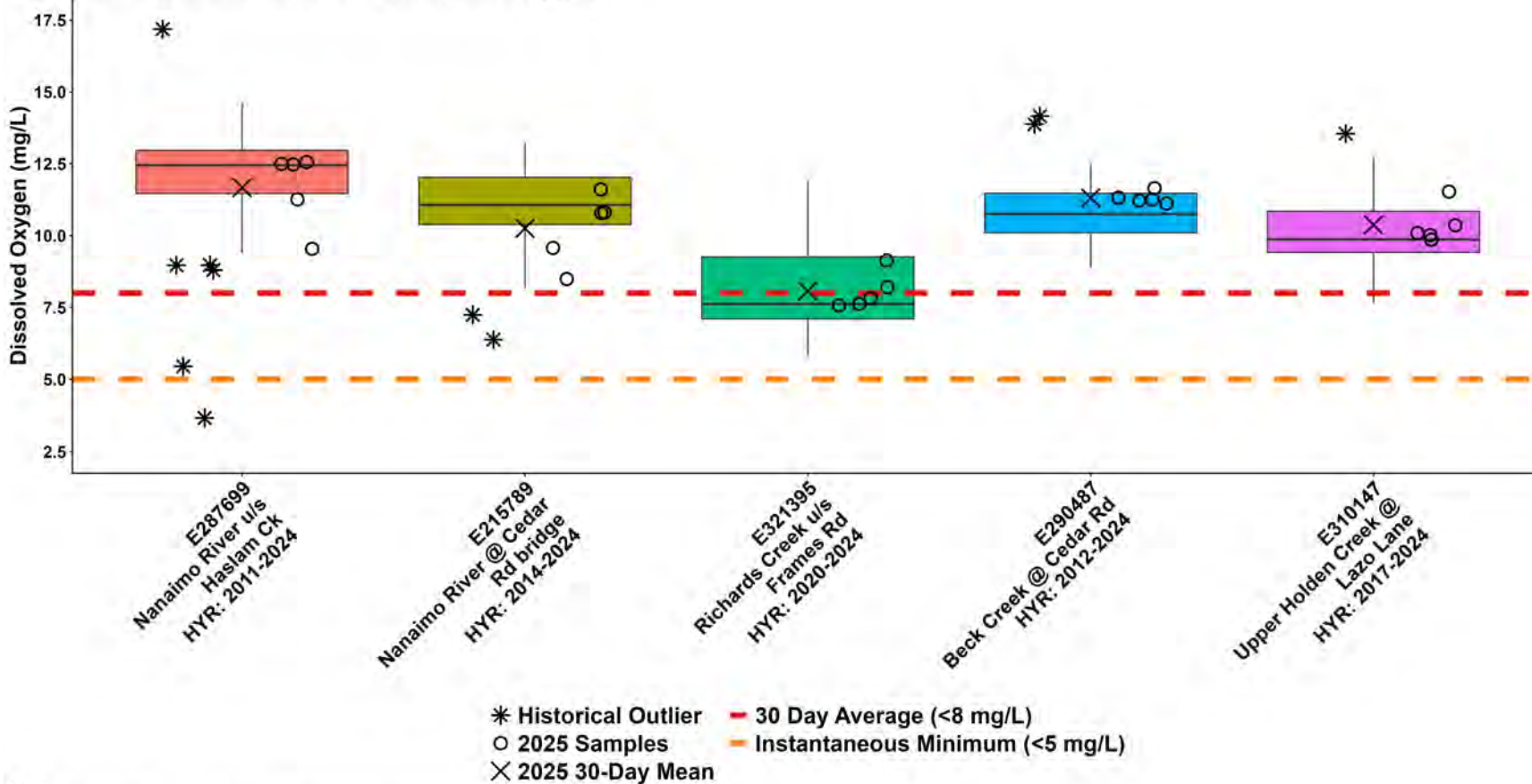
### WR6b: Nanaimo River Summer Dissolved Oxygen



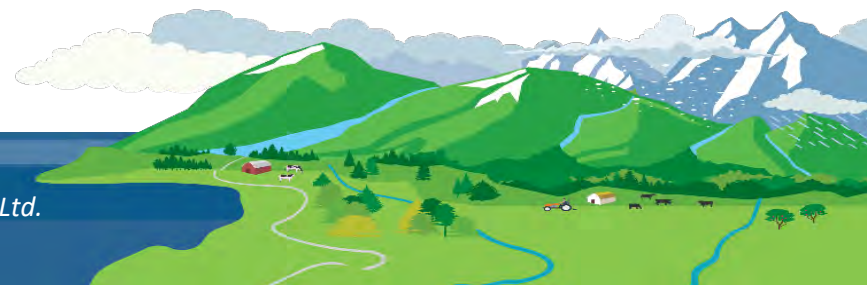
Note:  
HYR: indicates the year range for which historical data were included for a sample location.



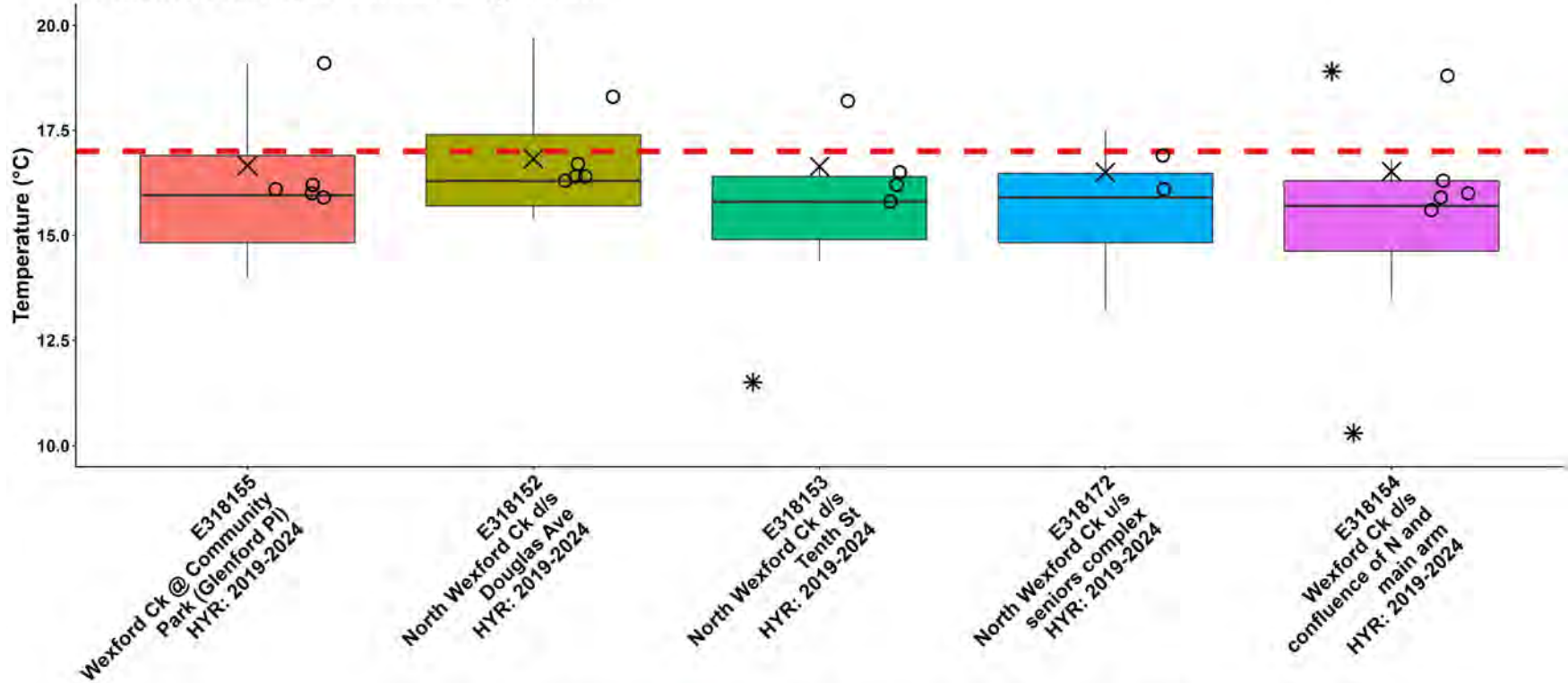
### WR6b: Nanaimo River Fall Dissolved Oxygen



Note:  
HYR: indicates the year range for which historical data were included for a sample location.

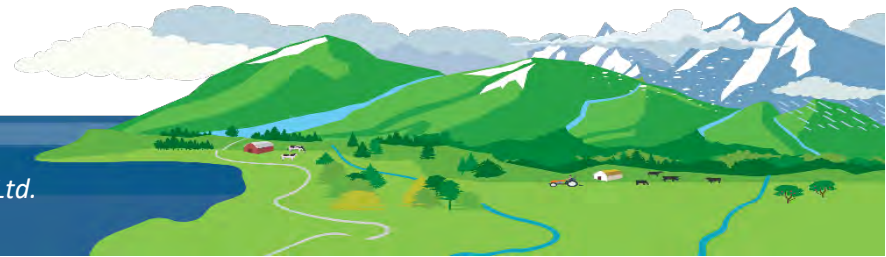


### WR6a: Nanaimo River Summer Temperature

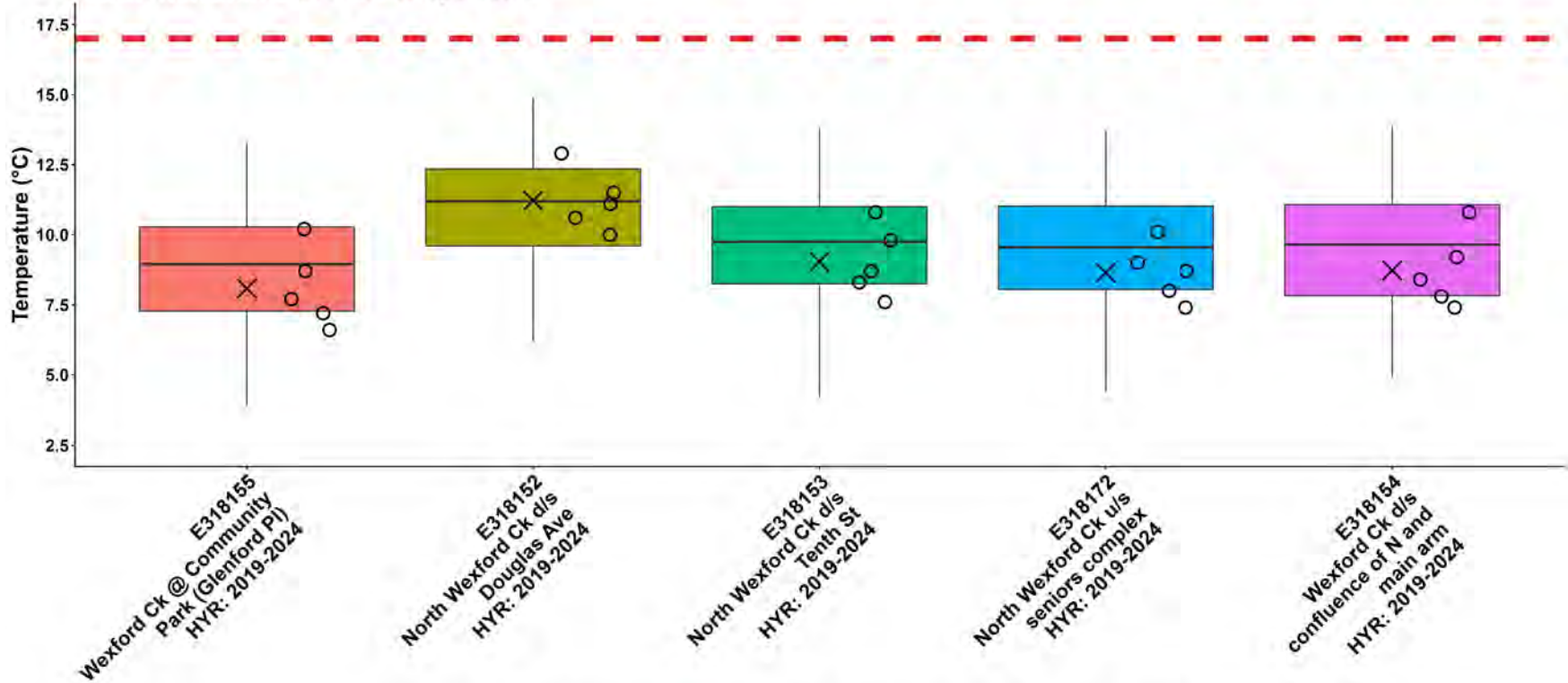


\* Historical Outlier    - Aquatic Life Guideline for Coho Rearing (17°C)  
 ○ 2025 Samples  
 × 2025 30-Day Mean

Note:  
HYR: indicates the year range for which historical data were included for a sample location.

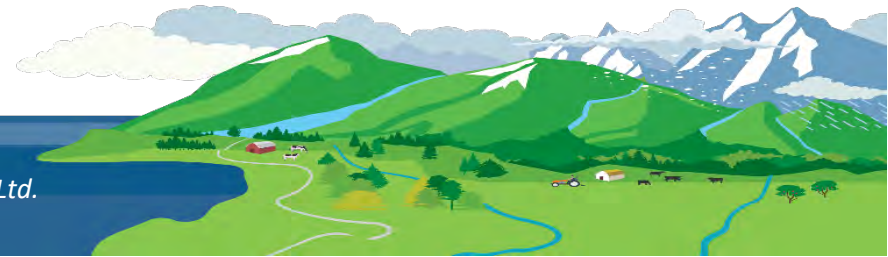


### WR6a: Nanaimo River Fall Temperature

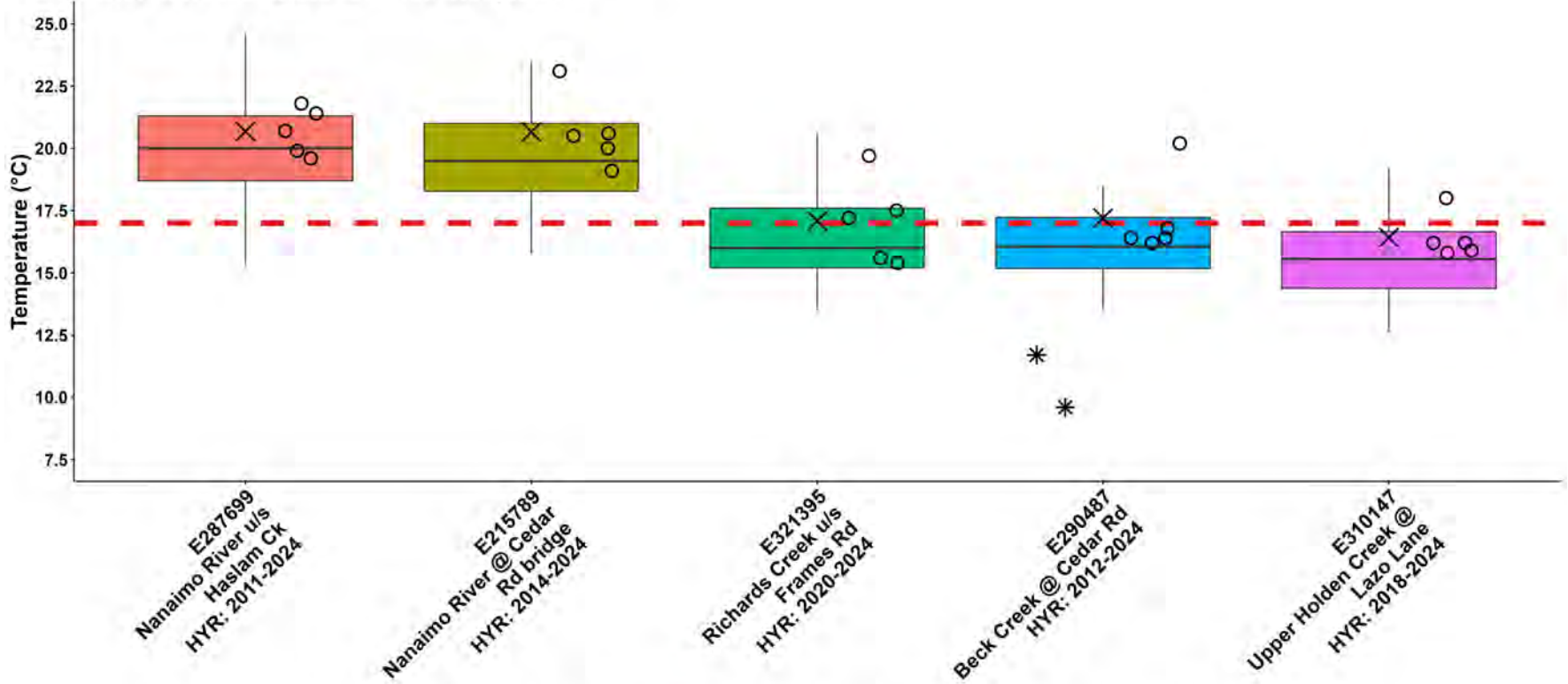


\* Historical Outlier    - Aquatic Life Guideline for Coho Rearing (17°C)  
 ○ 2025 Samples  
 X 2025 30-Day Mean

Note:  
 HYR: indicates the year range for which historical data were included for a sample location.

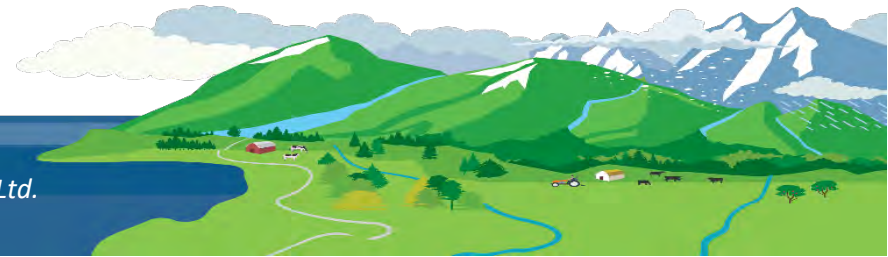


### WR6b: Nanaimo River Summer Temperature

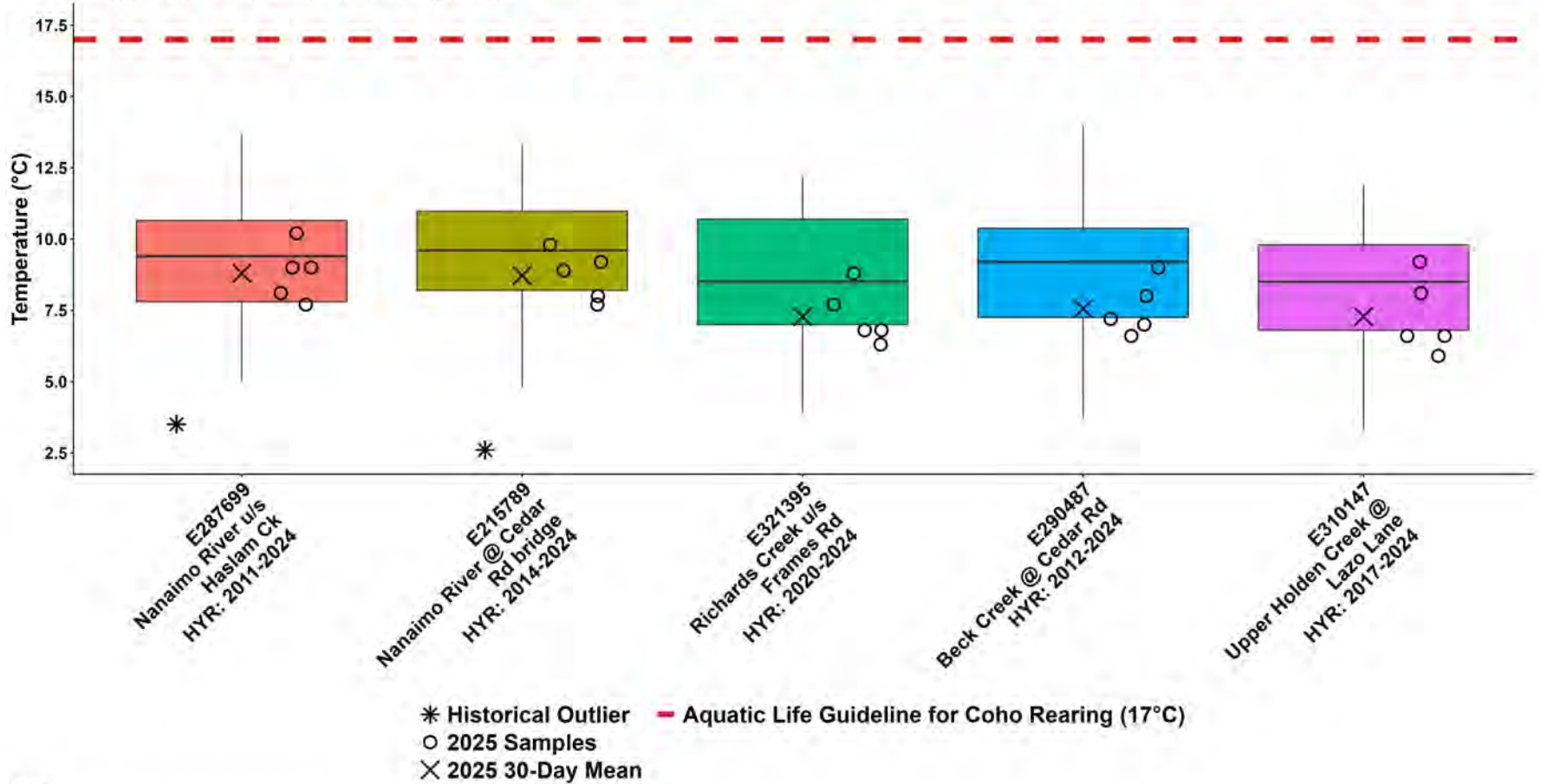


\* Historical Outlier    - Aquatic Life Guideline for Coho Rearing (17°C)  
 ○ 2025 Samples  
 × 2025 30-Day Mean

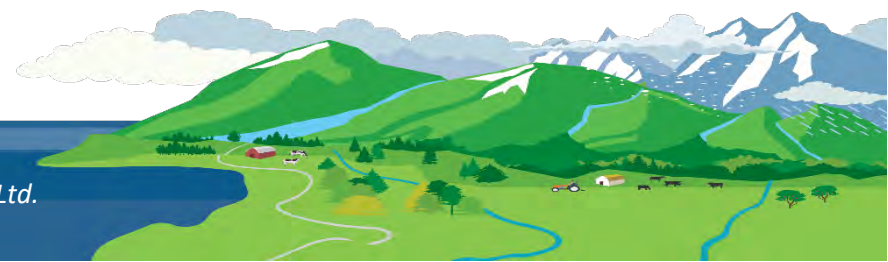
Note:  
HYR: indicates the year range for which historical data were included for a sample location.



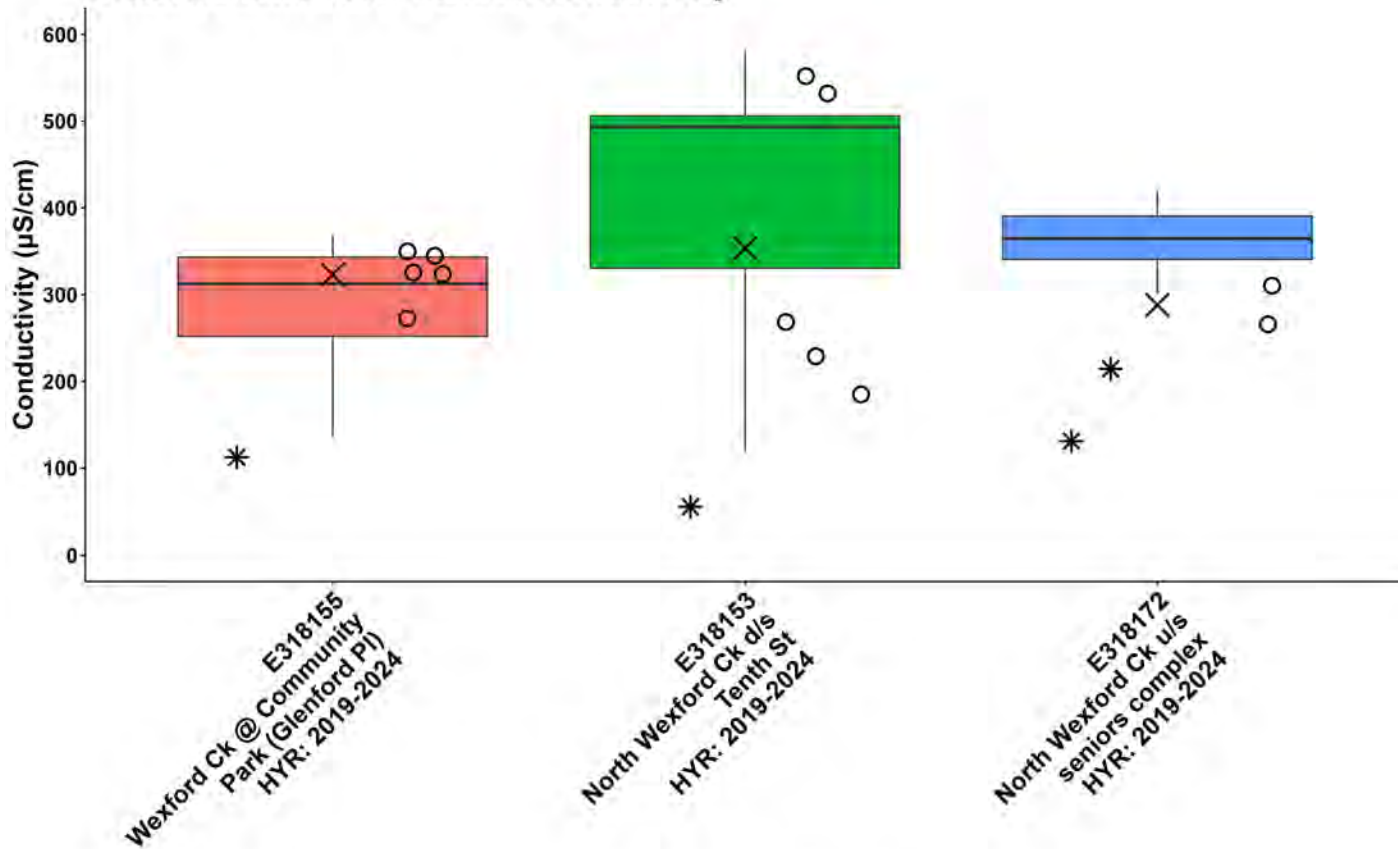
### WR6b: Nanaimo River Fall Temperature



Note:  
HYR: indicates the year range for which historical data were included for a sample location.

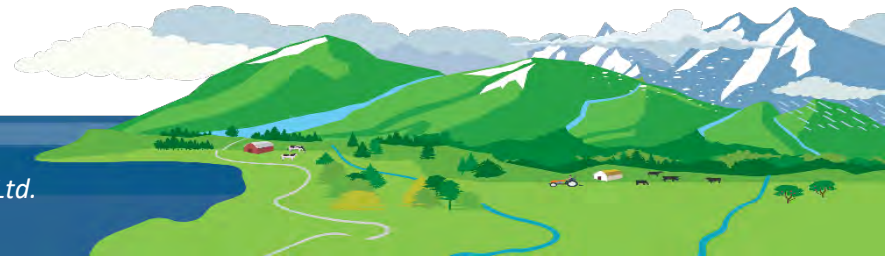


### WR6a: Nanaimo River Summer Conductivity

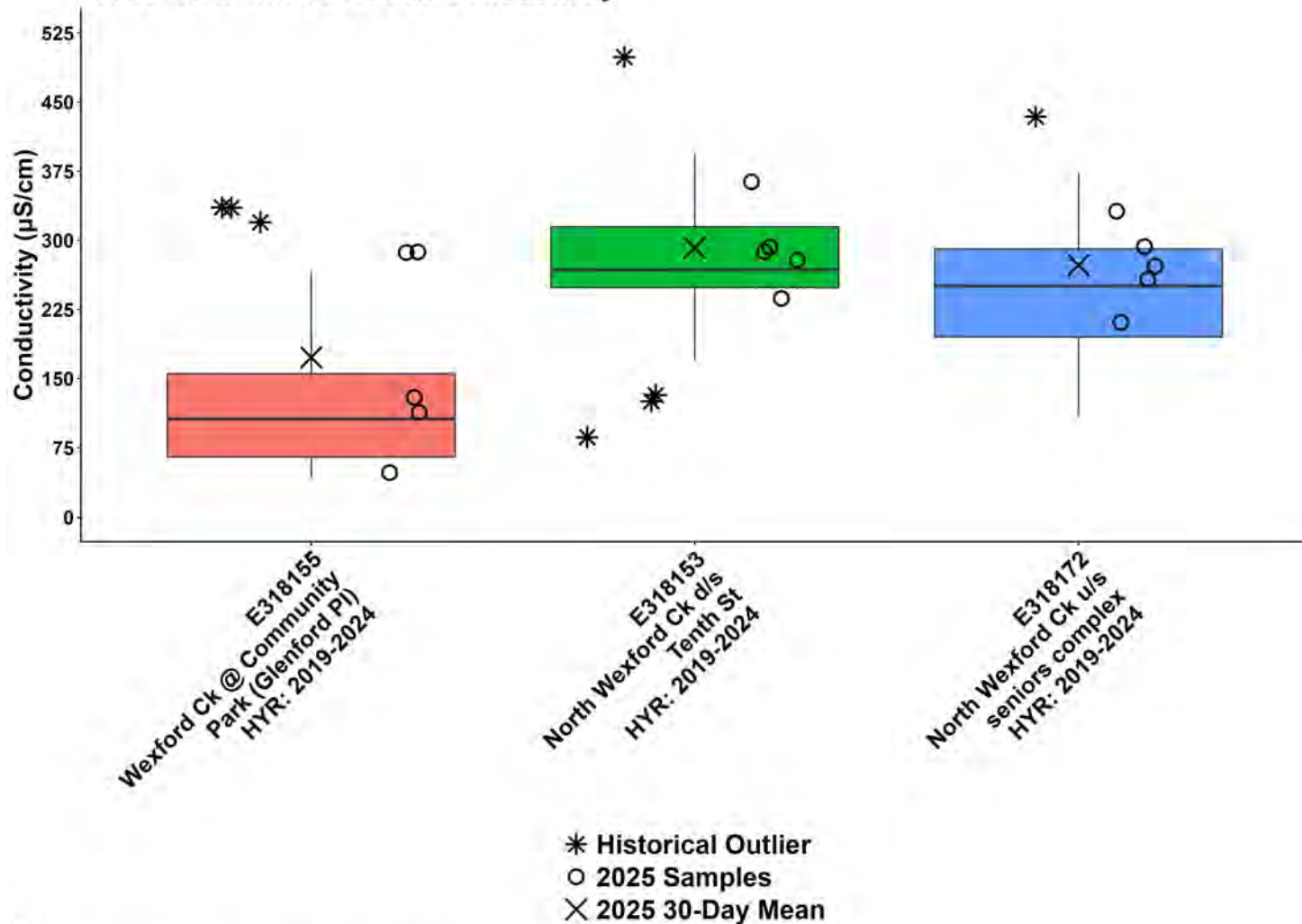


\* Historical Outlier  
 ○ 2025 Samples  
 × 2025 30-Day Mean

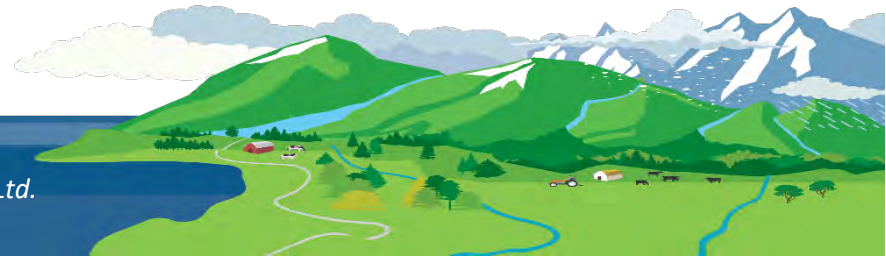
Note:  
 HYR: indicates the year range for which historical data were included for a sample location.



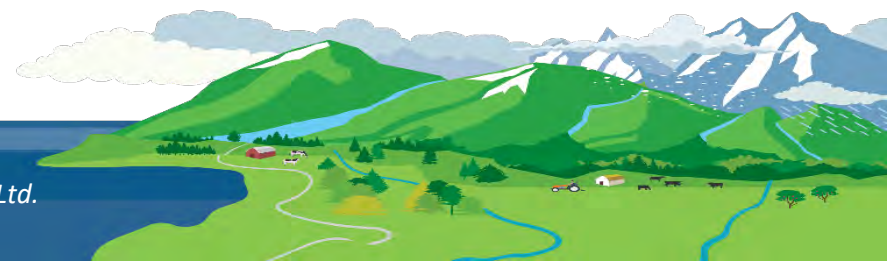
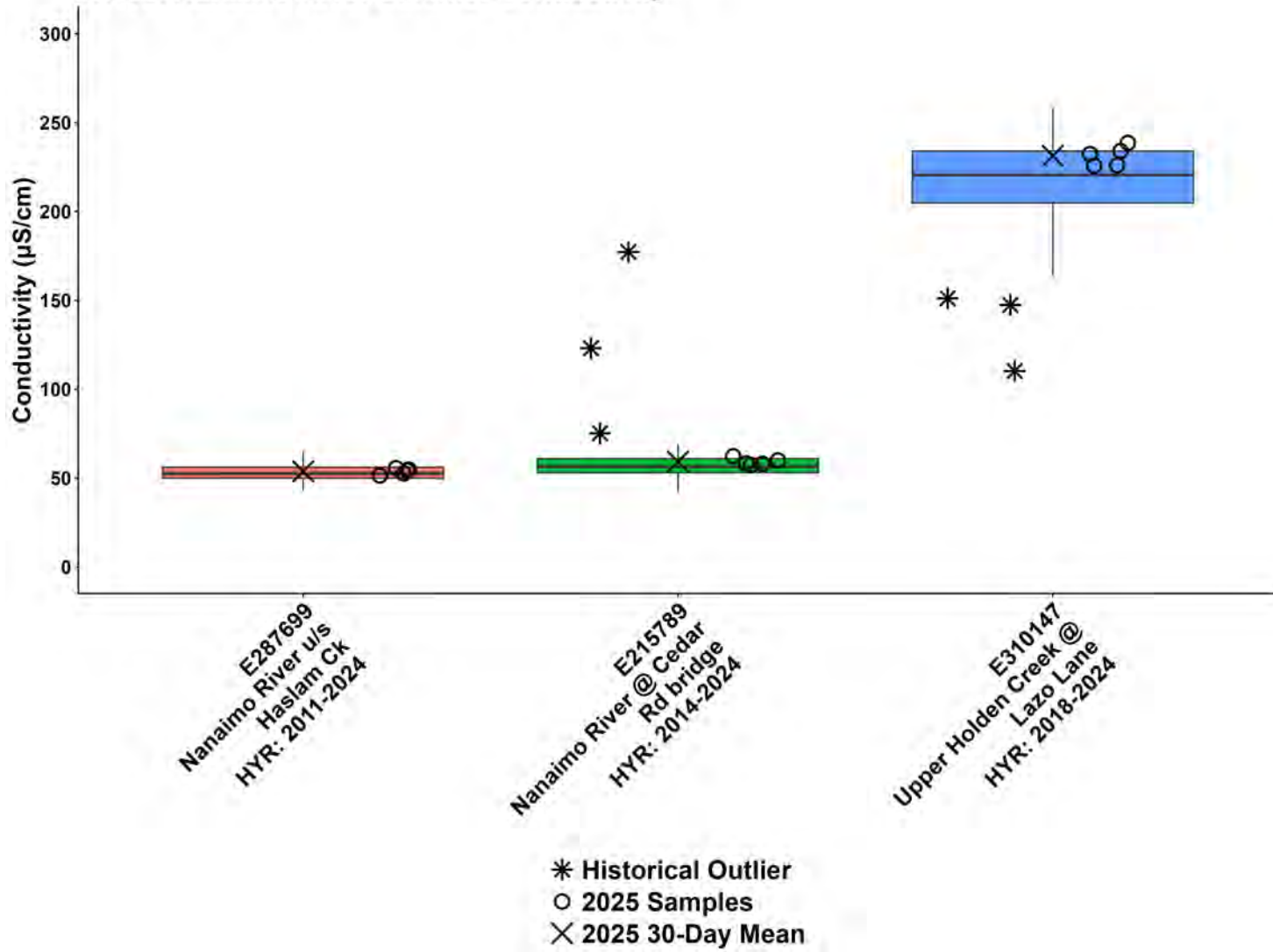
### WR6a: Nanaimo River Fall Conductivity



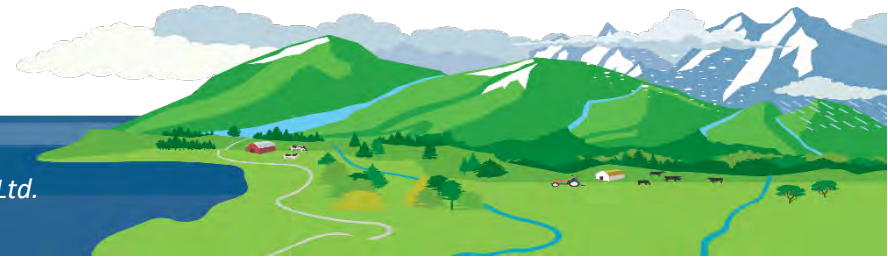
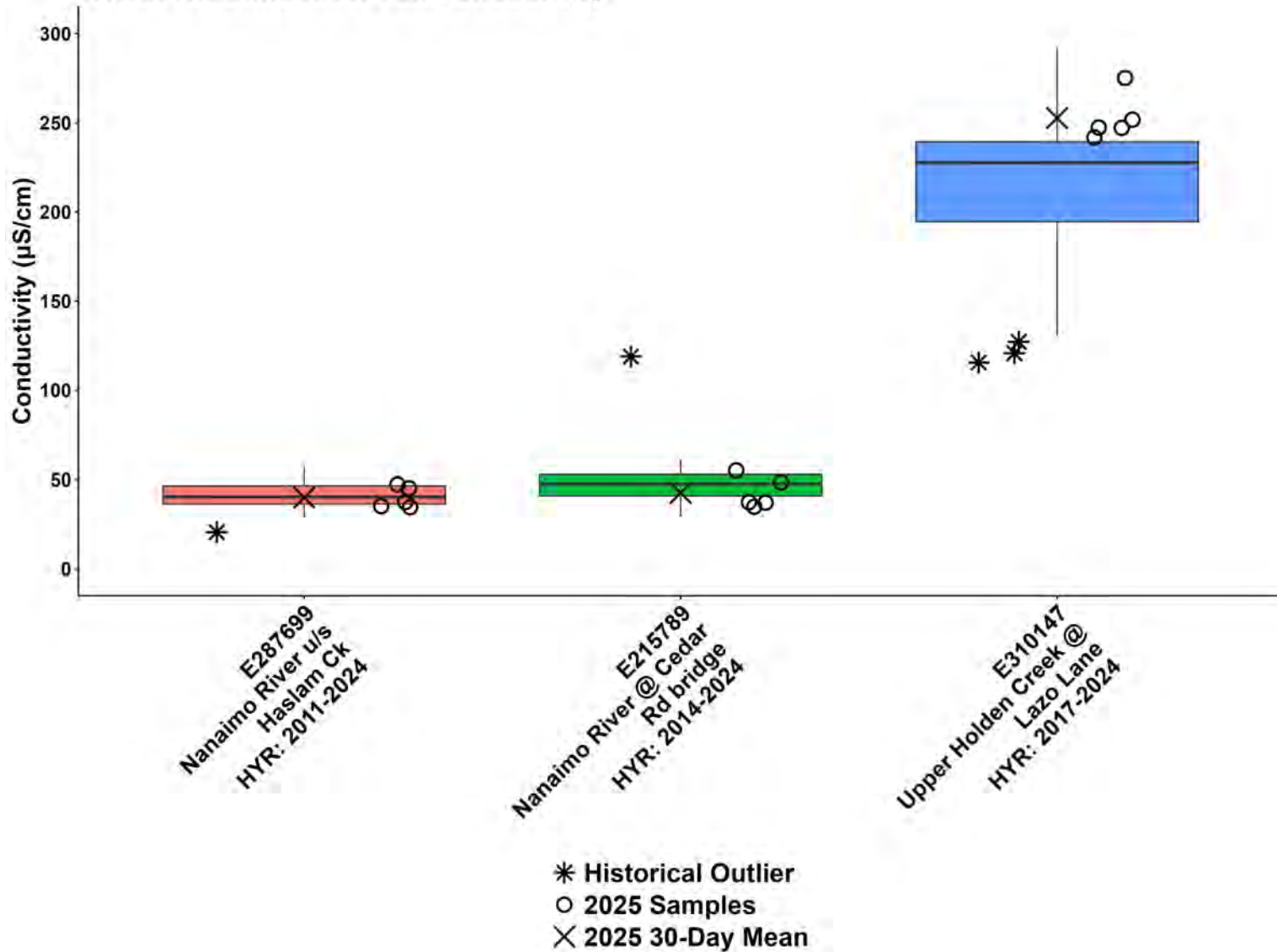
Note:  
HYR: indicates the year range for which historical data were included for a sample location.

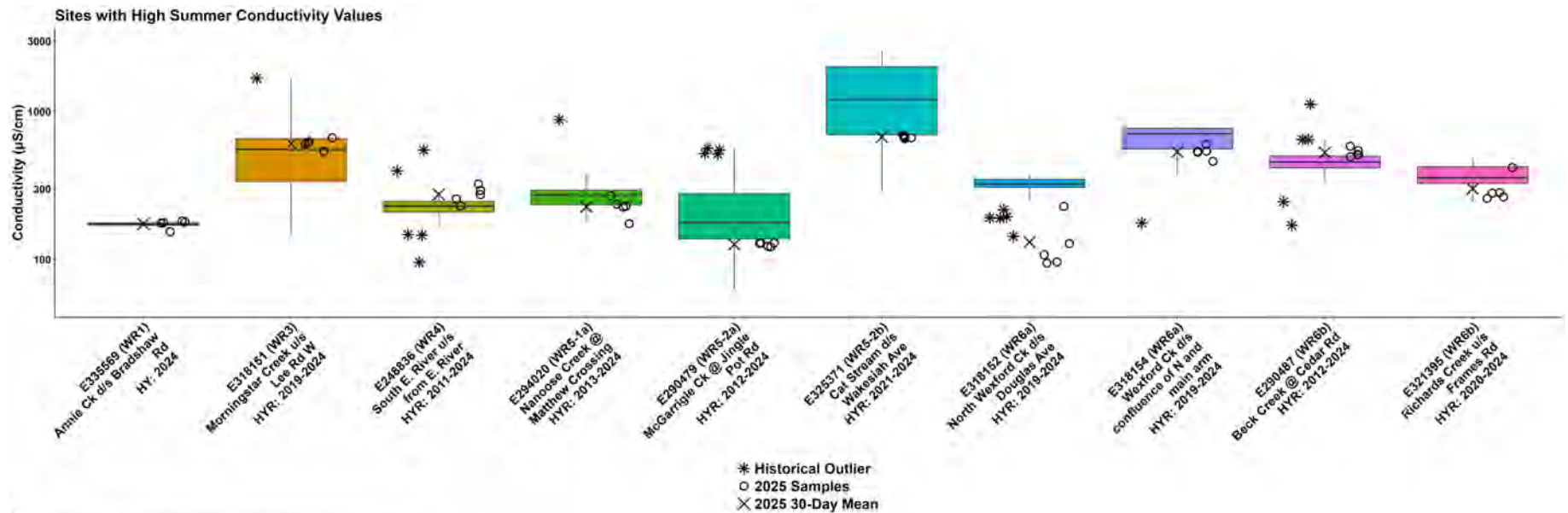


### WR6b: Nanaimo River Summer Conductivity



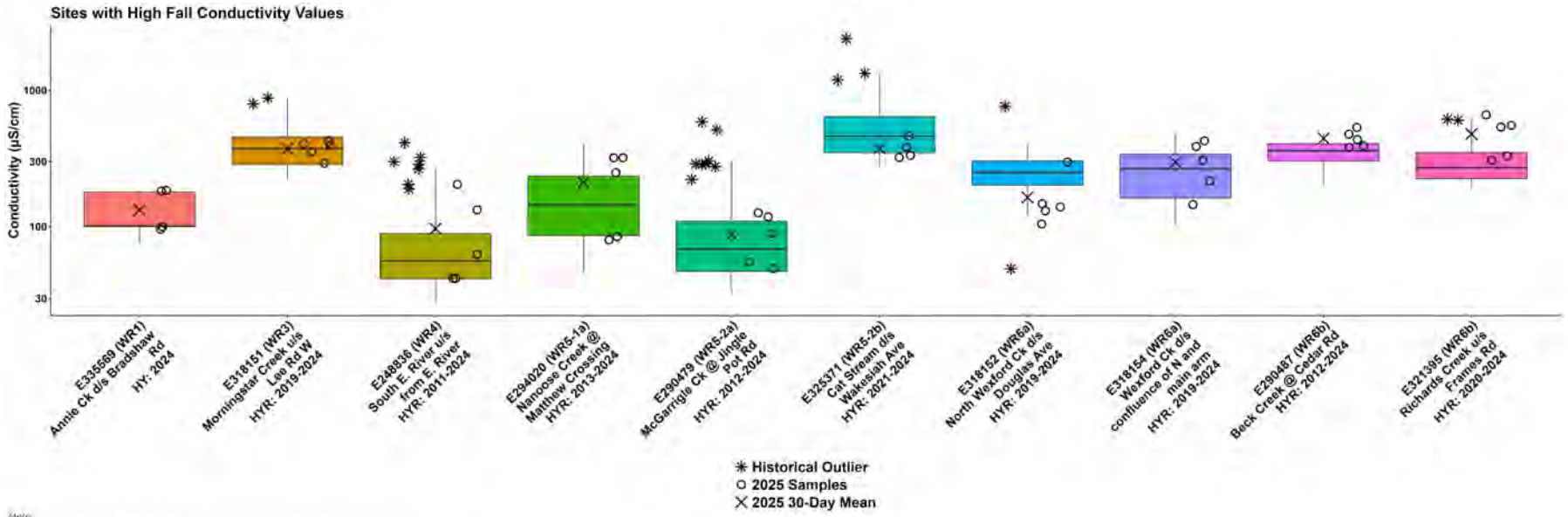
### WR6b: Nanaimo River Fall Conductivity



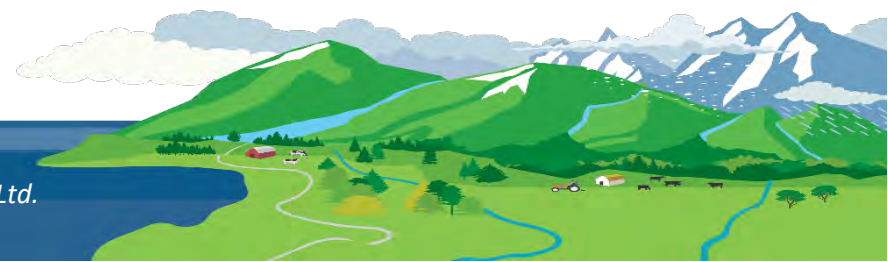


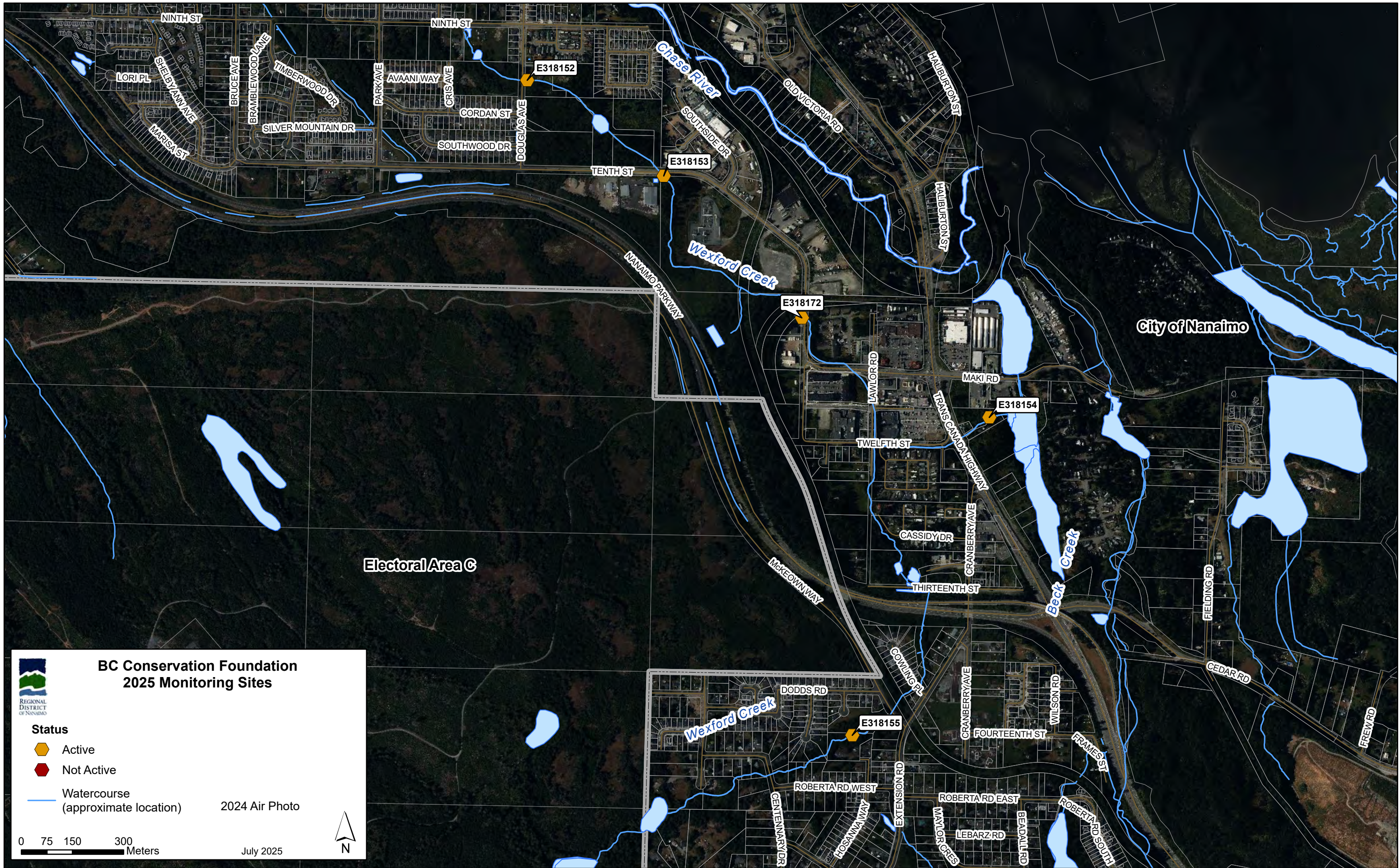
Note:  
HYR indicates the single year for which historical data was included for a sample location.  
HYR: indicates the year range for which historical data were provided for a sample location.








Note:  
 HY: indicates the single year for which historical data was included for a sample location.  
 HYR: indicates the year range for which historical data were included for a sample location.





**BC Conservation Foundation  
2025 Monitoring Sites**

**Status**

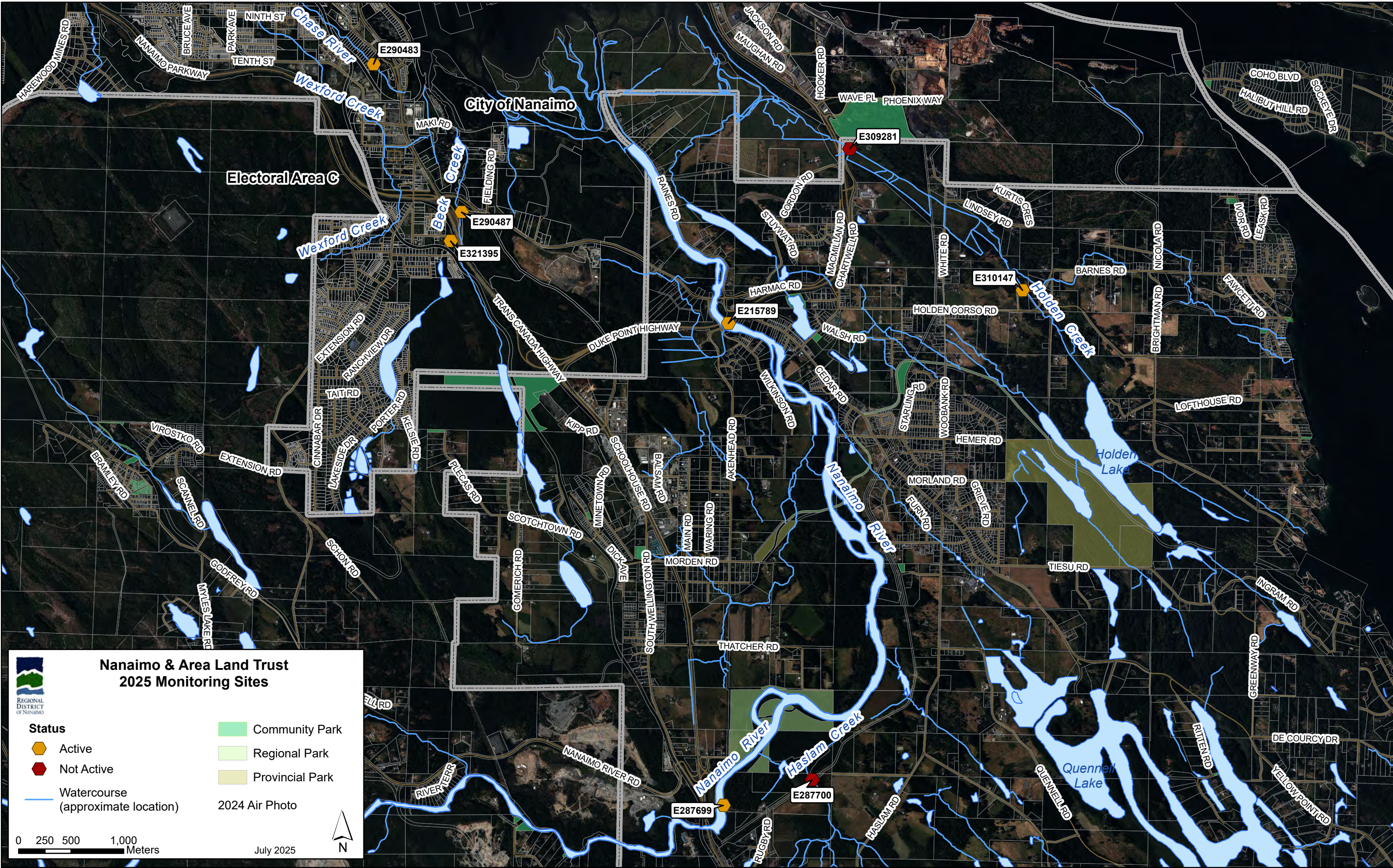
-  Active
-  Not Active
-  Watercourse (approximate location)

2024 Air Photo

0 75 150 300 Meters

July 2025

N



**Nanaimo & Area Land Trust  
2025 Monitoring Sites**

REGIONAL DISTRICT OF NANAIMO

<b>Status</b>	Community Park
Active	Regional Park
Not Active	Provincial Park
Watercourse (approximate location)	2024 Air Photo

0 250 500 1,000 Meters

July 2025

N