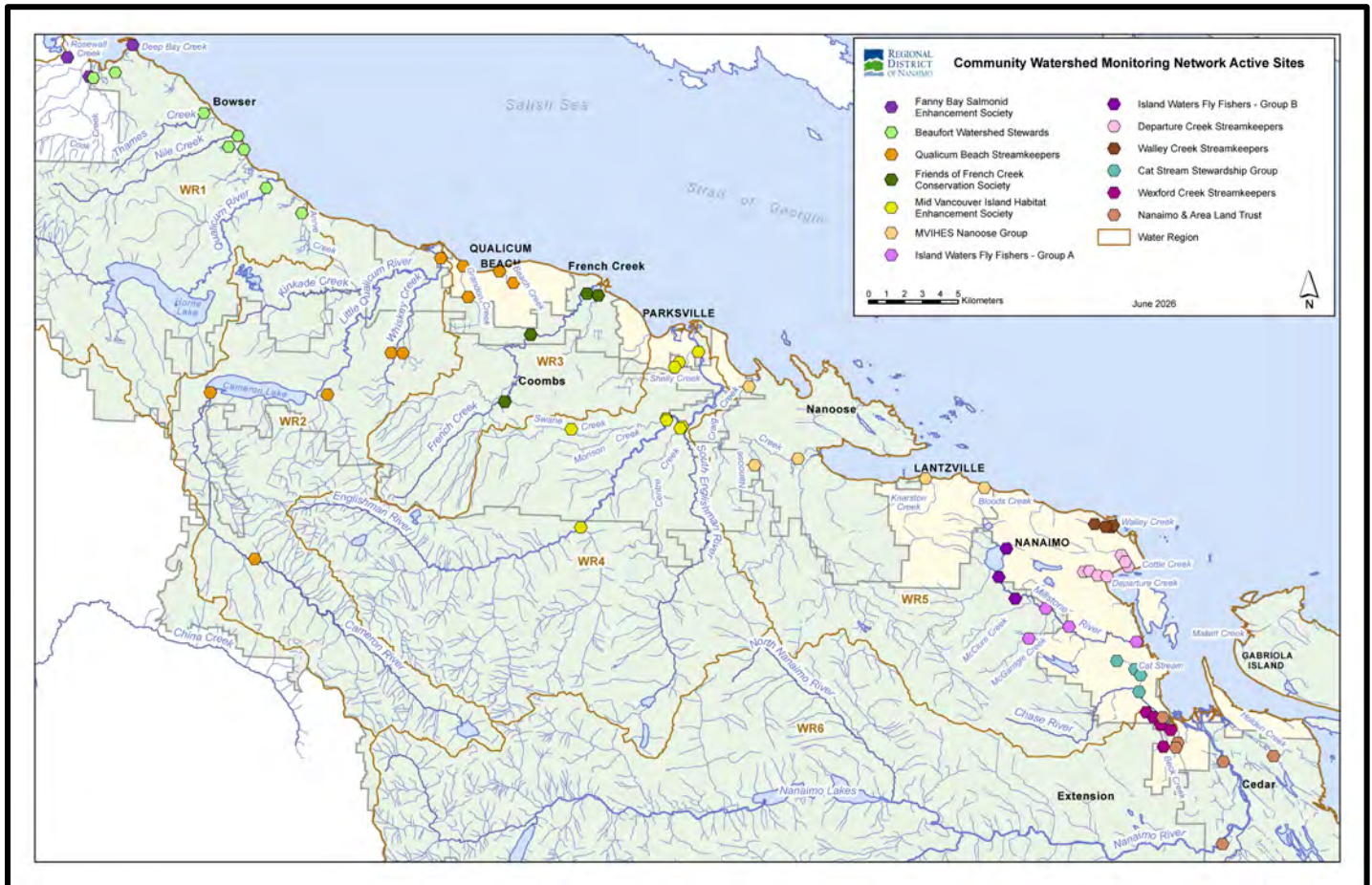


Community Watershed Monitoring Network 2025 Results by Water Region



Included in Water Region (WR) 5-2 package:

1. CWMN WR5-2 sample sites
2. How to interpret a box plot
3. Box Plot Comparison – 2025 data to previous years: *displayed by parameter (Turbidity, Dissolved Oxygen, Temperature, Conductivity) & sample period (summer, fall)*
4. Island Waters Fly Fishers (IWFF) map
5. Cat Stream Stewards (CSS) map
6. Nanaimo and Area Land Trust (NALT) map



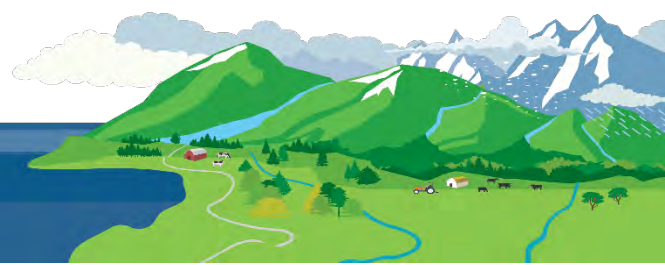
Water Region 5-2
sampled by:
Island Waters Fly Fishers (IWFF)
&
Cat Stream Stewards (CSS)
&
Nanaimo and Area Land Trust (NALT)



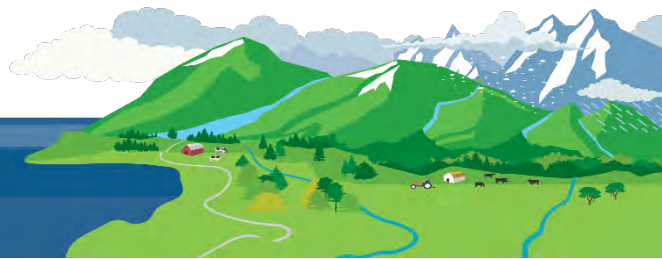
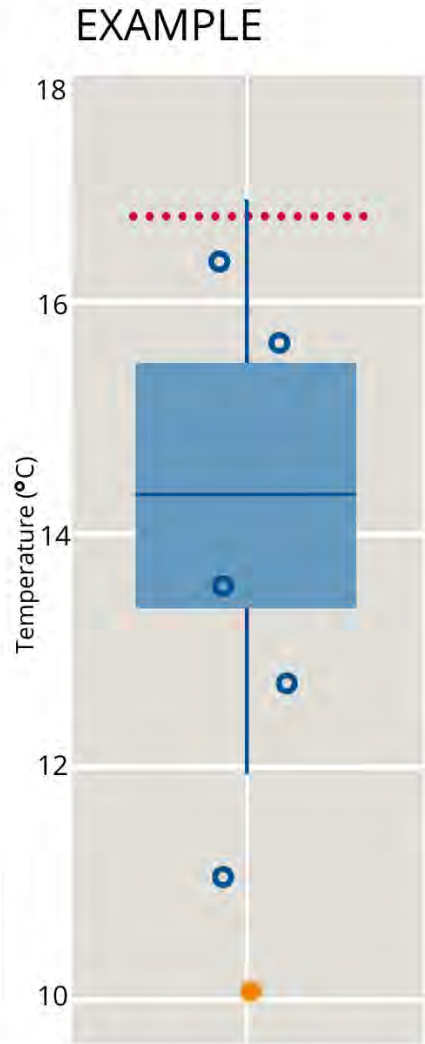
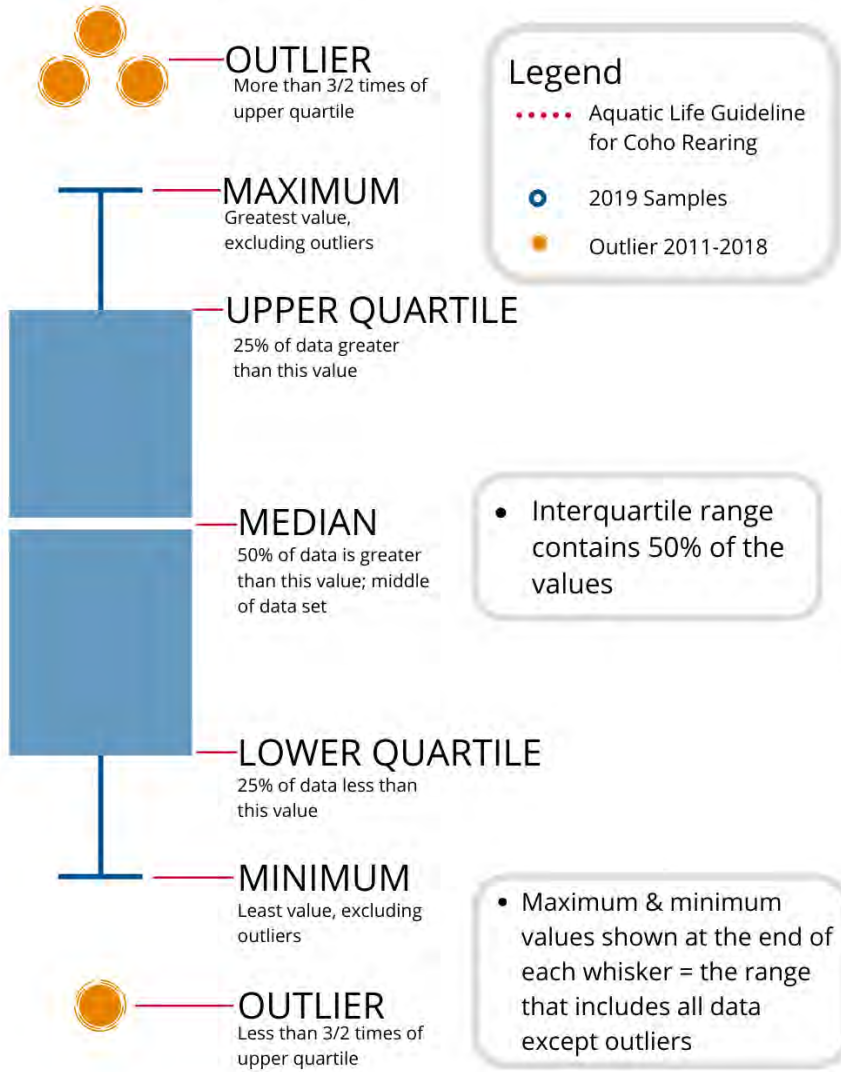
WR5-2 CWMN Sample Sites:

The table below shows the sites monitored by each of the streamkeeper organizations, as well as the number of years and which years a site was sampled. The number of years is important to keep in mind when interpreting the box plots as the plot for each site may contain a slightly different temporal range.

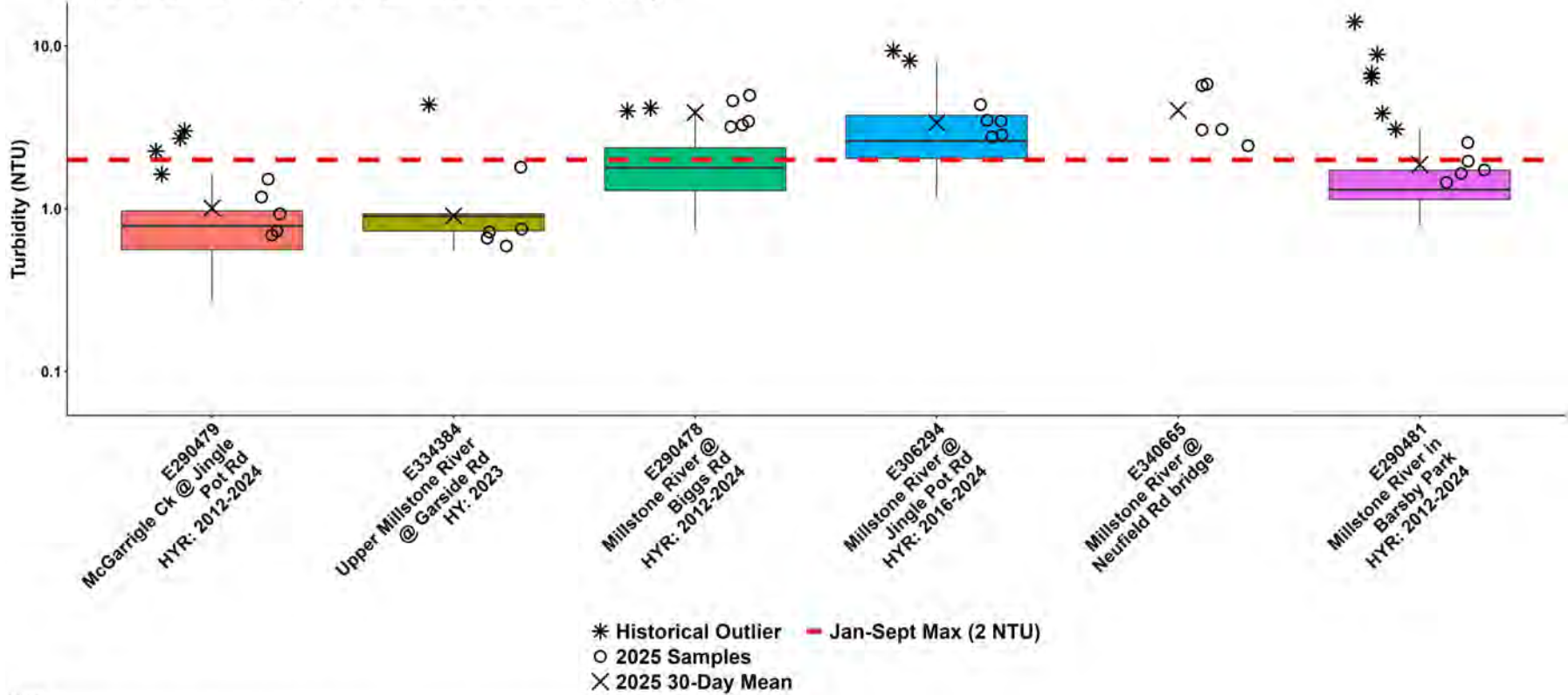
Group	EMS ID	Geographic Description	Total Years Sampled	Years Sampled
IWFF	E290478	Millstone River @ Biggs Road	14	2012 - present
IWFF	E334384	Upper Millstone River upstream Garside Rd	3	2023 - present
IWFF	E306294	Millstone River @ Jingle Pot Road	10	2016 - present
IWFF	E290479	McGarrigle Ck @ Jingle Pot Rd	14	2012 - present
IWFF	E340665	Millstone River u/s Newfield Bridge	1	2025 - present
IWFF	E290481	Millstone River in Barsby Park	14	2012 - present
CSS	E325371	Cat Stream d/s Wakesiah Ave	5	2021 - present
CSS	E325372	Cat Stream 10m u/s Pine St	5	2021 - present
CSS	E325373	Cat Stream at end of Albion St	5	2021 - present
CSS	E290486	Cat Stream @ Park above confluence with Chase River	14	2012 - present
NALT	E290483	Chase River @ Aebig	14	2012 - present



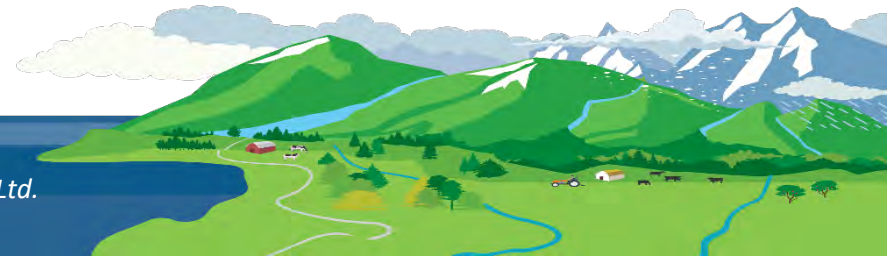
How to Interpret a Box Plot:



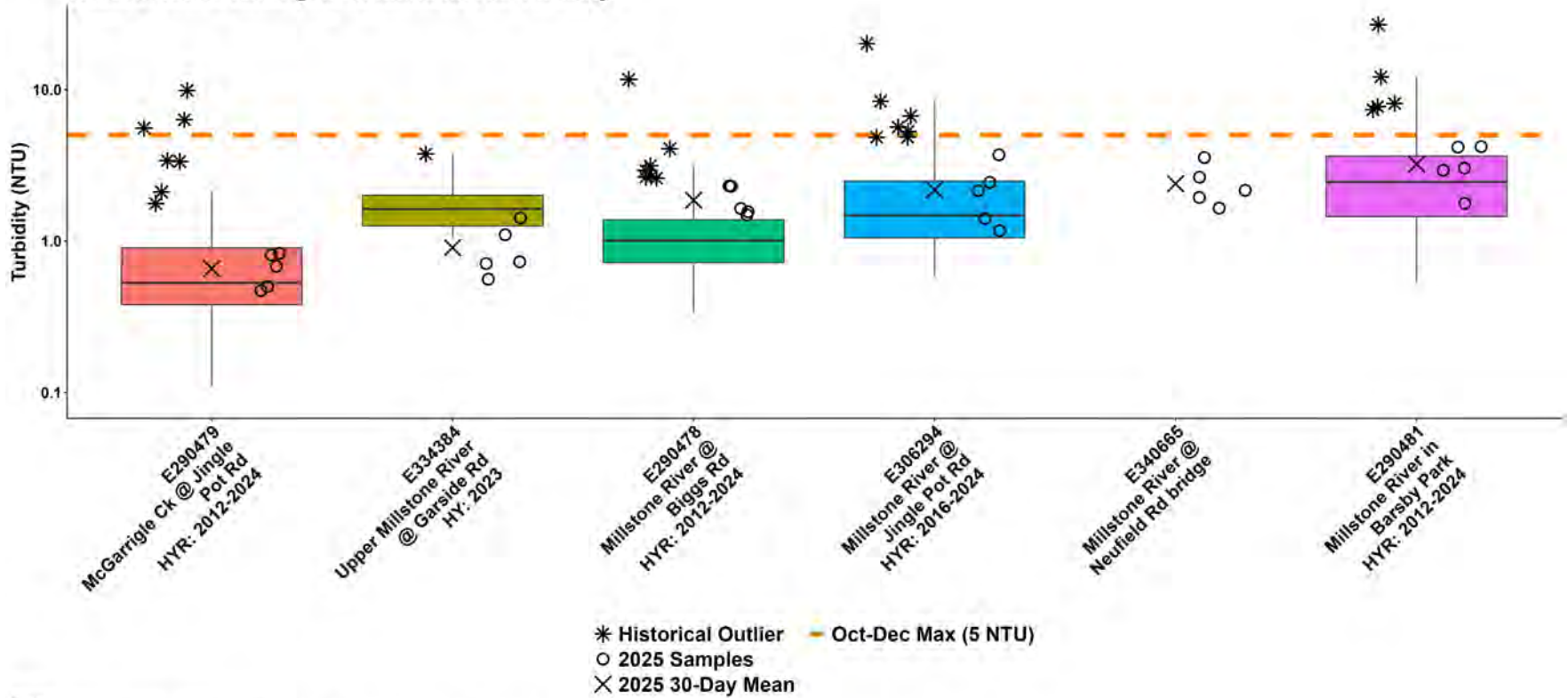
WR5-2a: South Wellington to Nanoose Summer Turbidity



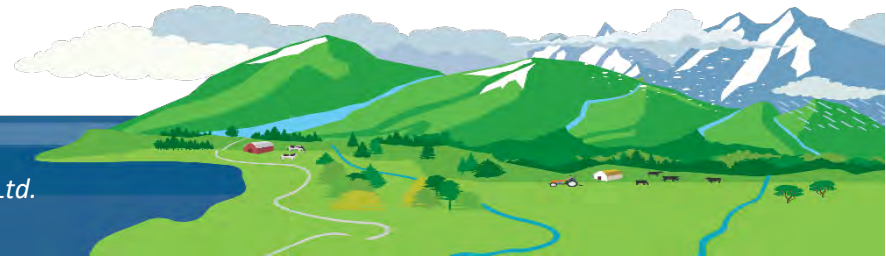
Note:
 HY: indicates the single year for which historical data was included for a sample location.
 HYR: indicates the year range for which historical data were included for a sample location.



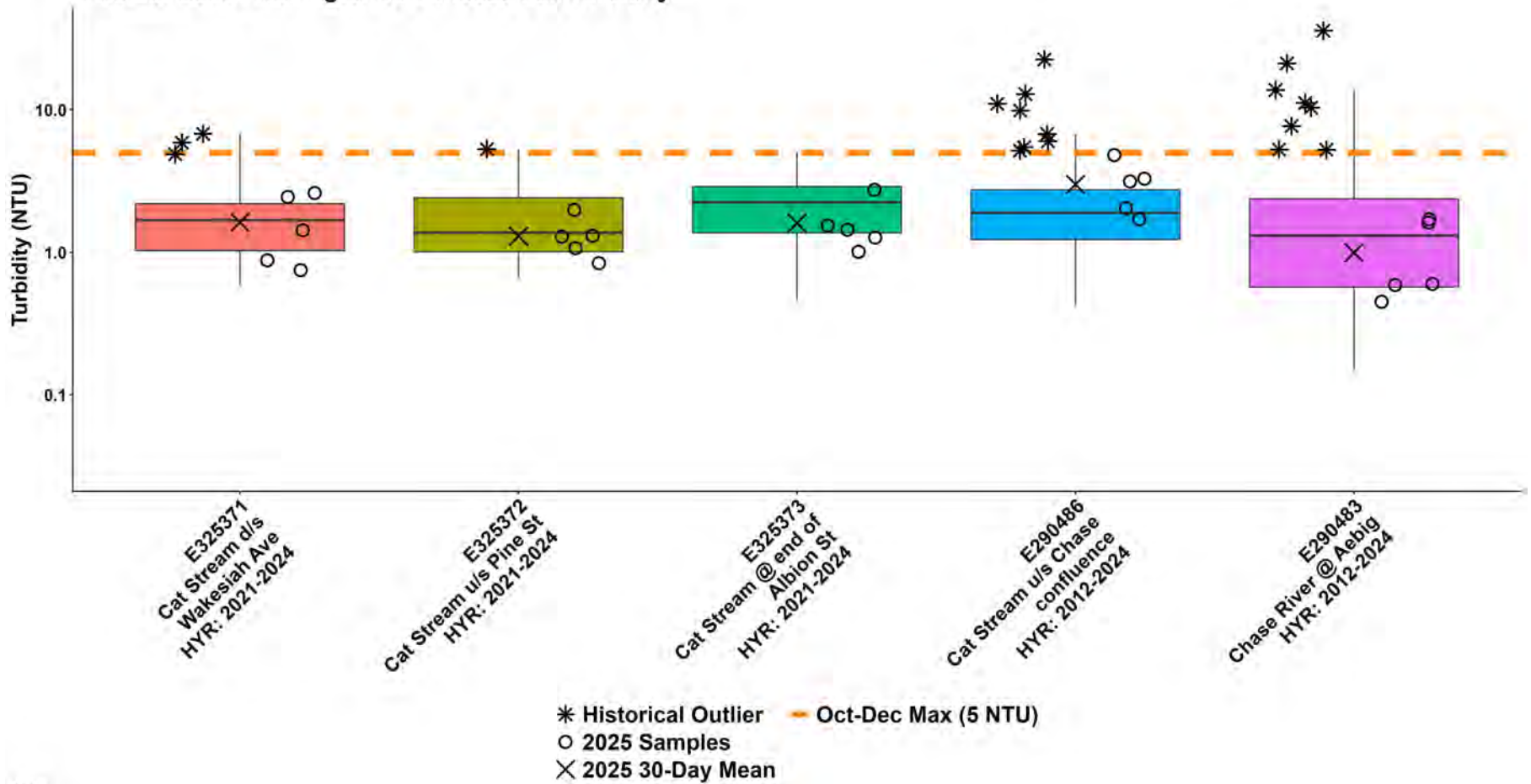
WR5-2a: South Wellington to Nanoose Fall Turbidity



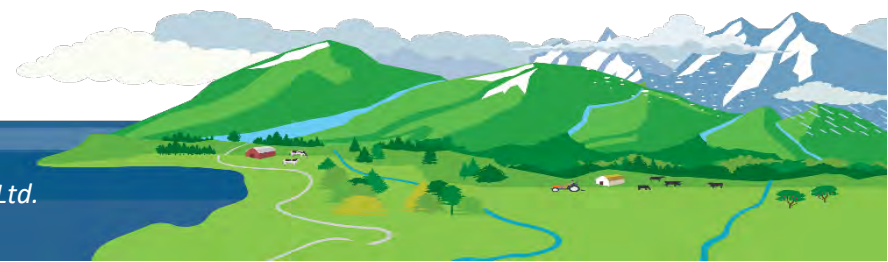
Note:
 HY: indicates the single year for which historical data was included for a sample location.
 HYR: indicates the year range for which historical data were included for a sample location.



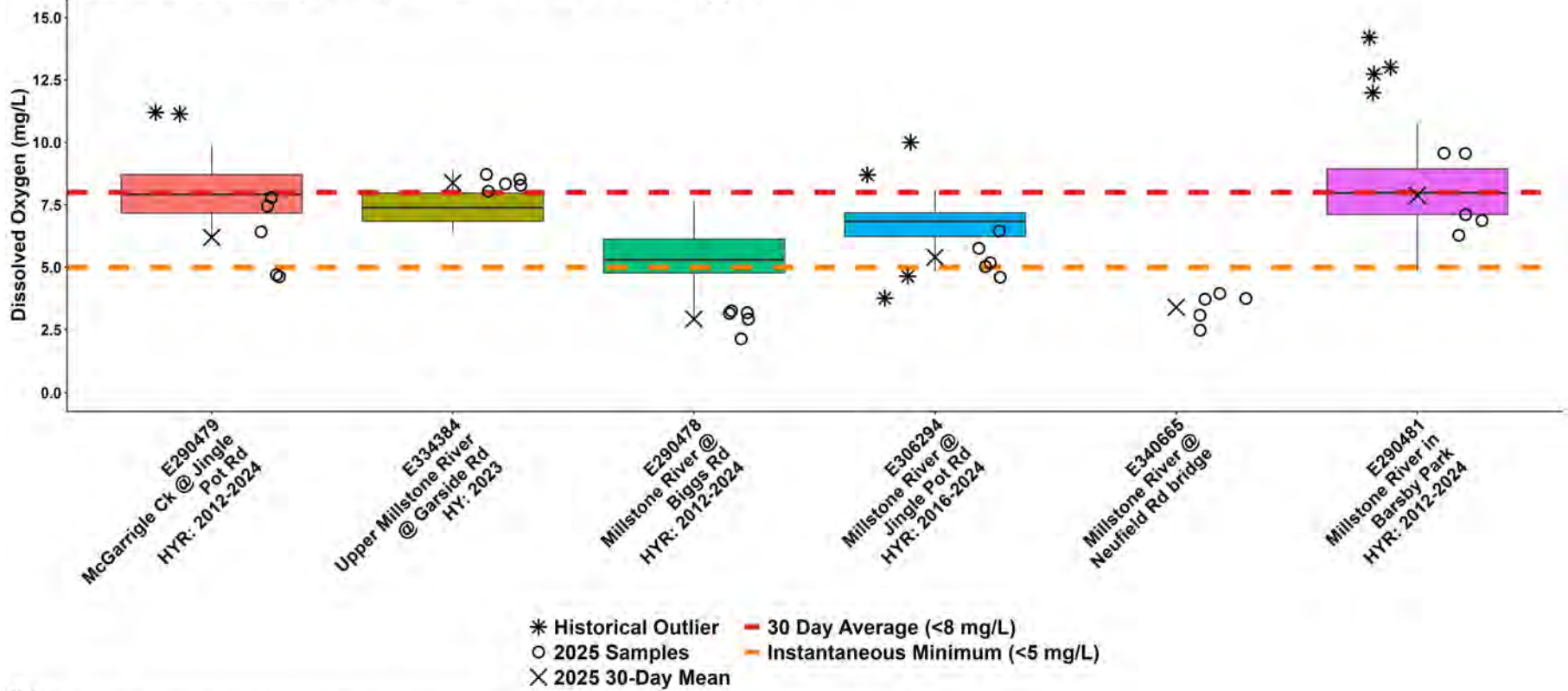
WR5-2b: South Wellington to Nanoose Fall Turbidity



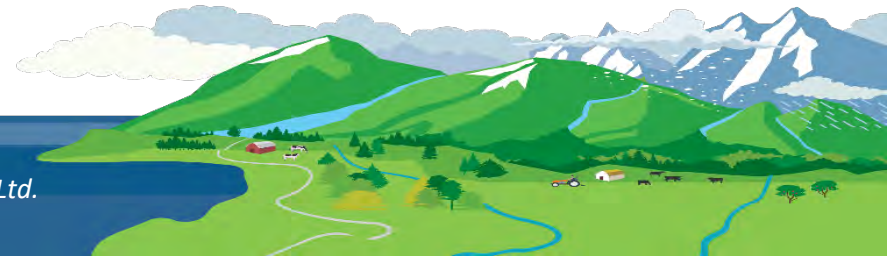
Note:
HYR: indicates the year range for which historical data were included for a sample location.



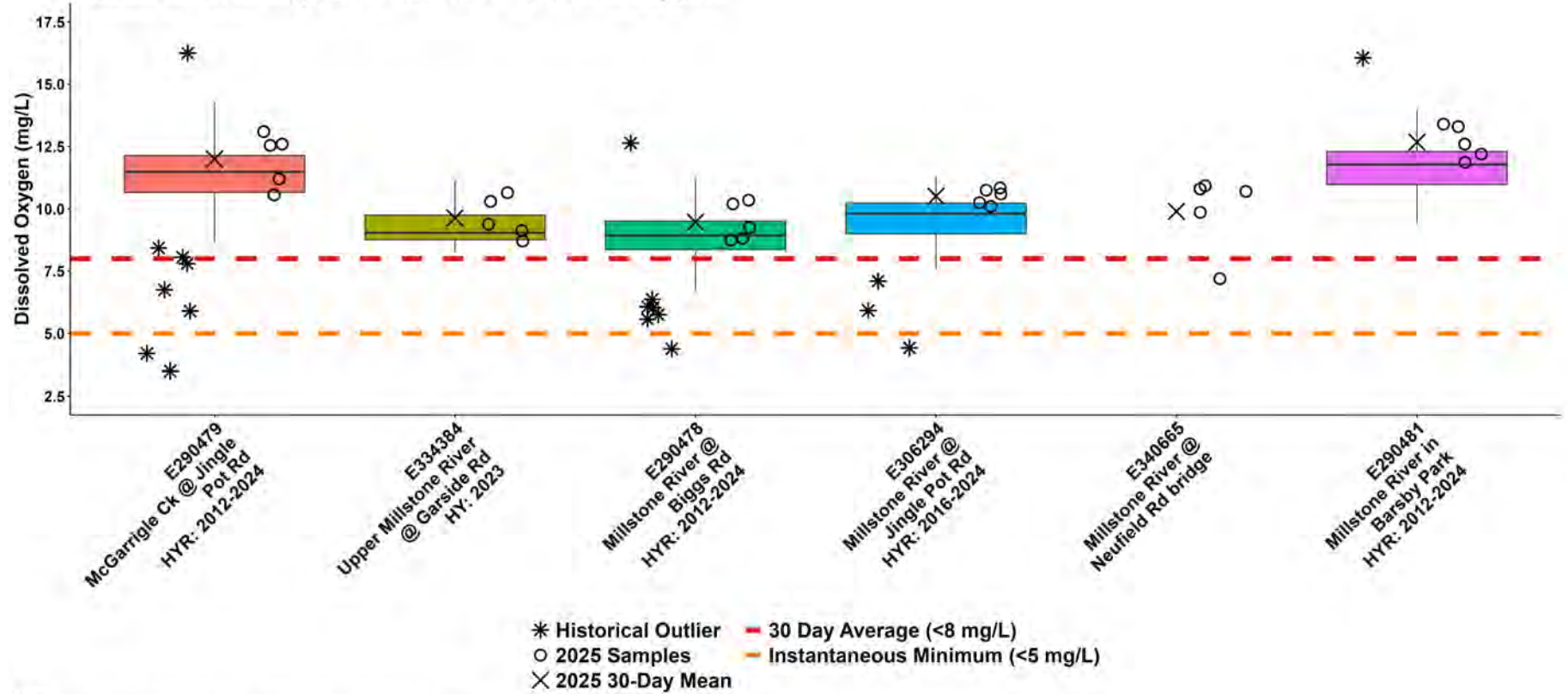
WR5-2a: South Wellington to Nanoose Summer Dissolved Oxygen



Note:
 HY: indicates the single year for which historical data was included for a sample location.
 HYR: indicates the year range for which historical data were included for a sample location.



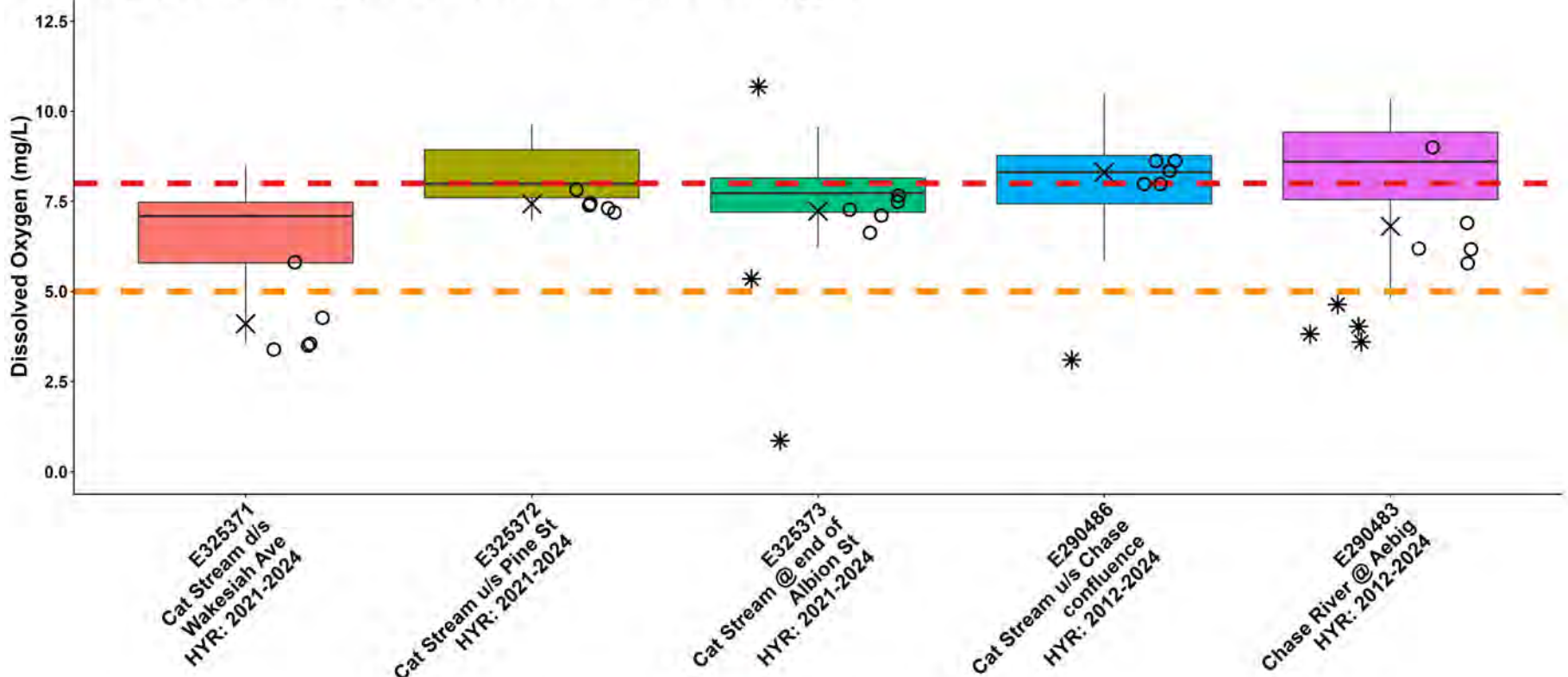
WR5-2a: South Wellington to Nanoose Fall Dissolved Oxygen



Note:
 HY: indicates the single year for which historical data was included for a sample location.
 HYR: indicates the year range for which historical data were included for a sample location.

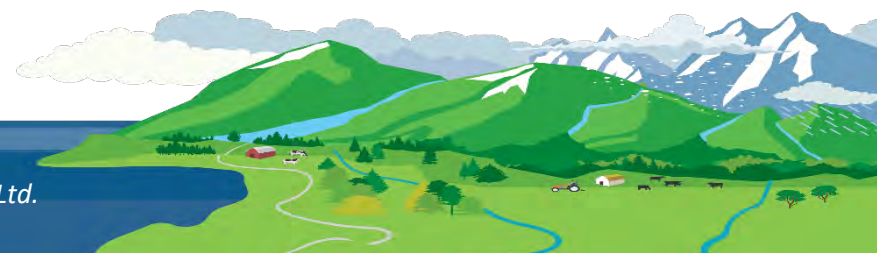


WR5-2b: South Wellington to Nanoose Summer Dissolved Oxygen

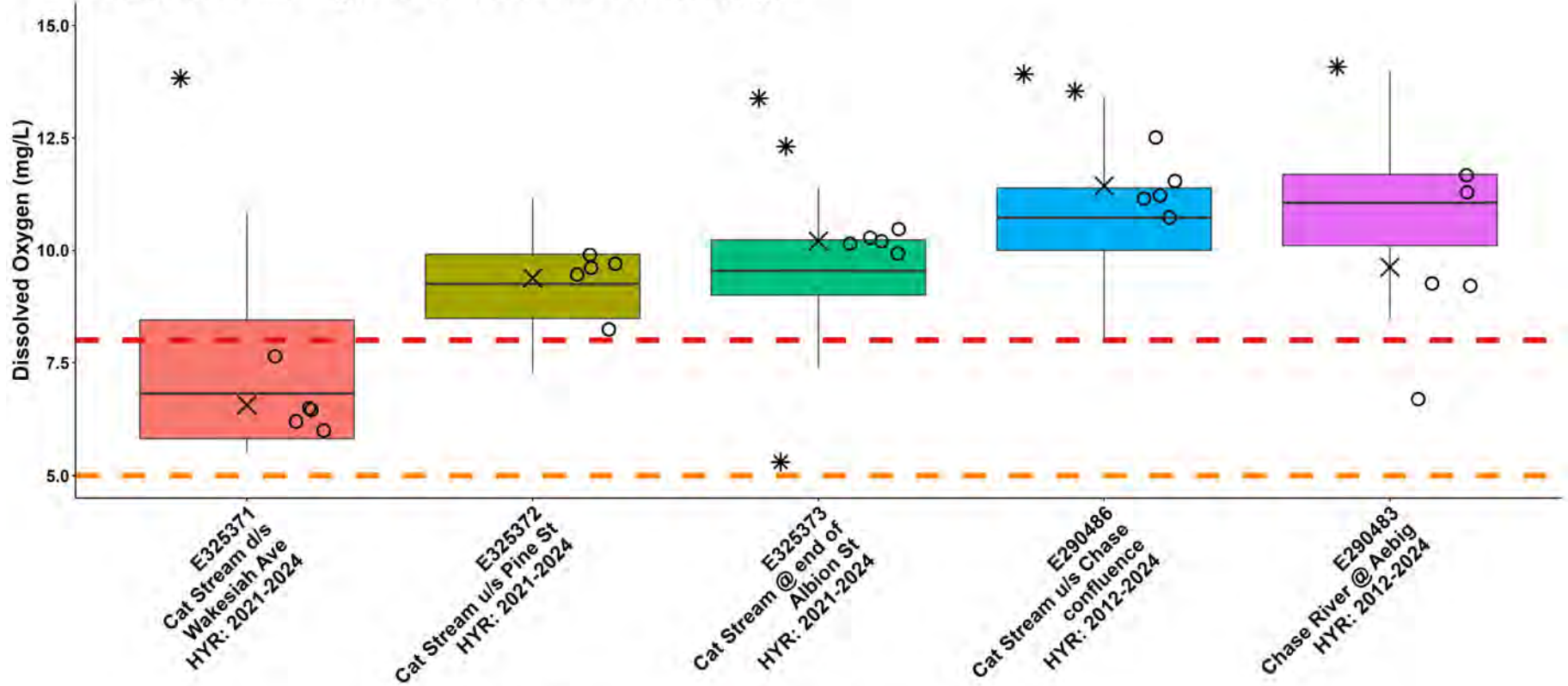


* Historical Outlier - 30 Day Average (<8 mg/L)
 ○ 2025 Samples - Instantaneous Minimum (<5 mg/L)
 X 2025 30-Day Mean

Note: HYR: indicates the year range for which historical data were included for a sample location.

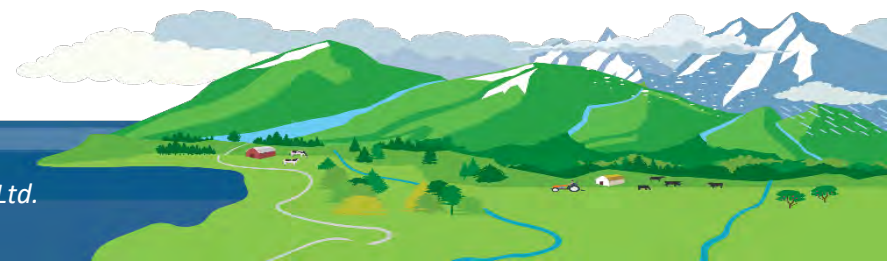


WR5-2b: South Wellington to Nanoose Fall Dissolved Oxygen

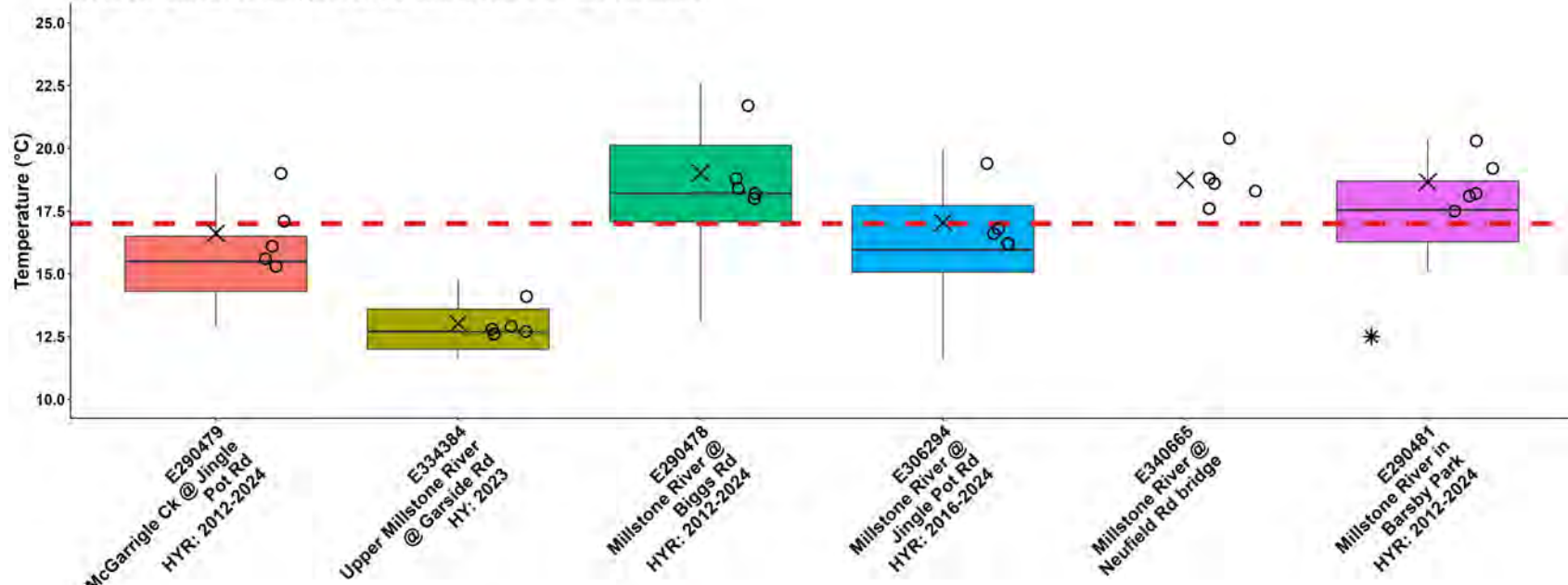


* Historical Outlier - 30 Day Average (<8 mg/L)
 ○ 2025 Samples - Instantaneous Minimum (<5 mg/L)
 × 2025 30-Day Mean

Note:
HYR: indicates the year range for which historical data were included for a sample location.



WR5-2a: South Wellington to Nanoose Summer Temperature



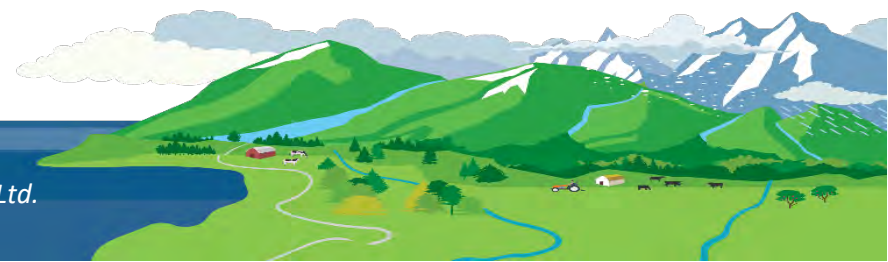
* Historical Outlier — Aquatic Life Guideline for Coho Rearing (17°C)

○ 2025 Samples

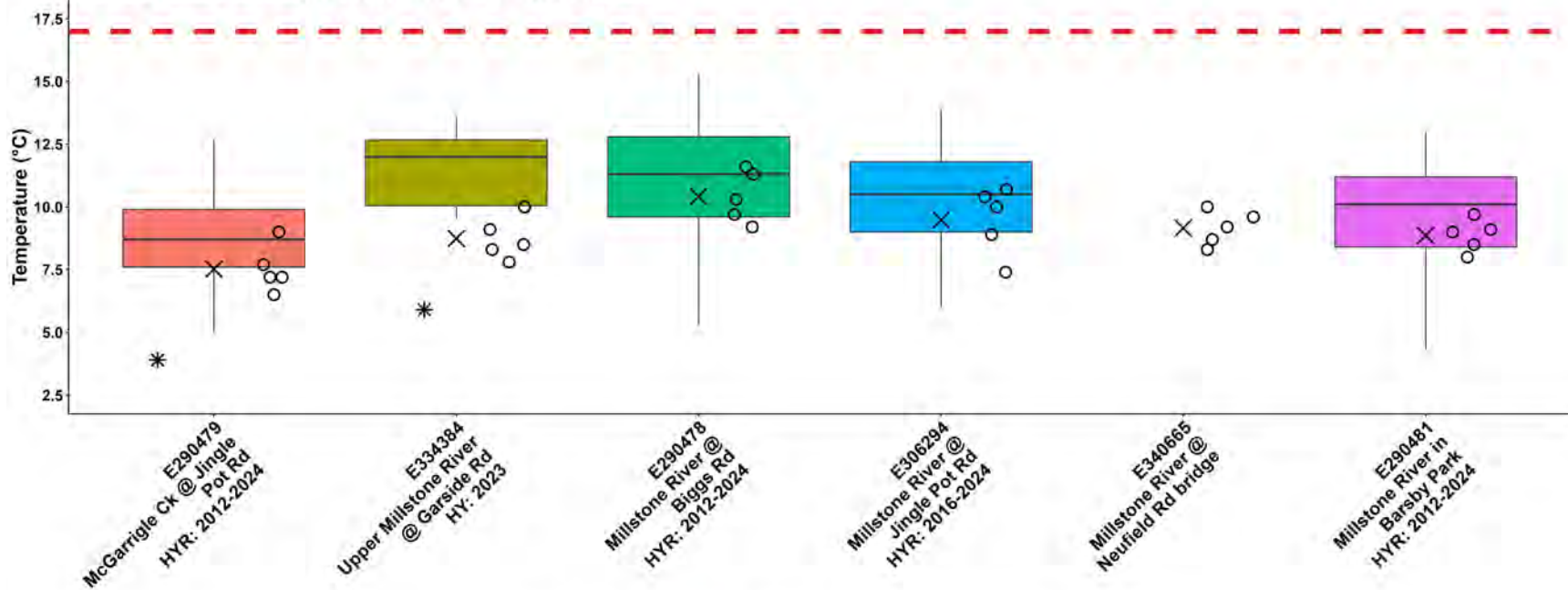
× 2025 30-Day Mean

Note:

HY: indicates the single year for which historical data was included for a sample location.
 HYR: indicates the year range for which historical data were included for a sample location.

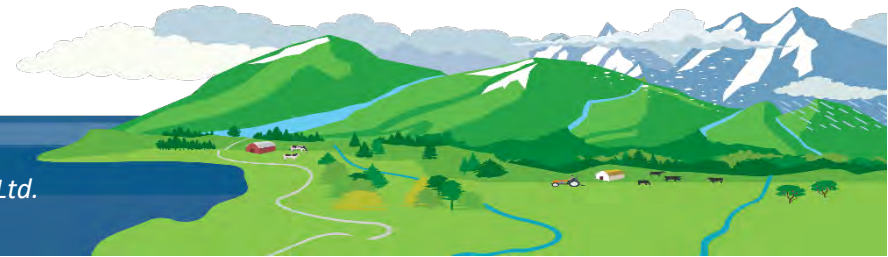


WR5-2a: South Wellington to Nanoose Fall Temperature

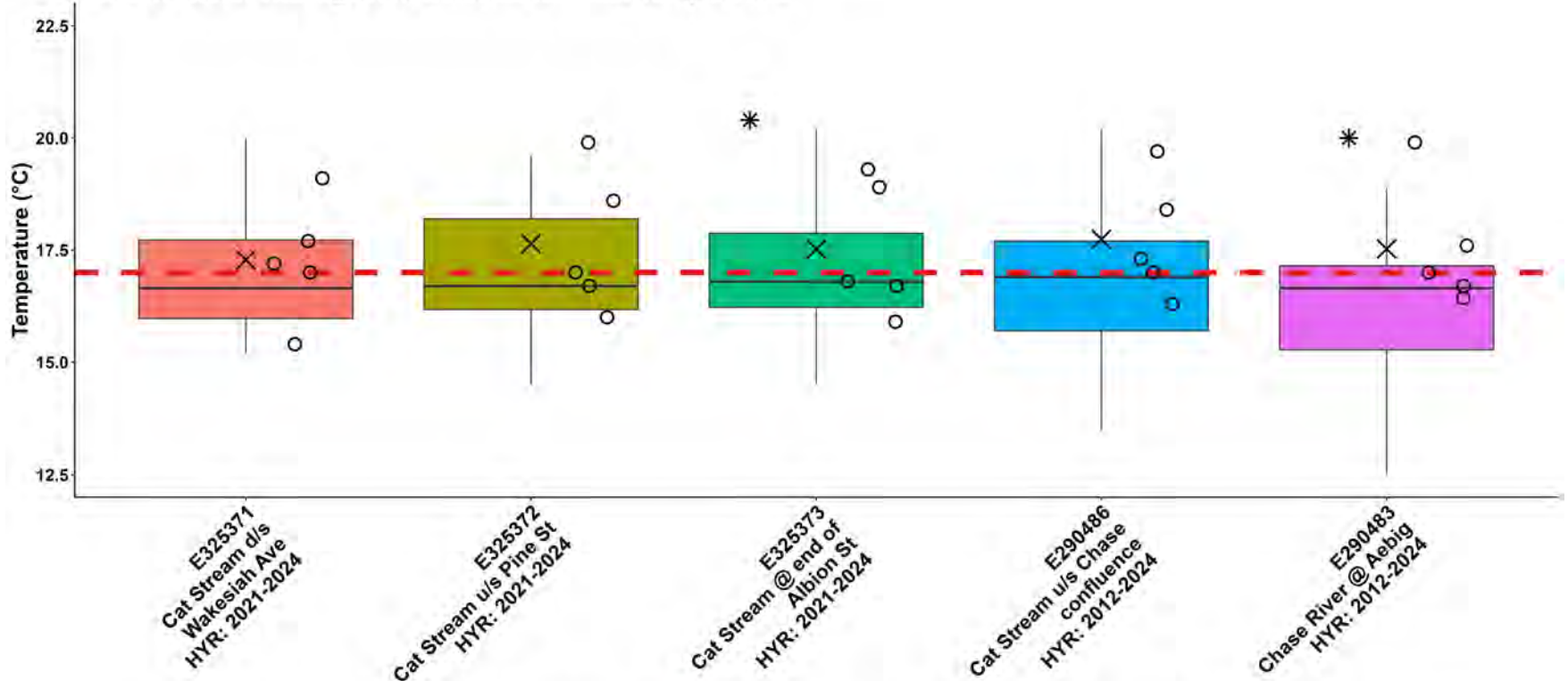


* Historical Outlier - Aquatic Life Guideline for Coho Rearing (17°C)
 ○ 2025 Samples
 × 2025 30-Day Mean

Note:
 HY: indicates the single year for which historical data was included for a sample location.
 HYR: indicates the year range for which historical data were included for a sample location.

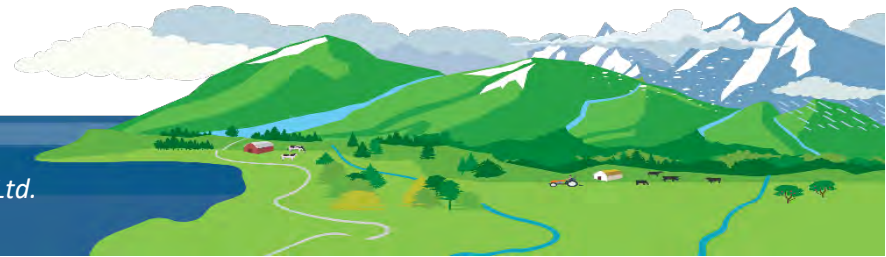


WR5-2b: South Wellington to Nanoose Summer Temperature

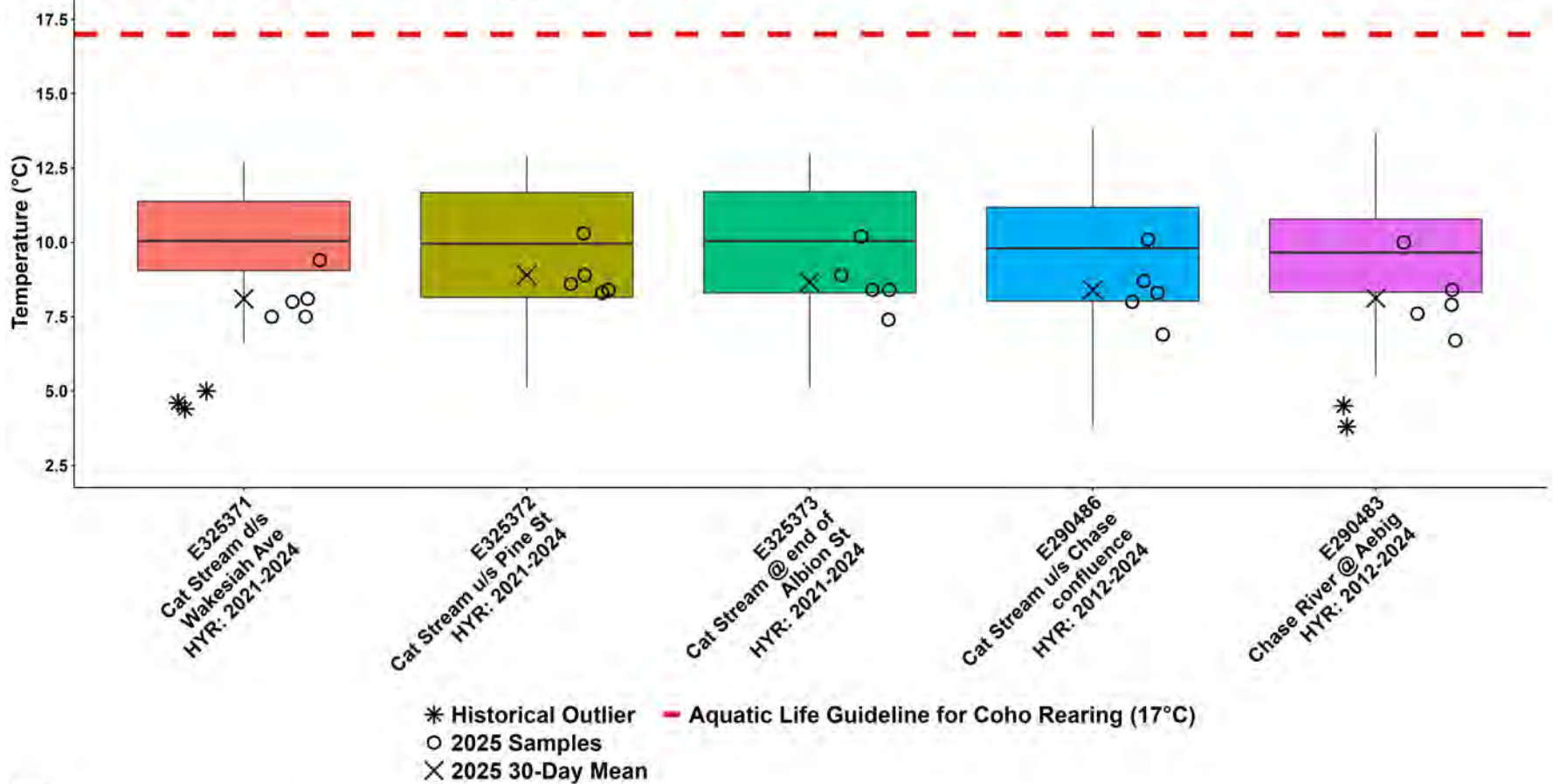


* Historical Outlier - Aquatic Life Guideline for Coho Rearing (17°C)
 ○ 2025 Samples
 X 2025 30-Day Mean

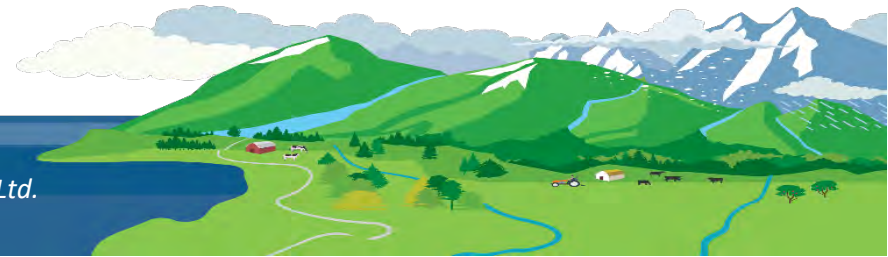
Note:
HYR: indicates the year range for which historical data were included for a sample location.



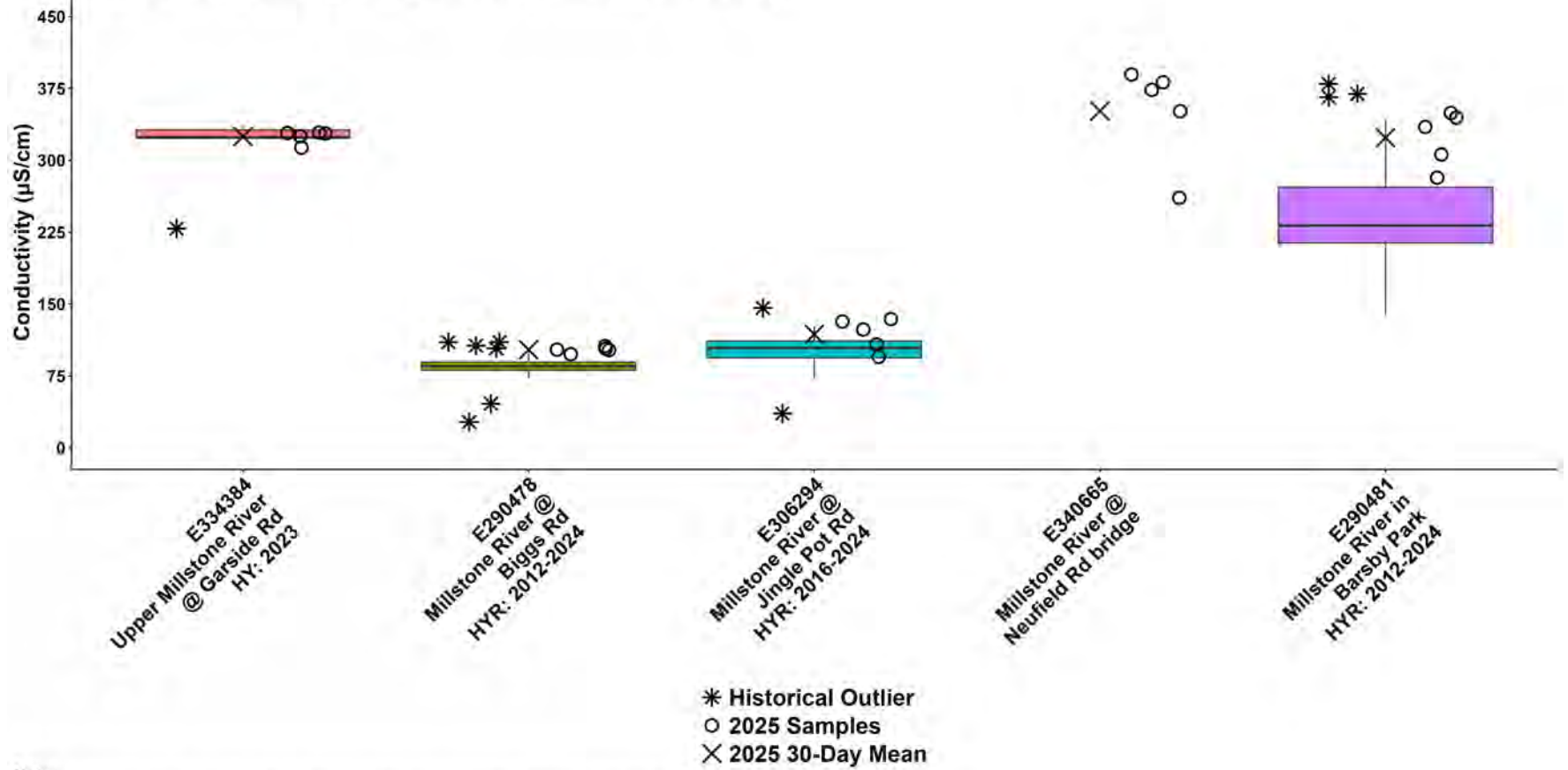
WR5-2b: South Wellington to Nanoose Fall Temperature



Note:
HYR: indicates the year range for which historical data were included for a sample location.



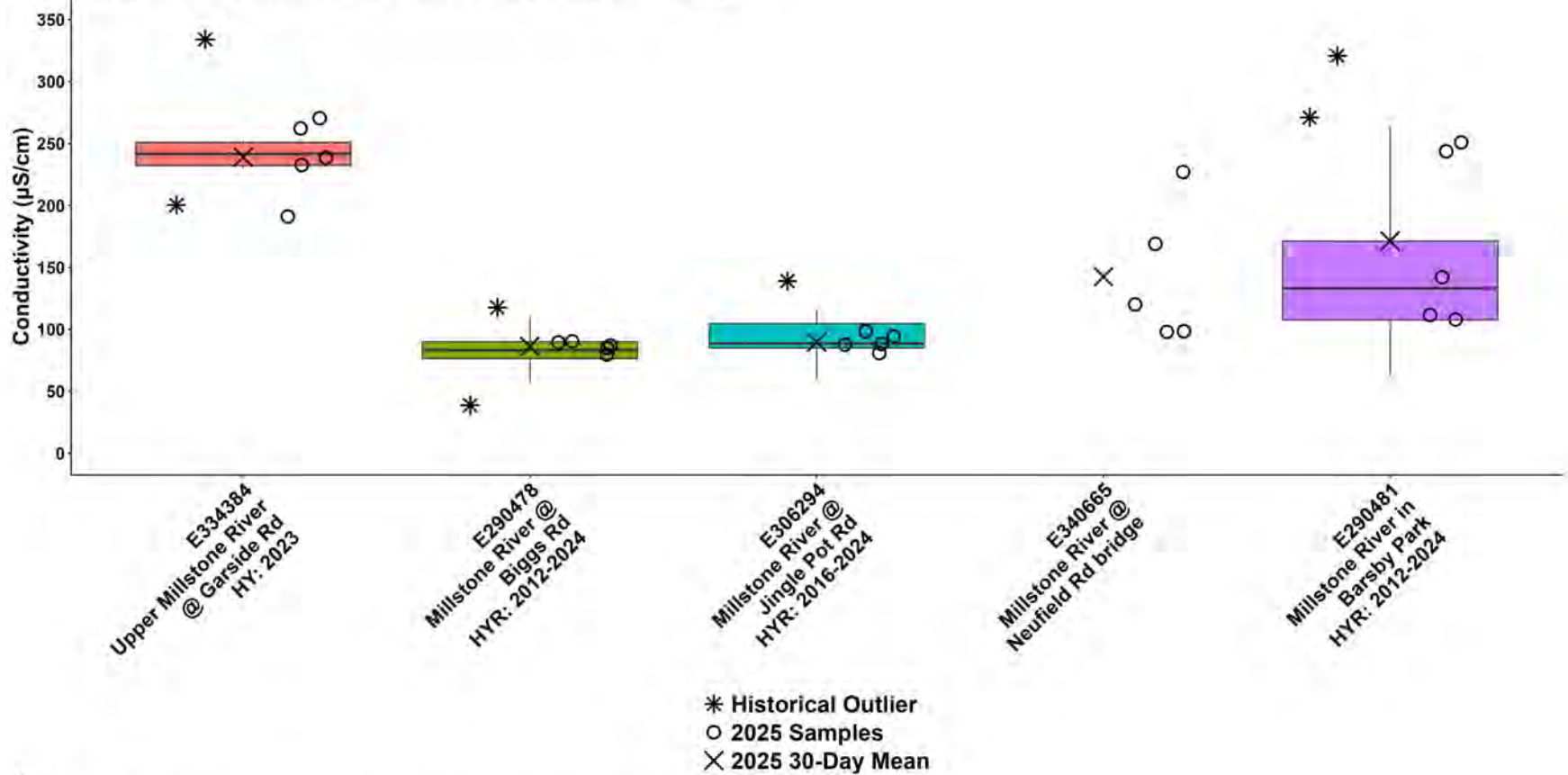
WR5-2a: South Wellington to Nanoose Summer Conductivity



Note:
 HY: indicates the single year for which historical data was included for a sample location.
 HYR: indicates the year range for which historical data were included for a sample location.



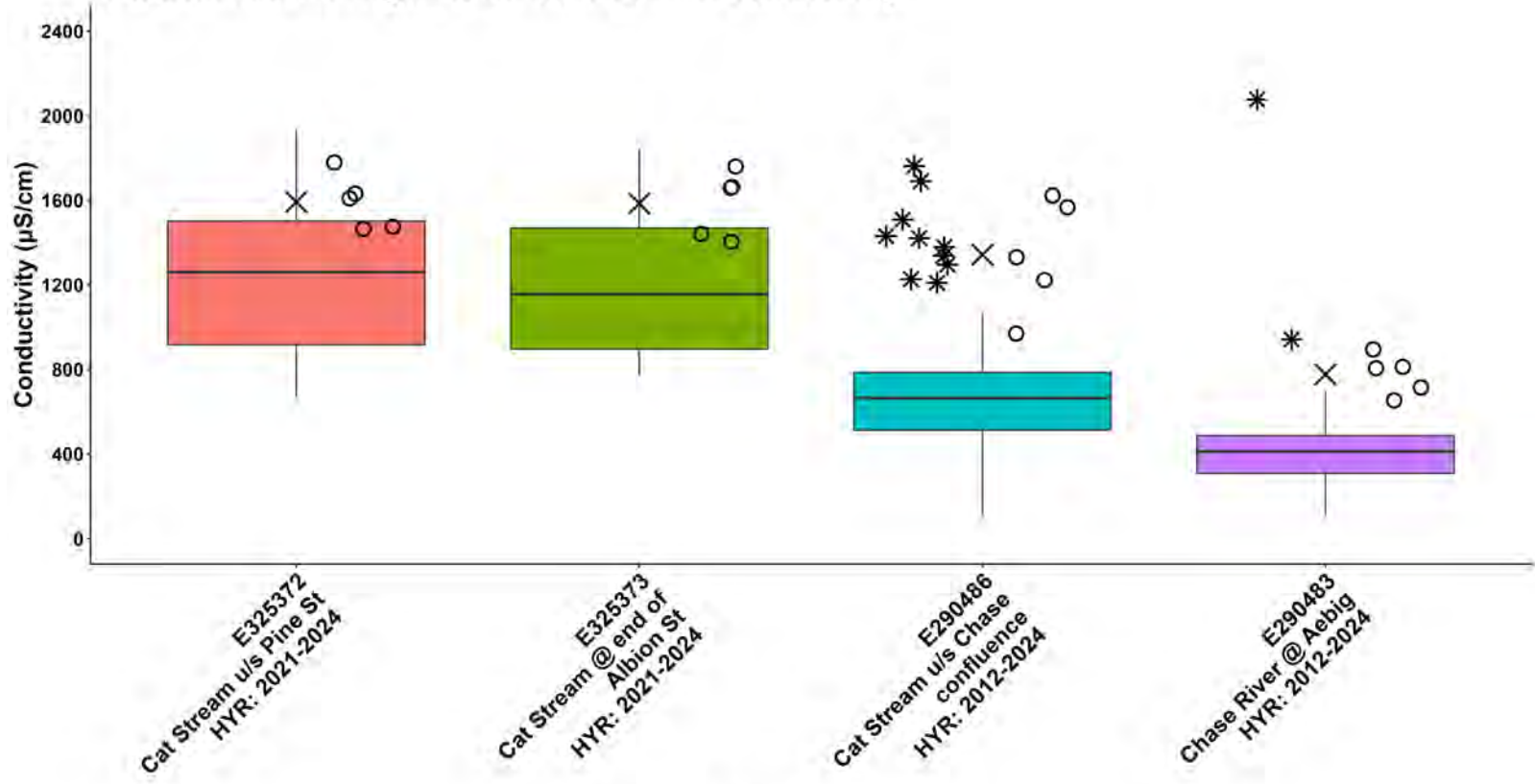
WR5-2a: South Wellington to Nanoose Fall Conductivity



Note:
 HY: indicates the single year for which historical data was included for a sample location.
 HYR: indicates the year range for which historical data were included for a sample location.

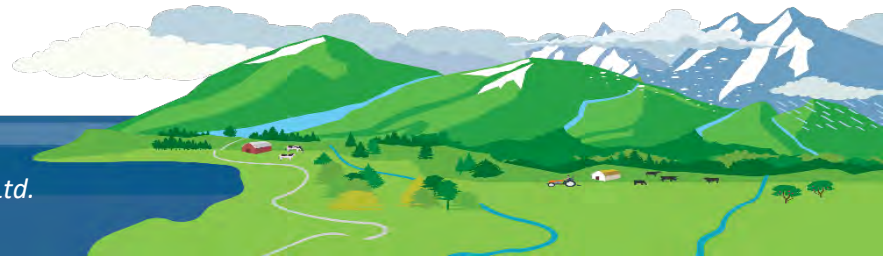


WR5-2b: South Wellington to Nanoose Summer Conductivity

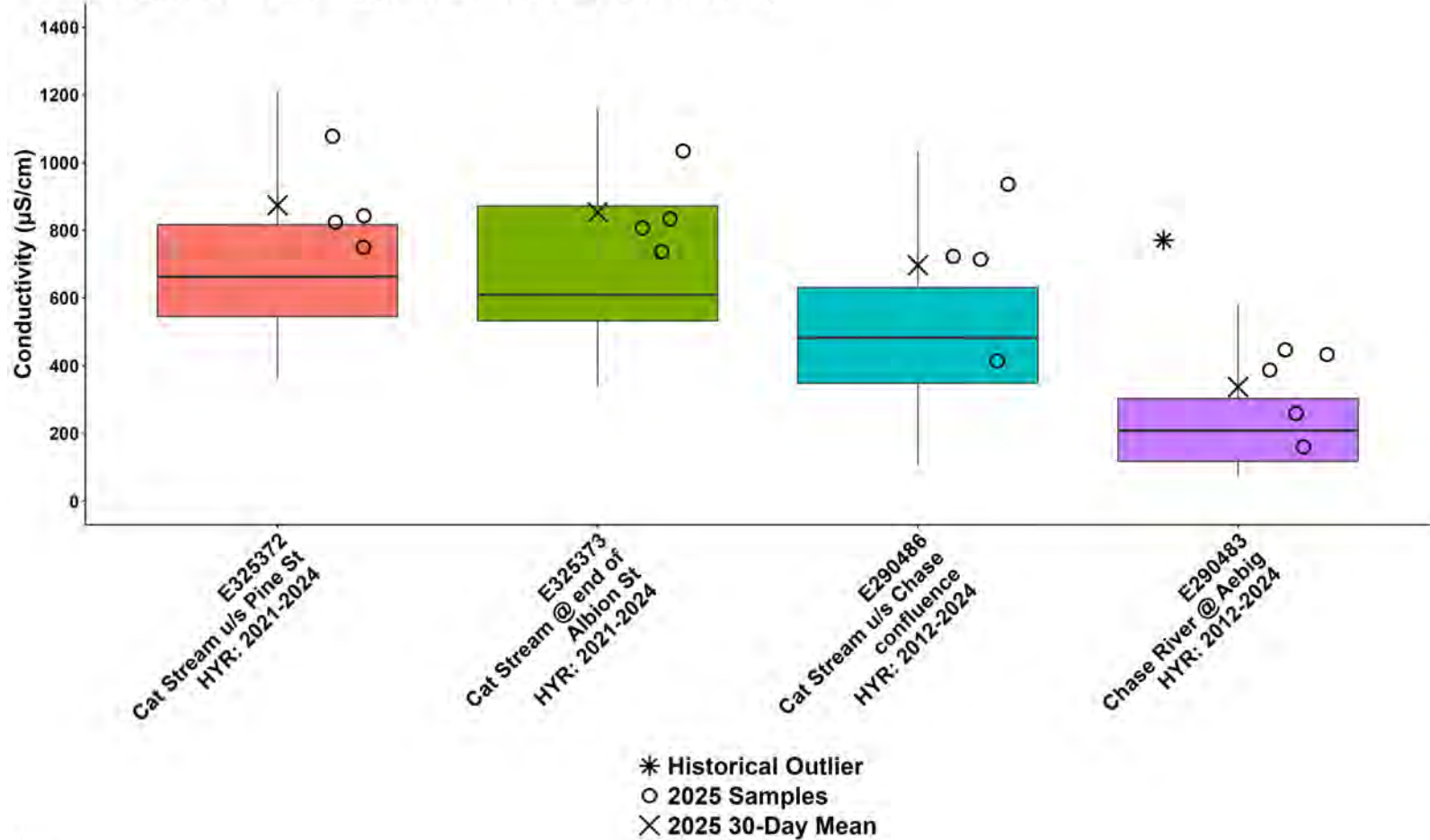


* Historical Outlier
 ○ 2025 Samples
 X 2025 30-Day Mean

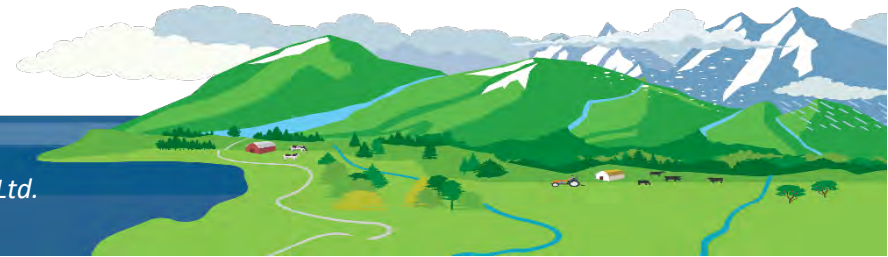
Note:
 HYR: indicates the year range for which historical data were included for a sample location.

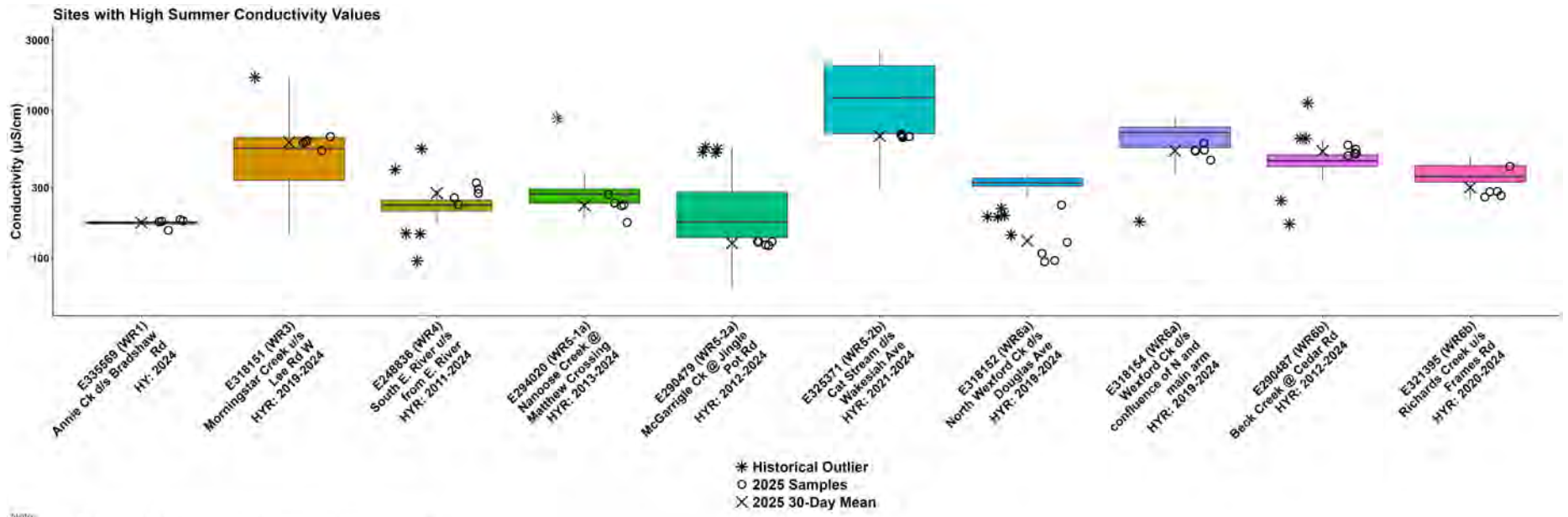


WR5-2b: South Wellington to Nanoose Fall Conductivity



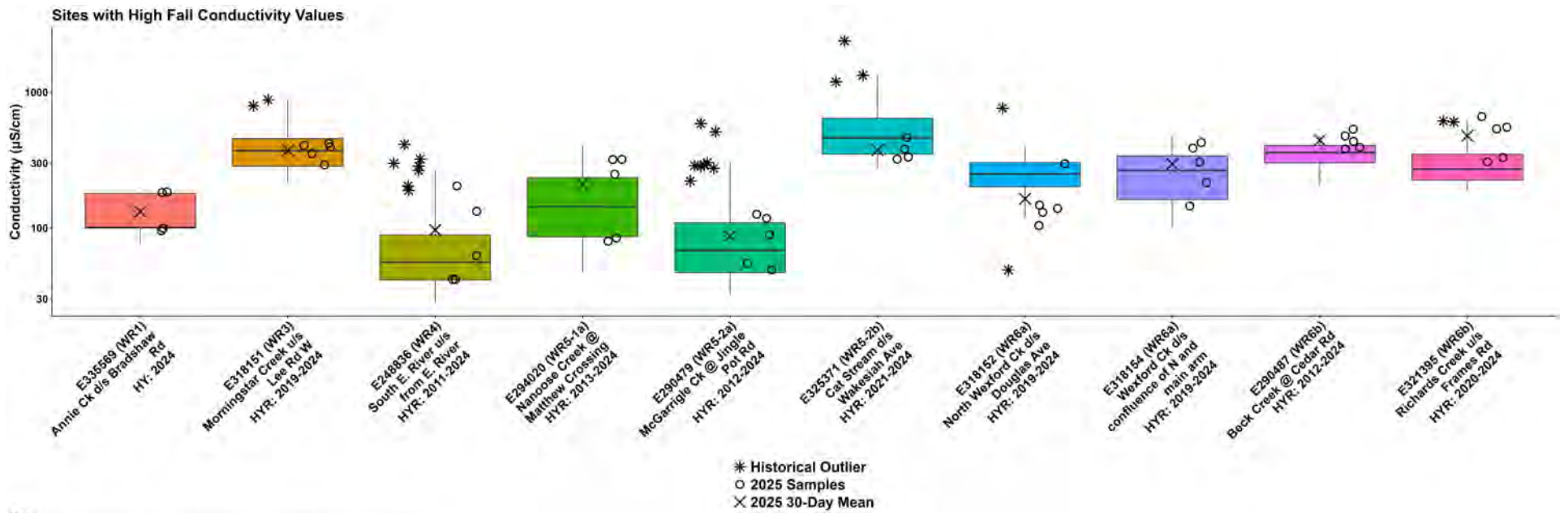
Note:
HYR: indicates the year range for which historical data were included for a sample location.



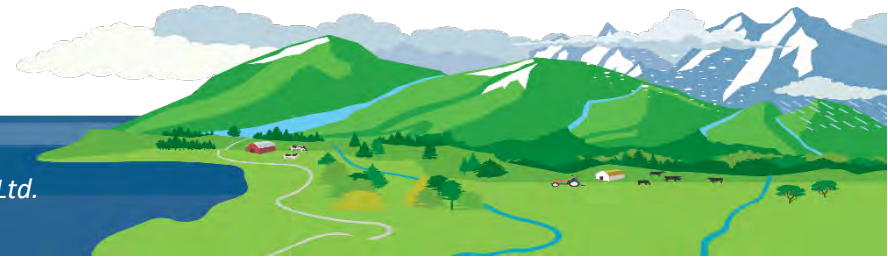


HYR: indicates the single year for which historical data was included for a sample location.
 HYR: indicates the year range for which historical data was included for a sample location.





Note:
 HY indicates the single year for which historical data was included for a sample location.
 HYR: indicates the year range for which historical data were included for a sample location.





**Island Waters Fly Fishers
2025 Monitoring Sites**

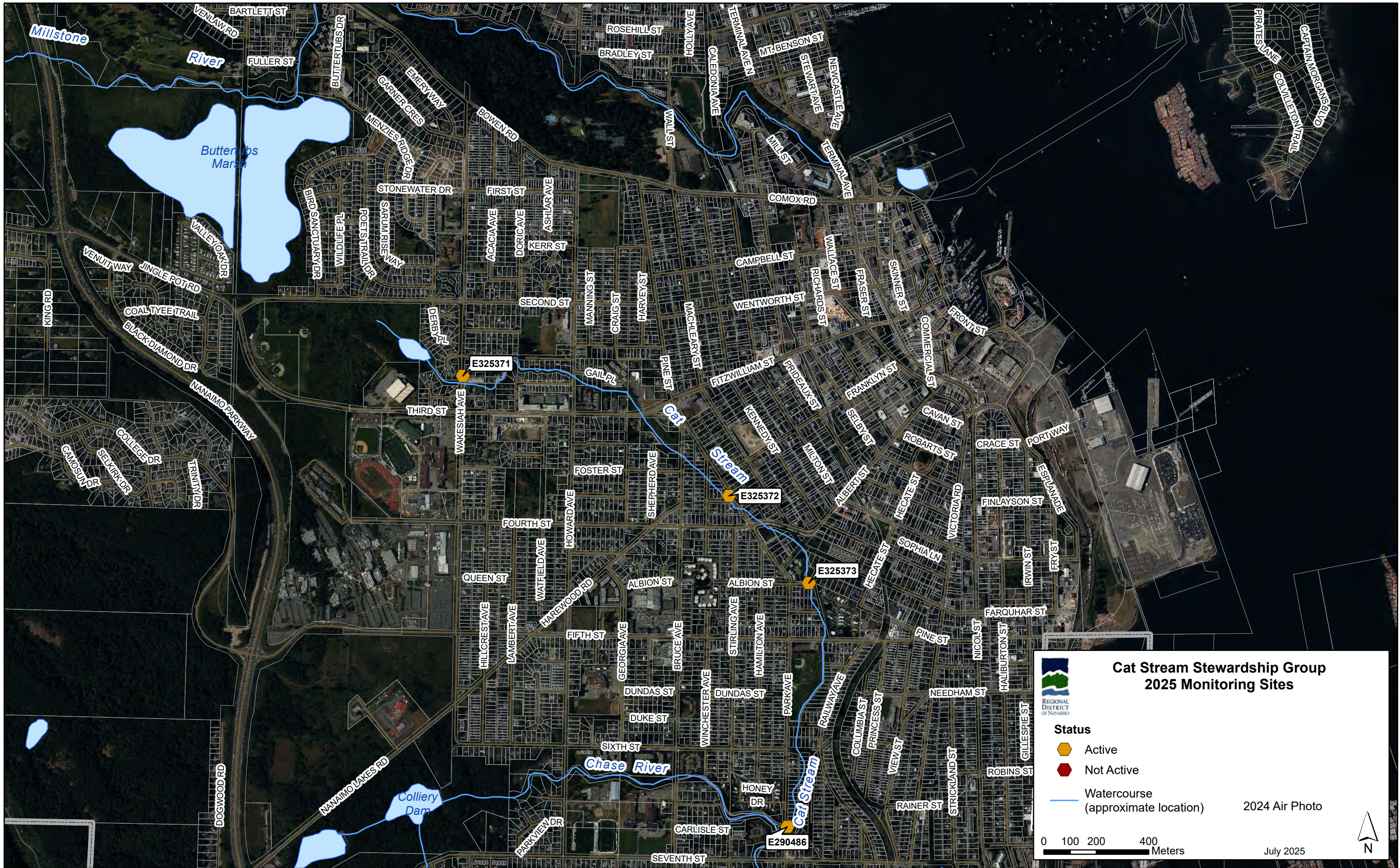
REGIONAL DISTRICT OF NANAIMO

Status	Community Park
Active	Regional Park
Not Active	
Watercourse (approximate location)	2024 Air Photo

0 250 500 1,000 Meters

July 2025

N



Millstone River

Butterflies Marsh

Chase River

Colliery Dam

Cat Stream

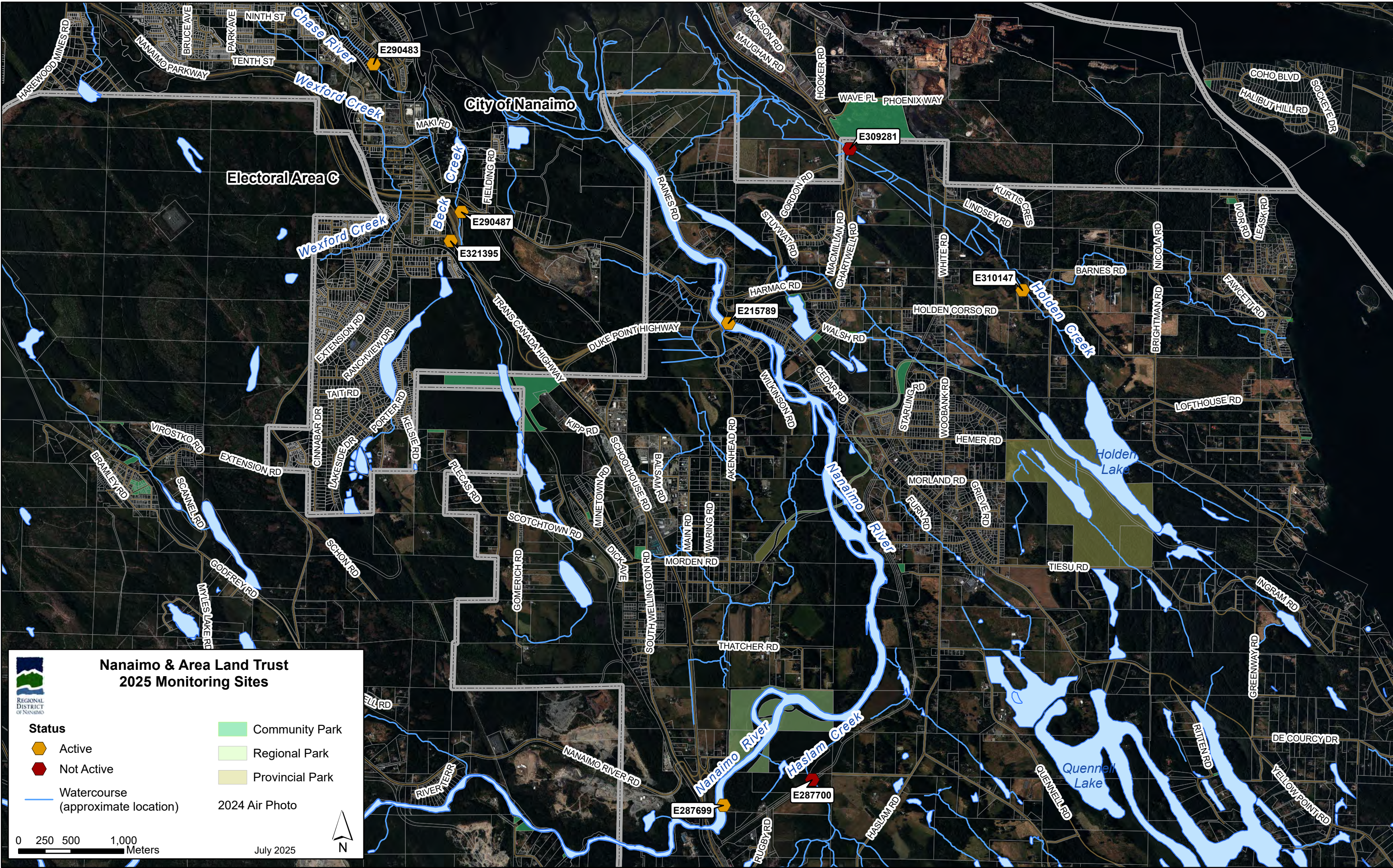
E325371

E325372

E325373

E290486

VENUWAY, BARTLETT ST, FULLER ST, BUTTERTUBS DR, EMERYWAY, GARNER CRES, MENZIES RIDGE DR, BOWEN RD, ROSEHILL ST, BRADLEY ST, HOLLY AVE, TERMINAL AVE, MT. BENSON ST, STEWART AVE, NEWCASTLE AVE, TERMINAL AVE, CALLEDONIA AVE, MILL ST, COMOX RD, WALL ST, WENTWORTH ST, CAMPBELL ST, WALLACE ST, RICHARDS ST, FRASER ST, SKINNER ST, FRONT ST, COMMERCIAL ST, KING RD, VENUTWAY, JINGLE POT RD, VALLEY OAK DR, BIRD SANCTUARY DR, WILDLIFE PL, POST STRAIT DR, SARUM RISE WAY, ACACIA AVE, DORIC AVE, KERR ST, MANNING ST, CRAIG ST, HARVEY ST, MACHLEARY ST, WENTWORTH ST, CAMPBELL ST, WALLACE ST, RICHARDS ST, FRASER ST, SKINNER ST, FRONT ST, COMMERCIAL ST, COAL TYEE TRAIL, BLACK DIAMOND DR, NANAIMO PARKWAY, DERBY PL, GAIL PL, FITZ WILLIAM ST, PRIDEANX ST, FRANKLYN ST, CAVAN ST, CRACE ST, PORTWAY, COLLEGE DR, TRINITY DR, CANOSUN DR, SELKIRK DR, WAKESIAH AVE, WENTWORTH ST, CAMPBELL ST, WALLACE ST, RICHARDS ST, FRASER ST, SKINNER ST, FRONT ST, COMMERCIAL ST, FINLAYSON ST, ESPLANADE, IRWIN ST, FRY ST, HOWARD AVE, SHEPHERD AVE, FOSTER ST, KENNEDY ST, MILTON ST, ALBERT ST, HECAETE ST, SOPHIA LN, VICTORIA RD, FINLAYSON ST, ESPLANADE, IRWIN ST, FRY ST, FORTH ST, WATFIELD AVE, HAREWOOD RD, ALBION ST, ALBION ST, STIRLING AVE, HAMILTON AVE, PARK AVE, RAILWAY AVE, HECAETE ST, SOPHIA LN, VICTORIA RD, FINLAYSON ST, ESPLANADE, IRWIN ST, FRY ST, QUEEN ST, HILLCREST AVE, LAMBERT AVE, FIFTH ST, GEORGIA AVE, BRUCE AVE, STIRLING AVE, HAMILTON AVE, PARK AVE, RAILWAY AVE, HECAETE ST, SOPHIA LN, VICTORIA RD, FINLAYSON ST, ESPLANADE, IRWIN ST, FRY ST, DUNDAS ST, DUKE ST, WINCHESTER AVE, DUNDAS ST, HAMILTON AVE, PARK AVE, RAILWAY AVE, HECAETE ST, SOPHIA LN, VICTORIA RD, FINLAYSON ST, ESPLANADE, IRWIN ST, FRY ST, SIXTH ST, HONEY DR, CARLISLE ST, PARKVIEW DR, SEVENTH ST, COLUMBIA ST, PRINCESS ST, VIEW ST, NEEDHAM ST, HALIBURTON ST, GILLESPIE ST, ROBINS ST, RAINIER ST, STRICKLAND ST, DOGWOOD RD, NANAIMO LAKES RD, PARKVIEW DR, SEVENTH ST, COLUMBIA ST, PRINCESS ST, VIEW ST, NEEDHAM ST, HALIBURTON ST, GILLESPIE ST, ROBINS ST, RAINIER ST, STRICKLAND ST, PIRATES LANE, COLVILLE TRAIL, CAPTAIN MORGAN BLVD



**Nanaimo & Area Land Trust
2025 Monitoring Sites**

REGIONAL DISTRICT OF NANAIMO

Status	Community Park
Active	Regional Park
Not Active	Provincial Park
Watercourse (approximate location)	2024 Air Photo

0 250 500 1,000
Meters

July 2025

N