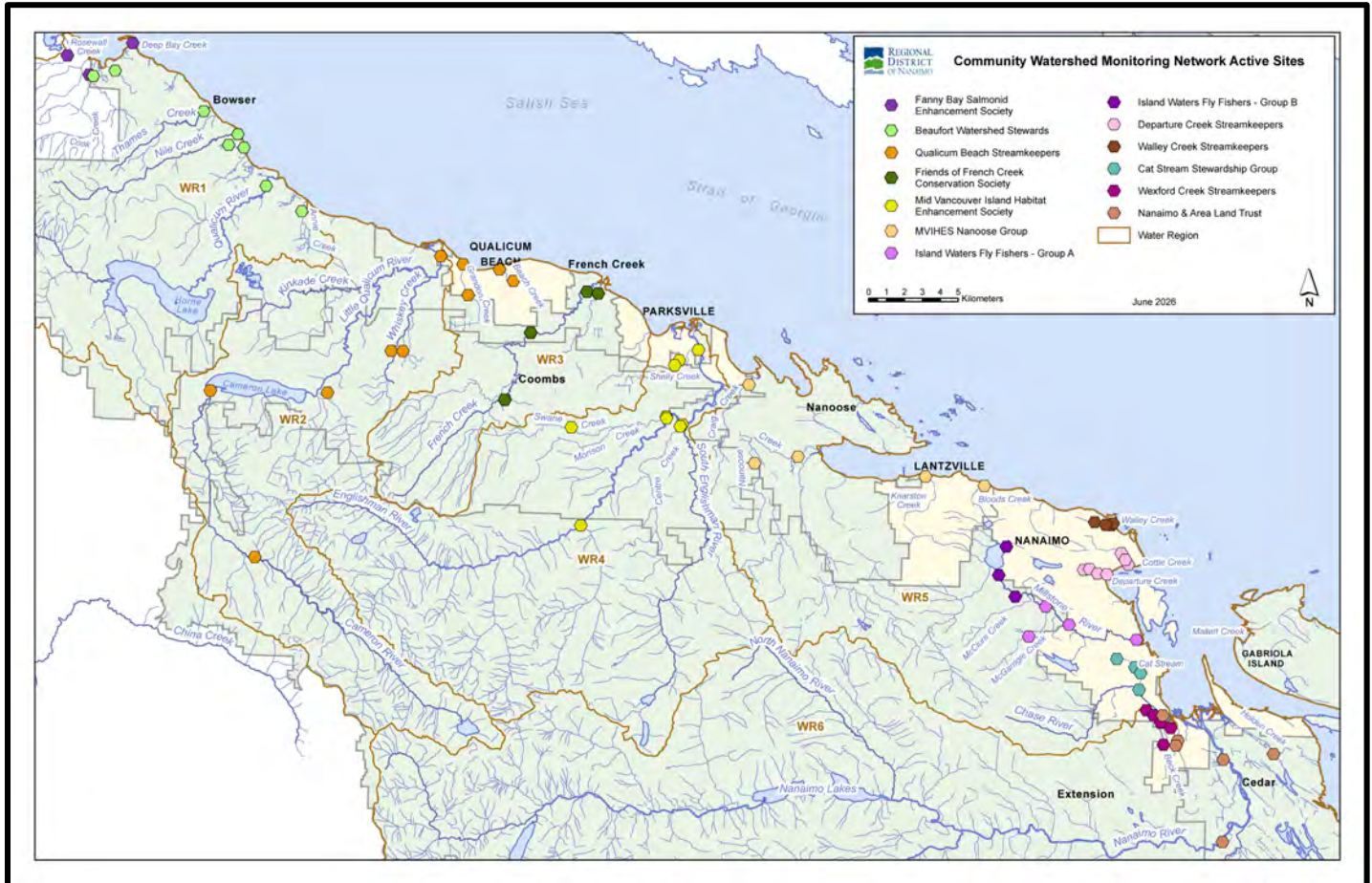


Community Watershed Monitoring Network 2025 Results by Water Region



Included in Water Region (WR) 5-1 package:

1. CWMN WR5 sample sites
2. How to interpret a box plot
3. Box Plot Comparison – 2025 data to previous years: *displayed by parameter (Turbidity, Dissolved Oxygen, Temperature, Conductivity) & sample period (summer, fall)*
4. Mid Vancouver Island Habitat Enhancement Society (MVIHES) group map
5. Walley Creek Streamkeepers (WCS) map
6. Departure Creek Streamkeepers (DCS) map



Water Region 5-1
Sampled by:

Mid Vancouver Island Habitat Enhancement Society (MVIHES)
&
Walley Creek Streamkeepers (WCS)
&
Departure Creek Streamkeepers (DCS)



WR5-1 CWMN Sample Sites:

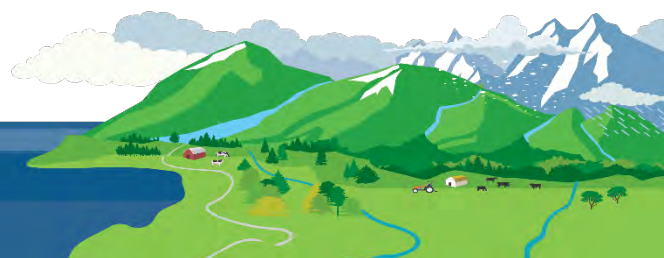
The table below shows the sites monitored by each of the streamkeeper organizations, as well as the number of years and which years a site was sampled. The number of years is important to keep in mind when interpreting the box plots as the plot for each site may contain a slightly different temporal range.

Group	EMS ID	Geographic Description	Total Years Sampled	Years Sampled
MVIHES	E294010	Bloods Creek just u/s Dickenson Rd	8.5	2017 - present*
MVIHES	E294013	Knarston Ck just u/s Lantzville Rd	8.5	2017 - present*
MVIHES	E294017	Craig Creek just u/s Northwest Bay Rd	9	2014 - present~
MVIHES	E294019	Nanoose Creek @ Nanoose Campground	9	2014 - present~
MVIHES	E294020	Nanoose Creek @ Matthew Crossing	9	2014 - present~
DCS	E290469	Departure Ck @ Neyland Rd (Stn1)	14	2012 - present
DCS	E290470	Joseph's Creek (trib to Departure Ck) off Newton St (Stn 2)*	14	2012 - present
DCS	E290471	Departure Ck at lower end of Woodstream Park (Stn 3)	14	2012 - present
DCS	E290472	Departure Ck @ outlet (Stn 4)	14	2012 - present
DCS	E290473	Cottle Creek @ Nottingham	14	2012 - present
DCS	E309186	Cottle Creek d/s of Hammond Bay Road	9	2017 - present
DCS	E290475	Cottle Creek @ Stephenson Pt Rd	14	2012 - present
WCS	E306256	Walley Ck d/s Hammond Bay	10	2016 - present
WCS	E306257	Walley Ck @ Morningside Dr	10	2016 - present
WCS	E306434	Walley Creek 20m u/s beach	10	2016 - present
WCS	E318233	Walley Ck 100 m d/s McGuffie Rd	6	2019 - present^

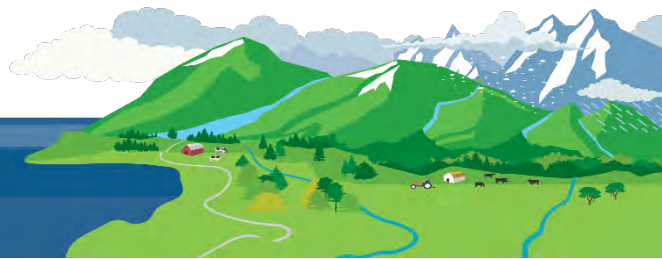
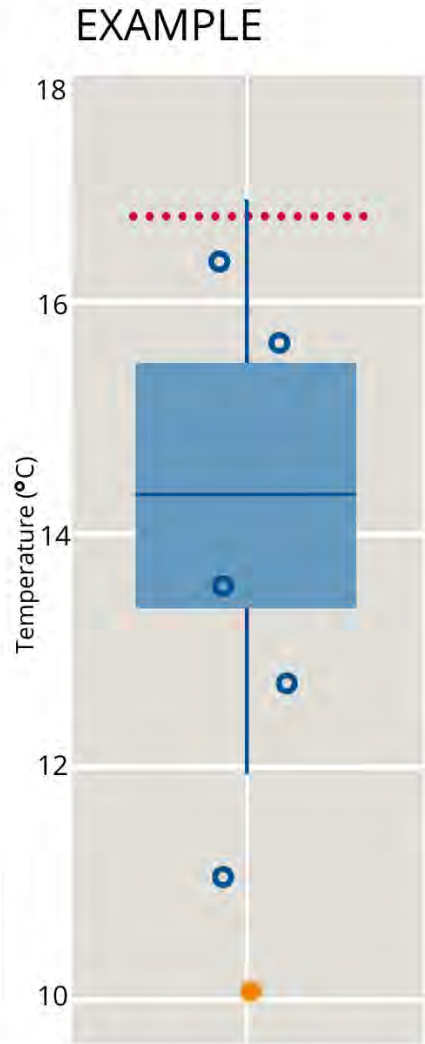
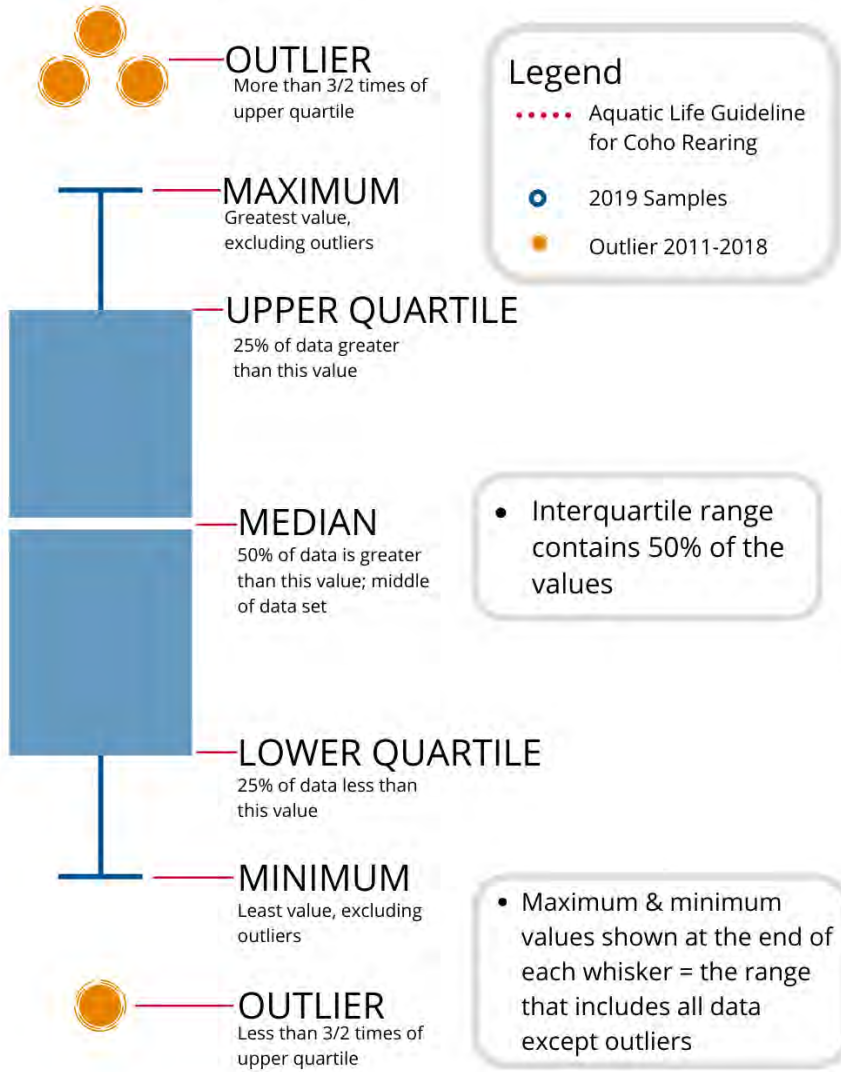
*WR 1 notes for number of years sampled: *Sampled in fall period only*

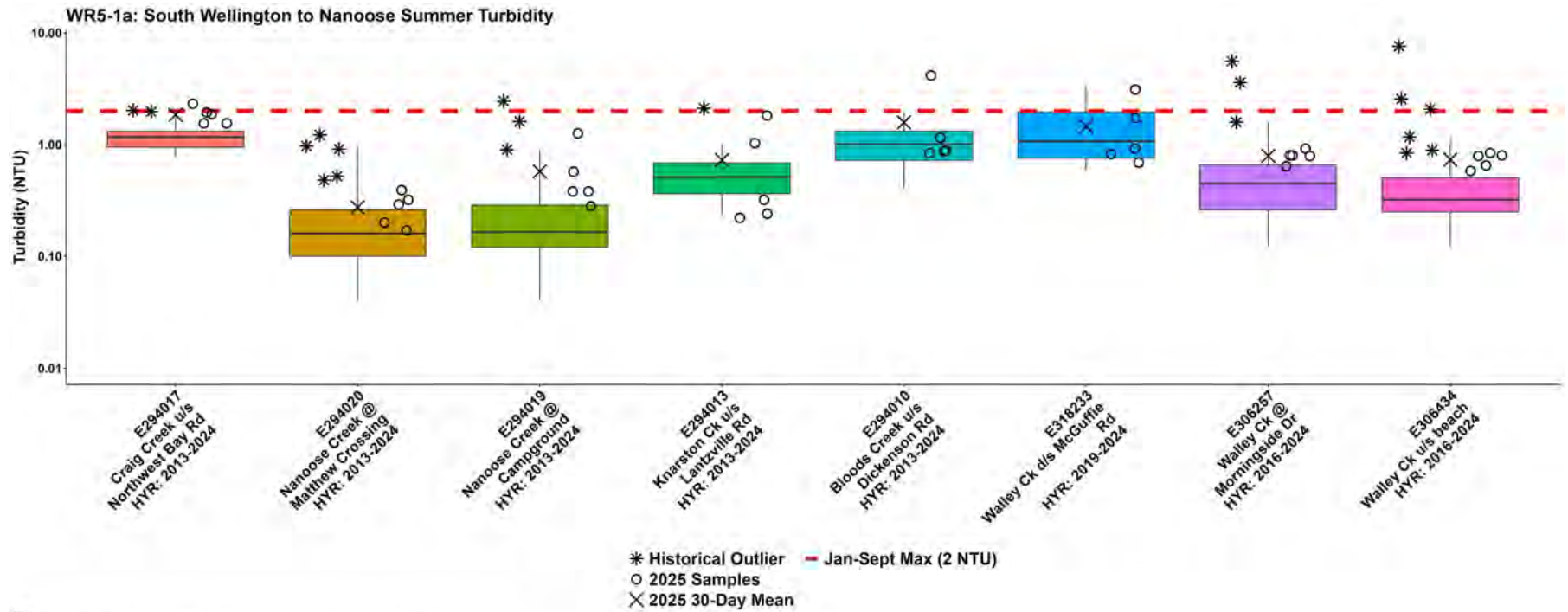
~ 2020 and 2021 not sampled

^Not sampled in 2020 due to construction

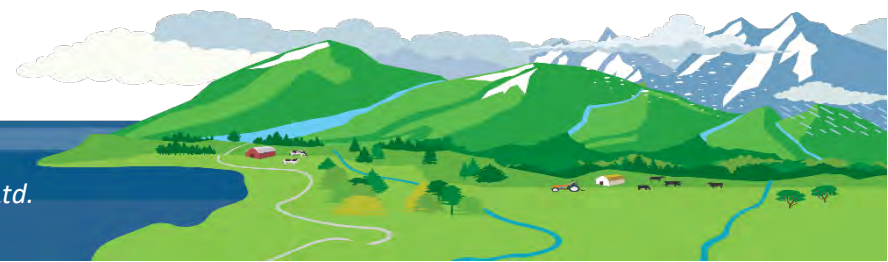


How to Interpret a Box Plot:

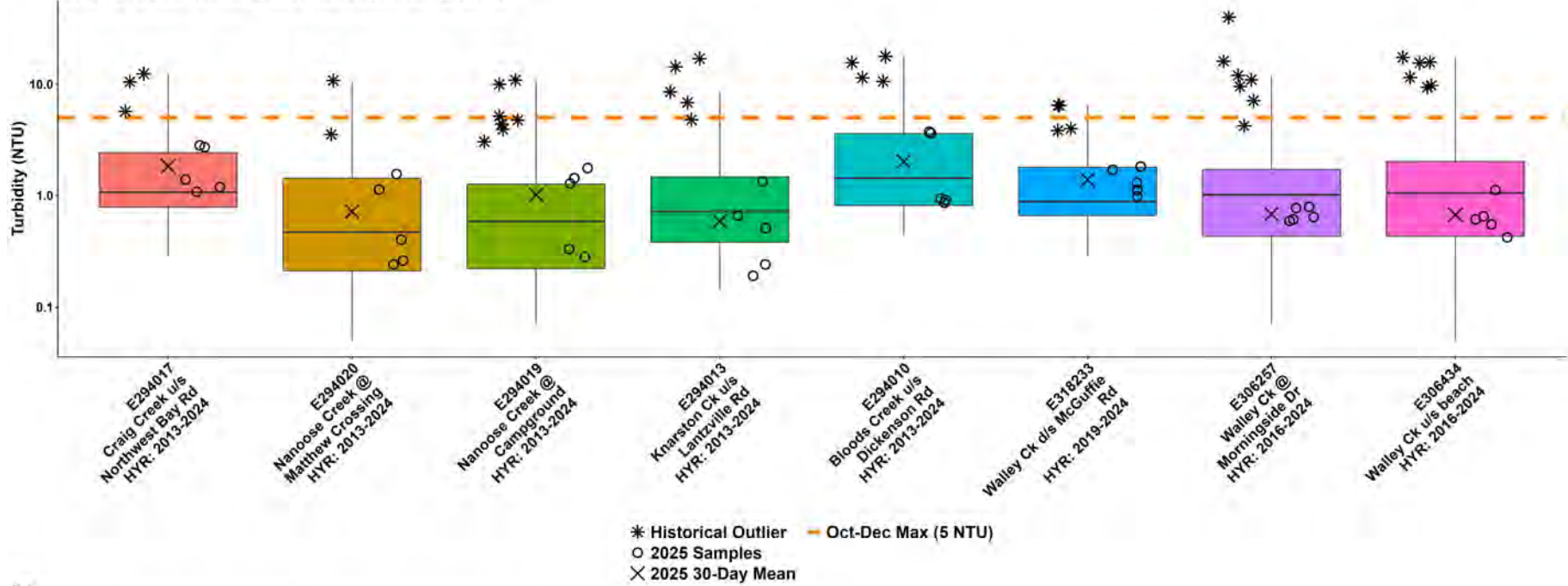




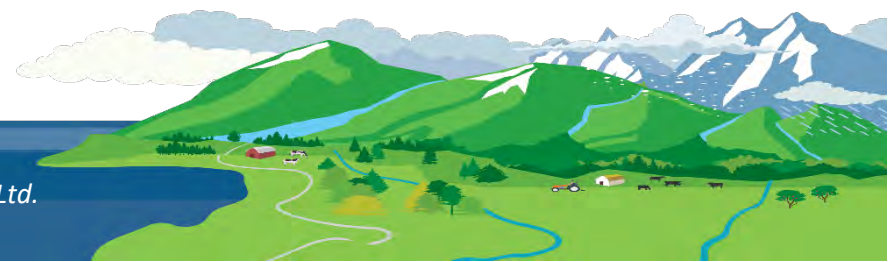
Note:
HYR: indicates the year range for which historical data were included for a sample location.



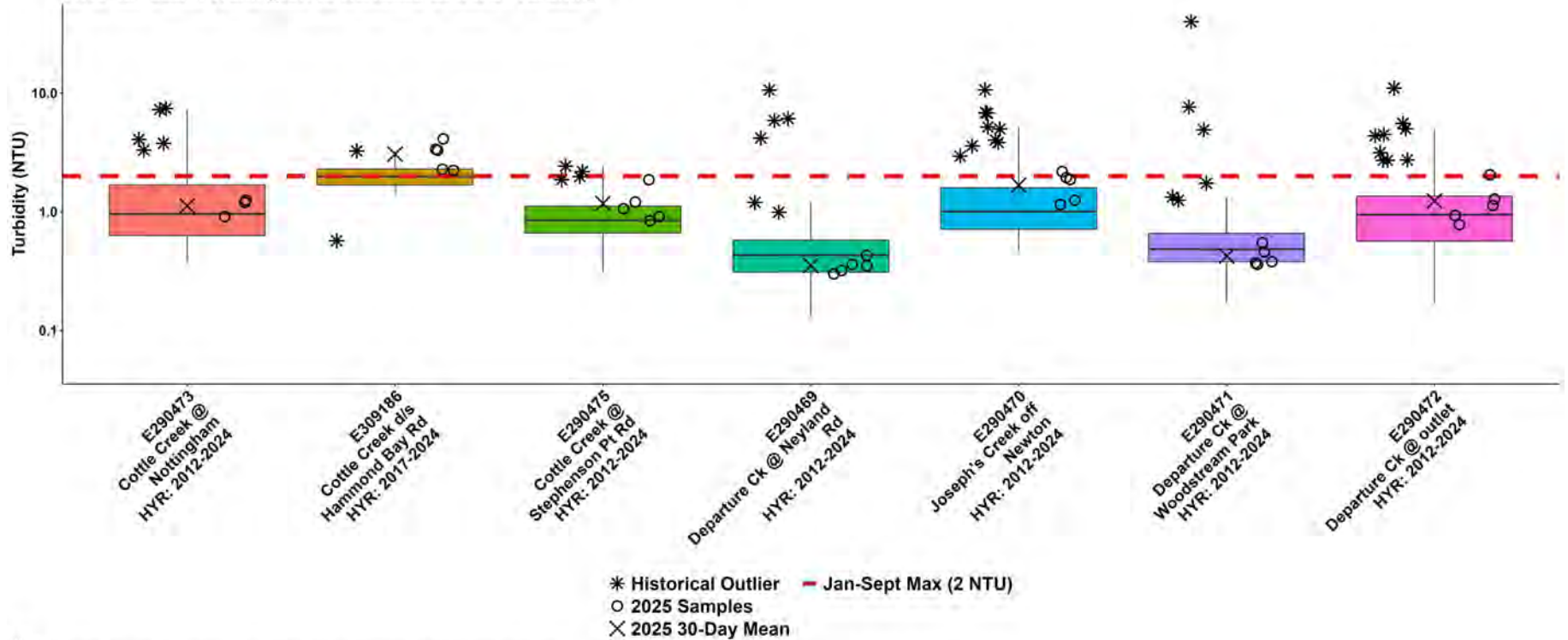
WR5-1a: South Wellington to Nanoose Fall Turbidity



Note:
HYR: indicates the year range for which historical data were included for a sample location.



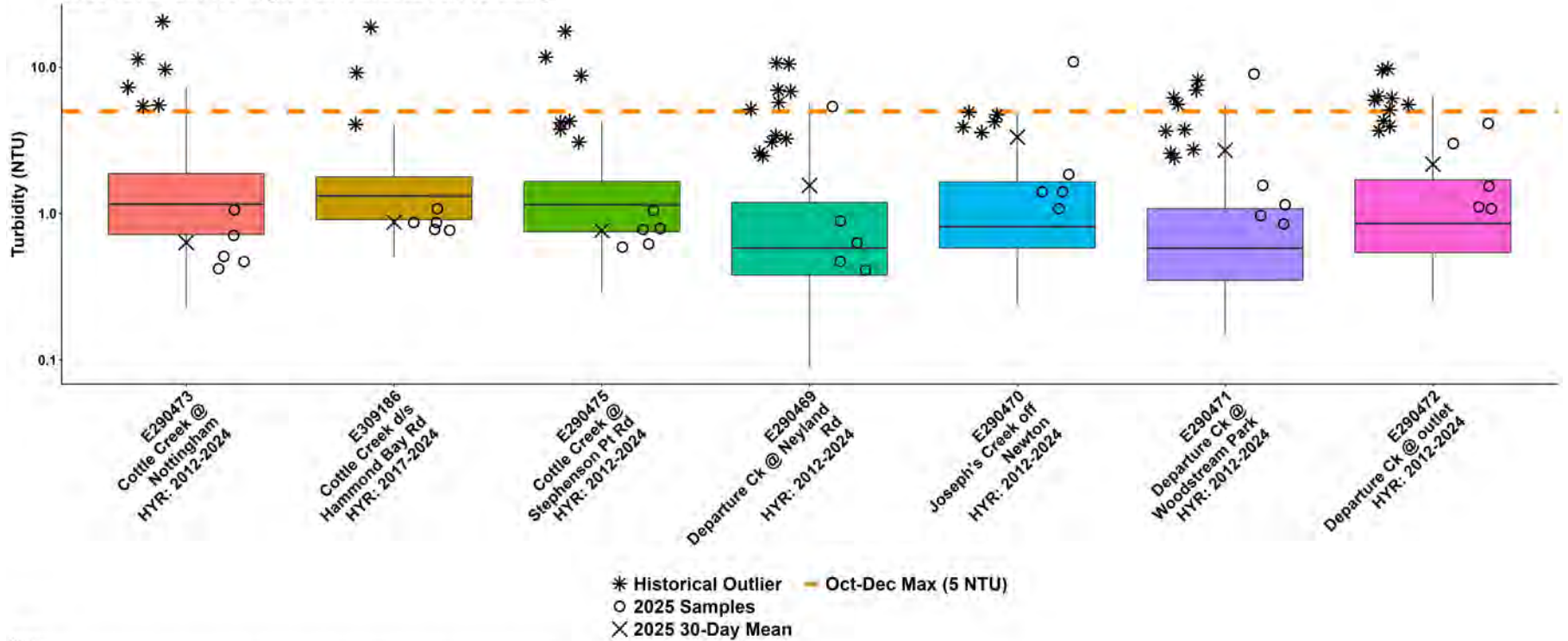
WR5-1b: South Wellington to Nanoose Summer Turbidity



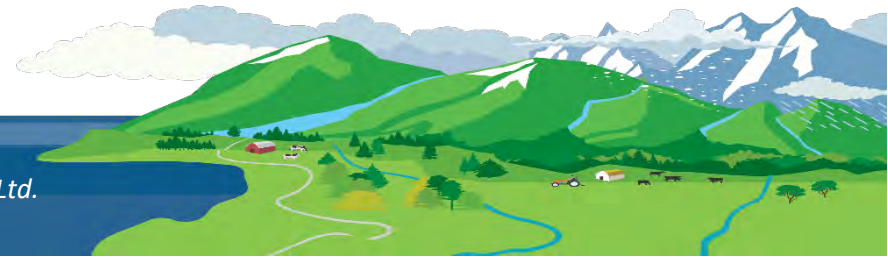
Note:
HYR: indicates the year range for which historical data were included for a sample location.

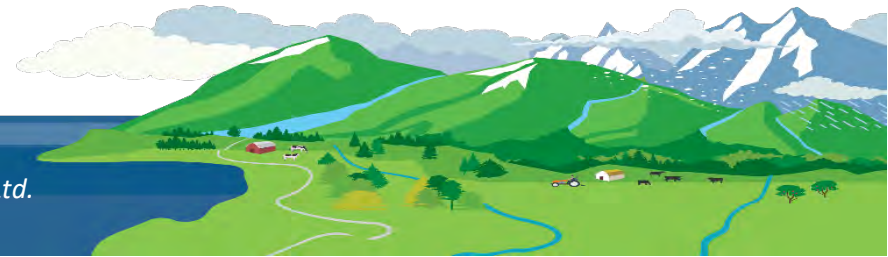
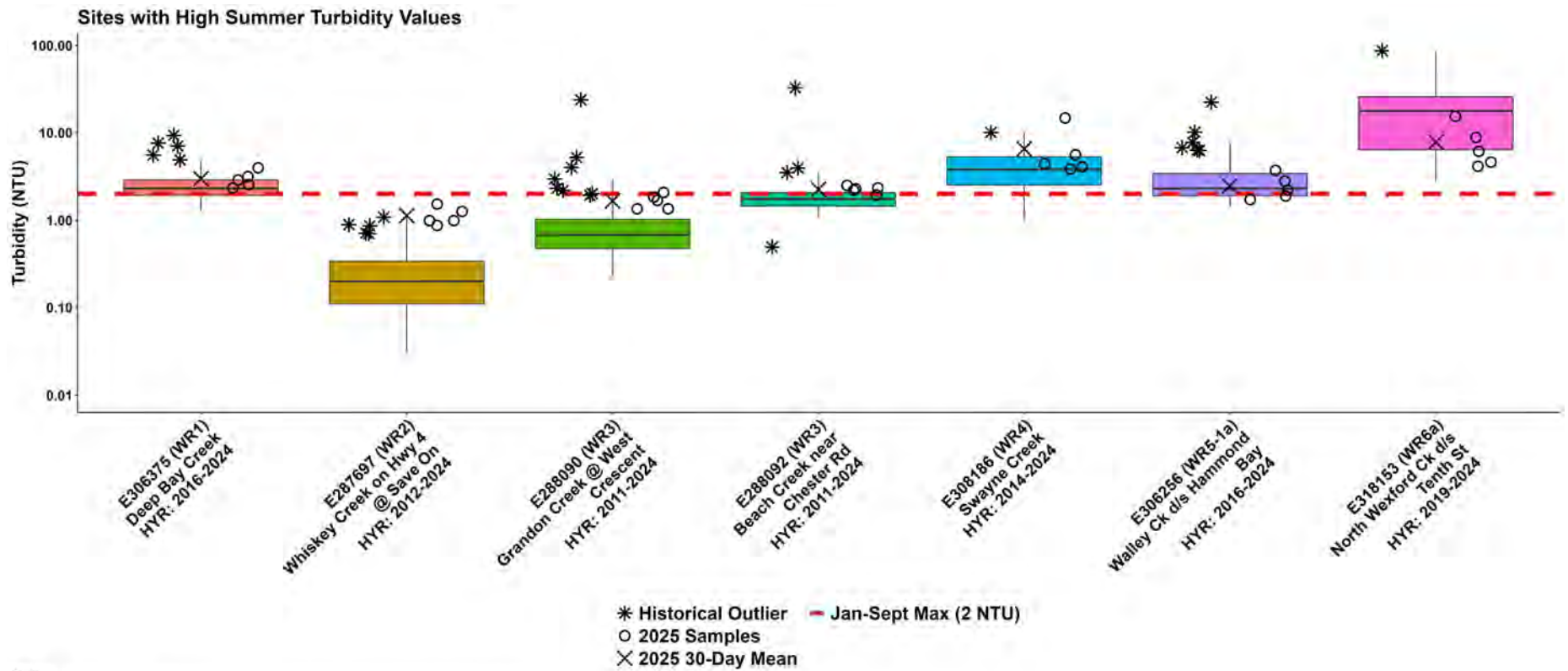


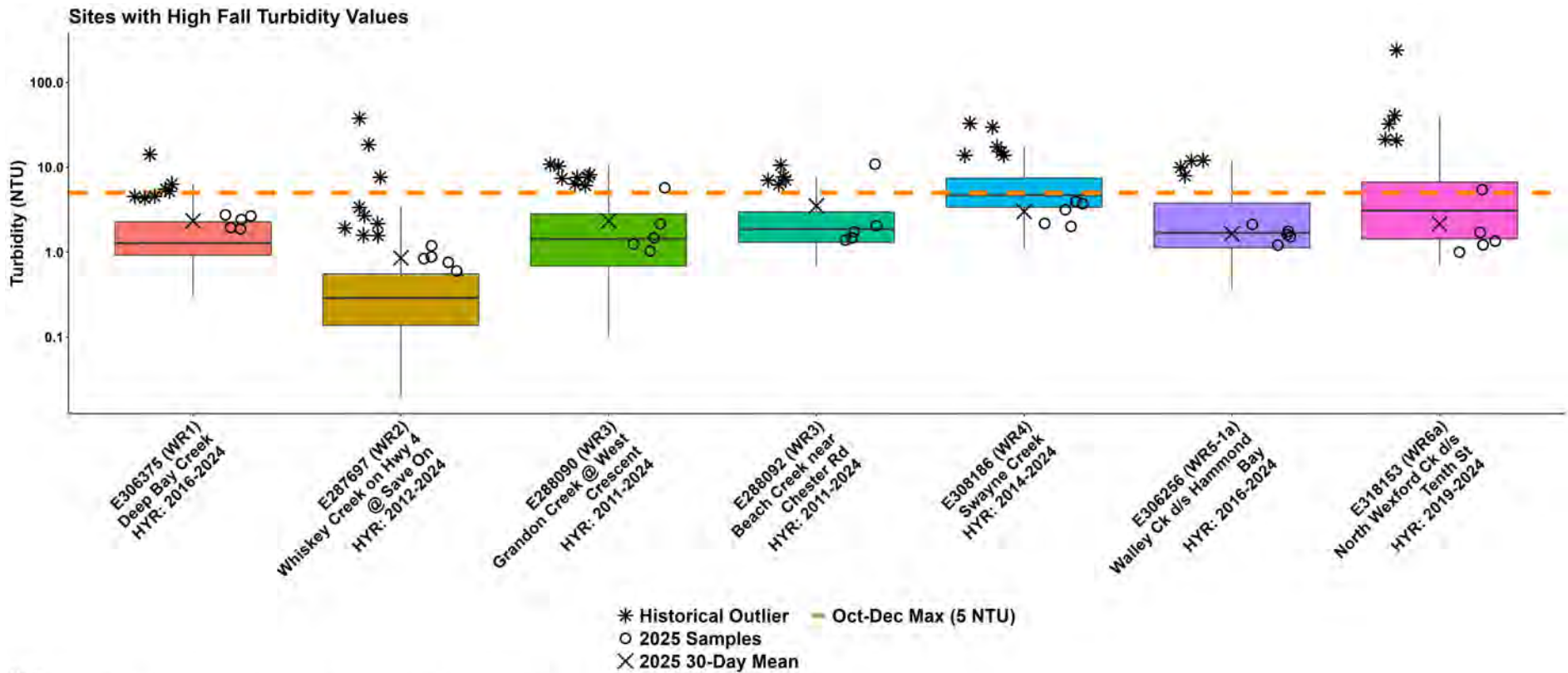
WR5-1b: South Wellington to Nanoose Fall Turbidity



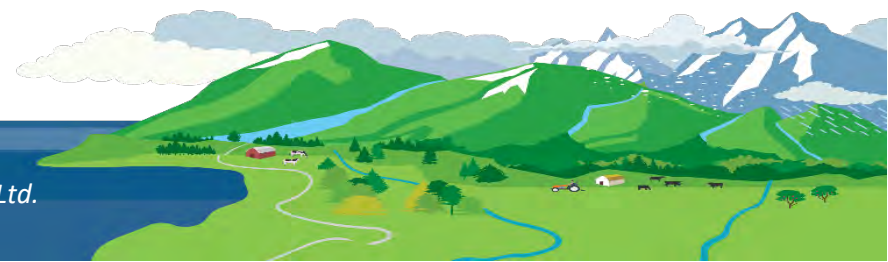
Note:
HYR: indicates the year range for which historical data were included for a sample location.



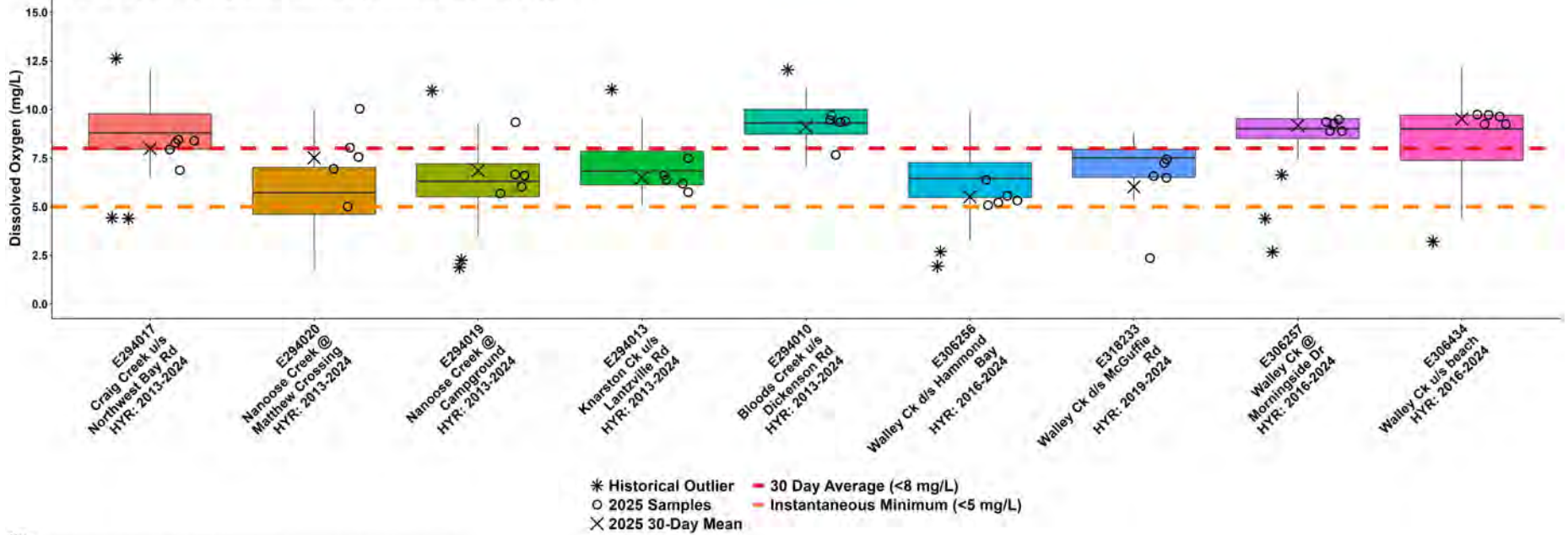




Note:
HYR: Indicates the year range for which historical data were included for a sample location.



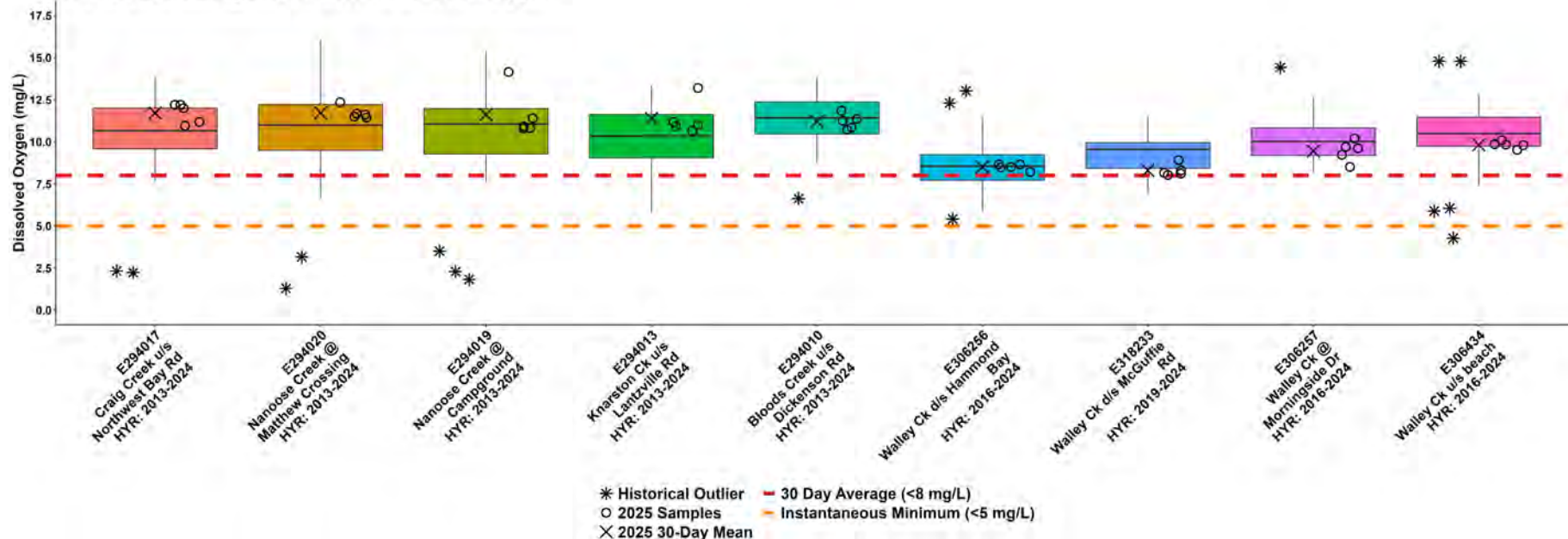
WR5-1a: South Wellington to Nanoose Summer Dissolved Oxygen



Note:
HYR: indicates the year range for which historical data were included for a sample location.



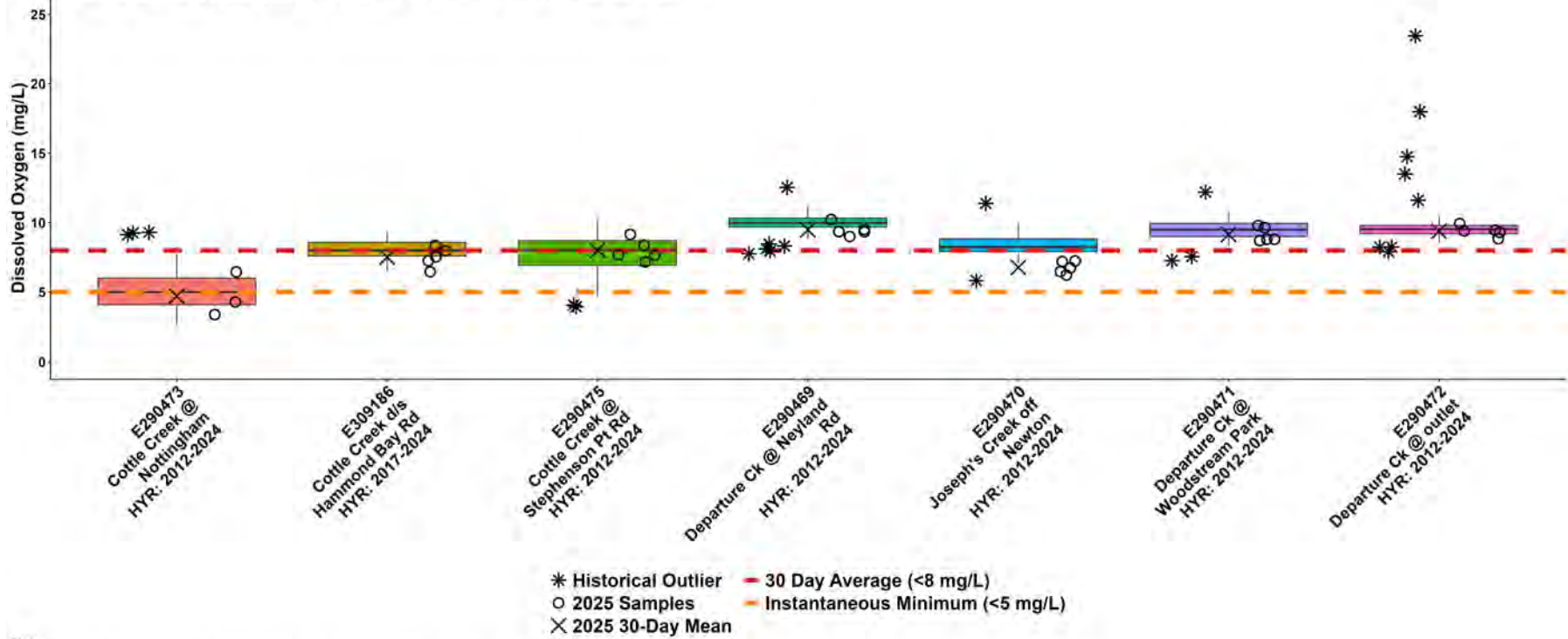
WR5-1a: South Wellington to Nanoose Fall Dissolved Oxygen



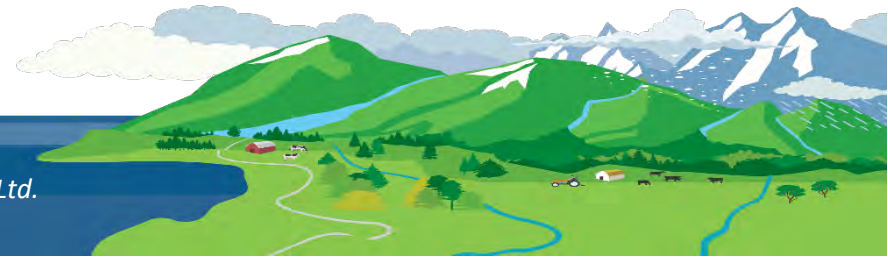
Note: HYR: indicates the year range for which historical data were included for a sample location.



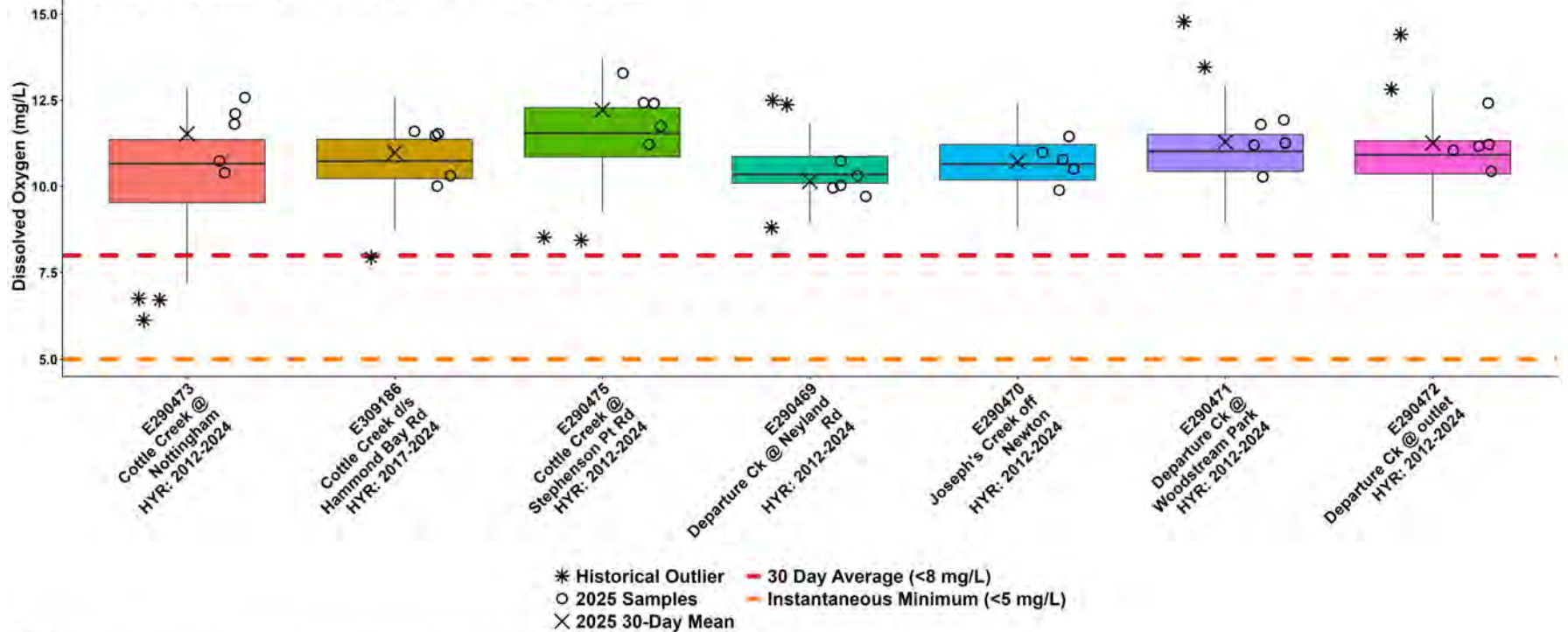
WR5-1b: South Wellington to Nanoose Summer Dissolved Oxygen



Note:
 HYR: indicates the year range for which historical data were included for a sample location.



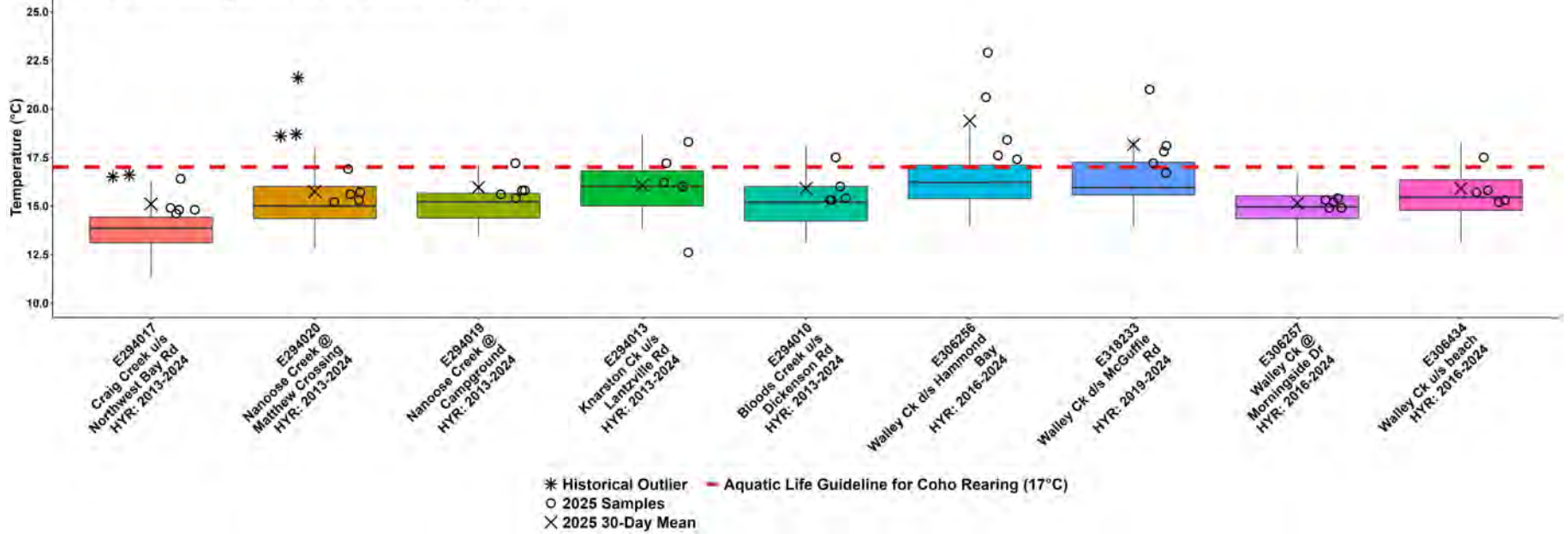
WR5-1b: South Wellington to Nanoose Fall Dissolved Oxygen



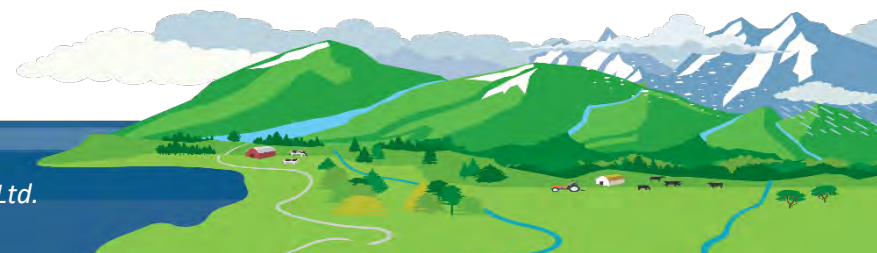
Note:
HYR: indicates the year range for which historical data were included for a sample location.



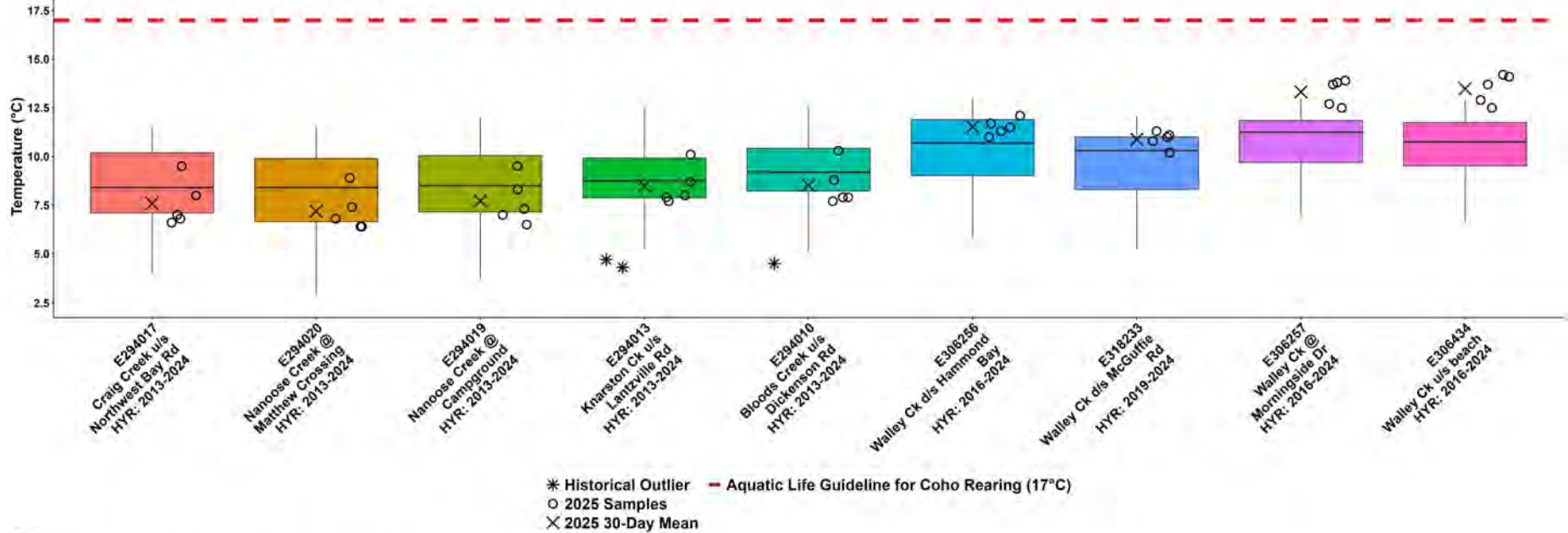
WR5-1a: South Wellington to Nanoose Summer Temperature



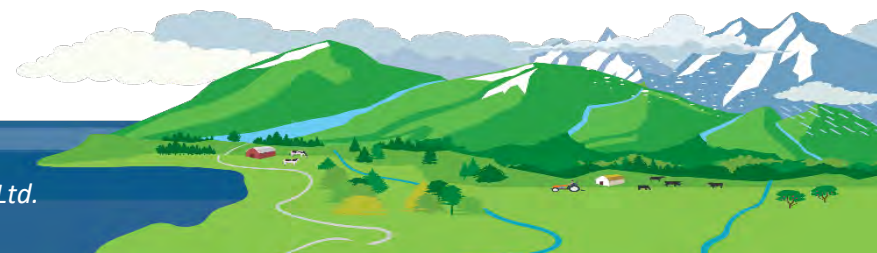
Note:
HYR: indicates the year range for which historical data were included for a sample location.

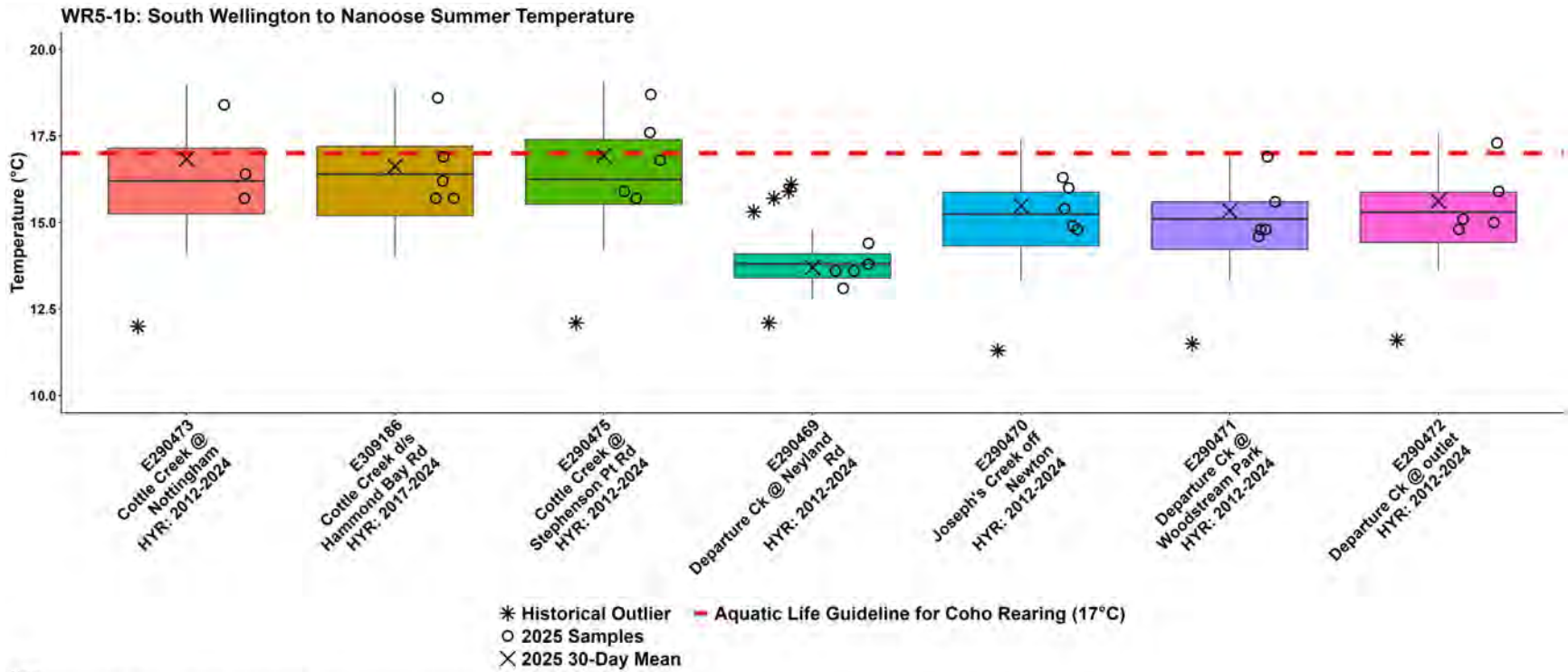


WR5-1a: South Wellington to Nanoose Fall Temperature

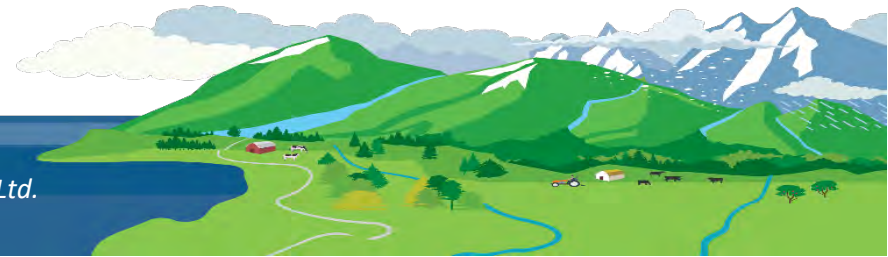


Note:
HYR: Indicates the year range for which historical data were included for a sample location.

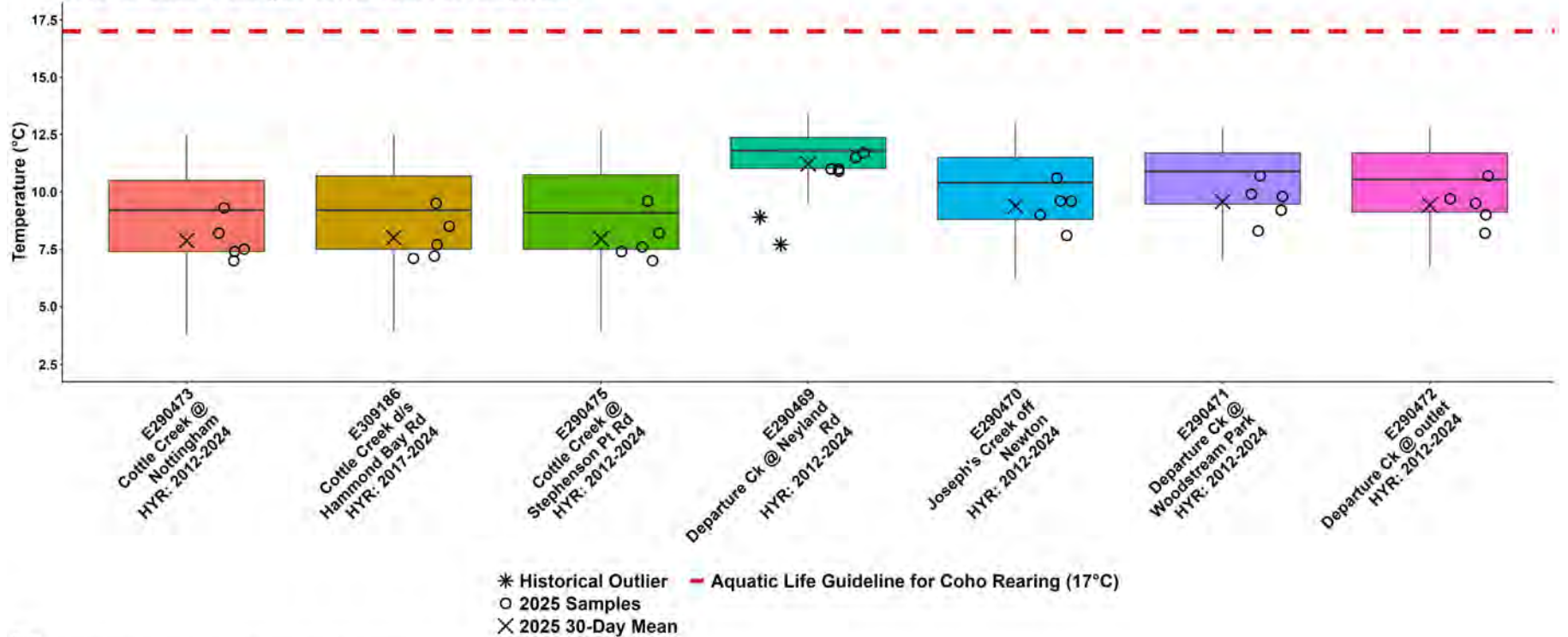




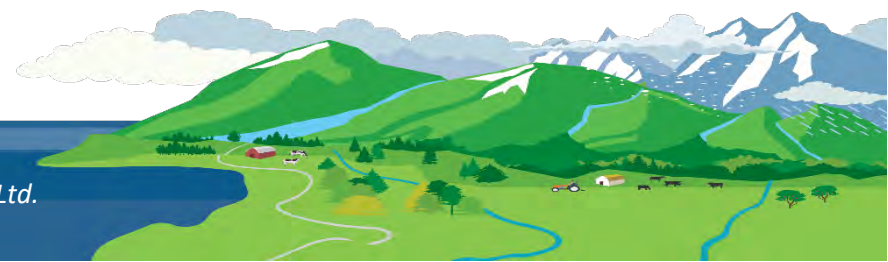
Note:
HYR: Indicates the year range for which historical data were included for a sample location.

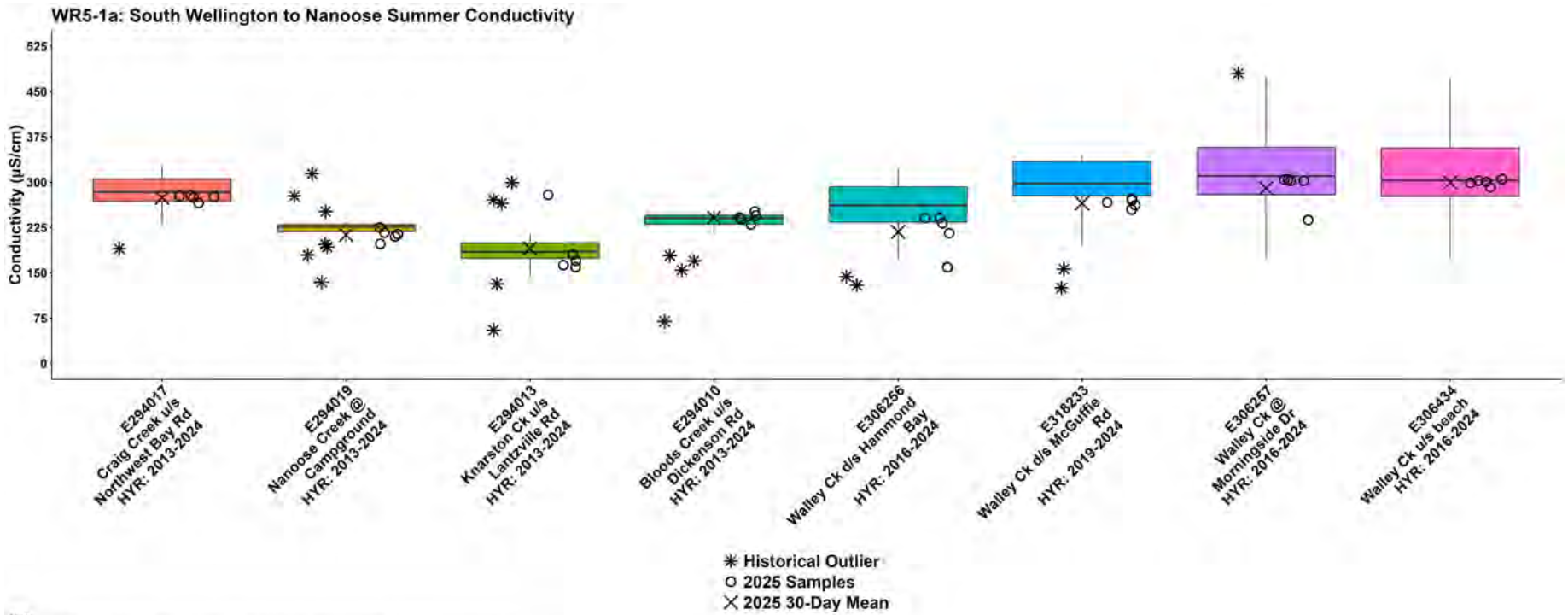


WR5-1b: South Wellington to Nanoose Fall Temperature

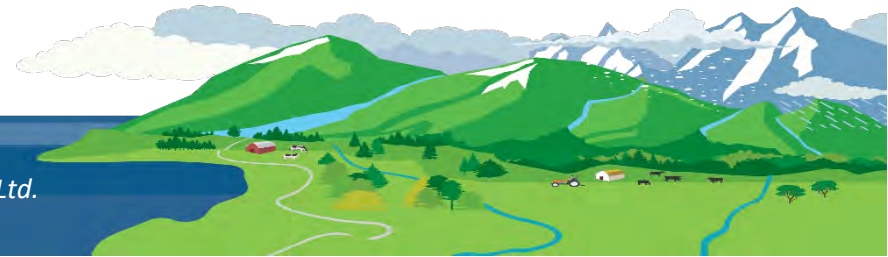


Note:
HYR: indicates the year range for which historical data were included for a sample location.

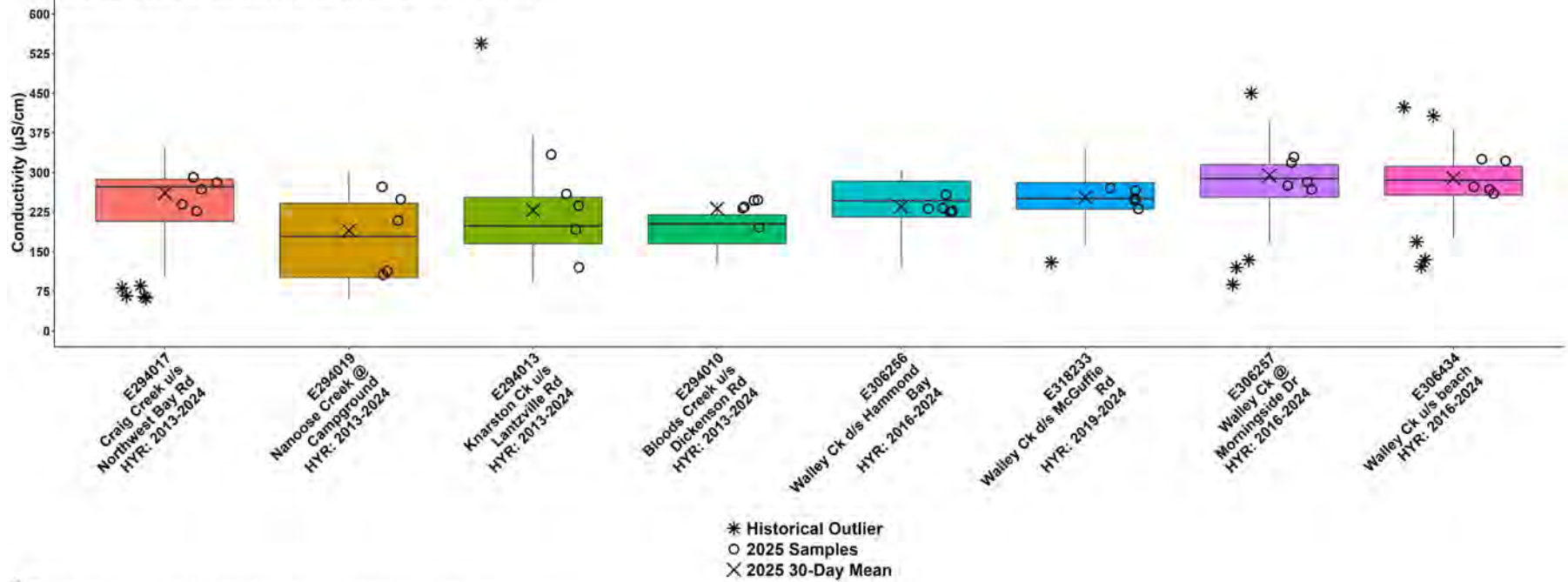




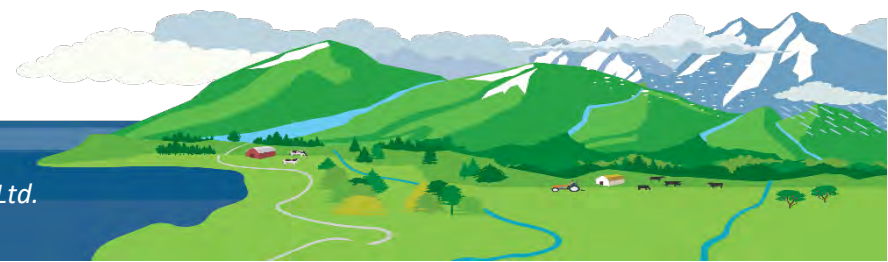
Note: HYR indicates the year range for which historical data were included for a sample location.



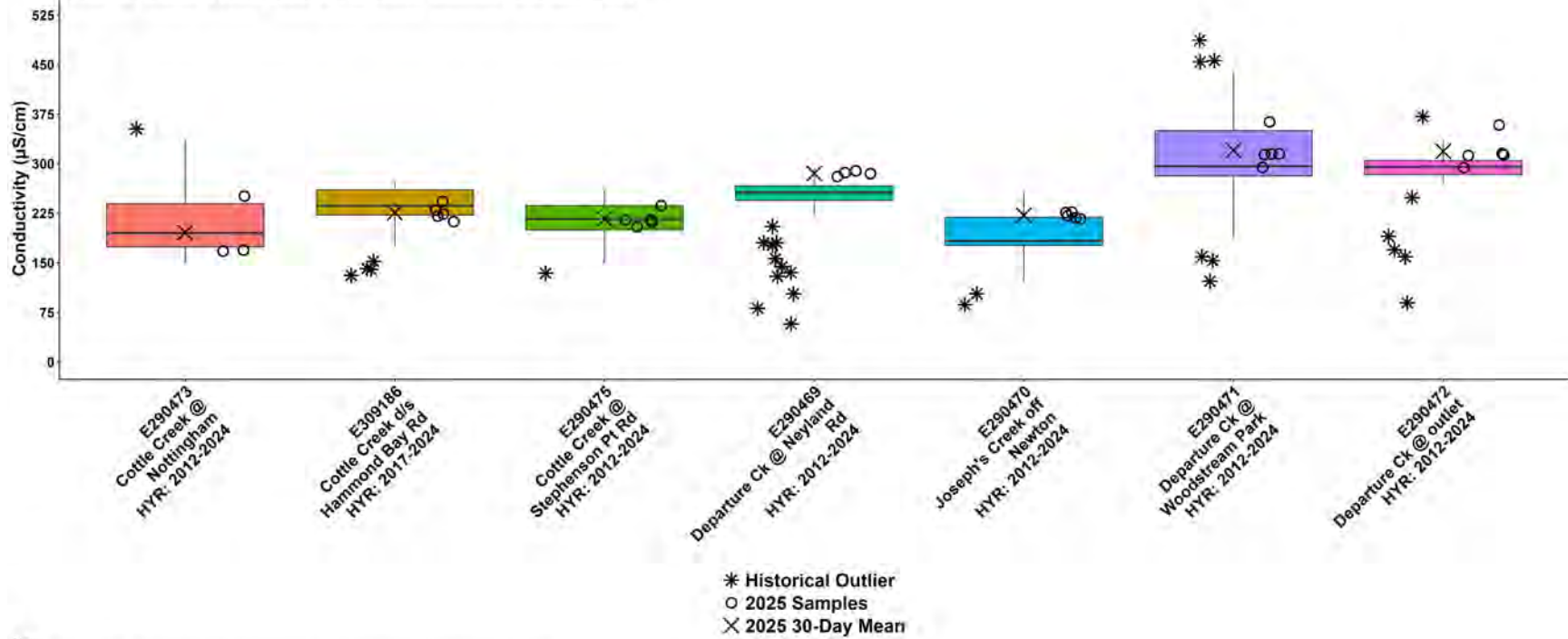
WR5-1a: South Wellington to Nanoose Fall Conductivity



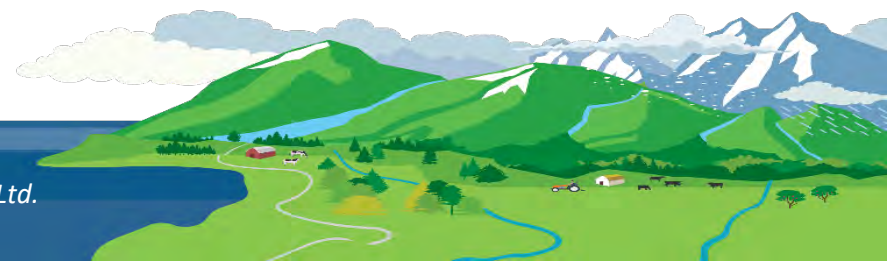
Note: HYR: indicates the year range for which historical data were included for a sample location



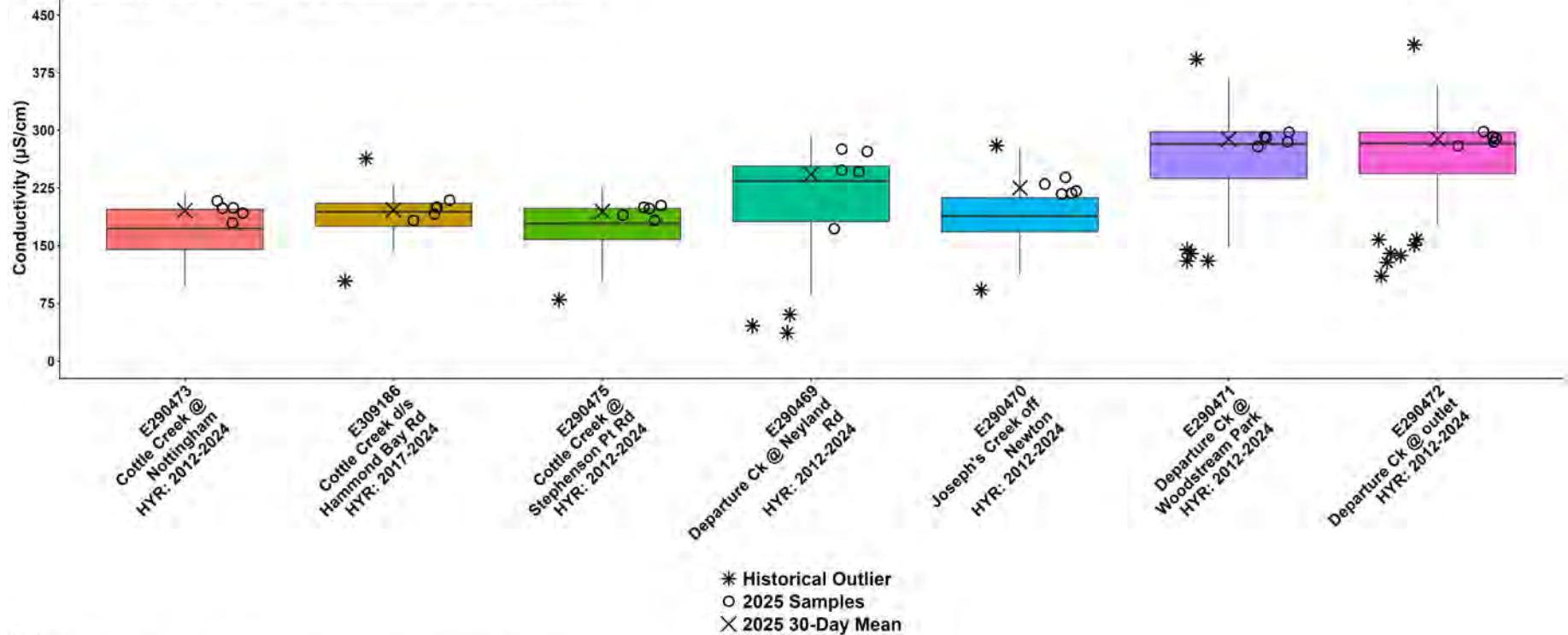
WR5-1b: South Wellington to Nanoose Summer Conductivity



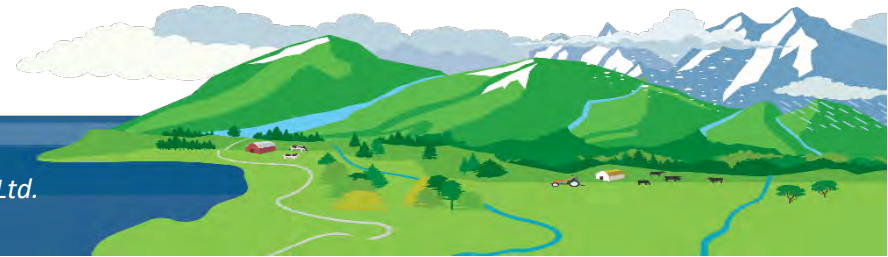
Note:
HYR: indicates the year range for which historical data were included for a sample location.

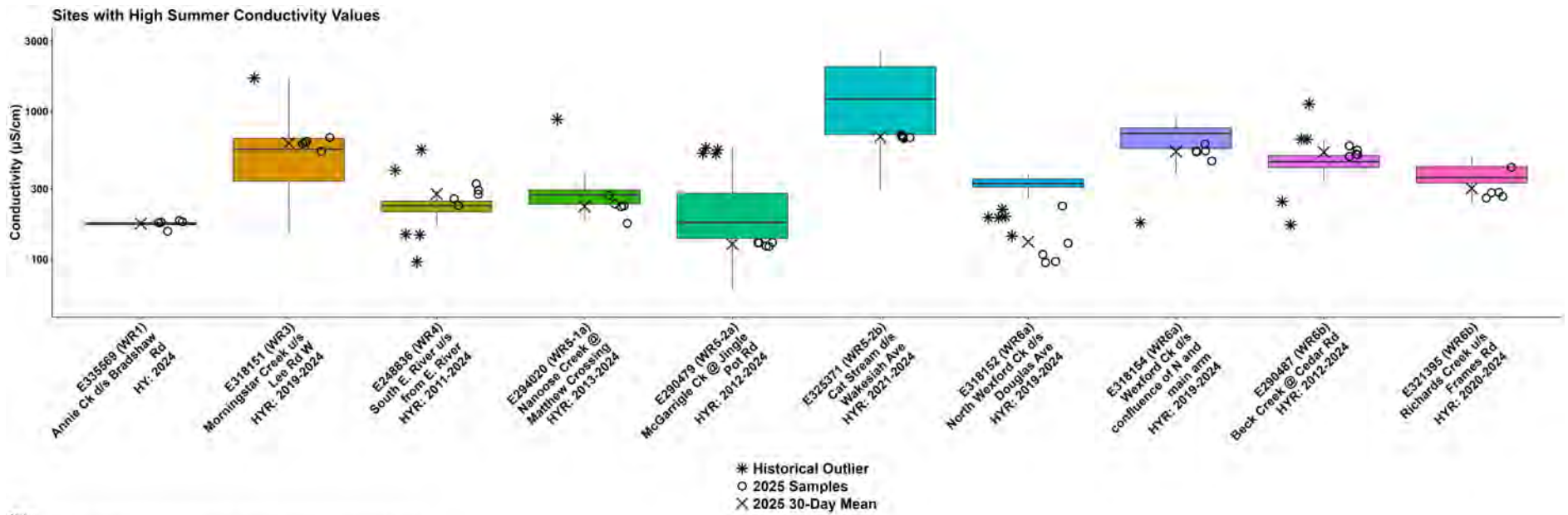


WR5-1b: South Wellington to Nanoose Fall Conductivity

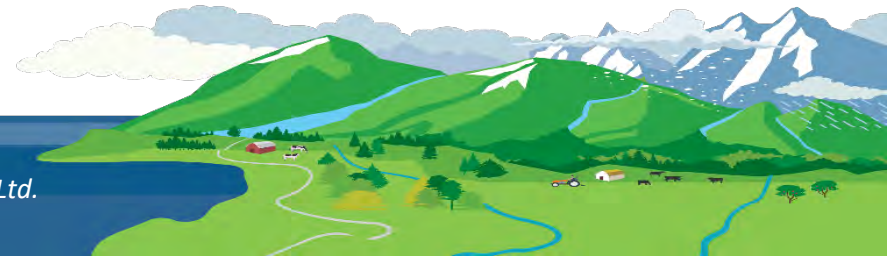


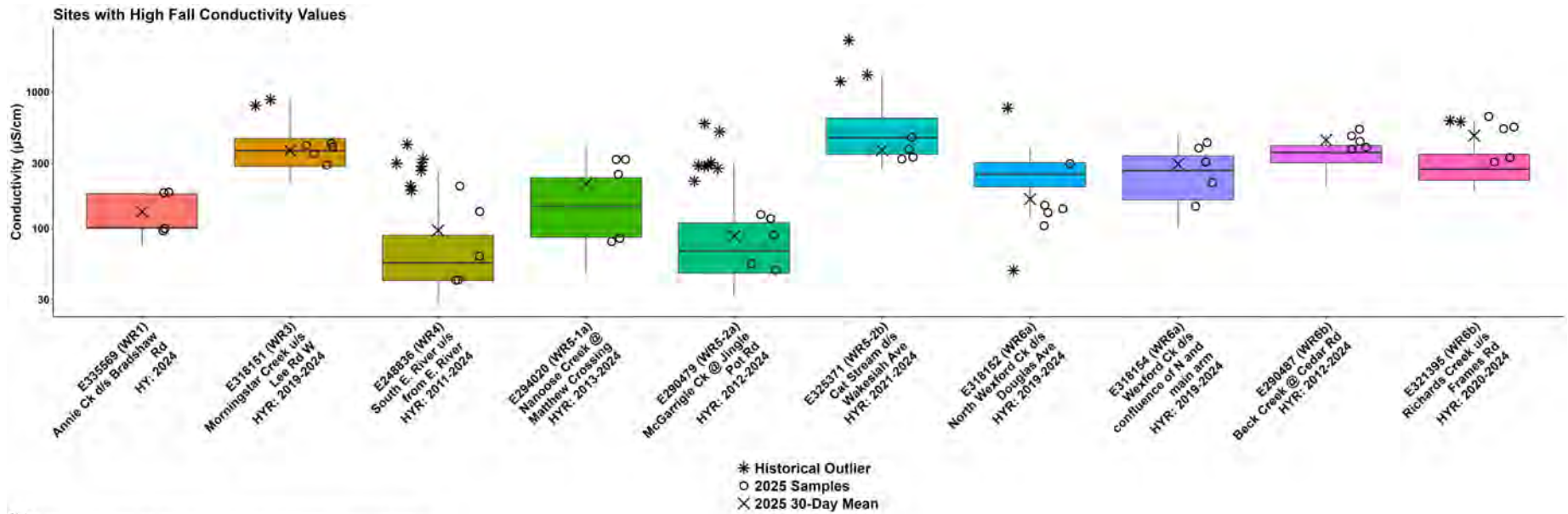
Note:
HYR: Indicates the year range for which historical data were included for a sample location.



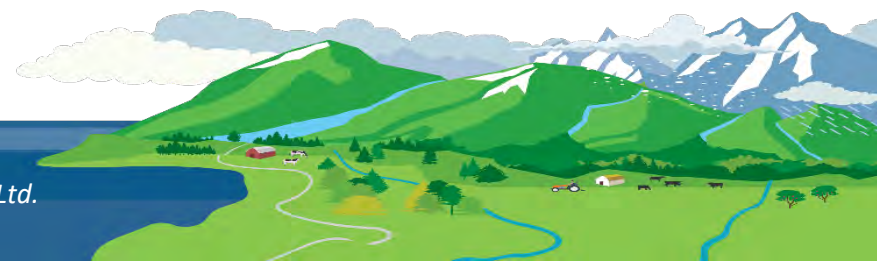


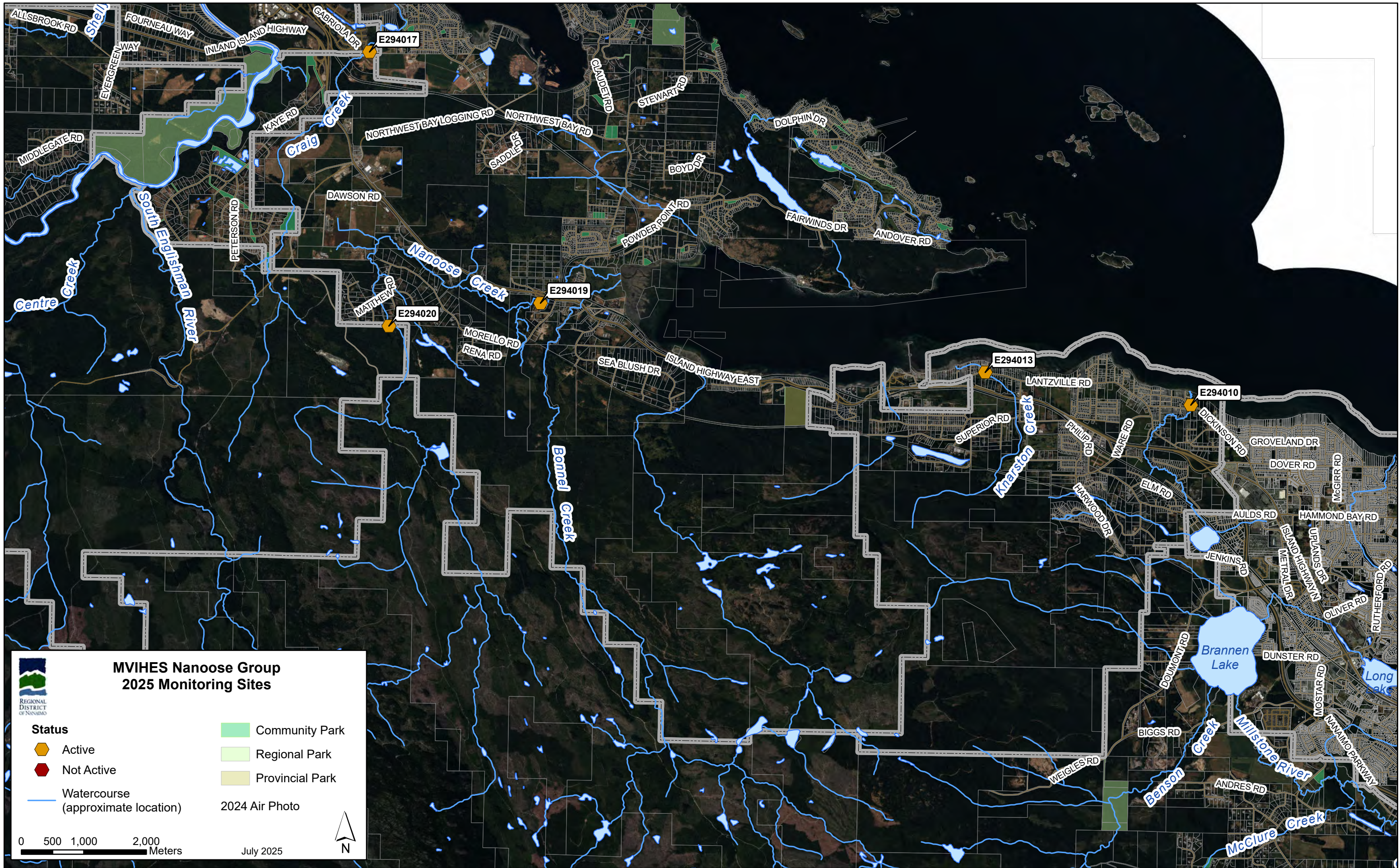
Note:
 HYR: indicates the single year for which historical data was included for a sample location.
 HYR: indicates the year range for which historical data was included for a sample location.





Note:
HY: indicates the single year for which historical data was included for a sample location.
HYR: indicates the year range for which historical data were included for a sample location.





**MVIHES Nanoose Group
2025 Monitoring Sites**

REGIONAL DISTRICT OF NANAIMO

Status	Community Park
Active	Regional Park
Not Active	Provincial Park
Watercourse (approximate location)	2024 Air Photo

0 500 1,000 2,000 Meters

July 2025

N



Map labels include street names: BANSHORE DR, LESLIE CRES, ENTWISTLE DR, GARAGE DR, HERITAGE DR, FILLINGER CRES, BELLAVISTA CRES, BANNING COURT, VISTAVIEW CRES, DENFORD PL, NEY DR, FINNERTY CRES, WILLIAMSON RD, LOGANS RUN, HARTWIG CRES, VISTAVIEW CRES, HAMMOND BAY RD, FOX PL, JACOBS LN, NORTON RD, MORGAN PL, RILEY PL, LAGUNA WAY, SHERIDAN RIDGE RD, EWEN PL, HAMMOND BAY RD, GULFVIEW DR, TIKI WAY, TIKI LANE, PIPER CRES, AMBIENCE DR, BURMAN DR, TANNY DR, and LOSTLAKE RD.

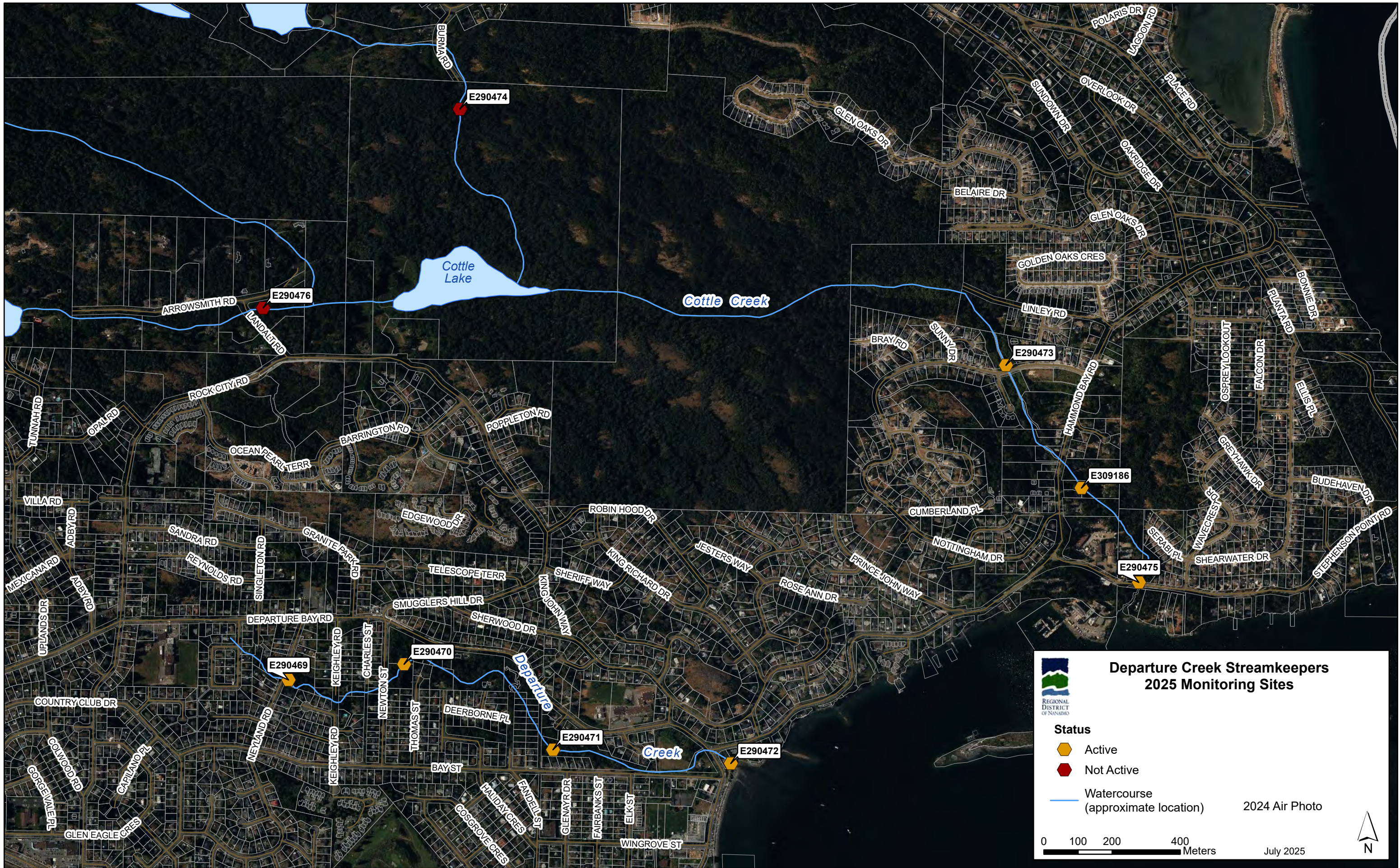
Walley Creek

E306256

E318233

E306257

E306434



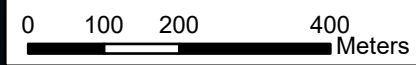
**Departure Creek Streamkeepers
2025 Monitoring Sites**



- Status**
- ⬡ Active
 - ⬡ Not Active

— Watercourse
(approximate location)

2024 Air Photo



July 2025

