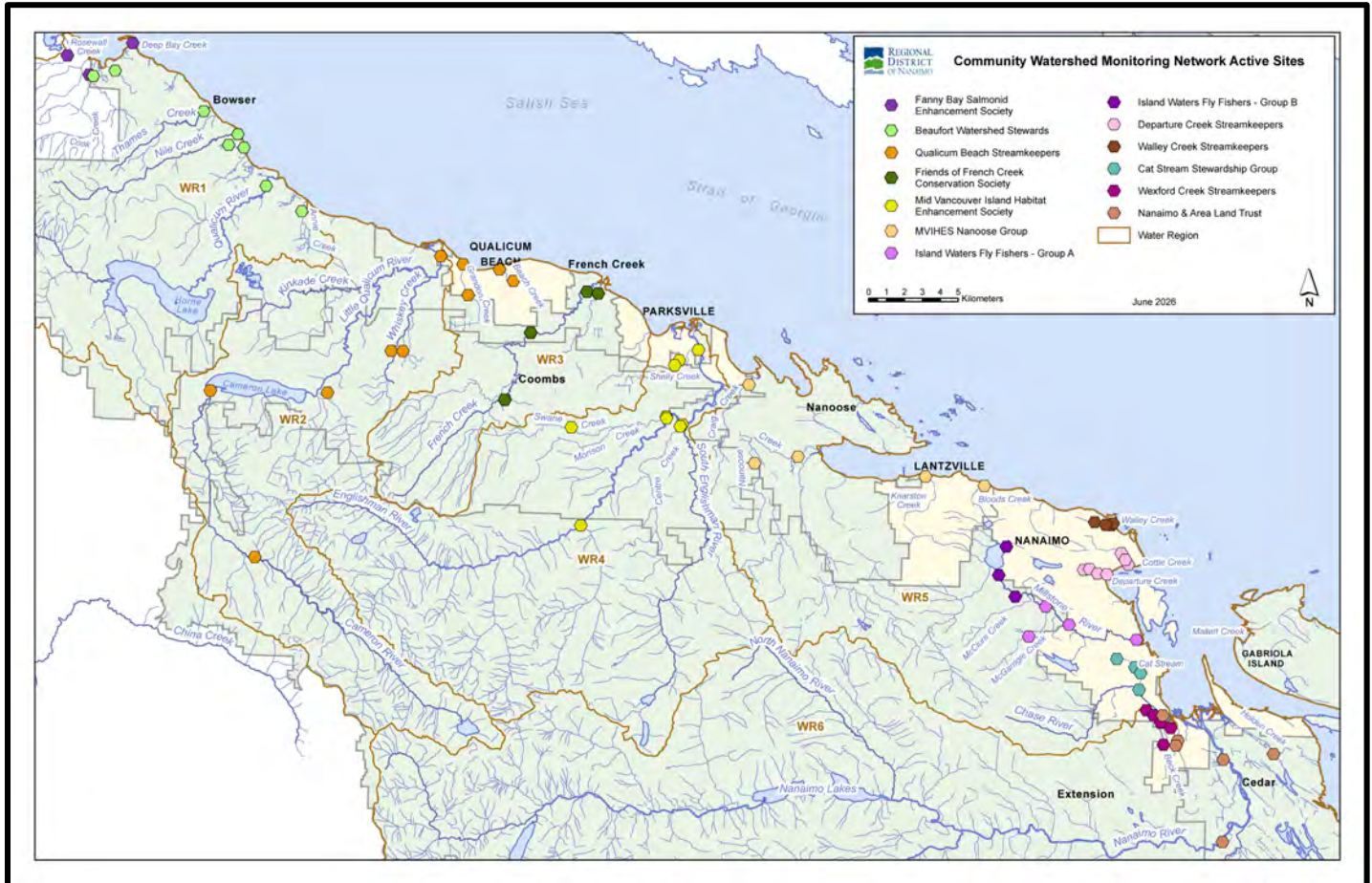


Community Watershed Monitoring Network 2025 Results by Water Region



Included in Water Region (WR) 4 package:

1. CWMN WR4 sample sites
2. How to interpret a box plot
3. Box Plot Comparison – 2025 data to previous years: *displayed by parameter (Turbidity, Dissolved Oxygen, Temperature, Conductivity) & sample period (summer, fall)*
4. Mid Vancouver Island Habitat Enhancement Society (MVIHES)



Water Region 4
sampled by:

Mid Vancouver Island Habitat Enhancement Society (MVIHES)

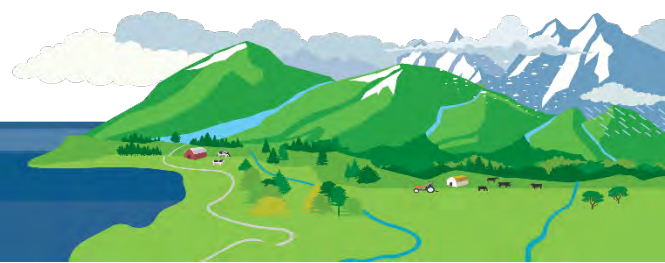


WR4 CWMN Sample Sites:

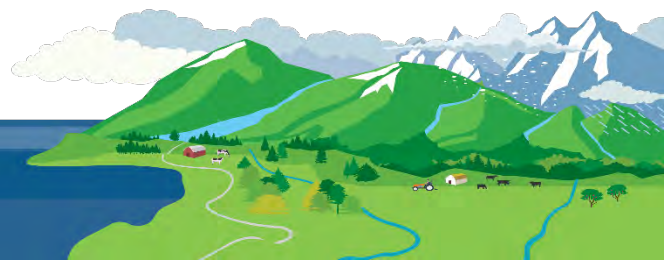
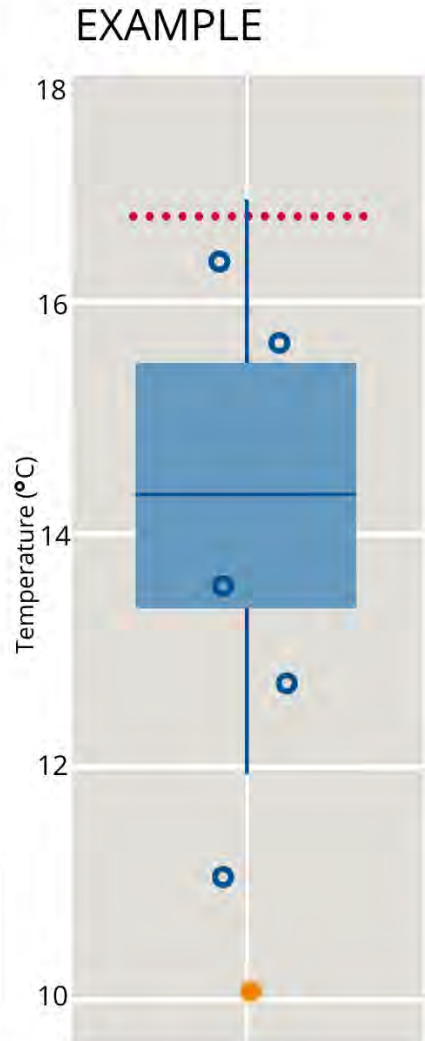
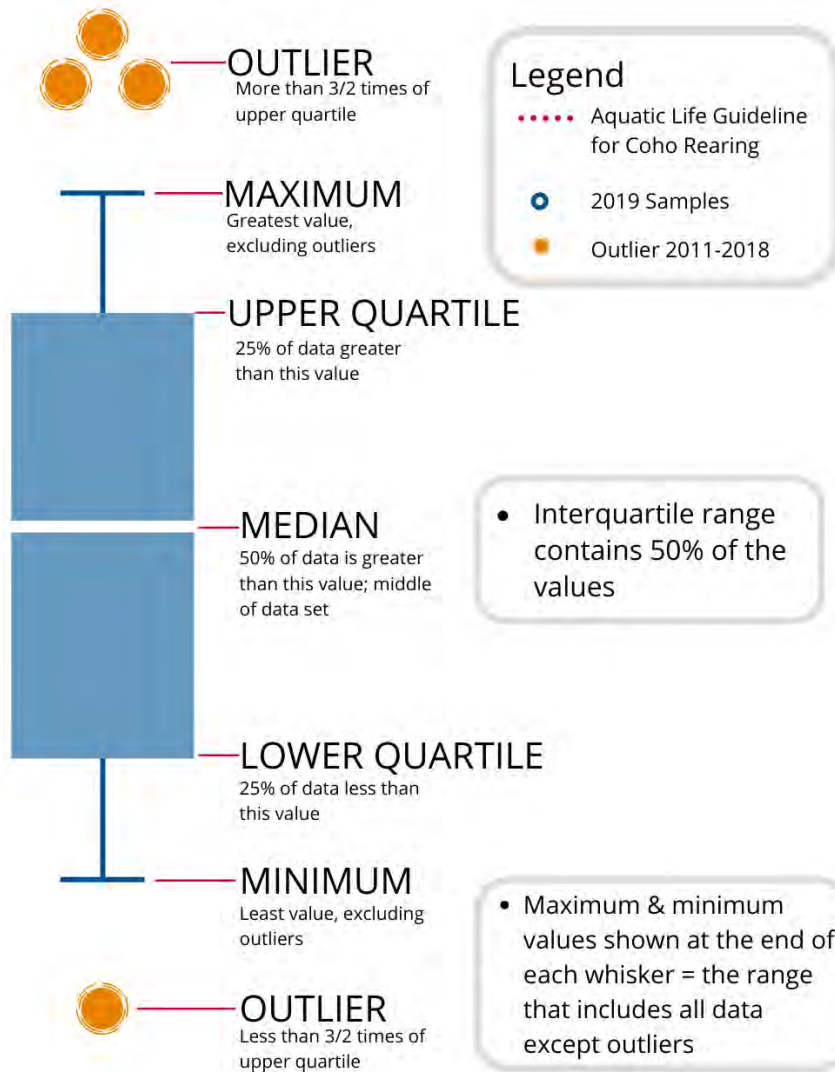
The table below shows the sites monitored by each of the streamkeeper organizations, as well as the number of years and which years a site was sampled. The number of years is important to keep in mind when interpreting the box plots as the plot for each site may contain a slightly different temporal range.

Group	EMS ID	Geographic Description	Total Years Sampled	Years Sampled
MVIHES	E290452	Shelly Creek @ end of Blower Rd	12	2014 - present
MVIHES	E248836	South Englishman River u/s from Englishman River	15	2011- present
MVIHES	E282969	Upper Englishman River u/s Centre Fork Creek	15	2011- present
MVIHES	E248834	Englishman River U/S from Morison Creek	15	2011- present
MVIHES	E308186	Swayne Creek d/s of Errington Road	12	2014 - present
MVIHES	E248835	Morison Creek U/S from Englishman River	15	2011 - present
MVIHES	E287131	Shelly Creek @ Hamilton Road	12	2014 - present
MVIHES	E290452	Shelly Creek @ end of Blower Rd	11.5	2014 - present*
MVIHES	0121580	Englishman River at Highway 19A	15	2011 - present

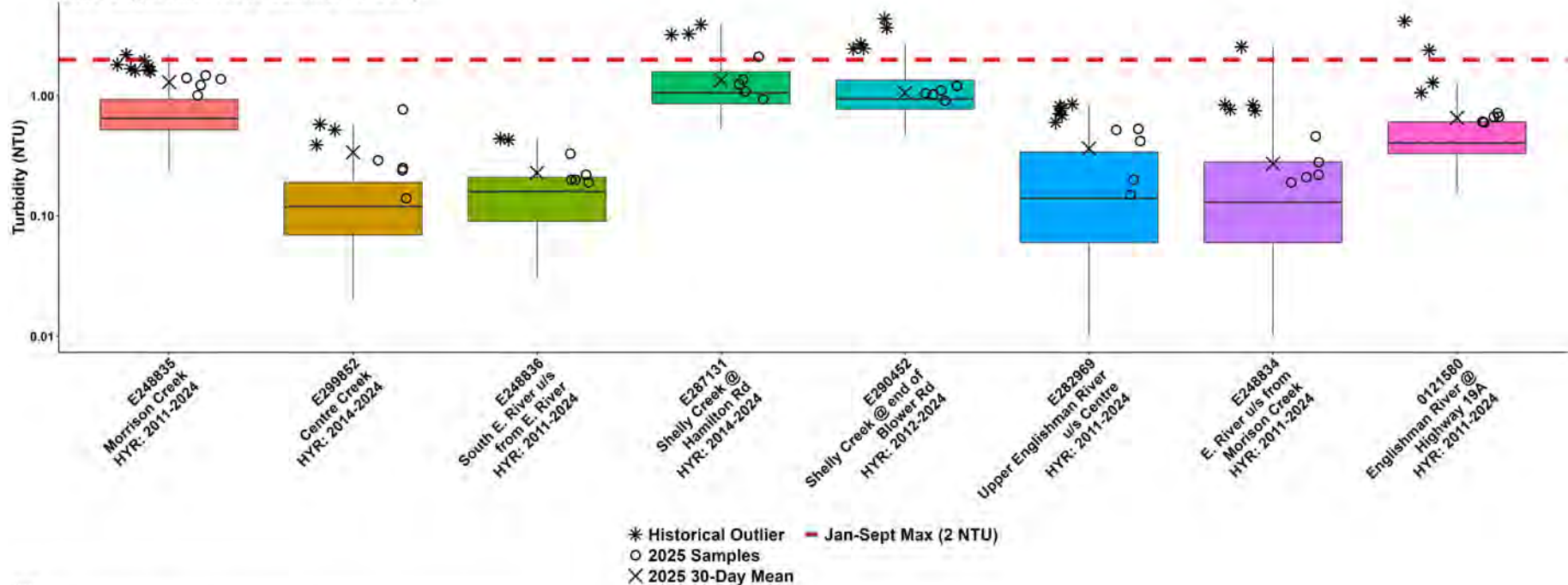
*WR 4 notes for number of years sampled: *Fall 2015 not monitored to complete restoration work*



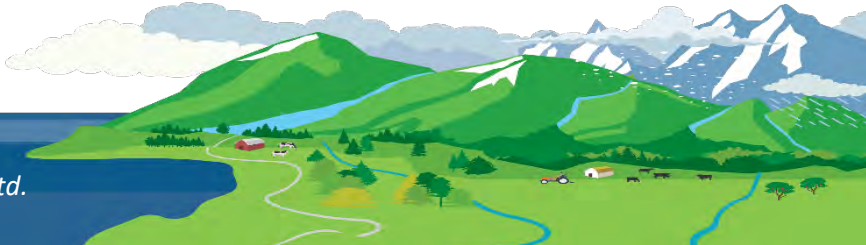
How to Interpret a Box Plot:



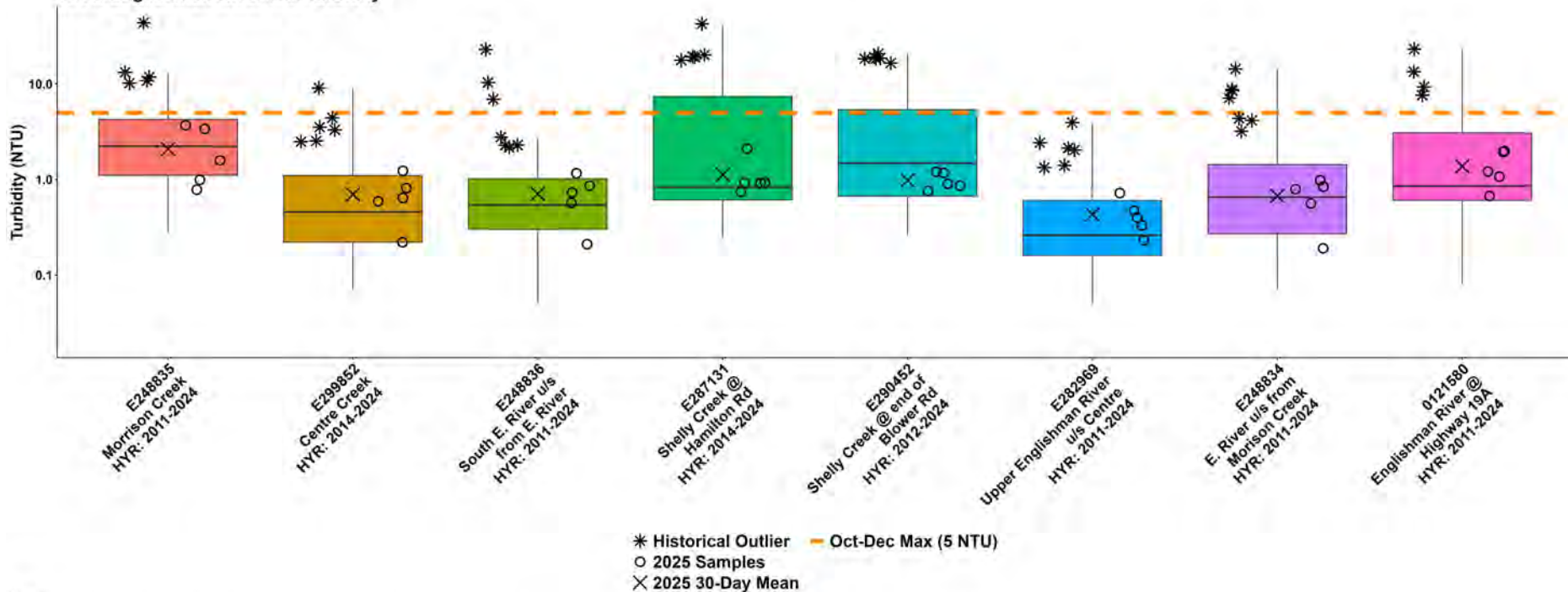
WR4: Englishman River Summer Turbidity



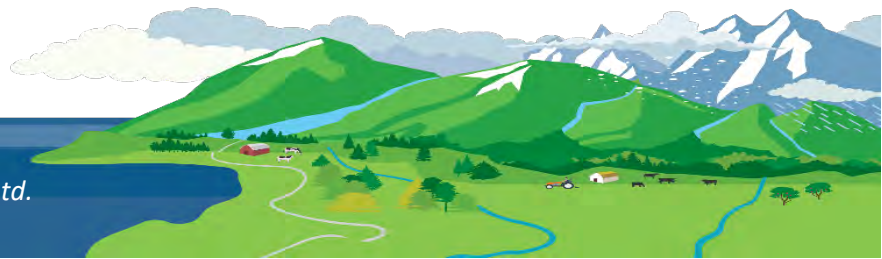
Note: HYR indicates the year range for which historical data were included for a sample location

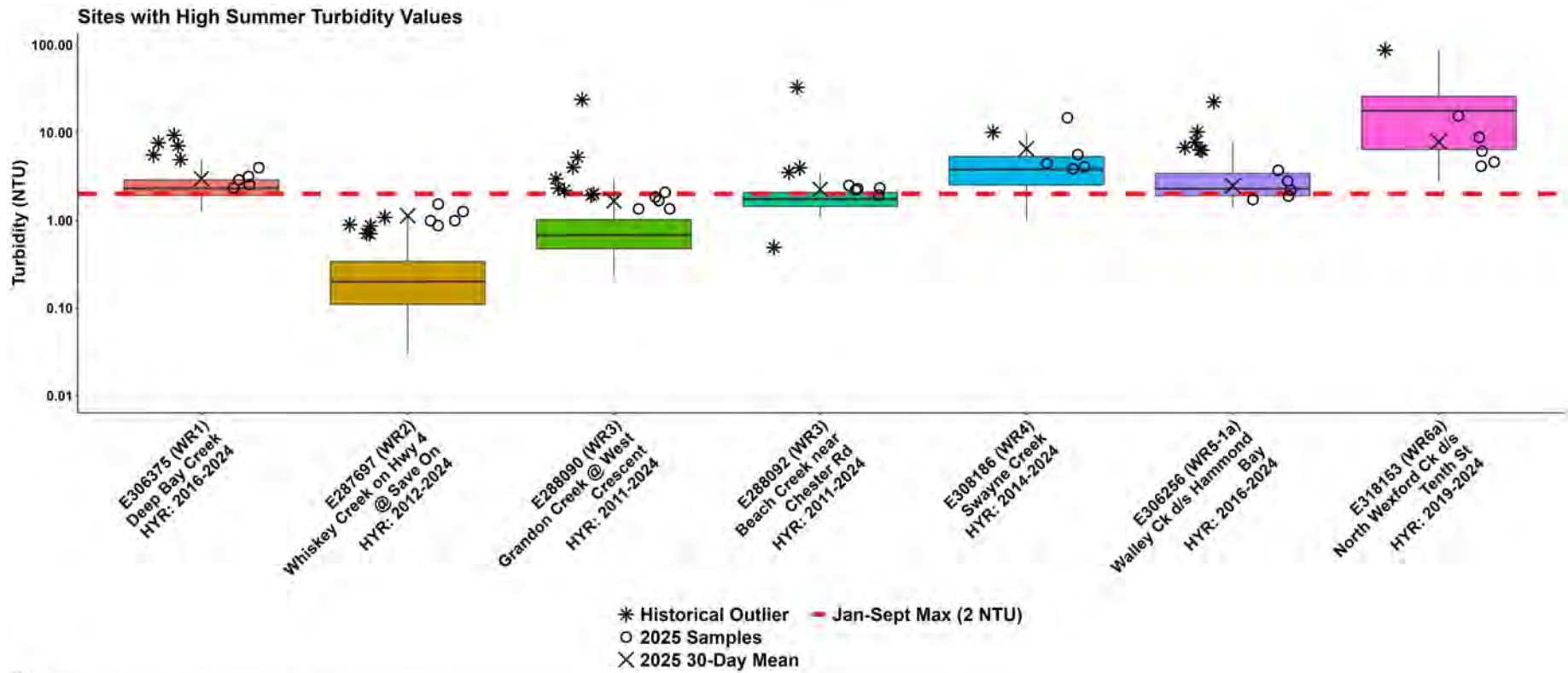


WR4: Englishman River Fall Turbidity



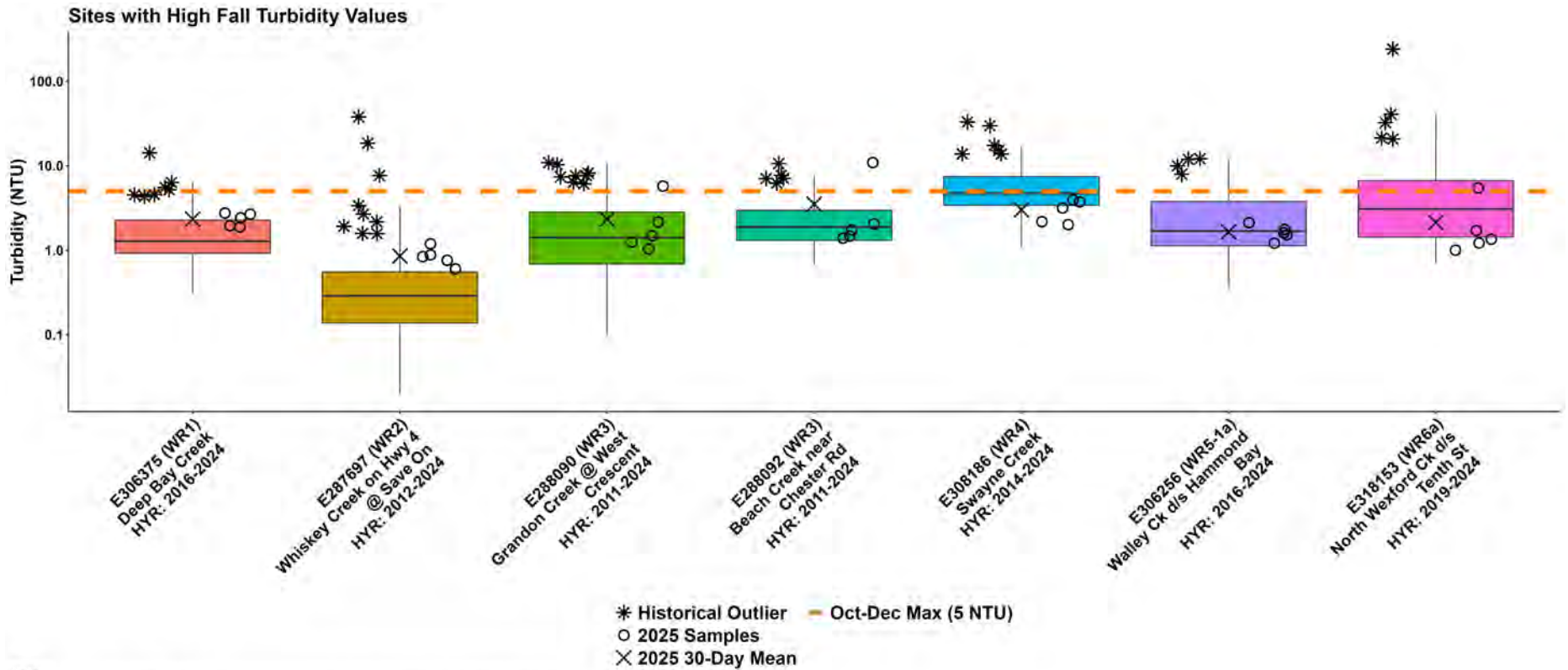
Note:
HYR: indicates the year range for which historical data were included for a sample location.





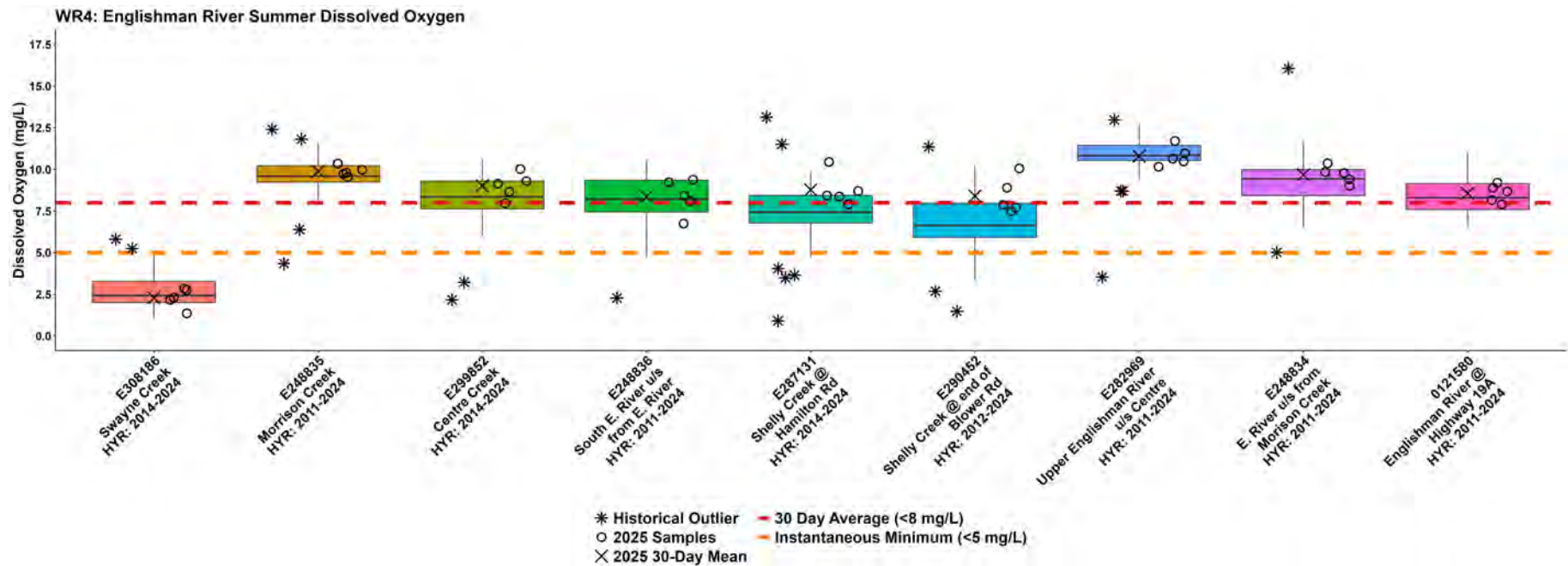
Note:
HYR: Indicates the year range for which historical data were included for a sample location.





Note:
HYR: Indicates the year range for which historical data were included for a sample location

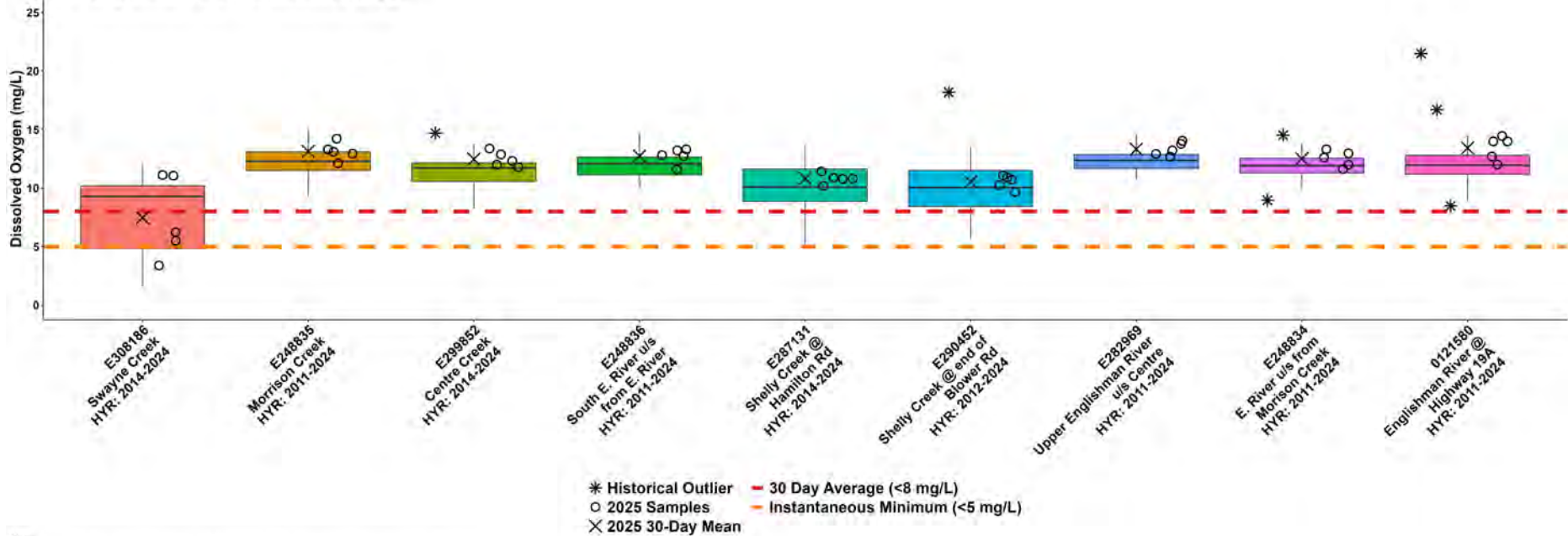




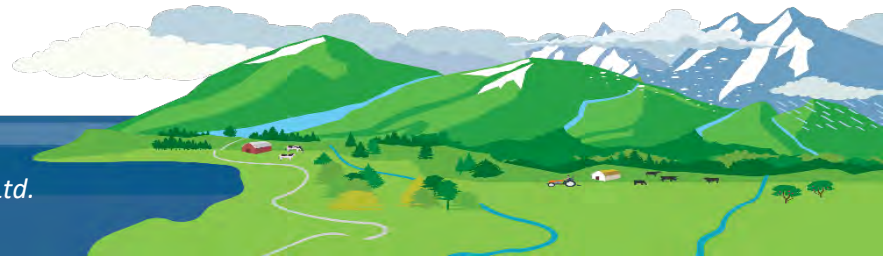
Note:
 HYR: indicates the year range for which historical data were included for a sample location.



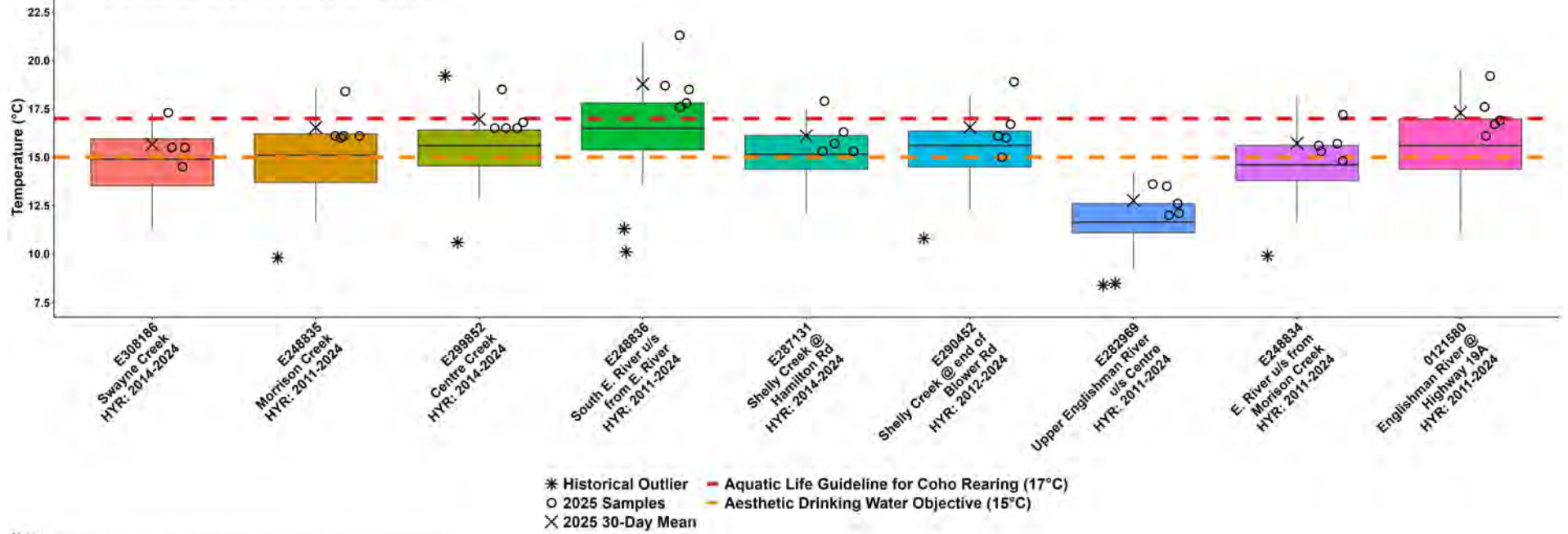
WR4: Englishman River Fall Dissolved Oxygen



Note: HYR: indicates the year range for which historical data were included for a sample location.



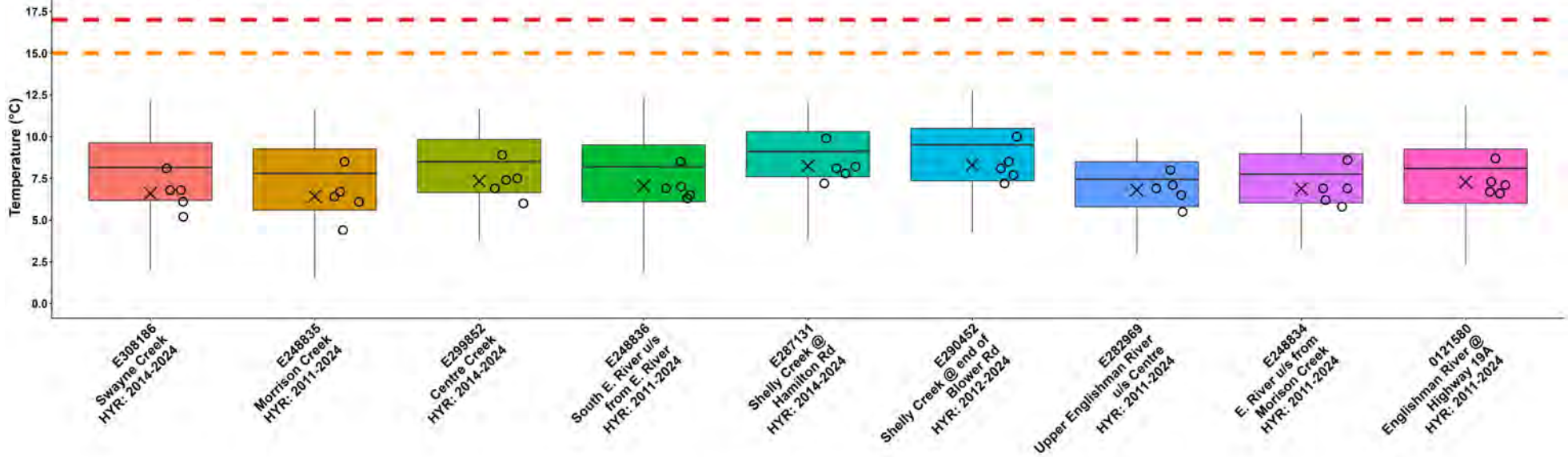
WR4: Englishman River Summer Temperature



Note:
HYR: indicates the year range for which historical data were included for a sample location.

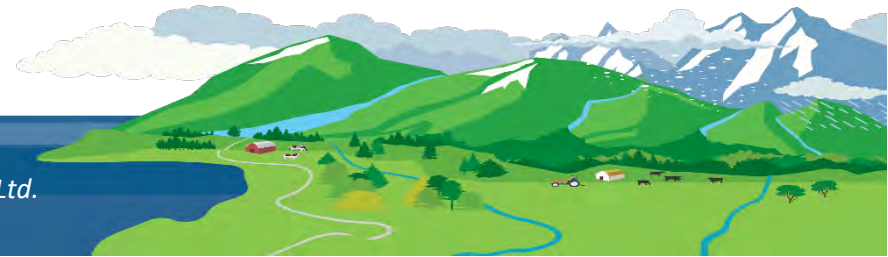


WR4: Englishman River Fall Temperature

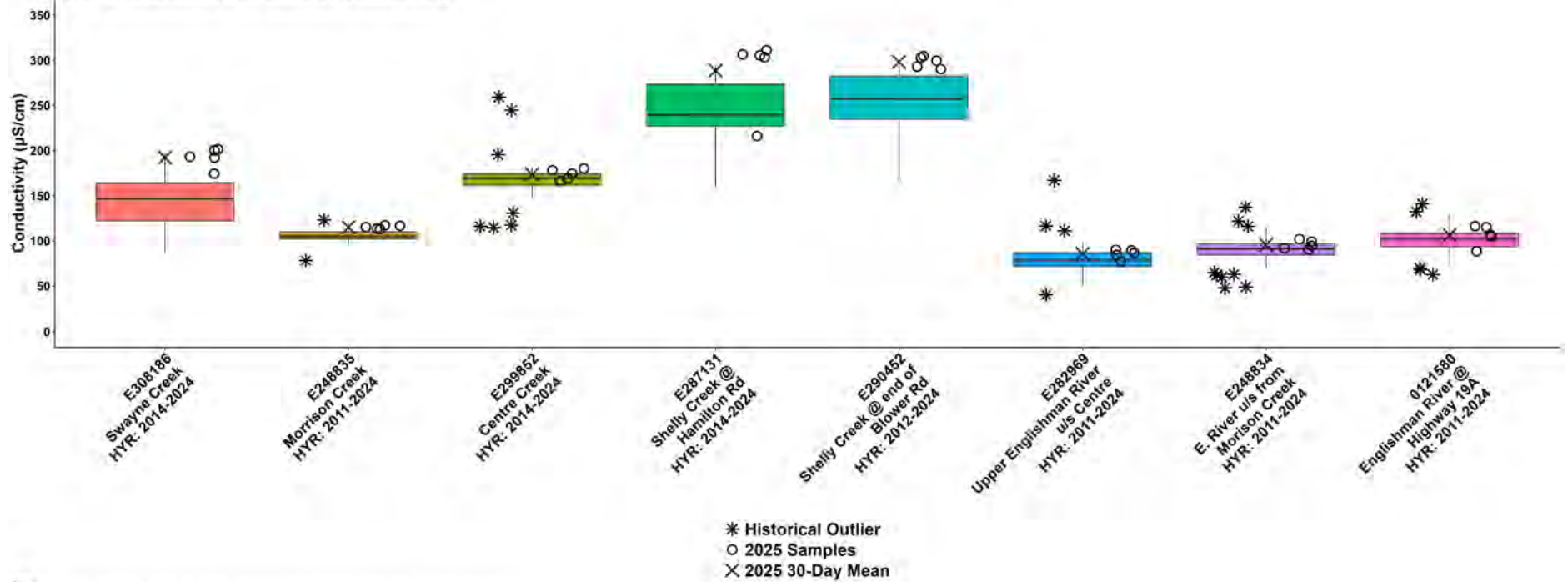


* Historical Outlier
 ○ 2025 Samples
 X 2025 30-Day Mean
 — Aquatic Life Guideline for Coho Rearing (17°C)
 — Aesthetic Drinking Water Objective (15°C)

Note:
 HYR: indicates the year range for which historical data were included for a sample location.



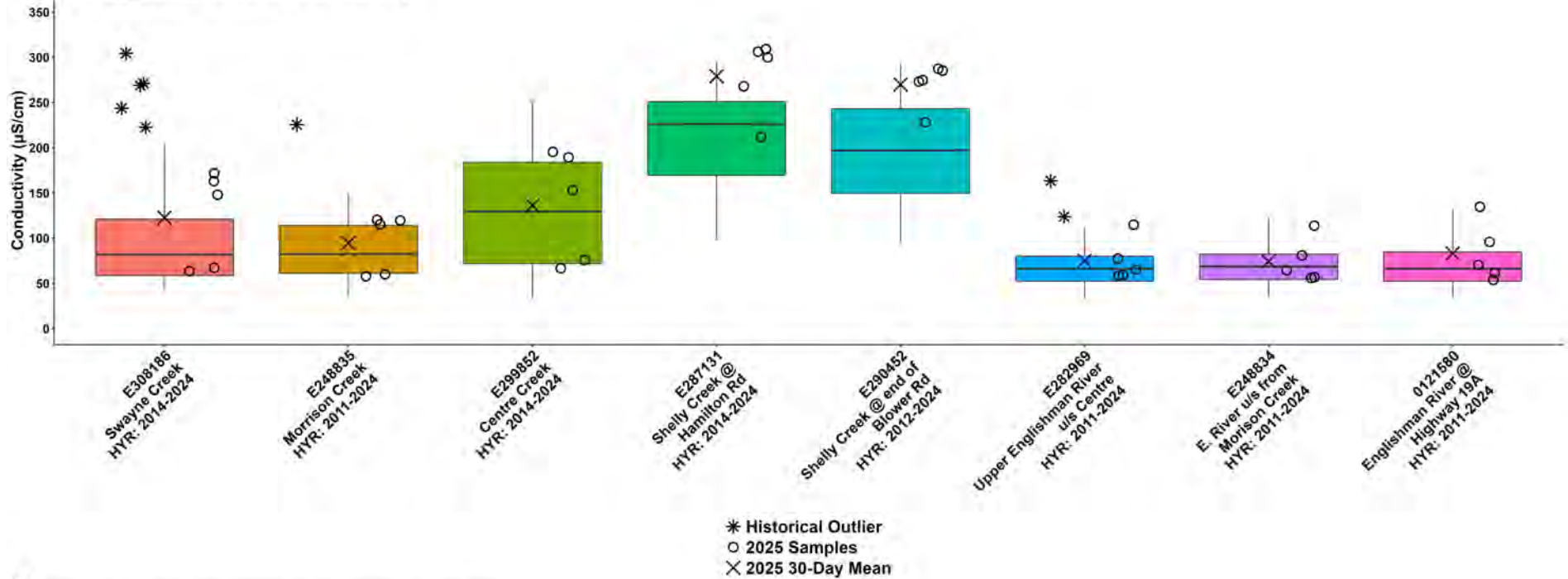
WR4: Englishman River Summer Conductivity



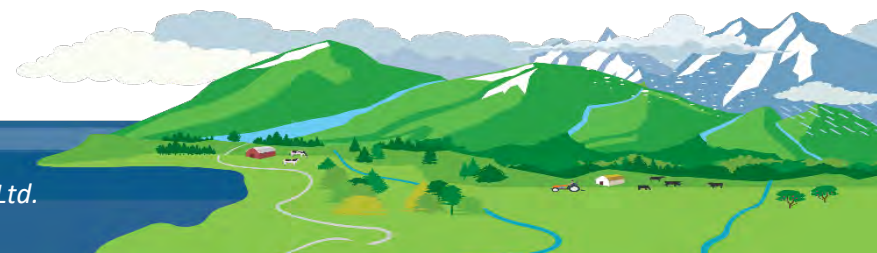
Note: HYR indicates the year range for which historical data were included for a sample location.

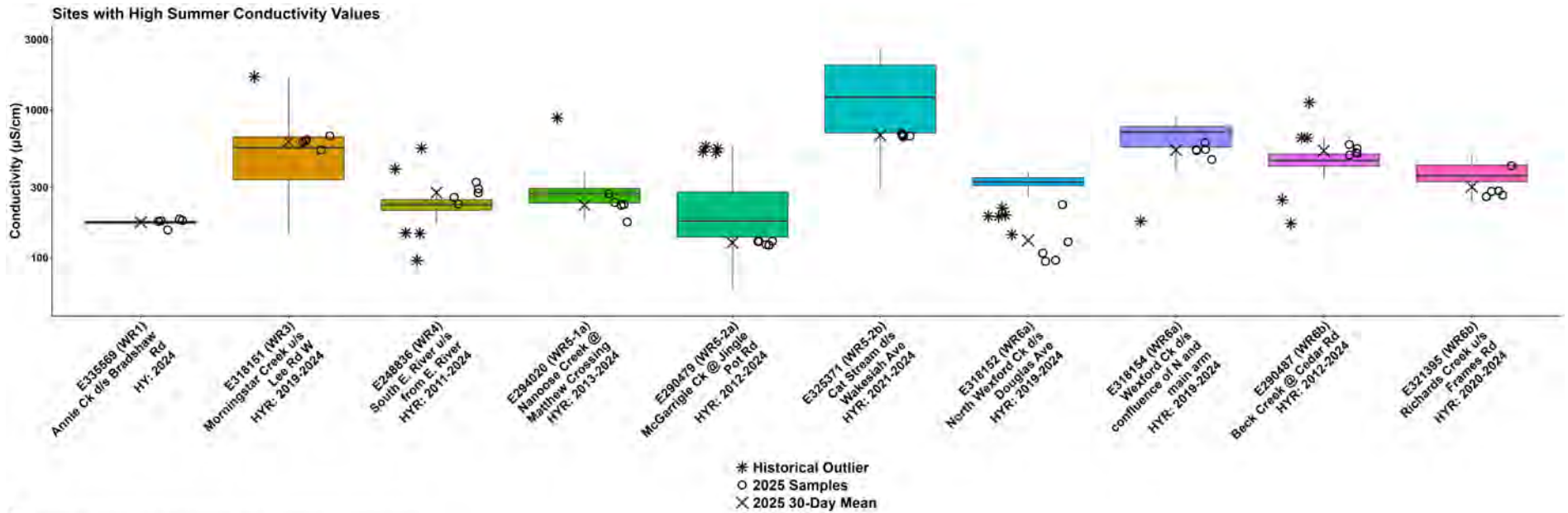


WR4: Englishman River Fall Conductivity

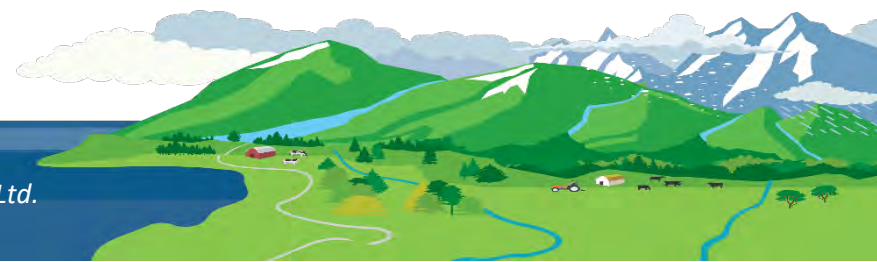


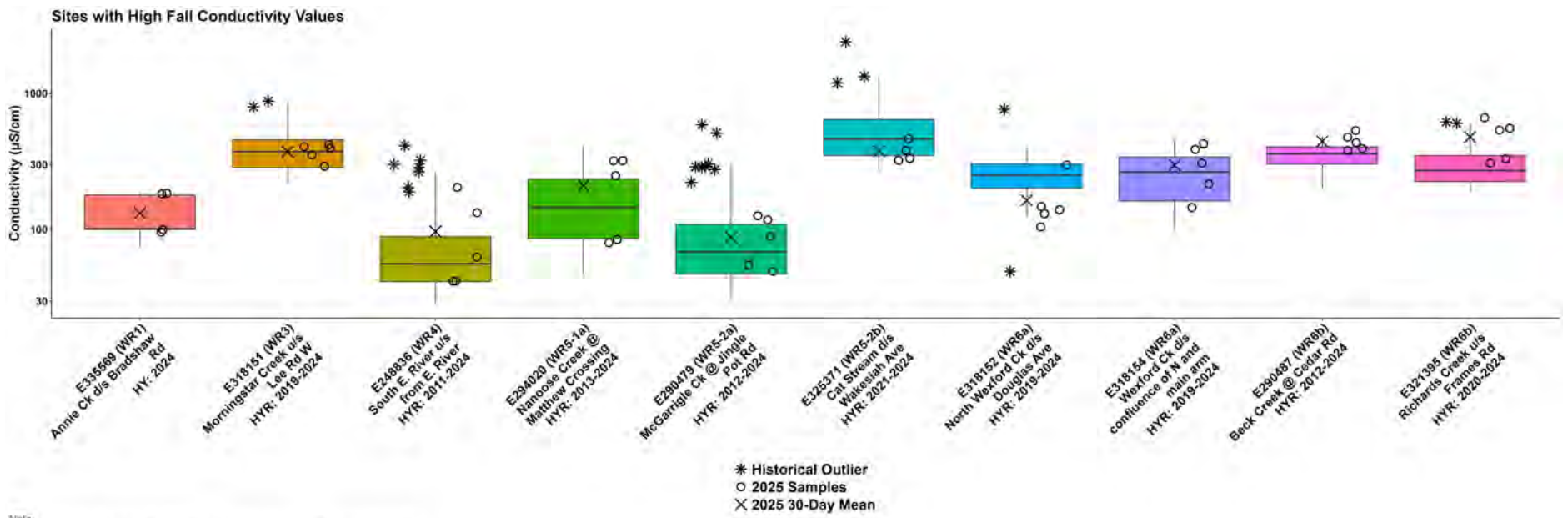
Notes:
HYR: Indicates the year range for which historical data were included for a sample location



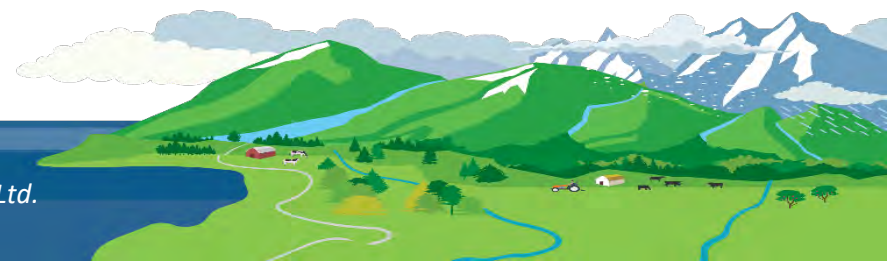


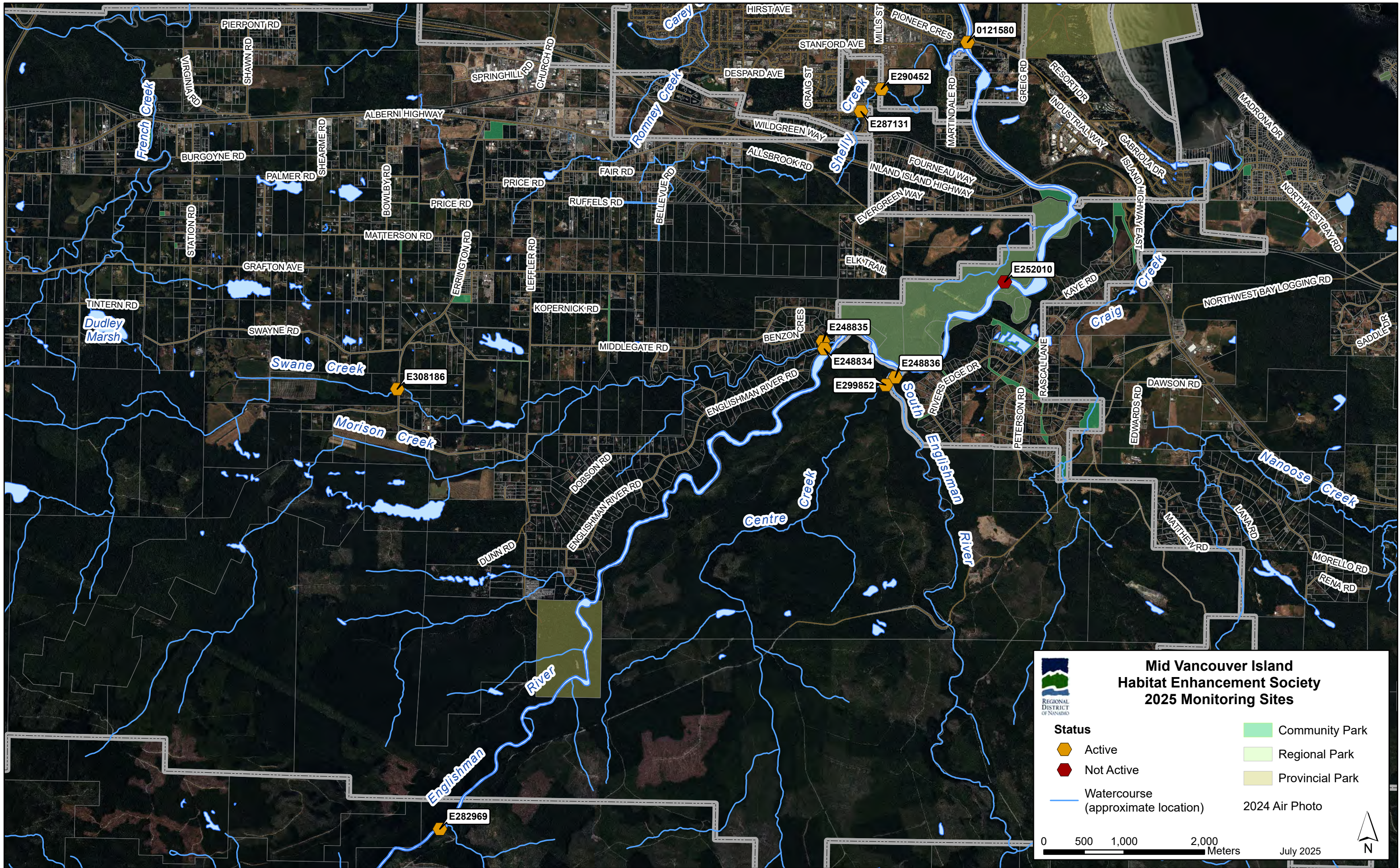
Note:
 HY: indicates the single year for which historical data was included for a sample location.
 HYR: indicates the year range for which historical data were included for a sample location.





No(p):
 HY: indicates the single year for which historical data was included for a sample location.
 HYR: indicates the year range for which historical data were included for a sample location.





**Mid Vancouver Island
Habitat Enhancement Society
2025 Monitoring Sites**

REGIONAL DISTRICT OF NANAIMO

Status	Community Park
Active	Regional Park
Not Active	Provincial Park
Watercourse (approximate location)	2024 Air Photo

0 500 1,000 2,000 Meters

July 2025