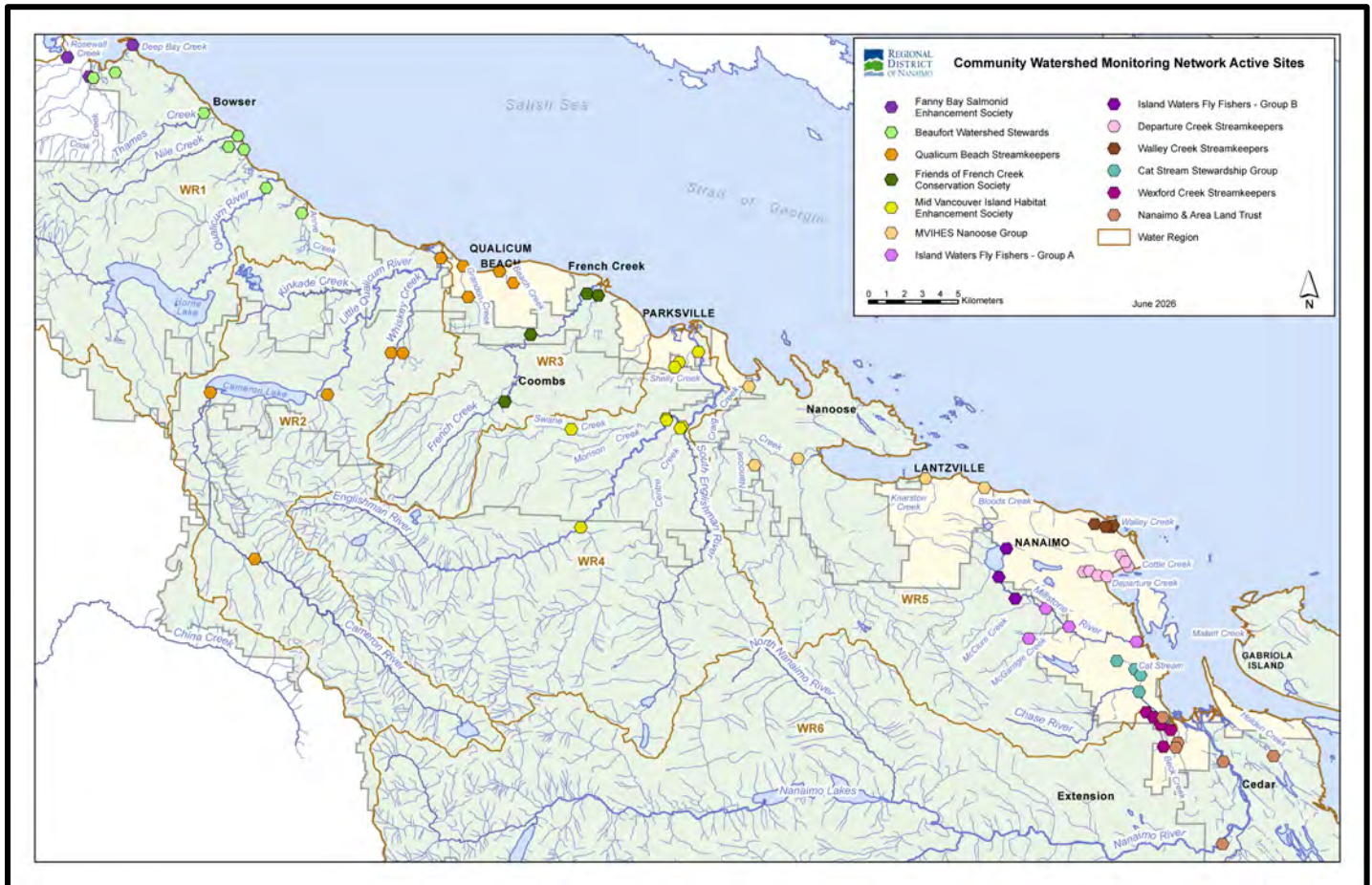


Community Watershed Monitoring Network 2025 Results by Water Region



Included in Water Region (WR) 3 package:

1. CWMN WR3 sample sites
2. How to interpret a box plot
3. Box Plot Comparison – 2025 data to previous years: *displayed by parameter (Turbidity, Dissolved Oxygen, Temperature, Conductivity) & sample period (summer, fall)*
4. QBS CWMN map of sample sites
5. FFCCS CWMN map of sample sites



Water Region 3
sampled by:
Qualicum Beach Streamkeepers (QBS)
&
Friends of French Creek Conservation Society (FFCCS)



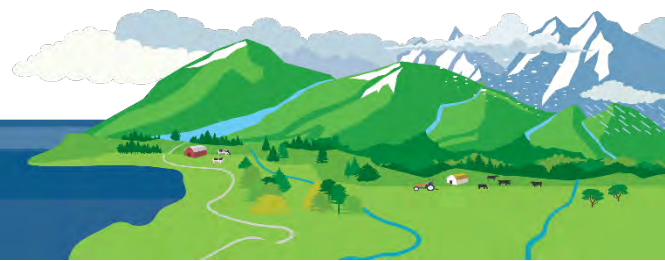
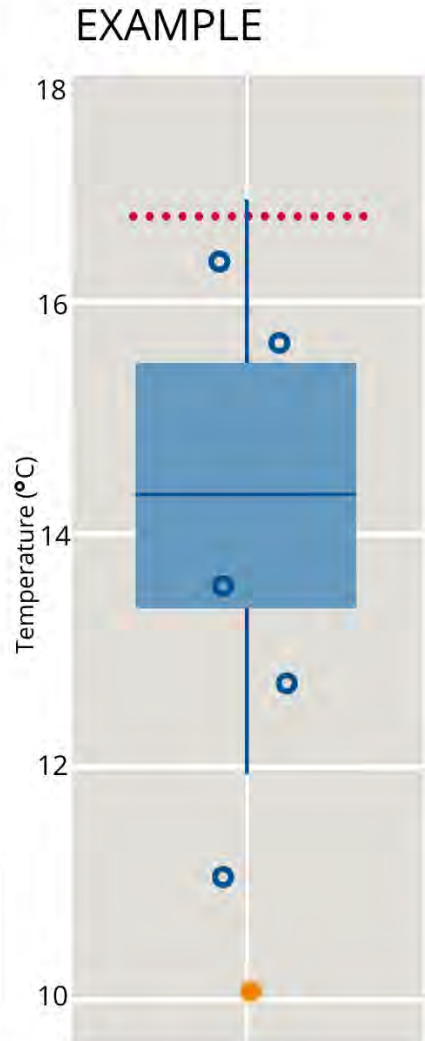
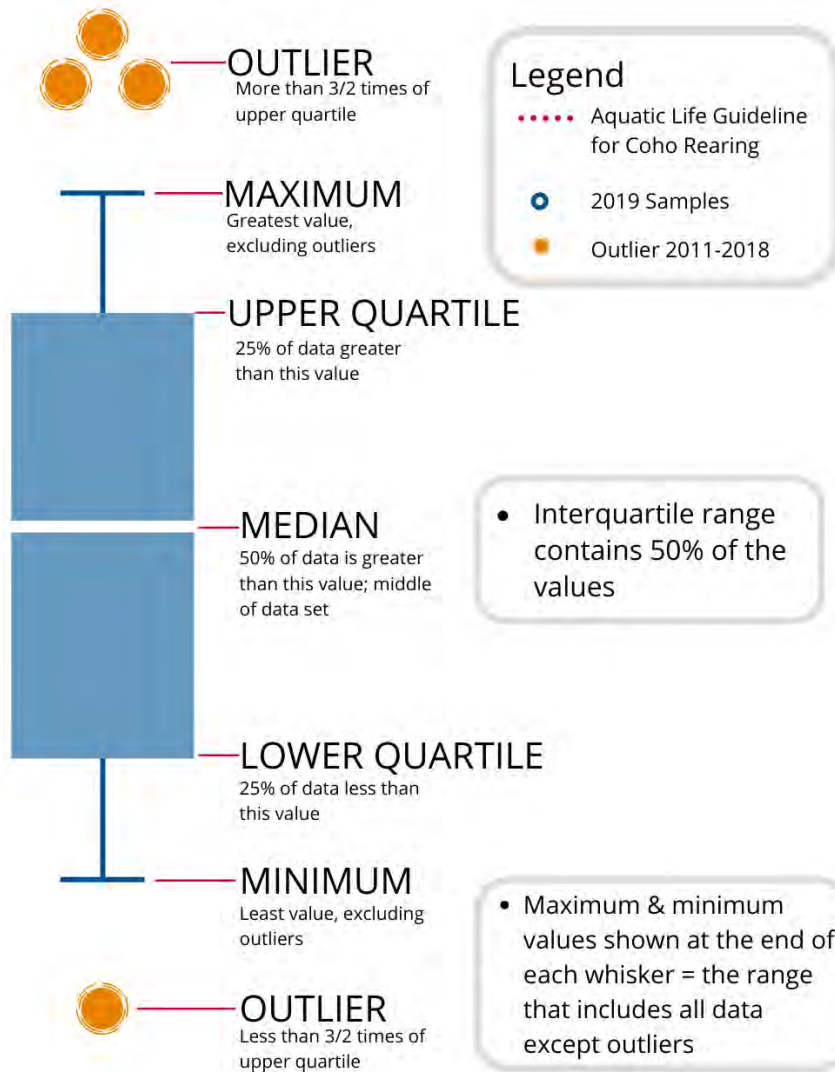
WR3 CWMN Sample Sites:

The table below shows the sites monitored by each of the streamkeeper organizations, as well as the number of years and which years a site was sampled. The number of years is important to keep in mind when interpreting the box plots as the plot for each site may contain a slightly different temporal range.

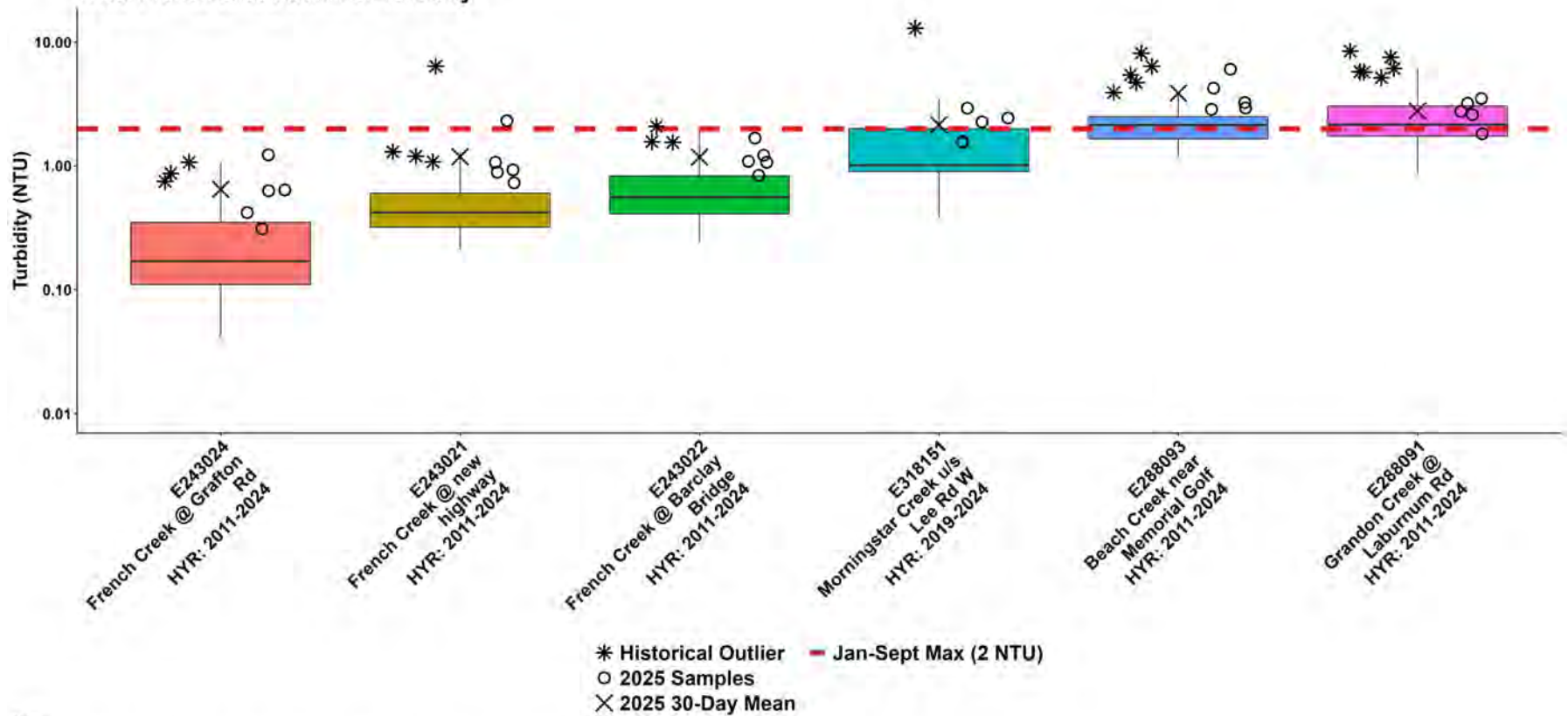
Group	EMS ID	Geographic Description	Total Years Sampled	Years Sampled
QBS	E288091	Grandon Creek at Laburnum Road	15	2011 - present
QBS	E288090	Grandon Creek at West Crescent (Caissons)	15	2011 - present
QBS	E288092	Beach Creek near Chester Road at Hemsworth Road	15	2011 - present
QBS	E288093	Beach Creek near Memorial Golf Course Pond (at Sylvia's?)	15	2011 - present
FFCCS	E243024	French Creek at Grafton Road	15	2011 - present
FFCCS	E243021	French Creek at new highway	15	2011 - present
FFCCS	E243022	French Creek at Barclay Bridge	15	2011 - present
FFCCS	E318151	Morningstar Creek 100m u/s Lee Rd W	7	2019 - present



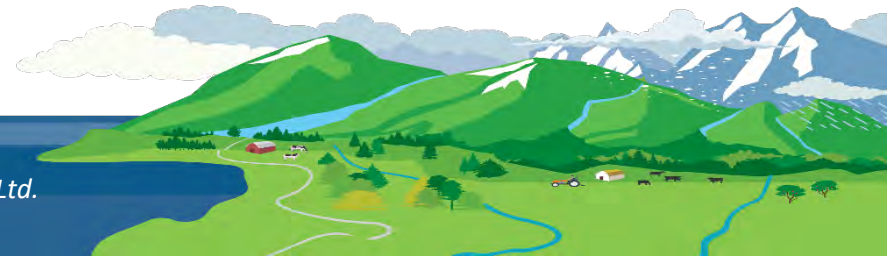
How to Interpret a Box Plot:



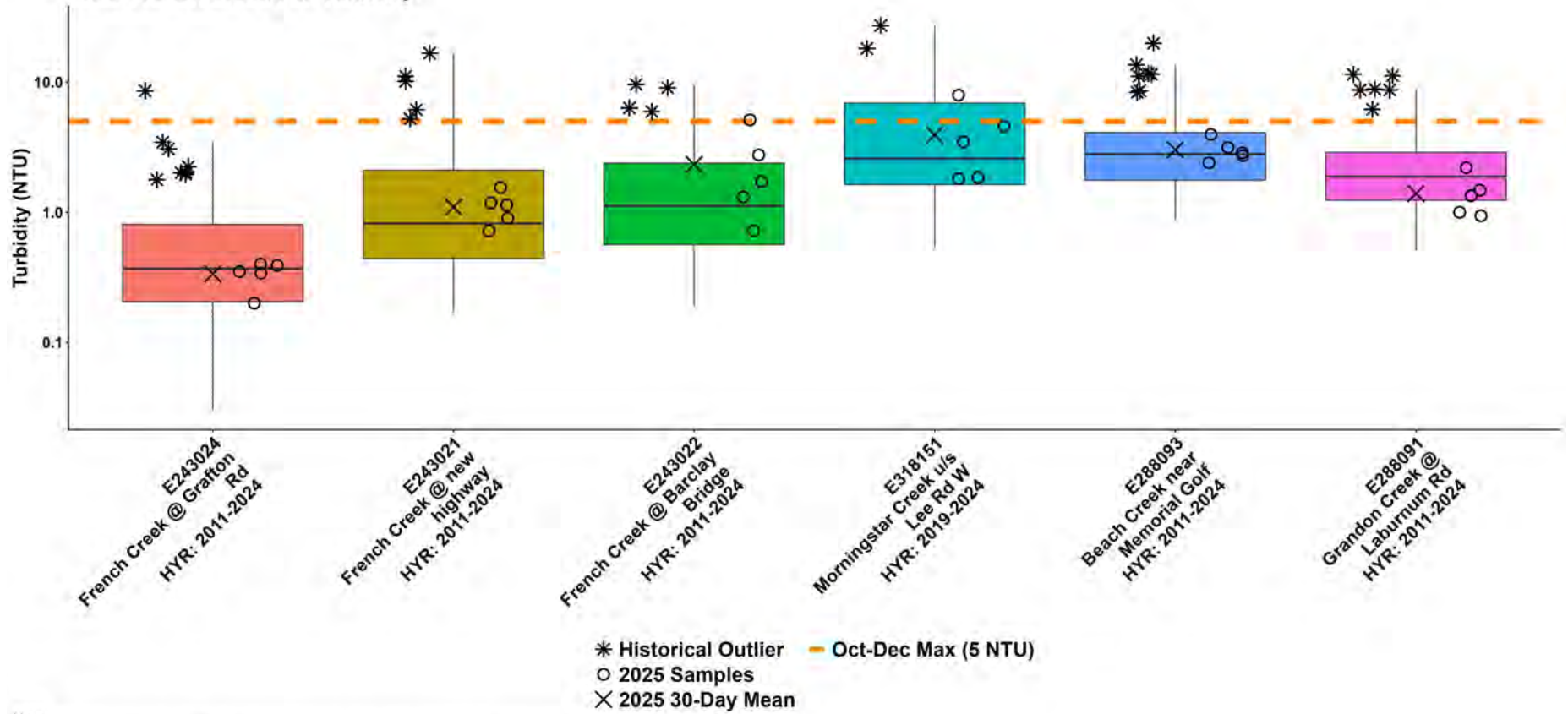
WR3: French Creek Summer Turbidity



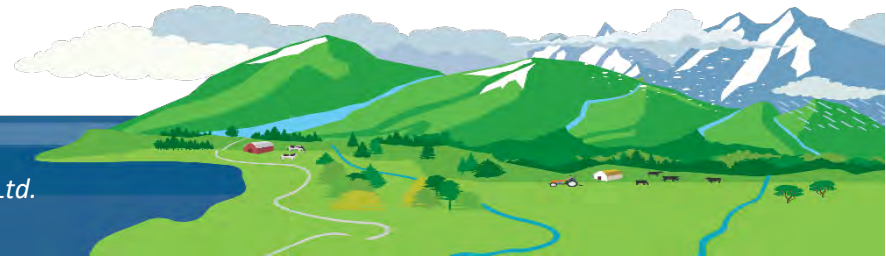
Note:
HYR: indicates the year range for which historical data were included for a sample location.

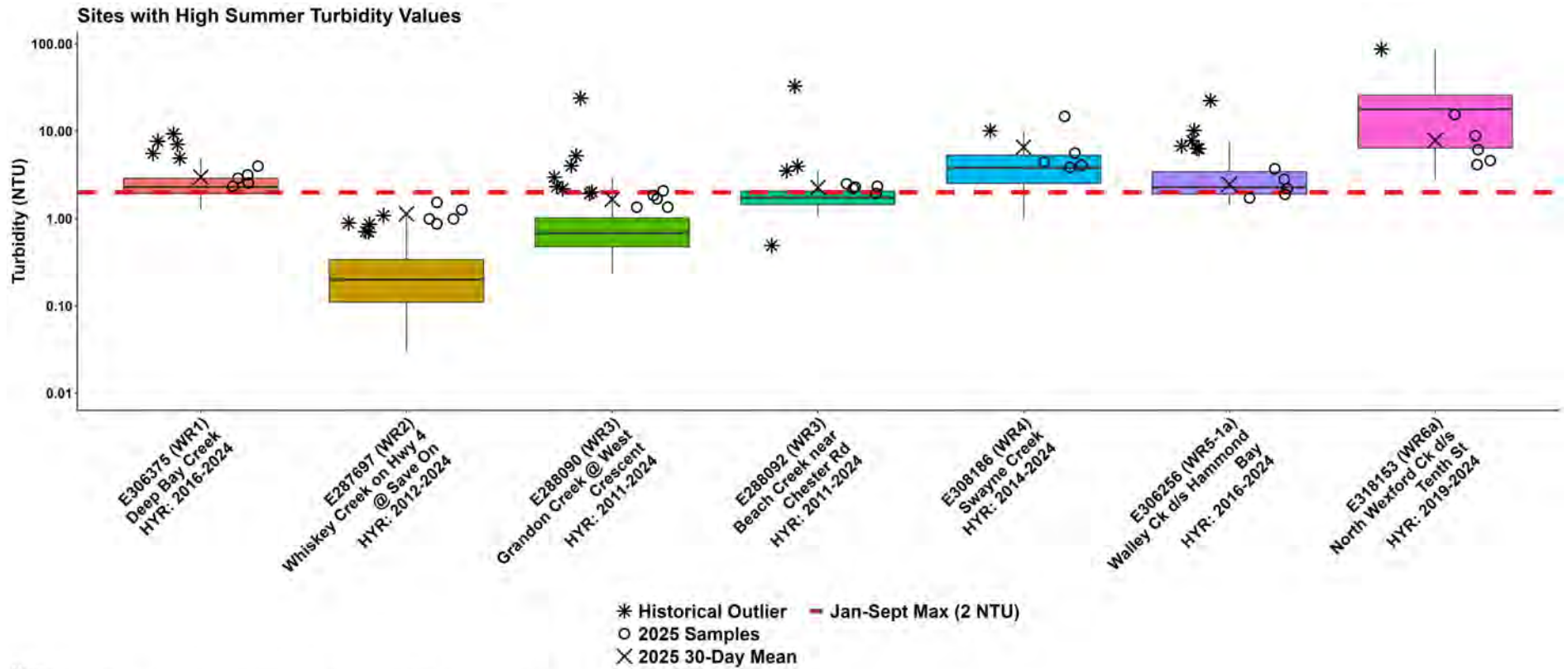


WR3: French Creek Fall Turbidity

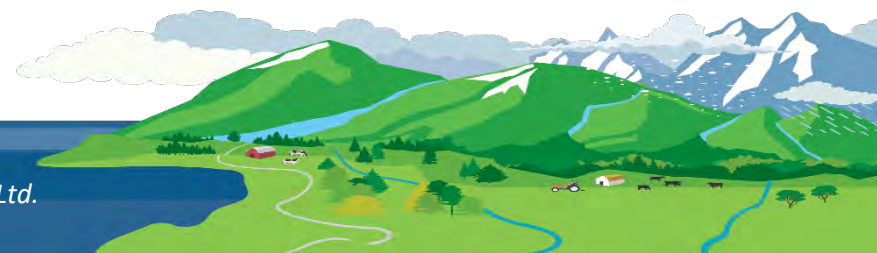


Note:
HYR: indicates the year range for which historical data were included for a sample location.

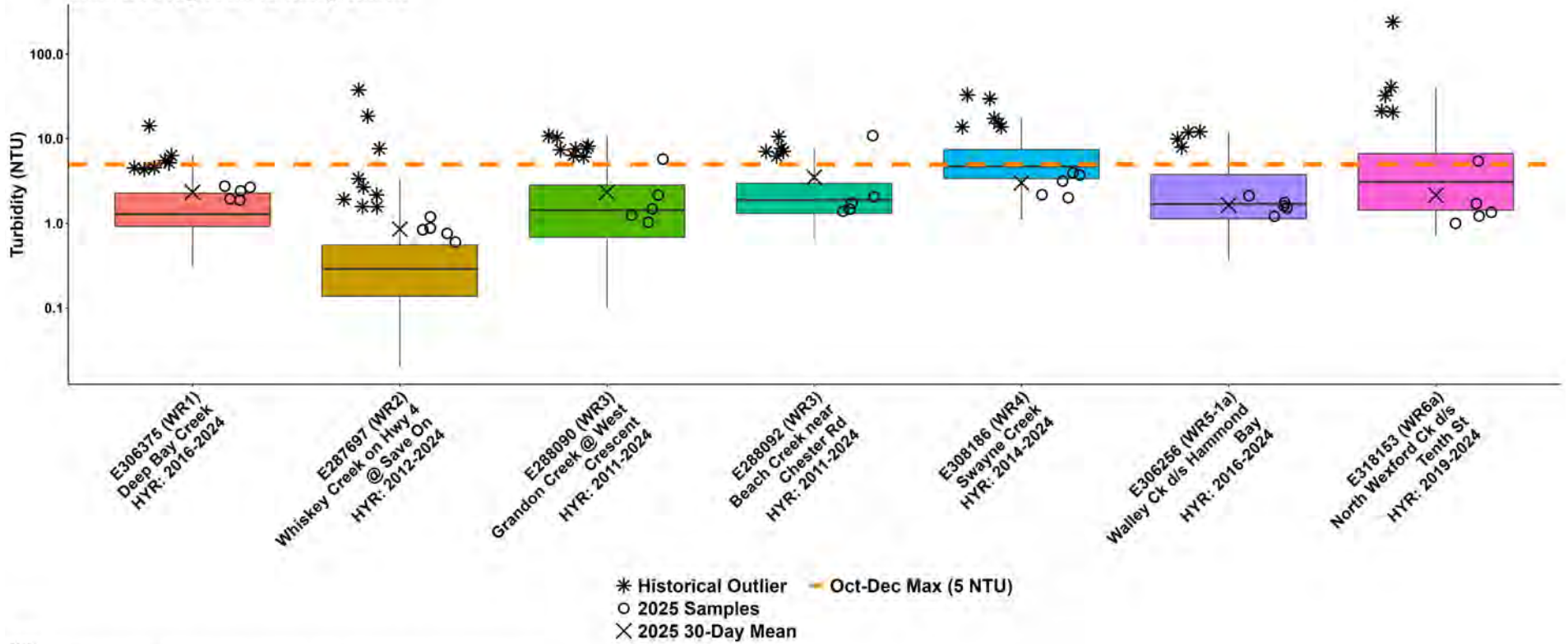




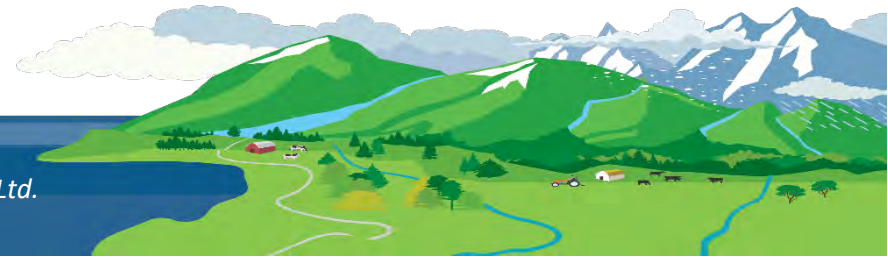
Note:
 HYR: indicates the year range for which historical data were included for a sample location.



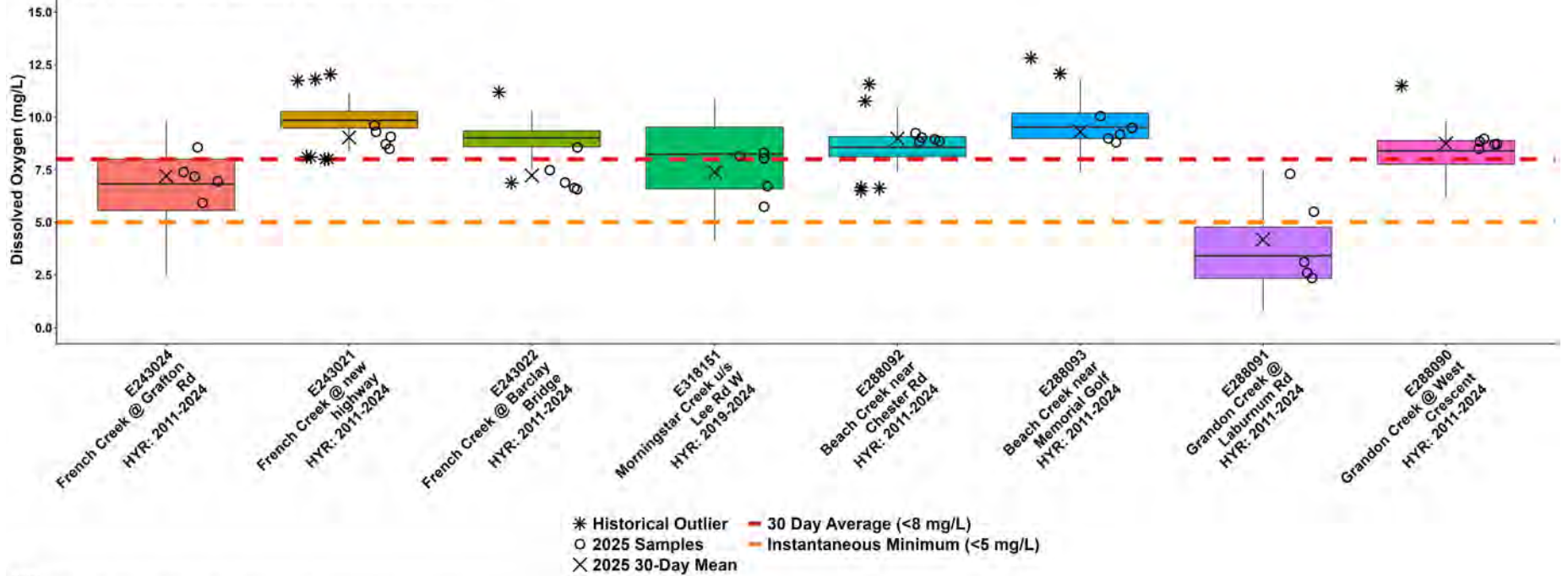
Sites with High Fall Turbidity Values



Note:
HYR: indicates the year range for which historical data were included for a sample location.



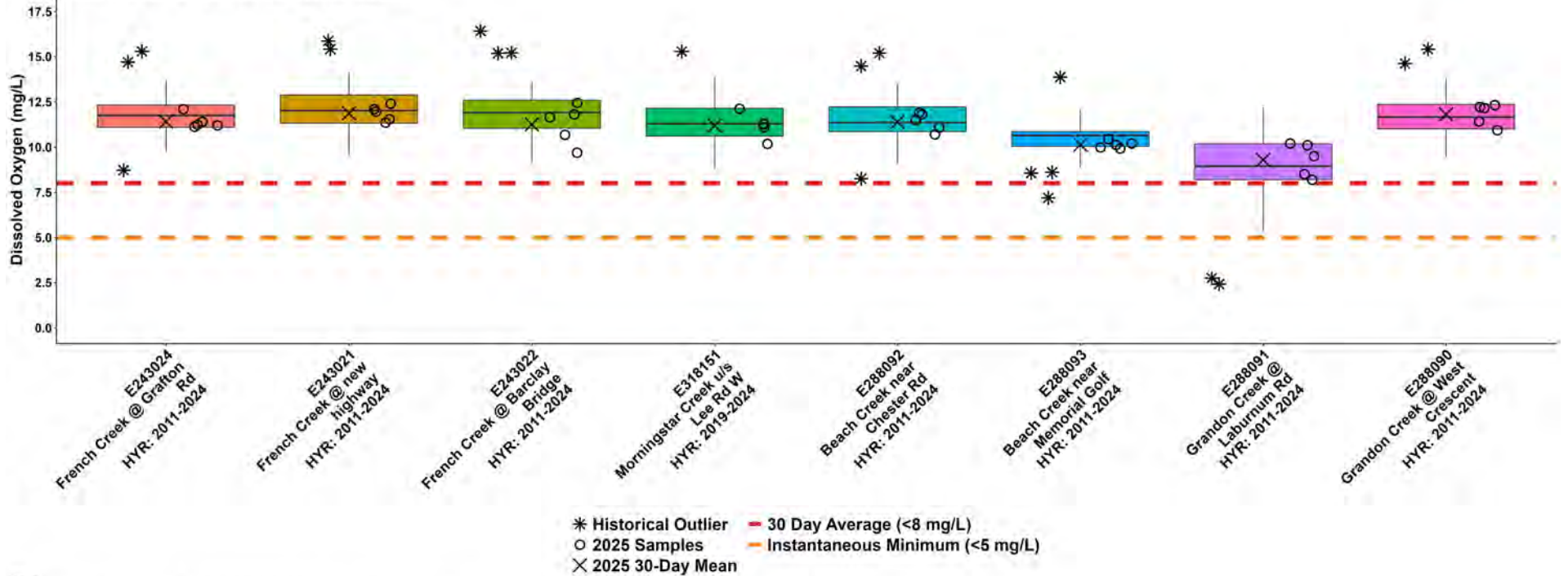
WR3: French Creek Summer Dissolved Oxygen



Note: HYR: indicates the year range for which historical data were included for a sample location.



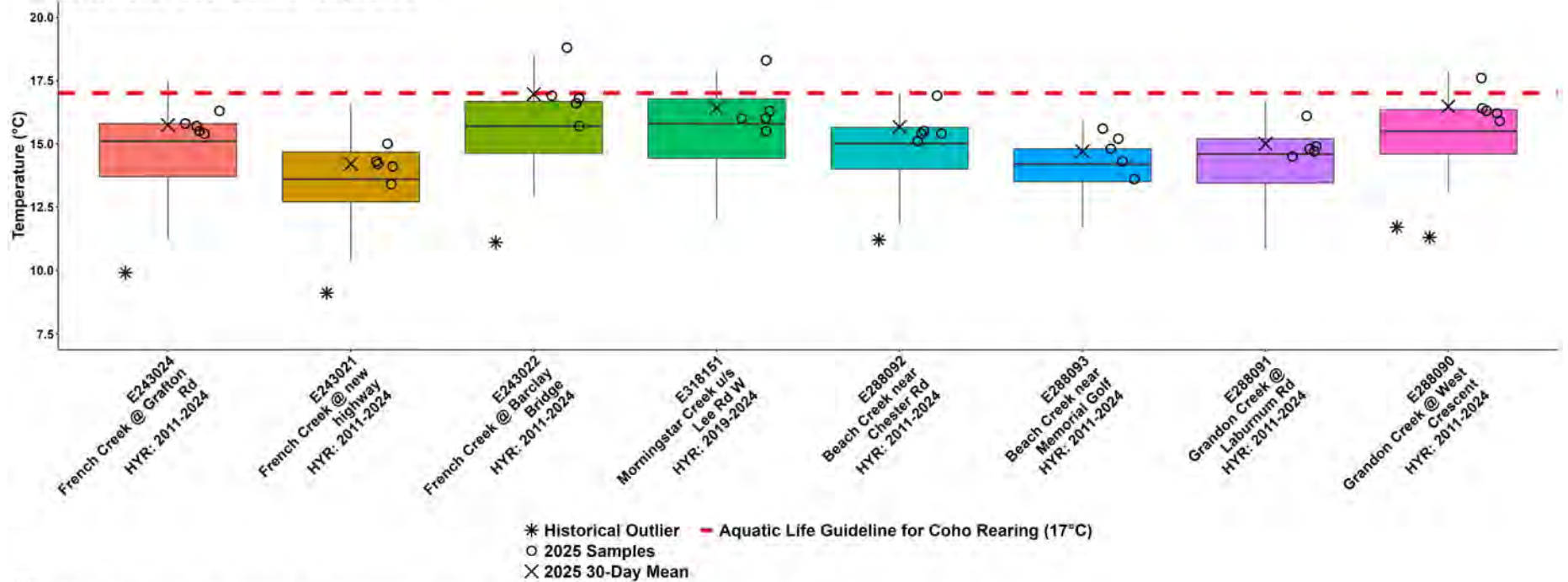
WR3: French Creek Fall Dissolved Oxygen



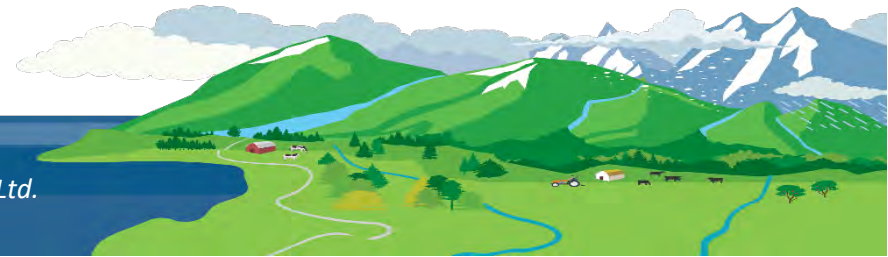
Note:
HYR: indicates the year range for which historical data were included for a sample location.



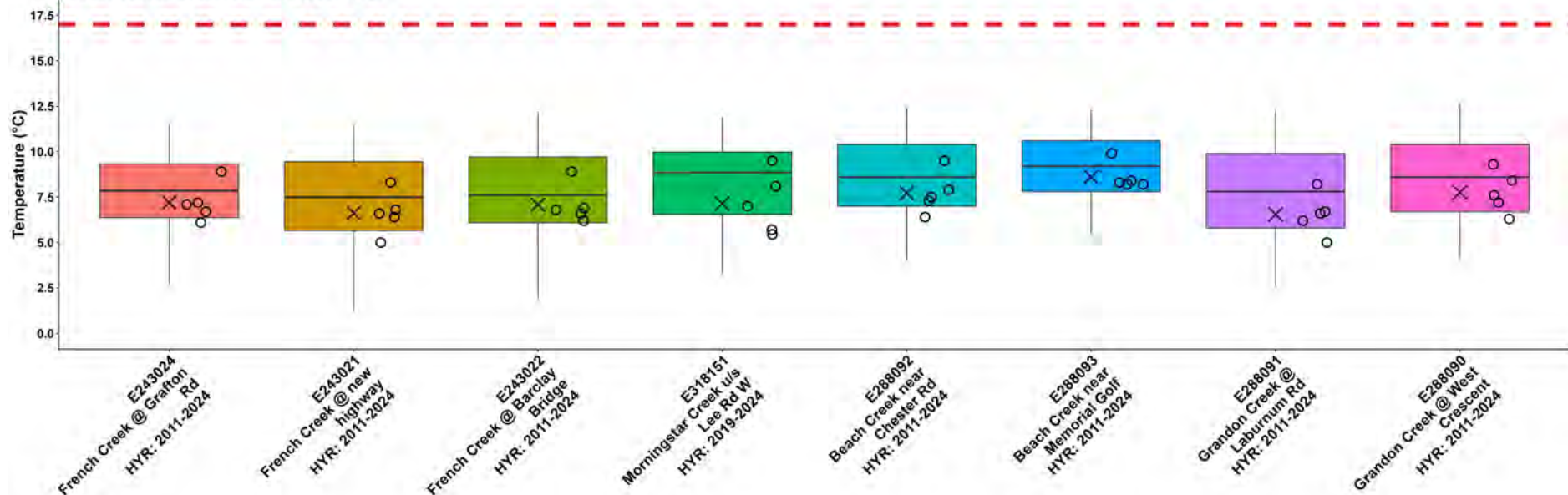
WR3: French Creek Summer Temperature



Note:
HYR: indicates the year range for which historical data were included for a sample location

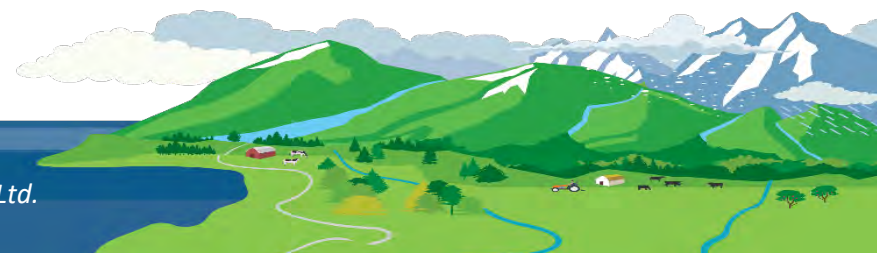


WR3: French Creek Fall Temperature

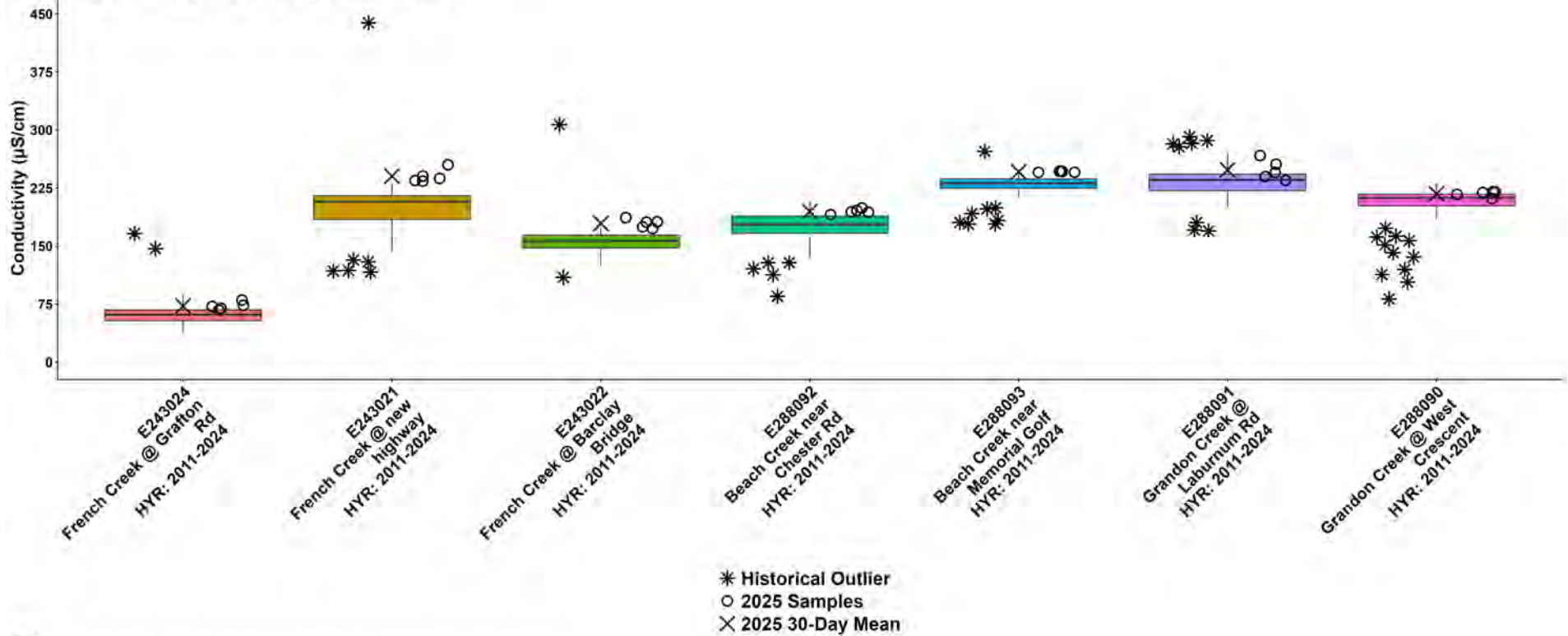


* Historical Outlier - Aquatic Life Guideline for Coho Rearing (17°C)
 ○ 2025 Samples
 X 2025 30-Day Mean

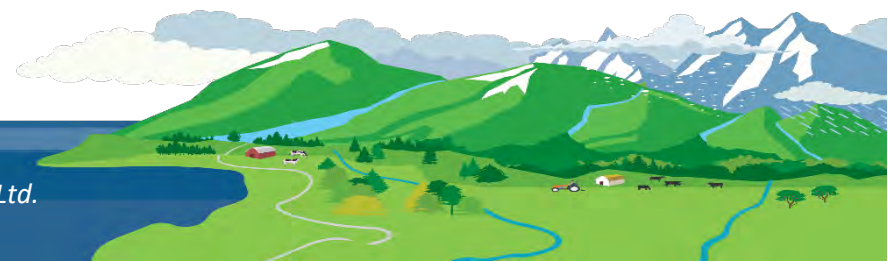
Note:
 HYR: indicates the year range for which historical data were included for a sample location.



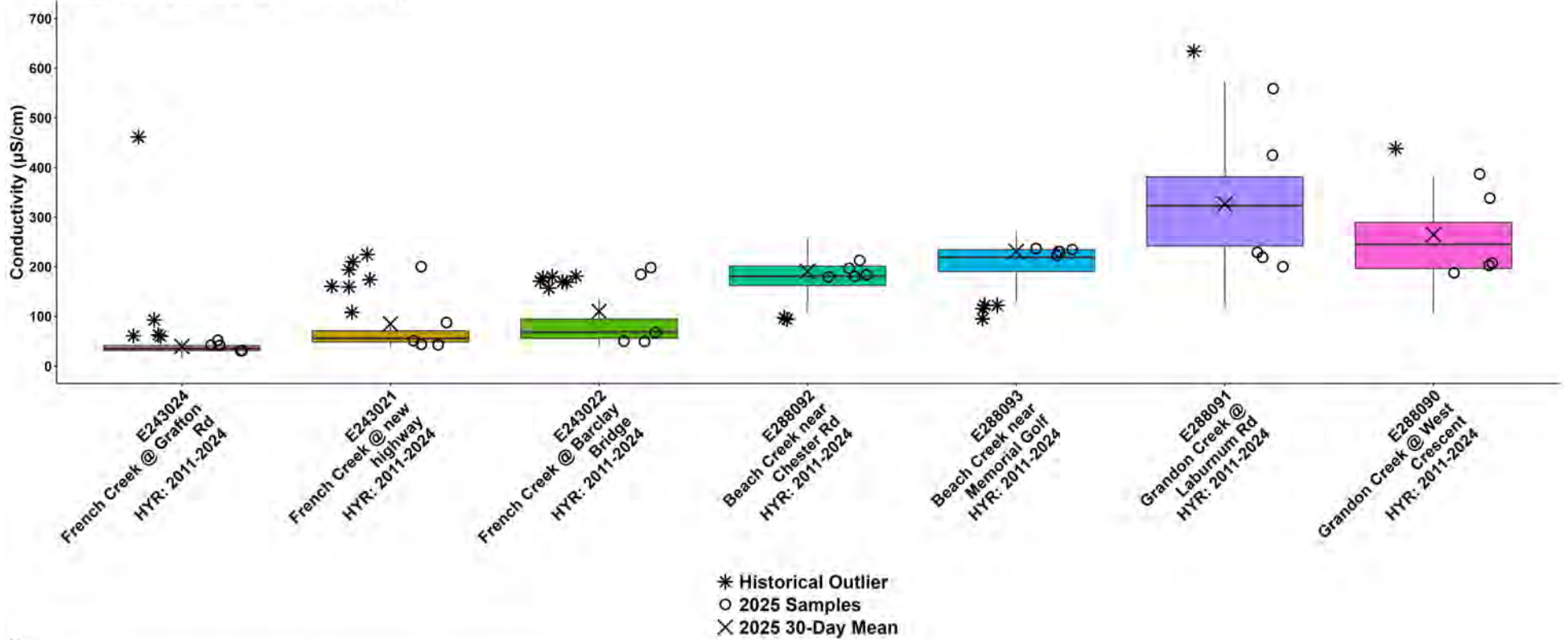
WR3: French Creek Summer Conductivity



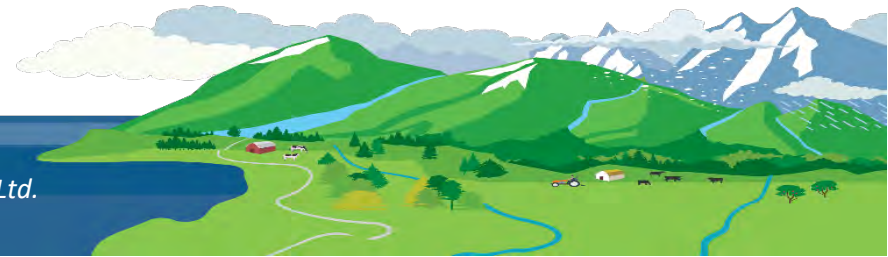
Note:
HYR: indicates the year range for which historical data were included for a sample location.

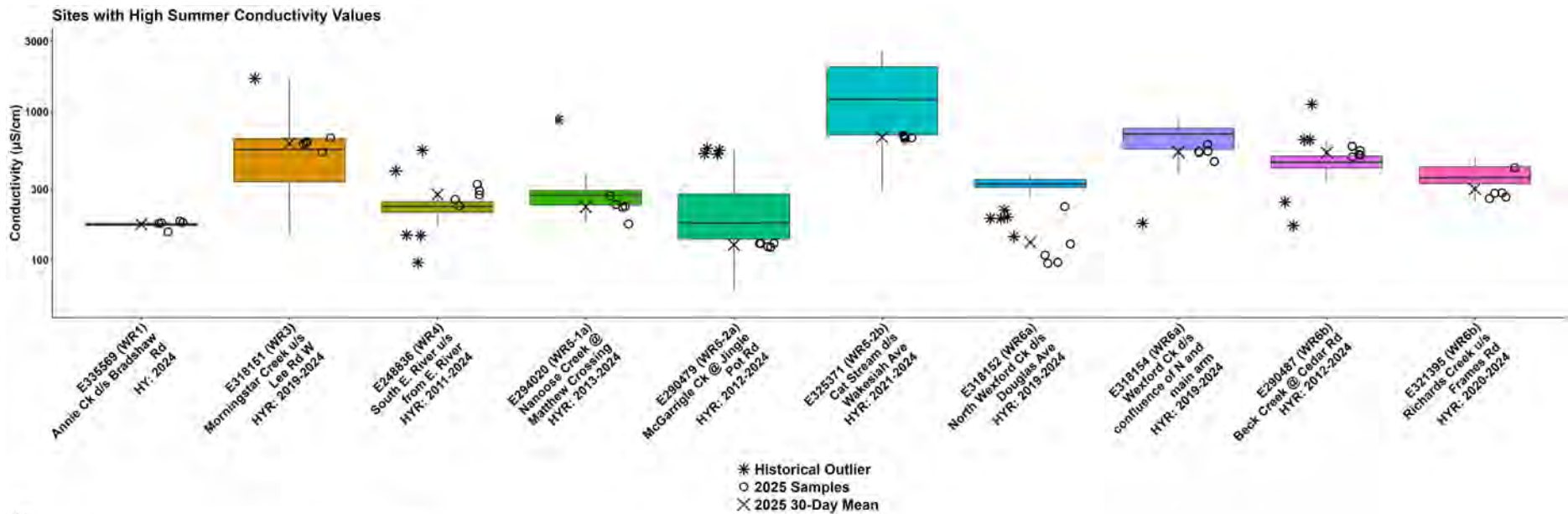


WR3: French Creek Fall Conductivity



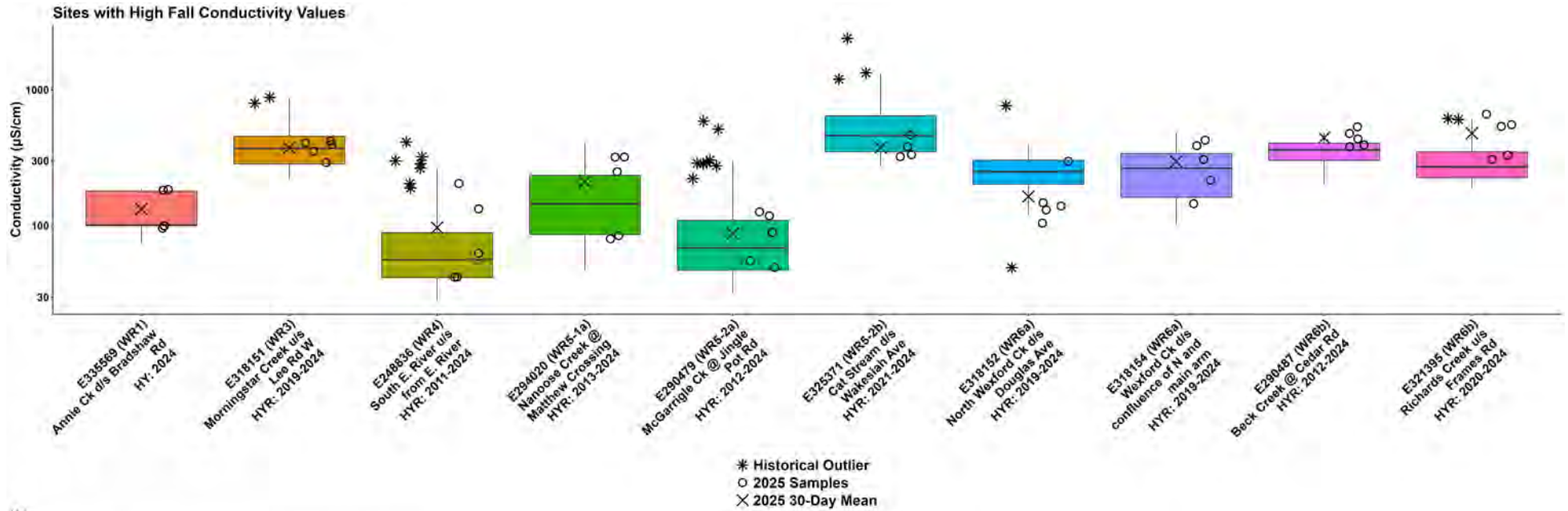
Note:
HYR: indicates the year range for which historical data were included for a sample location.



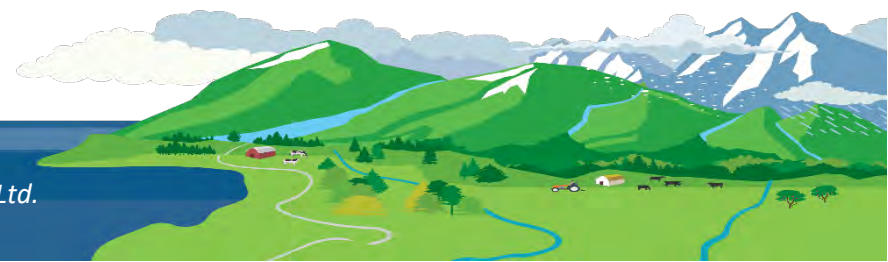


Note:
 HY: indicates the single year for which historical data was included for a sample location.
 HYR: indicates the year range for which historical data were included for a sample location.





Notes:
 HY: indicates the single year for which historical data was included for a sample location.
 HYR: indicates the year range for which historical data was included for a sample location.





Friends of French Creek Conservation Society
2025 Monitoring Sites

REGIONAL DISTRICT OF NANAIMO

Status	Community Park
Active	Regional Park
Not Active	
Watercourse (approximate location)	

2024 Air Photo

0 250 500 1,000 Meters

July 2025

N