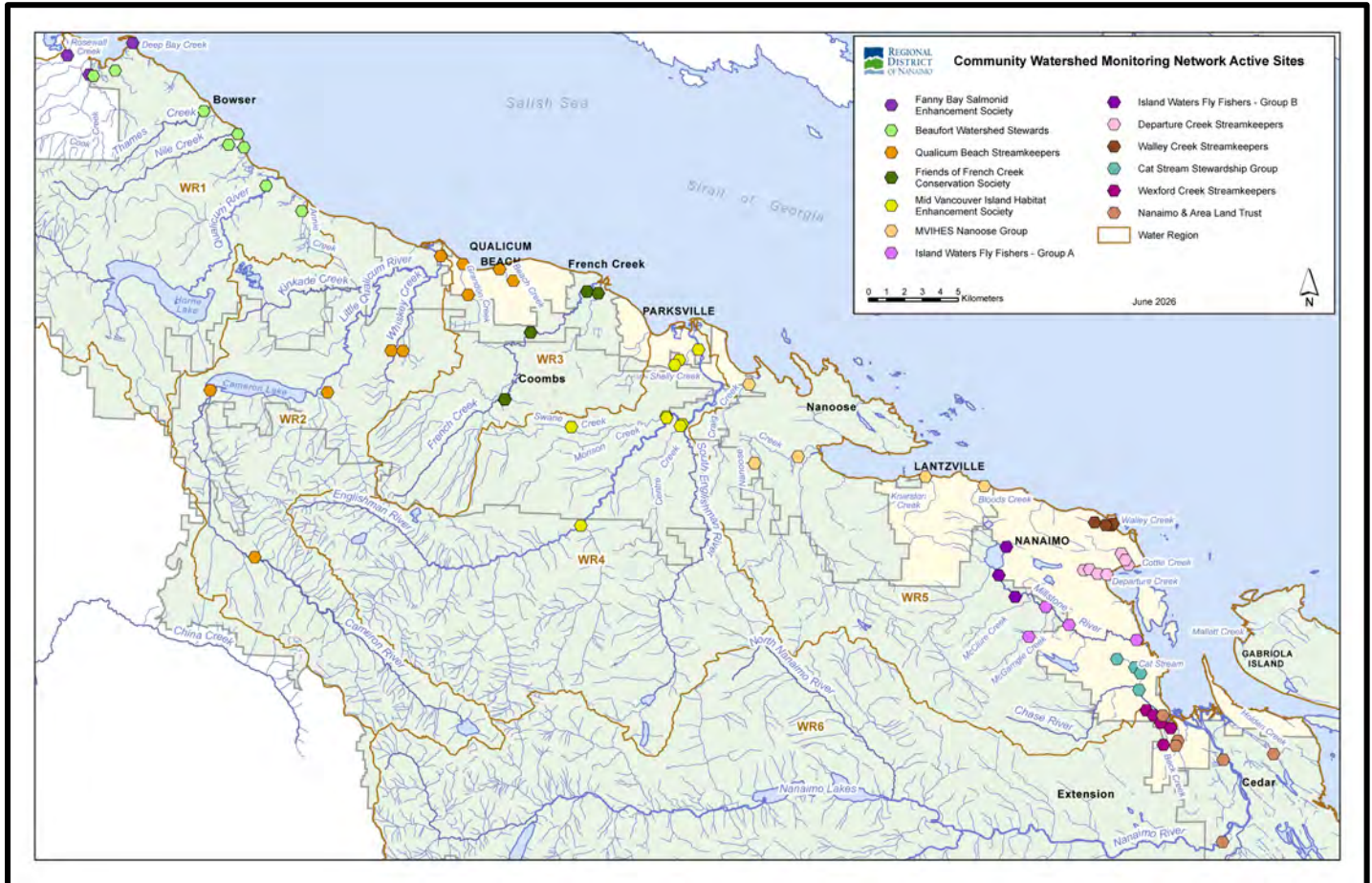


Community Watershed Monitoring Network 2025 Results by Water Region



Included in Water Region (WR) 2 package:

1. CWMN WR2 sample sites
2. How to interpret a box plot
3. Box Plot Comparison – 2025 data to previous years: *displayed by parameter (Turbidity, Dissolved Oxygen, Temperature, Conductivity) & sample period (summer, fall)*
4. QBS CWMN map of sample sites



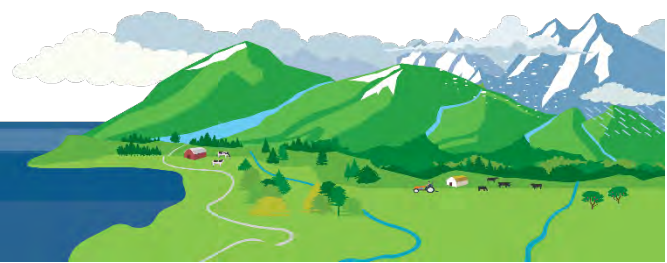
Water Region 2
sampled by:
**Qualicum Beach Streamkeepers
(QBS)**



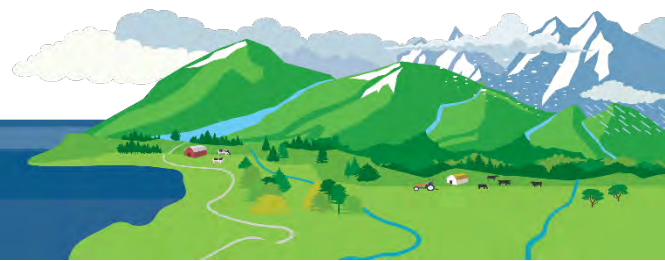
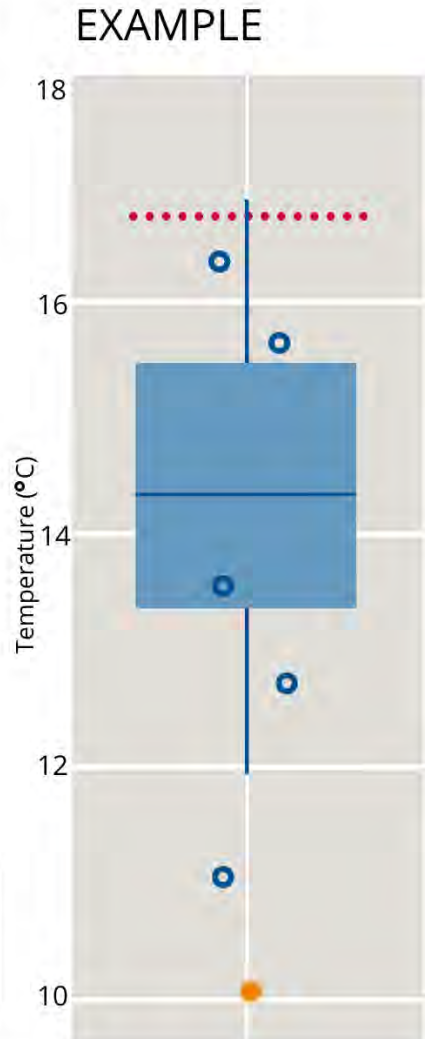
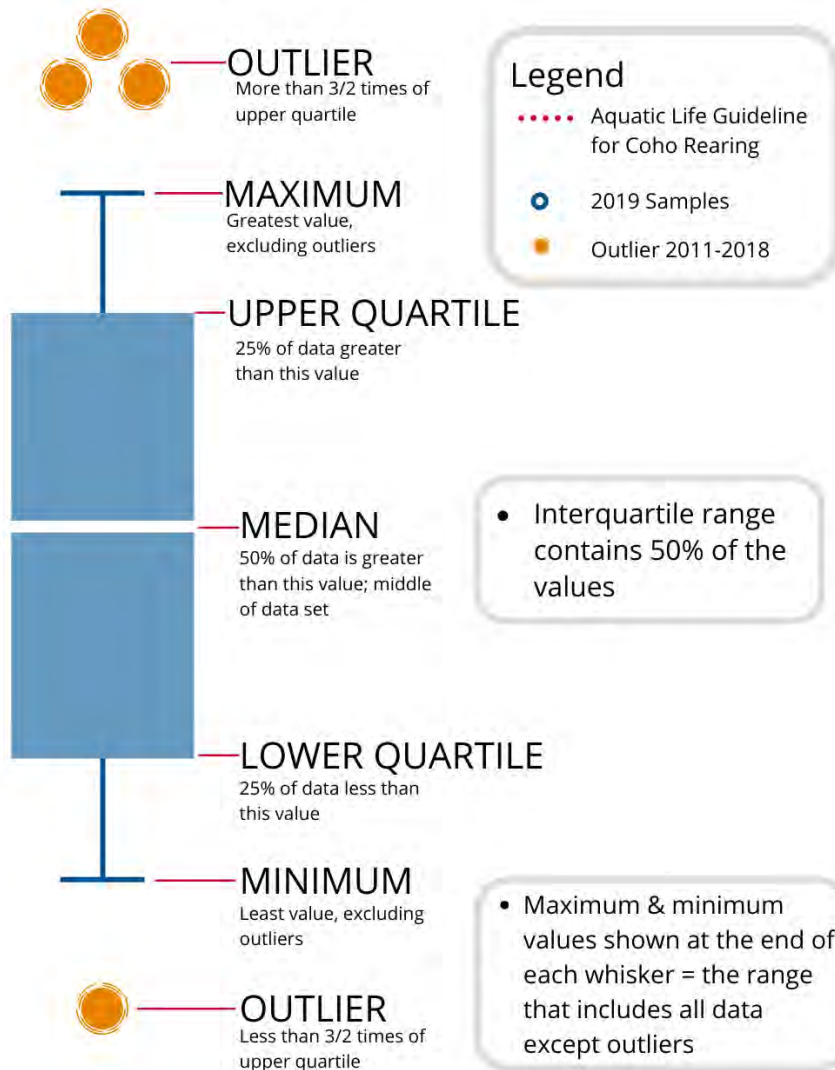
WR2 CWMN Sample Sites:

The table below shows the sites monitored by each of the streamkeeper organizations, as well as the number of years and which years a site was sampled. The number of years is important to keep in mind when interpreting the box plots as the plot for each site may contain a slightly different temporal range.

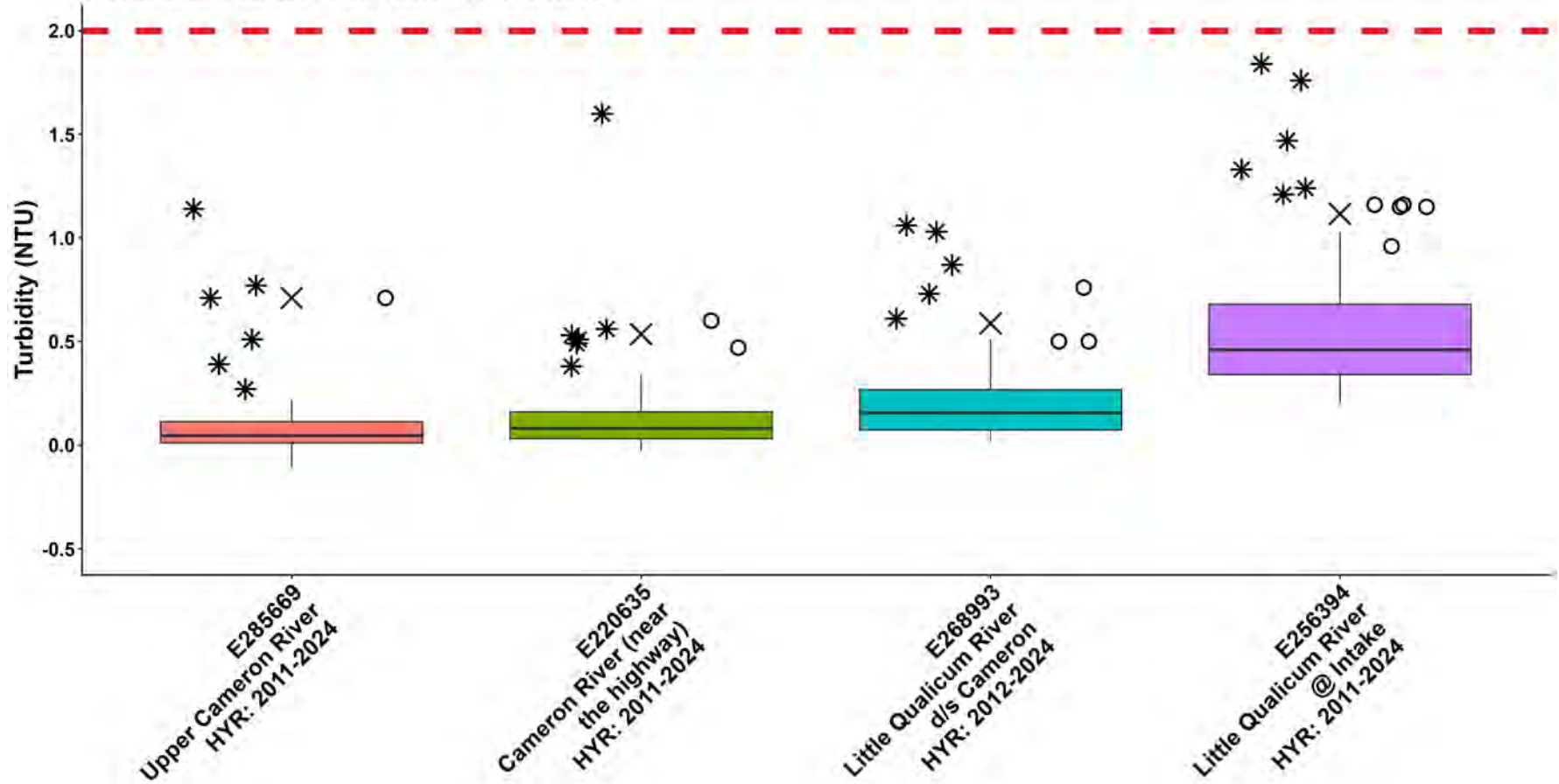
Group	EMS ID	Geographic Description	Total Years Sampled	Years Sampled
QBS	E285669	Upper Cameron River	15	2011 - present
QBS	E220635	Cameron River (near the highway, just u/s of Cathedral Grove)	15	2011 - present
QBS	E268993	Little Qualicum River 1.2 km d/s Cameron Lake	15	2011 - present
QBS	E287697	Whiskey Creek on Hwy 4, TB Ave Save on Gas	15	2011 - present
QBS	E256394	Little Qualicum River at Intake	15	2011 - present
QBS	E318150	Harris Creek on north/downstream side of Hwy 4	7	2019 - present



How to Interpret a Box Plot:

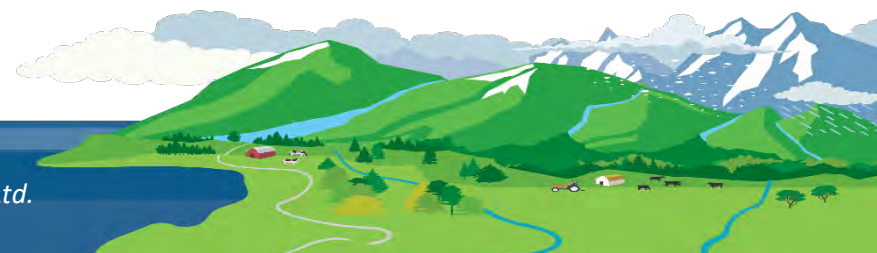


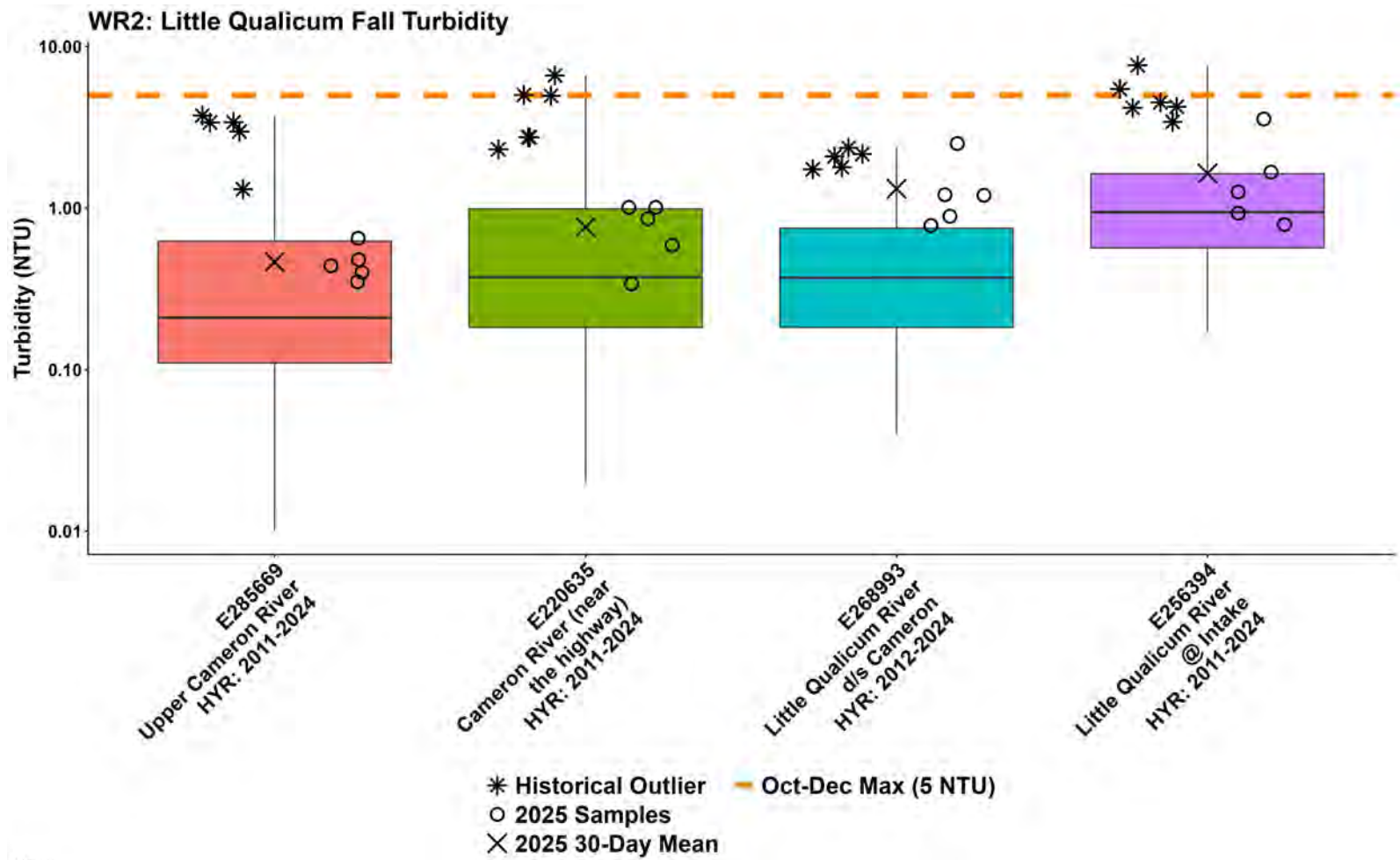
WR2: Little Qualicum Summer Turbidity



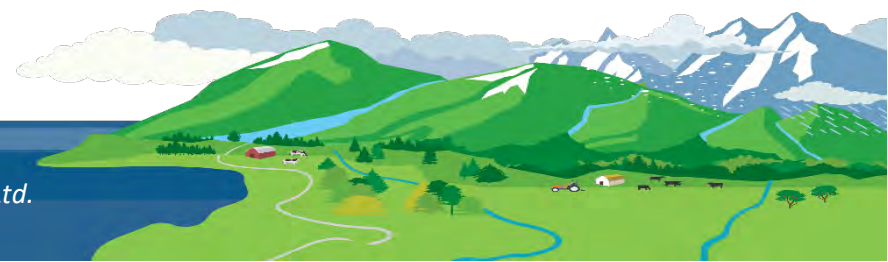
* Historical Outlier - Jan-Sept Max (2 NTU)
 O 2025 Samples
 X 2025 30-Day Mean

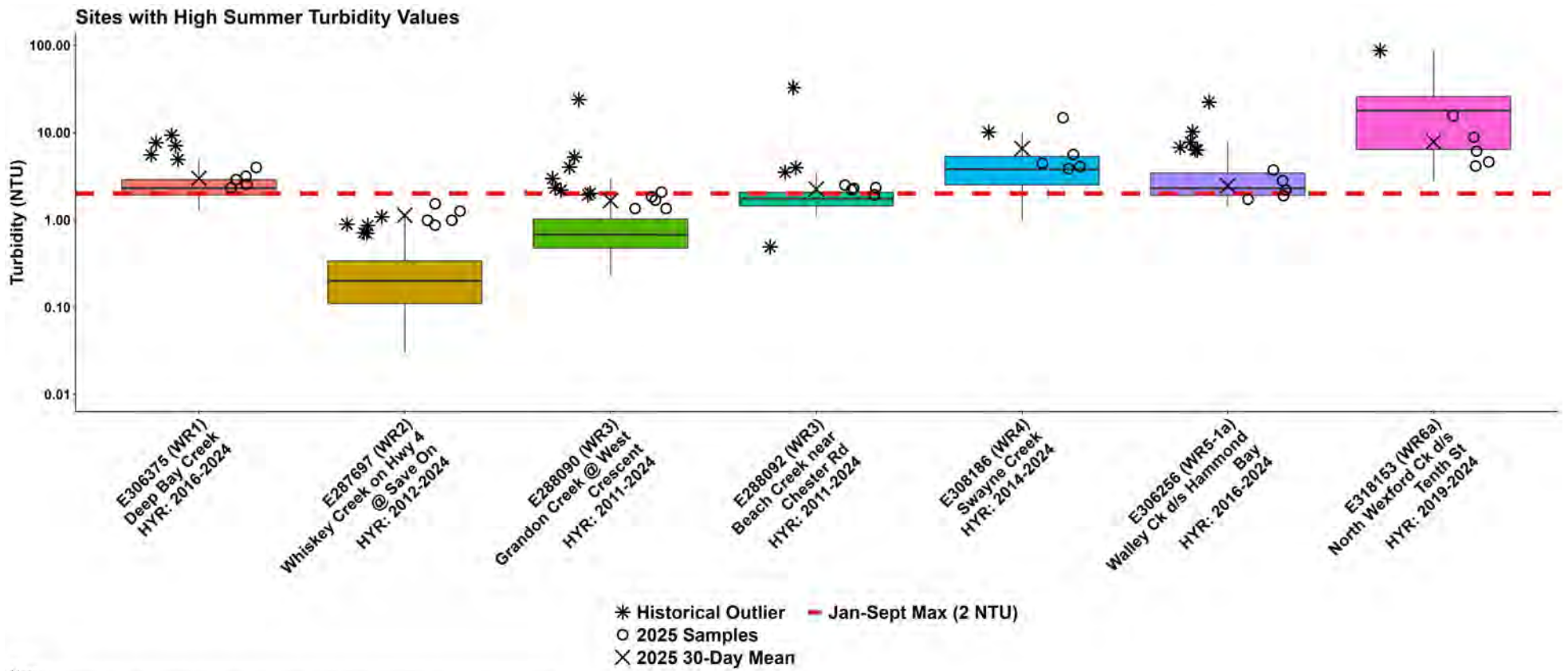
Note: HYR: indicates the year range for which historical data were included for a sample location.



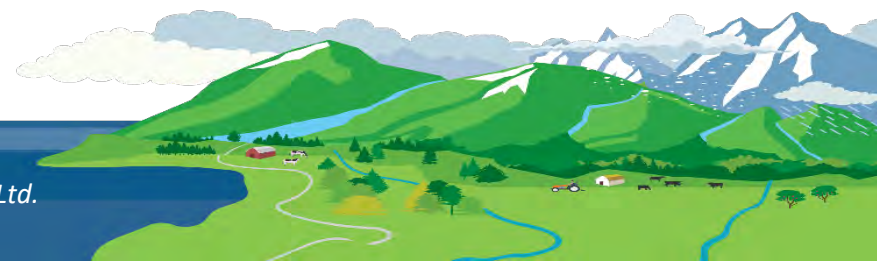


Note:
HYR: indicates the year range for which historical data were included for a sample location.

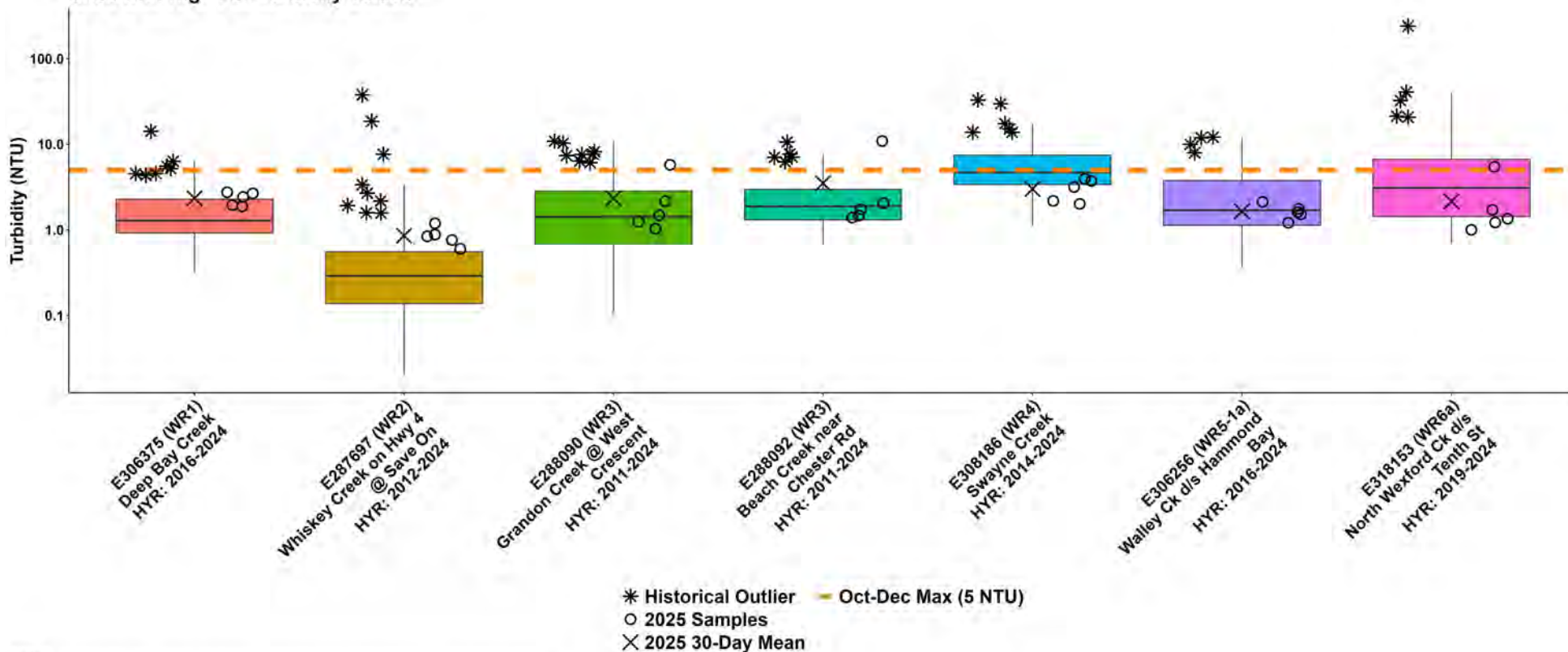




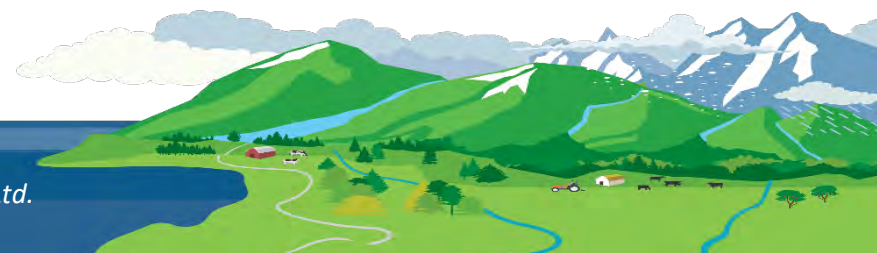
Note:
 HYR: indicates the year range for which historical data were included for a sample location.



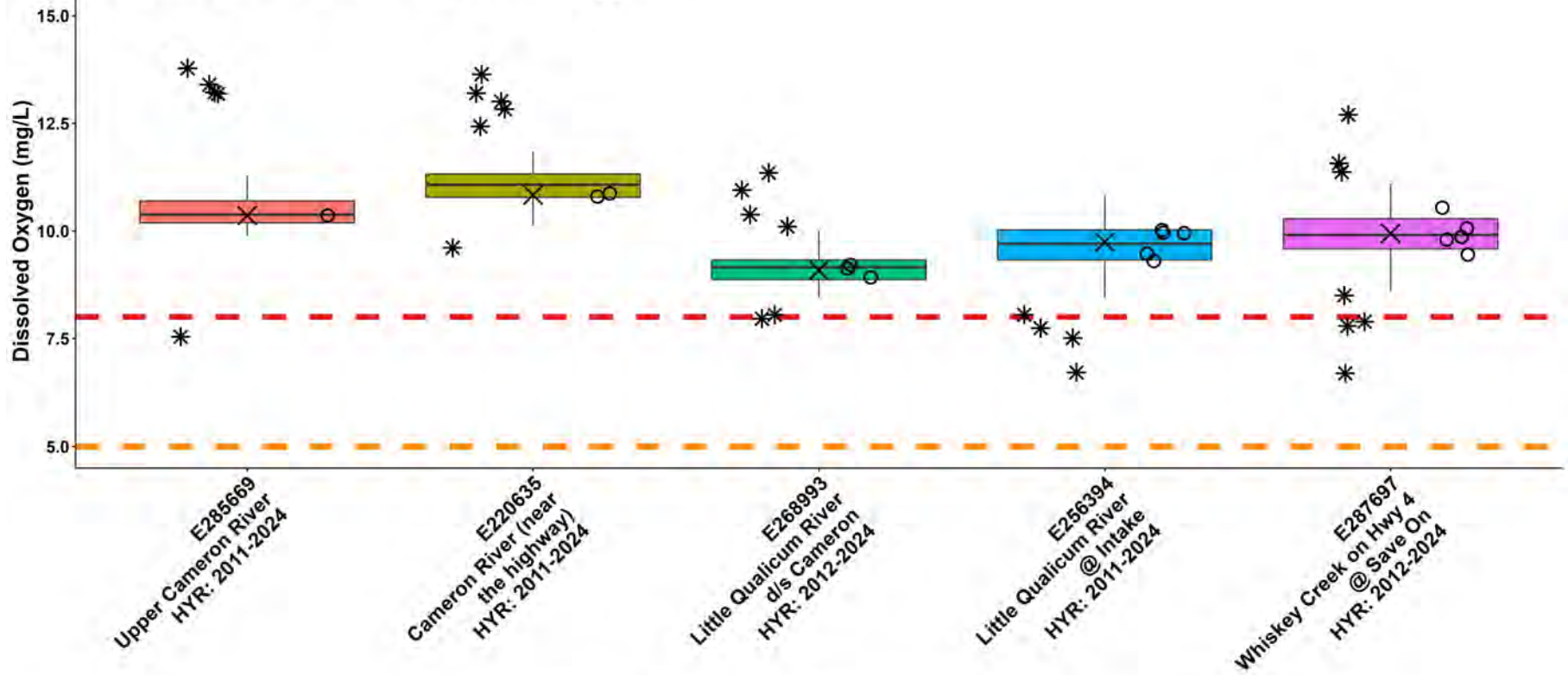
Sites with High Fall Turbidity Values



Note:
 HYR: indicates the year range for which historical data were included for a sample location.

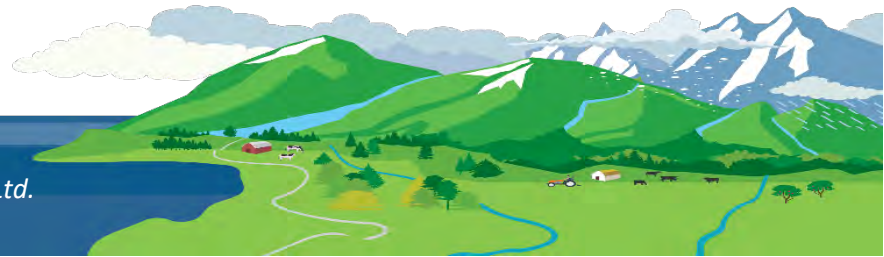


WR2: Little Qualicum Summer Dissolved Oxygen

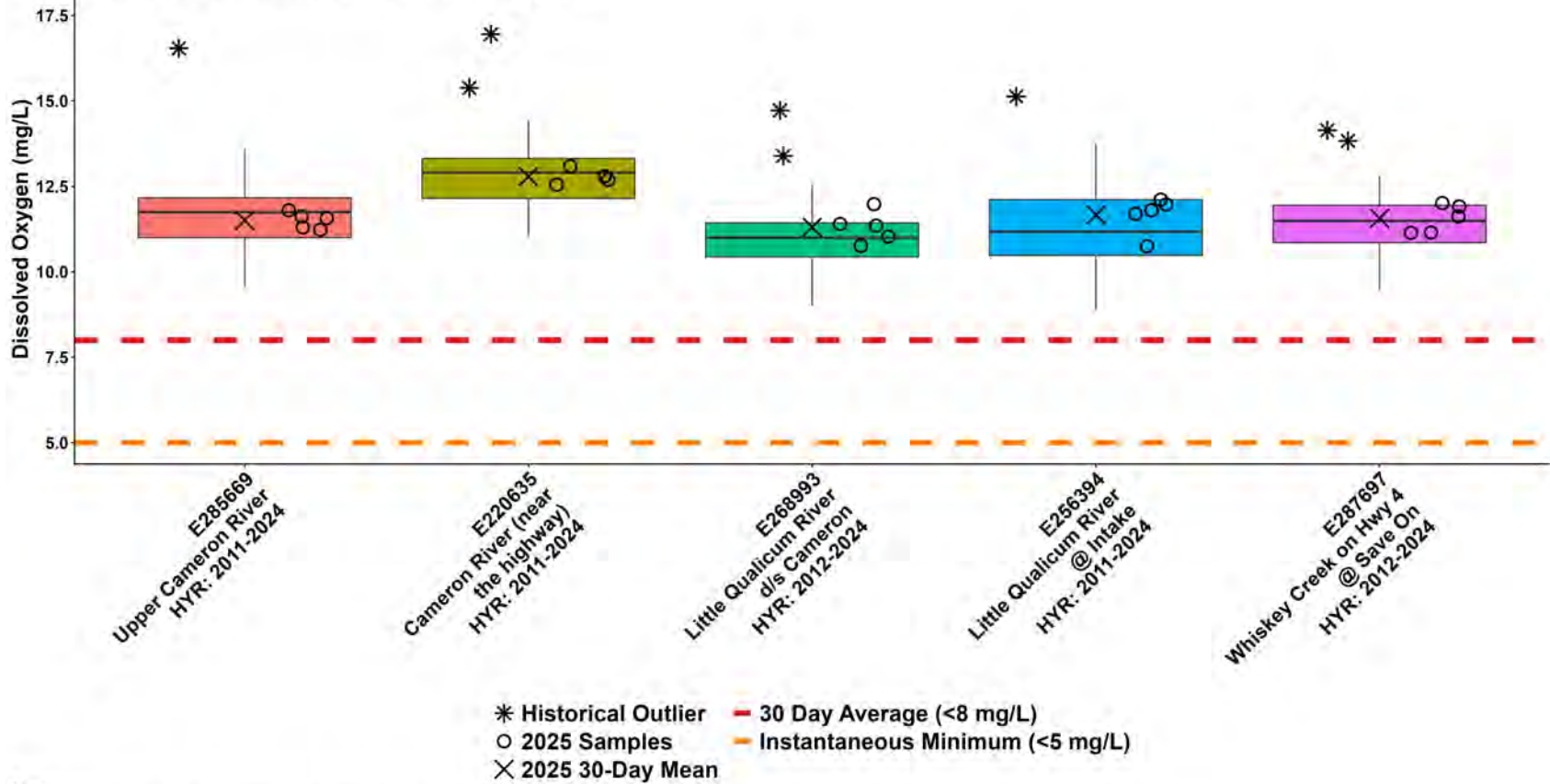


- * Historical Outlier
- 2025 Samples
- × 2025 30-Day Mean
- - - 30 Day Average (<8 mg/L)
- - - Instantaneous Minimum (<5 mg/L)

Note:
HYR: Indicates the year range for which historical data were included for a sample location.



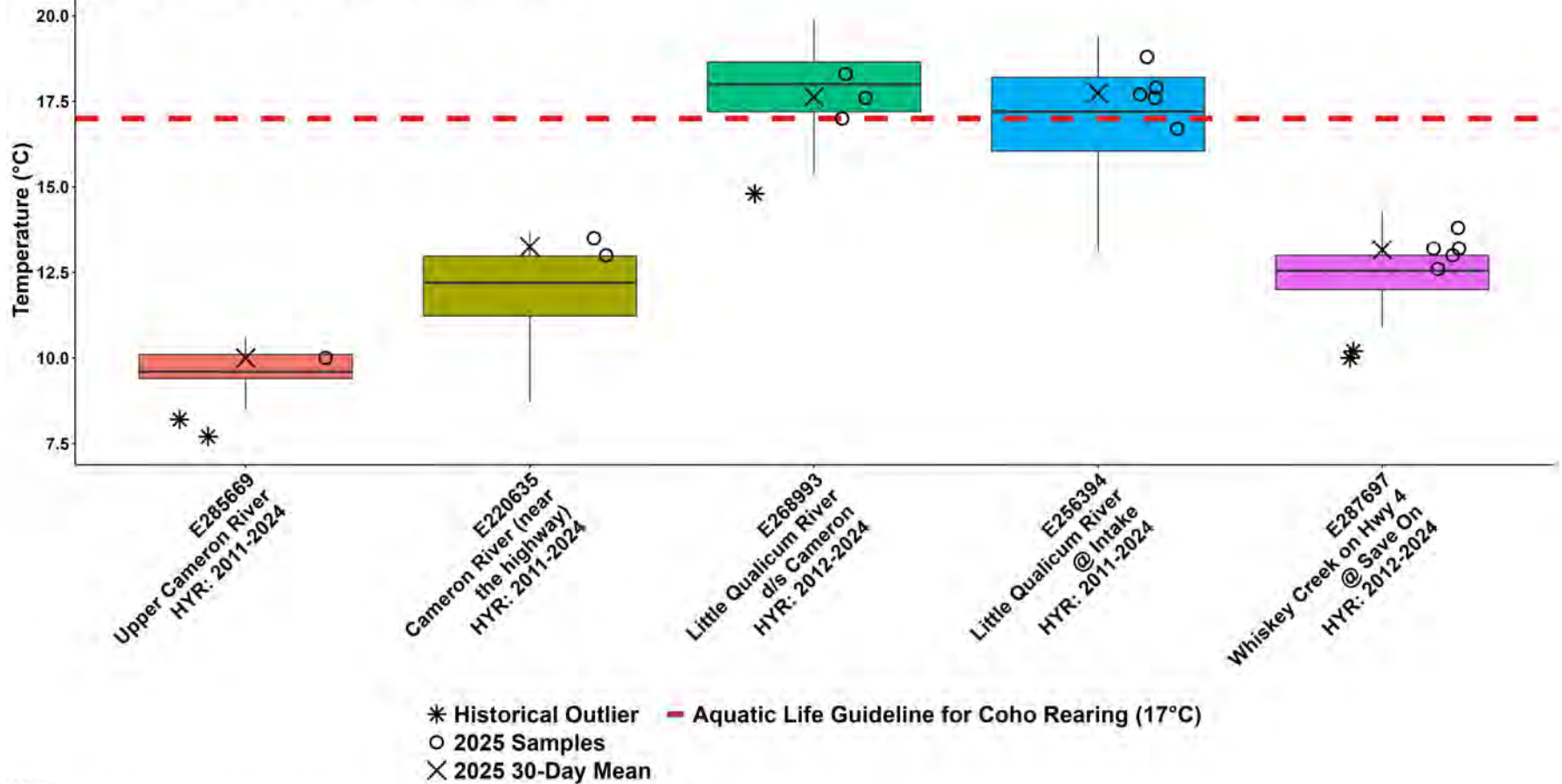
WR2: Little Qualicum Fall Dissolved Oxygen



Note:
HYR: Indicates the year range for which historical data were included for a sample location.



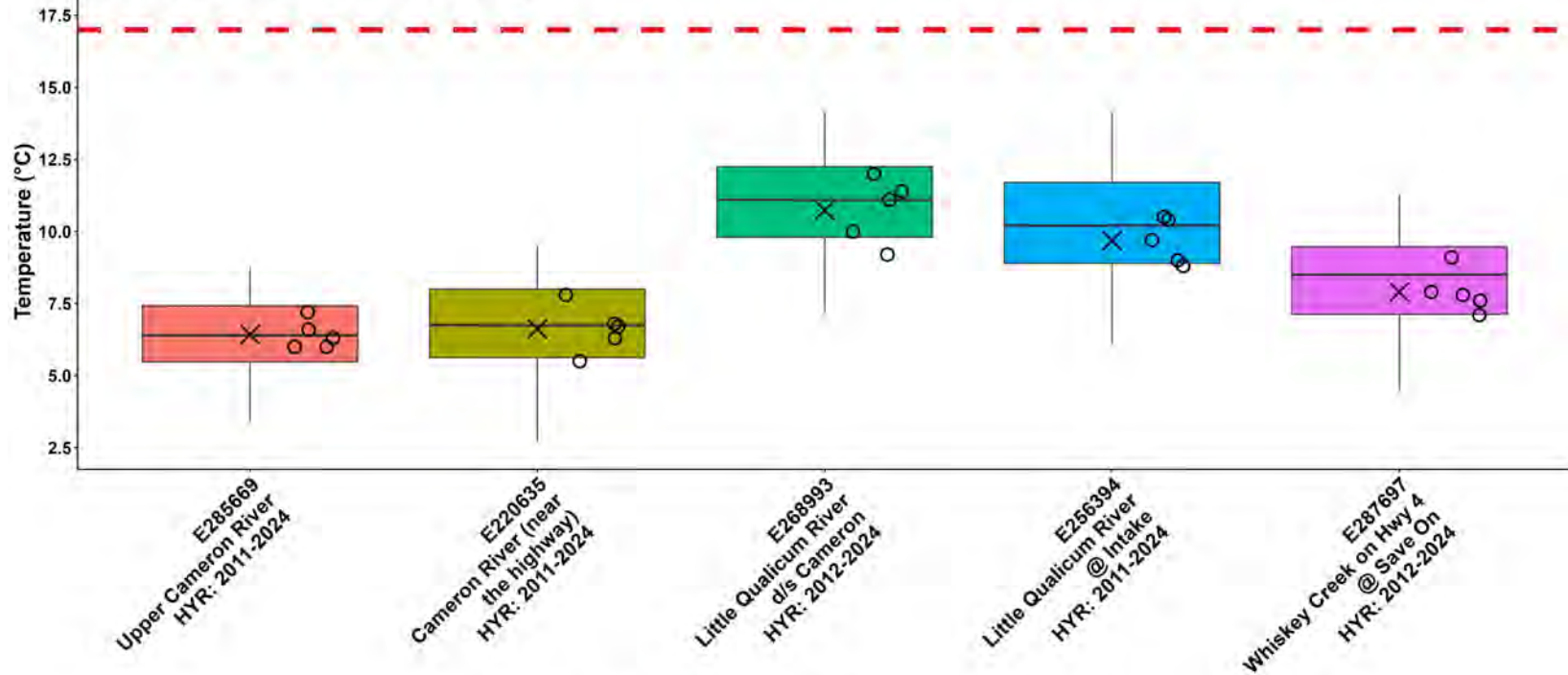
WR2: Little Qualicum Summer Temperature



Note:
HYR: Indicates the year range for which historical data were included for a sample location.

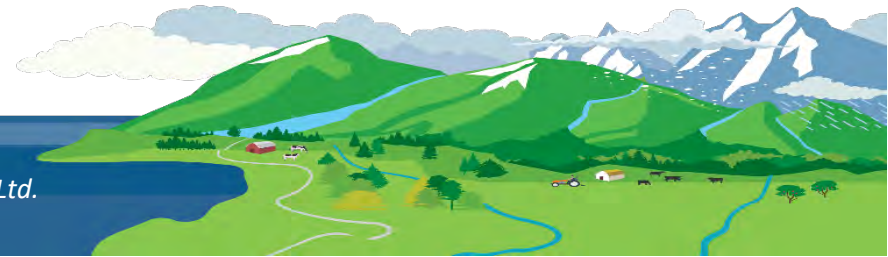


WR2: Little Qualicum Fall Temperature

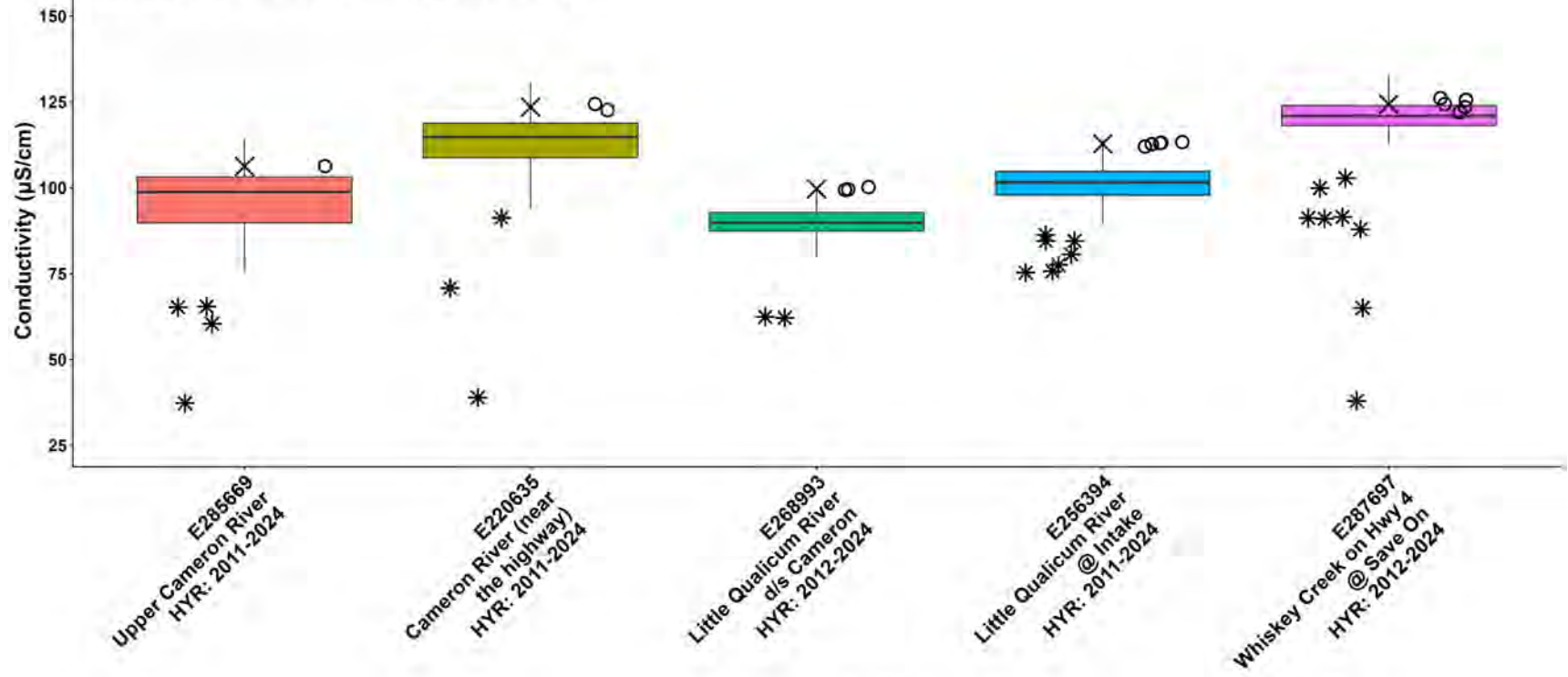


* Historical Outlier - Aquatic Life Guideline for Coho Rearing (17°C)
 ○ 2025 Samples
 × 2025 30-Day Mean

Note:
 HYR: indicates the year range for which historical data were included for a sample location.

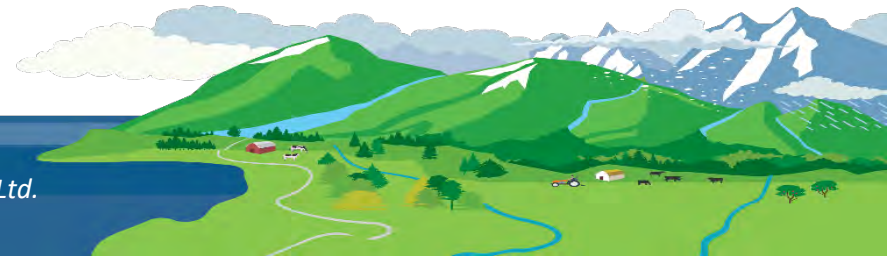


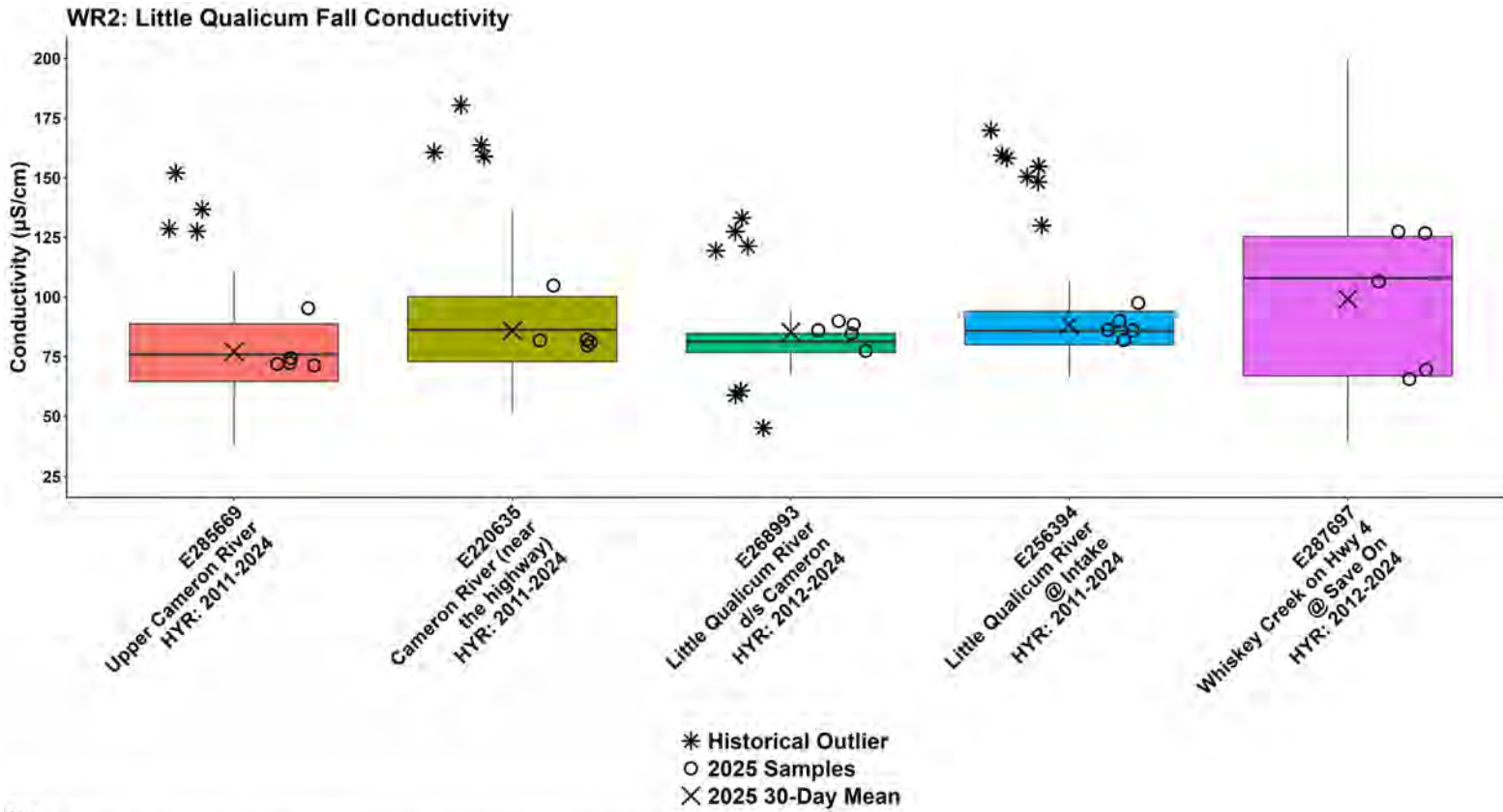
WR2: Little Qualicum Summer Conductivity



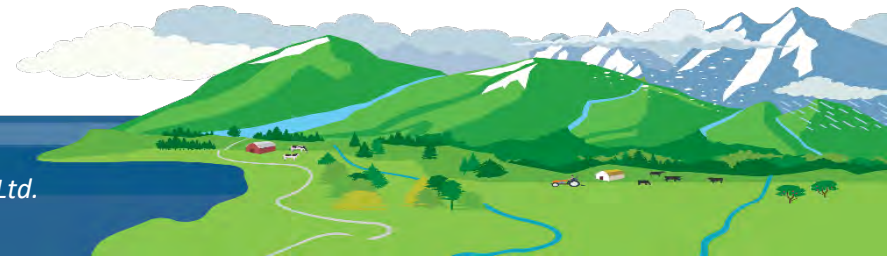
* Historical Outlier
 ○ 2025 Samples
 × 2025 30-Day Mean

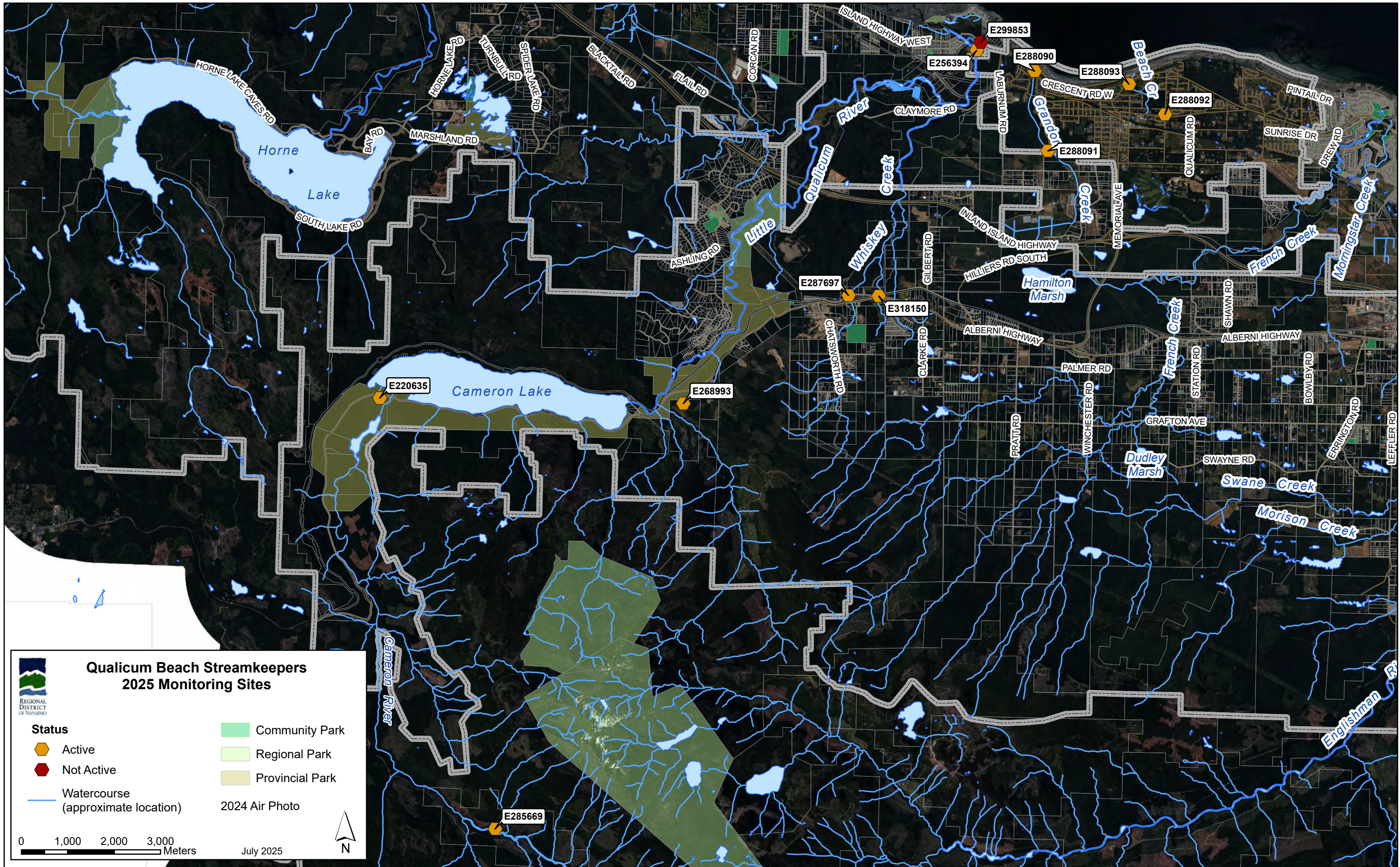
Note:
 HYR: indicates the year range for which historical data were included for a sample location.





Note:
HYR: indicates the year range for which historical data were included for a sample location.

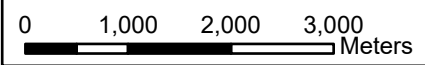




**Qualicum Beach Streamkeepers
2025 Monitoring Sites**

- | | | | |
|--|---------------------------------------|--|-----------------|
| | Active | | Community Park |
| | Not Active | | Regional Park |
| | Watercourse
(approximate location) | | Provincial Park |

2024 Air Photo



July 2025

