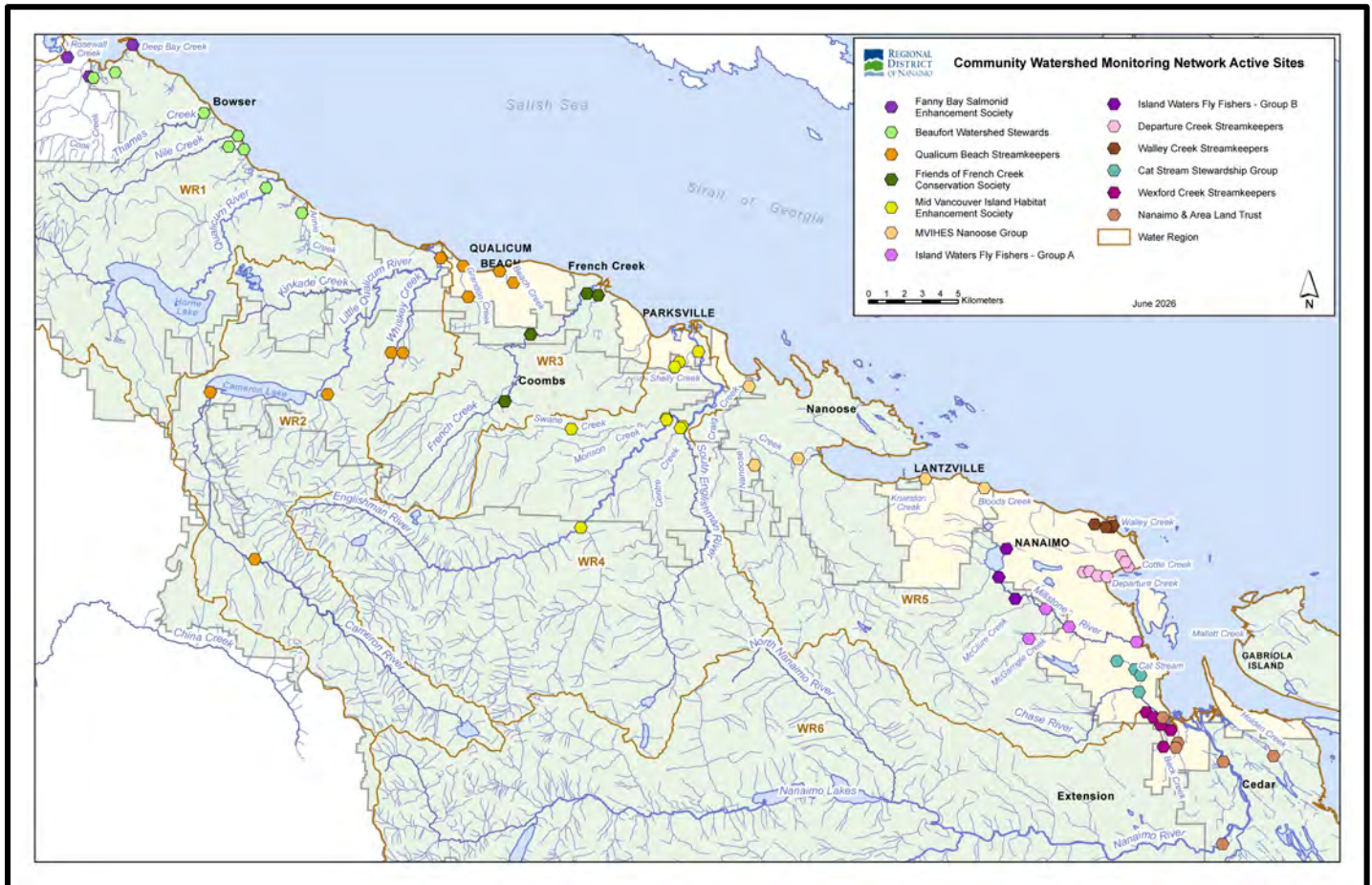


# Community Watershed Monitoring Network 2025 Results by Water Region



Included in Water Region (WR) 1 package:

1. CWMN WR1 sample sites
2. How to interpret a box plot
3. Box Plot Comparison – 2025 data to previous years: *displayed by parameter (Turbidity, Dissolved Oxygen, Temperature, Conductivity) & sample period (summer, fall)*
4. FBSES CWMN map of sample sites
5. BWS CWMN map of sample sites



Water Region 1  
sampled by:

**Fanny Bay Salmonid  
Enhancement Society (FBSES)  
&  
Beaufort Watershed  
Stewards (BWS)**



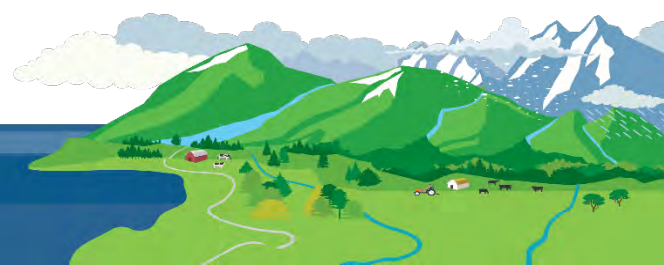
## WR1 CWMN Sample Sites:

The table below shows the sites monitored by each of the streamkeeper organizations, as well as the number of years and which years a site was sampled. The number of years is important to keep in mind when interpreting the box plots as the plot for each site may contain a slightly different temporal range.

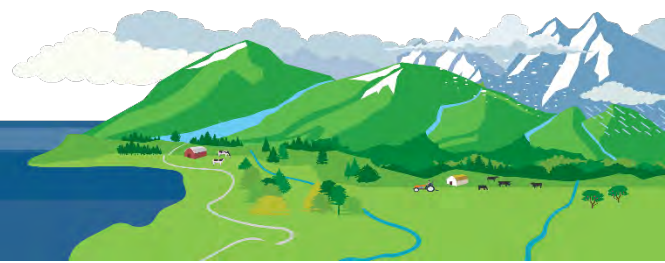
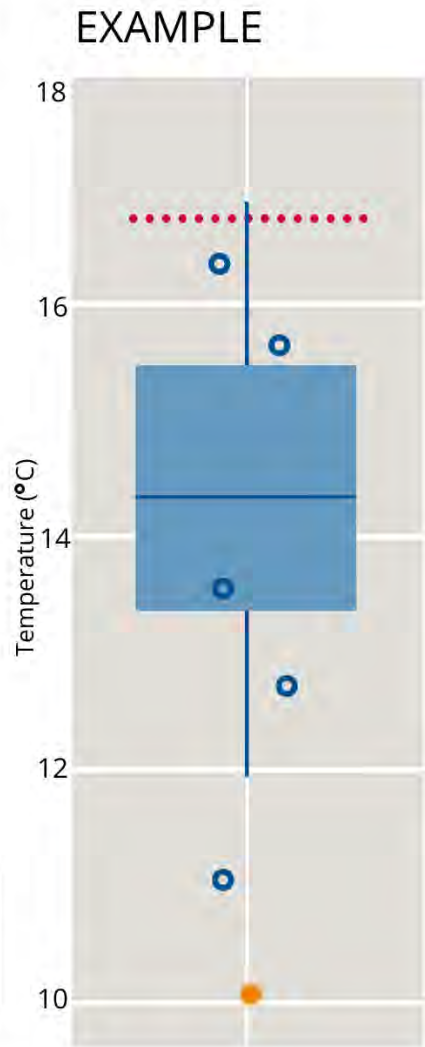
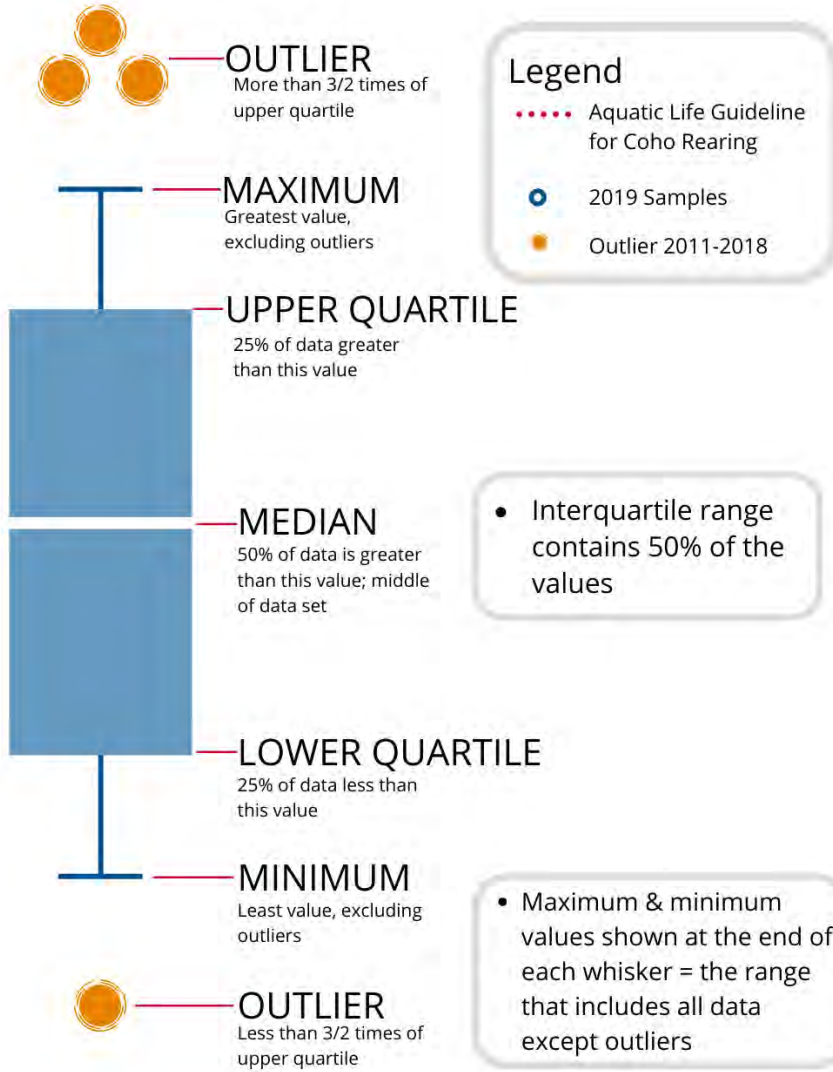
Group	EMS ID	Geographic Description	Total Years Sampled	Years Sampled
FBSES	E306374	Rosewall Creek @ Rosewall Creek Park	10	2016 - present
FBSES	E309086	Cook Creek at Old Island Hwy Connector	9	2017 - present
FBSES	E306375	Deep Bay Creek	10	2016 - present
BWS	E335564	Chef Creek u/s Hwy 19A	2	2024 - present
BWS	E335565	Sandy Creek u/s Hwy 19A	2	2024 - present
BWS	E335567	Nash Creek at Bridge 15, Lighthouse Country Regional Trail	2	2024 - present
BWS	E335568	Hunts Creek Trail at 0km	2	2024 - present
BWS	E335569	Annie Creek d/s Bradshaw Rd	2	2024 - present
BWS	E335570	Nash Creek d/s Hwy 19A	2	2024 - present
BWS	E286549	Thames Creek 400 m u/s Hwy 19A	11	2011 - present*
BWS	E286553	Nile Creek @ Rosepark Rd (50m u/s Old Island Hwy)	14	2011 - present^

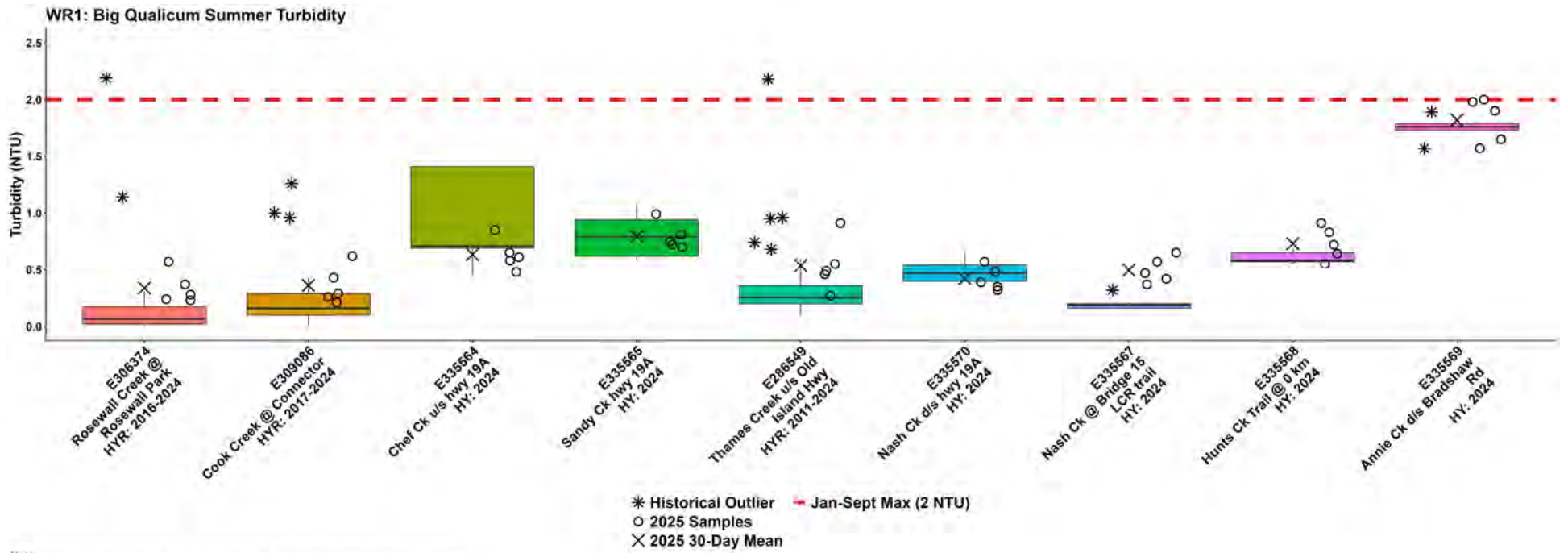
*WR 1 notes for number of years sampled: \*2014-2015, 2019, 2022 not monitored*

*^2016 not monitored*

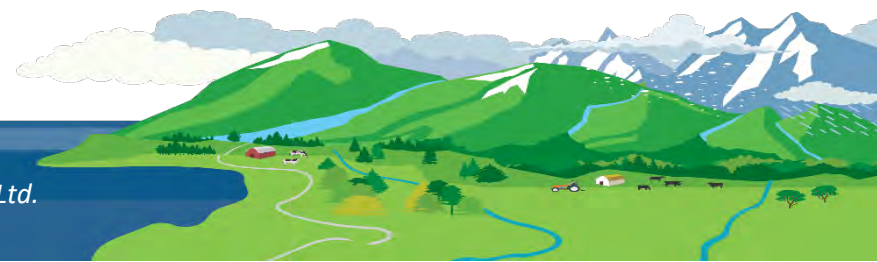


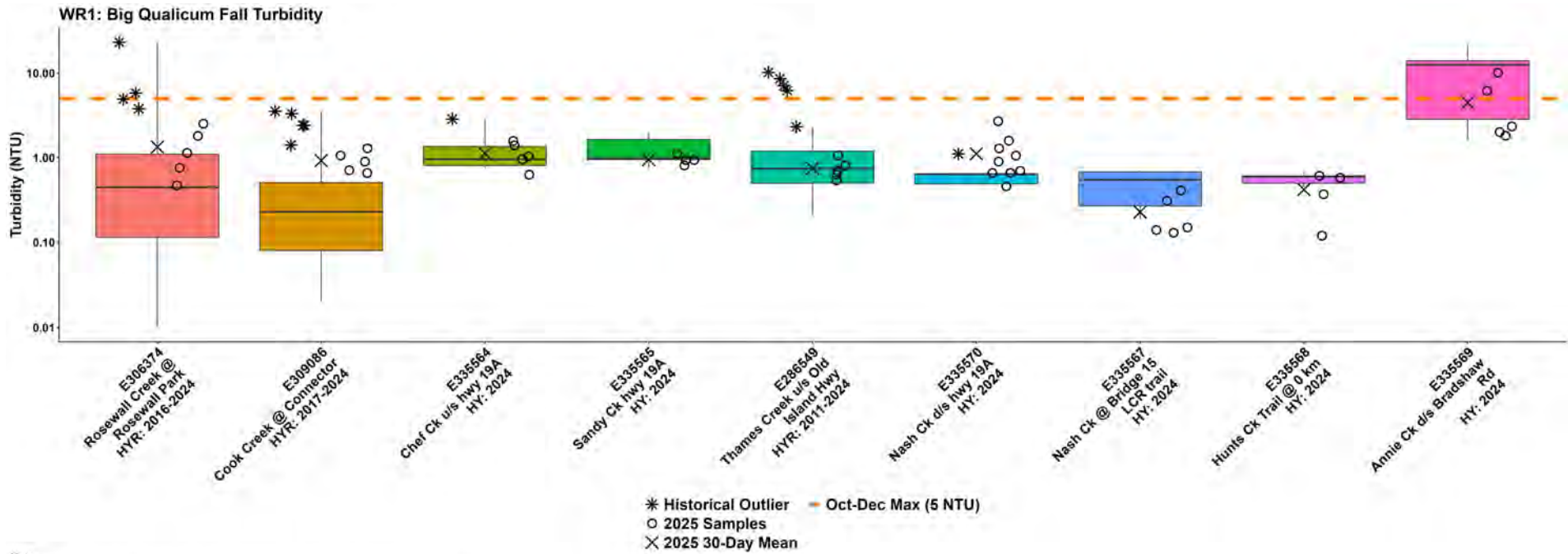
# How to Interpret a Box Plot:



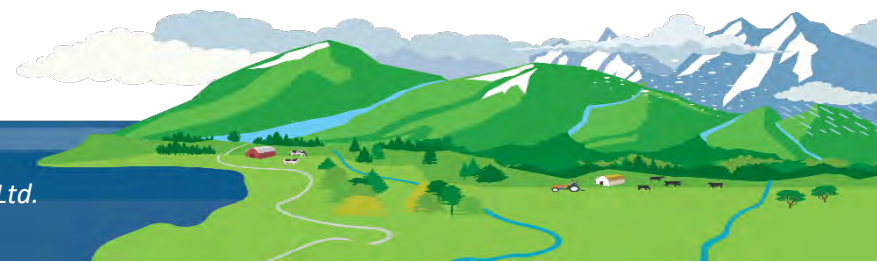


Note:  
 HY: indicates the single year for which historical data was included for a sample location  
 HYR: indicates the year range for which historical data were included for a sample location

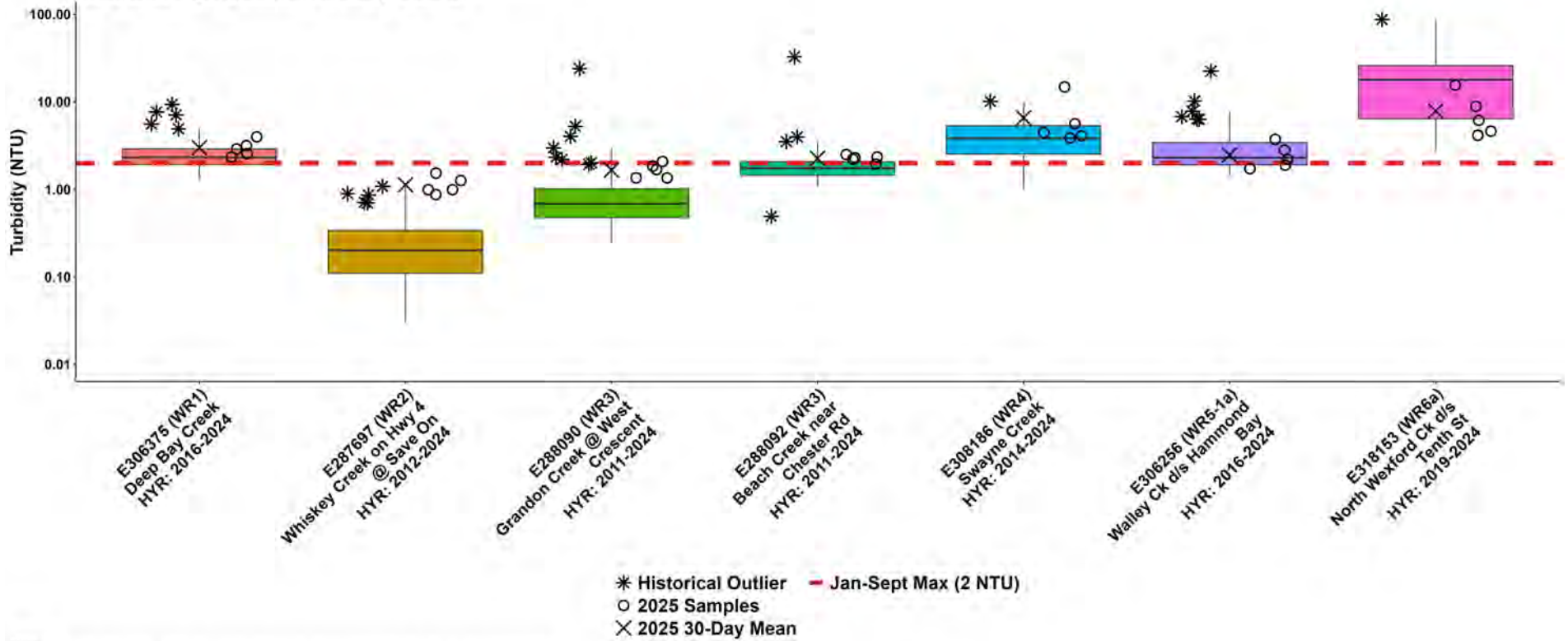




Note:  
 HY: indicates the single year for which historical data was included for a sample location.  
 HYR: indicates the year range for which historical data were included for a sample location.

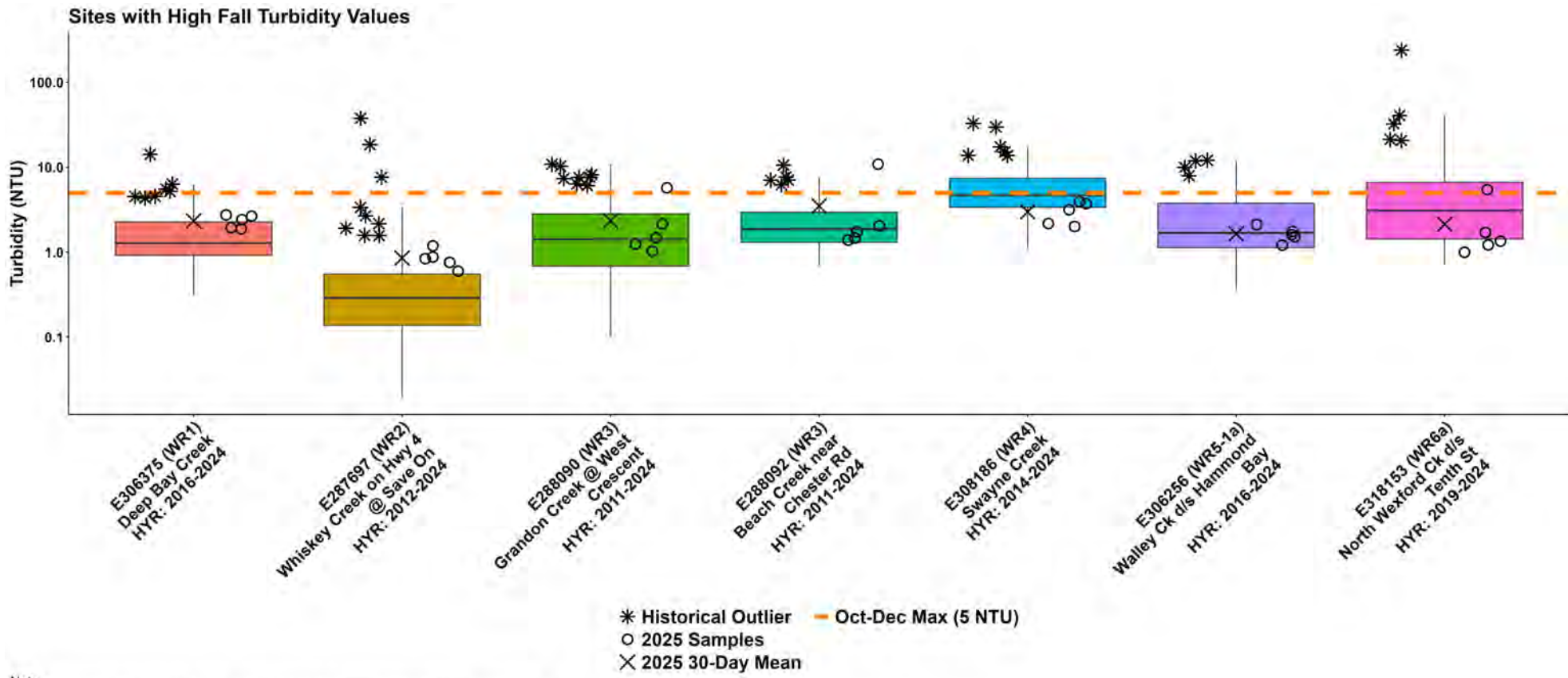


### Sites with High Summer Turbidity Values

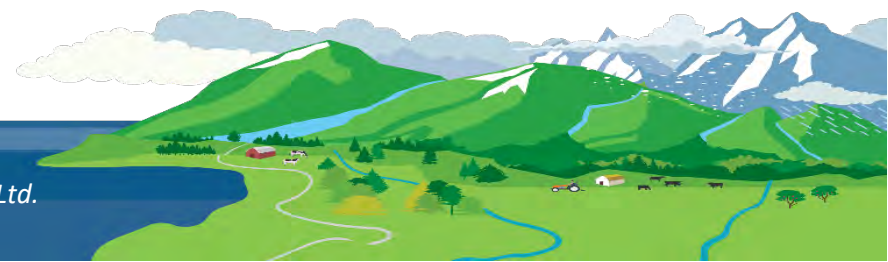


Note:  
HYR: indicates the year range for which historical data were included for a sample location

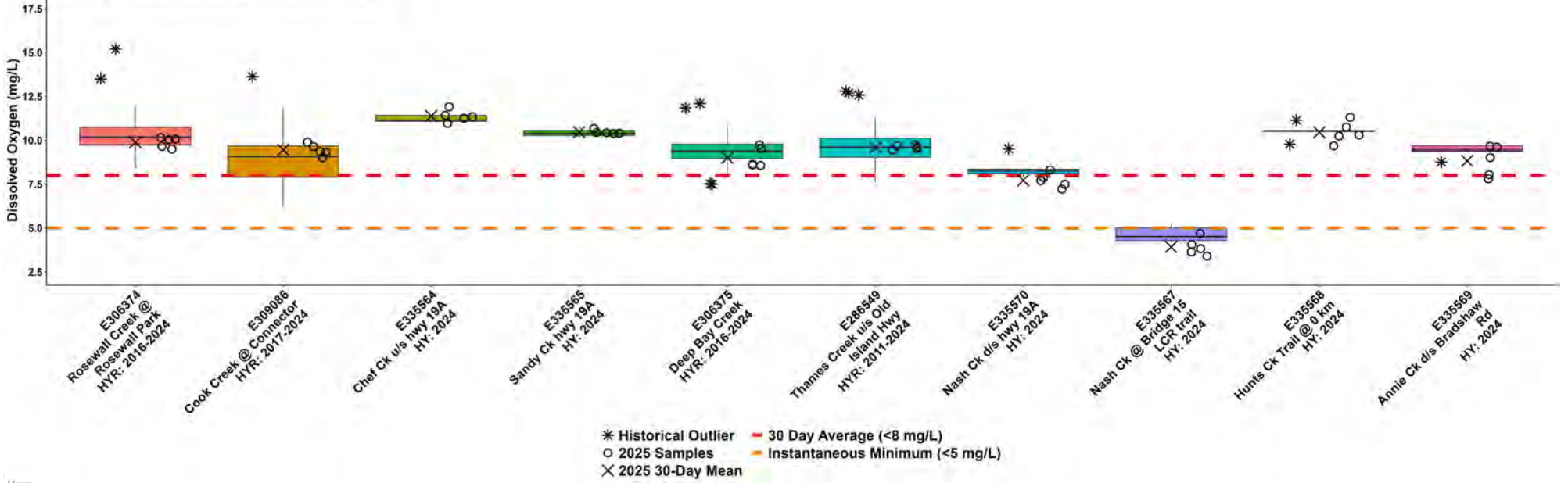




Note:  
HYR: indicates the year range for which historical data were included for a sample location.



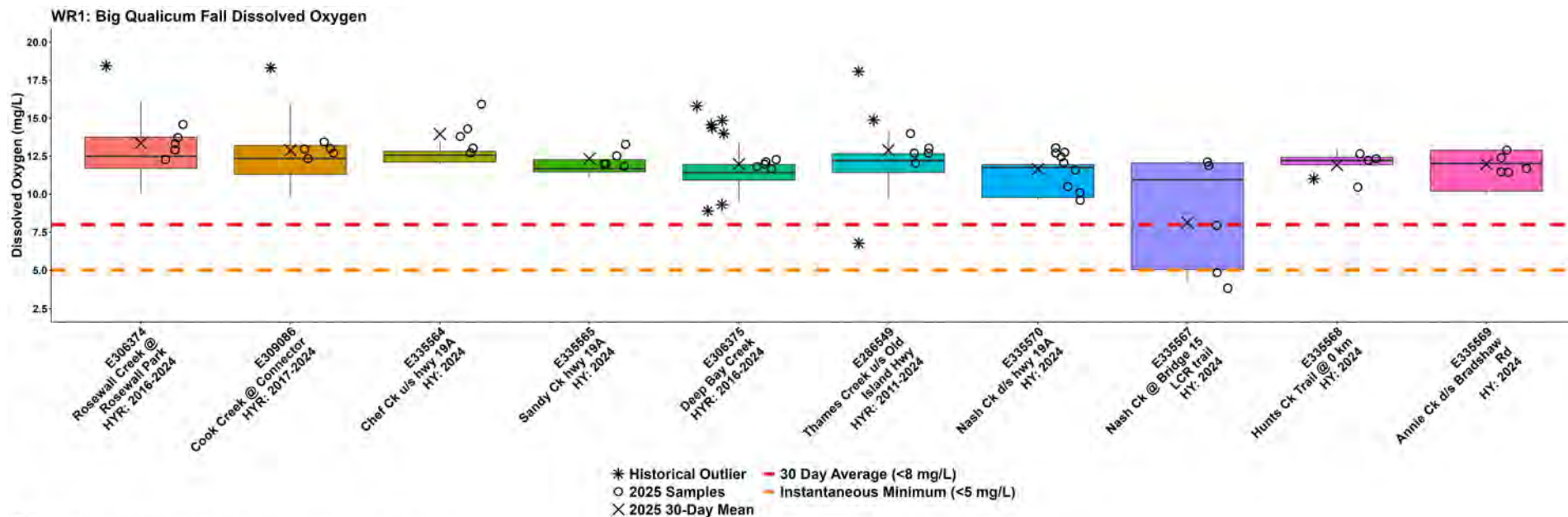
WR1: Big Qualicum Summer Dissolved Oxygen



Note:  
 HY: indicates the single year for which historical data was included for a sample location.  
 HYR: indicates the year range for which historical data were included for a sample location.

\* Historical Outlier    - 30 Day Average (<8 mg/L)  
 O 2025 Samples        - Instantaneous Minimum (<5 mg/L)  
 X 2025 30-Day Mean

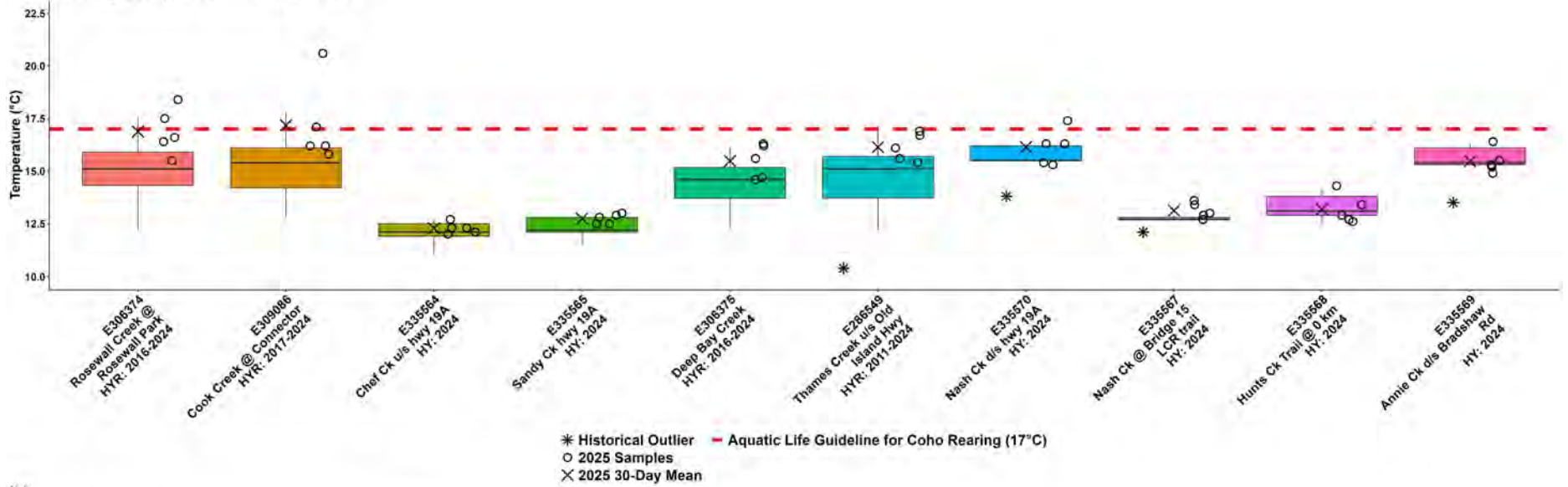




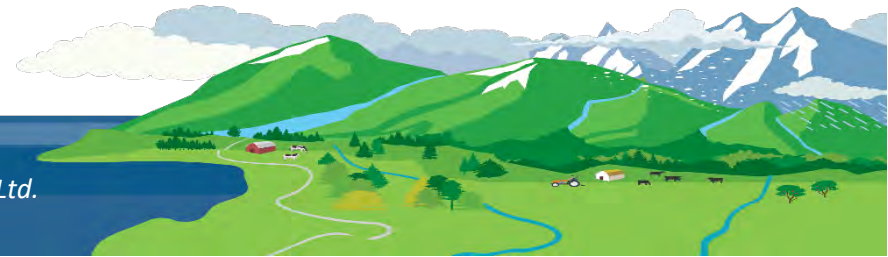
Notes:  
 HY: Indicates the single year for which historical data was included for a sample location.  
 HYR: indicates the year range for which historical data were included for a sample location.

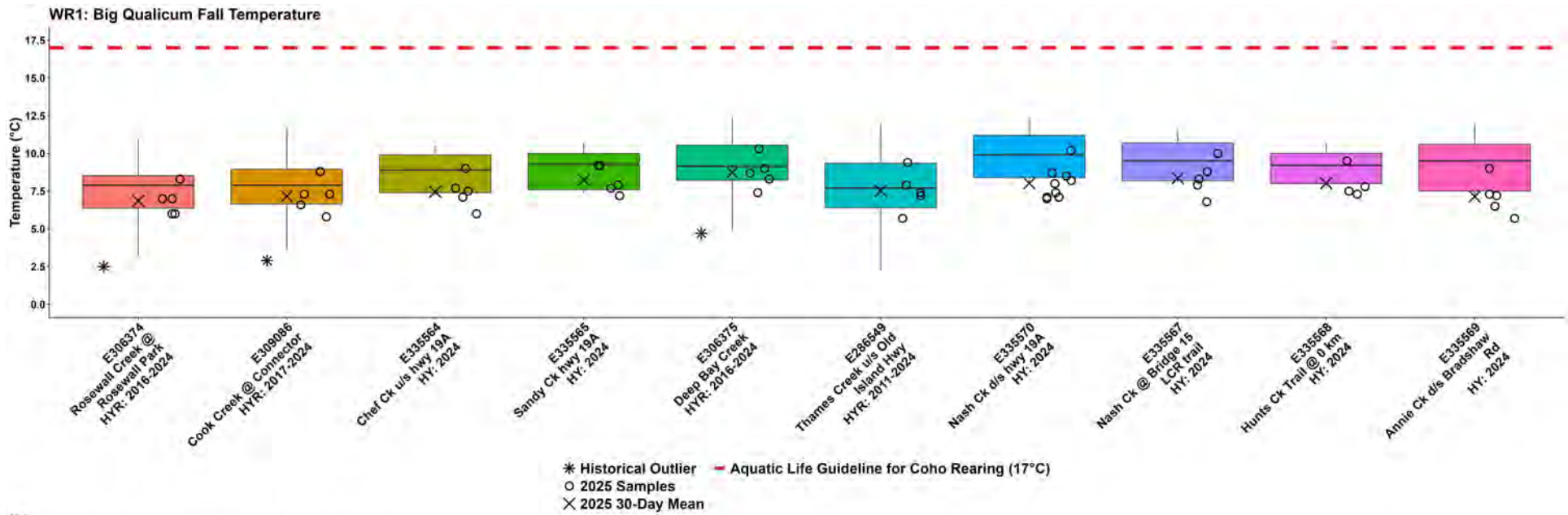


**WR1: Big Qualicum Summer Temperature**

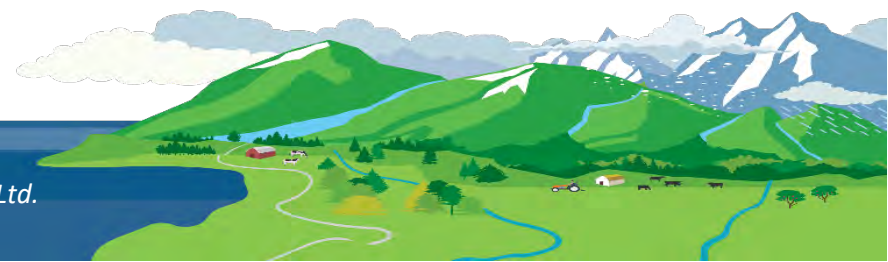


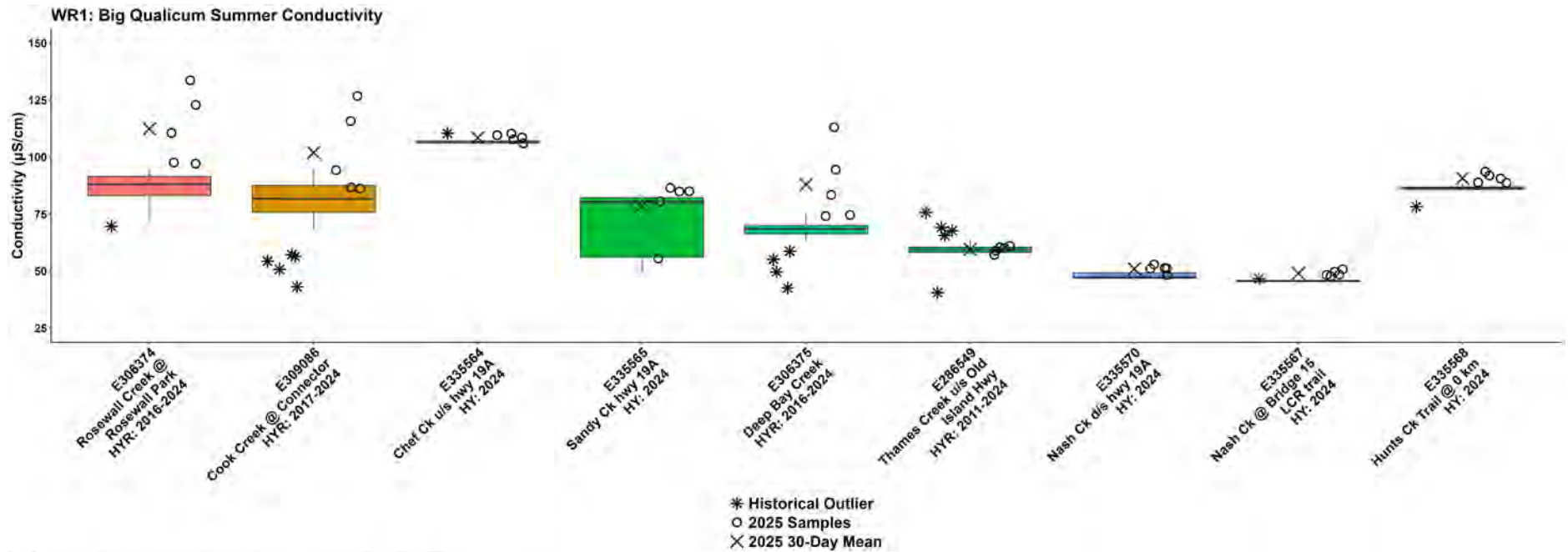
Note:  
 HY: Indicates the single year for which historical data was included for a sample location.  
 HYR: indicates the year range for which historical data were included for a sample location.



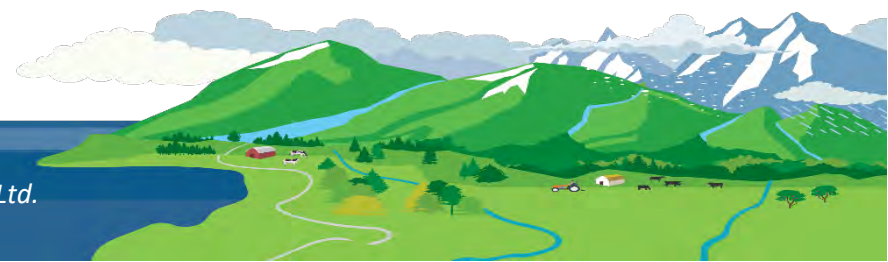


Note:  
 HY: indicates the single year for which historical data was included for a sample location.  
 HYR: indicates the year range for which historical data were included for a sample location.

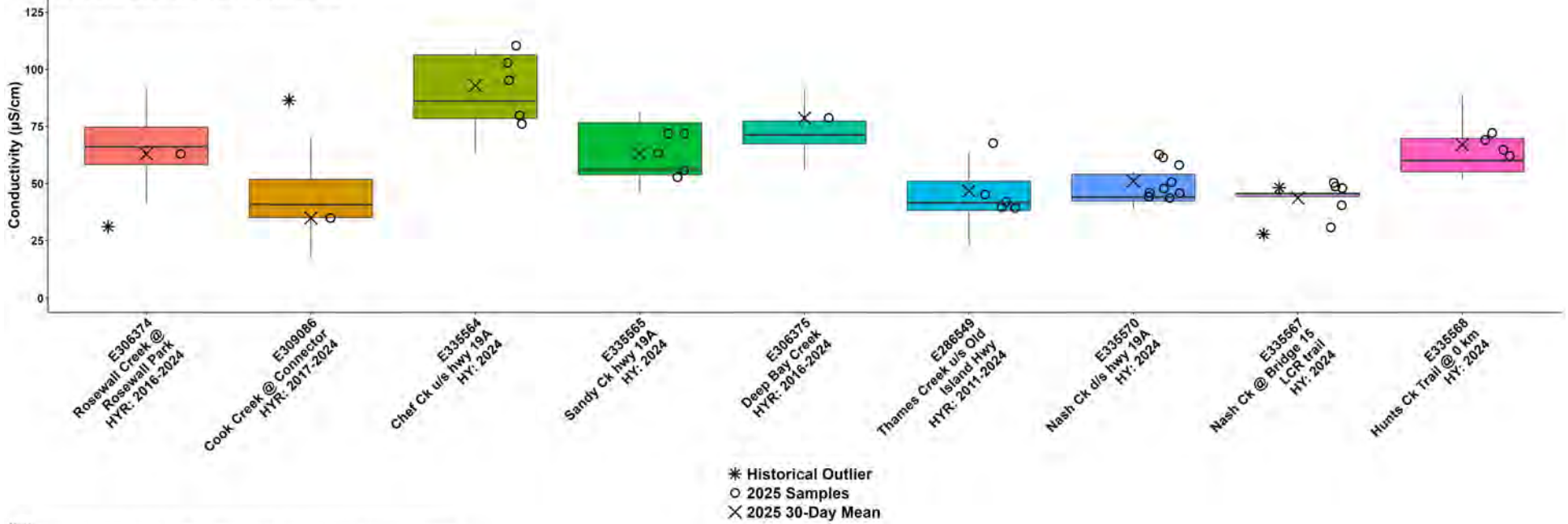




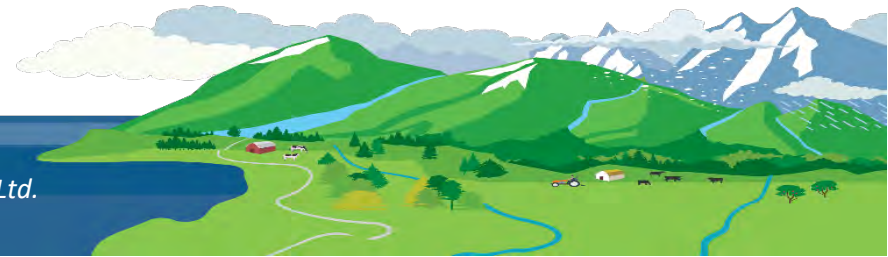
Note:  
 HY: indicates the single year for which historical data was included for a sample location.  
 HYR: indicates the year range for which historical data were included for a sample location.

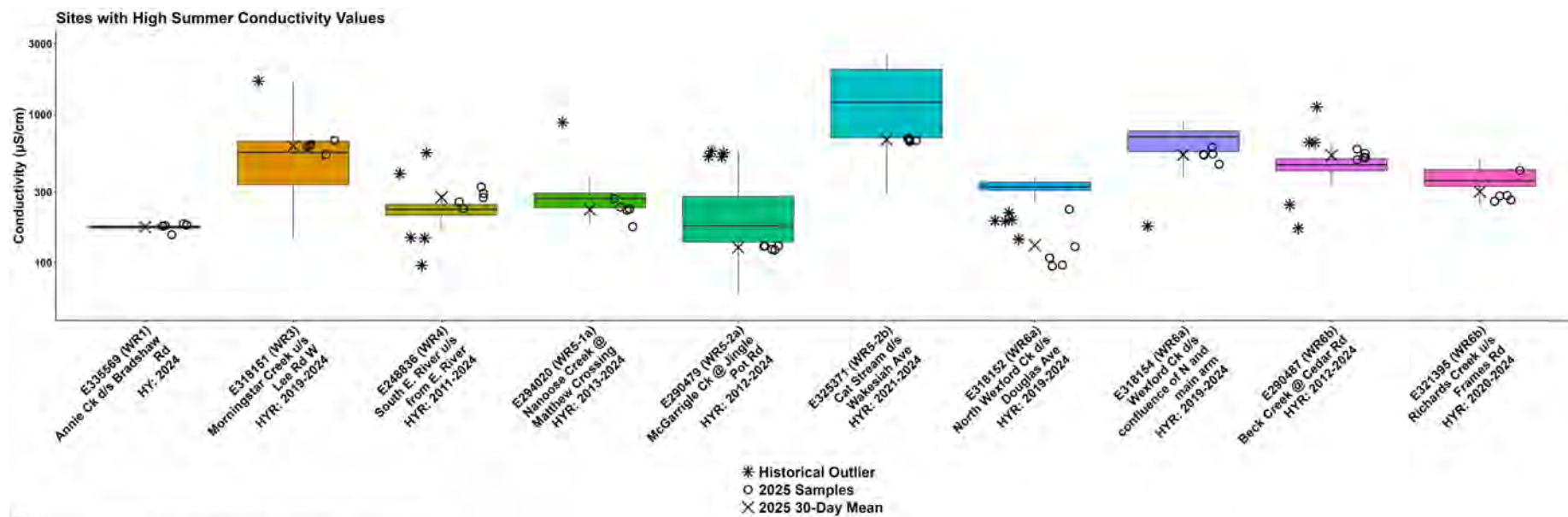


**WR1: Big Qualicum Fall Conductivity**

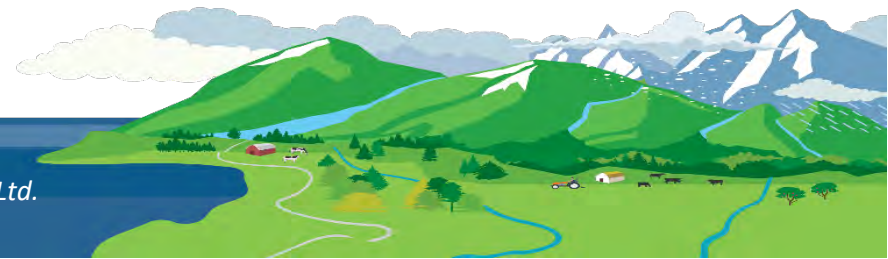


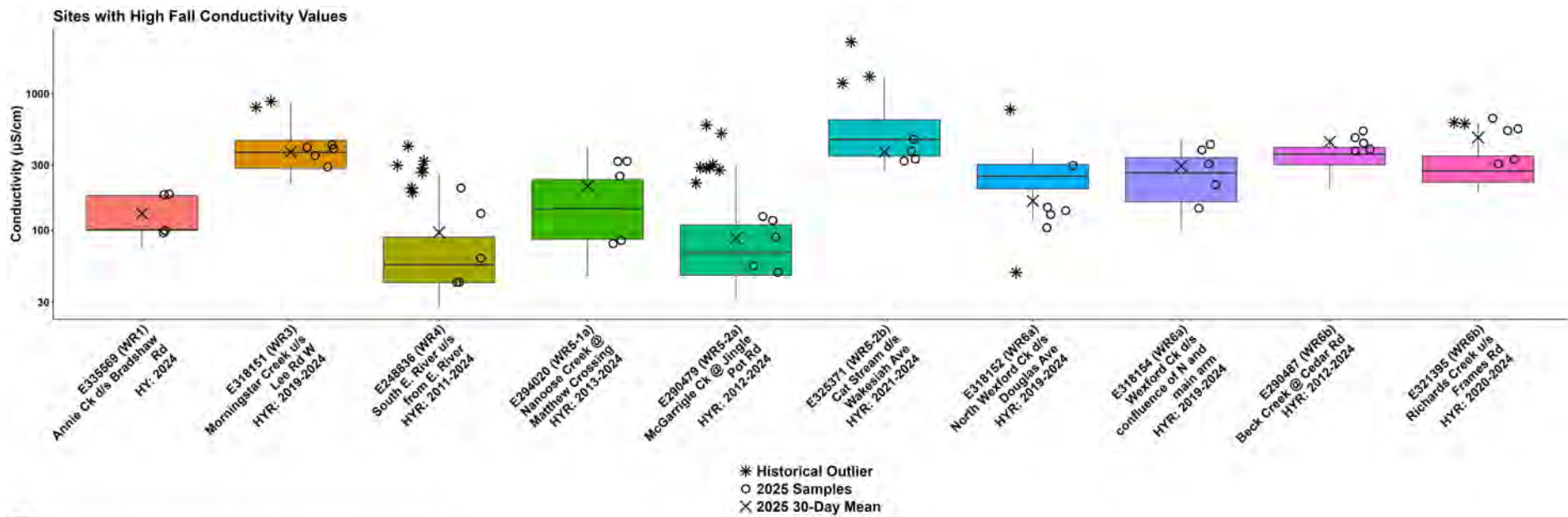
Note:  
 HY: indicates the single year for which historical data was included for a sample location  
 HYR: indicates the year range for which historical data were included for a sample location



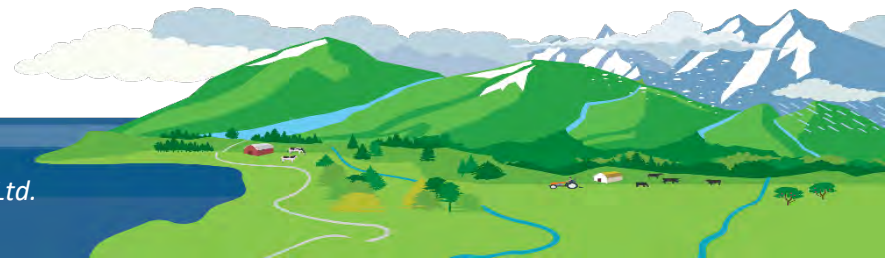


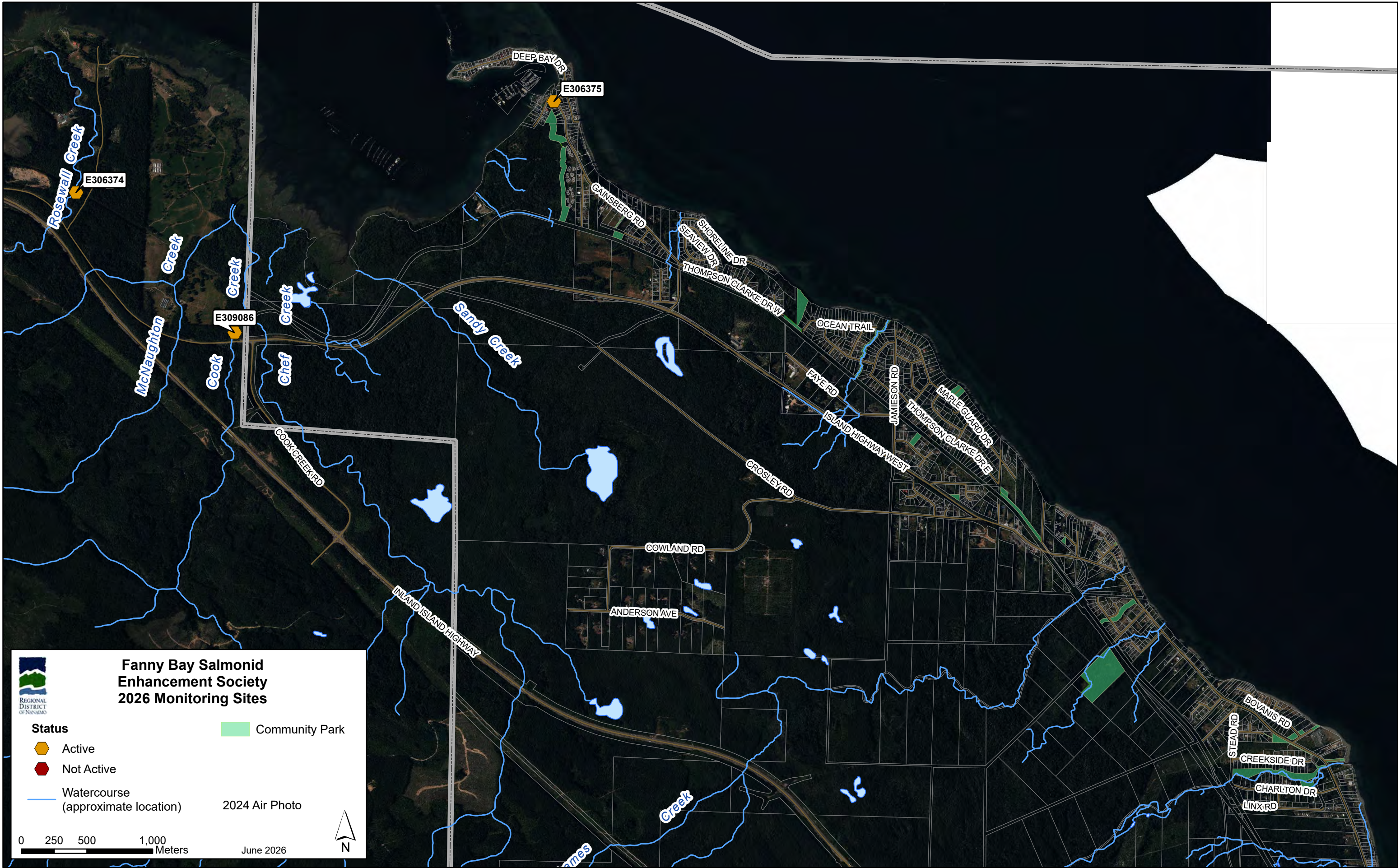
Note:  
 HY: indicates the single year for which historical data were included for a sample location.  
 HYR: indicates the year range for which historical data were included for a sample location.





Note:  
 HY: indicates the single year for which historical data was included for a sample location.  
 HYR: indicates the year range for which historical data were included for a sample location.





**Fanny Bay Salmonid Enhancement Society 2026 Monitoring Sites**

**Status**

- ▣ Active
- ▣ Not Active

— Watercourse (approximate location)

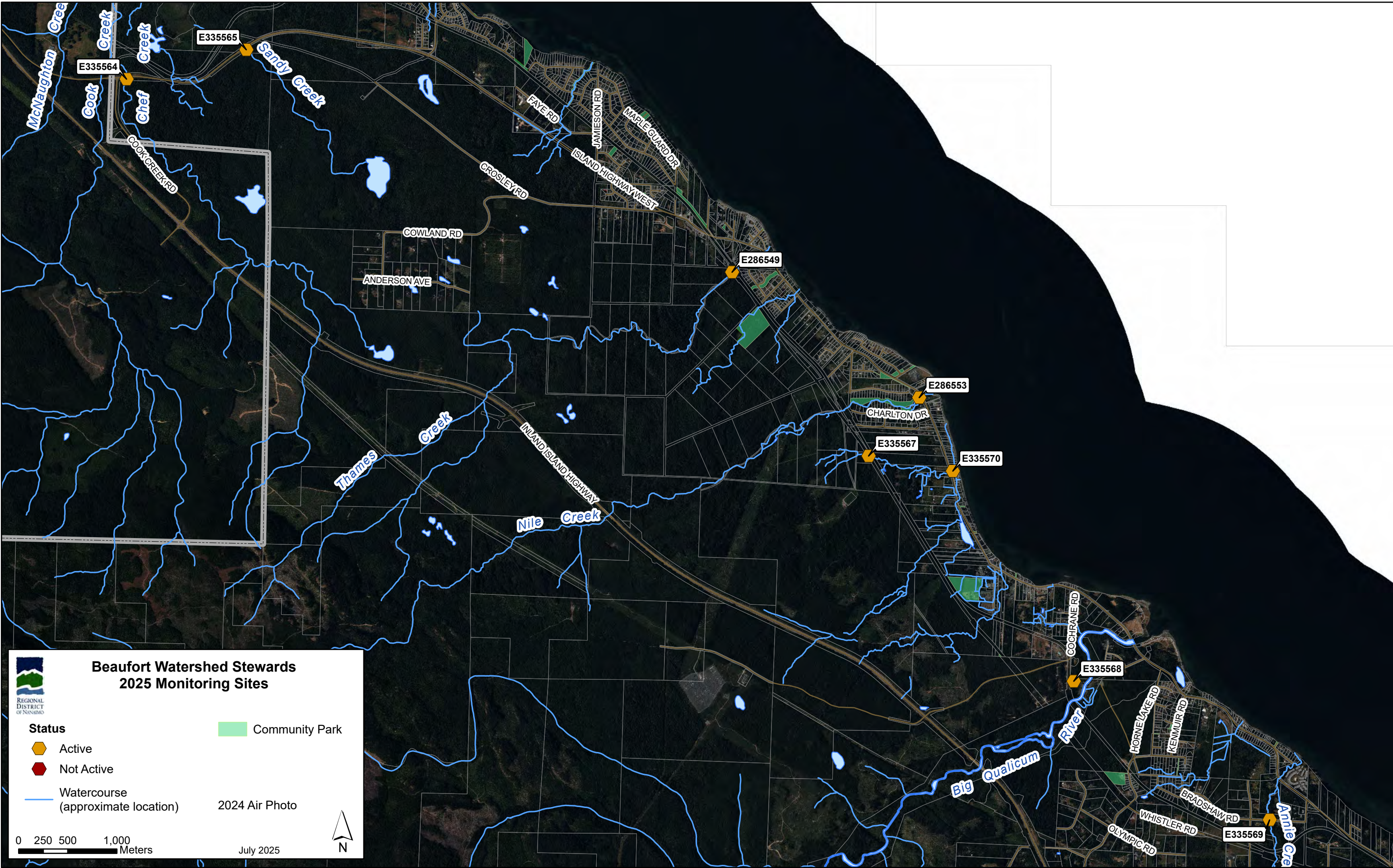
▭ Community Park

2024 Air Photo

0 250 500 1,000 Meters

June 2026

N



**Beaufort Watershed Stewards  
2025 Monitoring Sites**

REGIONAL DISTRICT OF NANAIMO

**Status**

- Active
- Not Active

Watercourse (approximate location)

Community Park

2024 Air Photo

0 250 500 1,000 Meters

July 2025

N