



REGIONAL
DISTRICT
OF NANAIMO

DRINKING WATER & WATERSHED PROTECTION

May 27, 2026 | Technical Advisory Committee Meeting



AGENDA

APPROVAL OF THE AGENDA

ADOPTION OF MINUTES

ROUNDTABLE UPDATES

INVITED PRESENTATIONS

STAFF PRESENTATIONS

NEW BUSINESS

ADJOURNMENT



ROUNDTABLE UPDATES

ALL COMMITTEE MEMBERS

WELCOME TO NEW DWWP STAFF:

- Kyla Seward
- Chrissie Finnie



INVITED PRESENTATIONS

Provincial Drought Response

Jaroslav Szczot

Ministry of Water Land and Resource Stewardship

Provincial Aquatic Ecosystem Drought Monitoring

Amy Sigvaldason

Ministry of Water Land and Resource Stewardship

Wetland Monitoring

Jenica Ng-Cornish

Mount Arrowsmith Biosphere Region Research Institute, Vancouver Island University



DISCUSSION ITEM

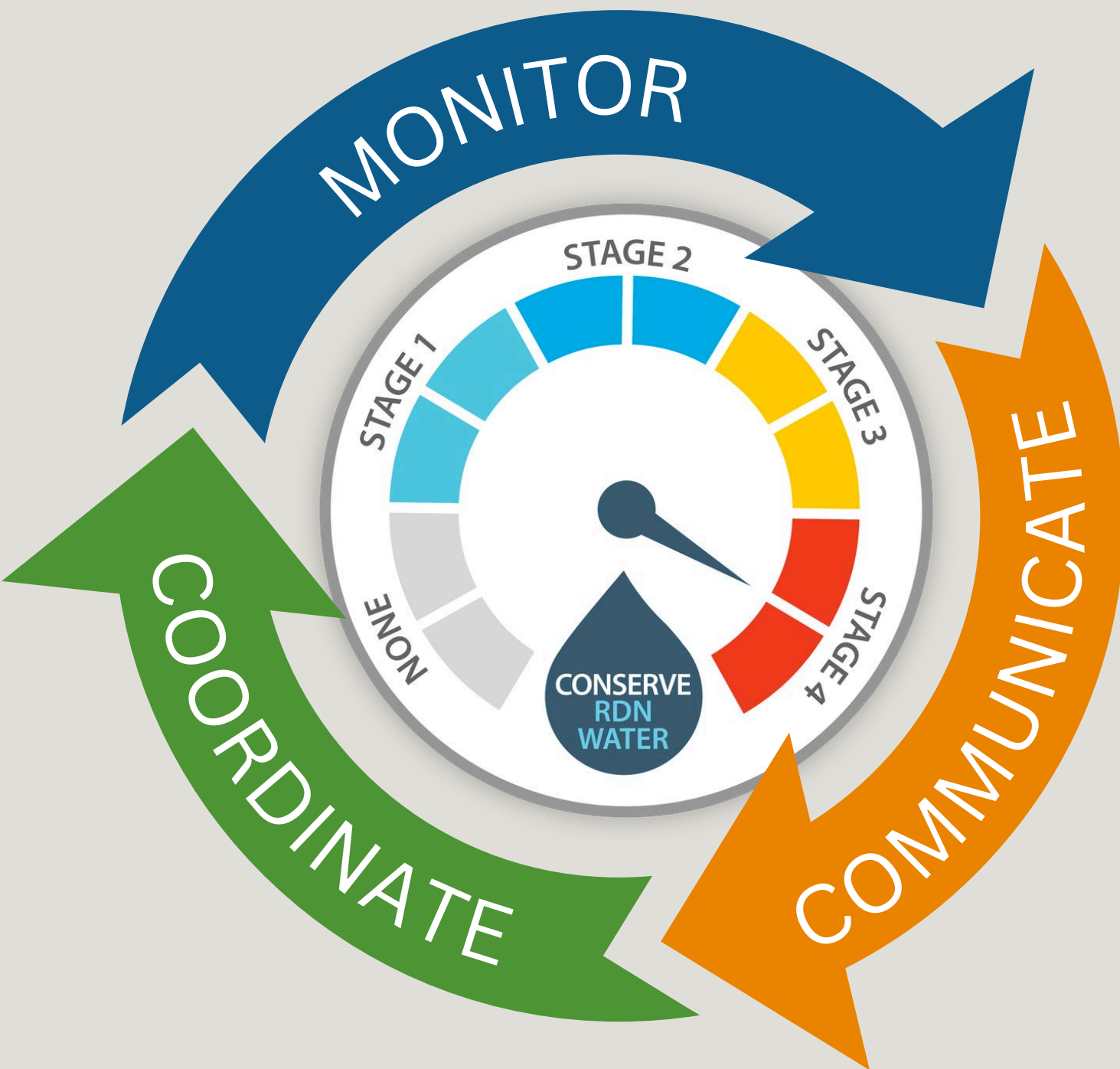
**Refined Water Budget (Phase 3)
for Cedar–Yellowpoint–Cassidy
DRAFT REPORT**



STAFF PRESENTATIONS

- Regional Drought Preparedness 2025
- Education and Outreach Updates
- Community Watershed Monitoring Network Updates
- Volunteer Observation Well Network Updates and Upcoming Pre-Summer Groundwater Reporting
- New Project: Rainwater Harvesting Guidebook Updates

REGIONAL DROUGHT PREPAREDNESS



Coordinating and responding to seasonal drought is a core activity of the DWWP program during summer months.

Information Hub:

- Acts as a conduit for updates from Provincial and regional monitoring programs
- Shares timely data and insights with partners & residents

Communication & Outreach:

- Produces and distributes drought-related communications materials
- Supports consistent messaging across the region

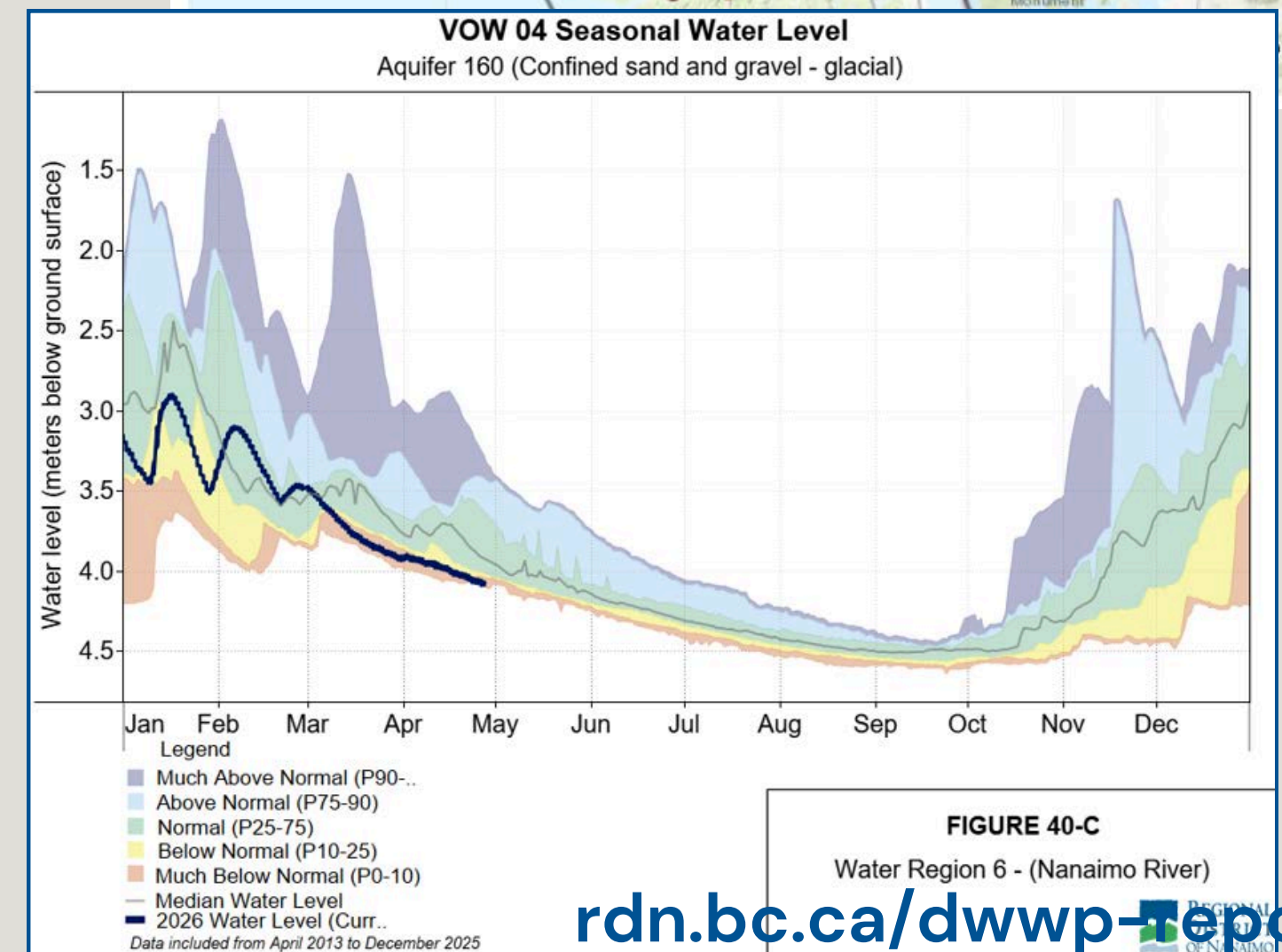
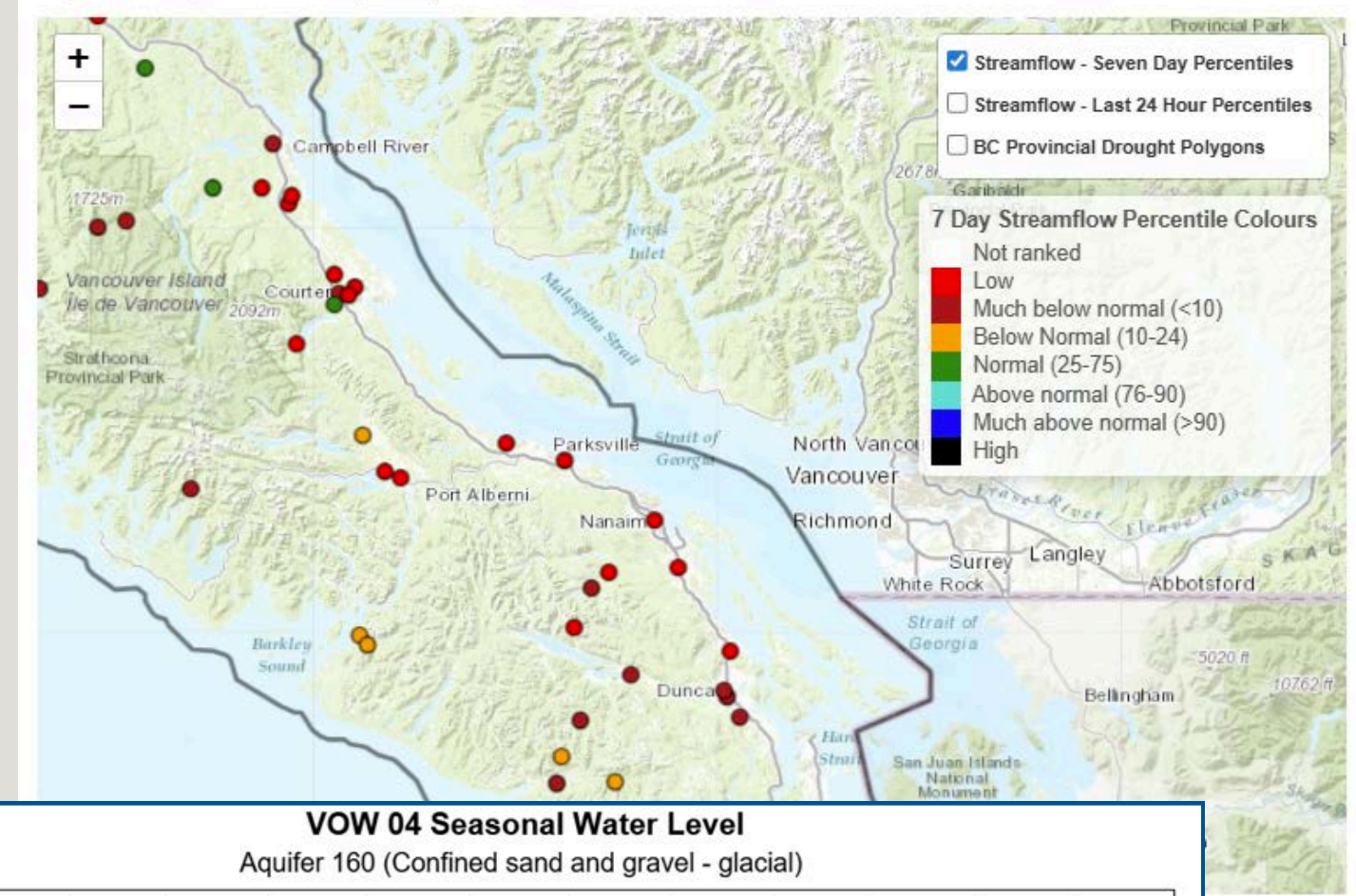
Coordinate / Convening Role:

- DWWP serves as a regional convener for water service providers
- Facilitates opportunities for coordinated drought response across jurisdictions

REGIONAL DROUGHT PREPAREDNESS MONITORING

- **NEW for 2026** → Drought monitoring support for the Province on small streams through the Community Watershed Monitoring Network
- Monitoring groundwater levels through the Volunteer Observation Well Network and reporting seasonal trends via the **Pre-Summer Groundwater Level Analysis**, highlighting early season conditions and multi-year aquifer trends
- Supported **operational snow survey data** and associated reports to improve understanding of Englishman River/Arrowsmith watershed specific snow distribution
- Receiving and sharing regular updates from the **Provincial hydrometric networks and groundwater observation well networks** to inform regional water management

Map data was updated on 26 May 2026, 03:35 AM.



REGIONAL DROUGHT PREPAREDNESS COMMUNICATION

WATER CONSERVATION

Water is a shared resource and practicing water conservation helps ensure the community's essential water needs for drinking water, hygiene and fire protection are met and water flows for fish and aquatic habitats are maintained. The RDN updated the Outdoor Water Conservation Levels this year. Some updates include:

- Level 3 now limits watering days to one day per week, with odd-numbered houses on Monday, and even-numbered houses on Thursday
- Level 4 remains the same however, car/boat washing allowed with a shut-off nozzle
- A change in name from "Watering Restrictions" to "Outdoor Water Conservation"

WATER CONSERVATION LEVELS

LEVEL 1 LEVEL 2 LEVEL 3 LEVEL 4

NOTICE OF VIOLATION

You have been observed to be in violation of Stage 4 Watering Restrictions.

Please cease all lawn sprinkling and outdoor water use except for drip irrigation and/or hand watering of garden beds.

Failure to comply will trigger Bylaw Enforcement and Ticketing.

Thank you for conserving our shared water resources during this time of extreme drought.

Climate change is causing our summer months to be increasingly hot and dry on Vancouver Island, which is resulting in a longer period of high water demand and more stress on our water sources.

Watering restrictions provide a framework for residents to follow in order to make efficient use of this valuable resource which we all share.

Please see the reverse of this page for information about Watering Restrictions and water conservation.

REGIONAL DISTRICT OF NANAIMO

250-390-4111
inquiries@rdn.bc.ca
www.rdn.bc.ca

I am WaterSmart

Win a rainbarrel prize pack!

GETINVOLVED.RDN.CA
Team WaterSmart
Welcome to the Team WaterSmart Get Involved ...

31

Like Comment 48 9 Share

WATER CONSERVATION

By Alex Rawnsley

'A year with some water challenges:' seasonal restrictions in effect across Nanaimo & Oceanside

Seasonal water restrictions are in place for most of the mid-island with areas like Nanaimo, Lantzville, Parksville and Nanoose Bay all at stage two. (Image Credit: Dreamstime)

May 1, 2026 (5:31 AM)

- Outreach on social media, in person, and on the Team WaterSmart Get Involved page
- Annual WaterSaver Contest
 - Participants share how they are saving water during the summer for an opportunity to win a rain barrel and a native plan prize package
- Print material
 - July ads to be included in the Nanaimo News Bulletin, PQB News, and Gabriola Sounder discussing drought awareness
 - Article in June edition of Neighbours of Hammond Bay Magazine
- Radio Ads to local stations in June to raise drought awareness and water restrictions
- News Releases – prepared when water conservation levels change

Messaging to focus on the forecasted dry summer and emphasizing water conservation as essential for community drinking water supplies, ecological health, and wildfire preparedness.

REGIONAL DROUGHT PREPAREDNESS COORDINATION

- Regular coordination with regional water purveyors to align conservation levels and share system updates.
- Maintaining a centralized interactive map showing watering restrictions by purveyor area.
- Bringing updates to the **DWWP Technical Advisory Committee** pre-drought season to review and gather feedback on regional drought strategies.

What watering restrictions are in effect where you live

WATER CONSERVATION LEVEL	1	2	3	4
EFFECTIVE DATES	Begins April 1	May 1–October 31	As required	
Frequency	ANYDAY	Every other day: Even # houses = Even # days Odd # houses = Odd # days	One day per week: Even # houses = Thursdays Odd # houses = Mondays	SPRINKLING BAN: LAWN WATERING NOT PERMITTED
Watering times	Between 7 pm - 7 am	Between 7–10 am OR 7–10 pm for 2 hrs MAX	Between 7–10 am OR 7–10 pm for 2 hrs MAX	
Washing vehicles, boats, houses (siding)	ANYTIME	ANYTIME (on your watering day)	Between 7–10 am OR 7–10 pm on your watering day	Between 7–10 am OR 7–10 pm once per week on your Level 3 watering day
Hand-watering, drip irrigation	ANYTIME	ANYTIME	VOLUNTARY RESTRICTIONS encouraging residents to reduce water use where they are able to	Between 7–10 am OR 7–10 pm
Filling fountains, pools, hot tubs	ANYTIME	ANYTIME (on your watering day)		NOT PERMITTED
Pressure washing walkways, driveways, siding	ANYTIME	ANYTIME (on your watering day)		ONLY prior to application of paint, preservative, stucco, or sealant
New lawn permits	Can apply for a permit	Can apply for a permit		NO PERMITS ISSUED

Vegetable gardens and fruit trees are exempt from all watering restrictions, even in Level 4.

rdn.bc.ca/watering-restriction-map

Major water service areas in our region include:

- City of Parksville
- RDN Water Service Areas (9 in total)
- EPCOR French Creek
- District of Lantzville
- City of Nanaimo
- Town of Qualicum Beach
- Deep Bay Improvement District
- Bowser Waterworks
- Qualicum Bay Horne Lake Waterworks
- North Cedar Improvement District

REGIONAL DROUGHT PREPAREDNESS

OVERALL APPROACH & MESSAGING

- Inter-regional support and coordination is key
- Diversity in water systems / local aquifer productivity across the region is an opportunity for education on water sources and specificity
- Approach with conservation education and communication first; tools for enforcement are secondary (*"educate before regulate"*)
- Essential to highlight that reducing consumption supports ecological health
- Climate change means we need to normalize a reduction in water use every summer



TEAM WATERSMART EVENTS

WATER TO EARTH MONTH IN REVIEW

- This year featured numerous in-person events, 6 hosted or organized by RDN. Highlights included:
 - Gabriola WellSmart Workshop
 - Rainwater Harvesting Workshop
 - Invasive Species Workshop
 - Cottle Creek and Hamilton Marsh Walks
 - Earth Day at Bowen Park
- Over 140 registered attendees at RDN organized workshops and walks



Hamilton Marsh Walk



Gabriola WellSmart Workshop



Cottle Creek Walk

TEAM WATERSMART EVENTS

WATER TO EARTH MONTH IN REVIEW

Birds & Wetlands and Smart Irrigation Workshops: Cancelled due to low registration

Lessons Learned:

- Events with registration through CoN were more successful than ones through the RDN. Two RDN registration events were cancelled due to low registration. More discussion needed with CoN to notes where their successes in promotion came from.
- Partnering with stewardship groups to have them lead tours and discuss their work was very successful. The public is interested in learning about volunteer work in their area and stewardship groups enjoy the promotion and appreciation of their work.
- Partnering with Qualicum Beach and Parksville for events could be beneficial for the success of potential workshops.
- Earth Day should be hosted at Maffeo Sutton or other outdoor location to reach new audiences (walk-by traffic) and boost attendance.

Local focus on Stewardship and Conservation



For more details and to register:
getinvolved.rdn.ca/team-watersmart
250-390-6560



scan the QR code



TEAM WATERSMART EVENTS

UPCOMING SEASONAL TOURS AND EVENTS



- Each year, the team aims to attend at least one event in each municipality/area.
- 3 Nanaimo River Watershed Tours in May/June – unable to facilitate Englishman River tours this spring
- RDN Summer Camp Visits in July/August
- World Rivers Day celebration to be organized by DWWP staff for late September

May 31	QB Family Day
Jul 1	Canada Day at Maffeo Sutton
Jul 11	Dog Days of Bowser - <i>Tentative</i>
Jul 12	QB Beach Day
Jul 25	Gabriola Farmers Market
Aug 15	Errington Hi Neighbour Day
Aug 19	Nanaimo Farmers Market
Aug 30	Cedar Farmers Market
Sep 5	Lighthouse Fall Fair
Sep 12	Lantzville Minetown Day + Nanoose Community Day

TEAM WATERSMART EVENTS

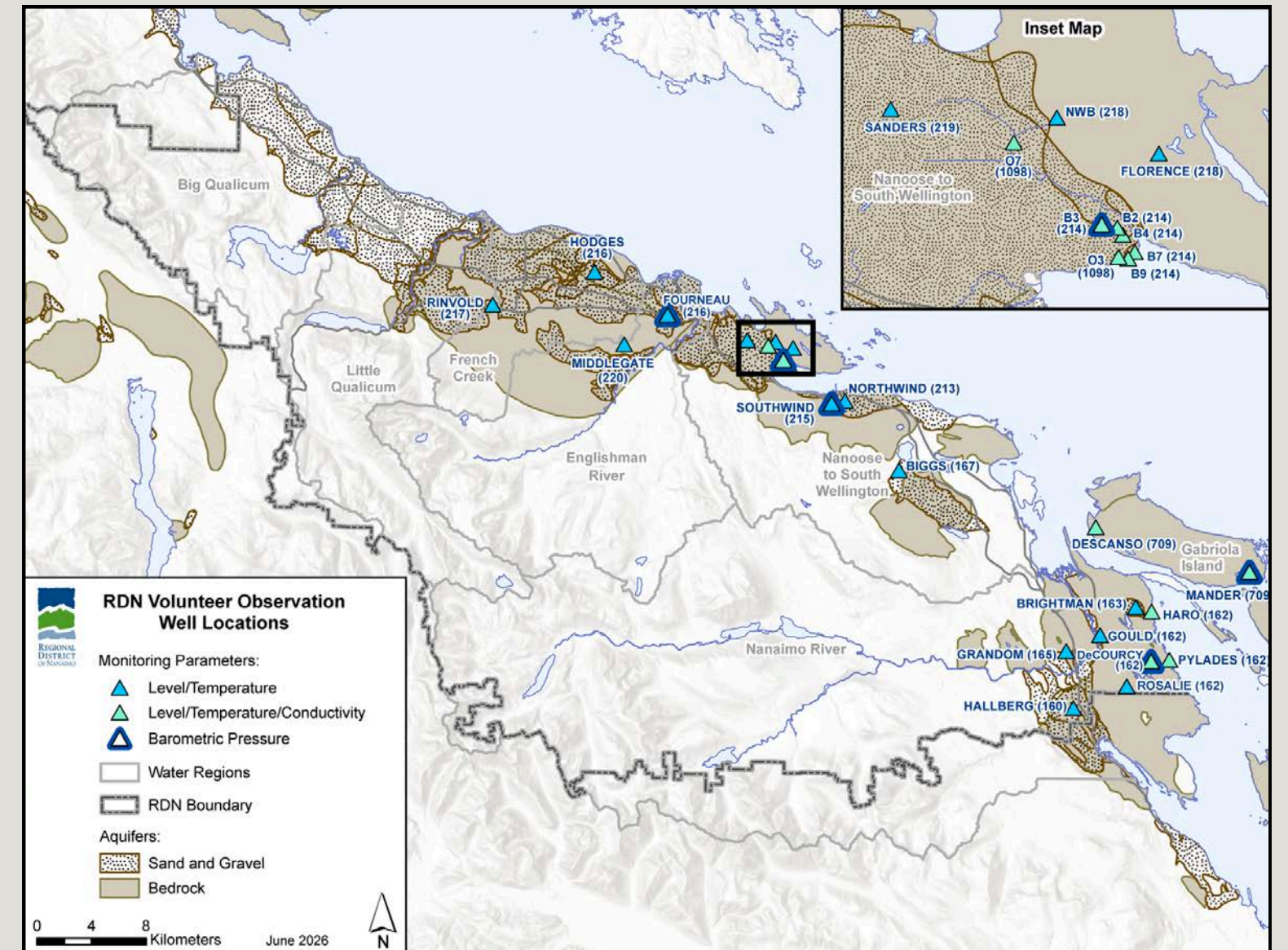
RESIDENTIAL IRRIGATION CHECKS

- Since 2010, hundreds of residential irrigation check-ups have been performed by Team WaterSmart staff. The program has effectively caught leaks, lowered excessive watering times and advised on water-saving techniques.
- Letters are being sent out to the top 100 water users of municipalities and RDN water systems to offer an Irrigation Check.
- In 2026 Team Watersmart is aiming to complete approx 15-20 checks ups in June through early August
- Report to residents includes:
 - Identification of leaks and inefficiencies with recommendations for improvement or remedy
 - Control timer settings recommendations
 - Irrigation rebate information



PRE-SUMMER GROUNDWATER LEVEL REPORTING

- Reported annually since 2020
- Brings together current data from the Provincial Groundwater Observation Well Network (32 sites) and the RDN's Volunteer Observation Well Network (30 sites)
- RDN site downloads completed in Apr/May to provide a snapshot in time of groundwater level conditions ahead of the summer season
- 21 out of 22 mapped aquifers reported in 2026




- Reporting shared with municipal, improvement district, and small water system staff to assist planning for summer groundwater conditions
- Supports management considerations and informs communications approaches

PRE-SUMMER GROUNDWATER LEVEL REPORTING

2026 report includes

- Summary of monitoring results compiled into a staff report
- Updated maps of RDN Volunteer Observation Well (VOW) and Provincial Groundwater Observation Well Network (PGOWN) sites with current data
- Summary tables with aquifer information, trends, and results
- Revised hydrographs for seasonal and historical trends



STAFF REPORT TO
Regional District of Nanaimo Board
June 24, 2025

REGIONAL DISTRICT OF NANAIMO
REGIONAL GROUNDWATER LEVEL ANALYSIS: PRE-SUMMER 2025

RECOMMENDATION

That the Board receive the report "Regional Groundwater Level Analysis: Pre-Summer 2025" for information.

BACKGROUND

Groundwater is essential to communities in our region, with most relying on it for their water supply. This includes water service areas operated by the Regional District of Nanaimo (RDN), District of Lantzville, City of Parksville and Town of Qualicum Beach. Four improvement districts also source groundwater for their waterworks systems, including Deep Bay Improvement District, Bowser Waterworks, Qualicum Bay Horne Lake Waterworks and North Cedar Improvement District. Additionally, Snaw-naw-as First Nation and Stz'uminus First Nation operate water supply systems that rely on groundwater from regional aquifers. EPCOR is a private water system that provides groundwater for residents in French Creek. In addition to these serviced water areas, there are over 4,500 registered wells and small water systems servicing residents' homes, businesses, institutions, and agricultural producers across the RDN.

The RDN Drinking Water and Watershed Protection (DWWP) program monitors groundwater levels in aquifers across the region, through the RDN Volunteer Observation Well Network, to understand water availability and assess trends over time. This supplements the monitoring done by the Province via the Provincial Observation Wells within the region. Since 2020, the RDN DWWP program has completed an annual regional analysis of groundwater levels to support water conservation decisions for the summer period ahead and provide an update on longer-term and seasonal trends observed in the aquifers within our region. This reporting has been supported by consulting professional hydrogeologists from Waterline Resources Inc (2020 and 2021) and GW Solutions Inc (2022, 2023, 2024 and 2025).

The historical trend analysis includes 63 wells – 27 RDN Volunteer Observation Wells (VOW) and 36 Provincial Groundwater Observation Network Wells (OW) – which monitor 13 surficial (sand and gravel) aquifers and 8 bedrock aquifers. The historical analysis considers all available data within the range between 2013-2025. The 2025 seasonal analysis includes 46 wells that have current data available at time of reporting. This covers 21 of the region's 22 aquifers that are monitored.

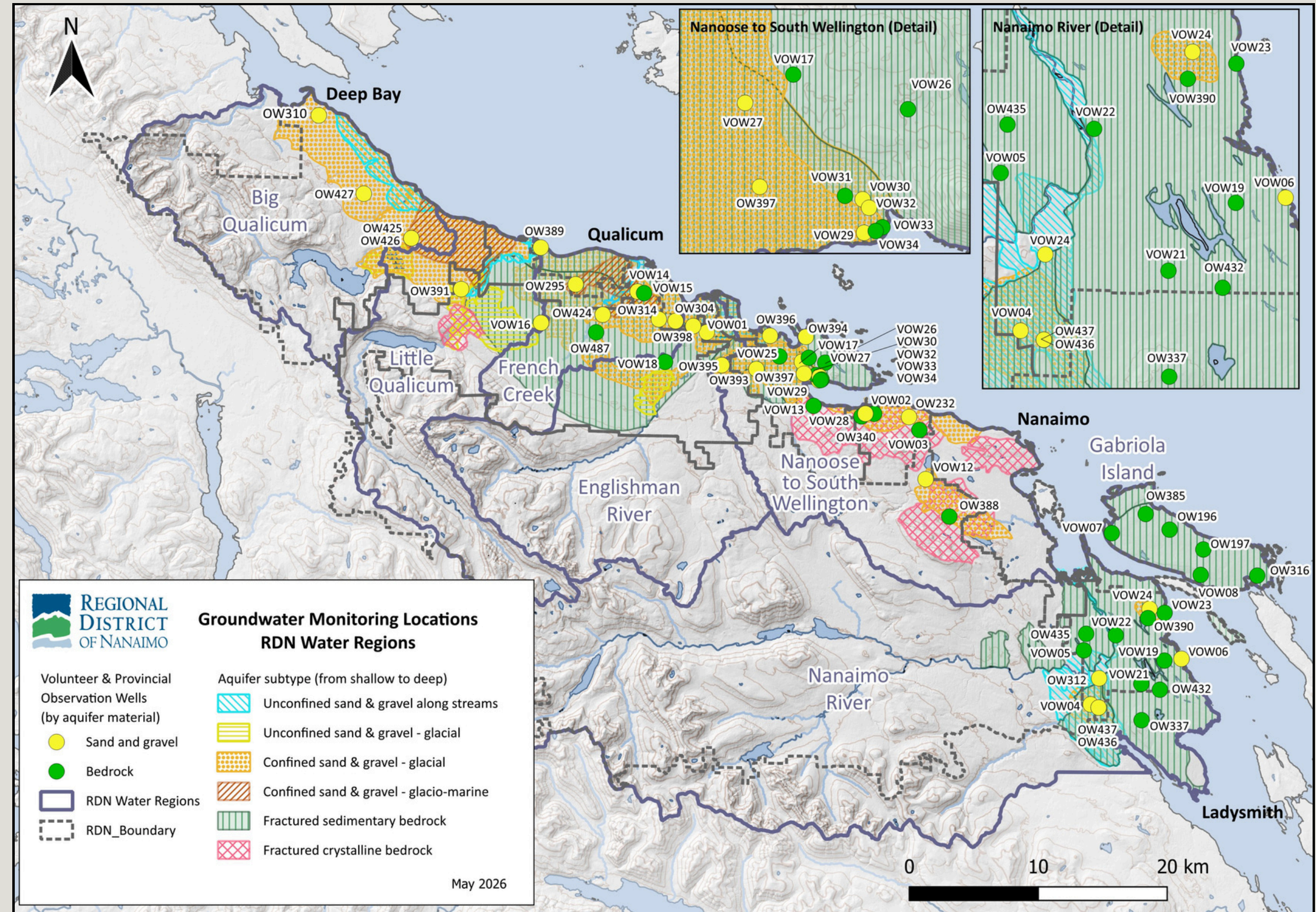
This memo will summarize both the seasonal and longer-term trends of the above-mentioned wells and aquifers and discuss the application of this information. The updated data tables and graphs provided as appendices.

Author: E. Forssman, Program Coordinator, Drinking Water & Watershed Protection
File No.

PRE-SUMMER GROUNDWATER LEVEL REPORTING

Map updates for 2026

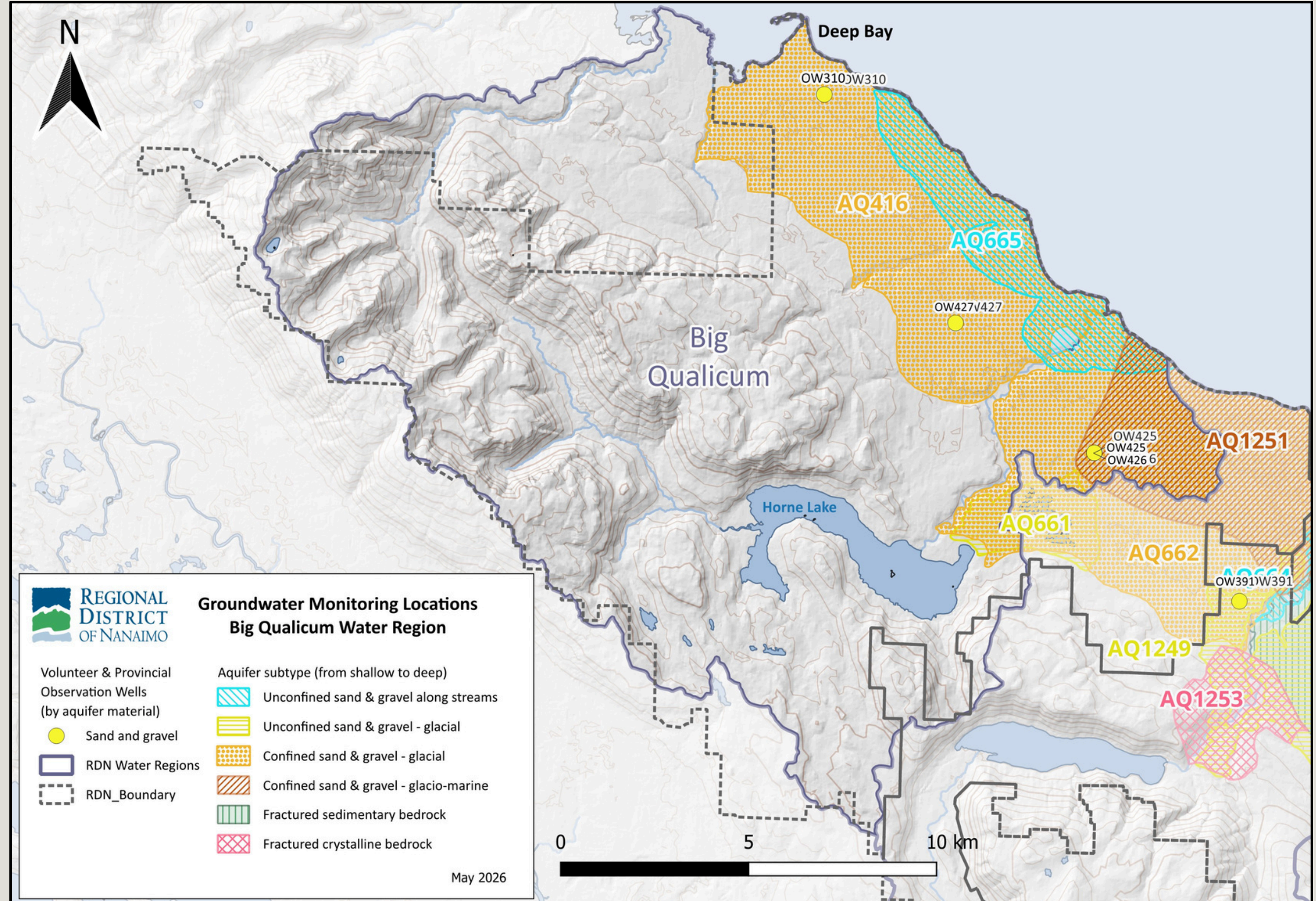
- Aquifer subtype
- Wells listed by aquifer material
- Nanaimo River inset
- Water region maps



PRE-SUMMER GROUNDWATER LEVEL REPORTING

Map updates for 2026

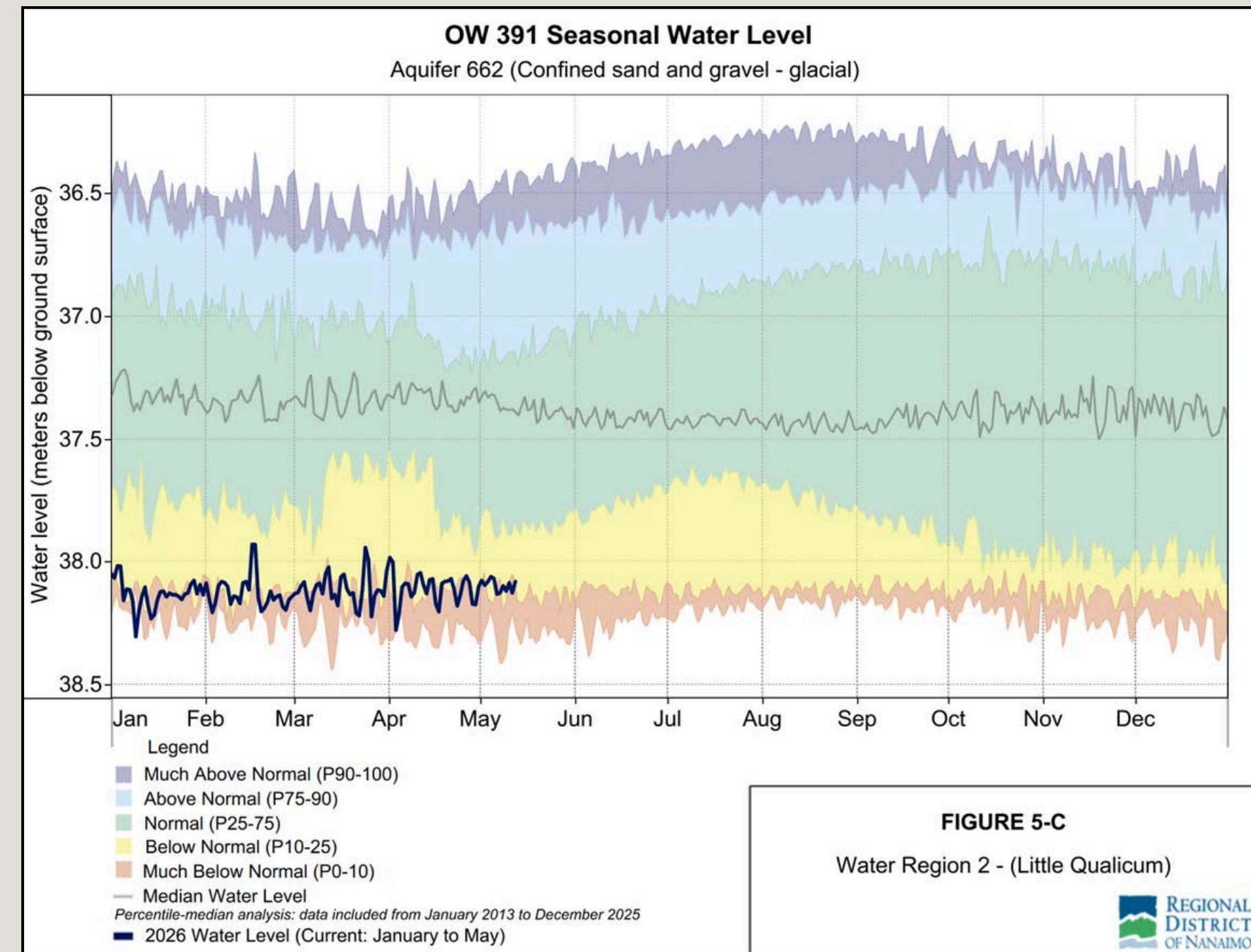
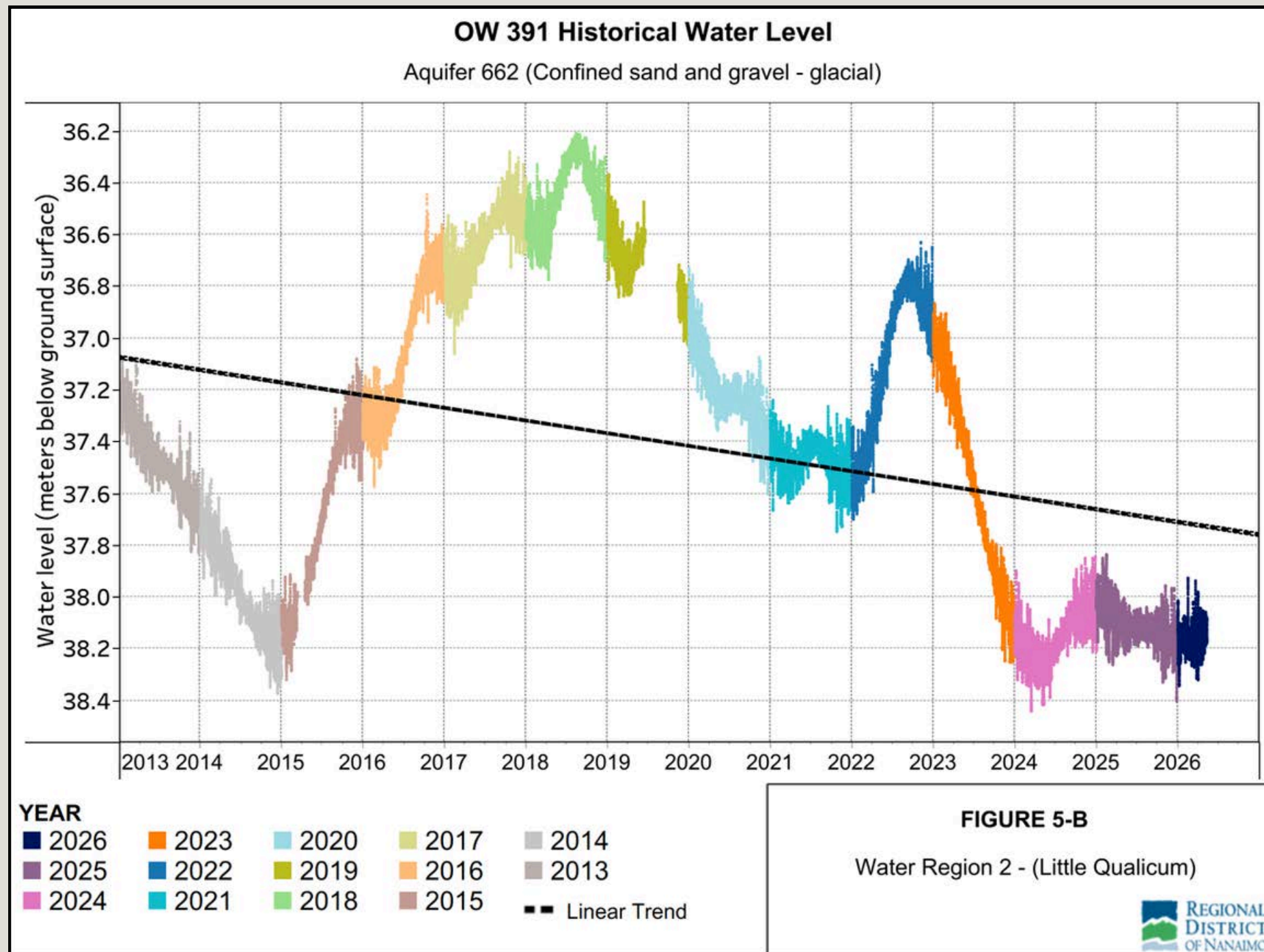
- Aquifer subtype
- Wells listed by aquifer material
- Nanaimo River inset
- Water region maps



PRE-SUMMER GROUNDWATER LEVEL REPORTING

Revised templates for hydrographs

- Redundancy removed
- Associated aquifer included in the title



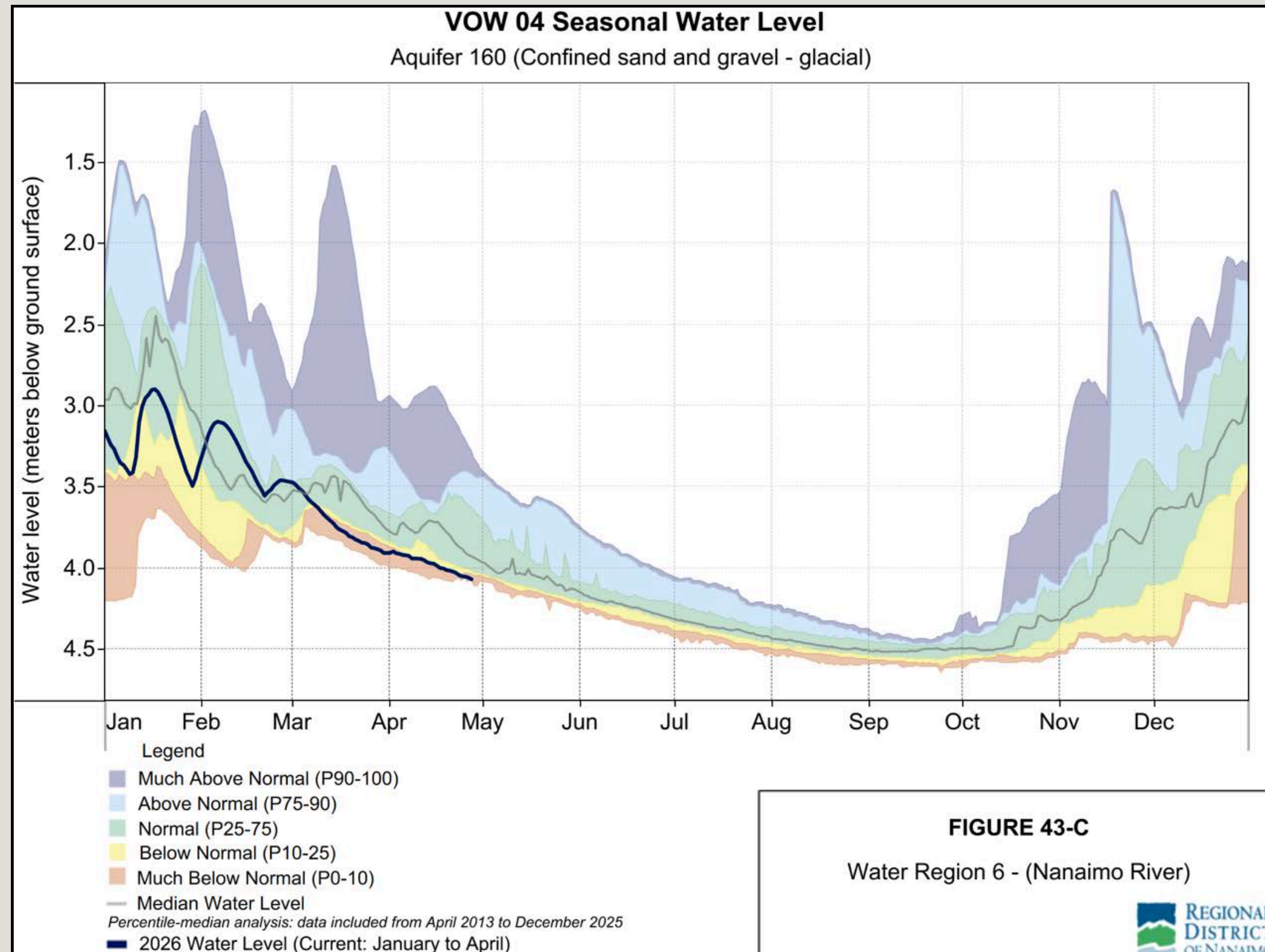
Revised reporting for seasonal hydrographs

- Yearly reporting removed, replaced with percentiles
- Illustrates where groundwater levels are at this year in comparison to previous years of data collection
- Aligns with provincial reporting

PRE-SUMMER GROUNDWATER LEVEL REPORTING

Percentiles

- Median groundwater level (grey line) shows the median value from the start of data collection to Dec. 31, 2025
- Shaded areas show the statistical range in groundwater levels observed on the same date at the site, divided into percentile classes
- The percentile class represents the daily value compared to the percentage calculated from all other observations on the same date
- The green shaded areas show values between the 25th to 75th percentile, representing the middle range of expected groundwater levels at the site considering typical variation between years



PRE-SUMMER GROUNDWATER LEVEL REPORTING

Preliminary results

- Five sites were seasonally within *normal* range; four with *increasing* trend and one with *stable to decreasing trend*
- Five sites were seasonally *below normal*; four with *variable* trend and one with *stable to decreasing trend*
- Eleven sites were *much below normal*; four with *stable* trend, four with *stable to decreasing trend*; one with *variable* trend, and one trend that is a *large decline*

Aquifer	Aquifer material (subtype)	Location	Seasonal	Historical trend
216	Surficial (CON)	Parksville	Normal	Increasing
167	Surficial (CON)	Millstone Valley	Normal	Increasing
165	Bedrock	South Wellington	Normal	Increasing
1098	Surficial (CON)	Nanoose	Normal	Increasing
161	Surficial (UNC)	Upper Cassidy	Normal	Stable to decreasing
215	Surficial (CON)	Lantzville	Below Normal	Stable to decreasing
709	Bedrock	Gabriola Island	Below Normal	Variable
220	Bedrock	Errington	Below Normal	Variable
214	Bedrock	Nanoose	Below Normal	Variable
162	Bedrock	Cedar Yellowpoint	Below Normal	Variable
213	Bedrock	Upper Lantzville	Much Below Normal	Increasing
664	Surficial (UNC)	Little Qualicum	Much Below Normal	Stable
217	Surficial (CON)	Qualicum Beach	Much Below Normal	Stable
1250	Surficial (CON)	French Creek	Much Below Normal	Stable
163	Surficial (CON)	Cedar	Much Below Normal	Stable
416	Surficial (CON)	Deep Bay	Much Below Normal	Stable to decreasing
662	Surficial (CON)	Big Qualicum	Much Below Normal	Stable to decreasing
218	Bedrock	Nanoose Peninsula	Much Below Normal	Stable to decreasing
160	Surficial (CON)	Lower Cassidy	Much Below Normal	Stable to decreasing
211	Bedrock	Benson Meadows	Much Below Normal	Large decline
219	Surficial (CON)	Nanoose	Much Below Normal	Variable

PRE-SUMMER GROUNDWATER LEVEL REPORTING

June reporting to RDN Board

- Pending Board approval, the report will be
 - Published on our websites
 - Shared directly with program volunteers and partners

Intended audience

- Water purveyors and partner agencies
- Community stewards, citizen scientists, and volunteers
- Outreach and education publications

RDN ► Regional Services ► Drinking Water & Watershed Protection ► Reports

Reports - Drinking Water and Watershed Protection

Reports are compiled from external and internal sources. If you know of a report that is appropriate to add to this inventory please email: waterprotection@rdn.bc.ca

Region-Wide Reports

Reports

- Regional Groundwater Level Analysis Pre-Summer 2025 (MEMO) + Tables and Graphs (APPENDICES)
- Regional Groundwater Level Analysis Pre-Summer 2024 (MEMO) + Tables and Graphs (APPENDICES)
- Climate-Informed Water Supply Planning and Communication Approaches in the Regional District of Nanaimo
 - Appendix 1 - Best Practices for Climate-Informed Water Supply Planning
 - Appendix 2 - Municipal Water Service Provider Supply Profiles
- 2023 Community Watershed Monitoring Network Data Analysis Technical Memorandum
- Regional Groundwater Level Analysis Pre-Summer 2023 (MEMO) + Tables and Graphs (APPENDICES)
- Regional Groundwater Level Analysis Pre-Summer 2022 (MEMO) + Tables and Graphs (APPENDICES)
- RDN Regional Strategy for Rainwater Management - 2022
- RDN Freshwater Perspectives Public Benchmark Survey Results - 2021
- Regional Groundwater Level Analysis Pre-Summer 2021 (MEMO) + Tables and Graphs (APPENDICES)

www.rdn.bc.ca/dwwp-reports

Also available at:

www.rdn.bc.ca/groundwater-monitoring



COMMUNITY WATERSHED MONITORING NETWORK UPCOMING RESULTS SHARING

- Event to discuss data collected by volunteers of the surface water quality sampling program, the Community Watershed Monitoring Network (CWMN), share information on relevant topics for volunteer community stewards, and hear feedback on regional programs
- Formerly called CWMN Results session – renaming to Water Data and Dialogue
 - Speaks to what the event is and supports event promotion
- Free event
- Open to the public
- Registration is required
- Catered event



COMMUNITY WATERSHED MONITORING NETWORK WATER DATA AND DIALOGUE EVENT

Presentations will include

- CWMN data analysis and how to move data to action
- Guest speakers
 - Community Flow Monitoring Network (BCCF)
 - Drought monitoring program (WLRS)
 - Low tech stream restoration (Origins Environmental Services Ltd)
 - Implementation of green infrastructure (BCCF)
- Interactive session on stewardship mapping tool development and RDN DWWP stewardship support and funding

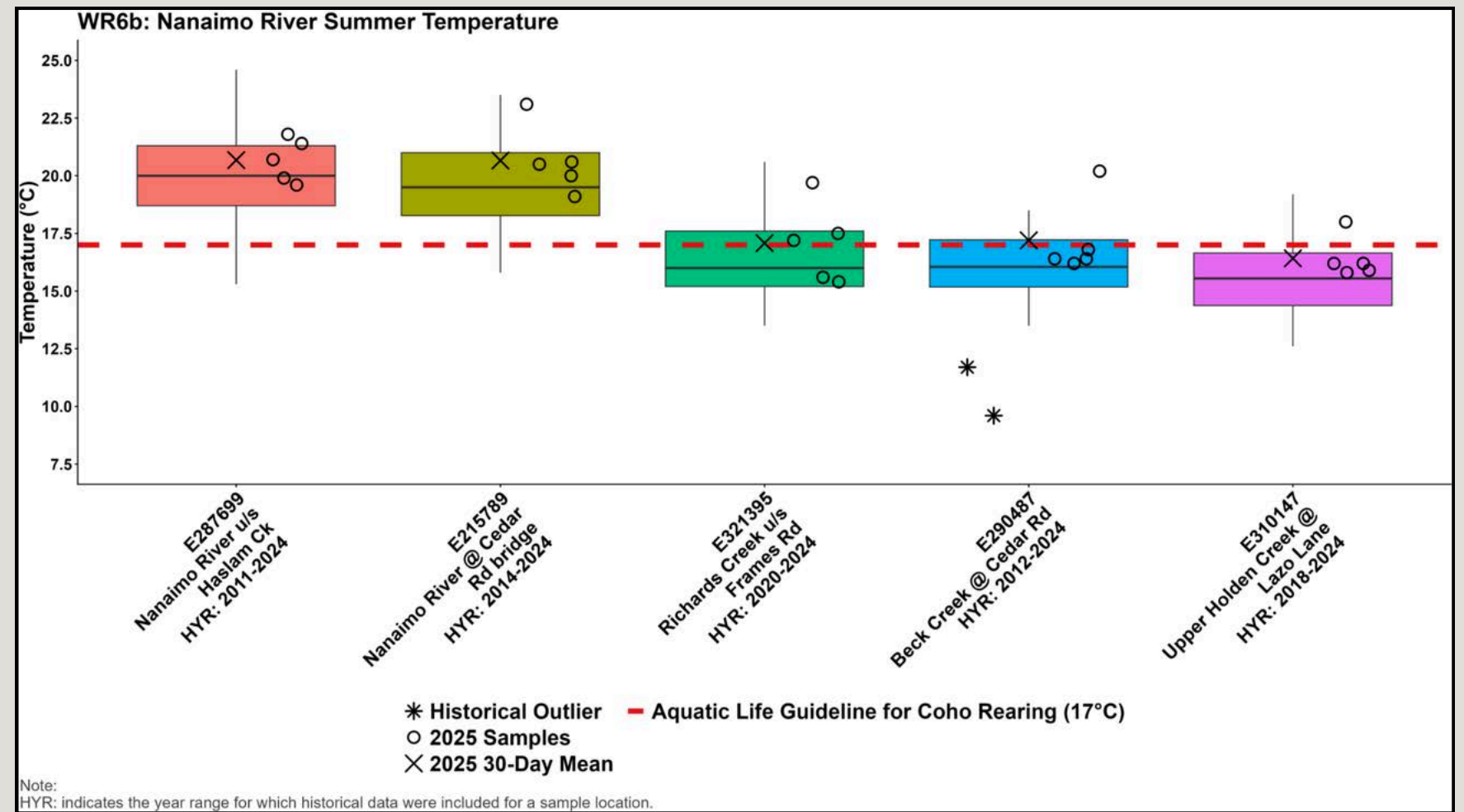


COMMUNITY WATERSHED MONITORING NETWORK

DATA ANALYSIS

CWMN surface water quality data

- Two 5-in-30 sample periods
 - Summer low flow & fall flush
- Parameters include water temperature, dissolved oxygen, turbidity, and specific conductance
- Provincial methodology used supports comparison to Ambient Water Quality Objectives and Guidelines
- In 2025, 69 sites, 44 streams, and 29 watersheds were monitored
- Thirteen volunteer groups collected 2,780 results sampling in 2025



- Validated data publicly available on Provincial database
- Data analysis is in progress and will be presented at Water Data and Dialogue
- Analysis available on www.rdn.bc.ca/cwmn in June

COMMUNITY WATERSHED MONITORING NETWORK

Event promotion in progress

- Direct invite to CWMN volunteers
- Promoted at events attended by TWS
- Social media posts
- Shared with municipal partners and other RDN departments for promotion
- To be shared on RDN CWMN website and on Stewardship and Monitoring Get Involved page
- Shared with DWWP TAC – ***please share with your networks too***



Water Data and Dialogue

June 19, 10 a.m. - 3:30 p.m.
**Tigh-Na-Mara,
Parksville**

*Presentations and Interactive
Discussion*

Register your spot by June 14

Home > Activity search

Activity search

Q water Search

When (1) ▾ Where ▾ Who ▾ Activities ▾

In progress / Future

Found 1 matching result(s) Sort by: Name ▾ Map view

Water Data and Dialogue ⓘ Free

#24168 / Activity category Special Interest / 18 yrs + / Openings 20

📍 Tigh-Na-Mara Seaside Spa Resort and Conference Centre, Salon A - 1155 Resort Dr, Parksville BC Enroll Now

📅 June 19, 2026 ⌚ Fri 10:00 AM - 3:30 PM 📍

COMMUNITY WATERSHED MONITORING NETWORK

2026 SURFACE WATER QUALITY MONITORING

CWMN sampling support will continue in 2026

- Monitoring cycle starts with equipment asset management
 - 21 YSI meters and 18 Hach turbidimeters
 - Test winterized equipment
 - Equipment replacements
 - Supplies inventory and ordering
- Gauge volunteer and group interest
- Dates for training and staff support



COMMUNITY WATERSHED MONITORING NETWORK

2026 SURFACE WATER QUALITY MONITORING

Continuing the monitoring cycle

- Training sessions for CWMN and drought monitoring
- Equipment support during monitoring and beyond
- Sampling coordination and communications
- Quality assurance and quality control
- Data management
- Analysis and reporting of collected data



RAINWATER HARVESTING GUIDEBOOK UPDATES

PROJECT INTRODUCTION

Project Context & Objectives

To update the Rainwater Harvesting Guidebook (2012) to:

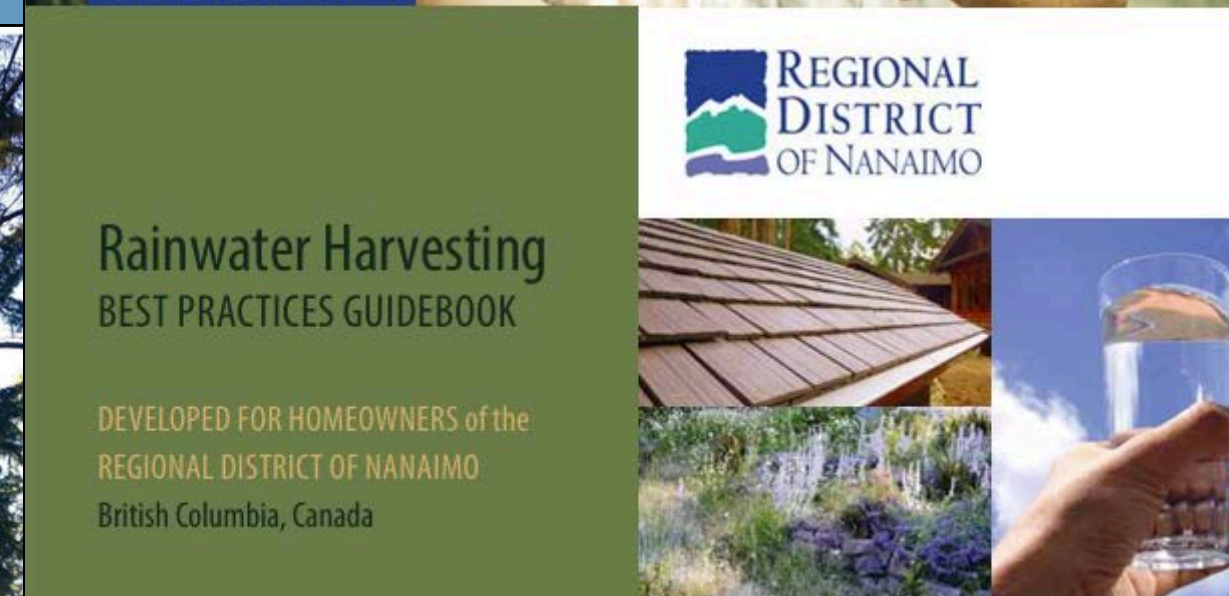
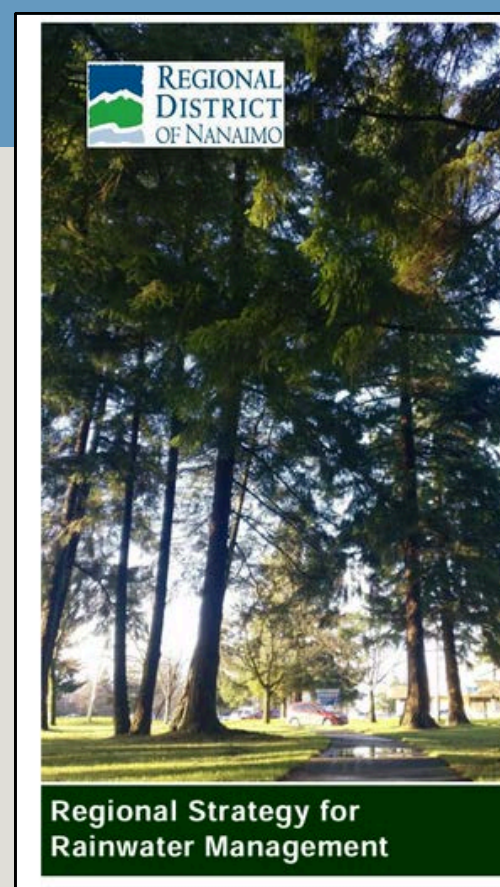
- Reflect current best practices
- Support the **Regional Strategy for Rainwater Management**
- Translate watershed goals into practical homeowner actions
- Expand beyond harvesting → holistic rainwater management

2012 Guidebook gaps

- Some content outdated (technical, regulatory, climate)
- Narrow focus on harvesting vs. broader management
- Limited integration with newer RDN resources

Current need

- Increasing climate pressures (drought + intense rainfall)
- Need for clear, practical homeowner guidance to support RSRM

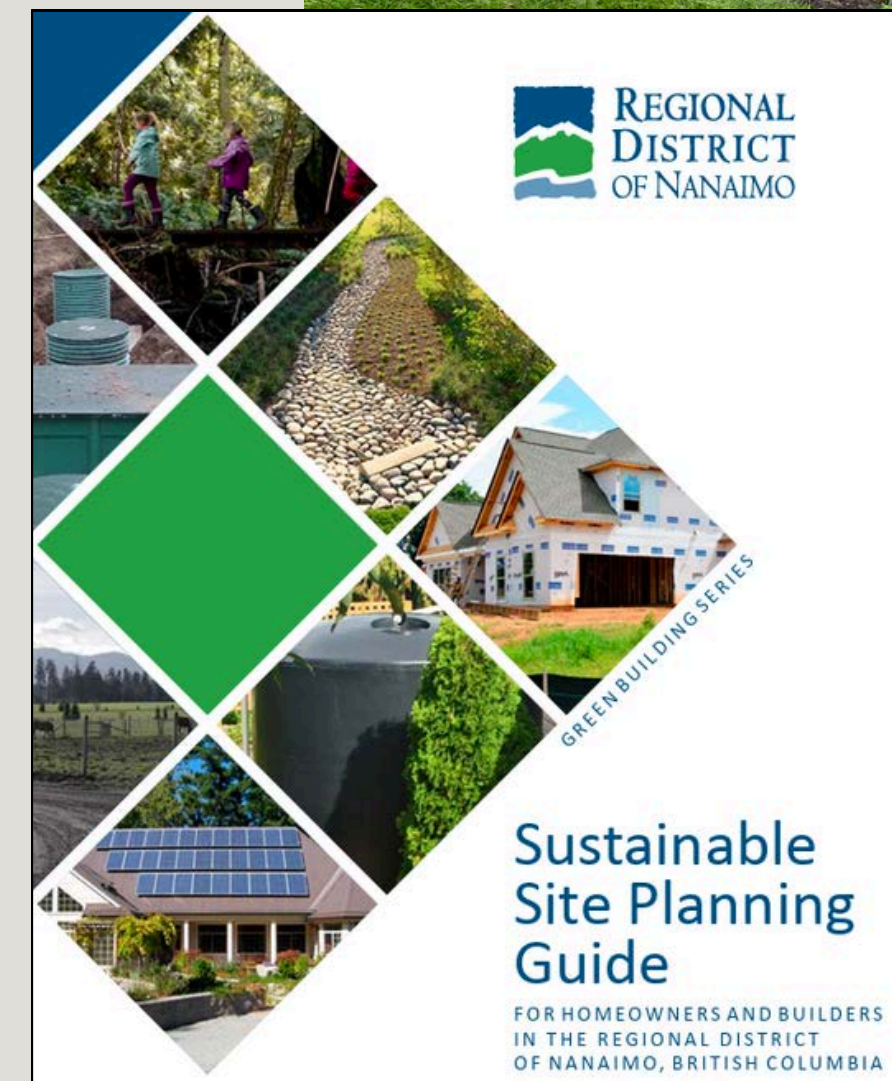


RAINWATER HARVESTING GUIDEBOOK UPDATES

PROJECT INTRODUCTION

Scope of Work

1. Targeted Update (not full overhaul)
 - Refresh key technical content, regulations, climate context
 - Improve clarity, usability, and navigation
 - Maintain original structure and strengths
 2. Reference Manual Approach
 - Provide clear cross-references to 2012 guidebook
 - Align with *RDN Sustainable Site Planning Guide* messaging
 - Position as a core, consolidated RDN resource
 3. Focused Content Expansion
 - Add accessible guidance on:
 - Rain gardens
 - On-site infiltration and reuse practices
- Emphasize:
- Lot-level integration of practices
 - Practical actions (not engineering design)



RAINWATER HARVESTING GUIDEBOOK UPDATES

PROJECT INTRODUCTION

Deliverables

- Updated, reference-style guidebook (PDF-ready)
- Improved diagrams, figures, and illustrations, cross-linking with other RDN reference materials
- Optional: fact sheets, checklists, outreach graphics

Audience

- Homeowners (primary)
- Builders, landscapers, stewardship groups, local gov staff

Timeline (2026)

- Early Summer: Finalize scoping, post RFP/RFSQ
- Summer/Fall: Development & review
- Fall: Draft
- 2026 Q4- 2027 Q1: Final release & presentations





REGIONAL
DISTRICT
OF NANAIMO

THANK YOU!

Next Meeting: September 23, 2026