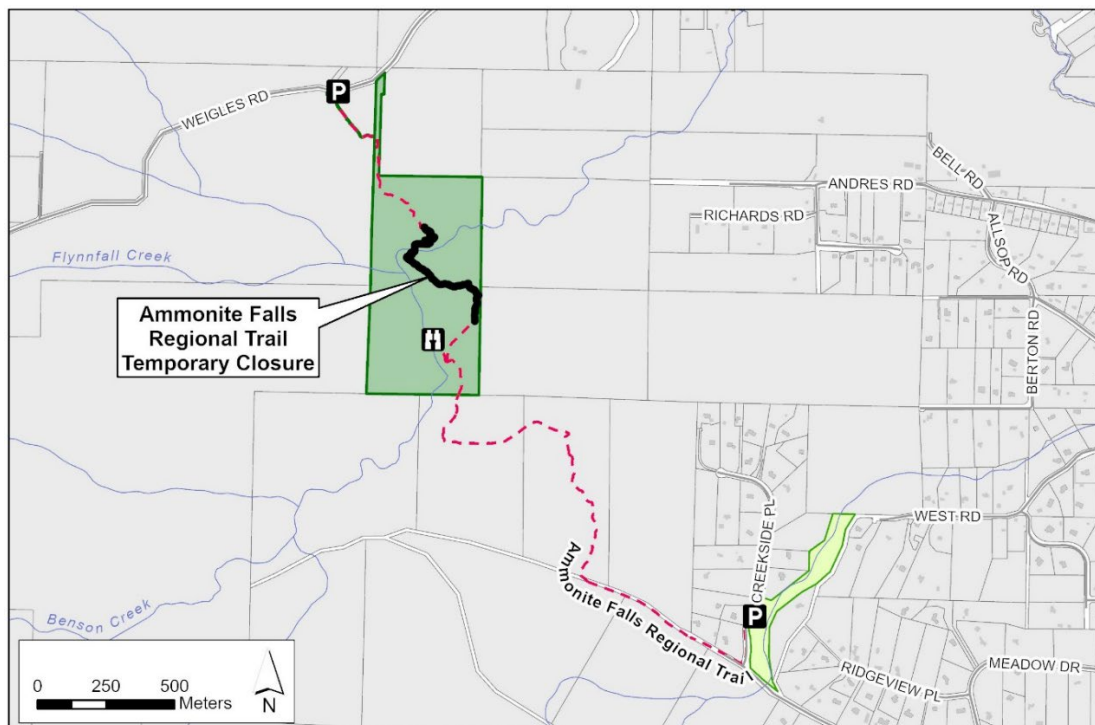


Ammonite Falls Regional Trail – Partial Temporary Closure

The section of Ammonite Falls Regional Trail in Benson Creek Falls Regional Park that runs through the ravine is closed indefinitely due to stair damage caused by a fallen tree. As a result, visitors cannot access Ammonite Falls from the Weigles parking lot at this time. For your safety, do not use the closed section of trail and obey signs posted on site.

With the weather changing, other Regional District of Nanaimo (RDN) parks may be impacted by the effects of high winds, increased rainfall, snow and other weather events throughout the winter months.

- Take caution and do not enter forested parks and trails during adverse weather events.
- Some parking lots may be closed due to access constraints.
- Report any safety concerns within RDN parks and trails online at rdn.bc.ca/parks-safety-concern-form.



For more information, please contact:
Parks Services
Regional District of Nanaimo
1-888-828-2069
rdnparks@rdn.bc.ca

Get Involved RDN!