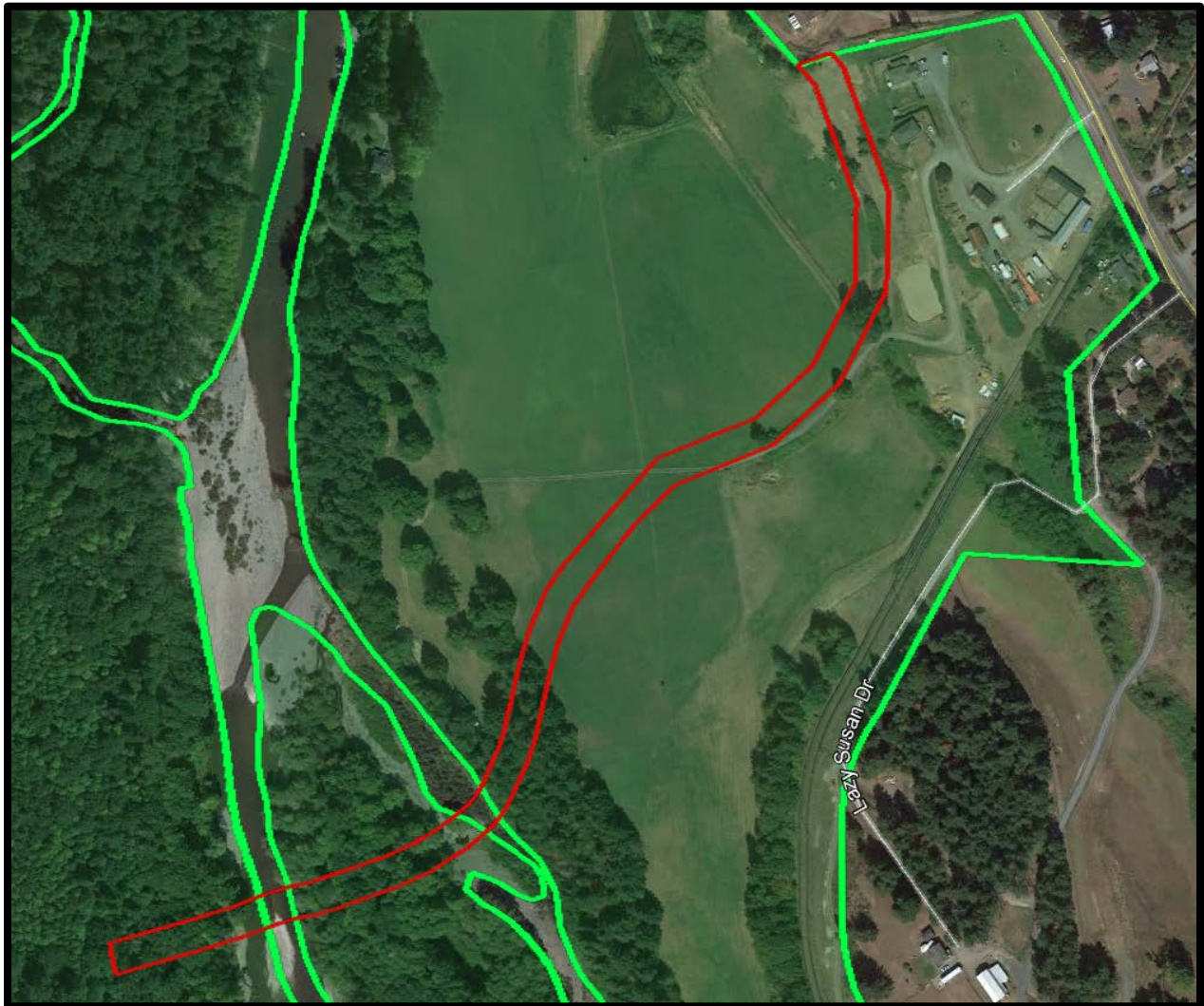




Schedule A: Agricultural Land Commission Decision Map
ALC File 54843 (Province of BC)
Conditionally Approved Recreational Trail
ALC Resolution #206/2018



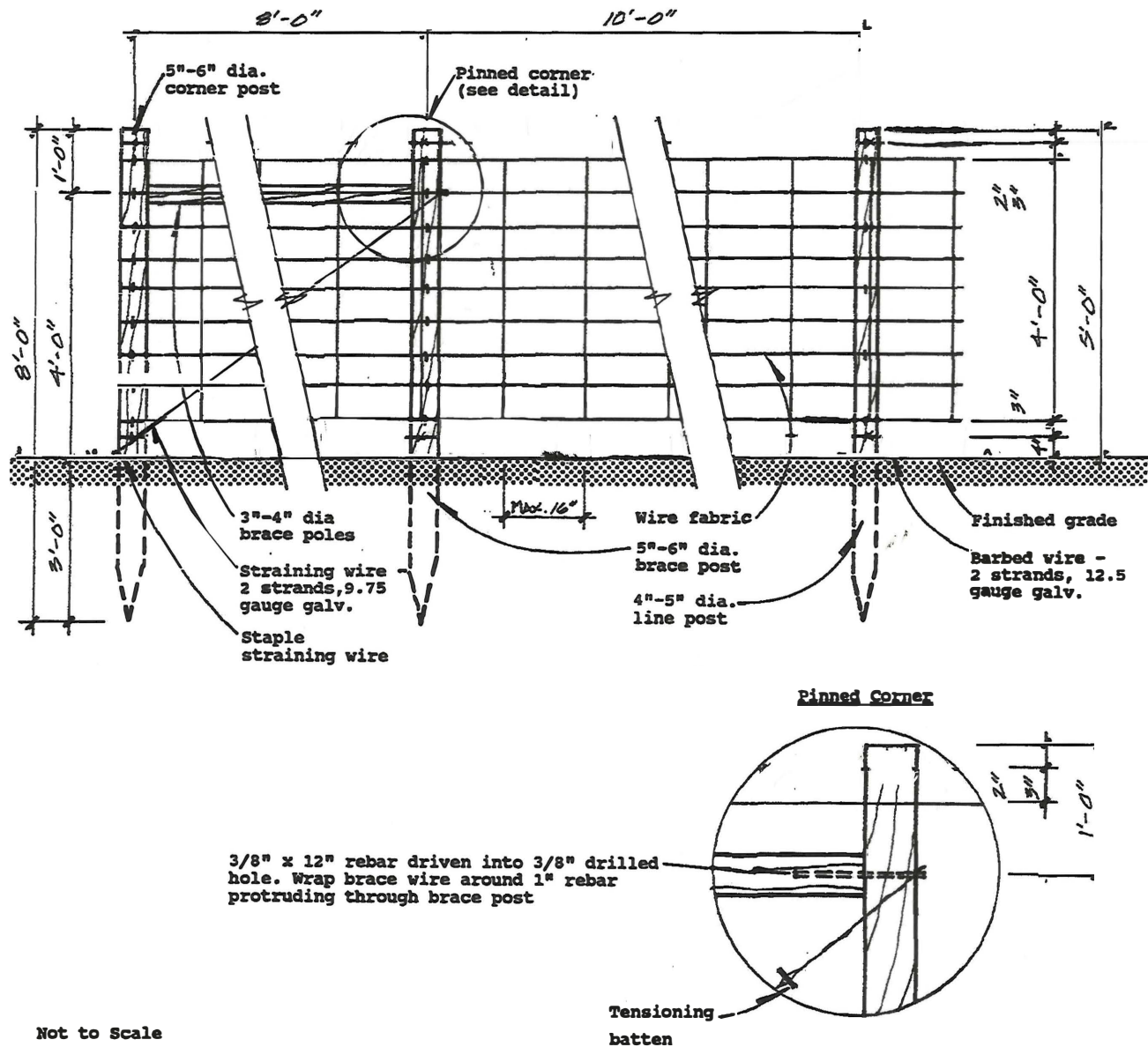
The Properties and Conditionally Approved
Recreational Trail (1.6 ha)



SPECIFICATIONS: WIRE FABRIC FENCE

1. The fence shall be constructed in accordance with these specifications and details provided in the attached drawing.
2. All posts and brace poles shall be pressure treated in accordance with CSA Standard 0805, using a wood preservative non-toxic to surrounding plant material and meet the following specifications:
 - 2.1. Line posts shall be 8.0 ft. in length and 4" - 5" in diameter.
 - 2.2. Corner and brace posts shall be 8.0 ft. in length and 5" - 6" in diameter.
 - 2.3. Bracing poles shall be 3" - 4" in diameter.
 - 2.4. All line and corner posts shall be machine pointed to permit driving of posts.
3. The wire mesh fencing material shall meet the following specifications:
 - 3.1. Minimum wire gauge - 12.5 A.W.G.
 - 3.2. Overall Height - 48"
 - 3.3. Min. number of horizontal strands: 9
 - 3.4. Max. spacing between horizontal strands - 8"
 - 3.5. Max. spacing between vertical - 16"
 - 3.6. Wire intersections of non-slip design
 - 3.7. Galvanized CSA G164
4. Brace wire shall meet the following specifications:
 - 5.1. Number of strands 2
 - 5.2. Minimum wire gauge 12.5 A.W.G.
 - 5.3. Galvanized
5. The staples used in fence construction shall meet the following specifications:
 - 6.1. Minimum wire gauge - 9.0 A.W.G.
 - 6.2. Minimum length - 1.75"
 - 6.3. Galvanized - CSA G164
6. Line posts shall be placed no more than 10.0 ft. apart and be firmly anchored in the soil to a depth not less than 30".
7. An intermediate brace assembly shall be constructed as shown in the attached drawing and spaced as required by terrain or every 660.0 ft.
8. Wire mesh shall be stretched and securely attached by staples at each wire intersection with the brace assembly posts. At line posts, wire mesh shall be attached by staples at alternate wire intersections with posts (see attached drawing). Securely staple to line posts allowing for wire movement.

SPECIFICATIONS: WIRE FABRIC FENCE (DRAWING)



MINIMUM VEGETATIVE BUFFER SPECIFICATIONS

To provide visual screening and protection of farmland from trespass and vandalism.

