

**Danger tree removal and site restoration planned for
French Creek Estuary Nature Preserve**

The Regional District of Nanaimo (RDN) will be proceeding with danger tree work and site restoration in the French Creek Estuary Nature Preserve over the next several weeks.

A danger tree assessment was conducted on trees within striking distance of roads and houses as well as trees targeting well-used trails. The assessment identified 12 dead and dangerous trees along the park's perimeter as well as 12 trees within the southwest portion of the park and recommends their removal.

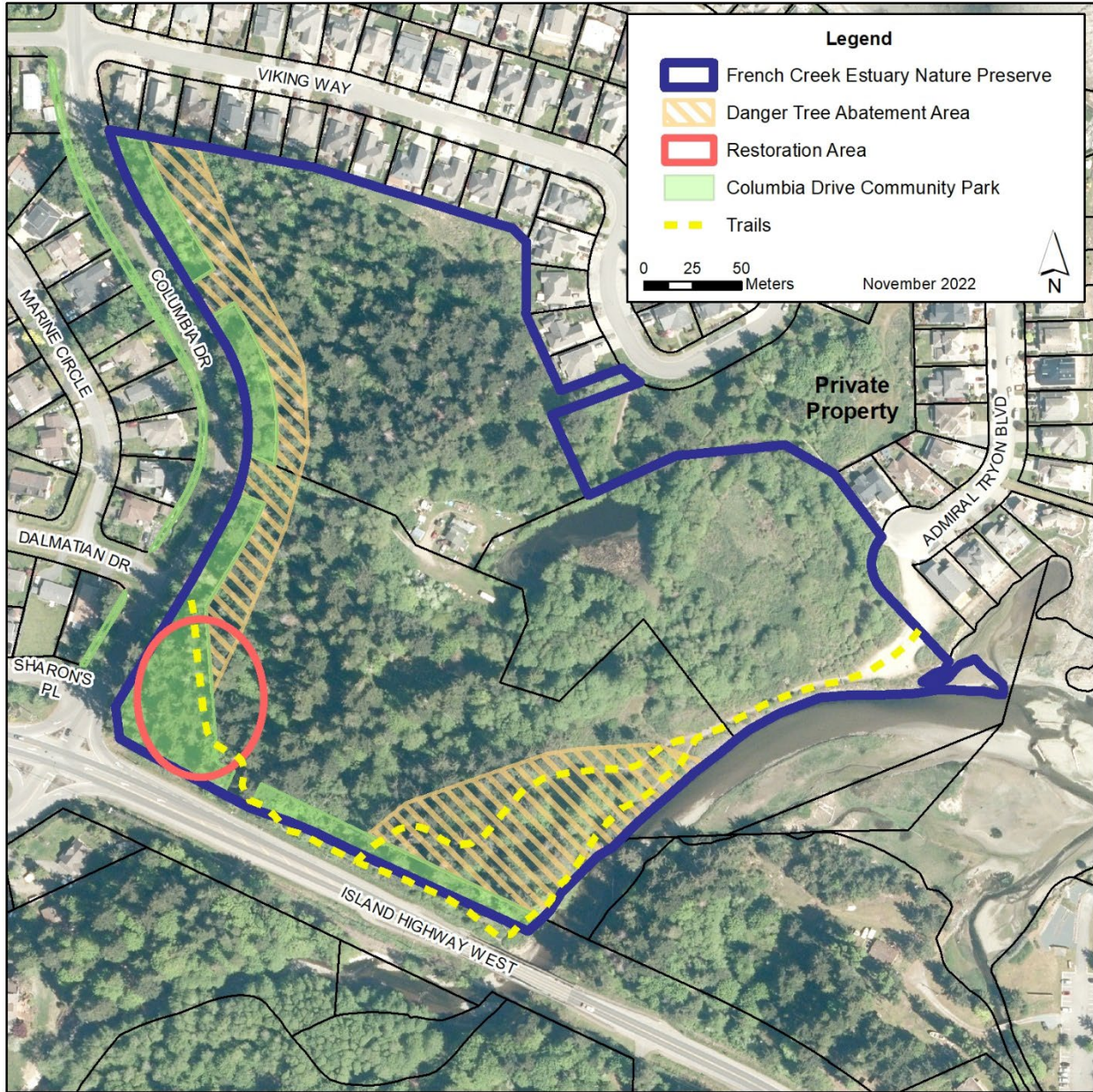
Minimizing environmental impacts is a priority. Where possible, a part of the tree will be left standing, and woody debris will be distributed in the forest to provide wildlife habitat and soil nutrients.

Site restoration will involve re-grading to remove the existing bike jumps, re-establishing a trail connection with Columbia Drive and installing split rail fencing to keep the area from being disturbed.

Tree work is expected to occur the week of November 21, 2022, and take two to three days to complete. Site restoration works are planned to begin the week of December 5 and take five days to complete.

Temporary road closures and periodic park trail closures will be in effect during tree removals. The west corner of the park will remain closed until the site restoration is complete. Please refer to the accompanying map and, for your safety, obey personnel and signs posted on site.

Get Involved RDN!



For more information, please contact:

RDN Parks Services
 Regional District of Nanaimo

☎ 250-248-4744
 ✉ recparks@rdn.bc.ca

Get Involved RDN!