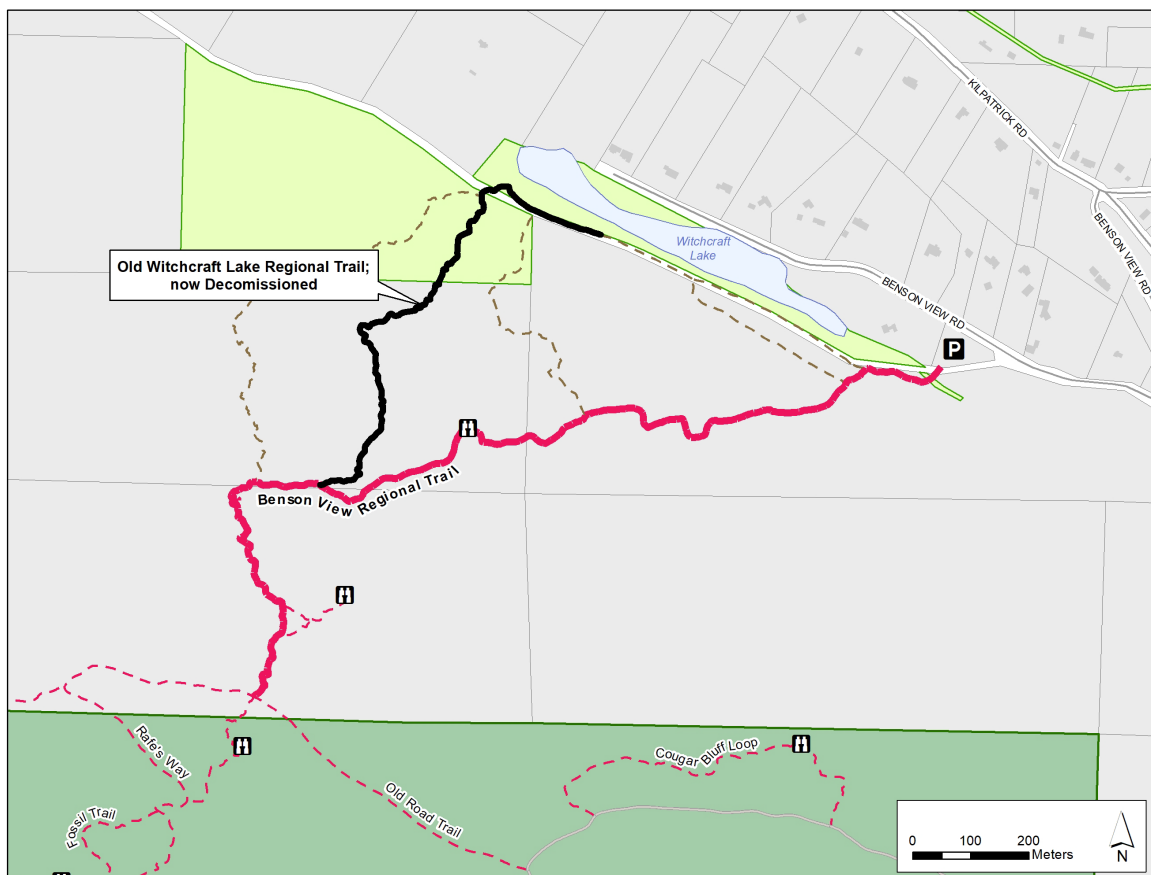


Old Witchcraft Lake Regional Trail Decommissioned



The Witchcraft Lake Regional Trail has been decommissioned. High use of this area resulted in trail widening, substantial erosion and vegetation loss. Trail closure signs have been installed at the lower and upper sections of the closed trail and the orange trail markers have been removed.

The official trail to Mount Benson Regional Park is the Benson View Regional Trail. Trails outside of Mount Benson Regional Park (the regional park is the green area on the map) are not managed by the RDN.



For more information, please contact:

Parks Services
Regional District of Nanaimo

 250-248-4744
 rdnparcs@rdn.bc.ca

Get Involved RDN!