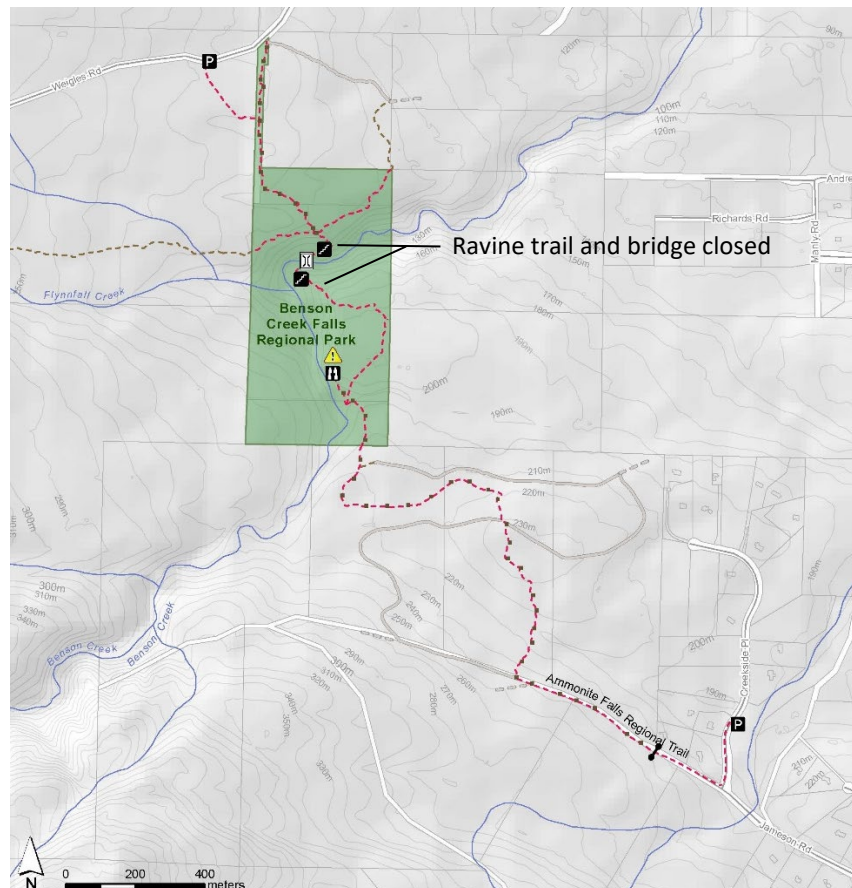




## Benson Creek Falls Temporary Trail Closed until May 18, 2022

The closure of the ravine trail for further trail upgrades has been extended to Wednesday, May 18. The public will be able to access the trail once again on May 19. Please note that park users will not be able to access Ammonite Falls or the truss bridge from the Weigles Road parking lot during this time. For your safety, please be alert to construction activity and obey personnel and signs posted on site.



### For more information, please contact:

Parks Services  
Regional District of Nanaimo

 1-888-828-2069  
 [rdnparks@rdn.bc.ca](mailto:rdnparks@rdn.bc.ca)

Get Involved RDN!