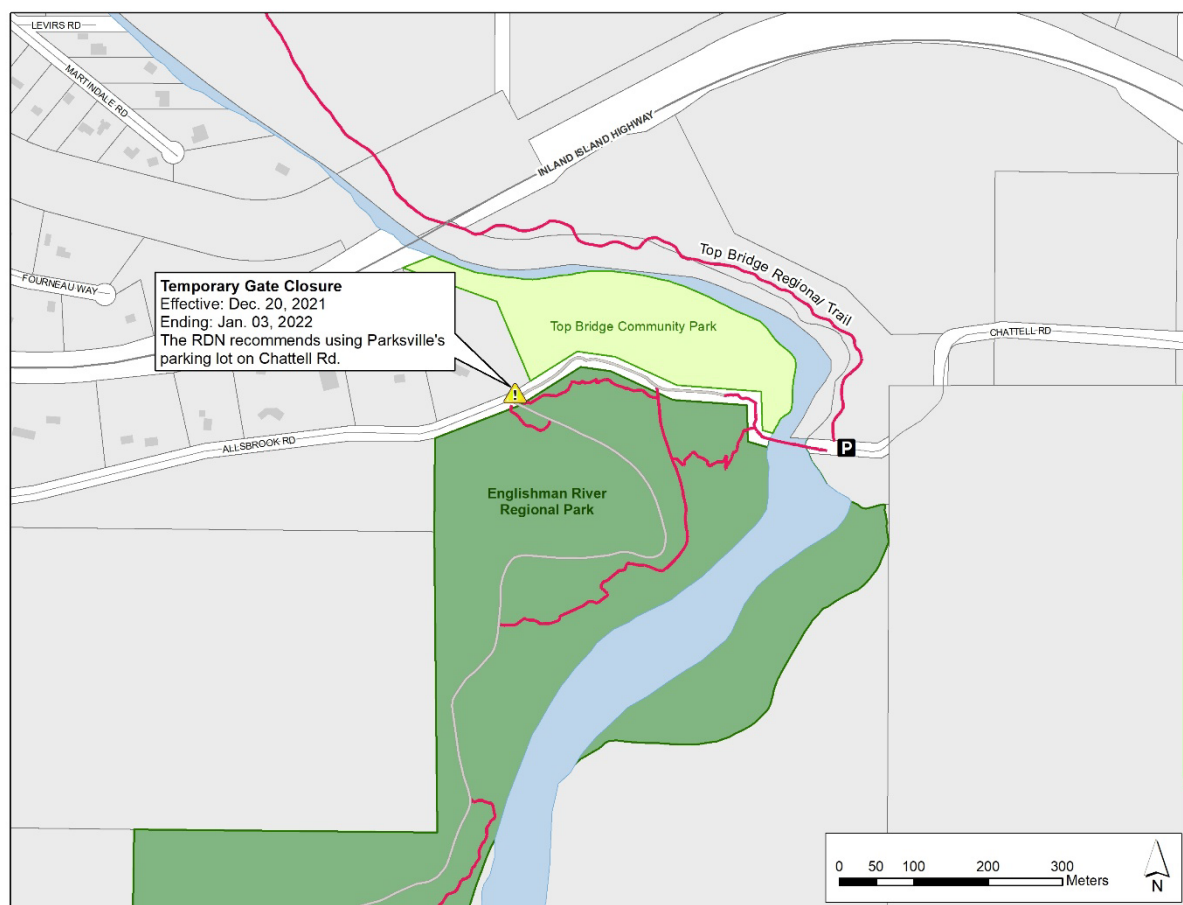


Top Bridge Regional Trail - Allsbrook Road Gate Temporary Closure

December 20, 2021 – January 3, 2022

The Allsbrook Road gate to the parking lot at Top Bridge Regional Trail will be locked on Monday, December 20, 2021. The closure is expected to last for two weeks until Monday, January 3, 2022. The road into the park from the Allsbrook side will be graded and the parking lot will be resurfaced with gravel. These upgrades will improve the visitor experience at this popular swimming and hiking destination. There will be heavy equipment on site and visitors are asked to access the trail via the City of Parksville's parking lot on the east side of the river. This access is at the end of Chattell Road.



Get Involved RDN!

For more information, please contact:

Parks Services

Regional District of Nanaimo



1-888-828-2069



rdnparks@rdn.bc.ca

Get Involved RDN!

www.rdn.bc.ca