



REQUEST FOR TENDER No. 21-073

Jack Bagley Community Park Redevelopment

Addendum 3 (3 pages)

Issued: November 2, 2021

**Closing Date & Time: on or before 3:00 PM Pacific Time on
November 15, 2021**

This addendum shall be read in conjunction with and considered as an integral part of the Request for Tender. Revisions supersede the information contained in the original Tender or previously issued Addendum. No consideration will be allowed for any extras due to any Vendor not being familiar with the contents of this Addendum. All other terms and conditions remain the same.

Attachments:

1. Plan showing the proposed location of a 19mm water service to supply the drinking water fountain in the plaza.
2. New waste bin SP-HBIIS-PY specifications.

Clarifications:

- Delete the garbage bin HBIS-Standard SP-HBIS-N located on asphalt adjacent to the sport court fencing (north plaza area).
- Delete the garbage bin HBIS-Standard SP-HBIS-N located adjacent to the drinking fountain.
- Add a double-bin SP-HBIIS-PY (1 garbage bin, 1 recycling bin) adjacent to the drinking fountain. Extend drinking fountain concrete slab by approximately 1m² for installation of the double-bin; OR install on pre-cast mounting pad (HBII-572) as shown on Attachment 2.

Reminder:

Bidders must supply with their Tenders a **verifiable digital Bid Bond (e-bond)** and a **verifiable digital Consent of Surety** as defined by the Surety Association of Canada. Scanned copies are not acceptable. <https://suretycanada.com/SAC/Surety-Bonds/E-Bonding.aspx>

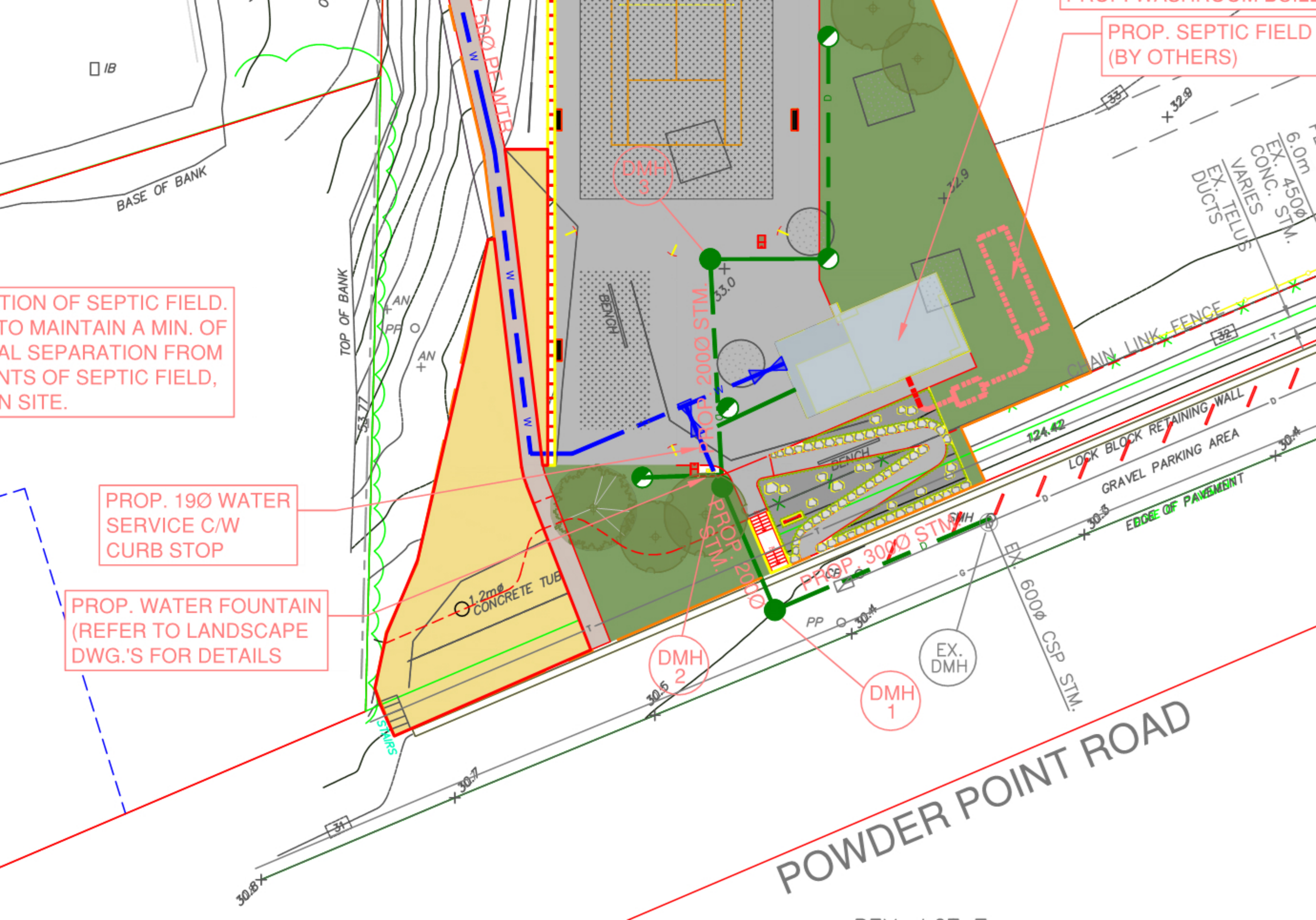
End of Addendum 3

LOCATION OF SEPTIC FIELD.
TO MAINTAIN A MIN. OF
SEPARATION FROM
EXISTING SEPTIC FIELD,
ON SITE.

PROP. 190 WATER
SERVICE C/W
CURB STOP

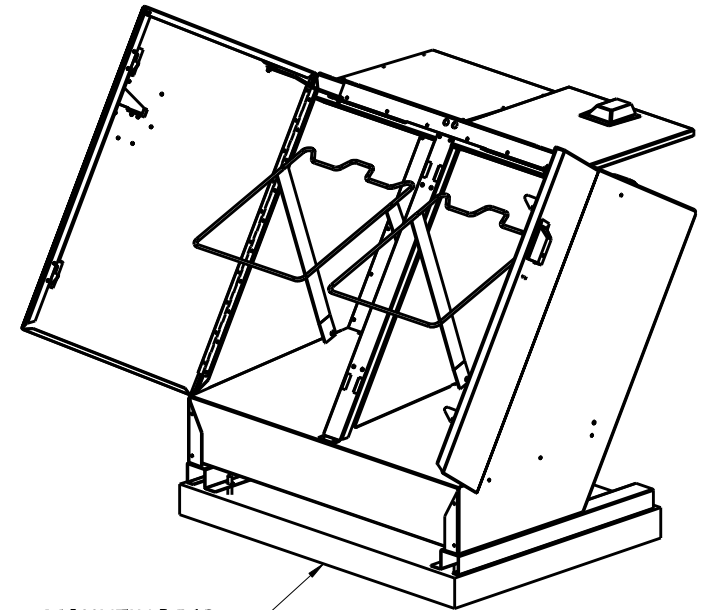
PROP. WATER FOUNTAIN
(REFER TO LANDSCAPE
DWG.'S FOR DETAILS)

PROP. SEPTIC FIELD
(BY OTHERS)

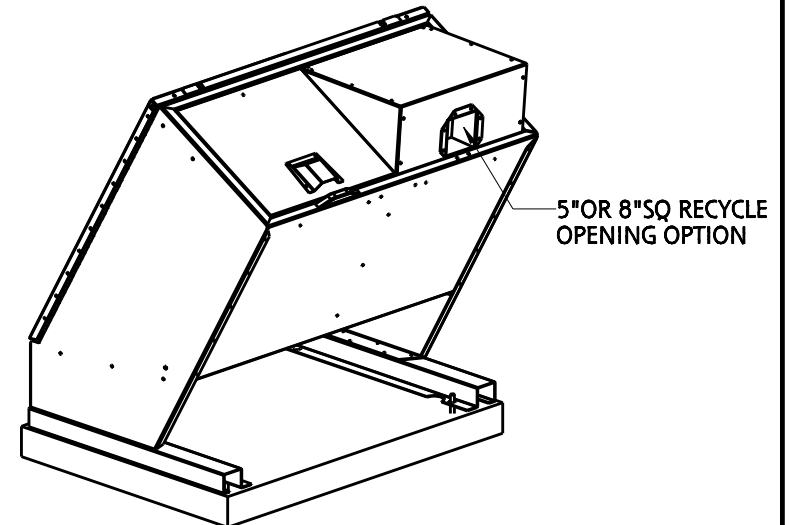


FEATURE	DESCRIPTION	SPECIFICATION
Capacity	Tilt Out Bag Cage 2-Poly Bags	17-1/2 cu.ft. 130 US Gallons (500L) 2.5 mil 42 x 50 (1070 x 1270)
Construction	Housing	12 Ga. (2.6) Galvanneal Steel
	Lid	14 Ga. (1.9) Galvanneal Steel
	User Door	14 Ga. (1.9) Galvanneal Steel
	Side Hinged Unloading Door	14 Ga. (1.9) Galvanneal Steel
	Hinges and Latches	Stainless Steel
	Paint	Powder Coat
Weights	Standard Hid-A-Bag II	325lbs (150kg)
(Optional)	Pre-Cast Mounting Pad (HBII-572)	595lbs (270kg) 48 x 36 x 4 (1220 x 915 x 102)

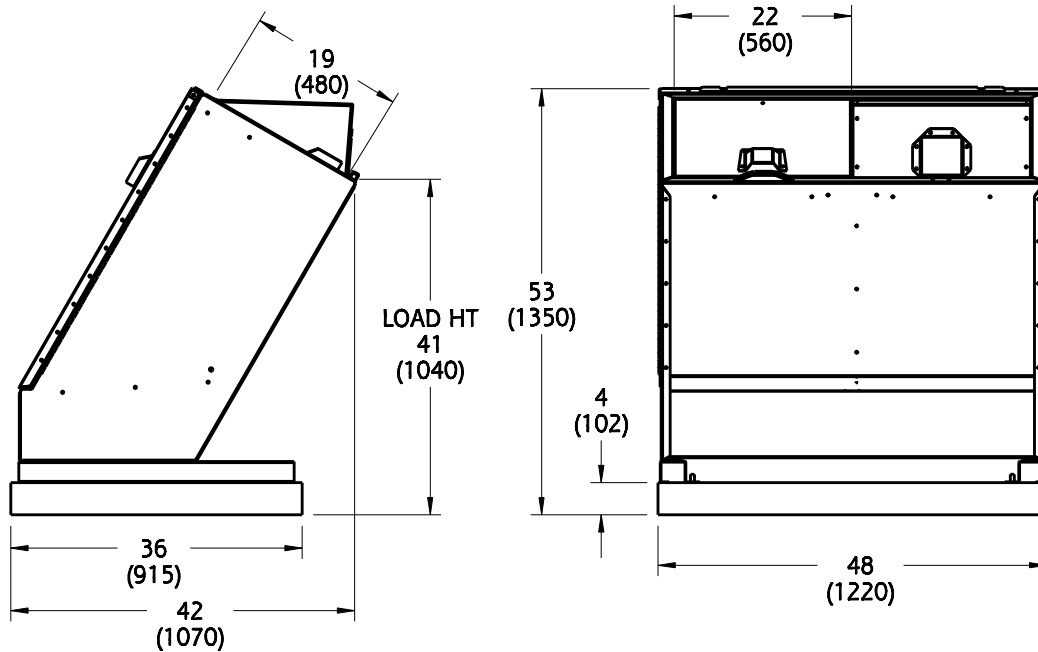
ALL SPECIFICATIONS SUBJECT TO CHANGE WITHOUT NOTICE




MOUNTING PAD (OPTIONAL)



5"OR 8"SQ RECYCLE OPENING OPTION



NOTE: ALL DIMENSIONS INCHES (MILLIMETERS)

TRAILER SIZE	QTY	<p>HAUL-ALL EQUIPMENT LTD. reserves proprietary rights on this drawing or any part of the information contained thereon. This drawing shall be considered confidential material and is not to be used for competitive bidding nor for use in any procurements other than from Haul-All Equipment Ltd.</p> 	NAME HBIIS WASTE/RECY. BP CONTAINER		
8-1/2ft x 45ft Long	30		PART NUMBER	SP-HBIIS-PY	DRAWN BY PS
8-1/2ft x 53ft Long	36		DATE	AUGUST 17, 2016	REVISION 1
B-Train	36				
Double Decker Van 8-1/2ft x 48ft	64				