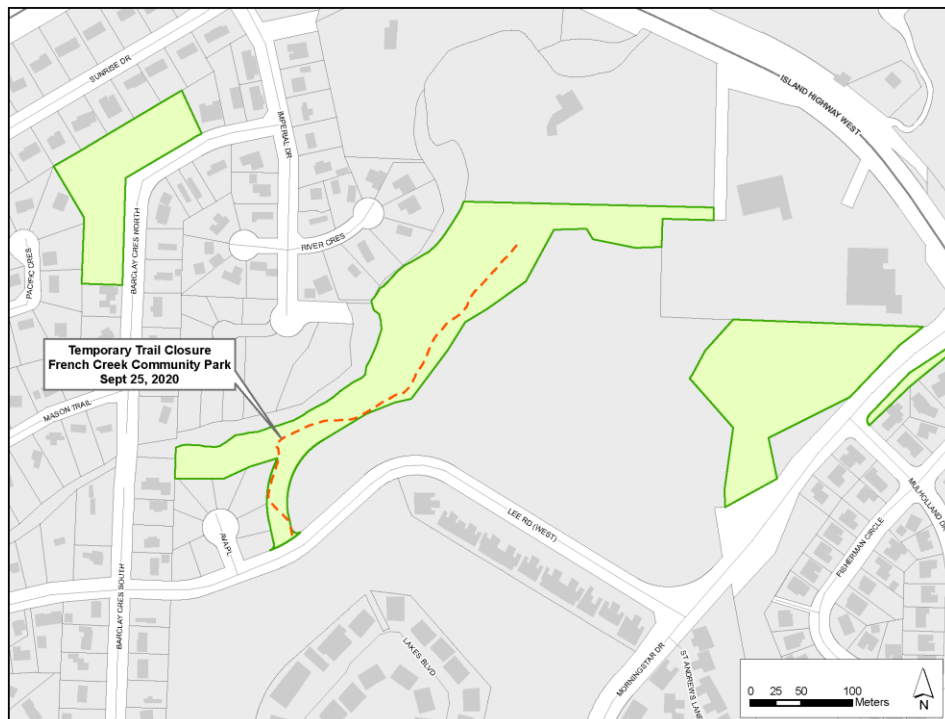


French Creek Community Park - Temporary Trail Closure


We apologize for the location error in our September 22, 2020 Parks & Trails Alert. The trail through French Creek Community Park, in RDN Electoral Area G, is closed until further notice to allow logging work to be performed on the neighbouring private properties.

Although the logging work is being done by a private developer/contractor and is taking place on private lands, trail access and use are directly impacted. The trail will remain closed for the safety of the public until the completion of the work.



For more information, please contact:

Parks Services
Regional District of Nanaimo

 1-888-828-2069

 rdn_parks@rdn.bc.ca

Get Involved RDN!