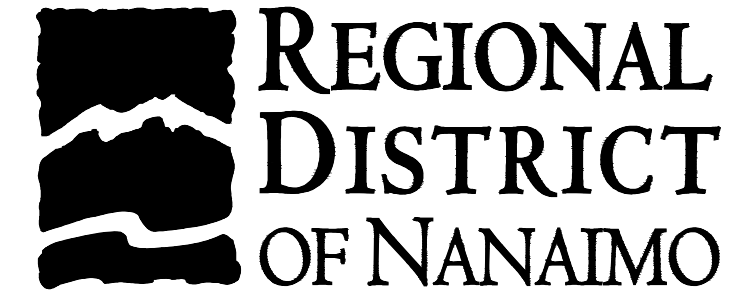


PREPARED BY:



WELDON PROFESSIONAL CENTRE  
SUITE 201 - 177 WELD STREET  
PO Box 89  
Parksville, BC V9P 2G3

Phone: 250-248-2001  
FAX: 250-248-2553  
email: info@tjeng.ca  
URL: www.tjeng.ca



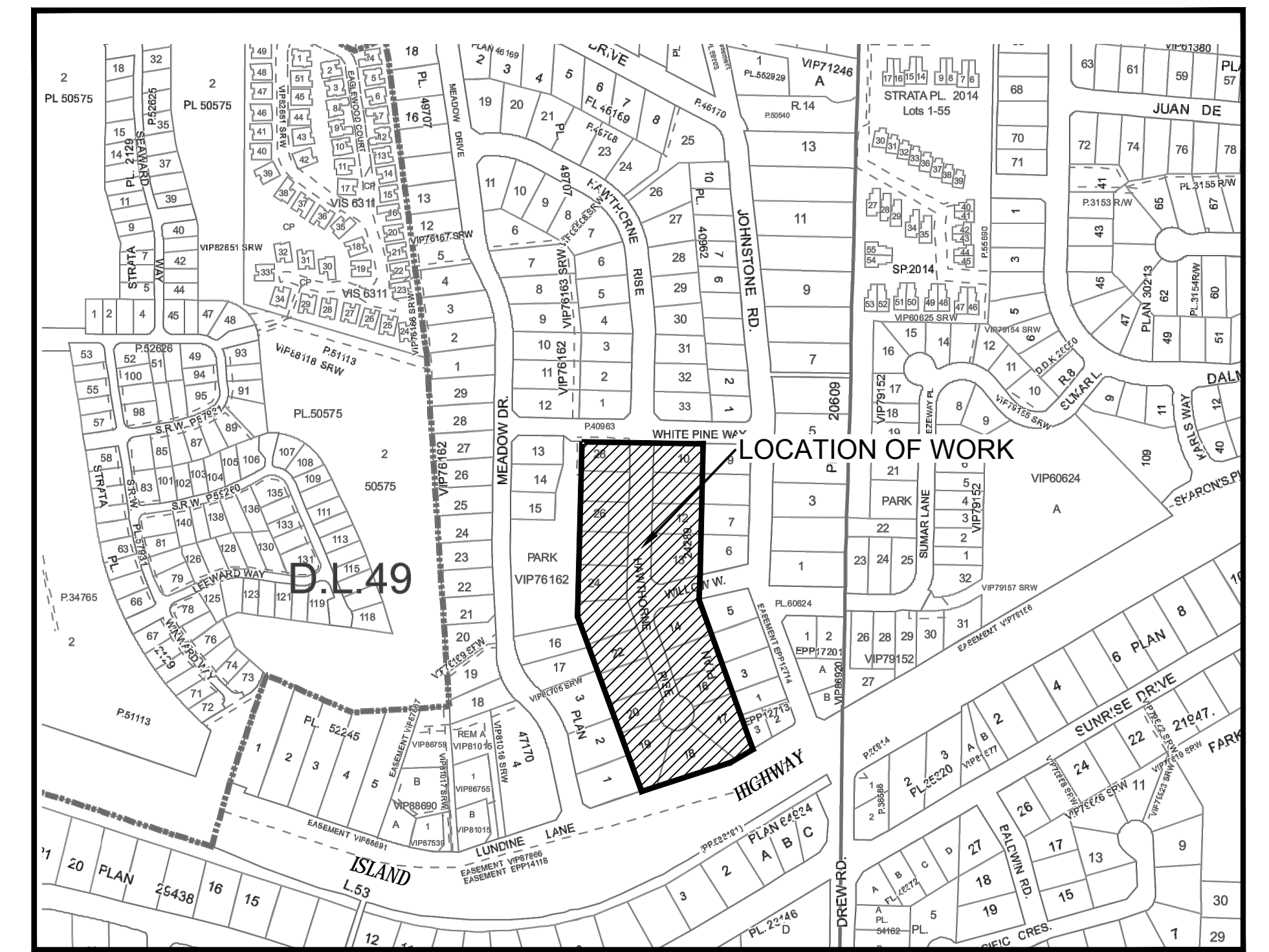
CLIENT:  
**REGIONAL DISTRICT OF NANAIMO**

6300 Hammond Bay Road,  
Nanaimo, B.C.  
V9T 6N2

PROJECT:  
**HAWTHORNE RISE SANITARY SEWER EXTENSION,  
FRENCH CREEK**



**SITE PLAN  
SCALE 1:1000**



**LOCATION PLAN  
NTS**

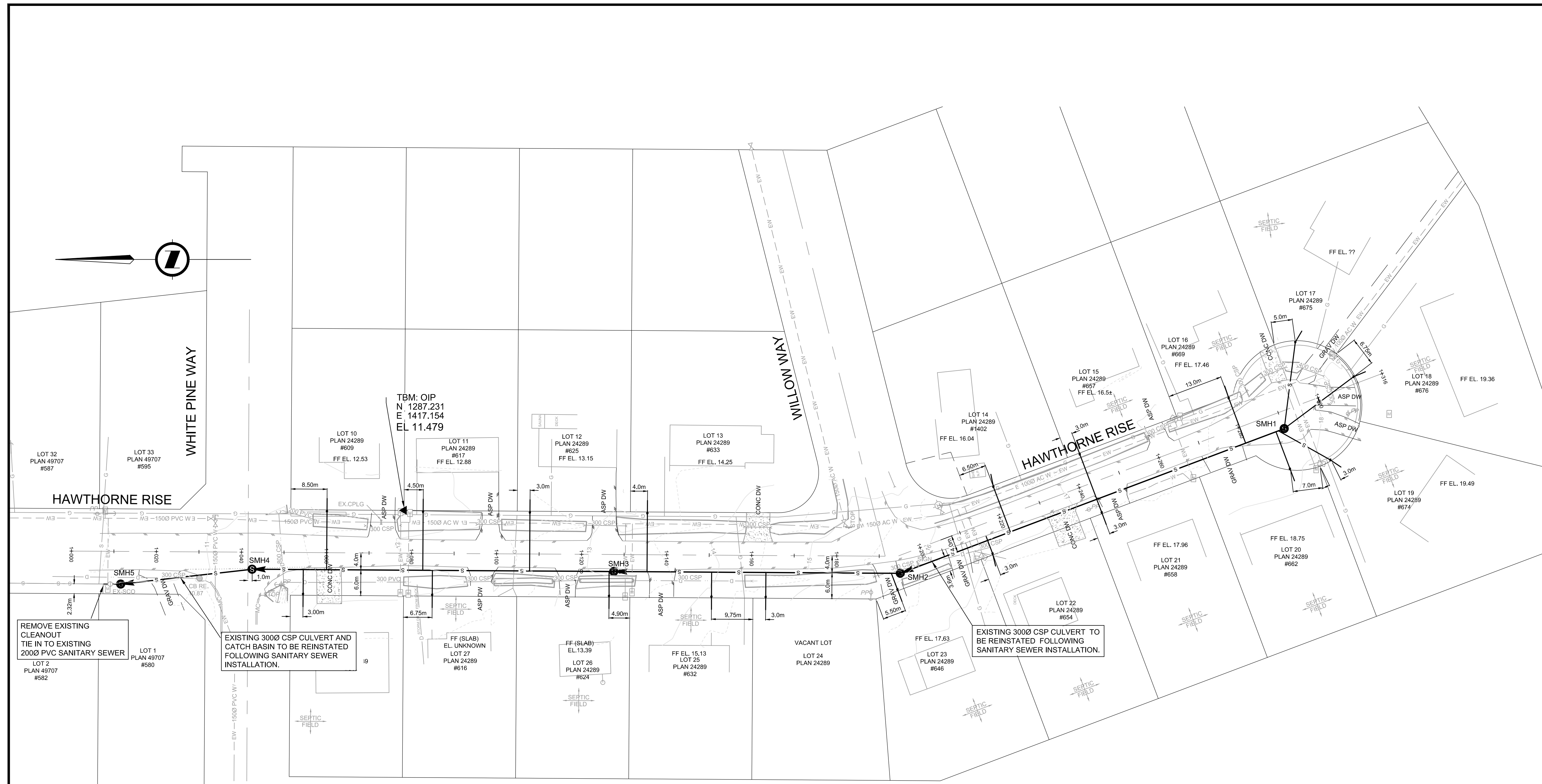
DRAWING INDEX		
DRAWING NUMBER	REV	SHEET TITLE
0276-01-00	B	COVER SHEET
0276-01-01	B	KEY PLAN
0276-01-02	B	PLAN AND PROFILE - SMH 1 TO SMH 5
0276-01-03	B	TYPICAL DETAILS



All work done in connection with these specifications and drawings must comply with the Industrial Health and Safety Regulations of the Workers' Compensation Board.

NOTE: LOCATION OF EXISTING SERVICES ARE SHOWN APPROXIMATELY AND MUST BE CHECKED IN THE FIELD BY THE CONTRACTOR PRIOR TO COMMENCEMENT OF WORK. THE ENGINEER IS TO BE NOTIFIED IMMEDIATELY OF ANY CONFLICTS.

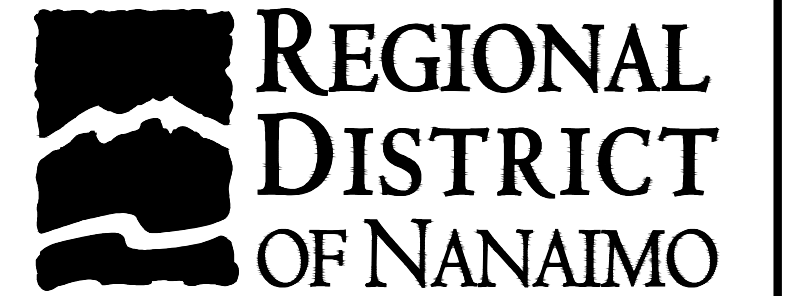
REGIONAL DISTRICT OF NANAIMO PROJECT No. **5500-20-HR-18-7570**  
TIMBERLAKE-JONES ENG. PROJECT No. **0276-01**  
DRAWING No. **0276-01-00**



- NOTES:**
- ELEVATIONS ARE NOT GEODETIC.
  - THE LOCATIONS OF EXISTING SERVICES ARE SHOWN APPROXIMATELY AND MUST BE CHECKED IN THE FIELD BY THE CONTRACTOR PRIOR TO COMMENCEMENT OF WORK. SERVICES MAY REQUIRE ADJUSTMENT WHERE A CONFLICT OCCURS. THE ENGINEER IS TO BE NOTIFIED IMMEDIATELY OF ANY CONFLICT.
  - IF VERTICAL SEPARATION OF > 0.5m CANNOT BE MAINTAINED BETWEEN THE WATERMAIN AND SANITARY SEWER/STORM DRAIN CROSSINGS ALL JOINTS WITHIN 3.0m OF CROSSINGS TO BE SECURED WITH PETROLATUM TAPE OR SHRINK-WRAP AS PER MINISTRY OF HEALTH SPECIFICATIONS.
  - ROADWORKS TO CONFORM TO M.O.T.I. STANDARDS.
  - SANITARY SEWERS TO CONFORM TO REG. DIST. OF NANAIMO STANDARDS.
- SANITARY SEWERS - PVC SDR 35, ASTM D3034  
 SANITARY SERVICES - 1000 PVC SDR 28, ASTM D3034
- MINIMUM COVER ON SANITARY SEWERS IN TRAVELLED AREAS - 1.5m  
 MINIMUM COVER ON SANITARY SEWERS IN UNTRAVELLED AREAS - 1.0m
- PRIOR TO FINAL PAVING, SANITARY SEWERS TO BE "POWER-JET" FLUSHED AND VIDEO INSPECTED. VIDEO INSPECTION TO OCCUR WITHIN TWENTY-FOUR (24) HOURS OF FLUSHING.

LEGEND	
EXISTING	PROPOSED
— MC or NMC	EDGE OF PAVEMENT
—	CURBS
—	EDGE OF GRAVEL
—	WATER MAIN
—	STORM SEWER
—	SANITARY SEWER
—	CENTRELINE
—	PROPERTY LINE
—	FENCE LINE
—	DITCH

EXISTING	PROPOSED	EXISTING	PROPOSED
CB	CATCH BASIN	CB	CATCH BASIN
LB	LAWN BASIN	LB	LAWN BASIN
PP	POWER POLE	PP	POWER POLE
TP	TELEPHONE POLE	TP	TELEPHONE POLE
B	BENCHMARK	B	BENCHMARK
FH	HYDRANT	FH	HYDRANT
FHV	HYDRANT W/ VALVE	FHV	HYDRANT W/ VALVE
CO	CLEANOUT	CO	CLEANOUT
DM	STORM MANHOLE	DM	STORM MANHOLE
SM	SANITARY MANHOLE	SM	SANITARY MANHOLE
AV	AIR VALVE	AV	AIR VALVE
V	VALVE	V	VALVE
S	SERVICE LOCATION	S	SERVICE LOCATION



All work done in connection with these specifications and drawings must comply with the Industrial Health and Safety Regulations of the Workers' Compensation Board.

NOTE: LOCATION OF EXISTING SERVICES ARE SHOWN APPROXIMATELY AND MUST BE CHECKED IN THE FIELD BY THE CONTRACTOR PRIOR TO COMMENCEMENT OF WORK. THE ENGINEER IS TO BE NOTIFIED IMMEDIATELY OF ANY CONFLICTS.

**STANDARD ABBREVIATIONS**

AC	ASBESTOS CEMENT	H	HUB
DI	DUCTILE IRON	F	FLANGE
ST	STEEL	IPT	IRON PIPE THREAD
PVC	POLYVINYL CHLORIDE	CSP	CORRUGATED STEEL PIPE
PE	POLYETHYLENE		

LEGAL DESCRIPTION:  
 BENCHMARK:  
 TBM - OIP CORNER LOT 10/11, PLAN 24289, HAWTHORNE RISE, EL. 11.479 NOT GEODETIC

REV	DATE	REVISIONS	BY
B	8/01/14	ISSUED FOR TENDER	CH
A	12/12/13	FOR APPROVAL	RA

SEAL:

THIS PLAN AND DESIGN ARE AND AT ALL TIMES REMAIN THE EXCLUSIVE PROPERTY OF TIMBERLAKE-JONES ENGINEERING LTD. AND CANNOT BE USED OR REPRODUCED WITHOUT WRITTEN CONSENT. THIS PLAN IS PREPARED FOR THE SOLE USE OF OUR CLIENT AND NO REPRESENTATION OF ANY KIND IS MADE TO OTHER PARTIES WITH WHICH TIMBERLAKE-JONES ENGINEERING LTD. HAS NOT ENTERED INTO CONTRACT. WRITTEN DIMENSIONS SHALL HAVE PRECEDENCE OVER SCALED DIMENSIONS. CONTRACTORS SHALL VERIFY AND BE RESPONSIBLE FOR ALL DIMENSIONS AND CONDITIONS ON THE JOB AND THIS OFFICE SHALL BE INFORMED OF ANY VARIATIONS FROM THE DIMENSIONS AND CONDITIONS SHOWN ON THIS DRAWING.

DESIGN:	MTJ	SCALE:	1:500
DRAWN:	RA	DATE:	December 2, 2013
CHECKED:	MTJ	DATE PLOTTED:	09/01/2014
APPROVED:	MTJ	FILENAME:	0276-BASE.DWG

Prepared by:

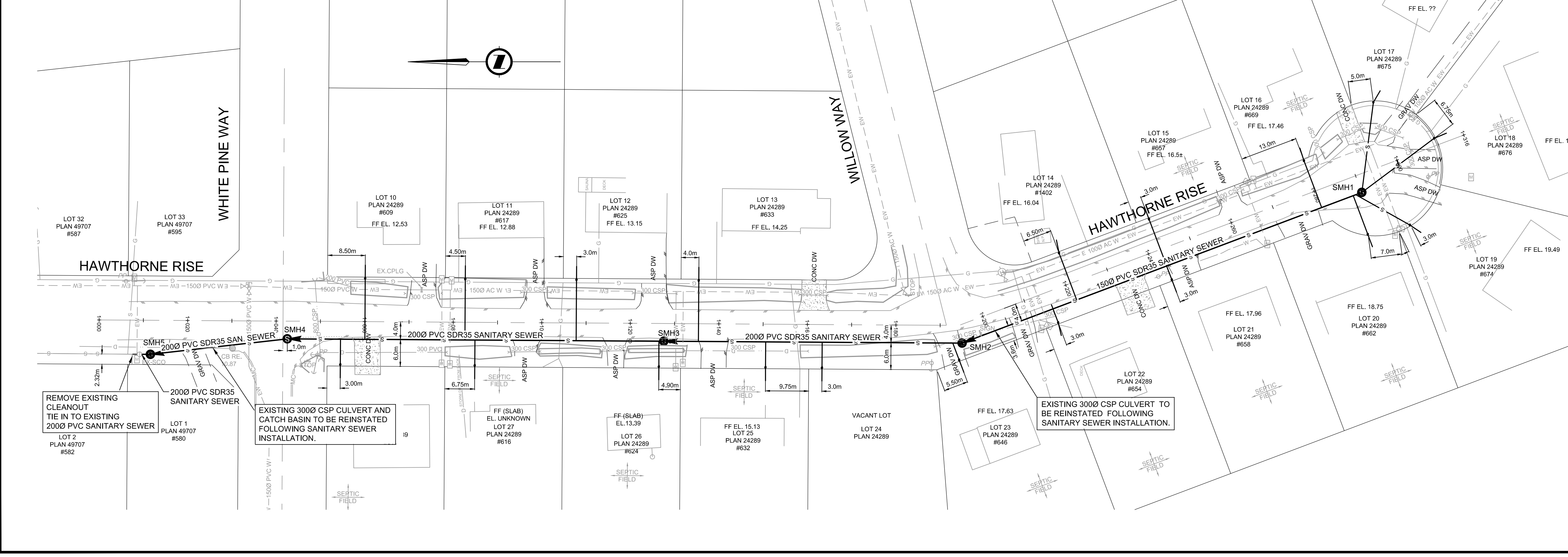
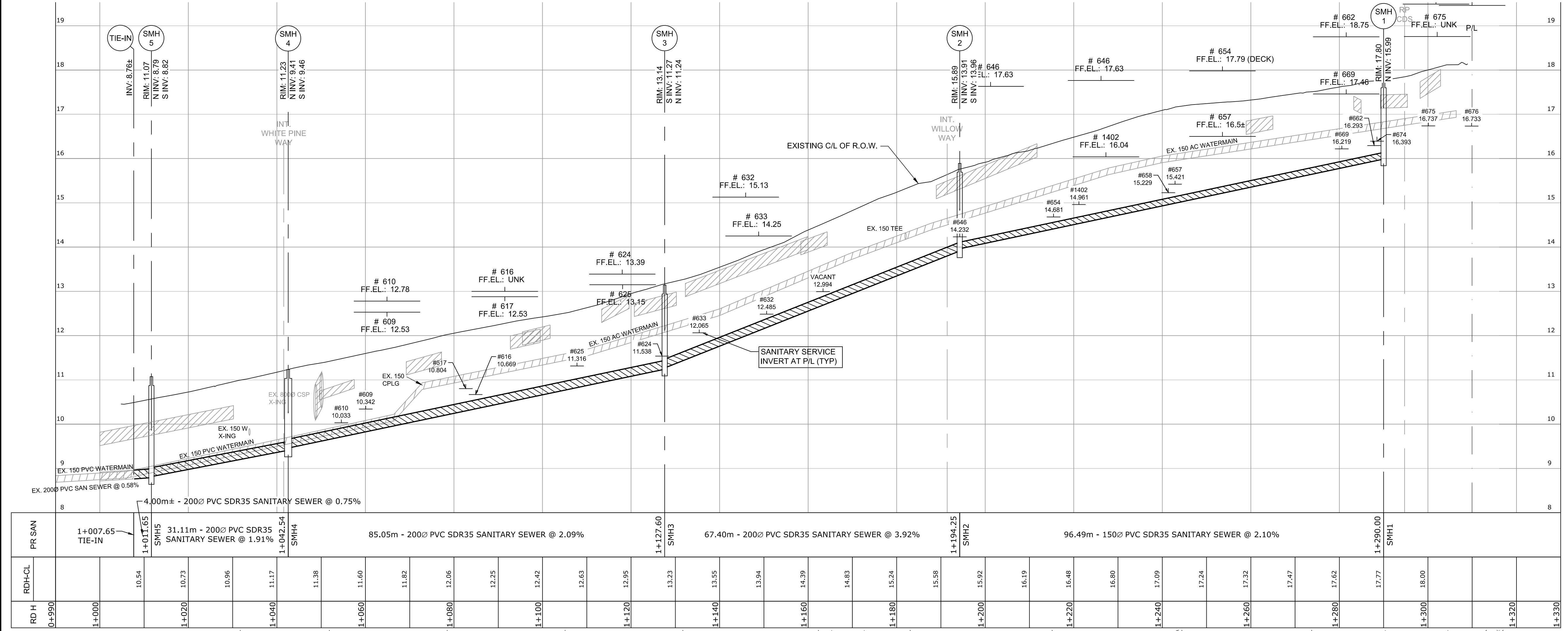
Weldon Professional Centre  
 Suite 201 - 177 Weld Street  
 PO Box 89  
 Parksville, BC, V9P 2G3  
 Phone: 250-248-2001  
 Fax: 250-248-2553  
 Email: info@tjeng.ca  
 URL: www.tjeng.ca

Client Name: **REGIONAL DISTRICT OF NANAIMO**

Project Name: **HAWTHORNE RISE SANITARY SEWER EXTENSION**

Drawing Title: **KEY PLAN**

Project Number:	Drawing Number:	Revision:
5500-20-HR-18-7570	0276-01-01	B



### LEGEND

EXISTING	PROPOSED
—	—
—	—
—	—
—	—
—	—
—	—
—	—
—	—
—	—
—	—

EXISTING	PROPOSED	EXISTING	PROPOSED
CB	CB	VALVE	VALVE
LB	LB	SL	SL
PP	PP	SP	SP
TP	TP	TP	TP
BH	BH	BH	BH
HP	HP	HP	HP
CO	CO	CO	CO
SM	SM	SM	SM
AM	AM	AM	AM



All work done in connection with these specifications and drawings must comply with the Industrial Health and Safety Regulations of the Workers' Compensation Board.

NOTE: LOCATION OF EXISTING SERVICES ARE SHOWN APPROXIMATELY AND MUST BE CHECKED IN THE FIELD BY THE CONTRACTOR PRIOR TO COMMENCEMENT OF WORK. THE ENGINEER IS TO BE NOTIFIED IMMEDIATELY OF ANY CONFLICTS.

### STANDARD ABBREVIATIONS

AC	ASBESTOS CEMENT	H	HUB
DI	DUCTILE IRON	F	FLANGE
ST	STEEL	IPT	IRON PIPE THREAD
PVC	POLYVINYL CHLORIDE	CSP	CORRUGATED STEEL PIPE
PE	POLYETHYLENE		

LEGAL DESCRIPTION:  
 REM. LOT A, PLAN V171091 & REM. LOT 1, PLAN 6267, LD 85, NEWCASTLE DISTRICT

BENCHMARK:  
 TBM - OIP CORNER LOT 10/11, PLAN 24289, HAWTHORNE RISE, EL. 11.479 NOT GEODETIC

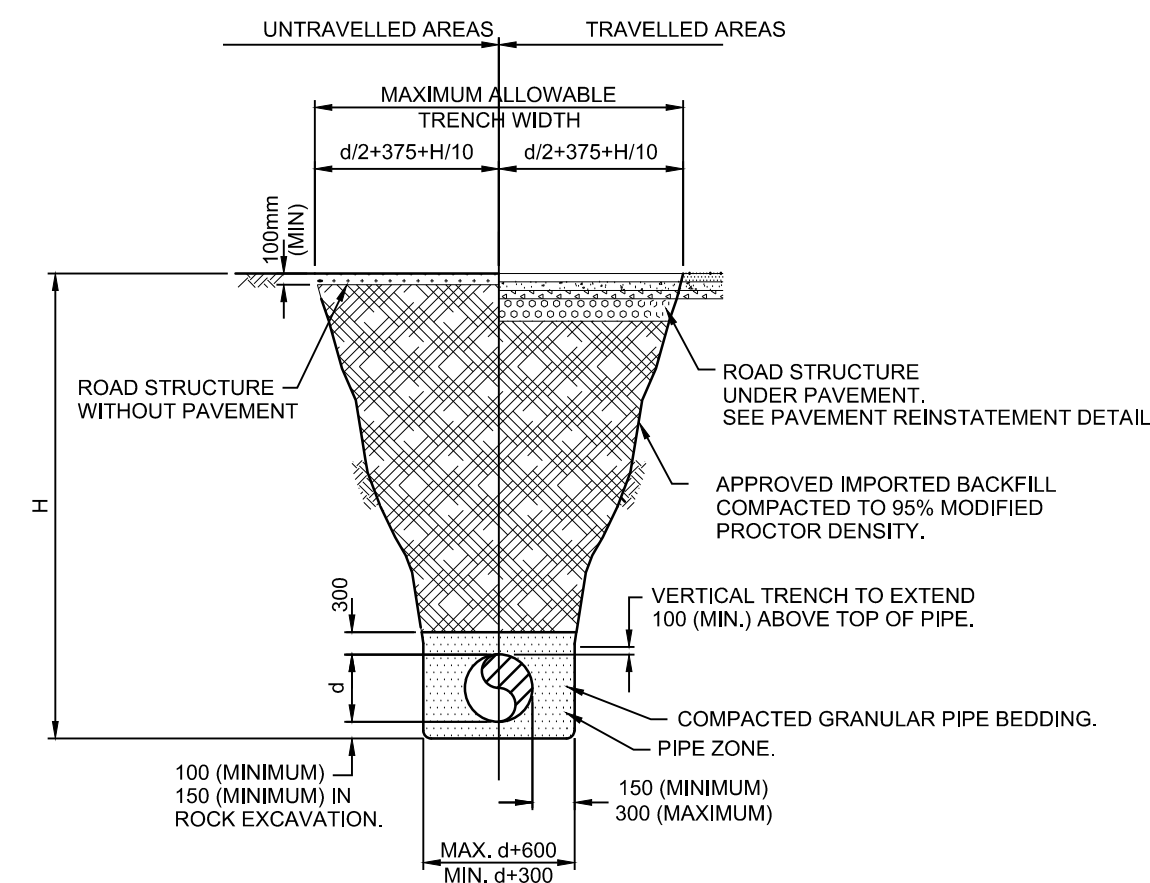
REV	DATE	REVISIONS	BY
B	8/01/14	ISSUED FOR TENDER	CH
A	12/12/13	FOR APPROVAL	RA

SEAL: THIS PLAN AND DESIGN ARE AND AT ALL TIMES REMAIN THE EXCLUSIVE PROPERTY OF TIMBERLAKE-JONES ENGINEERING LTD. AND CANNOT BE USED OR REPRODUCED WITHOUT WRITTEN CONSENT. THIS PLAN IS PREPARED FOR THE SOLE USE OF OUR CLIENT AND NO REPRESENTATION OF ANY KIND IS MADE TO OTHER PARTIES WITH WHICH TIMBERLAKE-JONES ENGINEERING LTD. HAS NOT ENTERED INTO CONTRACT. WRITTEN DIMENSIONS SHALL HAVE PRECEDENCE OVER SCALED DIMENSIONS. CONTRACTORS SHALL VERIFY AND BE RESPONSIBLE FOR ALL DIMENSIONS AND CONDITIONS ON THE JOB AND THIS OFFICE SHALL BE INFORMED OF ANY VARIATIONS FROM THE DIMENSIONS AND CONDITIONS SHOWN ON THIS DRAWING.

DESIGN:	MTJ	SCALE:	HOR: 1:500 VERT: 1:50
DRAWN:	RA	DATE:	December 2, 2013
CHECKED:	MTJ	DATE PLOTTED:	09/01/2014
APPROVED:	MTJ	FILENAME:	0276-BASE.DWG

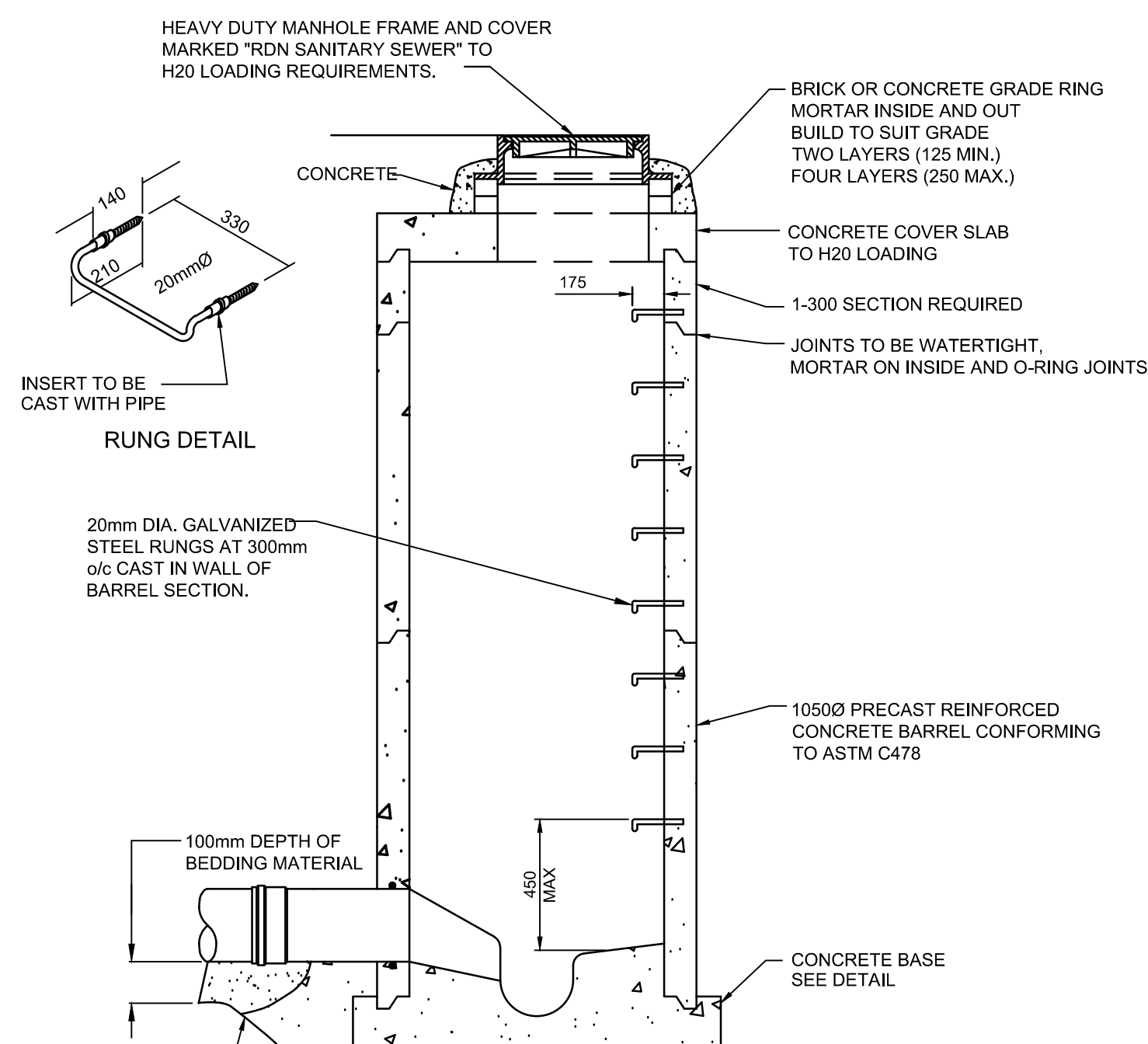
Prepared by:  
  
 Weldon Professional Centre  
 Suite 201 - 177 Weld Street  
 PO Box 89  
 Parksville, BC, V8P 2G3  
 Phone: 250-248-2001  
 Fax: 250-248-2553  
 Email: info@tjeng.ca  
 URL: www.tjeng.ca

Client Name:	<b>REGIONAL DISTRICT OF NANAIMO</b>		
Project Name:	<b>HAWTHORNE RISE SANITARY SEWER EXTENSION</b>		
Drawing Title:	<b>PLAN AND PROFILE SMH 1 TO SMH 5</b>		
Project Number:	5500-20-HR-18-7570	Drawing Number:	<b>0276-01-02</b>
Revision:			<b>B</b>

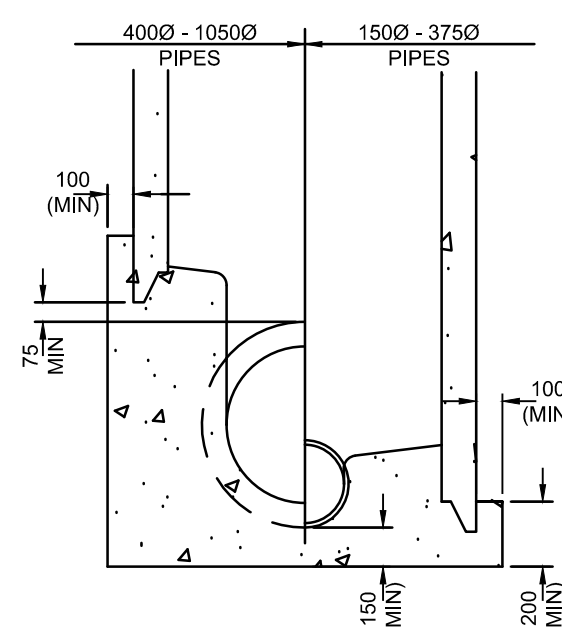


**TYPICAL TRENCH SECTION**  
N.T.S.

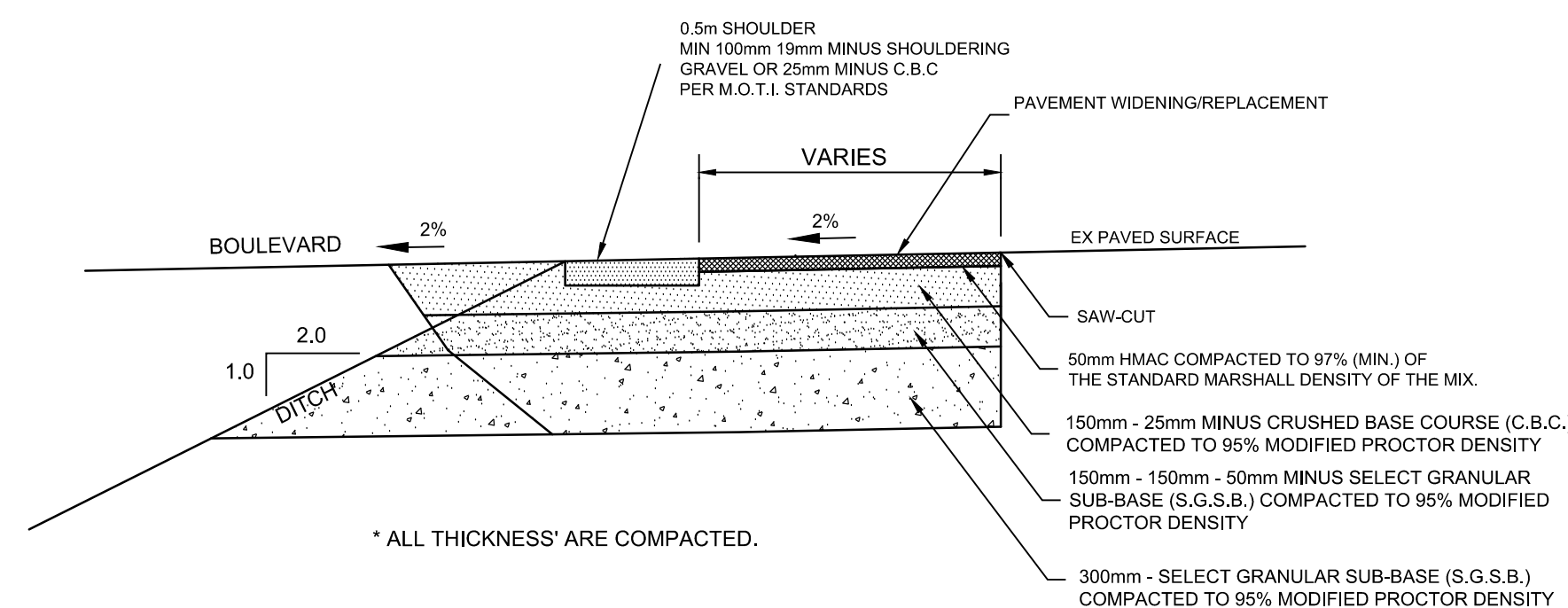
INSIDE PIPE DIA.	INSIDE MANHOLE DIA.
450mm AND LESS	1050mm
525 - 600	1200mm
675 - 750	1350mm
900 AND OVER	RISER MANHOLE



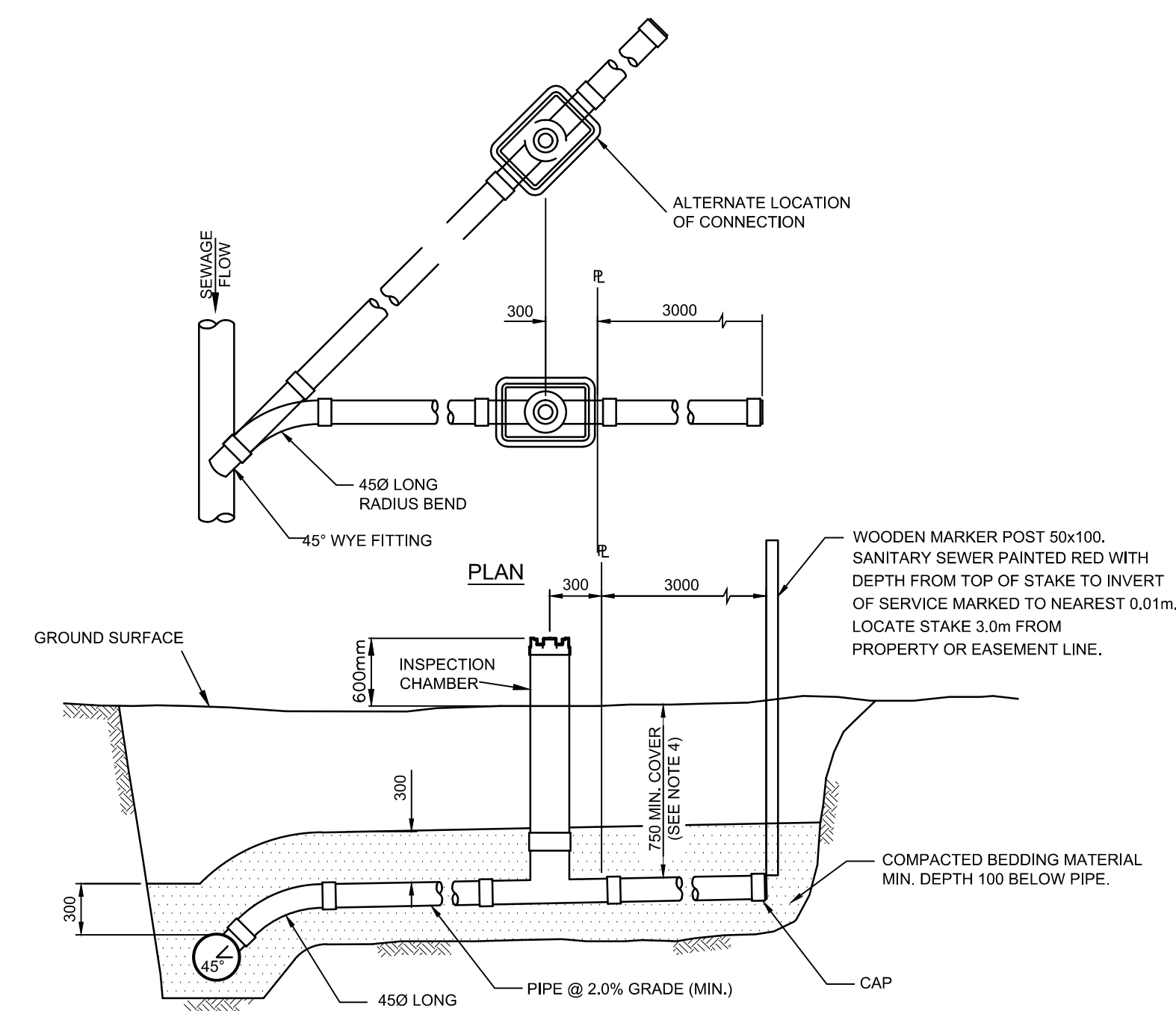
**STANDARD PRE-CAST MANHOLE**  
N.T.S.



**MANHOLE BASE DETAIL**  
N.T.S.



**TYPICAL DETAIL PAVEMENT REINSTATEMENT**  
1:25



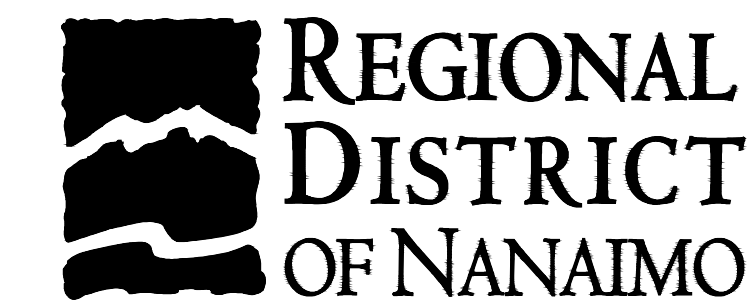
- NOTES**
1. MINIMUM SERVICE CONNECTION DIAMETER TO BE 100mm.
  2. EXTEND TRENCH 1.0m INTO PROPERTY WHEN IN ROCK.
  3. SANITARY SEWER INSPECTION ASSEMBLY TO BE LE-RON "Add-a-Flag". LIDS MUST BE LEFT UN-GLUED FOR FINAL ADJUSTMENT BY RDN FORCES.
  4. SAN. SEWER BOXES TO BE PLASTIC WITH "SEWER" ON THE LID AND ARE TO BE DELIVERED TO THE RDN YARD IN PARKSVILLE FOR INSTALLATION BY RDN FORCES.
  5. MINIMUM 0.75m COVER @ PROPERTY LINE. PROVIDE SUFFICIENT DEPTH TO SERVICE THE BASEMENT PLUMBING BY GRAVITY IN ACCORDANCE WITH THE B.C. PLUMBING CODE.

**TYPICAL SANITARY SERVICE CONNECTION**  
N.T.S.

LEGEND	
EXISTING	PROPOSED
— MC or NMC	EDGE OF PAVEMENT
—	CURBS
—	EDGE OF GRAVEL
—	WATER MAIN
—	STORM SEWER
—	SANITARY SEWER
—	CENTRELINE
—	PROPERTY LINE
—	FENCE LINE
—	DITCH

EXISTING	PROPOSED	EXISTING	PROPOSED
CB	CB	VALVE	VALVE
LB	LB	▲	SERVICE LOCATION
PP	PP		
TP	TP		
B	B		
FH	FH		
CD	CD		
S1	S1		
S2	S2		
A	A		



All work done in connection with these specifications and drawings must comply with the Industrial Health and Safety Regulations of the Workers' Compensation Board.

NOTE: LOCATION OF EXISTING SERVICES ARE SHOWN APPROXIMATELY AND MUST BE CHECKED IN THE FIELD BY THE CONTRACTOR PRIOR TO COMMENCEMENT OF WORK. THE ENGINEER IS TO BE NOTIFIED IMMEDIATELY OF ANY CONFLICTS.

**STANDARD ABBREVIATIONS**

AC	ASBESTOS CEMENT	H	HUB
DI	DUCTILE IRON	F	FLANGE
ST	STEEL	IPT	IRON PIPE THREAD
PVC	POLYVINYL CHLORIDE	CSP	CORRUGATED STEEL PIPE
PE	POLYETHYLENE		

LEGAL DESCRIPTION:

BENCHMARK: TBM - OIP CORNER LOT 10/11, PLAN 24289, HAWTHORNE RISE, EL. 11.479 NOT GEODETIC

REV	DATE	ISSUED FOR TENDER	FOR APPROVAL	REVISIONS	BY
B	8/01/14	ISSUED FOR TENDER			CH
A	12/12/13	FOR APPROVAL			RA

SEAL: THIS PLAN AND DESIGN ARE AND AT ALL TIMES REMAIN THE EXCLUSIVE PROPERTY OF TIMBERLAKE-JONES ENGINEERING LTD. AND CANNOT BE USED OR REPRODUCED WITHOUT WRITTEN CONSENT. THIS PLAN IS PREPARED FOR THE SOLE USE OF OUR CLIENT AND NO REPRESENTATION OF ANY KIND IS MADE TO OTHER PARTIES WITH WHICH TIMBERLAKE-JONES ENGINEERING LTD. HAS NOT ENTERED INTO CONTRACT. WRITTEN DIMENSIONS SHALL HAVE PRECEDENCE OVER SCALED DIMENSIONS. CONTRACTORS SHALL VERIFY AND BE RESPONSIBLE FOR ALL DIMENSIONS AND CONDITIONS ON THE JOB AND THIS OFFICE SHALL BE INFORMED OF ANY VARIATIONS FROM THE DIMENSIONS AND CONDITIONS SHOWN ON THIS DRAWING.

DESIGN:	MTJ	SCALE:	1:500
DRAWN:	RA	DATE:	December 2, 2013
CHECKED:	MTJ	DATE PLOTTED:	09/01/2014
APPROVED:	MTJ	FILENAME:	0276-BASE.DWG

Prepared by:

Weldon Professional Centre Suite 201 - 177 Weld Street PO Box 89 Parksville, BC, V8P 2G3  
 Phone: 250-248-2001 Fax: 250-248-2553 Email: info@tjeng.ca URL: www.tjeng.ca

Client Name: **REGIONAL DISTRICT OF NANAIMO**

Project Name: **HAWTHORNE RISE SANITARY SEWER EXTENSION**

Drawing Title: **TYPICAL SANITARY SEWER DETAILS**

Project Number:	Drawing Number:	Revision:
5500-20-HR-18-7570	0276-01-03	B