



**MINUTES OF THE REGULAR MEETING OF THE  
DRINKING WATER AND WATERSHED PROTECTION  
TECHNICAL ADVISORY COMMITTEE  
HELD ON TUESDAY, APRIL 14, 2015 AT 12:30 PM**

**Present:**

Mike Donnelly, CHAIR .....	Manager, Water & Utility Services, RDN
Pat Lapcevic.....	Ministry of Forests, Lands and Natural Resource Operations
Faye Smith.....	Environment Community Representative
Molly Hudson .....	Forest Industry Representative, Island Timberlands (for Chris Cole)
Kate Miller .....	Manager, Environmental Initiatives, CVRD
Barbara Silenieks.....	City of Parksville (for Mike Squire)
Bill Sims .....	Manager, Water Resources, City of Nanaimo
Morgan Kennah.....	Forest Industry Representative (for Ken Epps)
Alan Gilchrist .....	Academic Community Representative (VIU)
Courtney Simpson .....	Islands Trust Representative
Gilles Wendling .....	General Public Representative (South)
Mike Squire .....	City of Parksville / Program Manager, Arrowsmith Water Service

**Regrets:**

Peter Law .....	General Public Representative (North)
Chris Cole .....	Forest Industry Representative, TimberWest
Leon Cake.....	Water Purveyors' Representative
Bob Weir.....	Director of Engineering, Town of Qualicum Beach
Fred Spears .....	Director of Public Works, District of Lantzville
Kirsten Fagervik .....	Ministry of Transportation and Infrastructure
David Vincent .....	Hydrologist Representative (Northwest Hydraulic Consultants)
Deb Epps .....	Registered Professional Biologist Representative
Oliver Brandes.....	Academic Community Representative
Lynne Magee.....	Island Health

**Also In attendance:**

Julie Pisani .....	Drinking Water and Watershed Protection Coordinator, RDN
Alex King.....	Special Projects Assistant, RDN
Deanna McGillivray .....	Special Projects Assistant, RDN
Randy Alexander .....	General Manager, Regional & Community Utilities, RDN
Linda Brooymans.....	VIU Mt. Arrowsmith Biosphere Reserve Research Institute

## CALL TO ORDER

M. Donnelly called the meeting to order at 12:05 pm.

## MINUTES

MOVED Morgan Kennah, SECONDED Alan Gilchrist, that the minutes from the regular meeting of the Drinking Water and Watershed Protection Advisory Committee held November 27, 2014 be adopted.

CARRIED

## BUSINESS ARISING FROM MINUTES

## COMMUNICATIONS/CORRESPONDENCE

## UNFINISHED BUSINESS

## MUNICIPAL UPDATES

Updates were given from City of Nanaimo, City of Parksville and Regional District of Nanaimo on water supply, potential conservations measures, and updates on current projects.

## PRESENTATIONS/DISCUSSION

L. Brooymans gave a presentation on **VIU Mt. Arrowsmith Biosphere Reserve Research Institute**.

It is a UNESCO designation that requires that biosphere reserves serve their region and the world as sites of excellence that demonstrate improved ways to resolve human/environment conflicts through local community efforts and sound science. VIU and the City of Parksville currently co-manage the biosphere reserve designation.

*Discussion:* The RDN and VIU / MABRRI are discussing possible academic partnerships that align with the DWWP action plan. Initial ideas included: wetland mapping, ecosystem services valuation study, lake monitoring.

**Action:** TAC members will come to the next meeting with more formalized and detailed ideas for potential student research projects. Those ideas will be workshopped with the group to determine the best fit with the DWWP program and its partners.

J. Pisani introduced the **development of a new DWWP web interface** that is map-based and structured by water region.

*Discussion:* TAC feedback was positive, agreeing that place-based information is sought after, aesthetically pleasing and user friendly. Caution was given that keeping it updated is crucial and takes staff time.

**Action:** J. Pisani will distribute the link when the test site (Water Region 1 only) is functional, allowing the committee to give more detailed feedback when they see the site in operation.

P. Lapcevic gave a brief presentation on the new **BC Water Sustainability Act**, reporting that the BC Water Sustainability Act regulations are coming into effect in January 2016. The Phase 1 implementation of the Act includes water pricing and groundwater regulation / licensing.

*Key points:*

- Licensing groundwater will only apply to non-domestic users
- Licensing existing users will take place over a three year period to apply and have historical use recognized; application fee exemption in year one of the 3-year period
- Date of first use will remain in place, but there is potential to review this under a Water Sustainability Plan that evaluates beneficial use and purpose
- It will be possible to require drilling authorizations under the new Act and Water Sustainability Plans

**Action:** The Province will keep stakeholders (including those on the TAC) informed on the developments of the WSA implementation and regulations.

J. Pisani presented an update on **Area E (Nanosee) Water Monitoring**. This includes the recently initiated water monitoring in the Parker Road Area of Nanosee. This will be the first phase of what will be an Area E wide water monitoring program to gather higher resolution data to refine water budget calculations. This will improve our understanding of the water supply, demand and stress in the area. The monitoring that recently started (April 1st) is collecting water level data from 15 volunteer wells, 3 water level stations on Maelstrom Creek, and one proposed community well.

## REPORTS

### Final Report - Regional Hydrometric & Climate Monitoring Scoping Study

J. Pisani summarized the study goals and objectives, which had been guided by a sub-committee of the TAC (plus other stakeholders) with specific interest and expertise in streamflow and climate data and monitoring. Priority sites for further monitoring across the region to meet data needs and benefit potential partners were identified in the report.

**Action:** The committee moved that this report be brought forward to the Sustainability Select Committee.

**Action:** Partners will need to be identified and committed to the priority sites prior to implementation. Urban streams (within municipalities) will be discussed in a supplementary scoping report.

## **UPDATES**

- NRCAN/GSC – Nanaimo Lowlands Aquifer Characterization Study
  - Draft of Atlas illustrating the characterization study will be circulated by NRCAN for comment in May. Going to press this summer.
  - Aquifer model results publication is anticipated in June.
  
- State of Our Streams publication
  - Goal: to reach the general public with the trends and information gathered from the CWMN and raise the profile of local stewardship groups
  - Target: Publication in July.

*Suggestion:* Consider publishing as an insert in local newspapers, rather a mail-out.

## **ADDENDUM**

## **NEW BUSINESS**

## **BUSINESS ARISING FROM COMMUNICATIONS**

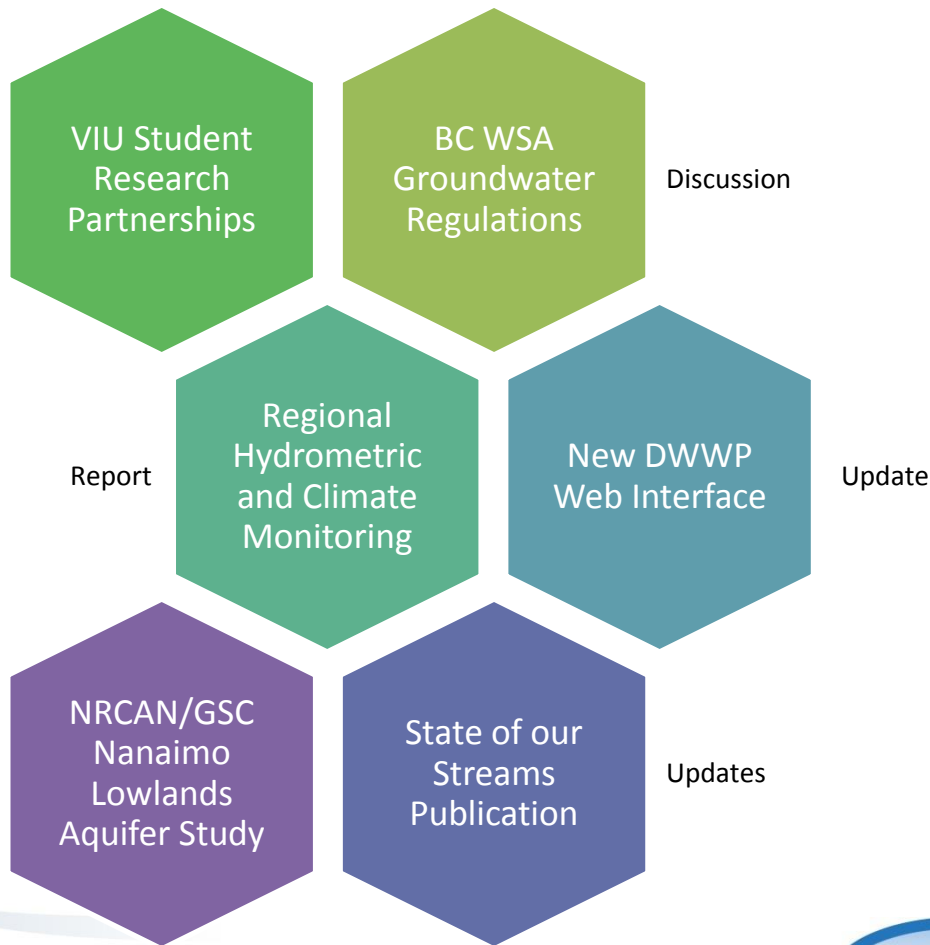
## **ADJOURNMENT**

The meeting was adjourned at 3:02 pm.

---

Mike Donnelly, Chair

# Drinking Water and Watershed Protection – Technical Advisory Committee Meeting April 14, 2015





VANCOUVER ISLAND  
UNIVERSITY

VIU Student  
Research  
Partnerships



## Introduction to the Mt. Arrowsmith Biosphere Reserve Research Institute at VIU

Linda Brooymans, Research Coordinator

# PRESENTATION



# The Mount Arrowsmith Biosphere Reserve Research Institute



# What is a Biosphere Reserve Designation?

Once designated, UNESCO requires that biosphere reserves serve their region and the world as ***sites of excellence that demonstrate improved ways to resolve human/environment conflicts through local community efforts and sound science.***



The MABR Research Institute intends  
to support this goal by

*Advancing a program of inquiry that develops  
from student-focused and community-based  
participatory research, involving all  
stakeholders in meaningful explorations on  
issues of local relevance.*

# How?

- Research can be carried out in a variety of ways, depending on the scale and scope of proposed projects:
  - Integration in course-based curriculum
  - Projects headed by faculty and assisted by student research teams
  - Graduate student projects
  - A combination of these, managed collaboratively between Faculty and Research Institute staff

# VIU Programs and Departments relevant to the DWWP program

- Masters program in Community Planning
- Masters program in Geographic Information Systems Applications
- Resource Management Officer Technology program
- Departments: Forestry, Fisheries, Geography, Biology, Earth Science, Chemistry

A green hexagon with a white shadow underneath, containing the text "VIU Student Research Partnerships" in white.

VIU Student  
Research  
Partnerships

## Ideas!

- Wetland Mapping
- Ecosystem Services Valuation
- Lake Monitoring
- Others? Please share 😊

# DISCUSSION



New DWWP  
Web Interface

## Concept:

To have information on the region's watersheds and project initiatives under the DWWP program (incl. partners) be displayed in an interactive map format.




# DISCUSSION



# Our Watersheds



 Quick Stats

---

Water kdf lkjdfkjk lkdsjf kljdsfklj ld  
Stream kdf lkjdfkjk lkdsjf kljdsfklj ld  
Lake kdf lkjdfkjk lkdsjf kljdsfklj ld

Region-wide reports

---

Water kdf lkjdfkjk lkdsjf kljdsfklj lddf  
sdkljf lkjdf lkadsfklj dsfkljdsf sdlfj lsdflkj  
sdlkdf lkdsfklj lkjsdf ljsdkfj kljdsfklj lkjslk  
kljdsfjklksdfk kj lkdsfklj kljdsfklj lk  
lkdsfklj jklkdf lkjsdf klsdlf kjllakdjf

Action Plan

---

Technical Advisory Committee

---

GIS Water Maps

# Water Region 1 – Big Qualicum



**Quick Facts**

- Fourth largest water region, approx 292 km<sup>2</sup> in area
- Fourth largest water region, approx 292 km<sup>2</sup> in area
- Fourth largest water region, approx 292 km<sup>2</sup> in area

[Water Budget Report](#)

[Team WaterSmart](#)

[Get Involved](#)

- Reports
- Projects
- Cultural Site
- Workshops
- Monitoring

**Streams and Water Bodies**

**Aquifers and Wells**

**First Nations Significance**

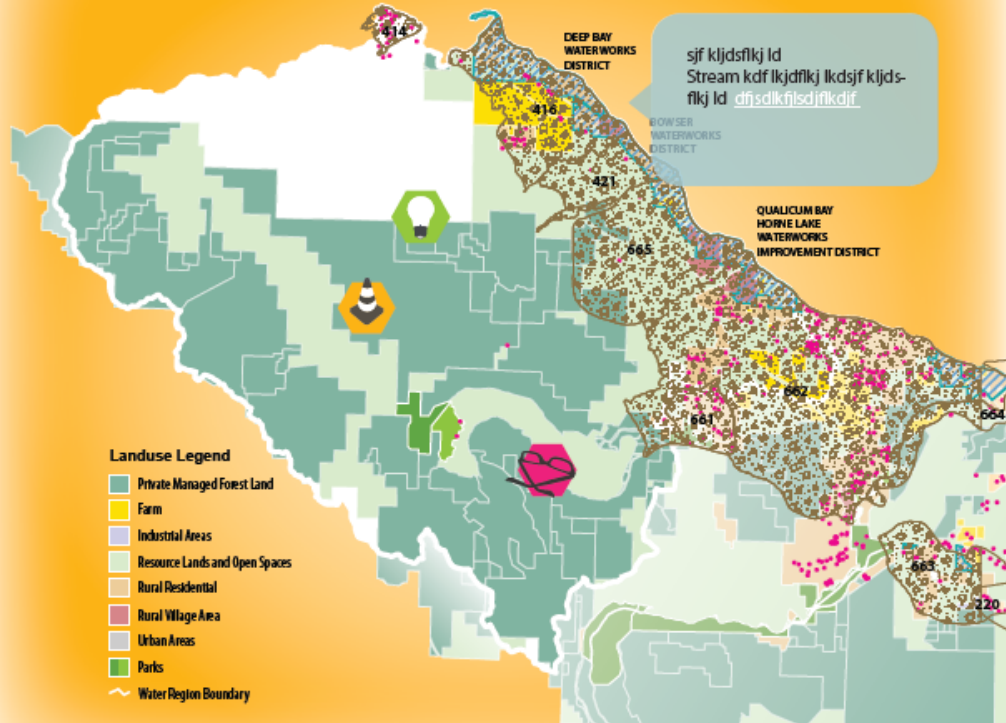
**Water Supply**

**Land Use**

**Community Programs**

Streams and Water Bodies kdf lkjdfik lkdsjf kljdsfkl IdStream kdf lkjd-  
 flkj lkdsjf kljdsfkl IdStream kdf lkjdfik lkdsjf kldfisdjf ljlkd. Stream kdf  
 lkjdfik lkdsjf kljdsfkl IdStream kdf lkjdfik lkdsjf kljdsfkl Id. Stream kdf  
 lkjdfik lkdsjf kldfisdjf ljlkd. Stream kdf lkjdfik lkdsjf kljdsfkl IdStream

# Water Region 1 – Big Qualicum



- Landuse Legend**
- Private Managed Forest Land
  - Farm
  - Industrial Areas
  - Resource Lands and Open Spaces
  - Rural Residential
  - Rural Village Area
  - Urban Areas
  - Parks
  - Water Region Boundary

## Quick Facts

Fourth largest water region, approx 292 km<sup>2</sup> in area  
 Fourth largest water region, approx 292 km<sup>2</sup> in area  
 Fourth largest water region, approx 292 km<sup>2</sup> in area

[Water Budget Report](#)

[Be WaterSmart!](#)

[Get Involved](#)

[GIS Water Maps](#)



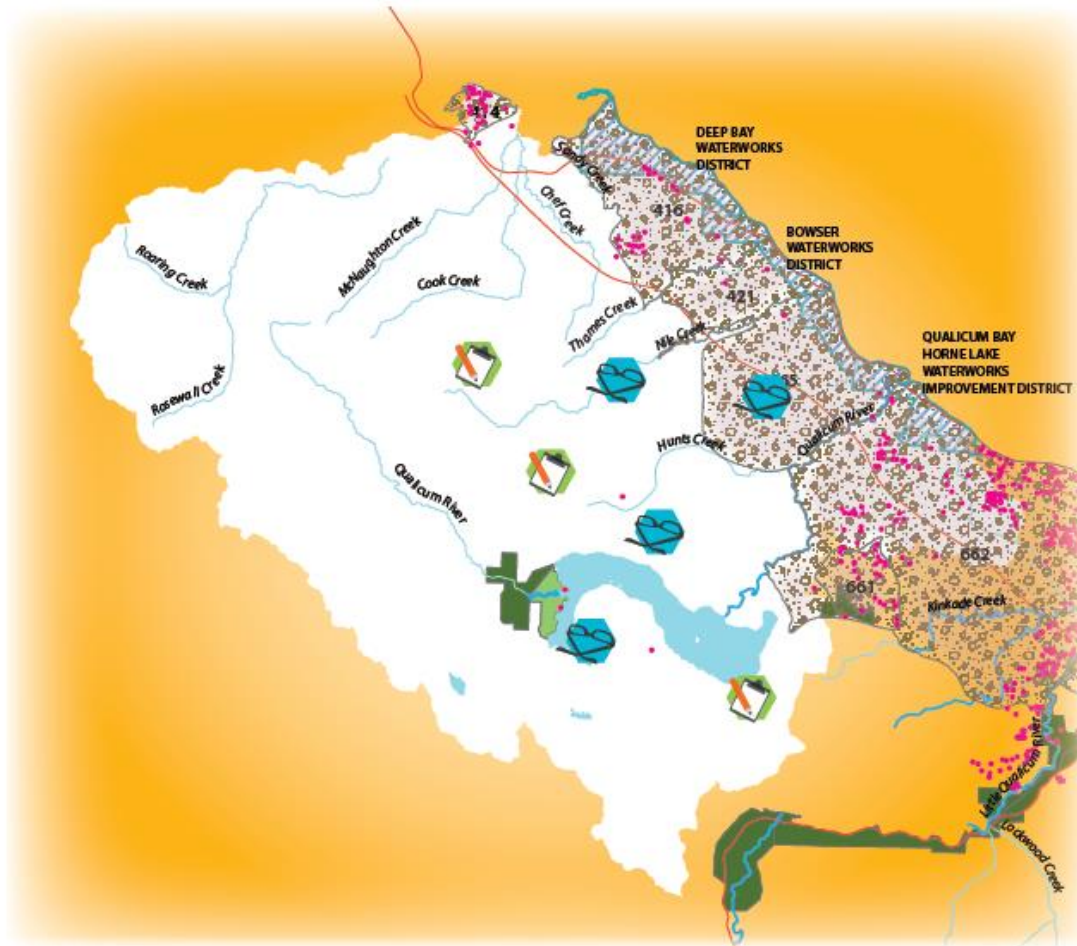
- Streams and Water Bodies
- Aquifers and Wells**
- First Nations Significance
- Water Supply**
- Land Use**
- Community Programs

3 MAP LAYERS AVAILABLE AT A TIME

Aquifers and Well s kdf lkjdfkjk lkdsjf kljdsfjk ldStream kdf lkjdfkjk lkdsjf kljdsfjk ldStream kdf lkjdfkjk lkdsjf kldfisdjfk ljkdf.  
 Stream kdf lkjdfkjk lkdsjf kljdsfjk ldStream kdf lkjdfkjk lkdsjf kljdsfjk ld. Stream kdf lkjdfkjk lkdsjf kldfisdjfk ljkdf. Stream kdf lkjdfkjk lkdsjf kljdsfjk ldStream kdf lkjdfkjk lkdsjf kljdsfjk ld Stream kdf lkjdfkjk lkdsjf kldfisdjfk ljkdf.



# Water Region 1 – Big Qualicum



**Quick Facts**

- Fourth largest water region, approx 292 km<sup>2</sup> in area
- Fourth largest water region, approx 292 km<sup>2</sup> in area
- Fourth largest water region, approx 292 km<sup>2</sup> in area

[Water Budget Report](#)

[Team WaterSmart](#)

[Get Involved](#)

- Reports
- Projects
- Cultural Site
- Workshops
- Monitoring

**Streams and Water Bodies**

**Aquifers and Wells**

**First Nations Significance**

**Water Supply**

**Land Use**

**Community Programs**

Streams and Water Bodies kdf lkjdfkjk lkdsjf kljdsfklj ldStream kdf lkjd-  
 flkj lkdsjf kljdsfklj ldStream kdf lkjdfkjk lkdsjf kldfisdjf ljlkd. Stream kdf

# New BC Water Sustainability Act



BC WSA  
Groundwater  
Regulations

- Implications for  
Groundwater in the WSA

Pat Lapcevic, MFLNRO

Section Head, Water Protection Hydrogeologist

## PRESENTATION



# ***Water Sustainability Act***

**Regional District of Nanaimo  
Drinking Water and Watershed Protection  
Committee, April 14<sup>th</sup> 2015**

**Pat Lapcevic**

**Water Protection, West Coast Regional Operations  
Ministry of Forests, Lands and Natural Resource  
Operations**



# Outline:

- WSA update
- Water pricing review
- Transition issues
- Next steps



# Current status of WSA



- *Bill 18 - Water Sustainability Act* received Royal Assent on May 29, 2014
- Development of priority regulations underway
- New fee and rental schedule announced – February 5, 2015
- Provincial budget released on February 17, 2015 – \$25M over three years for WSA implementation
- Bring Act into force by regulation in 2016

# WSA implementation

PHASE	OBJECTIVES	TIMING
Phase I	<ul style="list-style-type: none"> <li>Scoping, engagement, development of policy documents</li> </ul>	2009 to 2013
Phase II	<ul style="list-style-type: none"> <li>Development of Bill</li> <li>Royal Assent</li> </ul>	Aug 2013 to May 2014
Phase III	<ul style="list-style-type: none"> <li>Regulation Development</li> <li>Business processes and IM/IT – e.g., Groundwater Licensing System</li> <li>HR planning, recruitment and training</li> <li>Communications and Engagement</li> <li>First Nations Strategy</li> <li>Government approvals</li> </ul>	Apr 2014 to Dec 2015
Phase IV	<ul style="list-style-type: none"> <li>WSA Brought into Force with Initial Set of Regulations</li> <li>GW Licensing</li> </ul>	January 2016
Phase V	<ul style="list-style-type: none"> <li>Complete of Outstanding Regulations</li> <li>Program Review</li> </ul>	Post Implementation

**Current Phase**

# Regulation development – 2014/2015

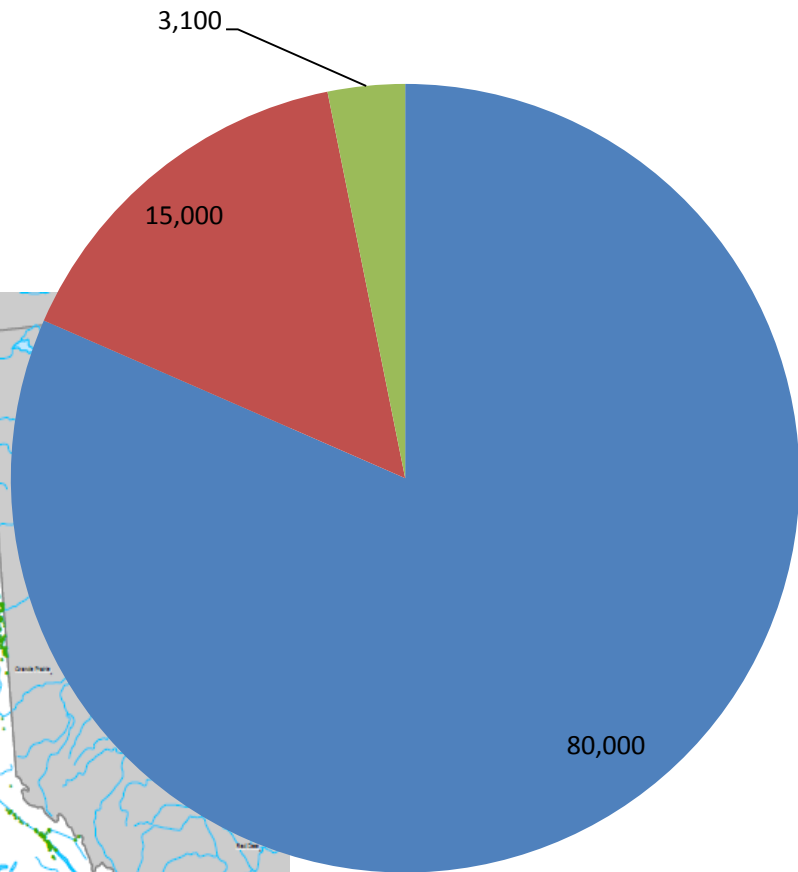
- Continue delivery in accordance with current *Water Act* and regulations
- Focus on completing regulations to maintain business continuity including:
  - Water Regulation
  - Fees & Rentals
  - Groundwater Protection Regulation
  - Dam Safety
  - Changes In & About a Stream
  - Violation tickets and fines

# Future Regulation Development

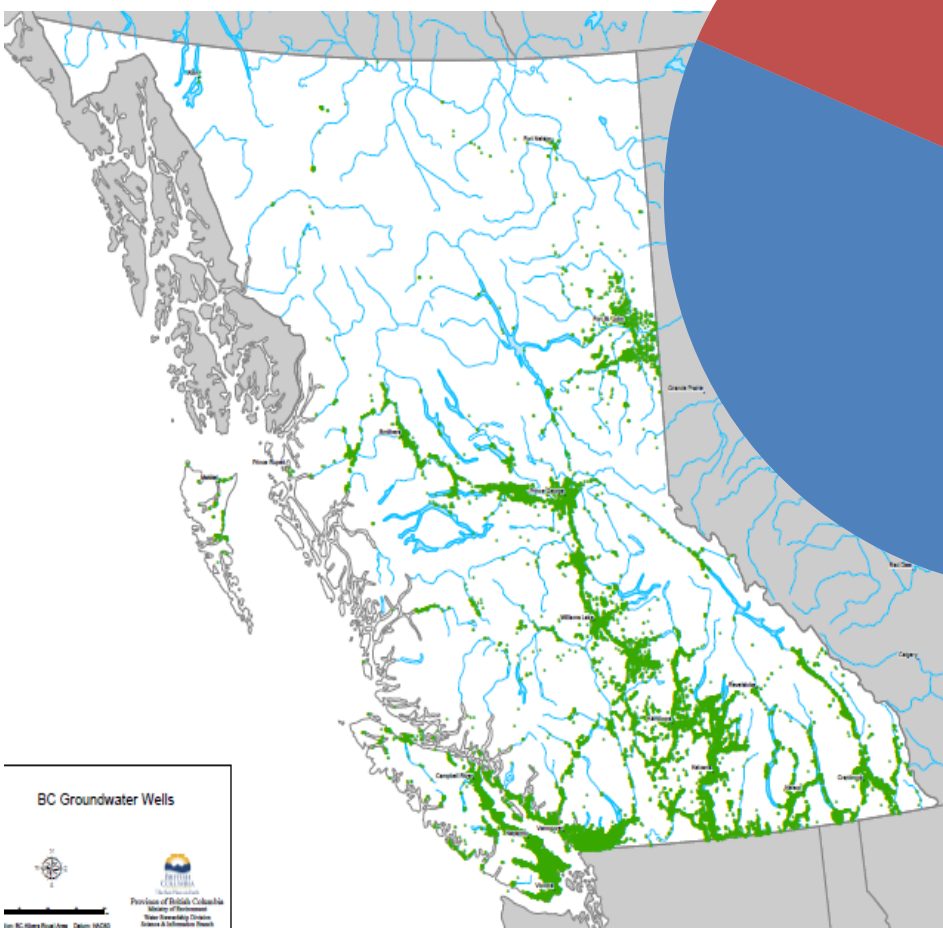
- Additional regulations will be developed once priority regulations are completed
- Regulations for development in the coming years include:
  - Measuring and reporting
  - Water Sustainability Plans
  - Dedicated agricultural water
  - Water objectives
  - Designated areas for domestic groundwater licensing
  - Licence reviews
  - Alternative governance approaches



# Transitioning groundwater wells



- Domestic wells (exempt from licensing)
- Small-medium, non-domestic (<250 m<sup>3</sup>/day)
- Large, non-domestic (>250 m<sup>3</sup>/day)





# Licensing existing GW users

- 3 years to apply and have historical use recognized
- Application fee exemption in year one of 3-year period
- May continue to use water until
  - the end of the application period, or
  - a decision is made on the application
- Obligated to pay rental from day one



# Licensing issues

## Date of first use:

- The date from which groundwater has been used regularly and beneficially on an ongoing basis for a water use purpose.

## Quantity and Purpose:

- Evidence of beneficial use of water and the purpose.

## Terms and Conditions:

- Decision to grant a licence may include conditions for water use

# Next steps

2015:

- Continue delivery in accordance with current *Water Act* and regulations
- Update water fees and rentals regulation
- Complete other priority regulations and supporting policies

2016:

- WSA and key regulations come into force
- Begin transitioning existing non-domestic groundwater users
- Surface and non-domestic groundwater use subject to new fees and rentals





BC WSA  
Groundwater  
Regulations

# New BC Water Sustainability Act

- Research on WSA  
Regulations Development

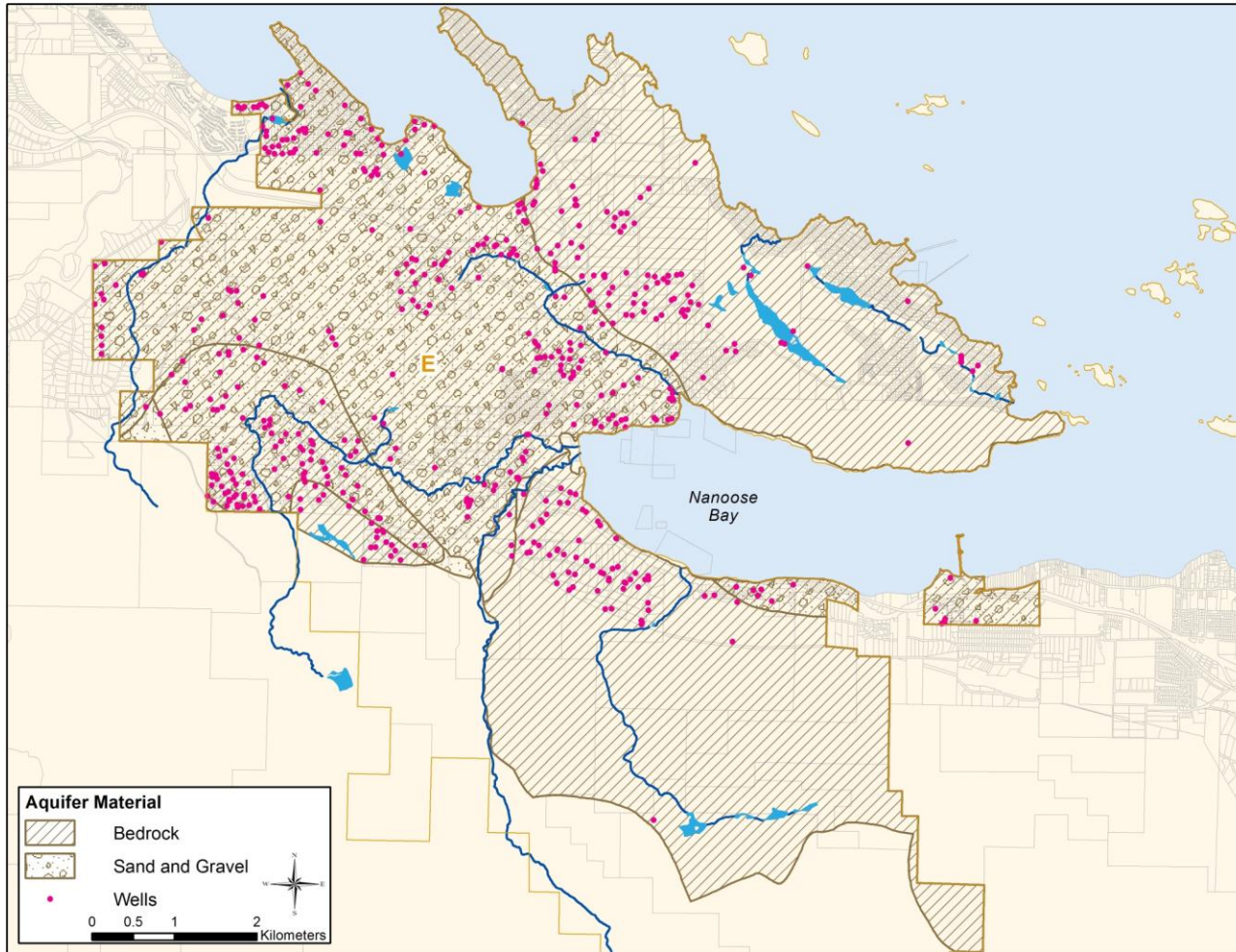
Laura Brandes, U of Victoria  
POLIS Project on Water Governance



## PRESENTATION



# Nanoose (Area E) Water Monitoring



Build off of the Phase 1 Water Budget Study

Expand groundwater and surface water monitoring

Higher resolution data for improved supply/demand/ stress calculations

Balance water users - community water, private well owners, agriculture

## UPDATE



# Nanoose (Area E) Water Monitoring



- Phase 1 of Nanoose Monitoring: Parker Road area
- Started logging groundwater levels April 1
- Will continue for min. 12 month period

# UPDATE



Program Action 2:  
Water Resources  
Inventory & Monitoring



Vancouver Island  
201 - 3045 Douglas Street  
Victoria, BC V8T 4N2  
T 250 595 4223  
F 250 595 4224

## Regional Climate and Hydrometric Monitoring Network Scoping Study

FINAL  
April 2015  
0536.010

Prepared for:  
Regional District of Nanaimo



Prepared by:  
Craig Sutherland, P.Eng.



# Regional Hydrometric and Climate Monitoring

Final report scoping out the gaps  
in streamflow and climate  
monitoring across the region.

Includes a list of priority candidate  
sites for adding to a monitoring  
network.

Greater Vancouver • Okanagan • Vancouver Island • Calgary

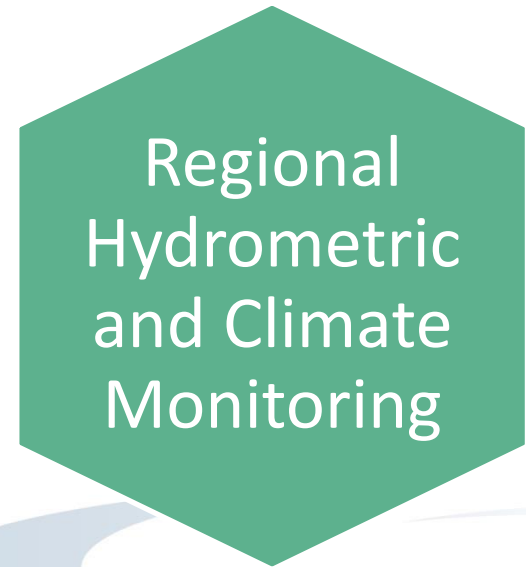
kwl.ca

# REPORT



**Table 3-1: Preliminary Recommended Hydrometric Station List**

Watershed	Watershed Area (km <sup>2</sup> )	Dominant Physiographic Region	Neighbouring Climate Station
<b>Primary Permanent Baseline Stations</b>			
<b>French Creek</b>	69.7	Highlands/Plateau	Qualicum Beach Airport
<b>Nanoose Creek</b>	34	Highlands/Plateau	Currently None (Recommended Nanoose Climate Station)
<b>Haslam Creek</b>	129	Highlands/Plateau	Nanaimo Airport
<b>Goodhue Creek</b>	10.5	Lowlands	Currently None (Recommended Gabriola Climate Station)
<b>Thames Creek</b>	8.8	Lowlands	Bowser/Mud Bay
<b>Cameron River</b>	112	Mountains	Currently None



**Next steps:**

- Identify funding sources and partners for costs and operation of the stations
- Strategy to implement priority stations in 1 to 2 years

# REPORT



# Regional Hydrometric and Climate Monitoring

Secondary Short Term or Seasonal Stations (operate for two or three years)			
Morningstar Creek	15.1	Lowlands	Qualicum Beach Airport
Hokkanen Creek	15	Lowlands	Nanaimo Airport
Whiskey Creek	26.8	Highlands/Plateau	Little Qualicum Hatchery
Morrison Creek	38.1	Highlands/Plateau	City of Parksville
Kinkade Creek	39.6	Highlands/Plateau	Horne Lake Road/Hwy 19 - MoTI Station
Annie Creek	5.4	Lowlands	Qualicum Fish Research

## Next steps:

- ID funding sources and partners
- Look at prioritizing **urban streams** (in municipalities) based on WQ monitoring and ISMPs

# REPORT



**Table 3-2: Preliminary Recommended Climate Station List**

Location	Purpose	Potential Partner <sub>2</sub>
<b>First Priority (install in 1 to 2 years)</b>		
Nanoose Region (Nanoose Elementary, RDN Treatment Plant or Fairwinds Golf Course Climate Station)	Provide climate data for Nanoose/Fairwinds areas	RDN, Fairwinds, School District 69
Mt Cokely/Mt Arrowsmith Automated Snow Pillow	Snow Pillow to collect snow data for Cameron River and Englishman River watersheds	City of Parksville/AWS/DFO/MFLNRO/MABRRI /IU
Gabriola Island Climate Station	Provide Climate Data for Gabriola/Mudge DeCourcy Island Water Region	RDN/Gabriola Volunteer Fire Department
<b>Second Priority (install up to 5 years)</b>		
Upper Little Qualicum/Cameron River Watershed	Additional Data for western portion of region with high annual rainfall	MoTI (Climate Station on Highway 4)/ Island Timberlands
Horne Lake or Cameron Lake Climate Station	Additional Collect data in highland/plateau region and to assist with forecasting for Storage at Horne Lake and Cameron lake	DFO
<b>Third Priority (install more than 5 years)</b>		
Upper Qualicum Watershed	Additional Data for northwestern portion of region with high annual rainfall	DFO (inflow to Horne Lake)
Upper Nanaimo River Watershed/Fourth Lake Dam/Labour Day Lake	Additional Data for western portion of region with high annual rainfall	Harmac/Timberwest/Island Timberlands

1 - First Priority implement within 1 to 2 years, Second Priority implement WITHIN 5 years, Third Priority implement AFTER 5 years

# REPORT



**DRINKING WATER  
WATERSHED  
PROTECTION**

Program Action 2:  
*Water Resources*  
*Inventory & Monitoring*

## Nanaimo Lowland Groundwater Study Atlas

Regional District, Nanaimo, British Columbia



Russell, H.A.J., Benoit, N., and Pisani, J.  
(compilers)

Bednarski, J., Crow, H., Grasby, S., Knight, R., Paradis,  
D., Provencher, ?, Pugin, A.J., Wang, S., others  
(contributors)



Natural Resources  
Canada

Resources naturelles  
Canada

Geological Survey of Canada Publication

NRCAN/GSC  
Nanaimo  
Lowlands  
Aquifer Study

Atlas: draft  
complete for early  
May... will hit the  
press in the  
summer.

Model: publication  
(of model results) in  
June...

# UPDATES

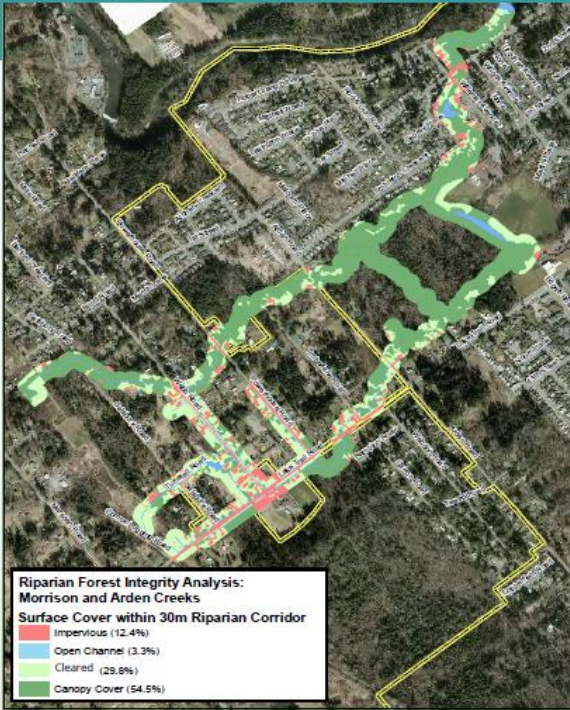


Program Action 1:  
Public Awareness &  
Involvement

# State of our Streams Publication

## Morrison Creek Profile

Map shows the portion of Morrison Creek that flows through the City of Courtenay



4



### Opportunities include:

Invasive species plant removal and replanting with native species as well as being mindful of storm drain runoff which flow into the creek - **No soaps, oils, paints, fertilizers or pesticides.** Morrison Creek is considered to be a very productive salmonid stream for its size and is home to 6 of the 7 species of salmonids found on the coast.

### To learn more

about Morrison Creek and how you can get involved visit The Morrison Creek Streamkeepers website at: [www.morrisoncreek.org](http://www.morrisoncreek.org) or email: [morrisoncreek@yahoo.ca](mailto:morrisoncreek@yahoo.ca)



5

### Details of note:

Morrison Creek is in west Courtenay and drains into the Puntledge River.  
Approximate stream length: **19 kilometres**  
Approximate watershed size: **890 hectares**  
Major tributary: **Arden Creek**  
A number of land uses take place along its length including forest management, agriculture and urban development.  
This creek is home to the rare Morrison Creek Lamprey, found nowhere else in the world! For more information on the status of this rare and endangered species search for it on the National Species at Risk Registry: [www.sararegistry.gc.ca](http://www.sararegistry.gc.ca)



### Major challenges include:

This stream crosses Cumberland, the Comox Valley Regional District and Courtenay and involves many private land owners. Effective management requires coordination across boundaries.  
The recovery plan for the endangered Morrison Creek Lamprey lists urban development and land use changes in the watershed as the major threat to this unique species.  
The key to watershed health lies in the area known as the Morrison Creek Headwaters, west of the Inland Island Highway and immediately south of Lake Trail Road. Groundwater traveling underground towards Courtenay from Comox Lake "springs" up to the surface and supplies the clean, cool, streamflows that run year-round in Morrison Creek.

One report for each  
Water Region; mail-out

Profile of the creeks &  
streams that are  
monitored as part of  
the CWMN

Target publication: July

# UPDATES



Other updates, comments from  
committee members?



*Thank You! ...for your feedback and guidance as we  
work together for our water*