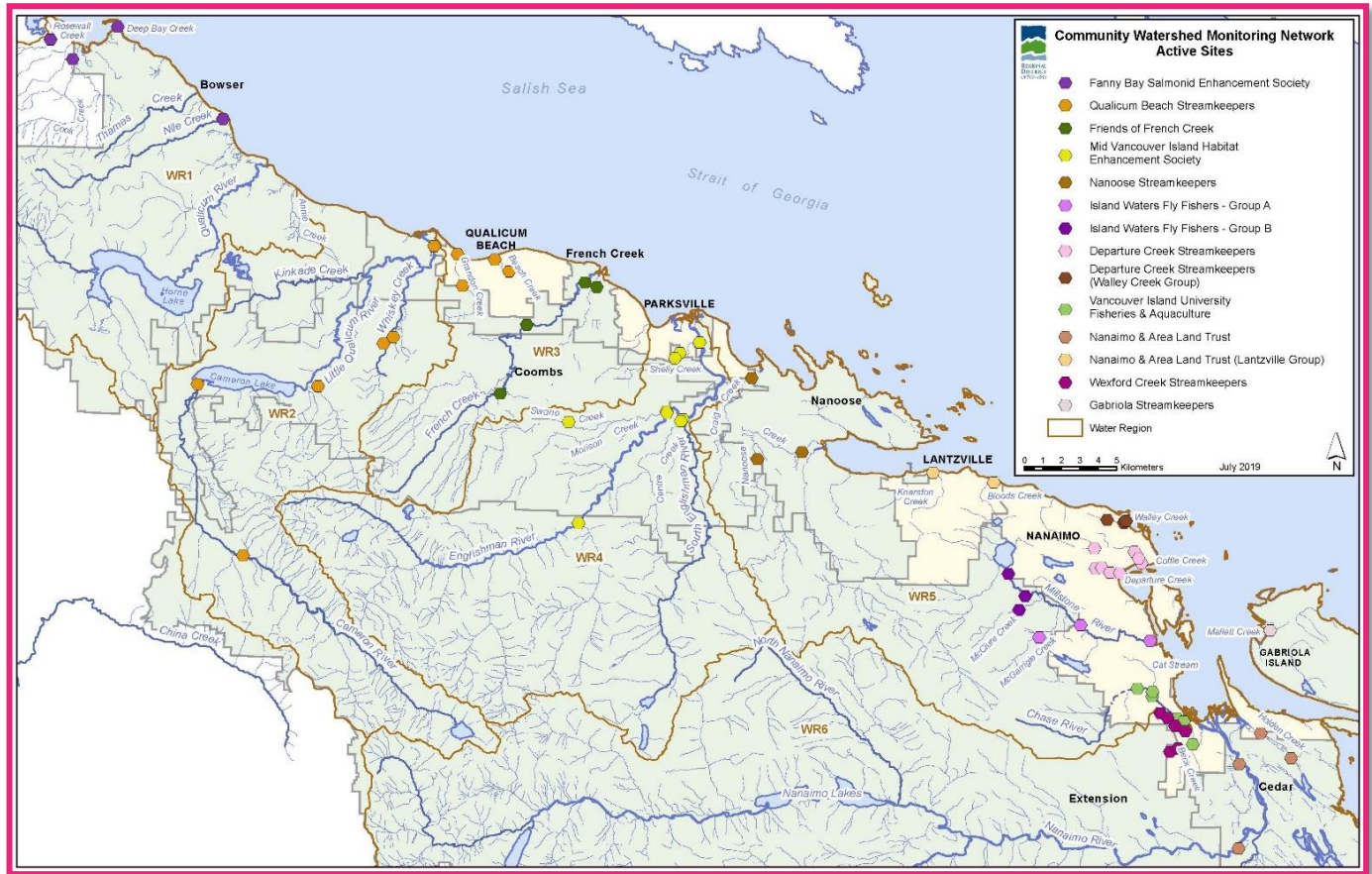


Community Watershed Monitoring Network 2019

Results by Water Region



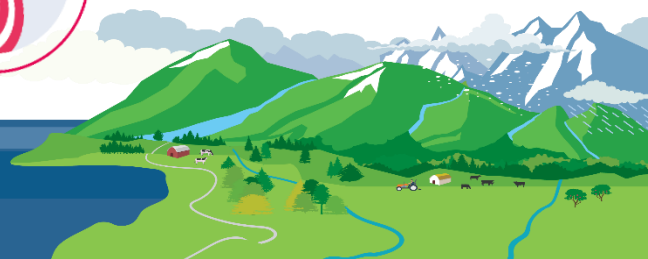
Included in your Water Region package:

1. CWMN sample sites in Water Region (WR) 7
2. How to interpret a box plot
3. Box Plot Comparison 2019 data to previous years:
Graphs displayed per parameter (Temperature, Dissolved Oxygen, Turbidity, Conductivity) per sample period (summer and fall)
4. GSk CWMN map of sample sites



Water Region 7
sampled by:

**Gabriola
Streamkeepers (GSK)**

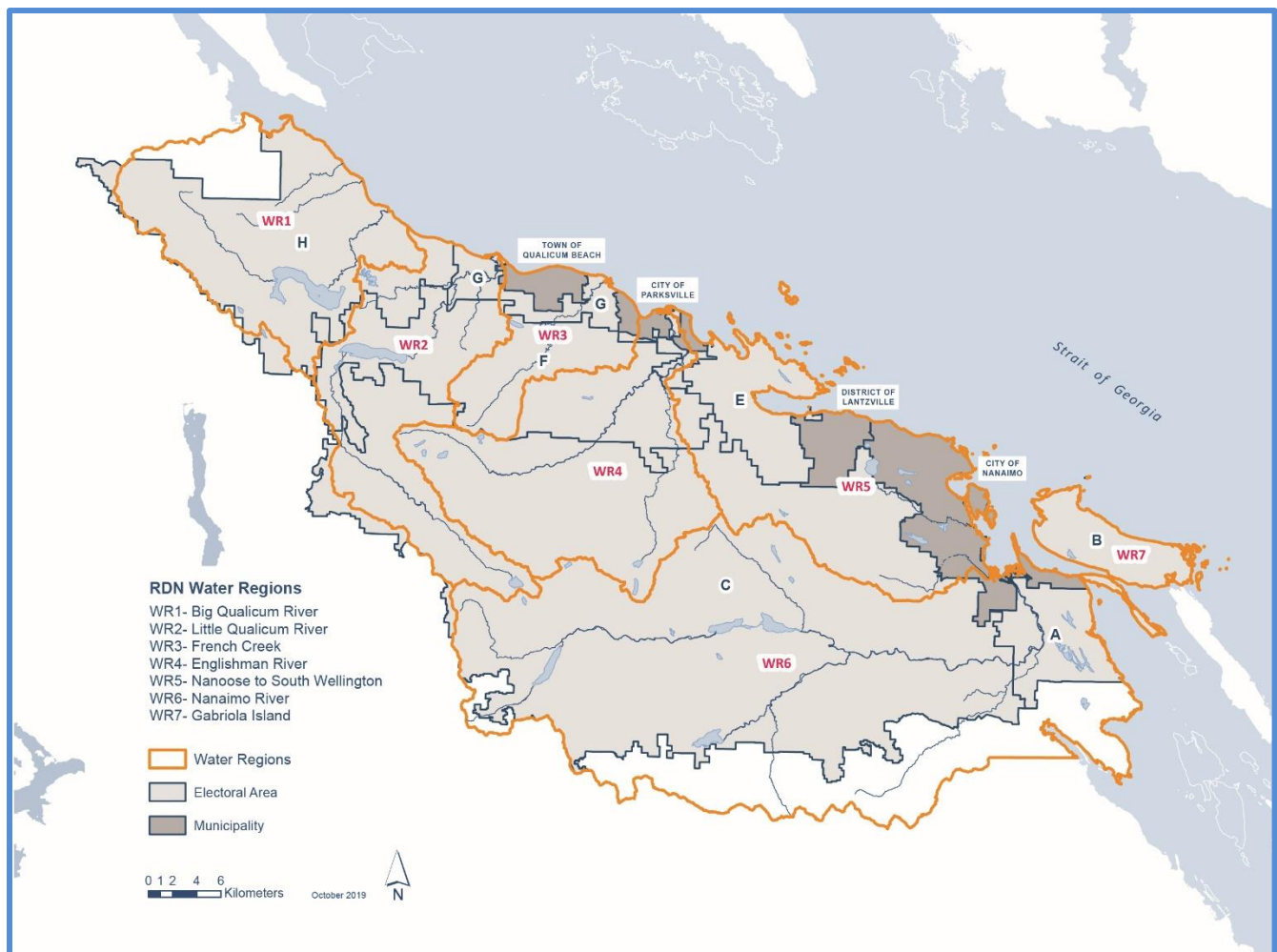


CWMN Sample Sites in WR 7:

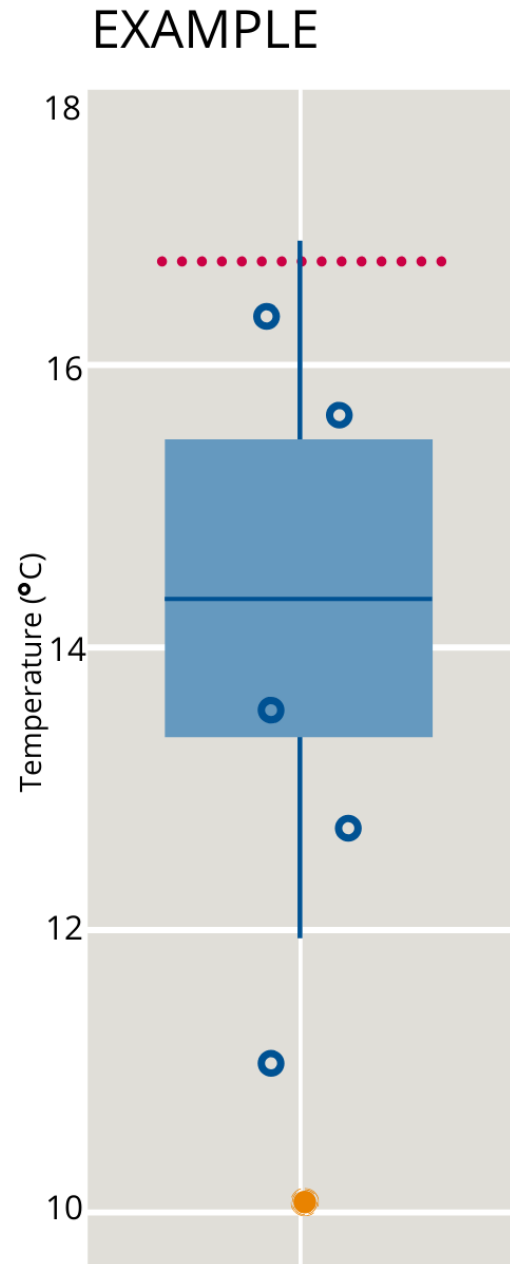
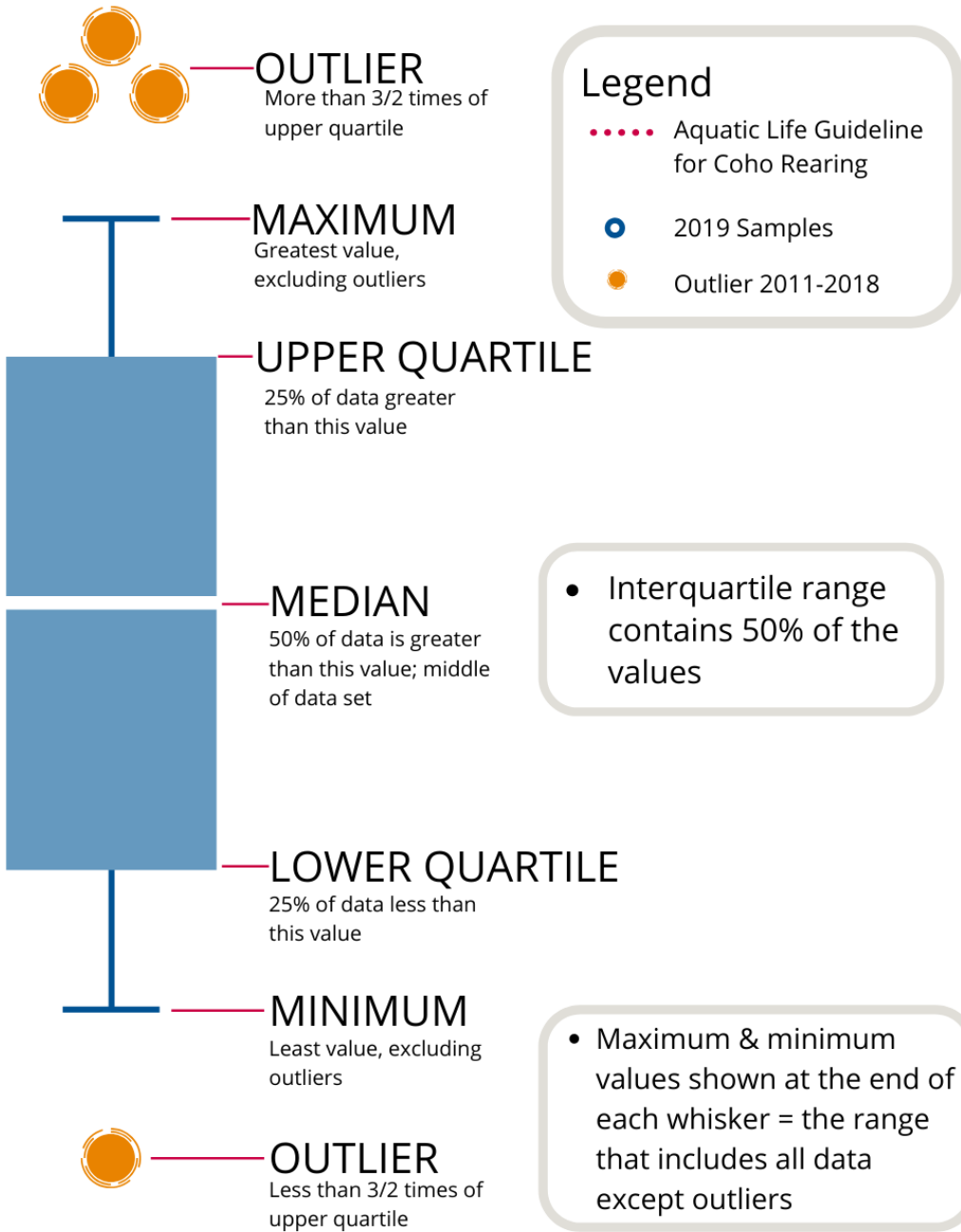
The table below shows the group(s) and sites monitored, as well as the number of years and which years a site was sampled. The number of years is important to keep in mind when interpreting the box plots as the plot for each site may contain a slightly different temporal range.

Group	EMS ID	Geographic Description	Years Sampled*	Years Monitored
GSk	E304070	Mallett Creek 40m upstream from Taylor Bay Rd	5	2015 - present

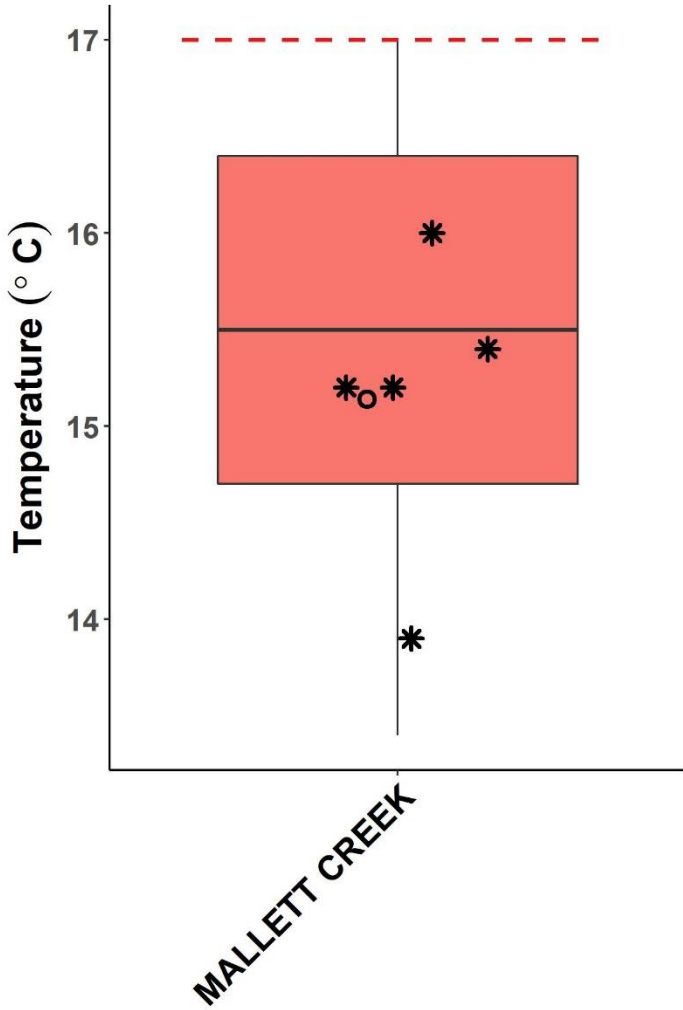
*The number of years sampled up to and including 2019.



How to Interpret a Box Plot:

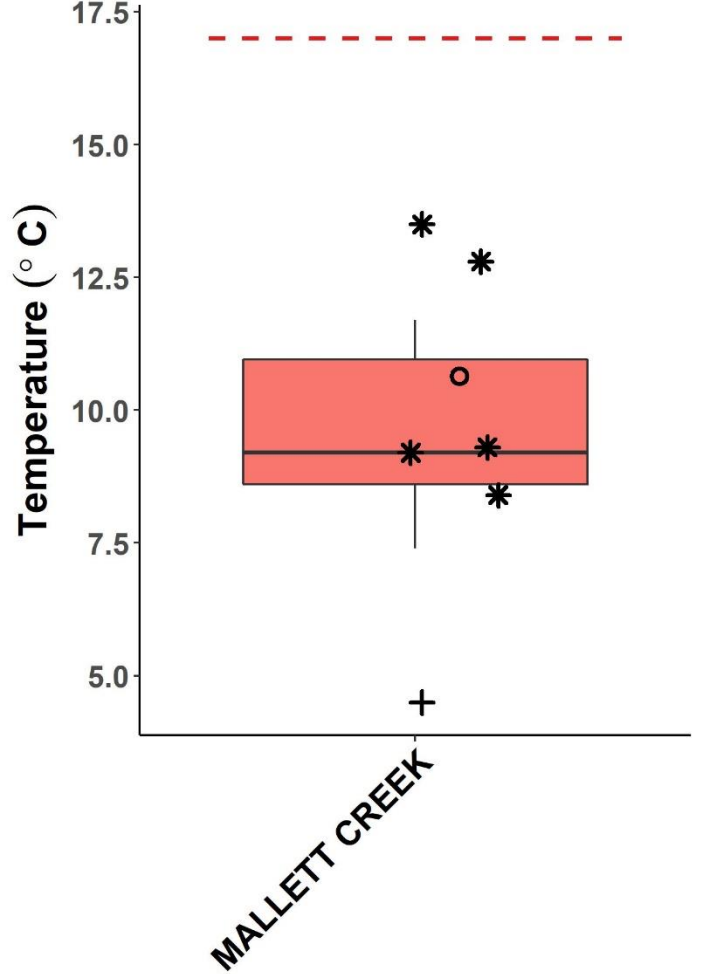


WR7 Summer Temperature

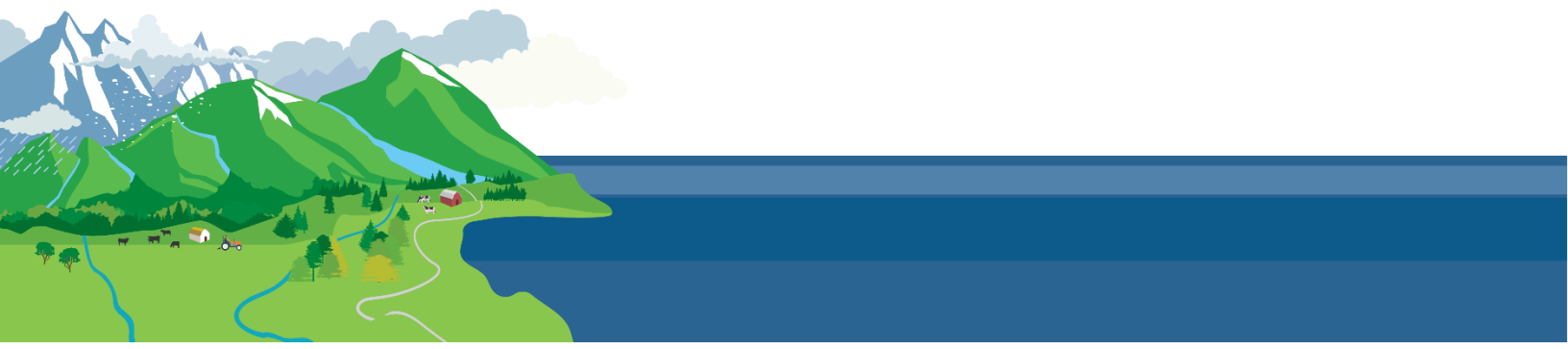


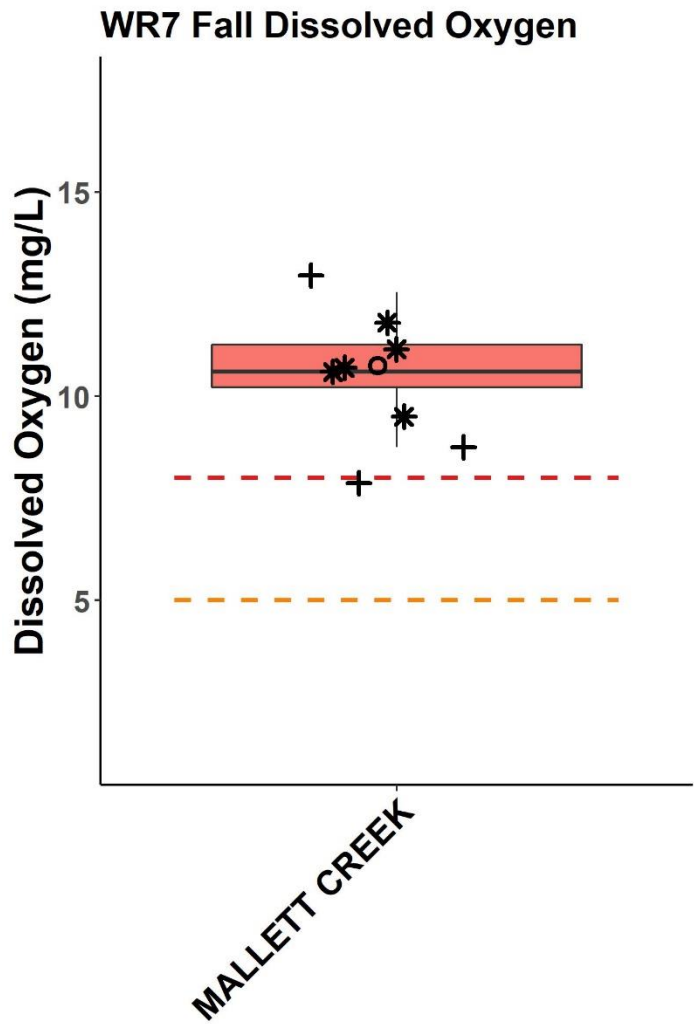
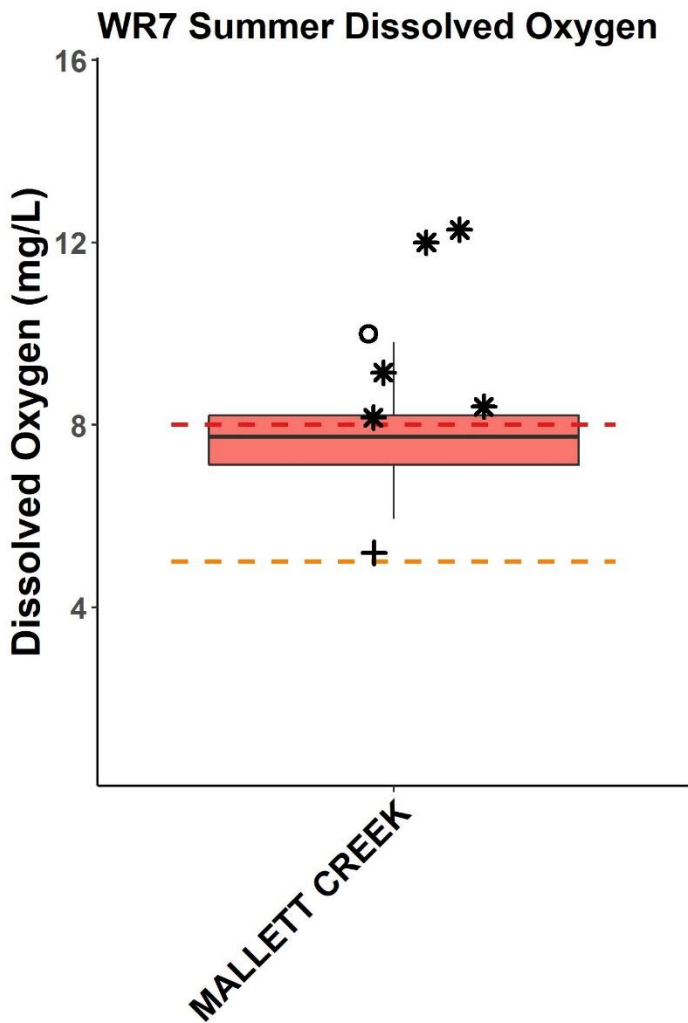
* 2019 Samples
 ○ 2019 30 Day Avg
 --- Aquatic Life Guideline for Coho Rearing

WR7 Fall Temperature



* 2019 Samples
 + Outlier 2011-2018
 ○ 2019 30 Day Avg
 --- Aquatic Life Guideline for Coho Rearing



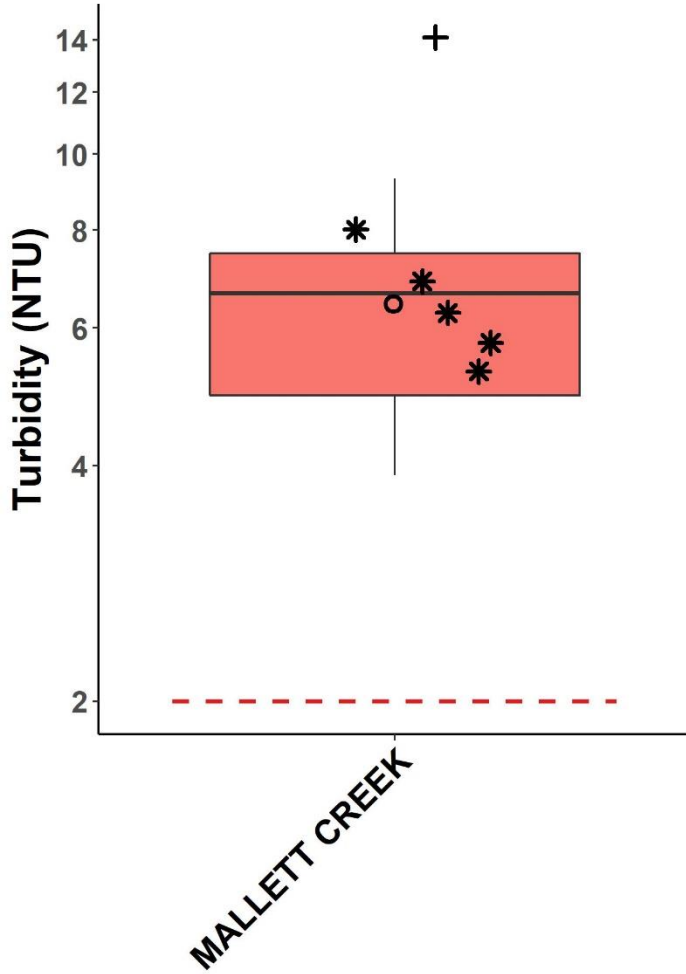


* 2019 Samples
 + Outlier 2011-2018
 O 2019 30 Day Avg
Guideline
 - - 30 Day Average
 - - Instantaneous Minimum

* 2019 Samples
 + Outlier 2011-2018
 O 2019 30 Day Avg
Guideline
 - - 30 Day Average
 - - Instantaneous Minimum

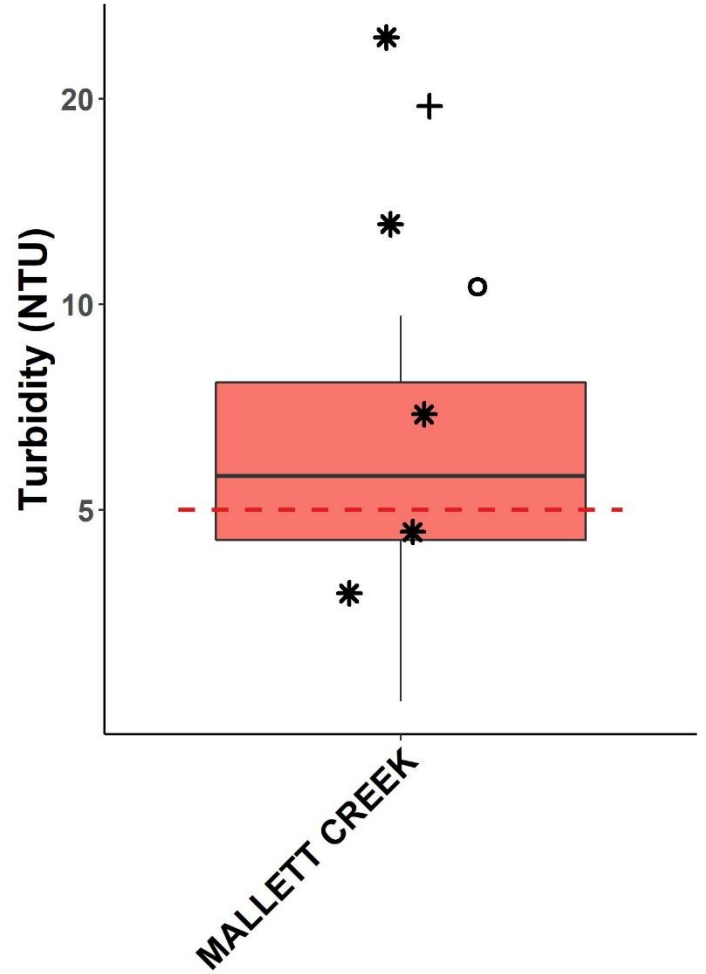


WR7 Summer Turbidity

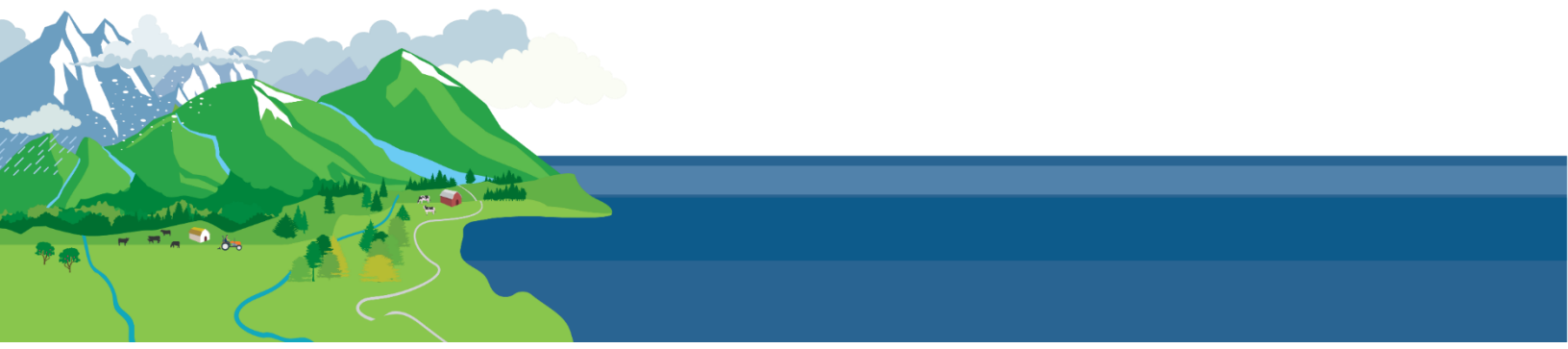


- * 2019 Samples
- + Outlier 2011-2018
- 2019 30 Day Avg
- Guideline
- - Jan-Sept Max

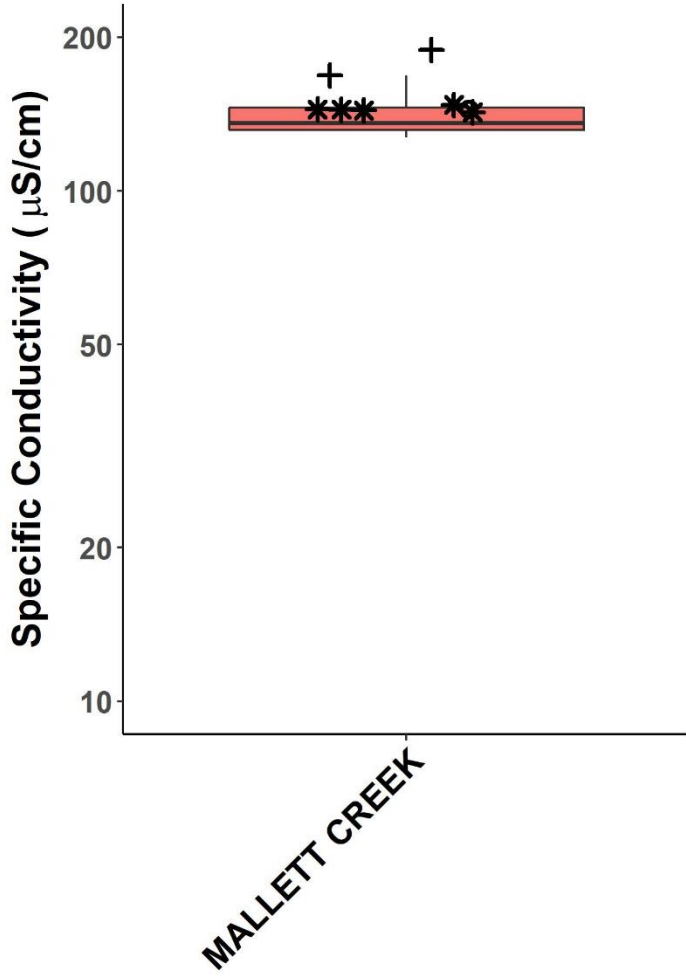
WR7 Fall Turbidity



- * 2019 Samples
- + Outlier 2011-2018
- 2019 30 Day Avg
- Guideline
- - Oct-Dec Max

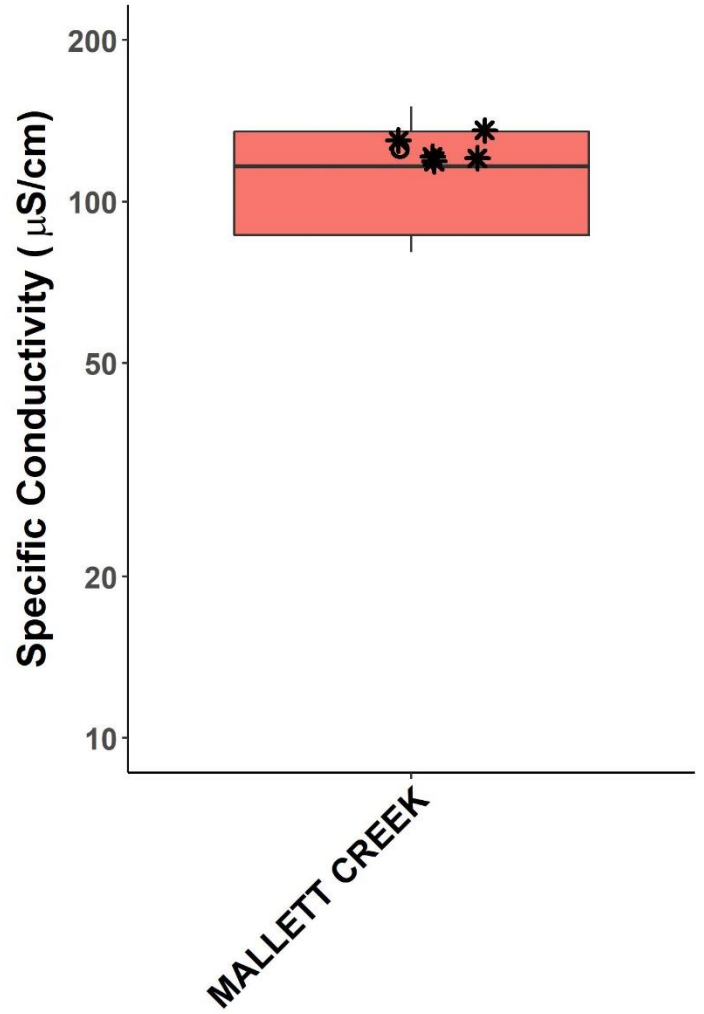


WR7 Summer Conductivity



- * 2019 Samples
- + Outlier 2011-2018
- 2019 30 Day Avg

WR7 Fall Conductivity





- * 2019 Samples
- 2019 30 Day Avg






Gabriola Streamkeepers 2019 Monitoring Sites

Status

-  Active
-  Not Active

-  Community Park
-  Regional Park
-  Provincial Park

 Watercourse
(approximate location)

2018 Air Photo



July 2019

