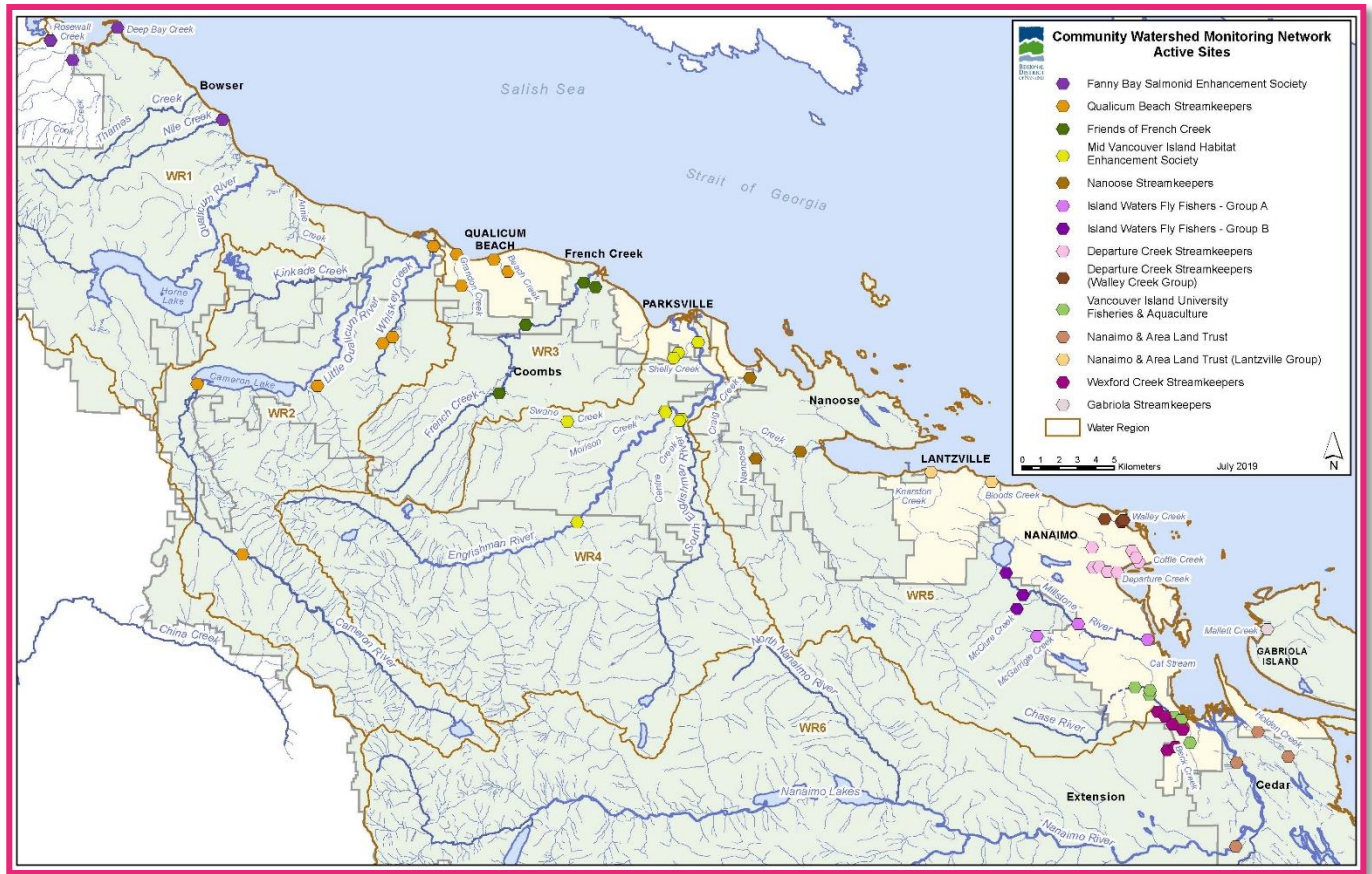


Community Watershed Monitoring Network 2019 Results by Water Region



Included in your Water Region package:

1. CWMN sample sites in Water Region (WR) 6
2. How to interpret a box plot
3. Box Plot Comparison 2019 data to previous years:

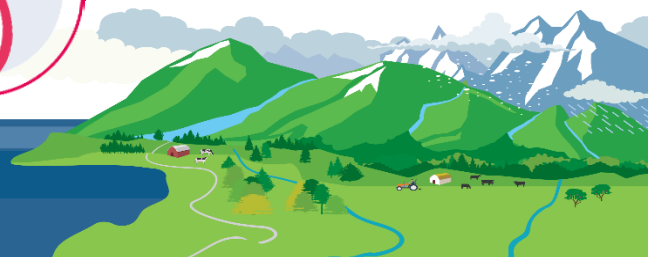
Graphs displayed per parameter (Temperature, Dissolved Oxygen, Turbidity, Conductivity) per sample period (summer and fall)

4. VIU CWMN map of sample sites
5. NALT CWMN map of sample sites
6. WxcS CWMN map of sample sites



Water Region 6
sampled by:

**Vancouver Island University
Coastal Hydrology &
Climate Change Research
Lab (VIU) ,
Nanaimo and Area Land
Trust (NALT), &
Wexford Creek
Streamkeepers (WxcS)**



CWMN Sample Sites in WR 6:

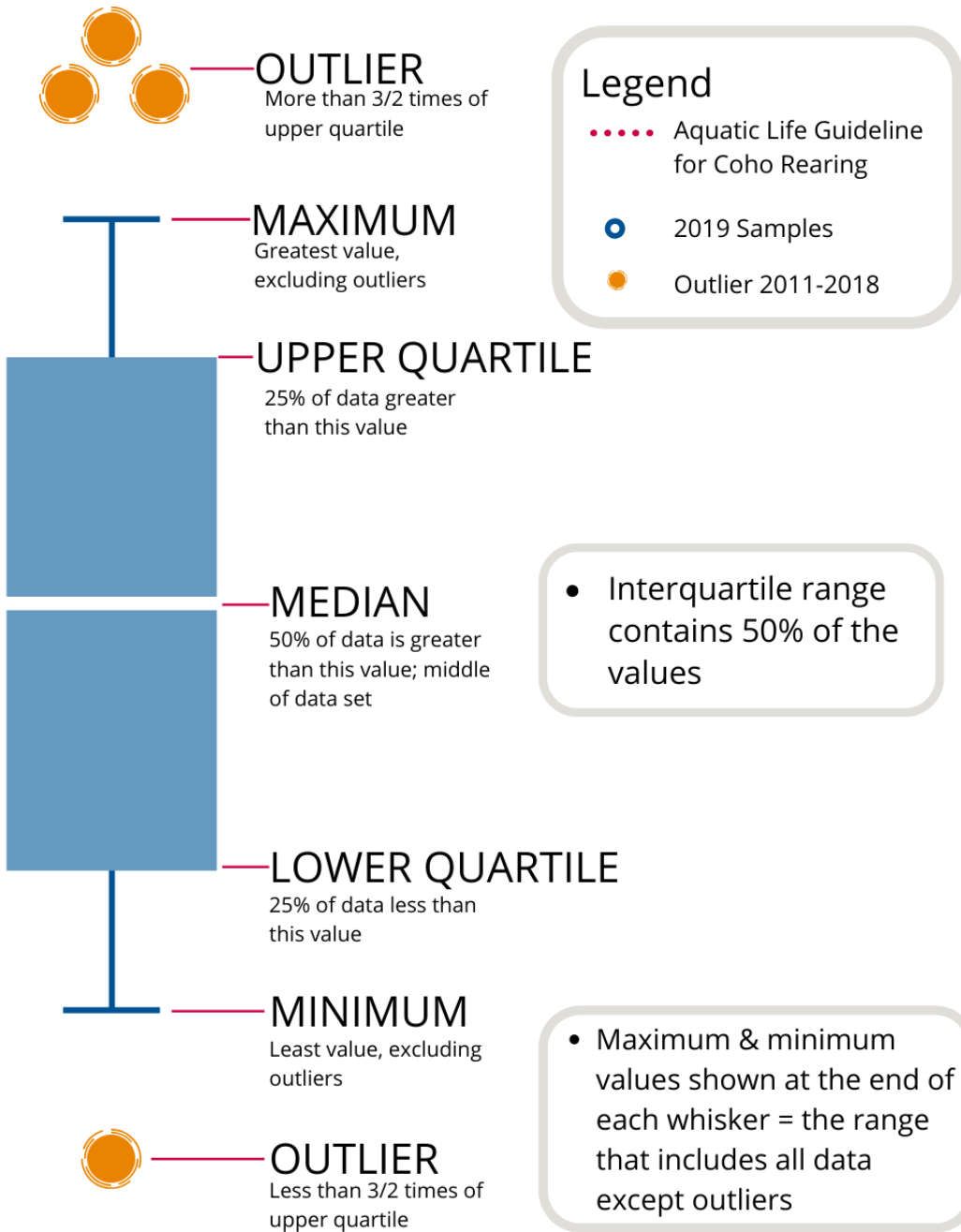
The table below shows the group(s) and sites monitored, as well as the number of years and which years a site was sampled. The number of years is important to keep in mind when interpreting the box plots as the plot for each site may contain a slightly different temporal range.

Group	EMS ID	Geographic Description	Years Sampled*	Years Monitored
VIU	E290487	Beck Creek @ Cedar Rd	8	2012 - present
NALT	E287699	Nanaimo River u/s Haslam Ck ~500m d/s hwy bridge	9	2011 - present
NALT	E215789	Nanaimo River at Cedar Rd bridge	6	2014 - present
NALT	E310147	Holden Creek off East side of Lazo Lane	2.5	fall 2017 - present
WxCS	E318152	North Wexford Ck just d/s Douglas Ave	1	2019 - present
WxCS	E318153	North Wexford Ck just d/s Tenth St	1	2019 - present
WxCS	E318153	North Wexford Ck just u/s seniors complex	1	2019 - present
WxCS	E318153	Wexford Ck ~20m d/s confluence of N and main arm	1	2019 - present
WxCS	E318153	Wexford Ck at Community Park (Glenford PI)	1	2019 - present

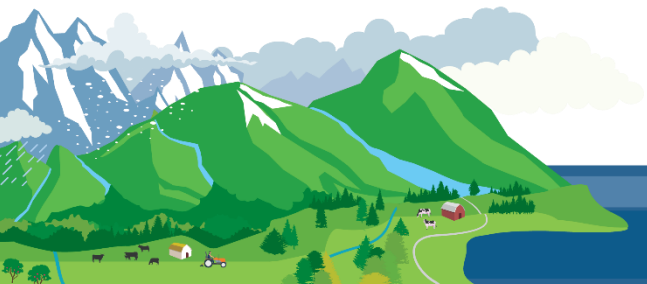
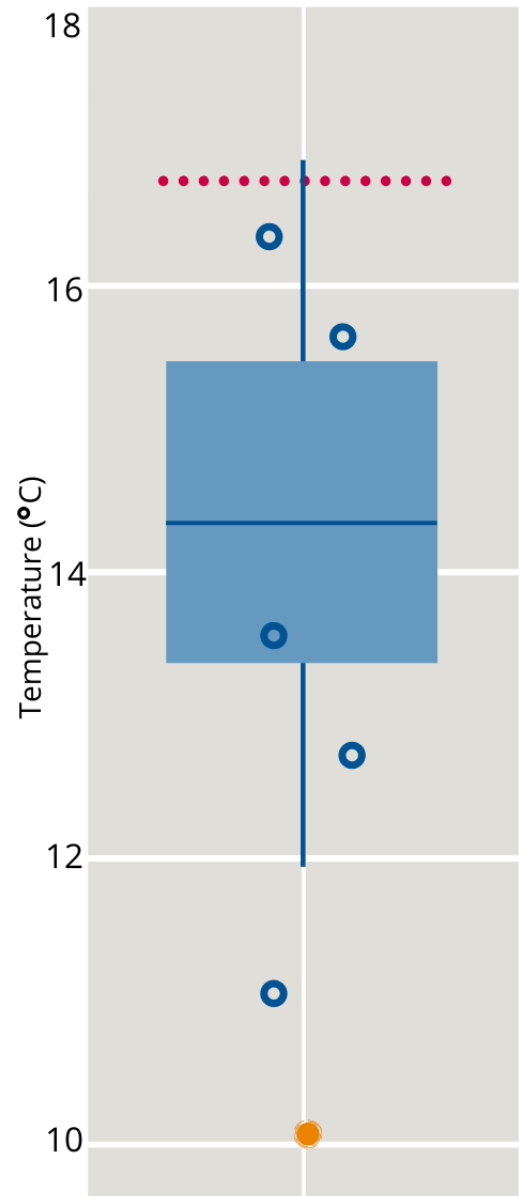
**The number of years sampled up to and including 2019.*



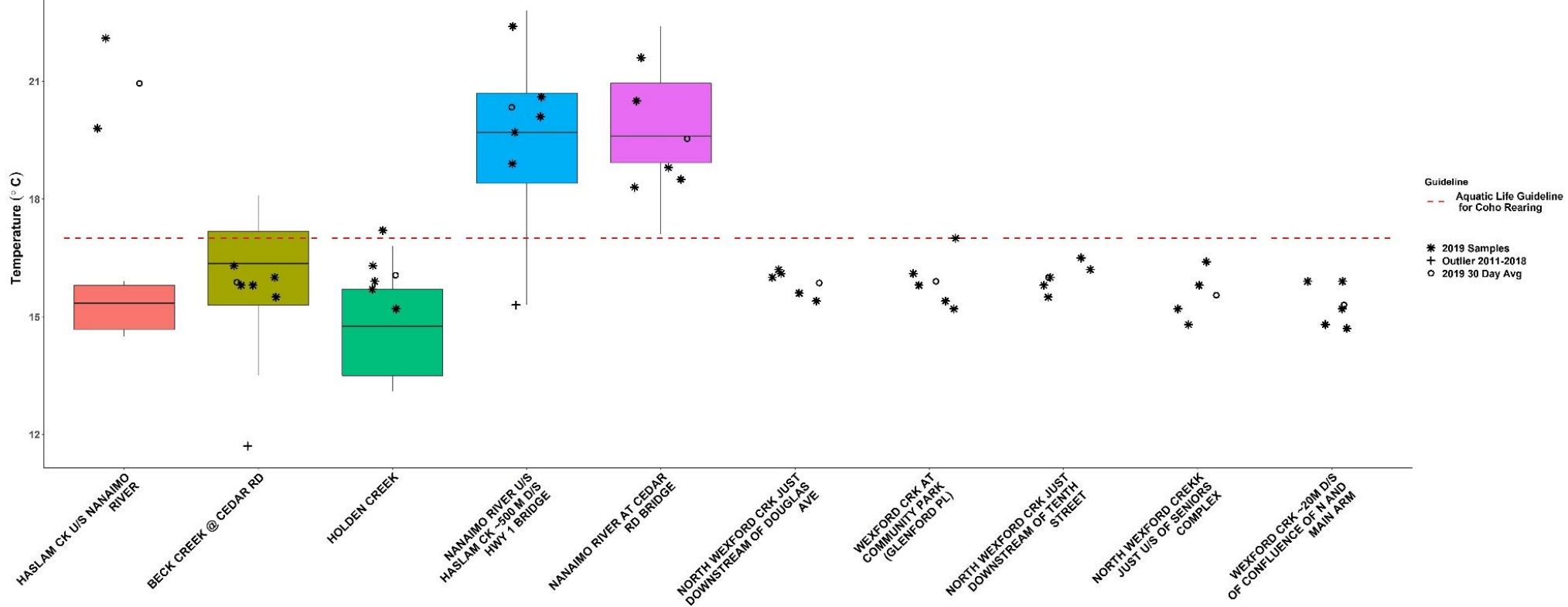
How to Interpret a Box Plot:



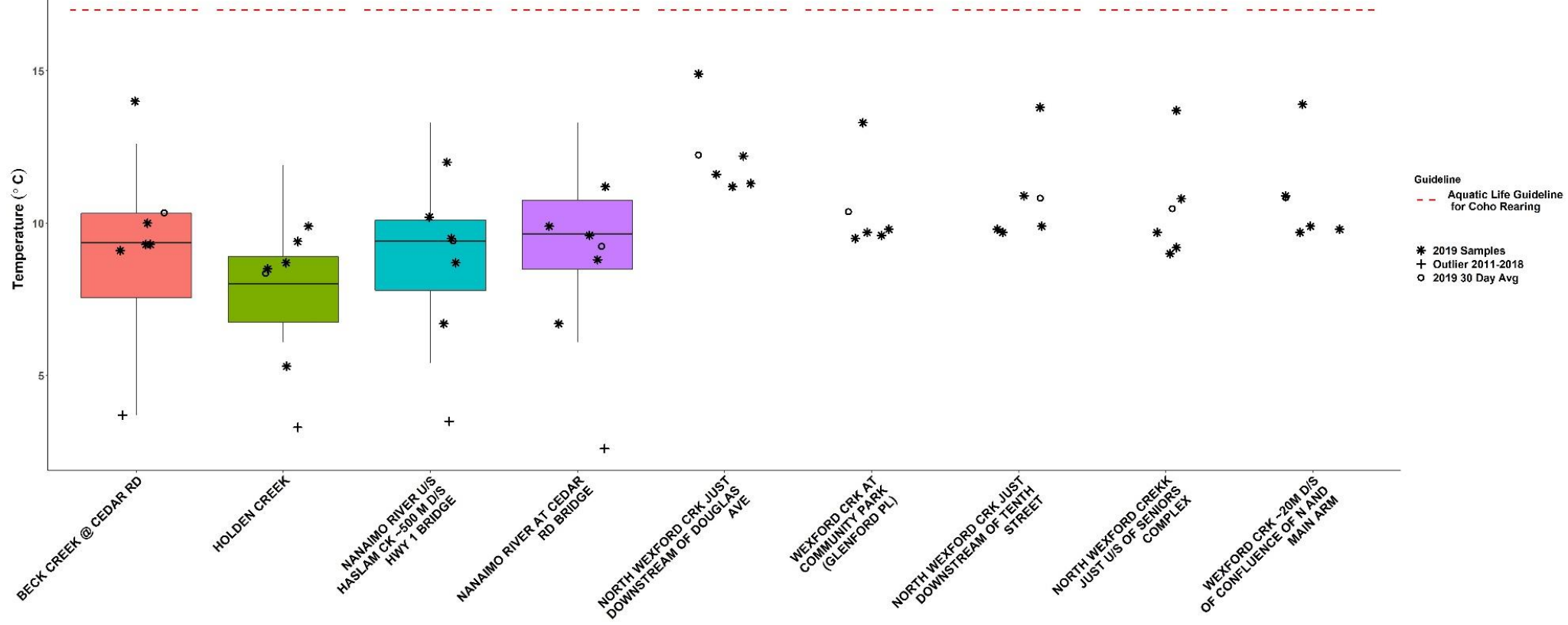
EXAMPLE



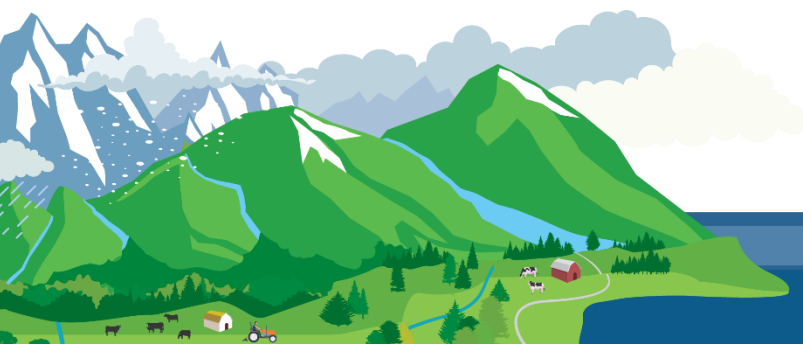
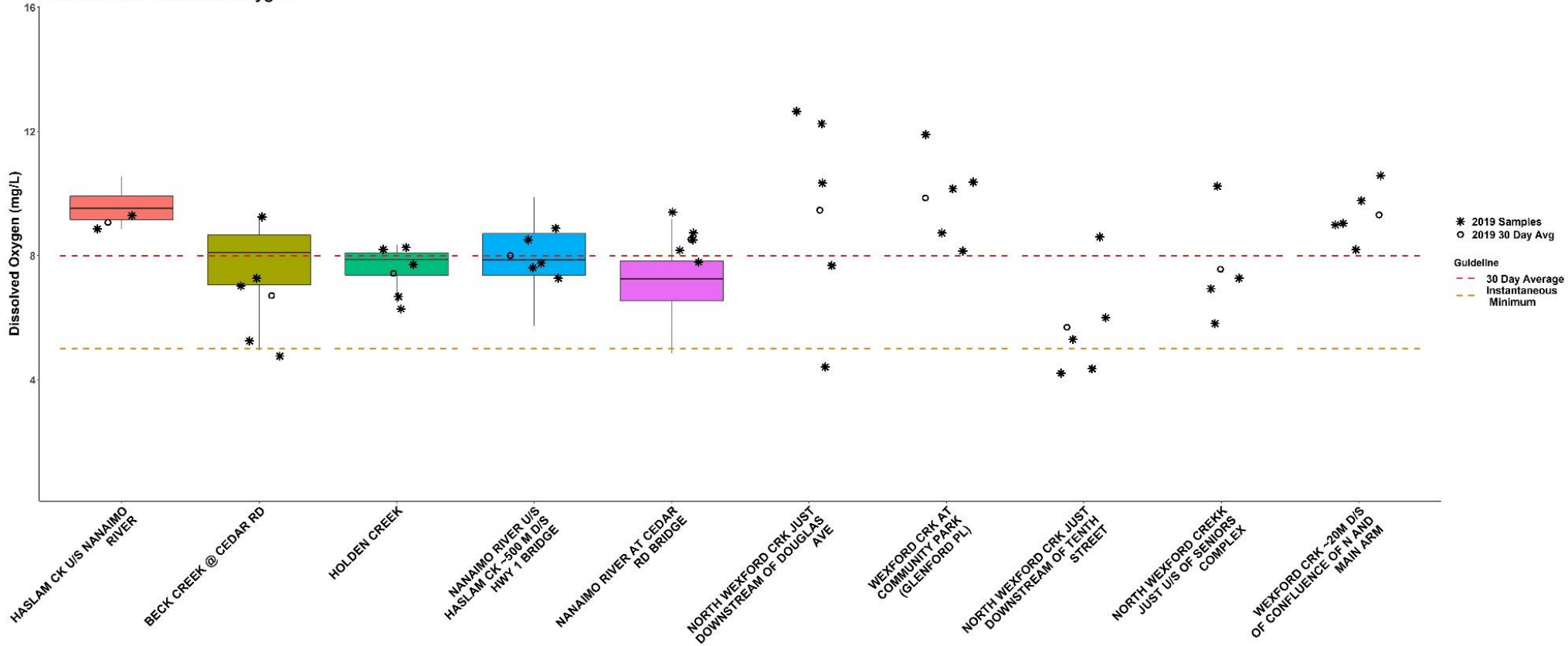
WR6 Summer Temperature



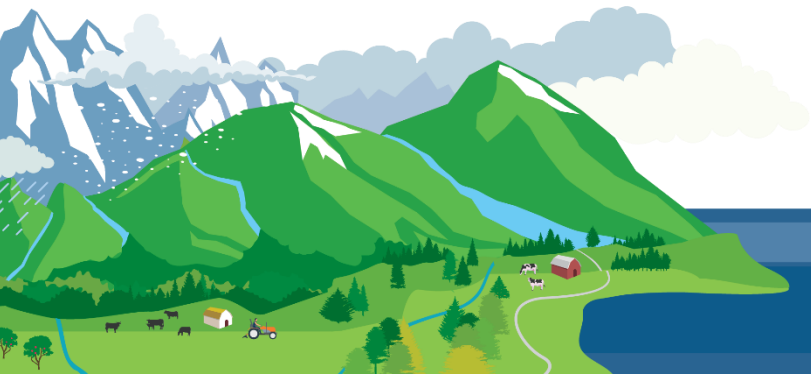
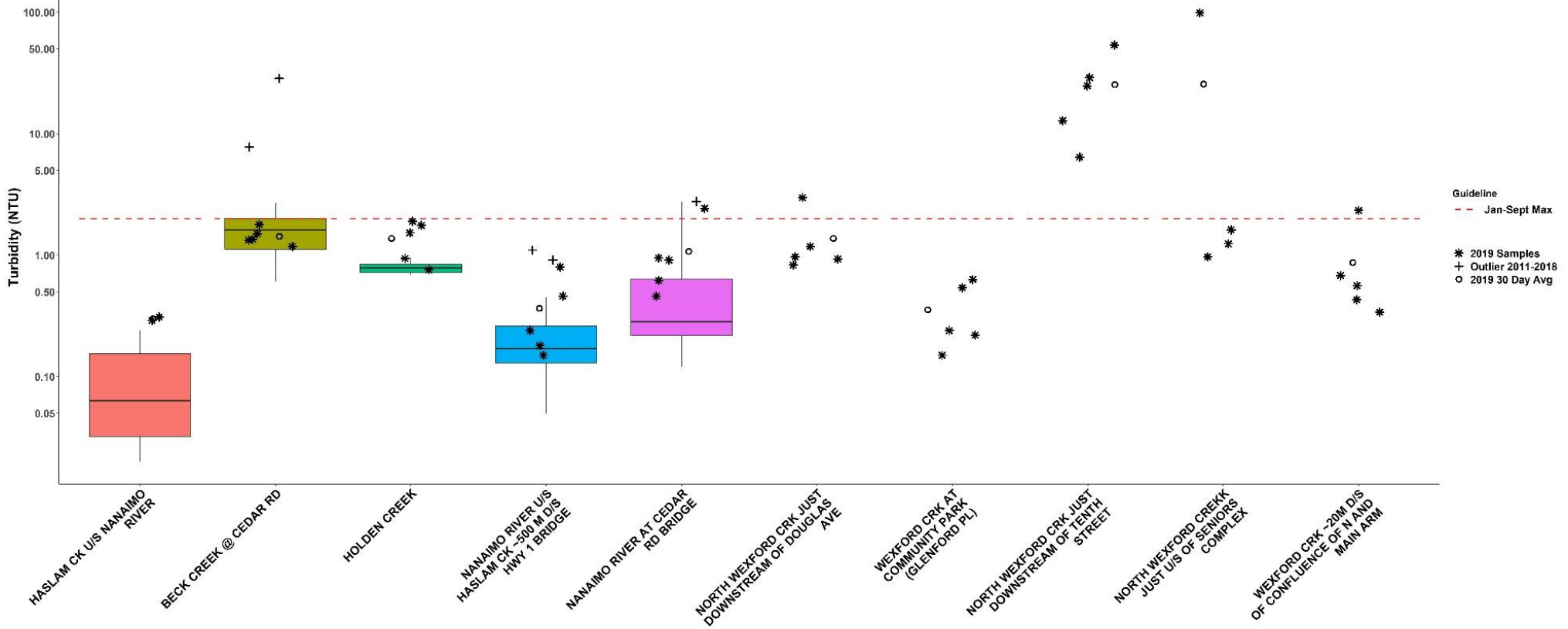
WR6 Fall Temperature



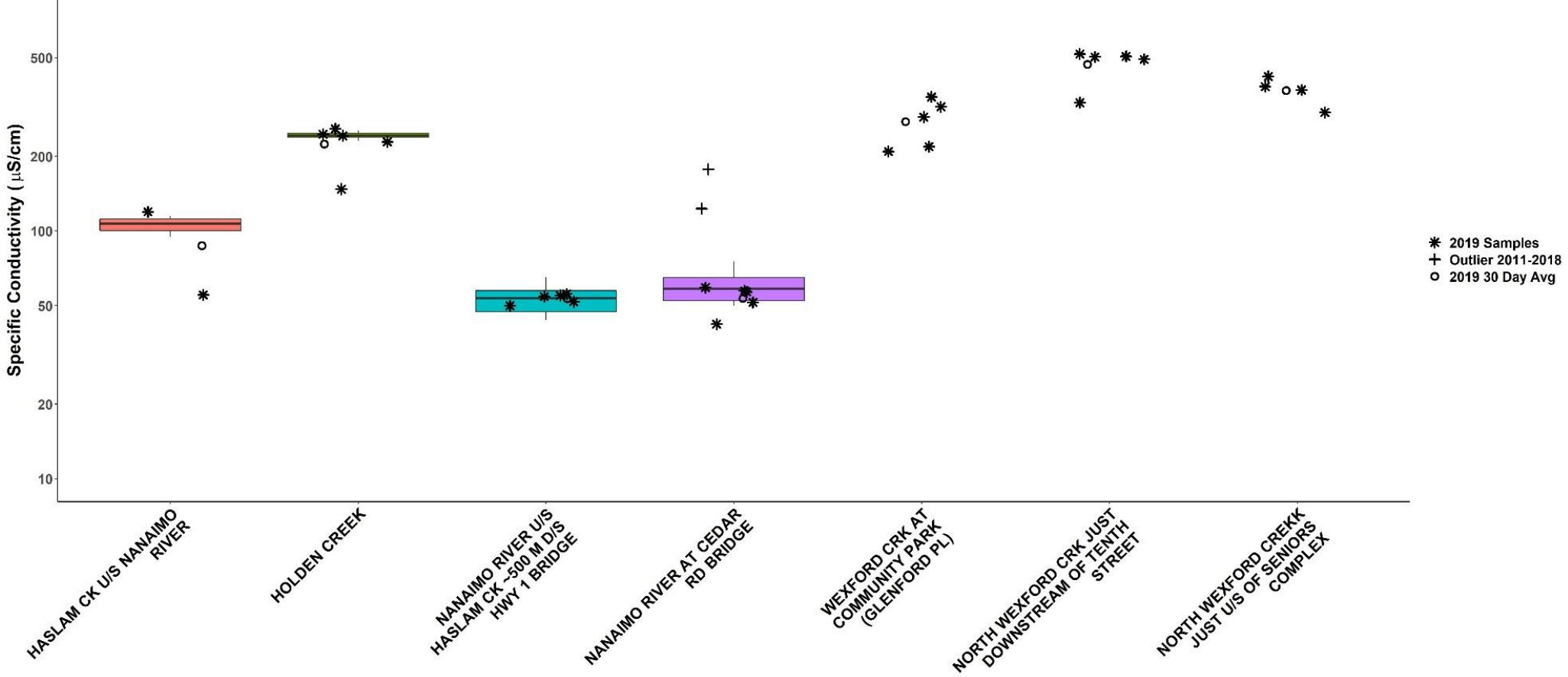
WR6 Summer Dissolved Oxygen



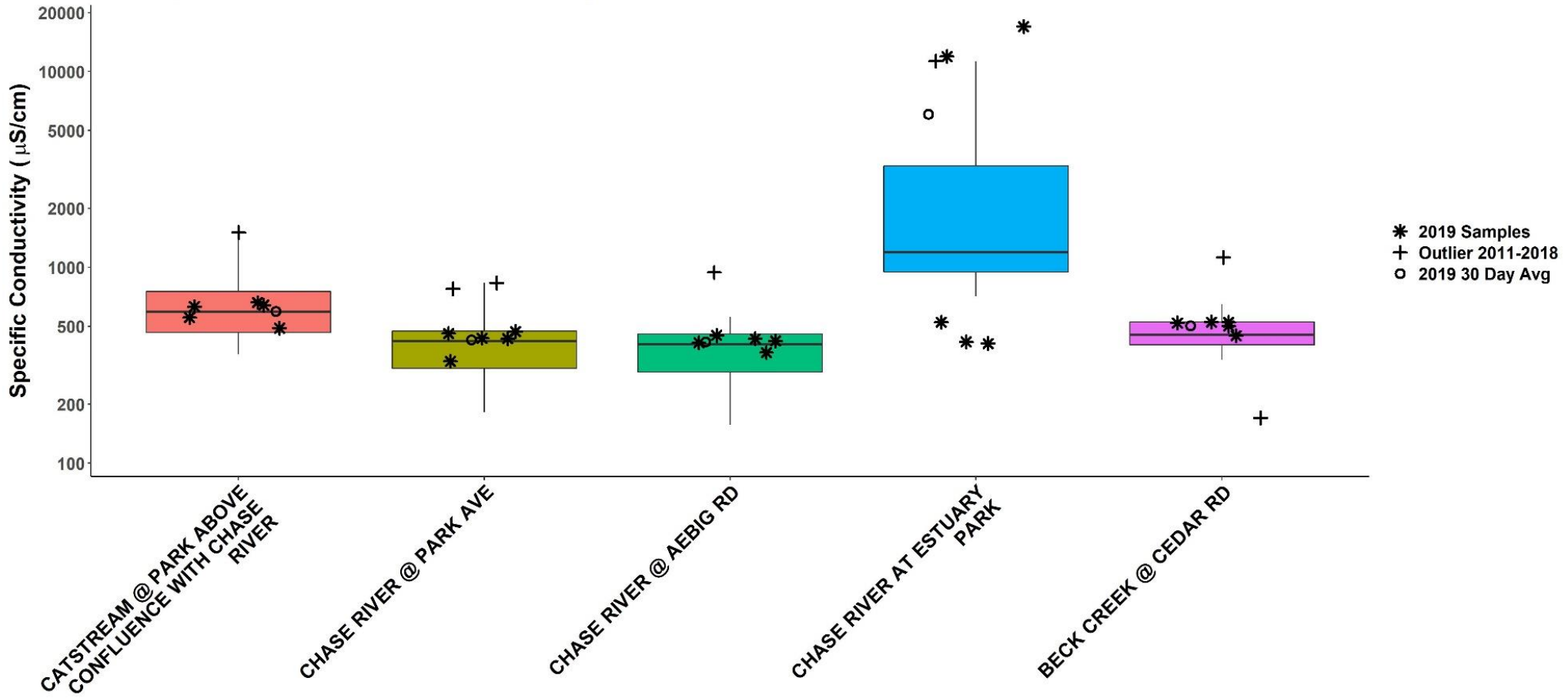
WR6 Summer Turbidity



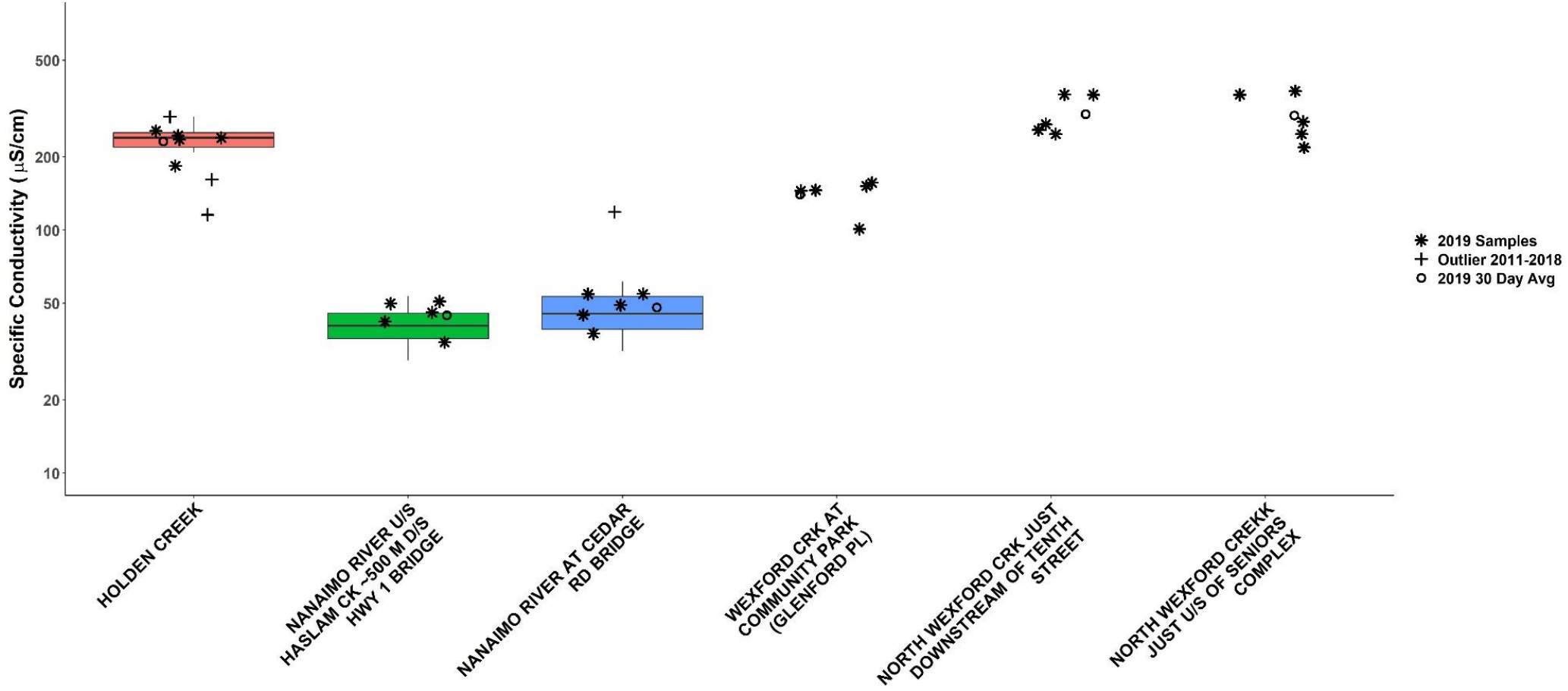
WR6 Summer Conductivity



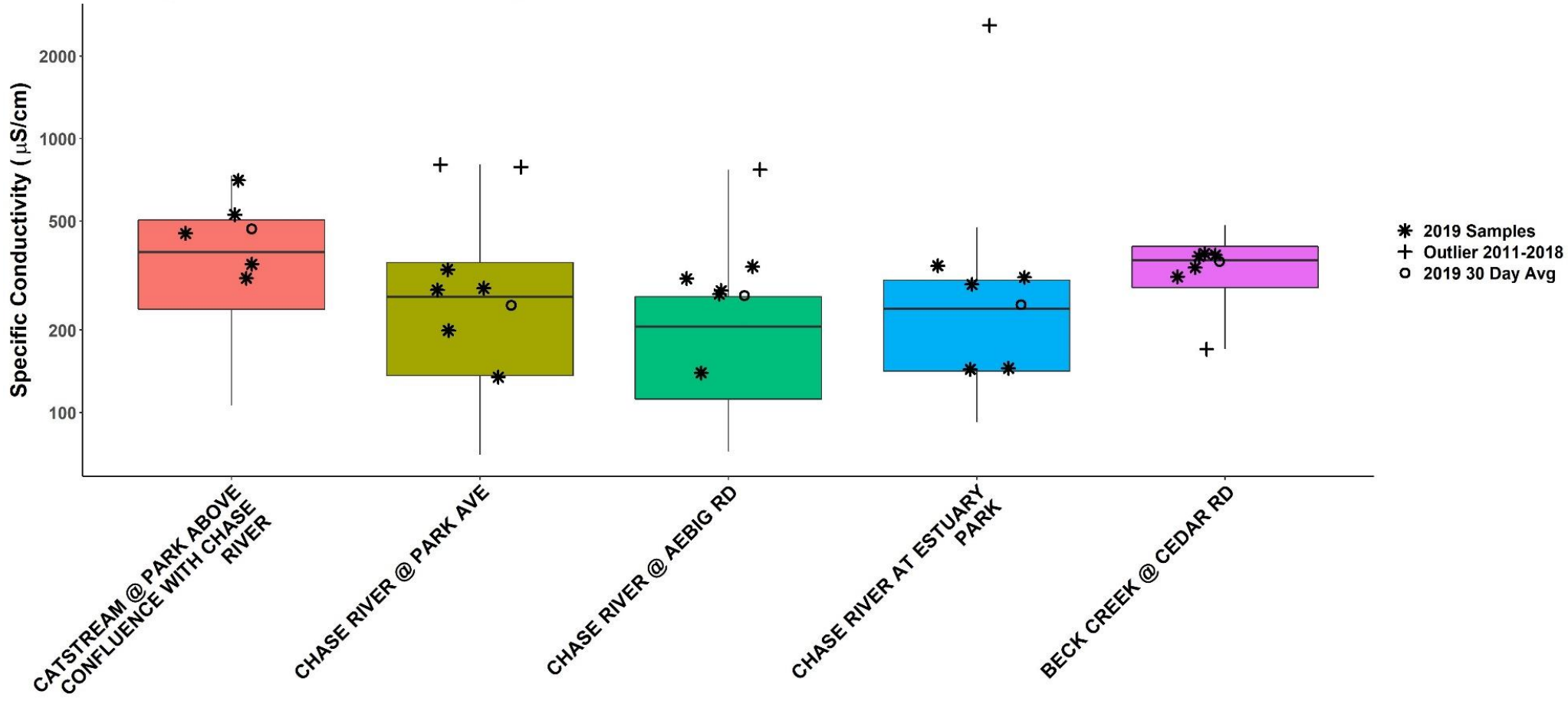
Estuary WR5 WR6 Summer Conductivity



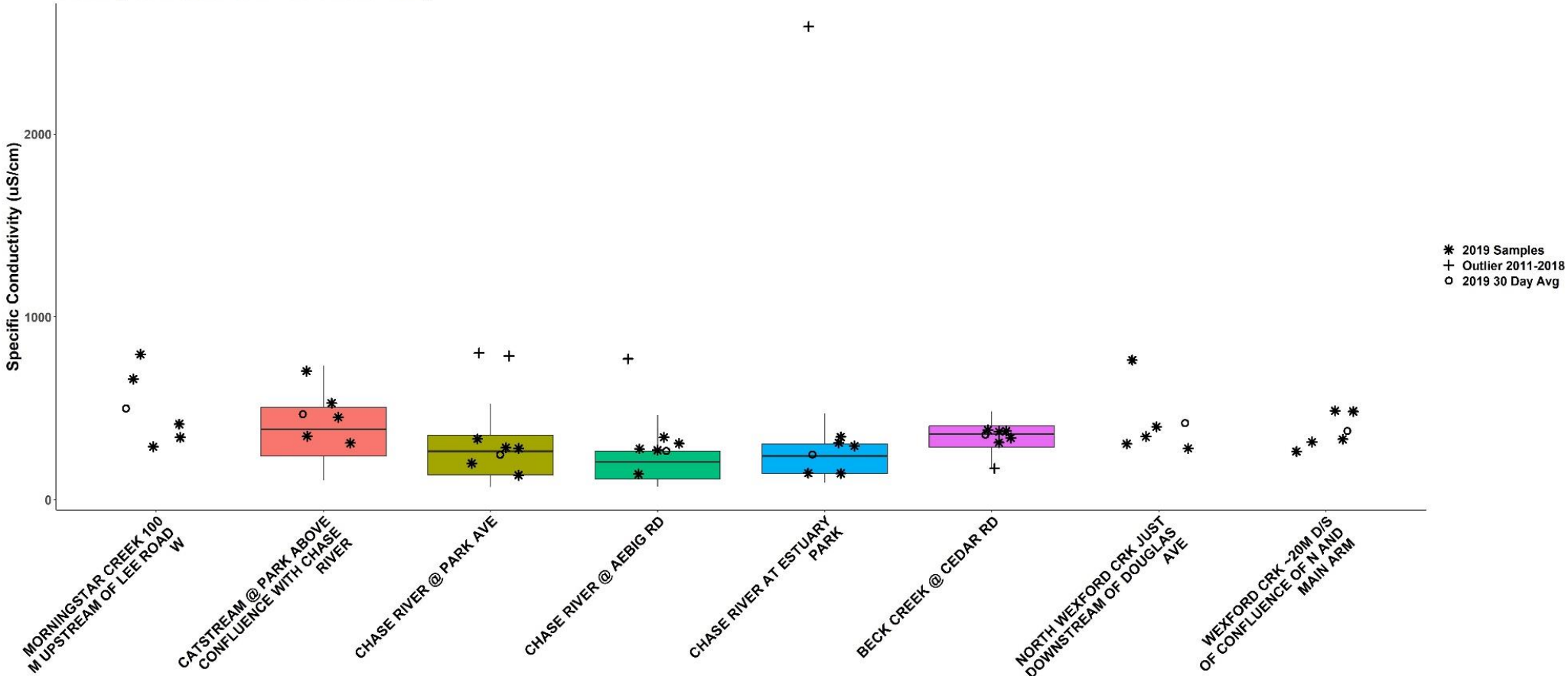
WR6 Fall Conductivity



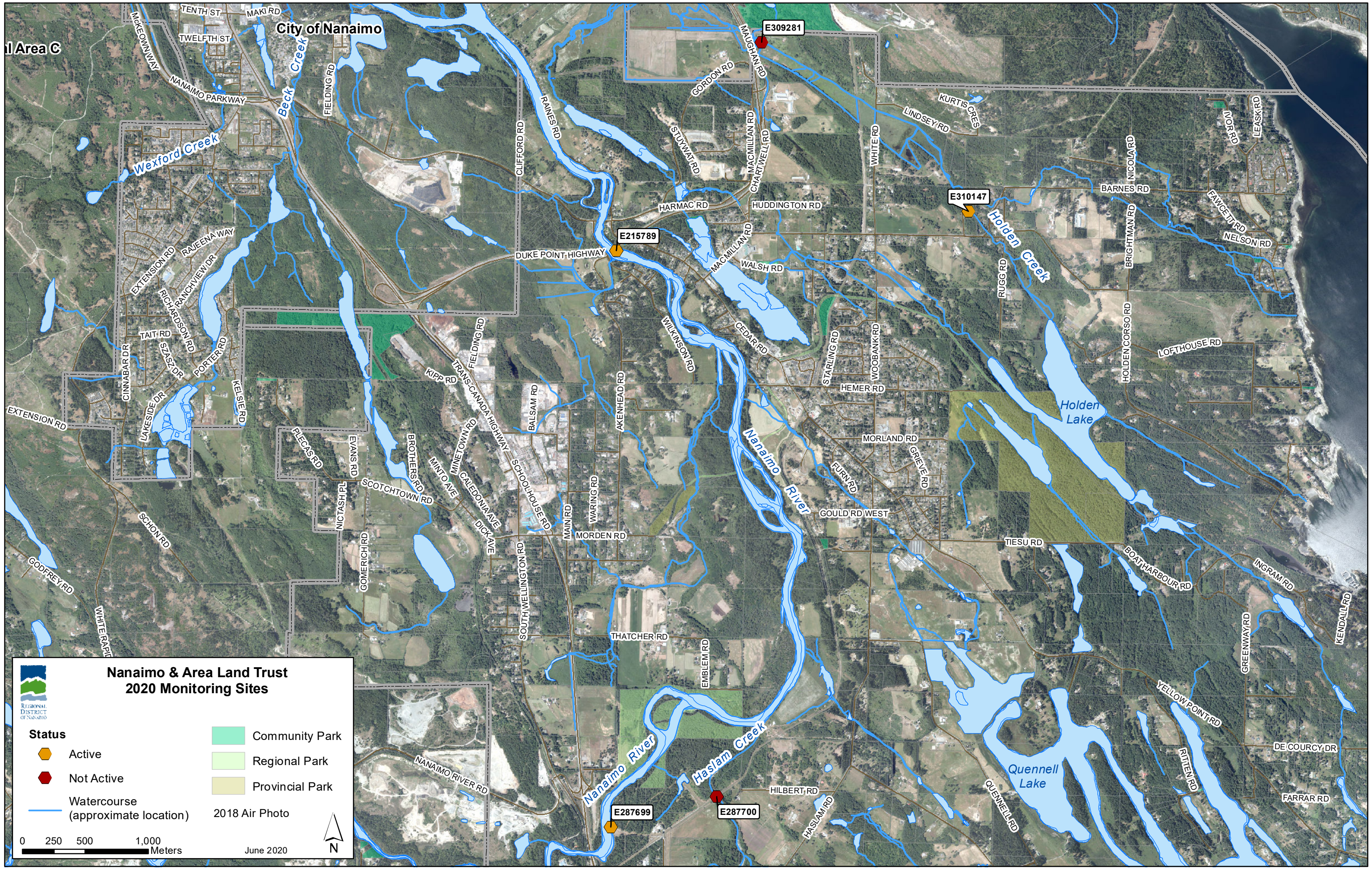
Estuary WR5 WR6 Fall Conductivity



Estuary WR3 WR5 WR6 Fall Conductivity







**Nanaimo & Area Land Trust
2020 Monitoring Sites**

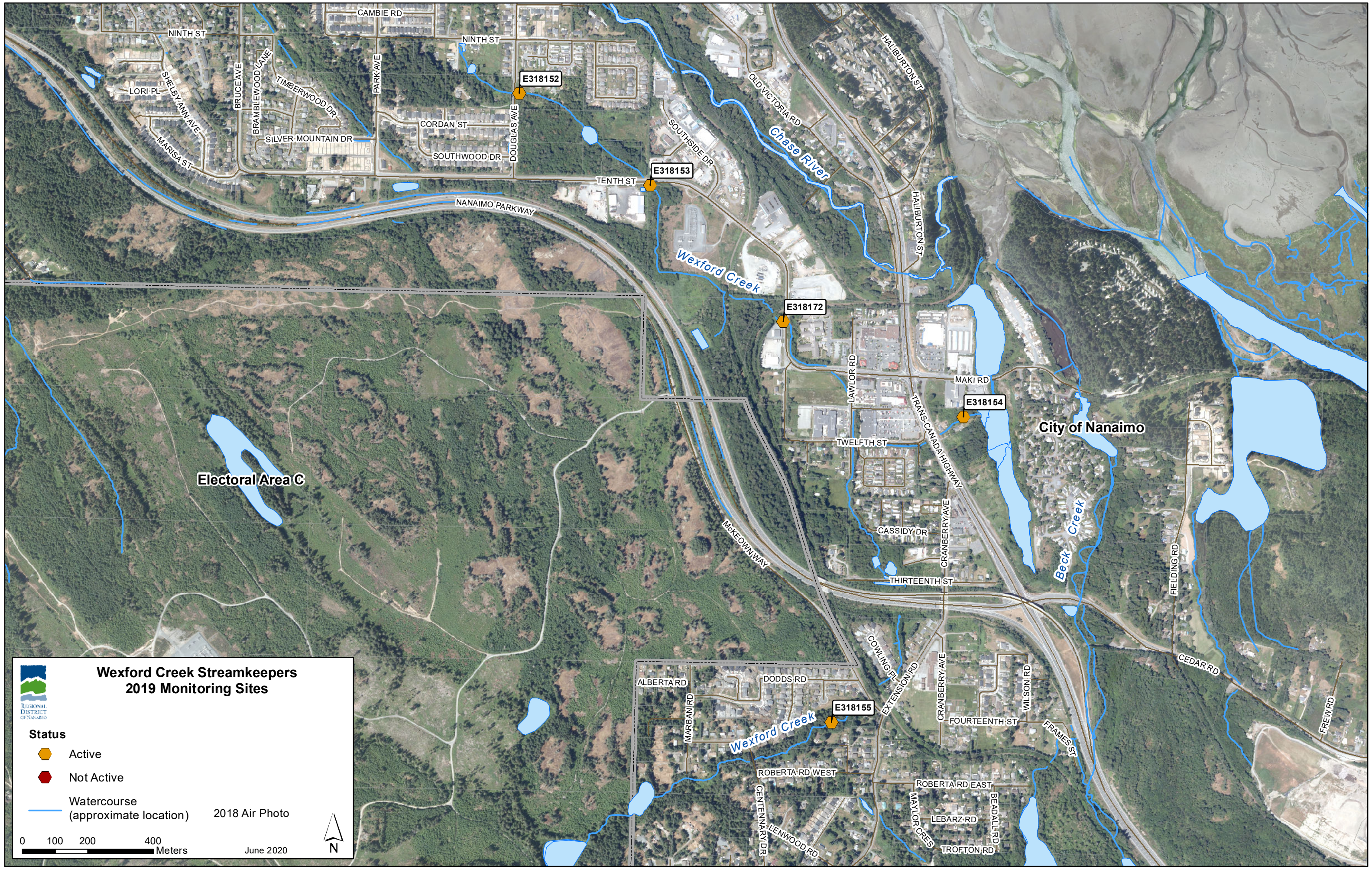
REGIONAL DISTRICT OF NANAIMO

Status	Community Park
Active	Regional Park
Not Active	Provincial Park
Watercourse (approximate location)	2018 Air Photo

0 250 500 1,000 Meters

June 2020

N



**Wexford Creek Streamkeepers
2019 Monitoring Sites**

REGIONAL DISTRICT OF NANAIMO

Status

- Active
- Not Active

Watercourse
(approximate location) 2018 Air Photo

0 100 200 400
Meters

June 2020

N