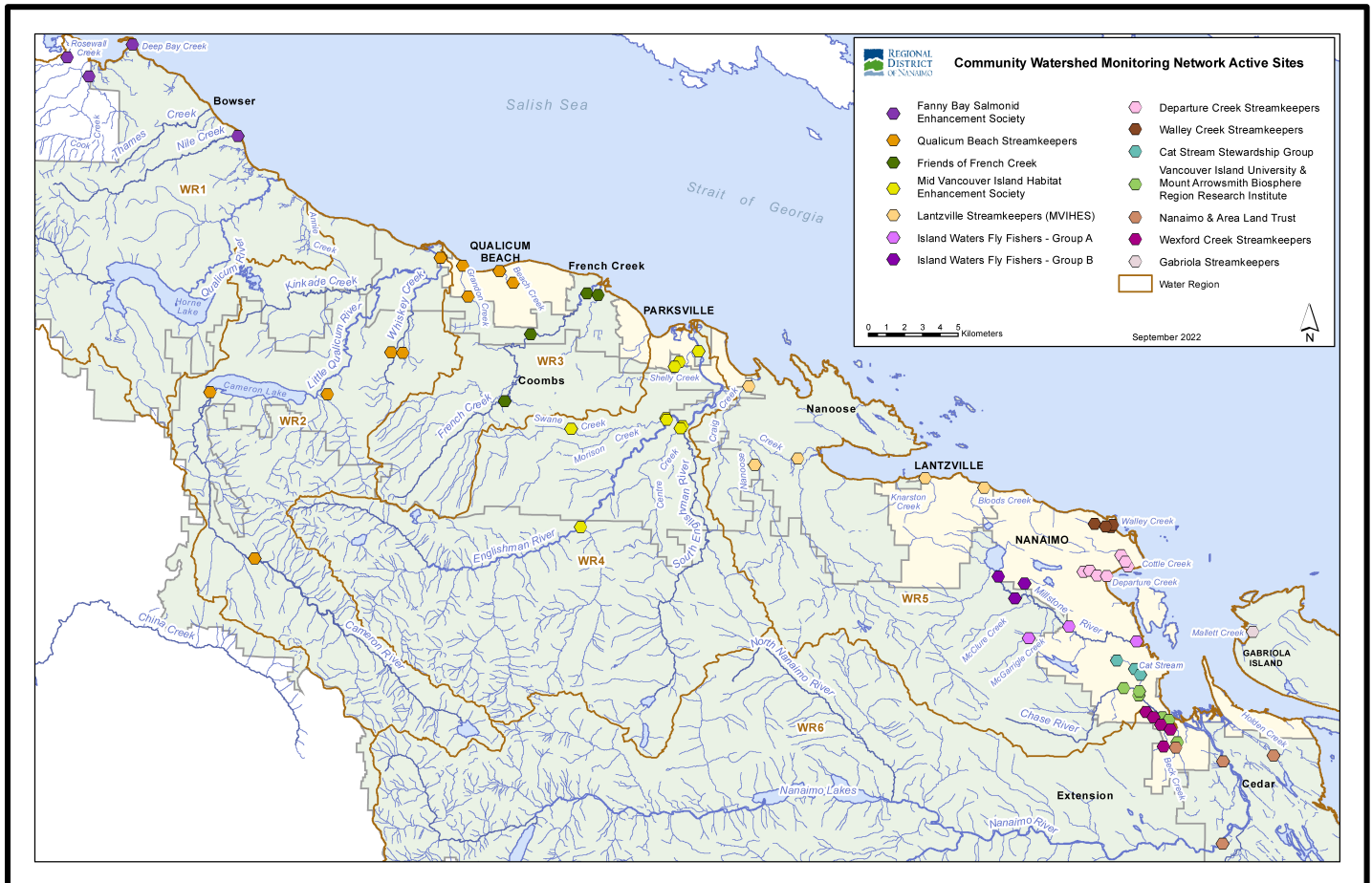


Community Watershed Monitoring Network

2022 Results by Water Region



Included in Water Region (WR) 4 package:

1. CWMN WR4 sample sites
2. How to interpret a box plot
3. Box Plot Comparison – 2022 data to previous years: *displayed by parameter (Turbidity, Dissolved Oxygen, Temperature, Conductivity) & sample period (summer, fall)*
4. Mid Vancouver Island Habitat Enhancement Society (MVIHES)



Water Region 4
sampled by:

**Mid Vancouver Island Habitat
Enhancement Society (MVIHES)**



WR4 CWMN Sample Sites:

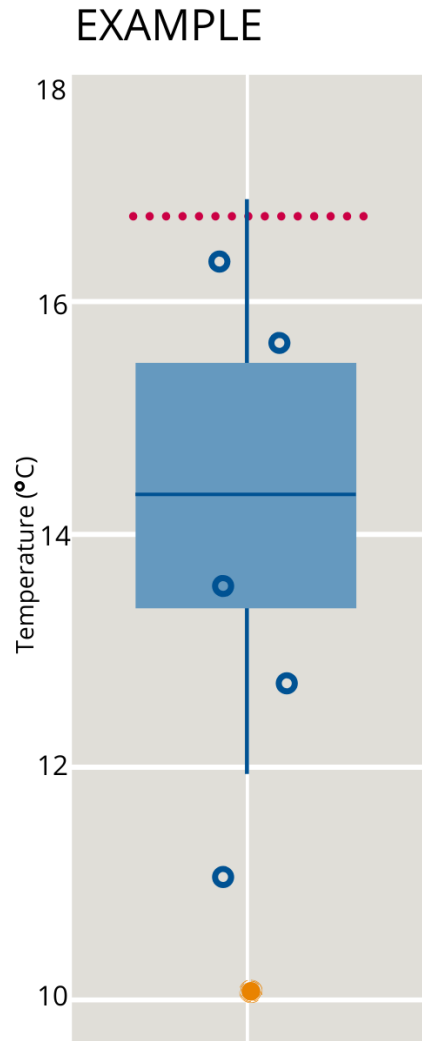
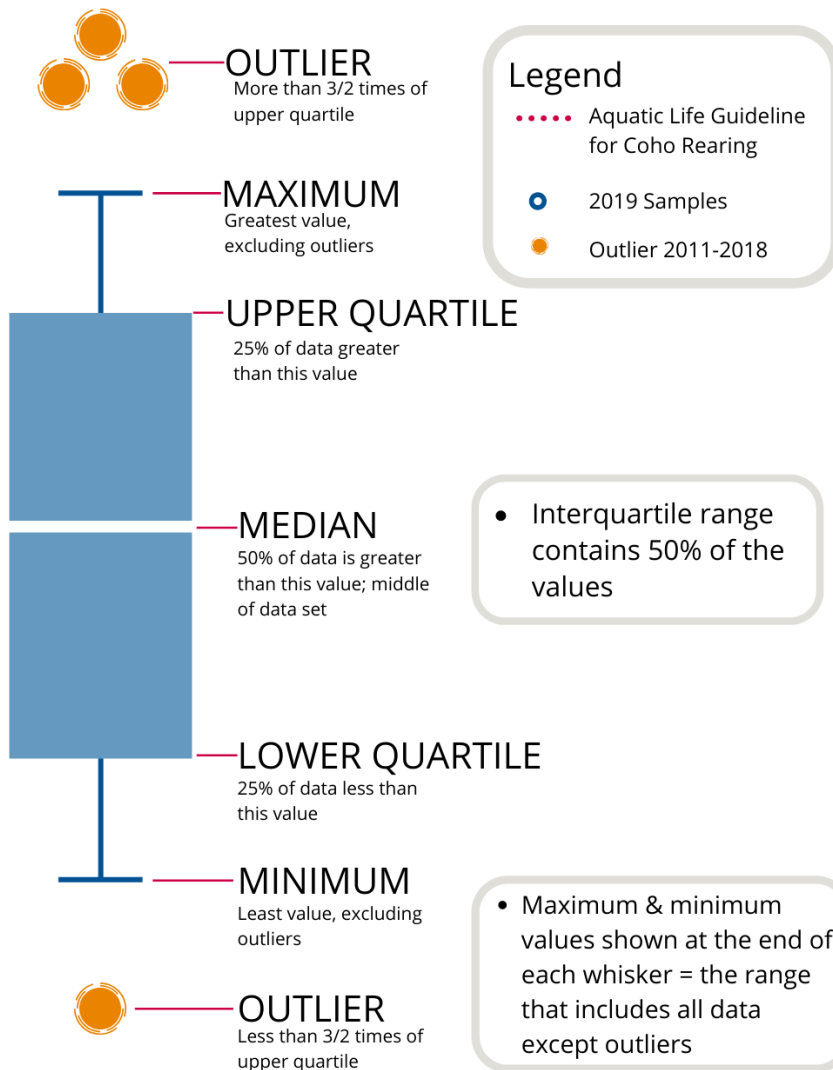
The table below shows the sites monitored by each of the streamkeeper organizations, as well as the number of years and which years a site was sampled. The number of years is important to keep in mind when interpreting the box plots as the plot for each site may contain a slightly different temporal range.

Group	EMS ID	Geographic Description	Years Sampled	Years Monitored
MVIHES	E299852	Centre Creek, just upstream of the confluence with S Englishman	9	2014 – present
MVIHES	E248836	South Englishman River u/s from Englishman River	12	2011 – present
MVIHES	E282969	Upper Englishman River u/s Centre Fork Creek	12	2011 – present
MVIHES	E248834	Englishman River u/s from Morison Creek	12	2011 – present
MVIHES	E308186	Swayne Creek d/s of Errington Road	9	2014 – present
MVIHES	E248835	Morison Creek u/s from Englishman River	12	2011 – present
MVIHES	E287131	Shelly Creek @ Hamilton Road	9	2014 – present
MVIHES	E290452	Shelly Creek at end of Blower Road	8.5	2014 – present*
MVIHES	0121580	Englishman River at Highway 19A	12	2011 – present

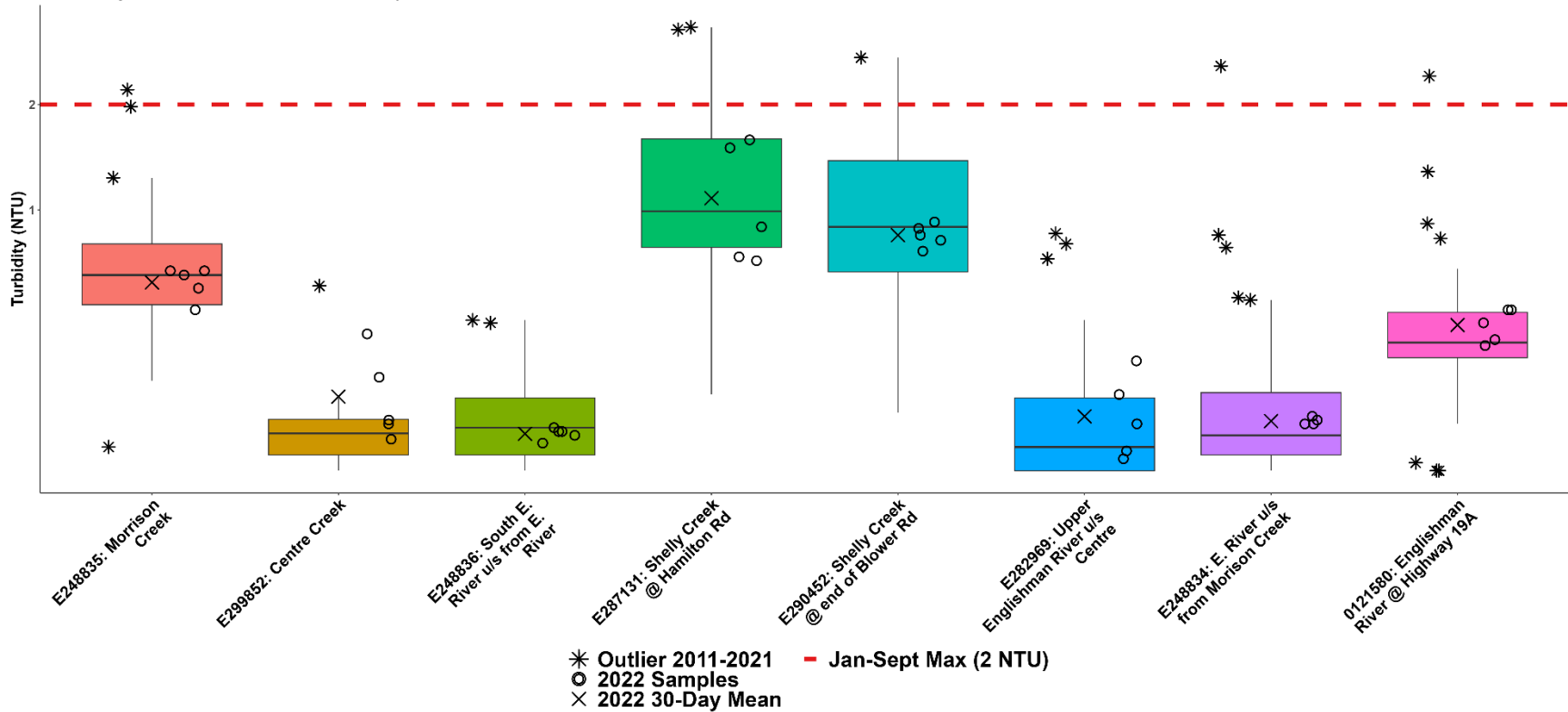
**Fall 2015 was not monitored to complete restoration work.*



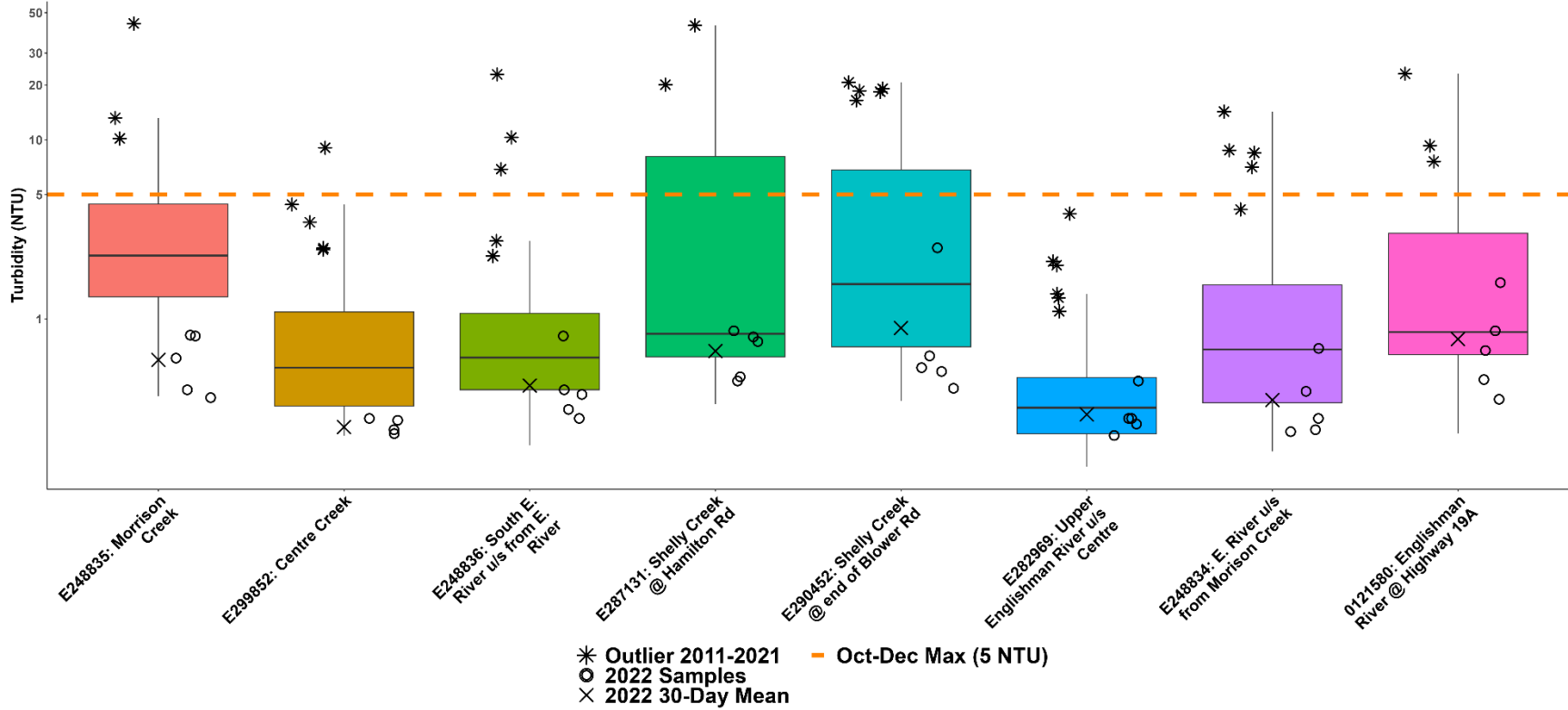
How to Interpret a Box Plot:



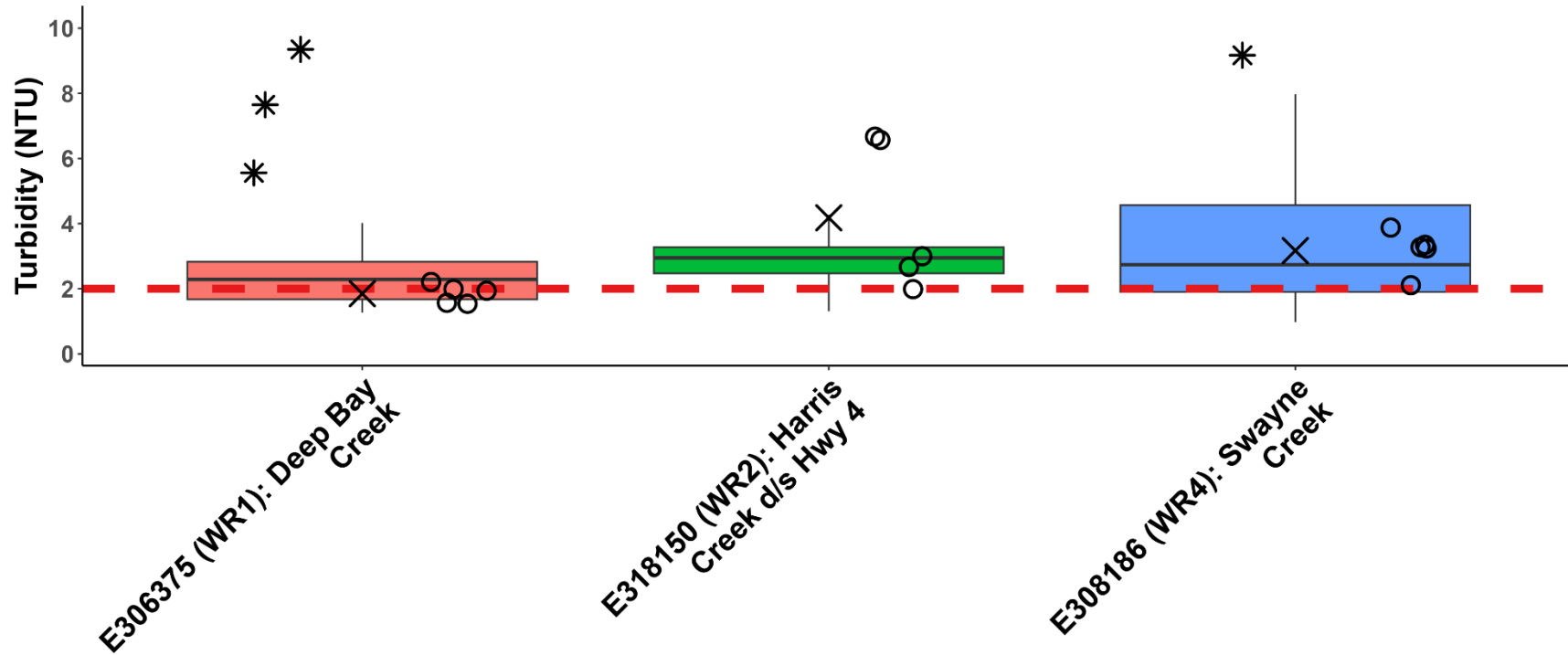
WR4: Englishman River Summer Turbidity



WR4: Englishman River Fall Turbidity



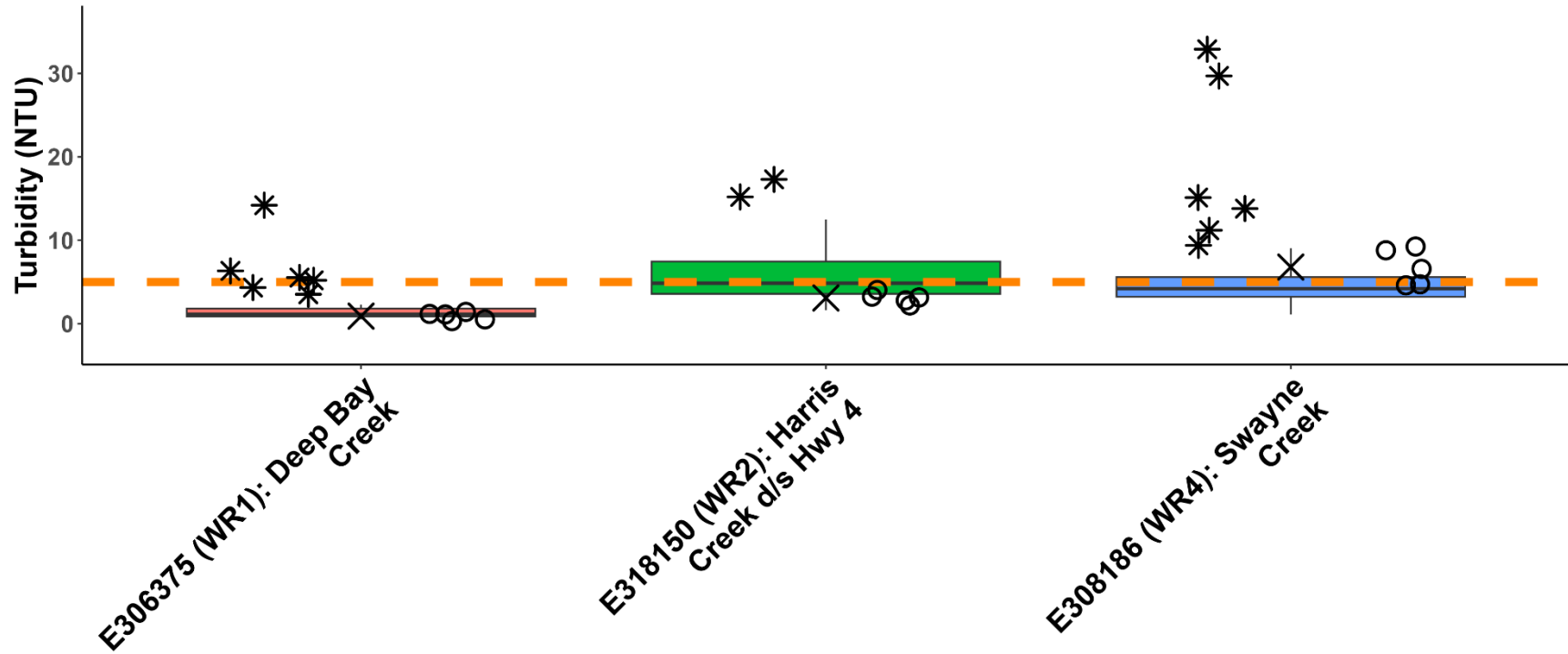
Sites with High Summer Turbidity Values



* Outlier 2014-2021 - Jan-Sept Max (2 NTU)
 ○ 2022 Samples
 × 2022 30-Day Mean



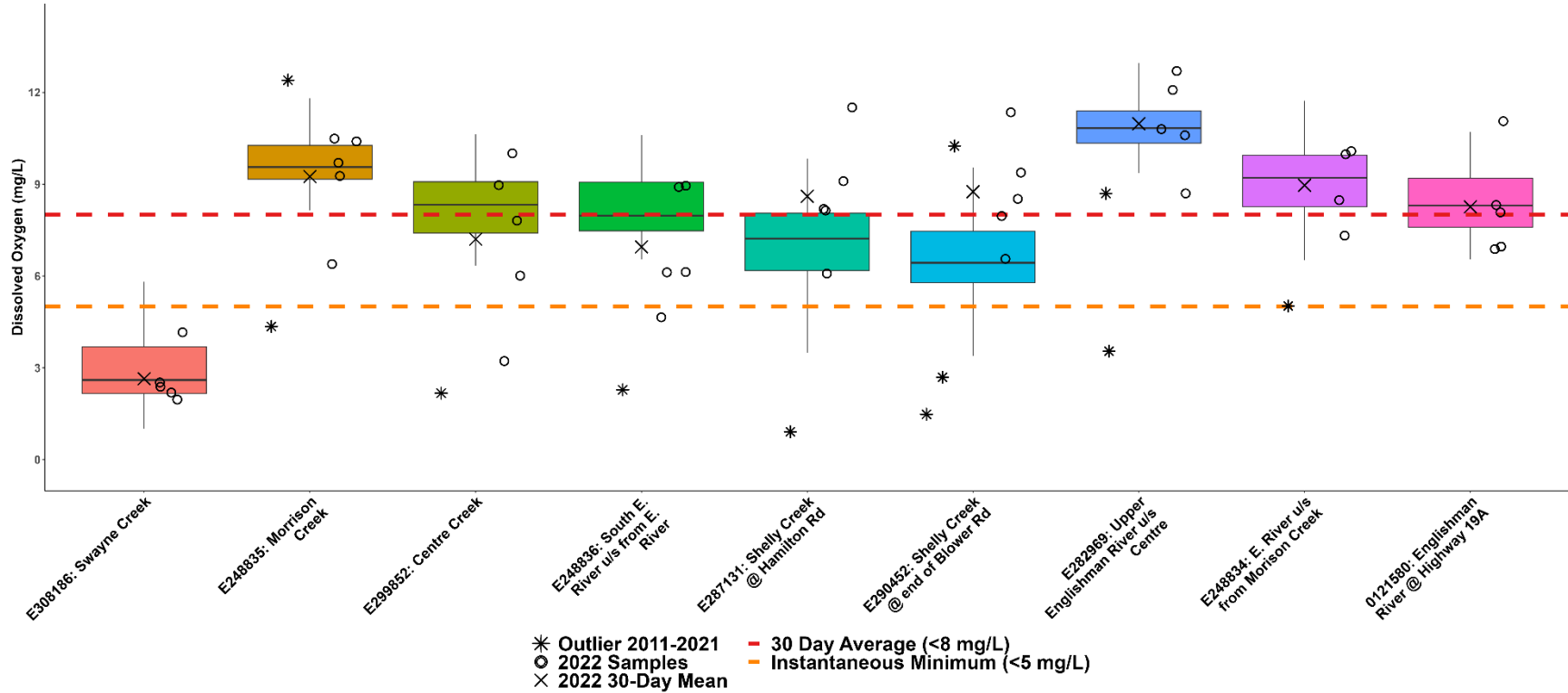
Sites with High Fall Turbidity Values



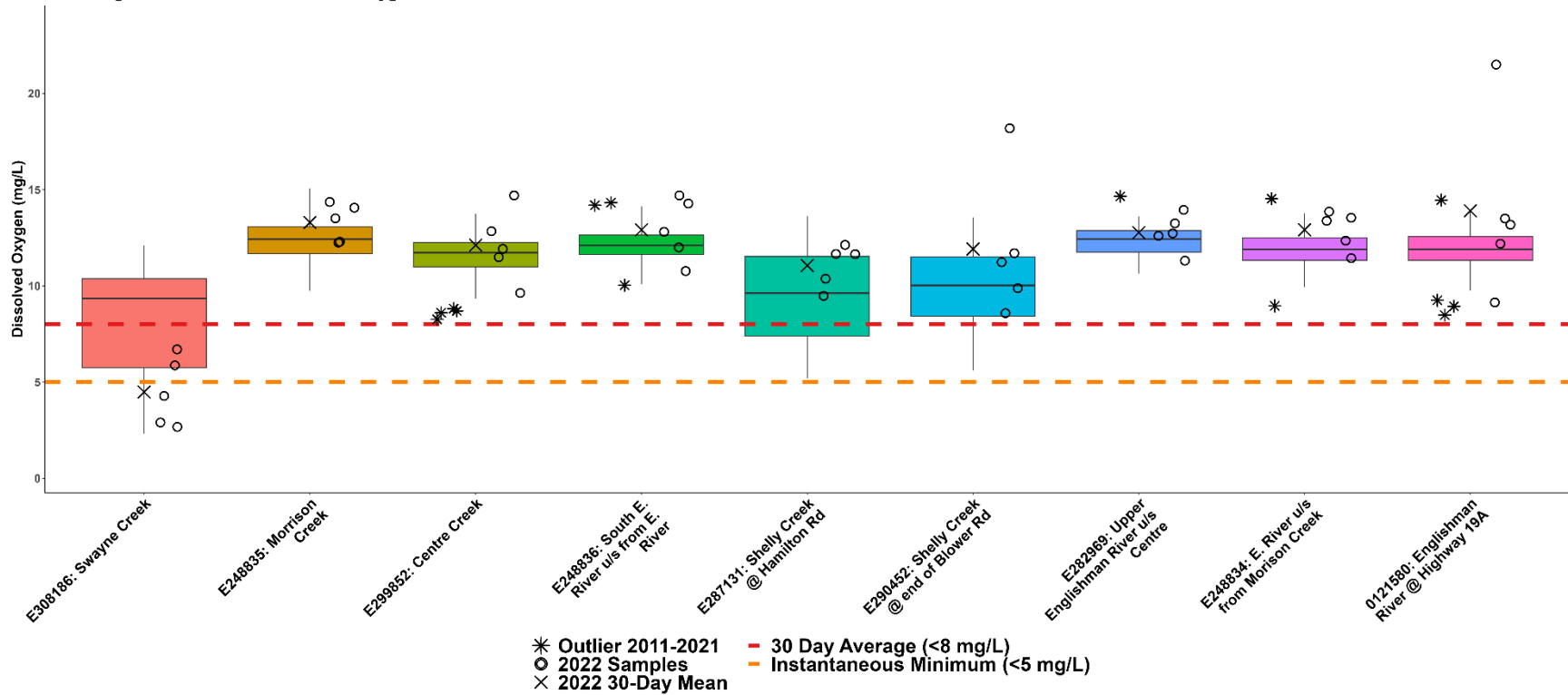
- * Outlier 2014-2021
- 2022 Samples
- × 2022 30-Day Mean
- Oct-Dec Max (5 NTU)



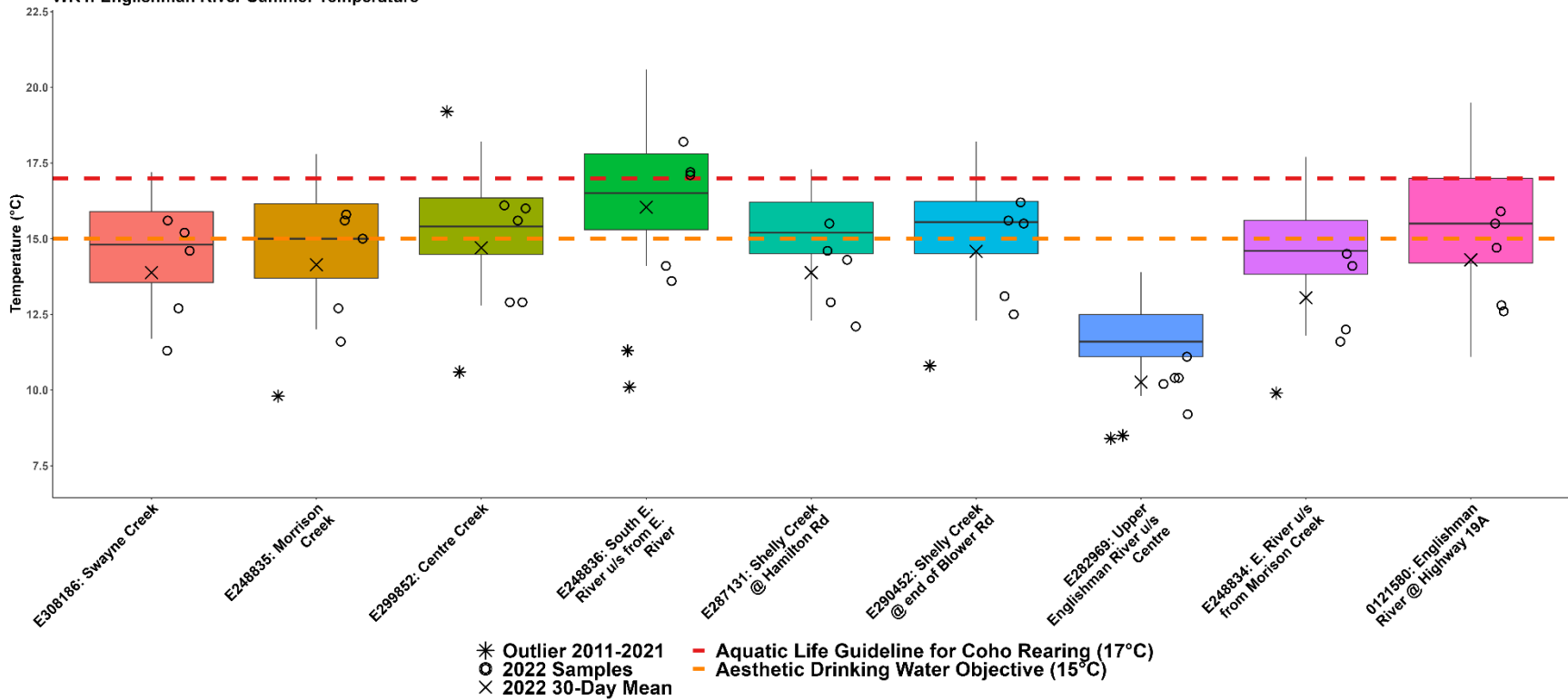
WR4: Englishman River Summer Dissolved Oxygen



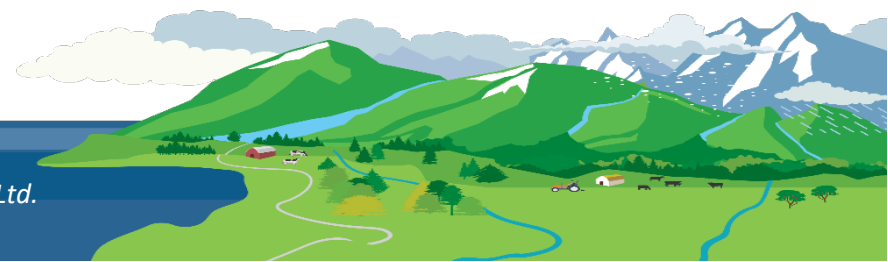
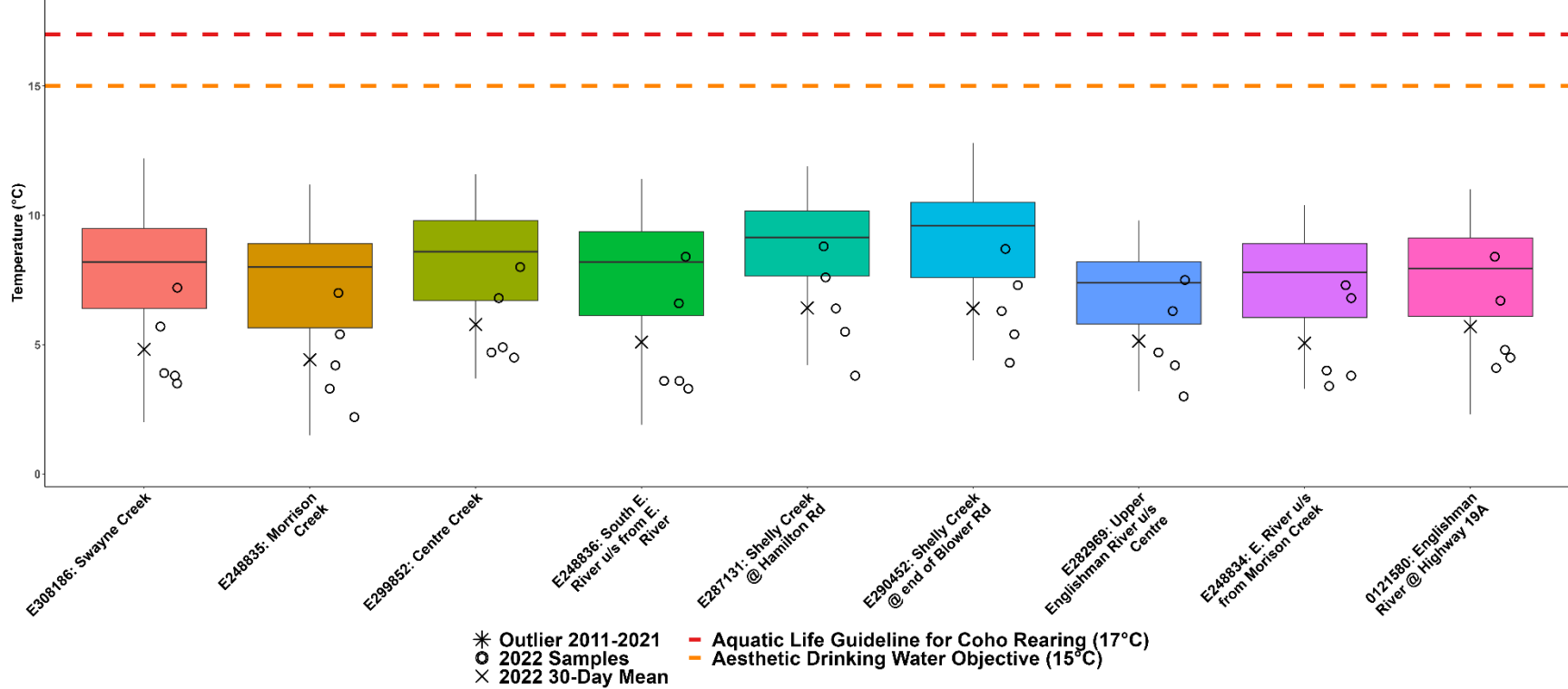
WR4: Englishman River Fall Dissolved Oxygen



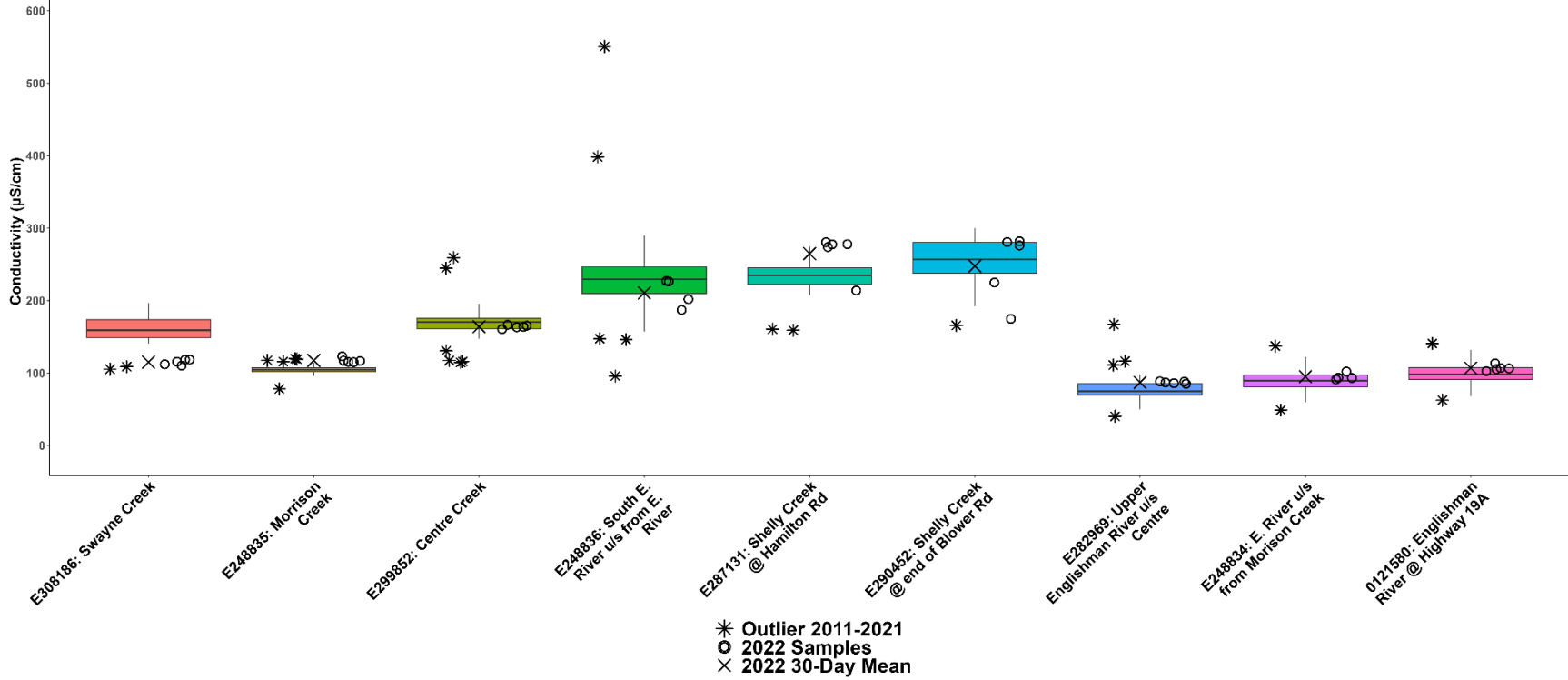
WR4: Englishman River Summer Temperature



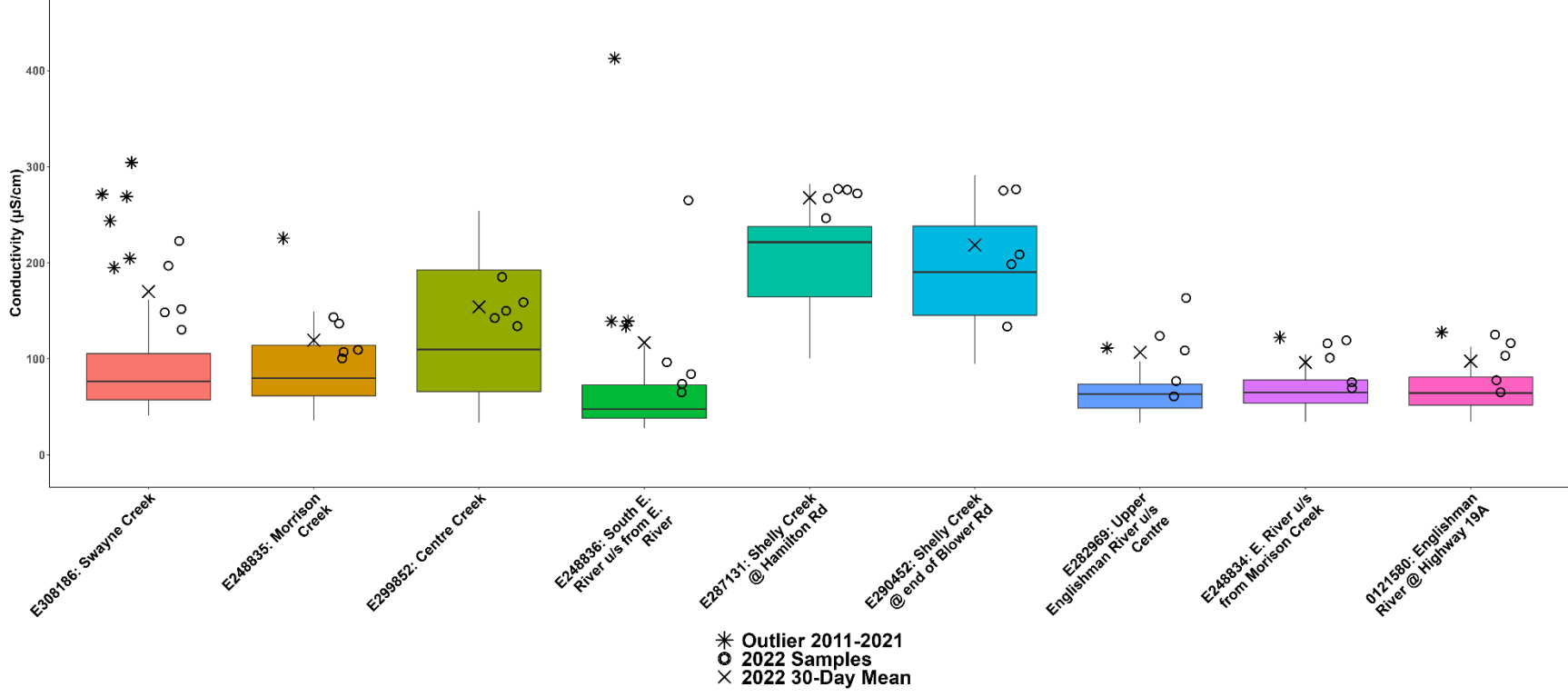
WR4: Englishman River Fall Temperature

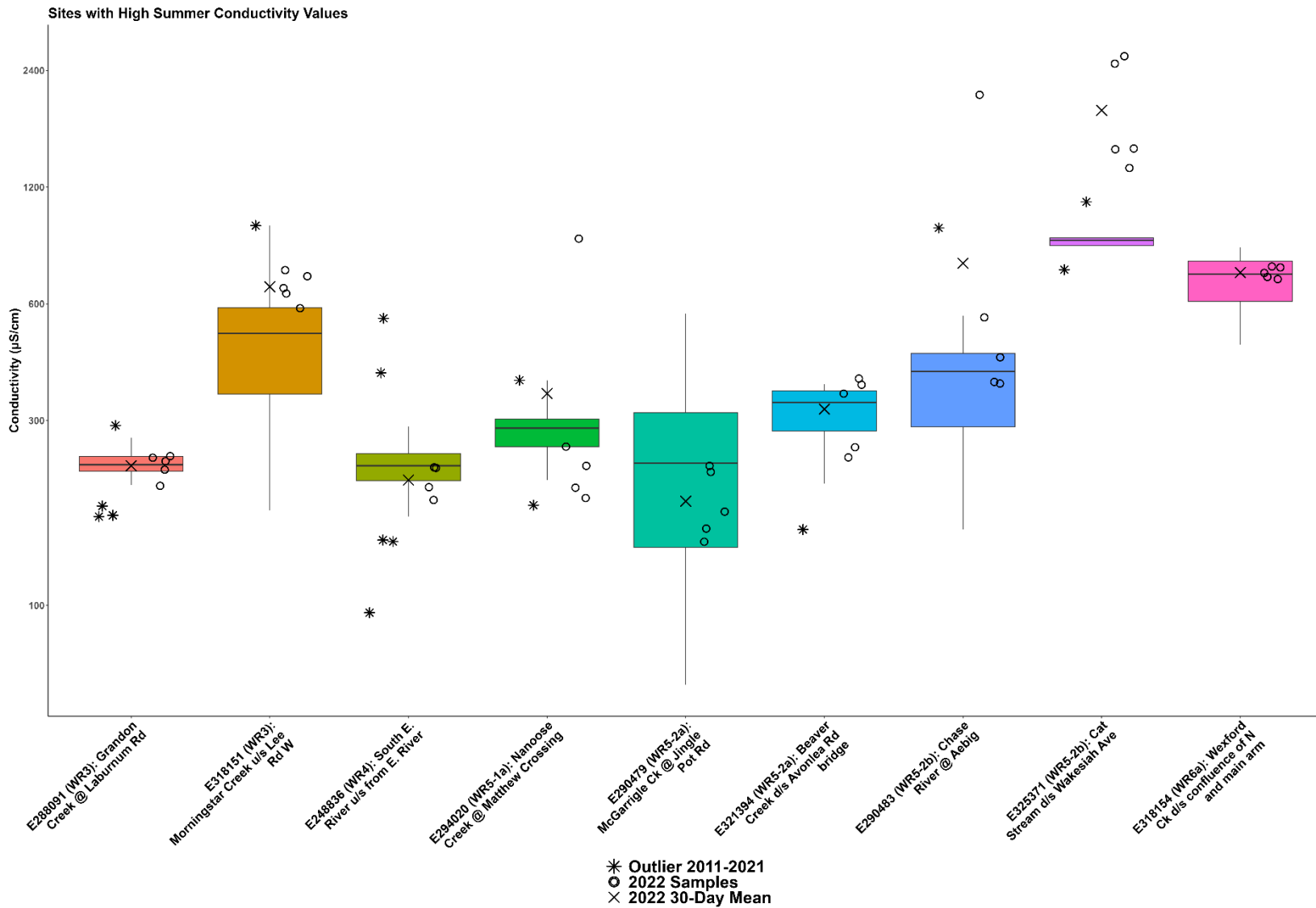


WR4: Englishman River Summer Conductivity

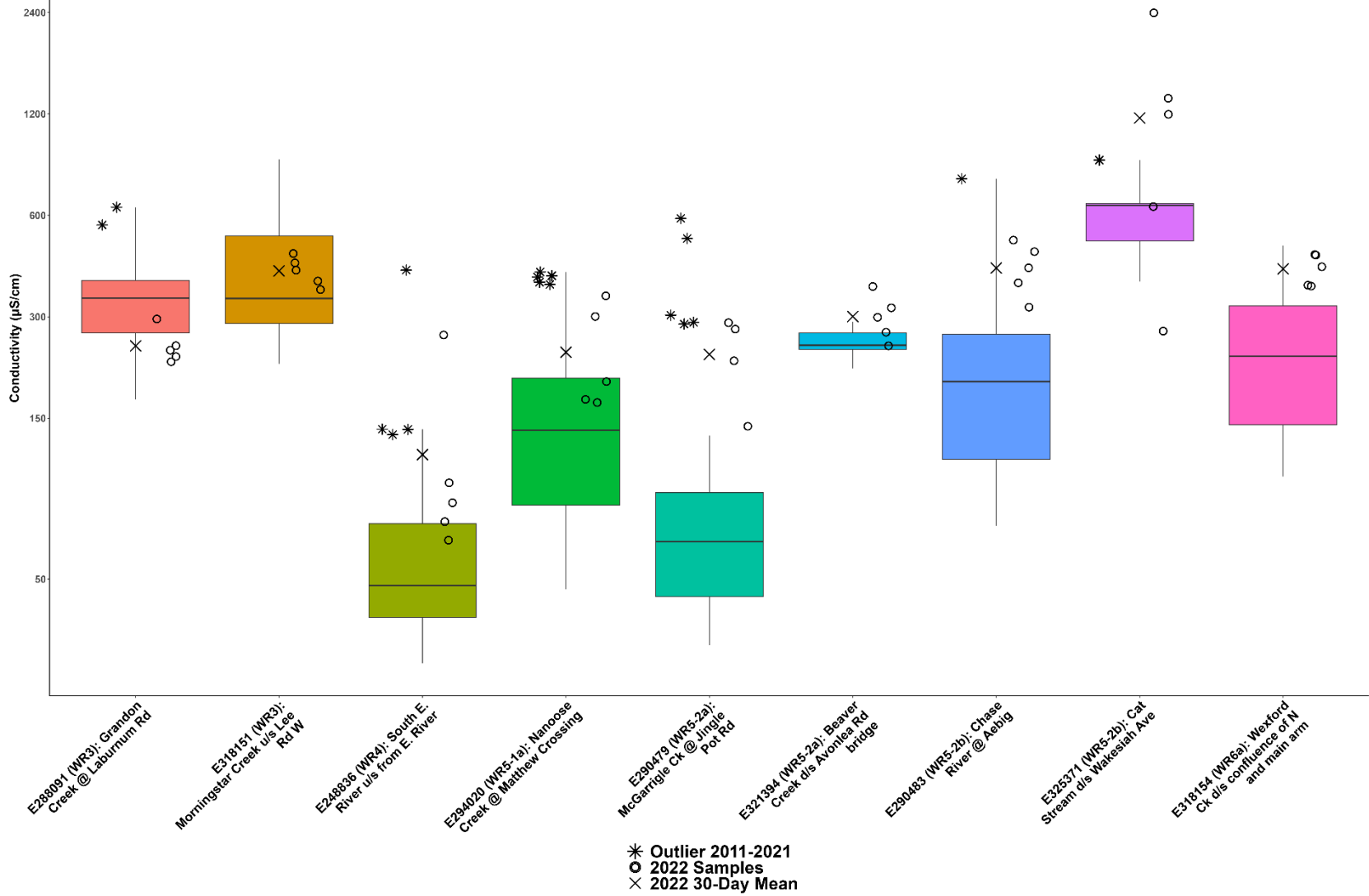


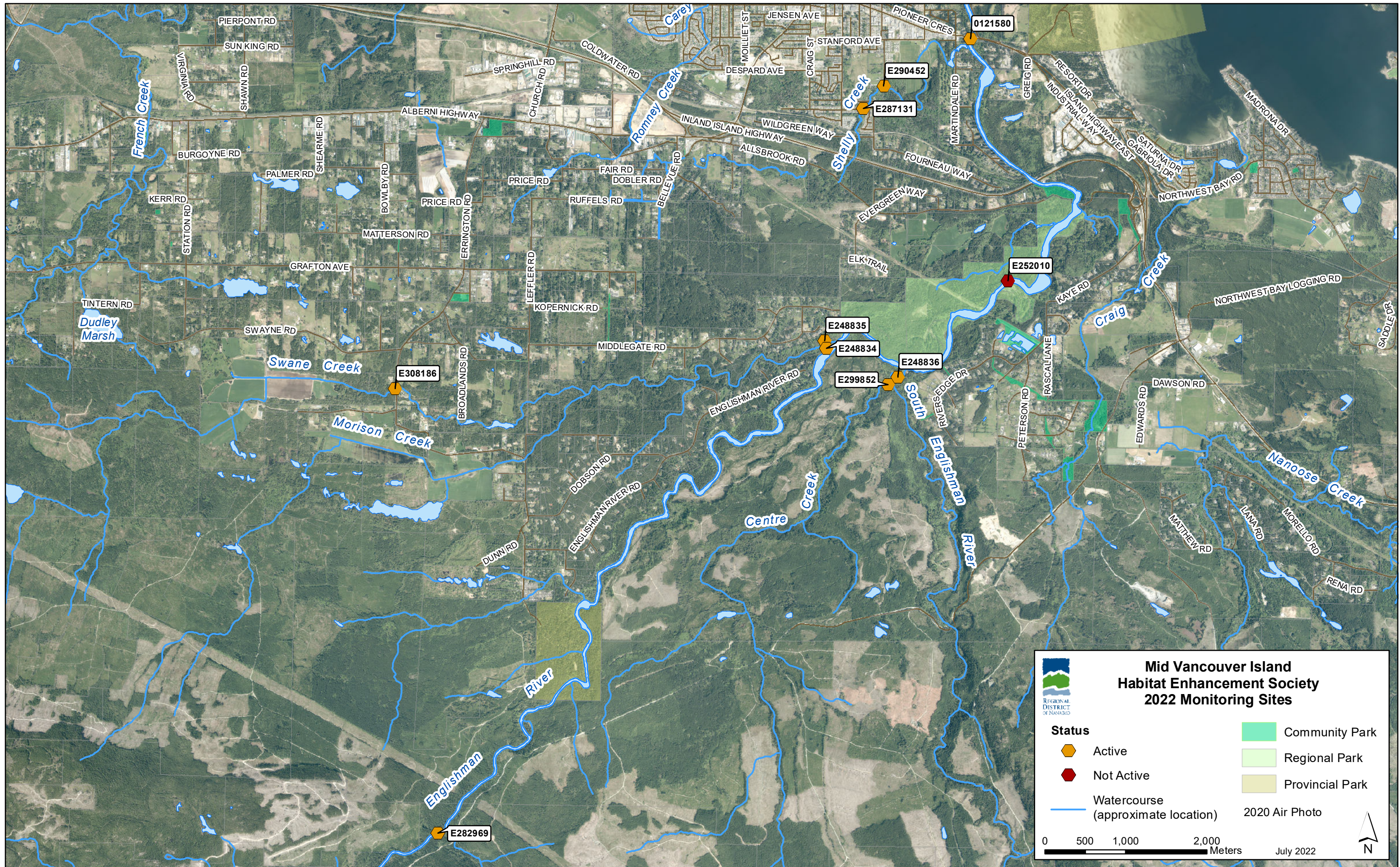
WR4: Englishman River Fall Conductivity





Sites with High Fall Conductivity Values





**Mid Vancouver Island
Habitat Enhancement Society
2022 Monitoring Sites**

REGIONAL DISTRICT OF NANAIMO

Status	Community Park
Active	Regional Park
Not Active	Provincial Park
Watercourse (approximate location)	2020 Air Photo

0 500 1,000 2,000 Meters

July 2022

N