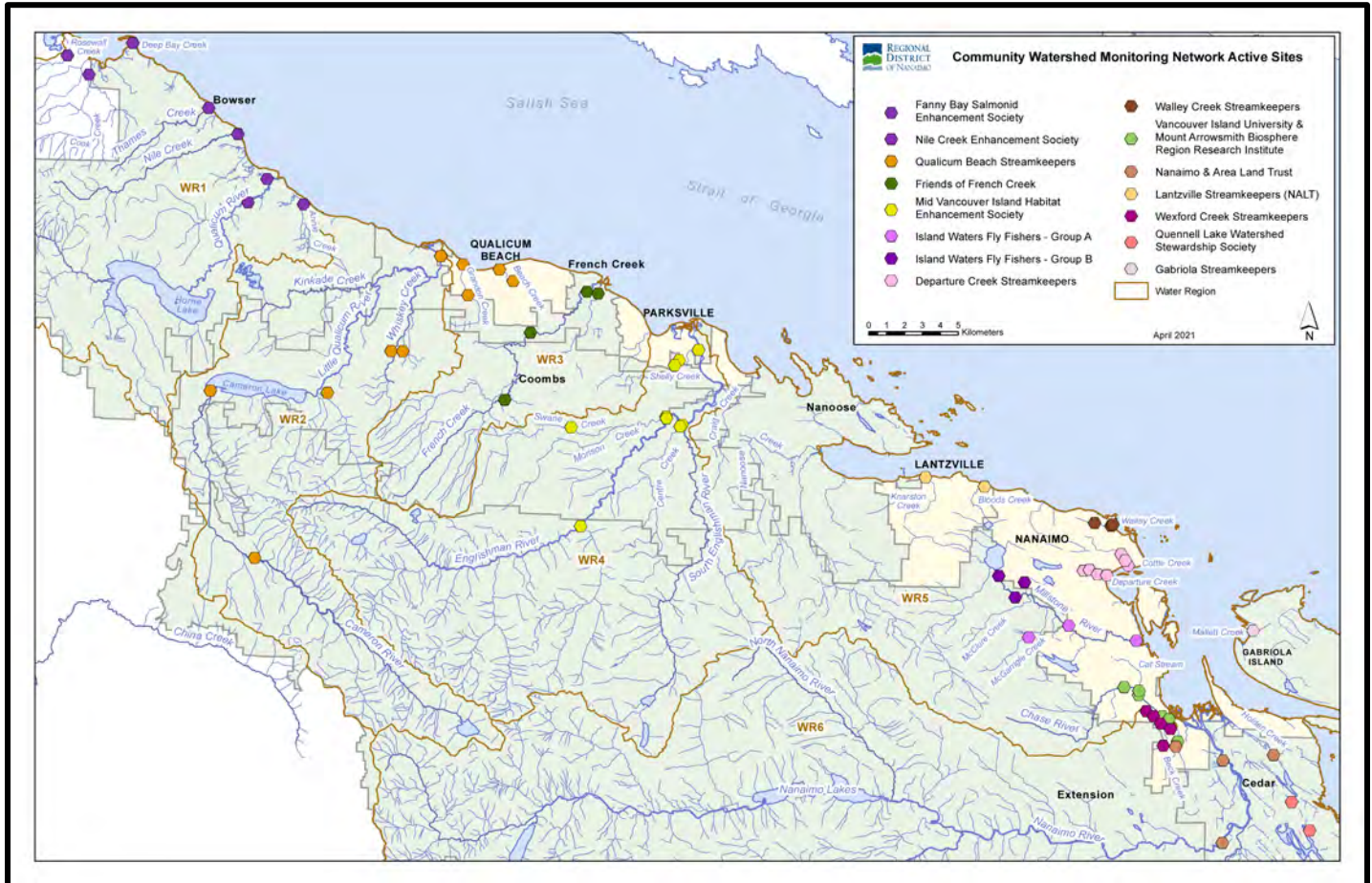


Community Watershed Monitoring Network 2021 Results by Water Region



Included in Water Region (WR) 4 package:

1. CWMN WR4 sample sites
2. How to interpret a box plot
3. Box Plot Comparison – 2021 data to previous years: *displayed by parameter (Temperature, Dissolved Oxygen, Turbidity, Conductivity) & sample period (summer, fall)*
4. MVIHES CWMN map of sample sites



Water Region 4
sampled by:
**Mid Vancouver Island Habitat
Enhancement Society (MVIHES)**

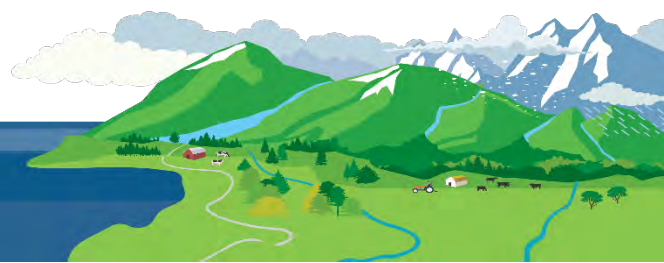


WR4 CWMN Sample Sites:

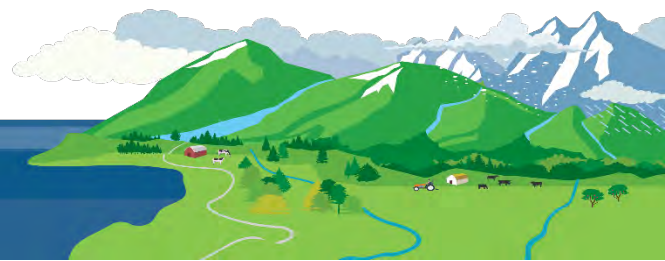
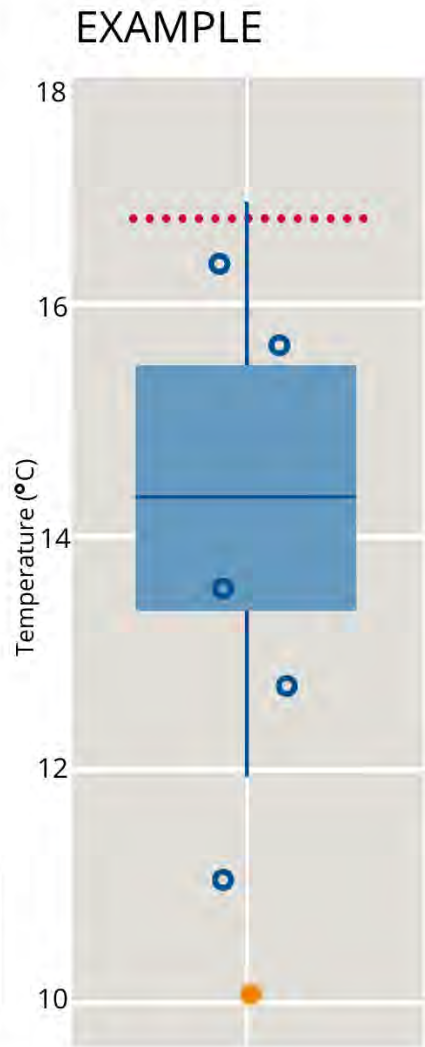
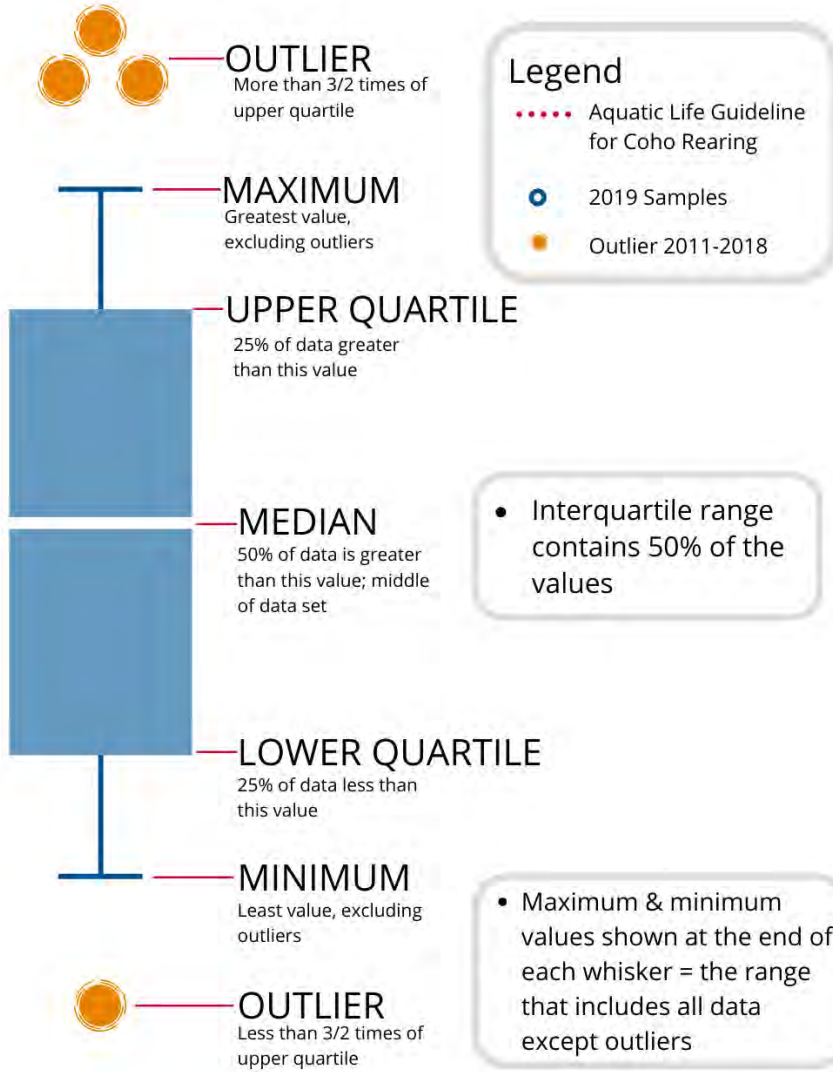
The table below shows the sites monitored by each of the streamkeeper organizations, as well as the number of years and which years a site was sampled. The number of years is important to keep in mind when interpreting the box plots as the plot for each site may contain a slightly different temporal range.

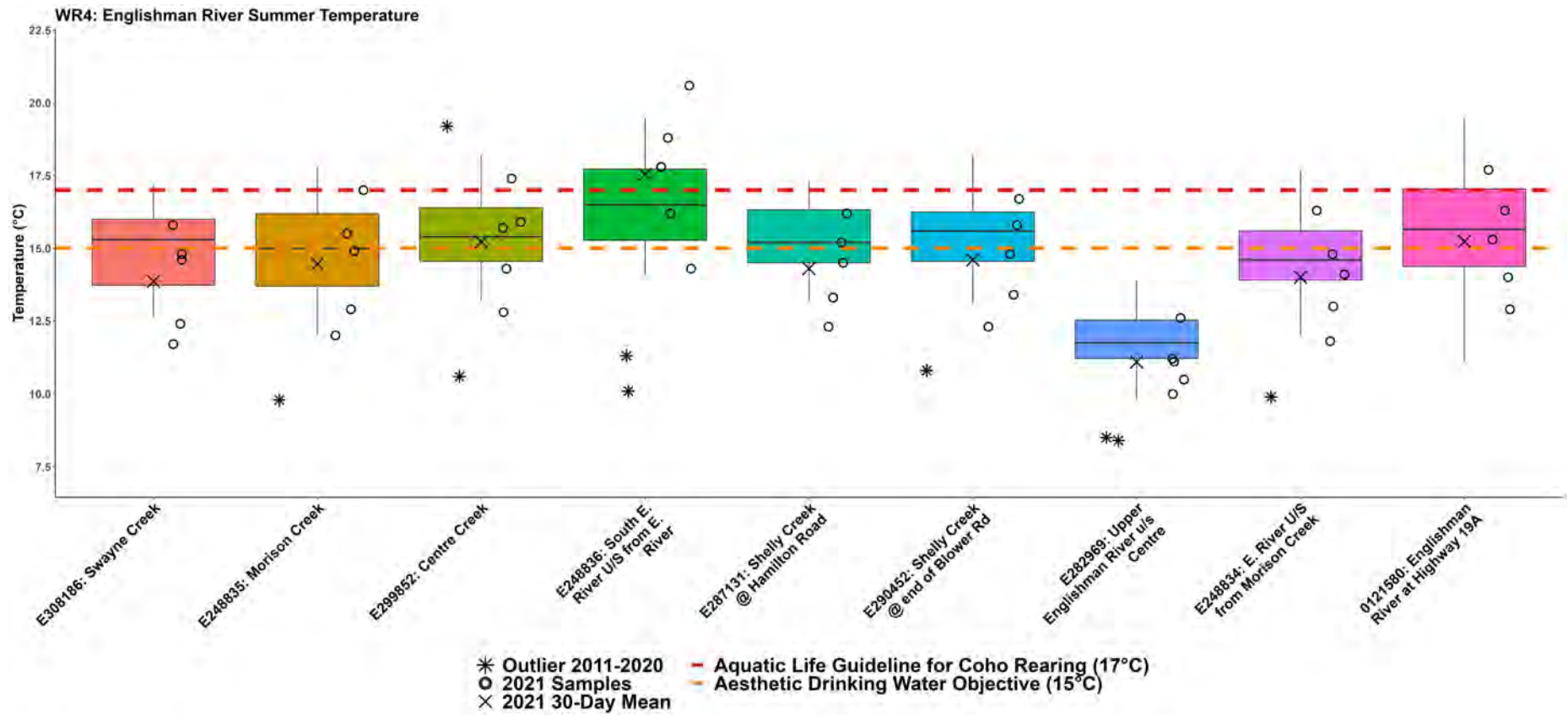
Group	EMS ID	Geographic Description	Years Sampled	Years Monitored
MVIHES	E299852	Centre Creek, just upstream of the confluence with S Englishman	8	2014 – present
MVIHES	E248836	South Englishman River u/s from Englishman River	11	2011 – present
MVIHES	E282969	Upper Englishman River u/s Centre Fork Creek	11	2011 – present
MVIHES	E248834	Englishman River u/s from Morison Creek	11	2011 – present
MVIHES	E308186	Swayne Creek d/s of Errington Road	8	2014 – present
MVIHES	E248835	Morison Creek u/s from Englishman River	11	2011 – present
MVIHES	E287131	Shelly Creek @ Hamilton Road	8	2014 – present
MVIHES	E290452	Shelly Creek at end of Blower Road	7.5	2014 – present*
MVIHES	0121580	Englishman River at Highway 19A	11	2011 – present

**Fall 2015 was not monitored to complete restoration work.*

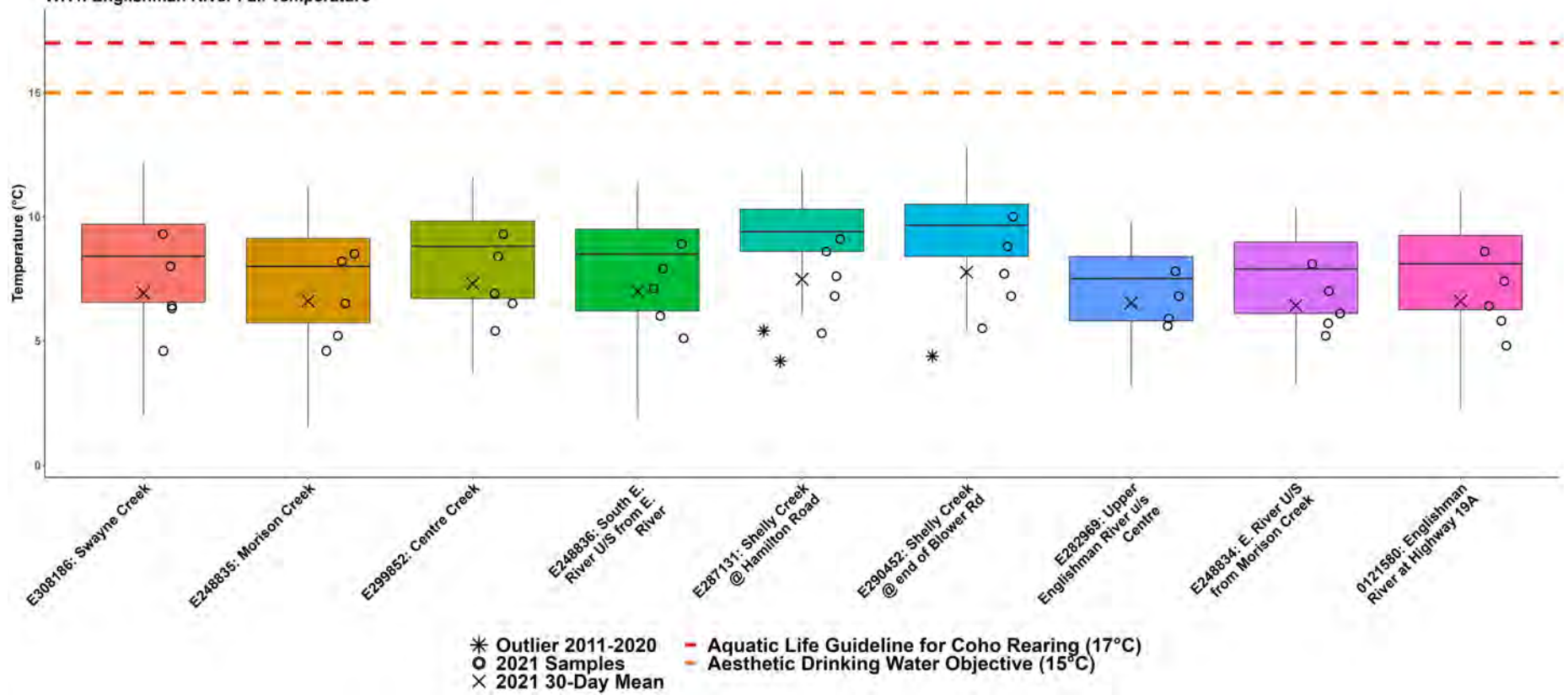


How to Interpret a Box Plot:

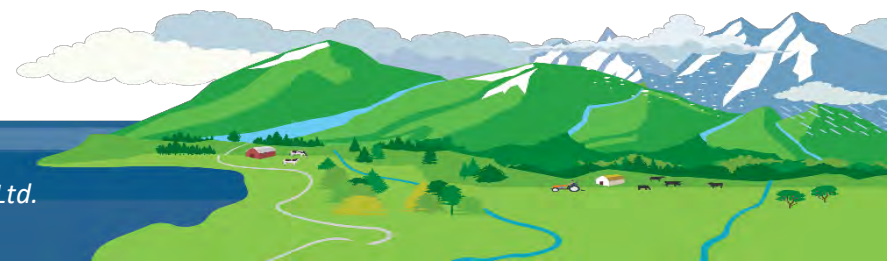
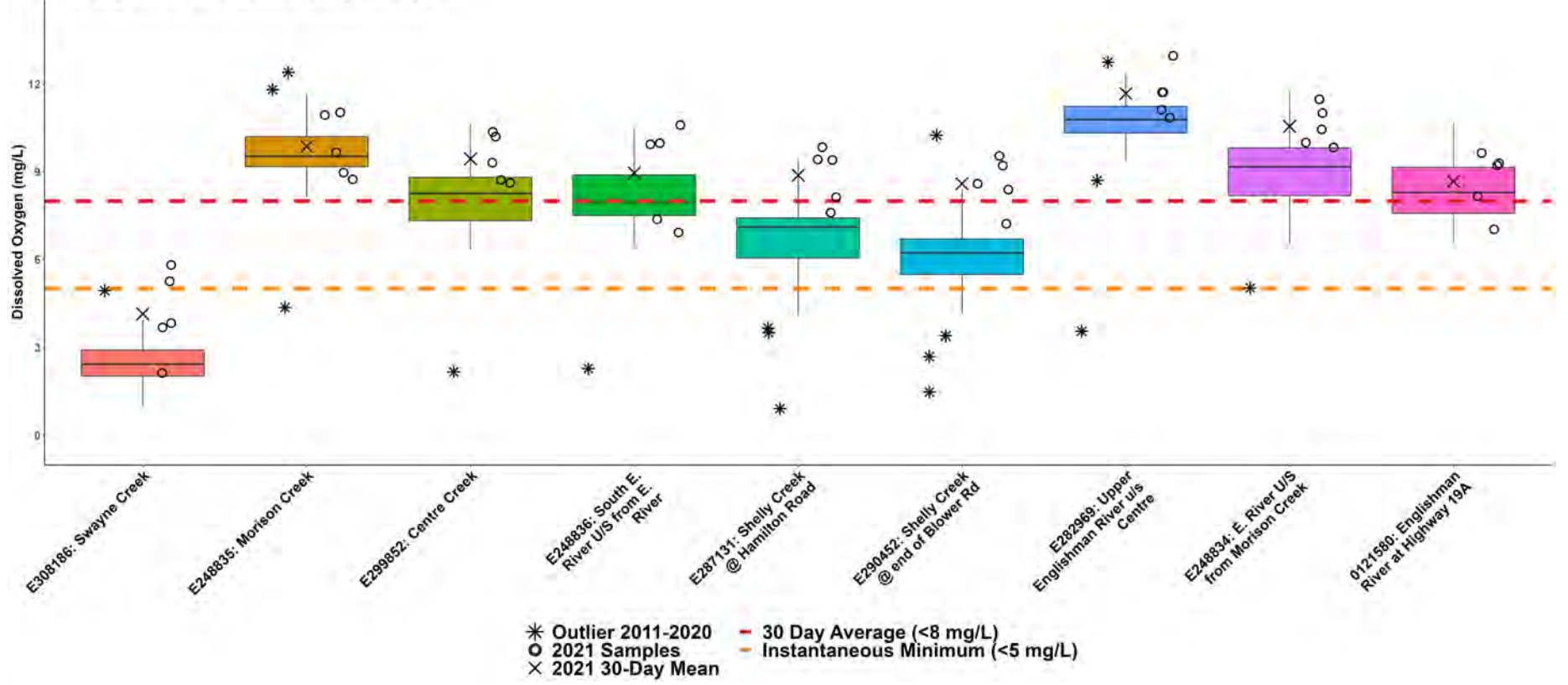




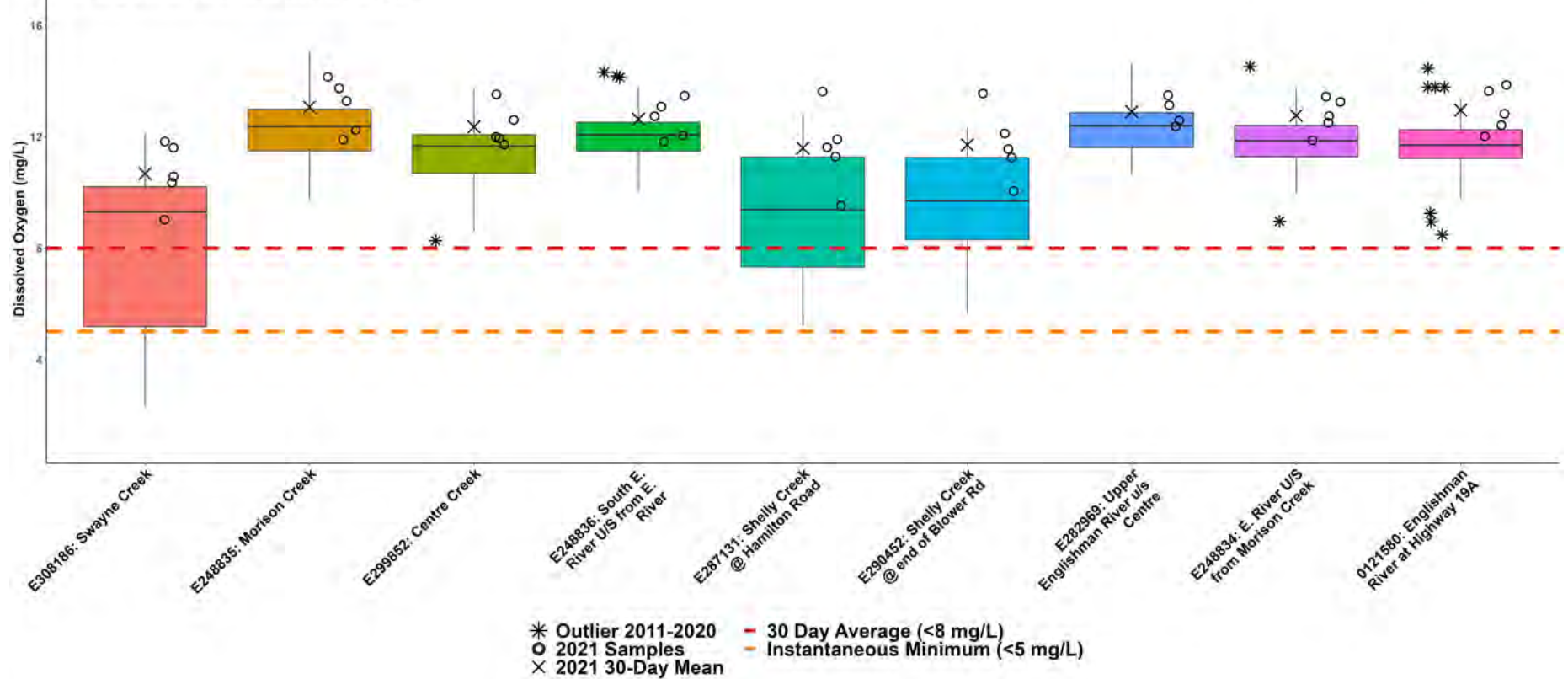
WR4: Englishman River Fall Temperature



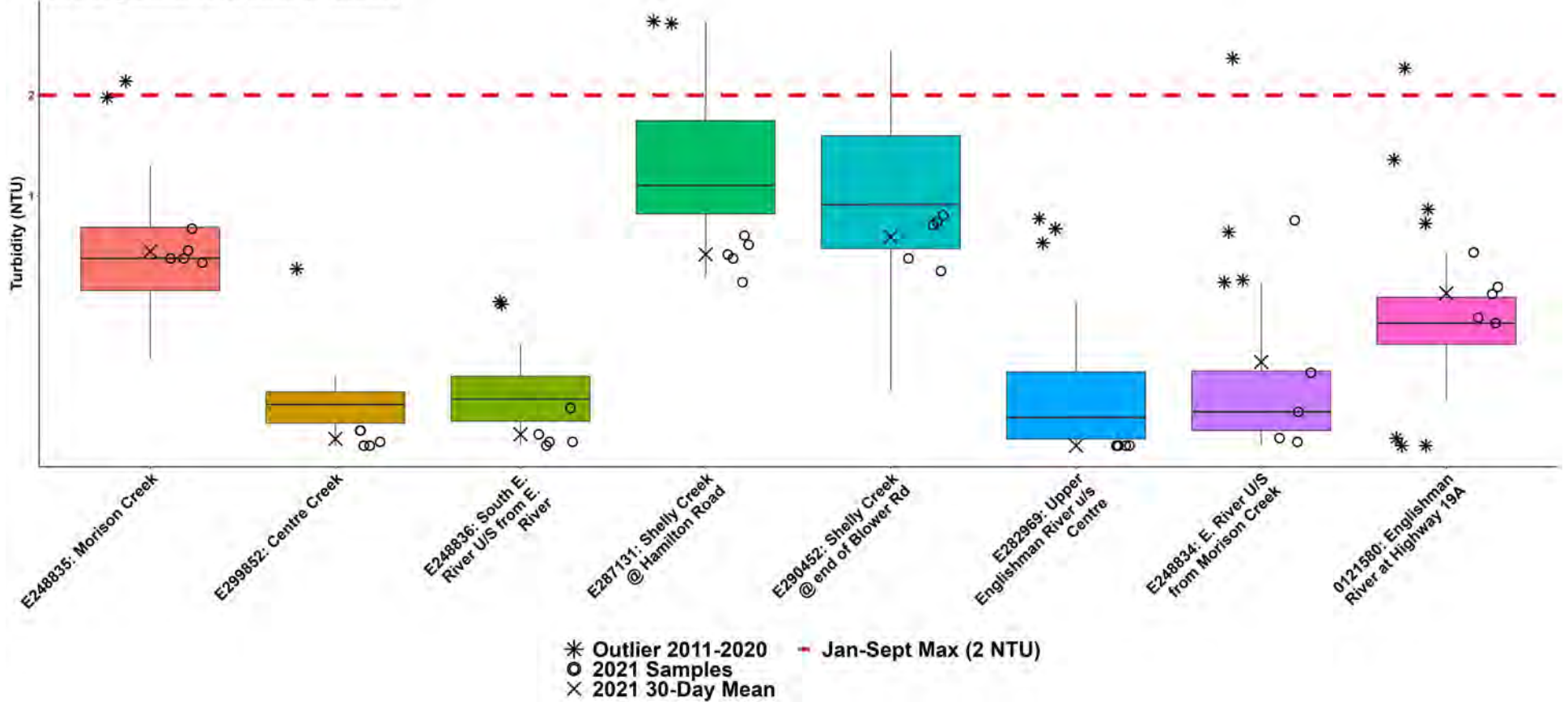
WR4: Englishman River Summer Dissolved Oxygen

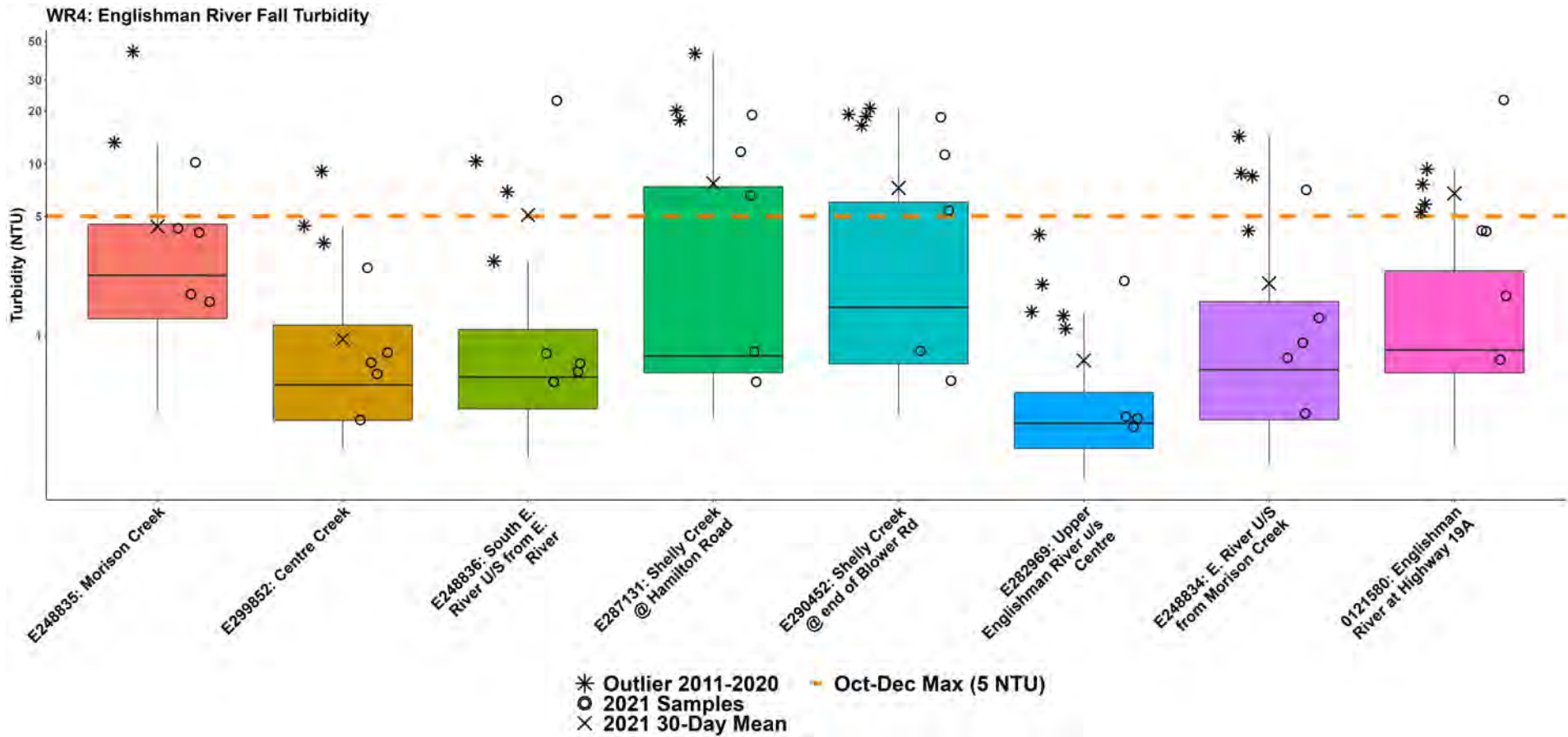


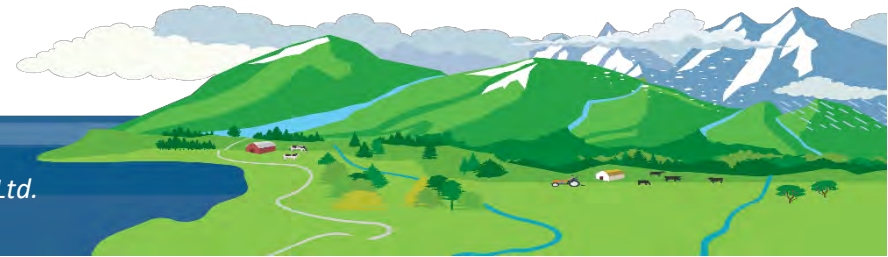
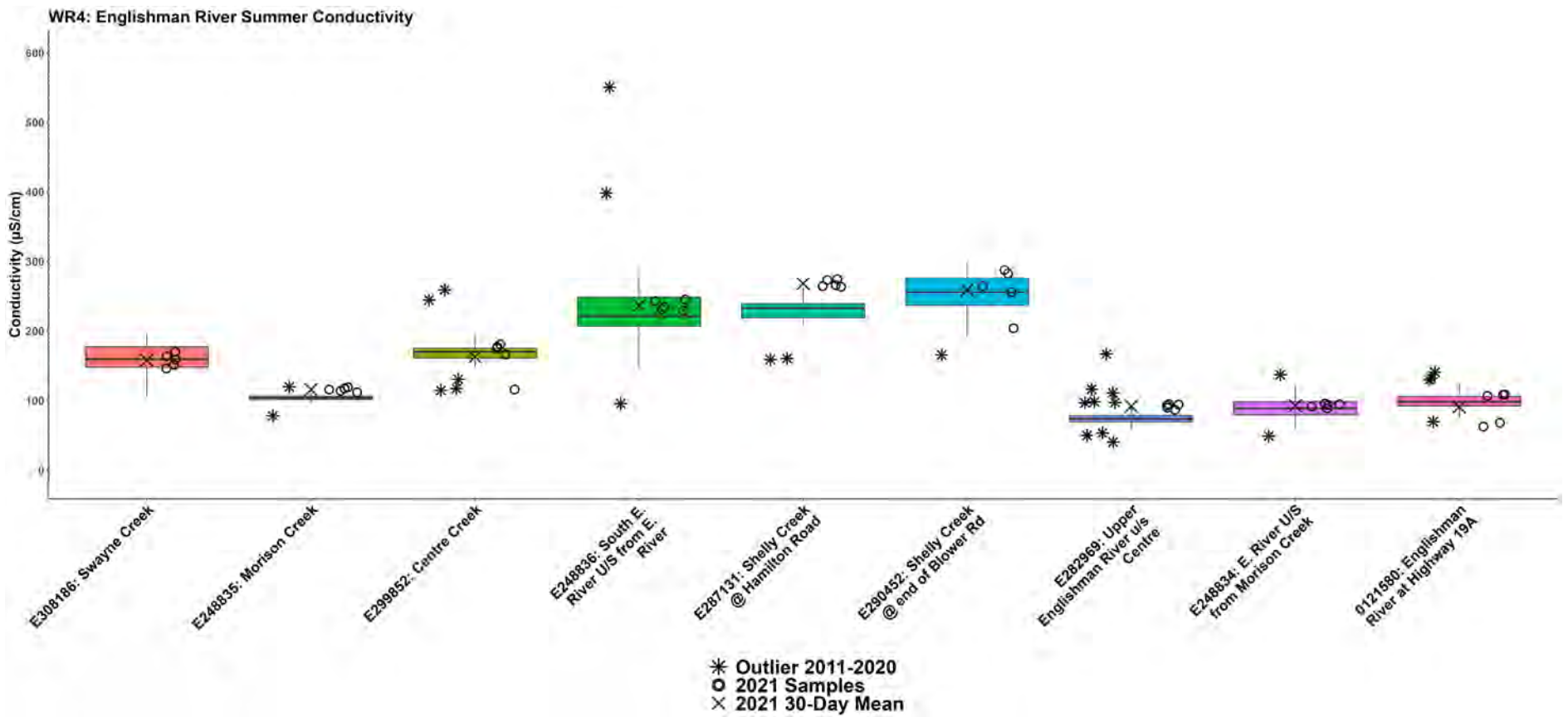
WR4: Englishman River Fall Dissolved Oxygen

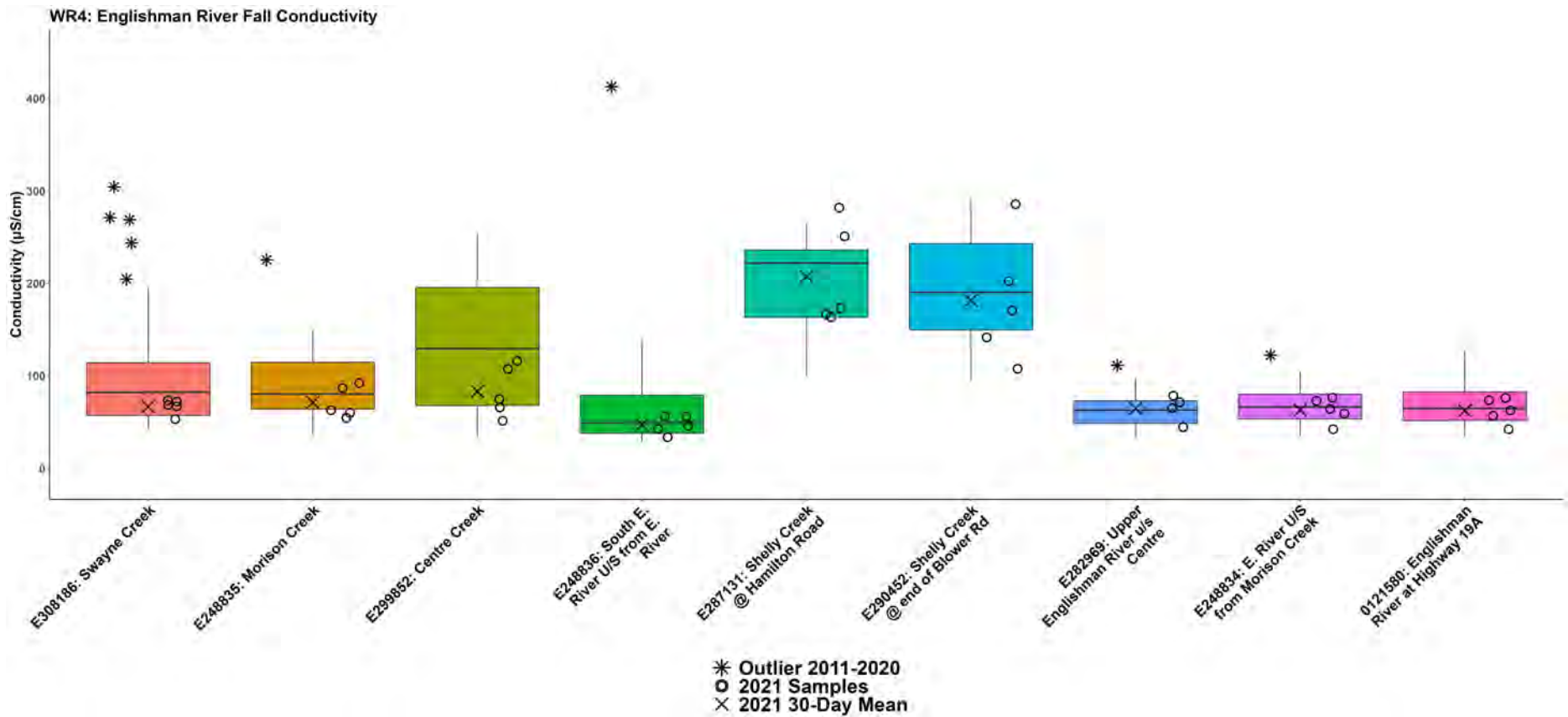


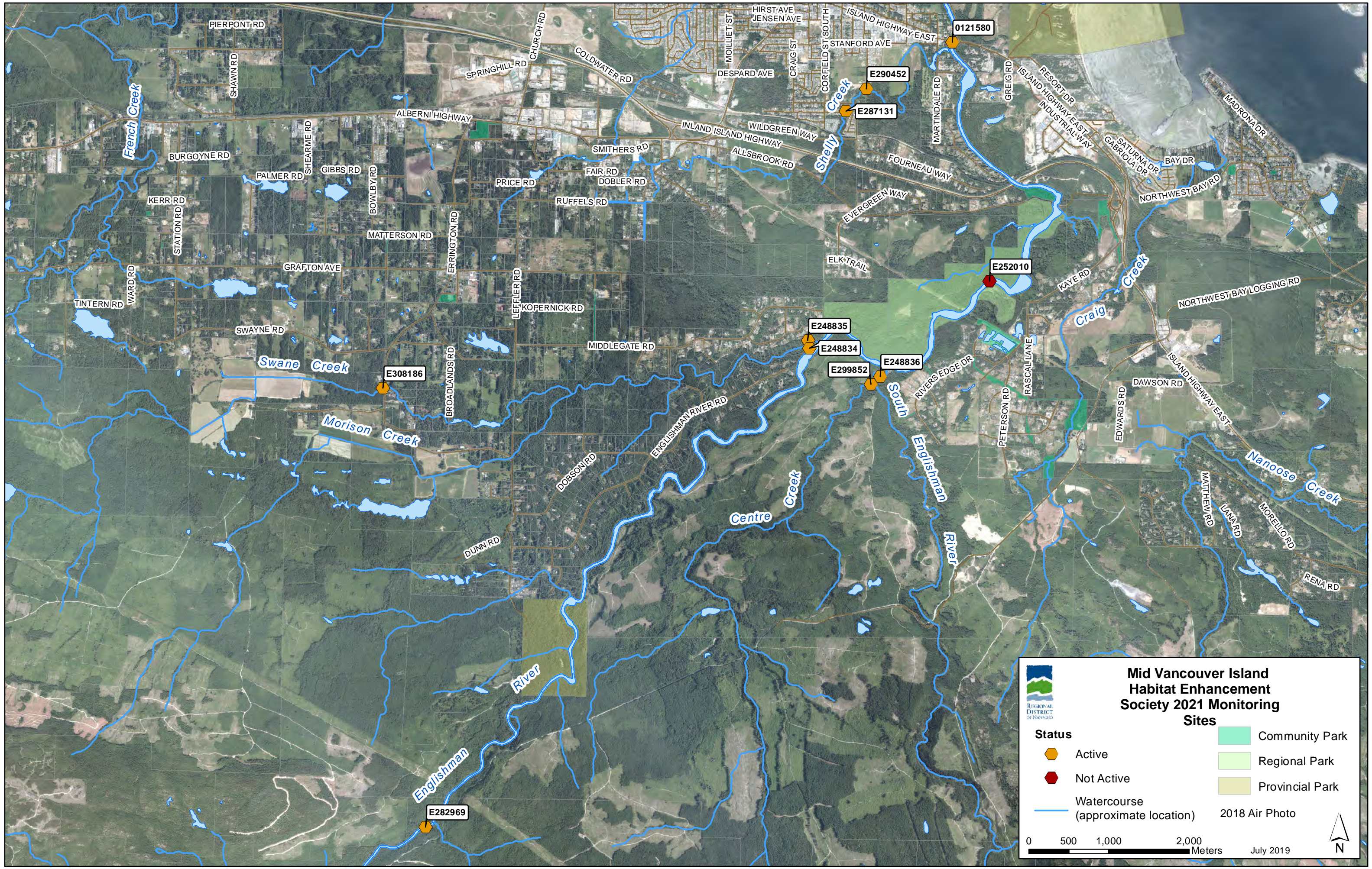
WR4: Englishman River Summer Turbidity











**Mid Vancouver Island
Habitat Enhancement
Society 2021 Monitoring
Sites**

Status

- Active
- Not Active

Sites

- Community Park
- Regional Park
- Provincial Park

Watercourse (approximate location) 2018 Air Photo

0 500 1,000 2,000 Meters

July 2019