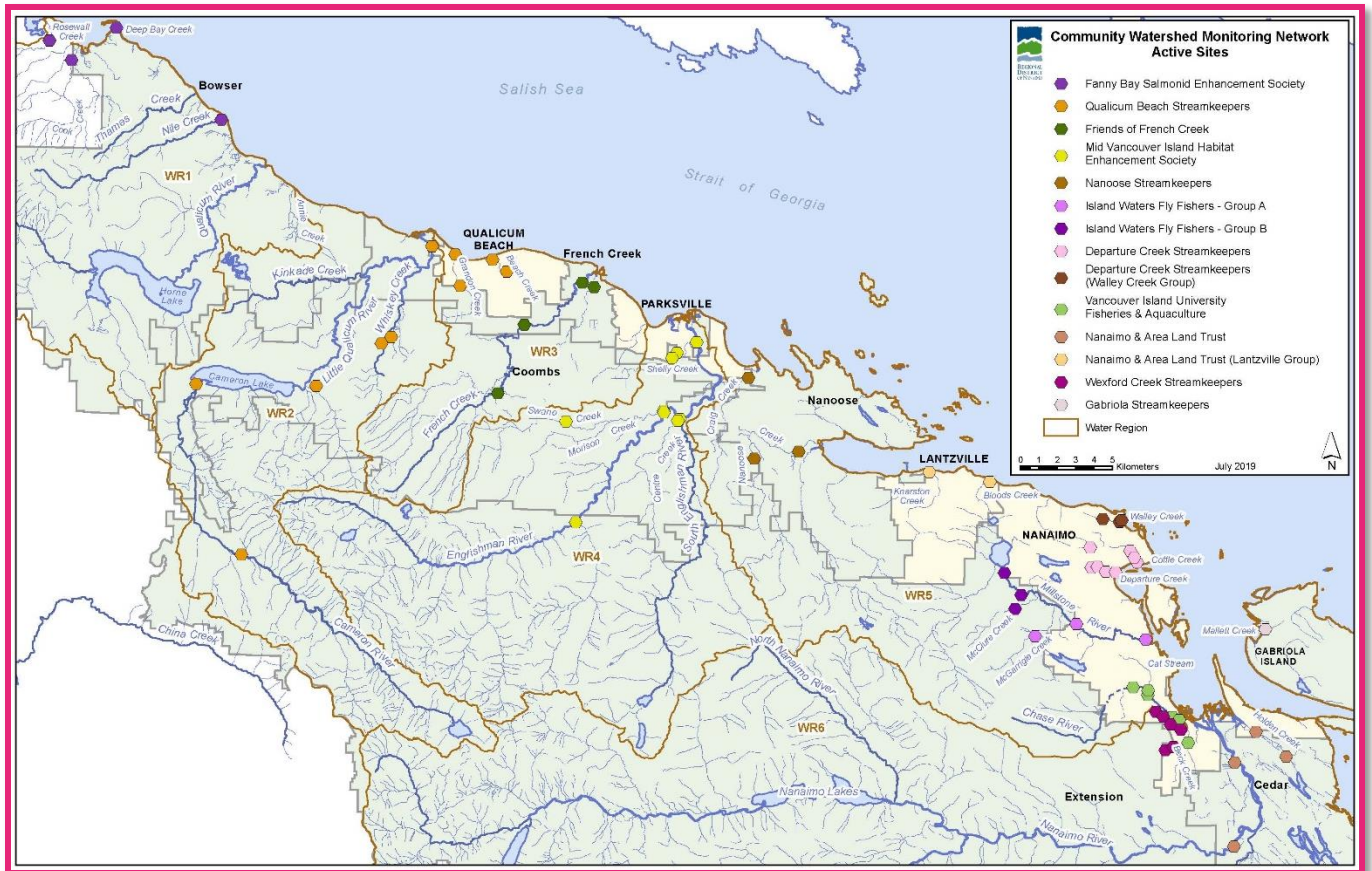


# Community Watershed Monitoring Network 2019

## Results by Water Region



Included in your Water Region package:

1. CWMN sample sites in Water Region (WR) 4
2. How to interpret a box plot
3. Box Plot Comparison 2019 data to previous years:  
*Graphs displayed per parameter (Temperature, Dissolved Oxygen, Turbidity, Conductivity) per sample period (summer and fall)*
4. MVIHES CWMN map of sample sites



Water Region 4  
sampled by:

**Mid Vancouver Island  
Habitat Enhancement Society  
(MVIHES)**



## CWMN Sample Sites in WR 4:

The table below shows the group(s) and sites monitored, as well as the number of years and which years a site was sampled. The number of years is important to keep in mind when interpreting the box plots as the plot for each site may contain a slightly different temporal range.

Group	EMS ID	Geographic Description	Years Sampled*	Years Monitored
MVIHES	E282969	Upper Englishman River u/s Centre Fork Creek	9	2011 - present
MVIHES	E308186	Swane Creek d/s of Errington Road	6	2014 - present
MVIHES	E248835	Morison Creek U/S from Englishman River	9	2011 - present
MVIHES	E248834	Englishman River U/S from Morison Creek	9	2011 - present
MVIHES	E299852	Centre Creek, just upstream of the confluence with S Englishman	6	2014 - present
MVIHES	E248836	South Englishman River u/s from Englishman River	9	2011 - present
MVIHES	E287131	Shelly Creek @ Hamilton Road	6	2014 - present
MVIHES	0121580	Englishman River at Highway 19A	9	2011 - present
MVIHES	E290452	Shelley Creek at end of Blower Rd.	5.5	2014 - present~

\*The number of years sampled up to and including 2019.

~Fall 2015 was not monitored in order to complete restoration work.



# How to Interpret a Box Plot:



**OUTLIER**  
More than 3/2 times of upper quartile

## Legend

- ..... Aquatic Life Guideline for Coho Rearing
- 2019 Samples
- Outlier 2011-2018

**MAXIMUM**  
Greatest value, excluding outliers

**UPPER QUARTILE**  
25% of data greater than this value

**MEDIAN**  
50% of data is greater than this value; middle of data set

- Interquartile range contains 50% of the values

**LOWER QUARTILE**  
25% of data less than this value

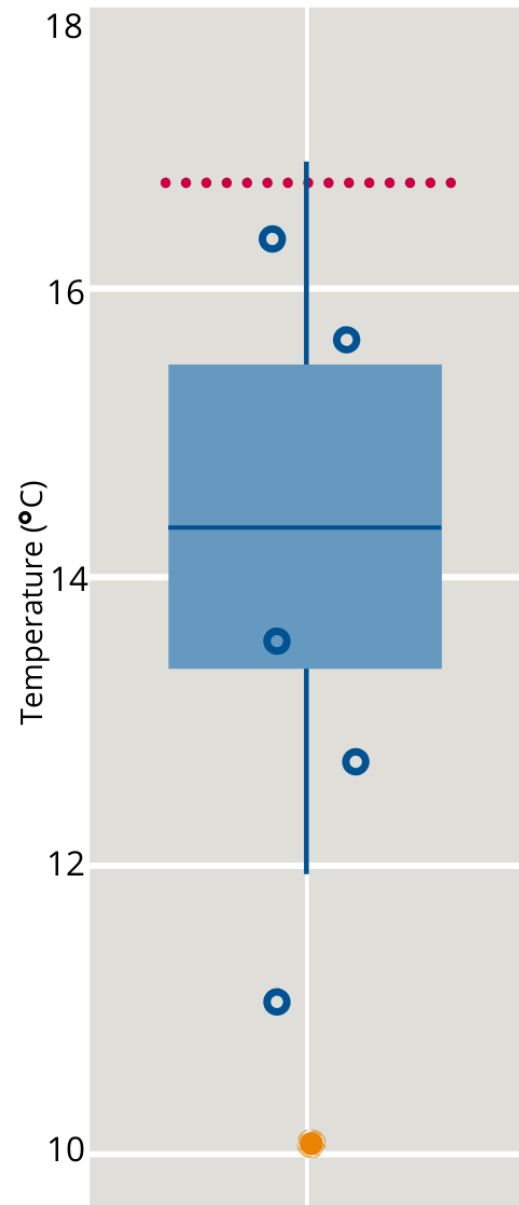
**MINIMUM**  
Least value, excluding outliers



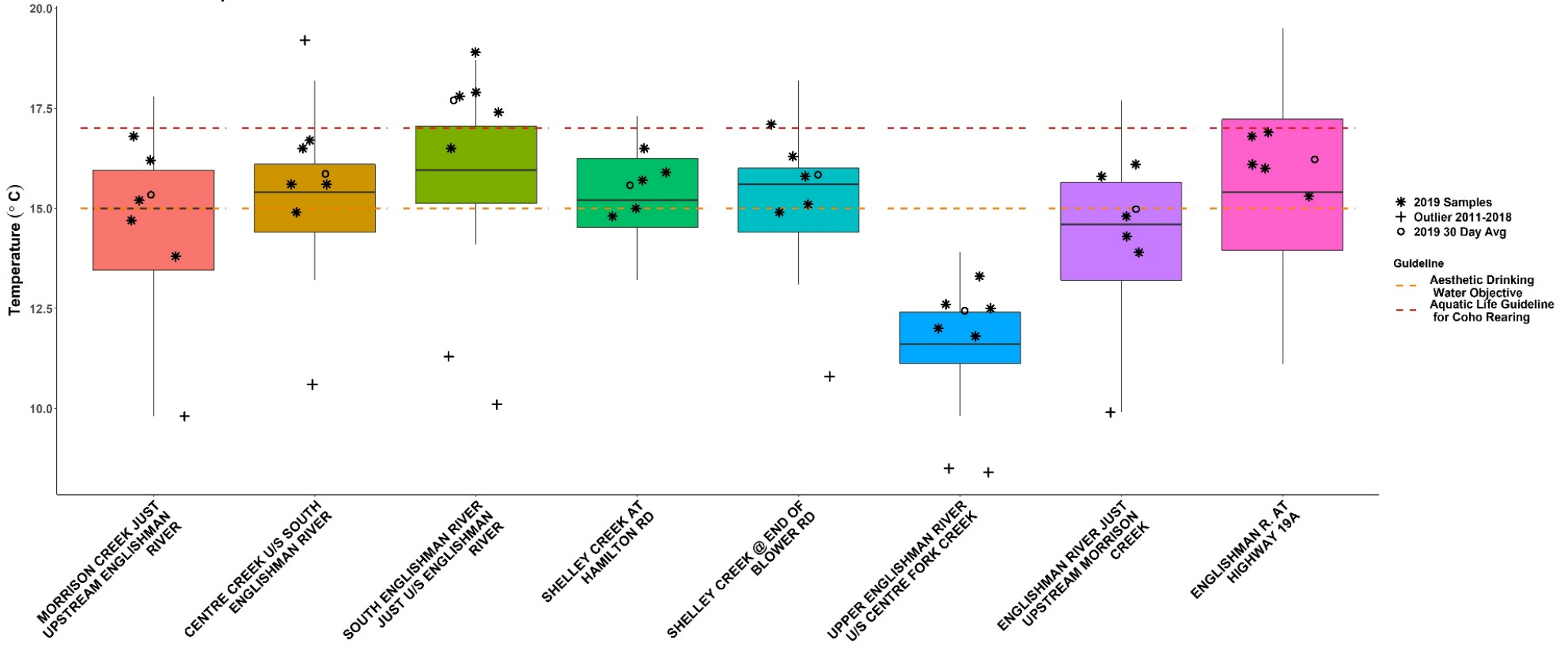
**OUTLIER**  
Less than 3/2 times of upper quartile

- Maximum & minimum values shown at the end of each whisker = the range that includes all data except outliers

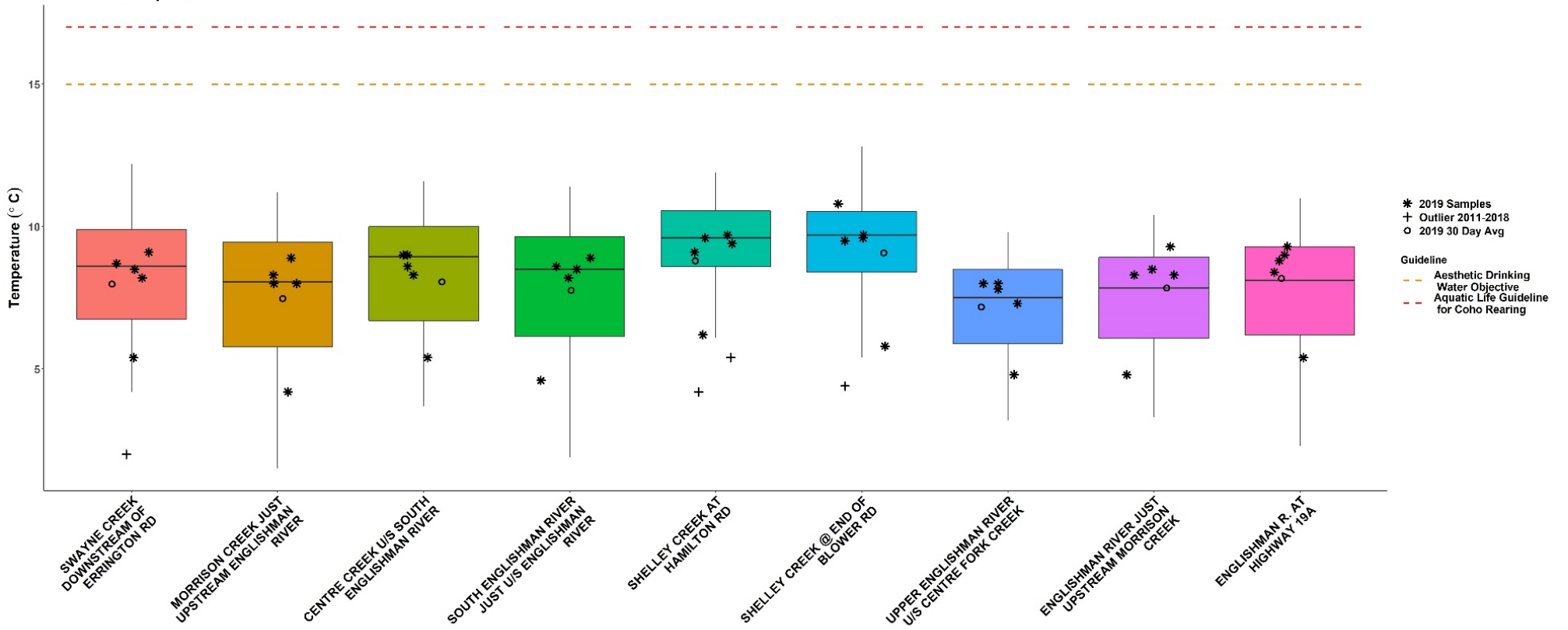
## EXAMPLE



### WR4 Summer Temperature

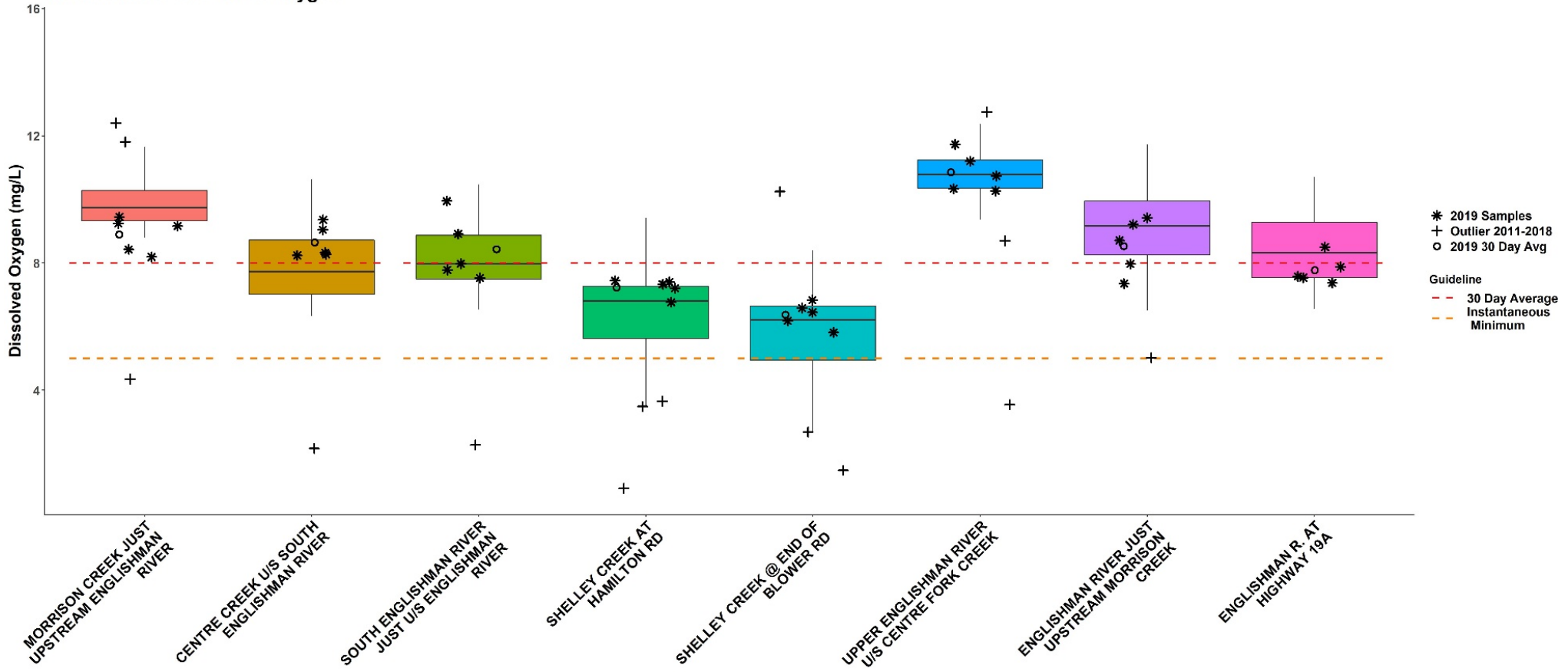


### WR4 Fall Temperature

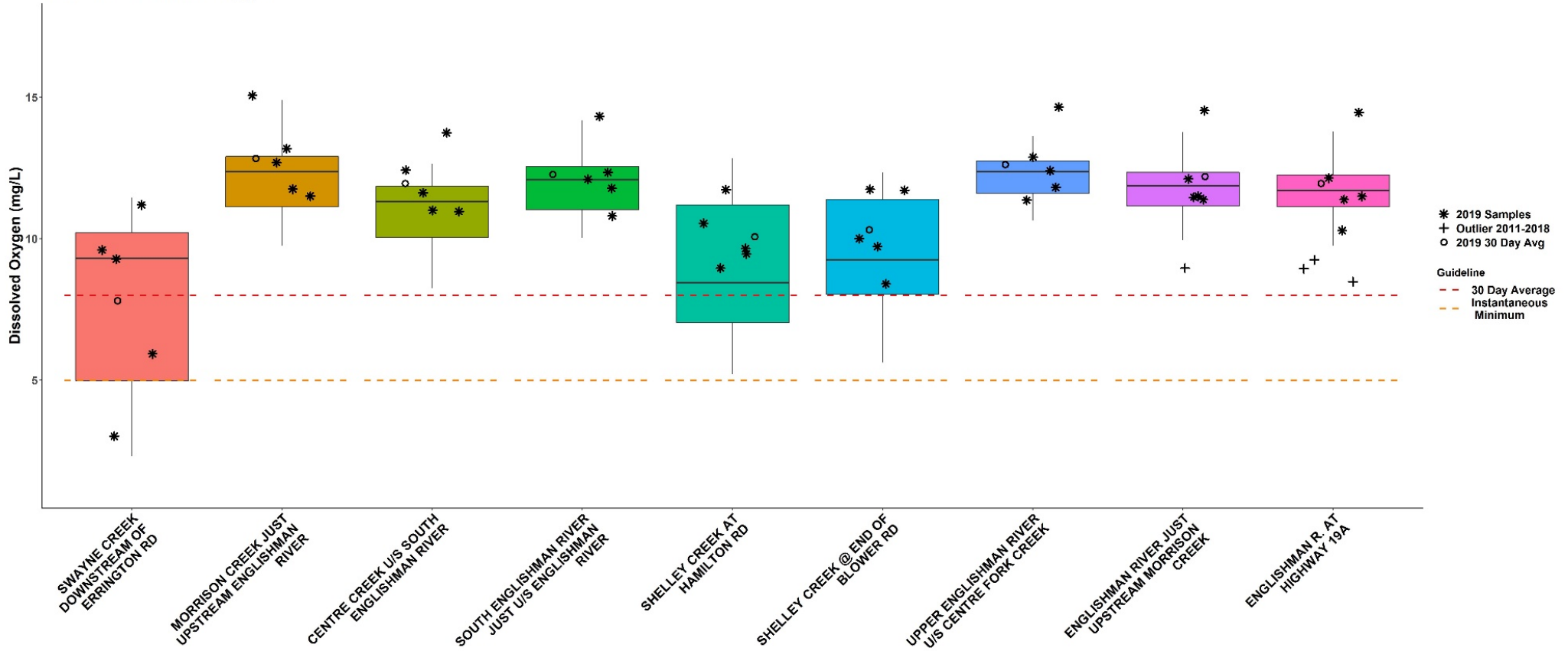




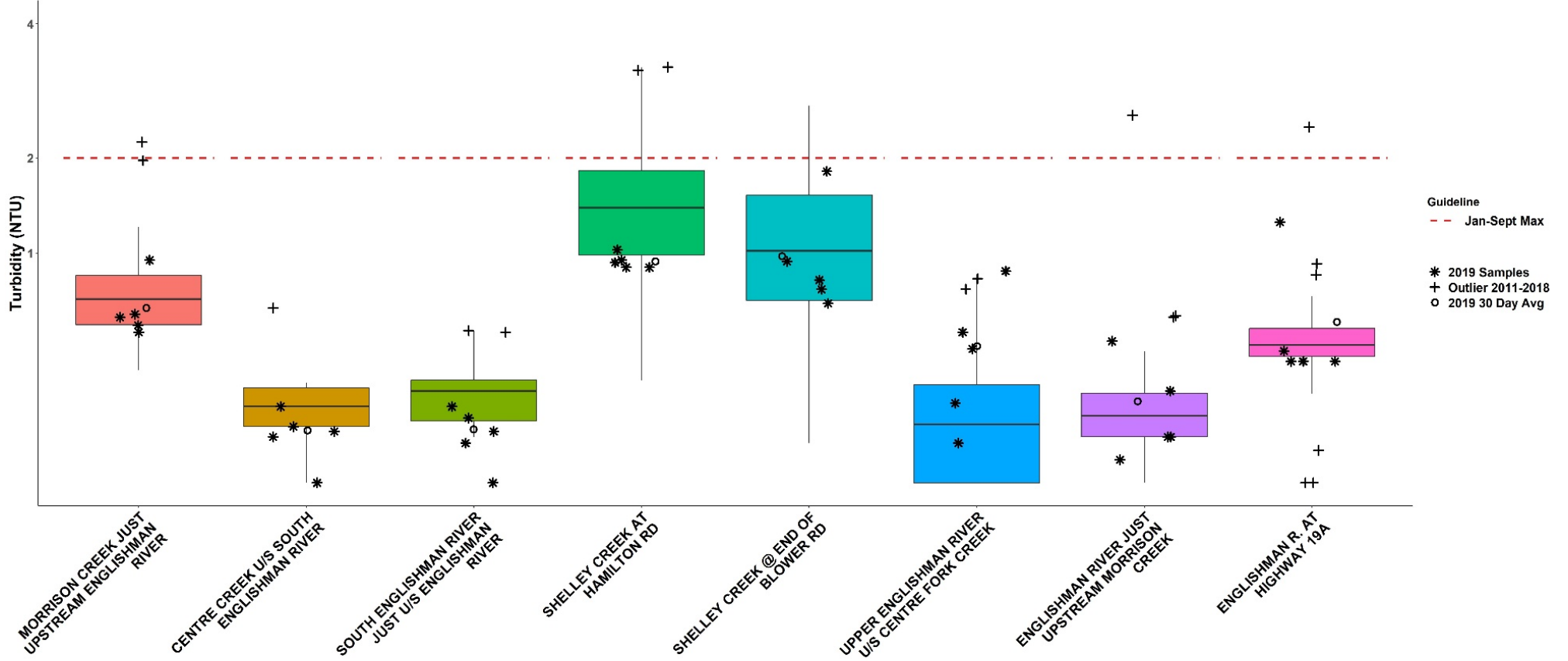
# WR4 Summer Dissolved Oxygen



## WR4 Fall Dissolved Oxygen

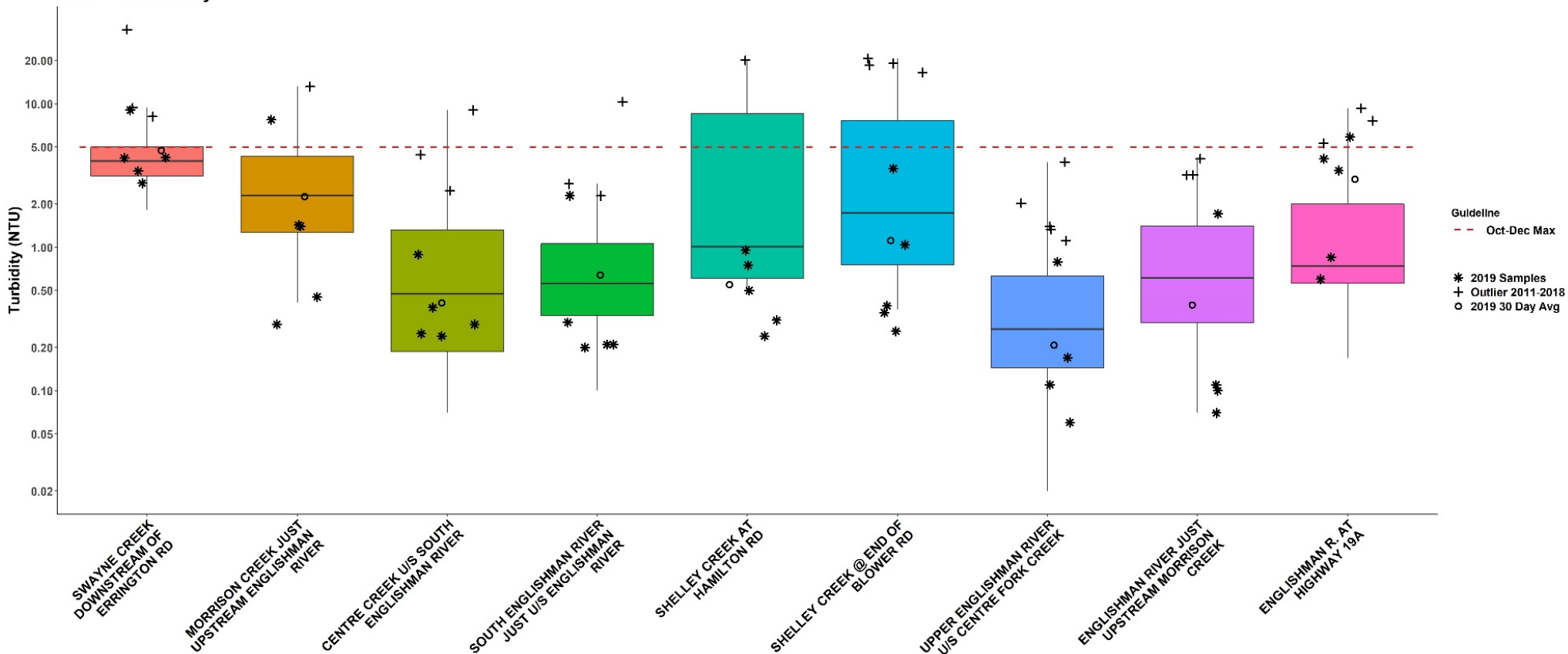


# WR4 Summer Turbidity

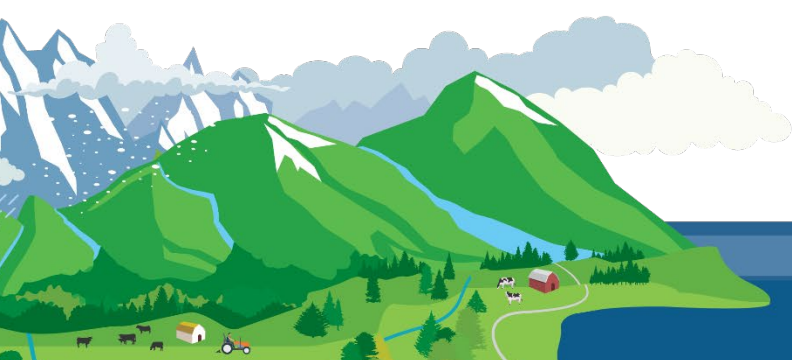
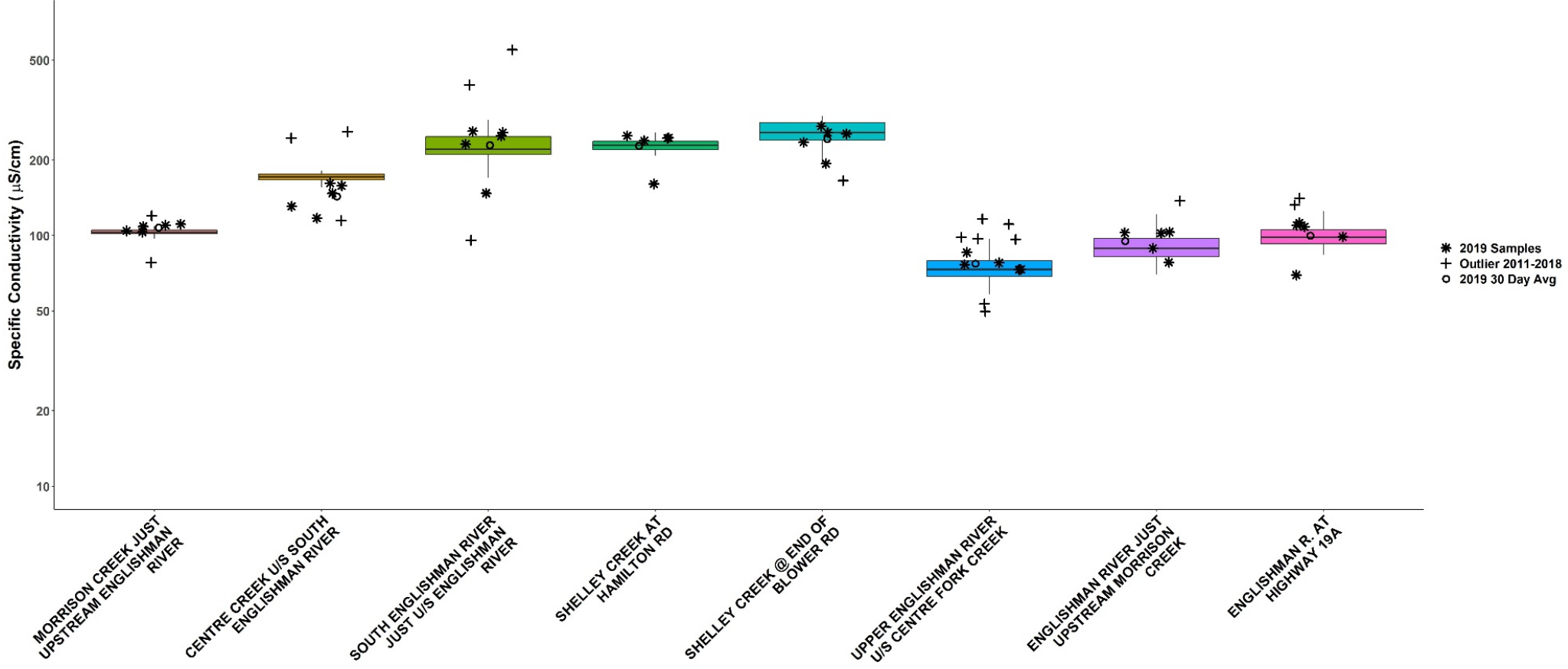


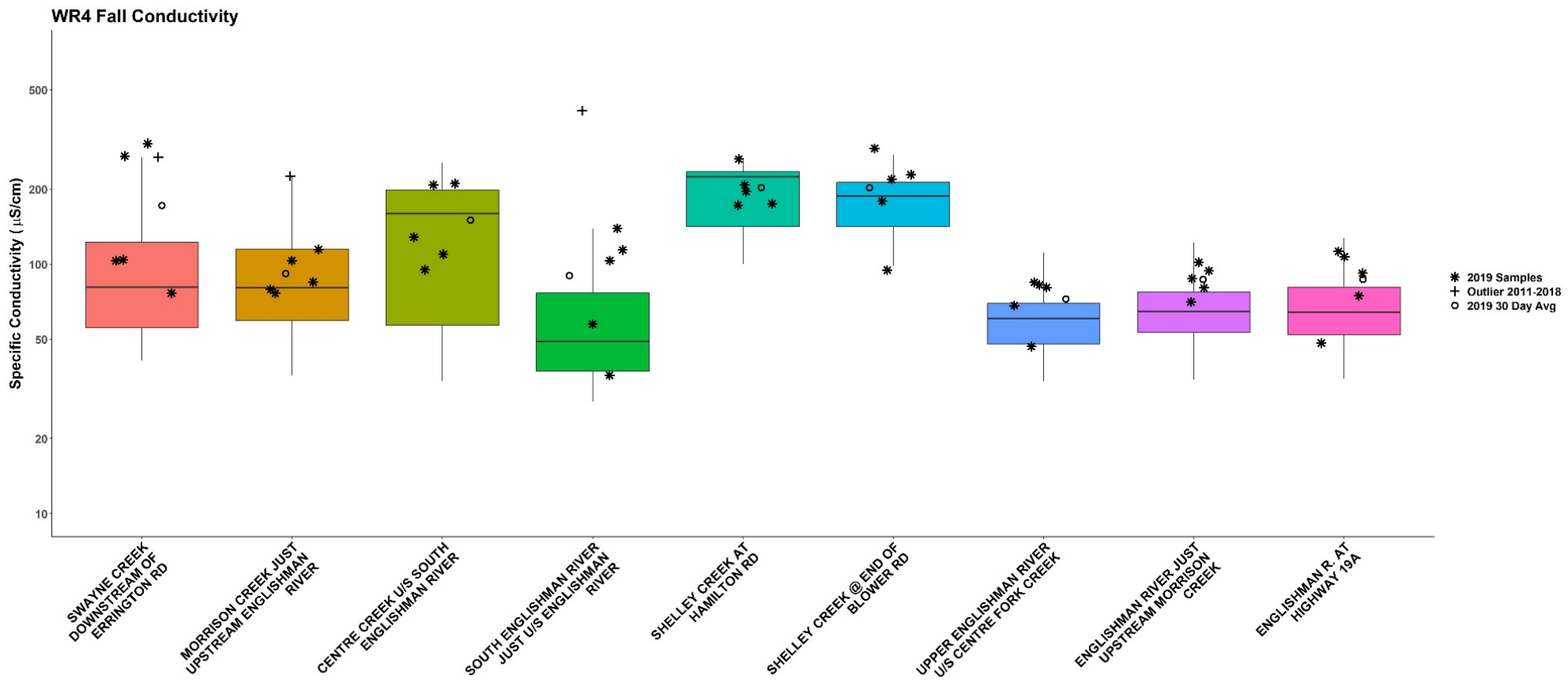


### WR4 Fall Turbidity

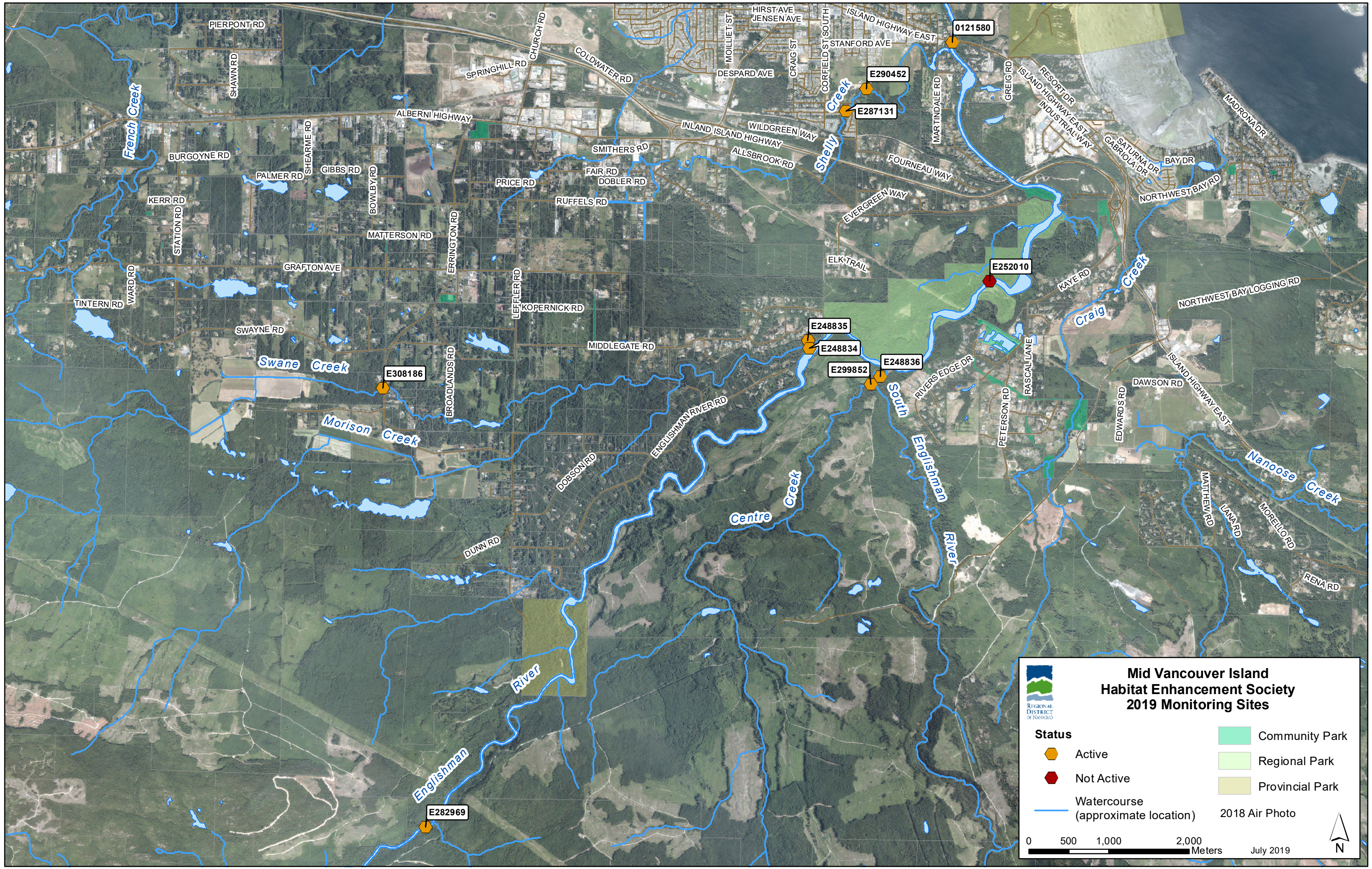


### WR4 Summer Conductivity









**Mid Vancouver Island  
Habitat Enhancement Society  
2019 Monitoring Sites**

REGIONAL DISTRICT OF NANAIKO

<b>Status</b>	Active	Community Park
	Not Active	Regional Park
	Watercourse (approximate location)	Provincial Park
		2018 Air Photo

0 500 1,000 2,000 Meters

July 2019

N