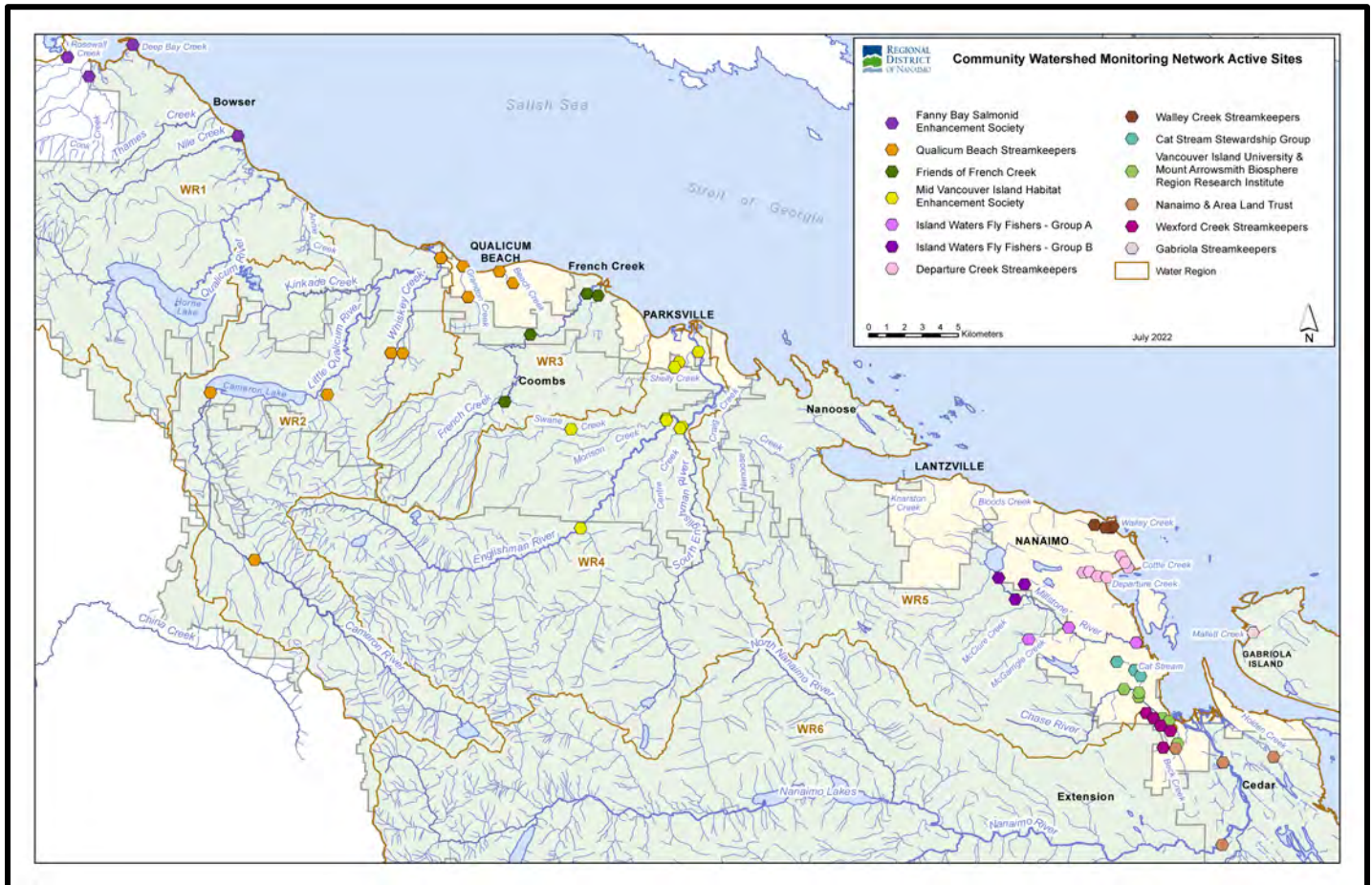


Community Watershed Monitoring Network 2021 Results by Water Region



Included in Water Region (WR) 1 package:

1. CWMN WR1 sample sites
2. How to interpret a box plot
3. Box Plot Comparison – 2021 data to previous years: *displayed by parameter (Temperature, Dissolved Oxygen, Turbidity, Conductivity) & sample period (summer, fall)*
4. FBSES CWMN map of sample sites
5. NCES CWMN map of sample sites



Water Region 1
sampled by:
**Fanny Bay Salmonid
Enhancement Society (FBSES)**
&
**Nile Creek Enhancement Society
(NCES)**

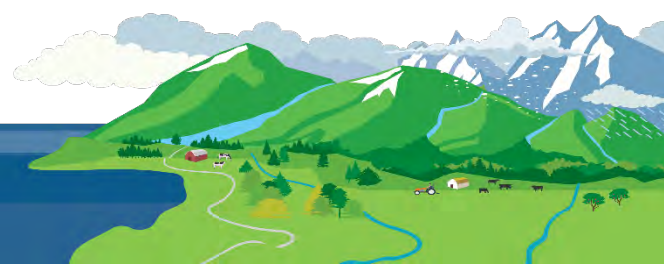


WR1 CWMN Sample Sites:

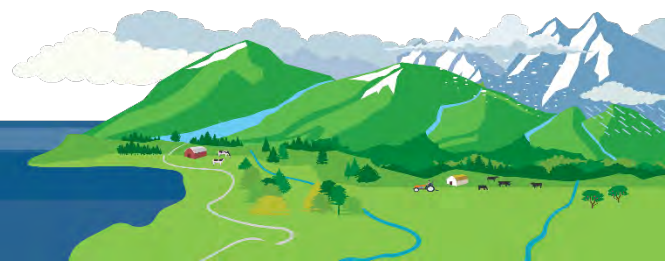
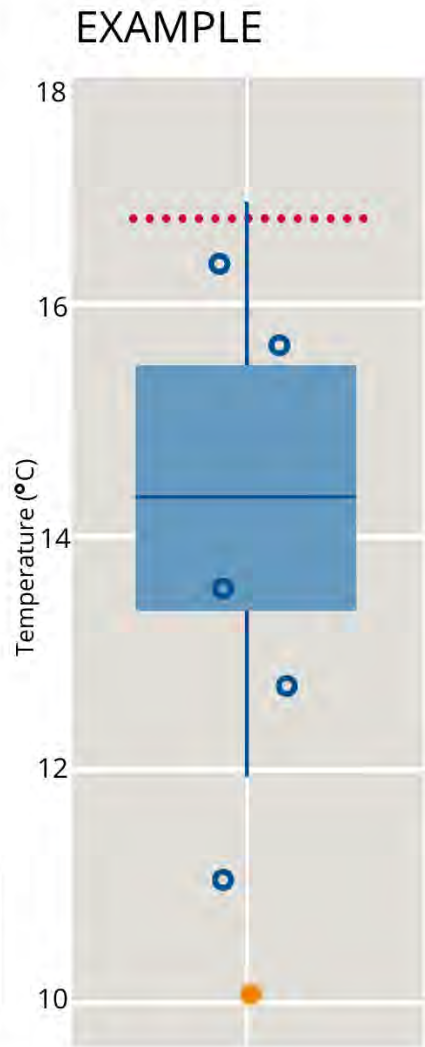
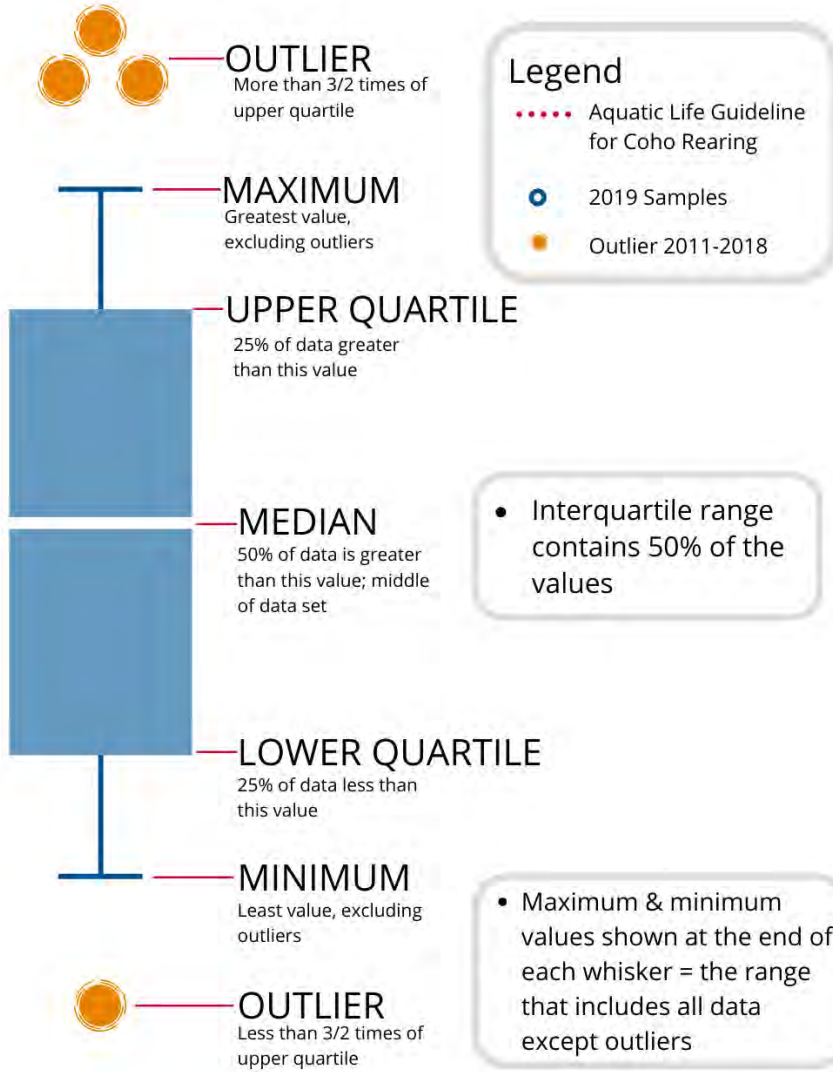
The table below shows the sites monitored by each of the streamkeeper organizations, as well as the number of years and which years a site was sampled. The number of years is important to keep in mind when interpreting the box plots as the plot for each site may contain a slightly different temporal range.

Group	EMS ID	Geographic Description	Years Sampled	Years Monitored
FBSES	E306374	Rosewall Creek @ Rosewall Creek Park	6	2016 – present
FBSES	E309086	Cook Creek at Old Island Hwy Connector	5	2017 – present
FBSES	E306375	Deep Bay Creek	6	2016 – present
NCES	E240141	Annie Creek	7	2014 – present~
NCES	E298597	Big Qualicum just u/s Hwy 19 bridge	7	2014 – present~
NCES	E298598	Big Qualicum River ~700m d/s hatchery	7	2014 – present~
NCES	E286553	Nile Creek @ Rosepark Rd (50m u/s Old Island Hwy)	10	2011 – present^
NCES	E286549	Thames Creek 200m u/s Old Island Hwy	8	2011 – present*~

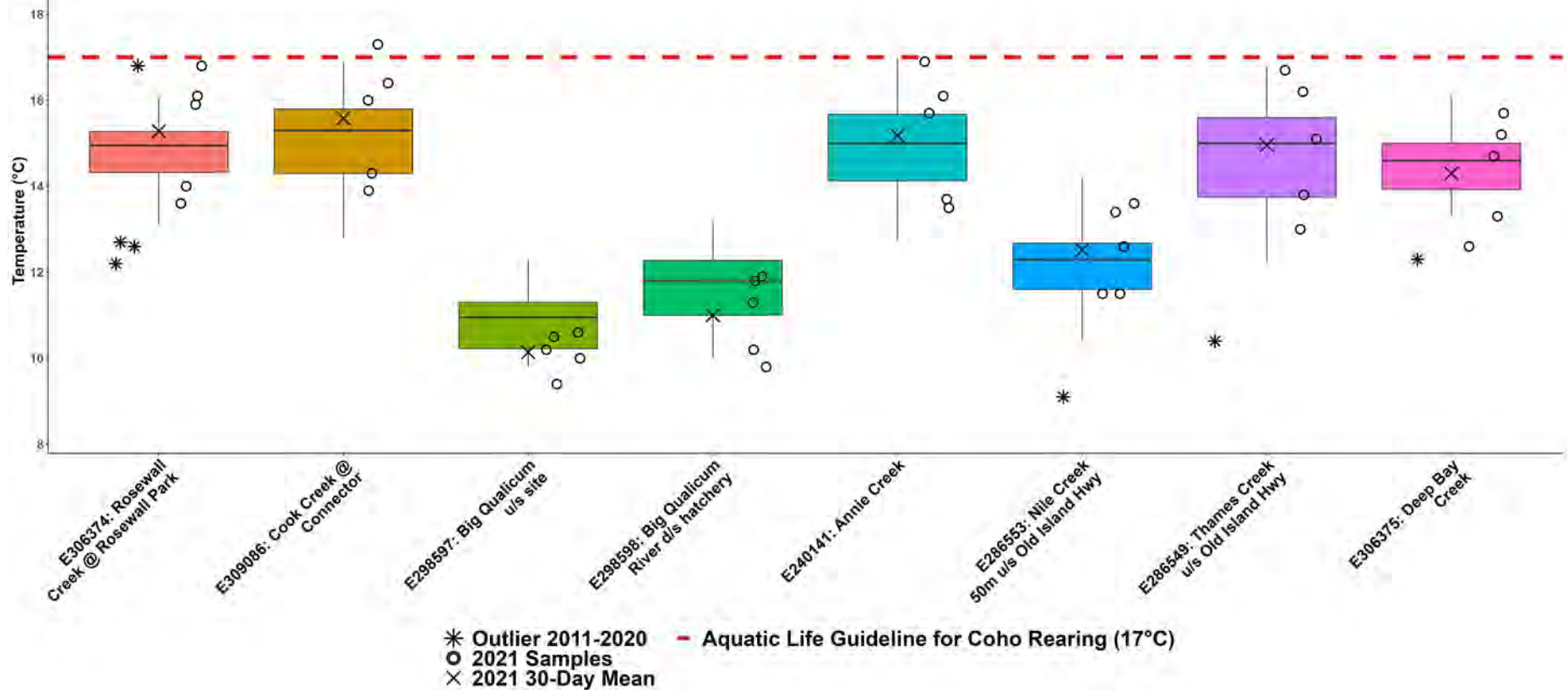
WR1 notes for the number of years sampled: *2014 & 2015 not sampled; ^2016 not sampled; ~2019 not sampled.



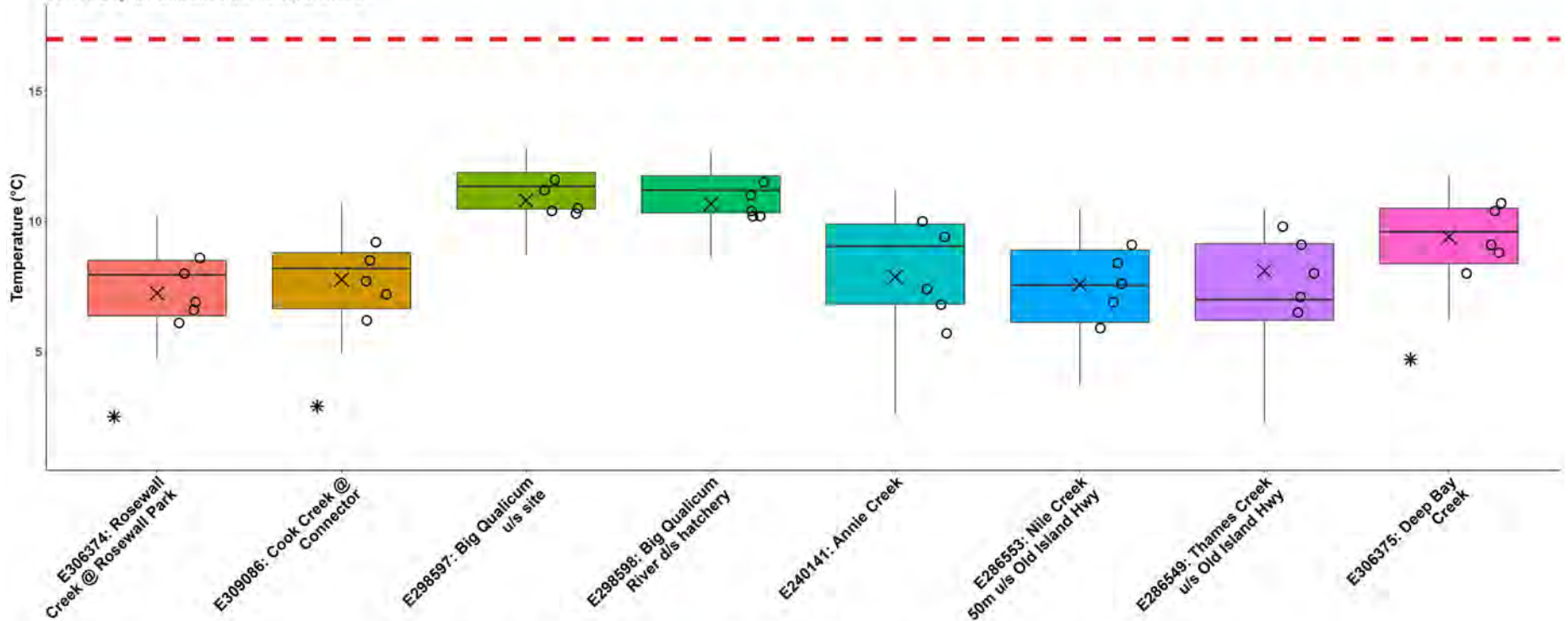
How to Interpret a Box Plot:



WR1: Big Qualicum Summer Temperature

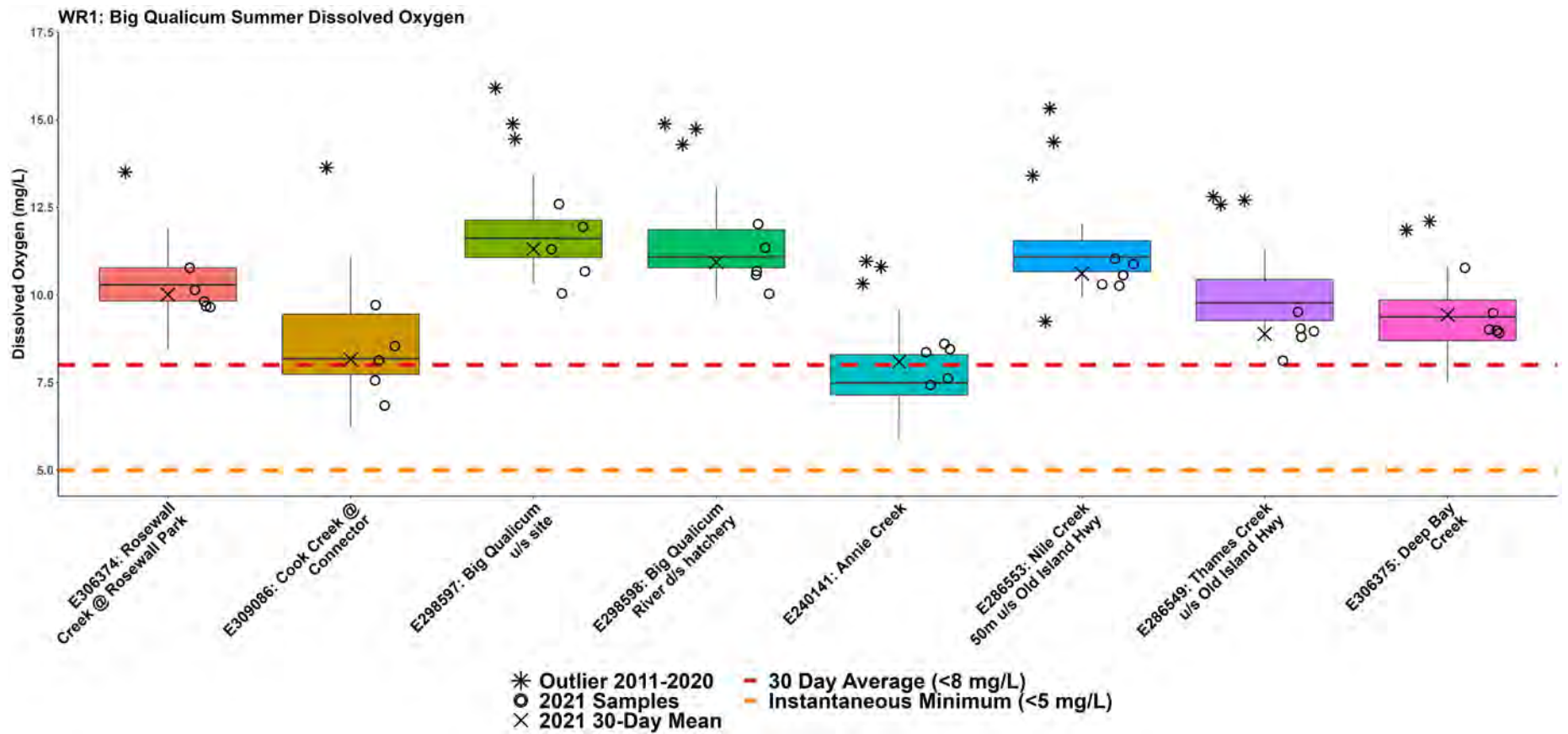


WR1: Big Qualicum Fall Temperature

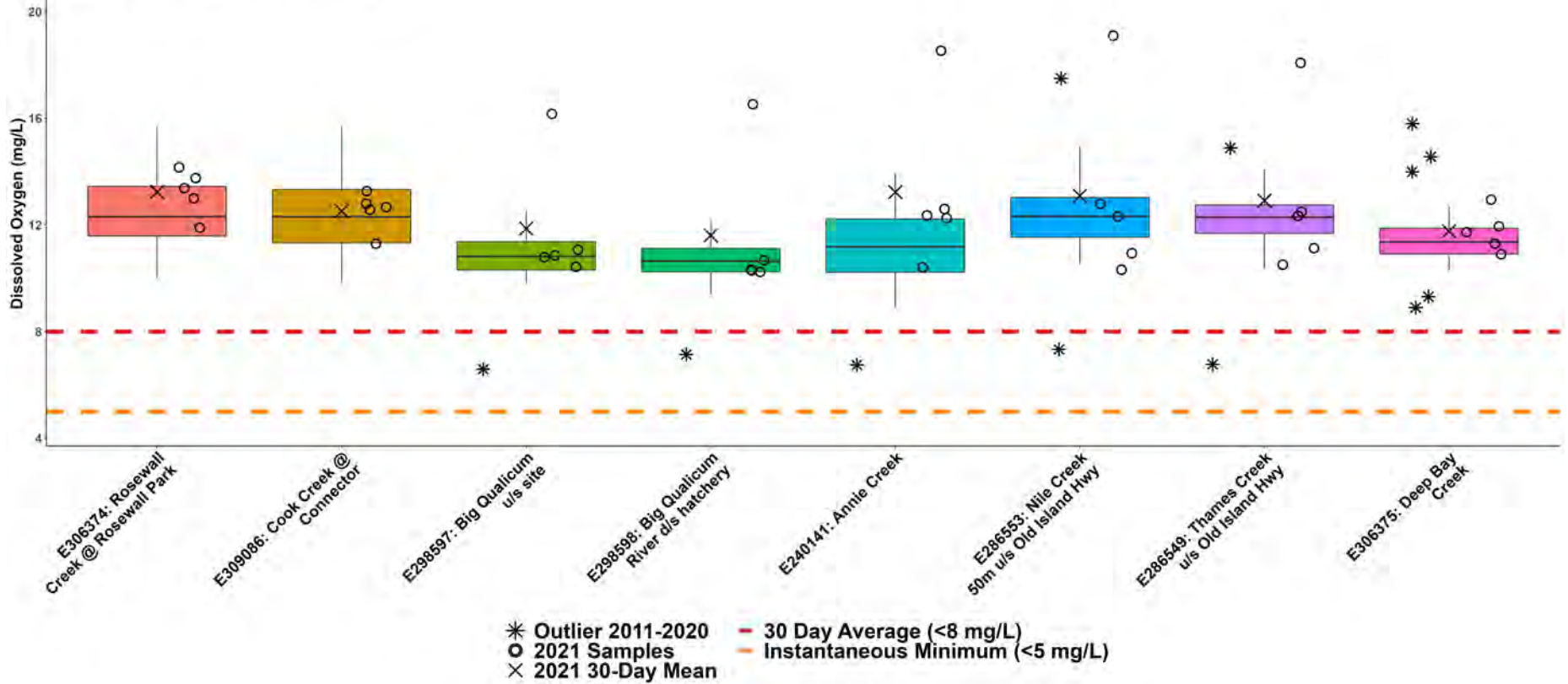


* Outlier 2011-2020 - Aquatic Life Guideline for Coho Rearing (17°C)
 ○ 2021 Samples
 × 2021 30-Day Mean

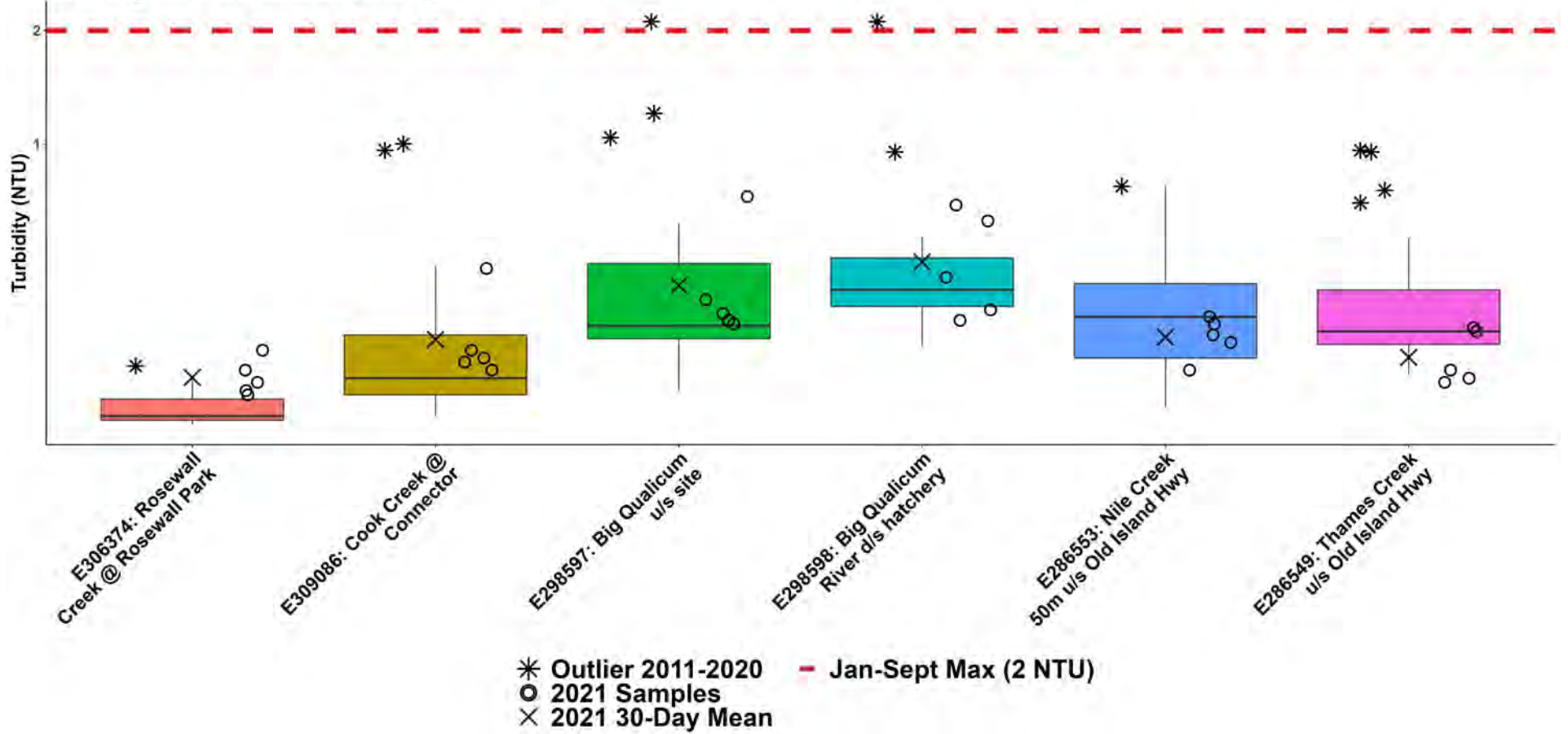




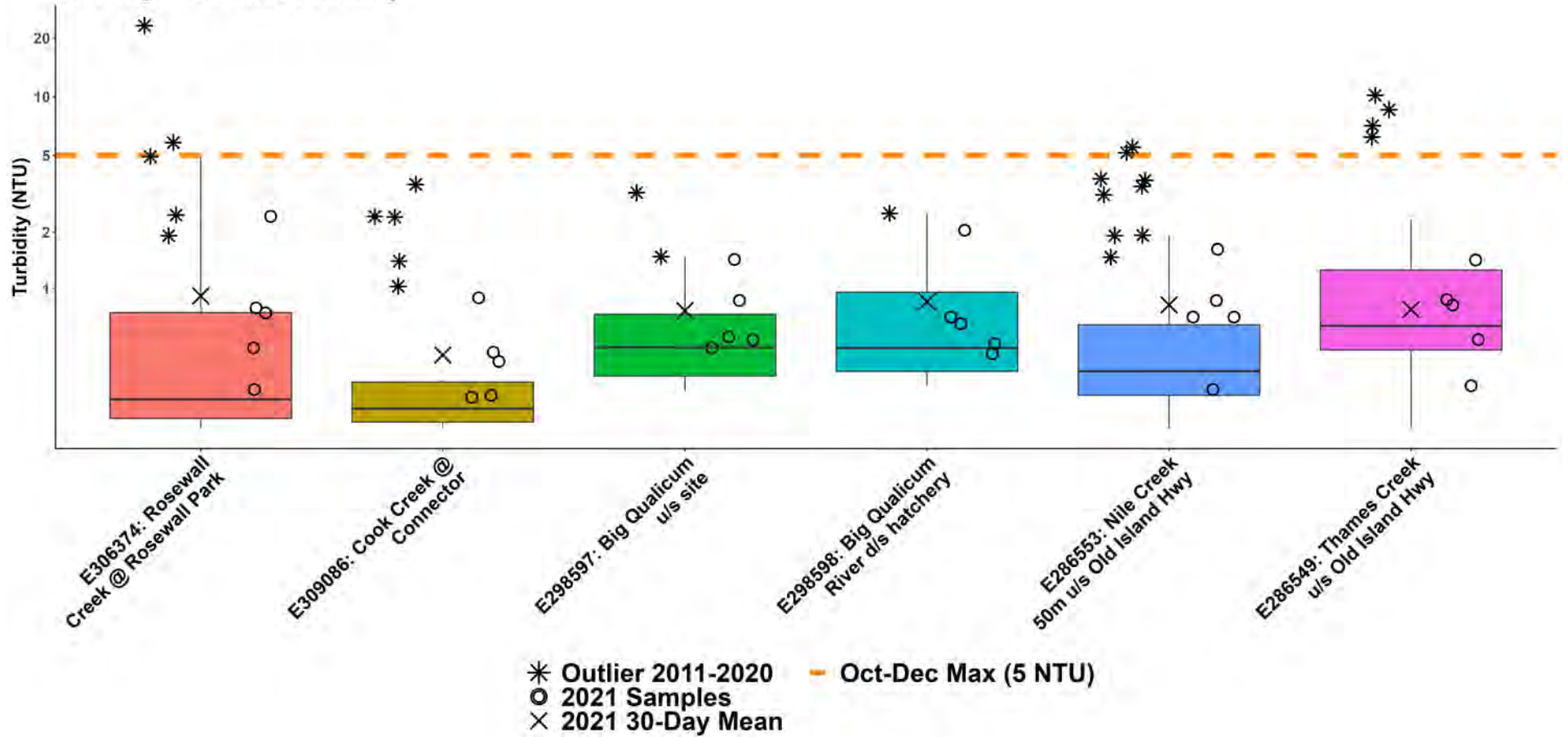
WR1: Big Qualicum Fall Dissolved Oxygen



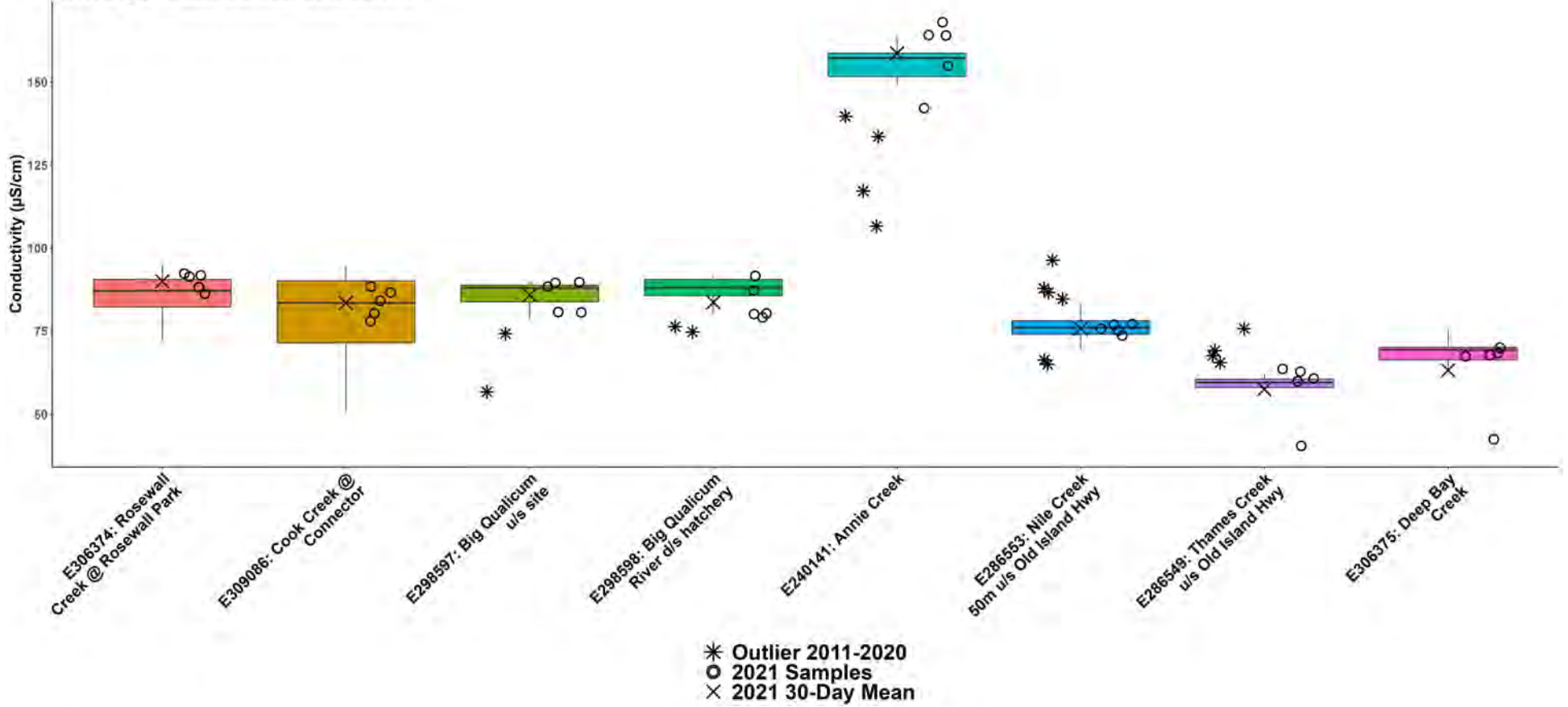
WR1: Big Qualicum Summer Turbidity



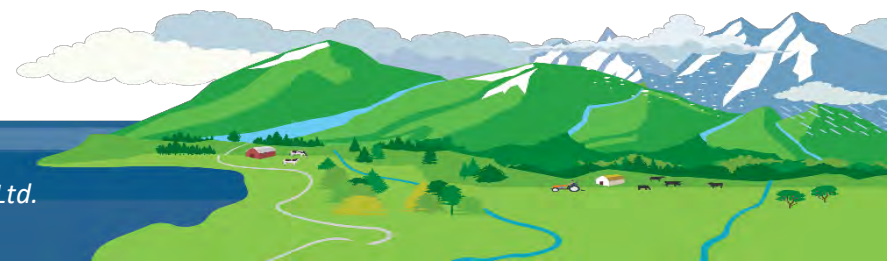
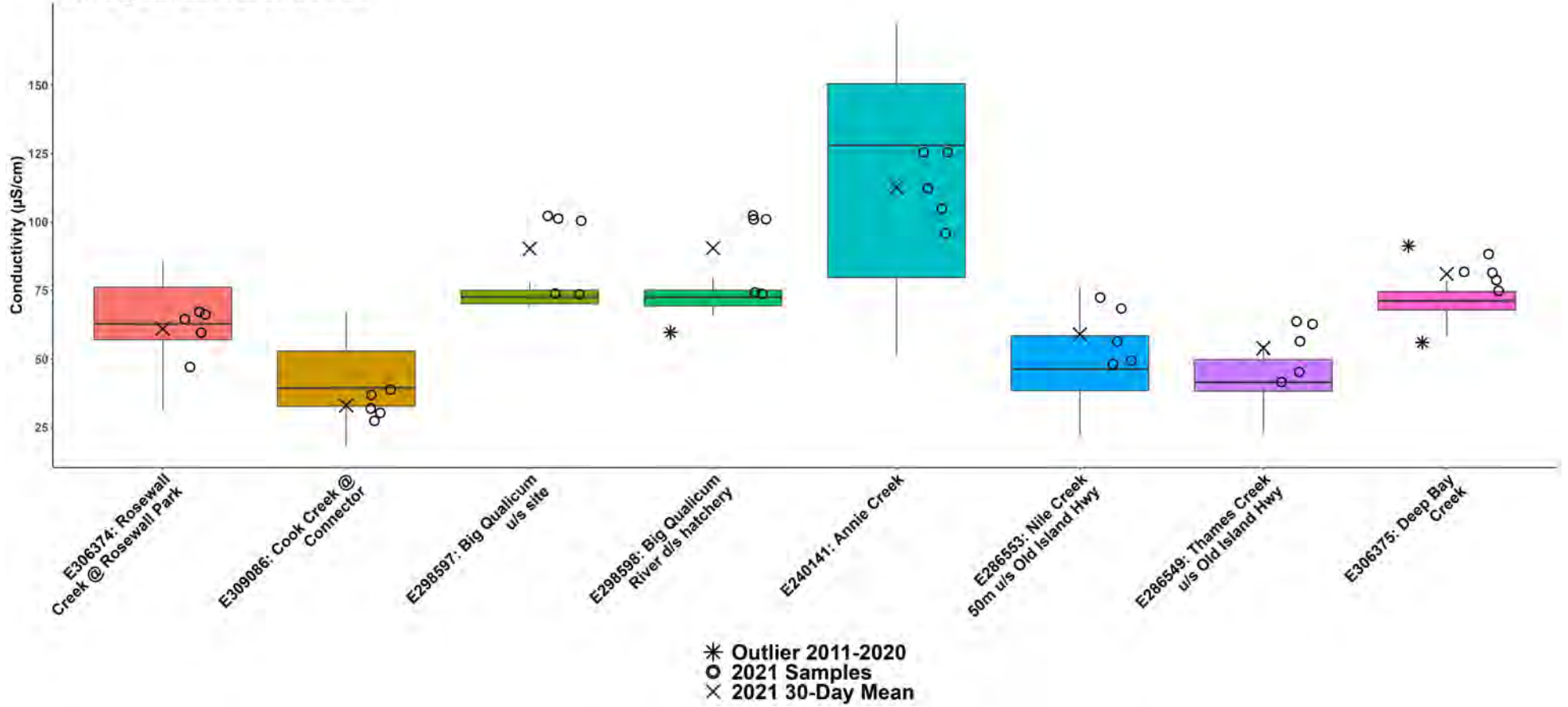
WR1: Big Qualicum Fall Turbidity

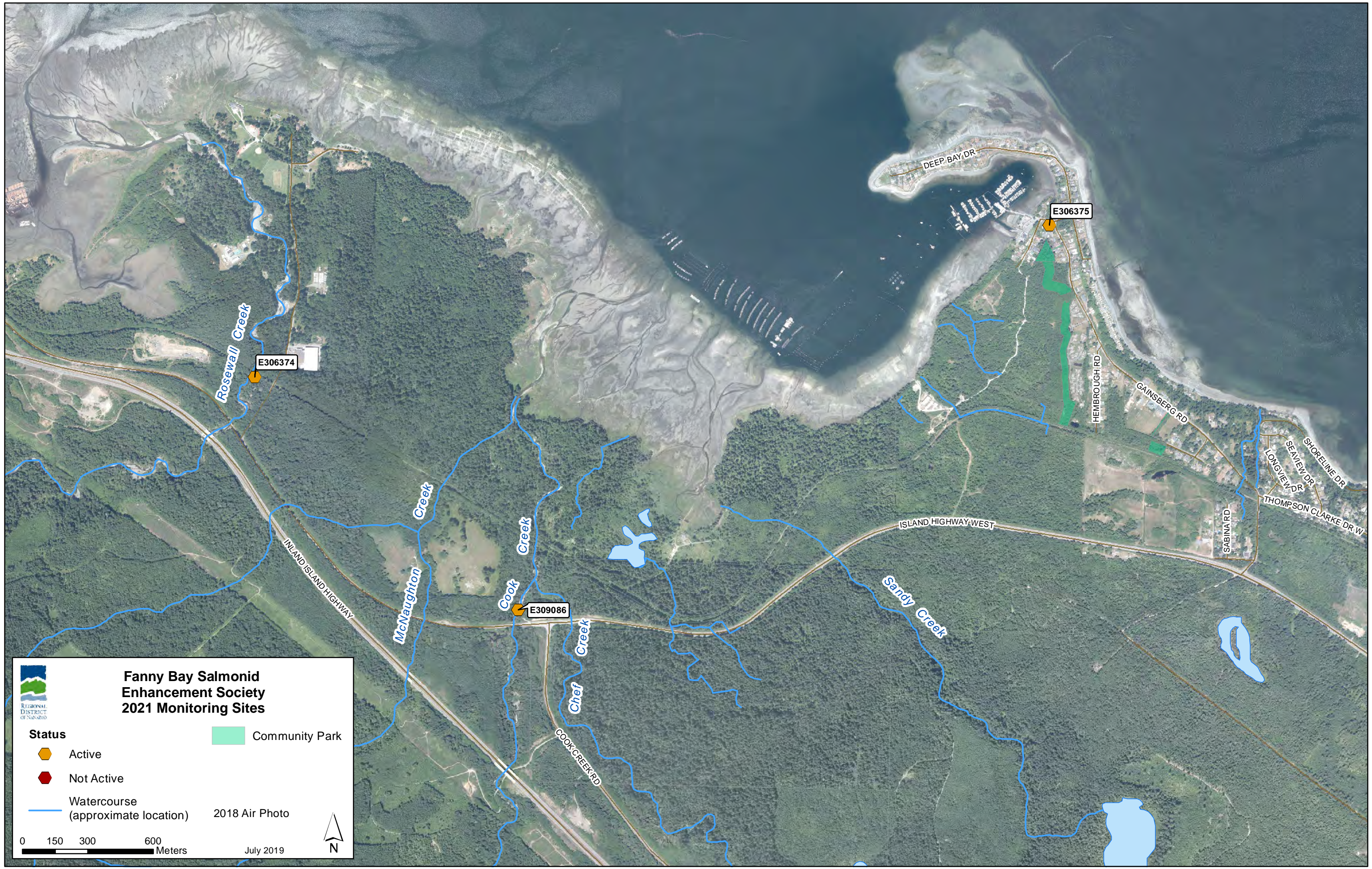


WR1: Big Qualicum Summer Conductivity



WR1: Big Qualicum Fall Conductivity





Fanny Bay Salmonid Enhancement Society 2021 Monitoring Sites

REGIONAL DISTRICT OF NANAIMO

Status

- Active (Orange pentagon)
- Not Active (Red pentagon)

Watercourse (approximate location) (Blue line)

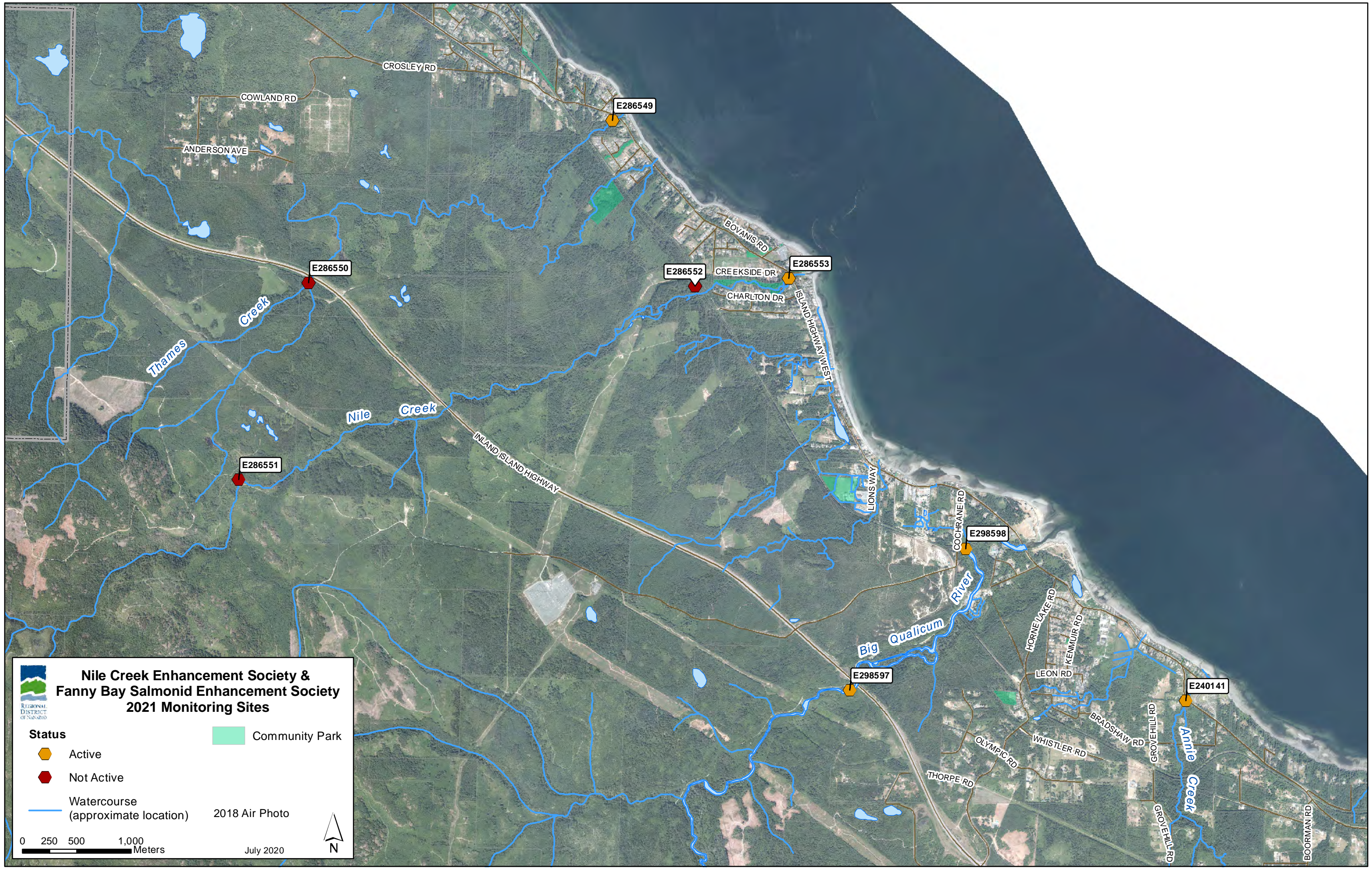
Community Park (Green shaded area)

2018 Air Photo

0 150 300 600 Meters





July 2019

N



Nile Creek Enhancement Society & Fanny Bay Salmonid Enhancement Society 2021 Monitoring Sites

REGIONAL DISTRICT OF NANAIMO

Status	 Community Park
 Active	
 Not Active	
 Watercourse (approximate location)	2018 Air Photo

0 250 500 1,000 Meters

July 2020

N