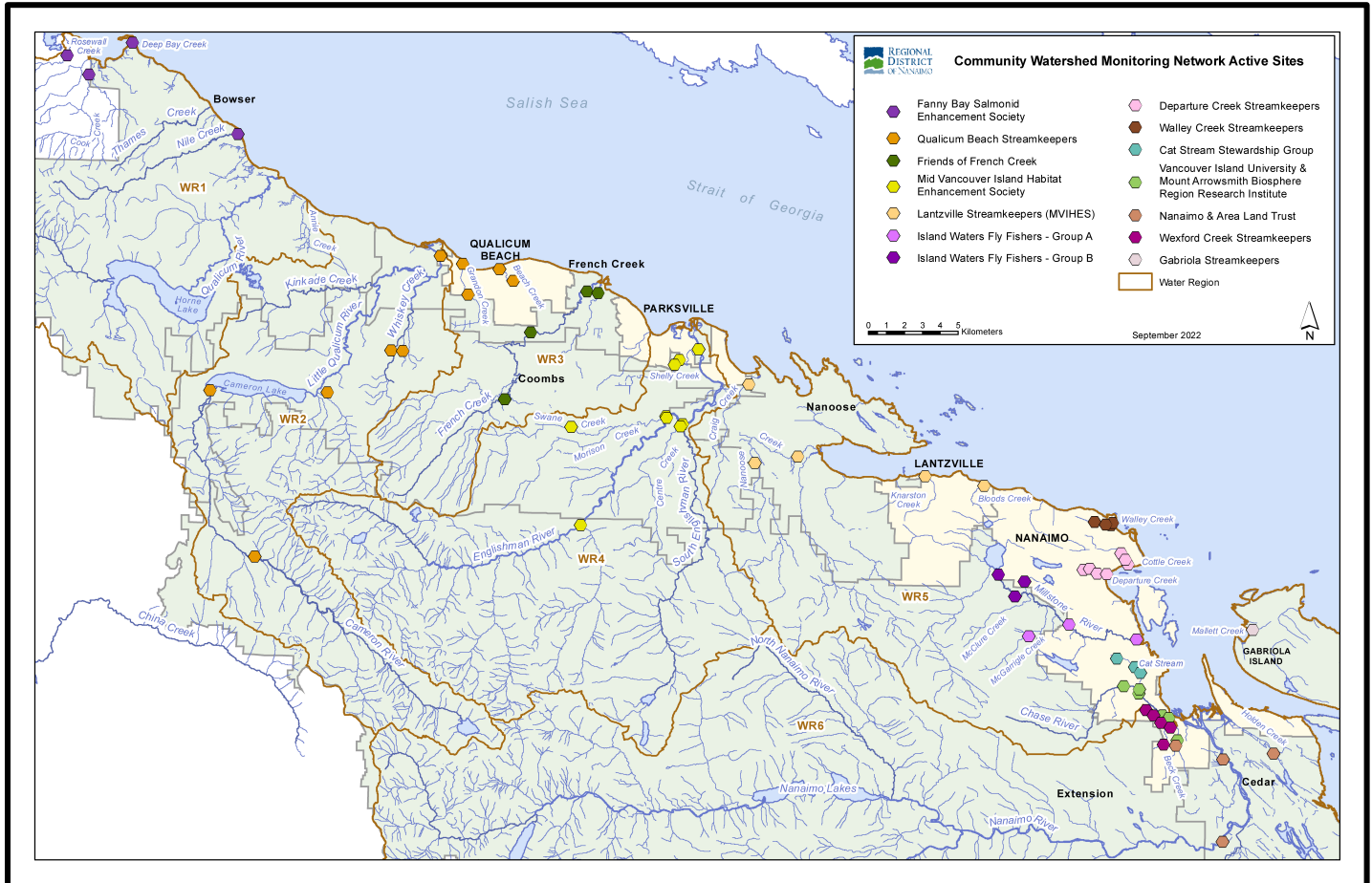


# Community Watershed Monitoring Network

## 2022 Results by Water Region



Included in Water Region (WR) 1 package:

1. CWMN WR1 sample sites
2. How to interpret a box plot
3. Box Plot Comparison – 2022 data to previous years: *displayed by parameter (Turbidity, Dissolved Oxygen, Temperature, Conductivity) & sample period (summer, fall)*
4. FBSES CWMN map of sample sites



Water Region 1  
sampled by:

**Fanny Bay Salmonid  
Enhancement Society (FBSES)**

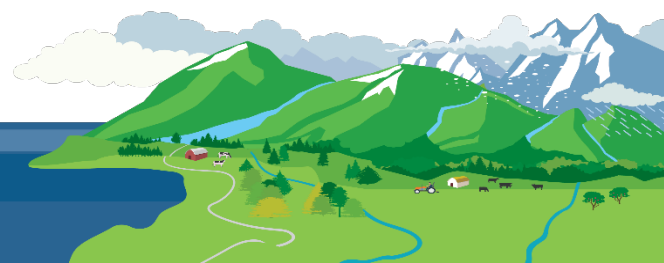


## WR1 CWMN Sample Sites:

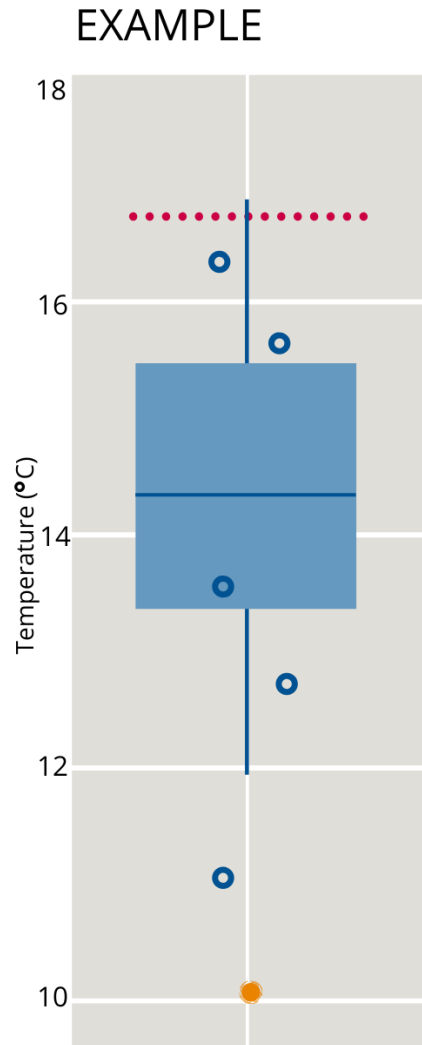
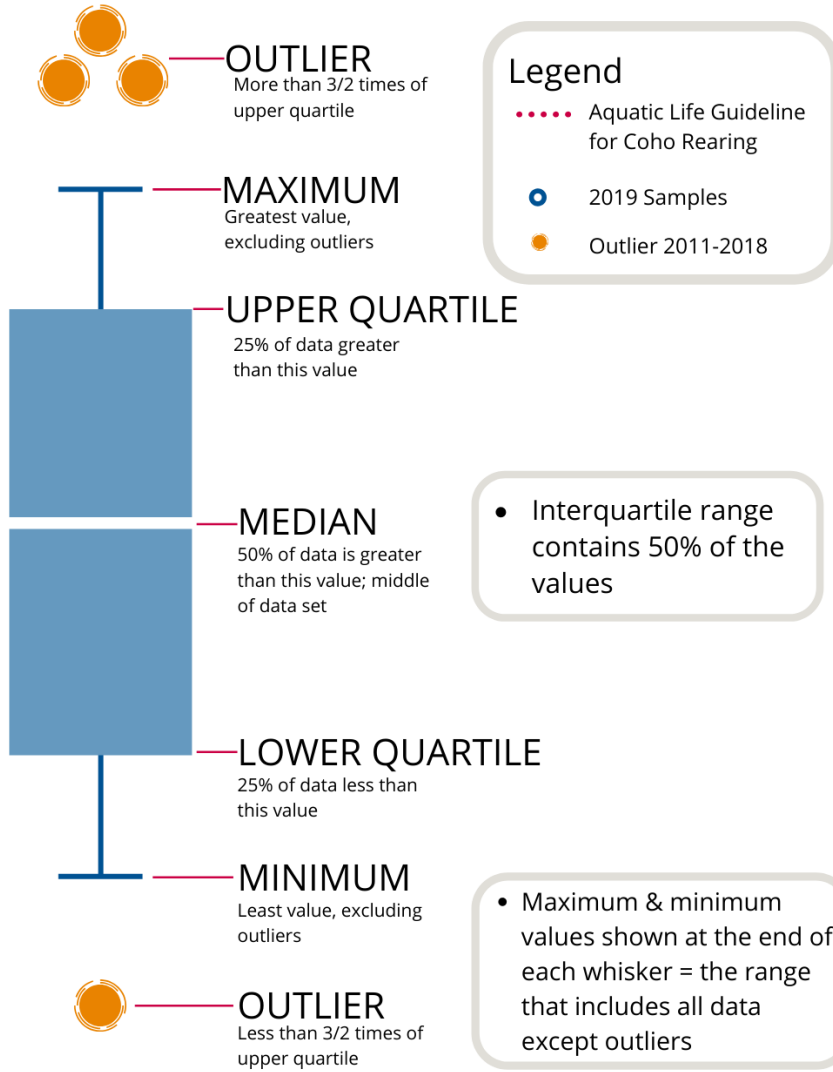
The table below shows the sites monitored by each of the streamkeeper organizations, as well as the number of years and which years a site was sampled. The number of years is important to keep in mind when interpreting the box plots as the plot for each site may contain a slightly different temporal range.

Group	EMS ID	Geographic Description	Years Sampled	Years Monitored
FBSES	E306374	Rosewall Creek @ Rosewall Creek Park	7	2016 – present
FBSES	E309086	Cook Creek at Old Island Hwy Connector	6	2017 – present
FBSES	E306375	Deep Bay Creek	7	2016 – present
FBSES	E286553	Nile Creek @ Rosepark Rd (50m u/s Old Island Hwy)	11	2011 – present <sup>^</sup>

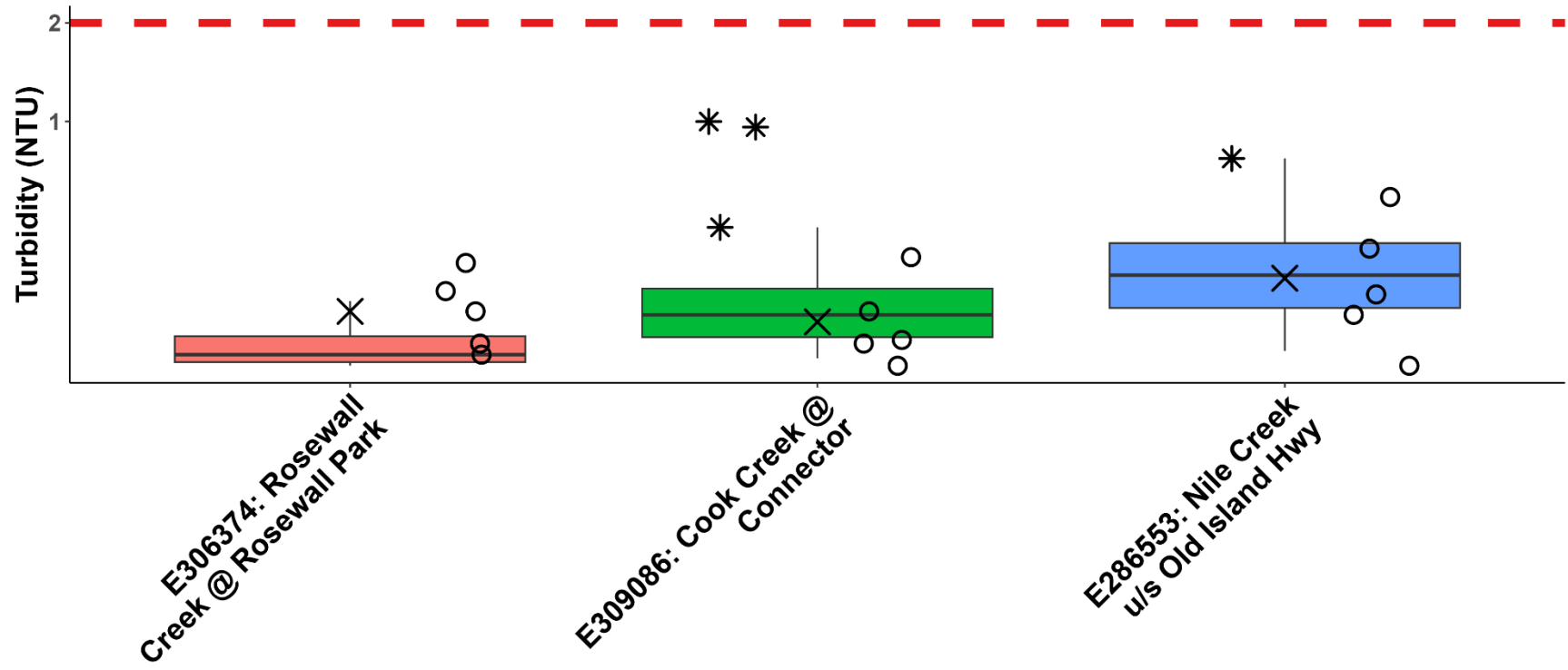
*WR1 notes for the number of years sampled: <sup>^</sup>2016 not sampled.*



# How to Interpret a Box Plot:



# WR1: Big Qualicum Summer Turbidity

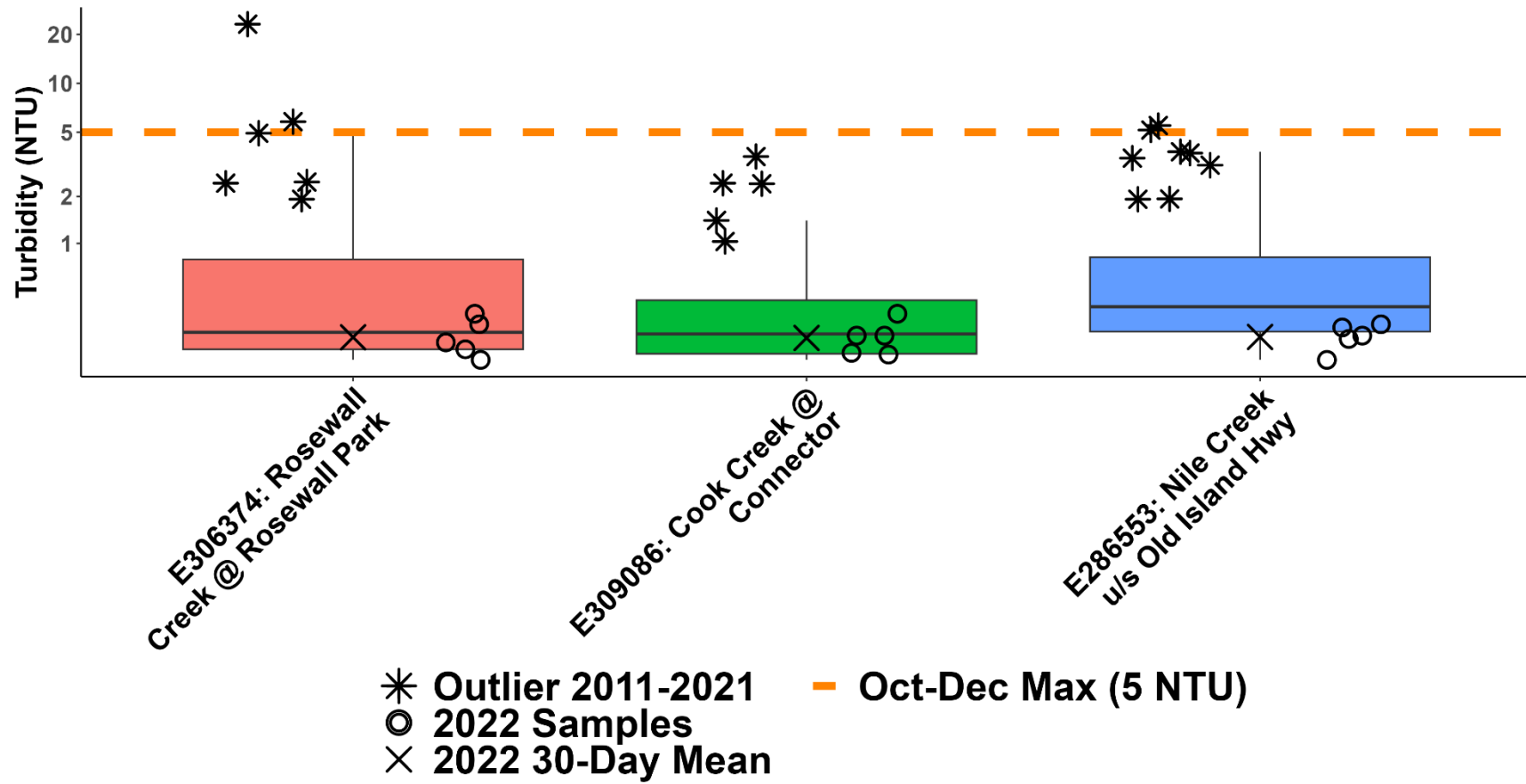


\* Outlier 2011-2021      - Jan-Sept Max (2 NTU)  
 ○ 2022 Samples  
 × 2022 30-Day Mean

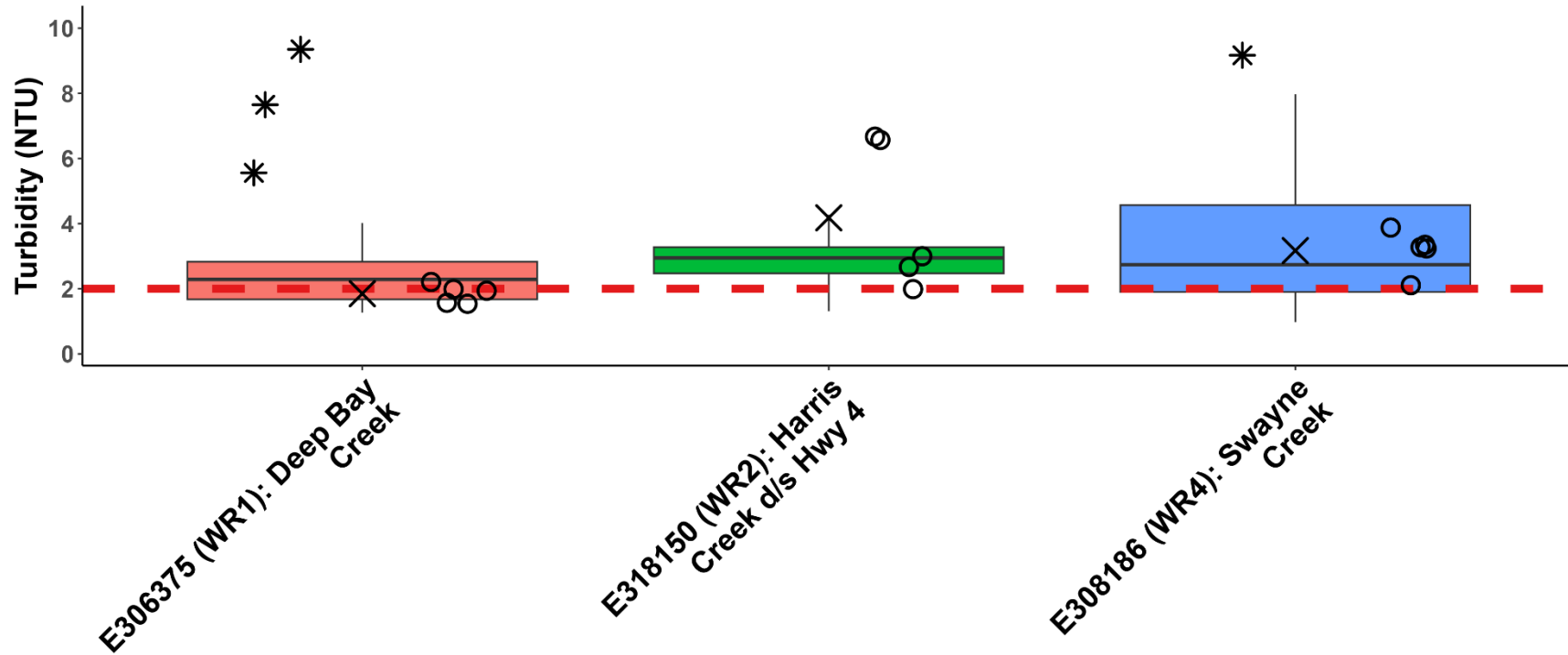




# WR1: Big Qualicum Fall Turbidity



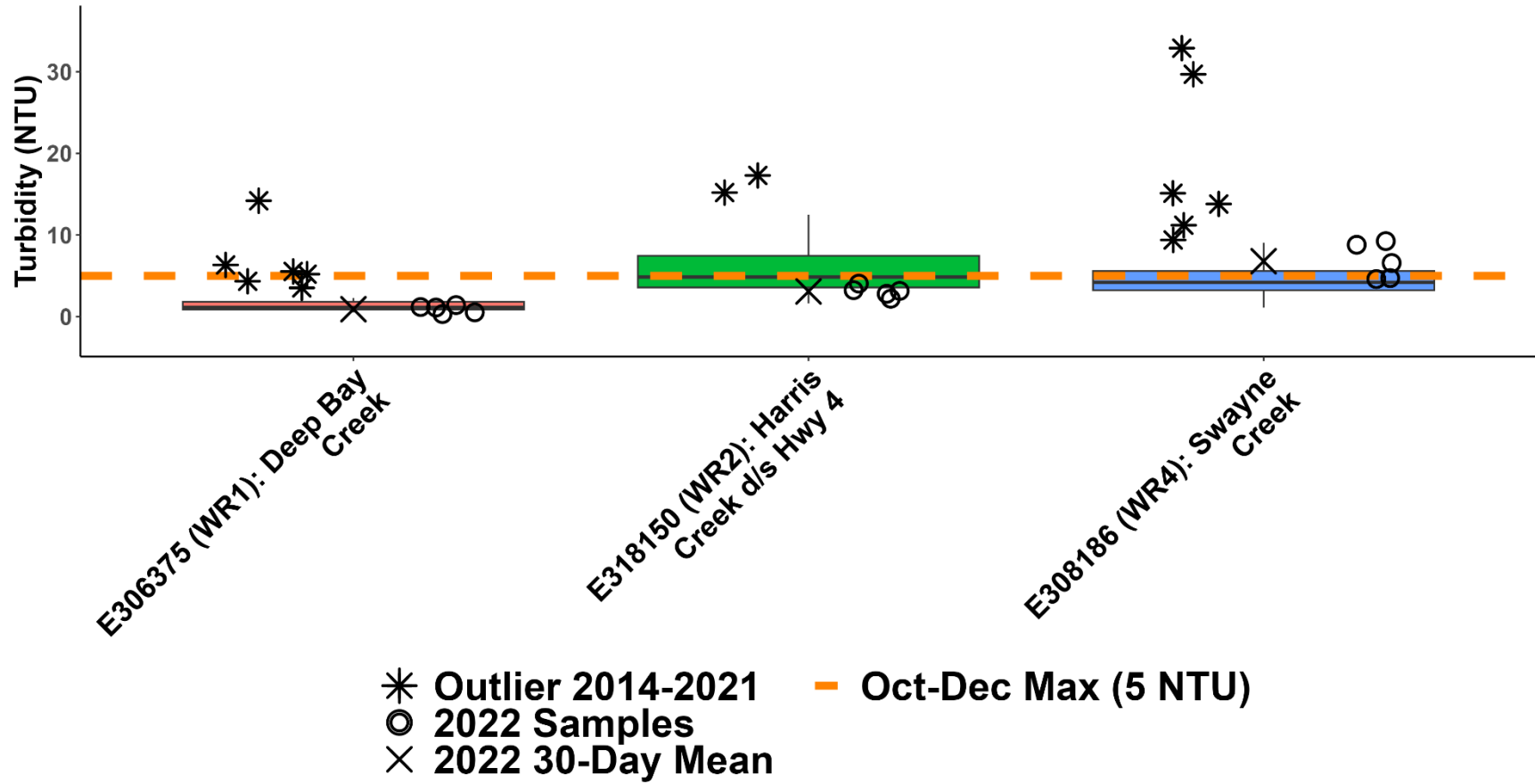
### Sites with High Summer Turbidity Values



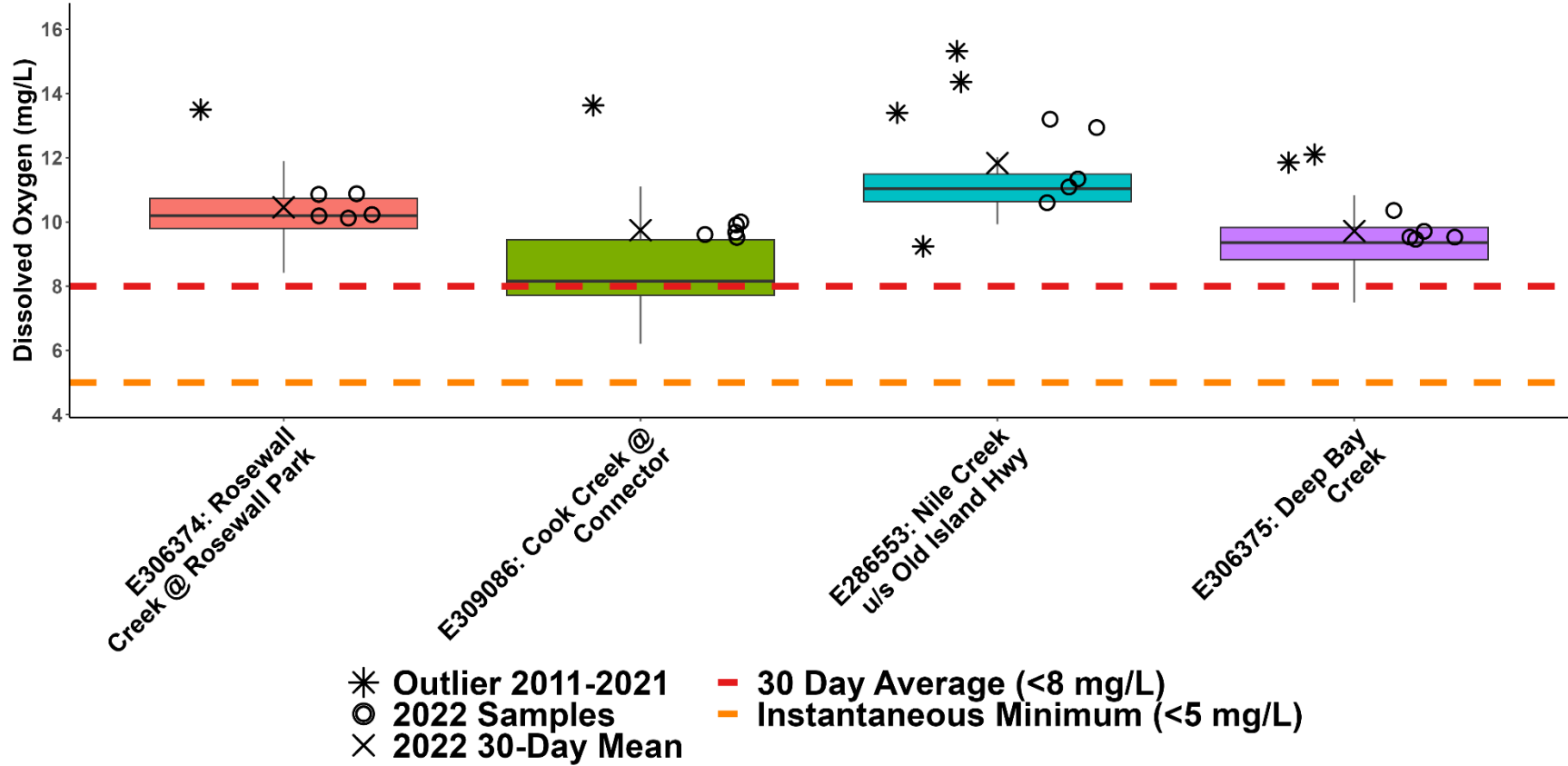
\* Outlier 2014-2021      - Jan-Sept Max (2 NTU)  
 ○ 2022 Samples  
 × 2022 30-Day Mean



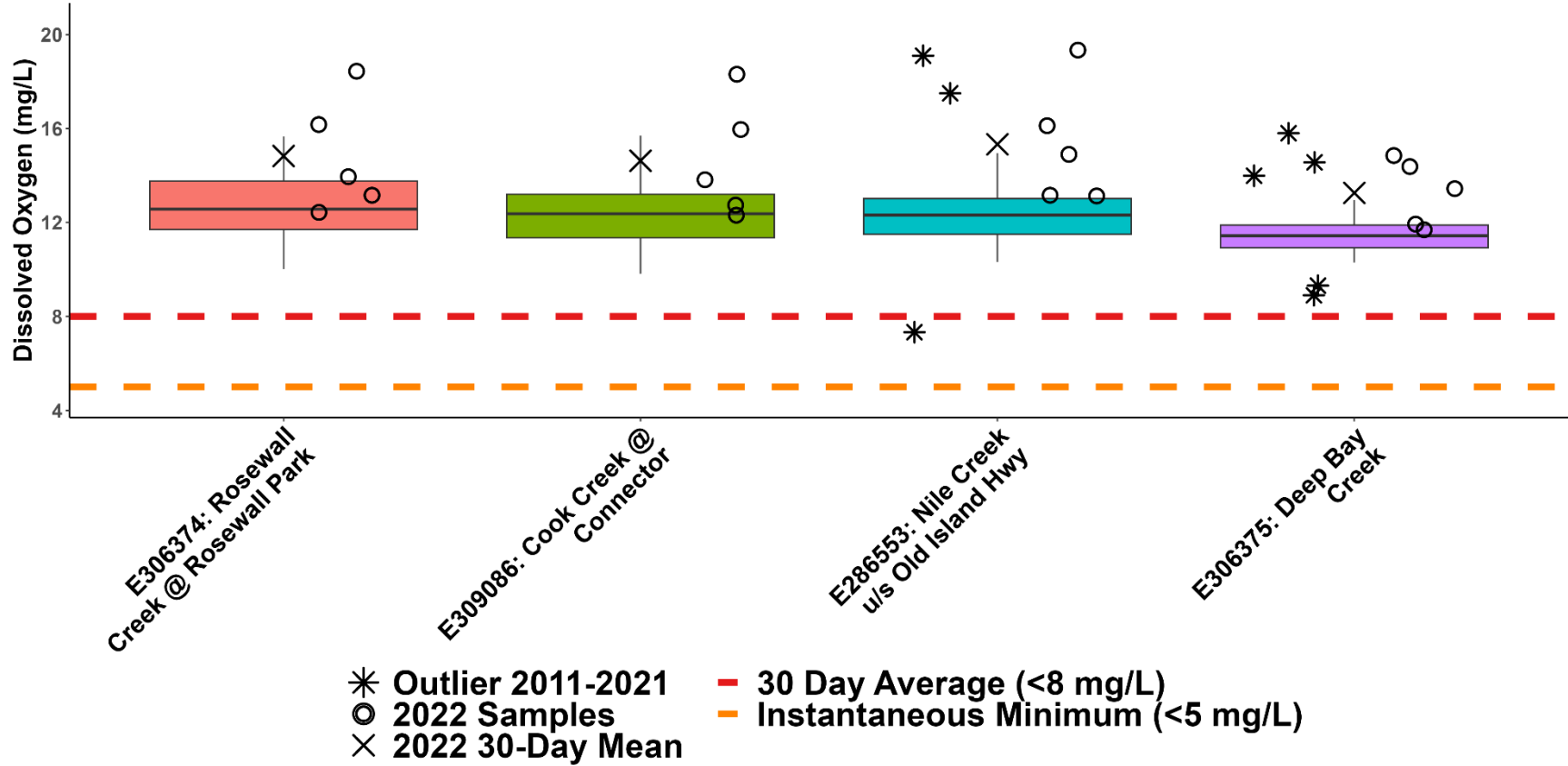
### Sites with High Fall Turbidity Values



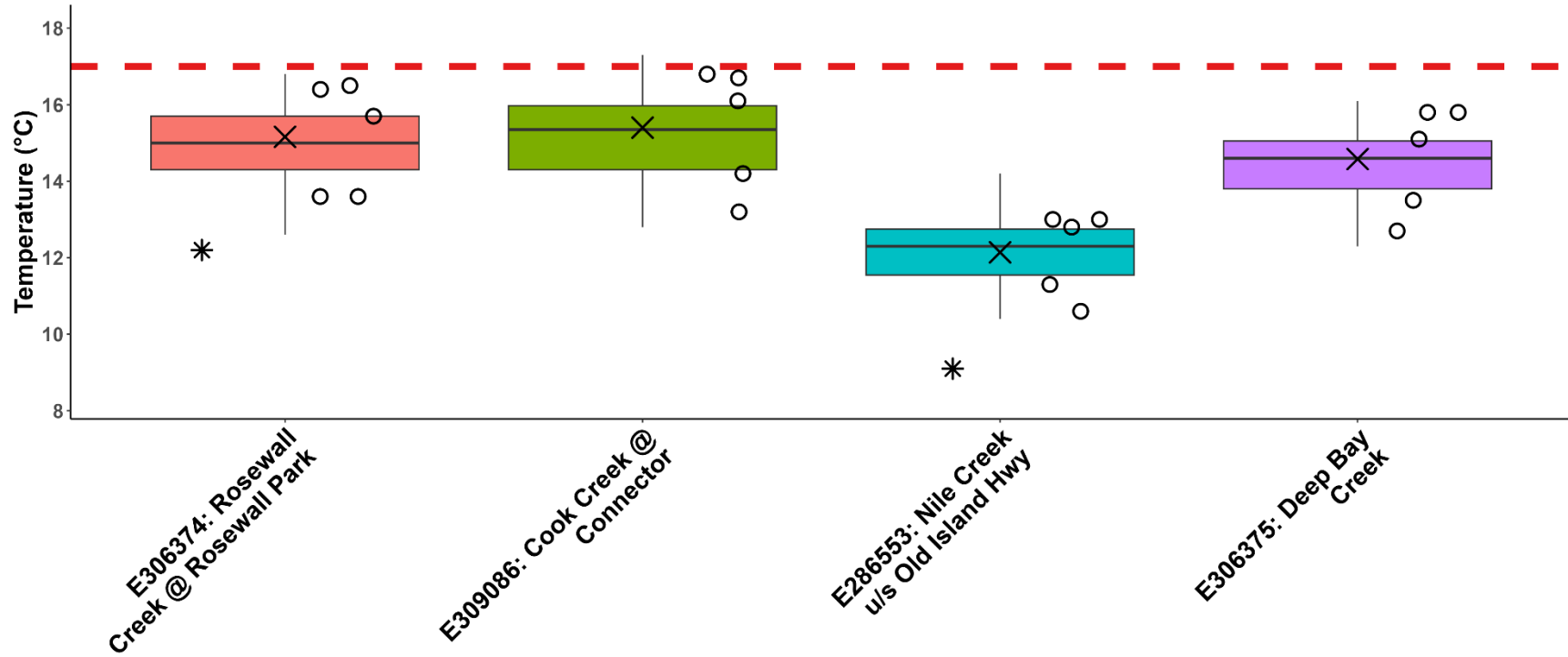
### WR1: Big Qualicum Summer Dissolved Oxygen



### WR1: Big Qualicum Fall Dissolved Oxygen



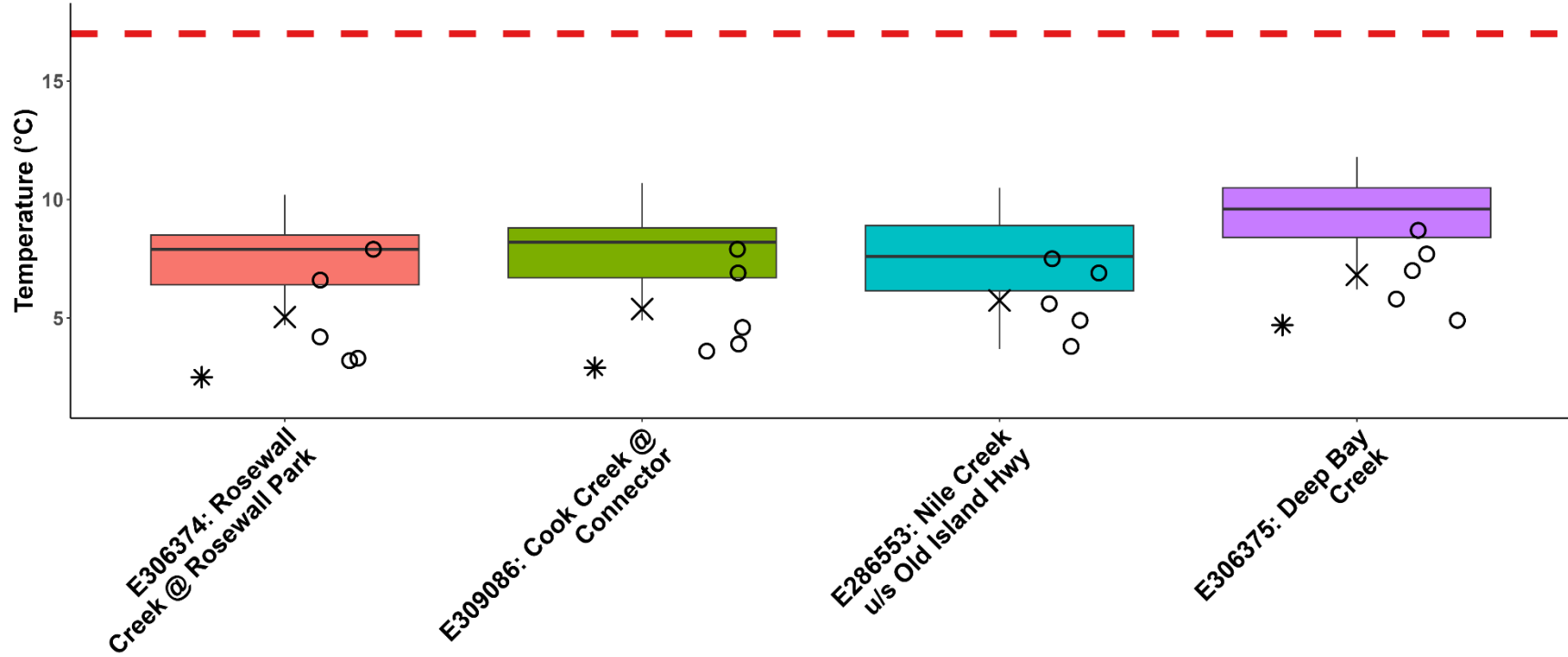
### WR1: Big Qualicum Summer Temperature



- \* Outlier 2011-2021
- 2022 Samples
- × 2022 30-Day Mean
- Aquatic Life Guideline for Coho Rearing (17°C)



### WR1: Big Qualicum Fall Temperature

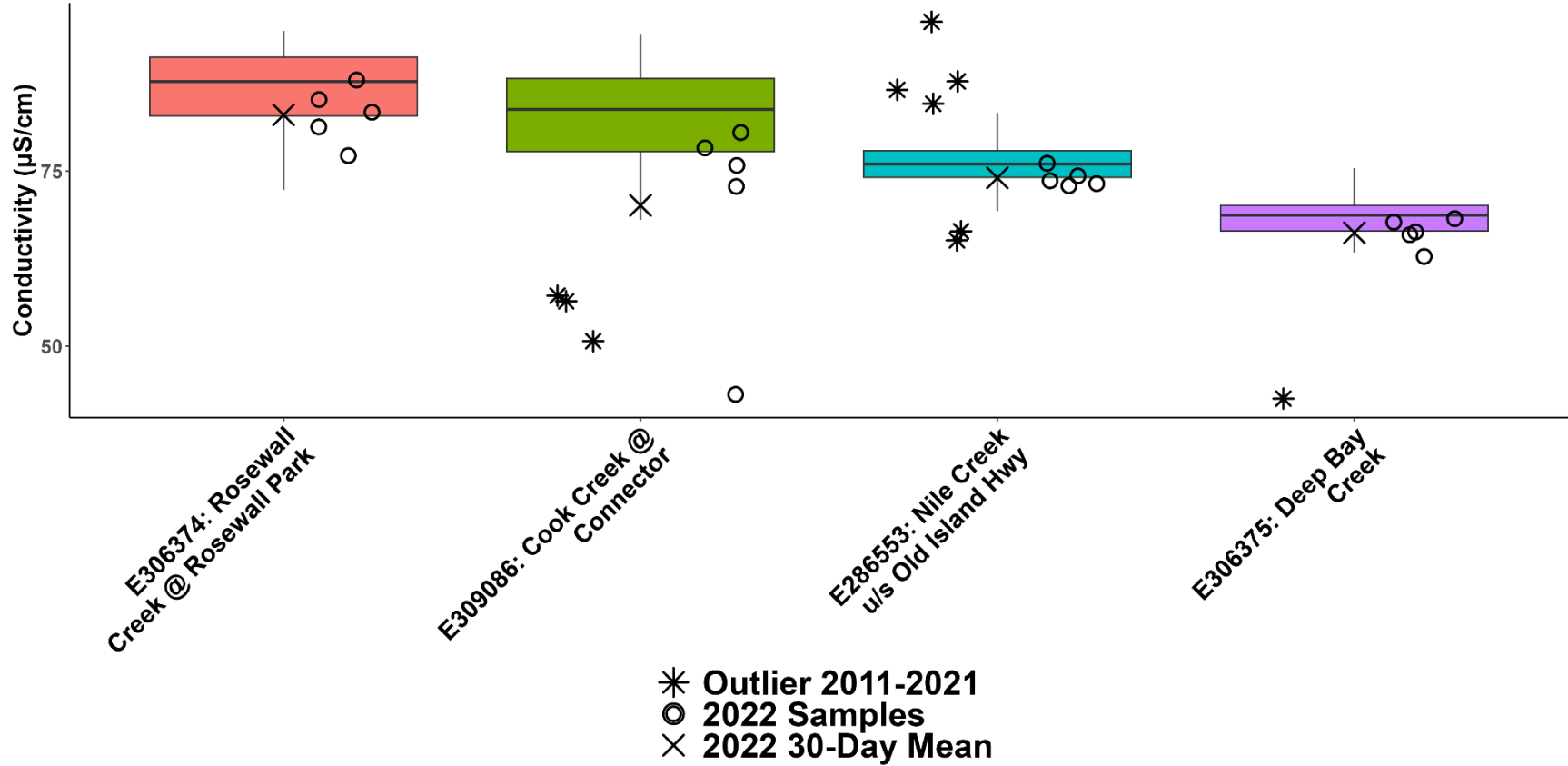


\* Outlier 2011-2021    - Aquatic Life Guideline for Coho Rearing (17°C)  
 ○ 2022 Samples  
 × 2022 30-Day Mean

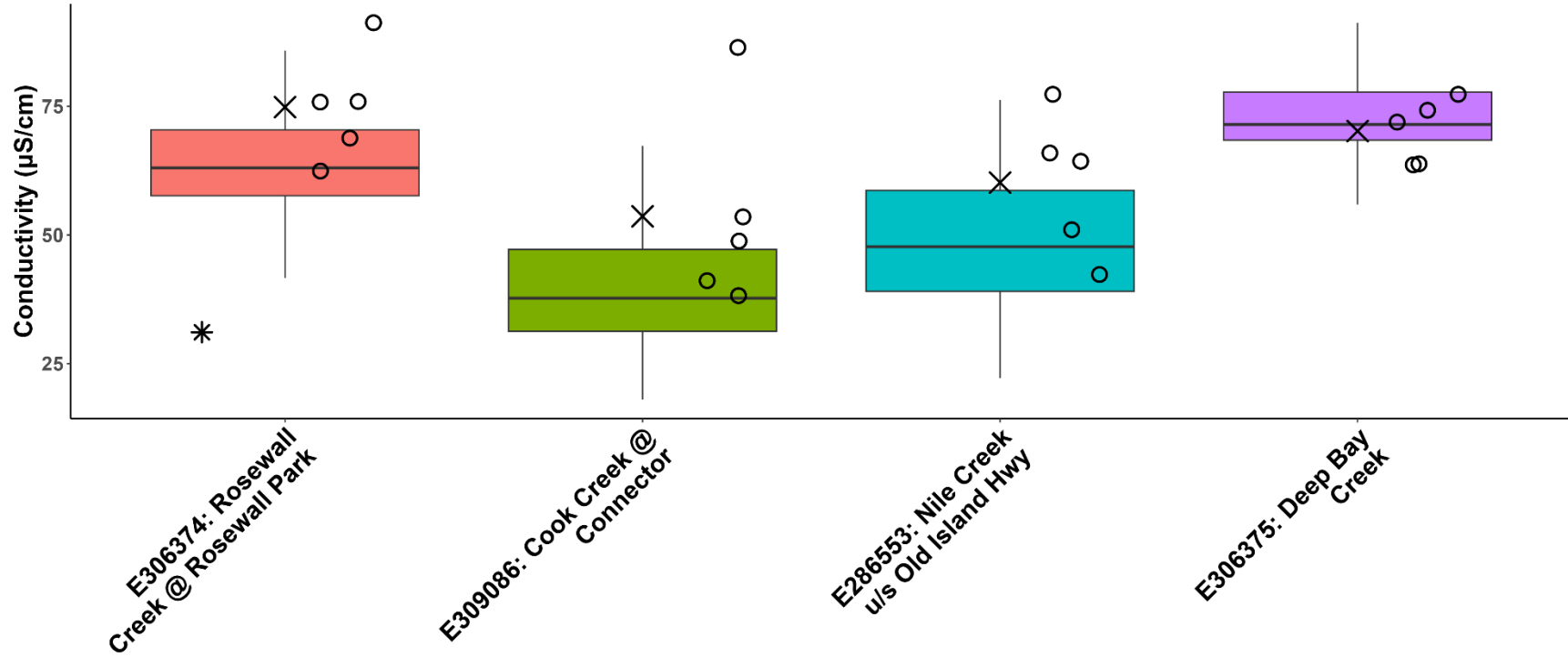




### WR1: Big Qualicum Summer Conductivity



### WR1: Big Qualicum Fall Conductivity



\* Outlier 2011-2021  
 ○ 2022 Samples  
 × 2022 30-Day Mean











**Fanny Bay Salmonid Enhancement Society 2022 Monitoring Sites**

**Status**

-  Active
-  Not Active


**Watercourse (approximate location)**

 2020 Air Photo

 Community Park

0 200 400 800 Meters

July 2022

 N