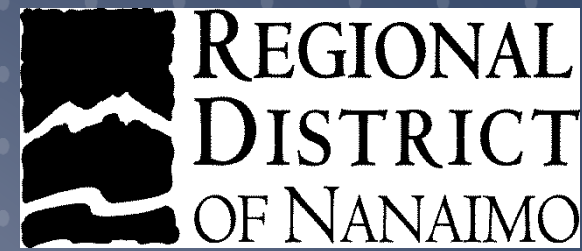


WELCOME

July 23rd, 2014



DWWP Technical
Advisory Committee



TECHNICAL ADVISORY COMMITTEE

- ▶ **Need:** To foster healthy and sustainable water resources in our region.
- ▶ **Purpose:** To proactively work together to achieve watershed protection and health in our region through the Drinking Water and Watershed Protection Service.
- ▶ **Principles:** Collaboration, communication, on-going learning, oriented around action. What other principles should guide our work?
- ▶ **People:** We represent the stakeholders and decision-makers in the region's watersheds; each member holds important perspective and information to contribute to the knowledge of the group and our concerted actions moving forward. Who else can we engage from a technical advisory perspective?
- ▶ **Concept:** Meet 2 – 3 times per year, or more when necessary. Everyone leaves with actions to activate in their own organizations / networks to further the purpose of this initiative.
- ▶ **Harvest:** Establish strong working relationships and aligned purpose; This group will provide guidance on how to move forward with different initiatives – in the form of supported options to select from, partners to directly work with, and resources to pool.



PARTICIPATORY INTRO Q'S

- ▶ 1. What is your focal current project?
- ▶ 2. What do you see as the current biggest priority for our region's watersheds?

FIRST NATIONS ENGAGEMENT

- ▶ How can we meaningfully engage First Nations in the process of visioning and planning for watershed protection?
- ▶ Share personal experiences that lend wisdom to successful partnership with First Nations?
- ▶ Anyone working closely with local First Nations on current projects that relate to water?



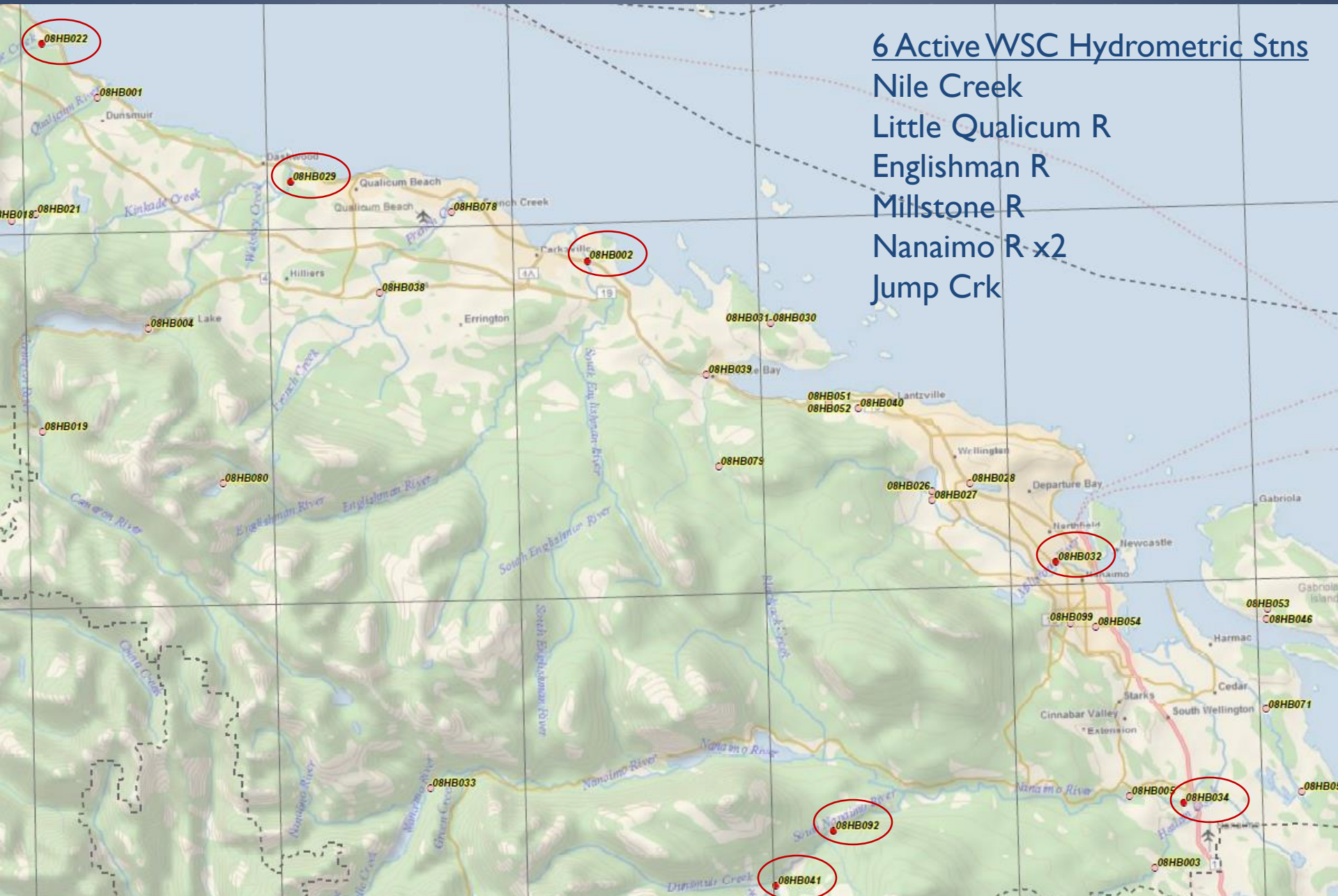
STREAM FLOW MONITORING

- ▶ Which organizations represented on the TAC are currently engaged in (or have interest in) stream flow monitoring?
- ▶ What do you see as the value of improved stream flow monitoring to drinking water and watershed protection in our region? Who do you suggest should be involved?
- ▶ Who here is interested in being involved on a sub-committee to discuss:
 - Priority sites
 - Data storage /interpretation
 - Partners (roles & resources)



6 Active WSC Hydrometric Stns

- Nile Creek
- Little Qualicum R
- Englishman R
- Millstone R
- Nanaimo R x2
- Jump Crk



Environment Canada, Water Survey of Canada. Active and Historic Hydrometric Stations (May 2014)

● Active Station ○ Discontinued Station - - - - Regional District

COMMUNITY WATERSHED MONITORING



Surface Water Quality sampling

PRIORITY SITES BASED ON 3 YEAR TRENDS

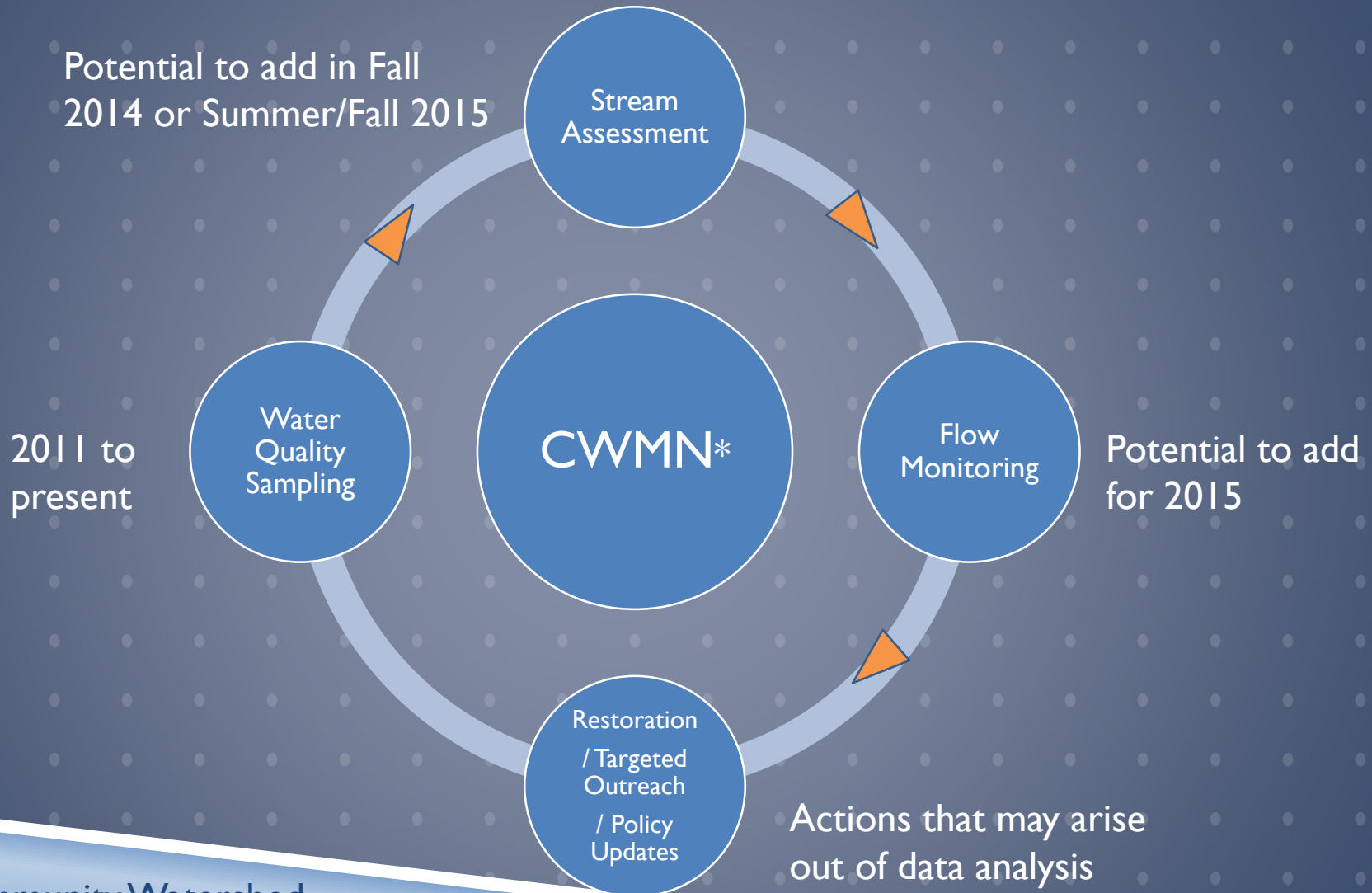
Group	Watershed	Sample Location	EMS ID
QBS	Grandon Creek	West Crescent (Caissons)	E288090
QBS	Grandon Creek	at Laburnum	E288091
QBS	Beach Creek	at Hemsworth Rd	E288092
MVIHES	Englishman River	Morrison Ck u/s ER	E248835
MVIHES	Englishman River	ER at Hwy 19a	121580
MVIHES	Englishman River	Shelly Creek at Blower	E290452
FFCCS	French Creek	Grafton Rd bridge	E243024

Sites with exceedances in more than one parameter during the 2011 - 2013 sample periods

PROGRAM ADAPTATIONS FOR 2014

- ▶ Some **new sample sites have been added upstream** of sites that had displayed turbidity exceedances, to get a better idea of upstream influences.
- ▶ Some sites will now also be sampled for Phosphorus and Bacteria, **additional lab analysis** to determine potential contaminants associated with observed turbidity exceedances.
- ▶ Some sites that did not display any concerns over the first 3 years of the program are suggested as **Do Not Monitor in 2014** to return in 3-5 years. This is under review, still TBD.
- ▶ Some sites are now marked as **“flagship” sample sites** for their watershed, and will be monitored each year for the additional purpose of serving as an indicator for regional stream water quality for the RDN Regional Growth Strategy (RGS) targets and indicators initiative.
- ▶ At least **44 sites** will be monitored in 2014 on **23 rivers/creeks/streams**.

FUTURE OF THE PROGRAM...



(*) Community Watershed Monitoring Network



TEAM WATERSMART

Outreach & Awareness Update

SCHOOL FIELD TRIPS



Nanaimo River Watershed
May 2014

IRRIGATION CHECK-UPS



WATERSHED FRIENDLY YARD CAMPAIGN



REBATES AND INCENTIVES



OUTREACH BOOTH AT COMMUNITY EVENTS



WATER BUDGET GEODATABASE & MAP

REGIONAL DISTRICT OF NANAIMO

[Click Here for help with this page](#)

Searches

Water Map **Water Budget** Reports View Select View

Tools

Map Content

Right-click a layer for more functions

Active Layer: WaterUse_Parcel_AQWR_final

- WaterUse
 - WaterLevel_RDNWells
 - WaterUse_Parcel_AQWR_final
 - Waterservicearea
- Framework
 - Wells_geo
 - Monitoring point
 - Water license pod
 - WaterLicense_Works
 - Waterregion
 - Aquifers (sept2012) water budget
 - overburden aquifers 2012
 - Bedrock aquifers sept 2012
 - Water budget hydrogrid
- Geology

Scale 1: 219,670.07 GO Powered by ROLTA OnPoint™ X : 396,037.46 , Y : 5,459,995.29

CURRENT DATA (2012)

- ▶ Streams
- ▶ Water Region
- ▶ Water Level (RDN wells)
- ▶ Water Use Parcel
- ▶ Water Service Area
- ▶ Wells (BC Wells Database)
- ▶ Monitoring Point – climate, well, hydrometric stations (active & deactivated)
- ▶ Water License – point of diversion
- ▶ Aquifers – overburden aquifers, bedrock aquifers
- ▶ Hydrogrid – precipitation, temp, evapotranspiration, recharge
- ▶ Geology – soils (texture and drainage), surficial geology, terrain area

Questions:

1. What data would be most helpful to you to be housed and interrelated in an RDN served Water (Budget) Map? What data would you search for/ use the most?
2. What data can your organization provide to contribute to the inventory of regional water data to include in a GIS map and database?

THANK YOU FOR YOUR CONTRIBUTIONS
AND GUIDANCE!

