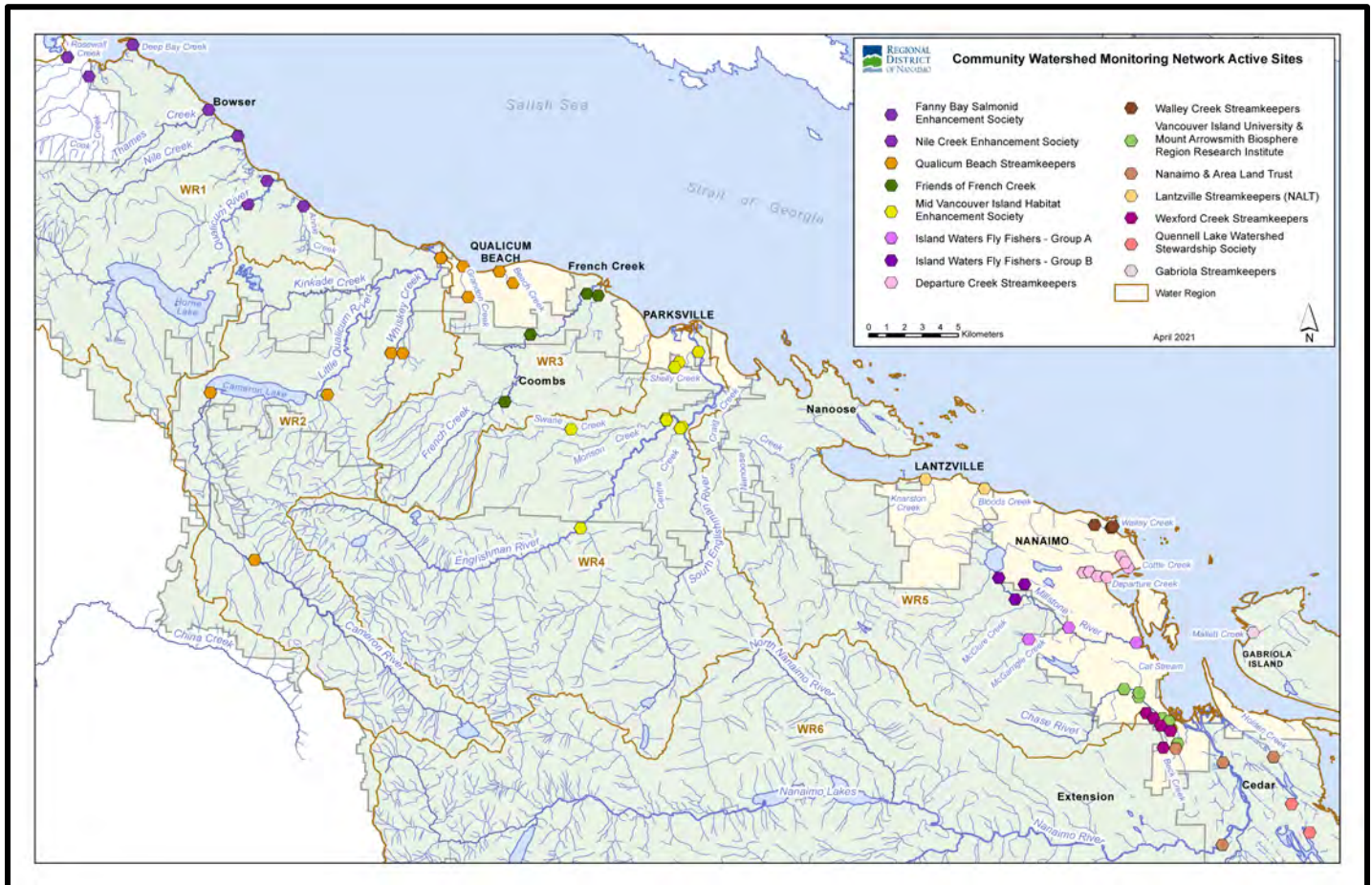


# Community Watershed Monitoring Network 2021 Results by Water Region

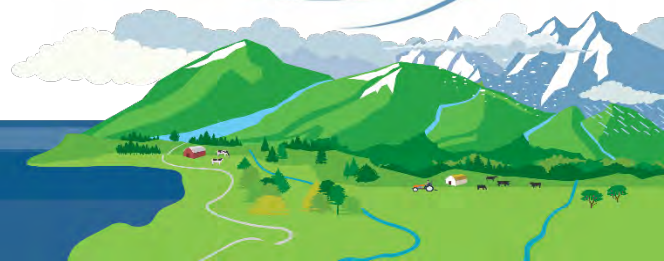


Included in Water Region (WR) 7 package:

1. CWMN WR7 sample sites
2. How to interpret a box plot
3. Box Plot Comparison – 2021 data to previous years: *displayed by parameter (Temperature, Dissolved Oxygen, Turbidity, Conductivity) & sample period (summer, fall)*
4. GSk CWMN map of sample sites



Water Region 7  
sampled by:  
**Gabriola Streamkeepers  
(Gsk)**

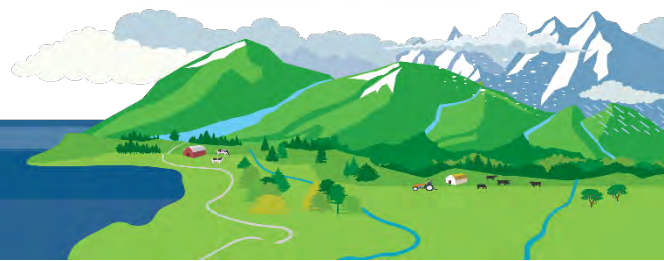
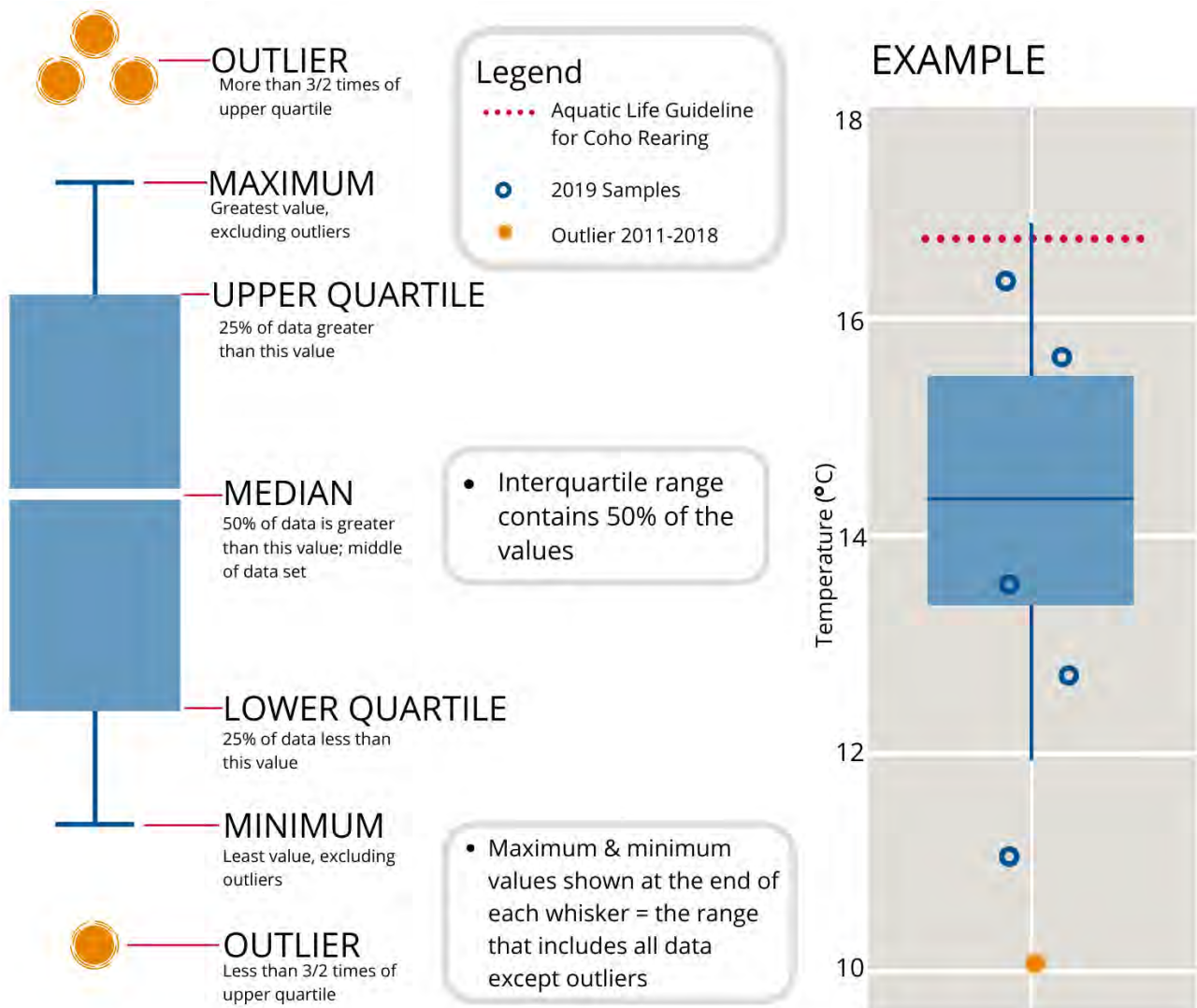


## WR7 CWMN Sample Sites:

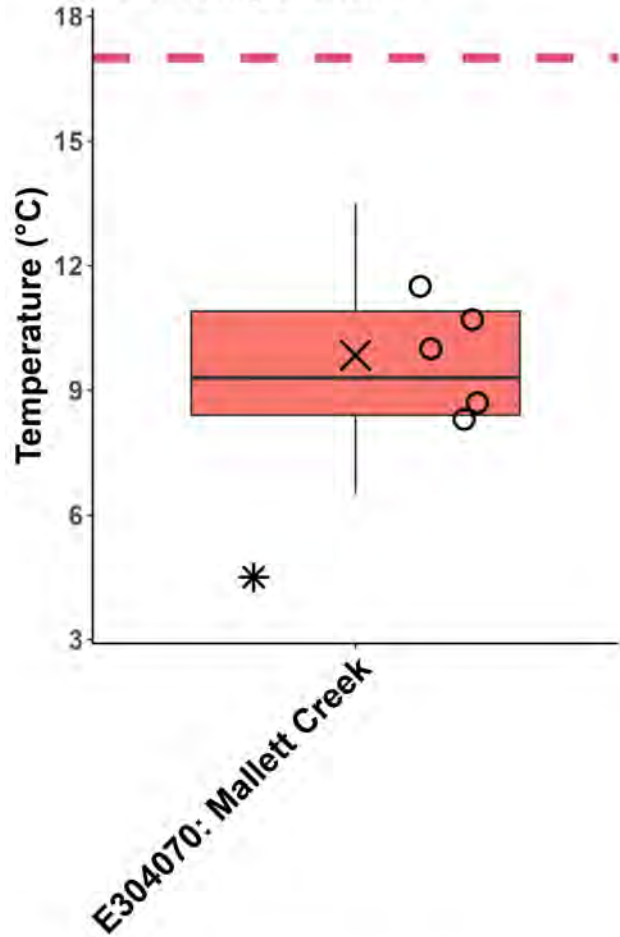
The table below shows the sites monitored by each of the streamkeeper organizations, as well as the number of years and which years a site was sampled. The number of years is important to keep in mind when interpreting the box plots as the plot for each site may contain a slightly different temporal range.

Group	EMS ID	Geographic Description	Years Sampled	Years Monitored
GSk	E304070	Mallett Creek 40m upstream from Taylor Bay Rd	7	2015 - present

## How to Interpret a Box Plot:

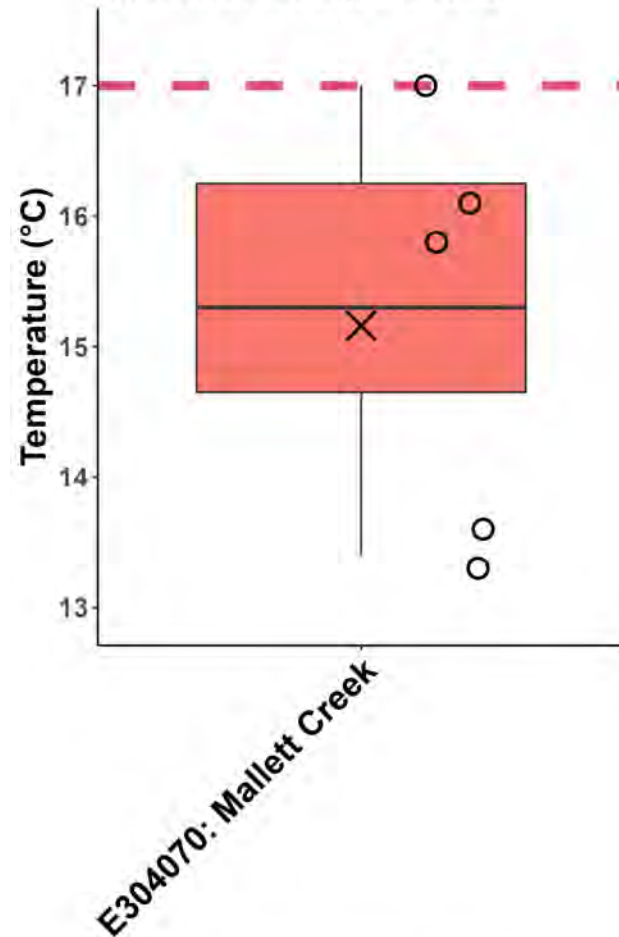


### WR7: Gabriola Island Fall Temperature

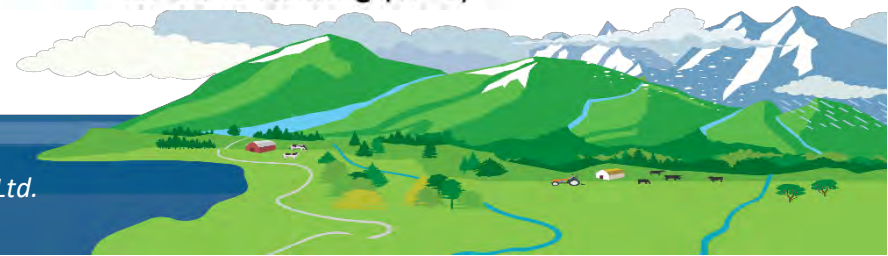


- \* Outlier 2015-2020
- 2021 Samples
- × 2021 30-Day Mean
- Aquatic Life Guideline for Coho Rearing (17°C)

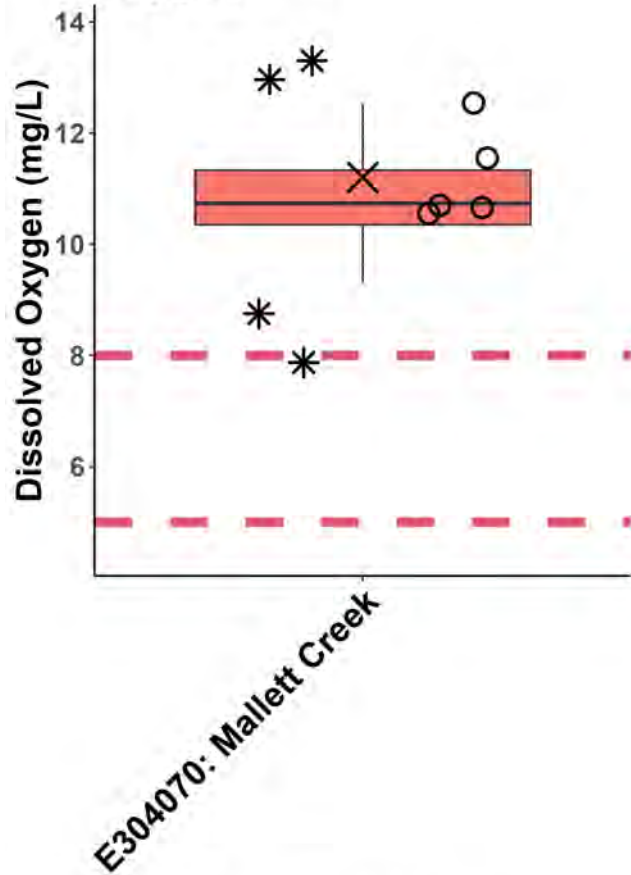
### WR7: Gabriola Island Summer Temperature



- \* Outlier 2015-2020
- 2021 Samples
- × 2021 30-Day Mean
- Aquatic Life Guideline for Coho Rearing (17°C)

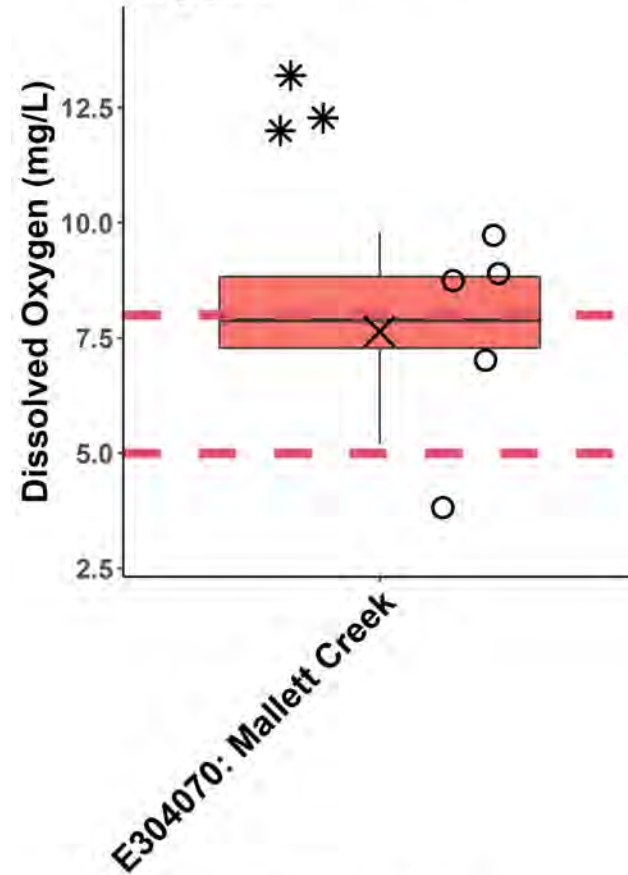


### WR7: Gabriola Island Fall Dissolved Oxygen

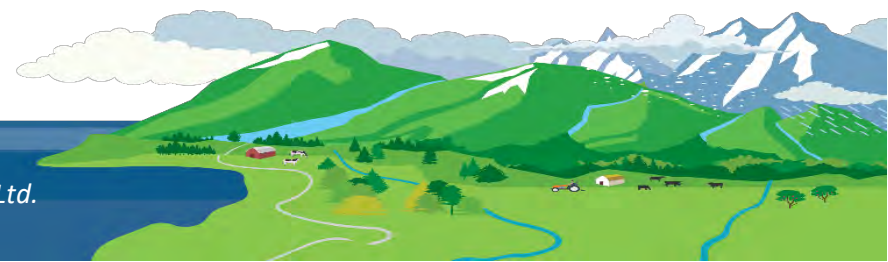


- \* Outlier 2015-2020
- 2021 Samples
- × 2021 30-Day Mean
- 30 Day Average (<8 mg/L)
- Instantaneous Minimum (<5 mg/L)

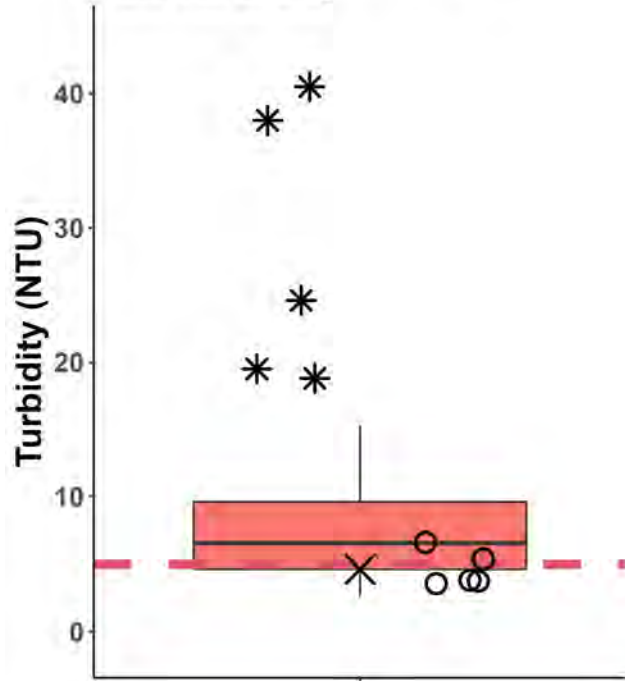
### WR7: Gabriola Island Summer Dissolved Oxygen



- \* Outlier 2015-2020
- 2021 Samples
- × 2021 30-Day Mean
- 30 Day Average (<8 mg/L)
- Instantaneous Minimum (<5 mg/L)



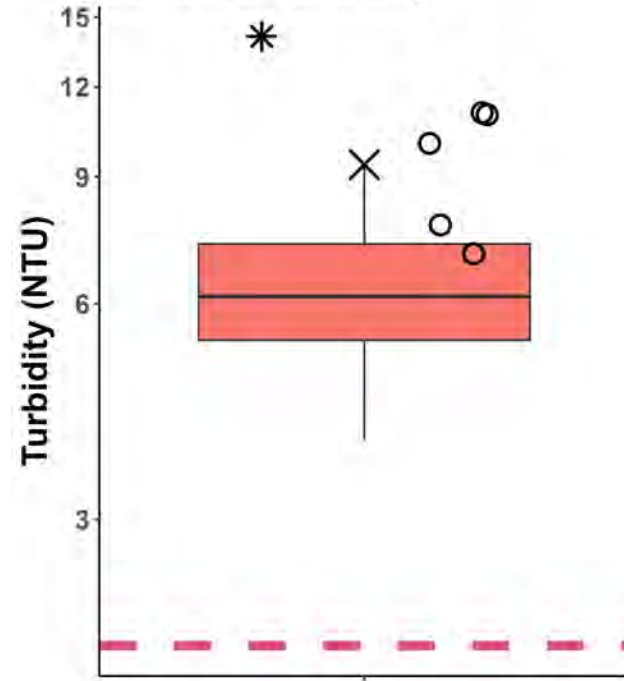
### WR7: Gabriola Island Fall Turbidity



E304070: Mallett Creek

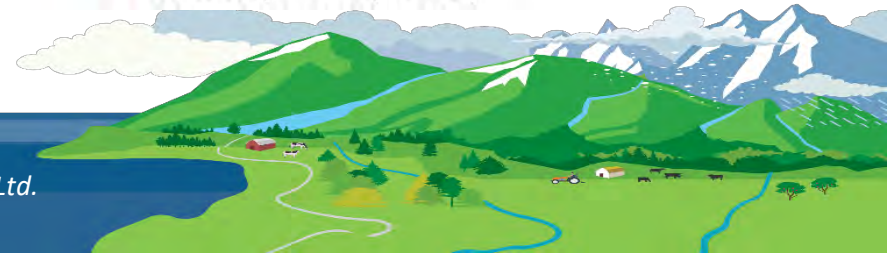
- \* Outlier 2015-2020
- 2021 Samples
- × 2021 30-Day Mean
- Oct-Dec Max (5 NTU)

### WR7: Gabriola Island Summer Turbidity

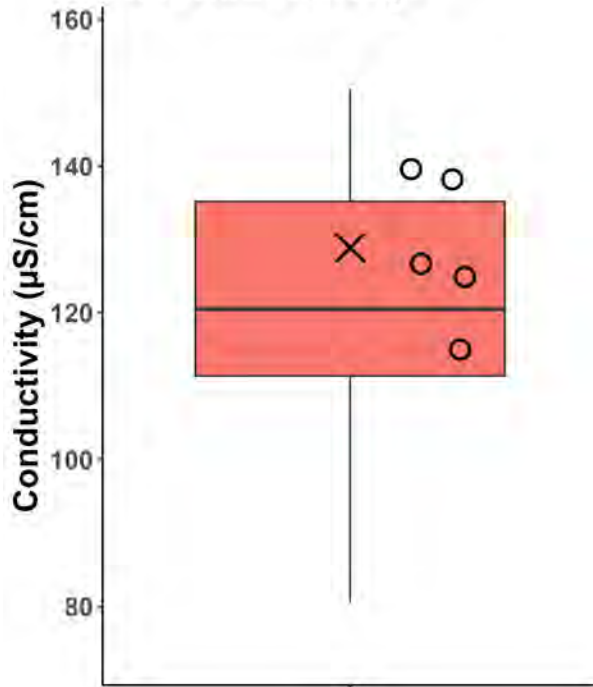


E304070: Mallett Creek

- \* Outlier 2015-2020
- 2021 Samples
- × 2021 30-Day Mean
- Jan-Sept Max (2 NTU)



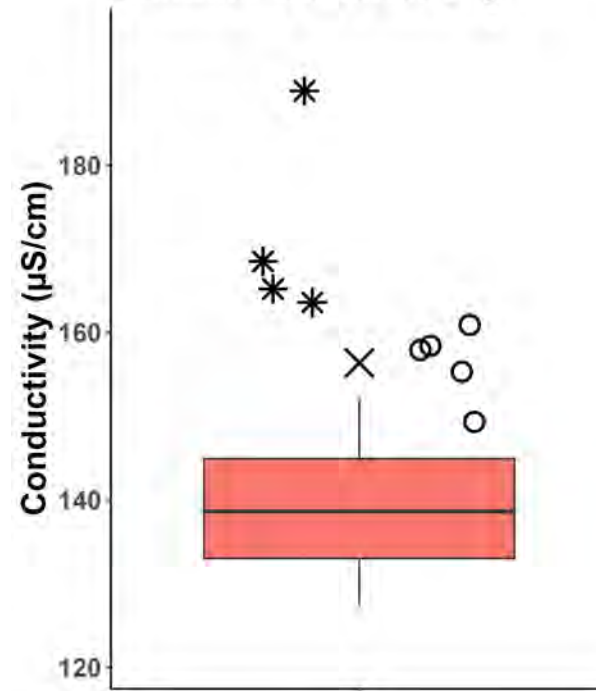
### WR7: Gabriola Island Fall Conductivity



E304070: Mallett Creek

- \* Outlier 2015-2020
- 2021 Samples
- × 2021 30-Day Mean


### WR7: Gabriola Island Summer Conductivity



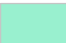



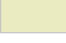

E304070: Mallett Creek

- \* Outlier 2015-2020
- 2021 Samples
- × 2021 30-Day Mean





### Gabriola Streamkeepers 2021 Monitoring Sites

<b>Status</b>	 Community Park
 Active	 Regional Park
 Not Active	 Provincial Park
 Watercourse (approximate location)	2018 Air Photo

0 150 300 600 Meters

July 2019

