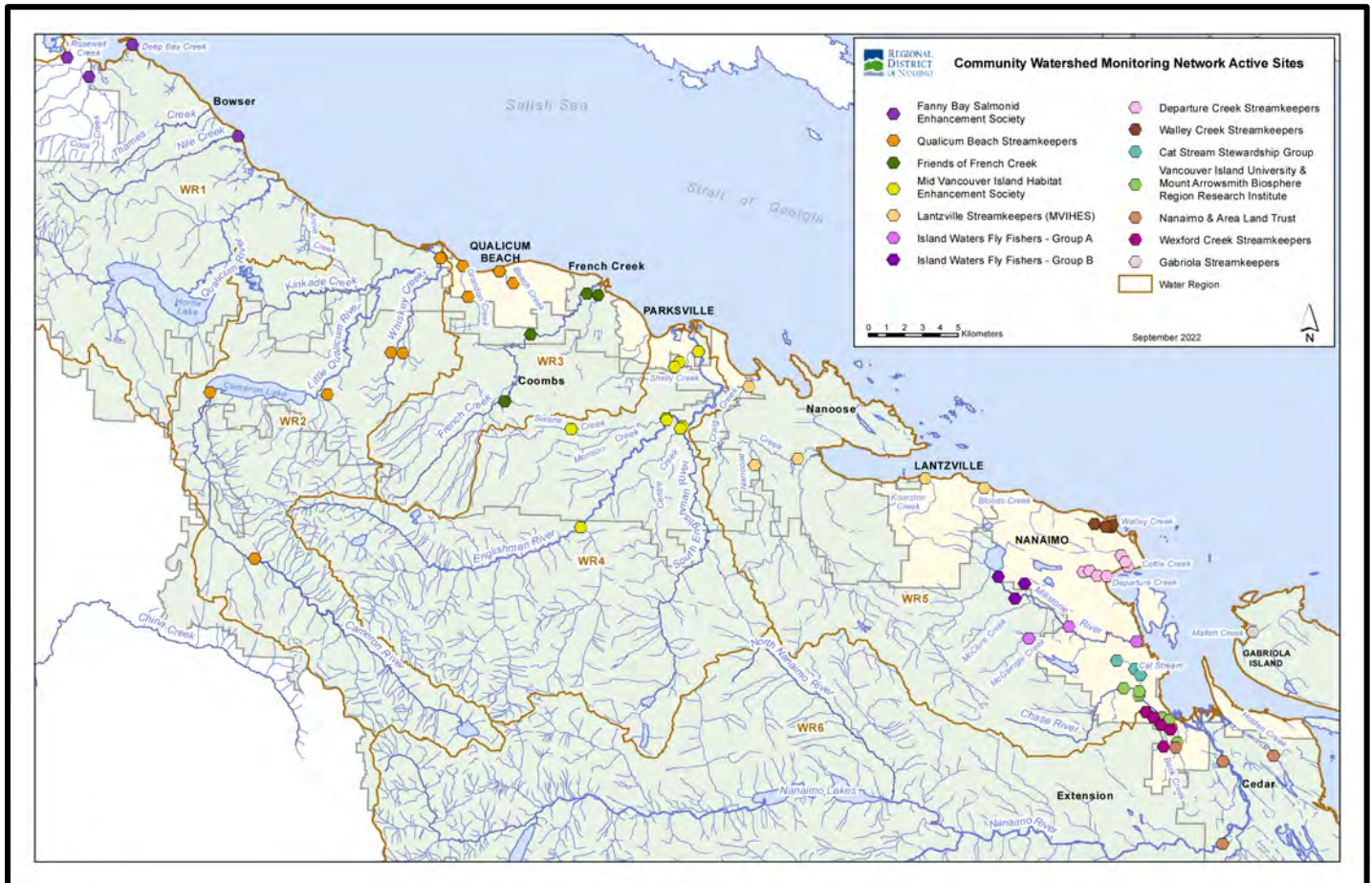


Community Watershed Monitoring Network

2022 Results by Water Region



Included in Water Region (WR) 5-1 package:

1. CWMN WR5 sample sites
2. How to interpret a box plot
3. Box Plot Comparison – 2022 data to previous years: *displayed by parameter (Turbidity, Dissolved Oxygen, Temperature, Conductivity) & sample period (summer, fall)*
4. Mid Vancouver Island Habitat Enhancement Society (MVIHES) Nanoose group map
5. Departure Creek Streamkeepers (DCS) map
6. Walley Creek Streamkeepers (WCS) map



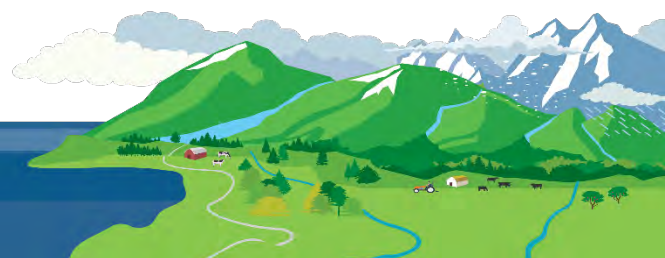
Water Region 5-1
sampled by:
**Mid Vancouver Island Habitat
Enhancement Society
(MVIHES)**
&
**Departure Creek
Streamkeepers (DCS)**
&
**Walley Creek Streamkeepers
(WCS)**



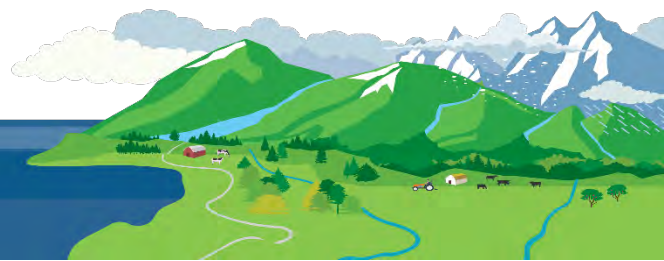
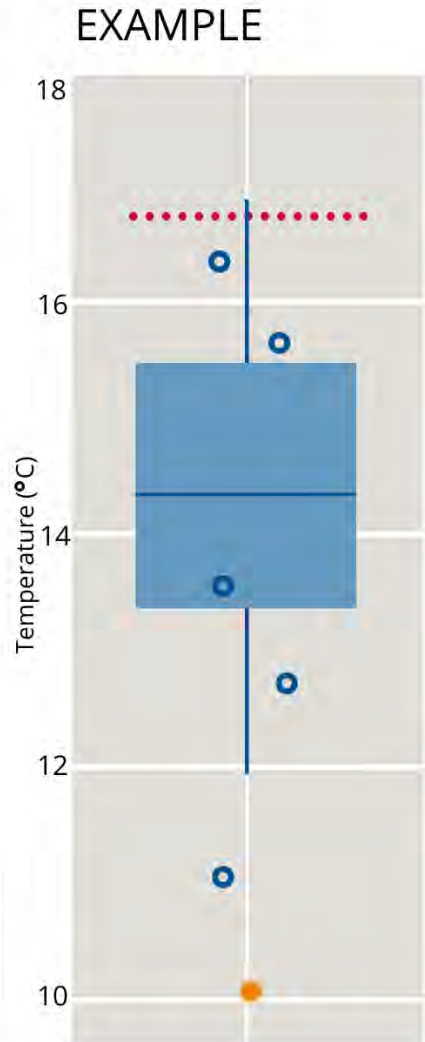
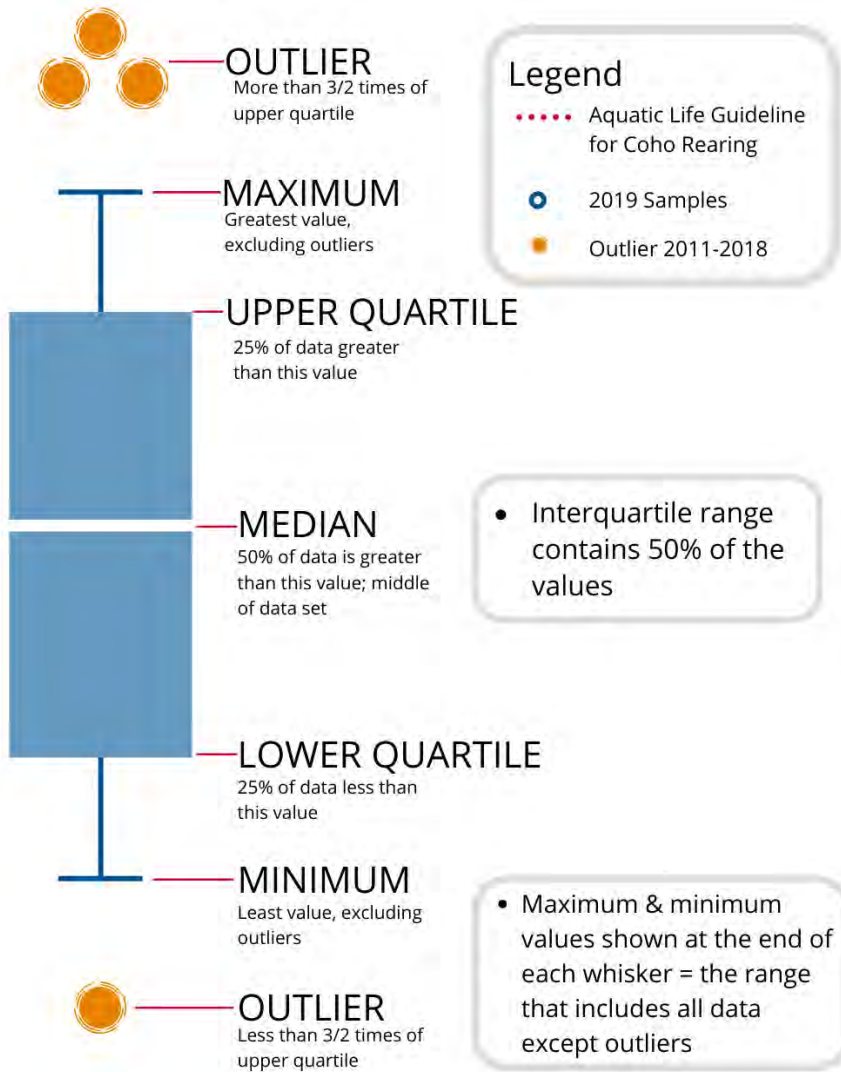
WR5-1 CWMN Sample Sites:

The table below shows the sites monitored by each of the streamkeeper organizations, as well as the number of years and which years a site was sampled. The number of years is important to keep in mind when interpreting the box plots as the plot for each site may contain a slightly different temporal range.

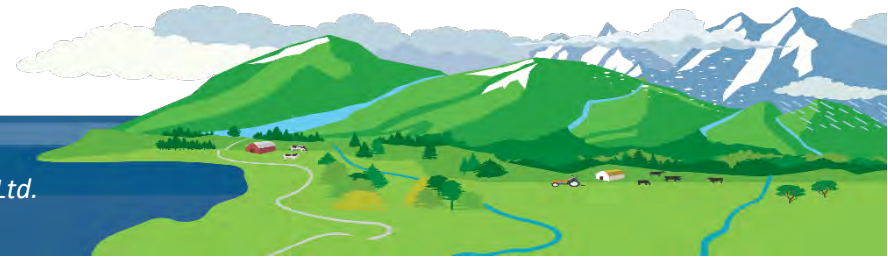
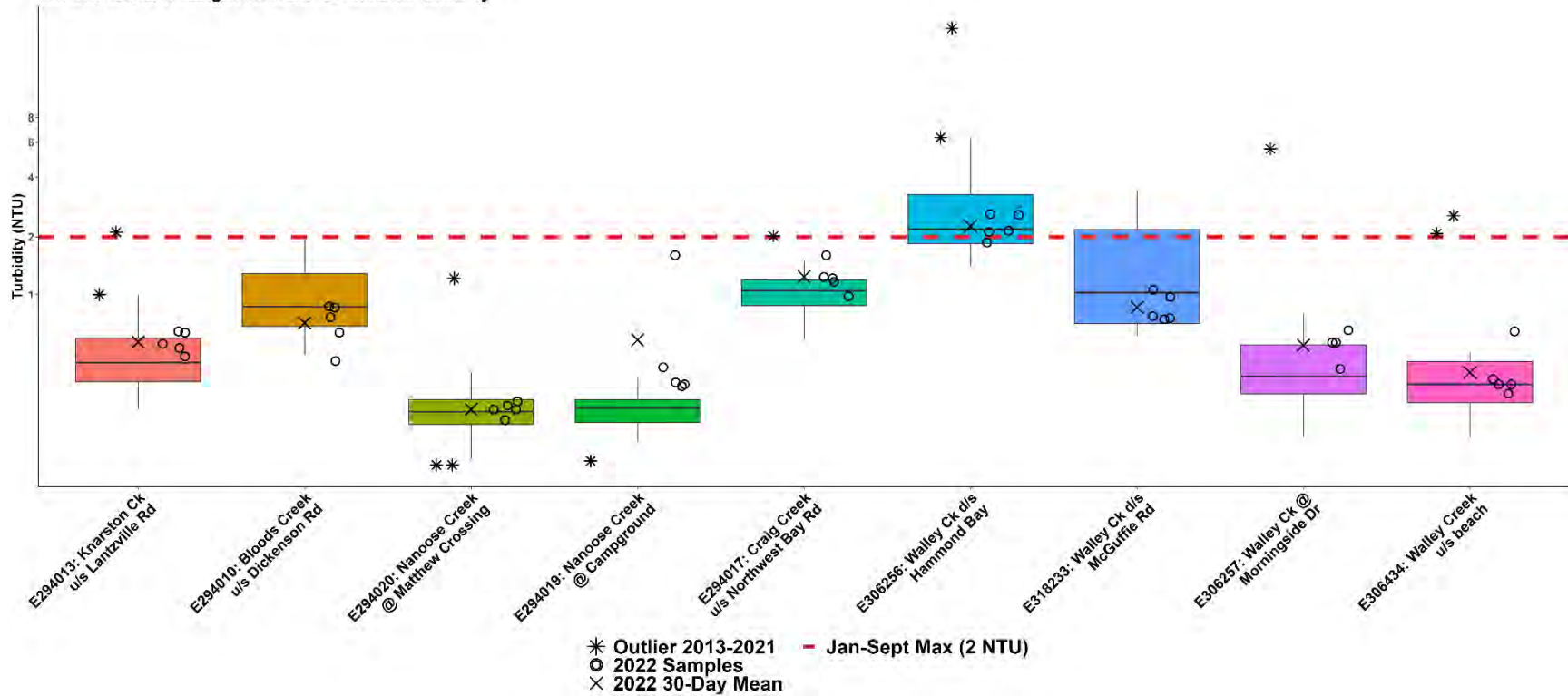
Group	EMS ID	Geographic Description	Years Sampled	Years Monitored
MVIHES	E294010	Bloods Creek just u/s Dickenson Rd	5.5	2017 – present*
MVIHES	E294013	Knarston Ck just u/s Lantzville Rd	5.5	2017 – present*
MVIHES	E294017	Craig Creek just u/s Northwest Bay Rd	1	2022 – present
MVIHES	E294019	Nanoose Creek @ Nanoose Campground	1	2022 – present
MVIHES	E294020	Nanoose Creek @ Matthew Crossing	1	2022 – present
DCS	E290469	Departure Ck @ Neyland Rd (Stn1)	11	2012 – present
DCS	E290470	Josephs Ck (Dept Ck trib) off Newton (Stn 2)	11	2012 – present
DCS	E290471	Departure Ck in Woodstream Park (Stn 3)	11	2012 – present
DCS	E290472	Departure Ck @ outlet (Stn 4)	11	2012 – present
DCS	E290473	Cottle Creek @ Nottingham	11	2012 – present
DCS	E309186	Cottle Creek d/s of Hammond Bay Road	6	2017 – present
DCS	E290475	Cottle Creek @ Stephenson Pt Rd	11	2012 – present
WCS	E306256	Walley Ck d/s Hammond Bay	7	2016 – present
WCS	E306257	Walley Ck @ Morningside Dr	7	2016 – present
WCS	E306434	Walley Creek 20m u/s beach	7	2016 – present
WCS	E318233	Walley Ck 100 m d/s McGuffie Rd	3	2019 – present^



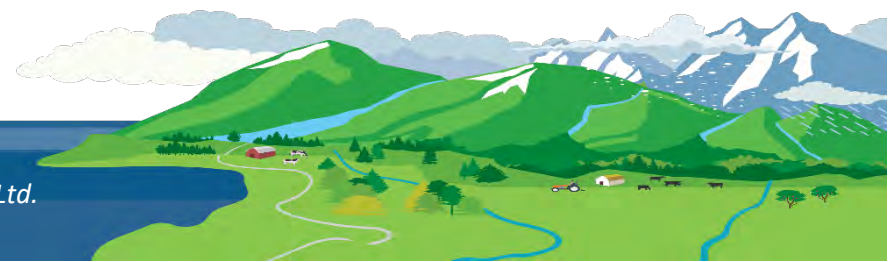
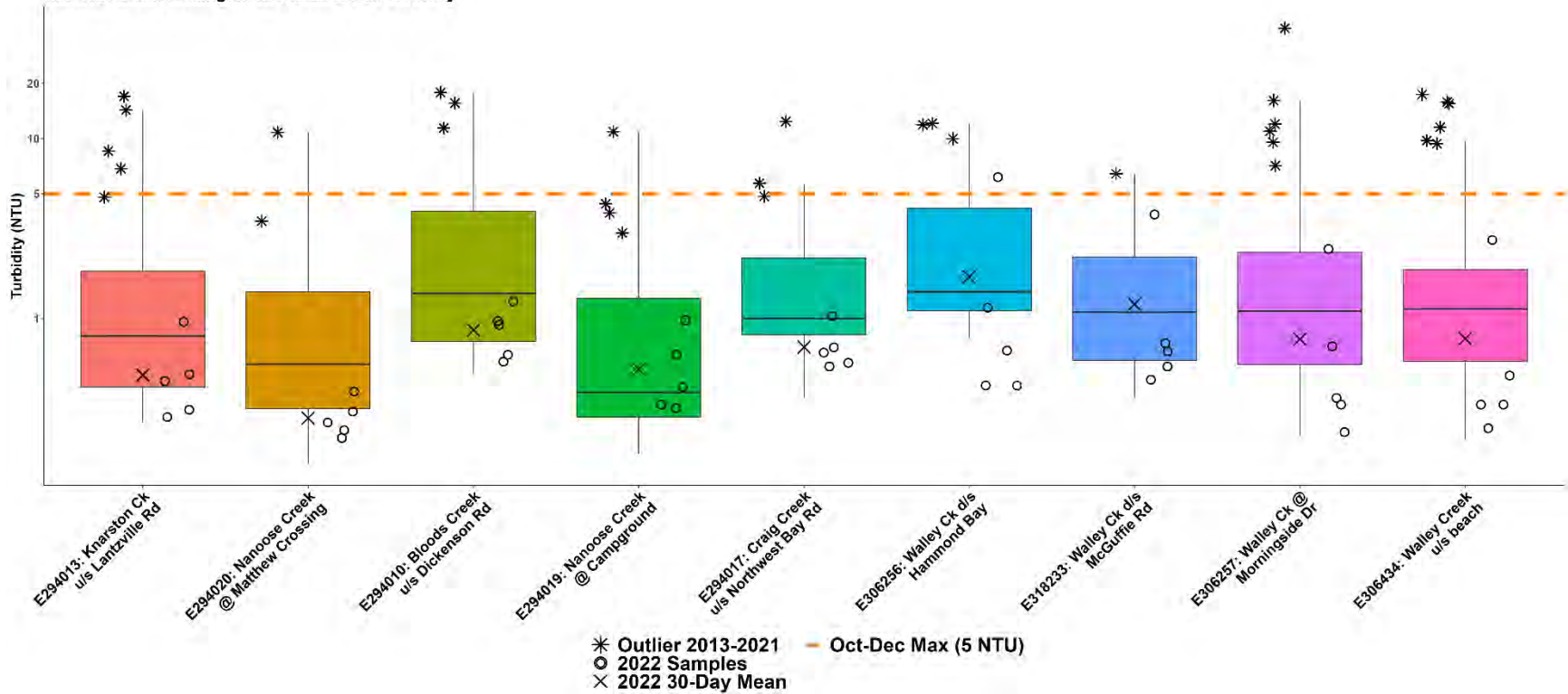
How to Interpret a Box Plot:



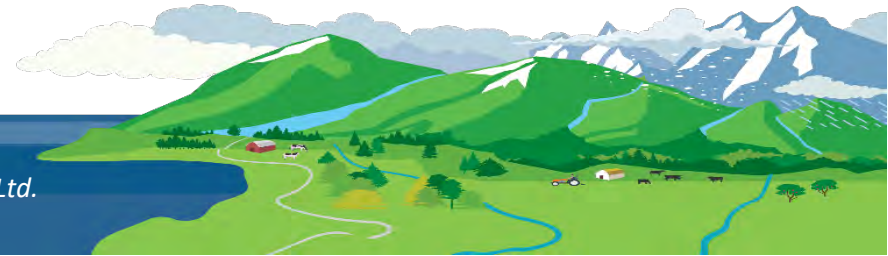
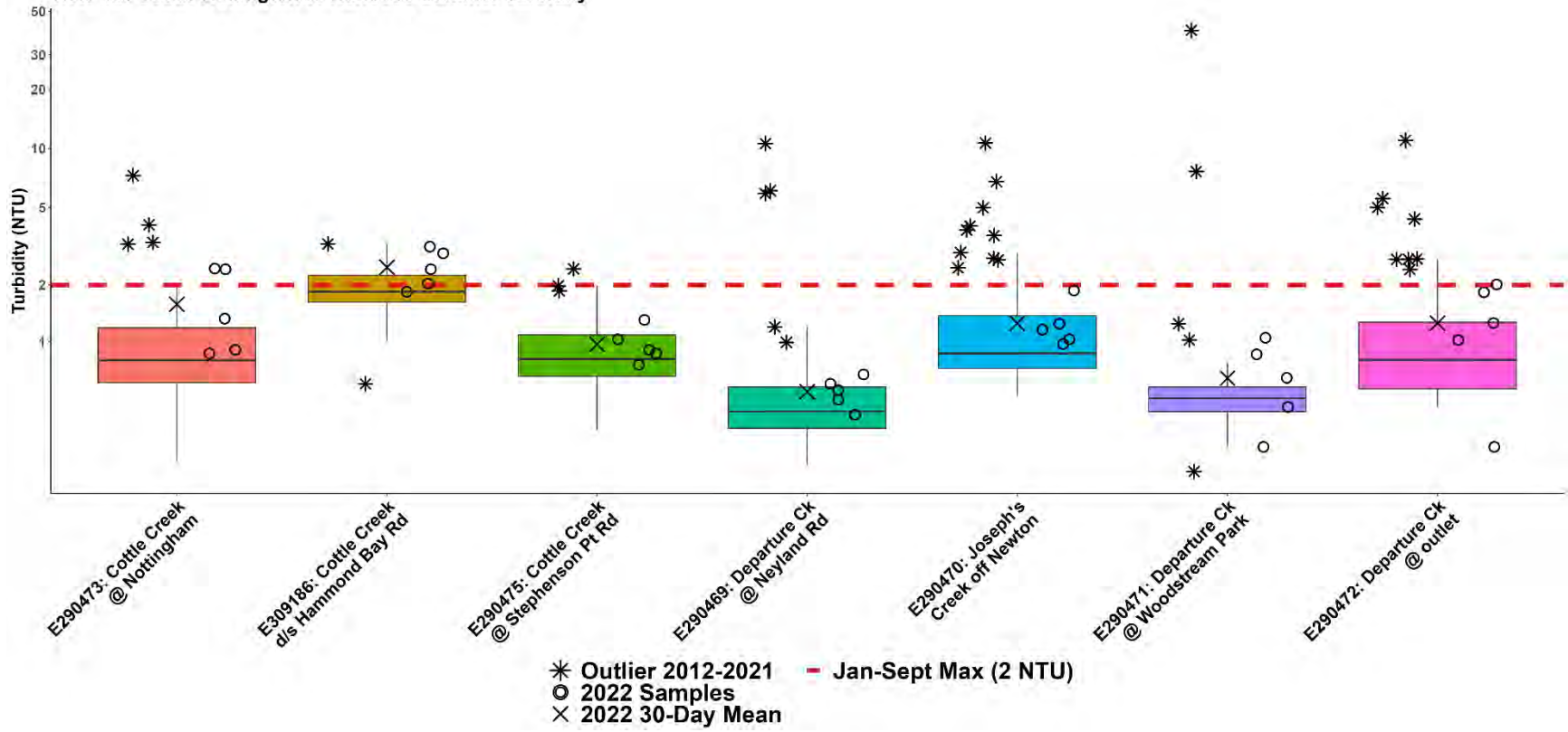
WR5-1a: South Wellington to Nanoose Summer Turbidity



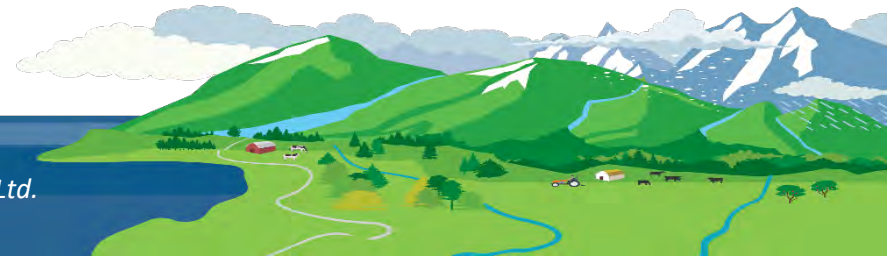
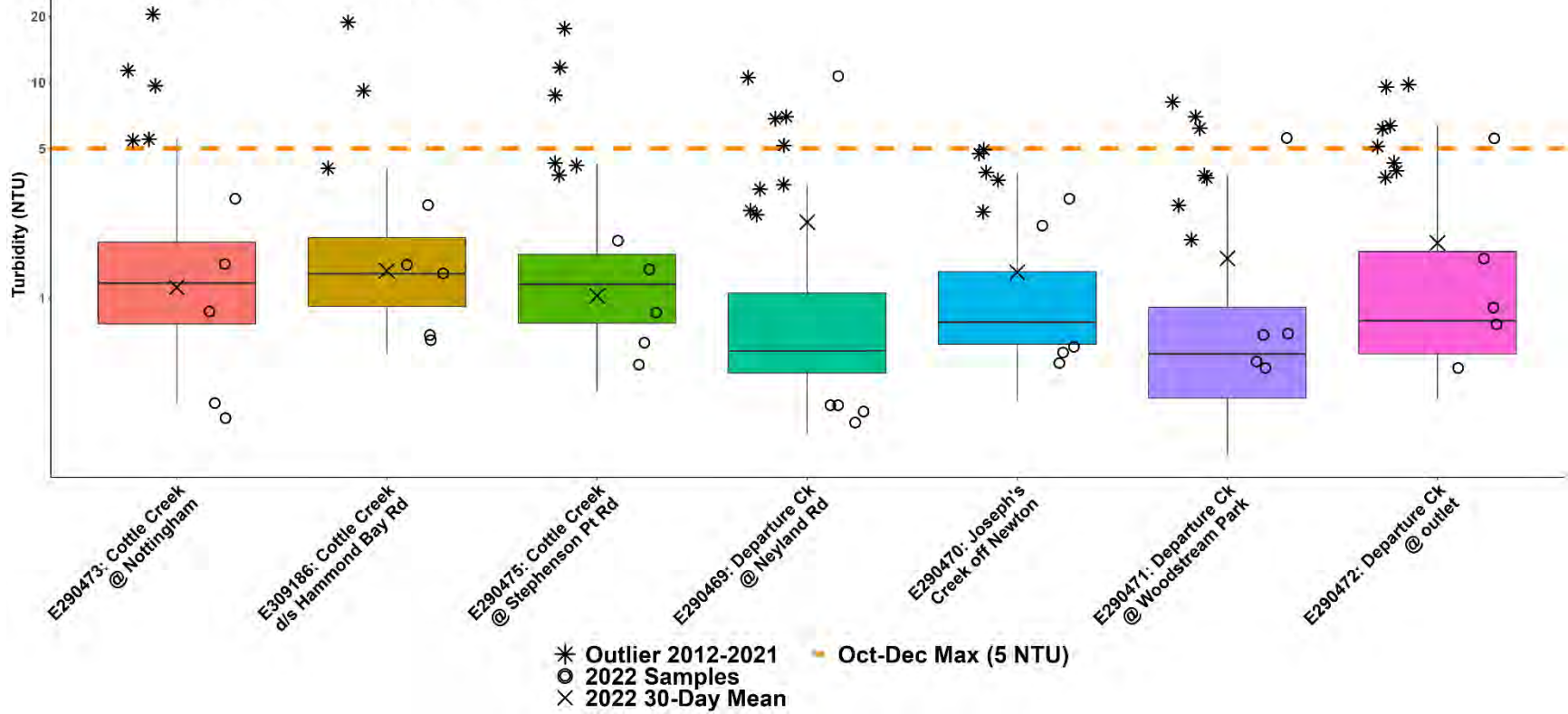
WR5-1a: South Wellington to Nanoose Fall Turbidity



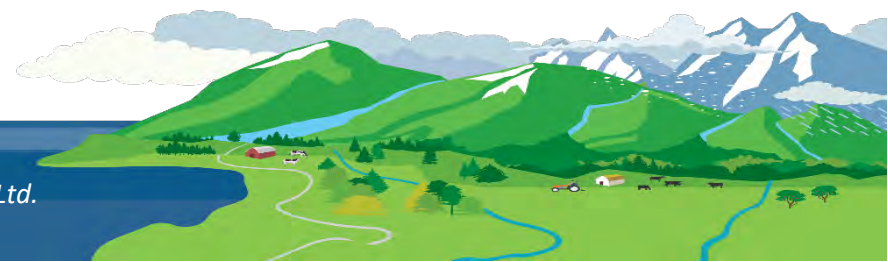
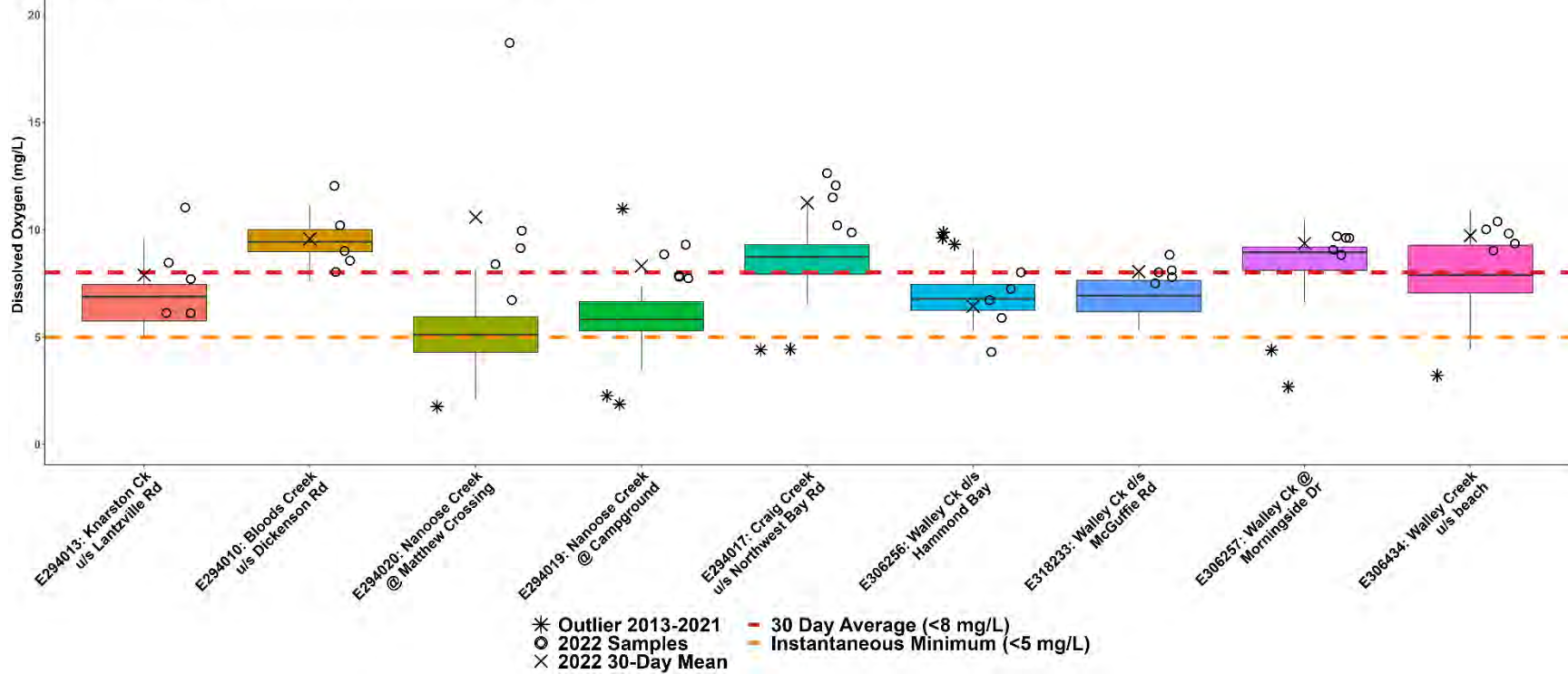
WR5-1b: South Wellington to Nanoose Summer Turbidity



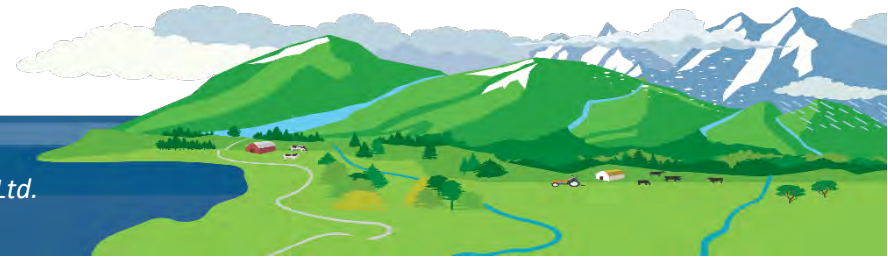
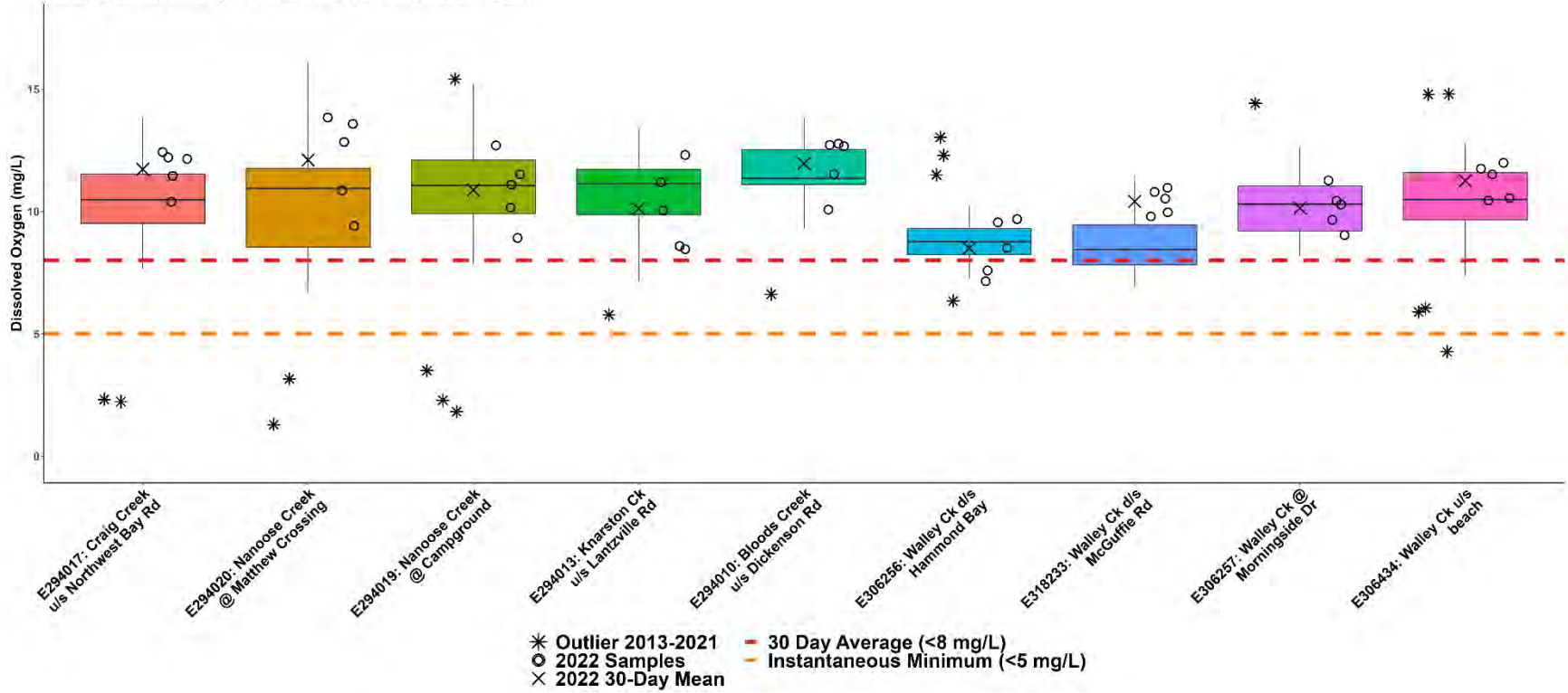
WR5-1b: South Wellington to Nanoose Fall Turbidity



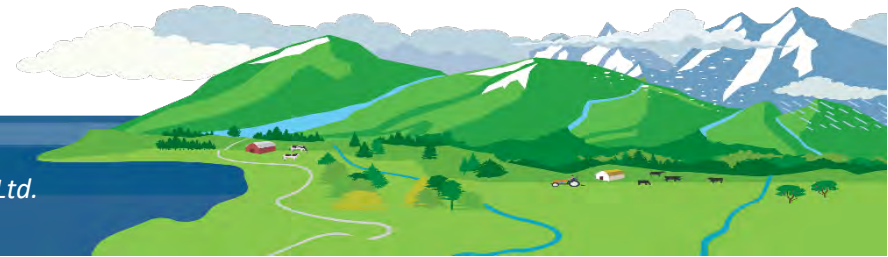
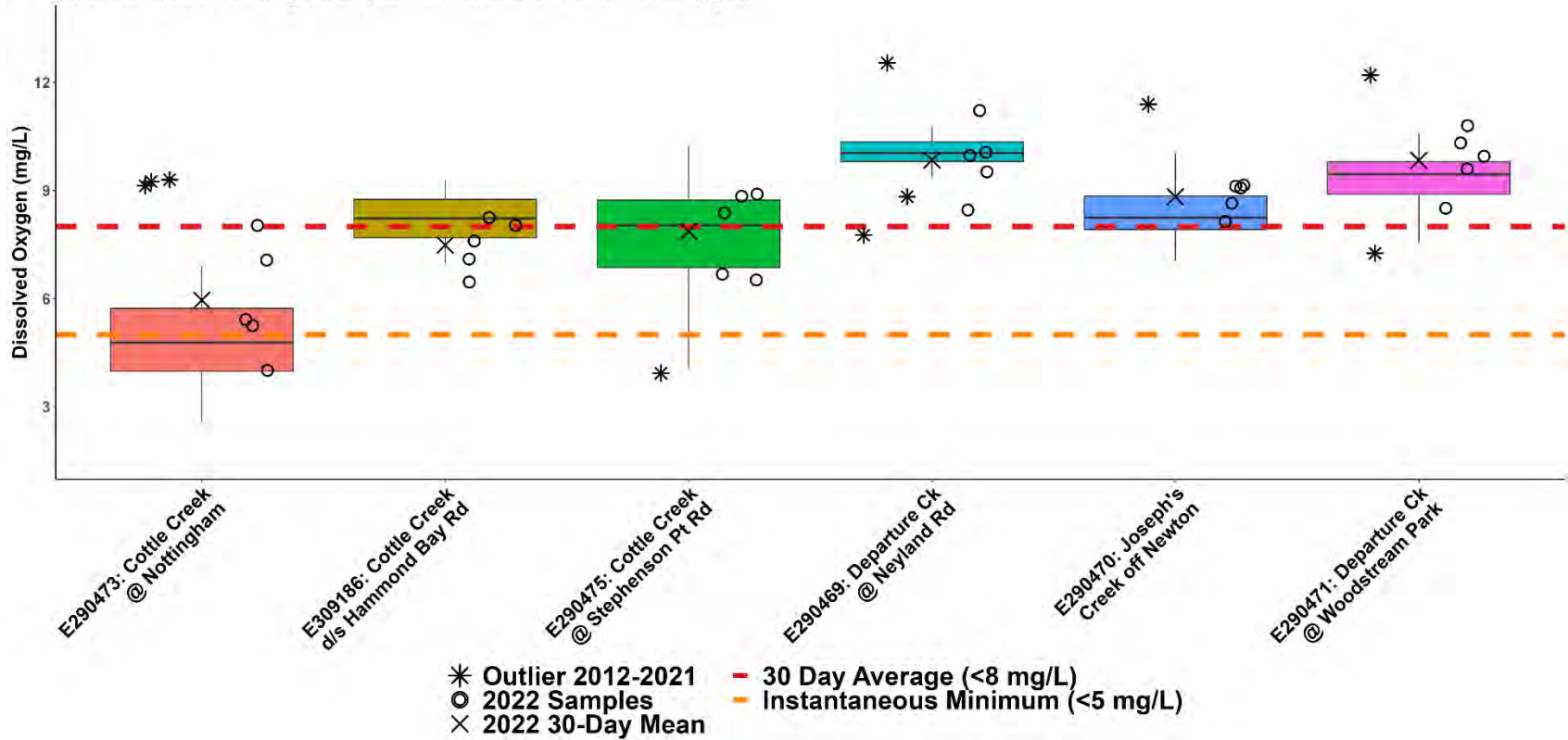
WR5-1a: South Wellington to Nanoose Summer Dissolved Oxygen



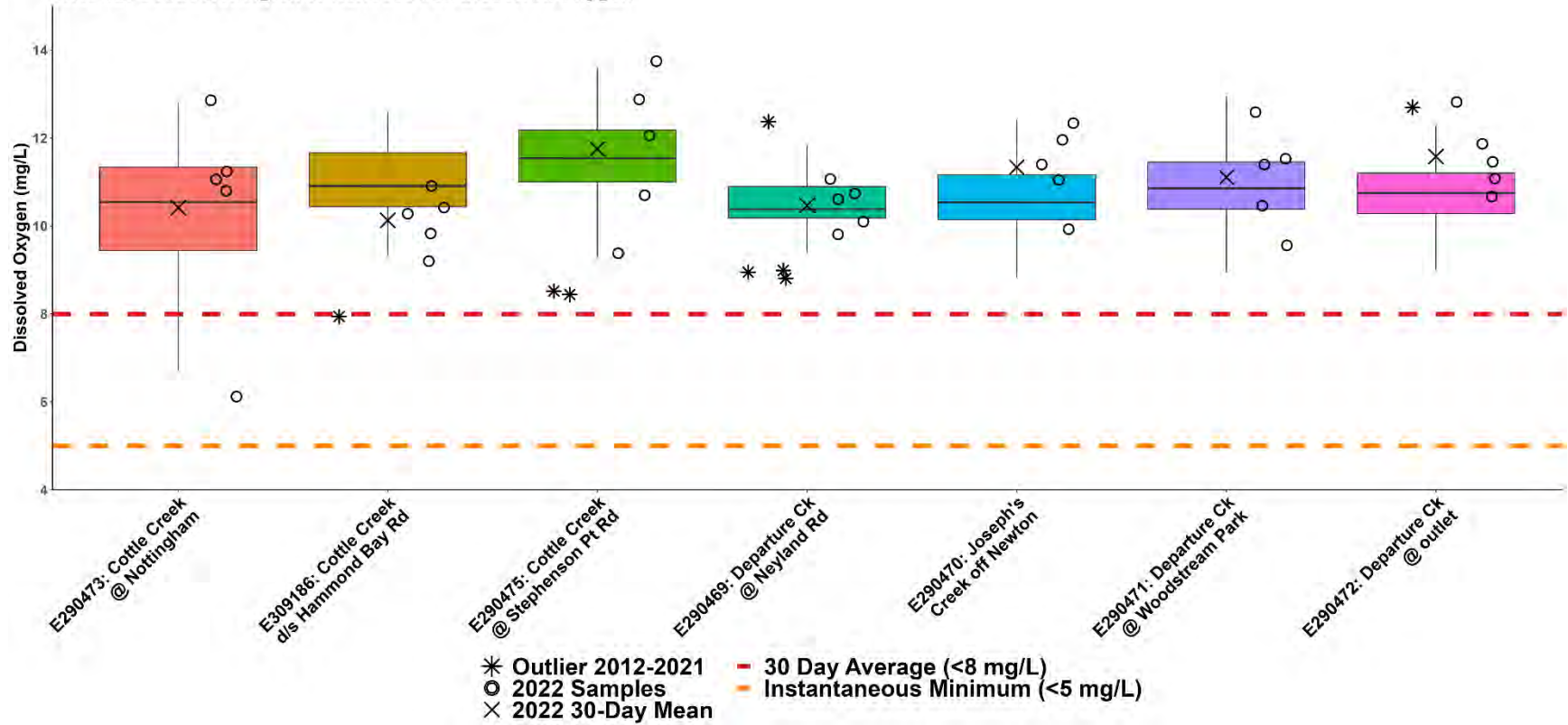
WR5-1a: South Wellington to Nanoose Fall Dissolved Oxygen



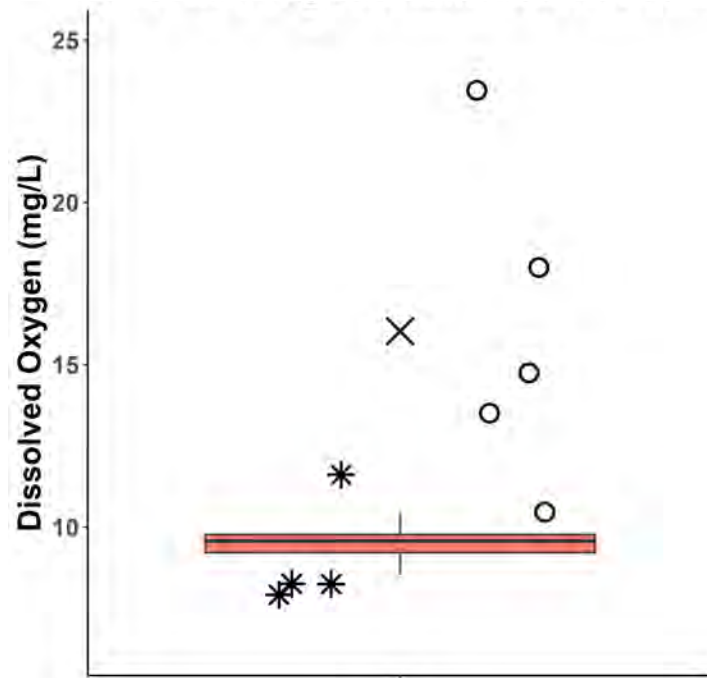
WR5-1b: South Wellington to Nanoose Summer Dissolved Oxygen



WR5-1b: South Wellington to Nanoose Fall Dissolved Oxygen



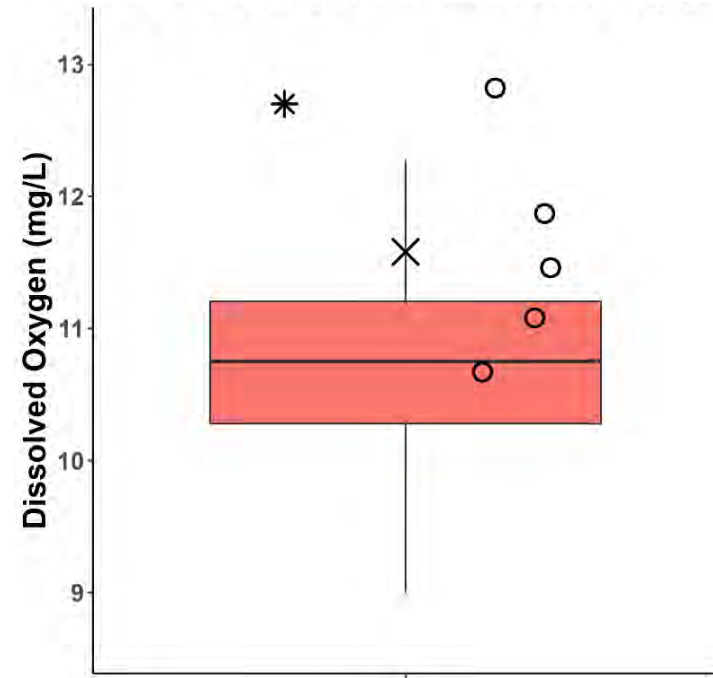
Sites with High Summer Dissolved Oxygen



E290472 (WR5-1b):
Departure Ck @ outlet

- * Outlier 2012-2021
- 2022 Samples
- × 2022 30-Day Mean

Sites with High Fall Dissolved Oxygen

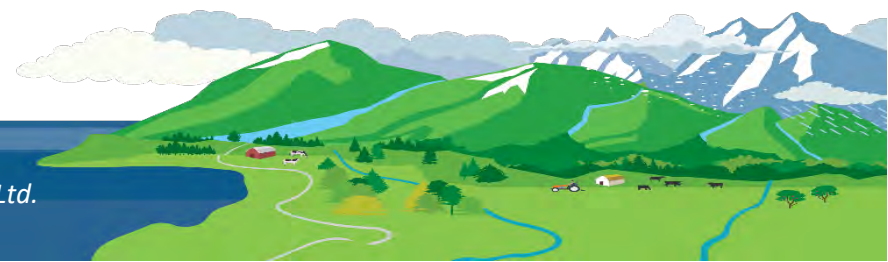
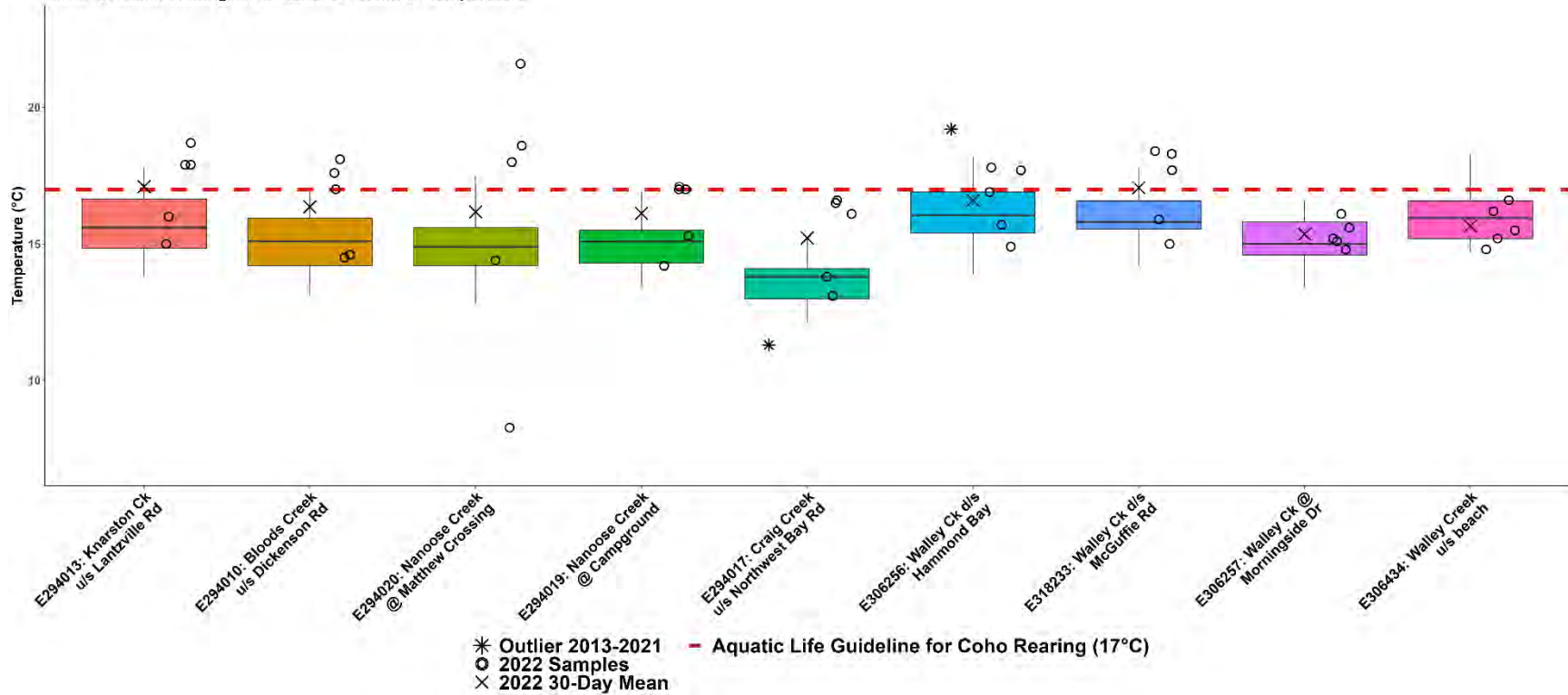


E290472 (WR5-1b):
Departure Ck @ outlet

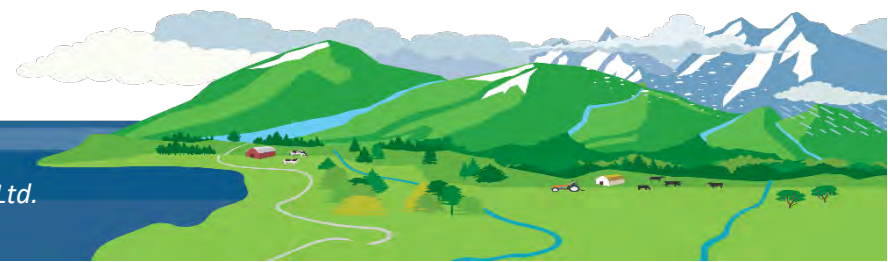
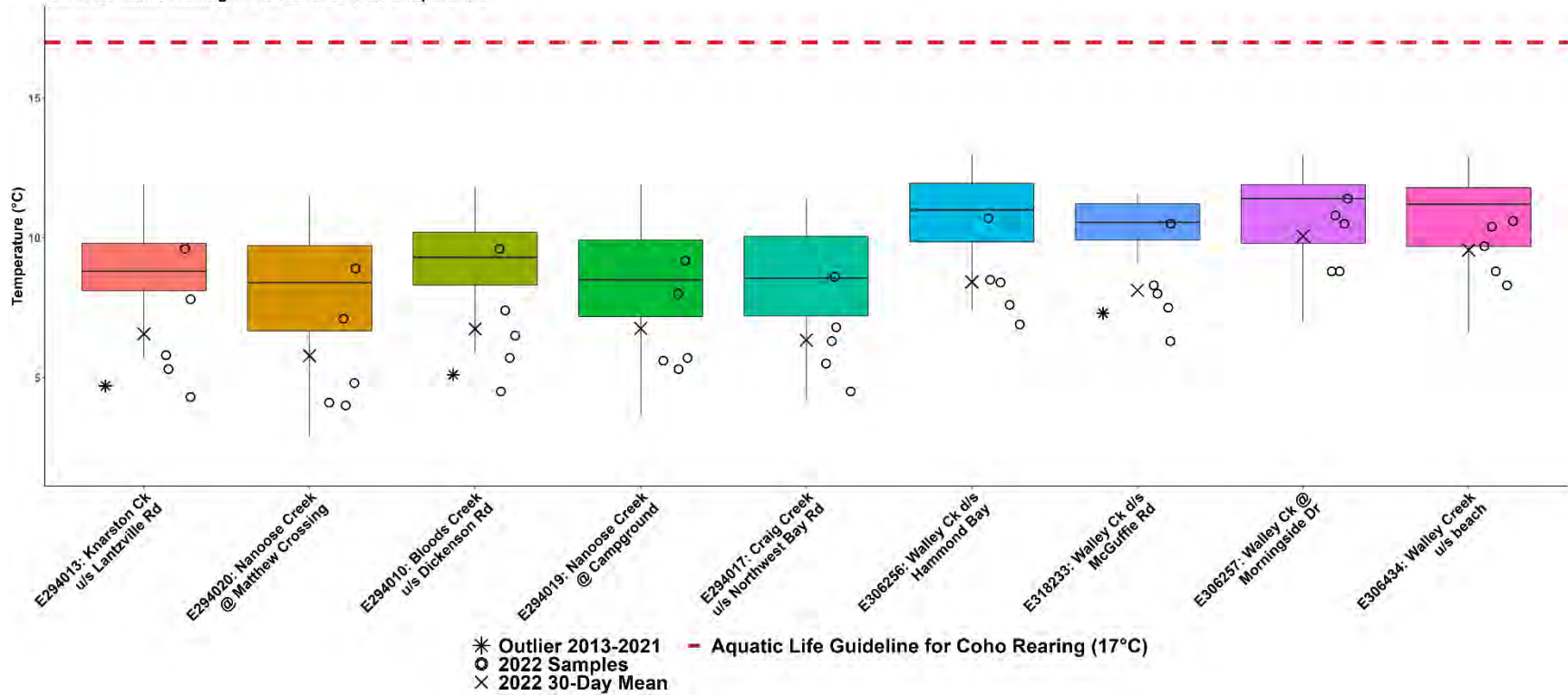
- * Outlier 2012-2021
- 2022 Samples
- × 2022 30-Day Mean



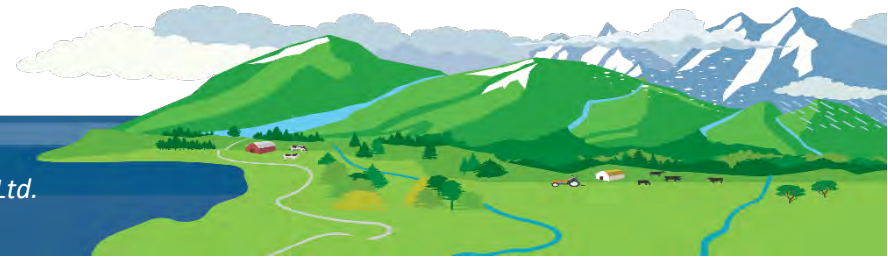
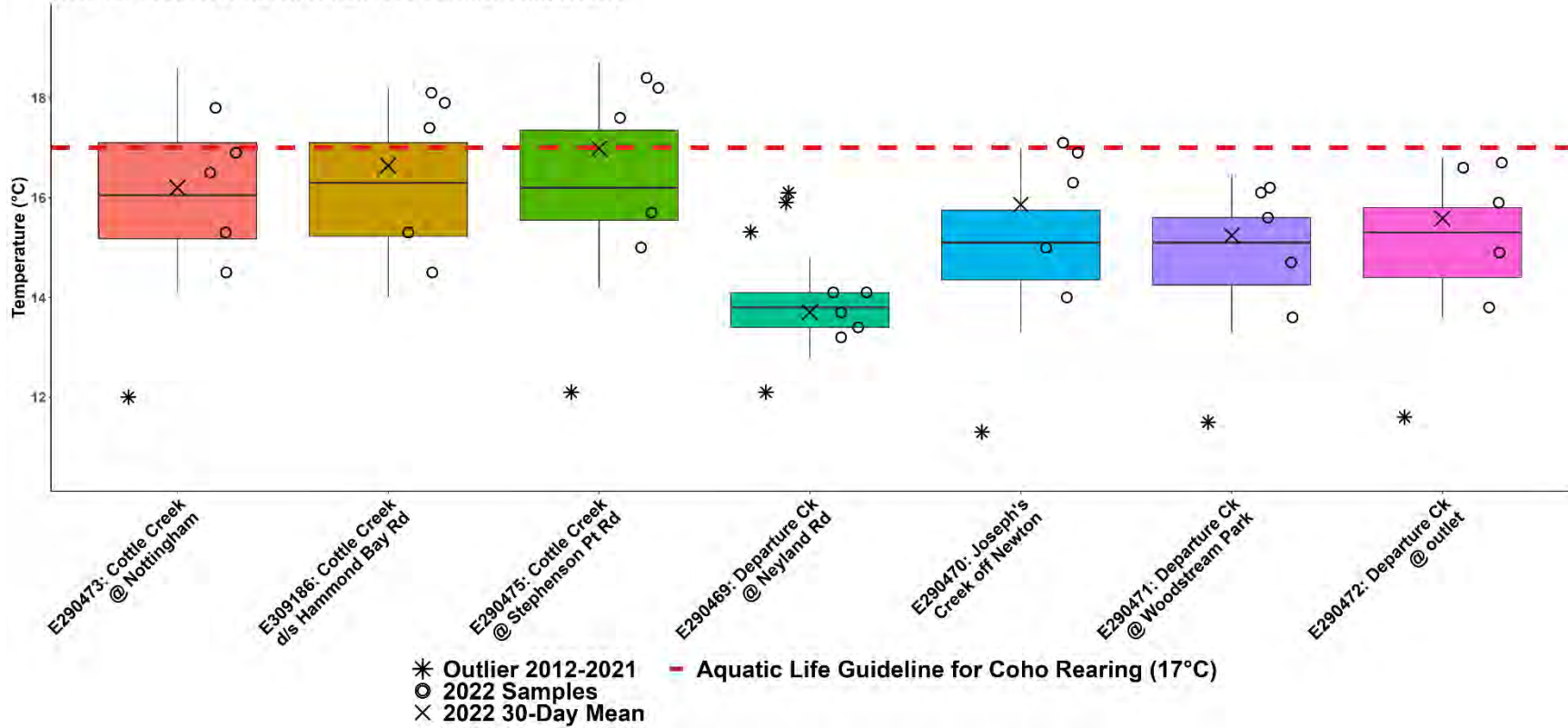
WR5-1a: South Wellington to Nanoose Summer Temperature



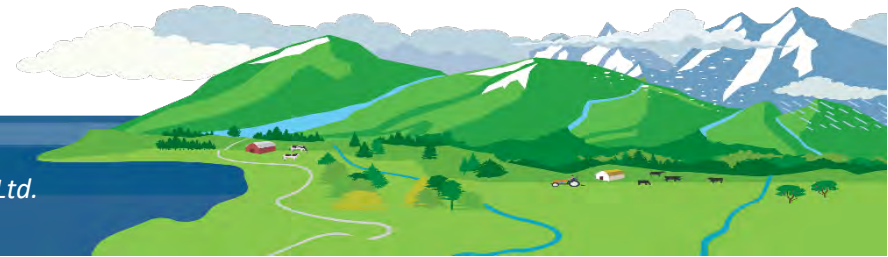
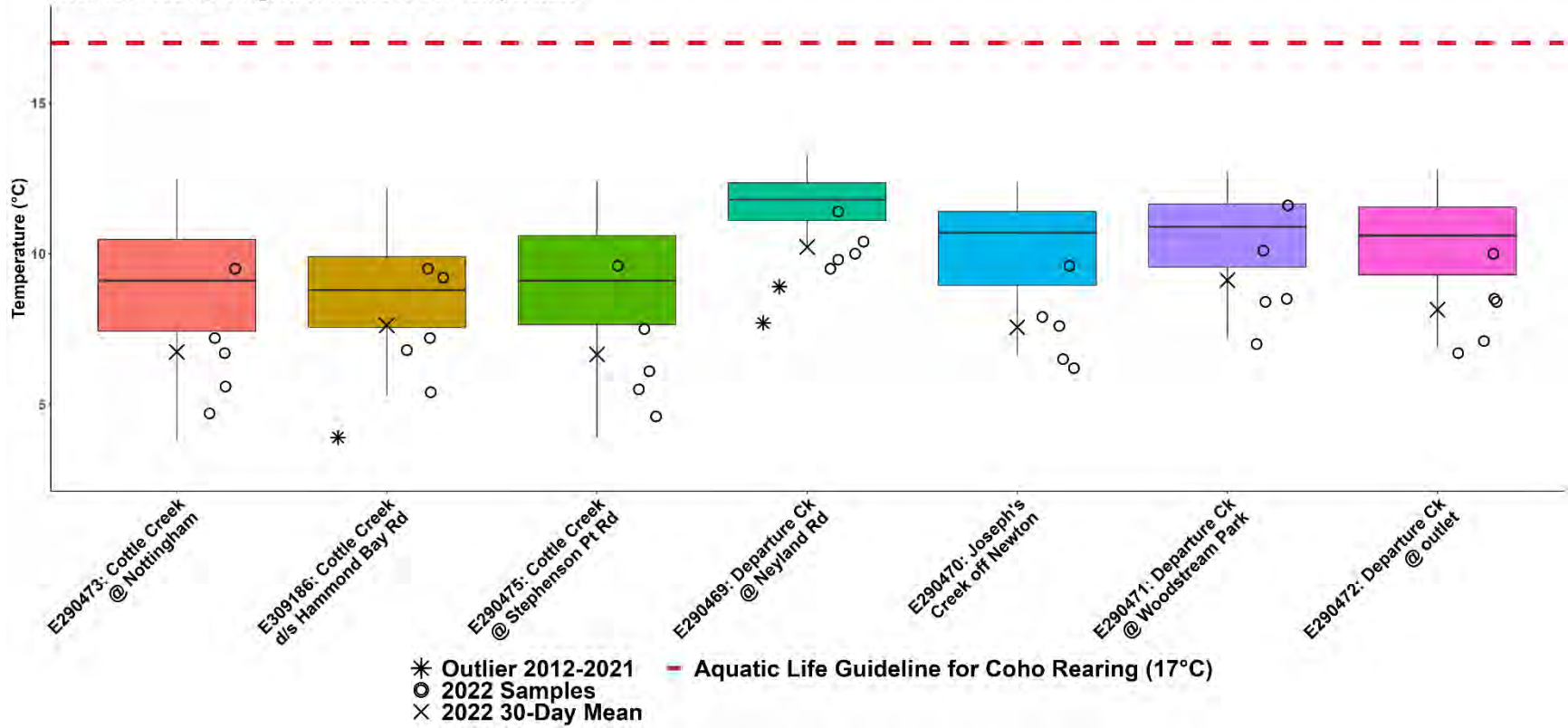
WR5-1a: South Wellington to Nanoose Fall Temperature



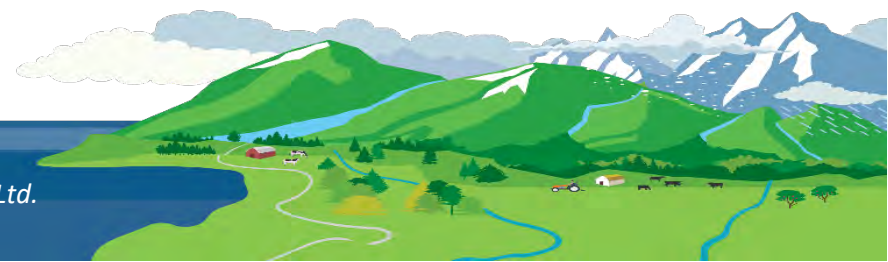
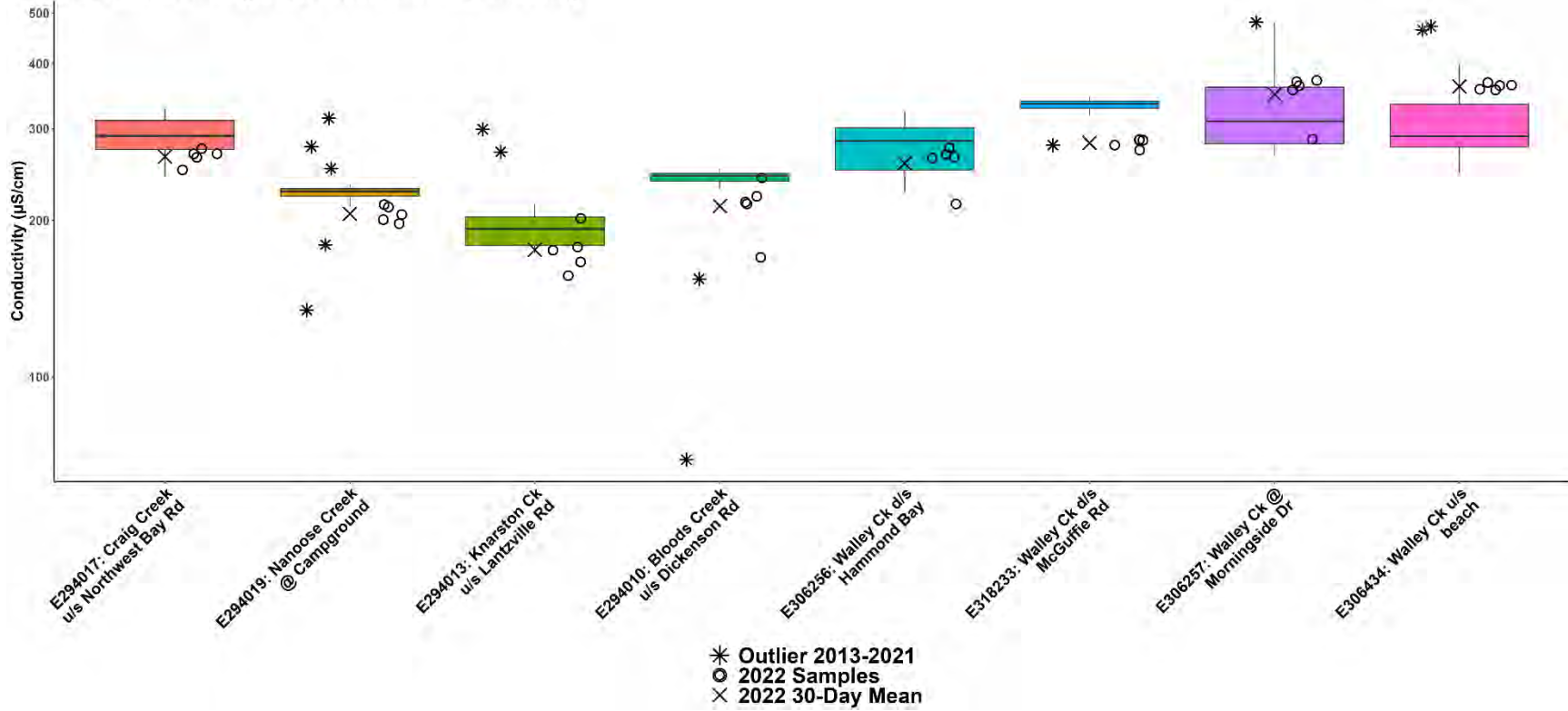
WR5-1b: South Wellington to Nanoose Summer Temperature

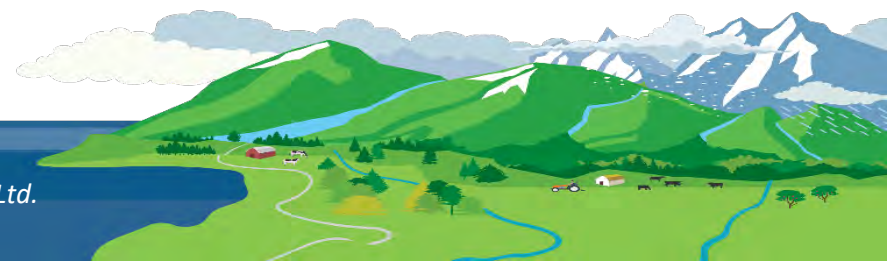
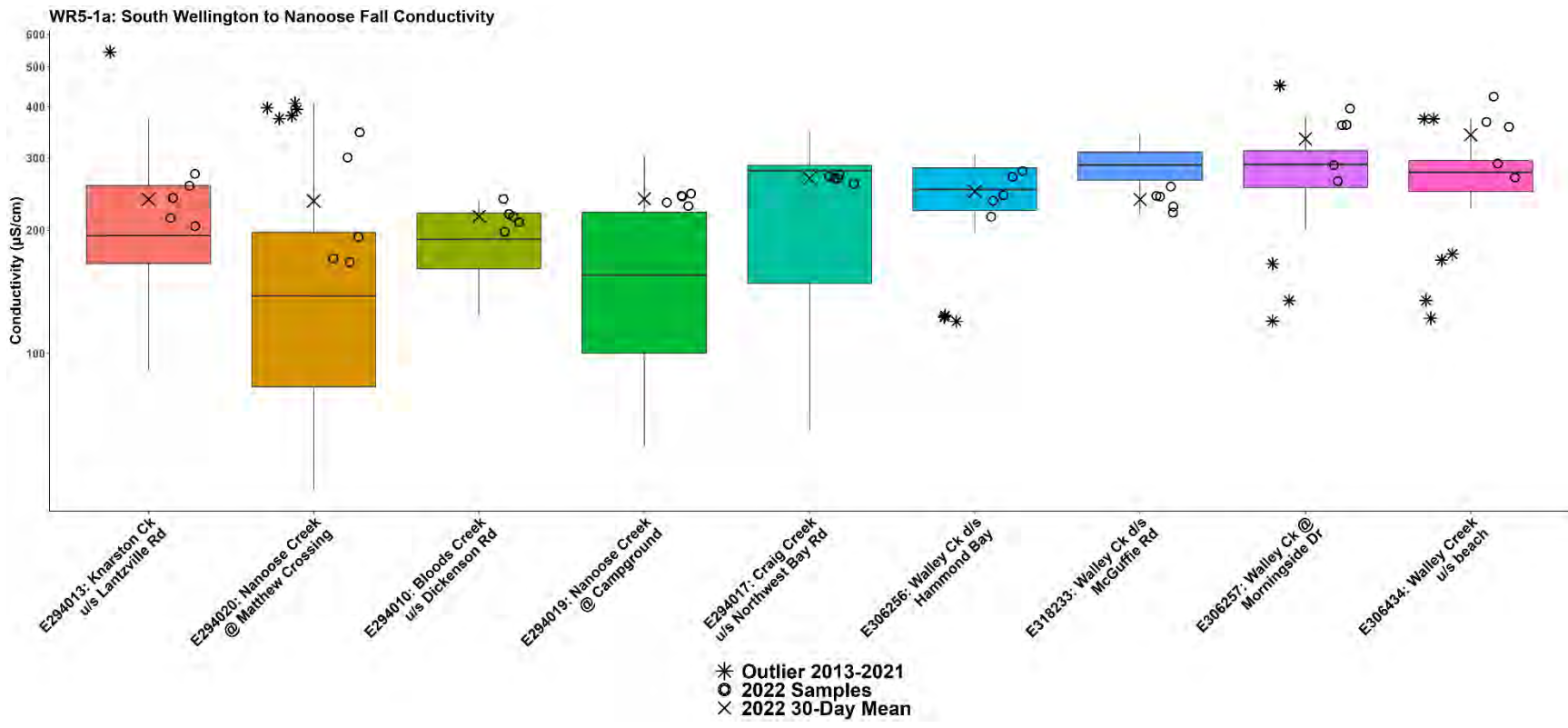


WR5-1b: South Wellington to Nanoose Fall Temperature

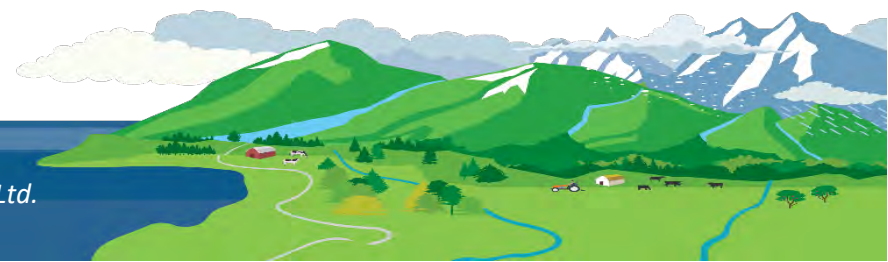
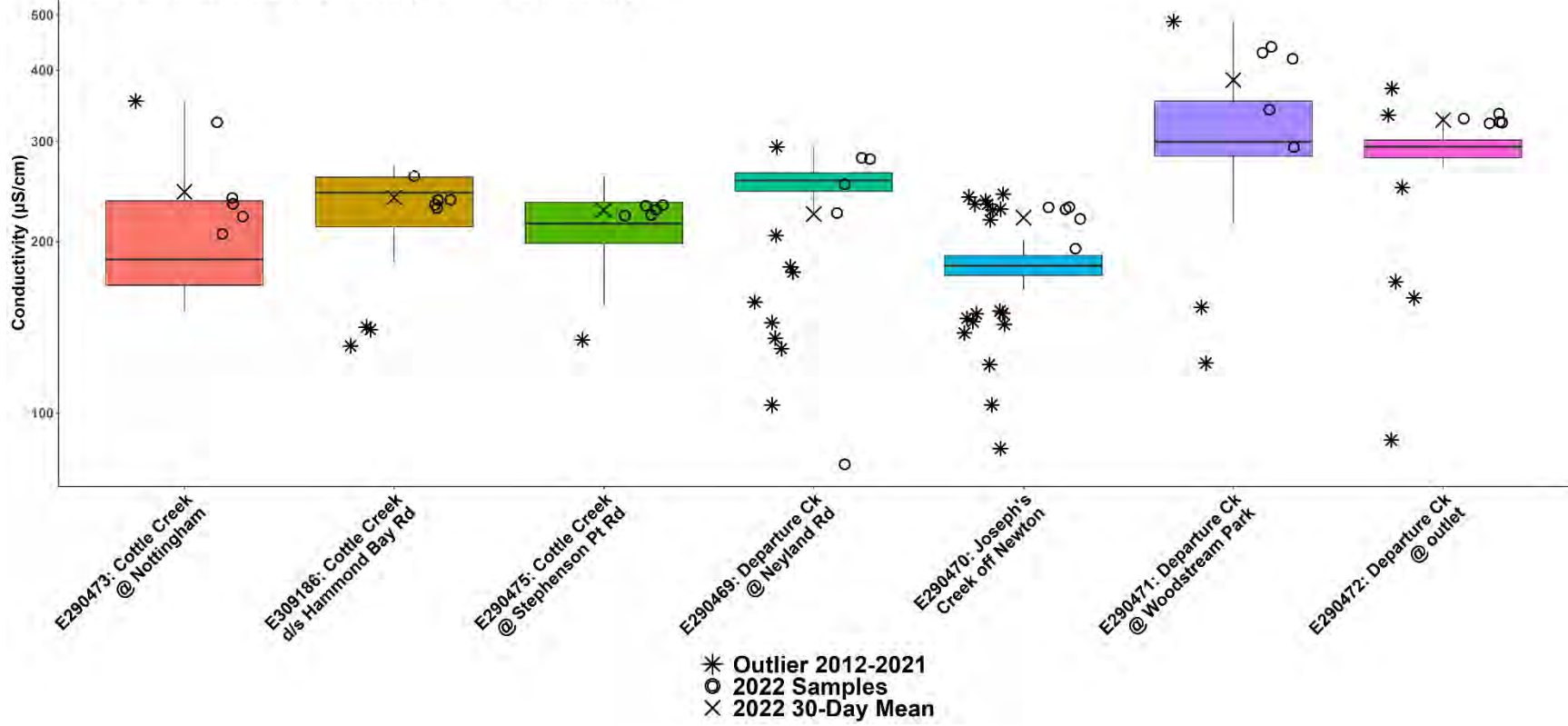


WR5-1a: South Wellington to Nanoose Summer Conductivity

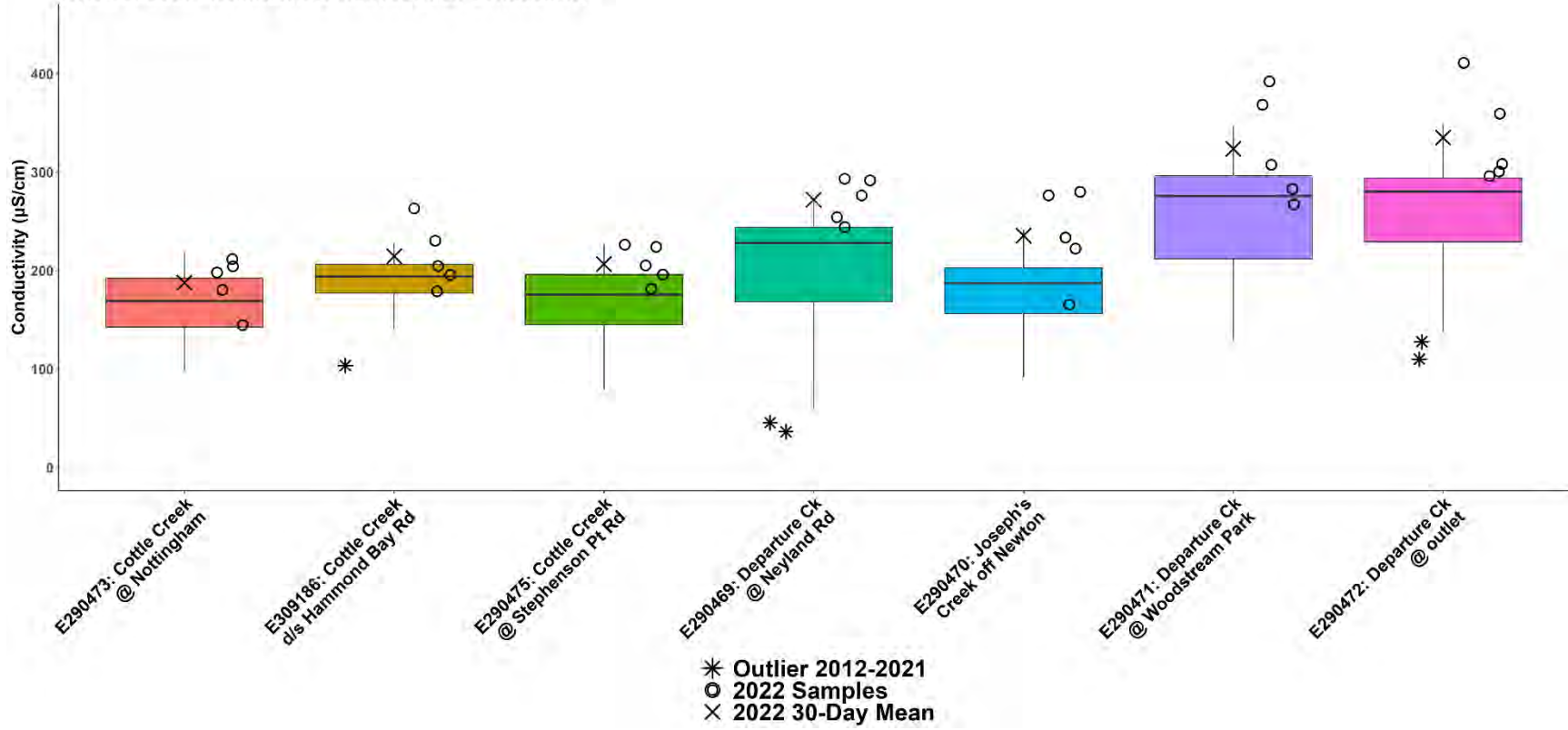


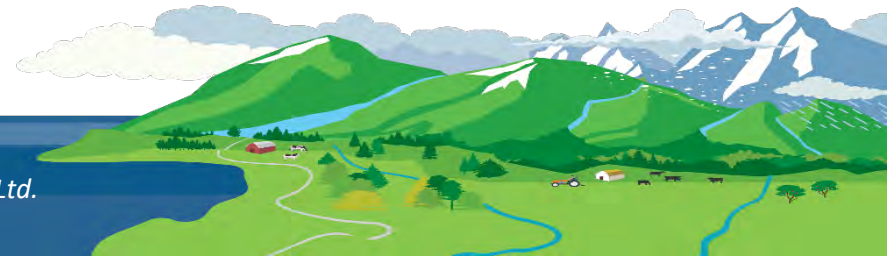
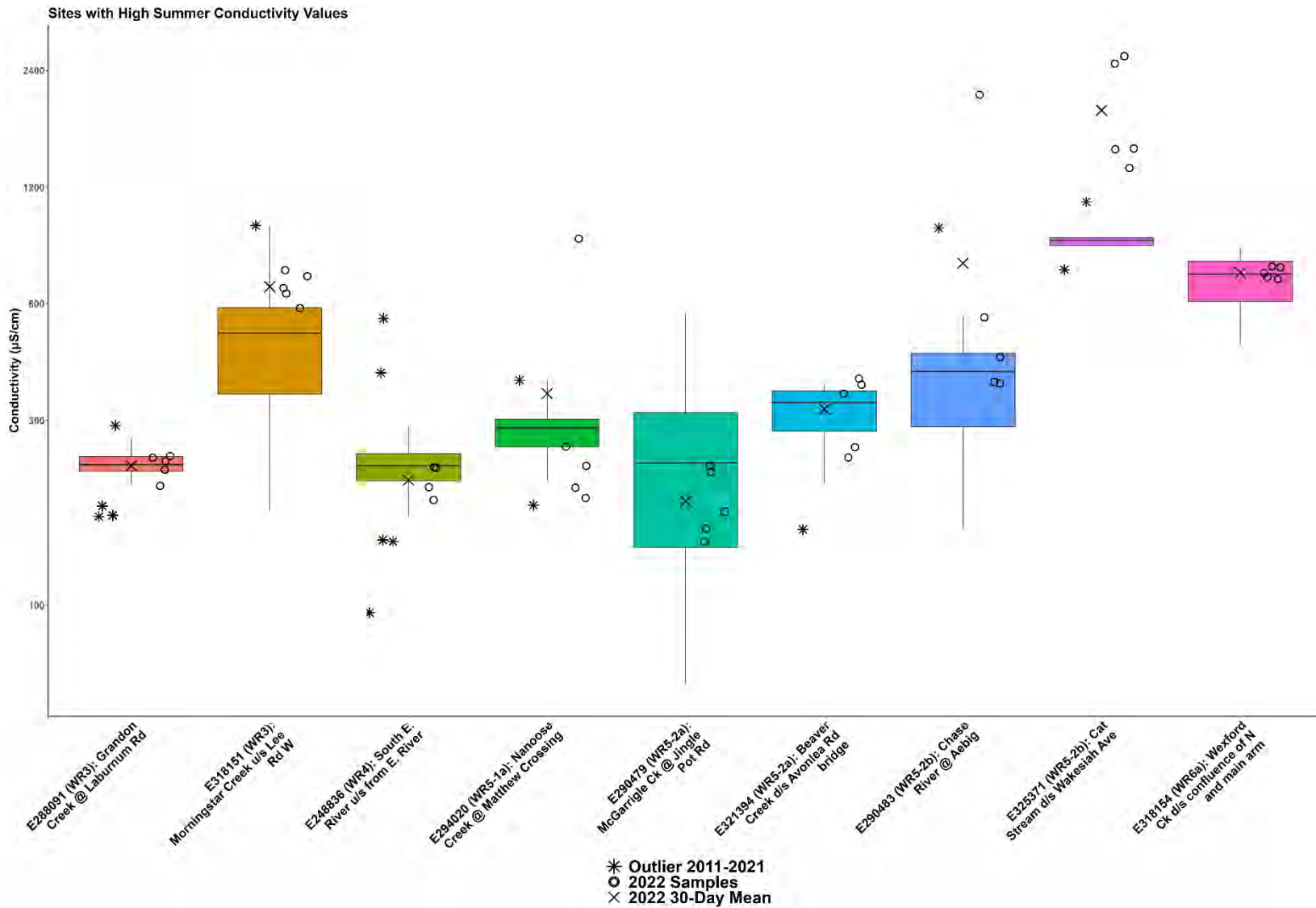


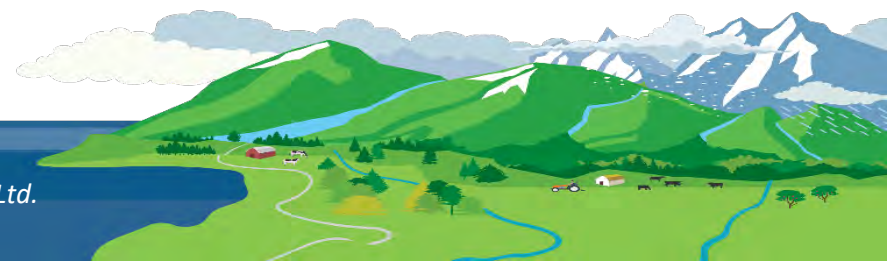
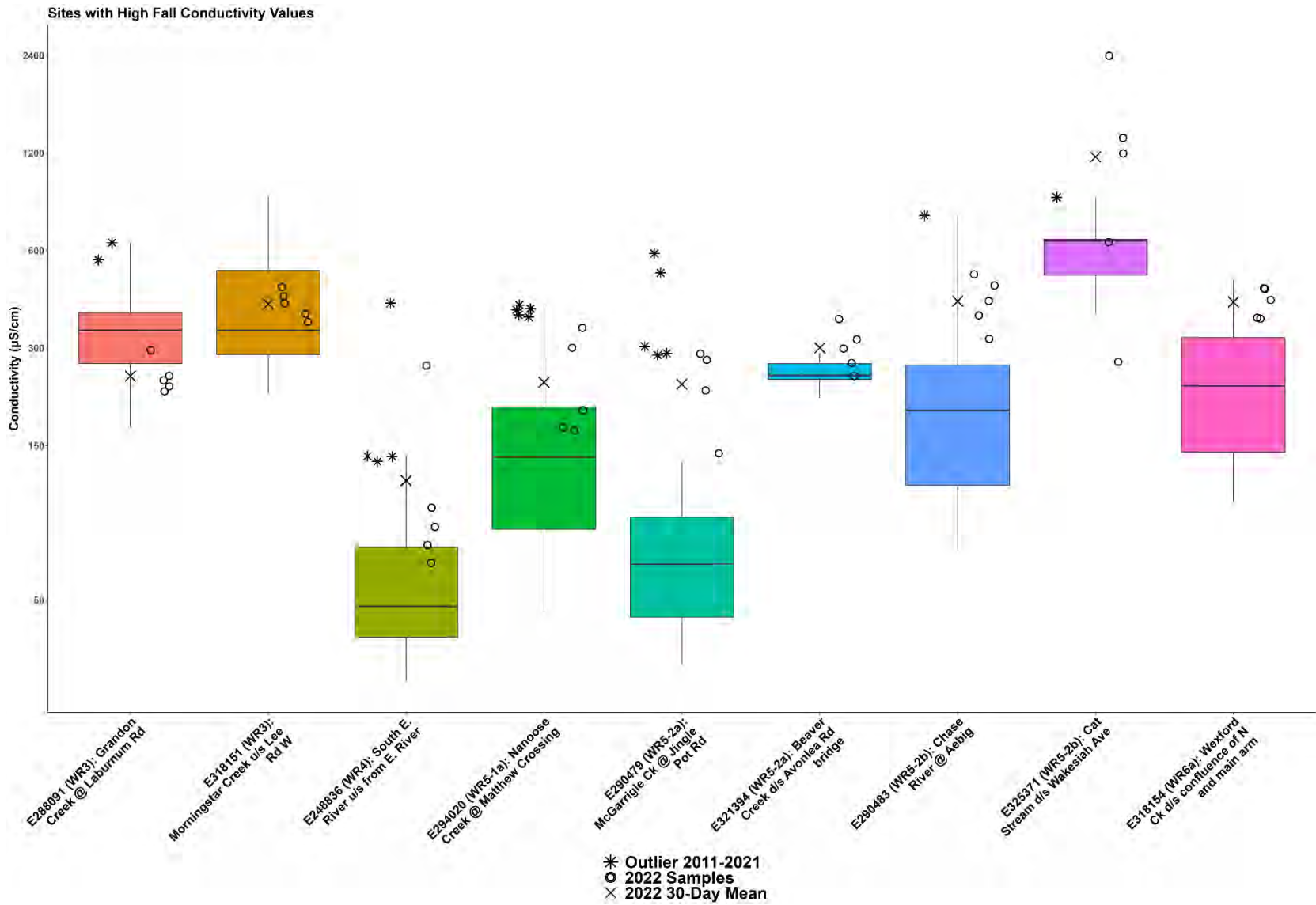
WR5-1b: South Wellington to Nanoose Summer Conductivity



WR5-1b: South Wellington to Nanoose Fall Conductivity









**MVIHES Nanoose Group
2022 Monitoring Sites**

REGIONAL DISTRICT OF NANOHO

Status	Community Park
Active	Regional Park
Not Active	Provincial Park
Watercourse (approximate location)	2020 Air Photo

0 500 1,000 2,000
Meters

September 2022

