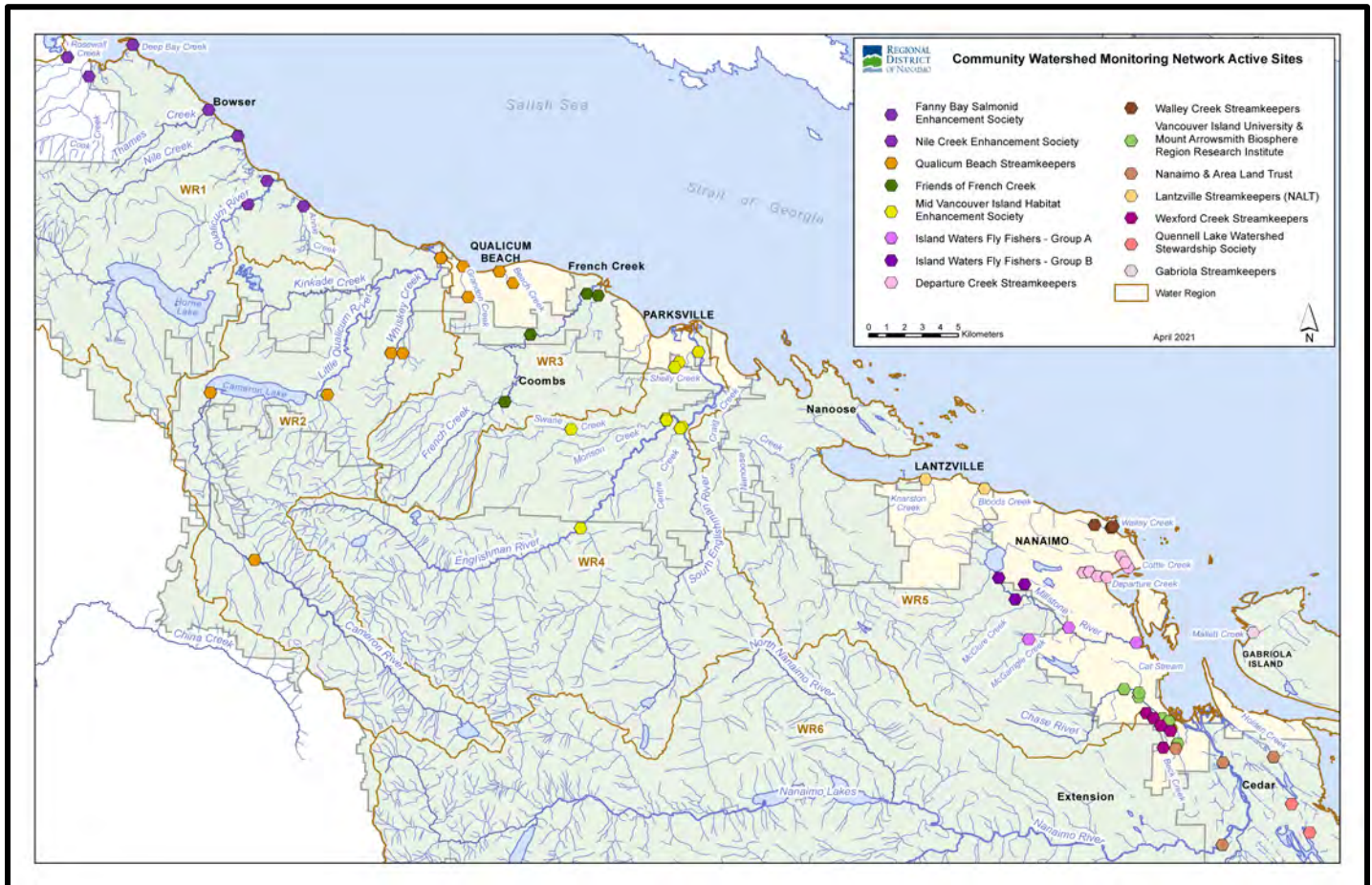


Community Watershed Monitoring Network 2021 Results by Water Region



Included in Water Region (WR) 3 package:

1. CWMN WR3 sample sites
2. How to interpret a box plot
3. Box Plot Comparison – 2021 data to previous years: *displayed by parameter (Temperature, Dissolved Oxygen, Turbidity, Conductivity) & sample period (summer, fall)*
4. QBSS CWMN map of sample sites
5. FFCCS CWMN map of sample sites



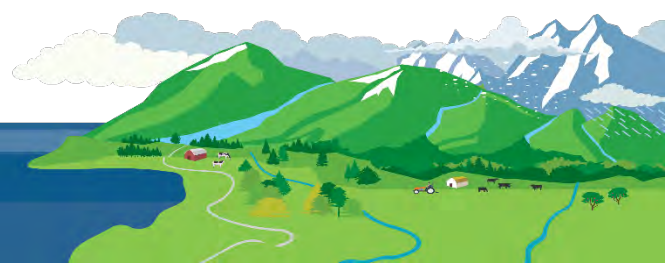
Water Region 3
sampled by:
**Qualicum Beach Streamkeeper
Society (QBSS)
&
Friends of French Creek
Conservation Society (FFCCS)**



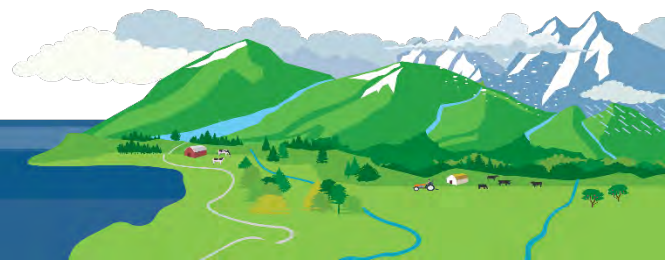
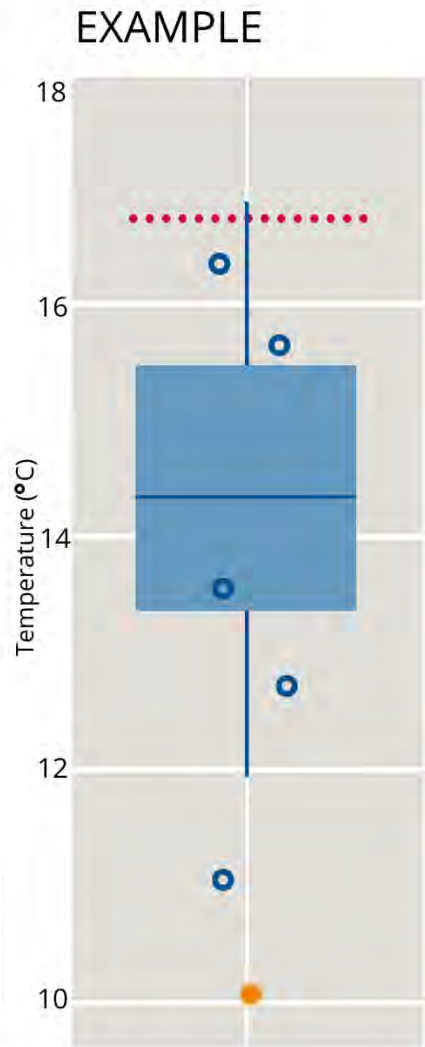
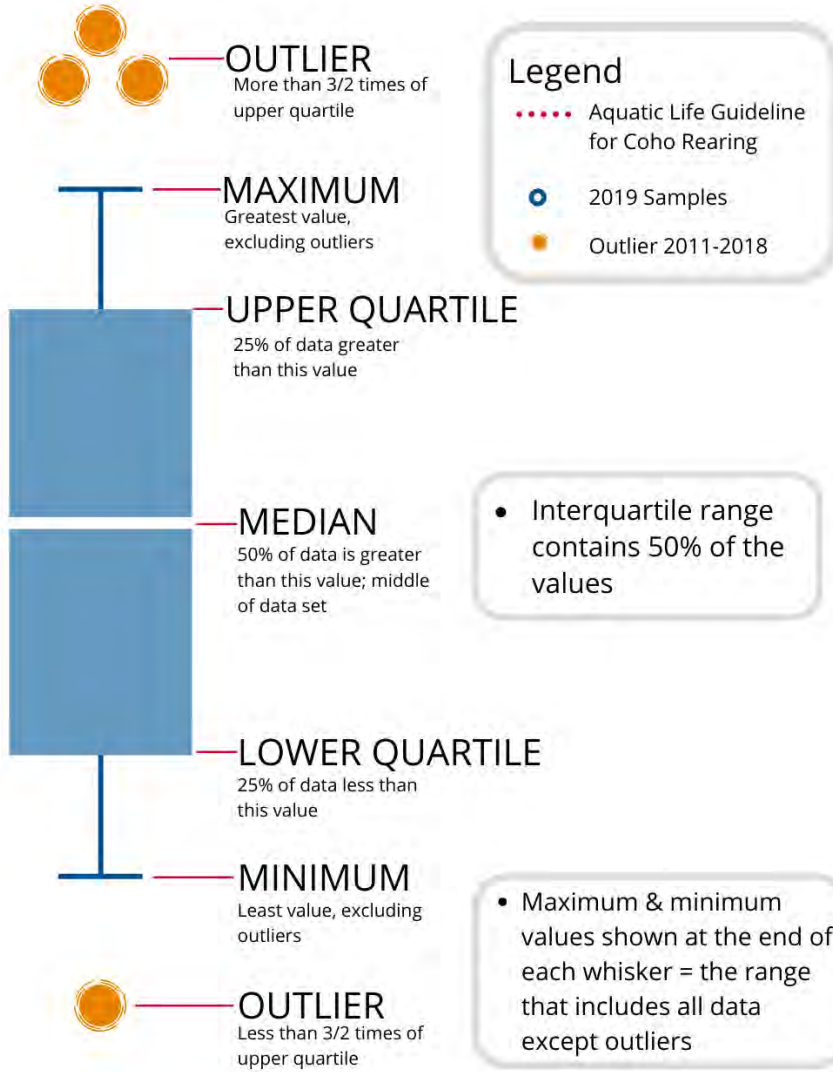
WR3 CWMN Sample Sites:

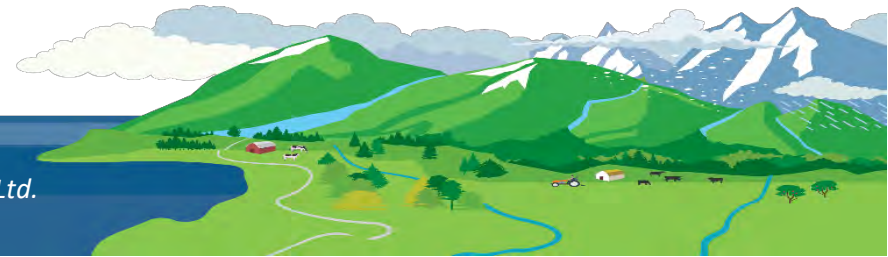
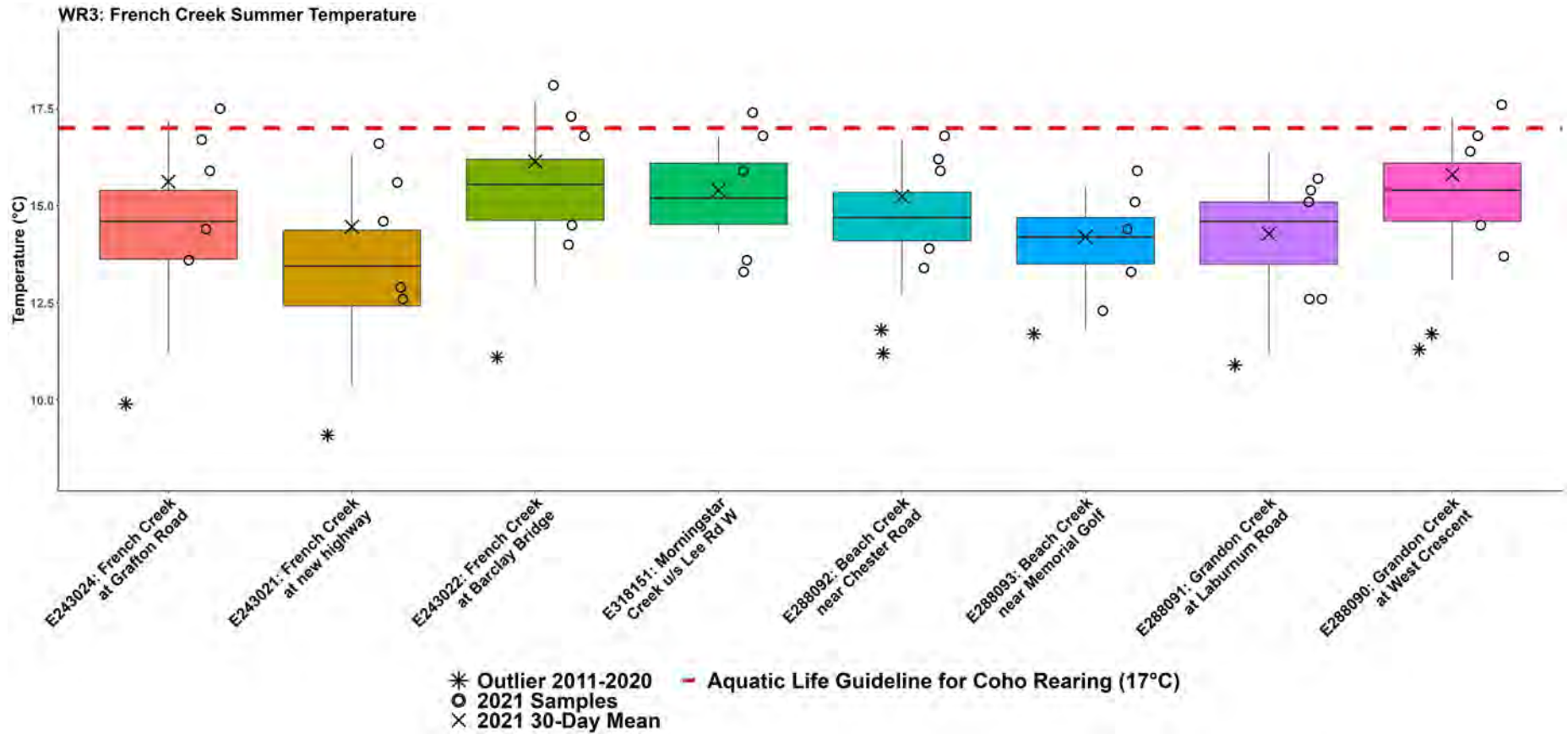
The table below shows the sites monitored by each of the streamkeeper organizations, as well as the number of years and which years a site was sampled. The number of years is important to keep in mind when interpreting the box plots as the plot for each site may contain a slightly different temporal range.

Group	EMS ID	Geographic Description	Years Sampled	Years Monitored
QBS	E288091	Grandon Creek at Laburnum Road	11	2011 – present
QBS	E288090	Grandon Creek at West Crescent (Caissons)	11	2011 – present
QBS	E288092	Beach Creek near Chester Road at Hemsworth Road	11	2011 – present
QBS	E288093	Beach Creek near Memorial Golf Course Pond	11	2011 – present
FFCCS	E243024	French Creek at Grafton Road	11	2011 – present
FFCCS	E243021	French Creek at new highway	11	2011 – present
FFCCS	E243022	French Creek at Barclay Bridge	11	2011 – present
FFCCS	E318151	Morningstar Creek 100m u/s Lee Rd W	3	2019 – present

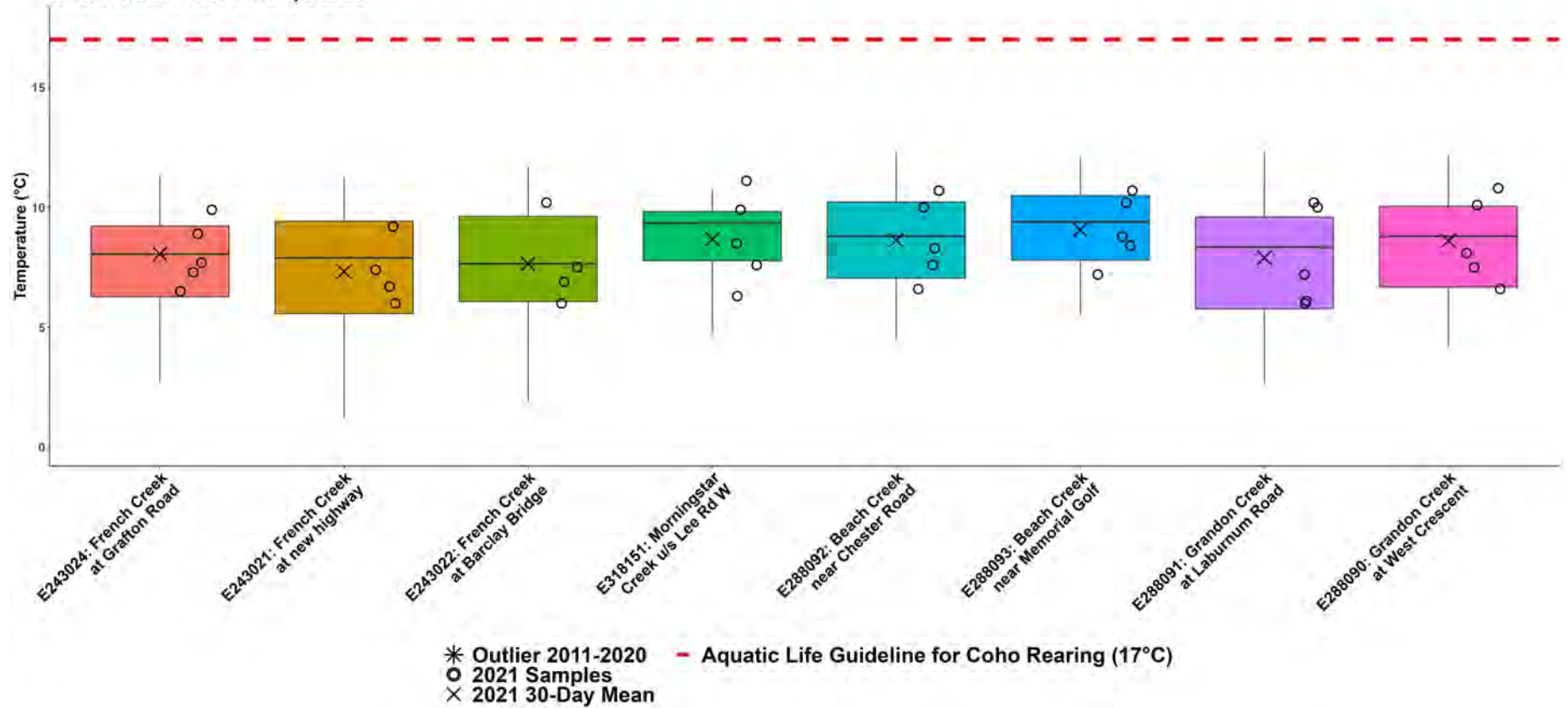


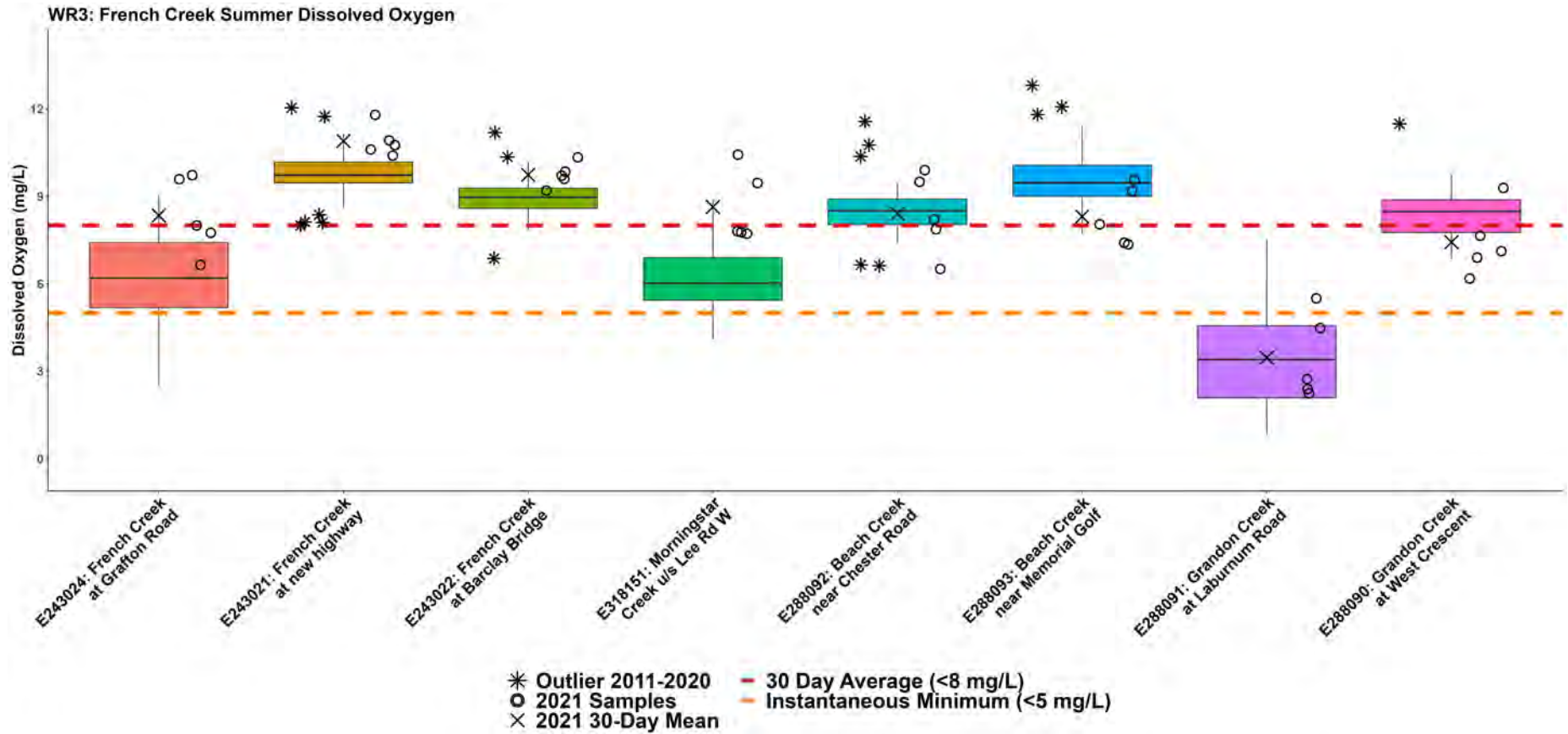
How to Interpret a Box Plot:



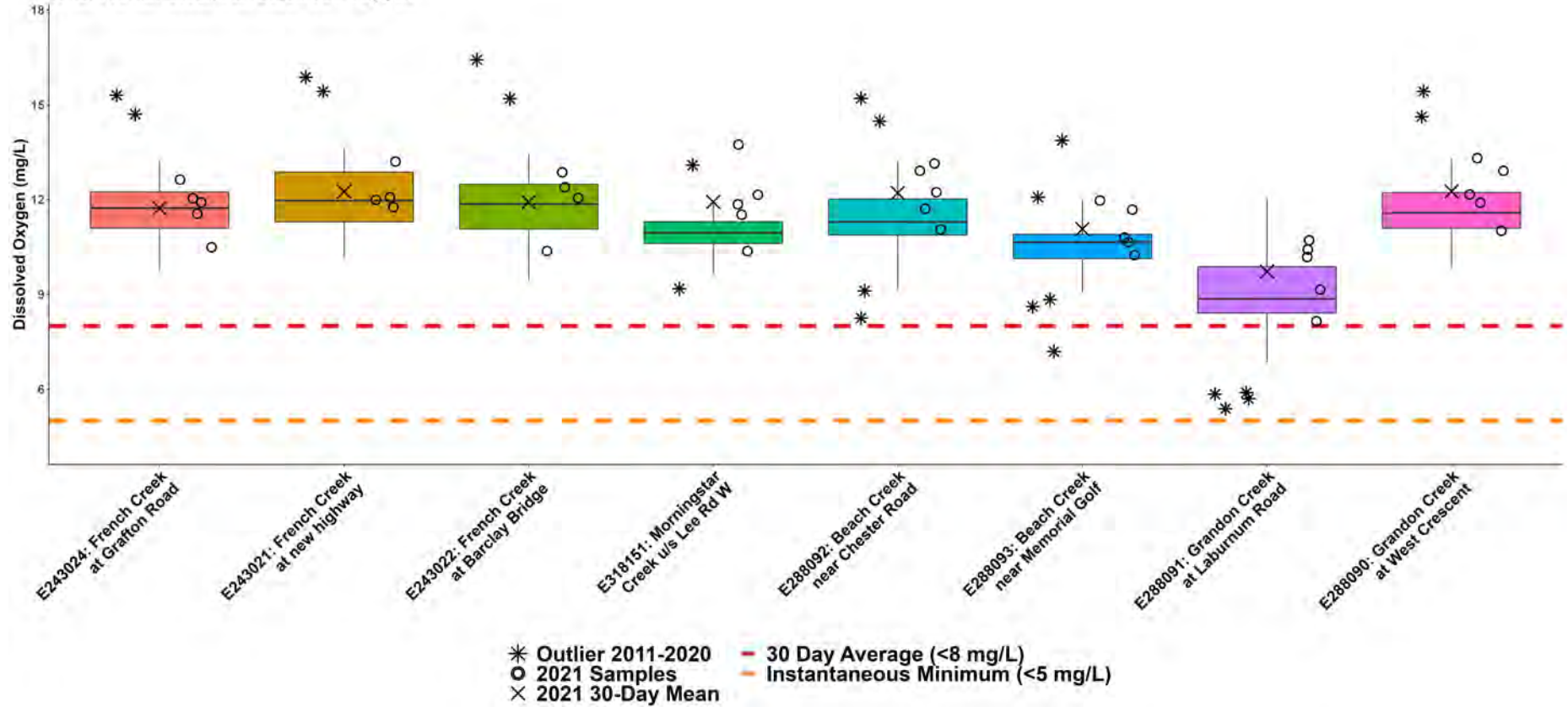


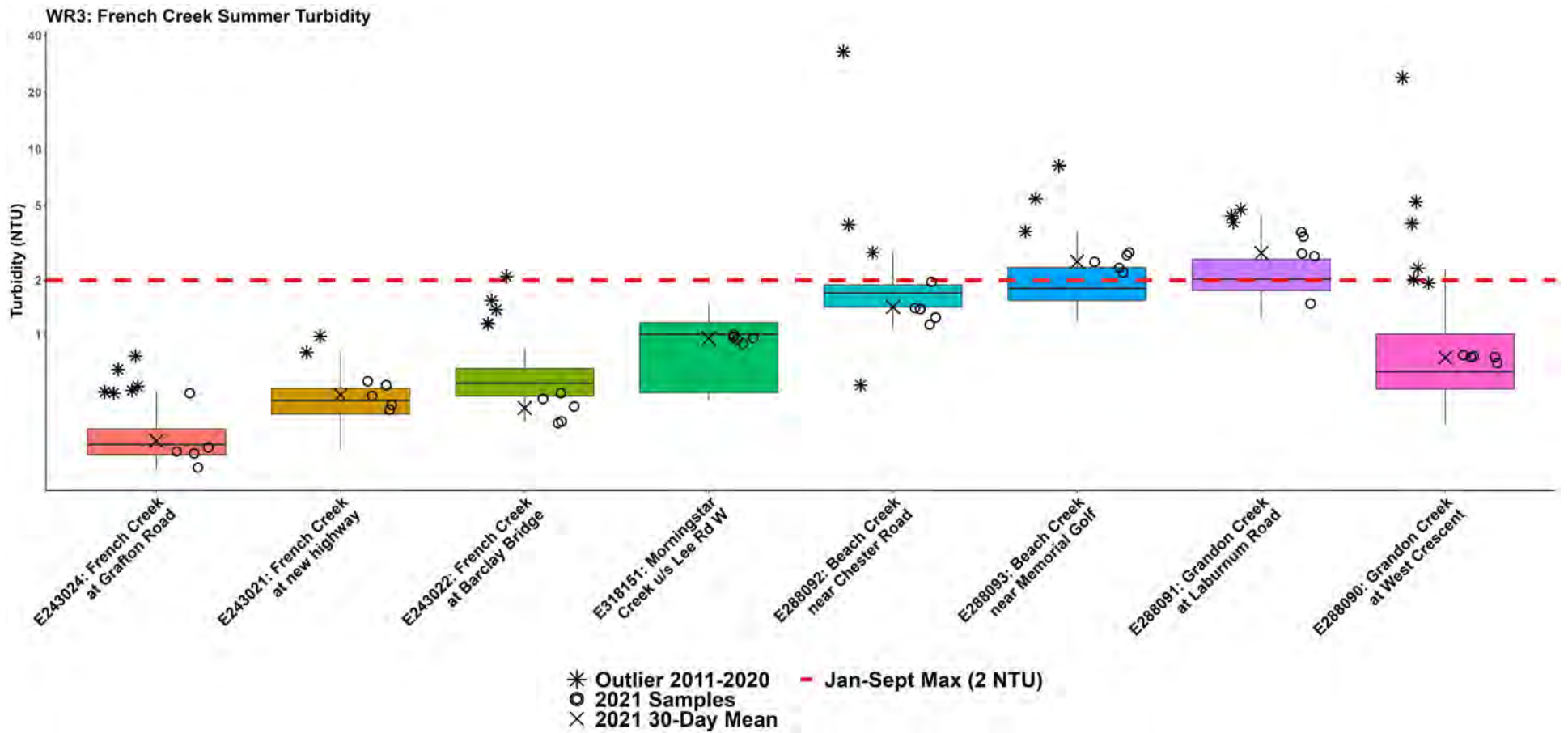
WR3: French Creek Fall Temperature

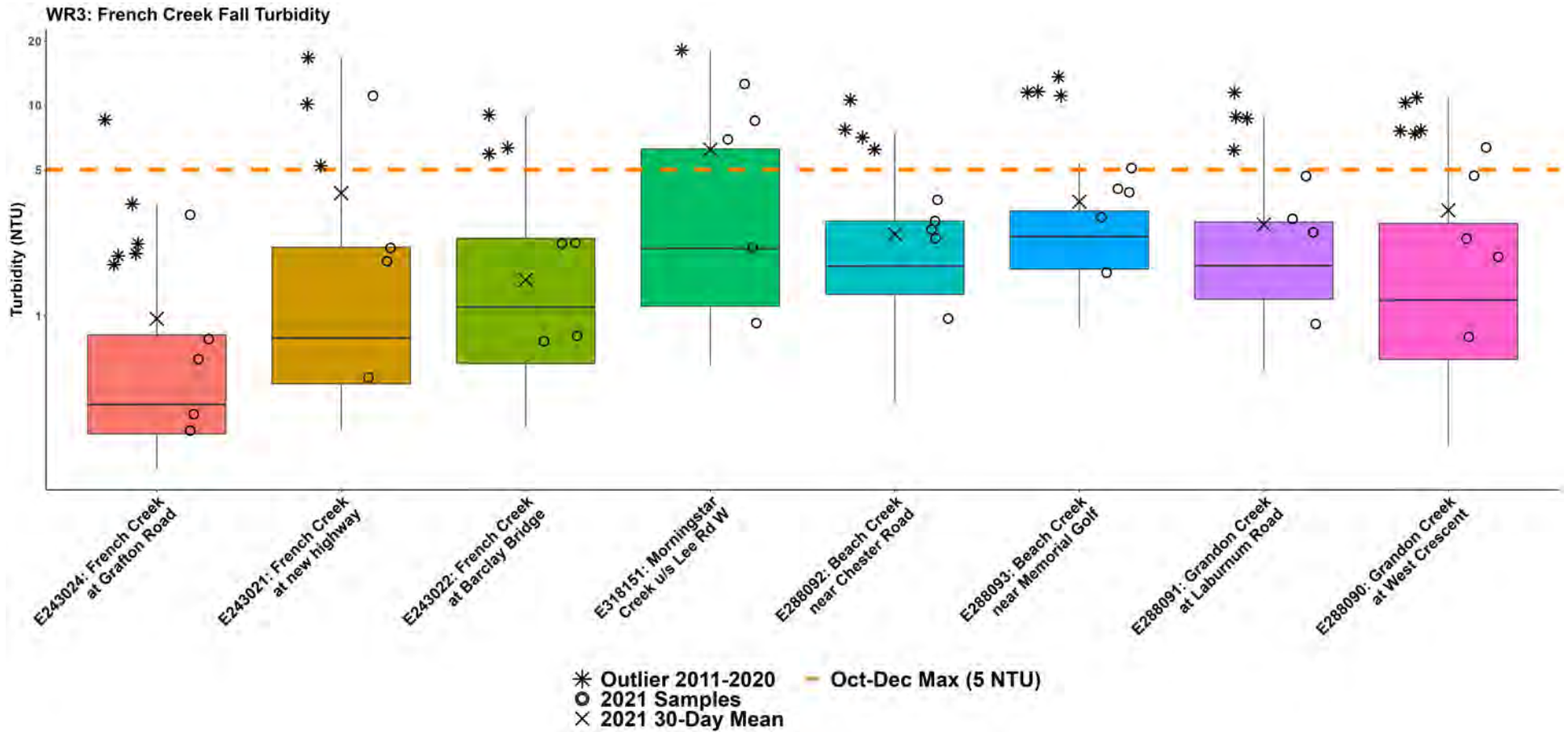


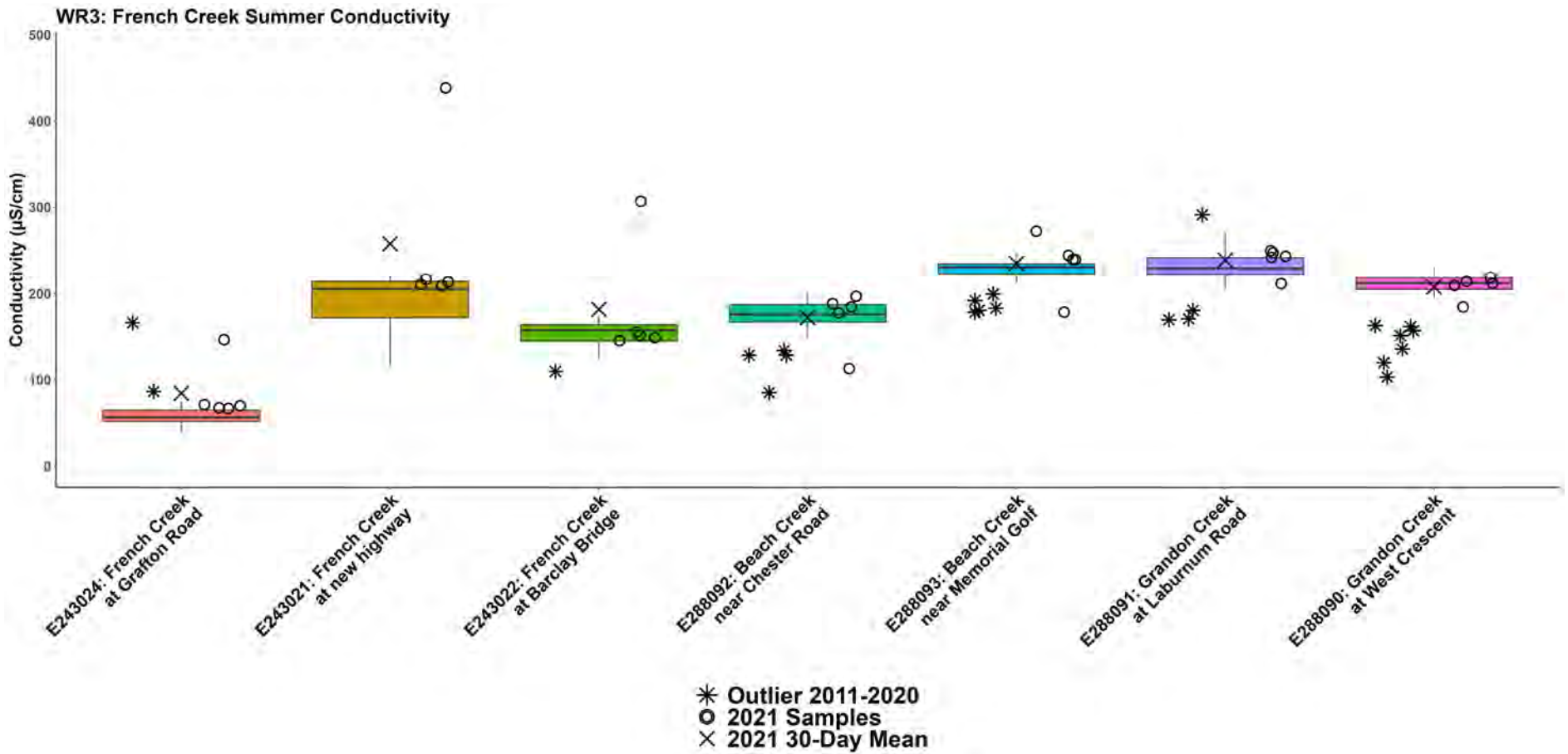


WR3: French Creek Fall Dissolved Oxygen

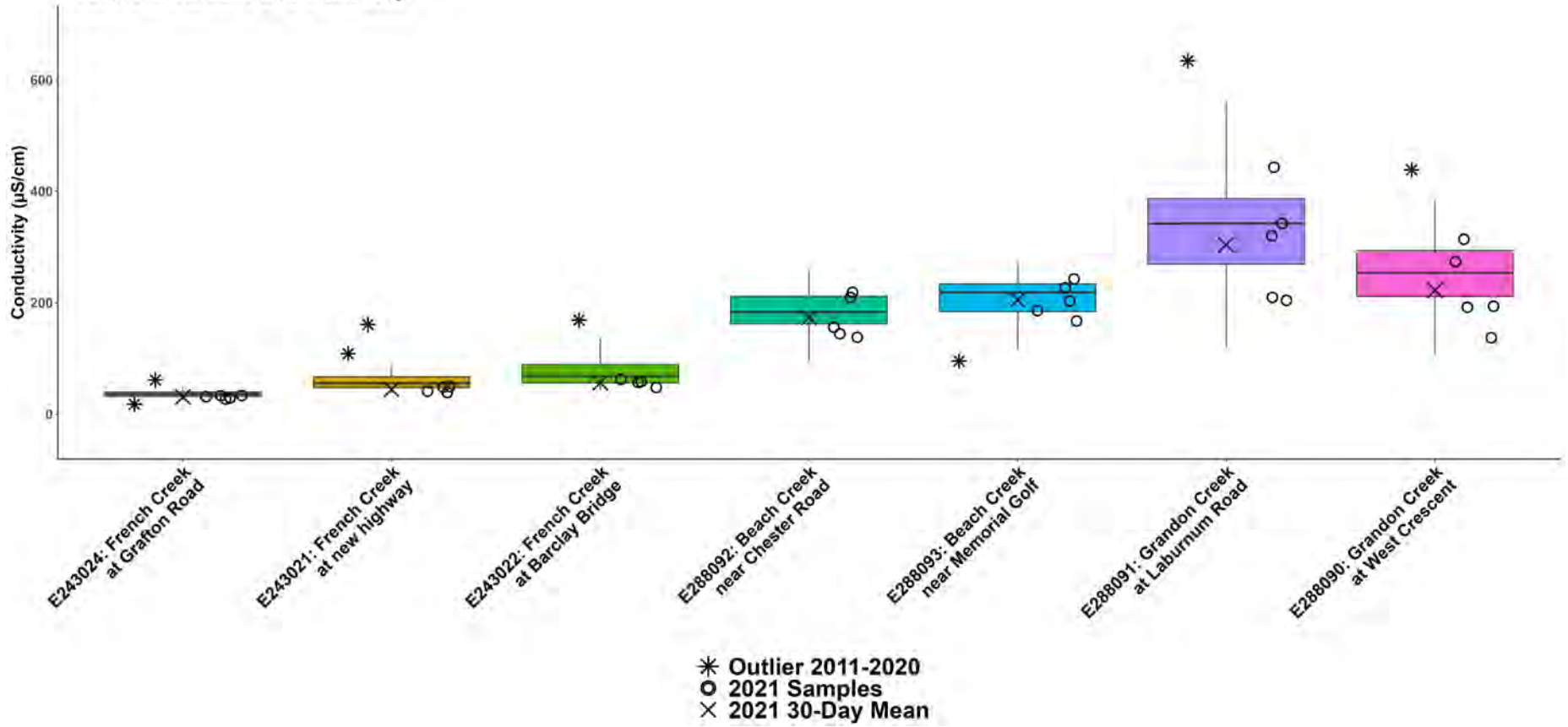


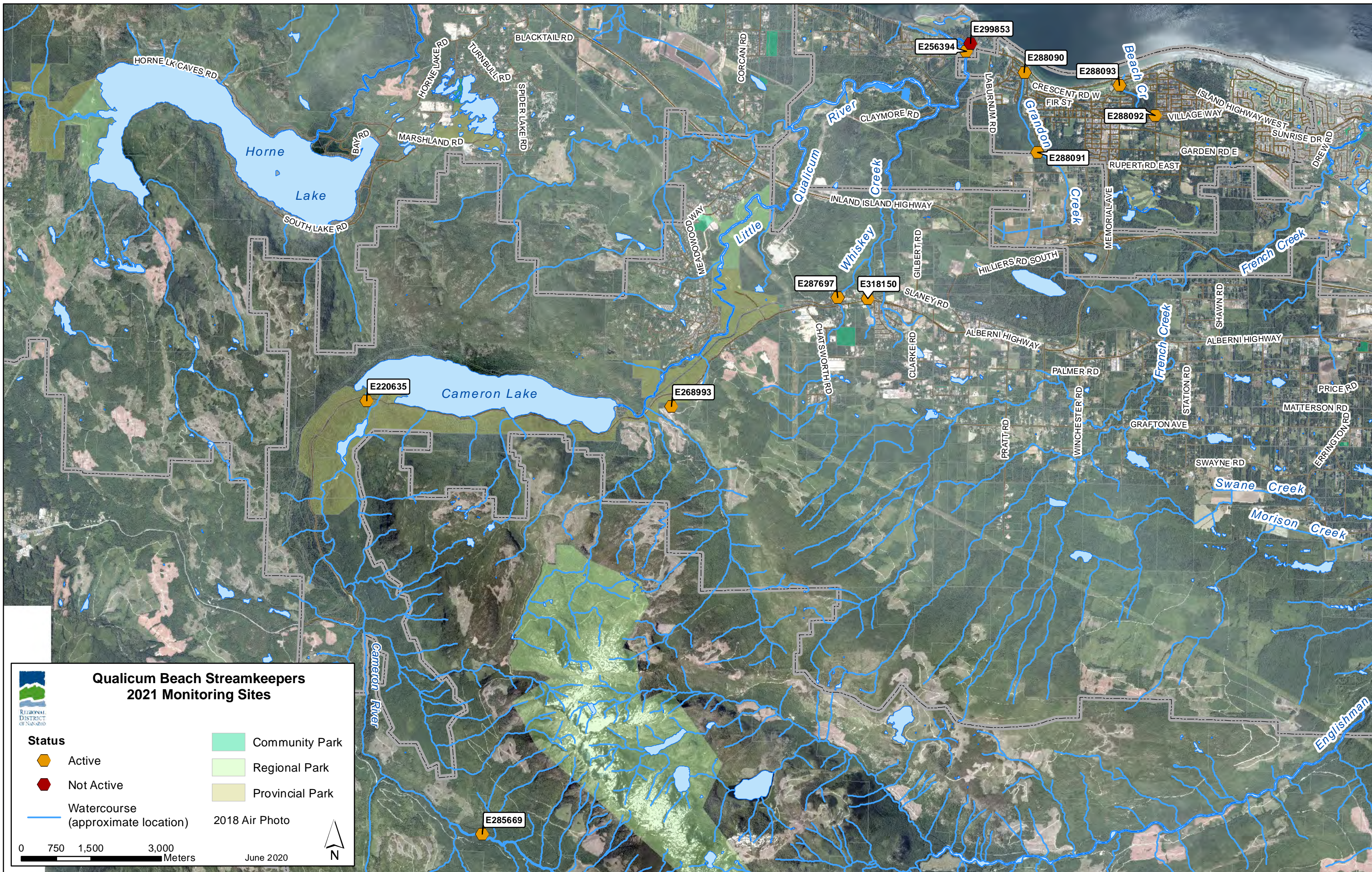






WR3: French Creek Fall Conductivity





**Qualicum Beach Streamkeepers
2021 Monitoring Sites**

REGIONAL DISTRICT OF NANAIMO

Status	Community Park
Active	Regional Park
Not Active	Provincial Park
Watercourse (approximate location)	2018 Air Photo

0 750 1,500 3,000 Meters






June 2020

N



**Friends of French Creek
2021 Monitoring Sites**

REGIONAL DISTRICT OF NANAIMO

Status	 Community Park
 Active	
 Not Active	
 Watercourse (approximate location)	
 2018 Air Photo	

0 250 500 1,000 Meters

June 2020