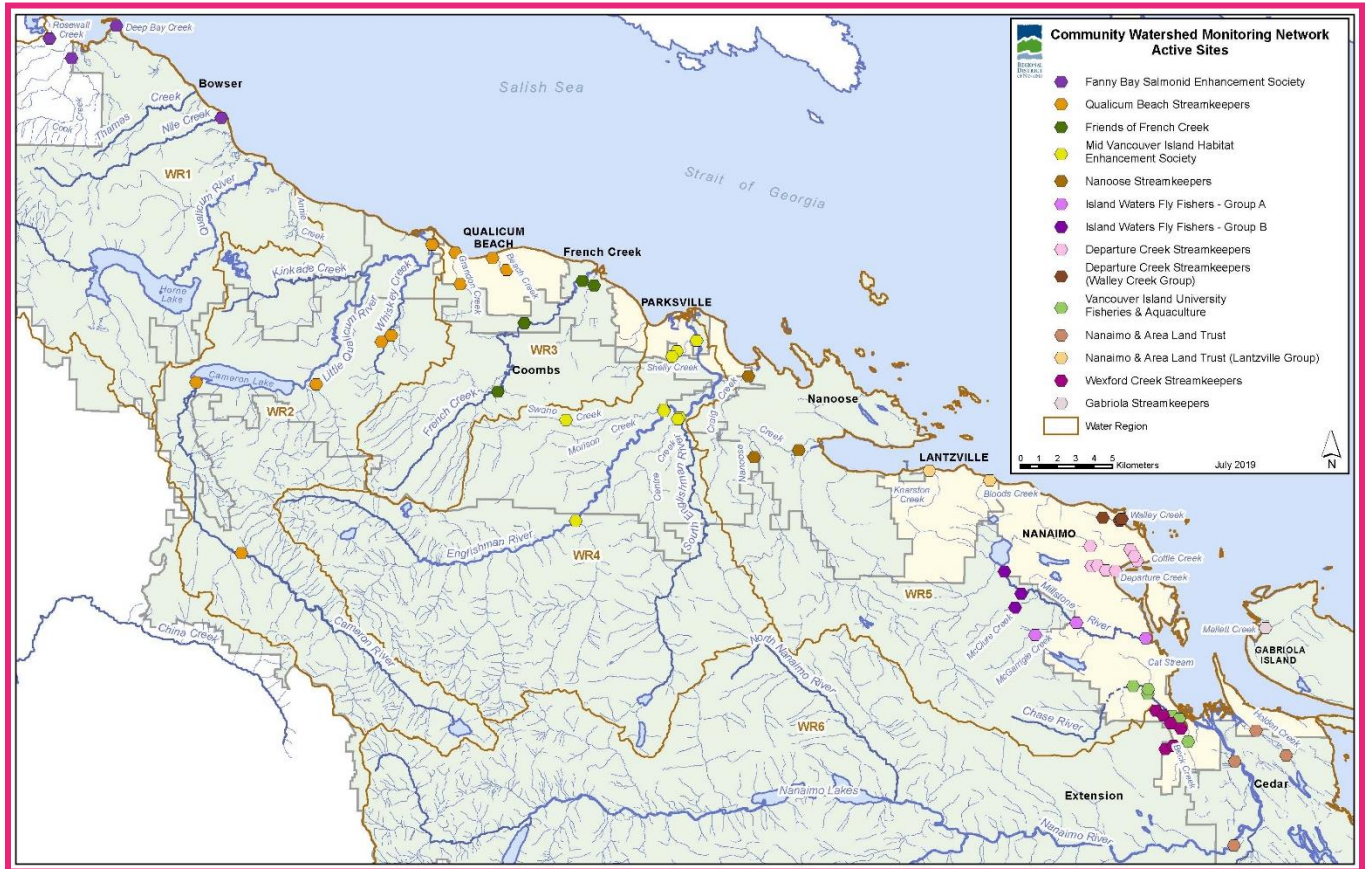


# Community Watershed Monitoring Network 2019

## Results by Water Region



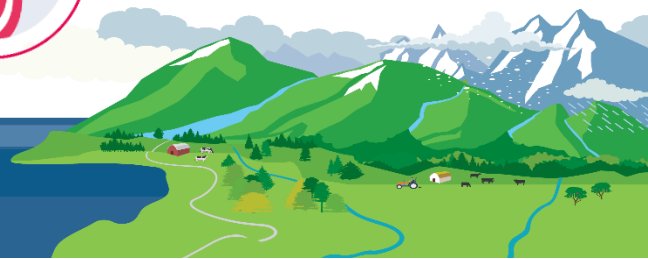
Included in your Water Region package:

1. CWMN sample sites in Water Region (WR) 2
2. How to interpret a box plot
3. Box Plot Comparison 2019 data to previous years:  
*Graphs displayed per parameter (Temperature, Dissolved Oxygen, Turbidity, Conductivity) per sample period (summer and fall)*
4. QBS CWMN map of sample sites



Water Region 2  
sampled by:

**Qualicum Beach  
Streamkeepers  
Society (QBS)**



## **CWMN Sample Sites in WR 2:**

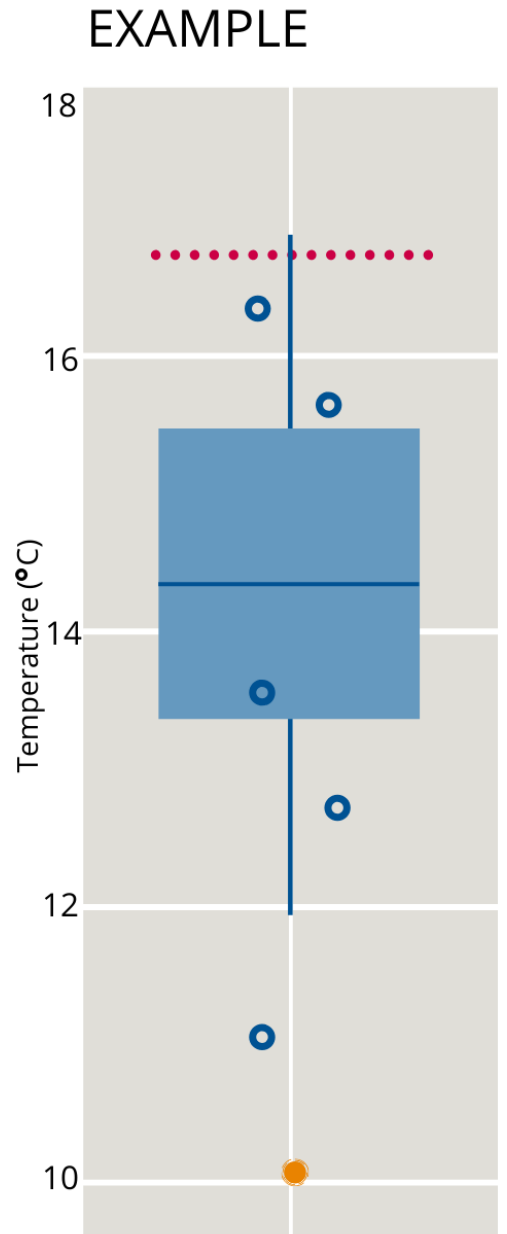
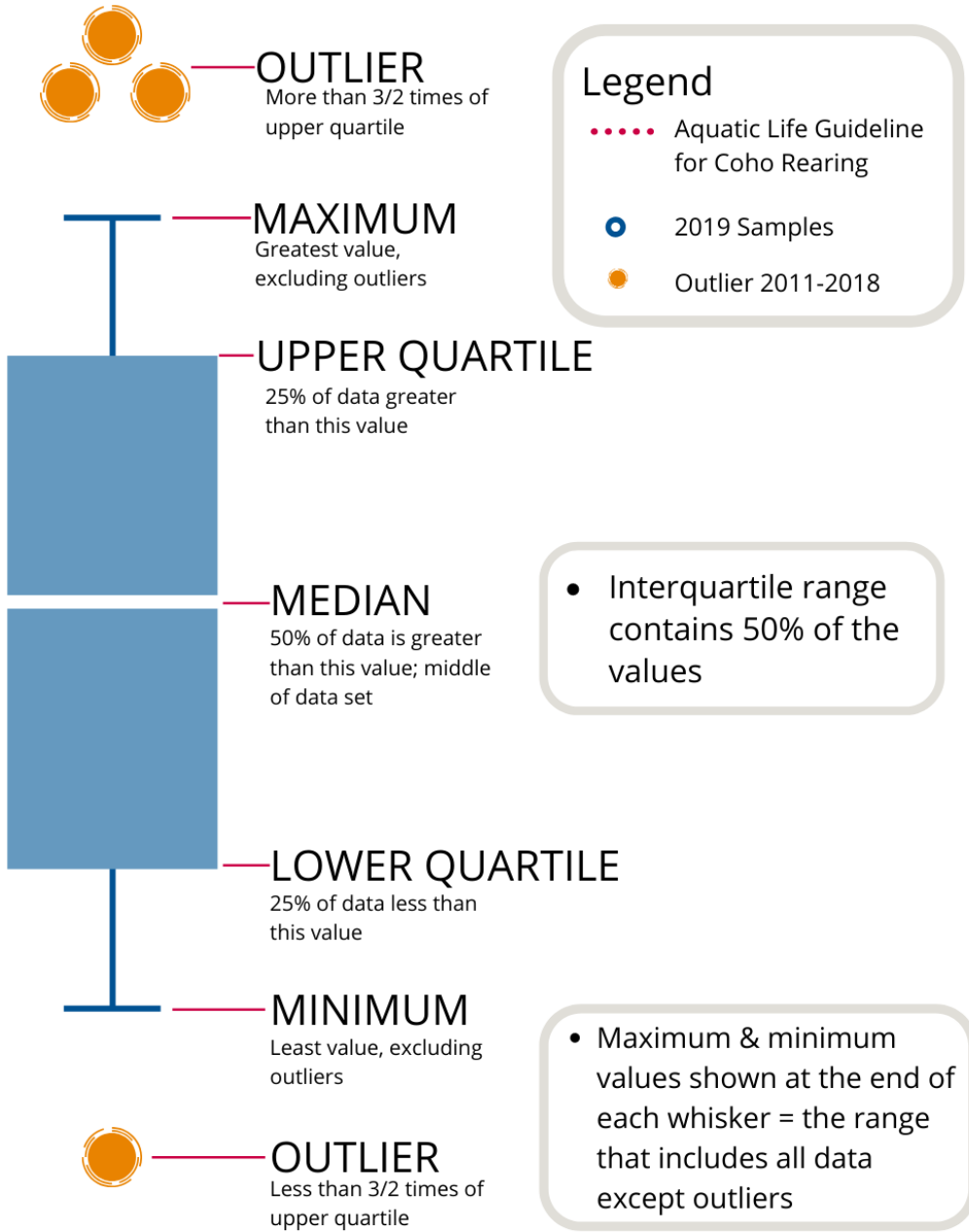
The table below shows the group(s) and sites monitored, as well as the number of years and which years a site was sampled. The number of years is important to keep in mind when interpreting the box plots as the plot for each site may contain a slightly different temporal range.

<b>Group</b>	<b>EMS ID</b>	<b>Geographic Description</b>	<b>Years Sampled*</b>	<b>Years Monitored</b>
QBS	E285669	Upper Cameron River	9	2011 - present
QBS	E220635	Cameron River (near the highway, just u/s of Cathedral Grove)	9	2011 - present
QBS	E268993	Little Qualicum River 1.2 km d/s Cameron Lake	9	2011 - present
QBS	E287697	Whiskey Creek on Hwy 4, TB Ave Save on Gas	9	2011 - present
QBS	E256394	Little Qualicum River at Intake	9	2011 - present
QBS	E318150	Harris Creek on north/downstream side of Hwy 4	1	2019 - present

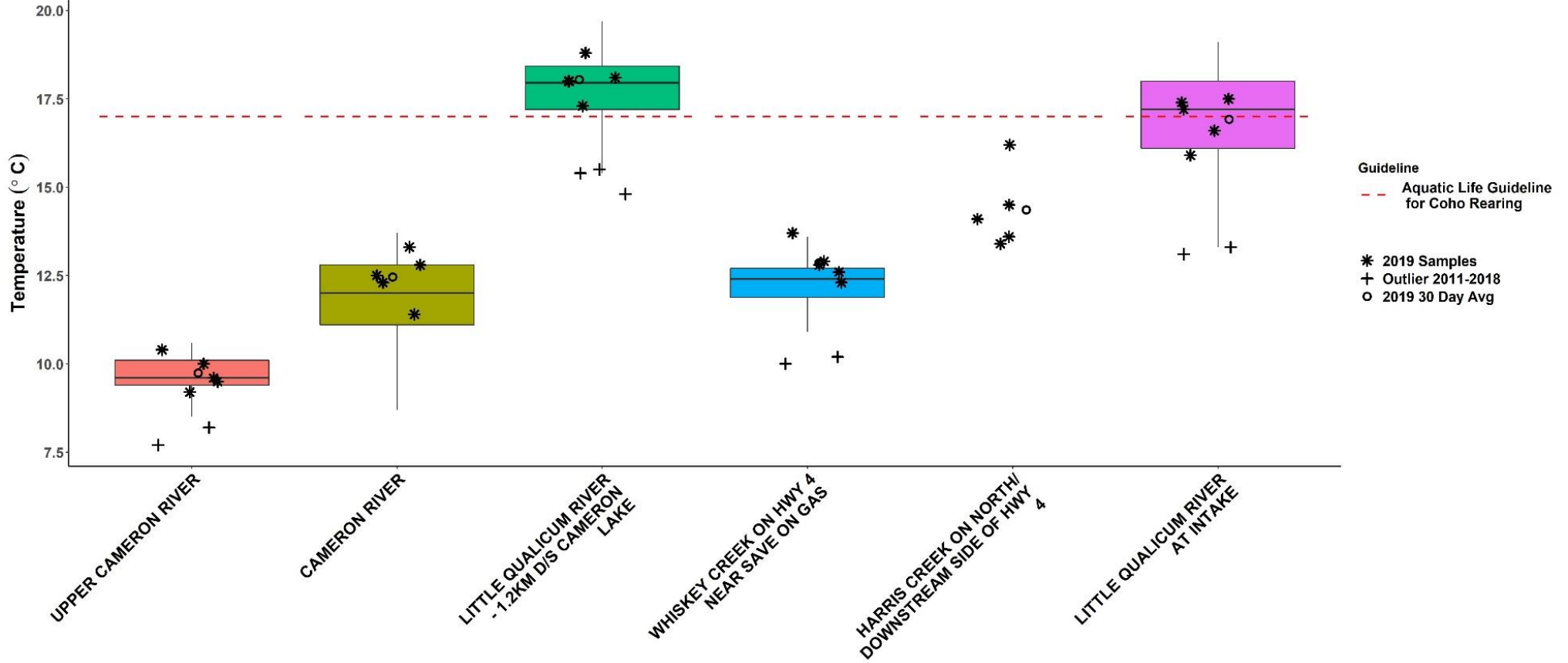
*\*The number of years sampled up to and including 2019.*



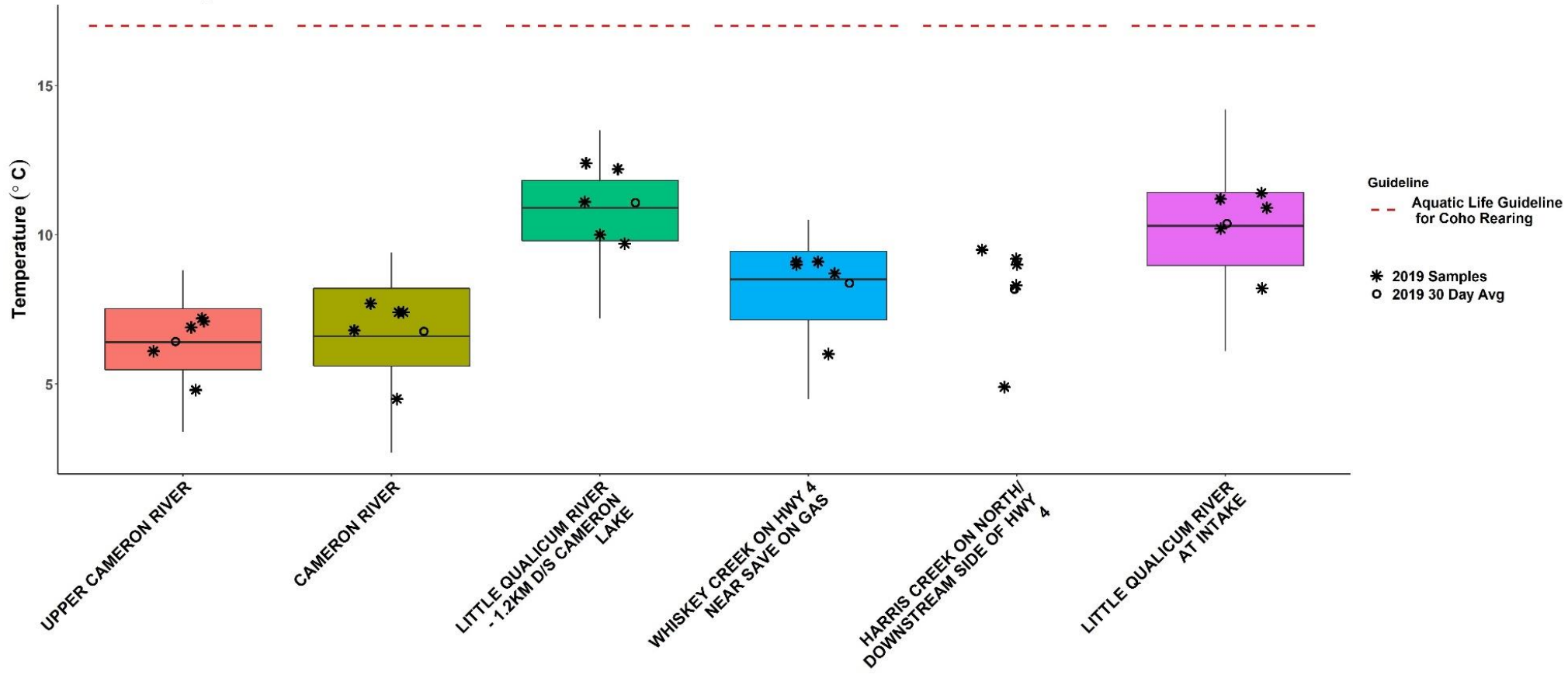
# How to Interpret a Box Plot:



# WR2 Summer Temperature

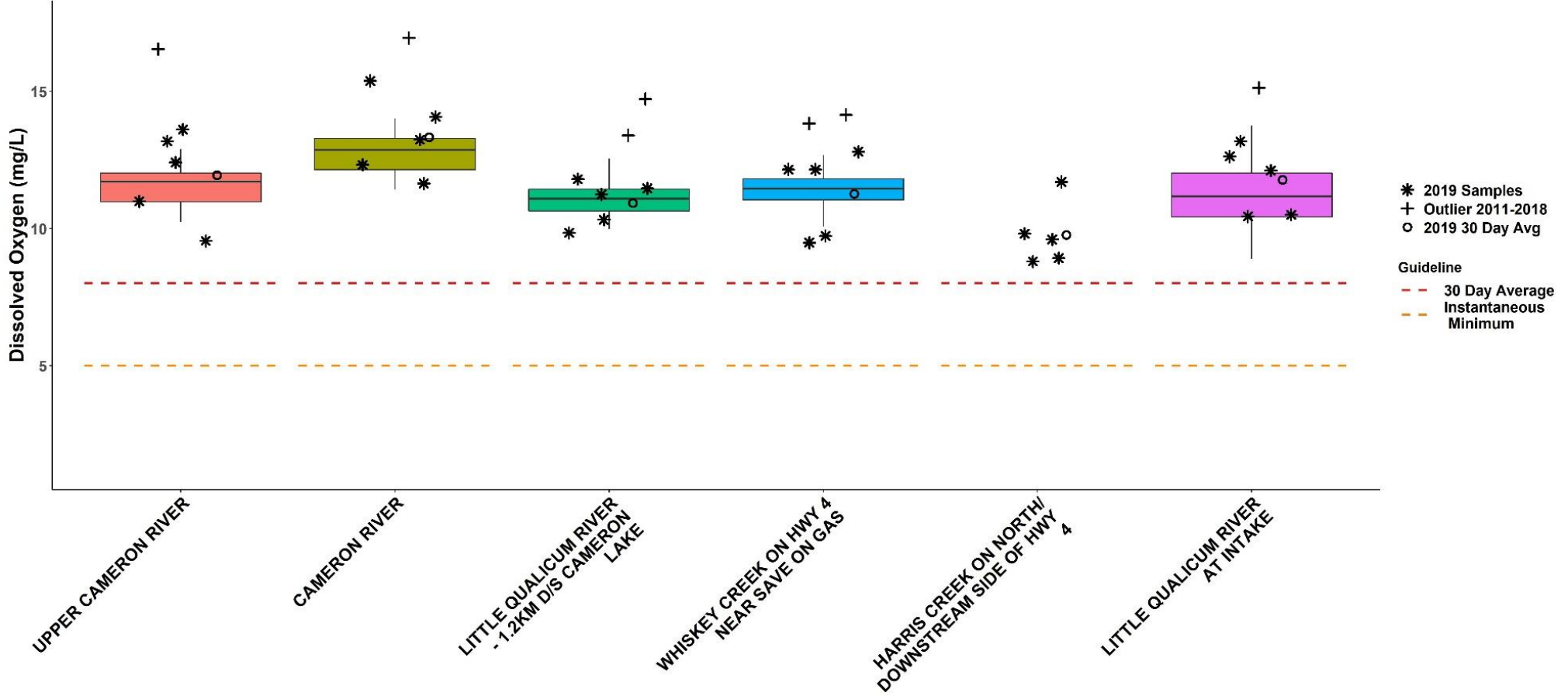


# WR2 Fall Temperature

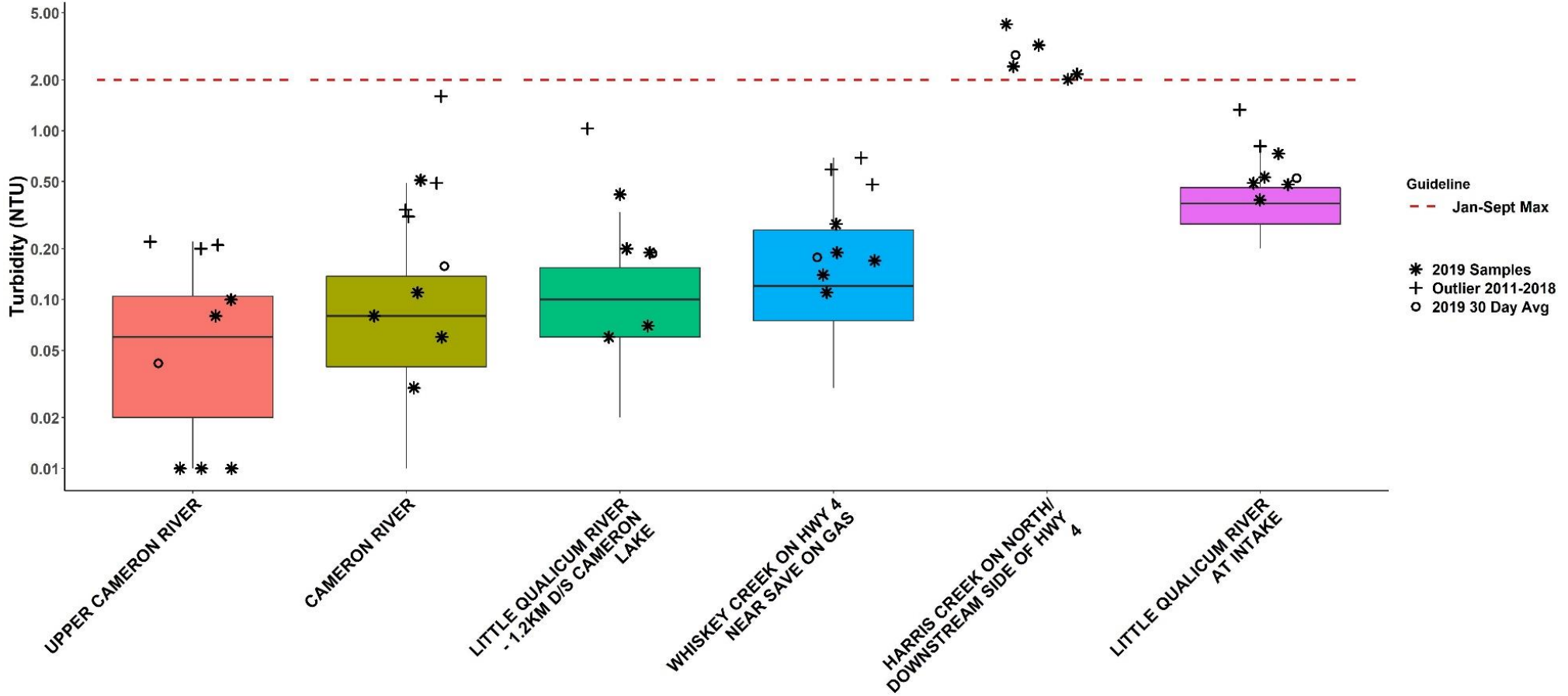




# WR2 Fall Dissolved Oxygen

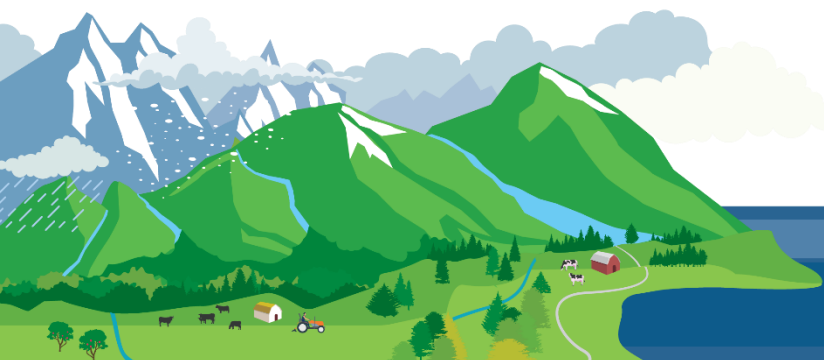
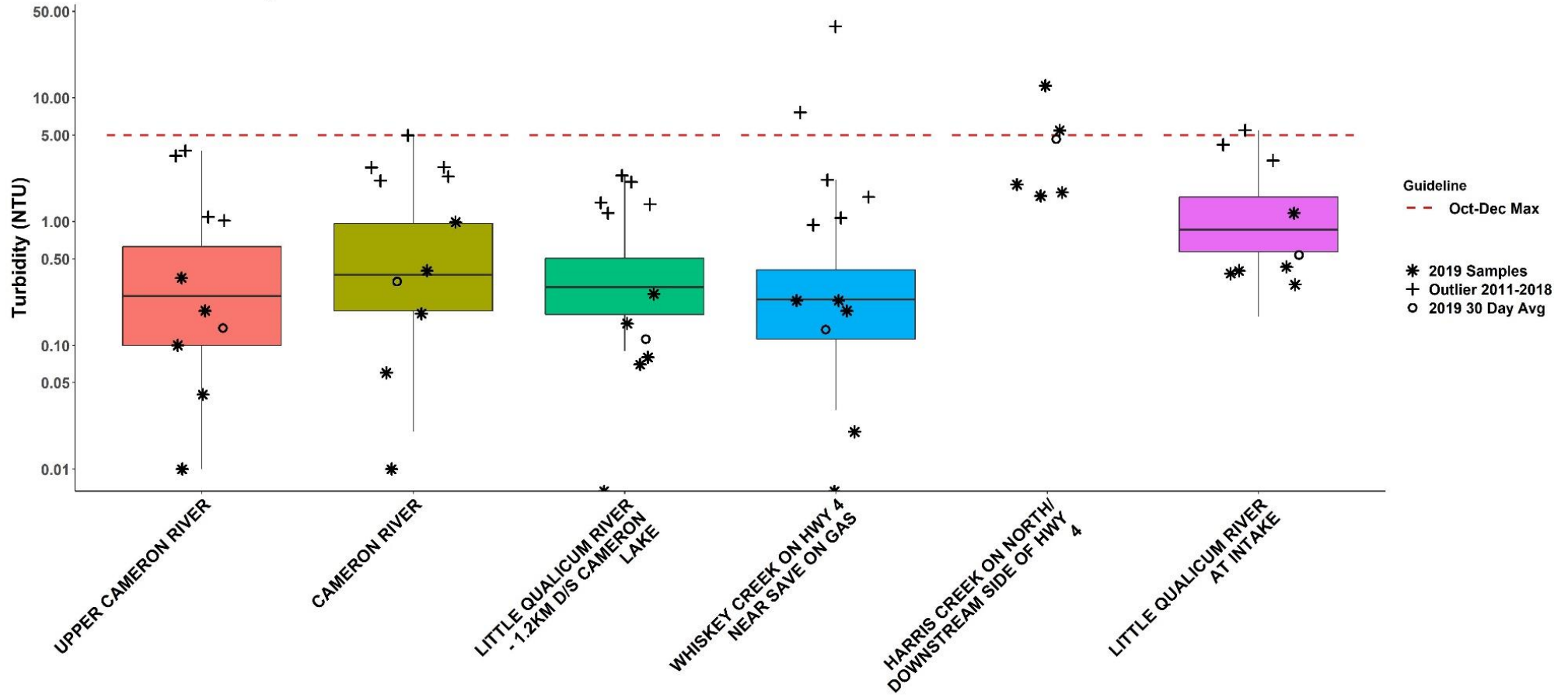


# WR2 Summer Turbidity

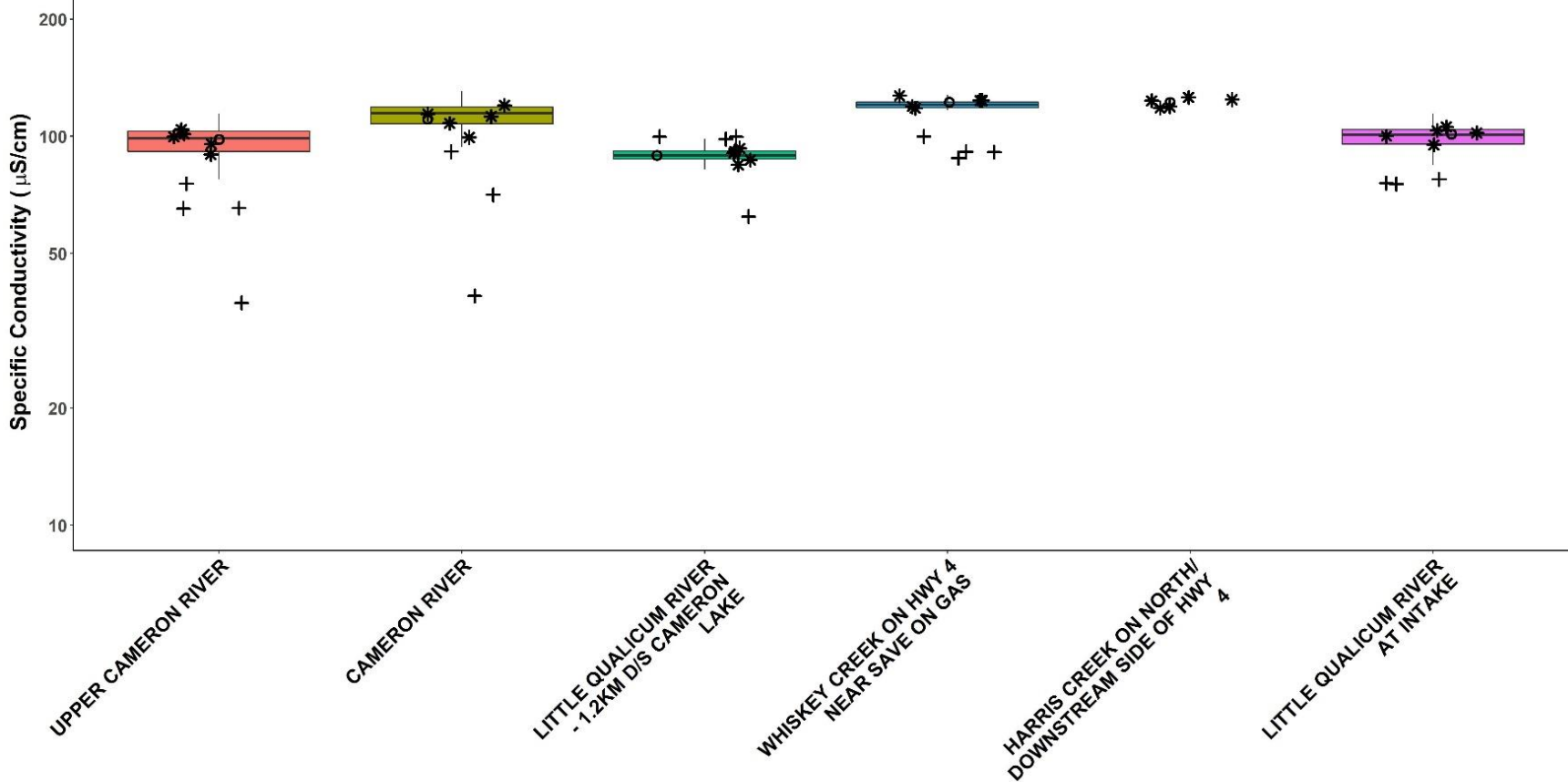




# WR2 Fall Turbidity



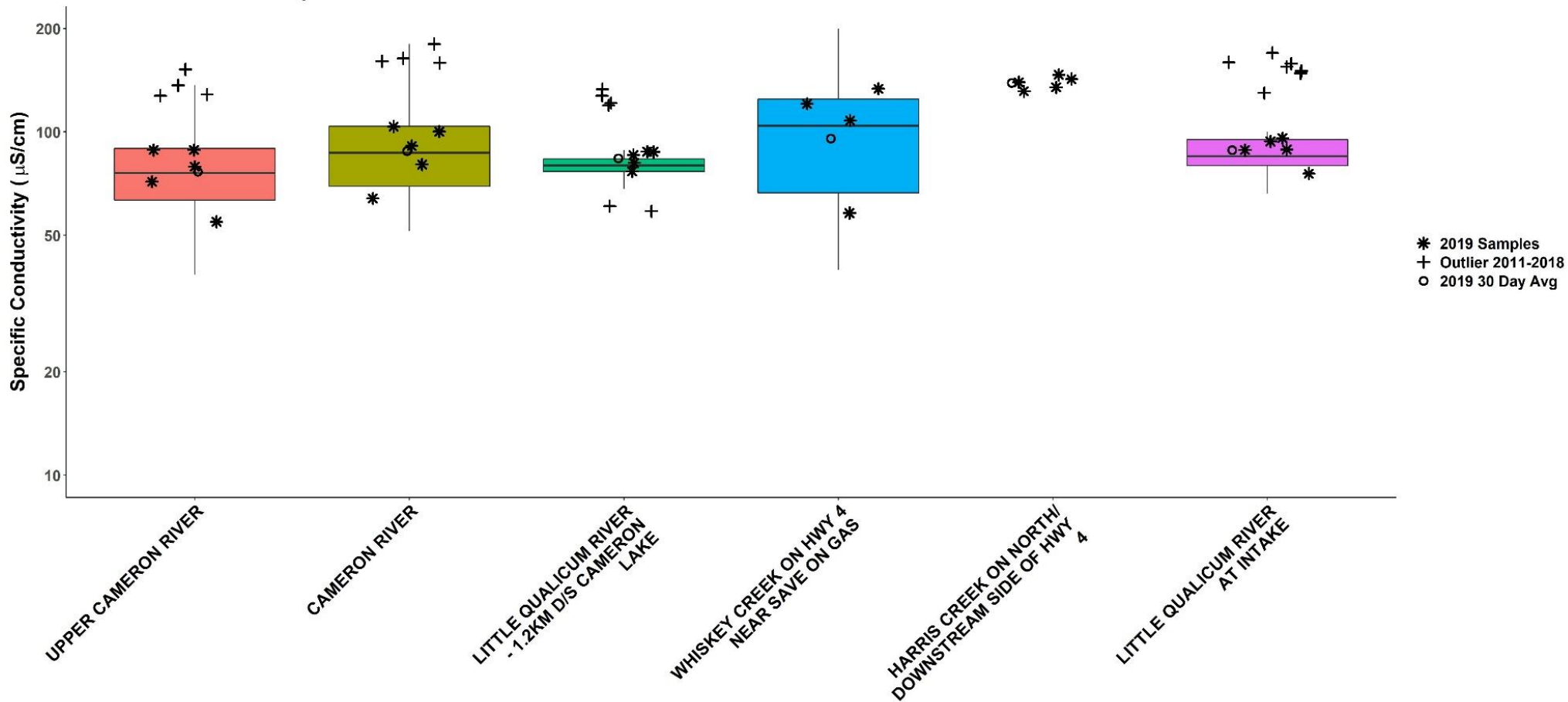
### WR2 Summer Conductivity

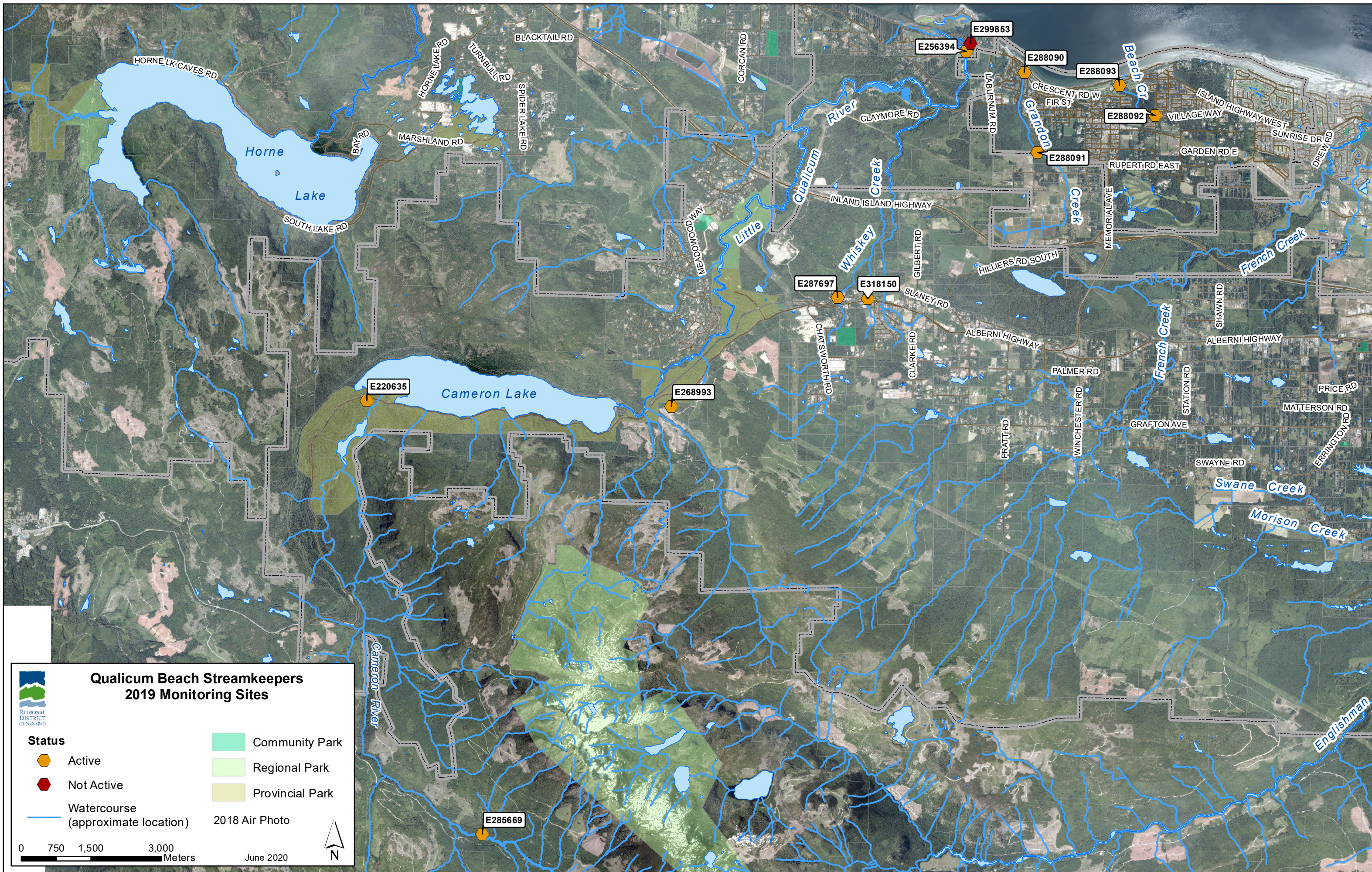


\* 2019 Samples  
 + Outlier 2011-2018  
 o 2019 30 Day Avg



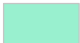

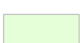

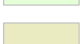

### WR2 Fall Conductivity





**Qualicum Beach Streamkeepers  
2019 Monitoring Sites**

REGIONAL DISTRICT OF NANAIMO

<b>Status</b>	 Community Park
 Active	 Regional Park
 Not Active	 Provincial Park
 Watercourse (approximate location)	2018 Air Photo

0 750 1,500 3,000 Meters

June 2020

N