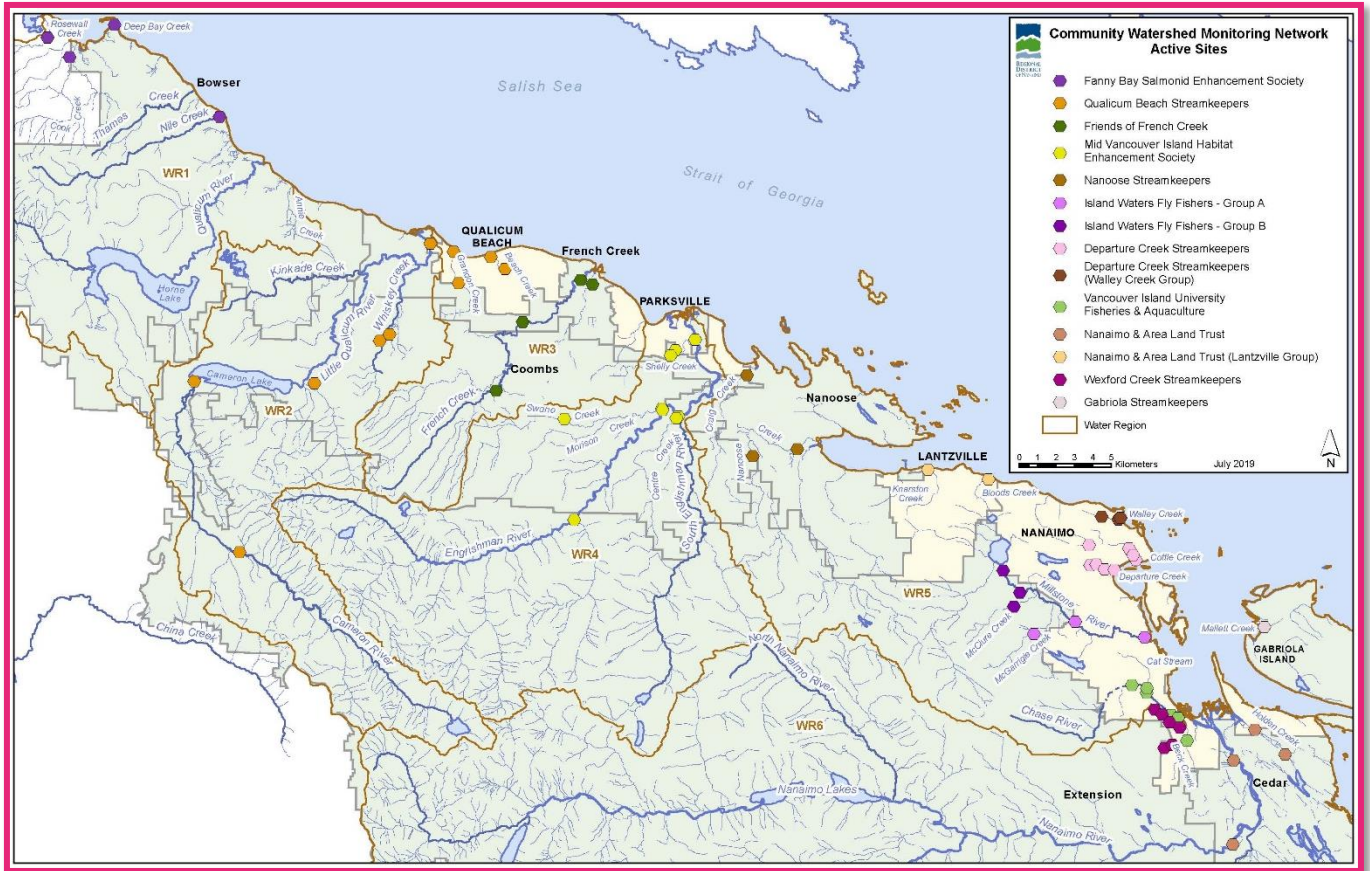


# Community Watershed Monitoring Network 2019

## Results by Water Region



Included in your Water Region package:

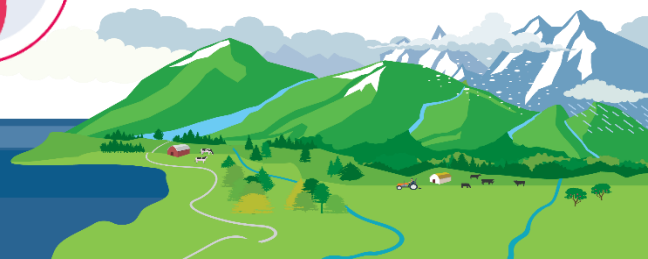
1. CWMN sample sites in Water Region (WR) 1
2. How to interpret a box plot
3. Box Plot Comparison 2019 data to previous years:

*Graphs displayed per parameter (Temperature, Dissolved Oxygen, Turbidity, Conductivity) per sample period (summer and fall)*

4. FBSES CWMN map of sample sites
5. NCES CWMN map of sample sites



Water Region 1  
sampled by:  
**Fanny Bay Salmonid  
Enhancement Society (FBSES)**  
&  
**Nile Creek Enhancement Society  
(NCES)**



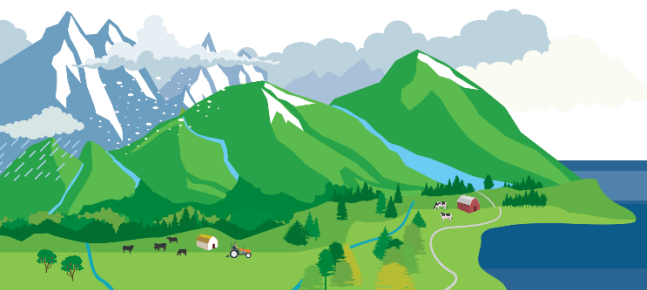
## **CWMN Sample Sites in WR 1:**

The table below shows the group(s) and sites monitored, as well as the number of years and which years a site was sampled. The number of years is important to keep in mind when interpreting the box plots as the plot for each site may contain a slightly different temporal range.

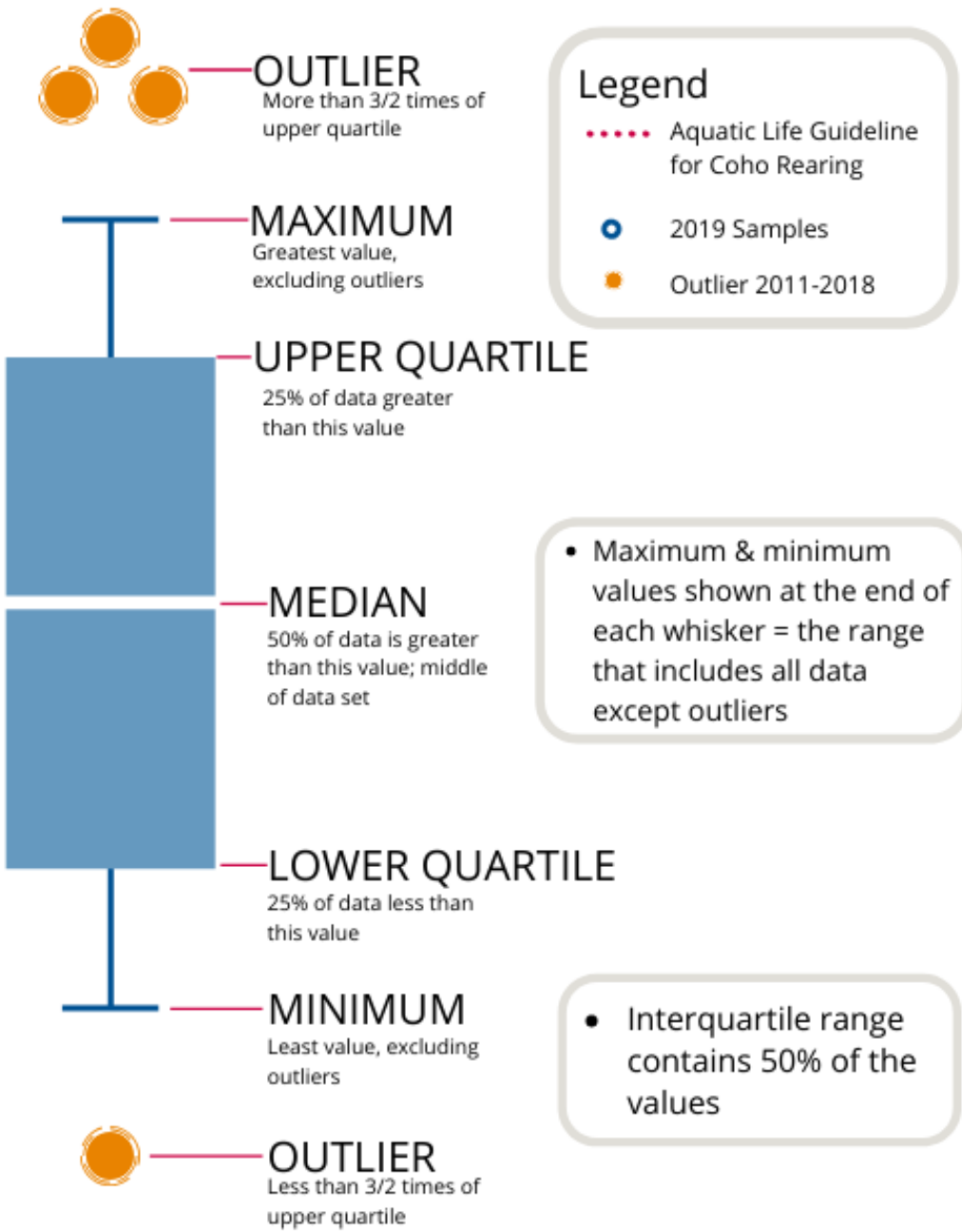
<b>Group</b>	<b>EMS ID</b>	<b>Geographic Description</b>	<b>Years Sampled*</b>	<b>Years Monitored</b>
FBSES	E306374	Rosewall Creek @ Rosewall Creek Park	4	2016 - present
FBSES	E309086	Cook Creek at Old Island Hwy Connector	3	2017 - present
FBSES	E306375	Deep Bay Creek	4	2016 - present
FBSES	E286553	Nile Creek @ Rosepark Rd (50m u/s Old Island Hwy)	8	2011 - 2015; Not Monitored in 2016; 2017 - present

*\*The number of years sampled up to and including 2019.*

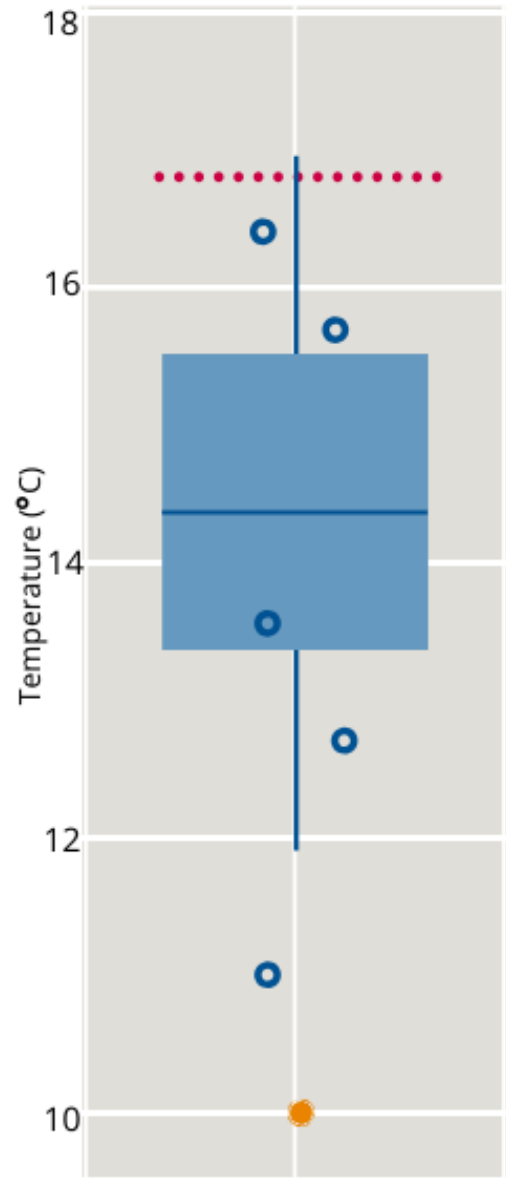
---



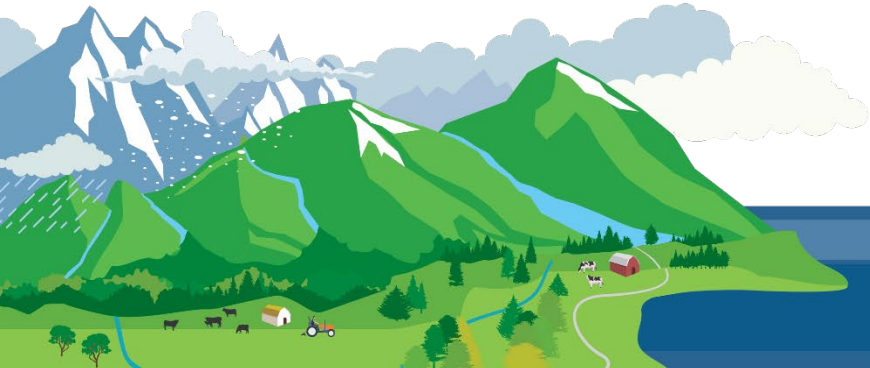
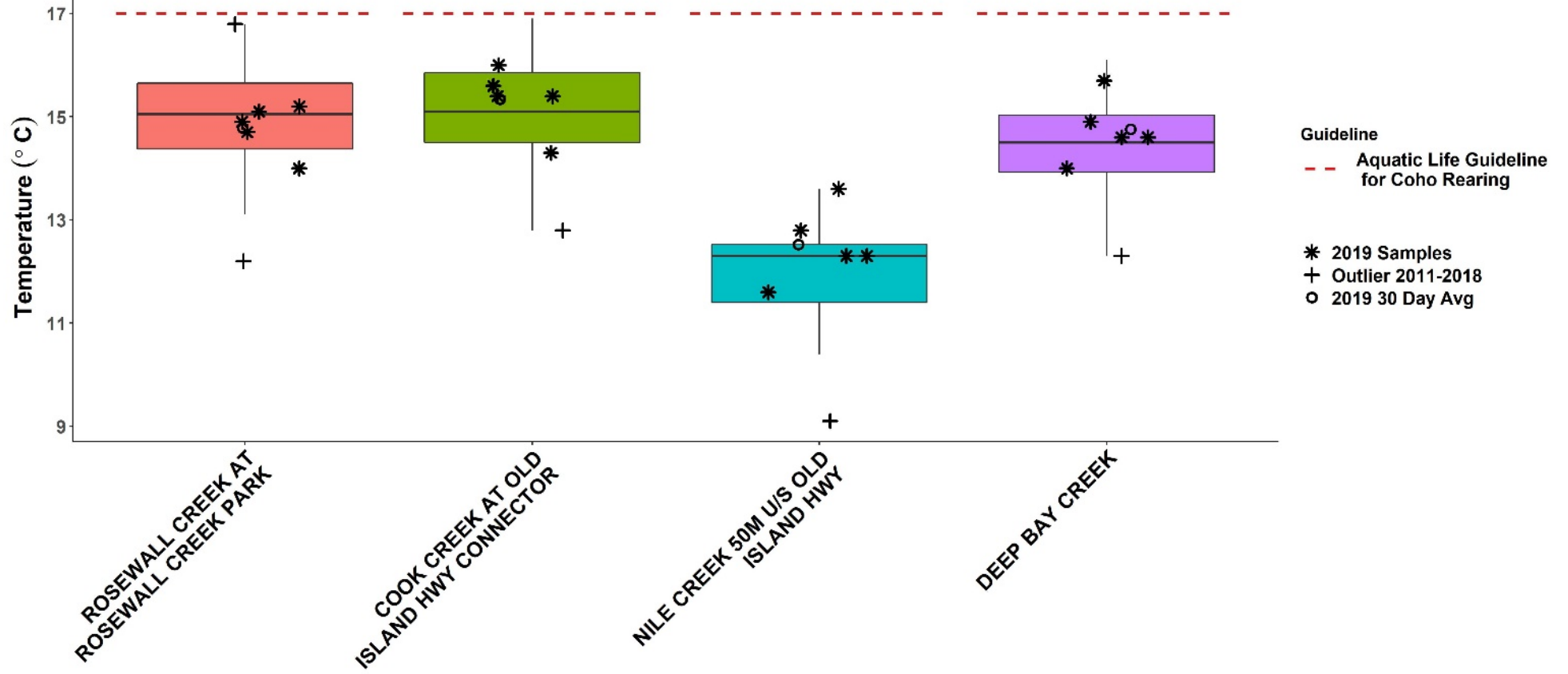
# How to Interpret a Box Plot:



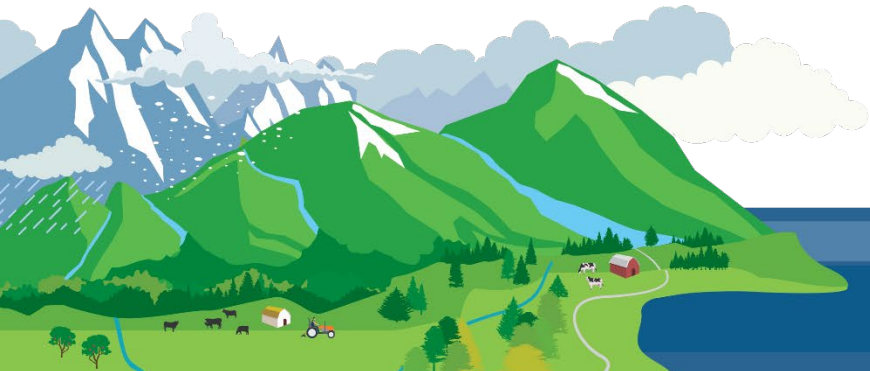
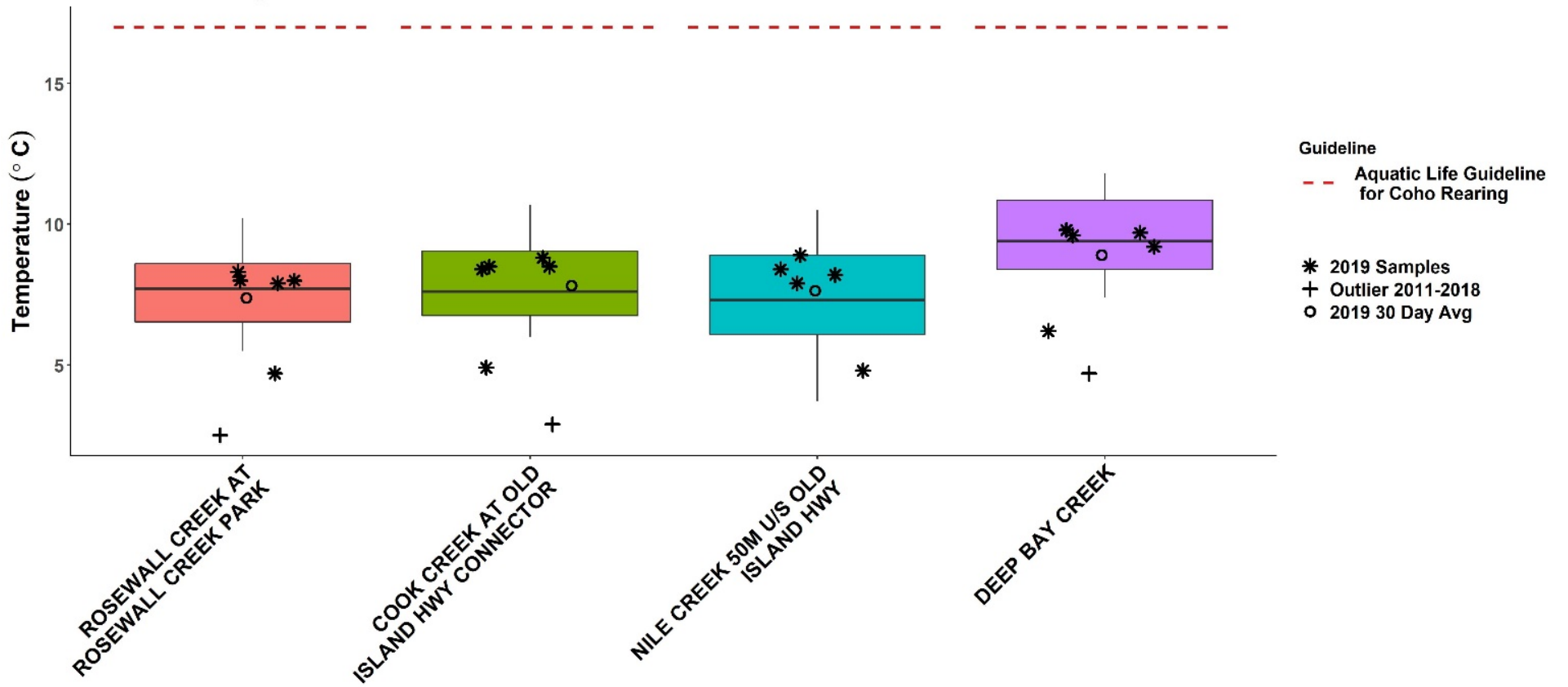
## EXAMPLE



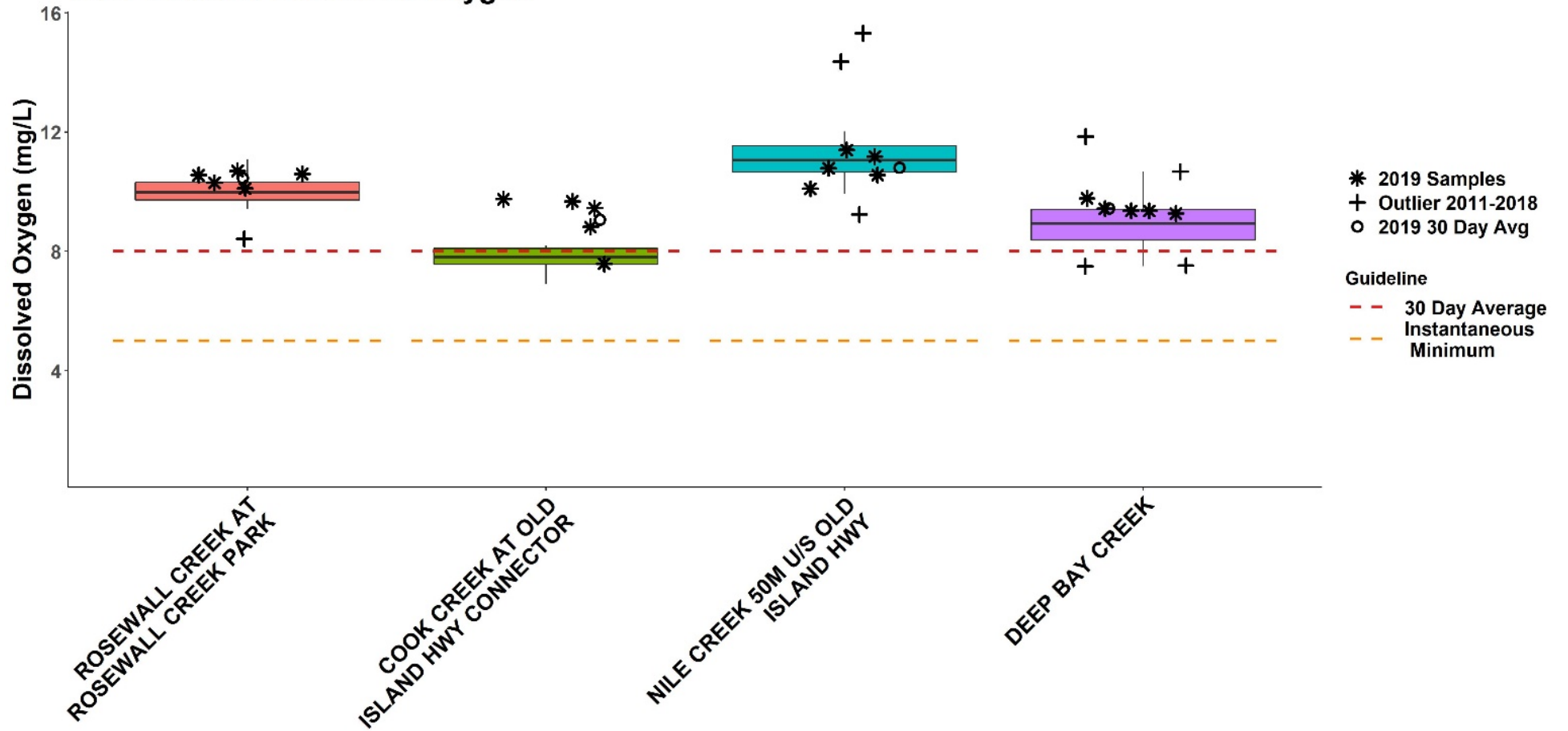
# WR1 Summer Temperature



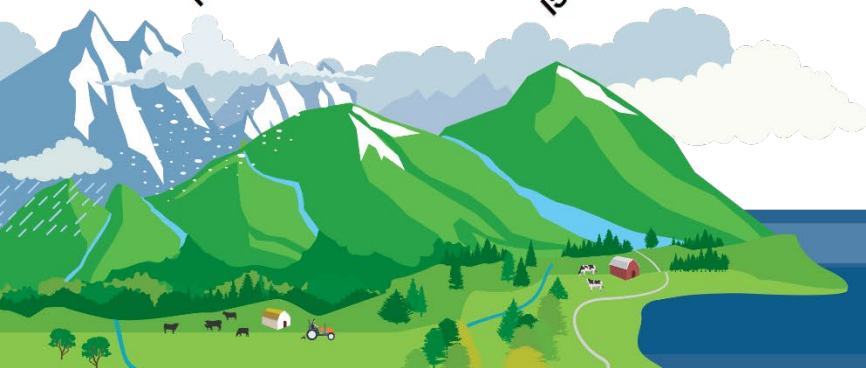
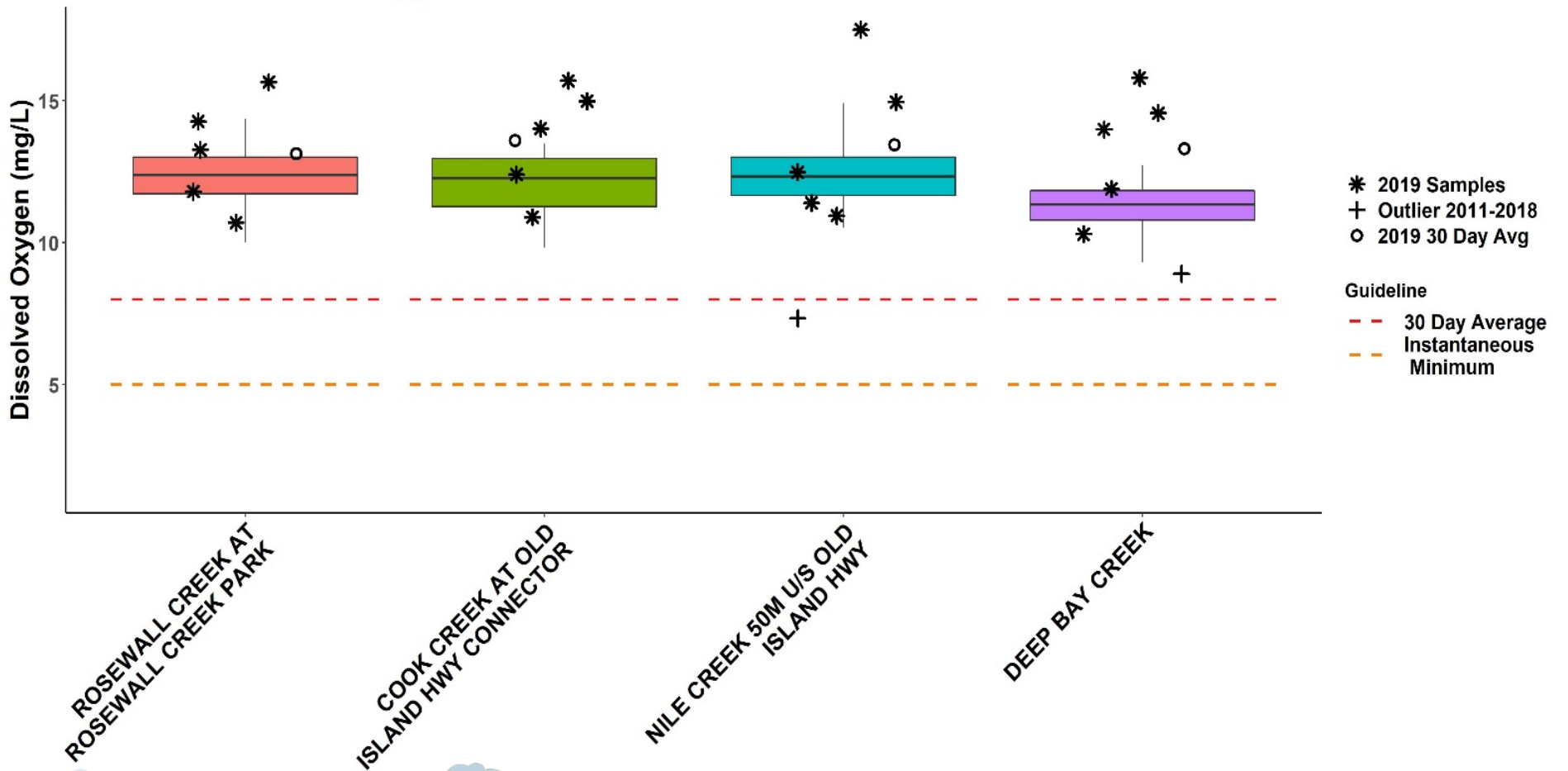
# WR1 Fall Temperature



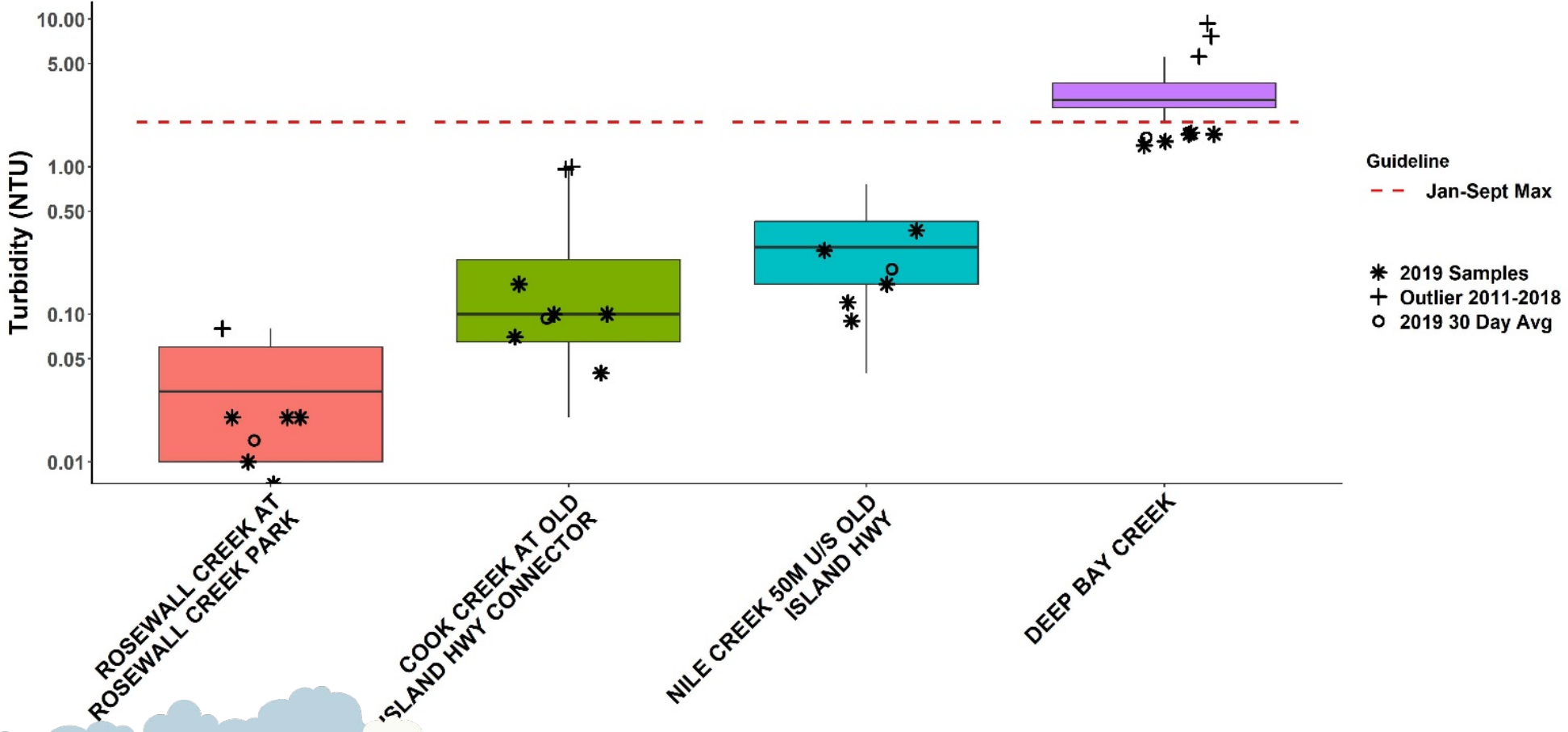
# WR1 Summer Dissolved Oxygen



# WR1 Fall Dissolved Oxygen

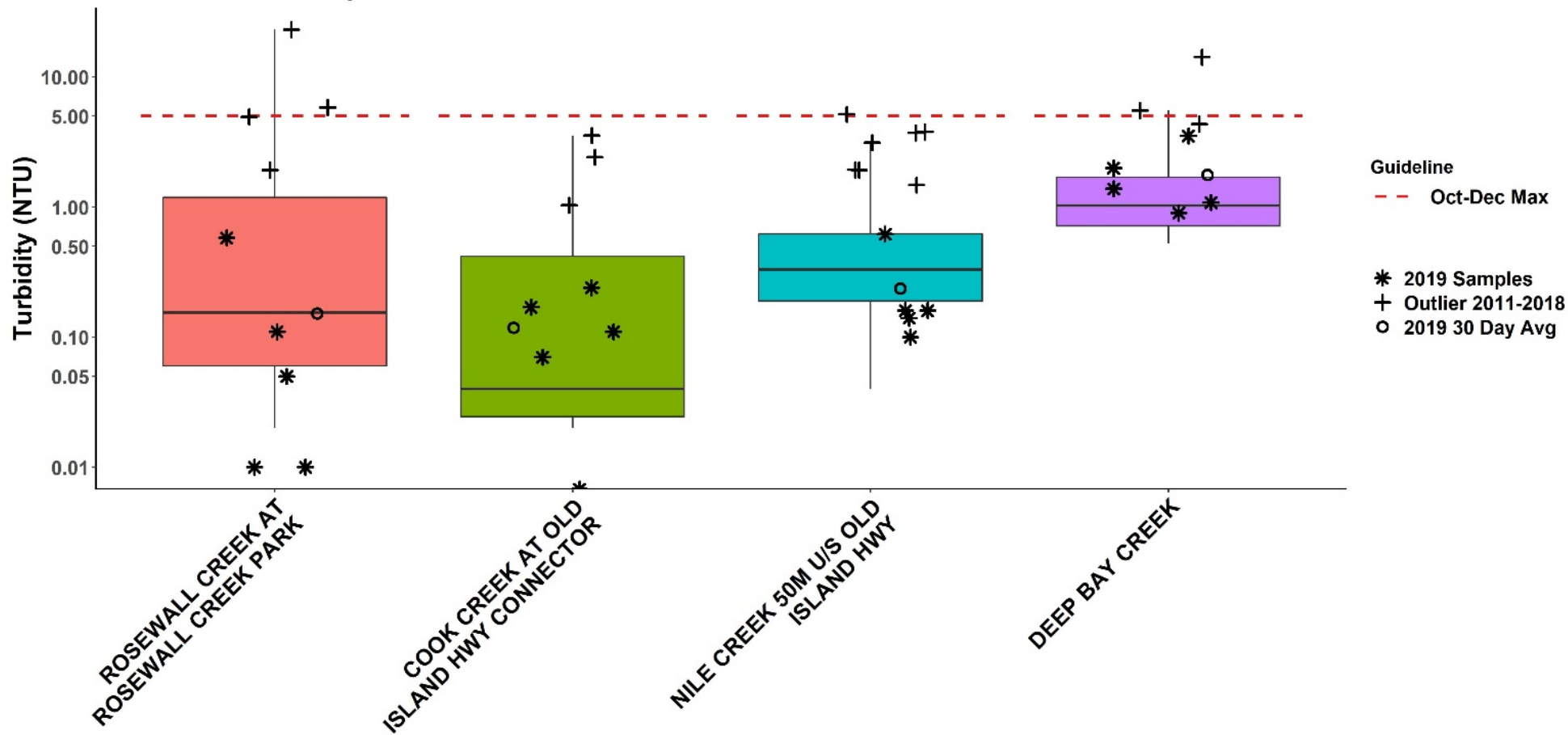


# WR1 Summer Turbidity

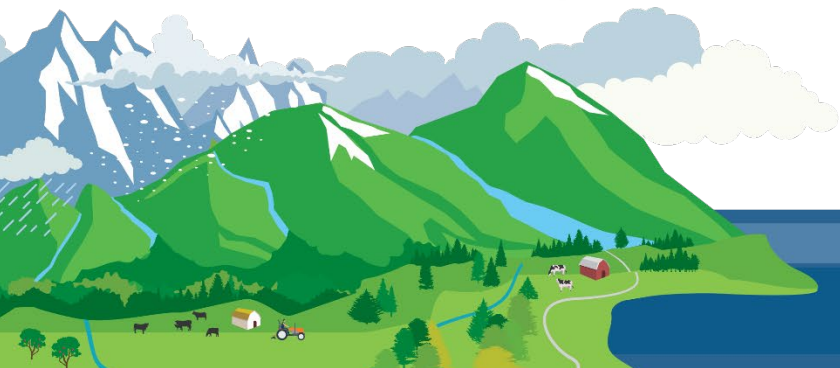
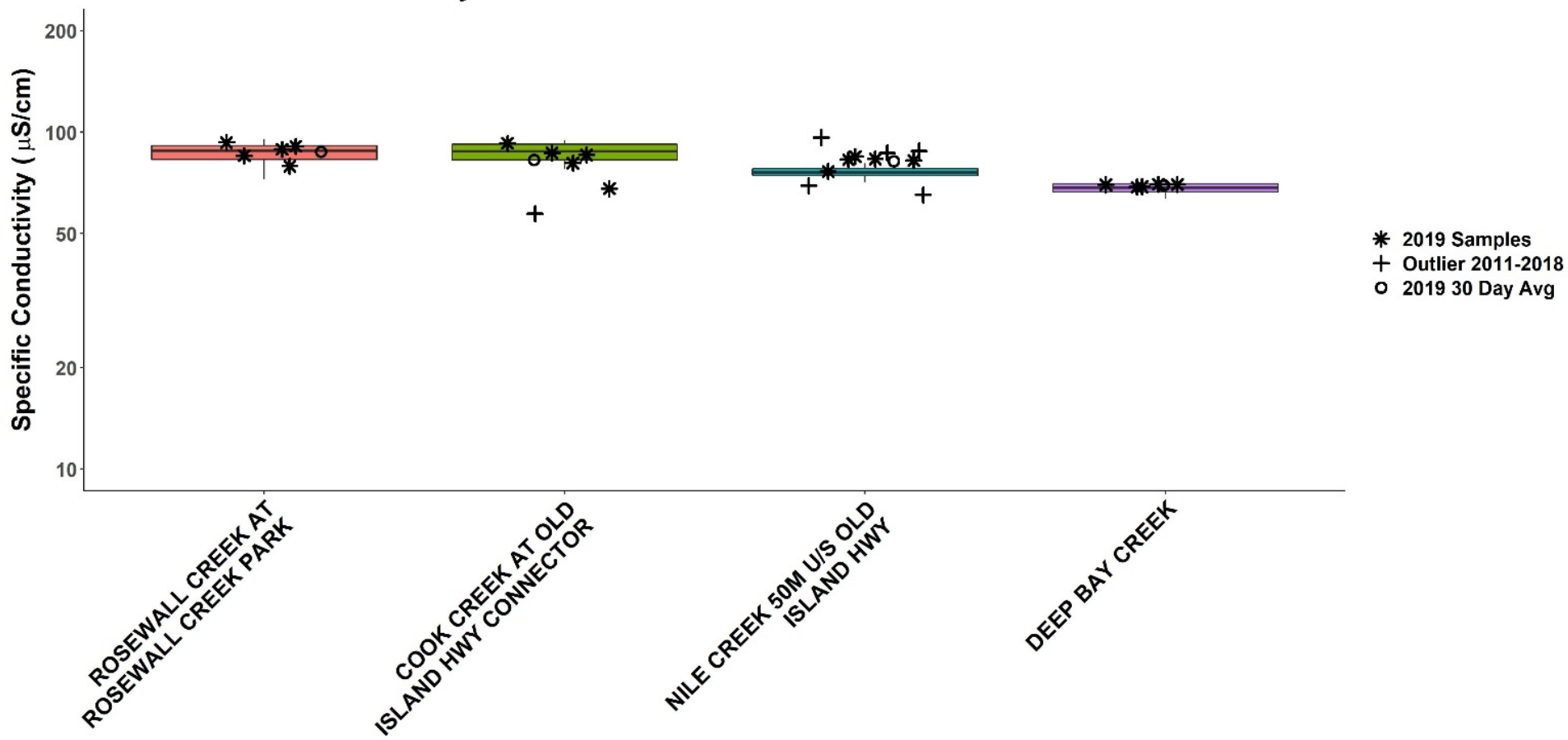




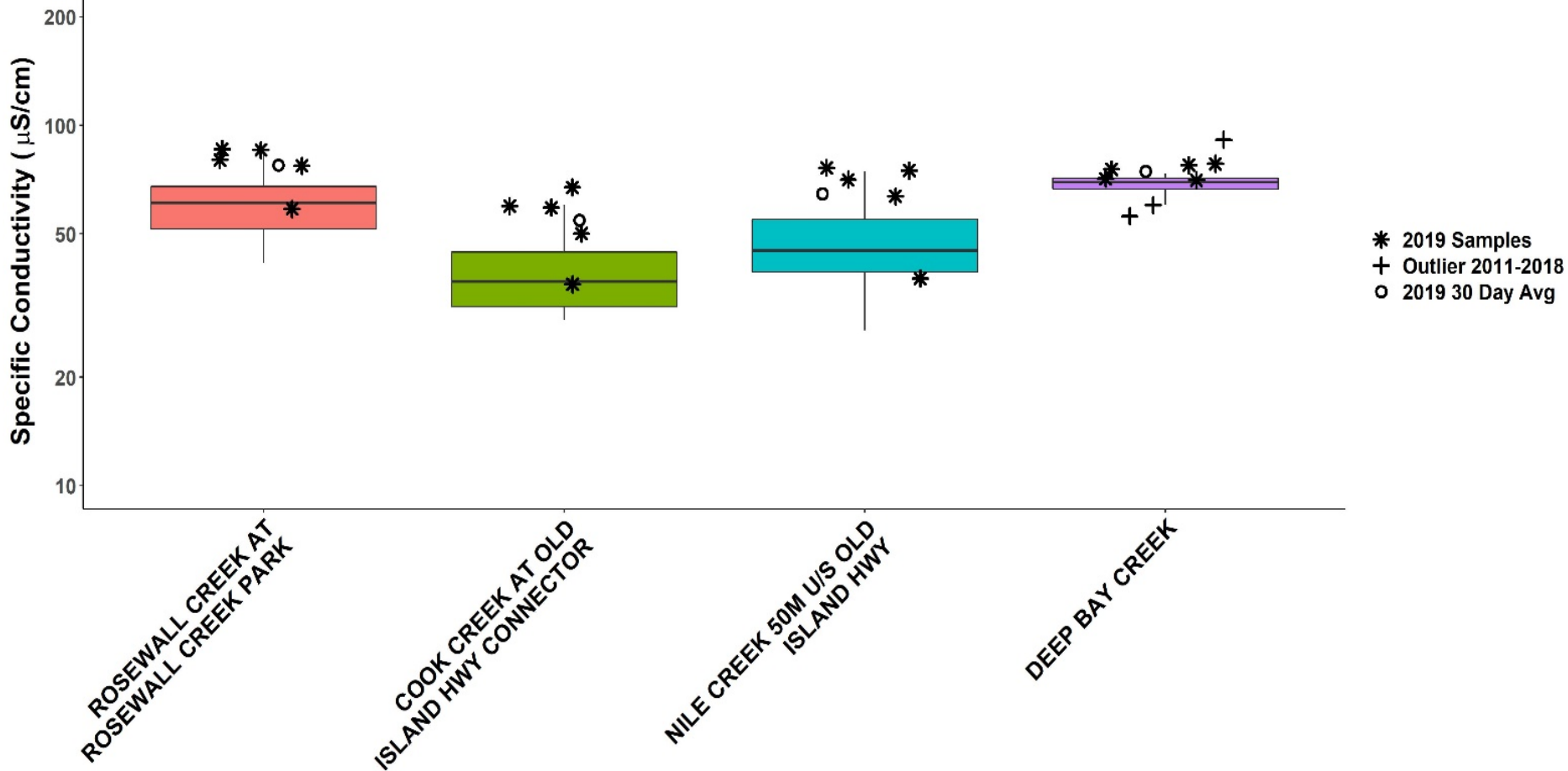
# WR1 Fall Turbidity

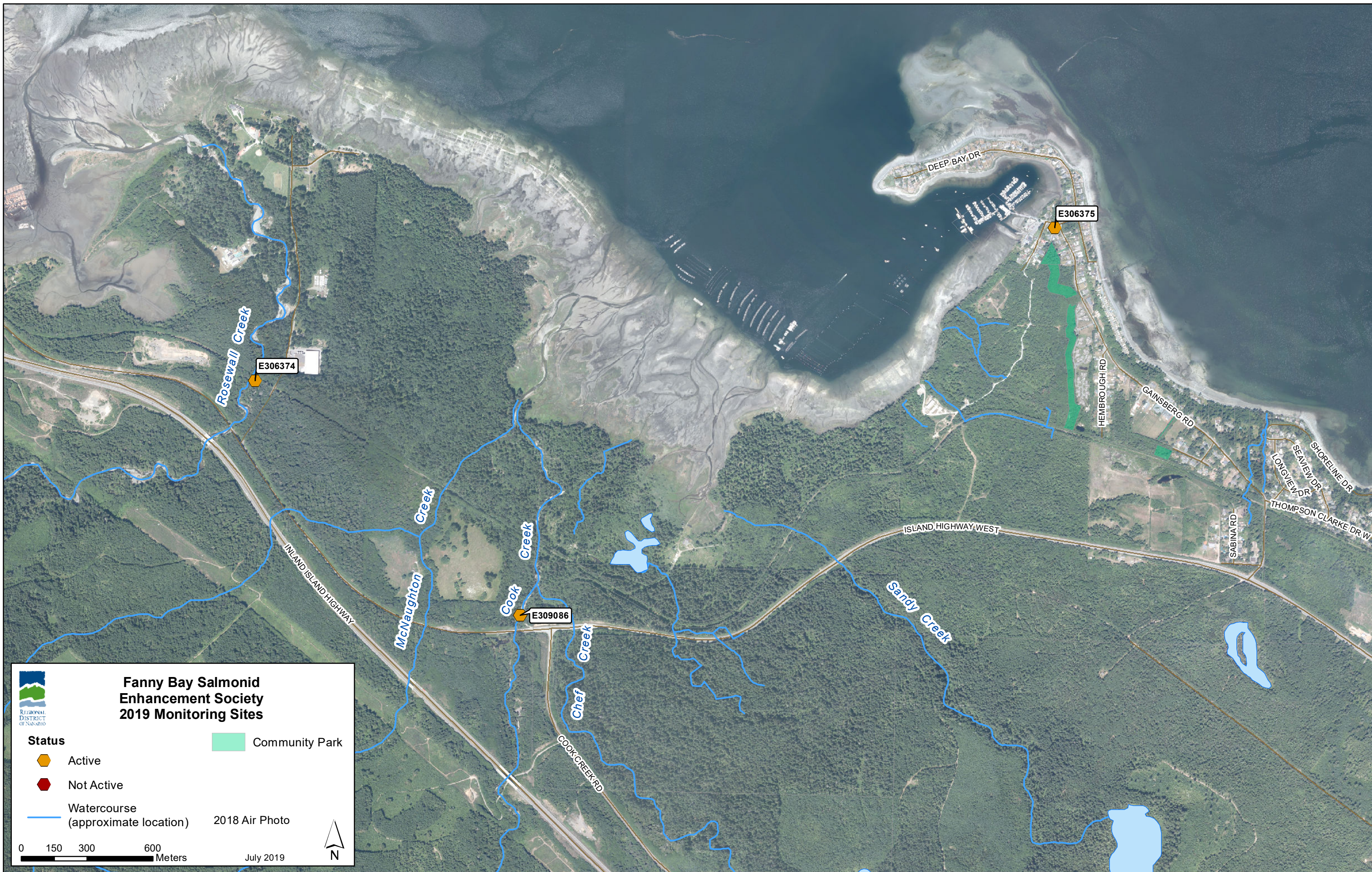


# WR1 Summer Conductivity



# WR1 Fall Conductivity





**Fanny Bay Salmonid Enhancement Society 2019 Monitoring Sites**

REGIONAL DISTRICT OF NANAIMO

**Status**

- ⬠ Active
- ⬠ Not Active

Watercourse (approximate location)

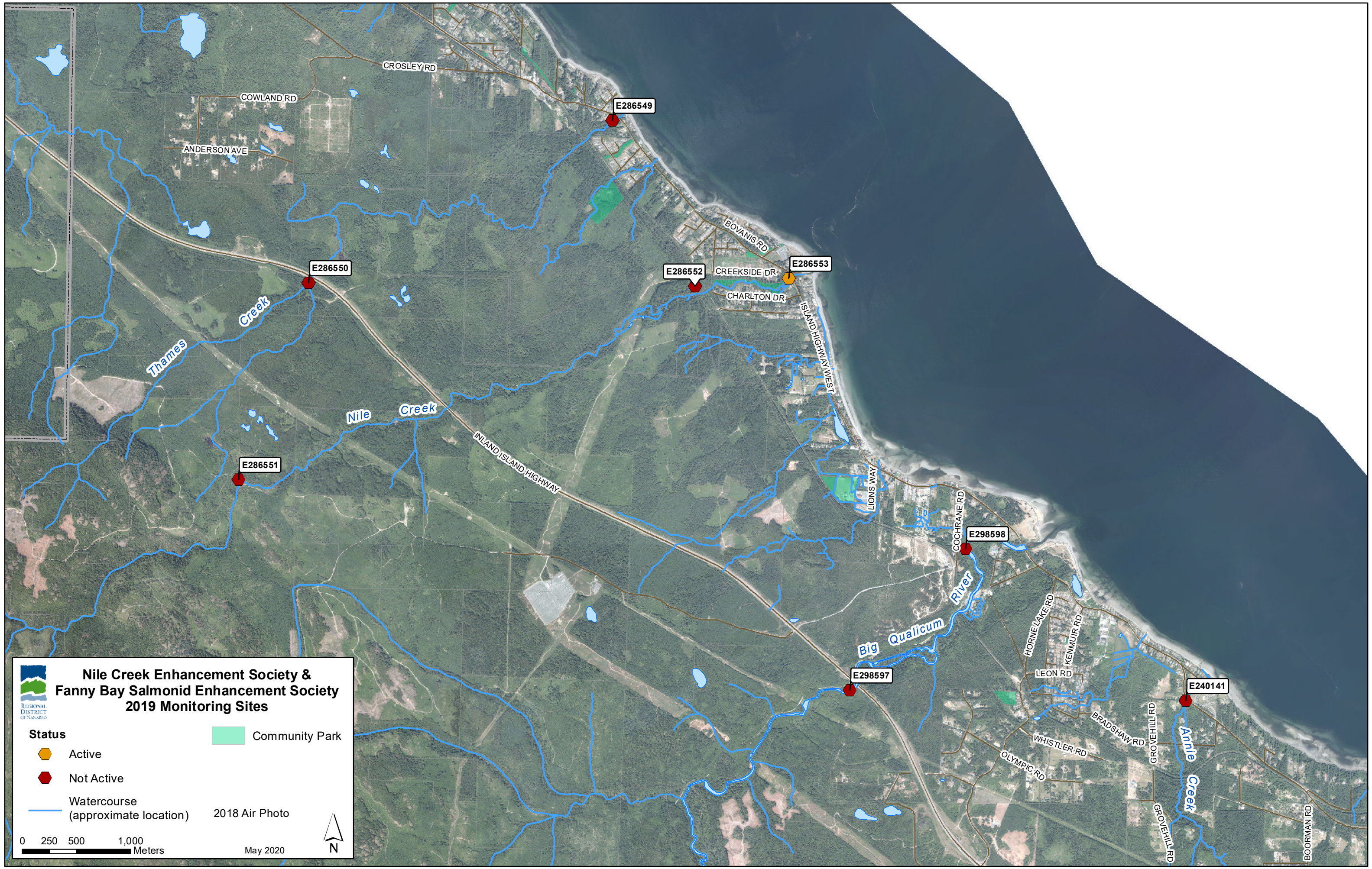
Community Park

2018 Air Photo

0 150 300 600 Meters

July 2019

N



**Nile Creek Enhancement Society & Fanny Bay Salmonid Enhancement Society 2019 Monitoring Sites**

REGIONAL DISTRICT OF NANAIMO

**Status**

- Active (Yellow Diamond)
- Not Active (Red Diamond)

Watercourse (approximate location) (Blue Line)

Community Park (Green Area)

2018 Air Photo

0 250 500 1,000 Meters

May 2020

N