

May 5, 2022

Regional District of Nanaimo Community Wildfire Resiliency Plans

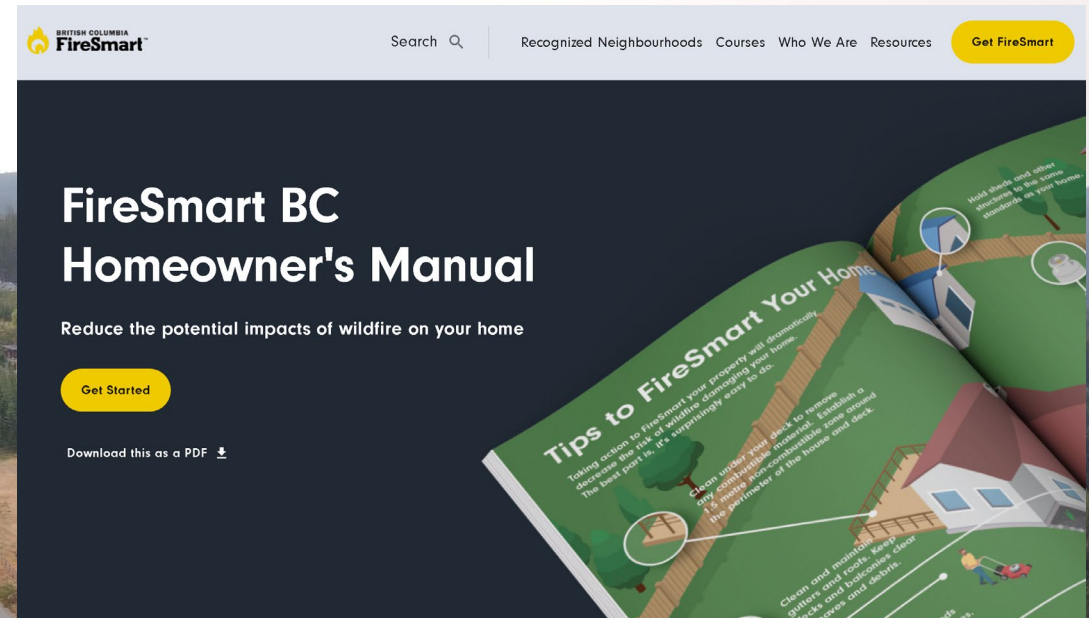
Presentation to RDN Electoral Areas Services Committee

Matt Shields, Forester
Diamond Head Consulting Ltd.

Image: Meadowood, Electoral Area F

7 Disciplines of FireSmart

- Education
- Community Planning
- Development Considerations
- Interagency Co-operation
- FireSmart and Cross Training
- Emergency Planning
- Fuel Management



BRITISH COLUMBIA
FireSmart

Search | [Recognized Neighbourhoods](#) [Courses](#) [Who We Are](#) [Resources](#) [Get FireSmart](#)

FireSmart BC Homeowner's Manual

Reduce the potential impacts of wildfire on your home

[Get Started](#)

[Download this as a PDF](#)

Tips to FireSmart Your Home

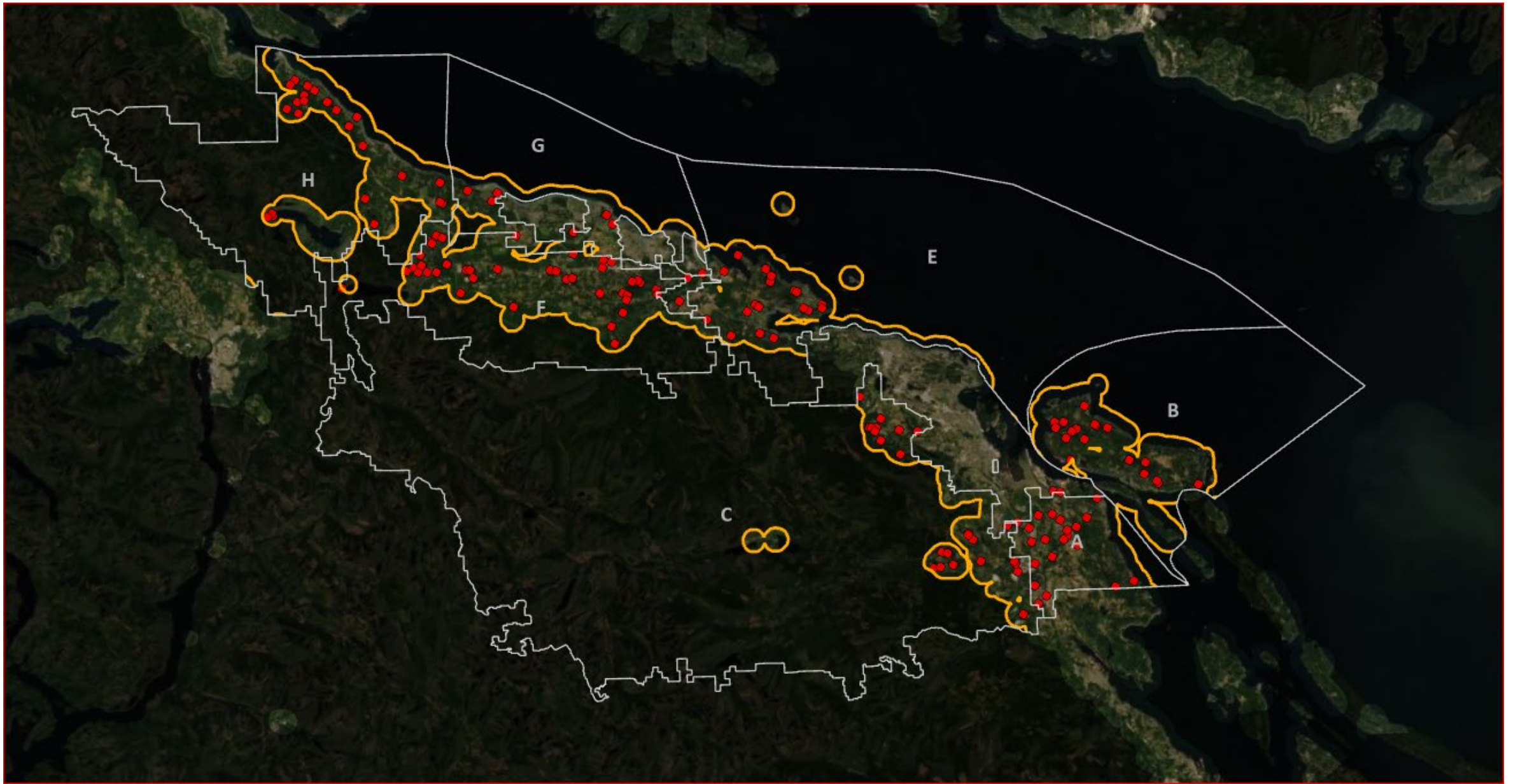
Taking action to FireSmart your property will dramatically decrease the risk of wildfire damaging your home. The best part is, it's surprisingly easy to do.

Clean under your deck to remove any combustible material. Establish a 1 metre fire-free zone around the perimeter of the house and deck.

Clean and maintain. Keep gutters and roofs clear of leaves and debris.

Hold doors and other windows to be some distance on your home.

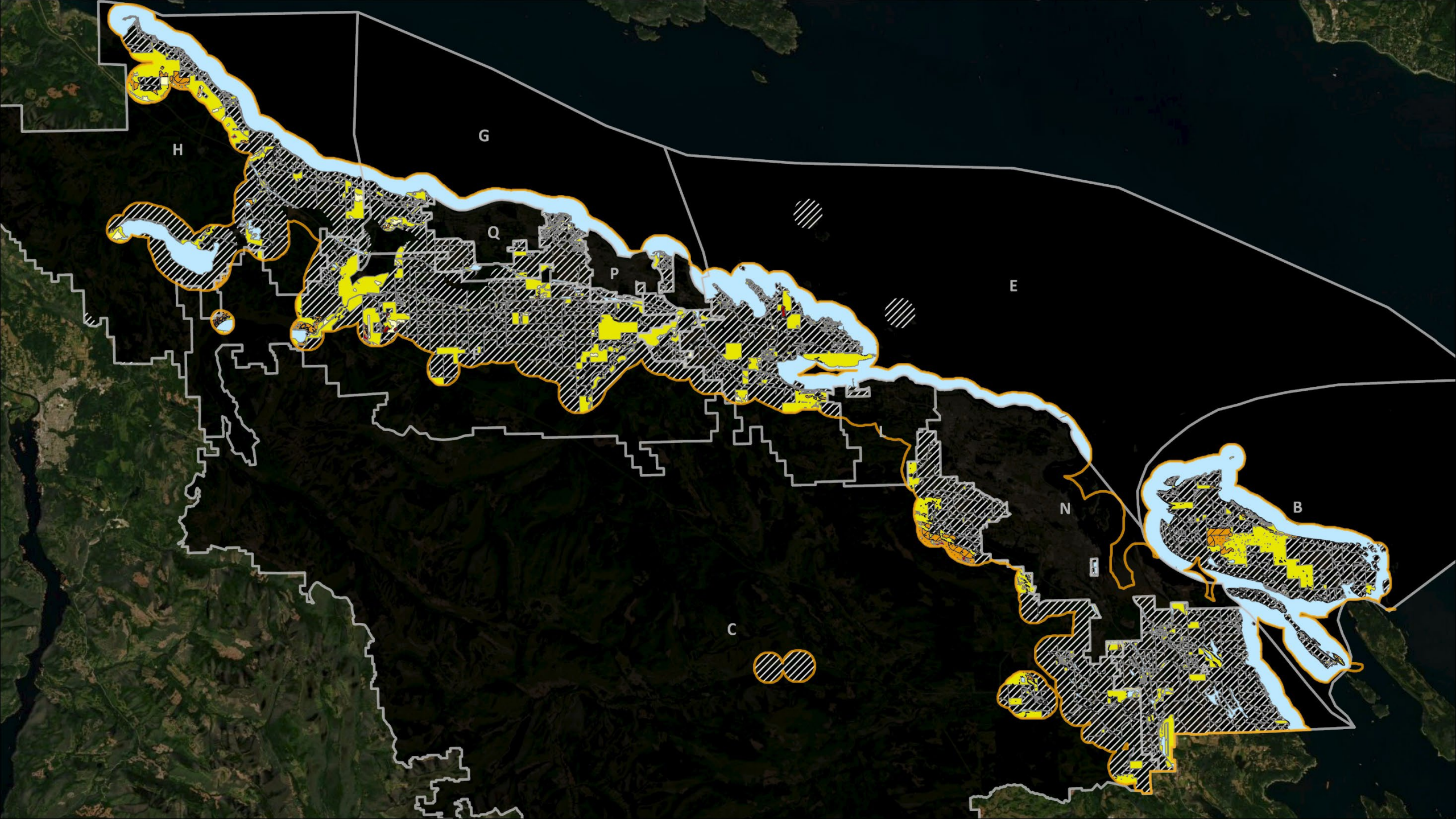
*The CWRP is a tool for building a FireSmart community
(East Wellington, Electoral Area C)*



WILDFIRE RISK

RADIANT HEAT VS. EMBER IGNITION





Three Key Findings

1. Moderate Risk is typical throughout the RDN

Moderate risk means people live in communities where wildfire can occur during a typical year, even though fires of the highest severity may be unlikely. High risk is present in some locations.

2. Private land severely fragments the forest landscape, making it difficult to gain a complete picture of the risk environment.

The types of forests found in the region are likely to support moderate – high wildfire behavior.

3. Areas of higher risk are associated with steep slopes or denser conifer fuel types.

Terrain and access issues reduce the feasibility of comprehensive fuel management.

(Extension, Electoral Area C)

An aerial photograph of a large, multi-story house with a grey roof and a light-colored driveway, situated in a dense forest of tall evergreen trees. A blue trampoline is visible on a grassy area in the foreground. The house is surrounded by a well-maintained lawn and a paved driveway. The forest extends to the edges of the property, with a few other houses visible in the distance.

7 Disciplines of FireSmart

- Education
- Community Planning
- Development Considerations
- Interagency Co-operation
- FireSmart and Cross Training
- Emergency Planning
- Fuel Management

*The CWRP is a tool for building a FireSmart community
(Bowser, Electoral Area H)*

Action Plan Highlights

An aerial photograph of a large, multi-story house with a grey roof and a light-colored exterior, situated in a clearing surrounded by a dense forest of tall, thin evergreen trees. The house has a large porch and a swimming pool in the yard. The forest extends to the edges of the frame, with a few other buildings visible in the distance.

Education: *Hire a FireSmart Coordinator to implement the RDN's wildfire resiliency initiatives.*

Community Planning: *Establish a policy to assess wildfire threat levels on RDN property and leased lands, particularly during the acquisition process.*



Action Plan Highlights

Development Considerations: Investigate using Development Approval Information area provisions in the OCPs to request wildfire hazard assessments during land development.

Interagency Cooperation: Maintain seasonal and timely communications with the BC Wildfire Service, local fire departments, and other emergency response agencies to discuss relevant RDN initiatives in wildfire management.

(Cedar, Electoral Area A)

Action Plan Highlights

FireSmart Training and Cross-Training: As staff are added to Emergency Services, enrol members in fundable ICS-100 and LFR courses.

Emergency Planning: Establish seasonal “preparedness levels” based on the provincial fire danger rating to allocate resources within Emergency Services during periods of high fire risk.

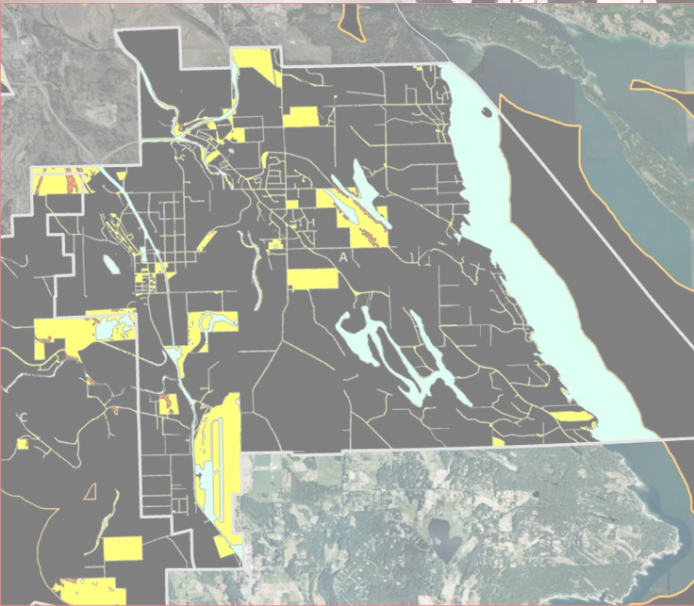
(Beachcomber, Electoral Area E)

Action Plan Highlights

Fuel Management: *Pursue FireSmart landscaping demonstration projects as part of public outreach and education. Each plan identifies at least 1 area where large-scale fuel management could have potential.*

(Little Mountain, Electoral Area F)

Questions



Matt Shields, Forester
Diamond Head Consulting Ltd.
mattshields@diamondheadconsulting.com